

PENNSY TURNPIKE LEVELS BARRIERS OF ALLEGHENIES

Higher Ridges Pierced by 7 Lighted Tunnels.

BY CHARLES M. NOBLE

(Special highway engineer, Pennsylvania turnpike commission.) The Pennsylvania turnpike is man's latest achievement in overcoming the forces of nature.

Unlike the existing highway systems of the United States where design standards fluctuate every few miles, depending upon the date of construction, the turnpike has been designed and is being constructed as a single design problem.

Will Have No Grade Crossings.

The turnpike is the longest grade separated highway in the United States. At no point along the entire 160 miles will a road or railway of any kind cross at grade level or will any frontage or access be permitted along and within the 200 foot right of way, except at specific points which have been designated as interchanges.

Entrances at 10 Points.

Access to the turnpike is being provided at the terminals (Irwin on the Pittsburgh end, Middlesex on the Harrisburg end) and at eight intermediate points varying in distance from 8 miles to 35 miles apart.

The Pennsylvania turnpike was financed by the purchase of Turnpike commission 3 1/2 per cent serial bonds by the Reconstruction Finance corporation in the amount of \$35,000,000 and an outright grant of \$28,100,000 from PWA.

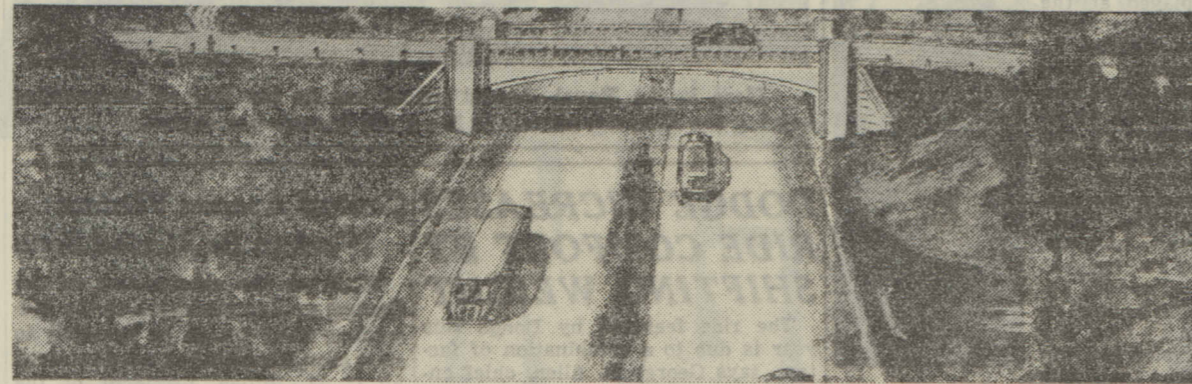
New Ventilator Filter Unit Keeps Dust Out of Pontiac

Evidence of grit-loaded dust entering the engines of parked cars led Pontiac engineers to insert a copper ribbon filter unit in the ventilator outlet pipe.

Longest Super in U. S.—160 Miles



On this relief map of Pennsylvania is shown the location of a \$60,000,000 toll road to be opened to traffic about July 1.



This artist's drawing shows the general design of the superturnpike, two one-way pavements separated by a 10 foot parkway.

TIRE CHANGING MADE EASY BY NEW TYPE JACK

At last an easier way to change a tire has been developed. It is accomplished through a wheel lifting jack of new design which is used as standard equipment in the tool kit of all 1940 Buicks.

Two units comprise the new tool. One is a lifting jack and the other



a stand for supporting the end of the axle when it is at the desired level above ground.

With the wheel lifted above the ground, the stand is placed, by means of a folding handle, under the flange of the brake backing plate.

Oil Filters Are Standard in 1940 Buick Engines

Oil filters are a part of the equipment of all 1940 Buick engines. The filter element has 8,000 to 10,000 mile capacity and is provided with a drain plug at the bottom.

New Buick Starting Switch Averts Clashing of Gears

The 1940 Buicks have a simplified vacuum controlled starting motor switch. By means of its new design, starter gears cannot be clashed even if the owner inadvertently should operate the switch when the motor is running.

RAIL ELEVATION PLAN PUSHED BY NORTHWEST SIDE

Civic leaders on the northwest side report that plans to elevate the Northwestern railroad tracks between Foster to Ozark avenues will be announced soon.

CADILLAC OFFERS 31 BODY TYPES IN FIVE SERIES

La Salle Styling Taken from 60 Special.

Cadillac is entering its 38th year with the most comprehensive line of automobiles in its history, according to D. E. Ahrens, general sales manager of the Cadillac-La Salle division of General Motors.

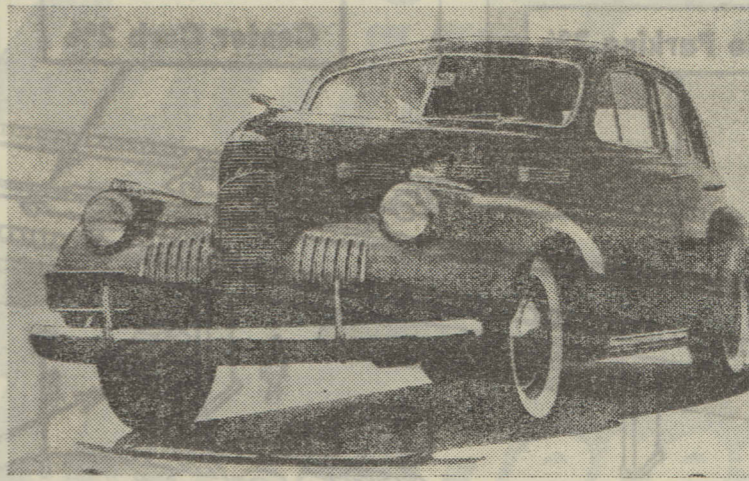
All the five new Cadillac series bear a marked family resemblance and their bodies show the influence of the Cadillac Sixty Special which was brought out late last year.

Entirely new this year is the series Seventytwo, which is mounted on a 133 inch wheelbase. The Sixty-two is three inches longer in wheelbase than the Sixty-one, which it supercedes, and the designers have applied the greater length to increase comfort.

Greater economy in operation is assured on Cadillac-La Salle's eight cylinder cars by several refinements. Important to reduced costs is a special vacuum spark advance.

Front and rear spring suspension have been redesigned for the Sixty-two. Generators have been increased

La Salle Special Touring Sedan



New styling features the La Salle touring sedan which is on view at the automobile show.

Hood of Chevrolet

Here is the new alligator-jaw type hood of the 1940 Chevrolet. It opens wide on a spring counterbalance for easy access to the engine compartment.

The clutch is partly of a new design, more durable and easier to operate. Special spring steel, divided into segments, acts to cushion clutch disc engagement, with the result of a 20 to 25 per cent reduction in weight which facilitates gear shifting.

A Winter Tip: Never Refill Radiator While Overheated. If your engine becomes overheated and a loss of water or antifreeze results, never refill the radiator until the motor cools to normal operating temperatures.

Sodium Lights to Be Placed at Cicero Ave. and 67th St.

Sodium vapor lights are to be installed at 67th street and Cicero avenue, according to Ald. Michael P. Hogan (13th).

Higher Rate than Last Year. One hundred and eighty-eight aged persons were killed in 1937, an average of 15 per month; 148 during 1938, an average of 13 per month, and 128 in nine months of 1939, an average of 14 per month.

The only apparent solution to this problem is for the elderly pedestrian to recognize his physical limitations and handicaps and govern himself accordingly, and for the motorist to exercise greater respect, caution and courtesy toward the aged.

AGED PEDESTRIAN A BIG PROBLEM IN DRIVE FOR SAFETY

Education Cuts Toll in Ranks of Children.

BY CARL A. BARRETT (President, Illinois Automobile Club.) Student safety patrols, concentrated safety education and the vigilant efforts of organizations interested in reducing the appalling traffic accident toll, have succeeded in making Chicago a safer place for school children.

From 1922 to 1938 children between 5 and 14 years of age reduced their motor vehicle death rate 30 per cent. This was accomplished despite an increase of 104 per cent in the rate for all other ages.

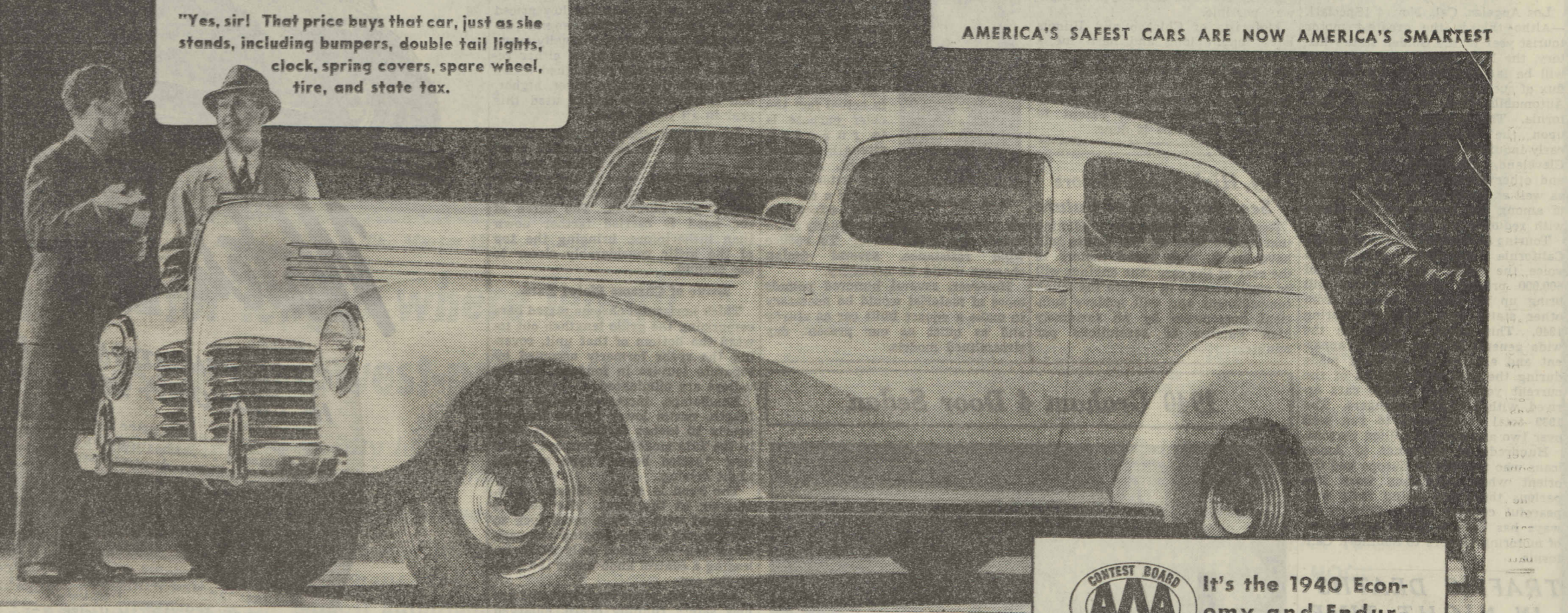
Accidents involving Chicago school children reached an all-time high in 1937—America's peak traffic accident year—when eight youngsters were killed each month.

Pedestrians a Problem. In sharp contrast to the rapid decline in child fatalities is the steady retrogression of the aged, especially the pedestrian. Persons over 55 years of age stand seven times more chance of being killed in a pedestrian traffic accident than do persons of all other age groups combined.

Improvement is lacking on Chicago's aged accident front. When one considers that less than 10 per cent of the city's population is over 65 years of age—school children greatly exceeding that figure—and that there are more than twice as many fatal accidents to persons over 65 years as to those between 1 and 14 years, we get some idea of the magnitude of the accident problem to aged persons.

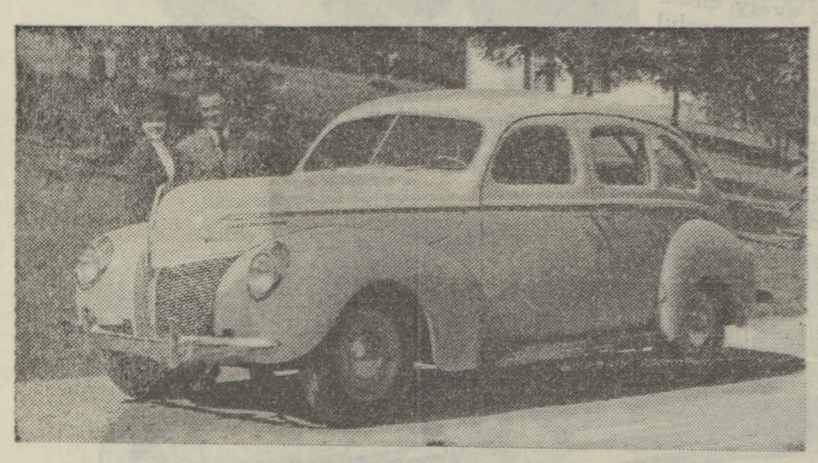
Higher Rate than Last Year. One hundred and eighty-eight aged persons were killed in 1937, an average of 15 per month; 148 during 1938, an average of 13 per month, and 128 in nine months of 1939, an average of 14 per month.

Advertisement for Hudson Six Sedan. Features: 'ON DISPLAY TODAY', 'This Big, Beautiful 92 Horsepower HUDSON SIX SEDAN', 'DELIVERS IN Chicago, READY FOR YOU TO DRIVE, FOR ONLY... \$789', 'AMERICA'S SAFEST CARS ARE NOW AMERICA'S SMARTEST'.



Advertisement for Hudson Six Sedan. Features: 'MOST AMAZING LOWEST PRICED SEDAN EVER BUILT', 'That price isn't an "L.O.B. price." It's a genuine delivered price. It buys the car you see here—a big, beautiful 92 horsepower Hudson Six Sedan—complete, ready to drive.', 'ON TOP OF ALL THIS, WE'LL GIVE YOU A SWELL DEAL ON YOUR OLD CAR. Low time payment terms, of course.'

Mercury 8 Town Sedan



Finger-tip gearshift is a Mercury feature.

Advertisement for Quaker State Motor Oil. Features: 'YOUR NEW HUDSON WILL RUN BETTER... LAST LONGER WITH QUAKER STATE MOTOR OIL'.

Advertisement for Butler Motors, Inc. Distributors. Features: 'SEE OUR EXHIBIT AT THE AUTOMOBILE SHOW, NOVEMBER 4 TO 12, INTERNATIONAL AMPHITHEATER, HALSTED AT 42ND STREET', 'BUTLER MOTORS, Inc. Distributors', '2500 S. Michigan', '2459 S. Indiana Ave.'.