

MSU Extension Publication Archive

Archive copy of publication, do not use for current recommendations. Up-to-date information about many topics can be obtained from your local Extension office.

Jiffy 1-8 Clothing made from a pillowcase
Michigan State University
Cooperative Extension Service
Bernetta Kahabka, Extension Specialist in Clothing
March 1970
24 pages

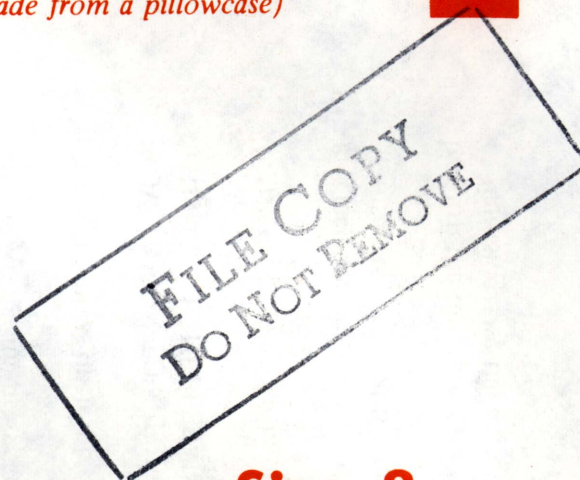
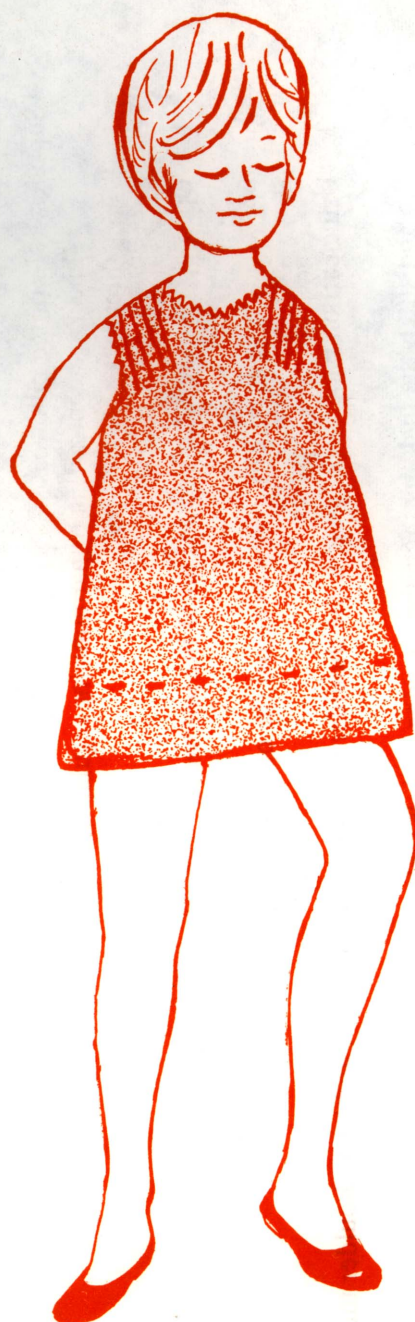
The PDF file was provided courtesy of the Michigan State University Library

Scroll down to view the publication.

JIFFY 1

Slipover

(made from a pillowcase)



Size 8

BY BERNETTA KAHABKA

Extension Specialist in Clothing

CENTER FRONT ON FOLD

about size 8

JIFFY SLIPOVER (made from a pillowcase)

Wear as a dress, jumper, or tunic topper with shorts or pants.

Supplies: 1 printed pillowcase
1 package contrasting or harmonizing regular width rick-rack
thread

1. Open up or trim off the seam end of the pillowcase. Keep wrong side out.
2. Place, pin, and cut out the pattern across the open end of the pillowcase.
3. Using carbon paper, *lightly* mark the shoulder seam lines and the front and back shoulder tucks.
4. Pin and stitch the tuck lines together, sewing back $\frac{1}{2}$ inch at the bottom ends of the tucks.
5. On the wrong side press the tucks flat toward the center front and center back.
6. Stitch and press open the shoulder seams.
7. NOW TRY ON TO SEE IF NECK AND ARMHOLES ARE LARGE ENOUGH. CAREFULLY TRIM OUT IF NECESSARY.
8. Finish off neck and armhole edges with rick-rack.
 - a. Place the rick-rack along the edges on the right side of the material and carefully stitch right thru the center of the rick-rack.
 - b. Turn the rick-rack over to the back. Stitch a second time along the edge of the material on the right side. Use the narrow side of the machine presser foot as a guide.

TO PILLOWCASE HEM



END SEAM

UNDERARM

CENTER BACK—PILLOWCASE SIDE SEAM

9. Move the pattern down on the pillowcase for a shorter JIFFY or let out the hem for more length.
10. The JIFFY can be ironed flat.
11. If you wish, make a pocket from the leftover neckline or armhole pieces. Finish it off with rick-rack. Sew it on and backtrack at each corner.

Regular, king, queen, and child's size pillowcases will determine final JIFFY size. If the circumference of a pillowcase is too large for around the bust or chest (especially from king or queen size pillowcases) sew a lengthwise underarm dart down from the underarm. Washing and pressing the pillowcase before sewing is suggested because some will shrink.

TO PILLOWCASE HEM



JIFFY 2

Slipover

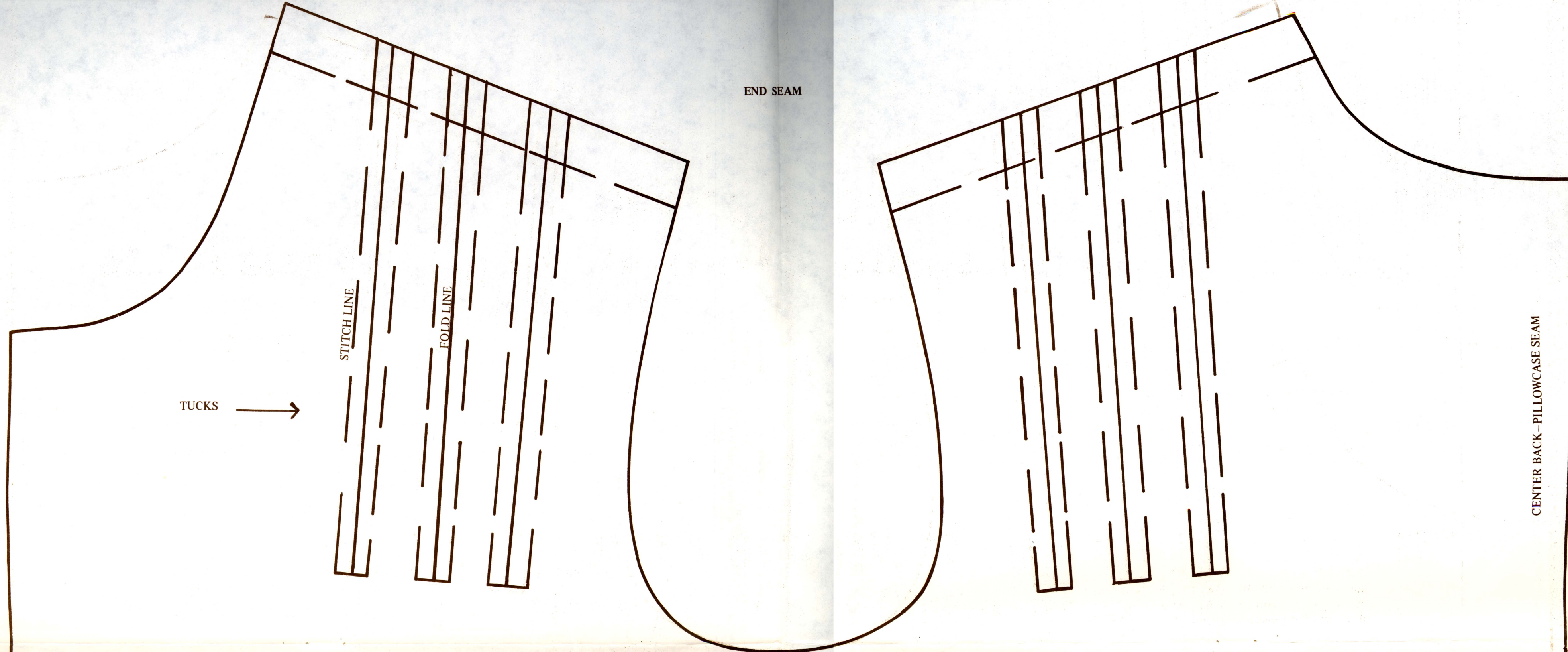
(made from a pillowcase)



Size 10

BY BERNETTA KAHABKA

Extension Specialist in Clothing



about size 10

JIFFY SLIPOVER

(made from a pillowcase)

Wear as a dress, jumper or tunic topper with shorts or pants.

Supplies: 1 printed pillowcase
1 package contrasting or harmonizing regular width rick-rack
thread

1. Open up or trim off the seam end of the pillowcase. Keep wrong side out.
2. Place, pin, and cut out the pattern across the open end of the pillowcase.
3. Using carbon paper, *lightly* mark the shoulder seam lines and the front and back shoulder tucks.
4. Pin and stitch the tuck lines together, sewing back ½ inch at the bottom ends of the tucks.
5. On the wrong side press the tucks flat toward the center front and center back.
6. Stitch and press open the shoulder seams.
7. NOW TRY ON TO SEE IF NECK AND ARMHOLES ARE LARGE ENOUGH. CAREFULLY TRIM OUT IF NECESSARY.
8. Finish off neck and armhole edges with rick-rack.
 - a. Place the rick-rack along the edges on the right side of the material and carefully stitch right thru the center of the rick-rack.

- b. Turn the rick-rack over to the back. Stitch a second time along the edge of the material on the right side. Use the narrow side of the machine presser foot as a guide.
9. Move the pattern down on the pillowcase for a shorter JIFFY or let out the hem for more length.
 10. The JIFFY can be ironed flat.
 11. If you wish, make a pocket from the leftover neckline or armhole pieces. Finish it off with rick-rack. Sew it on and backtrack at each corner.

Regular, king, queen, and child's size pillowcases will determine final JIFFY size. If the circumference of a pillowcase is too large for around the bust or chest (especially from king or queen size pillowcases) sew a lengthwise underarm dart down from the underarm. Washing and pressing the pillowcase before sewing is suggested because some will shrink.

TO PILLOWCASE HEM

TO PILLOWCASE HEM

JIFFY 3

Slipover

(made from a pillowcase)



Size 12

BY BERNETTA KAHABKA

Extension Specialist in Clothing

END SEAM

STITCH LINE

FOLD LINE

TUCKS

UNDERARM

CENTER BACK PILLOWCASE SEAM

about size 12

JIFFY SLIPOVER

(made from a pillowcase)

Wear as a dress, jumper or tunic topper with shorts or pants.

Supplies: 1 printed pillowcase
1 package contrasting or harmonizing regular width rick-rack
thread

1. Open up or trim off the seam end of the pillowcase. Keep wrong side out.
2. Place, pin, and cut out the pattern across the open end of the pillowcase.
3. Using carbon paper, *lightly* mark the shoulder seam lines and the front and back shoulder tucks.
4. Pin and stitch the tuck lines together, sewing back $\frac{1}{2}$ inch at the bottom ends of the tucks.
5. On the wrong side press the tucks flat toward the center front and center back.
6. Stitch and press open the shoulder seams.
7. NOW TRY ON TO SEE IF NECK AND ARMHOLES ARE LARGE ENOUGH. CAREFULLY TRIM OUT IF NECESSARY.
8. Finish off neck and armhole edges with rick-rack.
 - a. Place the rick-rack along the edges on the right side of the material and carefully stitch right thru the center of the rick-rack.

- b. Turn the rick-rack over to the back. Stitch a second time along the edge of the material on the right side. Use the narrow side of the machine presser foot as a guide.
9. Move the pattern down on the pillowcase for a shorter JIFFY or let out the hem for more length.
 10. The JIFFY can be ironed flat.
 11. If you wish, make a pocket from the leftover neckline or armhole pieces. Finish it off with rick-rack. Sew it on and backtrack at each corner.

Regular, king, queen, and child's size pillowcases will determine final JIFFY size. If the circumference of a pillowcase is too large for around the bust or chest (especially from king or queen size pillowcases) sew a lengthwise underarm dart down from the underarm. Washing and pressing the pillowcase before sewing is suggested because some will shrink.

CENTER FRONT ON FOLD

TO PILLOWCASE HEM

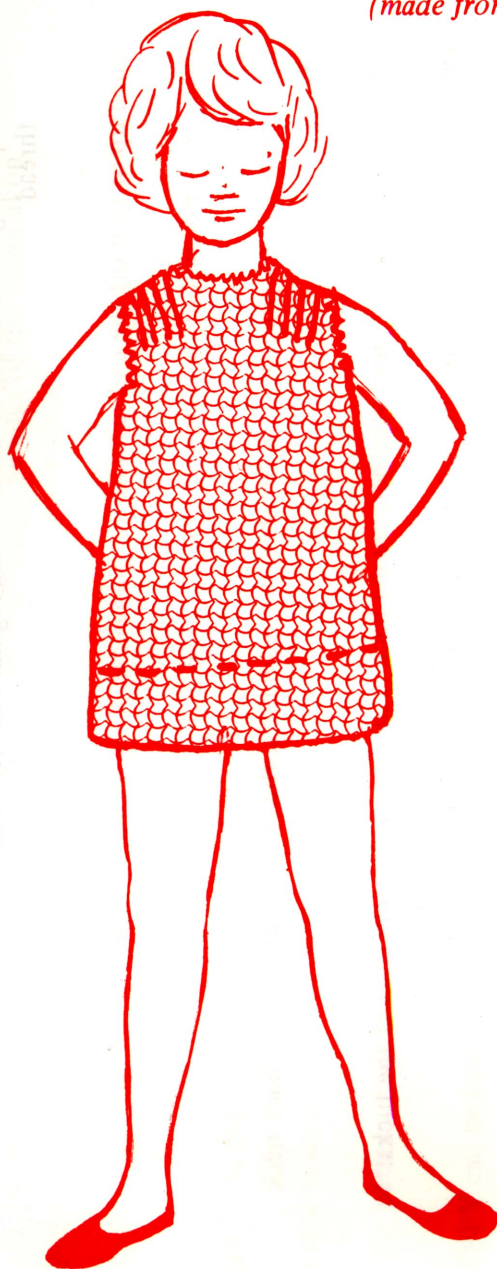
TO PILLOWCASE HEM

CENTER BACK PAGE

JIFFY 4

(Back neck opening)

(made from a pillowcase)



Size 8

BY BERNETTA KAHABKA

Extension Specialist in Clothing

END SEAM

TUCKS

STITCH LINE

FOLD LINE

UNDERARM

5 INCHES

BACK NECK OVERLAP

OPEN ALONG SEAM

ABOUT
SIZE 8

JIFFY WITH BACK NECK OPENING

(made from a pillowcase)

Wear as a dress, jumper, or tunic topper with shorts or pants.

Supplies: 1 printed pillowcase
1 package contrasting or harmonizing regular size rick-rack thread

1. Open up or trim off the end seam of the pillowcase. Keep wrong side out.
2. Place, pin, and cut out the pattern across the open end of the pillowcase.
3. Using carbon paper, *lightly* mark the shoulder seam lines, the front tucks, and the back neck overlap.
4. Pin and stitch the tuck lines together, sewing back $\frac{1}{2}$ inch at the bottom ends of the tucks.
5. On the wrong side press the tucks flat toward the center front.
6. Stitch and press open the shoulder seams.
7. NOW TRY ON TO SEE IF THE NECK AND ARM HOLES ARE LARGE ENOUGH. CAREFULLY TRIM OUT IF NECESSARY.
8. Finish off neckline and armhole edges with rick-rack.
 - a. Place the rick-rack along the edges on the right side of the material and carefully stitch right thru the center of the rick-rack.

- b. Turn the rick-rack over to the back. Stitch a second time along the edge of the material on the right side. Use the narrow side of the machine presser foot as a guide.
9. Turn under raw edges of back neck opening and edge stitch.
 10. Fit on the person and fold the excess material into a small pleat and stitch in place. BE SURE TO ALLOW FOR SHOULDER MOVEMENT.
 11. Sew a snap fastener at the back of the neck.
 12. Move the pattern down on the pillowcase for a shorter JIFFY or let out the hem for more length.
 13. The JIFFY can be ironed flat.

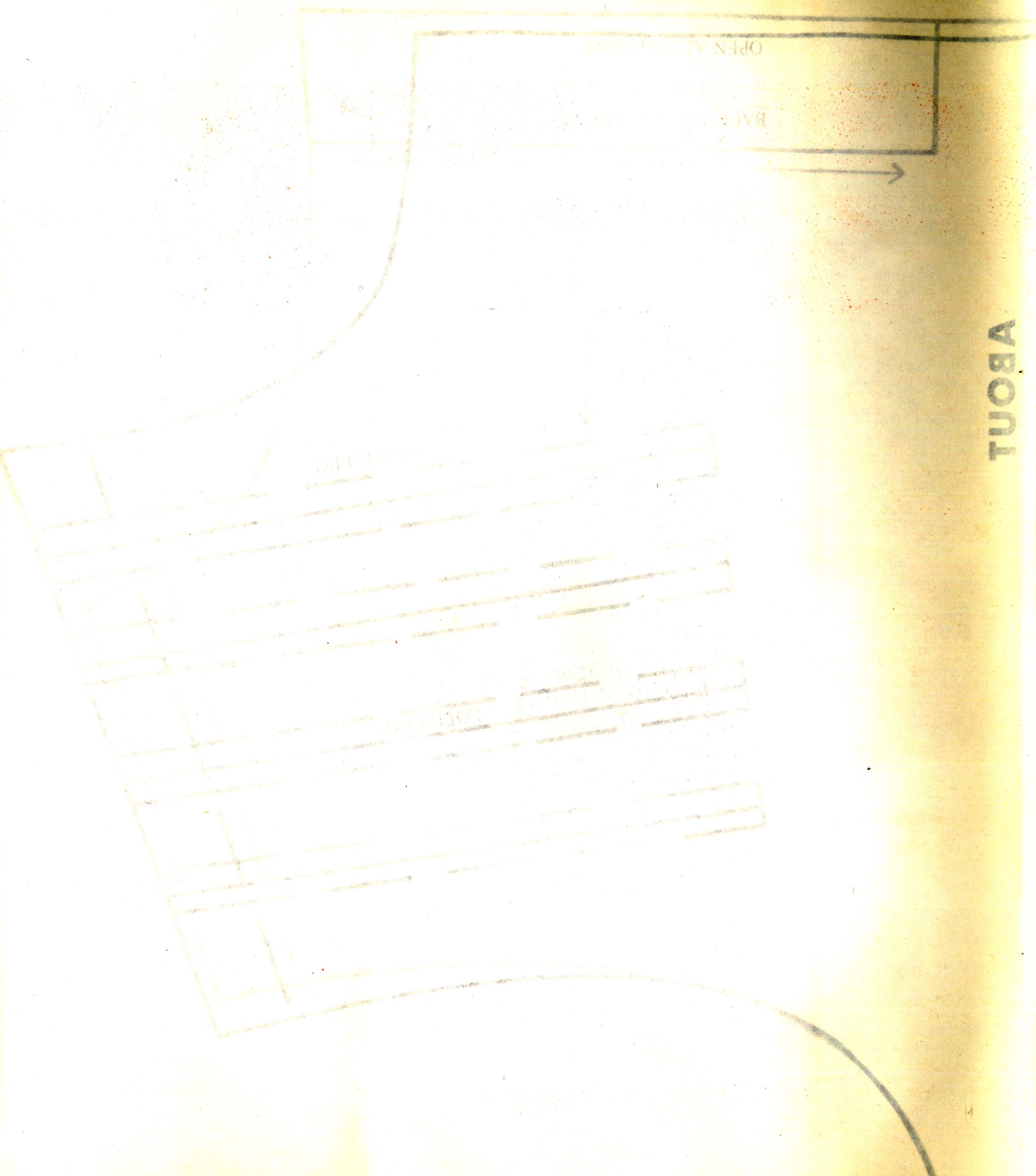
Regular, king, queen, and child's size pillowcases will determine final JIFFY size. If the circumference of a pillowcase is too large for around the bust or chest (especially from king or queen size pillowcases) sew a lengthwise underarm dart down from the underarm. Washing and pressing the pillowcase before sewing is suggested because some will shrink.

CENTER FRONT ON FOLD

TO PILLOWCASE HEM

CENTER BACK—PILLOWCASE SIDE SEAM

TO PILLOWCASE HEM



JIFFY 5

(Back neck opening)

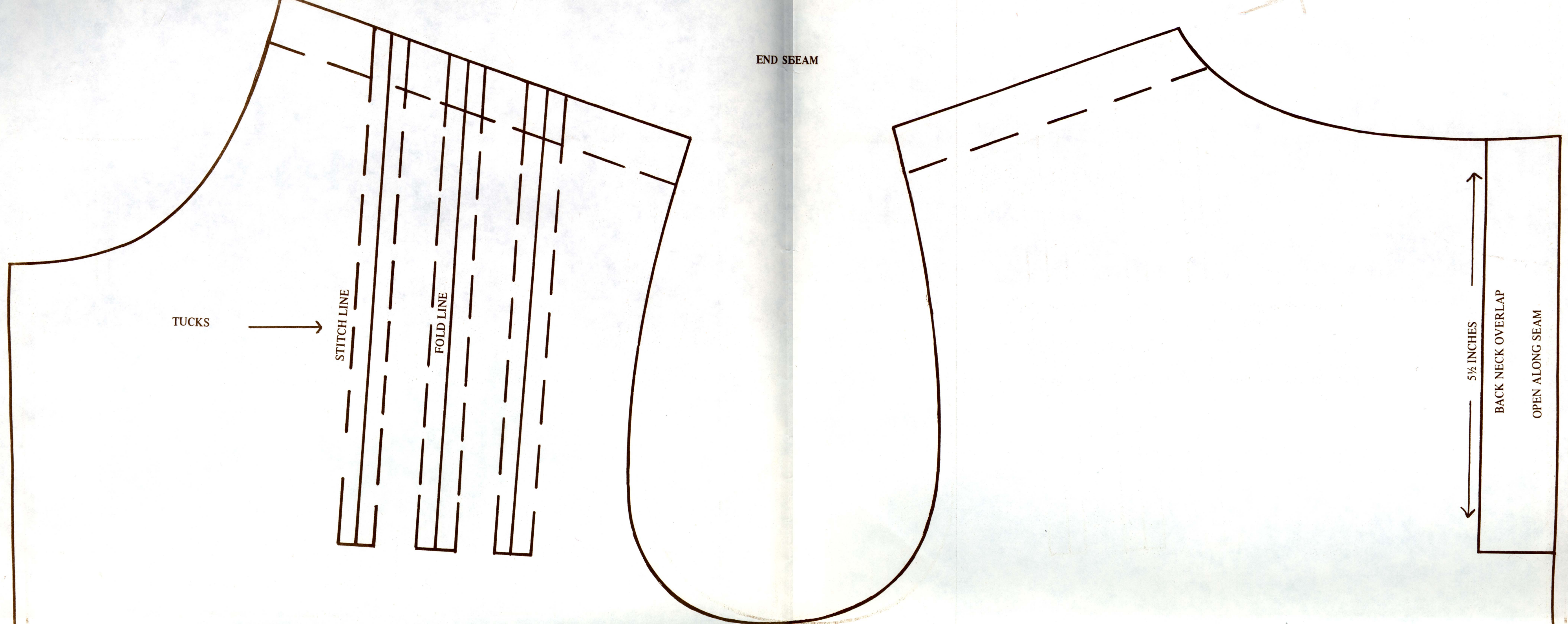
(made from a pillowcase)



Size 10

BY BERNETTA KAHABKA

Extension Specialist in Clothing



**ABOUT
SIZE 10**

JIFFY WITH BACK NECK OPENING **(made from a pillowcase)**

Wear as a dress, jumper, or tunic topper with shorts or pants.

Supplies: 1 printed pillowcase
1 package contrasting or harmonizing regular size rick-rack
thread

1. Open up or trim off the end seam of the pillowcase. Keep wrong side out.
2. Place, pin, and cut out the pattern across the open end of the pillowcase.
3. Using carbon paper, *lightly* mark the shoulder seam lines, the front tucks, and the back neck overlap.
4. Pin and stitch the tuck lines together, sewing back ½ inch at the bottom ends of the tucks.
5. On the wrong side press the tucks flat toward the center front.
6. Stitch and press open the shoulder seams.
7. **NOW TRY ON TO SEE IF THE NECK AND ARM HOLES ARE LARGE ENOUGH. CAREFULLY TRIM OUT IF NECESSARY.**
8. Finish off neckline and armhole edges with rick-rack.
 - a. Place the rick-rack along the edges on the right side of the material and carefully stitch right thru the center of the rick-rack.

- b. Turn the rick-rack over to the back. Stitch a second time along the edge of the material on the right side. Use the narrow side of the machine presser foot as a guide.
9. Turn under raw edges of back neck opening and edge stitch.
10. Fit on the person and fold the excess material into a small pleat and stitch in place. **BE SURE TO ALLOW FOR SHOULDER MOVEMENT.**
11. Sew a snap fastener at the back of the neck.
12. Move the pattern down on the pillowcase for a shorter JIFFY or let out the hem for more length.
13. The JIFFY can be ironed flat.

Regular, king, queen, and child's size pillowcases will determine final JIFFY size. If the circumference of a pillowcase is too large for around the bust or chest (especially from king or queen size pillowcases) sew a lengthwise underarm dart down from the underarm. Washing and pressing the pillowcase before sewing is suggested because some will shrink.

TO PILLOWCASE HEM

TO PILLOWCASE HEM

CENTER FRONT ON FOLD

CENTER BACK—PILLOWCASE SIDE SEAM

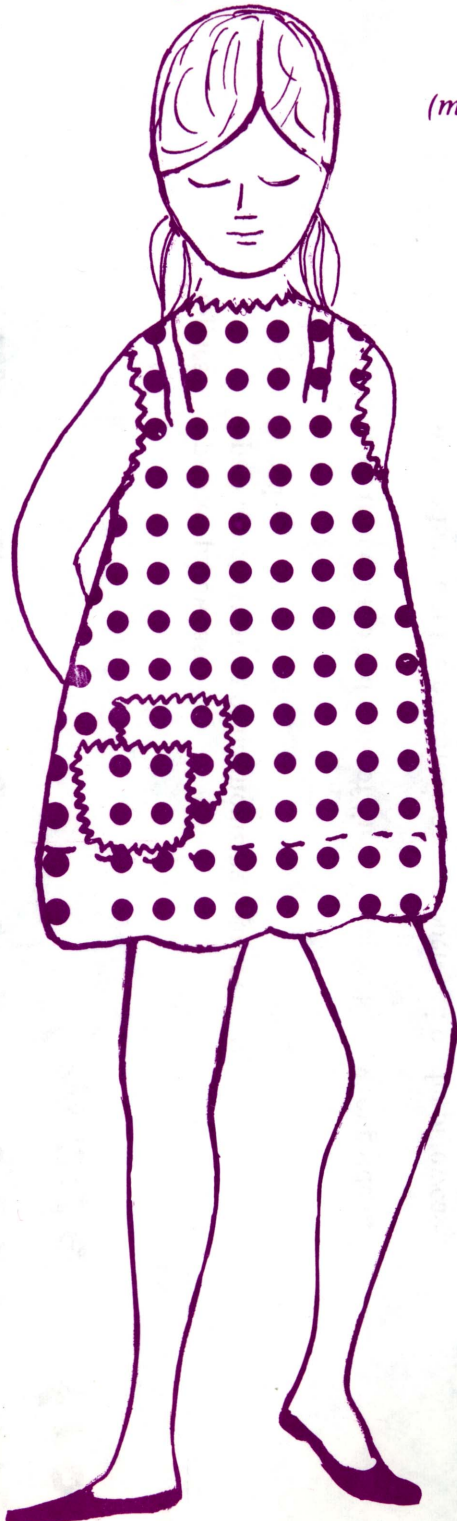
JIFFY

(Back neck opening)

6

(made from a pillowcase)

Size 12



BY BERNETTA KAHABKA

Extension Specialist in Clothing

COOPERATIVE EXTENSION SERVICE

MICHIGAN STATE UNIVERSITY

END SEAM

TUCKS

STITCH LINE

FOLD LINE

UNDERARM

6 INCHES

BACK NECK OVERLAP
OPEN ALONG SEAM

ABOUT

SIZE 12

JIFFY WITH BACK NECK OPENING (made from a pillowcase)

Wear as a dress, jumper or tunic topper with shorts or pants.

Supplies: 1 printed pillowcase
1 package contrasting or harmonizing regular size rick-rack thread

1. Open up or trim off the end seam of the pillowcase. Keep wrong side out.
2. Place, pin, and cut out the pattern across the open end of the pillowcase.
3. Using carbon paper, *lightly* mark the shoulder seam lines, the front tucks, and the back neck overlap.
4. Pin and stitch the tuck lines together, sewing back $\frac{1}{2}$ inch at the bottom ends of the tucks.
5. On the wrong side press the tucks flat toward the center front.
6. Stitch and press open the shoulder seams.
7. NOW TRY ON TO SEE IF THE NECK AND ARM HOLES ARE LARGE ENOUGH. CAREFULLY TRIM OUT IF NECESSARY.
8. Finish off neckline and armhole edges with rick-rack.
 - a. Place the rick-rack along the edges on the right side of the material and carefully stitch right thru the center of the rick-rack.

b. Turn the rick-rack over to the back. Stitch a second time along the edge of the material on the right side. Use the narrow side of the machine presser foot as a guide.

9. Turn under raw edges of back neck opening and edge stitch.
10. Fit on the person and fold the excess material into a small pleat and stitch in place. BE SURE TO ALLOW FOR SHOULDER MOVEMENT.
11. Sew a snap fastener at the back of the neck.
12. Move the pattern down on the pillowcase for a shorter JIFFY or let out the hem for more length.
13. The JIFFY can be ironed flat.

Regular, king, queen, and child's size pillowcases will determine final JIFFY size. If the circumference of a pillowcase is too large for around the bust or chest (especially from king or queen size pillowcases) sew a lengthwise underarm dart down from the underarm. Washing and pressing the pillowcase before sewing is suggested because some will shrink.

TO PILLOWCASE HEM

TO PILLOWCASE HEM

CENTER FRONT ON FOLD

CENTER BACK - PILLOWCASE SIDE SEAM

JIFFY

BOATNECK

7

(made from a pillowcase)



About Size 12

BY BERNETTA KAHABKA

Extension Specialist in Clothing

END SEAM

OPEN OR TRIM OFF SEAM END – IF SELVAGE, USE AS IS, OR TURN RAW EDGES UNDER AND EDGE STITCH

STITCH IN WITH SHOULDER SEAMS

NECK FACING

FACING SEAM

SHOULDER SEAM

TURN BACK FOR BOAT NECKLINE

JIFFY WITH BOAT NECK

(made from a pillowcase)

Wear as a dress or tunic topper with shorts or pants.

about size 12

Supplies: 1 border-print pillowcase
thread

1. Open up or trim off end seam of pillowcase. Some pillowcase seams will have a selvage (finished edge). Keep wrong side out.
2. Place, pin, and cut out the pattern across the top of the pillowcase.
3. Using carbon paper, *lightly* mark the facing, shoulder, armhole and side tuck lines.
4. Stitch in the tuck on each side just under the armhole.
5. Make openings for armholes.
6. Turn under raw edges of neck facing and edgestitch unless there is a selvage.
7. Sew the facing and shoulder seams together, with both facing seams to one side. (When one side of the neck facing is turned back, the shoulder seam is completely covered.)
8. Turn under the raw edges of the armhole facing and edgestitch. Hand catch the armhole facing at the top of the shoulder.
9. On the right side of the pillowcase, fold each tuck into a pleat which comes together at the center. Reinforce with machine stitching at each end.
10. Move the pattern down on the pillowcase for a shorter JIFFY or let out the hem for more length.
11. The JIFFY can be ironed flat.

Regular, king, queen, and child's size pillowcases will determine final JIFFY size. Washing and pressing the pillowcase before sewing is suggested because some will shrink.

STITCH A 1¼ INCH WIDE AND A 4 INCH LONG TUCK ALONG EACH SIDE JUST BELOW THE 7 INCH ARM OPENING. REINFORCE EACH END OF THE STITCHING LINE BY BACKSTITCHING ½ INCH.

THE TUCKS ARE LATER FOLDED INTO AN INVERTED PLEAT ON THE RIGHT SIDE OF THE PILLOWCASE AND REINFORCED AT EACH END.

TO PILLOWCASE HEM

TO PILLOWCASE HEM

OPEN THIS SEAM FOR 7 INCHES
TURN RAW EDGES BACK AND EDGE STITCH

TURN BACK ON THIS LINE
FOR THE ARMHOLE FACING

CUT

1¼ INCHES

4 INCHES

TURN RAW EDGES BACK AND EDGE STITCH
CUT ALONG THIS FOLD FOR 7 INCHES

CUT

1¼ INCHES

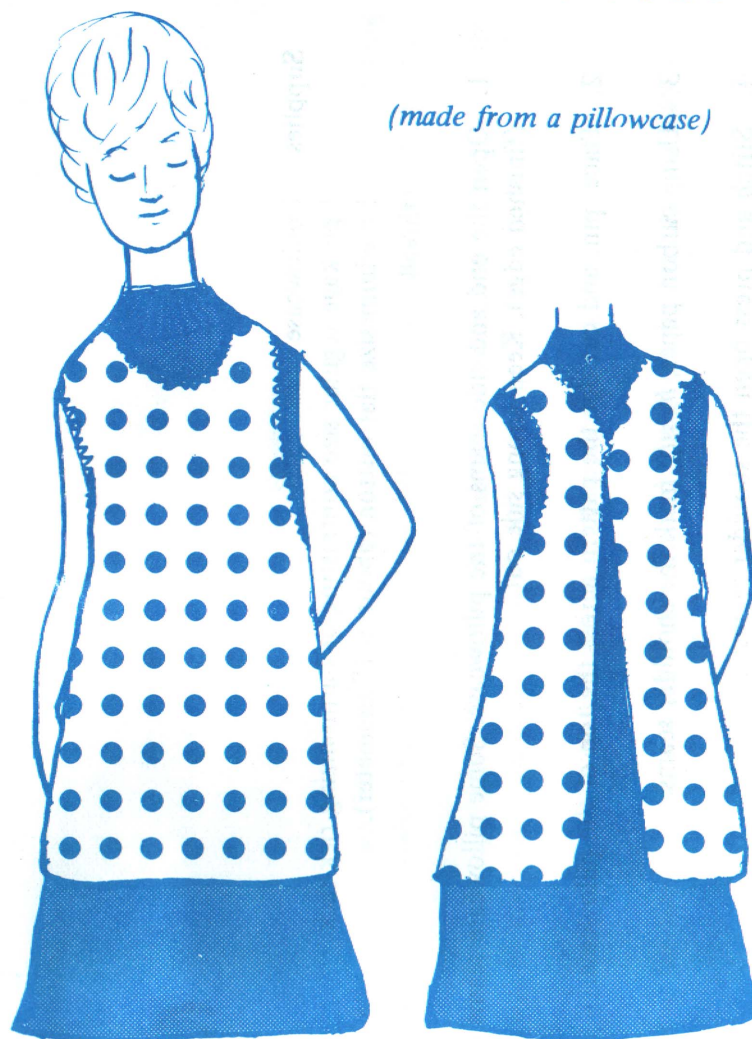
4 INCHES

JIFFY 8

Cover up

(made from a pillowcase)

Size - Adult



BY BERNETTA KAHABKA

Extension Specialist in Clothing

size adult

JIFFY COVER-UP

(made from a pillowcase)

Wear as a dress or tunic topper with shorts or pants.

Supplies: 1 pillowcase
1 package regular size contrasting or harmonizing rick-rack
1 medium size flat button (about $\frac{3}{4}$ -1" diameter).
thread

1. Open the end and side seams of the pillowcase. Some pillowcase seams will have a selvage (finished edge). Keep wrong side out.
2. Place, pin, and cut out the pattern across the top of the pillowcase.
3. Using carbon paper, *lightly* mark the shoulder seams.
4. Stitch and press open the shoulder seams.
5. NOW TRY ON TO SEE IF THE ARMHOLES ARE LARGE ENOUGH.
6. Finish off the neck and armhole edges with rick-rack.

- a. Place the rick-rack along the edges on the right side of the material and carefully stitch right thru the center of the rick-rack. Leave an extra 3 inches of rick-rack extending at one back neck corner.
- b. Turn the rick-rack over to the back. Stitch a second time along the edge of the material on the right side. Use the narrow side of the machine presser foot as a guide.

TO PILLOWCASE HEM

TO PILLOWCASE HEM

END SEAM

BUTTON AND RICK-RACK LOOP

UNDERARM

OPEN PILLOWCASE SIDE SEAM FOR BACK OPENING

