

Michigan State News

FRIDAY, OCT. 4, 1929

Number 5

Don't Forget to
Take Your Coupon
Books to Ann Arbor

Michigan Game
Tomorrow in
Twenty-Fourth

NO, ZAETCH, LOWRY APPOINTED HEAD CORPS FOR ENSUING YEAR ACCORDING TO COLONEL E. DAVIS

Appointments to Take Effect Immediately; Majors' Posts for Three Divisions Are Given to Paul Troth, Inf.; Cass Kershaw, Cav.; Loren Jenkins and Vernon Donaldson, Art.

Appointment of officers for the Michigan State R. O. T. C. for ensuing year was announced today by Col. Edward Davis and staff, to take effect immediately. The corps is headed by Lieut. B. Meno of St. Clair, as student colonel, assisted by Lieut. Colonels Theodore N. Zaetch, of Algonac, and Robert D. Lowry, of Midland. Majors' appointments for the three divisions given to Paul H. Troth, Jr., infantry, Cass J. Kershaw, cavalry, Loren W. Jenkins and Vernon H. Donaldson, coast artillery.

Captains
Infantry battalion: Lawrence S. Smith, Albert W. Sachs, Walter Peterson and Joseph A. Porter.
Cavalry squadron: James H. VanZylen, Horace M. Ocker, Albert A. Miller, Ferris H. Osborn, Allan H. Wright and Lester R. Cribbs.

Artillery battalion: Captain and Adjutant Glenn R. Burns, Captains James G. Hayden, Kenneth W. Thompson, Leonard Coffey, Henry B. Morse and Raymond L. Jennings.

First Lieutenants
Infantry battalion: Edward K. H. Clare W. Hendee, W. H. and Lester A. Crane.
Cavalry squadron: Lloyd J. Goulet, E. Bredahl, James B. Richards, T. Knutson, Don B. Grove, C. Totten, Robert K. Knight, M. Merritt, Connor D. Smith, W. W. Smith, Herbert E. Moore, D. Cain, Kenneth B. Vaughn, Wilson and Erwin H. Wilcox.
Artillery battalion: Franklin Bell, Hubert O. Miller, John J. H. M. Corless, William M. Arvo, N. Niemi, Maurice M. Amos, J. Hawkins, Lewis J. and John E. Baird.

Second Lieutenants
Infantry battalion: Ross J. Porritt, Hugh C. Campbell.
Cavalry squadron: Richard S. John W. Welch, Clayton C. Howard E. Bryant, Henry D. Robert R. Toles, Russell W. Kenneth F. Lafayette, M. Putnam, Stanley Markiewicz, B. Northrup, Kenneth T. Herbert J. Rathe, Franklin and Karl Cran.
Artillery battalion: O. F. Ray, L. Greenman, George T. M. Adam, P. Schuch, Thirur L. Kenneth M. Knudson, Charles Frederick J. Burns, Jr., Theodore Carbine and Reynold C. Ans.

LS CHOSEN FOR GLEE CLUB

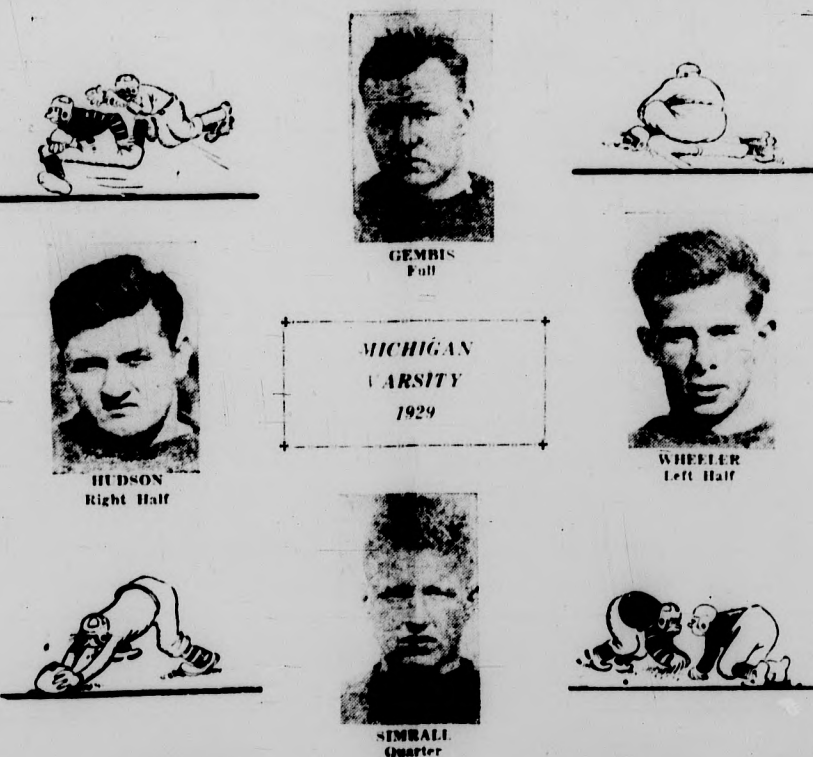
Members of Club Are Hawley, Hardy, Platt, and Morse; Miss Humphries Directs.

Members of the Girls Glee Club chosen Thursday afternoon at a tryout under the direction of Miss Humphries. The club is composed of the following: First, Audrey Clark, Harriet Pendle, Streeter, Frances Russ, Ruth White, Celeste Doyle, Marie Mil-Mary Ellen Davies, Eleanor Bar-Mary Lou Goodman, Jane Platt, Bernice Hawley, Mildred Morton, Jude Bingham, Jennette Tranchell, Shaw, Florine Redfield, and My Halbach.
Soprano are Lena Lou Hunt, Auble Shirley Medore, Elizabeth Rheta Hullinger, Virginia Day, and Caley, Marjorie Royce, Jean Foster, Madeline Thornton, Betty Parshaw, Marie James, Margaret Mackley, Harriet Stephenson, and Ruth Mills.
Altos include Barbara Peak, Evelyn Hardy, Zephia Walter, Pauline Sandman, Helena Close, Lorraine Kenfield, and Westbeck, Peg Crummer, Jean Overse, Clara Wilson, and Marian Wyley.
This year there will also be a first club sponsored by Janette Trachel, Kathryn Paner, Jane Platt, Elizabeth Gordon, Mary Ellen Davies, Beatrice Roddy, Catherine Hawley, Marian Hawley, Maxine Sturgeson, Clara Wilson, Donna Westbeck, Barbara Peak and Evelyn Hardy.
The officers for the ensuing year are: president, Catherine Hawley; vice-president, Evelyn Hardy; secretary and treasurer, Jane Platt; and librarian, Lucile Morse.

CONVENIENT CAMPUS CALENDAR

TUESDAY—
3:30 p. m.—State meets Michigan on the gridiron in Yost Bowl at Ann Arbor.
WEDNESDAY—
7:00 p. m.—Sophomore class meeting in Old Hall.
THURSDAY—
7:30 p. m.—Landscape Club, Hort building.

State Must Stop These Men to Beat Michigan



CROWLEY GROOMS SPARTANS FOR STATE'S GREATEST TILT AS GAME TIME DRAWS NEAR

Lineup of Spartans is Uncertain as Coach Harry Kipke Announces Wolverine Starters: Dickson, Nordberg Doubtful Starters.

Michigan State's fighting Spartans left today for their annual tilt with the Michigan Wolverines at Ann Arbor Saturday afternoon. There is every reason to believe that Coach James H. "Sleepy" Crowley and his warriors are responsible for a good deal of uneasiness in the Wolverine camp. It will be remembered that in last year's encounter the Spartans outplayed the Wolverines throughout the entire game, the final score being Michigan 3, State 0. The game was a close one, and furiously contested.

The Spartans will invade the Ann Arbor bowl with the most formidable squad they have boasted in years. With a heavy, driving line, and a fast, shifty backfield with plenty of the necessary scoring punch, State's hopes of winning are bright.

Coach Crowley has been grooming his men for the past week for their encounter with Michigan, and from the way the Spartans looked during last night's practice he has done a thorough job of it. Those who the Detroit papers refer to as Kipke's "ghost" has been leading the pigskin with a vim and gusto that will give the Wolverines something to ponder over. Nordberg and Dickson, both speedy ball-carriers, may be expected to give a good account of themselves.

Freddy Danziger, State's plunging fullback, has been smacking the freshman line with an authority that is heartening to watch. He stands out as a veritable bulwark of strength at his center post.

In Saturday's game the contents of two great football mentors will be employed: those of Yost of Michigan and Rockie of Notre Dame. Crowley will use the Rockie system. Kipke will use Yost's. Crowley's method showed up to splendid advantage in last Saturday's game.

Saturday's conflict will be the twenty-fourth time Michigan State college and the University of Michigan have met on the gridiron. Interest in the game has been running at fever pitch as the date for the game looms up.

Although Crowley has not definitely decided his starting lineup, it is a safe guess that Fudge and Hain will anchor the whistle at the ends. Exo and Hudler at the tackles. Hayden and Streb appearing next to Smead at center.

The backfield is more problematical but a strong possibility is Grose at quarter, Captain Dickson and Nordberg at the halfback posts, and Captain Danziger at full.

MENO APPOINTS EDITORS OF BOOK

Editors Plan Larger and More Complete Book Than Ever.

With the appointment of the divisional editors, work on the 1930 Wolverine all-college annual publication, will begin immediately. The editors expect to publish a much larger and more complete book than last year.

Editorial heads as announced yesterday are as follows: Administration, Vera Murrell, (Misses), Isabelle Paulson, Spartans (feature), Irene Chapin; Athletics, Bruce Fawcett and John Knight; activities, William Pratt; fraternities, Edie Erickson; sororities, Margaret Stephens; women, Mary Jennings; feature, Mary Lou Lipka.

One of the outstanding changes planned for this year according to Harold B. Meno, managing editor, is that the size of the pages will be 9x12 inches instead of 7x9 as in previous years. Approximately the same number of pages will be used as last year, thus better mechanical make-up and a more complete coverage of campus activities will be included in the 1930 Wolverine. Another feature of this year's annual will be the special effort to incorporate more pictures than were used in the 1929 issue.

Because all the students have not as yet signed up a desk will be maintained in the Union lobby every afternoon from 1 to 5 p. m. All students who want the 1930 Wolverine must sign up this term.

DAIRY TEAM RATES FIFTH IN TOURNAY

State Judging Team Wins Two Firsts in National Dairy Congress.

Word was received here Wednesday by the dairy department that the Michigan State dairy judging team made a good showing in competing at the Waterloo National Dairy Congress at Waterloo, Iowa, this week. The team placed fifth with 12 colleges representing all parts of the nation.

Besides the team rating the Michigan State representatives won first place in the Holstein class, first place in the Brown Swiss division, third in Ag-Shires, tenth in Guernseys.

Jess Bird, senior member of the State team, placed ninth in the all-breeds judging contests in which about 60 tan aggregation were. Herb A. Miller, E. P. Keisley and Lauren Key, Geo. E. Taylor, associate professor in dairy, accompanied the team as coach.

An ambitious schedule has been made out for the State judging team. They will compete in the National Dairy show to be held in St. Louis, Missouri, from Oct. 12-19.

Minneapolis, Minn. — (AP) — Co-eds at the University of Minnesota have petitioned the fraternities of the university to have their parties begin earlier in the evening, and close at least by 1 a. m.

PATTENGILL PRAISES SPARTAN ATHLETES

Former Wolverine Star Commends Record Against Michigan Teams.

Michigan States record against teams of the University of Michigan is very commendable, Victor Pattengill, former Michigan grid star, declared Wednesday night at the annual M. S. C. U. of M. alumni banquet at the Union Memorial building.

The former athlete told of States fine record against the university in all sports and said that while Michigan has most always held a big advantage, State has crashed through many times with victory.

Benny Osterbauer, famous all-American and present member of the Michigan coaching staff, declared that "If State wins Saturday it will be only because they have a better team."

Speaking in behalf of State was Coach Crowley while H. Lee Bancroft, superintendent of city parks of Lansing, was toastmaster for the event.

PEOPLES CHURCH TO HAVE FULL PROGRAM

Sunday to be a Busy Day; S. C. L. C. G. A., S. C. U. to Have Programs.

Old and new students will find a cordial welcome and special programs prepared for their benefit by the student religious organizations of the campus meeting in the student department of the Peoples church next Sunday.

The Student Citizenship League is an organization for the men of the campus and the program of next Sunday will include a talk by the student director, Norman W. Kunkel on "The Place of Religion in a College Man's Life." The group meets at 12.

The Campus Girls Assembly also meets from 12 to 12:45 and has special music as a feature and an address by Miss Lovell on the theme, "If I Were a Leader." The program is in charge of Georgia Brown, 30, president.

The Student Christian Union has an afternoon social hour from 5 to 6, at which time there is opportunity for fellowship. Light refreshments are served by a committee of which Bernice Peterson, 20, is chairman. The meeting at 6 o'clock will have as its theme, "Education Through Friendship" and the speakers will be Jess Bird, Ruth Clark, Mary Pennington and Clarence Prevett. Dean Elizabeth Conrad will be the honor guest of the evening and will give a short closing talk. Student men and women are invited to the Student Christian Union.

JAEHNIG PLANS SOPH ACTIVITIES

Homecoming Most Popular Date for Fall Term Parties; Many Open-Houses Listed.

Appointments to Fall term committees of the sophomore class were made yesterday by Howard T. Jaehnig, class president. Dates for two of the three important functions were also announced at the time.

The first activity, the annual class rush, will be staged Saturday, Oct. 19. Heading the committee, which will handle this affair is Kenneth Lafayette, chairman, with Robert Bursick, David Swanson, R. A. Brodin, Alfred Brose and T. Van Patten assisting.

While the date for the sophomore prom has not been definitely set, the committees have been named and expect to start work within a week.

George Markie is general chairman. Three sub-committees are as follows: Decorations, with Josephine Thompson, chairman; R. N. Arbury, Marian Hawley, Russell Patch, Music, M. M. Pfling, chairman, Theresa Seely, B. D. Boswood, Tickets and publicity, Earle Curtis, chairman, Ruth Ranney, Norman Miller, Harold Macnus.

The barbecue, which will be held Nov. 22, is to be managed by Dale Vaughn, chairman of the committee. Sub-committees are: Program, Robert Farney, chairman; Betty Oswald, David Kilpatrick, Food, Edward Carbine, chairman; Marian Kline, Jean Caruthers, Francis Stedman, Paul May, Dance, Robert Sharkey, chairman and Donna Bartlett.

The initial meeting of the sophomore class will be held Monday, Oct. 7, in Olds Hall at 7 p. m. Certain matters of interest to every second-year man will be taken up, including class rush and setting of date for the party, so it is very important that all sophomores be present.

CAMPUS GIRLS ASSEMBLY SPONSORS QUESTION BOX

Is To Be An Open Forum Next Sunday.

The Campus Girls Assembly are sponsoring a question box Sunday, Oct. 6, 1929. It is to be conducted like an open forum. Any girl who has a question she would like answered at this meeting is to see that Bernice Saxton receives it. Questions may either be mailed to the Alpha Phi house or given to her personally. Mrs. Johnson will be in charge of the assembly.

When during the middle of the week, the supply of tickets was running low, Primodig sent for 1,000 extra. Late last night over half of the extra allotment were sold and the ticket office expects to sell out before the office closes today at 5 p. m.

It will be necessary for the Michigan State students who attend the game to present their passbooks at the gate at Ann Arbor besides taking their reserved ticket stub.

PATRONIZE OUR ADVERTISERS
Three neckties cleaned and pressed with each suit at TWICHELL'S Dry Cleaners. (Phone 5-3316). 211 M. A. C. Ave.

ENTHUSIASM SHOWN FOR MICHIGAN TILT

Students Turn Out in Large Numbers for Big Pep Meeting at Gymnasium.

In spite of inclement weather and many rushing papers, members of the student body turned out in large numbers for the "Big Michigan" pep meeting sponsored by Blue Key in front of the gymnasium night.

Coaches, James H. Crowley and Glen Carberry, both veterans of Notre Dame and now mentors of M. S. C. spoke to the crowd and seemed ready and anxious for Saturday's tilt.

In the absence of football captains, Verne Dickson and Fred Danziger, Forest Rhinehart, ex-baseball captain and leader of Switz Creek band, gave a fight talk to the gathered student.

He urged them to give full support to the team at Ann Arbor.

Rhinehart and his band of clown musicians played several numbers from the steps of the gym, including the fight song, and closed the meeting with Alma Mater.

The six Spartan cheer leaders who all lead tells in the Ann Arbor bowl on Saturday were on hand for the meeting. The cheer leaders introduced a new novelty ball which will be used Saturday night, and around the S-T-A-R-E-E locomotive making use of initialed cards.

The cheer leaders who are going to Ann Arbor are Paul Troth, 30, Westman Blosser, 31, Howard Mitchell, 32, Lloyd Rowland, 33, Edward Sweet, 33, and Carlton Spencer, 28.

SEAT SELL-OUT HERE FOR WOLVERINE TILT

Nearly 6,000 Tickets Passed Out for Annual Michigan State-Michigan Battle.

With a complete sell-out of the block of 5,000 seats for the Spartan fans and an expected sale of the 1,000 extra duets, Lyman L. Primodig, assistant director of athletics and in charge of ticket sales, believes that the largest delegation ever sent to Ann Arbor by Michigan State fandom will watch the Spartans Saturday.

When during the middle of the week, the supply of tickets was running low, Primodig sent for 1,000 extra. Late last night over half of the extra allotment were sold and the ticket office expects to sell out before the office closes today at 5 p. m.

It will be necessary for the Michigan State students who attend the game to present their passbooks at the gate at Ann Arbor besides taking their reserved ticket stub.

NOTABLES TO LECTURE HERE

Count Von Luckner, Dr. Murray, Graham McNamee, Arthur Pillsbury on Program.

According to Professor W. W. Johnson, head of the English department, plans for the artists' course for this winter are near completion. The program this year includes four world-famous men: Count Von Luckner, Dr. John Murray, Graham McNamee and Mr. Arthur Pillsbury.

On December 12 Dr. Murray will lecture here on one of the following topics: "Political Tendencies in England Today." The British House of Commons from the inside" or "Personalities in British Politics."

He has led a brilliant political and academic career. Born in Aberdeen, where he was educated at Robert Gordon's college, Aberdeen, graduated from Aberdeen university and then attended Oxford, becoming a prize-fellow of Merton's college, Oxford, in 1905.

He was censor of Christ's church from 1910 to 1915, then holding a position in the ministry of munitions from 1915 to 1918. He was elected to the British Parliament from Leeds, serving from 1918 to 1923.

Mr. McNamee is well-known to all. He has probably spoken to more people than any other human being in the world's history. He combines a delightful evening of song and story in a lecture-recital, "Telling the World," which he will give here sometime during the winter term.

When Mr. Pillsbury, naturalist, botanist, biologist and sensational picture-maker appears here on February 13 he will show the first moving pictures ever made by x-ray. These are the result of a lifetime devoted to nature-study and photography. The apparatus used in making the picture is an invention of his own.

Count Von Luckner is the famed German "Sea-Devil" of World War fame who sank 500,000 tons of ships, took hundreds of prisoners without killing a man and led his prisoners champagne and cake. On March 6 he will tell of his remarkable exploits.

FRATERNITY AND SORORITY BOWLING TO BEGIN SOON

Fraternity and sorority bowling for the fall term is rapidly nearing the starting date. Schedules have been compiled by L. L. Primodig, assistant director of athletics, and the society teams are getting in a little early season practice. All matches are to be played in the Olympic-Rainbow alleys.

PATRONIZE OUR ADVERTISERS
Three neckties cleaned and pressed with each suit at TWICHELL'S Dry Cleaners. (Phone 5-3316). 211 M. A. C. Ave.

Michigan State News

Published daily during the college year by the students of Michigan State University at East Lansing, Michigan.
The Michigan State News office is located on the fourth floor of the Union building.
Telephone, college exchange, extension 164.

Representatives—College Special Adv. Ass. Inc., 805 Fifth Ave., New York City, 615 N. Michigan Ave., Chicago, Ill. Roy Barnhill, Inc., 40 E. 10th St., New York City, 80 Boylston St., Boston, Mass., 410 North Michigan Ave., Chicago, Ill.

Materials appearing in the Michigan State News are written by the editor-in-chief and his assistants, who are students. They can be used by other students representing the official viewpoint of the college or of the college officials.
Subscription, \$1.50 the School Year.

EDITORIAL STAFF			
Managing Editor		Phi Kappa Tau House	
J. A. PORTER			
News Editor		Union Literary House	
PAUL TROTH			
Assistant Editors		Hormian House	
James S. Hawkins		Economic House	
Alfred C. O'Donnell		Woman's Editor	
Ed. Miller, Sports Editor		Chi Omega House	
KATHRYN L. FANER		Robert C. Graham	
Music Critic		Katherine Lynch	
Feature Editor		Neal Horning	
Society Editor		Exchange Editor	
Irene McKee		Reporters	
George Merkel		Doct Watkins	
Timothy Anthony		Dorothy Leth	
Jack Green		Gertrude Morony	
Wilford Ehl		Elin Richards	
Norman Reeder		Dorothy Troth	
Dick Elder		Ruth Bragg	
George Sprunk		Marjorie Zomke	
BUSINESS STAFF			
Business Manager		Electric House	
L. N. RETTER		Phi Delta House	
Robert Davey		Accounts	
Roy Sample		Kappa Delta House	
Dora Worden		Advertising	
Frank Conover, Maurice Irwin, Roger Arbury			

ON TO MICHIGAN

Tomorrow's meeting on the gridiron at Ann Arbor between Michigan's two oldest educational institutions marks the twenty-fourth football game between the two schools. In the interim between 1898, the date of the first meeting, and today, Michigan State has been more or less the underdog but State is now at the beginning of a new era and with Coach Jimmy Crowley at the helm with his Notre Dame system gained from such a notable tutor as Knute K. Rockne, different things are to be expected of Spartan football teams.

Michigan State does not go into tomorrow's tilt the underdog. She will answer the opening whistle with heads up, a fighting spirit never before aroused, and with a feeling of confidence that the Michigan Wolverine is to be snared, cornered and trampled down in its own lair.

From the lowest substitute to State's two great captains and from the field to every nook and corner of the campus the same spirit of a new-born confidence is evident. Always more or less hopeful before a Michigan game, the spirit has turned from mere hope to a conservative, methodical, cool calculation as to just how powerful this Wolverine is we have been hearing about. There is no idle jesting in the Spartan camp as to how bad State will beat Michigan but only the impatient, restless waiting until the great hour arrives.

Tomorrow is your day, Jim Crowley, and we trust that the tools you have placed in the hands of your team to go out and meet the Wolverine will be sufficient to baffle his claws and dull his teeth and after the final gun, leave his body, battered, bruised, and totally subdued on the field of battle—the Wolverine of Michigan.

S'NO USE

Diogenes, when last heard from, was still pursuing his wearisome quest for an honest man. Whether or not he ever extended his search to a college campus has not been recorded. But since the gentlemen have been getting around so much the last thousand years or so, poking the lantern into millions of faces trying to detect a simon-pure countenance, maybe he ought to be on the lookout for a few of those mythical personages that are reputed to be on every college campus:

The fellow that brags about never having "cut" a class since he started to school.

The instructor who warns about believing some of the rank statements that he might make in the course of a discussion.

And the professor who contends that he reads every single line of the examination papers.

The fellow that has as much work to do as he really thinks he has.

"I have never been on a picnic," said the co-ed.

The fraternity steward that claims he really plans the meals to suit all the men in the house.

The rushing chairman that tells the rushee that his fraternity absolutely is not contemplating building a new house.

"I have worked my entire way through school, without aid," says a former campus leader.

Those individuals who do not want publicity.

"My intelligence comes as a result of hard work and everlasting toil." And the "student" keeps on talking.

The instructor who has really waded through all the references that he gives to his classes.

The would-be athlete who admits he never played on the high school basketball, football or baseball team.

The date that argues, that she really doesn't care for anything to eat this evening.

Douse the glim, Diogenes. It's no use carrying the lantern around on a college campus looking for that honest man. Strung along the fellow friends is an art for the student, and professor doesn't do such a bad job.—Daily Nebraskan.

A girl isn't necessarily timid because she jumps at a conclusion.

Be sure of your fatted calf before essaying the role of the prodigal son.

Many things may be preserved in alcohol, but law and order are not on the list.

A family jar is never used in preserving peace.

Silence may be golden, but a good deal of speech is brazen.

CAMPUS FORUM

Once more the annual Swartz Creek band-variety band conflict arises in which the sophisticated variety band attempts to wipe out completely its supposedly inferior opponent. Is the traditional clown band, an institution which all students claim as a part of their collegiate lives, going to give way to the somewhat youthful all-powerful gathering machine, the variety band?

The locking up of the band room and instruments Wednesday night to Swartz Creek band members and the attempt to forbid them to play at the biggest pep meeting of the year last night seem to have brought the whole affair to a head. In questioning certain members of the Creek organization we find that they have received no explanation for such seemingly spiteful actions. In fact there has never been a public explanation made. Such a thing would certainly be in order, it would seem. In talking to various people whom we connected with both organizations we have found that only funny and unground reasons have been offered to them in a spiteful and inelegant manner.

They, the variety musicians, are rather childish, that the comedians are a "black-eye" to the school and its music department in that it does not produce a high grade of music and is a "tramp outfit." Why as a matter of fact we don't go to pep meetings, basketball games, barbecues, etc. to hear classical music as rendered by a New York philharmonic orchestra. Swartz Creek has only a certain few purposes to serve and gives the job in fine style. It has made a name for itself all over the state playing for various banquets, conventions, and what-nots.

Of course we must admit that the variety band has its specific duties to perform and has done them well and impressively in the past. But when conflict enters between these two culturally different types of organizations is far beyond normal comprehension. Swartz Creek demands little or no financial backing from the college, it being an almost entirely independent club.

Pep meetings, barbecues, basketball games, sport banquets and such popular college activities would be dull without the traditional clown. We see to let one of our few traditional institutions, again, the variety band, Swartz Creek band, be ruled out of our school lives by petty motives and desires.

A. C. G. 41

BAND PREPARED FOR YOST PARADE

Absence of Johnny Gould, Drum Major, to Handicap Appearance of Musicians.

After two weeks of intensive drilling the M. S. C. military band will parade Yost stadium tomorrow afternoon, competing in its own line with the famous University of Michigan musical organization. It will be materially handicapped in its appearance at Ann Arbor by the absence of "Johnny" Gould, State's veteran drum major who is still recuperating from a recent operation.

Following a brief period of try-outs, Leonard Falcone, director, has succeeded in filling the post left vacant by last year's graduating class. Approximately 30 freshmen musicians were incorporated into the unit and were given nightly drills in field maneuvering under the tutelage of the college military department. Although State band will undoubtedly miss the polished performance of Gould it has been promised that a recruit battery will be on

PATRONIZE OUR ADVERTISERS



If for cooking tips you learn, come in here—yourself here. Says our friend.

You see our chef didn't get it all out of a cook book—he's had a lot of practical experience preparing foods so as to bring out their full flavor and good worth.

Boston Cafe

QUICK SERVICE FINE FOODS

An Ideal Eating Place 115 West Michigan Avenue

John E. Hecko, D.D.S.

DENTIST

208 Abbot Building Phone 3024

For Quick Reference

Here is a companion for your hours of reading and study that will prove its real value every time you consult it. A wealth of ready reference material, words, phrases, names, places, is instantly yours in

WEBSTER'S COLLEGIATE

The first abridged dictionary because it is based upon the "Standard" Webster's NEW INTERNATIONAL DICTIONARY. Contains 108,000 Vocabulary Terms, including six dozen New Words, with definitions, etymologies, pronunciations, and indications of proper use—a dictionary of Biography—Gazette—a special section showing, with illustrations, the rules of punctuation, use of capitals, abbreviations, etc.—foreign words and phrases—1,250 pages—1,700 illustrations.

Look for the Circular Trade-Mark

G. & C. MERRIAM COMPANY Springfield, Mass.

Look for the Circular Trade-Mark

G. & C. MERRIAM COMPANY Springfield, Mass.

G. & C. MERRIAM COMPANY Springfield, Mass.

G. & C. MERRIAM COMPANY Springfield, Mass.

G. & C. MERRIAM COMPANY Springfield, Mass.

G. & C. MERRIAM COMPANY Springfield, Mass.

G. & C. MERRIAM COMPANY Springfield, Mass.

G. & C. MERRIAM COMPANY Springfield, Mass.

G. & C. MERRIAM COMPANY Springfield, Mass.

G. & C. MERRIAM COMPANY Springfield, Mass.

G. & C. MERRIAM COMPANY Springfield, Mass.

G. & C. MERRIAM COMPANY Springfield, Mass.

G. & C. MERRIAM COMPANY Springfield, Mass.

G. & C. MERRIAM COMPANY Springfield, Mass.

G. & C. MERRIAM COMPANY Springfield, Mass.

G. & C. MERRIAM COMPANY Springfield, Mass.

G. & C. MERRIAM COMPANY Springfield, Mass.

G. & C. MERRIAM COMPANY Springfield, Mass.

G. & C. MERRIAM COMPANY Springfield, Mass.

G. & C. MERRIAM COMPANY Springfield, Mass.

G. & C. MERRIAM COMPANY Springfield, Mass.

G. & C. MERRIAM COMPANY Springfield, Mass.

G. & C. MERRIAM COMPANY Springfield, Mass.

G. & C. MERRIAM COMPANY Springfield, Mass.

G. & C. MERRIAM COMPANY Springfield, Mass.

G. & C. MERRIAM COMPANY Springfield, Mass.

G. & C. MERRIAM COMPANY Springfield, Mass.

G. & C. MERRIAM COMPANY Springfield, Mass.

G. & C. MERRIAM COMPANY Springfield, Mass.

G. & C. MERRIAM COMPANY Springfield, Mass.

G. & C. MERRIAM COMPANY Springfield, Mass.

G. & C. MERRIAM COMPANY Springfield, Mass.

G. & C. MERRIAM COMPANY Springfield, Mass.

G. & C. MERRIAM COMPANY Springfield, Mass.

hand to lead the Spartan musicians down the field.
In view of the long-standing tradition of gridiron clashes, and the fact that the Michigan band is under the leadership of Mr. Falcone's brother, it is expected that a mutual exchange of courtesies will take place. In addition to the usual formation of block ends, the two units are slated to also form the "S" and "M" of their rival.
The list of bandmen who will go on the trip are as follows:
Clarinets—W. C. Barwick, C. G. Fisher, P. C. Jewell, E. C. Rolfe, E. M. Gregg, D. J. DeVos, J. Gottschalk, W. B. Haulen, R. Metz, J. H. Stenger, P. F. Bennett, D. Brockett, C. W. Huber, W. F. Lake, D. B. Marshall, P. S. Palmer, R. B. Patch, H. A. Stephens.
Cornets—D. D. Choffe, J. D. Wieland, K. B. Sage, W. L. Rand, W. E. Hartman, F. W. Conover, S. E. Lamm, D. Jones, and O. L. Wheeler.
Trombone—H. R. Auland, J. H. Gardner, D. E. Moore, P. H. Fitzpatrick, L. H. Gregg, W. J. Porter, L. F. Sanford, K. V. Washburn, and J. S. Woodman.
French Horns—J. D. Avery, L. J. L. Bates, and L. R. Smith.
Baritone—S. H. Jackson, H. F. Johnson, and A. H. Valentine.
Oboe—H. R. Kline, and G. T. Wentworth.
Flute and Piccolo—G. T. Hunter.
Cymbals—F. C. Scott, and W. D. Emmons.
Basses—K. W. Brewster, J. H. Lorce.

Grace E. Lyon Cafe

Hours—6:30 to 7:30
H. A. LYON, 21, Manager

FOR SALE

Ladies Opposum Fur Coat;
Vega Banjo and Mandoline;
Electric Iron; Officers Boots, size 7; Tuxedo, size 37; Books, Sociology, Chemistry, Physics, French and others.
CALL 1968 or 302 M. A. C. Ave.

The seat won't seem so hard at the end of the session when you're energized by a breakfast of SHREDDED WHEAT. The vital food elements, vitamins, proteins, carbohydrates, mineral salts, bran—all answer "present" in

Shredded Wheat

EAT IT WITH WHOLE MILK

Fall Shoes for Men

We have them—real ones—Walk-Over—all-weather, meaty shoes of dump leathers, heavier for cooler days—grains—Ergones—all so good-looking that they'll "pep up" any fall suit. See the latest styles in our windows—or, better still, come in and get some on your feet. The feeling will speak louder than any words of ours.



Burton's Walk-Over Shop

221 South Washington Ave. LANSING

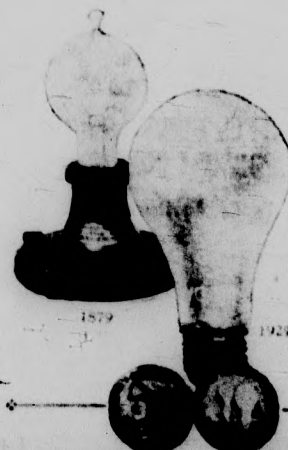


Autumn of '79

While Yale and Princeton were battling to a tie at Hoboken, New Jersey, a small group of scientists, directed by Thomas A. Edison, was busy at Menlo Park, only a few miles away. On October 31, their work resulted in the first practical incandescent lamp.

Few realized what fifty years would mean to both electric lighting and football. The handful who watched Yale and Princeton then has grown to tens of thousands to-day. And the lamp that glowed for forty hours in Edison's little laboratory made possible to-day's billions of candle power of electric light. In honor of the pioneer achievement, and of lighting progress, the nation this year observes Light's Golden Jubilee.

Much of this progress in lighting has been the achievement of college-trained men employed by General Electric.



GENERAL ELECTRIC

GENERAL ELECTRIC COMPANY, SCHENECTADY, NEW YORK

to Ann Arbor Diminishes Social Events of Week End

ALL DAYS, and the campus folk are turning to sports. Everywhere and any time groups of students dressed in gay sport clothes may be seen rushing about. The tennis courts are crowded and the downtown golf courses are being well patronized. The week-end which begins tonight will be an interesting one, for tomorrow nearly the entire student body will migrate to Ann Arbor for the really big game of the football season. Excitement, keyed up by the pep meeting last night, runs high and it is certain that the enthusiastic cheering section will back the team when they appear on the field tomorrow.

Many are planning to spend the remainder of the week-end in Ann Arbor, Detroit and other places that but few parties have planned for the week-end. The Delphi fraternity is the scheduled, choosing tonight to hold their first open house, and Mrs. H. Wyngarden, Prof. and Mrs. L. C. Plant and Mrs. E. A. Gee are to be guests and dance music will be furnished by the Play Boys.

Not only to the game is the M. S. C. U. of M. band which took place in the dining hall of the Union building Tuesday evening. At this is only the second ever held, the gathering done much to increase school spirit and interest in the coming games.

W. A. A. PRACTICES BEGIN IN EARNEST

Soccer, Hockey, Fencing, and Bowling Listed in Co-Ed Sports for Fall.

W. A. A. sports started in earnest September 30, with the practices for hockey which takes place on Mondays and Thursdays from 5 to 6, and on Tuesdays and Wednesdays from 4 to 5, being well attended.

Soccer, the other major sport, meets on Mondays and Thursdays from 4 to 5, and on Tuesdays and Wednesdays from 5 to 6. Although there are not so many girls who follow this as hockey, it is well under way. For both of these major sports, six practices are required before October 31 for team membership.

Two minor sports for this term are fencing and bowling. Fencing meets in the fencing room any day from 1 to 6, or from 4 to 5. Co-eds may bowl on any week day from 1 to 6 at either Rainbow or Olympic alleys, and from 8 to 12 on Saturday. Ten games are required for team membership and all score sheets should be left with the alley manager.

PATRONIZE OUR ADVERTISERS

Students Begin Trek to Ann Arbor for State-U. of M. Game

Grand River avenue is lined, even this afternoon, with waving thumbs, and every student with a car is offering it up to trek Ann Arbor-ward tomorrow morning. Every student with a car, also, incidentally, is convinced that there never was such a popular man as himself on this campus, and this conviction will remain with him until Saturday evening, when, returned from the big battle, deeper obscurity than ever will await him. But people lawn on their bitterest enemies just now, if those enemies own transportation.

Few of us really think we're going to beat Michigan, but a lot of us wish we had the poor judgment to think so. After all, it's been done, a couple of times, back in the days when the football team at State trailed behind a plow.

Last year, too, if you'll remember, a little salt and pepper, and the Ann Arbor bowl might, without exaggeration, have been called a soup bowl. The weather in short, was dumb.

And that's why State is sending up fervent prayers for sunshine and lots of it tomorrow. It's no fun to sit on a wet bench in furs with that camp-dog odor while the teams push a foot at a time this way and that down in the mud, and the hand sinks to the ankles at each goose-step. Not much

MONEY GIVEN TO AID STUDY OF DISEASE

New York—(AP)—A total of \$122,000 has been given to New York univer-

sity and Bellevue hospital during the past year for the study of disease, it was announced recently by university officials. The institutions are now in the midst of an endowment campaign for \$250,000.

AFTER THE GAME YOUR GUESTS WILL BE PLEASED WITH OUR SERVICE DINING ROOM

Hunt Food Shop

OPEN UNTIL 8:30 EVENINGS OF MICHIGAN GAMES

M. S. C. CO-EDS DO YOU WISH TO SAVE ON YOUR HOSIERY PURCHASES

Then by all means drop in the store first time you are down town and see the new Hosiery Number that all the girls are buying.

We have them both in a beautiful chiflon with a narrow French heel and a service weight with a pointed heel. All the new fall shades. Every pair guaranteed perfect.

1¹⁵

CALL FOR 1215
HOSIERY DEPARTMENT
MANAGER
Miss Nova Spicer

SHUBEL
210 North Washington Ave.

WOMEN DELEGATES MEET AT H. E. BUILDING

Michigan Federation Women's Clubs is Guest of Home Economics Department.

Afternoon over 200 delegates, guests of the State Federation of Women's Clubs, which is now in Lansing, were guests of the home economics department of the Michigan State University. The delegates were taken to the practice house and the home economics building with a tea in the women's building. To accommodate the large number of people, the large number of people were in progress in all three buildings at once.

Lansing Dry Goods DRESSES — NOTIONS

135 E. Grand River

Collegiate Flower Shop

PHONE 3702

211 Abbot Road

Attention Students

The Lansing Cafe

Lansing's Most Up-to-Date
Restaurant
235 South Washington Avenue

HOMBURG HATS

High tapered crowns, narrow bound or welt edges—a favorite this season among well-dressed college men.

Schable builds style into this type of hat better than we have seen in any other. \$7 and \$8. The Maze Hat at \$5 and \$6. Fall selection of Heild Caps, \$2 to \$3.50.

Moderate prices prevail in all our lines. Look over our smart haberdashery—it is instantly appealing.

Our Two-Pants Suits at \$35 are unsurpassed in style, quality, pattern and tailoring.

MAY BROS.

The Hat Store of the Town
235 S. Washington Ave.
OPEN SATURDAY NIGHT

Portrait



Your portrait is always an appropriate gift. Its charm and individuality make it the ideal gift for the "one who has everything." Always an appropriate souvenir of any occasion.

LE CLEAR STUDIO

Capital National Bank Bldg.
Phone 5-2435 Lansing, Mich.

PHOTOGRAPHER

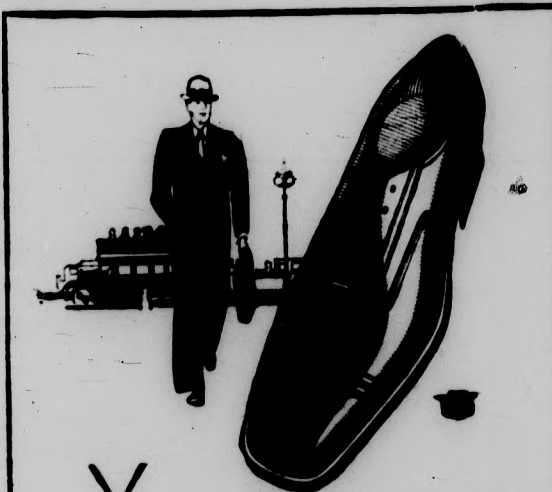


A PEN MORE PERSONAL than a pledge pin

A pen made to your order. Your choice of points. Your choice of holders. Your choice of color, size and style. You select the point and holder separately—then the dealer instantly, permanently joins them to make your

WAHL-EVERSHARP Personal-Point FOUNTAIN PEN

Need before such individuality? And a Wahl-Eversharp Pen, standard of the world, to match your pen in color, style and writing ability. Over at the Wahl-Eversharp dealers. See them now.



You can give your feet no greater satisfaction than to keep them attractively and comfortably dressed in FLORSHEIM SHOES.

Most Styles
\$10

MAX HARRYMAN SHOES

118 S. Washington Ave.

We Carry a Complete Line of COLUMBIA RECORDS, PHONOGRAPHS AND COLUMBIA-KOLSTER RADIOS Budd's Music House

318 S. Wash. Ave.

"EVERYTHING IN MUSIC"

Lansing, Mich.

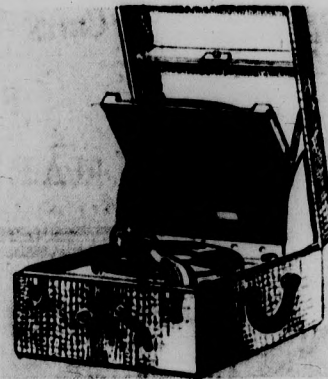


YOU'LL GET
AN AWFUL BIG KICK OUT
OF THIS LITTLE CASE!

MUSIC—the kind you want, when you want it, and where—it's all yours with the Columbia Portable. Why, it's just like having a private band right at your elbow! And the price leaves no headache! Just let your Columbia dealer put the Viva-tonal Columbia Portable through its paces for you—and you'll want it if it's the last thing you buy! It has the tonal beauty and volume of an expensive cabinet machine. It looks like a million—yet it costs only \$50!

If you like your melody in a more elaborate case, there's the electrically operated Columbia Portable at \$60. But if you feel economical, there's a Columbia Portable for only \$25.

Whichever one you pick, be sure these



exhilarating hits are in the record compartment:

Record No. 1934-D, 10-inch, 75c
SWEETHEART'S HOLIDAY—Fox Trot
HUGGABLE KISSABLE YOU—
Ted Wallace and His Campus Boys.

Record No. 1942-D, 10-inch, 75c
SINGIN' IN THE RAIN—(from Talking Picture Production "Hollywood Revue"). Fox Trot.
MY SOLE OF THE SHOE—(from Motion Picture "Drag")—Waltz—Ferre's Golden Hawaiians.

Record No. 1937-D, 10-inch, 75c
HOW AM I TO KNOW?—(from Motion Picture "Dynamic")—Fox Trot.
I'VE WAITED A LIFETIME FOR YOU—(from Motion Picture "Our Modern Maidens")—Waltz—Ben & Selvin and His Orchestra.

Record No. 1927-D, 10-inch, 75c
YOU MAKE ME LOVE YOU—Why Did You?—Fox Trot
YOU BELONG TO ME, I BELONG TO YOU—
Guy Lombardo and His Royal Canadians.

COLUMBIA "NEW PROCESS" RECORDS Rca U.S. Pat. Off.

Viva-tonal Recording—The Records without Scratch

Columbia New Process RECORDS

Here Below We List a Few of the Latest Hits on Columbia Records

- On Miss Hannah—Fox Trot—Paul Whiteman and His Orch.
- China Boy—Fox Trot—Paul Whiteman and His Orch.
- Too Wonderful for Words—Fox Trot—Isana Troubadours
- Steppin' Along—Fox Trot—Isana Troubadours
- Somebody Might Like You—Fox Trot—Lary Sisy and His Orch.
- It's You—Waltz—Lary Sisy and His Orch.
- Indiana—Fox Trot—Mound City Blue Blowers
- Fire House Blues—Fox Trot—Mound City Blue Blowers

BUDD'S MUSIC HOUSE

Have All the Latest Hits on Records, Player-Piano Rolls and Sheet Music
"EVERYTHING IN MUSIC"
South Washington Ave.
Sell Columbia-Kolster, Philco and Goldmans all Music Radios
Lansing, Michigan

KIPKE ANNOUNCES SELECTION OF 35 MEN FOR MAIZE AND BLUE VARSITY "A" SQUAD

Coach is Pleased With Showing of Team in Games With Albion and Mount Union; Has Thirty Players on Reserve List.



ANN ARBOR, Oct. 1.—Following the free-for-all football exhibition between Michigan and the Mount Union and Albion teams in the stadium Saturday, Coach Harry Kipke announced the selection of 35 men to compose the varsity "A" squad Monday afternoon. The remaining candidates, about 30 in number, will be on the "B" squad until they display work to merit their transfer while the present members of the "A" group may expect demotion if they "slide backwards."

The present first varsity list includes eight halfbacks, seven ends, six tackles, six guards, three centers, three fullbacks and two quarterbacks.

The ends retained on the "A" squad are Captain Joe Truskowski, Detroit; Leo Dravelling, Port Huron; William Tewitt, Bay City; F. M. Cornwell, Grand Rapids; Norman Daniels, Detroit; William Jones, Bay City; Jay Sikkenga, Muskegon.

At tackle Coach Kipke has retained Howard Auer, Bay City; Edwin Poorman, Chicago Heights, Ill.; Edward Hayden, Chicago; Tom Rouch, Grand Rapids; William Giltman, Dayton, Ohio, and Milton Bergman, Clarence, N. Y.

The guards: Al Steinko, St. Joseph; Howard Poe, Toledo, O.; Tom Samuels, Canton, O.; Thorwald Sorenson, Marquette; Ira Grinnell, Detroit; Ray Parker, Ann Arbor. The centers, aside from the veteran Allen Boyard of Ann Arbor, are William Brown, Sandusky and Ivan Smith, Toledo, Ohio.

Jim Simrall of Lexington, Ky., draws Kirk Holland, Evanston, Ill., as his rival man at quarterback. The three fullbacks are Joe Gombis, Ypsilanti, and two South rivals, Maynard Morrison, Royal Oak, and Omer Lafontaine, Iron Mountain.

The halfbacks are Jack Wheeler, Bay City; Alvin Dahlben, Jackson, Bay Hudson, Grand Ohio; Ray Priest, Battle Creek; William Heston, Jr., Detroit.

DEBATE TEAM TRY OUT DATES NAMED

Men to Try Out Oct. 15 While Oct. 16 Will Be the Date for Woman Team.

Try-outs for the men's debating team will be held on Wednesday, October 15, and the women will try-out on Thursday, October 16, according to J. D. Menchhofer, men's debate coach. Any man wishing to tryout who did not attend the meeting for debaters last Wednesday night, or who has not made arrangements with Mr. Menchhofer, should do so at once.

All women wishing to tryout should confer with Mr. Kachon, who will have charge of women debaters this year.

A tentative schedule has been made out for the men debaters. There will be dual debates with Alma and Oberlin during December of fall term. During March of winter term arrangements have been made for debates with other schools in the state, including Western State Teachers college, Albion, Hope, Detroit City college, and Detroit School of Law.

Also during winter term, there will be the annual debate triangle, consisting of Michigan State, Purdue and Marquette. At the end of spring term members of the team will attend the national debate tournament, which is to be held in connection with the national convention of Phi Kappa Delta, at Wichita, Kansas.

Men who have participated in past debates for M. S. C. and who are back are: A. A. Arnold, Escanaba; Howard S. Carroll, St. Johns; Barton Douglass, East Lansing; William Pratt, East Lansing; Carlyle Lovewell, Northville; Luc Verne Roberts, Lansing; and Edward Green, Lansing.

Come in and Get Your Copy of This Style Leaflet



Last minute information on style trends in clothing, shoes, hats and socks for college men—gathered from your campus and others. Come in for your free copy.

LEARBURY

Most Popular Clothing Among 1,000,000 College Men

HURD'S

LANSING AND EAST LANSING

WWW HURD HURD HURD

Rockne Against Yost, Features Tomorrow's Test



CAPTAIN DANZIGER



JAMES H. CROWLEY



CAPTAIN DICKESON



HARRY G. KIPKE

before his potentially good team really has power.

If the first games may be judged by Michigan is going to boast one of her strongest running teams in several years with end runs and off tackle plays cutting a big figure. The running appeared more of a threat than a regular weapon, but was fairly effective.

Wheeler and Simrall are to alternate at punting with Simrall, Truskowski and Wheeler doing the passing.

State-Michigan in the Past

1898 State	0, Michigan	39	1918 State	6, Michigan	21
1902 State	0, Michigan	119	1919 State	0, Michigan	26
1907 State	0, Michigan	46	1920 State	0, Michigan	25
1908 State	0, Michigan	0	1921 State	0, Michigan	30
1910 State	3, Michigan	6	1922 State	0, Michigan	63
1911 State	3, Michigan	15	1923 State	0, Michigan	37
1912 State	7, Michigan	55	1924 State	0, Michigan	7
1913 State	12, Michigan	7	1925 State	0, Michigan	39
1914 State	0, Michigan	3	1926 State	3, Michigan	55
1915 State	24, Michigan	0	1927 State	0, Michigan	21
1916 State	0, Michigan	9	1928 State	0, Michigan	3
1917 State	0, Michigan	27			

MEN! GET THAT NEW FALL HAT AT HALE'S

\$3.85 and Up

HALE HAT STORE

101 N. Washington Ave.

Students' Coffee Shoppe

TAKING ON BOARDERS BY THE WEEK AT SPECIAL PRICES.

Come in and see us about it!

J. NOLL, Proprietor

211 Evergreen Avenue

Carry "Sorority Sue" to the Game

THE NEW COLLEGIATE DOLL

Special This Week, \$1.95

THE MARY STEWART SHOP
ABBOT BUILDING

Sweet! Sweet!

CANDY OF ALL KINDS

Milk Coated Chocolates	49c
Peanut Crackle	25c
Lamb's Chocolates	89c
Golden Fluff	49c
Fresh Salted Peanuts	19c

TRY OUR NEW ICE CREAM

You will enjoy its smooth, velvety texture.

Save With Safety at the Rexall Stores

College Drug Co.

103 East Grand River

128 West Grand River

PROF. GOODENOUGH DIES: FORMER INSTRUCTOR HERE

Faculty Advisor of Big Ten Graduate at East Lansing; on Faculty Here.

Prof. George A. Goodenough, 61, of the University of Illinois, who died Monday at his home in Urbana, Ill., was a graduate of Michigan State college and former faculty member. It was revealed Thursday by Prof. W. O. Hedrick of the economics department.

Goodenough was widely known in the Big Ten circles where he was chairman of the Western Conference faculty committee on athletics and head of the Big Ten eligibility board.

Graduating from Michigan State with the class of 1891, the former faculty advisor went to Ann Arbor where he took graduate work at the university. While there he roomed with Prof. Hedrick for three semesters. Hedrick said that when he knew Goodenough he was opposed to all forms of athletics and sports competition.

After having taught mathematics and engineering at Michigan State for three years, Prof. Goodenough went to the University of Illinois as an instructor in engineering. He will be remembered for his work in designing and supervising the installation of the ventilation system for the new Holland tube under the Hudson river in New York.

Morrison, sophomore fullback, is expected to get in the action this week after being out 10 days with a leg injury, and will put on a good fight with Gombis for the job.

119th E. A.

ARMORY Dances

EVERY

Friday and Saturday

NIGHT

OPENING OCT. 4—We Will Look for You

Lewis Bros. COLLEGE SHOP Lewis Bros.

BEAT MICHIGAN

AND

We will replenish your wardrobe after the celebration

Buy "HER" a Football Doll for the Game

Lewis Bros. College Shop

STATE EAST LANSING

SUNDAY, MONDAY and TUESDAY

IT'S COLOSSAL!

The World's most glorious lovers brought to the screen with a splendor and magnificence never before attempted. Bewildering in the radiance of its setting.



WEDNESDAY and THURSDAY

100% ALL-TALKING



The HOTTENTOT



EDWARD EVERETT HORTON ~ ~ ~ PATSY RUTH MILLER ~ EDMUND BREES

FRIDAY and SATURDAY

100% ALL-TALKING



CHARLES (BUDDY) ROGERS

IN

The River of Romance

MARY BRIAN WALLACE BEERY

JUNE COLLIER

"America's Boy-Prince" in a new delightful role! Swagging as the "Notorious Colonel Blake"; Tower of Southern gentleness, delight of Southern ladies! Making love! With Mary Brian, his sweetheart of "Someone to Love". A romantic story of the gallant South! From Booth Tarkington's immortal novel, "Magnolia".