

Michigan State News

Founded in 1904

Published Tuesday and Friday afternoons by students of Michigan State College.

Entered as second class postal matter at East Lansing, Michigan.

Subscription \$1.25 the School Year

Managing Editor: Charles H. Palmer

Associate Editor: James H. Quella

Business Manager: Don M. Montgomery

Circulation Editor: John McCallan

Day Editor: Robert Martin

Sports Editor: Tom O'Brien

Feature Editor: David Gray

Assistant Editor: J. L. Harris

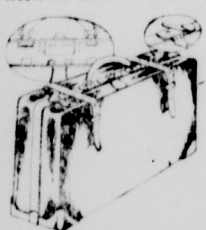
Circulation Manager: L. J. Jansson

Associated Collegiate Press

1934-1935

Member of National College Press

GLADSTONES FOR GRADUATION GIFTS



Appropriate, Practical and Lasting

We are glad to have you look them over. A complete price range.

Liebecmann TRUNK CO.
187 South Washington Ave.

EDITORIALS

Why Not a Rushing Fee for Prospective Pledges?

A definite step toward improving rushing of students by fraternities was taken by the interfraternity council of the University of Michigan with a proposal to assess a fee to all entering students wishing to be rushed at their recent meeting.

The motion which was presented by the financial committee read as follows: "All entering students who wish to be rushed by a general fraternity shall register and pay a 50 cent fee upon arriving in Ann Arbor."

The evident purpose of the measure is to prevent men from eating free meals from several homes under the guise of being interested in the house.

Two other apparent results are evident in the face of the motion. In the first place, those freshmen not wishing to join a fraternity will not pay the 50c and, secondly, this money collected from the others will aid the fraternities themselves.

A newspaper article on the matter states that a larger rushing fee had been considered for some time but the committee later reasoned that such a fee would be impractical and discouraging to freshmen.

A rushing fee has been a very good idea. Too many examples of sponsors attending meals continually from one house to another have shown the need for some protection from it. A rushing fee would very quickly eliminate those who should be eliminated.

It would be interesting to try such a plan here.

ART SPONSORS TO AWARD PREMIUMS

Lansing Theosophical Society Solicits Entries.

A contest for the purpose of encouraging creative work in painting and sculpture, is being held by the Lansing Theosophical Society in conjunction with a series of lectures on the subject of creative art. The talks are being given each week in the society's club rooms by members of the college faculty.

All entries for the contest may be submitted at the offices situated in room 106 of the Holmlund building in Lansing on Thursday and Friday, May 17 and 18, from 2:00 until 4:00 p. m. Cash prizes of \$10, \$5 and \$3 will be awarded the winners of the contest.

Major Oliver Kemp, noted artist, will speak upon the "Creative Power" on Sunday, May 13, at 7:00 o'clock in the evening. The lectures are free to the public.

The honor society is having an open meeting Monday, May 14, at 8 o'clock in room 106 of the home economics building. Miss Edna V. Smith, head of the home economics extension department, will speak on "Extension Work as a Vocation."

East Lansing season of the Grand Rapids Repertory Theatre, Union hall, will open performances beginning at 8:15 Monday, May 14, and Tuesday, "Arms and the Man"; Wednesday, "Ghosts"; Thursday, "The Sign of the Cross"; and Saturday, "There's Always Juliet."

Tennis match this afternoon, M. C. vs. Oberlin college, at 4:10.

By action of the faculty in 1931, it was voted that members of the staff of the rank of assistant professor or higher be required to dress in academic costume and join the procession on Commencement day unless, department heads should grant excuses for good and sufficient reasons. Experiment station and extension workers are included in this requirement. This year all student and staff members are being handled by the Union. Faculty members may rent or purchase appropriate costumes either from the Union, the book store, or Hurd's in East Lansing. Orders must be in by May 15.

The annual Faculty Book club May morning breakfast will be held promptly at 9:30 a. m. on Saturday, May 12, in the main hall of the Union. The chairman of the affair will be Mrs. Gifford Patch and a special feature will be a play staged by Mrs. Elmer of the speech department of the East Lansing high school. Members are urged to make reservations for this breakfast since it is the last social event of the club year.

Baseball game Saturday with Western State at 4 p. m.

East spring football game Saturday at 1:30 in the stadium. The public will be admitted free of charge and the field will be in attendance to play throughout the afternoon.

Compo I H club will meet Friday night, May 11, in Room 402. As well as 7:30 p. m. Important business will be brought up.

In the Yale News a notice read: "Students will officers must keep off the grass. If we are to have any recovery this spring, the roots must have a chance now."

Brushed Wool Sleeveless Sweaters

A new model with take-in straps at sides. White, canary and powder.

\$1.95

Sport Coats

Solid color and bound's tooth checked flannels in the new "sport-swing" model.

\$10.45 and \$11.45

Latest in summer slacks in large variety, \$1.95, \$2.45, \$2.95.

"Piper-tone Shirts"

In black or dark blue—a summer novelty. Piped in white; new shaped cuffs with three buttons. They're hot!

\$1.65

Solid color ties in white and pastel shades, 65c and \$1.

MAY BROS.

"The Hat Store of the Town"

235 South Washington Ave.

The Spartan Oracle

By JOE GUELLO

This literary misconception will be a medium of incoherent scraps and various human oddments that an outlet for publicity inevitably observes or encounters. Forgive it—just once more.

Little Sidelines of Life

State's own conception of little Henry stomping with marshall pompousness while spontaneously passing in review at the parades, the sojor boys stand haughtily at attention—Captain Blanton trying to induce the lad to a less conspicuous locality.

Palmer flashing a Scot instinct as he brings his own peanuts to the ball game. "Ya get a pound for a dime downtown," the editor rationalizes.

The big 210 pound Notre Dame pitcher blazing the ball in to Steve Glaza, diminutive State second sacker who forthwith dispatches the pellet to the outer regions of field for a hit.

River Morse showing true to his moniker as he drives the sphere to the "banks of green."

Bob Martin and Helen Wilson continuously coking it together.

What happened to Gary Morgan?

Harry Wiener, Bachman prodigy and sports reporter, associating with Ginny Grant, the two have decided to limit their dates to seven a week.

The Damon and Pythias playboys of Wells Hall, Ed Lothamer and Pete Weiner.

Jim McCarty enthusiastically expounding his philosophy of life in Wells Hall.

Reverend Lachmeyer, discordantly braying in a raucous falsetto as his pieties gently caress the tones on the Wells Hall piano.

WAS HIS EQUESTRIAN ROSEATE?

It was in Hunt's Food Shop where John Yale, Theta Alpha Phi prodigy, caught a glimpse of a more intimate female acquaintance sitting with another man. John, who is a fairly lacquered sort when able to limit his enthusiasm for the aesthetic to only a semi-comic degree, waited up to the table in a sociable enough manner, and tried to start a conversation.

As if all strained conversations with strange people the topic turned to the inevitable discussion of courses, school, etc.

"How do you like school?" politely asked the young lady's escort seated at the table.

"Quite well," replied Johns laconically, but perhaps inaccurately.

"What are you majoring in?" asked the escort, sparring for another opening.

"Dramatics and art," said the diffident one—and just to keep the ball rolling, boomeranged, "What are you majoring in?"

And Professor A. V. Clark of chemistry department chuckled in reply while Johns' physiognomy flushed after a few enlightening words of explanation.

Wastepaper Medley

Jeanie Smith informs that she is doing steady. Hey, stay away from that phone!

Betty Jerome, Alpha Phi bright, thought baseball games were divided into quarters before being consolidated at the Notre Dame game.

And didn't state give the boys from South Bend the "Berg"?

The plot thickens—it reaches the climax—it is at the crossroad—Joe Foster is coming to Lansing this weekend from Ann Arbor and Marion Bates is on the spot.

Things as would like to witness. An argument between Dean Conrad and Fred Patten and L. P. Waldo.

If the Kappas don't stop pledging gals they will soon rival the Eastern Stars in number.

Blue Key gets a break on decorations and you will hardly recognize the Union tonight.

Colin Anderson has Ed Kemp's scabbard and Blade pin for those social hour that follows those things.

Suggestion: Meehan the amocher for Minnie the Mocher—by Pip whipsy O'Brien.

The latest additions to "sweetheart" on parades: Perry Conant and Julie Redmond, Mike Wilson and Lorna Rae Barrett, and Ginny Letts and Carlton Spencer.

Schellus the cynic was honored at the recent taping of the Schmoeders. His name was brought up for consideration and passed unannounced.

Whisperings have it that Grace Smith is giving our feature editor the run-around.

Bank Johnson, demon quarter, tells the Herman brethren that he is going to the library to study—but the lads think there are other reasons for his sudden lust for the tree of knowledge.

Dick O'Neil, newly elected editor of the Wolverine curran as he read about the Beta Gamma's going A. O. P. It means more simoleons for a new printing block emblem.

The fens of Alpha Chi seem to be fascinated by the boys of the Kappa. Six of them possess scabbard and Blade pins. The benefit

HABER ADDRESSES LIBRARIANS HERE

(Continued from page 1)

to do is not to provide food, clothing and shelter, but to have a program whereby these people can rehabilitate themselves, and that is much easier said than done. After this, the relief for all people on the land will be in the form of cattle, chickens, etc. instead of CWA work on roads and schoolhouses, which takes the farmers away from their real jobs. So after all, the most important thing is to let the people rehabilitate themselves instead of giving them such definite relief.

Professor Haber's speech was only one of several given before the library association. Previous to this speech, Mayor L. L. Fridmold gave a short welcome to the city in which he told of some of the opportunities that are available in East Lansing such as libraries and other things.

Have Big Program

The program of talks was rather badly scrambled but some of the speeches that were given on Thursday were as follows: "An Estimate of Standards for a College Library," J. E. Towne, chairman, "Perfecting a Recall System," Miss Elsie Andrews, Michigan State Normal college, "Facing the Book Situation in the Public Library," Mrs. E. Jennie McNeal, public school library, Lansing, "Jean Nicolet Lands at Sault Ste Marie," which was taken from quite an extensive bibliography by Prof. F. B. Lyon of the history department, and "M. Impressions of Soviet Russia as glimpsed Last Summer," by Prof. E. B. Hill of the farm management department.

Displays were put on in the Union by Wagonvord & Co. book binders, Lansing and the Library Bureau division of Remington-Rand, Lansing.

THE LATEST in EASTMAN KODAKS at

REX CAMERA SHOP

123 East Grand River Ave.

East Lansing

Open Evenings Until 8

SUMMER EMPLOYMENT SOLVED

Student representatives to distribute educational literature. Three months steady work local or traveling. Liberal compensation. Address College Dept. 1019 Arch St. Philadelphia.

WEAR A BOUTONNIERE FOR MOTHER'S DAY

Open Sunday from 8 to 12 for your convenience

COLLEGIATE FLOWER SHOP

211 Abbot Road We Telegraph Flowers Anywhere Phone 3702

Even glass insulators behave badly toward telephone currents when humidity is high. This has been proved by experiments at Bell Telephone Laboratories.

When it's humid, a film of moisture forms on the glass. The more humid, the thicker the film—and the more electrical current escapes! Important factors governing amount of leakage are the chemical nature of the glass, its shape and age, the amount and kind of dirt on its surface.

Through exhaustive studies, telephone men have developed more efficient types of glass insulators—and are seeking ways to make them still better. Close attention to every detail of Bell System equipment leads to constantly improving service.

BELL TELEPHONE SYSTEM

WHY NOT TELEPHONE HOME ONCE EACH WEEK? REVERSE THE CHARGES IF YOUR POLES AGREE.

State Theatre Previews

"A MODERN HERO"

State Theatre—Friday and Saturday. Starring—Richard Barthelmess, Jean Muir, Marjorie Rambeau.

In this new picture Barthelmess depicts a man striving for power, and ruthless in his methods. He is a rider in his mother's tent show, but inherits a desire for power from his father, one of the great financial geniuses of Europe. He makes use of his handsome looks to gain his own interests, and the story ends in a dramatic crash.

"MANHATTAN MELODRAMA"

State Theatre—Sunday, Monday, Tuesday. Starring—Clark Gable, William Powell, Myrna Loy.

The setting for this picture is an elaborate gambling den in New York, equipped with all manner of trick apparatus for evading the law. Gable and Powell are a gambler and the other a district attorney, but both friends since childhood and are in love with the same girl and both fight to win her in his own way. Much of the equipment used has attracted much attention because of its scientific nature.

by Prof. F. B. Lyon of the history department, and "M. Impressions of Soviet Russia as glimpsed Last Summer," by Prof. E. B. Hill of the farm management department.

Displays were put on in the Union by Wagonvord & Co. book binders, Lansing and the Library Bureau division of Remington-Rand, Lansing.

THE LATEST in EASTMAN KODAKS at

REX CAMERA SHOP

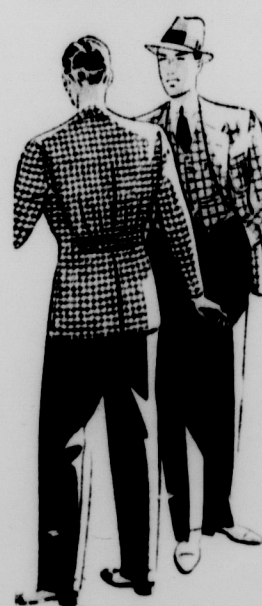
123 East Grand River Ave.

East Lansing

Open Evenings Until 8

Gala Sports Apparel Event

In Time For Decoration Day



A Feature Value SPORT-SWING SUITS

By Hart Schaffner & Marx

\$29.50

Made of rich Harris tweeds, smart Shetlands, in grey and tan. They're comfortable, smart looking and a favorite style with young men.

Gabardine Blade-Swing Suits, tan, brown

\$35

Windowpane and Checked Blade-Swing Suits

\$23.50 \$27.50

New Basket Weave Sport Coats

\$12.50

A new weave that replaces the old twill fabrics. Double breasted and sport swing models; rich shades of tan, brown and blue.

Harris tweed sport coats, grey, brown, \$15

Flann-O-Twill pre-shrunk Golf Slacks

\$2.45

White, grey and tan Flannel Slacks

\$4.95

New mesh weave Shirts, white, blue and tan

\$1.95

Brushed Wool Sleeveless Sweaters Special at

\$1.65

Bright Colored Seersucker and Terry Beach Robes

\$2.95 to \$6.95

Zipper mesh golf shirts \$1.00
Terry slipover shirts \$1.00
Linen golf caps 50c to \$1.00
Hickok sport belts 50c to \$1.00

SMALL'S
211 South Washington Avenue

East Lansing Season

The Grand Rapids Repertory Theatre

First Week

Mon. & Tues.

Arms and the Man

—Shaw

Wed.

Ghosts

—Ibsen

Thurs. & Sat.

There's Always Juliet

—VanDruten

Second Week

(Tentative)

May 28—June 2

Elizabeth the Queen

The Vinegar Tree

Biography, or

Autumn Circus

Special Features

• Reserved section for first 200 season tickets sold. All others general admission.

• PRICES: The single admission, \$2.00 for three admissions, \$5.00 during week.

STUDENTS ONLY: 50c single admission, \$1.25 for three admissions.

• Improved conditions in the Union hall room will include a high stage and staggered arrangement of seats.

• Late permission until eleven o'clock for women.

• Student Art Exhibit in the lobby.

• All performances beginning at 8:15.

Opening Monday 8:15

MISS AMY LOOMIS

Union Building, East Lansing

(a) I would be interested in hearing more about the season.

(b) Please reserve season tickets for the first week (three admissions) in my name. I enclose \$_____ at the above rates.

NAME _____

ADDRESS _____

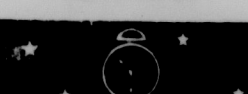
Fill this out or call Union Desk



MORNING



NOON



OR NIGHT

For breakfast, Kellogg's Corn Flakes set you up for the day. Those crisp delicious flakes, with milk or cream, or fruit added, supply the energy you need and are easy to digest.

For a quick, satisfying lunch, eat a bowlful of Kellogg's Corn Flakes. So much better than hot, heavy dishes that often slow you up in afternoon classes.

Then if you're hungry at bedtime, Kellogg's Corn Flakes are just the thing. Ask your club or fraternity steward to keep them on hand or get them at your campus restaurant.

Kellogg's CORN FLAKES

OVEN FRESH FLAVOR PERFECT

At all grocers

and drug stores

or by mail

from Kellogg Co.

East Lansing, Mich.

or by mail

from Kellogg Co.

East Lansing, Mich.

or by mail

from Kellogg Co.

East Lansing, Mich.

or by mail

from Kellogg Co.

East Lansing, Mich.

or by mail

from Kellogg Co.

East Lansing, Mich.

or by mail

from Kellogg Co.

Formal Pledging to Be Feature Of Annual Blue Key Spring Party Held in Union Ballroom Tonight

Featuring only the Blue Key party in the Union ballroom Friday night, the social week-end of May 11 will be rather thin one for State society goers.

Johnny Raber's orchestra will furnish the music for the party tonight, which is being sponsored by the honorary service fraternity as its regular term function. Admission will be 35c per person and the affair will include the formal pledging of thirty new sophomore members who are taking initiation next week.

Seniors, who are invited to all society spring dances held during their final term here, will have only a few hops to make tonight and tomorrow with only six fraternity functions scheduled.

J. A. Clark, Bronson Scruby's orchestra will play for dancing.

Sigma Nu Open House

Bill Walker's orchestra will play at the Sigma Nu open house Saturday night. Prof. and Mrs. E. A. Gee will be the patrons for the party.

Kappa Kappa Gamma Installs Officers

Kappa Kappa Gamma held installation of officers Monday. May 7. New officers are: Marguerite Paine, president; Lorraine Salot, house president; Kay Roberts, recording secretary; Beatrice Deegen, kolbe; corresponding secretary; Claudia Ireland, assistant corresponding secretary; Patricia Ronan, registrar.

Kappa Kappa Gamma held pledging Thursday evening for Betty Fraker, 37, Saginaw; Margaret Bryant, 36, Battle Creek; and Louise Lentz, 37, Nashville.

Kappa Delta Holds Spring Term

Ray Vickerstaff and his orchestra will furnish the music for the Kappa Delta spring term party Saturday evening, May 12, at the chapter house. Dr. and Mrs. F. W. Chamberlain will be patrons for the affair. Guests include Miss Irene Shabin and Prof. E. B. Hill. A dinner in honor of Mothers' day will be held Sunday at the Kappa Delta house.

Zeta Tau Alpha Spring Term Party

Prof. and Mrs. C. H. Nickle and Prof. and Mrs. Edward C. Prophet will be patrons for the Zeta Tau Alpha spring term party to be held at the Masonic temple in East Lansing Saturday, May 12. Bronson Scruby's orchestra will play.

Alpha Gamma Delta Dinner Guests

Mr. and Mrs. Robert Harvey and daughters were dinner guests at

the Alpha Gamma Delta house Tuesday evening. Prof. and Mrs. J. D. Menchhofer and Mrs. W. E. Bumay were dinner guests Wednesday evening.

Alpha Phi Mothers' Day Luncheon

Alpha Phi sorority will give a luncheon in honor of the mothers Saturday noon, May 12. Guests will be Dorothy Jane Dewees, and mother, Mrs. Alfred Dewees, of Detroit; and Jane Fowler and mother, Mrs. R. C. Fowler, of Detroit. The hope chest to be raffled off at a tea June 9 will be displayed Saturday.

Chi Omega Will Hold Initiation

Chi Omega will hold initiation Monday, May 14. Initiates are: Mary Ballard, 37, East Lansing; Jean Ballard, 37, East Lansing; Shirley Ellis, 37, Lansing; Martha Fisher, 37, East Lansing; Lucille Haskins, 36, Trenton; and Grace

Johnson, 37, Grand Haven. Chi Omega announces the pledging of Dorothy Grull, 37, Lansing.

A Mothers' day tea will be given at the Chi Omega house Saturday, May 12, from 3 to 5. Guests include Mrs. H. H. Halladay, Mrs. C. P. Halligan, Mrs. A. J. Clark, Mrs. LeRoy, Mrs. Grimm and Mrs. Benner.

Guest at Kappa Alpha Theta

Jean MacLachlan of Sault Ste. Marie was a guest at the Kappa Alpha Theta house Tuesday, May 8.

Sigma Kappa Mothers' Banquet

A Mothers and Daughters banquet will be held at the Sigma Kappa house Friday evening, May 11. The following program will be given: Piano solo, Margaret Fox; reading, Carolyn Murdock; flute solo, Betty Gardener. Sigma Kappa seniors entertained

HEARING ON BANK TO BE HELD ON MAY 29

(Continued from page 1.)

ration will be used to make a 40 per cent payment to depositors and creditors.

This sum, together with the 5 per cent already paid will make a total payoff of 45 per cent. Under this plan there will be formed a depositors' corporation which will actually borrow the \$89,000 from the R. F. C. and will in turn loan this to the bank with sufficient collateral put up by the bank to secure the loan. According to the terms of the waiver and agreement, depositors and creditors will accept a payment of 40 per cent at this time and agree to wait until other assets of the bank can be realized on for the balance of the amount due them.

Seventy-five thousand dollars will be the minimum capital of the reorganized bank, which has already been attracted for, with all stockholders making payment of their assessment receiving stock in the reorganized bank. At this time, more than \$80,000 of stock assessment has been arranged for, according to officials of the bank, who state that it is possible that before the opening of the bank some stock may be available from those not able to meet their assessment.

Community Shows Spirit

In discussing the plans of reorganization the bank officials speak freely of the splendid spirit that has been shown by the people of the community during the past year.

West Mary Mayo Guest

The mother of Christine Campbell of Mt. Clemens has been the guest at West Mary Mayo this week.

Y. W. C. A. Expects 200 For Breakfast Saturday

About 200 mothers, daughters, and guests are expected to attend the May Morning Breakfast which will be given by the Y. W. C. A. Saturday morning at 10:15 at the Peoples church.

A delicious three-course breakfast will be followed by a varied program. The main attraction will be the presentation of the pageant, "Father Time." This play is in five episodes, each of which depicts a part of time.

The price of tickets will be 40 cents per plate. Tickets may be purchased or reservations made with Miss Emma Sater, or with any Y. W. C. A. member.

and express the hope that the bank will be able to be of real service to the community again in the near future. More than 90 per cent of the deposits of the bank by classes, it is pointed out, are represented by waivers and agreement forms already signed.

Following the court hearing on May 29 and the issuance of an order by Judge Carr approving the reorganization of the bank it will be necessary that a meeting of stockholders be held at which the directors will be chosen and other matters incident to reorganization taken care of. The obtaining of the money from the R. F. C. will then take place; this, however, already having been arranged for. There will next be an examination of the bank by the Federal Insurance Deposit corporation relative to qualifying for federal deposit insurance, and finally the setting of the time for the opening by the banking commissioner.

Blue Key Party

35^c per person

TONITE
UNION BALLROOM

TICKETS AT
UNION DESK

The clean
Center Leaves are the
mildest leaves
They Taste Better!

Luckies are all-ways
kind to your throat

As you can see from this picture—Luckies' fine, smooth quality doesn't just happen—for we use only the clean center leaves! Only the clean center leaves—for which farmers are paid higher prices—for the center leaves are the mildest leaves—they taste better. Then—"It's toasted"—for throat protection. And every Lucky is fully packed with these choice tobaccos—made round and firm—free from loose ends—that's why Luckies "keep in condition"—do not dry out. Luckies are always in all-ways kind to your throat.

"It's toasted"

✓ Luckies are all-ways kind to your throat



Only the Center Leaves—these are the Mildest Leaves

They Taste Better

Flowers for Mother's Day

We have a beautiful and complete stock of fresh cut flowers and plants with which to fill your Mother's Day order.

ORDER EARLY at the

Collegiate Flower Shop

211 Abbot Road

Phone 3702

WE TELEGRAPH FLOWERS ANYWHERE

BEVERLY says
A CLEARANCE OF
EARLY SPRING

DRESSES

\$2⁹⁹ - \$3⁹⁹ - \$4⁹⁹

COATS - SWAGGERS

TRY OUR
Price 50%
Full Fashioned
Lace Top
\$5⁹⁵ to \$13⁹⁵

HOSE
59c

BEVERLY'S

104 South Washington Ave.

Where "The Thrifty College Miss Shops and Saves"

THE DELLS

PALMER PARK **EDDIE CONTI** **LAKE LANSING**

And His Orchestra

Featuring TINY HARRIS

ADMISSION 35c Playing Nightly (except Monday) SOCIAL PLAN

EVERY TUESDAY - PAL NITE

Treat Your Mother To The Best

Place your order today for a two- or three-layer cake, to be given to her on Mother's day

A great variety of the finest of goods served in our Cateria

The Hunt Food Shop

133 E. Grand River Ave., East Lansing
Operating 100 per cent NRA

WEDNESDAY AND THURSDAY

JOHN
Barrymore
20th CENTURY
with CAROLE