

'BEAT MICHIGAN' ISSUE

Michigan State News

COMBINED WITH THE EAST LANSING PRESS

Turn

VOL. 337,330

MICHIGAN STATE COLLEGE, EAST LANSING, MICHIGAN, FRIDAY, SEPTEMBER 26, 1941

FIVE CENTS PER COPY

NO. 1

These Huskies And Their Teammates Seek To Break Jinx

Last Win Was 4 Years Ago

Not since 1937 has a Michigan State eleven exulted in the glory of a victory over its neighbor, University of Michigan. And not a member of the present squad, seniors included, can say that he ever played in a contest against Michigan that was won by the Spartans.

That's why tomorrow's annual intra-state classic at Ann Arbor is going to pack an extra punch for 18 seniors who will be getting their last crack at the famed Wolverine team.

The last time that Michigan State defeated the Wolverines was in 1937 when All-American Johnny Pingel paced the Spartans to a 19-14 victory. This was the last in a series of four straight triumphs for Michigan State.

Odds About Even As Squad Prepares For Annual Grid Classic

Fans to Jam Ann Arbor for Tussle

By Ed Kitchen

For the first time in three years the odds were counted even today as Michigan State and University of Michigan made ready to enter the state's mightiest annual football classic Saturday afternoon in University stadium at Ann Arbor.

With the 36th annual renewal of the traditional rivalry listed as the top gridiron attraction in the nation, all eyes at this early point of the season were fixed to the tactical problem of whether State, the team which has been humbled for three successive years on the Wolverine greenward, can rise up to defeat the over-riding favorite, the 1941 Michigan team.

State's coaches and municipal authorities near Ann Arbor were preparing to handle the greatest influx of football-mad fans that will be seen in the district since the midwest this fall. Harry Tiltonson at 10 a. m. today. Primodig in East Lansing reported solid-out signs with the crowd set at their respective headquarters long before game time. The possibilities were that the crowd might near the record mark of 22,000 set in 1938. Last year 85,400 jammed the stadium to see Michigan win, 21 to 14.

BETTING FAVORER THAN USUAL THIS YEAR

Not since the west coast, 14-0 in 1938 after having won for the four previous years, has a game between the two schools been figured so closely. Six when Michigan has entered the battle as the favorite twice, and ended up on top on both occasions. Now the point that Coach Charles Beelman and his crew are anxious to prove is that Harmon's Michigan is a harmless Michigan.

Regardless of who's back and who isn't back, however, the pre-game sentiment was a far cry from last year which saw odds go as high as 5-1 in favor of the Wolverines and bettors giving 12-point odds to the Michigan gridgers. In Detroit and Ann Arbor the largest edge quoted in any quarter for an "M" victory was 7-5, and that mainly on the strength of the Wolverines' last season.

Because of the early date of this year's game much of the color was to be missing from the battle. Neither Michigan State's 110-piece military band or Michigan's famed musical aggregation will appear at the game because the engagement has been scheduled two days before school even starts at either institution. No formal pep meetings or rallies were to be held here or in Ann Arbor but numerous unofficial "Beat Michigan" and "Defeat State" gatherings will be staged.

MANY STUDENTS WILL GO ON SPECIAL TRAIN

State, which has won only six games and tied three contests of the 33 previous meetings, was to entrain for the 65-mile jaunt to Ann Arbor at 10 a. m. Saturday morning on the special 10-car train. Immediately after arriving the Spartans will go to the stadium for a short workout before game time. Approximately 1,200 students from East Lansing will accompany the team on the special train.

That mythical godfather of all athletic events, the weatherman, promised a fair and cool day for the playing of the game. State's punters, meanwhile, cast a wary eye on the heavy wind that swept East Lansing Thursday evening. Last year, fans at the grid classic sweated in shirt sleeves throughout a long afternoon.

Few of the expert at this point were ready to concede that the game would be a match of Michigan's ground attack against State's passing offense. About the best way to figure the course of the game is that both teams will be ready to test out the next weapons at their disposal and will cash in on the one that meets with the most success.

WESTFALL AND DAVIS SHOULD SEE ACTION

In the matter of individuals, however, the two most familiar weapons which will be pressed into goliard service are the power technique of Bob Westfall, Michigan's captain and fullback, and the accurate passing arm of Wyman Daise Davis, senior left halfback from Dundee. Davis has been troubled with charley-horses this week but will undoubtedly be ready to start. Alternates at the left halfback post are Walter Patkowski, 5-foot 8-inch speed merchant who scored both of State's touchdowns on pass receptions last year, and Dick Kieppe.

See FOOTBALL—Page 3

Who's Gonna Win? They Know

Students Give Red Hot Opinions on Tomorrow's Game

By ELLIS BRANDT

State students as a whole think Michigan State will beat the socks off Michigan tomorrow, and the reasons they give are varied and conclusive.

"Harmon's gone" is the most common reason students have for being Spartan rooters. "No Harmon, no Evanshewski, no backfield, no Harmon, no confidence, no Harmon," runs their line of reasoning.

State students are placing heavy bets on the game, too, mainly with disagreeing roommates or friends. Behind these bets, however, are few masterful opinions. Experts meanwhile placed betting odds at 7 to 5 for Michigan.

Pat Kulling, Detroit senior, thinks Michigan State will win "because it has a better team and better spirit" while Jim Sagar, Dearborn sophomore, figures that Michigan State is a natural. "If State doesn't win it'll cost me a case of the pale, amber brew," he reports.

A different reason is given by



WILLIAM RUPP

Colonel Bill from Louisville is his official title. Rupp is the outstanding guard to play for State since Ed Wagner attained All-American honors. He's a stocky lad weighing 187 and standing 5 feet 8 inches. There's plenty of aggressiveness in the Colonel. A fast and deadly blocker.

LEWIS SYLVE SMILEY

That middle name of Smiley's is strictly a plug for his father's firm (New York Life Insurance Company). Lew has been a steady performer for the Spartans at end. He's exceptionally good on defense and has his days at pass catching. Hails from Fernside, stands two inches over 6 feet and weighs 195.



MICHAEL F. W. SCHELL

Michael Francis William is the official monicker. But just plain Mike has been a whale of a half-back for Michigan State in the last two years. He can run a pass and kick. Mike was an all-around track star at Allegan his home town. During the past summer he had a job where he walked 40 miles a day.

HOWARD POUND

Just call him Howdy and you'll win the friendship of this tall, blond and handsome tackle. Howdy played end last year, but he was made over into a tackle for his senior year. He's playing at the best football of his career at this position. When the Spartans travel to the west coast this year Howdy will visit his sister.



THEODORE SMOLINSKI

"Terrible Teddy" is the hard luck man of the Spartan squad. He entered the Michigan game in the first quarter last year and broke a leg after one minute of play. The towering tackle is counted upon heavily this year. Ted is all of 6 feet, 4 inches and tips the scales at 223 pounds. He's still growing.

GEORGE DANCIC

For three years now George has been trying to tell folks that East-Chicago is in Indiana and not Illinois. East Chicago is where he spent his high school days. Besides playing football he was a guttural bass in the glee club. Dancic is a rough and tumble guard weighing only 172 pounds and standing 5 feet, 10 inches.



ANTHONY C. ARENA

Tony is the regular center this year. One of the hardest tacklers and best defensive players in the outfit. Weighs 191 pounds and is an even 6 feet. His home town is Detroit where he was an all-city star at Northwestern high and a teammate of Bill Kennedy. Outstanding deeds are expected of Tony this year.

ROMAN J. KAMAN

The middle name is Joe. He's just another guy named Joe, but can he hit that line. This full-back is easily the team's hardest line blocker. He was an All-State fullback at Grand Rapids Catholic. Kaman is slated to see plenty of action this year. Built ruggedly, he weighs 199 pounds and stands 5 feet, 10 inches.

CLIFFORD B. PECKEL

"Crash" as his mates call him is the workhorse of the Spartan squad. He's never been a first stringer, but he's a capable man. He played end, but now he's back at fullback. He's been imitating Bob Westfall, the Michigan fullback, in practice sessions and have his teammates been taking it out on him.

ATTENTION, FANS!

The registrar's office and the accounting office will be closed tomorrow morning. It was announced yesterday. Other college offices will be open until 9:30 a. m.

Students who expect to attend the Michigan State-University of Michigan game at Ann Arbor must complete registration and pay fees by 5 p. m. today in order to get their student tickets to admit them to the game. Those who fail to do so may buy tickets at the student booth at Gate 10 of Ferry field, Ann Arbor, according to C. O. Wilkins, college treasurer.

Late registration penalties will be as follows: Monday, \$3; Tuesday, \$4; Wednesday and after, \$5.

Theater to Run Free Movie Three Times

The State theater's policy of a free show for all college students will be extended this year to include two evening performances and a matinee run, Vern Sciotte, manager, announced yesterday. In past years the theater has opened its doors to students for one evening show only, but in order to allow all students to see the picture as guests of the management, Sciotte said, three runs will be shown. Date of the free show, tentatively scheduled for the end of the football season, will be announced later.

New Students Number 2,079; More Coming

Regular freshman registration closed at noon yesterday showing a drop from last year of only 114 crease expected by administration officials.

A total of 2,079 first-year students completed their registration before the deadline. Registrar R. S. Linton reported yesterday afternoon, as compared with last year's total of 2,193. Late registrations during the first half of next week are expected to swell this number close to the 1940 mark.

Linton declared that he was "well pleased" with the first statistics, adding that previous estimates based on the number of applications received had been greatly exceeded. No estimates on the number of upperclassmen returning this fall were available yesterday, but the registrar expected a slight decrease.

Of the total of 2,079 registrations, including both freshmen and transfer students, 1,279 are men and 790 women. Last year 1,371 men and 822 women made up the last-year total.

Originally, estimated, average drop in enrollment for colleges and universities throughout the country was set at 15 per cent. Michigan State's first enrollment returns were well below this figure.

Regular registration of upperclassmen, which began yesterday morning, will be completed this afternoon at 5 p. m. As in other years, a number of late registrations are expected next week.

Ensign Advises Future Cadets

College men of draft age who may be planning on training for Ensigns commissions in the Naval Reserve were reminded this week by Ensign D. C. Hayward, liaison officer stationed at Lansing, to include 18½ necessary required courses in their schedules.

Applicants for the Navy's Midshipmen training program, Hayward stated, must be physically fit, between 20 and 28 years old, and must have B. S., A. B. or Engineering degrees, including at least two one-semester courses or their equivalent in college mathematics. A course in plane trigonometry must be included in, or taken preparatory to, the college mathematics course.

Opportunities for college students to obtain commissions as Naval aviation cadets were also pointed out by Hayward.

Time Table

What—When—Where

TODAY—State News staff, 4 p. m. State News office
MONDAY—Wolverine staff, 5 p. m. Wolverine office

ROBERT M. FRIEDLUND

Everyone calls him "Ace." And "Ace" he is when it comes to ching passes. He's the best end on the squad, and pretty good defensive player. Bob weighs 196 pounds and sprouts to 6 feet, 1 inch. He's also an outstanding piano player and composer. You can find him by the "butch" haircut.

WILLIAM J. KENNEDY

"Wild Willyum" is a guard this year. He's now playing his position in three years for Spartans. As a backfield they don't come any harder. But Bill likes his new job. He's from Detroit, weighs pounds and stands 6 feet. One of the hardest workers on the team.

FRANK KARAS

Frank comes from 'way up in Escanaba. This is his third year as a regular in the Spartan forward wall. He's one of the most consistent members of the team. Frank towers to 6 feet, 2 inches and weighs 202. Quiet type of person with bunched black hair. Dependable is his middle name.

FRED L. CARTER

This 203-pound tackle who stands 6 feet tall wants to be a mortician. It's the trade of his father and mother in Elsie, his home town. Last year was Fred's first as a starting tackle. But he's been a regular since then. Nothing much bothers Fred. Only that no place to run over his position.

WYMAN D. DAVIS

To avoid confusion between the twins, Wy is the passing left half-back. He's been State's principal backfield threat for the last two years. Also the team's leading scorer. Wy stands 6 feet even and weighs 178. He's also a member of the baseball squad, playing outfield and good outfield.

WILFORD D. DAVIS

Just ask for "Willie" and you'll have the other half of the famous Dundee-bred Davis twins. "Willie" is an all-A chemistry student who is the No. 1 quarterback for the Spartans. He's a two letter winner like his brother. Just a mile under 6 feet and weighs 172. Also a star pitcher and outfielder on the State nine.

Campus Cutups

People Have More Fun Than Anybody

Home, Sherlock

Times the millennium, and the very of the missing J-Hop prop of last year reaches a happy conclusion.

During long, sleepless nights they should have been studying or seeing "Dr. Kildare Pulls a Bone" at the Orpheum, curious students mulled over the question of what happened to all the profits from the J-Hop, or if there were any, or if, and so forth. Then other day, hidden deep down the proceedings of the August meeting of the State Board of Agriculture, appeared the item: Junior class of the college lent the board with \$749.48 from the 1941 J-Hop, to be for student loan funds.

Liberal Education

The indication of the manner in which members of the State business staff spend their spare time was given this week with the discovery of a couple of detective magazines in the process of cleaning out the dining house-cleaning, of "Spicy Adventure" and "Detective" were found in the pockets of a low drawer. Members can't blame it on the sellers of yesterday, either. Both magazines were dated Oct. 1, 1941.

Money Ball

Gertrude Jackson, Ishpeming freshman, goes the honor of the costliest boner on record so far this year. Seems that Gertrude is a football fan, and didn't want to miss any of the home games this year. Unaware that all such games were included in the student activity book, she has to procure a season ticket, to tune of seven dollars, plus a chance to see the Michigan "Saturday." Then, someone the news, she was even more disgusted. Gertrude was her roommate. Miss Jackson had talked buying a season ticket, too.



ROBERT SHERMAN

Blond Bob is a local boy. He played at Lansing Eastern three years under Walter Graft. Has been rated as Michigan State's first or second string quarterback since he was a sophomore. Bob can always be called upon to do a little kicking or passing, too. Probably the team's best place kicker.

WALTER S. KUTCHINS

This is Walt's third year on the squad. He's a brother of Hank, a former Spartan end. Hails from Hamtramck High. Used to play end, but Coach Bachman shifted him to guard. "Kutch" is a handsome lad weighing 185 pounds and standing 5 feet, 11 inches. Has never been a regular.

ROBERT MCNEIL

Bobby, the boy from the Fur West, is Michigan State's long distance man. The lanky and comes all the way from Phoenix, Ariz. He's right up there among the regulars this year. Displayed a fine defensive talent during the latter half of 1940 season. Weighs 188 and goes all the way to 6 feet, 2 inches.

Staff Sells 700 Wolverines In Opening Drive

Pushed by a crew of 100 salesgirls, the opening sales drive of the 1942 Wolverine college annual, hit the 369-mark yesterday afternoon. Business Manager Betty Crum reported.

Subscriptions at the initial price will continue until December 6. Miss Crum stated, with a price boost going into effect at that time. The campus-wide sales drive was opened Wednesday noon.

As an added service this year, free shopping guide is being distributed.

Students interested in photography for the State News, Spartan, or Wolverine will be interviewed in the Wolverine office, room 1 of the Union annex, Monday, Tuesday, and Wednesday from 4 to 6 p. m.

Contributed to freshmen by the Wolverine staff. The guide, reprinted from the advertising section of last year's yearbook, is intended to acquaint new students with East Lansing and its merchants.

Buttons stamped with "I Am a Spartan" are being used to identify those who have ordered their Wolverines, each subscriber receiving his when he places his order.

Work on the production of this year's book is well underway, according to Larry Hardy, editor.

Mixer, Dance Will Top Week Of Hectic Freshman Activity

Social highlights climaxing Michigan State's annual Freshman Week will be the freshman mixer tonight, the all-college dance tomorrow night, and a varied program of church and sorority activities Sunday.

The freshman mixer, sponsored each year by Y. W. C. A.,

Former Professor Has Lehigh Post

BETHLEHEM, Pa., Sept. 24—

Dr. Duncan Stewart, Jr., former instructor and assistant professor of geology at Michigan State college, has been appointed to a similar position at Lehigh university. It was announced by Pres. C. C. Williams.

Under the Wire

WASHINGTON, D. C., Sept. 25—Debate on repeal of the Neutral-ity act was moved to the Senate chamber today, and it was expected that the U. S. would soon be enabled to arm merchant ships recently requested of Congress by President Roosevelt.

Sept. 25—Bombs were falling in Rome tonight, and the radio station was off the air. Rumors of unrest among the people were reported in several European newspapers.

Sept. 25—U. S. Senator Robinson took a turn for the worse at Frontier Hospital, steadily to the U. S. was secured by army units of being "detained" by President Roosevelt.

See DANCE—Page 1

Michigan State News

Entered as second-class matter at the postoffice, East Lansing, Mich. Office located on ground floor of east wing of Union Building, room 5. Published Tuesday, Thursday and Saturday mornings during the college year by the students of Michigan State College. Telephone—College Phone 8-9118; Editorials 9-8144; Est. 249; Business Office—Ext. 248.

1940 Member 1941
Associated Collegiate Press
 REPRESENTED FOR NATIONAL ADVERTISING BY
National Advertising Service, Inc.
 College Publishers Representative
 430 Madison Ave., New York, N. Y.
 CINCINNATI • BOSTON • LOS ANGELES • SAN FRANCISCO

EDITORIAL STAFF
ASSOCIATE EDITORS: Sheldon Moyes, Len Barnes, Dave Jones
SPORTS EDITOR: Bob Astley
WOMEN'S EDITOR: Charlotte Whitten
FEATURE EDITOR: Ken Kuhn

BUSINESS STAFF
ASSISTANT BUSINESS MANAGERS: Stan Arthurs, Art Underwood
CIRCULATION MANAGER: Doug Reeve
AD SALESMEN: Les Taitelbaum, Bob Edzell, Paul Walker
CLASSIFIED: Jane Winkels

They're Your Ideas

Watch this column throughout the year. Read it for interpretation of national and local affairs, from a student standpoint.

There will be times when free advice is given, times when the column will back or oppose certain campaigns and ideas both on and off campus. You may or may not agree.

But whatever the type may say, the column will uphold and interpret events in the light of student opinions and understandings. It will try to reflect the majority of student body opinions at all times.

The classes of 1945, '44, '43, '42—all are the State News. Those of you who work on the paper are representatives of the student body.

Remember, too, that the paper is run as close to professional journalistic and commercial standards as circumstances will permit.

If your interest lies in this field, drop in and find yourself a job among a group of students who have a common interest. If time or other interests will not permit it, drop in to get acquainted at least, and then keep up that friendship by regularly reading this column to see if it is doing a good job of reflecting your opinion.

You're Still A 50-50 Chance

Oldtimers and maybe some freshmen probably have noticed the nice new yellow lines gracing East Lansing streets. There are a few out on Grand River avenue.

The idea is that cars are supposed to stop so that pedestrians can cross at those points. It would be a good idea if students would make a strenuous effort to forget that geometry stuff about "a straight line is the shortest distance," etc., and try to cross at the crosswalks.

The ones in the middle of the block aren't marked.

So if you yearn to get bopped by a bumper, cross there, stepping from between parked cars.

Those are the points where plenty of police regulation is needed. There should be five or six-foot no-parking strips painted off to allow crossing without climbing over fenders.

But probably the police force will be busy hiking out to Mason hall to enforce the unneeded one-hour parking limit from Charles street out.

If You Ask Me

This Time The Administration Has Gone Too Far

By Tom Greene

WELL, THEY DID IT. While we were all away for the summer it seems that The Powers That Be stole a march on us. Stole a couple of marches to be exact.

Innocently, naively, all the upperclassmen come tripping back to Michigan State's beautiful campus sprawled beside the Winding Cedar. They expected all to be as it had been in the happy days of yesterday. But no! It was not to be.

THEY TAMPERED—They tampered with our most sacred institutions. They messed up Freshman Week. The sacred tradition of the Freshman Mixer has been made but a hollow mockery.

To get to the point, **THEY** have made the latter end of the mixer open to all classes. The idea! For naught goes all the work, thought and love spent in past years in dreaming up ways to crash the mixer.

NO MORE WILL the cries of "But I've just got to see my little sister for a minute," and "Honestly, I'm a freshman, I just got in from Kankakee and lost my pot," echo about the door. It will all be legal, pragmatic, horrible.

Of course it will give the freshmen a chance to meet all the upperclassmen instead of just the 24-carat he and she-wolves, but that's beside the point.

THERE ISN'T MUCH room for talent any more. You don't need to try to pass yourself off as a freshman. In fact, I even got a laundry-bag from Hurd's without a struggle.

BUT THE REAL tragedy of this school year is the little fence around the nursery next to the Union annex. All the fascinating slides and swings are barred from exercise-craving Spartans by cold steel.

To say nothing of the Home Ec girls in there.

THE ENCIRCLEMENT SYSTEM does have one thing to be said for it, however. It should help keep the little ones from being squashed in the mad dash for classes after sitting in the Union Grill until 10 after the hour.

Some of the tiny tykes—future football greats, doubtless—got quite proficient last year in bobbing and weaving and working their way among the hurrying hooves.

THEIR LITTLE PERSONALITIES probably will never flower as brightly as those who in future years can tell their children:

"I slid down the same slide as Sammy Yeiter," or "Rog Ketcham and I teeter-tottered one day years ago."

That happy hobnobbing with the RMOC's, BWOC's and general raffia will not be for the homogenized kiddies of 1941-42.

YES, LIFE IS REAL. Life is earnest—and classes start Monday at 8.

News Roundup

By George Herbert

Professors Urging War As Nazis Reach Leningrad

"The time has come for the United States to join Great Britain and her allies in their war against Germany," declared a group of faculty members from Wayne university and the University of Michigan yesterday, as they announced plans to petition President Roosevelt to ask for an immediate declaration of war against the Axis.

Led by Professor Preston Sloan, of the history department of the University of Michigan, "several scores" of the University's faculty members have signed the petition. A similar petition has been signed by 50 of 60 faculty members at Wayne. Many members of the group were signers of a petition several months ago asking for passage of the Lend-Lease bill.

Nazi Reach Leningrad

Nazi motorized divisions reached the suburbs of Leningrad, Russia's second city, yesterday, claimed DNB, official German news agency. According to Russian resistance, DNB deceived the fighting as "hand to hand street" to street, and house to house.

In retaliation, the Soviet high command claimed that the "suburbs" were in reality a small port.

IN BRIEF

Wayne and University of Michigan professors demand war.

Nazis claim occupation of Leningrad suburbs.

British may send troops to southern Russian front.

Senators plan repeal of Neutrality act.

On the Gulf of Finland, 20 miles west of Leningrad.

On the southern front, however, the Germans continued to hold unquestioned control of the Ukraine battle-line. German units, pushing eastward from fallen Kiev are swinging around the Black Sea toward the Caucasus.

British May Move—Spurred by reports that Gen. Sir Archibald Wavell, commander of the British Indian Army, is attending secret conferences in London, English news agencies yesterday hinted of possible plans to move Empire forces up through occupied Iran into southern Russia to defend the Caucasus region.

Such a move would constitute the first use of British land troops on the Russian front.

Repeat Neutrality?—Senate Administration leaders forecast an early repeal of the Neutrality Act, as support grows for a plan to arm the American Merchant Marine.

Senator Tom Connally, Texas Democrat and chairman of the Senate Foreign Relations Committee, is "prepared to sponsor an amendment authorizing the arming of our merchant ships" and predicts that the amendment will receive Congressional approval.

Approximately 125 American-owned ships are already sailing in the war zones under Panamanian registry.

CLASSIFIED ADS

HELP WANTED

COLLEGE STUDENT To work part time in new station. Salary and commission. Ave. K. Ave. N. Ave. S. Ave. W. Ave. X. Ave. Y. Ave. Z. Ave. AA. Ave. AB. Ave. AC. Ave. AD. Ave. AE. Ave. AF. Ave. AG. Ave. AH. Ave. AI. Ave. AJ. Ave. AK. Ave. AL. Ave. AM. Ave. AN. Ave. AO. Ave. AP. Ave. AQ. Ave. AR. Ave. AS. Ave. AT. Ave. AU. Ave. AV. Ave. AW. Ave. AX. Ave. AY. Ave. AZ. Ave. BA. Ave. BB. Ave. BC. Ave. BD. Ave. BE. Ave. BF. Ave. BG. Ave. BH. Ave. BI. Ave. BJ. Ave. BK. Ave. BL. Ave. BM. Ave. BN. Ave. BO. Ave. BP. Ave. BQ. Ave. BR. Ave. BS. Ave. BT. Ave. BU. Ave. BV. Ave. BW. Ave. BX. Ave. BY. Ave. BZ. Ave. CA. Ave. CB. Ave. CC. Ave. CD. Ave. CE. Ave. CF. Ave. CG. Ave. CH. Ave. CI. Ave. CJ. Ave. CK. Ave. CL. Ave. CM. Ave. CN. Ave. CO. Ave. CP. Ave. CQ. Ave. CR. Ave. CS. Ave. CT. Ave. CU. Ave. CV. Ave. CW. Ave. CX. Ave. CY. Ave. CZ. Ave. DA. Ave. DB. Ave. DC. Ave. DD. Ave. DE. Ave. DF. Ave. DG. Ave. DH. Ave. DI. Ave. DJ. Ave. DK. Ave. DL. Ave. DM. Ave. DN. Ave. DO. Ave. DP. Ave. DQ. Ave. DR. Ave. DS. Ave. DT. Ave. DU. Ave. DV. Ave. DW. Ave. DX. Ave. DY. Ave. DZ. Ave. EA. Ave. EB. Ave. EC. Ave. ED. Ave. EE. Ave. EF. Ave. EG. Ave. EH. Ave. EI. Ave. EJ. Ave. EK. Ave. EL. Ave. EM. Ave. EN. Ave. EO. Ave. EP. Ave. EQ. Ave. ER. Ave. ES. Ave. ET. Ave. EU. Ave. EV. Ave. EW. Ave. EX. Ave. EY. Ave. EZ. Ave. FA. Ave. FB. Ave. FC. Ave. FD. Ave. FE. Ave. FF. Ave. FG. Ave. FH. Ave. FI. Ave. FJ. Ave. FK. Ave. FL. Ave. FM. Ave. FN. Ave. FO. Ave. FP. Ave. FQ. Ave. FR. Ave. FS. Ave. FT. Ave. FU. Ave. FV. Ave. FW. Ave. FX. Ave. FY. Ave. FZ. Ave. GA. Ave. GB. Ave. GC. Ave. GD. Ave. GE. Ave. GF. Ave. GG. Ave. GH. Ave. GI. Ave. GJ. Ave. GK. Ave. GL. Ave. GM. Ave. GN. Ave. GO. Ave. GP. Ave. GQ. Ave. GR. Ave. GS. Ave. GT. Ave. GU. Ave. GV. Ave. GW. Ave. GX. Ave. GY. Ave. GZ. Ave. HA. Ave. HB. Ave. HC. Ave. HD. Ave. HE. Ave. HF. Ave. HG. Ave. HH. Ave. HI. Ave. HJ. Ave. HK. Ave. HL. Ave. HM. Ave. HN. Ave. HO. Ave. HP. Ave. HQ. Ave. HR. Ave. HS. Ave. HT. Ave. HU. Ave. HV. Ave. HW. Ave. HX. Ave. HY. Ave. HZ. Ave. IA. Ave. IB. Ave. IC. Ave. ID. Ave. IE. Ave. IF. Ave. IG. Ave. IH. Ave. II. Ave. IJ. Ave. IK. Ave. IL. Ave. IM. Ave. IN. Ave. IO. Ave. IP. Ave. IQ. Ave. IR. Ave. IS. Ave. IT. Ave. IU. Ave. IV. Ave. IW. Ave. IX. Ave. IY. Ave. IZ. Ave. JA. Ave. JB. Ave. JC. Ave. JD. Ave. JE. Ave. JF. Ave. JG. Ave. JH. Ave. JI. Ave. JJ. Ave. JK. Ave. JL. Ave. JM. Ave. JN. Ave. JO. Ave. JP. Ave. JQ. Ave. JR. Ave. JS. Ave. JT. Ave. JU. Ave. JV. Ave. JW. Ave. JX. Ave. JY. Ave. JZ. Ave. KA. Ave. KB. Ave. KC. Ave. KD. Ave. KE. Ave. KF. Ave. KG. Ave. KH. Ave. KI. Ave. KJ. Ave. KL. Ave. KM. Ave. KN. Ave. KO. Ave. KP. Ave. KQ. Ave. KR. Ave. KS. Ave. KT. Ave. KU. Ave. KV. Ave. KW. Ave. KX. Ave. KY. Ave. KZ. Ave. LA. Ave. LB. Ave. LC. Ave. LD. Ave. LE. Ave. LF. Ave. LG. Ave. LH. Ave. LI. Ave. LJ. Ave. LK. Ave. LL. Ave. LM. Ave. LN. Ave. LO. Ave. LP. Ave. LQ. Ave. LR. Ave. LS. Ave. LT. Ave. LU. Ave. LV. Ave. LW. Ave. LX. Ave. LY. Ave. LZ. Ave. MA. Ave. MB. Ave. MC. Ave. MD. Ave. ME. Ave. MF. Ave. MG. Ave. MH. Ave. MI. Ave. MJ. Ave. MK. Ave. ML. Ave. MM. Ave. MN. Ave. MO. Ave. MP. Ave. MQ. Ave. MR. Ave. MS. Ave. MT. Ave. MU. Ave. MV. Ave. MW. Ave. MX. Ave. MY. Ave. MZ. Ave. NA. Ave. NB. Ave. NC. Ave. ND. Ave. NE. Ave. NF. Ave. NG. Ave. NH. Ave. NI. Ave. NJ. Ave. NK. Ave. NL. Ave. NM. Ave. NN. Ave. NO. Ave. NP. Ave. NQ. Ave. NR. Ave. NS. Ave. NT. Ave. NU. Ave. NV. Ave. NW. Ave. NX. Ave. NY. Ave. NZ. Ave. OA. Ave. OB. Ave. OC. Ave. OD. Ave. OE. Ave. OF. Ave. OG. Ave. OH. Ave. OI. Ave. OJ. Ave. OK. Ave. OL. Ave. OM. Ave. ON. Ave. OO. Ave. OP. Ave. OQ. Ave. OR. Ave. OS. Ave. OT. Ave. OU. Ave. OV. Ave. OW. Ave. OX. Ave. OY. Ave. OZ. Ave. PA. Ave. PB. Ave. PC. Ave. PD. Ave. PE. Ave. PF. Ave. PG. Ave. PH. Ave. PI. Ave. PJ. Ave. PK. Ave. PL. Ave. PM. Ave. PN. Ave. PO. Ave. PP. Ave. PQ. Ave. QR. Ave. QS. Ave. QT. Ave. QU. Ave. QV. Ave. QW. Ave. QX. Ave. QY. Ave. QZ. Ave. RA. Ave. RB. Ave. RC. Ave. RD. Ave. RE. Ave. RF. Ave. RG. Ave. RH. Ave. RI. Ave. RJ. Ave. RK. Ave. RL. Ave. RM. Ave. RN. Ave. RO. Ave. RP. Ave. RQ. Ave. RR. Ave. RS. Ave. RT. Ave. RU. Ave. RV. Ave. RW. Ave. RX. Ave. RY. Ave. RZ. Ave. SA. Ave. SB. Ave. SC. Ave. SD. Ave. SE. Ave. SF. Ave. SG. Ave. SH. Ave. SI. Ave. SJ. Ave. SK. Ave. SL. Ave. SM. Ave. SN. Ave. SO. Ave. SP. Ave. SQ. Ave. SR. Ave. SS. Ave. ST. Ave. SU. Ave. SV. Ave. SW. Ave. SX. Ave. SY. Ave. SZ. Ave. TA. Ave. TB. Ave. TC. Ave. TD. Ave. TE. Ave. TF. Ave. TG. Ave. TH. Ave. TI. Ave. TJ. Ave. TK. Ave. TL. Ave. TM. Ave. TN. Ave. TO. Ave. TP. Ave. TQ. Ave. TR. Ave. TS. Ave. TT. Ave. TU. Ave. TV. Ave. TW. Ave. TX. Ave. TY. Ave. TZ. Ave. UA. Ave. UB. Ave. UC. Ave. UD. Ave. UE. Ave. UF. Ave. UG. Ave. UH. Ave. UI. Ave. UJ. Ave. UK. Ave. UL. Ave. UM. Ave. UN. Ave. UO. Ave. UP. Ave. UQ. Ave. UR. Ave. US. Ave. UT. Ave. UY. Ave. UZ. Ave. VA. Ave. VB. Ave. VC. Ave. VD. Ave. VE. Ave. VF. Ave. VG. Ave. VH. Ave. VI. Ave. VJ. Ave. VK. Ave. VL. Ave. VM. Ave. VN. Ave. VO. Ave. VP. Ave. VQ. Ave. VR. Ave. VS. Ave. VT. Ave. VY. Ave. VZ. Ave. WA. Ave. WB. Ave. WC. Ave. WD. Ave. WE. Ave. WF. Ave. WG. Ave. WH. Ave. WI. Ave. WJ. Ave. WK. Ave. WL. Ave. WM. Ave. WN. Ave. WO. Ave. WP. Ave. WQ. Ave. WR. Ave. WS. Ave. WT. Ave. WY. Ave. WZ. Ave. XA. Ave. XB. Ave. XC. Ave. XD. Ave. XE. Ave. XF. Ave. XG. Ave. XH. Ave. XI. Ave. XJ. Ave. XK. Ave. XL. Ave. XM. Ave. XN. Ave. XO. Ave. XP. Ave. XQ. Ave. XR. Ave. XS. Ave. XT. Ave. XU. Ave. XV. Ave. XW. Ave. XX. Ave. XY. Ave. XZ. Ave. YA. Ave. YB. Ave. YC. Ave. YD. Ave. YE. Ave. YF. Ave. YG. Ave. YH. Ave. YI. Ave. YJ. Ave. YK. Ave. YL. Ave. YM. Ave. YN. Ave. YO. Ave. YP. Ave. YQ. Ave. YR. Ave. YS. Ave. YT. Ave. YU. Ave. YV. Ave. YW. Ave. YX. Ave. YZ. Ave. ZA. Ave. ZB. Ave. ZC. Ave. ZD. Ave. ZE. Ave. ZF. Ave. ZG. Ave. ZH. Ave. ZI. Ave. ZJ. Ave. ZK. Ave. ZL. Ave. ZM. Ave. ZN. Ave. ZO. Ave. ZP. Ave. ZQ. Ave. ZR. Ave. ZS. Ave. ZT. Ave. ZY. Ave. ZZ.

TEACHERS

Vocational, Home Economics, Civics, English, Commercial, Math, Science, Physical Science, and Mathematics. Office, 1100 University, Michigan State College, East Lansing, Michigan. Phone 1234. K. Grand River, East Lansing, Phone 1234.

BOARD

BOARD AVAILABLE to right Home seekers. For rent or buy. See high. Available by Sept. 1st. 100, 150, 200.

SITUATIONS WANTED

TRUMPET PLAYER, 10, 15, 20, 25, 30, 35, 40, 45, 50, 55, 60, 65, 70, 75, 80, 85, 90, 95, 100, 105, 110, 115, 120, 125, 130, 135, 140, 145, 150, 155, 160, 165, 170, 175, 180, 185, 190, 195, 200.

ROOMS FOR RENT

ONE MAN STUDENT wanted to share house with 2 others. Clean, bright, 100, 150, 200, 250, 300, 350, 400, 450, 500, 550, 600, 650, 700, 750, 800, 850, 900, 950, 1000.

WANTED

BASE PRINTER for 100, 150, 200, 250, 300, 350, 400, 450, 500, 550, 600, 650, 700, 750, 800, 850, 900, 950, 1000.

SWAIN

JEWELRY

MOVED TO

State Theater Bldg. 211 Abbott Rd.

Modern Greeks

Dan Capid and Uncle Sam Corral Greeks

By Darh Wuerfel

The mortality list among fraternity men is really long this fall—what with the army claiming a bunch of the upperclassmen and sweet romance claiming the rest. The Hesperians lost Bill Morris and Pete Van Valin to the army or corps, and Art Curtis is striving for the heights in the navy air corps.

JOHNSON KINGS A-BELLE

Two more Phi Delta pins have left their own backyard. Huntley Johnson has passed his to Margaret Landry, a Delta Zeta at Louisiana State university. Margaret was elected Miss Southern Belle by the students at the university last year, because of her charms, etc.

Chuck Bigelow, who by the way is working in defense industries instead of returning to school this year, has pinned Sherry Wales, of Kappa Alpha Theta.

UNCLE SAM WANTED THEM

Lambda Chi Rho Streiff and Dwight Austin are both in the army now, and three others are working around in the various air corps, namely Don Troyer, Joe Glazer, and Jerry Crane. Undaunted by the dent of their roll call, the remaining LCAs are

See GREEKS—Page 3

Hungry for — HOME COOKING — THE MAC-ANN CLUB

135 Ann St., cor. M. A. C.
 Special Rates by Day or Week
 For Reservation, Phone 2-0124

Get Your MUMS for the MICHIGAN GAME

Jewett's Flowers

128 W. Grand River

Phone 4-5467

EPISCOPAL STUDENTS ST. PAULS EPISCOPAL CHURCH OTTAWA AT SEYMOUR

YOUTH SUNDAY
 September 28

DOWNTOWN
 Ottawa at Seymour
 8:30 A. M. Holy Communion
 11:00 A. M. Morning Prayer
 M.S.C. Student Preaching

EAST LANSING
 115 Abbott Road
 8:45 A. M. Holy Communion
 1:30 P. M. Vesper Service

THE REV. C. W. BRICKMAN, RECTOR

FOR GAME TIME WALK-OVER



The Shoe with the Silver Lining

Why do Walk-Overs feel so smooth next to your feet, mile after mile? It's the famous hand-tailored, wrinkle-free lining. BROADMOOR Bootmaker brown. 7.95

BURTON'S WALK-OVER SHOE SHOP

221 S. Washington Ave.

LEARN TO DANCE

Adult Classes in Social Ballroom Dancing
 STARTS OCT. 7 AT 7:30 P. M.
 ENROLL NOW—Private Lessons by Appointment

LENORE ARMSTRONG

312 TUSSING BLDG.

PHONE 4031

KOSITCHEKS

"BARB OR YAN FOR THE APEX"

AFTERNOONS OUR MAIN FLOOR RESEMBLES A 'STATE PEP MEET.'

IT'S ALL HERE, FELLOWS. AND WE ARE HAPPY TO SHOW YOU THE CREATIONS OF 1941 AND 1942.

1941 Varsity Town's Blue Book Is Here—Get ours for the asking is here—get yours for the asking.

H. KOSITCHEK and BROS.

CAMPUS NEEDS

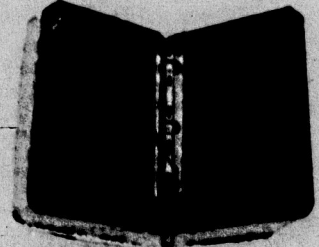
Casual Bags to carry on campus—

1.00 to 5.00



Parcel Post Laundry Case of rugged woven canvas. Refills always available.

1.29



Standard Size Zip Note Books for class notes. Cwclude.

2.00 Others to 5.00

No charge for embossing name or initials.

167 South Washington Ave.

Liebermann's

Near Michigan Ave.

Typewriter BARGAINS

- 1 UNDERWOOD 10" \$ 17.50
- 1 UNDERWOOD 11" \$ 22.50
- 1 ROYAL STANDARD \$ 18.00
- 5 Underwood Late Model Keyset 1 YEAR GUARANTEE \$ 42.50

TERMS: \$1.00 per Week

CAMPUS BOOK STORE

OPPOSITE UNION

ROUNDUP

(Continued from Page 2)

Condemns Lindbergh

The international executive board of the United Automobile Workers, meeting in Detroit yesterday, issued a statement denouncing Col. Charles Lindbergh as a "traitor to the cause of our country."

STUNTED TODAY 1 TO 11 P.M.

STATE

HURRY — LAST DAY

Marjorie Main

"BARNACLE BILL"

STARTING SUNDAY

SONGS!

DANCES!

GAITY!

MOON OVER MIAMI

IN TECHNICOLOR!

FEATURING

DON AMECHE

BETTY GRABLE

ROBERT CUMMINGS

and Charlotte Greenwood

Jack Haley • Carole Lombard

Colma Wright, Jr.

Directed by Walter Lang

A 20th Century-Fox Picture

EXTRA TREATS

"The Sign of the Cross" • "The Sign of the Cross"

Sports • News

FOOTBALL

(Continued from Page 1)

For the remainder of State's lineup, which will be comprised of 8 seniors and two juniors, it is expected that Bachman will name Bob Friedlund at left end; Fred Carter, left tackle; Bill Kennedy, left guard; Tony Arena, center; Bill Rupp, right guard; Frank Karas, right tackle; Lew Smiley, right end; Wilford Davis, quarterback; Wy Davis, left half; Jack Fenton, right half, and Charley Carey, fullback.

Several ramifications can still govern the Spartan team which will open the show, however. Bob McNeil, the Phoenix, Ariz., plunger, may be given the right end spot, while Karas, whose injured leg has kept him on the sidelines this week, may give way to either Dick Mangrum or Howard Pound. Carey is starting in the place of Eddie Rippmaster, whose wrenched knee has counted him out for three weeks at least.

MICHIGAN'S LINE WILL BE PLENTY TOUGH

There'll be others in the game, naturally, such as Mike Schell, who will make his debut at right halfback, Glenn Deibert at end, and Barney Neubert and Don LeClair, guards.

As for Michigan, Herbert Orrin (Fritz) Crisler, Wolverine head man, and Earl Martineau and Clarence (Biggy) Munn, his assistants, are just a little uncertain as to just what they've got and how far it will go. Michigan's line, make no mistake, is tough, however. From end to end there will be Joe Rogers, Al (Ox) Wister, Bob Kolesar, Bob Ingalls, Bill Melzow, Reuben Kello, and Harlin Fraumann, all veterans. Also slated for extensive duty are: Merwin Pregulman, sophomore guard whom Lansing fans will remember as the former Lansing Central all-state center; Julian Franks, another guard, and Tom Kuzma and Paul White, halfbacks.

Expected to start in the backfield for Michigan are George Geithaml, quarterback, with Davey Nelson and Harold Lockhard, halves, and Bob Westfall, fullback. That's the way they'll line up and if Bachman and his men have anything to say about it, Spartan fans aren't going to wait 19 years for another victory.

—again—

BENNIE DELSON

And His Famous

TRIO

With

IRENE

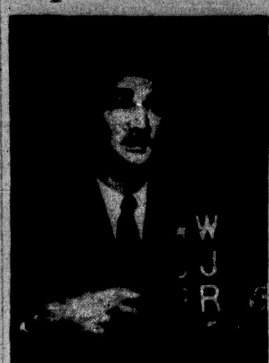
Featured Nightly

the HOFBRAU

with the songs you like to hear

Stop In After We Win the Game

Super Grid Rivals to Air Game



TOM HARMON

Tom Harmon, Michigan All-American, has nothing on Johnny Pingel, Michigan State's last All-American. Both former stars of the gridiron game are going to make their radio debut Saturday during the Michigan-Michigan State game.

Pingel will work with Ed Dodge of Chicago on all Michigan State football games, both home and abroad, this year. Their voices will originate from WKAR, the Michigan State college station, and will also be carried by CKLW, Detroit and Windsor; WCAR, Port Huron; and WSAM, Saginaw.

Harmon will work with Harry Warner, a Michigan State alumnus, for WJR, which is broadcasting all Michigan games this year. Saturday's annual intra-state classic also will be aired throughout the nation by Columbia Broadcasting company with Ted Husing at the mike.

CARS ON CAMPUS

All student cars must be registered with the campus police by Monday night. Non-registration, parking tickets and the like will be issued starting Tuesday.



JOHNNY PINGEL

GREEKS

(Continued from Page 2)

January ahead, with a radio dance already scheduled for Saturday the 4th.

From the Sigma Kappa house comes the news of a new merger—Sylvia Jean Shick, who is being married to Dick Bush, former S. A. E. Dick went into the army after graduation last June.

"ESCAPE" STARRING KAPPAS
The Kappa Sies claim a record—seeing as how every one of their men is back this year—none caught in the draft even.

Also happy about the whole thing, the SAE's report that they have added to their ranks: Bill Mann, who left school for a year in order to be a state trooper, is back again; and Bernard Johnson, grad of '40, is visiting the house during his furlough from Fort Meade.

Ten girls are being initiated today by Alpha Xi Delta. They include Kate Cowin, Betty Lehman, Fran McCleery, Barbara Metcalf, and Jo Nichols. Likewise on the list are Jean Stoffel, Kay Taffee, Cherry Todd, Mary Vint and Jane Wilkinson. A formal dinner will follow the ceremony.

ATO'S MIDDLE-AISLE IT
The ATO's are really succumbing to the feminine influence. Roger Smith and Louis Newlin have both been married during the summer. Dick Ode is engaged, and Nate Mehay was married to Lucille Simmons, who graduated.

The LQC Lamar school of law at Emory University was the first accredited law school in the south-east.

last June.
The big surprise of summer vacation to the Delta Chis was the marriage of their house treasurer, Gib Ketchum, to Jean Ceeley. One of Uncle Sam's first lieutenants, Bob Cross, DC alum, is now spending a week at the house.

SPARTAN MAGAZINE

All students interested in working on the editorial or business staffs of The Spartan magazine are asked to see either Bob Dawson or Don Spalding in room 14 of the Union annex.

Big, Little Sisters

MAR-JO SHOP

for

UNDIES, HOSE, ROBES



CRAIG WOOD

winner of the National Open, the Masters and the Metropolitan Open, three of the most coveted tournaments in golf. From beginner to master it's Chesterfield.

FROM BEGINNER TO Master

It's Chesterfield

Smokers everywhere like their COOLER Milder BETTER TASTE

Chesterfield's mounting popularity is due to the Right Combination of the world's leading tobaccos... the best known cigarette tobaccos from Tobaccoland, U.S.A., blended with the best that come from abroad.

EVERYWHERE YOU GO *They Satisfy*

GLAD YOU'RE BACK

WELCOME BACK FOR ANOTHER YEAR

Make Our Store Your Headquarters for Fine College Apparel • Clothing • Furnishings • Hats and Shoes

THREE ROTC SHOES

THE "TRAMPER" THE "CHUCKER"

\$6.50

\$6.50

Three Shoes That Can Take It. Built for Comfort and Long Wear • Plus Style and Good Looking

THE "KNOCK-ABOUT"

\$3.98

JIM BRAKEMAN

321 E. GRAND RIVER

DID you KNOW

YOU CAN BUY

an

Eversharp PEN

guaranteed FOREVER

\$5.00

Just

Campus Book Store

Opposite Union

Please patronize Michigan State News advertisers.

COY EKLUND And His Band

Res. 5-6426 Off. 2-8711



State's Own Jimmy Hays Fights Illness On West Coast

From the office of Glen O. Stewart, alumni director, comes news of one of State's better-known graduates, one James Grant Hays III by name.

Jimmy, as those students who know him will recall, has been ill for the past two years, and has just recently flown to California in an effort to cure himself of his disease. To give him a mental lift along his way, Stewart suggests that some of the lads break down and drop Jimmy a line.

His address, by the way, is James G. Hays III, care of Dr. Herbert J. Andrews, 1441 Westwood Blvd., West Los Angeles, California.

WOMEN'S ORIENTATION—

Tuesday and Thursday freshman women's orientation groups will meet in the Music auditorium instead of in the Horticulture lecture room as stated in the schedule book.



BUD BELL

Bud Bell, East Lansing sophomore who takes over Art Howland's dance band this year, will introduce his music to Michigan State freshmen and upperclassmen tomorrow evening at the all-college dance in the auditorium.

QUOTES

(Continued from Page 1)

Brigham voices his opinion with the statement, "I hope the game is one long series of goal-line stands and touchdown plays because that's where I'll be sitting."

"More experienced players" is the reason Pat Wren, sophomore from Milwaukee, gives. "Besides, Michigan has no halfbacks."

WKAR Announcer Don Way, Portland senior, observes that he has put his bets on Michigan State. "Just by sizing up Michigan without Harmon."

"From what I've read in the papers and heard from people who seem to know," says Betty Jane Youngman, junior from Lakeview, "I don't doubt at all that State is going to win."

Bob Edgell, Elmira, N. Y., sophomore and professional magician believes "We'll win that game as easily as pulling a rabbit out of a hat," and Betty Jenks, sophomore from Niagara Falls, N. Y., considers that State will win "because it is a better school. Besides, State's never lost a game I've attended."

Basing his decision on a "marvelous defensive wall," Chuck Dorman, Grand Rapids senior, also favors State. "We haven't too many backs, but what we have are good," he says. Evelyn Davis, Fremont junior, points to Harmon as what was last year the Michigan sparkplug, and foresees a loss of Michigan morale. "Chuck Hubbard, of Freeport, N. Y., decides on MSC because 'When Joe Holinger is pessimistic, that means just the opposite.'"

Information

Condensed Capsules Of Timely News

MUSIC TRYOUTS—

Tryouts for choir, chorus, and men's glee club will be held today from 8 a. m. to 12 noon. Tryouts for women's glee club will be held today from 8 a. m. to 12 noon and from 1 to 3 p. m. Orchestra tryouts will be held Monday and Wednesday from 3 to 4 p. m. and Thursday from 7 to 9 p. m. All tryouts will be in the Music building.

WOLVERINE AD STAFF—

There will be a meeting of the advertising staff of the Wolverine in room 4 of the Union annex Monday at 3 p. m., according to Ed Cholek, advertising manager.

STATE NEWS—

First meeting of the State News editorial, sports, and business staffs will be held in the State News office, room 8 of the Union annex, today at 4 p. m.

Take Cover, Frosh! Here Comes First Issue Of Spartan

Celebrating their return to civilization, The Spartan staff, hitherto located in out-of-the-way campus dens, announces that the first issue to be published in their new office in the Union annex will go on sale Monday.

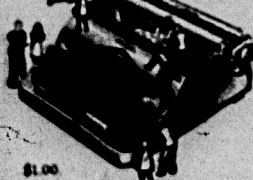
This month's edition of the campus humor magazine sports the curvaceous Sandra Sue on its bright red cover, and on the frontpiece appear the words to the increasingly popular song, "M. S. C. Shadows."

Also noteworthy is the article "Should the United States Enter World War II?" in which Dr. H. R. Hunt, professor of zoology, and Dr. H. S. Patton, professor of economics, discuss the pros and cons of America entering the war. Dr. Hunt is a member of the America First committee.

Men come in for a general going-over in two stories, entitled "Lounge Tactics Revised" and "Men Is." And, of course, there are the usual features, including Fashions for Freshmen, Touch and Go, and Dead End.

Featuring dates of all important events of the year, the second annual Spartan calendar will go on sale Monday, according to Don Spaulding, Spartan business manager. Price of the calendar has been reduced substantially this year.

CORONA



\$100 a week plus a small down payment, will buy any Corona.

CAMPUS BOOK STORE
OPPOSITE UNION

Church Bells

Twin Services Will Start At Peoples Church

By GLORIA INGERSOL

Beginning this Sunday, Peoples church will offer two identical services at 9:30 and 11 a. m. Dr. N. A. McCune's sermon for Freshman Sunday will be "We Are Living Now." Student supper hour from 5:30 to 6:15 p. m. in the social hall of the church will be followed by student fireside hour in the student parlors from 6:15 to 7 p. m. and student vespers from 7 to 8 p. m. in the auditorium.

Students wishing to attend Sunday services at Trinity Lutheran church (Missouri synod) in Lansing, will meet at the west entrance of the Union for free transportation. A bus will leave each Sunday morning at 10:25, and will return after the service.

Morning worship will be held at the College Lutheran church, 510 Linden street, at 10 and 11 a. m. Rev. William Young, pastor, will have as his sermon theme, "Orientation In God's University." The Lutheran Student club will meet at 7:30 p. m. in the Union building.

The Christian Science organization held a mixer in the sun porch of the Union building last night.

Harry B. Whitley, transfer student from Wayne university, and member of the National Youth commission of the Episcopal church, will occupy the pulpit of St. Paul's Episcopal church in Lansing this Sunday.

Rev. C. W. Brickman, rector, has planned to observe the Youth Sunday of the church by having Whitley preach. The service will begin at 11 a. m.

Agents, FBI Discuss Law Enforcement

At the request of Special Agent John S. Bugas of the Detroit FBI office, approximately 50 law enforcement agents met in Kedzie Chemical building yesterday to formulate an effective system of law enforcement officer mobilization plans for national defense.

Principal speakers were Hayne Thompson of the FBI, talking on "Bombs and Explosives"; Lt. Harold Mulbar of the Michigan State Police on "The Michigan State Police and Internal Security"; and M. W. McFarlin of Grand Rapids discussing "Federal Statistics Effecting Local Police."

WE CAN REPAIR ANY MAKE



Typewriter

CAMPUS BOOK STORE

OPPOSITE UNION

TEXTBOOKS AND SUPPLIES

STATIONERY

LEATHER NOTE BOOKS

FOUNTAIN PENS

LAUNDRY BAGS

LAB APRONS

Open Evenings All Next Week

STATE COLLEGE BOOK STORE

DEPT. OF
MICHIGAN STATE COLLEGE
130 W. Grand River Ave.

Watch for

Jacobson's

Enlarged Campus Shop

NOW LOCATED AT
115 East Grand River

Ready Soon

Enlarged Fashion Section Beautiful New Shoe Dept.

Jacobson Exclusives

Carlise Junior Original Dresses

Belle Sharmia Hose

Worth Perfume

Edith Lance's Brassieres

Wear Right Gloves

Miss Swank Slips

Superb Gloves

Miss Swank Pajamas

Hickory Foundations

Helena Rubenstein
Cosmetics

Ann Arbor

Jackson

Battle Creek

East Lansing

a Musical
Career



HOT SWING! SWEET SWAY!

THE BEST BANDS ON CAMPUS

ARE MEMBERS OF

LANSING FEDERATION OF MUSICIANS

SERVING
M. S. C.



SINCE
1903

LEADERS OF ORGANIZED ORCHESTRAS

RED DRENNAN
ARN DE CAMP
BUD BELL
DUSTY RHODES

PHONE

44318

28381

29578

44977

BOB SIEGRIST

DON HOFFMAN

COY EKLUND

DERWOOD CARN

PHONE

29617

26351

28711

MASON 5761

NOTICE - STUDENT MEMBERS - REPORT ANY CHANGE OF ADDRESS TO SECRETARY, PHONE 2-5314, AT ONCE

How to Win Friends
in one easy lesson.
Treat yourself and others to
wholesome, delicious Wrigley's
Spearmint Gum. Swell to chew.
Helps keep breath sweet, teeth
bright. *The Flavor Lasts.*



PLAY IT SAFE



Take One of These

KNEE LENGTH

**GABARDINE
COATS**

Ann Arbor Saturday to with you

weather is these days.

weather is these days.

They are WATERPROOF, DRESSY

and very light weight

\$10.95

HURD'S
LANSING AND EAST LANSING
1000 EAST LANSING

The Foul Ball

*Why Take Our Word For It?
Here's the Dope. Figure Out
Your Own Answer.*

By Bob Astley

Ah, yes, and our answer to the question of the day? Tomorrow's game will be closer than a snake's tongue to a toss-up, but this column is picking State to win by a touchdown-or-less margin. The Foul Ball has arrived at this conclusion by weighing the pertinent facts in the matter and deciding that the pros outweigh the cons. Here are those facts as the experts see them. Balance them up and make your own decision.

The biggest factor in favor of a State victory, as we see it, is Michigan's loss of Tom Harmon. It's not so much that Coach Fritz Crisler will miss Harmon's individual talents as it is that Harmon's loss will render obsolete the strategy of attack which brought so many laurels of triumph to Ann Arbor in 1940.

Last season the Michigan mentor who went to confuse the opponent by changing the ball carrier according to the defense offered. The attack usually opened by sending Westfall through the center into the defense pulled its line into close formation. Then the strategy was to send Harmon around the ends until the line was forced to spread again. Such a procedure had opposing lines confused and expanding like an accordion, with Michigan's victory usually resulting. The Westfall remains, but with no speed-inherent possession, and the line's ability to spread is not unimpaired, this technique is outmoded.

Secondly, State has this season one of those comparatively rare items in collegiate football—a senior team. The outstanding feature about this senior team in regard to tomorrow's game is that no player will enter the contest who has ever participated in a victory over Michigan. For the majority of the Spartan eleven this will be the last chance to do so, and that inspiration should offset several possible weaknesses.

The final factor that the experts figure enters into the probable out-



HARMON

All But Three of Bachman's Injury Headaches Vanish

Hand Charlie Bachman a bottle of aspirin. He's used up five or thereabouts already.

As if it wasn't bad enough to have approximately 15 days to round a football squad in shape for its traditionally most important game, normally stout-hearted Charlie has been beset by the nemesis of the best laid-out coaching mind—the injury jinx.

Almost on an average of every other day, one injury or another has cropped up in the State grid camp. In fact, Spartan stock in tomorrow's game, in all, no less than eight gridlers have at one time or another been regarded as unlikely to be ready for the contest against Michigan.

However, the final reckoning today as Kansas football fever is using their knee before entering for Ann Arbor tomorrow looks that all but three of the injury list will be ready for action.

Of the three that are definitely out of tomorrow's game, Ed Ripmaster, junior halfback, is Bachman's biggest loss. Michigan has counted heavily on Ripmaster, who's laid up with a knee ailment that threatens to leave him on the sidelines for four weeks if not for the season to fill the vacancy fully. The other two are the crossing granddaddy back, west well as a

FROSH— MERRITT and BAILEY

117 N. Washington — across from Koscich's

UPSTAIRS — LANSING

*Is Where Upperclassmen Buy Their
ARMY SHOES
As Well as Dress
Army Shoes—4.45*



On the
"seamy side"

A Step to Distinction

Crosby Square
Authentic Fashions
IN MEN'S SHOES

Hand-buffed raised seams are
the latest word in he-man
fashions. This season's popu-
lar choice of active men for
ruggedness with health-
ful comfort. The mod-
est price belies their
"expensive" look.
Try on a
pair now.

State News Sports

Additional Sports News on Page 5

Some of the forthcoming encounter is that the Michigan backfield will enter the fray as a unit untried under playing conditions. With Harmon and Forest Evashevski necessary fixtures on the field during 90 per cent of the 1940 Wolverine schedule, Crisler had no opportunity to give their understudies much needed experience. This should show up tomorrow. It is doubtful if, with only two weeks of practice, the Michigan backfield will be able to coordinate in a manner which winning football requires.

It is on these three assumptions that this column bases its prediction of a Spartan victory, but, for the sake of argument, here is the other side of the picture on which some of the experts base their forecasts of a Michigan triumph.

Despite the loss of Harmon, Evashevski, Ed Frutkin, Paul Kromer, Milo Sukup and Ralph Fritz, observers maintain that the Wolverines still boast a lineup that will prove too much for the Spartans. They point out that the 1941 line is equal to, if not better than, Michigan's 1940 forward wall. They add that Westfall was close to Harmon in yardage gained last fall and that the Ann Arbor piler should provide plenty of trouble this season even without Harmon's aid. In addition, reports from the Michigan camp carry tales of capable replacements for Harmon and Evashevski in Norman Call, sophomore Tom Kuzma and George Cetham.

Pointing out State's weaknesses, Michigan touts bring up the point that it is almost tradition in collegiate football for senior teams to get "tired of the whole thing" and to be prone to rest on past laurels. As a final thrust they claim that the Spartans are leaderless without a sparkplug. For illustration, they refer to great State teams of the past, teams which, almost without exception, had one player of outstanding ability to spark them. They mean, of course, the teams sparked by such greats as Johnny Pingel, Kurt Warmbein, Ed Klewick and Sid Wagner.

Those are the angles, take your choice. State looks good and unless Crisler confuses the Spartans by sending in his sophomore fullback candidate, Joseph Joseph, or Bob Kolesar talks the boys out of the game, we figure they'll still look good after the final whistle.

FLASH MOVIE REVIEW—"Harmon of Michigan"—All the corn doesn't come from Iowa.

Bach's Reign Shows 50-50 Record

1933	State 6, Michigan 20
1934	State 16, Michigan 0
1935	State 25, Michigan 6
1936	State 21, Michigan 7
1937	State 19, Michigan 14
1938	State 0, Michigan 14
1939	State 13, Michigan 26
1940	State 14, Michigan 21

Twelve of Purdue's gridmen have been employed in highway and road construction jobs during the past summer.

For the past dozen years, Purdue has averaged nearly seven victories in ten starts in Western Conference football competition.

And After Michigan?

Oct. 11—Marquette university, East Lansing.
Oct. 18—Santa Clara university, San Francisco.
Oct. 25—Wayne university, East Lansing.
Nov. 1—University of Missouri, East Lansing (Homecoming).
Nov. 8—Purdue university, Lafayette, Ind.
Nov. 15—Temple university, East Lansing.
Nov. 22—Ohio Wesleyan university, East Lansing.
Nov. 29—West Virginia university, Morgantown, W. Va.

CLASS of '45

Pick Up Your

OFFICIAL

**GYM
EQUIPMENT**

at

-GARDS-

Shop For Men

Opposite Union

Save Time—Save Money

Greetings:

from

TNT

And the Boys in the Band

Tommy Tabler's Orchestra
Phone 1-8738

SPARTANS ALWAYS MEET

In The

UNION GRILL

FOR

- QUICK COKES
- SPECIAL DATES
- DAILY BREAKFAST — 7:15—9:00 a. m.
- SUNDAY NIGHT SUPPER — 5:00—8:00 p. m.

Table Service

Michigan Staters make the Union Grill headquarters for eating, coke dates, and just plain gab fests. Tables and booths are always filled between classes and during the evenings when students get a hankering to meet friends and classmates over a coke or cup of coffee.

UNION GRILL
The Most Popular Spot On Campus
Open 7:00 a. m. to 11:00 p. m.

**WE
BUY
USED
Books**

**CAMPUS
BOOKSTORE**
OPPOSITE UNION