

FOR VICTORY  
UNITED STATES WAR  
BONDS-STAMPS

# MICHIGAN STATE NEWS

Daily Student Publication of Michigan State College

Weather  
Continued cold.

EAST LANSING, MICHIGAN, WEDNESDAY, JANUARY 13, 1943

NO. 57

## Today's Campus

### Sees His Picture

Franklin P. Adams is the first student to see his face in a picture. He expressed surprise when he picked up a copy of yesterday's State News and saw an especially broad grin with his name under it. Adams didn't know the particular photo, which came from a Life magazine series on "Information Please." Like more than a few other students, Adams was surprised. "That's a hell of a picture. Walking away, looking like that," he said.

### This Way, Please

Adams may have been a freshman when he was "just didn't know," but anyway, a fellow student in South Campbell's dorm last week-end looking for a girl on second floor. Adams, frightened by the alarm, was directed finally to the library office and that (unfortunately, he added) was that.

## Full House Hears 'F.P.A.' Tell 'Information Please' Story

By JOAN MEYERS  
The 5,000 persons who pushed and packed into the College auditorium, sitting on the stairs, standing against the stairs, to watch the favorite story "Information Please," Frank Adams, jump through the physical and mental wazirry, they were disappointed. Adams, instead, was an expert's sense of humor. When the amazed audience became accustomed to the idea that Adams was a serial collector of such inanities as "Nash's" names they settled down to enjoying themselves. Adams drew his biggest laugh of the evening with his own retelling of "Christopher Columbus," a gay ditty in which Adams described how "C. C., and Ferse," decided to "over the U. S. A., where west began."

Adams, briefly related the story of how he came to work on the program, "Information Please." At his wife's insistence through Dorothy Thompson, agent, Adams came to be known to millions of radio quiz program listeners as an "expert." Adams, briefly related the story of how he came to work on the program, "Information Please." At his wife's insistence through Dorothy Thompson, agent, Adams came to be known to millions of radio quiz program listeners as an "expert."

## Faculty Picks Five Quiz Kid Challengers

Youthful Brains to Meet Professors Jan. 27 in I. Q. Battle

Five Michigan State college faculty men, and an alternate, who will oppose the "Quiz Kids" of radio fame in a battle of wits to be staged in College auditorium Wednesday, Jan. 27, were announced yesterday by Prof. Paul Bagwell, chairman of the Faculty club's selection committee.

The intellectual youngsters already hold decisions over University of Michigan and University of Chicago experts. But in all fairness to the professors, the "Quiz Kids" have lost one engagement to the Chicago experts.

Those chosen to represent the college are Prof. J. M. DeHaan, head of the department of philosophy and psychology; Prof. V. H. Noll, head of the department of education; Prof. W. D. Bates, mathematics; Prof. W. R. Fee, history; S. W. Lewis, instructor and research assistant in botany.

## General Aurand Visits College 'Informally'

Maj. Gen. H. S. Aurand, commanding general of the sixth service command, conferred with Pres. John A. Hannah and the staff of the ROTC department on the campus yesterday, but an official report stated that his visit to Michigan State college was "entirely informal."

General Aurand arrived on the campus yesterday morning, accompanied by certain members of the service command staff.

He met with the officers of the local ROTC unit, but discussions were in keeping with the informal nature of his visit, according to Capt. G. H. Branch, ROTC adjutant.

## Japs Land More Troops in Burma

LONDON, Jan. 12 (AP)—The Japanese suddenly have displayed strong resistance in the defense of Akyah against British troops who have advanced to within about 15 miles of that Bay of Bengal port in Burma, and have landed several thousand troops in Indo-China to bolster the Burma front, it was reported today.

A British communiqué from New Delhi said the Japanese were "resisting strongly" against continued pressure of Field Marshal Sir Archibald P. Wavell's forces, and a Reuters correspondent with the troops said British patrols had penetrated as far as Foul point at the tip of the Mayu peninsula.

A Chinese army spokesman was quoted in dispatches from Chungking as saying that several thousand Japanese reinforcements for Burma had been landed in Indo-China. Presumably the Japanese intended to move these men overland rather than attempt the difficult and dangerous transport journey by way of Singapore and the Bay of Bengal to Rangoon.

## U. S. May Seize Penn State Coal Mines from Strikers

WILKES-BARRE, Pa., Jan. 12 (AP)—Pennsylvania's vast anthracite industry, beset by a wildcat strike of 19,000 miners, faced a possibility of government seizure tonight, as the war labor board demanded an immediate end to the walkout which, it said, had brought coal stocks to a level endangering prosecution of the war.

## Giraud, deGaulle to Meet Soon to Attempt Union

French Announce Further Arrests of Suspects Involved in December Murder of Admiral Darlan

ALLIED HDQ. IN NORTH AFRICA, Jan. 12 (AP)—Gen. Henri Giraud, French high commissioner in north and west Africa, will meet Gen. Charles de Gaulle, Fighting French leader, in the near future in order to try to reach an agreement between their two forces, an official French spokesman said tonight.

## Hannah Reveals Appointment of WAAC Adviser

At the request of Mrs. Oveta Culp Hobby, director of the WAAC, Pres. John A. Hannah has appointed a member of the faculty of Michigan State college as an adviser to local WAAC enrollees.

Mrs. Lucia Nesom, director of the college speech clinic and adviser to the PanHellenic council, received the appointment, and will assist women students of Michigan State in making their decisions about entering the WAAC.

At this time, the WAAC is enrolling college women and immediately returning them to active status until the completion of the college year.

## Russians Engage Germans in Bitter Fighting Along Lower Don River

LONDON, Jan. 12 (AP)—Red army troops have captured 10 more villages and settlements in the Caucasus in their continuing offensive, the Soviets announced tonight in a communiqué that also acknowledged heavy Nazi resistance in the lower Don river drive toward Rostov.

Six villages were captured in the vicinity of Pyatigorsk and Mineralnye Vody in the push northwestward along the Baku-Rostov railway, the midnight communiqué said in a broadcast heard here by the Soviet monitor.

Four other points were seized in the area of Zimovniki, 130 miles southwest of Stalingrad on the railway leading to Salsk.

Along the lower Don river where the Russians last were reported about 60 miles east of Rostov, the Soviet communiqué also announced the capture of several localities, but did not identify them. For three days now the Russians have not claimed any specific gains in this area.

## Air Forces Offer Weather Course

Men enlisted with the E. R. C. as well as those registered with selective service are eligible for the special army-sponsored meteorology training program, according to Harold A. Anderson, consultant for the army air forces who was here yesterday to explain the program.

Men students between the ages of 18 and 30 who can pass the reserve officers' physical examination and who have been graduated from high school with two years of mathematics including algebra and plane geometry, and one year of high school science are eligible, Anderson said.

Students wishing to find out more about the program should consult G. R. Heath at the Dean of Men's offices.

## CDC Slogan Contest Offers J-Hop Tickets

By DAVE EAST  
Want to win a ticket to the J-Hop? Well, just sit down and think up a clever slogan for Spartan defense activities, because Coordinating Defense Council's newly incorporated Defense Planning board announced yesterday that a campus-wide slogan contest, opening today, will reward the winner with a ducat to MSC's biggest formal party of the year.

The prize-winning slogan will be brief, original, and will aim primarily at sales promotion for War bonds and stamps here on the Michigan State campus. The contest, running through Saturday, is open to all Michigan State students. All entries must be submitted to the Office of Student Defense, second floor of Union annex, by Saturday noon.

Will Operate Booth  
A permanent booth in the Union, operated by DZV and PanHellenic council for the promotion of defense projects, will

display the winning slogan. Judges will be Patricia Reddy, PanHellenic president, John Schlueter, head of DZV and Manny Mullen, CDC chairman. The booth, serving principally as the campus center of War stamp sales, will also include a rumor clinic, a dispensary for tickets to all college functions for Wells hall service men and a general defense information booth. It will be installed next week.

Continue Pledging Drive  
CDC's War stamp pledging campaign, led by Sally Sawyer, Kappa Kappa Gamma representative to the defense body, has been resumed for winter term, although as yet no definite indication of the success of the drive has been available.

It has been suggested to students who have hesitated to pledge because their parents are subscribing regularly to bonds and stamps that their parents buy through Michigan State's program.

Headed by Henry Willis, L. A. 43, I. F. C. representative, the Defense Planning board will meet weekly. Other members are Peg Green, PanHellenic council, Tom Bowery, Mason-Abbot club; Mary Greenfield, S. W. L. and A. W. S.; Helen Swanson, CDC projects chairman; Walter Dow, CDC courses chairman; Vera Gardner, CDC secretary, and Mullen.

Will Prepare Women  
According to Chairman Willis, the board will undertake mainly to help solve the many problems facing the school as a result of the army-navy program.

"Steps should be taken to look into the future and have women trained to step into key campus activities and the supervision of these activities," he explained.

Mullen has announced that CDC's first meeting for winter term will be held tomorrow at 7:15 p. m. in the Spartan room of the Union. All student organizations are urged to have a representative present.

## Attends National Meeting

Prof. Hazel Strahan of the department of clothing and related arts, Home Economics, is now attending the personnel group meetings of the National Retail Drygoods association in New York city.

## TIME TABLE

- TODAY—  
Forestry club, 7:30 p. m.  
Forestry cabin  
Faculty Folk luncheon 1 p. m., Hunt Food shop  
State College club, 12 noon  
Faculty dining room, Union  
Buffs smoker, 7 p. m.  
Faculty dining room, Union  
A.W.S., 7:15 p. m.  
Org. room 2, Union  
Oratorical contest, 7:30 p. m.  
Spartan room, Union  
Med-Bio club, 7:30 p. m.  
Org. room 1, Union



# MICHIGAN STATE NEWS

Entered as second-class matter at the postoffice, East Lansing, Mich. Office located on ground floor of east wing of Union Building Annex, room 8. Published daily except Sunday and Monday mornings during the regular school year and weekly on Thursday mornings during summer session by the students of Member Associated Collegiate Press Michigan State college. Telephone—College Phone 8-1511. Editorial Office—Ext. 269; Business Office—Ext. 268. Subscription rates—3c per copy; \$9.00 per year by mail; \$1.50 per year by college carrier to students; \$2.25 per year by college carrier to non-students.

MEMBER OF THE ASSOCIATED PRESS  
The Associated Press is exclusively entitled to the use for republication of all news dispatches credited to it or not otherwise credited in this paper and also the local news published therein. All rights of publication on special dispatches here are also reserved.

Managing Editor, SHELDON MOYER  
Editorial Director, LEN BARNES Business Manager, JEAN WHITING

EDITORIAL STAFF  
Associate Editor, ELLIS BRANDT; Assistant Editors, BILL BARCLAY, BILL JOHNSTON, BILL MADDOX, JERRY TER HORST; Sports Editor, TOM RIOR-DAN; Associate Sports Editor, JOHN MARRS; Women's Editor, NEVA ACKERMAN.

Night Editor, WILLIAM BARCLAY  
Faculty Adviser, A. A. APPELEGATE

## — THE — WOMAN'S WORLD

By NEVA ACKERMAN

### A.W.S. Council

A.W.S. will have a regular meeting at 7:15 p. m. today in organization room 2 of the Union, according to Pres. Vera Deane. The question of 1 a. m. permission for Saturdays during winter term will be decided, and the meeting will be open to all women interested. Miss Deane said.

### S.W.L.

First S.W.L. group meetings for the term will be held today at 5 p. m. in Union annex rooms. Pres. Helen Swanson announced. Group leaders and sections will plan the term's activities and work. The groups and meeting places are: Drama, room 103; radio, 104; personality, 107; membership, 108; social service, 7; and art and publicity, 115.

### Y.W.C.A.

Mrs. Bernice Carlson, feature writer for the State Journal, will speak on "Community-War-time Problems" at the regular Y. W. C. A. meeting at 5 p. m. today in the student parlors of Peoples church. Pres. Betty Wirth says.

### Med-Bio Club

Prof. W. L. Mallmann of the bacteriology department will lead a discussion on "The Laboratory and Public Health" at the medical biology majors club at 7:15 p. m. today in organization room 1 of the Union, Vice-Pres. Jeanne Greenhoe announced. All members should bring money for dues and pins, Miss Greenhoe said.

## Winter Term Party Schedule

Jan. 15	Bell Hop	Union ballroom
Jan. 16	Spinners' Spin	Union ballroom
Jan. 22	Kappa Alpha Theta	Little theater
Jan. 23	Engineers' ball	Union ballroom
Jan. 23	Phi Kappa Tau	E. L. Masonic temple
Jan. 29	Medicine ball	Union ballroom
Jan. 29	Chi Omega	E. L. Masonic temple
Jan. 30	Band	Union ballroom
Jan. 30	Alpha Gamma Rho	E. L. Masonic temple
Jan. 30	Zeta Tau Alpha	Spartan room, Union
Feb. 5	J-Hop	Auditorium
Feb. 6	Kappa Delta - Alpha Gamma Delta	Union ballroom
Feb. 6	Alpha Xi Delta	Little theater
Feb. 6	Theta Chi	E. L. Masonic temple
Feb. 12	PanHellenic - Interfraternity council	Auditorium
Feb. 13	Lambda Chi - Kappa Sigma	Union ballroom
Feb. 13	Alpha Epsilon Pi	Little theater
Feb. 13	Pi Kappa Phi	E. L. Masonic temple
Feb. 19	Military ball	Auditorium
Feb. 19	Mason-Abbot	Union ballroom
Feb. 20	Alpha Chi Sigma	Union ballroom
Feb. 20	Delta Sigma Phi	E. L. Masonic temple
Feb. 26	Soph prom	Auditorium
Feb. 27	Alpha Omicron Pi	2nd floor, Union
Feb. 27	Sigma Chi	E. L. Masonic temple
Feb. 27	Sigma Kappa	House
Feb. 27	Alpha Phi - Alpha Chi Omega	Union ballroom
Feb. 27	Phi Kappa Pi	Little theater
March 5	Delta Zeta	Little theater
March 6	FarmHouse - Delta Chi	Union ballroom
March 12	Senior ball	Auditorium

(Note: This schedule is not complete because of several parties not yet registered. These will be listed in the State News when scheduled.)

## Buell Seeks Talent for Women Roles in 'Thunder Rock'

It is women, women and more women that Prof. Don Buell is on the lookout for in casting "Thunder Rock," this year's winter term play.

"Although there are only three women parts," he explained, "they are very different and unusual roles."

Tryouts will continue today, Thursday, and Friday nights of this week at 7:15 in 130 Morrill hall. Buell stressed that no casting had been done and no decisions will be made until after Friday's tryout. "It is necessary for a person to appear only one night as records are kept of each person's ability," he added.

Students must be scholastically eligible for college activities, Buell warned. Graduates as well as students in any year or division can try out except freshman women without upper classmen hours.

## U. of M. Trusts Students; Exams After Graduation

ANN ARBOR, Jan. 12 (AP)—Speeded up for war, the University of Michigan will hold mid-year graduation exercises on Jan. 23, several days before the candidates for degrees will have taken their final examinations.

The ceremonies will honor 829 "candidates," instead of graduates, and the degrees later will be conferred on those who successfully pass their exams.

## Housemothers' Meeting

Rolf Illsley, Ag. '43, will speak on "Alaska" at the meeting of housemothers at 10 a. m. today in room 19, Forestry building.

## THINKIN' OUT LOUD

By Sheldon Moyer

WHEN college students are faced with the problem of doing out their income tax for the past year, then you can be sure that all is not well in this old world.

But that's exactly the problem that lies ahead of a goodly number of students whether they realize it or not. Under the new tax schedule, a college student doesn't have to be a high-salaried executive; all that he has to do is earn \$500 per year and he must file an income tax return to Uncle Sammy, that is, providing he's single. If his gross income was \$1,200 for the taxable year and he was married, living with his spouse the entire time, he also must file returns.

Whether you realize it or not, it doesn't take many pay envelopes during a year's time to be "eligible" for income tax returns. If you only worked part time during the summer or vacations, you might be in the \$500 bracket, or if you averaged \$9.61 per week over the last year, you're in.

One of the segments of Michigan State college that students hear little about is the extension department. The work of the members of this department are spread throughout the state. Whenever a farmer has a problem, he can feel free to enlist the aid of the Michigan State college extension department, for its members are duty bound to use their scientific knowledge for the improvement of agriculture.

The latest achievement of the extension service was the aid given to a farmer in St. Joseph county. The farmer wrote to the college and complained the soil on his 19-acre farm was slowly eroding. What could he do about it? The extension department dispatched several soil erosion experts to his farm. A detailed study was made, and a report completed.

The soil experts concluded that by planting small evergreens on the land, the erosion could be checked. So the extension men went to the trouble of supervising the planting of evergreens. Their job was done now; they had made a scientific survey, a complete report and even assisted in planting the trees.

Now the word comes to us that a farmer in St. Joseph county, with a 19-acre tract that had evergreens planted on it to stop erosion, made a pile of money last month by selling Christmas trees.

## INFORMATION

### A.M.B.S.—

There will be a meeting of the A.M.B.S. (Med-Bios) in organization room 1, Union, today at 7:15 p. m. Members are asked to bring dues and money for pins.

### NAVY CLUB—

The Navy club will hold a meeting tonight in 111 Olds hall. Moving pictures on identification of naval vessels will be shown.

Any ERC members who do not have their identification cards may procure them at the military office in Demonstration hall.

### FARMERS' WEEK—

All students interested in entering a livestock "cating" and showing contest during Farmers' week are asked to be present today at 5 p. m. in 109 Ag hall for the drawing of animals. The animals drawn will be groomed and prepared for the show by their respective caretakers.

### FRESHMAN DEBATE—

Freshman debate meeting will be held today from 7 until 9 p. m. in 104 Union annex, according to J. K. Richards, debate coach.

## Grin and Bear It

By L



"When fixing the clutch, girls, always remember to use a bobby pin or if nothing else is handy a trench out of the box will do."

## In Campus Quarters

By Helen Schmidt and Scottie McNeal

EVERYONE, glowing with holiday spirit (still), has been busy giving jewelry away. The Pi Kaps seem to have opened a marriage bureau plus romance club. . . . Bob Robbins married Mary Ellen Colestock on Jan. 9, while Lee Ross married Ann Bedford on Dec. 28. . . . Pi Kap pledge Bob Blett will take a wife; Sylvia Robertson of Grand Rapids, on Jan. 21.

Dick George, of Blue Key and Excalibur, has given a diamond to Shirley Hommes who attends National College of Education in Evanston, Ill. . . . four Pi Kaps have lost their pins and do know where to find them.

Bill Gates' pin rests with Doris Zens, Kappa pledge. . . . Martha Snow wears Max Bottomley's. . . . Julius (Jute) Hartsema gave his to "Boots" McCann at Hope college, Holland. . . . and Julia Stucky is wearing Jack Foster's.

Bob Vaughn slipped a FarmHouse pin to Ruth Thorburn of Lansing on Christmas eve. . . . the boys went down to Lansing 25 strong to serenade her Monday night. . . . Emery Smith, FarmHouse president, became a benedict over the holidays when he married Ethel Porter of Shelby.

Virginia Bruce, Alpha Gam, wears Jim Simanton's Lambda Chi pin. . . . while Peg Crotty of Lansing has the shining Sigma Chi pin of Johnny Lynch. . . . the boys serenaded her with a flourish and whistle.

Three more Sigma Chi pins have left their original resting places. . . . Bruce Greenman gave his pin to Betty Martin. . . . Jacqueline Scott was serenaded after receiving Ray O. Darling's pin—Jackie is an AOPi. . . . during vacation, George Zimmerman passed his pin to Gerry Peterson.

The Delta Sigs are still passing them out. . . . Zeta Tau Alpha Connie Riesing recently received a Delta Sig sweetheart pin from Gale Sharp. . . . Monday night Larry Leenhouts passed out "El Ropes" to his brother.

### STUDIO THEATER—

Studio theater will hold its organizational meeting tomorrow evening at 7:15 with two short plays for the program under the direction of Pat Tolan and Virginia Knapp. Don Buell, sponsor, has asked old as well as prospective new members interested in acting, directing and stage effects to attend.

Phi Taus after pinning Alice Landke, Richmond.

Take engagements—keep happening. . . . seems to be able to. . . . Bob Raminiski of Lansing a diamond to Carolyn of Jackson. . . . Louis Berg received a ring from Bob Berg, independent. . . . but definitely not least, engagement of Barbara-ton to Ed MacDonald.

The Sigma Glis take pride in announcing that Ramaker, L.A. '43, received jeweled white cross standing leadership, service, character and piety while a pledge of Sigma. That makes him quite a.

Lieut. Thomas M. Gre the U. S. marines, better to State students as Tom '42, former editor of the Michigan State News, was married Patricia Eileen Nicol. The money took place in Va., on Nov. 28.

Initiation lists are being to come in and it might be to explain the fact that unable to include complete as much as we would like the Phi Deltis initiated Sunday and the Sigma Chi through with a list of 19 initiated actives.

LAST DAY

ROSALEND RUSSELL  
My Sister Ellen

STAT

Today's Mat. 3 P. M.—Night

\* STARTING THURSDAY

Hot from the lines zooms the best, most packed drama scared the stars.

—WITH—  
JOHN WAT  
JOHN CARR  
ANN LE

PLAYING TIGER

"All About Dogs"



## Minnesota Favorite in Tilt With Winless State Cagers

Still plagued by one of the longest jinxes ever to descend upon a Michigan State basketball team—a losing streak of six games—the Spartans will square with a favored Minnesota team in Minneapolis tonight. This will be the last of the three-road trip the State five is currently making.

In the other contest the Spartans fell to Great Lakes andquette for numbers five and six of their "streak." This record is the worst start any Ben Alstyne coached team has made. The sad part of the affair is that hope of improvement in the future seems remote.

The 41 to 32 loss administered by the Hilltoppers was the widest margin the Vanmen have suffered by this season with all of their other defeats being by a one, four, or five points count.

Single ray of light after the other contest will be the next game with Dearborn naval.

All men who would be interested in becoming varsity boxing managers and aid with the all-college tournament should see Coach Al Kaval in the Jensen fieldhouse as soon as possible.

During station, a team which would not prove as tough for the Spartans as their other 1942-43 foes.

John Caswood, local boy from Dearborn, took scoring honors in the Marquette game cutting the meshes for nine points. However, tally-making on the Spartans was at a minimum until at least two or three games start hitting, the "streak" steadily grow longer.

Be Changes

No doubt there will be some changes when the Spartans return to East Lansing Tuesday afternoon. Van will have several days with which to work things around maybe in-coming some of the boys who can't make the trip, into the future.

The Dearborn game will be played Tuesday evening, Jan. 14.

Following this the State cagers will again take to the road, meeting DePaul of Chicago in a windy city double header program in the Chicago stadium. The other tilt will feature Great Lakes conqueror of the Spartans last week.

## How About 'Mural' Hockey League?

Why not form an intramural hockey league?

With excellent facilities for skating and all the necessary equipment available, a loop with as many teams as would care to enter could probably be formed without too much trouble, one hockey enthusiast explains.

A part of the present rink on the secret practice football field in the rear of the fieldhouse could be used for hockey. The college has nets, sticks, and pads, which probably could be used by the intramuralists.

The State News-sports department would appreciate it if those who are interested in playing hockey would voice their opinion by mail or in person in the State News office.

## 'Mural' Cagers Look to Opening Contests

Intramural basketball managers of the three leagues are running their teams through workouts this week in preparation for the opening games starting next Monday. Defending fraternity and all-college champion, Alpha Tau Omega, will again be in the favorite role in the first loop.

DZV, independent winner and campus runner-up, will once more put a strong crew on the hardwood this winter, as will the dormitory crown holder, Abbot 13.

## Rifle Team High on Priority List As War Fails to Muss Schedule

## Baseball Writers Choose All-Stars

ST. LOUIS, Jan. 12 (AP)—Featuring seven players selected for the first time, the annual major league all-star team, picked by 260 members of the Baseball Writers' association, was announced today by the Sporting News.

Two of the all-stars, John Pesky and Tex Hughson, had the distinction of being chosen after their first full season in the big leagues.

The lineup and season records: First base, Johnny Mize, New York Giants, .305.

Second base, Joe Gordon, New York Yankees, .322.

Shortstop, Johnny Pesky, Boston Red Sox, .331.

Third base, Stan Hack, Chicago Cubs, .300.

Left field, Ted Williams, Boston Red Sox, .356.

Center field, Joe DiMaggio, New York Yankees, .305.

Right field, Enos Slaughter, St. Louis Cardinals, .318.

Catcher, Mickey Owen, Brooklyn Dodgers, .259.

Pitchers, Morton Cooper, St. Louis Cardinals, 22-7; Ernie Bonham, New York Yankees, 21-5, and Tex Hughson, Boston Red Sox, 22-6.

Transportation difficulties aren't going to bother the Michigan State men's rifle team this winter. No, they're not going to conduct telephone or telegraphic meets as was sometimes done before the war as these means of communication are restricted like travel.

The meets are going to be held by mail, a means very new to sports. Lieut. Homer Morgan of the military department and team coach already has booked matches with clubs as far away as Maine and Alaska including several mid-western teams.

Local meets will be staged with the University of Detroit and the University of Michigan while others on the schedule include the University of California, Texas U., the University of Kentucky, Camp Grant, the University of Maine, and numerous teams throughout the mid-west.

Contests outside of the United States will be staged with the universities of Alaska and Puerto Rico.

Freshman tryouts for the team will be held all this week. Any persons interested should report to the rifle range or see Lieut. Homer L. Morgan, coach, in Dem. hall.

### WOLVERINE PIX

The following organizations will meet in the Little theater, Home Economics building, at the times indicated for their Wolverine pictures:

7 p. m. Epsilon Chi  
7:15 Agronomy club  
7:45 Blue Key  
8 p. m. Excalibur  
8:15 Mortar Board  
8:30 Omicron Nu  
9 p. m. Sigma Pi Sigma  
9:30 Alpha Psi

### CLASSIFIED ADS

#### FOR SALE

FOR SALE—Argus camera, C-2, 3.5 lens. Call E. L. Benton, Ext. 429. 56

FULL DRESS SUIT—Size 40, recently purchased. Call 81261. 56

FOR SALE—One orchid formal. Size 14. Worn only once. Call 81697. 57

#### LOST

BROWN RUBBER—Girl's military boot. Reward. Call 83785 or 52910. 57

HAND-KNITTED—Tan & green wool scarf in Morrill hall. Reward. Call 81439. 57

#### Classified Rates

Two cents per word; minimum charge, 30c; all advertisements payable in advance; no preferred position.  
Union Bldg. Annex, Room 8  
Telephone 8-1511—Business  
Ext. 263

## SPORTS TRAIL

BY WHITNEY MARTIN

NEW YORK, Jan. 12 (AP)—

The major league baseball clubs have been bouncing around like a pinball in their efforts to find suitable training sites in the north, and the way they have been dodging their home towns gives the impression they are afraid to show themselves before the local fans before it is absolutely necessary.

Some of them might be, at that, as if the fans got a preview of a team like the Phils they might be somewhat disillusioned, if possible, and the opening day would find an overflowing crowd, particularly if both customers stopped at too many bars along the way.

### Why Not Stay Home?

Anyway, the first question that pops into the mind when it is known the teams must train in the north is: "Why don't they train in their own parks, then?"

And on the surface it does seem a little silly for a team to pick a site—a comparatively few miles away, where weather conditions are practically identical. The Athletics, for instance, are going to train at Wilmington, Del., and when it rains or snows at Wilmington there is a fair chance it will rain or snow at Philadelphia.

### Used for Football

However, there is an overlooked factor that prompts teams to ignore their own parks

## Japs Fall Back Again in Last Papua Hold

ALLIED HDQ. IN AUSTRIA

LIA, Wednesday, Jan. 13 (AP)—Allied jungle fighters budged the Japanese further back toward Sanananda point—the last spot to which they cling in all the Papuan peninsula of New Guinea—yesterday while fighters and attack planes raided along the trail south of Salamua.

The Japanese at the same time delivered their heaviest bombing raid on Mrauke, colonial administrative center on the south coast of Dutch New Guinea, causing "slight damage" with nine heavy bombers.

when choosing a camp. That is the parks themselves and the effect of the training routine on the playing surface.

Most major league parks are used for football in the fall now, and when football teams get through with them the infields and outfields look like they had been used as a proving ground for tanks. They really get chewed-up.

Consequently, the orchards take a lot of manicuring in the spring, and to try to get them in shape with three or four dozen wild buffalo galloping over them every day would be something of a problem. It would be too much like trying to shine your shoes in a snowstorm.

## News All-College Boxing Tourney Has 40 Entries

Varsity Boxing Coach Al Kaval announced today that 40 men have already signed up and are training for the State News all-college intramural boxing tournament which begins Monday. Kaval added that entries will be accepted no later than Friday, so all you fistful enthusiasts better hurry and get in yours.

Of interest to the boxing fans is the fact that several well-known athletes here will be giving their all in the tourney. Among others will be Mike Schelb, a member of the DZV team, Dick Kieppe and Russ Gilpin, both representing Sigma Nu fraternity.

Schelb, a three-letter man in football and track, reached the finals of the intramural wrestling meet fall term and now he's going to take a shot at the boxing affair.

Kieppe finished a brilliant grid career the past season and is waiting call from the naval air corps, while Gilpin was an outstanding sophomore quarterback last fall.

## Got a Man in Service?

Linn's Has a



# VALENTINE

for him

Mail It Now to Insure  
Delivery by Valentine's Day

OPPOSITE UNION **LINN** CAMERA SHOP

Green and White

## Michigan State Blankets

Monogram ..... \$10  
Seal ..... \$11

100% Wool  
Double Bed Size

## STATE COLLEGE BOOK STORE

DEPT. OF MICHIGAN STATE COLLEGE  
WEST GRAND RIVER AVE.

## CINDERELLA SPIN

JANUARY 16  
DERWOOD CARN'S ORCHESTRA

Tickets at  
Union Desk  
and Dorms  
\$1.50 per Couple



## Math Department Reports Success in Instructor-Borrowing Policy

The cosmopolitan atmosphere around the mathematics department lately is caused by the new "borrowing policy"—a necessity brought about by the war.

Because of so many vacancies in the department, a plea was made to other departments for mathematics teachers—the result is that music, botany, farm crops, English and zoology faculty men are now trying their hand at trigonometry and algebra.

Those teachers from other departments who are cooperating with the math department includes Prof. J. M. Barbour of the music department; Profs. H. M. Brown and S. T. Dexter, farm crops; and Miss Margaret M. Anderson, secretary for the orientation office.

History is repeating itself in the case of Prof. H. T. Darlington, of the botany department, for in World War I he also taught mathematics under Prof. L. C. Plant.

Others are Prof. Harrison Hunt, head of the zoology department, E. P. Lawrence, instructor of English, and R. W. Lewis, instructor of botany.

### Short Course to Teach Industrial Feeding

A special short course in industrial feeding management is offered by the department of institution administration, Home Economics, to prepare people to take positions as managers in industrial cafeterias and lunch rooms.

## Offensive Ready

LONDON, Jan. 12 (AP)—The British eighth army was reported about ready for a fresh spurt toward Tripoli tonight and its Anglo-American and French Allies in Tunisia, and their air forces dealt many and varied blows at the Axis in the Mediterranean theater.

The Morocco radio said strong reinforcements, including tank forces, had arrived in the last few hours to strengthen the forward elements of the eighth army before Wadi Zemzem, 160 airline miles southeast of Tripoli.

If an attack was imminent it obviously was in cooperation with the Fighting French of the mysterious Gen. Jacques LeClerc who were reported within 300 miles of Tripoli after announcing a complete conquest of Italy's Fezzan empire of salt marsh, oases and desert in southern Libya.

## Don Cossacks to Be Here Wednesday

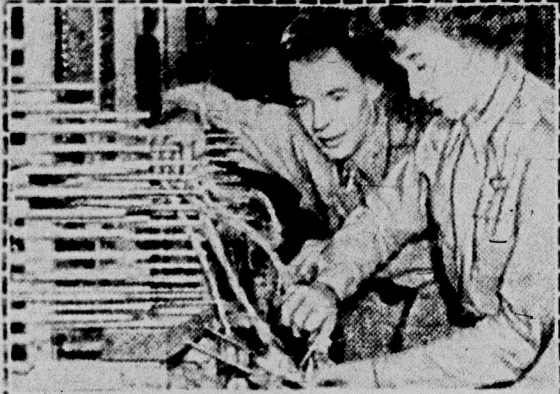


The Don Cossack chorus and dancers under the direction of Jaroff will present a concert of song traditional of the Volga River Don areas when they appear on the M.S.C. stage Wednesday, Jan. 20, in College auditorium, according to S. E. O. secretary of the series.

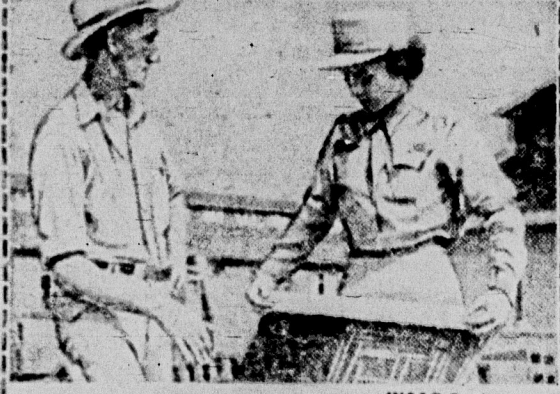
The 34 Russian singers, booted and bloused, were members of the crack cavalry regiment in the days of the czar and now under the same rigid but self-imposed discipline. The Cossacks boast a repertoire of wide variety including songs from the church, campfire, and battlefield.

## U. S. Army Announcement

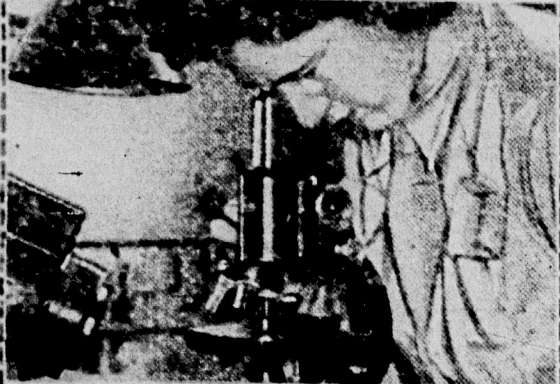
# To College Women in their Senior Year



WAAC learning line testing



WAAC Draftsman



WAAC Laboratory Technician

### WAAC PAY SCALE

Officers	Equiv. Rank	Base Monthly Pay
Director	Colonel	\$333.33
Asst. Director	Lt. Colonel	291.67
Field Director	Major	250.00
1st Officer	Captain	200.00
2nd Officer	1st Lieutenant	166.67
3rd Officer	2nd Lieutenant	150.00
Enrolled Members		
Chief Leader	Master Sergeant	\$138.00
1st Leader	First Sergeant	138.00
Tech. Leader	Tech. Sergeant	114.00
Staff Leader	Staff Sergeant	96.00
Technician, 3rd Grade	Technician, 3rd Grade	96.00
Leader	Sergeant	78.00
Technician, 4th Grade	Technician, 4th Grade	78.00
Jr. Leader	Corporal	66.00
Technician, 5th Grade	Technician, 5th Grade	66.00
Auxiliary, 1st Class	Private, 1st Class	54.00
Auxiliary	Private	50.00

\* To the above are added certain allowances for quarters and subsistence where authorized.



**YOUR** Army has scores of jobs in the WAAC for alert college women . . . jobs vital to the war . . . jobs that will train you for interesting new careers in the post-war world. And here is good news indeed — you may enroll now in the fast-growing WAAC and be placed on inactive duty until the school year ends. Then you will be subject to call for duty with this splendid women's corps and be launched upon an adventure such as no previous generation has known.

New horizons . . . new places and people . . . interesting, practical experience with good pay . . . and, above all, a real opportunity to help your country by doing essential military work for the U. S. Army that frees a soldier for combat duty. These are among many reasons why thousands of American women are responding to the Army's need.

You will receive valuable training which will fit you for many of the new careers which are opening to women, and full Army pay while doing so. And by joining now you will have excellent chances for quick advancement for the WAAC expands, many more officers are needed. Every member—regardless of race, color or creed—has equal opportunity and is encouraged to compete for selection to Officer Candidate School. If qualified, you may obtain a commission in 12 weeks after beginning basic training.

Go to your WAAC Faculty Adviser for further information on the list of openings, pay, promotions. Or inquire at any U. S. Army Recruiting and Induction Station.

**U. S. ARMY**

RECRUITING AND INDUCTION SERVICE

**WOMEN'S ARMY AUXILIARY CORPS**