

## 12 Sororities to Vie for Cup in Annual PanHellenic Sing

By Leone Seastrom

State's 12 national sororities will compete tomorrow in the annual sorority sing for possession of the cup awarded each year to the top performer by PanHellenic council.

At present the sing is scheduled for the band shell, but rising flood waters from the Red Cedar may make it necessary to hold the sing in the College auditorium, Doris Johnson, PanHellenic president and general chairman, said. As previously announced, however, the sing will begin at 6 p. m.

### To Act as Judges

Mrs. D. Hennin from Flint, Harper Stevens and R. W. Swift, both of Lansing, will judge the performances of the organizations on the basis of 100 points. Mrs. Johnson announced. Enumeration will count 15 points, attack and release 15, tone quality 20, rhythm, harmony and balance 15, interpretation 15, selections 15, and appearance 5. Limited to a minimum of 20 and a maximum of 30 women, the following groups will be represented: Chi Omega, under the direction of Betty Gibson, Grand Falls Junior, will sing "X" and a "Horseshoe" and "Through the Years."

### Kappa Kappa Gamma

Kappa Kappa Gamma will sing "Kappa Dream" and "Kappa Kappa Gamma, How I Love You." They will be directed by Genevieve Newman, West Branch sophomore.

Jane Ellen Henkel, senior from Lansing, will lead the Alpha Chi Omegas through "Dream Song of Alpha Chi" and "When Johnny Comes Marching Home."

### Alpha Xi Delta

Alpha Xi Delta, led by Lansing senior, Christine VanderZon, will continue with "In

See PAN HEL—Page 4

## Today's Campus

### ... And the Rains Came

Rain or no rain the State netmen carry on. In pouring rain the Spartans and the Titans of U. of D. stuck it out in one of the few tennis matches ever played under similar conditions. Said Bill Maxwell about the whole affair: "We just got tired of being rained out so we played anyway. I lost six straight games before I learned to scoop the ball out of the two inches of water running across the court."

### ... Rumors Boom

While tongues still wag there will always be business for U. of D.'s rumor clinic, and many of the rumors increase with each telling. Latest one Easy is that students will not be allowed to play cards. Aces in the mixed lounge of the Union any more. To which Union Manager E. G. Foster replies: "There will be card playing in the lounge as long as there is no violation of the rules of no smoking or eating."

## UNDER THE WIRE

**HOT SPRINGS, Va., May 21 (AP)**—Assistant Secretary of State Dean Acheson, visiting the United Nations food conference, assured delegates informally today that a conference soon will be called to deal with the problem of relief and rehabilitation of war-torn areas.

**LONDON, May 22 (AP)**—Heavy Russian artillery barrages along hundreds of miles of the eastern front were announced early today in a Moscow communique which ignored German reports that the Red army already had lashed out in a prelude to offensives in the Caucasus and Orel sectors.

# MICHIGAN STATE NEWS

Daily Student Publication of Michigan State College

VOL. 33Z.332

EAST LANSING, MICHIGAN, SATURDAY, MAY 22, 1943

NO. 139

## Flood Area Spreads Over Six States



Pictured are flood waters rushing over the shoulders of a highway in central Illinois, just southeast of Springfield. Caused by heavy rainfall, the floods have killed 10 persons and left 28,000 homeless this week in the nation.

## Allies Raid Satellites and Destroy 113 Axis Planes for 186-5 Score

By NOLAN NORGAARD

ALLIED HDQ. NORTH AFRICA, May 21 (AP)—More than 113 Axis planes were destroyed by American bombers and fighters yesterday in widespread raids which carried Allied aerial superiority far across the Mediterranean, over the Italian Satellite islands and to an average 90 miles north of Rome on one of the blackest days of the war for the Axis air forces.

Allied loss for the day was one plane.

Powerfully armed United States bombers and swift fighters in "one of the greatest victory days in the history of the strategic air force," as the official version put it.

The blackest day for the offensive German air force was the turning point date of the battle of Britain, Sept. 5, 1940, when at least 185 of Goering's planes were shot down while raiding England, but yesterday's Axis losses of 91 planes on the ground and 22 aloft and now on defense are among the severest for one day in the entire war.

With the two-day score standing at 186 to 5 for the Allies, the strategic air force was showing no signs of letting the Axis catch its breath after the beating which destroyed Axis air power in Africa.

## Sunday Concert by Band to Lead off Heavy Music Schedule For Week

The Music department will have its most heavily scheduled program of the term this week. Starting with a concert tomorrow afternoon by the College band, the schedule will include a presentation of Harp-Organ vespers in the evening, and a concert by the Woman's Glee club on Tuesday evening.

The Michigan State College band will continue its series of Sunday afternoon concerts with a program at 4 p. m. Directed by Prof. Roy Underwood, music department head, the band is presenting its fourteenth annual spring concert series this term.

The program for tomorrow opens with "Marcha 3 de febrero" by Roncal, a Bolivian concert march in honor of the first president of Bolivia. Other selections include "Southern Rhapsody," by Hosmer; "South American Way," by McHugh; Tchaikowsky's "Nutcracker Suite," and "Unfinished Symphony" (1st Movement), by Schubert.

## Tokyo Reports Death of Jap Naval Leader

Man Who Would Dictate White House Peace Dies in Action

By The Associated Press

Admiral Isoroku Yamamoto, the Japanese navy's commander in chief, author of the Pearl Harbor attack and the man who once boasted he would dictate peace terms in the White House, was killed last month in air combat on some far southern front, Tokyo announced yesterday (Friday).

Emperor Hirohito ordered a state funeral and raised him posthumously to the rank of admiral of the fleet. The imperial diet (parliament) was called into session for today to pay its respects. Tokyo broadcast a toll of nationwide mourning.

Despite the details suffered by his command in the Coral sea, off Midway and in the Solomons, Yamamoto was this war's greatest hero to the Japanese people, to whom the defeats were reported as victories.

He probably was the No. 1 enemy of the United States, both in the bitterness of his hate and the damage he inflicted on American armed forces. He was rated Japan's ablest sea fighter. If he died in action, as Tokyo says, he was the highest ranking officer of any of the belligerents to meet such a death in this war. He was 59.

A voice choked with emotion reading the imperial headquarters communique told the nation that Admiral Mineichi Koga, who has been appointed Yamamoto's successor, is now commanding the combined fleet.

## Roosevelt, Churchill Await Recommendations from Staff Chiefs

WASHINGTON, May 21 (AP)—The stage of fateful decisions has been reached in the war strategy conferences. President Roosevelt and Prime Minister Churchill are holding with their military advisers.

Responding to a request for a progress report, Mr. Roosevelt told a press conference today that he and the Prime Minister expected to receive preliminary recommendations tonight from the British American chiefs of staff.

They will study them over the week end, he said, and next week will bring the process of ironing out the kinks and reaching final decisions.

## Red Cedar Flood Will Interrupt Sunday Events

By BETTY JO CORNISH

With skies clearing and fair weather ahead, the Red Cedar river continues to rise and will reach a level of nine feet early Sunday morning, according to predictions of H. M. Wills of the weather bureau.

The rise of the river will make it impossible to hold any activities in or around the band shell this weekend, he said. This means that the Sorority sing will, no doubt, have to be moved to the Auditorium, as will be band concert.

### WAA Trip Cancelled

It was also found necessary to cancel the WAA canoe trip scheduled for the weekend as the group had planned to camp overnight in Okemos park which, as a result of the flood, is under water.

The canoes at the canoe shelter will have to be moved from their present lockers. It will be impossible to rent canoes.

There is a possibility that the baseball field will be flooded but conditions are not serious as no home games are scheduled for the near future. If the field is flooded, Jensen fieldhouse will also be surrounded by water but no damage will be done since the building is completely waterproofed.

### March Flood

Early in March the Red Cedar rose to flood level at eight feet and continued rising until it reached nine feet in East Lansing and 11 feet in Lansing, but no damage was done.

However, the weather bureau reports that the rain cycle has moved eastward and clear weather is predicted.

## U. S. Cleans Up Last Stand of Jap Forces in Battle for Attu

WASHINGTON, May 21 (AP)—With victory in the past, United States troops fought today to mop up the remnants of Japanese forces which for almost a year had occupied the American island of Attu at the western tip of the Aleutians chain.

The first stage of the campaign to throw the enemy entirely out of the western Aleutians was officially described as successful.

On the basis of scanty information here it appeared that the Japanese remaining on Attu were a relatively small force of the 2,000 to 3,500 men stationed there when the American expeditionary force began its conquest of the island 11 days ago.

The remnants, according to the last war bulletin, were entrapped on the rocky headland immediately east of Chicago harbor.

## Comedy to Feature Adventure Series

"Ruggles of Red Gap," the Paramount comedy contrasting the American and English social systems, will be the World Adventure movie to be shown Saturday at 8 p. m. in College auditorium, according to S. E. Crowe, chairman of the series.

The movie will star Charles Laughton, Mary Boland and Charles Ruggles. All men in uniform will be admitted free and students will be admitted by student coupons.

## House OKs Appropriation for Lend Lease Program

WASHINGTON, May 21 (AP)—A \$6,273,629,000 Lend Lease appropriation was passed swiftly by the house today after it was informed that the mutual assistance program, working in reverse, is bringing thousands of tons of food and other supplies to American troops stationed abroad.

## Carillon Program

Denzil Treber, Lansing junior, will present the following program from Beaumont tower at 3:30 p. m. tomorrow:  
Rondo—Rameau  
Gavotte (Mignon)—Thomas  
To the Evening Star—Wagner  
None but the Lonely Heart—Tchaikowsky  
I Dream of Jeanie  
Old Black Joe  
Swanee River  
The Camptown Races  
—Stephen Foster



# MICHIGAN STATE NEWS

Entered as second-class matter at the postoffice, East Lansing, Mich. Office located on ground floor of east wing of Union Building Annex, room 8.  
Published daily except Sunday and Monday mornings during the regular school year and weekly on Thursday mornings during summer session by the students of Michigan State College.  
Member Associated Collegiate Press  
Represented for National Advertising by  
National Advertising Service, Inc.  
College Publishers Representative  
420 MADISON AVE. NEW YORK, N. Y.  
PH. 3-10 • BOSTON • LOS ANGELES • SAN FRANCISCO  
Subscription rates—5c per copy; \$3.00 per year by mail; \$1.50 per year by college carrier to students; \$2.25 per year by college carrier to non-students.

## MEMBER OF THE ASSOCIATED PRESS

The Associated Press is exclusively entitled to the use for republication of all news dispatches credited to it or not otherwise credited in this paper and also the local news published therein. All rights of publication on special dispatches hereinafter are also reserved.

Managing Editor, LEN BARNES  
Editorial Director, ELLIS BRANDT  
Business Manager, JEAN WHITING

Assistant Editors: JERRY TER HORST, NEVA ACKERMAN, BARBARA DENNISON, WINN POTTS, BARBARA HAFORD, Sports Editor, JOHN MARRS, Associate Sports Editor, PAT MCCARTHY, Women's Editor, KAY FRESEMER

## BUSINESS STAFF

Advertising Manager, ART UNDERWOOD, Contracts Manager, BERNICE BOLLINGER, Assistant Business Manager, JANE MILLAR, Circulation Manager, PAUL E. WALKER

Reporters: Joan Meyers, Don Tracy, Leone Senstrom, Peg Middlemiss, Dee Hearings, Nancy Lettwell, Jean Boran, Anne Cowan, Sally Kesselner, Marion Hinkel, Pauline Cookin, Rita Harland, Patricia Craig, Jane Humphreys, Marjorie Johnson, Mary Ross, Blaine Munk, Beverly Thompson

Night Editor, NEVA ACKERMAN  
Faculty Adviser, A. A. APPLGATE

## More Books Are Needed For STARS

IT LOOKS as though Michigan State students are beginning to realize there's a war, but they haven't quite got around to putting forth an all-out effort in that direction. Students who live on the eastern and western coasts came back to Michigan State last fall and were quite surprised at the taciturn, almost isolated view of the war which their midwestern fellows displayed, and the first efforts to promote war projects on the campus last fall were wretched failures.

The war arrived at MSC with a bang with the announcement that the ERCs would leave the campus, however, and now even the dullest coed is precisely aware of the score. However, the Spartan populace has not yet evinced entirely its willingness to work to the limit for the war effort.

Latest demonstration of this attitude occurred when Director S. E. Crowe, coordinator of the STAR program, asked for elementary algebra, trigonometry, geometry, physics, and chemistry texts for use by the STARS in brushing up for tests which they must take while here.

At least 25 such books have come in to this office so far, Crowe reports, which was to him "very gratifying." "We could use quite a few more, though," he says.

There must be a lot more than 25 books falling in the category requested lying idle around the campus. If the entire Allied cause exhibited a slight streak of laziness and unwillingness to sacrifice similar to that which is apparently evinced by the student body the war would be in a sad condition indeed.

## Stalin Hears Roosevelt's Secret Letter

MOSCOW, May 21 (AP)—The long letter, written in English, was translated into Russian on the spot by Foreign Premier Joseph Stalin listened intently to a translator's reading of President Roosevelt's letter to him and then sat down for a talk of more than two hours with former Ambassador Joseph E. Davies who delivered the letter last night.

Stalin listened attentively as the letter was read. When the letter was finished, Stalin smiled, said he would be glad to consider it and would take it up with Davies in a day or two.

## Weekly Letter to Men in the Service

(This open letter to men in the service is a weekly feature of the Michigan State News, describing the outstanding events on campus. Clip it out and mail it to a friend in the service.)

**H**I JOHNNY: Since it's been raining here almost steadily all week, everything and everyone are in a very damp condition, and things have bogged down terribly. The Michigan State-Michigan baseball game scheduled for Wednesday was indefinitely rained out even after fair weather was predicted by the weather bureau.

Job guidance talks were held all week and speakers discussed opportunities, salaries, and positions for summer work.

Heading the Student Council next year will be Gordon Hue-schen, Applied Science sophomore from Pigeon. After a year of pettifog rule, the presidency is going back into masculine hands.

More honors came to 31 students, this time when Phi Kappa Phi, national scholastic honorary, invited them to join its ranks. Students were selected on a strictly scholarship basis.

They kissed 300 airwomen good-bye last night when a dance was held for squadrons A and B—the graduating element of the 310th CTD. These graduates arrived March 28, and sometime this week 300 more will replace them for a full five months' training. The next group is scheduled to graduate June 22.

Sorority songbirds will warble it out tomorrow at 6 p. m. in the bandshell at the annual spring sing. Sororities have been drafting actives and pledges to sing like mad for the past two or three months and results ought to be very harmonious. In case of rain, which seems imminent, the concert will be held in College auditorium.

Well, this is all for now, but not all of the letters, that is if we're all not waterlogged by next week.

Much love,

DEE.

## CAMPUS CHURCHES

By NANCY LONGWELL

### Peoples Church

Dr. N. A. McCune of Peoples church has chosen for his topic this Sunday "Traveling the Christian Way Today." The morning services will be at 9:30 and 11. The evening vesper service at 7 will present a program of harp and organ music.

### First Church of Christ, Scientist

Services for East Lansing Christian Scientists will be held in the Masonic temple at 314 MAC avenue at 11 a. m. tomorrow. Sunday school will be at 9:30.

### College Lutheran Church

"Use It or Lose It" will be the subject of Rev. William Young's College Lutheran sermon at the 10:30 worship service in the State theater building. The Lutheran Student club will meet in the faculty dining room of the Union from 4:30 to 7 p. m. It will be the final meeting of the term and will feature a social hour, refreshments and a special guest speaker whose name has not been announced.

A confirmation service will be held this Sunday at 10:45 a. m. Pastor E. L. Woldi has chosen as his subject "Stand Steadfast."

The Central zone rally of the Walther league will be held at the Trinity Lutheran church in Lansing at 3 p. m.

MIFFLIN AVE. Church of the Nazarene

The Rev. Marvin S. Cooper of Arlington, Va., will again be the guest speaker at the Mifflin Avenue church. He will speak at 11 a. m. tomorrow on the subject "But We See Jesus." Evening services at 7:30 will feature a talk on "The Last Earthly Cry of the Lost Soul."

A mass meeting of interdenominational churches from nearby Lansing will be held at 2:45 p. m. at which Rev. Cooper will discuss "Why the Church Will Survive Her Adversary."

### Wesleyan Methodist

"Knowing Christ" will be the morning sermon for Rev. Royal Woodhead at the 11 o'clock service. The evening meeting at 7:30 will feature the topic "Achieving Faith."

### Canterbury House

Episcopals will attend a Holy Communion service at 8:45 a. m. at 445 Abbot road. Canterbury club will meet from 6 to 7 p. m. Sunday at the chapel.

One \$18.75 War Bond will give an Army enlisted man an overcoat, two woolen undershirts, and a pair of light woolen socks.

CONTINUOUS TODAY 1 to 11 P.M.  
**STATE**  
—LAST TIMES TODAY—  
PHILIP DORN — ANN STEN  
"CHETNIKS"  
Also—News — Cartoon — Novelty  
STARTING SUNDAY \*  
**=THRILLING=**  
**BEYOND WORDS!**  
It will move you more deeply than any drama of peace or war!  
*John Steinbeck's*  
**THE MOON IS DOWN**  
with SIR CEDRIC HARDWICKE  
HENRY TRAVERS  
LEE J. COBB  
BORIS BOWDON  
MARGARET WYCHERLY  
WILLIAM POST, JR.  
20th CENTURY-FOX PICTURE  
ADDED — NEWS — CARTOON

## Grin and Bear It

By Lichty



"My dream is a house with two bathrooms! One for drying my stockings in!"

## In Campus Quarters

By Scottie McNeal and Ro Howland

**A**S TIME Goes By" the men and women of MSC are becoming more and more loyal to the number of pinning seems to increase each week.

Dash Wiertel, former State News columnist and Delta Zeta, is wearing the Lambda Chi pin of Frank Lassing, who is stationed in Nashville, Tenn. Two Phi Deltis are devoid of their pins as a result of irresistible State coeds. Don Rae's pin is resting with Connie Fulton and Chuck Austin's is in the possession of Sue Snadick.

Pat Pattison, who is an active member of the Alpha Phi, for long now wearing Pat's pin. Don Lamont, Sigma Chi, is now at Fort Benning, Ga. passed his pin to Betty of Detroit.

All sororities will have house tonight as they thing each spring term. The Alpha Pns and the Alphas are combining their term parties and probably make things jolly at their houses end.

# Church Directory

<p><b>LUTHERAN STUDENTS AND SERVICE MEN</b> YOU AND YOUR FRIENDS Are Invited To <b>CHRIST LUTHERAN CHURCH</b> (Missouri Synod) 122 So. Pennsylvania near E. Mich. <b>HOLY COMMUNION</b> SUNDAY, MAY 30 Zone Rally of Walther League This Sunday at Trinity Lutheran Church — 3 P. M.</p>	<p><b>FIRST CHURCH OF CHRIST, SCIENTIST</b> East Lansing Masonic Temple, 314 M. A. E. Ave. Sunday School 9:30 A. M. Sunday Services 11 A. M. Wednesday Evening Services 7:30 P. M. Reading Room and Lounge 211 211 Abbot Building, open from 11:30 A. M. to 4:30 P. M. and Sundays from 3 to 6 P. M.</p>
<p><b>THE PEOPLES CHURCH</b> (Interdenominational) Services of Worship 9:30 and 11:00 "THE CHRISTIAN WAY TODAY" And Student Program 5 to 7:15 N. A. McCUNE</p>	<p><b>MIFFLIN AVE. Church of the Nazarene</b> 300 S. Mifflin Ave. C. A. Bruch, Minister Welcome Students and Faculty All Services Sunday School 10 a. m. Morning Worship 11 a. m. Evening Service 7:30 p. m. Two blocks south of Michigan Ave. just inside of Lansing city limits. Take College-Fisher bus to Grand St.</p>
<p><b>WESLEYAN METHODIST CHURCH</b> E. Michigan at N. Magnolia 10:00 Sunday School 11:00 A. M. Sermon Subject: "KNOWING CHRIST" 6:45 Youth Meeting 7:30 P. M. "ACHIEVING FAITH" Royal S. Woodhead, Pastor</p>	



## Kobsmen Face Michigan Normal Nine at Ypsilanti Today; Bernitt to Start

By Pat McCarthy

As compared to last year's meet, which the Spartans captured with the overwhelming score of 102½, there will be only one-third as many men in today's congregation. Only full teams being entered are those in State, Abion and Michigan Normal. Composing the remainder of the 80 entries are Alma Central, Michigan, Wayne university and Western Michigan Normal.

**Strongest Rival**

The Spartan lineup promises to be a highly contested affair, with many of the schools entering men who have consistently broken the 22 foot mark.

With State's lack of outstanding talent in the pole vault, it looks as though this event will fall to Ted Welsh, star vaulter from Michigan Normal.

**Naab Leads Levelin Field**

The Spartans lead a definite edge in the javelin throw with

Although Wayne University and Western Michigan have shared track as a spot for the competition, they will each be entering seven-man teams.

strongest opponent in the field is Bruce Stevens, All-American sprintman. Stevens' best time is a 10 flat count in the 60 and he will be giving States his McCarthy and Jack Steegman a run for their money.

**Amion Hurdler Fast**

## 40 Points Shout Out Over Normal 7-0

DEBBIE MARCUS

## by Carley



## FOR RENT

1. L&L-P. W&L. submitted each. Two	
2. Two. Submitted. info. provided. 10	
3. One. One. info. provided. 22	

WANTED

[illegible]

—

9 - 17  
10 - 20  
38 - 44

12.95 and up

**Jacobson's**  
Open Thursday Evening  
Until 9



## Dorm, Sorority Parties Head Social Calendar for Tonight

Another full weekend was chalked up on the social calendar this week. Two fraternity term parties representing four houses, and a quartermaster corps radio party were held last night.

Alpha Phi, Alpha Omicron Pi, and Williams, Mayo and Campbell dormitory term parties are scheduled for tonight as well as radio dances by Kappa Alpha Theta, Kappa Delta, Zeta Tau Alpha and field artillery.

Prof. and Mrs. E. C. Tabor; Prof. and Mrs. W. E. Reuling; Prof. and Mrs. C. H. Nickle and Mr. and Mrs. T. L. Caniff will be patrons at Campbell dormitory tonight. Joan Dunfee, Rives Junction sophomore, and Margaret McDonel, Lansing junior, are chairmen from North and South Campbell respectively.

Patrons at Williams dormitory will be Prof. and Mrs. Karl Dressel and Mr. and Mrs. S. S. Paulley, according to Marge Clubb, Des Moines, Ia., junior, chairman from North Williams and Barbara Quayle, Oxford freshman, South chairman.

Joan Campbell, Rapid City junior, and Beverly Jewett, Mason sophomore, chairmen from West and East respectively, have announced Prof. and Mrs. W. L. Mallmann, Mr. and Mrs. R. J. Coleman and Mr. and Mrs. S. D. Gralak as patrons for the Mayo term party.

Mr. and Mrs. J. B. Harrison will be patrons at the Alpha Phi term party, according to social chairman Jeanne Moffett, Detroit junior.

Kappa Alpha Theta will have Mr. and Mrs. H. H. Humphreys and Prof. and Mrs. C. W. Barr as patrons, social chairman Marge Hovey, Detroit junior, announced.

Patrons listed for Kappa Delta are Prof. and Mrs. C. F. Cairry and S. A. Gallacher. Alice Stevens is in charge. Prof. and Mrs. T. H. Osgood and Prof. and Mrs. P. C. Morrison will be patrons at the Zeta Tau Alpha radio party of which Joan Woodruff is chairman.

Doris Baguley, Lansing freshman, is in charge of the Alpha Omicron Pi dance at which Prof. and Mrs. V. A. Freeman will be guests.

The field artillery dance will be held tonight and not last night as was previously announced.

## INFORMATION

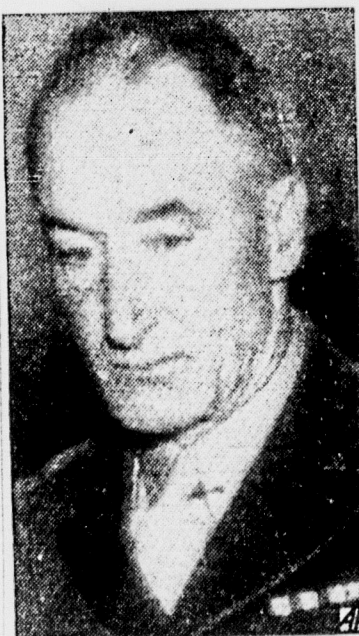
### HILLEL—

Aircrew students, STARS and students will sponsor a discussion on post war planning, to be held in Peoples church tomorrow. The discussion will be followed by a supper.

### CHRISTIAN FELLOWSHIP—

Spartan Christian fellowship will meet at 5 p. m. tomorrow at 435 M.A.C., with Ralph Tenney as guest speaker.

## New Tank Leader



MAJ. GEN. ALVAN C. GILLEM (above) of Nogales, Ariz., has been appointed acting chief of the armored force to succeed Lt. Gen. Jacob L. Devers, now commanding general of American troops in the European theater, the war department announced.

## CONCERT

(Continued from Page 1)

Harp of St. Cecilia" by Auguste Wiegand, "Large from the New World Symphony" by Anton Dvorak, and "O Lord Most Holy" by Cesar Franck. The Vesper program is the first recital of its type to be given this year.

The Women's glee club, under the direction of Josephine Kackley, of the music department, will present its first concert of the year in the Music auditorium on Tuesday at 8 p. m.

Phyllis Lightfield, junior piano major from Minneapolis, and school music major Virginia Siegmund, Buffalo, N. Y. senior will be featured as soloists.

## Orbeck Withdraws as Assistant Dean

Increased teaching responsibilities in the English department were given as the reason for the change in title of Dr. Anders Orbeck, by College Secretary Karl McDonel at the meeting of the State Board of Agriculture Thursday.

Dr. Orbeck's title was changed from associate professor and assistant to the dean of Liberal Arts to that of associate professor of English.

Civilian per capita food consumption in 1943 is expected to be 6 per cent below the average consumption in 1942.

## Yankees Blaze U-Boat Yards on North Sea

LONDON, May 21 (AP)—American flying fortresses smashed their way unescorted through heavy concentrations of enemy fighters and anti-aircraft fire today to attack the submarine yards at Emden and Wilhelmshaven, Germany's North sea naval bases, in separate daylight raids.

"Despite very strong enemy fighter opposition and intense flak," an 8th U.S. Air force communiqué said, the twin assaults "were pressed home and a light weight of bombs" was dropped.

Twelve of the big four-engine bombers failed to come back from the dual operation to smash the vital German U-boat construction yards at the two port cities. Emden is about 330 air-line miles from London and Wilhelmshaven is about 40 miles farther.

Many of the enemy fighters which challenged the well-armed American heavyweights were destroyed in the numerous combats which ensued, the communiqué said. Returning fliers said they fought a terrific battle with 100 to 150 enemy planes.

Invest in Victory—Buy War Bonds and Stamps.

## PANHELLENIC SING

(Continued from Page 1)

Thoe I Cherish" and "I Love the Rose of Alpha Xi."

"Day and Night" and "A Toast" are the selections picked by Alpha Omicron Pi, which will be under the direction of Nanette Hegelman, junior from Detroit.

### Sigma Kappa

Pat Stone, Chicago junior, will direct the Sigma Kappas in "Dark Eyes" and "Sorority Medley."

Zeta Tau Alpha, under the direction of Elaine Simon, Wyanotte freshman, will sing "Zeta Anthem" and "College Medley." "K D Girl" and "When They Turn the Lights Down Low" are songs picked by the Kappa Deltas, who will be directed by St. Clair Shores freshman Barbara Fearnside.

### Delta Zeta

Delta Zeta, under the direction of Grace Allen, junior from Detroit, will present "Homeland" and "Delta Zeta All for Thee." Linda Weber, Buffalo junior, will lead the Alpha Gamma Deltas in "Alpha Gam Serenade" and "When the Lights Go On Again."

"When Evening Shadows Fall" and "Moonlight on the Campus" are the songs chosen by Alpha Phi. They will be directed by Dorothy Horn, East Lansing junior.

### Kappa Alpha Theta

Kappa Alpha Theta will conclude the program by singing

"Theta Prayer" and "Amen, the Beautiful." The Theta will be under the direction of Fisher, Evanston, Ill., sophomore.

The judges' decision will be given shortly after the singing and the cup awarded the winner. Permanent possession of the sorority must take place in three consecutive times. The year's winner was Alpha Omega and in '41 the winners were taken by Kappa Delta.

## Breaks in Levees Spill Floods Over Farms Along Mississippi

By The Associated Press

A dozen breaks in levees along the Mississippi and Wabash rivers spilled waters over thousands of acres of fertile Midwestern land yesterday (Friday) but several cities from the threat of immediate inundation.

With more than 100 levees sons homeless and losses mounting hourly, returning danger zones by ear and while soldiers and civilians worked dikes against the of cresting currents.

At a "Paper Goes to War" exhibition in London, the prints required to produce Merlin Rolls-Royce engine weighed 325 pounds.



**At Last!**  
**Spring Is Here**  
and with it  
**Lots of New Merchandise**

## MILITARY SUPPLIES

Military Button  
Polishing Kit  
49c

Shoe Daubbers  
10c and 15c

Stiff Bristle  
Clothes Brush  
29c

Pal Hollow Ground  
Razor Blades  
10 for 25c

Sun Tan  
Flight Caps  
75c

Regulation  
Military Ties  
39c up

G. I. Shoe Laces, pr. 5c  
Shoe Shine Cloths 9c  
Triple Shoe Polish 15c  
Gillette Shave Cream 15c  
Collar Stays 9c and 19c  
Saddle Soap 24c and 29c  
Dogtag Holders 19c

Canvas Carry All Bag  
16 inch Zipper opening  
\$1.95

White Quarter  
Sleeve "T" Shirt  
49c

Air Force Embossed  
Stationery  
79c

Air Force  
Pillow Covers  
78c

## SPORTS EQUIPMENT

Spalding Superba  
Tennis Racket  
\$2.95

Tennis Racket  
Presses  
49c

Spalding AA  
Soft Balls  
75c

Wilson Tennis  
Balls 50c ea.  
Limited 3 to Customer



## NOW IN —

SLIDE RULES

ENGINEERS

DRAWING EQUIPMENT

STATIONERY

**Campus Book Store**

RIGHT ACROSS FROM THE UNION

**VANDERVOORT'S**

● Military Supplies  
East Lansing Store

● Sports Equipment  
E. Grand River Ave.