

From The President

welcoming the members of the Class of 1951 and other students. It is pleasant to reflect that Michigan State is better equipped than ever before to serve the needs of those who have chosen to gain their higher education on this campus.

It remains to be done to complete the current building program, and the beauty of the campus is somewhat below additional standards as the result of construction activity. But more classrooms and laboratories and living space are ready for your use than any previous class year found.

Accomplishments to date in providing more buildings afford some relief from overcrowded conditions which prevailed throughout the 1946-47 college year, and of the amenities and conveniences to which Michigan State college students traditionally accustomed, more than your physical comfort is at stake in this building program — the new classrooms and laboratories enable Michigan State to give you a better education under conditions conducive to thinking, learning, and for what we can all be thankful.

JOHN A. HANNAH

Conditions will continue to improve as the months go by. By the time you have completed your first year with us, new science building, the electrical engineering building, physics and mathematics building, and the agricultural engineering buildings should be ready for your use.

At I would not have you think that we measure success achievement here at Michigan State by material standards. Bricks and stone and mortar alone may build a great university, but they alone can never build a great one. The greatness of an educational institution is measured by the quality of its faculty, the quality of instruction, the character of its students, the underlying philosophy of its administration, and the basic reason for its being, among other things.

Michigan State college is better equipped than before. Its faculty includes some of the most eminent men and women in their fields and is being strengthened daily. The quality of instruction improves as rapidly as improvements can be effected. Thanks in good part to the example and inspiration of the veterans among us, the standard of classroom achievement have never been higher. As the philosophy of administration, it continues to be based on the theory that college training is intended to equip young men and women to live more interesting, happy, and useful lives.

You are beginning your work at Michigan State college at a most propitious time, so far as your own futures are concerned. There was never a greater demand for college-trained men and women than there is today, and that demand likely to continue far into the future, for we are a long way from making good the shortage of trained people resulting from the war. In agriculture, in teaching, in home economics, in business and public service, in veterinary medicine, in engineering, in journalism, in personnel work, in industrial management—indeed, in almost all fields of human endeavor—exciting things are happening. Both at home and in the world at large, America has work for intelligent, trained, poised, capable young people.

As new members of the student body at Michigan State college, I urge you to read this special edition of the Michigan State News carefully in order that you may adapt yourselves quickly to life on the campus. You are welcome here, and I want you to feel from the start that you are a part of Michigan State college. It has a great deal to offer you, and I repeat my advice to every entering class: What you get from your college experiences will be in direct ratio to what you put into it.

Keep your work and your play in the proper proportions. Be friendly with friendliness, exercise tolerance, and cultivate your understanding, and your years here will be among the happiest and most useful of your lives.

JOHN A. HANNAH

Campus Police Protect State's 2,500 Acres

A police force of seven regular officers with 16 student officers and three cars guard the 2,500 acres that form Michigan State college campus in East Lansing. In addition to protecting the buildings and farm acres of the college, the police have full jurisdiction over traffic on campus and student driving.

Michigan State students are prohibited from driving a car on campus until it is registered with the campus police.

Student driving permits in general are kept to a minimum and only given students with a physical disability upon the recommendation of the college health service to students who commute from two or more miles, or for business use.

Turned students living with their families may also get permits. Penalties for driving on campus without a registration are progressively severe, leading to conferences with the Dean of Students.

Students must park in the regular student parking lots by the auditorium or by the tennis courts.

Student driving permits may be revoked for violations of the traffic or registration rules. Students and faculty members registering their cars will receive distinctive tags.

WELCOME FRESHMEN

Michigan State News

Michigan State's Daily Student Publication

VOL. 36 334

EAST LANSING, MICHIGAN — FRIDAY, SEPTEMBER 5, 1947

No. 18

Record Fall Enrollment Forecast

TODAY'S CAMPUS

Alma Mater

Near to the heart of every student is the Alma Mater. Join your fellow students when they sing it. Close besides the winding

Cedar's
Sloping banks of green
Speeds thy campus, Alma
Mater
Fairer ever seen
Swells the chorus, let it
echo
Over hill and dale,
Hail to thee, our loving
mother
MSC, all hail

Fight Song

Favorite song at football and basketball games is the fight song.

Smash right through that
line of blue
Watch the points keep
growing
Spartan teams are bound
to win
They're fighting with a
vim
Rah! Rah! Rah!
See their line is weaken-
ing
We're going to win this
game
Fight! Fight! Rah! team
fight!
Victory for MSC

Number Please

Although some 15,000 students will attend Michigan State this year, locating one another isn't as difficult a task as might be imagined. Each year a directory is published listing the name, school, class, home address and East Lansing address of every student at MSC.

MSC Shadows

A favorite sentimental song with State students is MSC shadows. The tune is original and the words are:

MSC we love thy shadows
When twilight silence falls
Flushing deep and softly
paling
O'er ivy-covered walls
Beneath the pines we'll
gather
To give our hearts to thee,
Sing our love for alma mater
And thy praises, MSC

Four New Buildings Will Be Completed For Fall Term Use

Multi-million Dollar Program Approaches Halfway Mark

The opening of fall term will find four of 11 new buildings on campus ready for student use and the \$9,000,000 building program over half completed.

The new men's dormitory, Snyder-Phillips hall, will be opened completely for fall term with a housing capacity of about 1,000, half in each side.

Snyder hall was occupied during the spring term but Phillips was not completed until late in the summer.

Landon hall, new women's dormitory, will be fully completed for this fall with room for 350 coeds. Some coeds moved into the building last winter when the building was partially completed but now the full capacity will be utilized.

Classroom Building
The \$1,360,000 classroom building will also be ready this fall and is expected to take much of the load of other classrooms. It will seat 3,250 students in its 50 odd classrooms.

See CONSTRUCTION, Page 5

Football Rally Will Highlight Game Spirit

Michigan State's fall football season will be informally opened Friday, September 26, the day before the Michigan game, with a giant pep rally.

The rally, an event of traditions with Spartan students, will bring together all students on a "Beat Michigan" basis.

The pep rally will start at 7:30 p.m. in front of the west entrance to the Union.

Head Cheer Leader, Rolfe Young, Football Captain Bob McCurry, Coach Bugge Mann and other members and cheer leaders will contribute to make the rally one of the biggest ever held on the campus.

Cheers, songs and a snake dance will round out the program which is under the direction of Don Geiss, Cleveland Heights, Ohio sophomore.

Following the rally, Union board will hold the first regular dance of fall term in the Union ballroom.

64 Students 4,000 Freshmen Enter MSC Add To Totals

Tuition Free

The faculty committee on scholarships announced recently that 64 freshmen with the class of 1951 would enter college this fall as recipients of alumni undergraduate scholarships.

The awards, according to Prof. A. J. Clark, chairman of the committee, amount to a waiver of tuition each term of the freshman year and have a value of \$141.

These awards are renewed at the end of each three terms to those students who maintain at least a 1.000 scholastic average. For four years, the scholarships will have a value of \$564 each.

Each spring under the guidance of Glen O. Stewart, director of alumni relations, an alumni committee is selected in each of the 42 senatorial districts of the state. The district committee carries on a selective contest and not more than six candidates are picked to

See SCHOLARSHIPS, Page 3

New Dormitories Lift Limits on Enrollment

More than 15,000 students are expected to provide a record enrollment at Michigan State college at registration this fall, Registrar Robert S. Linton has stated. The highest previous total was 13,500.

The number will include almost 1,000 freshmen. The actual number of freshmen students is hard to predict, Linton asserted, since many

admitted without passing the substance measure, applications dropped considerably, Linton said.

About 3,800 women are expected to enroll. Admittance for women students has been restricted since the war because of housing difficulties. Additional housing facilities have been provided by the erection of a new women's dormitory, Landon hall, and changing Wells hall from a residence hall to a women's dormitory.

Veterans will still comprise more than half of the enrollment. More than 8,000 veterans were enrolled at Michigan State last spring, Linton said. The figure this fall will be the same, perhaps a few hundred higher.

Registration of both freshmen and upperclassmen will be completed in time for students to attend the Michigan-Michigan State football game at Ann Arbor on Sunday, September 21.

The average size of freshman students is expected to be lower than last year, when most of the incoming freshmen were veterans under the GI bill. This year enrollers include several hundred men and women just out of high school.

ISA Will Sponsor Forum On Student Activities

Offering freshmen a chance to hear how Michigan State is run, the ISA student activities orientation program will bring noted campus leaders before a freshman audience Thursday, Sept. 25 from 7 to 8 p.m. in the band shell.

Sponsored by ISA, the Independent Student's as-

sociation, the program will feature college leaders in and out of the Wolverine MSC yearbook. Young will talk on "How to get on" and lead a few cheers.

The program will be emceed by Don Geiss, Cleveland Heights sophomore. Geiss will also give a general talk on the organization and activities that go to make up

See ISA, Page 3

NOTICE

New veteran students enrolling this fall are advised to have enough money to carry them the first sixty days. Guy F. Palmer, manager of the Detroit VA office announced.

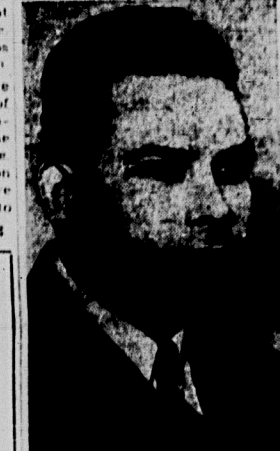
This fall will see veterans' enrollment in Michigan hitting a peak of 30,000 or 10,000 over last year's total.

Every effort will be made to pay the allowances as quickly as possible.

See SCHOLARSHIPS, Page 3

Freshman Week Calendar

8 p.m.	Women's discussion	Little theater, Home Ec
	Cooperative house	
	Town Girls	Union room porch
	Off Campus	101 Home Ec bldg
	Dorm	Each resident hall
8 p.m.	President's reception	Union ballroom
TUESDAY, SEPT. 23		
6 p.m.	YWCA YMSA banquet	Peoples church
8 p.m.	YWCA YMSA dance	Union ballroom
WEDNESDAY, SEPT. 24		
7-9 p.m.	WAA student night	Women's Gym
8-10 p.m.	Visit residence	All over
THURSDAY, SEPT. 25		
8 p.m.	Canterbury club	Canterbury house
	Episcopalians	445 Abbott road
8 p.m.	Christian Science Org.	206 Morse and
8 p.m.	Christian Student foundation	Peoples church
8 p.m.	Gamma Delta, Lutheran	Tower room, Union
8 p.m.	Hill foundation	Hill house, corner
8 p.m.	Lutheran get-together	Hillcrest, Gr. Riv.
8 p.m.	Newman club, Catholic	Org. room, Union
8 p.m.	Spartan Christian fellowship	Little Theater, Home Ec
		Union foyer
FRIDAY, SEPT. 26		
6 p.m.	YW YM freshman camp	at Waterloo Rec. area
	Return Sunday eve	
7 p.m.	Fresh Alumni Scholarship	Tower room, Union
7-9 p.m.	Pep rally	Front of Union
9 p.m.	Union board dance	Union ballroom
SATURDAY, SEPT. 27		
2 p.m.	Michigan-MSU football	Ann Arbor
9 p.m.	All-college dance	Auditorium



ROBERT S. LINTON
Registrar

veterans applied for entrance when they thought Congress would pass an increase in student entrance payments. When Congress

Traditions Improve College Living

Spartan Spirit Reigns At Michigan State

Traditions play a large part in the collegiate life at Michigan State. They form an unwritten code that makes life at State pleasant and inspiring.

The traditions of MSC are not written down. They cannot be found in the library or engraved on a plaque for posterity. They are found in the minds and hearts of the students and alumni of this college.

There is no compulsory enforcement of traditions, no police force makes you abide by the traditions. But you will find that after spending a few weeks on the campus of your college that you will want to uphold these codes of behavior, for they make Michigan State the college that it is.

State is known for its spirit of friendliness, for its traditional "Hi" and smile that greet you as you walk to and from classes. It is the friendly spirit that makes Michigan State more than a collection of buildings and students. The friendly spirit makes

MSC a true university and good influence on the life of its students and the history of the state of Michigan.

The Red Cedar river with its ducks and canoeing is more than a tradition, it is an institution. Cutting the campus in half, it affords entertainment during the warm months for canoe and picnic enthusiasts and during the winter is used for ice skating.

It is a tradition that only engaged couples may sit on the engagement bench which is located on the campus north and slightly east of Beaumont tower.

Women, you will find two areas traditionally restricted to you. One is the Smoke Shop and the other is the lower lounge of the Union, where no women may sit. Both of these places are "for men only."

Another tradition aims at keeping the campus in its present beautiful condition. Michigan State students do not walk on the grass. Sidewalks are provided in generous numbers and offer adequate walking space.

One tradition that has been reinforced by ruling of the State Board of Agriculture is the no smoking idea. MSC students do not smoke on the campus north of the Red Cedar, except in the Union.

Women students are traditionally not really coeds until they have been kissed in the shadow of Beaumont tower at midnight.

These traditions, big and little, are more thoroughly adhered to than some rules. These traditions are a part of college life at State. It is the privilege and duty of all new students to maintain and perpetuate them.

Beaumont Tower

"As a man soweth, so shall he reap."

Inscribed upon Beaumont tower, outstanding campus landmark, is part of this quotation. On these words we, as students, should find our creed, for in college especially are the gains of a venture dependent on the amount of work invested in it.

To attain and keep a passive attitude toward your college, always getting and never giving, is the easiest way to get the minimum value from your college education.

Join in as many activities and events as you can. This does not mean be a "joiner." It means become a part of the things that make up campus life. Use the classroom as a testing place for your ideas, joining in class discussions. Enjoy the concerts and programs that are planned for the entertainment and education of the student body.

Make acquaintances widely, make friends discriminately and make a study of perfecting those friendships. Join some group whose interests are akin to yours and broaden your knowledge of the subjects.

By doing these things, you will find at the end of your four years that along with your diploma you will have reaped countless experiences and remembrances that are much more valuable than a sheepskin.



BEAUMONT TOWER

AWS Provides MSC Coeds With Student Government

Self government among the women students of Michigan State college has reached a high level with the work of Associated Women Students.

AWS is divided into two sections, the judiciary legislative board and the activities board. Virginia Gilhooly, East Lansing senior heads the judiciary legislative board while Judy Longnecker, East Lansing senior directs the activities board.

The judiciary-legislative council establishes interpreters and enforces the rules which govern Michigan State coeds. The duties of the judiciary-legislative board include to hear and judge disciplinary cases and consider judicial matters to have jurisdiction over house rules, to interpret AWS rules, and to verify and approve house reports.

The judiciary legislative board meets regularly every week. Its members are made up of representatives from each women's department. The members of the judiciary-legislative board are: Virginia Gilhooly, East Lansing senior, president; Judy Longnecker, East Lansing senior, vice president; and Mary Louise Barrett, Detroit senior, secretary.

The activities board's duties are to plan, execute and plan the various activities on campus.



VIRGINIA GILHOLEY

to prepare election schedules for the various organizations. The activities board holds meetings during alternate weeks. Its members include the presidents of most of the women's organizations on campus.

A part of women's governing organization at State is the honor system set up in the dormitories. Established two years ago, the system makes each coed responsible to herself for high actions. Student counselors living on each floor of the dormitory give aid in these matters.

Point System

Another function of AWS is the points supervisory system. It was established to guarantee a more equal distribution of responsibility in women's activities and to protect a coed from assuming more responsibility than she is capable of handling.

Each position of responsibility on the campus is given a certain point rating. The total points a coed may have may not exceed 60 if she is a senior, 50 if she is a junior, etc.

The membership of AWS itself is composed of all the women students on campus. The objectives of the association are to further the spirit of campus co-operation and friendship, increase the individual sense of responsibility, and supervise all matters pertaining to social conduct of the women students at State.

64 Enter On Scholarships

Continued from Page 1

A comprehensive examination of the 64 students who entered on scholarships is being held at the State campus.

An important meeting of all freshmen holding alumni undergraduate scholarships will be held from 7 to 8 p.m. Wednesday evening, September 10, in the lower room, 10th floor of the Union building. Prof. A. J. Clark and Glen O. Stewart will speak.

During the past year, students attending Michigan State on alumni undergraduate scholarships maintained outstanding records, exceeding the average of the entire student body in high school and college.

ISA

Continued from Page 1

The ISA is a student organization which will be held at the State campus.



FRESHMEN!

FOR DINING OUT
WE RECOMMEND OUR CAFETERIA
OF FINE FOODS
FOR AN AFTER HOURS SNACK
VISIT OUR BAKE GOODS DEPARTMENT

The Hunt Food Shop

135-139 East Grand River Ave.
Phone 82517 - 82518

Married Housing Fails To Meet Fall Demands

800 Applications Not Filled As Students Still Apply

Demand for married student housing continues to exceed supply as the fall term approaches, according to Starr H. Keesler, director of student housing.

With 450 trailers, 1,040 barracks apartments, and 30 families living in the brick apartments, applications for housing are still being received for fall term.

To date there are 600 applications over for the barracks apartments and 150-200 over for the trailers. It is anticipated that the applications over the available amount will increase as fall term nears.

The assignments for fall term housing are now in the mail to students. Keesler explained that of the families living in the brick

apartments, the majority will remain for fall term. The greatest turnover is for the type of housing in the trailer unit.

Must Have Child

E. F. Foster, manager of dormitories and food service, explained that married students must have one child before they are considered for two-bedroom barracks apartments.

Continuing the explanation of assigning housing, Foster said that of the families living in the brick

be available when the project is terminated. The housing units are being operated by MSC for the Federal Housing Authority under the terms of a standard contract. The college, according to the contract, provides specified improvements to the site, such as water lines, electric lines, sewers, sidewalks and roads. Rental rates as established by the Federal Housing Authority depend upon the type of unit and the income of the family renting the unit.

MARJORIE DEE SHOP

(Opposite State Theater)

GIFTS — of course —

AND FOR THE

FRESHMAN STUDENT

SUCH THINGS AS

SHEETS TOWELS NAME TAPES

Hours 10:30 A.M. — 5:30 P.M. Closed Mondays

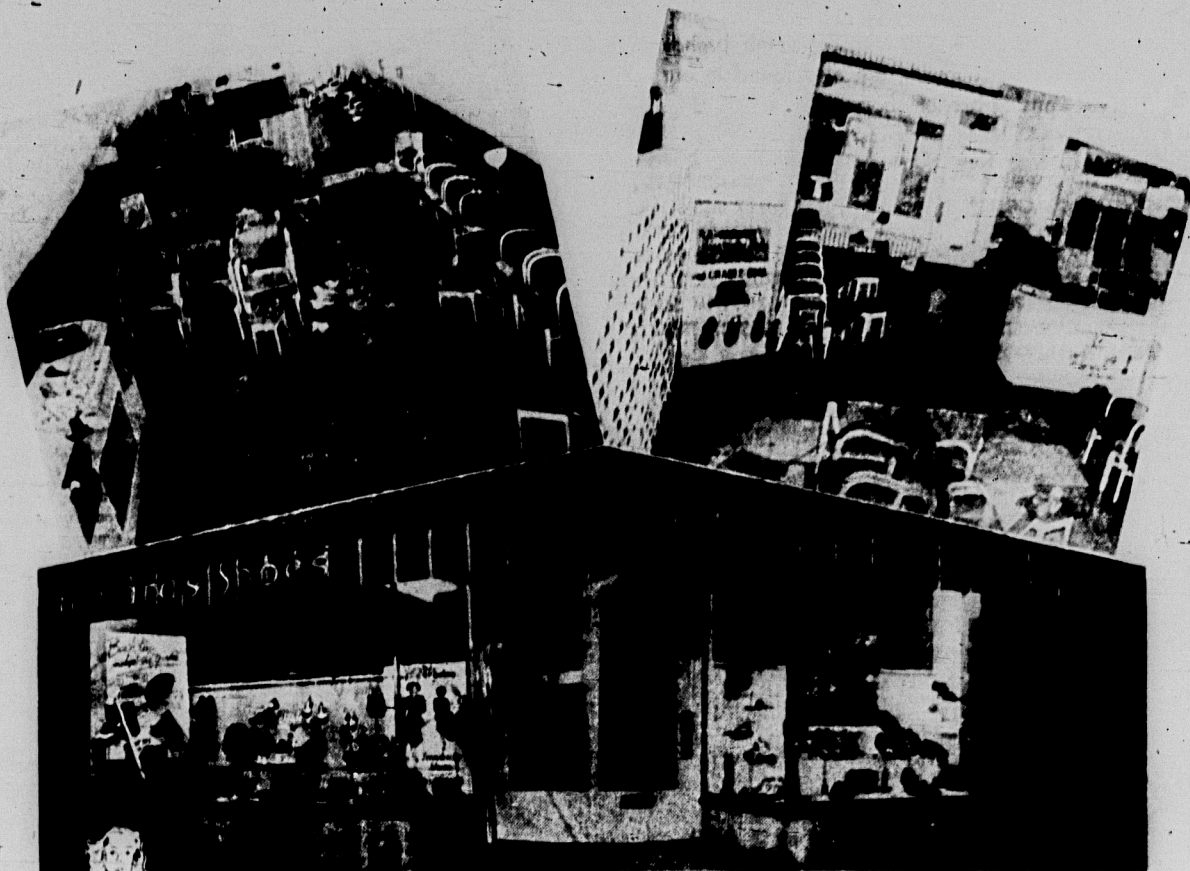
226 — 228 Abbott Road

SHEPARD'S

HI THERE FROSH!

Here's a bit of 'double-talk' about a

big 'double store' all ready to serve YOUR footwear needs



WANT SOMETHING SLICK TO KICK AROUND IN?

Then Make Your First Stop . . .
SHEPARD'S CAMPUS SHOE STORE

(See diagram below)

. . . and flick your toes into a pair of jauntily styled shoes that make for glamour . . . but SOLID! On the campus or off.

For the Sleek Chic Chick —

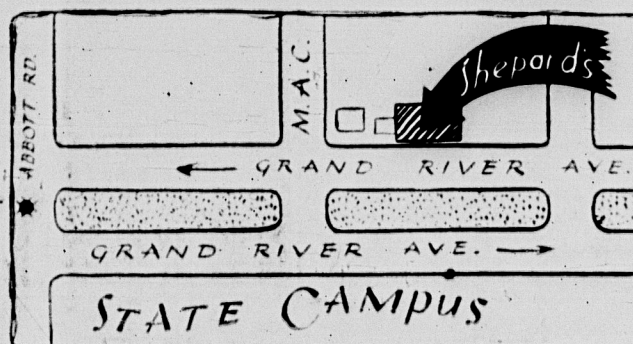
with a knack for keeping nifty, a Cinderella dream department that's right on the style beam — but DEF with the sweetest, neatest tricks in footwear — FRIENDLY "Sports," Edwards Saddies, College Chums, Treadeasy's, Fortune casuals — all fit something super and the colors are divine! ALSO . . . lots of heavenly leather such as purses, purses, slippers, cosmetics, et cetera, et cetera, etc.

And for You, "Jackson" —

a strictly groovy department crammed with spiffy, punky shoes by FREEMAN, Talented Master-Fitter, Bootmaker Guild and King's Grant. Slippers mixed with dash in a style and line to take you to ROGER! That's for ME! You'll see our SLICKLY FOR MEN department.

Amo, Amas, Amat—

Be the Smartest in Your Class in a pair of Shepard's Shoes

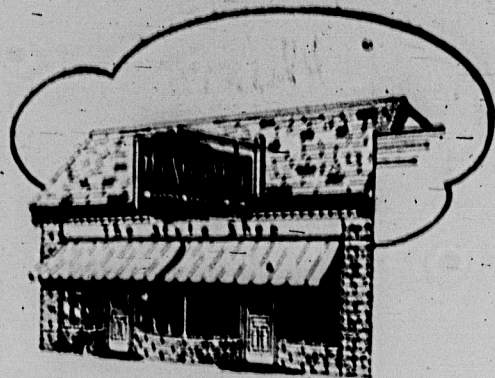


Before Buying Always
Shop the Windows at

**Shepard's
SHOES**

317-319 East Grand River Avenue
Opposite MSC Campus
East Lansing

CLOTHES FOR THE SOPHISTICATED SCHOLAR —



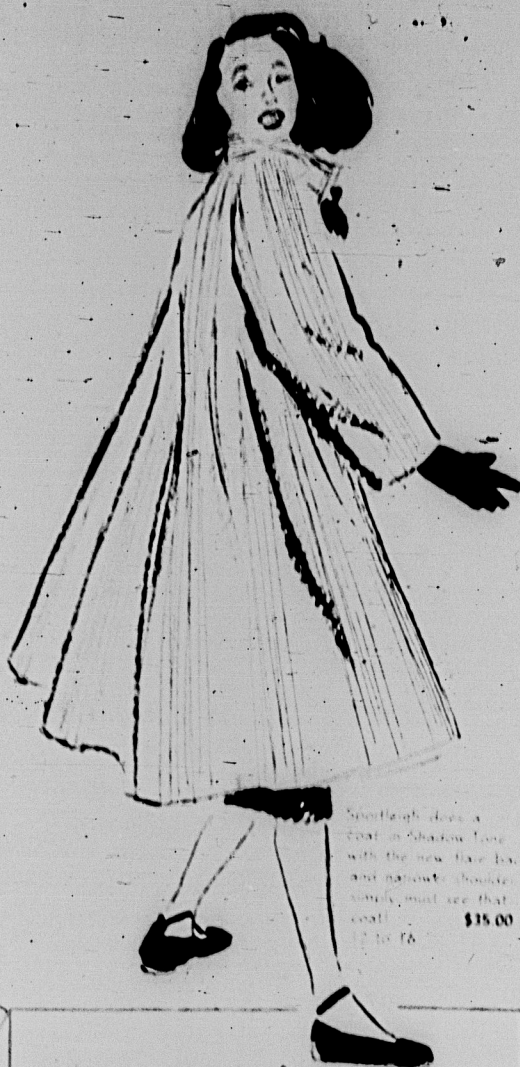
121 EAST GRAND RIVER

The Style Shop

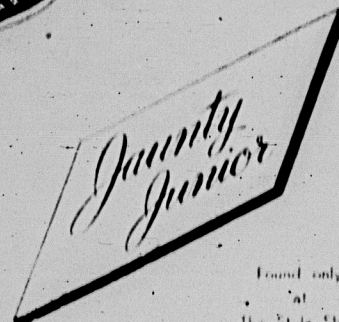
Leading & foremost fashion institutions for over 10 years continue to be the vanguard for outstanding quality, style, elegance. Famous name brands such as the following are also found in our East Lansing branch store:

ESSENCE OF JEWELRY
ESSENCE OF COSMETICS
ESSENCE OF PERFUMES
ESSENCE OF HAIR
ESSENCE OF SKIN
ESSENCE OF EYES
ESSENCE OF LIPS
ESSENCE OF NAILS

VENUE BELLS
VENUE GLOVES
VENUE HATS
VENUE SHOES
VENUE BAGS
VENUE JEWELRY
VENUE COSMETICS
VENUE PERFUMES
VENUE HAIR
VENUE SKIN
VENUE EYES
VENUE LIPS
VENUE NAILS



Sparklegh does a coat in shadow tone with the new flare back and narrow shoulder. Simply must see that coat! \$35.00



Sparklegh

Found only at The Style Shop 121 E. Grand River



HI-HO JUNIORS...

It's yours and ours — probably you saw it in Glamour with its full flare back. Peter Pan collar and clever half-moon pockets. Sizes 7 to 13. \$45.00



Jaunty Junior Suits....

Yes you saw them both on the cover of Charm. One is wine, the other a plaid, both in covert cloth. \$45.00

Sizes 7 to 13

All-Climate Plaid Coat....

and is it ever cute — it's featured in August Seventeen. Hood is detachable — it, like the coat is fully zipped lined. Styled by Hi-Ho Jrs. Sizes 7 to 13. \$69.75

Basic College Moves Into Fourth Year At State

Revision In Lit. Arts Department Marks First Course Change

The first complete course revision in the Basic college has taken place in the department of literature and fine arts after three full years of operation, Prof. John F. A. Taylor, head of the department, has announced.

The Basic college was approved by the State Board of Agriculture, governing body of Michigan State, in the spring of 1944. It aims at giving students an opportunity to share in certain basic training no matter what their major is.

The newness of the system has been off and students may be one of studying under a system that has been tried and proven, Dean of Basic College Howard C. Mather stated.

The change in the lit and fine arts department is the first alteration in the course and went into effect at the start of summer term. Previously a term was arranged in three sections: English literature, music and visual art. A minimum of one lecture was given during each three week section.

The new arrangement for the course includes just one section throughout one term. A minimum of 12 and a maximum of 30 lectures are to be given in each course.

Courses have been thoroughly studied by the department to change the contents of the course.

Scholarships

(Continued from Page 3)

Adeline Nelson, Ithaca, Reynolds

Andrew Beckey, Constantine

James Elmer Bitch, Elkton

Margaret Dorothea Johnson, Detroit

Louise Lester, Holland, South

Harvey Robert, Boston, Pontiac

Steve Brannan, Lansing, Dol

Wesley Burch, New Haven, William

Camp, Marshall

Winston, Stuart, Carpenter

Josephine, Joseph, Alice, Casler

Marionette, Ray, Rose, Cottrell, MI

Phyllis, Carolyn, L. Coulter, West

Branch, Ellen, Carl, Grand Rapids

Gary, Crawford, Livingston, Lou

ise Beth, Dubois, South Ste. Mar

Virginia, Carol, Dodge, Saranac

Joanne, Carol, Dorothea, Mid

land, John, Paul, Elhardt, Baroda

Leanne, Jane, Fox, E. Grand Rap

ids, Audrey, Helen, Frappier, Clio

Carol, Babcock, Gage, Wixom

Patricia, Gidon, Detroit, M. Elaine

Hall, Lansing, Ronald, Harper

Grand Rapids, Rose, G. Holt, Ke

wadon, Peggy, Heaton, Irwin, Ish

perning, Robert, Jenkins, MI, Mor

ris, Frances, Ann, Johnson, White

hall

Glenn, Knott, Horton, Marianne

Kingsbury, Cassopolis, Ken, Klyn

stra, Grand Rapids, Anita, M. Kow

ki, Chassell, Carol, Jean, Kwantz

Wallace, Lois, Elizabeth, Lajpim

on, Calumet, Colores, Dorothy

Lopez, South Lyon

Robt, MacRae, Detroit, Athena

Macrae, E. Lansing, David, H.

Monroe, Williamston, Jacqueline

Outman, Flint, Larry, Lynn, Olin

stead, Coldwater, Richard, Dean

Peterson, Cadillac

John, Stewart, Prudmore, Fern

dale, Lawrence, Ryel, Milford

Glen, Oscar, Saffelmeier, Detroit

Donald, Walter, Schreyer, Frank

emuth, Patricia, Seibert, Detroit

Donald, Eugene, Sells, Monroe

Patricia, A. Sterling, Escanaba

Lois, Jean, Snyder, Quinnesic

Bessie, Edith, Speer, Sagin

aw, Thomas, B. Stevenson, Stur

ge, John, Andrews, True, Armada

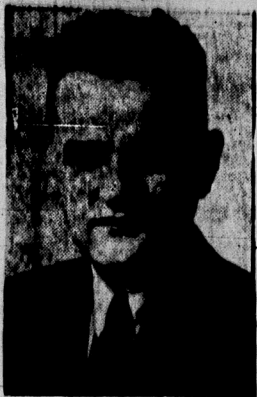
Jane, Ellen, Tubbs, Saginaw, Rus

sell, S. Walters, Livingston, Rose

Maria, Webb, Hale, D. Jacques

Werning, Oshtemo, Mary, Anna

Yon, Newport



Howard C. Mather
Basic College Dean

aiding both the student and in

struction.

Curricula Listed

The curricula for Basic college students includes a minimum of five comprehensive core courses, exploratory and elective courses taught by staff members of the various schools, military science for non-veterans, and physical education.

Since many students entering Michigan State have already chosen their vocation, an opportunity is offered for them to become affiliated immediately with this field and with Basic college.

Camps Listed

A student thus doubly enrolled will not only take the required basic courses but will also start courses specified by the school of his choice.

A comprehensive examination will be given at the conclusion of each basic core course.

Normally students take the examination upon completion of three terms of the work but many students, desiring to speed up their college course are permitted by the board of examiners to take the exam at the conclusion of one term or two.

11 Buildings Add Space To Campus

Meade Structures On South Campus Ease Room Pinch

Michigan State's classroom shortage will be still further alleviated by the construction of 11 new buildings on the south campus.

The buildings are neat, white structures, known as Meade buildings. They are being built by the Federal Works Administration.

The new buildings will add a total of 91 new classrooms, 90 offices and 244 desks to the college office and classroom facilities.

South Of Red Cedar

The building are built in two rows with a road between them. They stretch from the river to Shaw Lane, just north of the judging pavilion.

Space in the new buildings has been officially allocated. James Denison, administrative assistant to the president, has announced.

From north to south, going away from the river, the buildings will go to the departments of landscape and grounds, journalism, business administration, and printing, drawing, written, and spoken English, art, and poultry.

In addition to the new building space in the adjoining steel classrooms has been re-allocated. Two of the new groups to move in will be the veterans' administration and the literature and fine arts department.

Footbridge To Connect

The college has appropriated \$125,000 for the land, construction of water mains, heating facilities, walks and the footbridge.

The expenditures of the FWA have not been announced.

The building will be connected with the main part of the campus by a footbridge which will carry utility lines and foot traffic to the south campus.

Both the buildings and the footbridge will be ready for use by the start of fall term.

The building were originally part of the army ordnance depot and came to MSU from Okla.

Michigan State's New Science Building



Shown above is the architect's drawing of the new science building now rising just east of the dairy building. The four story building will be 700 feet long and will cost an estimated \$1,000,000. It will contain lab and offices for the

departments of botany, entomology, zoology and geography. The contract for the building has been awarded to the Heniger Construction Co. of Lansing.

New Constructions To Alleviate

Acute Shortage Of Classrooms

(Continued from Page 1)

The new classroom building is named Berkey hall after William Berkey, recently retired member of the State Board of Agriculture, governing body of MSU.

The building will contain four floors of classrooms and will have storage spaces in the basement.

This building is expected to eliminate the need of classes after dark. For the past year MSU's class schedule has run from 8 a.m. to 10 p.m. because of the shortage of classrooms.

Home Management Lab

Also ready for use this fall will be the home management laboratory.

It is located beside the new classroom building and will provide two practice houses for home economics students.

Natural Science Building

The million dollar natural science building is located east of the dairy building. The framework has been completed and brickwork is being finished but it is not expected to be ready for use until the fall of 1948.

The natural science building will house many of the departments now occupying buildings in "dormer row," some of the oldest buildings on campus. Botany, entomology and zoology laboratories

and classrooms will occupy the building.

Physics Building

Construction is proceeding at a rapid pace on the million dollar physics and mathematics building on the eastern section of the campus.

The two-story structure will house the departments of physics, astronomy and mathematics. At present the math department is housed in Merrill hall.

The present physics building is the oldest building on campus. It was originally built as a chemistry lab and has been remodeled many times since. It is alleged to have more steps than any building on campus because there are so many different levels in the structure.

Ag Engineering Structure

The first academic classroom building to be built south of the

Red Cedar is the agricultural engineering building. This building is expected to be completed some time this year.

The estimated \$475,000 structure will be located on what was the site of the horse barn.

Electrical Engineering

The rapidly rising electrical engineering building will be the first college structure to face the Red Cedar. It is located between the present workshop and the river.

Costing an estimated \$750,000, the building is expected to be completed by next fall. It will be three stories high.

Removal of the electrical engineering department from its present quarters in Olds hall of engineering will make additional space available for the civil and mechanical engineering departments.

Full-Time Counseling Service Aids In Student Guidance

This year will mark the second time in the history of the Michigan State that a full time counseling staff has been available to the student body for guidance and advice. Counseling Director Paul Dressel stated.

The staff of the counseling center consists of 12 trained counselors as well as assistants in the testing room and clerical assistants necessary for handling the tests, scores, records, and other details involved in counseling.

The counseling staff will be located on the South Campus.

Basic college students who have not made a definite choice of a major field are assigned directly to one of the counselors until a definite selection of course has been made.

This enables the counselor to give special help by use of vocational information, aptitude tests, and frequent conferences.

Ruth Donnelly Shop

Distinctive Apparel

LANSING

93927

TO THE FRESHMAN WOMEN:

We welcome you to Michigan State college and to Lansing. We invite you to stop in at the Ruth Donnelly Shop often. You will find our specialty is in fitting you in all the best and most distinctive wearing apparel. There are junior sizes, 7-17, misses sizes and half sizes. Whatever the college girl needs in clothes, we have.

Waiting to serve you.

THE RUTH DONNELLY SHOP

UNION MEMORIAL BUILDING

WELCOMES

All New Students To Use Its Facilities. These Include:

The Grill

The Cafeteria

The Hearth Room

The Bookstore

The Barber Shop

The Desk

The Lounges

WAIT!

Don't buy your bedspreads, drapes, or rugs until you get to college. Be satisfied and choose from our complete stock.

Edington Rug Co.
422 S. WASHINGTON
LANSING

Traditionally Yours . . .

THE 1948 WOLVERINE

SAVE MONEY AND SIGN UP FOR YOURS AT FALL TERM REGISTRATION. EACH TERM THE PRICE INCREASES
—SO DON'T WAIT TO BUY THE FINEST WOLVERINE EVER TO BE PRINTED.

EDITOR — ROLAND YOUNG

OFFICE — 2nd FLOOR OF THE UNION
PHONE — EXT. 273 OR 278

BUSINESS MANAGER — MARGO GREEN

BUSCH

201 S. WASHINGTON AVE., LANSING

An old MSU institution, BUSCH, INC., welcomes you and promises to fix your watch, repair your pen and even sell you an engagement ring if you perchance desire one while attending school.

Our goods and services are at your disposal throughout your college years and after.

Marty Busch

Pres., Busch Inc.

Class of '38

600 Big Sisters To Aid New Women Students

Town Girls Sponsor Tea For New Local Coeds

Organized to promote school spirit, the Big Sisters of Michigan State University will open the year with a tea for new women students. The tea will be held at the home of the Big Sisters, 1000 E. Michigan, on Friday, September 11, at 2 o'clock. The Big Sisters are a group of senior women who sponsor new students and help them adjust to college life. The tea will be sponsored by the Big Sisters of Michigan State University, Inc., and will be held at the home of the Big Sisters, 1000 E. Michigan, on Friday, September 11, at 2 o'clock. The Big Sisters are a group of senior women who sponsor new students and help them adjust to college life.

Upperclass Coeds Will Offer Help To Newcomers

By CAROLYN KARNER

Six hundred women returning to MSU have volunteered to be Big Sisters for the incoming freshmen women. These Big Sisters are to give questions and help the new women in any way to become adjusted to college life.

The Big Sisters of Michigan State University, Inc., is a group of senior women who sponsor new students and help them adjust to college life. The tea will be sponsored by the Big Sisters of Michigan State University, Inc., and will be held at the home of the Big Sisters, 1000 E. Michigan, on Friday, September 11, at 2 o'clock. The Big Sisters are a group of senior women who sponsor new students and help them adjust to college life.

The Big Sisters of Michigan State University, Inc., is a group of senior women who sponsor new students and help them adjust to college life. The tea will be sponsored by the Big Sisters of Michigan State University, Inc., and will be held at the home of the Big Sisters, 1000 E. Michigan, on Friday, September 11, at 2 o'clock. The Big Sisters are a group of senior women who sponsor new students and help them adjust to college life.

The Big Sisters of Michigan State University, Inc., is a group of senior women who sponsor new students and help them adjust to college life. The tea will be sponsored by the Big Sisters of Michigan State University, Inc., and will be held at the home of the Big Sisters, 1000 E. Michigan, on Friday, September 11, at 2 o'clock. The Big Sisters are a group of senior women who sponsor new students and help them adjust to college life.

The Big Sisters of Michigan State University, Inc., is a group of senior women who sponsor new students and help them adjust to college life. The tea will be sponsored by the Big Sisters of Michigan State University, Inc., and will be held at the home of the Big Sisters, 1000 E. Michigan, on Friday, September 11, at 2 o'clock. The Big Sisters are a group of senior women who sponsor new students and help them adjust to college life.

The Big Sisters of Michigan State University, Inc., is a group of senior women who sponsor new students and help them adjust to college life. The tea will be sponsored by the Big Sisters of Michigan State University, Inc., and will be held at the home of the Big Sisters, 1000 E. Michigan, on Friday, September 11, at 2 o'clock. The Big Sisters are a group of senior women who sponsor new students and help them adjust to college life.

The Big Sisters of Michigan State University, Inc., is a group of senior women who sponsor new students and help them adjust to college life. The tea will be sponsored by the Big Sisters of Michigan State University, Inc., and will be held at the home of the Big Sisters, 1000 E. Michigan, on Friday, September 11, at 2 o'clock. The Big Sisters are a group of senior women who sponsor new students and help them adjust to college life.

The Big Sisters of Michigan State University, Inc., is a group of senior women who sponsor new students and help them adjust to college life. The tea will be sponsored by the Big Sisters of Michigan State University, Inc., and will be held at the home of the Big Sisters, 1000 E. Michigan, on Friday, September 11, at 2 o'clock. The Big Sisters are a group of senior women who sponsor new students and help them adjust to college life.

The Big Sisters of Michigan State University, Inc., is a group of senior women who sponsor new students and help them adjust to college life. The tea will be sponsored by the Big Sisters of Michigan State University, Inc., and will be held at the home of the Big Sisters, 1000 E. Michigan, on Friday, September 11, at 2 o'clock. The Big Sisters are a group of senior women who sponsor new students and help them adjust to college life.

The Big Sisters of Michigan State University, Inc., is a group of senior women who sponsor new students and help them adjust to college life. The tea will be sponsored by the Big Sisters of Michigan State University, Inc., and will be held at the home of the Big Sisters, 1000 E. Michigan, on Friday, September 11, at 2 o'clock. The Big Sisters are a group of senior women who sponsor new students and help them adjust to college life.

The Big Sisters of Michigan State University, Inc., is a group of senior women who sponsor new students and help them adjust to college life. The tea will be sponsored by the Big Sisters of Michigan State University, Inc., and will be held at the home of the Big Sisters, 1000 E. Michigan, on Friday, September 11, at 2 o'clock. The Big Sisters are a group of senior women who sponsor new students and help them adjust to college life.

The Big Sisters of Michigan State University, Inc., is a group of senior women who sponsor new students and help them adjust to college life. The tea will be sponsored by the Big Sisters of Michigan State University, Inc., and will be held at the home of the Big Sisters, 1000 E. Michigan, on Friday, September 11, at 2 o'clock. The Big Sisters are a group of senior women who sponsor new students and help them adjust to college life.

Sororities Plan Late Rushing

Greek Groups Hampered By Enrollment Limits

Despite the damper on enrollment of women students, Michigan State's 15 sororities are making full plans for the year's rushing activities.

Latest developments show that formal rushing will be held the first week of winter term.

To be eligible for rushing, a coed must have been in attendance at State for at least one term and have attained a C average or higher.

During formal rushing, all women eligible and interested must appear upon request at the rush board. Following the rush board, rushing moves into the informal rushing stage, which is checked by a formal rushing board and a rushing board.

The parties and open houses are planned so that the coeds will get a chance to acquaint themselves with the members of the sororities.

The parties and open houses are planned so that the coeds will get a chance to acquaint themselves with the members of the sororities.

The parties and open houses are planned so that the coeds will get a chance to acquaint themselves with the members of the sororities.

The parties and open houses are planned so that the coeds will get a chance to acquaint themselves with the members of the sororities.

The parties and open houses are planned so that the coeds will get a chance to acquaint themselves with the members of the sororities.

The parties and open houses are planned so that the coeds will get a chance to acquaint themselves with the members of the sororities.

The parties and open houses are planned so that the coeds will get a chance to acquaint themselves with the members of the sororities.

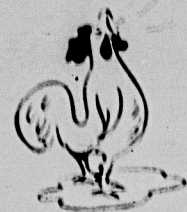
The parties and open houses are planned so that the coeds will get a chance to acquaint themselves with the members of the sororities.

The parties and open houses are planned so that the coeds will get a chance to acquaint themselves with the members of the sororities.

The parties and open houses are planned so that the coeds will get a chance to acquaint themselves with the members of the sororities.

The president of Panhellenic Council, Omega Psi Chi, Alpha Gamma Delta, 120 Bailey, Alpha Omicron Pi, 205 M.A.C., Alpha Phi, 610 M.A.C., Alpha Xi Delta, 140 W. Grand River, Chi Omega, 230 Oakhill, Delta Gamma, 277-1011, Delta Zeta, 293 Alden road, Kappa, 510 M.A.C., and Zeta Tau Alpha, 207 Hague.

Give Your Worry-Bird A Vacation



Don't fret trying to close your trunk!

Stationery — Cosmetics
Michigan State Souvenirs
Hosiery

CAMPUS 5 & 10

COMPLETE FOUNTAIN SERVICE

BREAKFAST—7:00 a.m. to 10:30 a.m.

DINNER—11:00 a.m. to 2:30 p.m.

CAMPUS SPECIAL
Hamburg, French Fried, Cakeslaw — 35c

AFTERNOON SPECIALS—

COFFEE, SANDWICHES, MALTED MILK, SANDWICHES, COFFEE

MARRIED STUDENTS
YOUR OWN STORE
CONVENIENTLY LOCATED
FOR DAILY SHOPPING

RED CEDAR CO-OP
STUDENT OWNED AND OPERATED

Next to the Student Union
Across from the Student Union

Phone 3-3111

Our products are returned to you in the form of patronage
Refunds paid quarterly

You'll Need
THE
KERNEL
SEE PAGE 10

SELLHORN'S
CORNER OF MICHIGAN AND HARRISON
EAST LANSING

35 YEARS IN ONE LOCATION
AS YOUR ASSURANCE
OF GOOD SERVICE

TRAILER COACHES BOATS MOTORS
and 2,000 other items to choose

USE OUR BUDGET PLAN

Two more pay more and often less

SELLHORN'S

SANDY'S

Welcome You FRESHMEN and Upperclassmen

HOURS: 7 A.M. — 11 P.M.

Restaurant Style

LOOK FOR OUR

CHIEF'S SPECIAL



Breakfast — Lunch — Dinner

GOOD FOOD
ORDERS TO
SUIT YOU



STEAKS
BARBEQUED
SPARERIBS
SPAGHETTI

Meet Your Friends

OR TAKE A DATE



SODA FOUNTAIN

Everybody Meets At **SANDY'S**

College Styles Reflect Changes

Coed Wardrobes Offer Variety, Color, Taste

By JOAN TRAMERMAN

Just about now that frenzied "what do I take to college" look comes across the brow of the college coed. Every year something new is added and you wonder if it will suit the campus wardrobe.

One of the newest styles out is the hooded, full back top coat. Definitely right for the west and tear given at school. It leaves plenty of room for sports jackets underneath, and takes away from that over-stuffed look.

The hood does a double duty job. It takes the place of the old time head scarf and also the snugly to keep the winter winds out. When the snow starts to fall it will prove most useful.

The bright bold prints of these top coats will make all eyes turn right to you. The classic polo coat with belted back and pearl buttons is in the lead though, as usual.

Rumor has it the college girl is dressing up, and it looks as if it is all true. Blue jeans and "jalopy" sweaters seem to be taking the back door. The sweaters now are snug and short instead of long and boxy. They are just right for classes or the casual movie date. A perfect combination is the soft cashmere pullover and cardigan of matching colors.

You'll find that most of your class mates are now donning shiny jackets and you'll go to the head of the class. Any color is the right one in the blouse field, from white down to freeman red. With your blouse a bow will top things off. The kind of bow you tie around your neck, not waist.

Skirts are getting straighter and definitely longer. Besides looking more trim they're a blessing when you're in a rush for an eight o'clock and both irons at the dorm are in use—no pleats to worry about.

The colors are better yet—new blue gray, rust and regency blue. What an outfit you'll have with the long sleeve, belted blouse, showing black tie under a Peter Pan collar, and a straighter than straight skirt. It gives that trim, working girl look and who says any state coat isn't a working girl?

By the way, cashmere skirts are reaching an all time high along with the brighter blue better blouses.

For Dress Up
For your freshman week tea and dress up dates, veils or wood beanie are perfect. Neckties are going up and skirts are going down. New full skirted versions of the shirtwaist dress with round collars and stud buttons are just

right. Smoke gray and Pullman green are two colors you won't want to miss.

Along the dressier little satin and velvet and giving the crepe competition. Any tea or party will honor the full drapes of the side and loose flowing sleeves.

As for formals, shoulders are here as well as covered in a sleek dress. Ribbon and plaid buffets with hinged or swishing skirts are a highlight in any evening. Deep soft velvets and billowy nets are still as good as they ever were. Long tight fitting evening coats in bright colors, warm and good looking, are among the latest in smartness.

Eyes Down
The shoes that are walking away with the titles are low to the

ground and steady. Either the long back or closed back shoe with a French buckle stand the test of looking from the Andromeda to the Womans' pen and then to the points east or west.

The buckled side shoe, leather or antique and will also help you take the campus in your stride.

For dress, soft full leather on the sporty style or platform pumps are best. You may have heard that that stage across the aisle has coming on again in high or medium heels and baby doll pumps are making a comeback. Black and brown are still the main color in color but light and lighter is always fun to have.

Tips from any motion department include the up-to-date story on accessories. Earrings are plentiful and tend towards heavy silver or gold. Neckties are still on the choker style or have the beehive look.

Handbags are getting smaller and the shoulder strap bag with subtle stitching and leather "buff" closing is popular.

Gloves are the casual one but the string type. They are something you'll find handy and

warm. Mittens and pigskin gloves are tucked in a special rack of that trunk also.

Hats are "as you like them." As narrow as a bill can be of genuine and wide according to your taste.

Long coats or feather cuts are also governed by your taste. Hats are on the small order type with stitched bands or a wrap of silk.

So, find your much needed fitted or wrap back raincoat over your shoulders, check to see if you packed those pocket pushers and start off for MSU. With these few helpful hints if a sure bet you'll wear well.

PATRONIZE STATE NEWS ADVERTISERS

COLLEGE RESIDENCE REQUIREMENTS



"Rose Garden"

American Decors, elegant and very attractive. Ready-made, durable, light in color and finish. Not too formal, every thing in the room is full of life and color. Adaptable to every college room. Be the first to see it at the college.

\$9.95

"Lily of the Valley"

A colorful spread with white, lilac of the valley, scattered against a background of soft pastel colors. Bates spreads with matching drapes. Two of full sizes.

\$6.95 each

"Chrysanthemum"

A new, attractive, floral design spread with matching drapes. Bates spreads with matching drapes. Two of full sizes.

\$7.95 each

"Tomorrow"

Decorative spread with white, as bright as the "Tomorrow" spread with matching drapes. Bates spreads with matching drapes. Two of full sizes.

\$9.95 each

113 South Washington

MILLS DRY GOODS Co.

Lansing, Michigan



well
schooled
in
charm

Back-to-class
Fashions
by
MAURICE

205 N. Washington Ave.
Lansing

WELCOME —
FROSH.

CARR'S CAFETERIA

For The Best In Foods
and Fountain Service

ACROSS FROM THE UNION BUILDING

There's a New Girl on Campus

A girl with the new long-line look

You'll spot her in a twinkling, silhouetted against the Chapel steps, or thumbing through indexes in the library . . . her plaid skirt has the longer length, her clever suits are gently accented by rounded hiplines . . . all as much a part of campus life as sorority teas and football games.



Westberry zip-in-lined classic coat, Jullhard gabardine, in Chukker Brown, Field Green, Sand Beige, or Black. Sizes 12 to 20. Coast Salon.

59.95



Plaid to plain suit, pleated skirt, in wool flannel, brown, navy or green, sizes 10 to 18. Sports Shop.

39.95



Feminine low-trim blouse of rayon crepe, white only, sizes 12 to 18. Sports Shop.

4.95



Plaid wrap-around skirt, and classic soft-as-down twin sweaters. Skirt in red plaid, sizes 12 to 18. Sweaters in aqua, pink or white, sizes 34 to 40.

Sweaters 8.95

Skirts 12.95



Figure fitting Seamprufe slip, tailored in white. Sizes 32 to 40. Intimate Apparel.

3.00



Cowhide leather over-shoulder bag, saddle stitched, key lock. Adjustable strap. Blue, or natural. Accessories.

8.95



Classic wool French flannel robe, satin trim, tri-effect pockets, in fuchsia, blue, or navy. Sizes 12 to 20. Intimate Apparel.

19.95



Classic saddle shoes in brown and white, or black and white by Sandler of Boston.

7.50

Jacobson's
East Lansing

College Daily Offers Fun, Top Lecture-Concert Artists Work, To New Students Booked For 1947-48 Season

Staff Meeting For Freshmen Scheduled During First Week

The Michigan State News will begin its second year of publication as a full size eight-column daily this fall. Appearing every morning except Sunday and Monday, the State News brings its readers complete coverage on the activities of 15,000 students.

Over 1,000 faculty members, more than 100 clubs and student organizations, as well as sports, editorials and pictures and features.

National and world news in news and pictures appears through the cooperation of the Associated Press, the world's largest news-gathering agency. The State News is one of the few college newspapers which belongs to the Associated Press.

Editorial Staff

The organization which makes the paper possible is entirely student owned and controlled. Heading the organization is the managing editor who co-ordinates the duties of the editorial and advertising departments. The latter department is run by an editor and an advertising manager. The other departments, which are the circulation department, which is the circulation department, which supervises the delivery of the paper to readers on 15 routes in the East Lansing area. Several avenues are thus open to the student who wants a taste of newspaper life. There's the editorial side of the paper — reporting, writing, and editing. On the other hand, experience can be gained in selling and writing advertising and in delivery and circulation problems.

Openings For Freshmen

Many positions will be open to freshmen this year in all departments. For those who keep at it, it can make good, high-salaried positions in the future. And at the same time many of its former

See STATE NEWS, Page 13

Wolverine



ROLIE YOUNG
Editor



MARGO GREEN
Business Manager

Wolverine Begins Job On '48 Book

Will Take Pictures At Registration

Even before the 1947 Wolverine had begun to roll off the presses, the new staff had begun to work on the 1948 Wolverine. With Michigan State growing at the rate it is, a year seems hardly enough time to cover all the activities of its students.

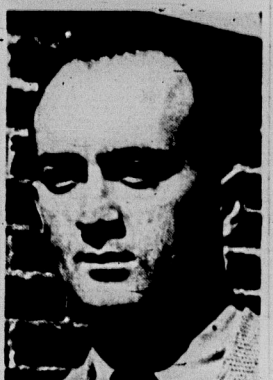
Margo Green, and Rolie Young, business manager and editor, respectively, have been contacting photographers, engravers, printers and cover manufacturers during summer term.

The theme and purpose of the Wolverine is to present the yearly story of Michigan State college, with its growing student and faculty population, the expansion in campus buildings, and the life of Spartans in their surroundings.

In an effort to get a picture of every student in the 1948 yearbook, photography apparatus will be set up at registration, so that every student who wants his picture in the yearbook will have it taken as soon as he completes registration.

The 1948 yearbook is scheduled for distribution during June week of the end of spring term.

Spartan



CON WILLIAMS
Spartan Editor



GRANT TURNBLOM
Business Manager

SECTION 2 FRESHMAN ISSUE MICHIGAN STATE NEWS Friday, September 5th, 1947

Greeks See Biggest Rushing Program

Inter-Fraternity Smoker To Open Fall Activities For 17 Houses

With peak enrollment expected this fall, fraternities on the Michigan State campus are looking forward to the biggest rush program in State's Greek history.

Formal rushing will begin with an interfraternity smoker

in the Union ballroom on Thursday, Oct. 2. The purpose of the smoker is to acquaint new men on campus with fraternity members and to allow fraternity members to become acquainted with them.

According to John Omer, Grand Rapids senior president of the interfraternity council, each fraternity will be represented by several members, who will be grouped about a table containing information on the respective fraternity. Data will be available to interested men in the form of a booklet published by the interfraternity council entitled, "The Greeks Have A Word For You."

Booklet Tells Story

Beginnings of fraternities, their history and the aims of fraternities are some of the features of the booklet. Further information can be obtained from the office of Tom King, counselor of men.

At the smoker, name cards will be passed out at the door to be worn by freshmen and the active. All freshmen are invited to attend to become familiar with fraternities at State.

After the IFC smoker, fraternities will announce the time that they are holding open house to receive men who are interested in becoming better acquainted with them. Rushes attending a fraternity's "open house" will have an opportunity to visit with the members, look through the house and learn something about the fraternity's history, finances and operation.

Rushes To Drive

Following the smoker and open house program, freshmen who have indicated their interest in a fraternity will be invited to the house for supper. Men who are guests at a fraternity house are encouraged to ask any questions they wish regarding pledge training, finances and other pertinent points.

To give every man an opportunity to visit all the fraternities he is interested in and to enable fraternities to contact men who may wish to pledge, no fraternity will pledge a rusher until two weeks after the beginning of classes.

John Omer, IFC president emphasizes the fact that all men interested are cordially invited to take part in these fraternity functions.

There are 19 active social fraternities at State at this time. See GREEKS, Page 10

Programs Of Opera, Symphony, Ballet Included In New Series

Concert Stars



ALBERT SPAULDING



EVELYN



WAYNE KING

'Butterfly' Opens Year On Oct. 4

Lectures and concert featuring many of the nation's top speakers and musicians and musical organizations will be presented in College auditorium during the 1947-48 year.

The series will open with the presentation on October 4 and 5, of the opera "Madame Butterfly" by an nationally known opera company. The lecture half of the series will open with the appearance of Raymond Gram Swenson, radio commentator on October 8.

Most of the concert programs will run for two nights, with ticket holders divided into two sections, A and B. Holders of series A tickets will attend on night B holders the other.

Single Program

Performances by John Charles Thomas, Dorothy Kirsten, and Eugene Conley, and Leonard DePaul's Infantry chorus will be open for A patrons only while only those with B tickets will be admitted to hear Marian Anderson, Leonard Warren and the Philharmonic piano quartet.

All these performers, and others which will be listed below, may be seen by surrendering a coupon from the student activity book, which is distributed at registration to every full-time student.

Special Members

Additional "special" programs for which tickets must be bought, will be presented during the year. Among those scheduled to appear in the special series during fall term are Fred Waring and his Glee Club, Phil Spitalny and his All-Girl orchestra, Wayne King and his orchestra, and the United States Marine Band.

Activity books will also serve to gain admission to the World Academy series, which is presented in conjunction with the lecture-concert series.

The complete lecture-concert series follows:

- Oct. 4-5—Opera—"Madame Butterfly"
- Oct. 8—Raymond Gram Swenson
- Oct. 13-14—Ballet—Russe de Monte Carlo
- Oct. 15—Rebecca West
- Oct. 23—Leonard DePaul's Infantry Chorus
- Nov. 5-6—Philadelphia Symphony orchestra
- Nov. 16—Edward Weeks
- Nov. 24—Jane Gould
- Dec. 2-3—Albert Spaulding violinist
- Dec. 4—Dorothy Thompson
- Jan. 12—Leonard Warren
- Jan. 14—Henry T. Ylor
- Jan. 20—Marian Anderson
- Jan. 22—Dorothy Kirsten and Eugene Conley
- Feb. 19—Morton Gould and concert orchestra
- Feb. 19—Eleanor Steber, Metropolitan
- Mar. 2—Leonard Stowe
- Mar. 4—Philharmonic piano quartet
- Apr. 13—John Charles Thomas
- Apr. 27-29—Helen Traubel, Metropolitan opera
- Series A only
- Series B only
- Oct. 1—U. S. Marine Band
- Oct. 22—Fred Waring
- Oct. 29—Wayne King
- Dec. 3—Phil Spitalny

'S' Musical Organizations Seek Freshmen Members

New students with a talent and liking for music will be happy at Michigan State because there are several musical organizations always ready to try out new talent.

The freshman's first acquaintance with a Spartan musical organization will be the appearance of the famous Michigan State military marching band at the opening of the home football season at Mackay field on October 4.

Beginning of the fall quarter, both men and women may join the variety band, which will play some of the home football games.

This year the band will resume its annual trip when they follow the Spartans to Philadelphia for the game against Temple university. In addition to the football games, the college band will present a regular concert, several spring concerts in the band shell, as well as out of town engagements.

The variety band, under the direction of J. D. Jackson, will begin its second year on the campus. A complete new set of uniforms is ordered for the variety band and will be ready at the

Music Auditions

- A Chappella Choir, room 203, 1-3 p.m. Sept. 23-26
- Band, room 118, 10-12, 1-5 Sept. 23 through 26
- Orchestra, room 202, 1-3 p.m. Sept. 23-26
- Women's Glee club, room 107, 1-3 p.m. Sept. 26
- Men's Glee club, room 208, 1-3 p.m. Sept. 23-26
- Mixed Chorus, room 226, 1-3 p.m. Sept. 23-26

for pep rallies, basketball and baseball games.

Symphony Gives Concerts

The Michigan State symphony, directed by Alexander Schuster,

See MUSIC, Page 11

MSC Humor Magazine Will Publish 10 Issues

The humorous side of life at Michigan State is the food that feeds the Spartan, MSC humor magazine, now entering its second year of post-war publication.

The first issue of the year will hit the newsstands soon after school opens this fall. At not before the subscription salesmen have made their drive for sales.

Ten issues of the magazine will be published during the year. Each issue will cost a piece of paper subscription—costs \$1.85. Business Manager Grant Turnblom has announced.

Editor Con Williams and his staff have aimed the first issue

MSC Prof Named For Board Job

Karl Dressel, associate professor of forestry at MSC and past president of the National Shade Tree conference, has been elected to the board of governors of that organization.

Dressel and Forrest Strong, member of the MSC forestry department and a past president of the organization, attended a meeting in Cleveland, August 18 to 22.

All students, including freshmen interested in staff work on the Spartan, in editorial, art, advertising, business or circulation are invited to visit the Spartan office on the third floor of the Union.

On the serious side it presents news stories, interviews, fashions, reviews in a light vein. Cartoons, pictures and short anecdotes of college life help to liven up the pages.

The Spartan has maintained the record of being one of the best humor magazines in the country.

This will be the second year of publication since war time conditions forced a two year vacation.

Chapel and Center

The war memorial will consist of a chapel and an International center, pictured here. It will be located in formal garden setting on the high ground just east of the Beal Botanical gardens.

The chapel will fill a long neglected vacancy on the campus. The International center will be dedicated to a better understanding of other nations and their people and will serve as a home for Michigan State's International club.

Chapel, International Center To Honor MSC's War Dead

Michigan State's subscription fund for the construction of a war memorial to honor the 340 former students killed in World War II is growing rapidly under the director of Dr. Floyd Owen, '02, chairman of the fund, and Joseph Goundie, assistant director of alumni relations.

First proposed during commencement week of 1946 by a group of alumni headed by E. B. More, '16 of Marshall, the project got under way April 1947 with a subscription drive to raise \$300,000.

The war memorial will consist of a chapel and an International center, pictured here. It will be located in formal garden setting on the high ground just east of the Beal Botanical gardens.

The chapel will fill a long neglected vacancy on the campus. The International center will be dedicated to a better understanding of other nations and their people and will serve as a home for Michigan State's International club.



Dionysians Set Fall Production

The Dionysians, Michigan State's musical production group, will begin operations for its second annual show this fall. The show is entirely student written, acted and produced.

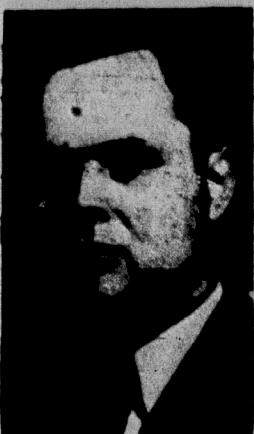
Its first production, "Studio on the Square," was staged last spring. It was adopted from the Kaufman-Connelly "Broadway" comedy of the twenties.

The script is now under way for the next production. Students interested in acting in the writing of lyrics and music, working on the stage sets, trying out for lead, may contact Arnold Bransdort in the State News office.

The Dionysians group at present has fifteen members. Membership is open to all students who take part in one of the productions.

IN LANSING
M. S. C. STUDENTS' FAVORITE EATING PLACE
 FOR
 LUNCHES —
 DINNERS —
 EVENING SNACKS —
CHIKKEE SHOPPE
 1311 E. MICHIGAN
 11 a.m. to 1 a.m. daily
 Fri. and Sat. open till 3 a.m.
 Specializing in "CHIKKEE De-LUXE"
 — STEAKS — CHOPS — SPAGHETTI —
 — All kinds of Sandwiches —
 "Take-Out" Orders at All Times
 Meet and Eat at the "CHIKKEE"

Will Edit MSC-Veterinarian Study Place To Be Found In Library



ERNE MACDONALD



JACK GRAY

Smoker To Open Rush Week

(Continued from Page 9)

Seventeen are holders of national charters, while Delta Kappa and Sigma Zeta have recently applied for charters to become chapters of Delta Upsilon and Zeta Beta Tau respectively. Local chapters of the national fraternities are Alpha Gamma Rho, 805 East Grand; Gamma Sigma Phi, 101 West; and Delta Sigma Phi, 1212 East Grand River.

Other groups participating are 190, primarily books, and Delta Tau Delta, 101 East Grand; and the Phi Kappa Psi chapter, 101 East Grand River. Sigma Alpha Epsilon, 101 East Grand River, and Lambda Chi Alpha, 126 East Grand River, are combined activities.

The new members will be initiated on September 10 at 8 p.m. at the Delta Tau Delta chapter, 101 East Grand River. The new members will be initiated at 8 p.m. at the Delta Tau Delta chapter, 101 East Grand River.

Joint Meetings

Other groups participating are 190, primarily books, and Delta Tau Delta, 101 East Grand; and the Phi Kappa Psi chapter, 101 East Grand River. Sigma Alpha Epsilon, 101 East Grand River, and Lambda Chi Alpha, 126 East Grand River, are combined activities.

The new members will be initiated on September 10 at 8 p.m. at the Delta Tau Delta chapter, 101 East Grand River. The new members will be initiated at 8 p.m. at the Delta Tau Delta chapter, 101 East Grand River.

Study Place To Be Found In Library

Topping the list of buildings awaiting expansion is the Michigan State college library. Now containing some 100,000 volumes and expanding at the rate of 10,000 books a year, the library is far outstripping its facilities.

Expanding from 1,200 volumes in 1881, the library has come a long way toward giving students adequate research and study opportunities.

On the main floor are rooms for assigned reading, the rare book room, coal room and offices of the catalogue department and assistant librarian.

Assigned Reading Room

The assigned reading room has a seating capacity of 140 and a circulation exceeding 150,000 volumes per year. Books are put in the assigned reading room by instructors for the use of their classes because the circulation is more restricted.

Various studies to periodical literature as well as catalogues for the books are to be found on the second floor. A main reading room seating 120 and a periodical room adjoin the main circulation desk on the second floor.

Third Floor

Another reading room may be found on the third floor. It adds another 100 to the total seating capacity. Librarian Jackson E. Thorne office is on the third floor also.

The basement contains additional reading rooms, a browsing room and a storage space for bound volumes. The main circulation desk is located in six rooms which occupy the west end of the building.

Department Libraries

Because of overcrowding the library maintains departmental libraries in the chemistry and music buildings.

The library has a large collection of agricultural collections and the general periodicals number line.

During the school year the library is open at 7:30 a.m. and closes at 11:30 p.m. except Sunday when it opens at 2 p.m. and closes at 10 p.m.

Expenditure plans call for a seating capacity of at least 1,000 with space for half a million volumes.

Union Grill—Mecca Of College Life

"Mecca in the grill" are words that have stuck a familiar note with MSC students for 22 years. Thousands gather daily to quench their thirst and meet friends in the swarm of humanity that resembles Grand Central station.

This seems to be their home and Mrs. Lucinda Kelly, manager of the Union grill.

Customers lining the counter are served by 15 fulltime and 20 parttime student employees. Over 3,000 sales are made daily.

Doors to the grill swing open as the morning chimes seven and approximately 800 breakfasts are sold during the morning. Maquis open the early bird's eyes with a array of fruit and chilled juices, beef aged, cereals, eggs, meat, toast, sweet rolls and cakes.

At 11 a.m. preparation is begun for the grill swing open as the morning chimes seven and approximately 800 breakfasts are sold during the morning. Maquis open the early bird's eyes with a array of fruit and chilled juices, beef aged, cereals, eggs, meat, toast, sweet rolls and cakes.

This year coin machines will dispense hamburgers and hot dogs, cokes, cigarettes, and even more. The grill is open from 7 a.m. to 12 m. Monday through Thursday, from 7 a.m. to 12 m. on Friday and Saturday, and from 8 a.m. to 3 p.m. on Sunday.

You'll Need
 THE
KERNEL
 (SEE PAGE 15)

NYLON BARELEGS
\$1.00 2 PMS.
 PL. 9.15

Nothing else all Nylon chifon—
 The perfect stocking for the perfect trip.

Neumode
 111 N. Washington

CAPITOL FILM SERVICE

VISIT OUR
PROFESSIONAL RECORDING STUDIO
ORGAN ACCOMPANIMENT AVAILABLE
ONE DAY DEVELOPING
and PRINTING
DOUBLE SIZE PICTURES

224 Abbot Road Downstairs—Across from State Theatre

FRESHMEN

We Introduce
 to You

a

Campus Favorite

RALPH'S CAFETERIA, Inc.
 225 EAST GRAND RIVER
 EAST LANSING

Town & College Shop

Classic Coats De-luxe



THE ALL SEASON

ALL WEATHER

ALL PURPOSE COATS

With Genuine Chamorro removable lining—Nature's windbreaker. Easy to zip-in or zip-out. You're never caught short by the weather.

Worsted Gabardine and Venetian Coverts

BLACK, BROWN, AND GREEN. SIZES 16 to 20
 Price **\$59.95**

Select yours now! Take advantage of our convenient Lay-Away plan.

TOWN & COLLEGE SHOP

Open daily 10-11 a.m. to 8-10 p.m.
 Thursday until 7:00 p.m.

Tel. 8-3115
 205 E. Grand River, East Lansing

check these chuckles:

- ★ **SEPTEMBER** your FRESHMAN issue... features for the fresh... laughs for beginners and upperclassmen alike
- ★ **OCTOBER** your big FOOTBALL issue... peppy facts, fantasy, and foolishness in tune with State's new pepskin spirit
- ★ **NOVEMBER** comes a pulp issue... a HORROR magazine that out-horrors all horror magazines... bring the ladies, they'll scream
- ★ **DECEMBER** your CHRISTMAS issue... rags for the Holidays... celebrate the season in style
- ★ **JANUARY** Surprise... starting the new year right, send this home to mother.
- ★ **FEBRUARY** your mammoth EXCHANGE issue... the best stuff stolen from forty other top college humor mags.
- ★ **MARCH** the famous ASTONISHER and COLLEGIATE INDIGESTION issue... we pan the State News all over the campus.
- ★ **APRIL** a fabulous CARTOON issue... our crazy people knock themselves out with pen and ink... strictly for kicks.
- ★ **MAY** a great HUMORIST surprise... our evil old minds are working on it now.
- ★ **JUNE** the famous jumbo-size WATER CARNIVAL PROGRAM and COMMENCEMENT issue... you'll need a wheelbarrow to carry away all the gags in this one.

Ten big issues, check full of Spartanish humor... Be a copy on the stands... or save and buy a year's subscription for a cozy old book plus eighty-five pennies... a TRADITION at Michigan State... swing into our eleventh and biggest and funniest year... satire, parody, art at its best and worst... collegiate spirit in the happiest sense of the word... send it home, send it to your friends, keep copies for your college scrapbook... your grandchildren will love it... everybody can understand it... no words over three syllables... even the faculty reads it... check these chuckles again, kids... for a humorish good time once a month, during the coming year... invest in your LAUGH-OF-THE-MONTH club... the Spartan.

The SPARTAN Magazine

Editorial and Advertising Offices: 3rd Floor, Union Bldg.

Student Council Faces Busy Fall Term Schedule

Spartan Governing Body Begins First Year Under New System

Student council, governing body for 15,000 Spartan students, will begin its first year of operation this fall under a new system of representation. Formerly elected only by class and school, candidates were first elected from the district in which they live in a record vote last spring.

The council's 43 members meet every week to pass on applications of student organizations for charters, to vote participation in various student drives, to oversee class elections, and to act as a liaison between the students and the administration.

Honoraries Important At State

New people and new places are not the only thing fresh in the air at the state meeting. The new members of the various schools and departments are also new. They learn the names and customs of the new honorary organizations at the meeting.

Almost every school in the college is represented by an honorary society. In addition to the honoraries of the various schools and departments, there are special honoraries for outstanding students from the standpoint of service and extracurricular activity.

Excelsior is the most important of these honoraries. The 13 outstanding men in the senior class are usually chosen to membership in this secret organization on the basis of service to the college and the student body, character and scholarship.

Another group aimed at good character is the Blue Key, the national honor society for men. Membership is restricted to men of high scholastic achievement and service to the college.

Green Helmet, made up of sophomore men who have done excellent work during their freshman year, takes an active part in Freshman Week activities.

For Engineers Only
There are two engineering honoraries. Tau Beta Pi, the national engineering fraternity, is primarily concerned with high scholastic standing. The other, engineering honorary is Phi Lambda Tau, a local group.

Alpha Psi, national veterinary honorary, takes their members to the open 75 percent of the high scholastic standing and veterinary students is the most of the group.

Other national honoraries at Michigan State include Alpha Zeta, agricultural; Sigma Delta Chi, journalism; and Xi Sigma Pi, chemistry group.

Alpha Phi Omega is the national service honorary. A great number of projects is included in its program. One of the most popular of their activities is the annual homecoming dance.

Green wood burns when stacked together on hot coals. This is the fact the heat is not lost from one piece to another and cold air is kept away.

Prescription Stores

MOBST

STRICT ADHERENCE TO YOUR DOCTOR'S ORDERS IS IMPORTANT IN SAFEGUARDING YOUR HEALTH

224 SO. LOGAN, LANSING
224 SO. CEDAR, LANSING
116 W. GRAND RIVER
EAST LANSING STORE
Located 1 Block West of Abbott Road

MUSIC

(Continued from Page 9)

is the other main instrumental organization. In addition to providing accompaniment for several other programs during the year, the orchestra appears in concert at least twice a year.

For those whose musical talents are on the vocal side, the men's glee club, under the direction of Joseph Machtel, combines harmony and good fellowship. The women's glee club, under the direction of Dr. William Sur, makes several appearances annually, as does the a capella choir, for which a new director has not yet been appointed.

Auditions for membership will be held in the Music building for all these organizations.

PATRONIZE STATE NEWS
ADVERTISERS

**WELCOME
— FROSH —
TO STATE AND EAST LANSING
DEWAR'S CLEANERS**
EAST LANSING'S MOST REASONABLE CLEANER
121 Stoddard 4 Blocks East of Mason-Abbott Hall
Off Grand River — Phone 8-5314

You may think you are not photogenic, but have you sat for JOHN W. SHAVER? No matter how much difficulty you have encountered in obtaining a GOOD PORTRAIT of yourself, when once you sit for Mr. Shaver you will be convinced that you DO PHOTOGRAPH WELL! When the need for a portrait arises, remember JOHN W. SHAVER and call 8-3418 for an appointment. Or better still, you are always welcome to visit him in the MARWOOD STUDIO, at 1043 EAST GRAND RIVER, EAST LANSING, a stone's throw from your home on the campus.

MARWOOD STUDIO

Printers for
Michigan State News
Since 1919

The
**CAMPUS
PRESS**
Inc.

202 Evergreen
East Lansing

FIRST TO SEARS... THEN TO SCHOOL

**FIRST TO SEARS
THEN TO SCHOOL**

SEARS
See proof... that
low prices are here,
now—in our great

Early Fall...

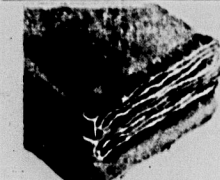
fur sale
featuring
MOUTON LAMB



79.50
plus
Fed. Tax

Fur coat prices are down—buy now at Sears and save! Every fur coat in this great event is a new 1948 featured fashion... with luxurious details, novel cuffs, huge sleeves, smart collars, and front closings. See this thrilling selection—today!

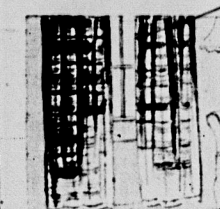
KERRYBROOKE LABEL and
Fur Bond—guarantee of
style, quality and value



Camp Blanket

Reg. 5.95 **3.79**

Part wool camp blanket in wine, blue or green. Rayon satin bound edge gives fine appearance on cot or in car. Specially priced.



Plaid Draperies

Cotton Crash **7.98**

Interestingly textured unlined plaid crash with eye appealing design, 36-in. wide, 2 1/2 yds. long. Red, blue. Tiebacks included.

You are Now Living in a Fine Community... Where Careers are Started! Learn to Shop at SEARS for Important Economical Reasons!



Buy Anything Totaling \$10 or More on SEARS Easy Payments

**WELCOME TO
M. S. C.**

... and to Sears where you'll learn to get more from your budget than you ever dreamed possible. Ask Dad!

Look Your Best
in New Fall

**Kerrybrook
Sweaters**

Pullovers

2.98 and 3.98

Long wearing lightweight virgin wool sweater for many occasions. This sweater has many possibilities. Dress it up with pearls, a bright pin, or any costume jewelry. New fall colors. Sizes 34 to 40.

Cardigans

3.98 and 4.98

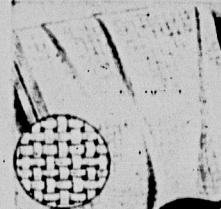
Boxy cardigans, fitted cardigans that double nicely for a jacket. Knit of 100% downy soft virgin wool for wear, beauty and style. Match 'em or mix 'em with pullovers. Sizes 34 to 40.



Unpainted Chest

3 Big Drawers **16.95**

Ready to put together... at smart savings. Assemble it... paint it... and save! Of fir, or spruce with backs and bottoms of Masonite Plywood.



Monk's Cloth

Back Again! **1.19** yd.

Make tailored spreads, draperies, and throws. Good-looking! Long-wearing! Of heavy quality cotton in neutral ivory. 52-inches wide.



Crinkle Bedspread

81x105 Inches **3.19**

Favorite for daily use. Crinkled cotton—slow to show dirt or muss. Easily laundered—no ironing is necessary. In blue, rose or green.

Sure... you can
buy Broadcloth

**WHITE
SHIRTS**

Sears Pilgrim
Quality with Good
Looking Fused Collar
is Back Again

2.98

Men! Help yourself to cool comfort in these all whites. Choose from fine quality white broadcloth. Sanitized so they can't shrink more than 1%. Neck sizes 14 to 17.



Gold Bond Campus Cuts

The Swagger Shoe
... for Ruggedness
... for Smart Style

\$7.70

Right on the 50 yd. line for sport, or in the groove at varsity dances, these swagger cuts for all around wear are so casually comfortable underfoot, you'll have to have a pair.

SEARS

You Buy Satisfaction... You Get Satisfaction... At Sears!

Store Hours: 9:00 A. M. to 5:30 P. M.
Free Parking in Rear for SEARS Customers
Phone 5-7201 300 E. Michigan Ave.

Campus Churches Serve All Faiths

'Y' Organizations Expect Biggest Year With Full-Time Director, New Building

Student Clubs Supervise Group Social Activities

Churches of almost every denomination in Lansing and East Lansing extend an invitation to freshmen to attend their Sunday morning and evening services. The regular Saturday edition of the State News has a church column which provides information regarding the hours during which services are held and scheduled meetings of the various church clubs.

Students of the Catholic faith may attend daily or Sunday masses at St. Thomas Aquinas church on Abbott road. Social activities for Catholic students are held at the home of the Newman Club.

Inferendental Protestant services are held at Peoples church on Grand River in East Lansing. The YMCA, the YWCA, and the Student Christian foundation hold meetings in the Student center, next door to the church.

Lutheran students may attend services in the State theater, Abbott road, or at the Christ Lutheran church on South Pennsylvania in Lansing. Building priorities have held up the building of a new college Lutheran church. The Lutheran student club and Gamma Delta, another Lutheran student organization, supervise social gatherings of Lutheran students.

The Canterbury Club, for Episcopal students, meets at the Episcopal student center on Abbott road. Episcopal services are also held there.

Christian Science services are held in the Masonic temple on M.A.C. avenue.

Methodist, Baptist, Christian Science, and numerous other denominations have churches in Lansing.

Jewish students may attend synagogues in Lansing. A Jewish student organization, Hillel, holds meetings and parties at their clubhouse located at Grand River and Hillcrest, East Lansing.

CHRISTIAN STUDENT FOUNDATION

Interdenominational

Welcomes all new students to the campus of M.S.C. and invites them to participate in our various activities:

Worship Social Service Leadership Training Recreation Campus Affairs Public Relations
Lounge and reading rooms in the FOUNDATION HOUSE at 148 West Grand River Ave., East Lansing, Michigan.

"The Friendly Church on the Busy Corner"

You Are Personally Invited

TO ATTEND

The South Baptist Church

South Washington at Munson River Drive

Worship Services - Sunday 11 a.m. and 7 p.m.

Sunday School 9:45 a.m.

Young People 5:45 p.m.

Good Cheer Service - Wednesday 7:15 p.m.

The Church with the Neon Cross—"Jesus Saves!"

YWCA-YMCA

"LEARN THE ROPES" CAMP

September 26, 27, 28 Waterloo Recreational Area

Cost: \$7.50 includes meals, lodging, transportation to and from the campus. Open to all incoming students.

Send reservations to YWCA-YMCA offices 118 W. Grand River Ave., East Lansing, Michigan

Dinner-Dance, Freshman Camp

Feature Early Fall Program

Michigan State's YMCA and YWCA will enter their biggest year of activity this fall with a new home and a full-time director.

Both of the "Y" organizations, as well as the Christian Student foundation, will have new headquarters in the student center, in the former Alpha Xi Delta sorority house just east of the Peoples church.

Lester Dobson is the first full-time director in charge of the YMC-A program at Michigan State. He was recently program secretary of the Michigan Branch of the YMC-A in New York city.

Will Work Together. Dobson will work with M. E. McCallough, director of the Christian Student foundation, Nancy Hall, his assistant, and Edith Ramsey, director of the College YWCA.

Student presidents of the YWCA and YMCA, respectively, Ruth Ann Thompson and John Higgins, spent the summer at the Chicago school of student Christian leadership.

Planning to early activities of the Y will be the Freshman Week dinner-dance, Tuesday, September 23. More than 400 men and women can be accommodated at the dinner. A social dance will be held after the dinner in the Union ballroom.

See Y Page 13

Invites Frosh To Open House

The Spartan Christian fellowship organization has announced that an open house will be held in the foyer, second floor of the Union building, at 3 Thursday evening, Sept. 25. Freshmen are especially invited.

Fellowship headquarters are at Bethel Manor, 435 M.A.C. It is an interdenominational group which seeks, by adherence to the Bible, to develop a deeper spiritual life for students.

Bible Study. The organization sponsors Bible study groups and conducts daily morning prayer services in the Union building. It also brings prominent speakers to the campus.

Each Sunday afternoon an inspirational time is held at Bethel Manor.

Throughout the regular school year, the group maintains in the Union ballroom.

See OPEN HOUSE Page 14

YWCA-YMCA welcomes all State's students, faculty and staff to membership in the Association.

YWCA helps you help yourself get acquainted know your campus serve the community become a part of a world student movement Dues - \$2.00 per year. (Minimum)

Offices - FOUNDATION HOUSE, 118 W. Grand River

- UNITY -

EAST LANSING UNITY-CENTER

224 ABBOTT ROAD, COLLEGE MANOR BUILDING

Affiliated with Unity School of Christianity, Kansas City, Mo.

SUNDAY, 11 A.M. - Bible Interpretation
WEDNESDAY, 8 P.M. - Study, healing Service

RONIE C. MILLER, Minister
Telephone 8-1715

First Church of Christ, Scientist

EAST LANSING

Cordially invites you to attend its services

SUNDAY MORNING AT 11 O'CLOCK
WEDNESDAY EVENING AT 8 O'CLOCK

Sunday School in the morning at 9:30 o'clock

All Services are held at EAST LANSING MASONIC TEMPLE 314 M.A.C. AVENUE

Reading Rooms are located at 211 ABBOTT BUILDING - EAST LANSING

SPARTAN CHRISTIAN FELLOWSHIP

Bethel Manor - 435 M.A.C.

• A free-wire, fundamental Christian organization affiliated with Inter Varsity Christian Fellowship.

• An organization designed to meet your spiritual and social needs at college.

• Plan to attend our Orientation Week Meeting Thursday, September 25, in the Foyer of second floor Union Building at 8 p.m.

"To know Christ and to make Him Known"

FIRST CHURCH OF CHRIST

(Christian Church)

Holmes at Eureka Street

(1 block south of E. Michigan)

Bible School 9:45 a.m.

Worship 10:30 a.m.

Youth Societies 6:30 p.m.

Evening Service 7:30 p.m.

J. CLYDE LAWDER, Minister

St. Thomas Aquinas Church

- AND -

Student Chapel

405 Abbott Road

East Lansing, Michigan

ORDER OF SERVICES

MASSSES

Sunday 8:00 - 9:00 - 10:00 - 11:30 - 12:30
Weekday 7:00 - 8:00
Holy Days of Obligation 7:00 - 8:00 - 9:00 - 12:00

CONFESSIONS

Saturdays 4:00 - 5:30, 7:30 - 9:00
Mondays 7:00 - 8:00
Daily before and after all Masses, 5:00-6:00

DEVOTIONS

Miraculous Medal Novena, Tuesday 7:30
Daily Rosary Novena 5:15

RELIGIOUS INSTRUCTION

Catholics and non-Catholics interested in studying the doctrines of the Church can receive private instructions by appointment or attend Inquiry Classes to be held in St. Thomas Aquinas Church at the following hours:
Monday 7:30 p.m. Tuesday 4:00 a.m.
Wednesday 7:30 p.m. Thursday 10:00 a.m.

CATHOLIC STUDENT ACTIVITIES

The Newman Club is the official Catholic organization at MSC. The purpose is to foster the spiritual, educational, and social life of the Catholic student at MSC. Newman Hall, 117 Fern Street, provides a "home-away-from-home" atmosphere, with snack bar, library facilities, discussion and study groups, weekly Communion breakfasts, mixers, under student direction.

ORIENTATION WEEK MEETING

Newman Club Mixer 8:00 - 9:15 Thursday, September 25
Little Theatre, Home Economics Building
Student Spiritual Retreat, October 12-13.

Three Priests at the Service of the Students at all times

FIRST CHURCH OF THE BRETHREN

1229 Prospect Street - Lansing

CHURCH SCHOOL - 10:00 O'CLOCK

CHURCH WORSHIP - 11:00 O'CLOCK

YOUTH GROUP - 6:30 O'CLOCK

EVENING SERVICE - 7:30 O'CLOCK

WALTER M. YOUNG,

417 N. Clemens Avenue Phone 4-9223

PLYMOUTH CONGREGATIONAL CHURCH

Across from the Postoffice and Capital (Michigan and Townsend Sts., Lansing)

MINISTERS

Dr. Harold M. Bartholomew, 1415 Rev. Anselm A. Westwood, 1415

Meetings on Sunday of interest to College Freshmen

10:00 A.M. Adult Bible Class

11:00 A.M. Morning Worship Service

7:00 P.M. College Age Fellowship

There will be an opportunity to participate in the Adult Choir

the Church School, the Plymouth Players (dramatics), the singing

program, after school recreation and handicrafts.

The ministers are available for friendly counsel and the church

office, library and reading room are open each weekday from

9 to 12 a.m. and from 1 to 3 p.m.



LUTHERAN STUDENTS

A FRIENDLY WELCOME AWAITS YOU

COLLEGE LUTHERAN CHURCH

WORSHIPING in the E. Lansing STATE THEATER until our NEW CHURCH is completed

Sunday School 9:30 a.m. Worship Service 10:30 a.m.
Rev. Wm. Young, Pastor Phone 8-2735

LUTHERAN STUDENTS WELCOME TO CHRIST LUTHERAN CHURCH

(Missouri Synod)

College bus to 1000 E. Mich., walk 1/2 block South on Pennsylvania

MORNING WORSHIP 10:45

Communion on 4th Sunday

GAMMA DELTA-

Sept. 23 - Welcome Luncheon 5 p.m.

Sept. 25 - First meeting - at church

8 p.m.

E. L. WRIGHT, Synod's Student Pastor

114 S. Penn. Ave. Phone 2-2132

The International Association of Lutheran College Students, sponsored by the Missouri Synod and governed of, and by Lutheran students of the Synodical Conference

State News Offers Work, Fun



AL BERGLUND
Managing Editor

PAT MCCARTHY
Editor

NAN VANDERVOORT
Co-Ad Manager

VAL WILDER
Co-Ad Manager

Vets Publish Quarterly

The shy and retiring members of Michigan State's group of publications is the MSC Veterans, a quarterly magazine for veterans of Michigan State.

McDonald, East Lansing, is the editor of the quarterly and Jack Gray will serve in the capacity of business manager.

The magazine is published by members of the School of Veterinary Medicine and is devoted to the study of the field of veterinary medicine.

The magazine has received the recognition for its scientific nature and new methods in the veterinary medicine.

The Sixth Year Veterinary has been published since the first five years of the school.

McDonald's assistants, John Dick Wheeler, copy editor, and Artie Miller, make-up editor, and Mary Mayfield, illustrate.

Working staff in the business department will be Ronald Scott, business manager, William Jackson, circulation manager, and Bob Randall, accounting.

Subscription dividends paid by the corporation for the first year of 1947 were 21% higher than the same period of 1946.

(Continued from Page 9)

editors, reporters and business personnel blanket the state and country as successful newspaper and advertising employees and executives.

A staff meeting for all men and women interested in working on the State News will be held in the office opposite the Union cafeteria during the first week of classes. Actual date and time of the meeting will be announced in the first issue of the paper. This fall, scheduled for publication on Tuesday, September 30.

YW-YM

(Continued to Page 12)

The two organizations are also extending invitations to attend Freshman camp, which runs from Friday afternoon through Sunday of Freshman week. The camp will provide a good mixture of recreation, friendship and orientation to new students. Prominent students will offer information about the college and its activities and traditions.

All Michigan State college students and freshmen in particular are invited to become members and participate in the programs of these outstanding organizations. Freshmen are invited to send in reservations now for the dinner-dance and the freshman camp.

PATRONIZE STATE NEWS ADVERTISERS

The Best Ever . . .

"PIN CURL PERMANENT"

Curls the way you like them — Soft and natural looking

WE SPECIALIZE IN RAZOR HAIR CUTTING

BETTY'S BEAUTY BAR

203 MAC AVENUE PHONE 5-5115 EAST LANSING
OPEN EVENINGS BY APPOINTMENT

Inviting you to visit
our store
The finest in meat,
groceries and produce

FREE
DELIVERY
ON ORDERS OF \$5.00

HILL'S GROCERY

131 W. GRAND RIVER
PHONE 5-2371
EAST LANSING



GEORGE M. HILL

For Carefully Cleaned Clothes Come to Campus Cleaners

CAMPUS CLEANERS

347 E. Grand River Ave.

We Offer You —

Special 1 Hour Dry Cleaning Service

Press While You Wait Service

Regular 3 Day Service

WE HAVE INSTALLED ALL NEW EQUIPMENT DESIGNED FOR EFFICIENT SERVICE FOR YOU. OUR PRESSERS AND SPOTTERS HAVE HAD 20 YEARS' EXPERIENCE

Be Sure To Try Our Service Soon

An Atmosphere of Friendliness
To Which You Will Return

The HIDEAWAY

203 M.A.C.

JUST OFF GRAND RIVER AND DOWNSTAIRS

Custom-Built Hamburgs

With

PERSONALITY

PENNEY'S

BEDROOM VALUES

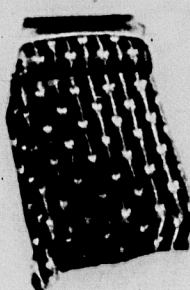
NIGHT
and DAY!



Luxurious
CHENILLE SPREAD

HEAVILY TUFTED CHENILLE in pastel shades. Divide one for matching drapes. Some with center basket design. 9.99

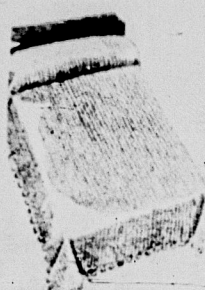
Penney's Second Floor



Finely Woven

Colonial Spread

Twin or Double Size 5.90
Rose, blue, green



All-Over Hobnail

BED SPREAD

Sturdy Sheeting 4.98
Back Some Fringed

Penney's Second Floor

AT DENNEY'S

CAMPUS FAVORITIES!

In the Season's
Outstanding Styles



PLAID COATS with sweeping full backs, deep cuffs, detachable hood. Colorful, large plaids perfectly matched. All wool 12-16. 24.75

CASUAL WOOL DRESSES in rich plaids or stripes. Contrasting velvet or yarn trims. Perfect for classroom or dates. 9-15. 12.75

ALL WOOL SWEATERS in cardigan or pullover styles 3.98
In luscious new fall shades

aqua polka, candy red, Mexican green, black, white. 34.40 4.98

Penney's
Third Floor



College Classics!

To Replenish Your
Fall Wardrobe....

TOWNCLAD SUITS in fine all wool worsteds. Hand tailored plaids, herringbones, sharkskins in blue, grey, brown, or tan. 36-44. 42.50

TOWNCRAFT DRESS SHIRTS of sanitorized broadcloth, oxford cloth or pique. Full cut. White and fancy stripes. 11-17. 3.49

ALL WOOL SLACKPANTS in flannel or covert. Pleated front, zipper closing. Tan, blue or brown. 19-42. 9.50

Penney's Downstairs Store



All-Fur Felt Marathons*

Leave it to Penney's to serve up all-fur felts with rich rayon satin linings — at this down-to-earth price! Factory-blocked so they're always in perfect shape. New Fall shades.

5.90

Penney's Downstairs Store

Music Library Lets Students Hear Best Recorded Music

If you're looking for the lost chord or the composer of Beethoven's Fifth Symphony, the music library will undoubtedly put an end to your search.

The lists of the library include 4,130 titles, including books, scores, records and regular periodicals. This list contains 2,800 records and 25 magazines.

The books are selected on a musical basis, with special emphasis on music education. The shelves also harbor many rare manuscripts of books and musical scores.

In Music Building

The music library, one of the most attractive in the country, is a branch of the main library and is located on the second floor of the music building.

A part of the library consists of five listening rooms where music students may listen to records and an additional record circulation system has been set up for members of the faculty.

Margaret Stanton, 1946 music graduate of MSU, is the head librarian. Miss Stanton, who received her degree in library science at the University of North Carolina, is the first trained librarian in the history of the music department.

Library Hours

The records which include symphonies, concertos and musical comedies may be checked out

weekdays between 8 a.m. and 10 p.m. and on Saturdays between 8 a.m. and 5 p.m.

Prof. Roy Underwood, head of the music department, emphasizes that the facilities are for the use of the whole student body on a "first come, first served" basis.

Underwood also stated that there is hope for an addition to the music building with a plan for 10 more listening rooms, to be open for all students of the college.

OPEN HOUSE

(Continued from Page 12) week-end interstate conferences and in meetings with students from other campuses.

Social Program

President Vernon Carver, Plymouth Union, reports that the fellowship program this year will include parties of all varieties, hayrides, dinners, hikes and many other activities designed to increase the students' circle of friends.

The organization is affiliated with the Inter-Varsity Christian Fellowship group, an international Christian organization.

Buildings, Utilities Department Serve Heat, Light, Power To State Campus

Under the direction of E. E. Kinney, the building and utilities department looms as one of the more important agencies on campus that serves the daily needs of the college.

Consuming over 30,000 tons of coal a year, the power plant, a major division of the department, provides steam and electricity for the

function of this division. Other divisions in the department include carpentry, masonry, repairing roads and sidewalks, painting, electrical.

Employees in the department run the 25 elevators on campus, man the telephone switchboard, operate the service garage and maintain the plumbing and heating.

College students seeking part-time work, especially at night can find jobs in the department of the college. Its main office is located just inside the door of the power plant.

Daily, 1,000,000 gallons of water are pumped from underground wells to supply all water needs. The cleaning division of the buildings and utilities department is busy day and night caring for more than 3,000,000 square feet of floor space. Setting up facilities for special occasions is also a

Welcome Freshmen

to
M. S. C. and also to
BUDD'S MUSIC HOUSE

Lansing's oldest and largest dealer for:

Records by

R. C. A. Victor
Columbia
Capitol
Decca

Radios by

Stromberg Carlson
R. C. A. Victor
Philco

Instruments by

Renolds
Hollon

BUDD'S MUSIC HOUSE

"Everything in Music"

218 S. Washington

Phone T-6613

WELCOME—

VETS

MICHIGAN STATE COLLEGE POST

AMERICAN LEGION

MEETS 1st THURSDAY AND
3rd WEDNESDAY OF
EACH MONTH

Join MSC's oldest and largest
veterans organization

Welcome Class of '51

Come to

THE FAMOUS GRILL



TRY OUR
SIZZLING
STEAKS

539 E. Michigan Ave.

Tel. 5-1516

The Only Store Handling A
Complete Line of

NEW AND USED TEXTBOOKS

FILLERS and SPIRALS
LAB EQUIPMENT

ENGINEERING EQUIPMENT

STUDY LAMPS

LAUNDRY CASES

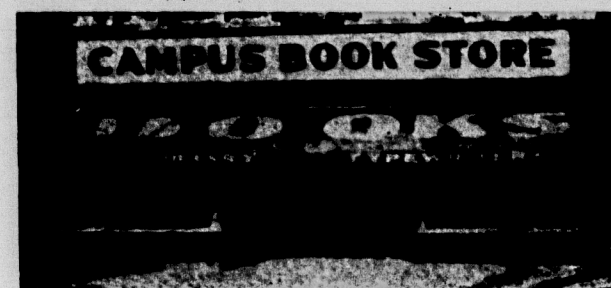
JEWELRY

STATIONERY

SPORT and T-SHIRTS

We Serve the Veteran Student

We Serve the Non-Veteran Student



CAMPUS BOOK STORE

Opposite the Union Building

COME IN AND GET ACQUAINTED - FREE MSC MATCHES TO ALL STUDENTS

SECTION 3 SPORTS

Intramural Sports Offer All Students Chance To Compete

College And Fraternities Sponsor
Leagues Or Meets In 11 Sports

From Ralph H. Young, MSC Athletic Director

The staff members of our department are glad to welcome each member of the incoming freshman class, and cordially invite you to make full use of our excellent physical education and athletic facilities both indoor and outdoor.

Michigan State college has 72 acres of athletic fields, \$1,108,000 gymnasium and fieldhouse with pool and basketball courts. Separate fields and gymnasium space are provided for each sport.

It is our hope that you will use all facilities to the fullest extent of your time, and that you will enjoy rooting for our Spartan teams.

RALPH H. YOUNG



Highlights Of The 1946-47 Sports Year

The 1946 football season ended what was to become a rather up and down year in sports for Michigan State College.

Spartan gridirers produced a record, five-loss record in a year that was filled with drama. Ten games composed one of the toughest football schedules in Michigan State history.

In basketball, as in football, the Spartans went up like a rocket and plummeted like a rock. The week for week, track, base, and swimming teams, meanwhile, ranked with the best in the history.

In minor sports, men wearing Green and White turned in fine records in tennis, wrestling, boxing, and fencing.

Human Resigned
The football season saw one star as another fell. Shortly after final game, Coach Charles Macklin turned in his resignation after 33 years of service to Michigan State.

His resignation was a surprise to many, as he had been expected to continue for several more years.

Coach Macklin's resignation was a surprise to many, as he had been expected to continue for several more years.

Coach Macklin's resignation was a surprise to many, as he had been expected to continue for several more years.

Coach Macklin's resignation was a surprise to many, as he had been expected to continue for several more years.

Coach Macklin's resignation was a surprise to many, as he had been expected to continue for several more years.

Coach Macklin's resignation was a surprise to many, as he had been expected to continue for several more years.

Coach Macklin's resignation was a surprise to many, as he had been expected to continue for several more years.

Coach Macklin's resignation was a surprise to many, as he had been expected to continue for several more years.

Coach Macklin's resignation was a surprise to many, as he had been expected to continue for several more years.

Coach Macklin's resignation was a surprise to many, as he had been expected to continue for several more years.

Coach Macklin's resignation was a surprise to many, as he had been expected to continue for several more years.

Coach Macklin's resignation was a surprise to many, as he had been expected to continue for several more years.

Coach Macklin's resignation was a surprise to many, as he had been expected to continue for several more years.

Coach Macklin's resignation was a surprise to many, as he had been expected to continue for several more years.

Coach Macklin's resignation was a surprise to many, as he had been expected to continue for several more years.

Coach Macklin's resignation was a surprise to many, as he had been expected to continue for several more years.

Coach Macklin's resignation was a surprise to many, as he had been expected to continue for several more years.

Coach Macklin's resignation was a surprise to many, as he had been expected to continue for several more years.

Coach Macklin's resignation was a surprise to many, as he had been expected to continue for several more years.

Coach Macklin's resignation was a surprise to many, as he had been expected to continue for several more years.

Coach Macklin's resignation was a surprise to many, as he had been expected to continue for several more years.

Following the 55-7 Michigan debacle, Guerre and Chandonis flashed against Marquette, scoring once each as MSC tallied a 20-0 victory over the Hilltoppers.

Maryland came here the following Saturday and saw Guerre, Chandonis, and Jim Blenkhorn pour on the heat to topple the Terrapins, 28-14.

If proof were needed of the potency of the "touchdown twins," Guerre and Chandonis provided it in the closing game. Guerre crossed Washington State's goal line twice and Chandonis added the clincher with less than five minutes to go to spill the Cougars, 26-20.

Biggie Munn Appointed
It was at a banquet following this game that genial Charley Bachman offered his resignation. Later in the year Biggie Munn was named to take the reins.

Ben Van Alstyne's basketball squad played some brilliant ball but had enough off nights to wind up with an 11 win, 10 loss season.

Tony Waldron and Ollie White gave Van an experienced pair for the guard spots, while Robin Robinson was his performance in Pennsylvania that really sent "Little Dynamite" on his way to stardom. After successive losses to Cincinnati, Kentucky, and Michigan, State suddenly developed a double-barreled attack with Guerre and Lynn Chandonis carrying the mail.

Following the 55-7 Michigan debacle, Guerre and Chandonis flashed against Marquette, scoring once each as MSC tallied a 20-0 victory over the Hilltoppers.

Maryland came here the following Saturday and saw Guerre, Chandonis, and Jim Blenkhorn pour on the heat to topple the Terrapins, 28-14.

If proof were needed of the potency of the "touchdown twins," Guerre and Chandonis provided it in the closing game. Guerre crossed Washington State's goal line twice and Chandonis added the clincher with less than five minutes to go to spill the Cougars, 26-20.

Biggie Munn Appointed
It was at a banquet following this game that genial Charley Bachman offered his resignation. Later in the year Biggie Munn was named to take the reins.

Ben Van Alstyne's basketball squad played some brilliant ball but had enough off nights to wind up with an 11 win, 10 loss season.

Tony Waldron and Ollie White gave Van an experienced pair for the guard spots, while Robin Robinson was his performance in Pennsylvania that really sent "Little Dynamite" on his way to stardom. After successive losses to Cincinnati, Kentucky, and Michigan, State suddenly developed a double-barreled attack with Guerre and Lynn Chandonis carrying the mail.

Following the 55-7 Michigan debacle, Guerre and Chandonis flashed against Marquette, scoring once each as MSC tallied a 20-0 victory over the Hilltoppers.

Maryland came here the following Saturday and saw Guerre, Chandonis, and Jim Blenkhorn pour on the heat to topple the Terrapins, 28-14.

If proof were needed of the potency of the "touchdown twins," Guerre and Chandonis provided it in the closing game. Guerre crossed Washington State's goal line twice and Chandonis added the clincher with less than five minutes to go to spill the Cougars, 26-20.

Biggie Munn Appointed
It was at a banquet following this game that genial Charley Bachman offered his resignation. Later in the year Biggie Munn was named to take the reins.

Ben Van Alstyne's basketball squad played some brilliant ball but had enough off nights to wind up with an 11 win, 10 loss season.

Tony Waldron and Ollie White gave Van an experienced pair for the guard spots, while Robin Robinson was his performance in Pennsylvania that really sent "Little Dynamite" on his way to stardom. After successive losses to Cincinnati, Kentucky, and Michigan, State suddenly developed a double-barreled attack with Guerre and Lynn Chandonis carrying the mail.

Following the 55-7 Michigan debacle, Guerre and Chandonis flashed against Marquette, scoring once each as MSC tallied a 20-0 victory over the Hilltoppers.

Maryland came here the following Saturday and saw Guerre, Chandonis, and Jim Blenkhorn pour on the heat to topple the Terrapins, 28-14.

If proof were needed of the potency of the "touchdown twins," Guerre and Chandonis provided it in the closing game. Guerre crossed Washington State's goal line twice and Chandonis added the clincher with less than five minutes to go to spill the Cougars, 26-20.

Biggie Munn Appointed
It was at a banquet following this game that genial Charley Bachman offered his resignation. Later in the year Biggie Munn was named to take the reins.

Ben Van Alstyne's basketball squad played some brilliant ball but had enough off nights to wind up with an 11 win, 10 loss season.

Tony Waldron and Ollie White gave Van an experienced pair for the guard spots, while Robin Robinson was his performance in Pennsylvania that really sent "Little Dynamite" on his way to stardom. After successive losses to Cincinnati, Kentucky, and Michigan, State suddenly developed a double-barreled attack with Guerre and Lynn Chandonis carrying the mail.

Following the 55-7 Michigan debacle, Guerre and Chandonis flashed against Marquette, scoring once each as MSC tallied a 20-0 victory over the Hilltoppers.

Maryland came here the following Saturday and saw Guerre, Chandonis, and Jim Blenkhorn pour on the heat to topple the Terrapins, 28-14.

If proof were needed of the potency of the "touchdown twins," Guerre and Chandonis provided it in the closing game. Guerre crossed Washington State's goal line twice and Chandonis added the clincher with less than five minutes to go to spill the Cougars, 26-20.

Biggie Munn Appointed
It was at a banquet following this game that genial Charley Bachman offered his resignation. Later in the year Biggie Munn was named to take the reins.

Following the 55-7 Michigan debacle, Guerre and Chandonis flashed against Marquette, scoring once each as MSC tallied a 20-0 victory over the Hilltoppers.

Maryland came here the following Saturday and saw Guerre, Chandonis, and Jim Blenkhorn pour on the heat to topple the Terrapins, 28-14.

If proof were needed of the potency of the "touchdown twins," Guerre and Chandonis provided it in the closing game. Guerre crossed Washington State's goal line twice and Chandonis added the clincher with less than five minutes to go to spill the Cougars, 26-20.

Biggie Munn Appointed
It was at a banquet following this game that genial Charley Bachman offered his resignation. Later in the year Biggie Munn was named to take the reins.

Ben Van Alstyne's basketball squad played some brilliant ball but had enough off nights to wind up with an 11 win, 10 loss season.

Tony Waldron and Ollie White gave Van an experienced pair for the guard spots, while Robin Robinson was his performance in Pennsylvania that really sent "Little Dynamite" on his way to stardom. After successive losses to Cincinnati, Kentucky, and Michigan, State suddenly developed a double-barreled attack with Guerre and Lynn Chandonis carrying the mail.

Following the 55-7 Michigan debacle, Guerre and Chandonis flashed against Marquette, scoring once each as MSC tallied a 20-0 victory over the Hilltoppers.

Maryland came here the following Saturday and saw Guerre, Chandonis, and Jim Blenkhorn pour on the heat to topple the Terrapins, 28-14.

If proof were needed of the potency of the "touchdown twins," Guerre and Chandonis provided it in the closing game. Guerre crossed Washington State's goal line twice and Chandonis added the clincher with less than five minutes to go to spill the Cougars, 26-20.

Biggie Munn Appointed
It was at a banquet following this game that genial Charley Bachman offered his resignation. Later in the year Biggie Munn was named to take the reins.

Ben Van Alstyne's basketball squad played some brilliant ball but had enough off nights to wind up with an 11 win, 10 loss season.

Tony Waldron and Ollie White gave Van an experienced pair for the guard spots, while Robin Robinson was his performance in Pennsylvania that really sent "Little Dynamite" on his way to stardom. After successive losses to Cincinnati, Kentucky, and Michigan, State suddenly developed a double-barreled attack with Guerre and Lynn Chandonis carrying the mail.

Following the 55-7 Michigan debacle, Guerre and Chandonis flashed against Marquette, scoring once each as MSC tallied a 20-0 victory over the Hilltoppers.

Maryland came here the following Saturday and saw Guerre, Chandonis, and Jim Blenkhorn pour on the heat to topple the Terrapins, 28-14.

If proof were needed of the potency of the "touchdown twins," Guerre and Chandonis provided it in the closing game. Guerre crossed Washington State's goal line twice and Chandonis added the clincher with less than five minutes to go to spill the Cougars, 26-20.

Biggie Munn Appointed
It was at a banquet following this game that genial Charley Bachman offered his resignation. Later in the year Biggie Munn was named to take the reins.

Ben Van Alstyne's basketball squad played some brilliant ball but had enough off nights to wind up with an 11 win, 10 loss season.

Tony Waldron and Ollie White gave Van an experienced pair for the guard spots, while Robin Robinson was his performance in Pennsylvania that really sent "Little Dynamite" on his way to stardom. After successive losses to Cincinnati, Kentucky, and Michigan, State suddenly developed a double-barreled attack with Guerre and Lynn Chandonis carrying the mail.

Following the 55-7 Michigan debacle, Guerre and Chandonis flashed against Marquette, scoring once each as MSC tallied a 20-0 victory over the Hilltoppers.

Maryland came here the following Saturday and saw Guerre, Chandonis, and Jim Blenkhorn pour on the heat to topple the Terrapins, 28-14.

If proof were needed of the potency of the "touchdown twins," Guerre and Chandonis provided it in the closing game. Guerre crossed Washington State's goal line twice and Chandonis added the clincher with less than five minutes to go to spill the Cougars, 26-20.

Biggie Munn Appointed
It was at a banquet following this game that genial Charley Bachman offered his resignation. Later in the year Biggie Munn was named to take the reins.

Ben Van Alstyne's basketball squad played some brilliant ball but had enough off nights to wind up with an 11 win, 10 loss season.

Tony Waldron and Ollie White gave Van an experienced pair for the guard spots, while Robin Robinson was his performance in Pennsylvania that really sent "Little Dynamite" on his way to stardom. After successive losses to Cincinnati, Kentucky, and Michigan, State suddenly developed a double-barreled attack with Guerre and Lynn Chandonis carrying the mail.

Following the 55-7 Michigan debacle, Guerre and Chandonis flashed against Marquette, scoring once each as MSC tallied a 20-0 victory over the Hilltoppers.

Maryland came here the following Saturday and saw Guerre, Chandonis, and Jim Blenkhorn pour on the heat to topple the Terrapins, 28-14.

If proof were needed of the potency of the "touchdown twins," Guerre and Chandonis provided it in the closing game. Guerre crossed Washington State's goal line twice and Chandonis added the clincher with less than five minutes to go to spill the Cougars, 26-20.

Biggie Munn Appointed
It was at a banquet following this game that genial Charley Bachman offered his resignation. Later in the year Biggie Munn was named to take the reins.

Michigan State college offers a broad program of intramural sports covering the entire school year for men who are not out for varsity teams.

Under the direction of Ed Pogor, intramural athletics last year fully recovered from the war-time doldrums and in most aspects surpassed the activity of any preceding year.

Tournaments or league competition in eleven sports were on the regular intramural schedule plus the interfraternity activities list.

DZY Topped Football
DZY, powerful independent athletic brotherhood, opened the fall campaign by grabbing three all-college touch football championships with a smashing 35-27 defeat of Quonset K.

Sigma Nu won the interfraternity grid title in a thrilling 25-19 battle with Alpha Tau Omega.

The Whiskers rolled over Mason 6, 32-20, for the all-college basketball title. Sigma Nu fraternity captured the interfraternity crown by virtue of a 16-13 victory over Alpha Tau Omega.

In bowling, it was Sigma Nu against ATO for the third time. A three-game playoff saw ATO fall by a 102-point margin.

Phi Delta Wins Four
Backing the Sigma Nu domination Phi Delta Theta shot into the fray, spotlight by taking successive championships in swimming, track, golf and tennis.

Bob Tansy tried a 74 to win the all-college golf tournament by four strokes over Ray Nowman and Don Vantine.

The following men won championship medals in the all-college wrestling tourney: 121 pounds, Jack Kreiner; 128, Gene McDonald; 136, Dick Dickenson; 145, Bill Mowery; 155, Don Johnson; 165, Pat Sullivan; 175, Jerry Brenner; heavyweight, Don Goldsmith.

Fourteen medals were awarded. See MURAL, Page 19.

State's record included wins over Georgia Tech, Wayne, Syracuse, Marquette, Virginia, Boston College and Detroit.

On the loss side were smashing defeats by Notre Dame, twice; Kentucky, Ohio State, Arizona, Michigan twice, Wisconsin, Minnesota and DePaul.

Swimmers Sparkled
While the cagers were having trouble, the wrestling and swimming teams were compiling brilliant records.

See HIGHLIGHTS, Page 16.

Spartan Teams Rack Up 644% For 1946-47

Michigan State athletic teams turned in a total of 84 victories against 49 losses in intercollegiate competition during the 1946-47 sports year for a 644 record.

Only one team, football, fell below the 500 mark. Four teams won more than two-thirds of their contests.

Track displaced baseball as the most successful State squad. Coach Karl Schlademant's tinclads copied 10 of 12 meets indoors and out for an overall average of 823.

The trackmen's record gained additional luster with a slam of the Central Collegiate conference indoor and outdoor track championships plus second place in the IC-4A.

Swimming followed with 818. The poolmen also won in the Central Collegiate — the fifth straight CCC crown for MSC natators. Coach MacCaffree's team tallied over 100 points, the largest winning total in the meet's history.

The main gymnasium is on the third floor. It has three basketball courts, volleyball and badminton courts, fencing room and tumbling rooms.

Boxing and wrestling rooms are located on the fourth floor along with storage rooms for the equipment. Here also is the Varsity Club room.

The fieldhouse section is at the rear of the gymnasium. The floor is clay. The oval for indoor track is 220 yards long with six 30-inch lanes. For the 75 yard dash and hurdles, eight 48-inch lanes are available.

The 60 by 100 foot portable basketball court is set up in the middle of the fieldhouse floor. Spectator seating is provided by 4,500 balcony seats with bleachers up to an additional 8,000 seats installed between the balcony and the court.

Macklin Field
The football stadium, built in 1923 and named Macklin field in honor of John Farrell Macklin, athletic director and coach of all sports from 1911-1916, is a con-

Michigan State Football Squad Faces Tough Nine-Game Card

Guards Practice For Season



Merv Pregulman, former U. of M. star under Biggie Munn and temporary aide to Munn at the spring practice, looks on as Mark Blackman and Ed Hagdon prepare to go into some blocking practice. Blackman and Hagdon are outstanding line candidates this fall.

(Right) Munn and Captain-Elect Bob McCurry discuss plans for the 1947 campaign while checking up on the condition of Macklin field. McCurry, varsity center, is the first Spartan to be named captain for a full season since the practice was discontinued in 1932 in favor of selecting game captains.



Spartan Athletic Facilities Rank With Nation's Best

The Michigan State college athletic plant is one of the most modern and best equipped in the country. All physical education buildings and grounds are available for student use except when being used for classes and squad practices.

Located on a fieldhouse, the new bowl seating about 26,000. Plans have been made to enlarge the stadium and build a dormitory beneath the stands. This project, due for completion in 1950, will increase the capacity to about 30,000.

The outdoor track is a quarter mile in length with two 220-yard straightaways. Bleachers seat 1,500.

Old College field provides space for varsity, junior varsity and freshman baseball teams, plus varsity and freshman football practice fields, night football practice field, intramural softball and touch football fields and physical education fields.

The varsity baseball diamond is equipped with stands having a seating capacity up to 5,000 spectators.

On the second floor are offices of the coaching and teaching staffs, business offices, classrooms and adapted sports gymnasium.

Basketball Practice Courts
The main gymnasium is on the third floor. It has three basketball courts, volleyball and badminton courts, fencing room and tumbling rooms.

Boxing and wrestling rooms are located on the fourth floor along with storage rooms for the equipment. Here also is the Varsity Club room.

The fieldhouse section is at the rear of the gymnasium. The floor is clay. The oval for indoor track is 220 yards long with six 30-inch lanes. For the 75 yard dash and hurdles, eight 48-inch lanes are available.

The 60 by 100 foot portable basketball court is set up in the middle of the fieldhouse floor. Spectator seating is provided by 4,500 balcony seats with bleachers up to an additional 8,000 seats installed between the balcony and the court.

Macklin Field
The football stadium, built in 1923 and named Macklin field in honor of John Farrell Macklin, athletic director and coach of all sports from 1911-1916, is a con-

No coach has been selected for the sport as yet. Young stated. He added that the man chosen would be among the best in the field.

Periodic staff-quarterback candidate meetings weeks before spring training opens. Munn started this system last spring.

Returning home the Green and White will entertain Mississippi State, McWilliams and company. Coach Allyn McKee is bewailing the loss of five starters from the squad that paled by eight wins against two setbacks. The line must be rebuilt, but the backfield is convincing. Besides the speedy McWilliams, the Maroons have Wallace "Eagle" Matulich.

Matulich made a dismal rainy day more miserable for Spartans last year when he smashed the State line for the game's only score and then was ornery enough to keep State far back with his coffin-copier punts. No breather here.

A long trip follows as the Spartans travel to Pullman, Wash., for a encounter with the Cougars of Washington State.

Coach Phil Soebe will have 21 other men back from 1946, among them will be Don Paul and Bill Lippincott, a terrific passer, who left unpleasant memories at Macklin field last fall.

The Cougars will employ not only the complicated "T" but a novel and more complex "double T" formation in an effort to settle accounts after losing to State 26-0 last year.

Homecoming will give the grads a chance to see the Alma Mater in action against Iowa State. A new team on the Spartan schedule.

Abie Stuber will be serving his first year as coach of the Cyclones and will begin minus 12 aftermen from last year's squad, but with plenty of reliable help left kicking around.

The Cardinal and Gold are a member of the Big Six and although unheralded, the last time they were called a breather they notched powerful Northwestern 15-0.

The Bearcats of Kentucky move into Macklin field Oct. 25. Coach Paul Luyant's boys left Spartan rosters with no fond memories last year, when after trailing 14-13, they became almost as convincing as Michigan coming out on top 34-14.

"Wah Wah" Jones, sensational end, tops a list of seven returning starting-line men.

Marquette drops in the following week, smoking with revenge at the 20-0 lacing handed them by the Green and White last year. Coach Frank Murray is well acquainted with his 30 returning lettermen and they with his intricate "T" formation.

The air minded Hilltoppers will bring Rudy Roysten, one of the outstanding passers in the nation last year, to Macklin field. Last season Spartan fans were deprived of the pleasure.

The final home game presents another newcomer to the MSC schedule, when Coach Len Casanova brings his Broncos of Santa Clara across the nation to resume an old grid rivalry.

A nucleus of returning lettermen and some newcomers topped by the fleet-footed Hall Haynes, rates the Broncos as simply tough. Lou Zarza also returns as a friendly enemy.

Away to Philadelphia, Pa., the Green and White invade Temple. See FOOTBALL, Page 16.

"Spartans Open In Ann Arbor Against U-M.

Workouts Stated To Last 24 Days

September 3 has been listed as opening day for grid practice at MSC. That gives Coach Biggie Munn and staff just 24 fleeting days in which to prepare a squad to withstand a grueling nine-game schedule.

Opening at Ann Arbor the Spartans undoubtedly play their toughest game of the entire season. Coach Fritz Crisler moans that he has a light squad and has lost a galaxy of stars through graduation and the professional ranks.

But one look at the spring roster shows many names of men who were unkind to State in last year's disaster. Mentioning a few, Bob Chappuis, leading conference ground gainer, establishing a new record of 1,039 yards.

Gene Derricotte to alternate with Chappuis, "Bump" and Pete Elliot Howard Yerges, Dan Dworak, who may play center to bolster the only "weak" spot on the Maize and Blue. These are only a few.

Returning home the Green and White will entertain Mississippi State, McWilliams and company.

Coach Allyn McKee is bewailing the loss of five starters from the squad that paled by eight wins against two setbacks. The line must be rebuilt, but the backfield is convincing. Besides the speedy McWilliams, the Maroons have Wallace "Eagle" Matulich.

Matulich made a dismal rainy day more miserable for Spartans last year when he smashed the State line for the game's only score and then was ornery enough to keep State far back with his coffin-copier punts. No breather here.

A long trip follows as the Spartans travel to Pullman, Wash., for a encounter with the Cougars of Washington State.

Coach Phil Soebe will have 21 other men back from 1946, among them will be Don Paul and Bill Lippincott, a terrific passer, who left unpleasant memories at Macklin field last fall.

The Cougars will employ not only the complicated "T" but a novel and more complex "double T" formation in an effort to settle accounts after

Coed Sports Planned By College And WAA

Coeds at Michigan State college will find many college-sponsored sports planned for them.

Under the direction of Miss Dorothy Parker of the women's physical education staff, women compete in an intramural program which includes such sports as hockey, bowling, soccer, swimming, basketball, softball, badminton and tennis.

Leagues And Tournaments

Teams are engaged from dormitories, fraternities, off-campus residents and other independent units. League competition is sponsored in some sports; others are run on a tournament basis.

Playoffs are conducted to determine the all-college champions in the various sports.

Miss Parker is also faculty advisor for WAA, the Women's Athletic Association. WAA sponsors group sports such as hiking, swimming, soccer.

Points Awarded

Women are awarded points for attending practice sessions and for competing in meets of any kind.

The goal of all WAA members is a total of 1500 points. Women who attain this goal are allowed to sign the WAA honor roll.

Spartan Aide



Dale Stafford, managing editor of the Detroit Free Press was named alumni representative on the Michigan State college athletic council this summer. Stafford was graduated from State in 1931.

FOOTBALL

(Continued from Page 15)

stadium for a rematch with the Huskies.

The game will be held in the stadium at 10:30 a.m. Forging the Cherry and White uniforms will be Phil (Sonny) Shoberg, considered one of the better backs in the East and Midwest. Indian day, Neimaw, follow the band to the game.

Winning the 1947 season, the Spartans cruised to beautiful victory Hawaii for an encounter with Hawaii.

If the Pineapple Pickers are as tough as their names are to spell, this one will be tight all the way. Coach Thomas Kaulukukui starts his second year at Honolulu with outstanding returns like co-captains Sadao Watasaki and Luke Uchima, both Jackies.

That's the reputation of 1947 football for the Spartans gridiron. Now you have five weeks to consider these lungs for some juicy cheering.

Highlights Of 1946-47

(Continued from Page 15)

Coach Charles McCaffrey's nat'lators lost only to Michigan and Ohio State and turned in smashing victory in the Central Collegiate championships.

George Hoogerhyde, in his first year of college swimming competition, won the National collegiate 1500 meter crown in record shattering time. He added a second in the 220 and a fourth in the 440 to total 12 points.

Mikes Champ Again

The Spartan wrestling squad, coached by Fendley Collins, won seven and lost three. Captain Gale Mikes took his second national championship, while the team was taking fourth place in the National collegiate. Mikes was undefeated during the regular season.

Coach Karl Schlademan produced his finest track squad both indoors and outdoors. State lost only to Michigan indoors and to Ohio State on the outdoor path.

The Spartans held a win over the Buckeyes in the opening meet of the indoor season. They avenged the indoor loss to Michigan by turning in a sparkling victory over the Wolves outdoors.

Dianetti Starred

Three outstanding stars and a host of lesser lights appeared on the track roster. Jack Dianetti, 18-year old freshman "Rocket" turned in several doubles with firsts in the mile and half mile.

Dianetti paced the Spartans to their first Central Collegiate indoor championship in 13 years by winning the quarter and half.

On May 12 he became the 30th miler in history to cover the distance in 4:12 or better as he finished second to Jerry Karver in a dual meet at Penn State.

Freshman Fred Johnson shattered all Michigan State records for the broad jump and twice turned in triple firsts indoors.

Johnson Tops In IC-4A

Johnson led the State contingent to second place in the IC-4A meet at Philadelphia, winning the broad jump and 220 yard low hurdles and finishing second in the 100 yard dash.

Bob Schepers turned in one of the greatest winning streaks ever recorded for a Spartan trackman. Running both the 100 and 220 yard dashes he sprinted home in front 10 successive times in the outdoor season.

Sam Zarza's ringmen won four bouts while losing two for a winning percentage in the second year of boxing after a war-time lapse.

At 135 pounds, Chuck Davey put the final shine on his undefeated college record by winning a National collegiate title for the second time. Davey was 127

pound titlist in 1943 before entering the air corps.

Fencers Won Five

The fencing squad won five matches and lost three for one of

Coach Charles Schmitter's most successful seasons.

Coach "Jake" Dahlgren's tennis

lost 14 of 18 meets to pile up an 11-6 record.

John Kobs turned out another high-flying diamond rime. The 1947 edition won 16 games and

lost eight for a .667 record against some of the nation's toughest college outfits.

The Kobsmen got off to a start with seven victories in a row. See SPORTS, Page 15

CLOTHES

Brought In MONDAY or TUESDAY — Returned FRIDAY

For FAIR and FRIENDLY SERVICE

Remember

COLLEGE CLEANERS

301 ABBOTT ROAD

THE SMOKE SHOP

"Where the Fellows Get Together"

FOR 30 YEARS Charley Washburn's SMOKE SHOP has been the meeting place for M.S.C. men — for tobacco, for recreation and for just plain bull sessions.

YOU'LL LIKE the friendly Spartan Spirit of the SMOKE SHOP. You'll enjoy the billiard tables and the lunch counter. The SMOKE SHOP is one place where you can find nearly anything you need.

TOBACCO — MAGAZINES — PIPES — LIGHT LUNCHES — SCHOOL SUPPLIES

TOILET ARTICLES — LAUNDRY SERVICE

You'll Want To Get Into The
Smoke Shop Tradition

Gards WINDOWS WILL SHOW YOU ----

How to Rate
"A"
For Appearance

RAINCOATS
TOPCOATS
SOCKS
SPORTCOATS
SHIRTS
SWEATERS
HATS
SPORT SHIRTS
SHOES
SLACKS

NATIONALLY ADVERTISED BRANDS
STYLE LEADERS ALL

STOP IN TO SEE JUST
WHAT WE MEAN AND
SAY HELLO — WHILE
YOU ARE BROWSING
AROUND ASK FOR
ONE OF OUR FREE
PANT HANGERS. THEY
WILL KEEP YOUR
SLACKS IN TIP TOP
SHAPE.

WINTHROP SHOES

Gards
MEN'S SHOP
At the Campus

1.500 While They Last—No Charge

Nothing trends for men

Old Clothes Become Part of New Wardrobe At Michigan State

By JOHN J. ALBERT

Don't make a mistake like the freshman who spent two months and all his money gathering a wardrobe, he considered suitable for college. What you wore in high school, at work, along with some of your service clothing will do the trick at State. Although it's no longer difficult to obtain new garments, it is wise to keep your present wardrobe in better than average condition, which in the longer run will be a great saving to you.

It is often the case that fashions are created on the campus, if you are not sure about what to wear, it is always a good plan to wait until you have arrived at State and looked things over before completing your wardrobe.

There are many men's shops in the immediate vicinity where you can obtain satisfaction.

Extremes are often a fad in clothing and some feel it their duty to fall in line or be excluded from the social group. The flashy sport coat or weird shoes are examples, and while they may have their place, if they don't fit in with what you have, the money is better spent on some substantial accessories.

Fast Lansing weather isn't always a pleasant conversation topic and you'll find that we have more than our fair allotment of rain. Come prepared so you won't find yourself cursing the day you left your rubbers behind. If you own a pair of four buckle arctic shoes, throw them in your trunk, you won't regret carrying the extra weight.

Summer and early fall weather is on the way and with it will be not only zero temperatures but plenty of snow. Now is a good time to check your foul weather gear. Take inventory and see what you may want to add. One of those sharp plaid, wool coats that fill the bill both for use and the dropping mercury. A variety of styles and colors can be found in any store. You can beat the coeds to the center.

Field jackets are popular for outdoor activities when it becomes a bit chilly. A parka or navy bridge coat is a welcome item to have on when you are in the cold stands watching the Spartan eleven trim our rivals. Many feet turn blue and toes become frigid during late fall grid contests so extra warm footwear can't be neglected.

Fly front covert and gabardine coats hold sway as an outer garment to wear to dances and for dressy affairs. For colder days coats with removable lining are the thing to make you feel comfortable. Overcoat styles cover a wide range and both single and double breasted models are popular. Favorite colors are grey, blue,

The energy that a bullet exerts in an animal depends on its construction, and whether or not it completely penetrates the animal's vital organs.

and brown. Belted models aren't common on any college campus—the students favor loose back types which look and are roomy. Gabardine, flannel, covert and tweed are still the favorites in suit materials. For casual wear corduroy tops the list, with light weight loafer coats running a close second.

Longer lapels are the keynote in the double breasted suits better known as lounge models. Both three button and two button types are extremely popular in singles. In the Eastern colleges narrow lapels are accented, at State we find both narrow and wide lapels and, since the advent of the cardigan, many collarless coats.

Sport coat colors cover the spectrum as do styles and patterns. Herringbones, diagonal weaves, sandwich stripes, overchecks, glen plaids, and solid colored coats are all worn. So, you see, almost any sport coat you now have will be right in style here. Browns and tans apparently are top sport coat colors but threatening their popularity are grey and blue.

Sweaters of all types are popular, with "V" necks holding the honor spot. It is difficult to determine which colors are most in demand. Light blues and greens top the list with natural, wine, grey and yellow following. No matter what the color or type you'll find plenty of use for your sweaters on campus.

Accessories in hand tooled leather are the last word in ruggedness, with plain cowhide and pigskin well up on the list. For those of you who wear suspenders the wider the better seems to be the theme. In wide suspenders repp striped elastic is considered very sharp with thin suspenders in leather crowding the top of the list. Knitted braces have been a favorite for years and many are worn by your fellow Spartans.

Oxfords and broadcloths are on the button down oxford leaders in shirt materials with far ahead of other styles the perennial college man's favorite—spread collars are the ticket for

that man of the hour appearance. It's wise to have both button downs and spreads included in your wardrobe, if possible.

Feet are the prime means of locomotion at State so don't mistreat your pedal extremities. Follow the old rule of quality before quantity, and your feet will last long after the day you receive your sheepskin.

For your treks around campus a pair of substantial brown shoes is both popular and necessary and will be put to good use if you are taking military science. Saddles and red rubber soled white buck are coming back in ever increasing numbers and are vying with loafers for the number one spot in the favorite footwear section.

For casual shoes ruggedness is stressed in many appealing styles. For dress wing tip and plain toe brogans lead the way.

Socks may range from loud to screaming with argyles rated tops, except for a few pair of moderate ones for dress wear.

Knitted ties in solid colors and stripes fit almost any occasion at State. For affairs with emphasis on dress you might wear a repp stripe or a foulard.

It is not compulsory that you follow the fashions, so whether you come in the latest lounge drape or a pair of overalls—with a Windsor knot or an open collar—work shirt, you'll find a real home at Michigan State.

HORSE BACK RIDING

Reardon's

RED CEDAR STABLES

- GROUP RIDES
- MOONLIGHT RIDES
- PRIVATE and CLASS LESSONS
- COMPETENT INSTRUCTORS
- 25 WELL-TRAINED HORSES

Phone 8-3217 for Appointment

MICHIGAN AT HARRISON ROAD

You'll Need THE KERNEL

(SEE, PAGE 18)

MICHIGAN STATE COLLEGE

Beside the Winding Cedar

Serving the youth of Michigan and the nation as a great university to secure the training necessary for a successful career in the world of today.

There are more than seven hundred highly trained men and women to help the freshman starting in this great college to achieve their goal. The future of America depends upon you . . . the younger generation, to be the leaders of tomorrow.



THE SPARTAN
"SENTINEL OF THE CAMPUS"



We are proud of the fact that we have served Michigan State college and her students with authentic athletic equipment for years. And anytime we can be of service to you freshmen just stop in our store.

VANDERVOORT SPORT EQUIPMENT

213 E. Grand River Ave., East Lansing

VANDERVOORT HARDWARE COMPANY
MICHIGAN AVE. AT GRAND LANSING

WELCOME

and

SMALL'S



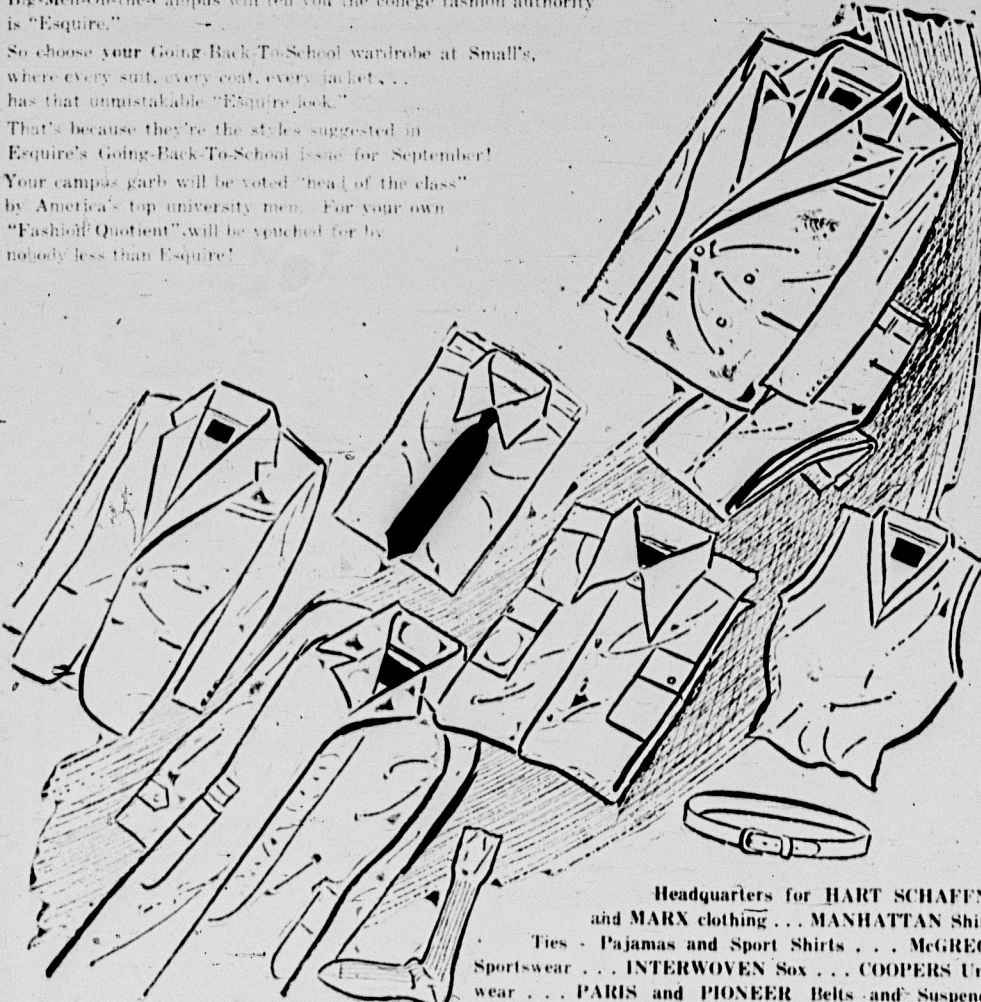
G.B.T.S. wardrobes "as seen in Esquire"

Big-Men-On-the-Campus will tell you the college fashion authority is "Esquire."

So choose your Going Back-To-School wardrobe at Small's, where every suit, every coat, every jacket . . . has that unmistakable "Esquire look."

That's because they're the styles suggested in Esquire's Going-Back-To-School issue for September!

Your campus garb will be voted "best of the class" by America's top university men. For your own "Fashion Quotient" will be punched for by nobody less than Esquire!



Headquarters for HART SCHAFFNER and MARX clothing . . . MANHATTAN Shirts . . . Ties . . . Pajamas and Sport Shirts . . . MCGREGOR Sportswear . . . INTERWOVEN Sox . . . COOPERS Underwear . . . PARIS and PIONEER Belts and Suspenders.

SMALL'S

211 SO WASHINGTON

MICHIGAN THEATER BUILDING

The Store that Provides All Your Apparel Needs for Business • Recreation • Travel • Adventure

Patronize State News Advertisers

1947 Football Schedule

Sept. 27—Michigan
Oct. 4—Mississippi State*
Oct. 11—Washington State
Oct. 18—Iowa State*
Oct. 25—Kentucky*

Nov. 1—Marquette*
Nov. 8—Santa Clara*
Nov. 15—Temple
Nov. 29—Hawaii
* denotes home game

WELCOME
FRESHMEN

For snappy cab service
give us a ring at 8-3561

8 New Cars to Serve You
STATE CAB CO.

Andy's Barber Shop

Invites you to enjoy the best barber
service in town at the most reason-
able prices.

• No Waiting •

(Downstairs From Vandervoort's)

H. KOSITCHEK & BRO.

LANSING'S LARGEST MEN'S STORE

—MAIN FLOOR—

CLOTHING—

- VARSITY TOWN
- KUPPENHEIMER
- MICHAELS-STERN
- G. G. G.
- SAVILLE STREET
- DEVONSHIRE

FURNISHINGS

- MANHATTAN SHIRTS
- FAULTLESS PAJAMAS
- INTERWOVEN HOSE
- PARIS BELTS
- MACCURRAH TIES
- KNOX HATS

SPORTS WEAR—BASEMENT

LARGEST STOCK OF TROUSERS
IN MICHIGAN

- SPORT SHIRTS
- TEE SHIRTS
- SWEATERS
- SPORT HOSE
- SPORT COATS
- JACKETS
- WARM COATS
- RAIN COATS

Tux - Tails - All Accessories

H. Kositchek and Bros.

112 N. WASHINGTON

They Rank High On MSC Star List

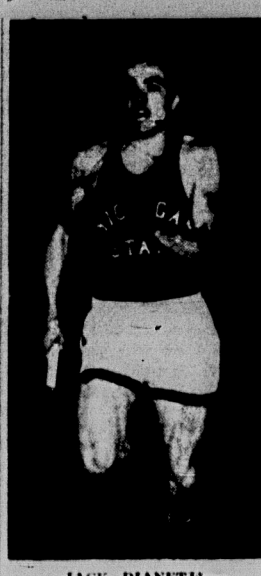
The three men shown here have outstanding records as members of Michigan State college athletic teams. This gallery, of course, is not a complete list of the greatest Michigan State athletes.

No such list would be complete without the names of such men as boxer Chuck Davey and wrestler Gale Mikels, both two-time National Collegiate titlists.

Another top-ranking Spartan is



ROBIN ROBERTS
Cage and Diamond Ace



JACK DIANETH
Sensational Mile



GEORGE GUERRE
Explosive Runner

swimmer George Hoogeflynde, freshman sensation of the 1947 NCAA swimming meet.

Guerre and Chandraols were the prongs of a double-pointed Michigan team grid offense last fall and are expected to

carry the mail at critical moments again this year.

Guerre was on the spot from the moment he first appeared on Mackin field. His job was to fill the shoes of left halfback Russ Reader, one of the top backs in the nation in 1945.

light up with the "that championship material" look.

Dianeth turned in a double victory in the quarter and half mile races during the indoor Central Collegiate here to pace State to its first title in 12 years.

Robin Roberts has been of the top stars on both basketball and baseball for two years.

A smooth shot-maker, he received the Detroit Free Press "Michigan Basketball Player of the Year" award at the conclusion of the 1946 cage season. Roberts was the workhorse Coach John Koba pitching this spring, winning seven of three losses.

Welcome
SPARTAN FROSH
TO YOUR
UNION
BOOK
STORE

in the
UNION BUILDING

A non-profit organization owned and operated by Michigan State College as a service to the student community.

BOOK SUPPLIES
STATIONERY
CLASS ROOM
MATERIALS

YOUR HEADQUARTERS

for
CLOTHING and SPORTING
GOODS NEEDS

SHIRTS - SLACKS - SPORT COATS
ATHLETIC EQUIPMENT

LEN KOSITCHEK'S

Varsity Shop
223 E. GRAND RIVER, E. L.
"Highest Quality - Lowest Prices"

AVOID
Those Long Waits
— visit the —
M.S.C. Barber Shop
Central Michigan's
Most Modern Barber Shop
SHOE SHINING — 8 CHAIRS
209 M.A.C. AVENUE

EAST LANSING PHARMACY

"The Friendly Store on the Hill"
Rosewood at Grand River East Lansing

WELCOME NEW SPARTANS

WE NOW OFFER PHOTO FINISHING DELIVERED TO YOUR HOME.
COME IN OR CALL 8-3111 ABOUT OUR NEW SERVICE.

PHOTO FINISHING

PHOTOGRAPH ALBUMS

GREETING CARDS

STATIONERY

TWO STORES TO SERVE YOU

LINN CAMERA SHOP

207 East Grand River

ACROSS FROM THE UNION

THE FACTS OF LIFE
FOR FRESHMEN

Start your college life the easy way by knowing your way around the town you'll make your home for four years.

It's easy to do. Merely subscribe to "The Kernel," the all-inclusive weekly amusement magazine that contains Lansing's entertainment in a nutshell.

Here's what you'll get:

- A theatre calendar to show you what's playing at all Lansing theatres every day in the week.
- A complete, up-to-date guide to Lansing's sport, food and night-spot attractions.
- A complete daily radio log including all local stations and major networks.

Prepare yourself for after-study fun now. Fill out the blank below and send with \$1.50 for a full year's subscription to "The Kernel."

Name

College Address

City

THE KERNEL

195 E. Michigan Avenue
Lansing 16, Michigan

INTER-FRATERNITY COUNCIL SMOKER

THURSDAY EVENING, OCTOBER 2, 1947 — 7-9 p.m. — UNION BALLROOM

SPONSORED BY INTER-FRATERNITY COUNCIL AND:

ALPHA EPSILON PI
ALPHA GAMMA RHO
ALPHA TAU OMEGA

DELTA CHI
DELTA RHO
DELTA SIGMA PHI

DELTA TAU DELTA
FARMHOUSE
KAPPA SIGMA

LAMBDA CHI ALPHA
PHI DELTA THETA
PHI KAPPA TAU

PI KAPPA PHI
PSI UPSILON
SIGMA ALPHA EPSILON

SIGMA CHI
SIGMA NU
SIGMA ZETA
THETA CHI

MSC Harrier Squad Expected Stronger

Michigan State's 1947 cross country team will be stronger than the 1946 aggregation, according to Coach Karl Schladerman.

"This year's team will be better than last year's, but it will be the weakest of State's three track teams," the veteran mentor predicted.

Only one member was lost from the squad that broke even in four meets last year: Walt Mack, veteran State cinderpath ace, was graduated this spring.

I is not expected that Mack's absence will be felt too keenly, for he had been troubled by foot injury incurred in service and did not succeed in regaining the form that once made him the schools top trackman.

Dianetti Starts

Heading the list of 16 candidates who will be invited to begin practice Sept. 22, is the name of Jack Dianetti, 19-year old sophomore from East Rochester, N. Y. Dianetti came here last fall, heralded as the "king of prep miles." He lived up to his advance billing in full measure. Running cross country for the first time he snared a first, two seconds and a third.

He was one of the main factors in the highly successful seasons

enjoyed by both the indoor and outdoor track teams, winning races over the quarter mile and mile routes.

Captain May Not Run

Included in the list of returnees are Jim Gibbard, Clark Atchison, Bob Sewell and Capt. Elmer Ed Kuczenski. The first three had successful seasons on the track squads.

Schladerman said, however, that the caliber of the returning lettermen is high enough to in all probability keep Kuczenski from occupying a place on the first team.

Among the additions to the squad is Gilbert Hunt, Buffalo, N. Y. sophomore. Hunt was a high-ranking competitor in high school, but was kept out of action last year by a broken leg.

Hunt will be out again this fall, and according to Schladerman, may turn out to be a top-flight member of the squad.

PATRONIZE STATE NEWS ADVERTISERS

'Mural Sports Program Expanding

(Continued from Page 13)

to boxing winners in seven classes of the senior and novice divisions. Highlight of the tournament was a one point victory by Dan Hickey over Joe Thayer at 155 pounds.

Hickey became a member of the varsity boxing squad and won two bouts while a third wound up in a draw. After spring term, the flashy little welterweight decided to enter the professional ranks. He has had two pro bouts, winning them both.

Hickey acted as sparring partner for Tony Zale, when the Gary "Man of Steel" was training for the bout in which Rocky Graziano lifted the middleweight title with a sensational sixth-round knock-out.

In a field of 109 teams softball largest ever assembled for any mural sport, Snyder 18 and TCA became finalists in a one-loss elimination tournament. The men from Snyder cracked the TCA

couplet, 6-2, for the all-college title. Sigma Nu returned to the headlines by winning its fourth fraternity crown of the year with a 2-1 victory over, as usual, Alpha Tau Omega to clinch the sports year.

Summer term saw Don (Tony) Wa'dron, star of MSC grid and basketball teams win his second all-college tennis title with a clear-cut, 6-1, 6-3, victory over Jack Van Wagener in the final round of the college-sponsored tourney of the term.

The State News sponsored all-college tournaments in bowling—winter term—and golf—summer term.

Jack Gale, Muskegon junior, rapped out a 601 for first place and top prize of \$45 in the bowling tourney, which attracted 142 kiegler. A total of \$170 in prizes was randed out to the top 16 men in the second annual classic. Matel Golf Champ The News golf tournament

summer term, drew 81 entries, who qualified for the 18-hole tourney in three flights.

Joe Matel copped the championships trophy with a sterling two-over par 72. Dick Lang won the first flight cup after a 14-hole play-off with John Gunderson following a first place tie between the two at 80.

Jim Trebilcock knocked 23 strokes off his qualifying score of 108 to finish on top in the second flight scramble with an 83.

Non-farm real estate foreclosures are on the upswing. There were 3,300 of them in the first quarter of 1947.

Sports Saw Good Season In '46-'47

(Continued from Page 16)

starts on the southern rip. Their only loss on the Dixie tour was a 4-3 thriller with North Carolina. Best Michigan Twice

The outstanding feature of the season for players and fans alike was probably the pair of victories over University of Michigan.

In 1946 the Wolverines had trimmed the Spartans twice. But this year State squeezed out a 2-1 victory in Ann Arbor. When Michigan came here, the heat was really on and MSC dumper base-

hits all over the place to drub their traditional foes 8-1.

Van Alstyne, who spends spring term on the golf course producing a links squad, saw his men have a disastrous season.

Tansey Whipped Barclay

The Spartans were handicapped by bad weather conditions in preparing for their schedule and won only four meets while dropping six.

Bob Tansey, number one golfer, compiled a neat 75-stroke average for the season. Tansey won 2 1/2 of 3 points from Dave Bar-

clay. Michigan's ace Barclay later went on to win the National collegiate championship.

You'll Need
THE
KERNEL

(SEE PAGE 18)

PATRONIZE STATE NEWS ADVERTISERS

Follow Coach Biggie Munn
and
Those Spartans

MICHIGAN STATE COLLEGE FOOTBALL

- FIVE GAMES AT HOME
- FOUR GAMES AWAY

1947 SCHEDULE

Sat., Sept. 27—Michigan at Ann Arbor
Sat., Oct. 4—MISSISSIPPI STATE AT EAST LANSING
Sat., Oct. 11—Washington State at Pullman, Wash.
Sat., Oct. 18—IOWA STATE AT EAST LANSING (Homecoming)
Sat., Oct. 25—KENTUCKY AT EAST LANSING
Sat., Nov. 1—MARQUETTE AT EAST LANSING
Sat., Nov. 8—SANTA CLARA AT EAST LANSING
Sat., Nov. 15—Temple at Philadelphia
Sat., Nov. 20—U. of Hawaii at Honolulu, T. H.

Season Tickets for Five Home Games—\$10.00 (tax incl.)
Individual Home Game Tickets—\$2.50 (tax incl.)
(You save \$2.50 through the purchase of a season ticket)
Tickets May Be Ordered By Mail

Send Check or money order to:
Michigan State College Athletic Association
Jenison Fieldhouse, East Lansing, Mich.
Tel.: 8-1511, Extension 611



Captain Robert B. McCurry



Coach Biggie Munn

Bargain! Bargain! Bargain!

You save the price of one game ticket by ordering a season reserve ticket for \$10. Season ticket orders will be accepted up to October 1. Reserved seats will be in west stands. Purchasers may designate choice of high, low or medium seats, the same seats holding for the entire season. Tickets are transferable.

Follow Those Spartans Follow Those Spartans Follow Those Spartans Follow Those Spartans

Welcome Students

Start Your Campus Activities this Fall with the

Mich. State-U. of M.

Football Game at Ann Arbor
Saturday, September 27th

GET YOUR BUS TICKETS EARLY
\$1.90 one way \$3.45 round trip
Postal Money Orders Accepted

EAST LANSING BUS STATION

311 EAST GRAND RIVER
FRANK DEBOOS, Agent

We Can Sell Bus Tickets from Any Point to Any Point

SAVE TIME AND WORK WITH THE NEW 1947

Westinghouse
Electric Ranges

You're out of the scrubbing brigade for keeps—Westinghouse Electric Cooking is super-clean! You'll cook in minutes instead of hours—and win compliments on every meal. Or, complete meals can be cooked automatically while you're away. Enjoy the modern pleasure, and leisure, of a Westinghouse!



(Illustrated below is the Commander model R64-47)

East Lansing Electric Co.

136 W. GRAND RIVER AVE.

To the College Men of the Class of '51—



"Corduroy sport coats are sure to ring a bell this fall."



"MacGregor sweaters continue to be a campus must and a favorite."



HURD'S welcome you to East Lansing and their college store, where the smartest in college men's clothing is sold. All the very latest in styles and the best nationally advertised lines are here for you to see. Drop in, look around and let us get to know you.

We Have Been Serving State Men Since '15

HURD'S
LANSING AND () EAST LANSING

YOU CAN'T LEAVE DISSATISFIED

"ARROW SHIRTS a wide selection for you to choose from."

"A pair of grey flannel or Bedford cord trousers are in stride for class or casual wear."



THE COLLEGE DRUG STORE

Established in 1905

The Rexall Store

Opp. Your Beautiful Union Bldg.

— Welcomes You Again as We Have for the Past 42 Years —



The Only Drug Store in East Lansing For—
Rexall Famous Merchandise

Elizabeth Arden Toiletries
Tussy Toiletries
Houbigant Toiletries
Revlon Nail Polish
Chantilly Toiletries
Prince Matchabelli Perfumes
Courtley Men's Toiletries
"Botany" Toiletries
Parker "S", Famous Pens
Shaeffer Lifetime Pens
Eversharp Pens

All nationally advertised merchandise is sold at minimum, fair trade prices, at all times.

Your dollar goes farther at the College Drug Store



Follow THE CROWD

Join the throng that finds it a good idea to eat at The College Drug Store. Pleasant surroundings, an interesting, varied menu features to remember next time you're looking for a fine place to dine!

Extra Rich MALTED MILKS

35c

"Almost a meal in itself" . . . that's what they say about our thick, rich malteds . . . flavored the way you like them . . . cool and fully satisfying!

5 SCOOPS ICE CREAM

AN OUTSTANDING PEN VALUE!

NEW EVERSHARP CA PEN

FOR ONLY **\$6.95**

With all these fine writing features:

- Balls CA ink on . . . dry!
- Writes for 3 months to 3 years without refilling
- Always starts. Never starves.
- Reloads cleanly — with a CA Cartridge — in 15 seconds.

CA means Capillary Action Cartridge

\$6.95

FOR MEN

At 20 great Universities . . .
Voted the most-wanted pen for graduation . . .

Parker "51"

\$12.50

with Lustral cap

FOR MEN

50c AQUA VELVA	43c
50c Mennen's SKIN BRACER	43c
PREP	29c
50c WILLIAMS GLIDER	43c
GILLETTE BLADES	25c
75c SCHUCK BLADES	69c
50c Mennen's BRUSHLESS	43c

OUR Responsibility TO YOU

To us, each doctor's prescription is a trusted responsibility. Our pharmacists are keenly aware of the importance of carrying out the doctor's orders to the most minute detail . . . of compounding each prescription carefully, accurately. Call upon College Drug and be assured that we will fill your order with the highest degree of scientific accuracy.

It's here!

THE WHOLE ROYAL LINE OF

Prince Matchabelli

ALL THE PRECIOUS PERFUMES AND FINE COSMETICS

Stradivari, Duchess of York — and all the other rare and regal perfumes in the famous crown bottles

Exotic Abano Bath Oil and Abano bath luxuries

The Duchess of York Make Up Sequence

FOR HAIR

1.00 DRENE	79c
LUSTRE CREME	1.00
50c CONTI SHAMPOO	39c
HUDNUT EGG SHAMPOO	1.00
50c VITALIS	43c
60c CREME OIL	53c
1.50 KREMEI	1.39

HOUBIGANT Translucid

The ivory-and-gold lipstick case is back again!

One of the most attractive cases ever designed — in beautifully styled metal and plastic. Perfect setting for the creamy-rich, station Translucid lipstick . . . in the vibrant True Red Ruby shade.

\$1.00

Sleek

FOR IMMACULATE ARMS AND LEGS

Elizabeth Arden

Sleek is the Elizabeth Arden answer to all old-fashioned ways of dispatching unwanted hair. First, it's a sweet-scented cream you'll love to use. Second, it gives you perfectly sleek arms and legs in a few minutes. Simply smooth it on — relax for 10 to 15 minutes — remove with warm water and then rub on Elizabeth Arden Hand Lotion.

Sleek, 1.00 ARDEN HAND LOTION, 1.00 and 1.75

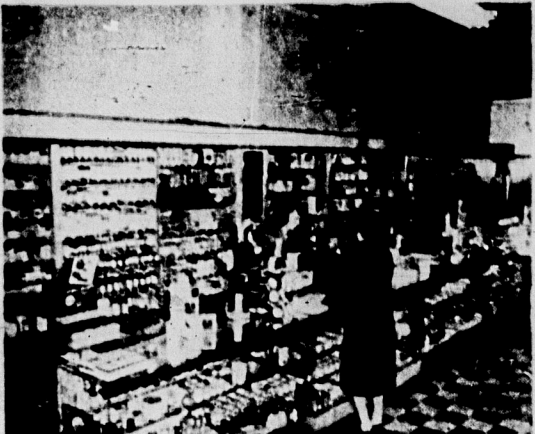
DU BARRY CLEANSING CREAM

gives a woman that *Who is she?* look . . .

Her skin glows with clean, young freshness . . . because DuBarry Cleansing Cream softens as it sweeps out imperceptible dirt and grime. Prove it to yourself!

1.00 plus tax

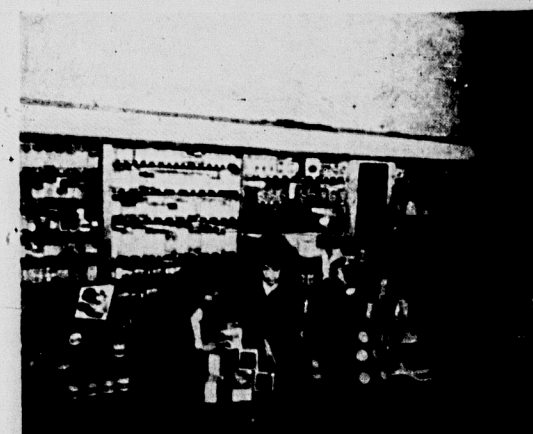
DuBarry Cleansing Cream by Richard Hudnut



COLLEGE DRUG STORE

PRESCRIPTIONS FILLED AS YOUR DOCTOR ORDERED

REGISTERED PHARMACIST ON DUTY AT ALL TIMES



The COLLEGE DRUG STORE Is Owned 100% by War VETERAN