

Coeds Honored at Lantern Night

Presidents Installed; Hannah Talks at Event

By ROSEMARY CORCORAN

The incoming presidents of AWS, Mortar Board and Tower were installed last night at the traditional Lantern Night ceremony at the Bandshell.

Approximately 250 coeds with lighted lanterns watched Dorothy Glupker, Grand Mortar Board, senior women's honorary, from Pat Flynn, outgoing president.

Doris Humes, Lansing freshman, took over the presidency of the guard, sophomore women's honorary, from Barbara Otto, senior sophomore. President of AWS, Arlene Ursin, accepted board, and Sue Marrison, junior board, were installed.

John A. Hannah spoke to women, stressing the symbolism of the traditional ceremony.

"Lantern night, one of the most beautiful of MNC traditions, is in danger of being discontinued due to lack of interest," he said. "There should be more here instead of 200."

The president outlined the tradition behind the ceremony. "The lantern is the symbol of the noblest light in the world which is brought here before me, sweetness of light. The passing of the lantern is symbolic of the unbroken continuity of trust put in women."

As a keeper of the light and a woman should strive to be a woman capable of being," he said.

Following the president's speech, each class passed their lanterns to the class behind them.

Fifty senior women, not previously recognized, were presented white carnations at the end of the ceremony.

The procession, consisting of women from all classes and led by the Mortar Board, was accompanied by the Women's gymnasium tower chimes. The procession followed members of the Mortar Board.

Each class followed members of the Mortar Board. The procession wound from the Gymnasium building and the Ladies to the Bandshell.

Recently elected officers of Alpha Omega are: President, Bill Phipps, Pontiac junior; vice-president, Nancy Shanley, Niles junior; second vice-president, Anita Doyle, Lowell junior; treasurer, Mary Hartsell, Pontiac junior; corresponding secretary, Janeth LaMont, Battle Creek junior; recording secretary, Bill Hall, Grand Rapids junior.

Phi Kappa Sigma's recently elected officers are: President, Rich Grigerell, St. Joseph junior; treasurer, Richard Engle, Chicago senior; secretary, James Glick, Algona sophomore; and recording secretary, Bernard Hagle, Detroit senior.

New Alpha Delta Theta officers are: President, Ann Ruffer, Tawas junior; vice-president, Barbara Otto, Grosse Pointe sophomore; secretary, Patricia Healey, River Junction, Vt., junior; and treasurer, Waltraut Ruhland, senior sophomore.

Alpha Phi's new officers are: President, Joan McMahon, Pleasant Ridge sophomore; vice-president, Jeanne Seefeld, Grand Rapids junior; corresponding secretary, Barbara Courtney, Highland Park junior; and recording secretary, Mary Morse, Lansing junior.

Recently elected Zeta Tau Alpha officers are: President, Susan Lowell, Lowell sophomore; vice-president, Virginia Johnson, Detroit junior; secretary, Carolyn Hanson, Grosse Pointe sophomore; and treasurer, Marylyne Smith, Detroit sophomore.

Let SUMMER go to your head...

SEE BETTY for smart, cool, hairdos.

Betty's Beauty Bar 8-5116 207 M.A.C.

We specialize in hair cutting and permanents.

Social Circuit

New Phi Kappa Tau activities are: Harold Andrews, Pontiac sophomore; James Bielby, Lincoln Park sophomore; Vladimir Fajnor, Chicago sophomore; Steven Dykema, Spring Lake sophomore; John Gillen, Dowagiac freshman; Robert Granzel, Saginaw junior; Charles Murphy, Mexico, N. Y., freshman; Joseph Skidmore, Lansing freshman; and William Wimperfurth, Spring Lake freshman.

Zeta Beta Tau's new members include: Bernie Hartman of Detroit; Stanley Stahlburg, Detroit special student; Joseph Rose, Detroit freshman; Sheldon Wagoner, Detroit freshman; and Sargent Fray of St. Louis Mo.

Recently initiated into Delta Sigma Psi business administration fraternity were: Fred Andrews, Yale junior; Thomas Bednarek, Grand Rapids junior; Ronald Benson, Muskegon sophomore; Ronald Brinks, Jensen sophomore; Evans Corden, Detroit junior; Robert Frew, East Lansing junior; John Garrity, Detroit junior; Roger Parmenter, Muskegon junior.

Other Delta Sigma Psi activities are: Charles Patrick, Bay City junior; Norman Poplawski, Spring Lake sophomore; Milan Sabick, Summit, Ill., junior; and Stewart Van Meter, Detroit sophomore.

New members of Phi Tau Sigma, national mechanical engineering fraternity, are: Gary Abramowski, Manistee sophomore; John Allen, Ionia junior; Richard Charnesky, Westland junior; Jerome Chmielewski, Saginaw junior; Walter Chmielewski, Saginaw senior; Fred Freilich, Potomac, Md., senior; Bruce Milton, Romulus junior.

Other Phi Tau Sigma activities are: Ralph Paul, East Lansing junior; Gene Rundle, Grosse Pointe junior; Leonard Shaver, Lansing junior; Lloyd Shelder, Benton junior; Lawrence Taylor, Marine, City junior; Frederick Warrell, Venter, N.J., graduate student; and Dulaney Smith, Greenville, Tex., senior.

Recently joined were: Jo Anne Wonnherger, Delta Delta Delta junior, from Bloomfield Hills; to Paul Wheaton, Waynesboro, Wis.; Dorothy Miller, Detroit sophomore; to Frederick Bartz, Phi Kappa Tau sophomore from

North Arlington, N.J.; Gloria Cima, Delta Delta Delta freshman from Grosse Pointe; to Jerry Noy of the University of Michigan; and Mary Louise Coates, Delta Delta Delta senior from Royal Oak; to Thomas Ostlen, De Pauw university graduate.

Beulah Ann Province, Delta Delta Delta sophomore from Iron City, was recently married to Russell Humphrey, Big Rapids sophomore.

New Theta Chi activities are: Edward Iverson, Frankfurt sophomore; James Carver, Kalamazoo freshman; Robert Quint, Evanston, Ill., junior; John McKenna, Buffalo, N.Y., junior; and Gaspar Castellani, of East Rochester, N.Y.

Recently initiated into Phi Epsilon Kappa, men's physical education fraternity, were: Herbert Olson, Detroit sophomore; James Perry, Amsterdam, N.Y., freshman; Wayne Armer, Omaha, Neb., senior; John Fleming, Lansing senior; Edward Kiley, Standish senior; Gale Mikles, Pontiac special student; Frank Thomas, Flint junior; and Robert Wallis, Sault Ste. Marie senior.

Phi Alpha Theta, history honorary, and the History club will join forces to sponsor a picnic for night at East Lansing park, Betty Buckholz, Westland senior, announced.

Members of the two organizations and history majors will meet at 4 p.m. Sunday at the history office in Morrill hall on campus. Transportation will be provided from Morrill hall at 4 p.m. Miss Buckholz said.

Both groups will hold election of officers at the picnic. House ball and other activities are also planned for the event.

Stuart Prall, Lansing senior and president of Phi Alpha Theta; Jack Tepaska, Grand Rapids senior and secretary-treasurer of the History club; and Miss Buckholz are in charge of all arrangements.

WOMEN'S PAGE

Nancy Hotop
Night Editor

Hillel Foundation Presents Awards, Officers at Dinner

Hillel foundation held its first annual awards and installation banquet on Tuesday, May 22 at the Hearsh room of Brauer's 1861 House.

Retiring president Irv Baldwin presented certificates of honor to the following: Jo Anne Immerman, Flint freshman; Roselle Gluck, Youngstown, O., junior; Dave Fleck, New York city freshman; Rev. Hatosky, Benton Harbor junior; Belle Lande, Flint freshman; Irwin Odell, Brooklyn, N.Y., junior; Art Kriesman, East Lansing junior; Carol Gutentag, Cleveland Heights, Ohio, freshman; and Howard Sparer, Brooklyn, N.Y., sophomore.

Baldwin also awarded Hillel pins to Naomi Ruskin, Detroit sophomore; Norma Rapp, Benton Harbor senior; and Chuck Aronson, Chicago, graduate student. The Hillel Yeshiva, for outstanding service to Hillel, was given to Sam Butterflies, White Plains, New York senior.

Randa Alfred L. Friedman, director of the foundation, presented the book "What The Jews Believe" to Butterflies and to five others who had given outstanding service to Hillel. They are: Max Jozowitz, Brooklyn, New York junior; Bernie Wasserman, Brooklyn, New York senior; Sharon Robinson, Ithaca sophomore; Irv Baldwin, Rochester, New York senior; and Gloria La Patin.

In the case of married students, the residence is for three weeks. During that time, each wife is manager for five days, planning meals, buying food and generally managing the household. She must plan the budget for a particular income group.

Since the husbands are not enrolled in the course, their work is on a purely voluntary basis. "They have been very nice about volunteering to serve as hosts at the table when their wives are managers," Miss Knoll said.

One of the boys sharpened all the kitchen knives and builds the fire in the fire place," she added.

During the four years that married students have lived in a unit of the home management house, about half of the husbands have been students. Most of the men work part time.

Very few difficulties arise in connection with married residents, Miss Knoll declared. One adjustment, however, is that of scheduling.

"Some of them work and get home at different hours," she said. "We must prepare the meals when most of the people are there."

For leisurely dining in pleasant atmosphere

THE PAGODA Restaurant

Fine Foods • 4 Dining Rooms • ORGAN MUSIC BY CHUCK STUART 1824 E. MICH. AVE. PHONE 2-4515

COME IN AND WATCH TELEVISION ON OUR TV SET

COOL AND COMFORTABLE surroundings make a delicious meal more pleasant. A variety of menu and efficient service add to your eating pleasure. Complete meals served right up till closing time.

GOOD SERVICE

COLLEGE GRILL 315 E. Grand River

Open From 7:00 a.m. — 2:00 a.m. Every Nile

extra special new touches for an old favorite

added pinking new, light tone hand stitched

Fortune

It's an old favorite with its face lifted. You'll note the added pinking, light tone, hand stitching. But your foot won't know the difference. Same comfort! Come in today and step into a Fortune.

KLOCK'S SHOES LUCON THEATER BLOCK

Coeds Plan Song Fest, Dorm Picnic

"Co-ed Jamboree," a Memorial day picnic supper, will conclude social events for Women's Inter Residence halls for the school year.

Supper will be served from tables in the back quad of the women's dorms at 5:30 p.m. A song contest and entertainment will follow.

Entered in the sing are Wells, North and South Williams, South Campbell, East Yackley, and Gilchrist. The winner will receive a trophy. Judging will be on the basis of audience applause.

Every women's dorm is invited to participate. In serving the supper, each table will be a different color, and coeds will get a tag of one color telling them which table to go to. The picnic will serve as an inter-dorm mixer.

The Memorial day event used to be an annual affair. That was when Mayo, Campbell, and Williams were the only coed dorms. In the postwar rush the picnic was discarded and is being resumed for the first time this year, under the sponsorship of the Women's Inter-Residence Hall council.

The procession, consisting of women from all classes and led by the Mortar Board, was accompanied by the Women's gymnasium tower chimes. The procession followed members of the Mortar Board.

Each class followed members of the Mortar Board. The procession wound from the Gymnasium building and the Ladies to the Bandshell.

UPJ Club to Hold Picnic Saturday

The Upper Peninsula club will hold a picnic Saturday afternoon at Grand Lodge. All upper peninsula students, guests and friends are invited. The club is holding its meeting previously scheduled for Thursday, tonight at 8:30 in room 35 of the Union.

UNITED AIR LINES IS NOW ACCEPTING LIMITED NUMBERS OF APPLICATIONS FROM JUNE GRADUATES FOR THE POSITIONS OF MAINLINER STEWARDESS

SUCCESSFUL CANDIDATES WILL BE GIVEN FIVE WEEKS' TRAINING AT OUR EXPENSE, AND MUST POSSESS THE FOLLOWING MINIMUM QUALIFICATIONS:

Attractive appearance and personality. 21-26 years of age. 5 ft. 2 in. - 5 ft. 7 in. in height. Single.

Able to pass rigid physical examination with 20-30 vision in each eye without glasses.

PLEASE CONTACT YOUR PLACEMENT OFFICE FOR DETAILS, OR WRITE TO: UNITED AIRLINES, Inc.

5359 SOUTH CICERO AVENUE, CHICAGO, ILL.

STATE EAST LANSING ENTIRE NEW SHOW TODAY

COMPLETE SHOWS AT 2:55 — 4:57 — 6:59 — 9:03

FEATURE STARTS — 1:30 — 3:32 — 5:34 — 7:36 — 9:00

OUR LANE MAKE THEM OUTLAW

JESSE AND FORD JAMES vs. THE YOUNGER BROTHERS!

THE GREAT MISSOURI RAID

Starring MACDONALD CONEY • WENDELL CONEY

BRUCE BENNETT • ELLER DREW • BILL WILLIAMS

CHICAGO COLLEGE of OPTOMETRY Fully Accredited

An Outstanding College to a Splendid Profession

Entrance requirement thirty semester hours of credits in specified courses. Advanced standing granted for additional I.A. credits in specified courses.

Registration Now Open

Excellent clinical facilities. Recreational and athletic activities. Dormitories on campus. Approved for Veterans.

1857-C Larrabee St. Chicago 14, Illinois

practical hands pick this practical

Stitchless Lady Burton

Made without stitches. Guaranteed for the life of the leather.

CAUSE it's practical and practical for you. It's late at night for bills, depending on your place and place to hand over your bill. In choice of exquisite colors, and beautiful leathers.

USE OUR BUDGET TERM

Morgan's

LUCON BLDG., E. Lansing

COLLEGE INN ANNOUNCES NEW HOURS — SUNDAY thru THURSDAY — 10:45 a.m. to 10 p.m. — FRIDAY and SATURDAY — 10:45 a.m. to 12 p.m.

Coaches' Corner

Guest
ColumnBy WAYNE TINKLE
MSC Mural Director

Intramural sports were initiated on college campuses long before physical education or varsity sports. In the early days of college life, playing any sort of sport or game was considered "taboo." This, did not keep the interested students from taking part in sports. Intra-murals as we know them today, were not seen on the campus till the 1880's. At that time, a group getting together behind a barn or building to play a game, were said to have been participating in intramural athletics. The interest in college athletics grew from that time on, but in a rather haphazard way.

In a few years, the students began to organize. Without help or blessing from the faculty, leagues were set up. They were set-up along the same basis as we have today, that is, societies, fraternities, dormitories and class. The intramural idea spread like wildfire throughout the country.

In the early 1900's, it became apparent to physical educators that intra-mural sports could add importance to physical education. Here, they said, was the opportunity for students to put into practice the many skills and techniques learned and developed in physical education classes.

Today, intra-mural sports are receiving more college support than ever before.

The intramural program at Michigan State College reaches about a third of our men. Although we have great interest, we are striving to increase it.

Our program is set-up to serve the student. In order for this program to improve, and grow, you the student, must feel a part of it and help wherever you can. Anytime you have suggestions or ideas for new activities or a change in those already existing, feel free to come in and talk with us.

Golfers Aim for Big Ten Title

MSC Rated Outside Chance; U of M, Purdue, OSU Favored

MSC tees off into its first Big Ten golf championship match at dawn today over the Northwestern university course at Evanston, Ill. Purdue, the defending champion, will be facing State for the first time in championship play.

Not only are the linksmen from Michigan State rated an outside bet, but the Boiler-makers will be facing strong competition from Michigan and Ohio State.

The State golf team has improved greatly over their early season start. Their recent victory

driver, is carrying an average of 79. Dick Bishop, who VanAlstyne feels may reach his stride in the championships, should be a cinch to better his team average of 78. Carl Mosack, an outstanding sophomore this year, has shot far under his season's average of 79 in his last two matches.

State will run up against such men as Gene Coulter and Dave Laffin, Purdue aces. The former placed fourth last year and the latter was runner-up for medalist honors in the 1936 NCAA meet.

In addition to those from Purdue will be such men as Tom Nieporie from Ohio State, who placed second among the individual scores last year. Other lettermen on the OSU team include Dick Widdoes and Don Johnson.

Michigan, a traditional Spartan rival, has already trimmed the Spartans twice this year and has won six of the last nine championships.

Northwestern, which won the 1948 tournament, may produce a surprise. Lack of all-around strength may handicap the Wildcats, although veterans Wilbur Anderson and Bob White may figure in the fight for individual honors.

BULLETIN

Michigan State yesterday defeated Northwestern university and the University of Minnesota in a tri-match at Evanston, Ill. Team scores were MSC 462, Northwestern 465, and Minnesota 470. State lost a valuable player in today's Big Ten meet as Captain Don Ferne sprained his ankle. He was replaced by Don Stevens.

over Notre Dame has given new hope for a top place in the annual meet.

In trimming N.D. last Monday, 15-12, Captain Don Ferne led the team with a card of 146 in the 36-hole match. This was the first time this season that Ferne has shown any of the consistency that he potentially possesses. The other five regulars have also shown improvement over their early season matches.

Top contenders in today's match will be State's Jack Zinn and Reggie Myles.

Zinn, who is now sporting a 73 average, best on the team, has won points in all of his matches this year. Myles, son of the Walnut Hills professional, is known as a hot weather golfer. The majority of this year's meets being played in chilly weather may account for his season average of 76. Should the day be hot, VanAlstyne feels that it may be the factor Myles needs to shoot par golf.

Biff Hills, a consistent long ball

Baseball

(Continued From Page 1)

Bob Ciolek was hit by a pitched ball, Dick Blanchard beat out an infield hit to score Rivich.

Blanchard and Ciolek combined to pull a double steal, State's second of the game, to score Ciolek.

Chuck Joblonski continued the rally with a single to left and pitcher Dangel aided his own cause with a wind-blown double, driving in Blanchard and Joblonski.

State added two more counters in the eighth off pitcher Joe Dranchak, who had replaced starter Len Kelly.

The Titans scored twice in the eighth on two hits and an error.

HIGHLIGHTS

The victory was number 16 for the Spartans against four losses. U of D now has a record of eight wins, nine defeats and a tie.

MSC now holds 13 consecutive victories over Detroit starting in 1944. Centerfielder Magi extended his consecutive hitting streak to 17 games with two singles.

Ciolek's long flyout to right in the fifth would have easily carried over the fence at Old College field.

Coach John Kobs used 16 players in the game, with only Rivich and Joblonski going the full nine innings.

Five Detroit errors aided the Spartan cause. U of D hurler, Kelly, had a 5-2 record going in to yesterday's contest.

Football Tickets on Sale Monday

Tickets for next fall's football games will go on sale Monday, June 4, the Michigan State athletic department ticket office announced.

Home Games
Sept. 22, Oregon State \$3.60
Oct. 13, Marquette 3.00
Oct. 27, Pitt (homecoming) 3.60
Nov. 10, Notre Dame 3.60
Nov. 24, Colorado 3.00

Games Away
Sept. 29, Michigan \$3.60
Oct. 6, Ohio State 3.50
Oct. 20, Penn State 3.60
Nov. 17, Indiana 3.60

There is a limit of four tickets per person for the Notre Dame, Michigan and Ohio State games. No limit has been placed on ticket sales of other games.

Managers

A meeting for all men interested in winning awards as hockey manager will be held in room 34 of the Union tonight, Thursday, May 24, at 7 p.m.

'Mural Schedule

BOWLING

Thursday, May 24, at 6:30

Alleys
1-2 Sandbaggers vs. Hicks

SOFTBALL

No softball scheduled for today because of conflict with the comp schedule.

Benson Recovers from Operation

Wayne Benson, recently voted as the most valuable player in the Green-White football game is recovering from an emergency appendix operation, at Olin Memorial hospital.

Benson's condition was "very good" according to nurses at the hospital. The operation will not prevent Benson from playing football this fall.

Benson, a Harvey, Ill., junior, scored the only two touchdowns of the afternoon in the Green-White game to win the Calhoun county award, which is annually presented to the game's most valuable player.

The dubious distinction of having committed the most errors by one team in a single season goes to the Detroit Tigers of 1901. They made 425.

Frosh Nine Look Impressive Despite 8-1 Loss to Varsity

A thorough pasting was delivered the freshman team Tuesday night by the varsity to the tune of 8 to 1. The frosh did not look as bad as the score indicated, but a few fielding lapses that proved costly.

Chuck Gorman pitched the first and last two innings, Gus Carlson pitched the third and fourth, and Bob Dangel hurled the fifth and sixth. The game was called at the end of the eighth inning.

Freshman hurler Bill Lovett looked very impressive against the varsity sluggers as he limited them to one run and one hit in four innings. Duane Frankfort and Bud Erickson finished up for the frosh.

Although the frosh didn't fare too well against the varsity, they continued their mastery over the junior varsity with a double win last week-end. Hitting played the major role in Friday's 9-6 win, while pitching ruled in Saturday's 3-1 victory.

Al Taylor, third baseman from Wyandotte, doubled with the bases loaded, and second baseman, Jim Hall, of Ithaca, N. Y., singled with two on, to lead the team to victory.

In Saturday's game, frosh pitchers, Don Nundt of Wilmette, Ill., and Ernie Erickson from Grrosse Pointe Park, al-

lowed the JV's but a hit pitcher Pete Carroll of Detroit was also effective in giving the varsity 8 hits.

The game's only damaging came in the 4th inning when Tom Yewick, of Conemaugh, tripled with two on.

In the six games played by the teams this spring, the frosh won 4, the JV's one, and one ended in a tie.

Frosh coaches, Ed Zurek and "Buzz" Bowers, expressed over the performance of the wards.

Coach Zurek said, "With exception of the sixth inning, play was on a par with the varsity. Until the sixth, the sense of a possible upset, but experience under pressure was much for the young squad to bear."

Coach Bowers agreed and added, "It cannot be said that the frosh squad lacks team spirit, love to play ball and are every minute."

A second varsity-frosh game tentatively scheduled for Monday.

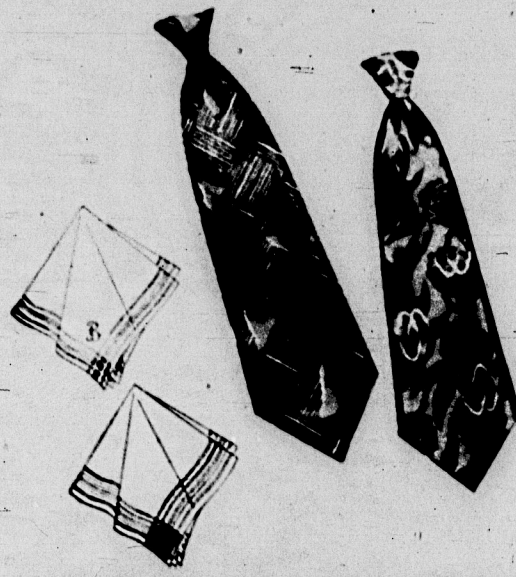
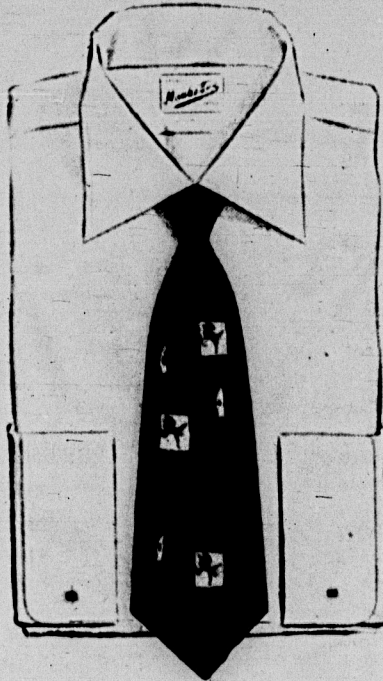
Nothing smarter

For A Graduate

THAN
FURNISHINGS BY

Manhattan

White shirts of broadcloth or Oxford cloth . . . Wide spread or button-down collars . . . 3.95 to 4.95
Neckwear as illustrated . . . 1.50 to 3.50.
Handkerchiefs of fine Swiss or linen with plain or corded hems in plain white or colored borders . . . 55c to 1.50.



Small's

271 SOUTH WASHINGTON
Home of HART SCHAFFNER & MARX CLOTHING

Liebermann's

BUSINESS CASES

... for a bright future



GREAT GIFT for a graduate . . . a handsome brief case of mellow, long-wearing leather. Choose a style to fit his need in our great collection of finely crafted cases.

Liebermann
TRUNK CO.

107 South Washington Ave.
Travelware . . . Gifts . . . Handbags



That Are
Really
COOL!

• Gabardines
• Shantung
• Linens
• Bedford Cords
ALL COLORS
PRICED FROM
\$10.50

"The Tog Shop"

LUCON THEATER BUILDING — EAST LANSING, MICH.

Five State Netters Qualify for Big Ten Championships

ILLINOIS, MICHIGAN FAVORED

Thinclads Vie in Big Ten Finals

By ALEX LAGGIS

Green and White of Michigan will make its inaugural Big Ten outdoor championship track classic tomorrow and Friday in the 51st running of the annual affair. The meet looks like a real one, with Illinois and Michigan, well balanced squad rated favorites to cop the title.

Michigan, which finished a second in the indoor season, is expected to give the Illinois their stiffest competition.

Michigan's strongest competition in the polevault will probably come from his teammate Dick Coleman, who took first here against State last week when Laz was absent.

The Illinois are loaded in the sprints with Joe Gonzales in the 100, Cirilo McSweeney in the 220 and 440 and Stacey Siders in the 440.

Harry Berschet looms as a sure placer in the discus as do Joel McElvilly and Jerry Slack in the hurdles and Siders in the 880.

Michigan, which finished a second in the indoor season, is expected to give the Illinois their stiffest competition.

Michigan's strongest competition in the polevault will probably come from his teammate Dick Coleman, who took first here against State last week when Laz was absent.

Michigan, which finished a second in the indoor season, is expected to give the Illinois their stiffest competition.

Michigan's strongest competition in the polevault will probably come from his teammate Dick Coleman, who took first here against State last week when Laz was absent.

Michigan, which finished a second in the indoor season, is expected to give the Illinois their stiffest competition.

Michigan, which finished a second in the indoor season, is expected to give the Illinois their stiffest competition.

Michigan, which finished a second in the indoor season, is expected to give the Illinois their stiffest competition.

Michigan, which finished a second in the indoor season, is expected to give the Illinois their stiffest competition.

Michigan, which finished a second in the indoor season, is expected to give the Illinois their stiffest competition.

Michigan, which finished a second in the indoor season, is expected to give the Illinois their stiffest competition.

Michigan, which finished a second in the indoor season, is expected to give the Illinois their stiffest competition.

Michigan, which finished a second in the indoor season, is expected to give the Illinois their stiffest competition.

Michigan, which finished a second in the indoor season, is expected to give the Illinois their stiffest competition.

Michigan, which finished a second in the indoor season, is expected to give the Illinois their stiffest competition.

Michigan, which finished a second in the indoor season, is expected to give the Illinois their stiffest competition.

Michigan, which finished a second in the indoor season, is expected to give the Illinois their stiffest competition.

Michigan, which finished a second in the indoor season, is expected to give the Illinois their stiffest competition.

Michigan, which finished a second in the indoor season, is expected to give the Illinois their stiffest competition.

Michigan, which finished a second in the indoor season, is expected to give the Illinois their stiffest competition.

Michigan, which finished a second in the indoor season, is expected to give the Illinois their stiffest competition.

Michigan, which finished a second in the indoor season, is expected to give the Illinois their stiffest competition.

Michigan, which finished a second in the indoor season, is expected to give the Illinois their stiffest competition.

Michigan, which finished a second in the indoor season, is expected to give the Illinois their stiffest competition.

Michigan, which finished a second in the indoor season, is expected to give the Illinois their stiffest competition.

Michigan, which finished a second in the indoor season, is expected to give the Illinois their stiffest competition.

Michigan, which finished a second in the indoor season, is expected to give the Illinois their stiffest competition.

Michigan, which finished a second in the indoor season, is expected to give the Illinois their stiffest competition.

Michigan, which finished a second in the indoor season, is expected to give the Illinois their stiffest competition.

Michigan, which finished a second in the indoor season, is expected to give the Illinois their stiffest competition.

Michigan, which finished a second in the indoor season, is expected to give the Illinois their stiffest competition.

Michigan, which finished a second in the indoor season, is expected to give the Illinois their stiffest competition.

Michigan, which finished a second in the indoor season, is expected to give the Illinois their stiffest competition.

Michigan, which finished a second in the indoor season, is expected to give the Illinois their stiffest competition.

Michigan, which finished a second in the indoor season, is expected to give the Illinois their stiffest competition.

Michigan, which finished a second in the indoor season, is expected to give the Illinois their stiffest competition.

Michigan, which finished a second in the indoor season, is expected to give the Illinois their stiffest competition.

Michigan, which finished a second in the indoor season, is expected to give the Illinois their stiffest competition.

Michigan, which finished a second in the indoor season, is expected to give the Illinois their stiffest competition.

Michigan, which finished a second in the indoor season, is expected to give the Illinois their stiffest competition.

Michigan, which finished a second in the indoor season, is expected to give the Illinois their stiffest competition.

Michigan, which finished a second in the indoor season, is expected to give the Illinois their stiffest competition.

Michigan, which finished a second in the indoor season, is expected to give the Illinois their stiffest competition.

Michigan, which finished a second in the indoor season, is expected to give the Illinois their stiffest competition.

Michigan, which finished a second in the indoor season, is expected to give the Illinois their stiffest competition.

Michigan, which finished a second in the indoor season, is expected to give the Illinois their stiffest competition.

Michigan, which finished a second in the indoor season, is expected to give the Illinois their stiffest competition.

Michigan, which finished a second in the indoor season, is expected to give the Illinois their stiffest competition.

Michigan, which finished a second in the indoor season, is expected to give the Illinois their stiffest competition.

Michigan, which finished a second in the indoor season, is expected to give the Illinois their stiffest competition.

Michigan, which finished a second in the indoor season, is expected to give the Illinois their stiffest competition.

Michigan, which finished a second in the indoor season, is expected to give the Illinois their stiffest competition.

Michigan, which finished a second in the indoor season, is expected to give the Illinois their stiffest competition.

Michigan, which finished a second in the indoor season, is expected to give the Illinois their stiffest competition.

Michigan, which finished a second in the indoor season, is expected to give the Illinois their stiffest competition.

Michigan, which finished a second in the indoor season, is expected to give the Illinois their stiffest competition.

Michigan, which finished a second in the indoor season, is expected to give the Illinois their stiffest competition.

Michigan, which finished a second in the indoor season, is expected to give the Illinois their stiffest competition.

Michigan, which finished a second in the indoor season, is expected to give the Illinois their stiffest competition.

Michigan, which finished a second in the indoor season, is expected to give the Illinois their stiffest competition.

Michigan, which finished a second in the indoor season, is expected to give the Illinois their stiffest competition.

Michigan, which finished a second in the indoor season, is expected to give the Illinois their stiffest competition.

Michigan, which finished a second in the indoor season, is expected to give the Illinois their stiffest competition.

Michigan, which finished a second in the indoor season, is expected to give the Illinois their stiffest competition.

Michigan, which finished a second in the indoor season, is expected to give the Illinois their stiffest competition.

George Jacobson in the 880 and hurdler Don Hoover are expected to have a lot to say in where the Wolverines finish. They also boast two top broadjumpers in Ross Solbe and Horace Coleman.

The anticipated duel between McEwen and Len Truex of Ohio State may well produce a new mile mark. Both have bettered the existing record in the past and an all out effort could write a new mark in the record book.

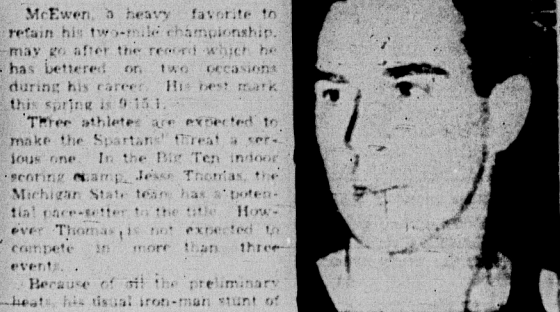
McEwen, a heavy favorite to retain his two-mile championship, may go after the record which he has bettered on two occasions during his career. His best mark this spring is 9:15.1.

Three athletes are expected to make the Spartans' Great a serious one. In the Big Ten indoor scoring champ, Jesse Thomas, the Michigan State team has a potential pace-setter in the title. However, Thomas is not expected to compete in more than three events.

Because of all the preliminary heats, his usual iron-man stunt of competing in four events is almost impossible.

The Spartans have a good distance crew in Capt. Warren Drutzler in the mile and two-mile and Don Makielski in the 880. Don Carey seems a sure bet to place in the shotput.

Other MSC runners expected to add to State's scoring total are Dick Henson in the hurdles, Art Ingram in the 100, and Jim Keppford in the distance.



JIM KEPPFORD

in the shot put and Laz in the pole vault.

MSC Coach Karl Schladerman stated he will take a 12-man squad to compete in the Spartans' first outdoor conference meet.

Besides Makielski, Drutzler, Carey, Thomas, Henson, Ingram and Keppford, they are Mickey Walter, Ray McKay, Joe Correll, Zach Skokor and Steve Little.

Michigan's attack will be spearheaded by the brilliant Don McEwen, the conference's top entry in the mile and two-mile. Bill Konrad in the dashes, Joe LaBlue in the 440, Chuck Whiteaker and

Michigan's attack will be spearheaded by the brilliant Don McEwen, the conference's top entry in the mile and two-mile. Bill Konrad in the dashes, Joe LaBlue in the 440, Chuck Whiteaker and

Michigan's attack will be spearheaded by the brilliant Don McEwen, the conference's top entry in the mile and two-mile. Bill Konrad in the dashes, Joe LaBlue in the 440, Chuck Whiteaker and

Michigan's attack will be spearheaded by the brilliant Don McEwen, the conference's top entry in the mile and two-mile. Bill Konrad in the dashes, Joe LaBlue in the 440, Chuck Whiteaker and

Michigan's attack will be spearheaded by the brilliant Don McEwen, the conference's top entry in the mile and two-mile. Bill Konrad in the dashes, Joe LaBlue in the 440, Chuck Whiteaker and

Michigan's attack will be spearheaded by the brilliant Don McEwen, the conference's top entry in the mile and two-mile. Bill Konrad in the dashes, Joe LaBlue in the 440, Chuck Whiteaker and

Michigan's attack will be spearheaded by the brilliant Don McEwen, the conference's top entry in the mile and two-mile. Bill Konrad in the dashes, Joe LaBlue in the 440, Chuck Whiteaker and

Michigan's attack will be spearheaded by the brilliant Don McEwen, the conference's top entry in the mile and two-mile. Bill Konrad in the dashes, Joe LaBlue in the 440, Chuck Whiteaker and

Michigan's attack will be spearheaded by the brilliant Don McEwen, the conference's top entry in the mile and two-mile. Bill Konrad in the dashes, Joe LaBlue in the 440, Chuck Whiteaker and

Michigan's attack will be spearheaded by the brilliant Don McEwen, the conference's top entry in the mile and two-mile. Bill Konrad in the dashes, Joe LaBlue in the 440, Chuck Whiteaker and

Michigan's attack will be spearheaded by the brilliant Don McEwen, the conference's top entry in the mile and two-mile. Bill Konrad in the dashes, Joe LaBlue in the 440, Chuck Whiteaker and

Michigan's attack will be spearheaded by the brilliant Don McEwen, the conference's top entry in the mile and two-mile. Bill Konrad in the dashes, Joe LaBlue in the 440, Chuck Whiteaker and

Michigan's attack will be spearheaded by the brilliant Don McEwen, the conference's top entry in the mile and two-mile. Bill Konrad in the dashes, Joe LaBlue in the 440, Chuck Whiteaker and

Michigan's attack will be spearheaded by the brilliant Don McEwen, the conference's top entry in the mile and two-mile. Bill Konrad in the dashes, Joe LaBlue in the 440, Chuck Whiteaker and

Michigan's attack will be spearheaded by the brilliant Don McEwen, the conference's top entry in the mile and two-mile. Bill Konrad in the dashes, Joe LaBlue in the 440, Chuck Whiteaker and

Michigan's attack will be spearheaded by the brilliant Don McEwen, the conference's top entry in the mile and two-mile. Bill Konrad in the dashes, Joe LaBlue in the 440, Chuck Whiteaker and

Michigan's attack will be spearheaded by the brilliant Don McEwen, the conference's top entry in the mile and two-mile. Bill Konrad in the dashes, Joe LaBlue in the 440, Chuck Whiteaker and

Michigan's attack will be spearheaded by the brilliant Don McEwen, the conference's top entry in the mile and two-mile. Bill Konrad in the dashes, Joe LaBlue in the 440, Chuck Whiteaker and

Michigan's attack will be spearheaded by the brilliant Don McEwen, the conference's top entry in the mile and two-mile. Bill Konrad in the dashes, Joe LaBlue in the 440, Chuck Whiteaker and

Michigan's attack will be spearheaded by the brilliant Don McEwen, the conference's top entry in the mile and two-mile. Bill Konrad in the dashes, Joe LaBlue in the 440, Chuck Whiteaker and

Michigan's attack will be spearheaded by the brilliant Don McEwen, the conference's top entry in the mile and two-mile. Bill Konrad in the dashes, Joe LaBlue in the 440, Chuck Whiteaker and

Michigan's attack will be spearheaded by the brilliant Don McEwen, the conference's top entry in the mile and two-mile. Bill Konrad in the dashes, Joe LaBlue in the 440, Chuck Whiteaker and

Michigan's attack will be spearheaded by the brilliant Don McEwen, the conference's top entry in the mile and two-mile. Bill Konrad in the dashes, Joe LaBlue in the 440, Chuck Whiteaker and

Michigan's attack will be spearheaded by the brilliant Don McEwen, the conference's top entry in the mile and two-mile. Bill Konrad in the dashes, Joe LaBlue in the 440, Chuck Whiteaker and

Michigan's attack will be spearheaded by the brilliant Don McEwen, the conference's top entry in the mile and two-mile. Bill Konrad in the dashes, Joe LaBlue in the 440, Chuck Whiteaker and

Michigan's attack will be spearheaded by the brilliant Don McEwen, the conference's top entry in the mile and two-mile. Bill Konrad in the dashes, Joe LaBlue in the 440, Chuck Whiteaker and

Michigan's attack will be spearheaded by the brilliant Don McEwen, the conference's top entry in the mile and two-mile. Bill Konrad in the dashes, Joe LaBlue in the 440, Chuck Whiteaker and

Michigan's attack will be spearheaded by the brilliant Don McEwen, the conference's top entry in the mile and two-mile. Bill Konrad in the dashes, Joe LaBlue in the 440, Chuck Whiteaker and

Michigan's attack will be spearheaded by the brilliant Don McEwen, the conference's top entry in the mile and two-mile. Bill Konrad in the dashes, Joe LaBlue in the 440, Chuck Whiteaker and

Michigan's attack will be spearheaded by the brilliant Don McEwen, the conference's top entry in the mile and two-mile. Bill Konrad in the dashes, Joe LaBlue in the 440, Chuck Whiteaker and

Michigan's attack will be spearheaded by the brilliant Don McEwen, the conference's top entry in the mile and two-mile. Bill Konrad in the dashes, Joe LaBlue in the 440, Chuck Whiteaker and

Michigan's attack will be spearheaded by the brilliant Don McEwen, the conference's top entry in the mile and two-mile. Bill Konrad in the dashes, Joe LaBlue in the 440, Chuck Whiteaker and

Michigan's attack will be spearheaded by the brilliant Don McEwen, the conference's top entry in the mile and two-mile. Bill Konrad in the dashes, Joe LaBlue in the 440, Chuck Whiteaker and

Michigan's attack will be spearheaded by the brilliant Don McEwen, the conference's top entry in the mile and two-mile. Bill Konrad in the dashes, Joe LaBlue in the 440, Chuck Whiteaker and

Michigan's attack will be spearheaded by the brilliant Don McEwen, the conference's top entry in the mile and two-mile. Bill Konrad in the dashes, Joe LaBlue in the 440, Chuck Whiteaker and

Michigan's attack will be spearheaded by the brilliant Don McEwen, the conference's top entry in the mile and two-mile. Bill Konrad in the dashes, Joe LaBlue in the 440, Chuck Whiteaker and

Michigan's attack will be spearheaded by the brilliant Don McEwen, the conference's top entry in the mile and two-mile. Bill Konrad in the dashes, Joe LaBlue in the 440, Chuck Whiteaker and

Michigan's attack will be spearheaded by the brilliant Don McEwen, the conference's top entry in the mile and two-mile. Bill Konrad in the dashes, Joe LaBlue in the 440, Chuck Whiteaker and

Michigan's attack will be spearheaded by the brilliant Don McEwen, the conference's top entry in the mile and two-mile. Bill Konrad in the dashes, Joe LaBlue in the 440, Chuck Whiteaker and

Michigan's attack will be spearheaded by the brilliant Don McEwen, the conference's top entry in the mile and two-mile. Bill Konrad in the dashes, Joe LaBlue in the 440, Chuck Whiteaker and

Michigan's attack will be spearheaded by the brilliant Don McEwen, the conference's top entry in the mile and two-mile. Bill Konrad in the dashes, Joe LaBlue in the 440, Chuck Whiteaker and

Michigan's attack will be spearheaded by the brilliant Don McEwen, the conference's top entry in the mile and two-mile. Bill Konrad in the dashes, Joe LaBlue in the 440, Chuck Whiteaker and

Michigan's attack will be spearheaded by the brilliant Don McEwen, the conference's top entry in the mile and two-mile. Bill Konrad in the dashes, Joe LaBlue in the 440, Chuck Whiteaker and

Michigan's attack will be spearheaded by the brilliant Don McEwen, the conference's top entry in the mile and two-mile. Bill Konrad in the dashes, Joe LaBlue in the 440, Chuck Whiteaker and

Michigan's attack will be spearheaded by the brilliant Don McEwen, the conference's top entry in the mile and two-mile. Bill Konrad in the dashes, Joe LaBlue in the 440, Chuck Whiteaker and

Michigan's attack will be spearheaded by the brilliant Don McEwen, the conference's top entry in the mile and two-mile. Bill Konrad in the dashes, Joe LaBlue in the 440, Chuck Whiteaker and

Michigan's attack will be spearheaded by the brilliant Don McEwen, the conference's top entry in the mile and two-mile. Bill Konrad in the dashes, Joe LaBlue in the 440, Chuck Whiteaker and

Michigan's attack will be spearheaded by the brilliant Don McEwen, the conference's top entry in the mile and two-mile. Bill Konrad in the dashes, Joe LaBlue in the 440, Chuck Whiteaker and

Michigan's attack will be spearheaded by the brilliant Don McEwen, the conference's top entry in the mile and two-mile. Bill Konrad in the dashes, Joe LaBlue in the 440, Chuck Whiteaker and

Michigan's attack will be spearheaded by the brilliant Don McEwen, the conference's top entry in the mile and two-mile. Bill Konrad in the dashes, Joe LaBlue in the 440, Chuck Whiteaker and

Michigan's attack will be spearheaded by the brilliant Don McEwen, the conference's top entry in the mile and two-mile. Bill Konrad in the dashes, Joe LaBlue in the 440, Chuck Whiteaker and

Michigan's attack will be spearheaded by the brilliant Don McEwen, the conference's top entry in the mile and two-mile. Bill Konrad in the dashes, Joe LaBlue in the 440, Chuck Whiteaker and

Michigan's attack will be spearheaded by the brilliant Don McEwen, the conference's top entry in the mile and two-mile. Bill Konrad in the dashes, Joe LaBlue in the 440, Chuck Whiteaker and

Michigan's attack will be spearheaded by the brilliant Don McEwen, the conference's top entry in the mile and two-mile. Bill Konrad in the dashes, Joe LaBlue in the 440, Chuck Whiteaker and

Michigan's attack will be spearheaded by the brilliant Don McEwen, the conference's top entry in the mile and two-mile. Bill Konrad in the dashes, Joe LaBlue in the 440, Chuck Whiteaker and

Michigan's attack will be spearheaded by the brilliant Don McEwen, the conference's top entry in the mile and two-mile. Bill Konrad in the dashes, Joe LaBlue in the 440, Chuck Whiteaker and

Michigan's attack will be spearheaded by the brilliant Don McEwen, the conference's top entry in the mile and two-mile. Bill Konrad in the dashes, Joe LaBlue in the 440, Chuck Whiteaker and

Michigan's attack will be spearheaded by the brilliant Don McEwen, the conference's top entry in the mile and two-mile. Bill Konrad in the dashes, Joe LaBlue in the 440, Chuck Whiteaker and

Michigan's attack will be spearheaded by the brilliant Don McEwen, the conference's top entry in the mile and two-mile. Bill Konrad in the dashes, Joe LaBlue in the 440, Chuck Whiteaker and

Michigan's attack will be spearheaded by the brilliant Don McEwen, the conference's top entry in the mile and two-mile. Bill Konrad in the dashes, Joe LaBlue in the 440, Chuck Whiteaker and

Michigan's attack will be spearheaded by the brilliant Don McEwen, the conference's top entry in the mile and two-mile. Bill Konrad in the dashes, Joe LaBlue in the 440, Chuck Whiteaker and

Major League Standings

(Night games not included)					(Night games not included)				
AMERICAN LEAGUE					NATIONAL LEAGUE				
	W	L	PCT.	GB		W	L	PCT.	GB
New York	22	9	.710		Brooklyn	15	13	.534	
Chicago	18	9	.667	2	Chicago	17	15	.531	2
DETROIT	16	12	.571	4 1/2	St. Louis	17	15	.531	2
Boston	17	13	.567	4 1/2	Boston	18	17	.514	2 1/2
Washington	15	14	.517	6	New York	17	19	.472	4
Cleveland	14	15	.483	7	Philadelphia	16	18	.471	4
Philadelphia	9	22	.290	15	Cincinnati	15	18	.455	4 1/2
St. Louis	8	25	.242	15	Pittsburgh	14	18	.438	5

YESTERDAY'S RESULTS					YESTERDAY'S RESULTS				
Boston 12, St. Louis 0					New York 2, Chicago 1				
Detroit at New York—rain					St. Louis 6, Boston 5				
Cleveland at Washington—rain					Brooklyn 11, Pittsburgh 4				
Chicago at Philadelphia—rain					Cincinnati 4, Philadelphia 3				
DETROIT at New York—rain (2-2)					PROBABLE PITCHERS				
vs. Ostrowski (1-1)					Cincinnati at St. Louis (night)				
St. Louis at Boston—Widmar (2-2) vs. Taylor (2-3)					Blackwell (5-3) or Raffensberger (1-4) vs. Presko (2-2)				
Cleveland at Washington—Lemon (3-4) vs. Marrero (5-0)					(Only game scheduled.)				
Chicago at Philadelphia—Gumpert (1-0) vs. Kellner (3-1)									

Big Ten Votes Today on Rose Bowl Renewal

EVANSTON, Ill. (AP)—A potential \$200,000 sale of 1952 Rose Bowl television rights may give new hope for continuing the Big Ten-Pacific Coast conference football marriage.

At least with such a melon to slice, officials of both conferences will think twice before settling for divorce.

The Big Ten votes today on whether to renew the Rose Bowl pact for another three years after a rather shaky five-year trial of keeping the big New Year's day classic a family affair.

Big Ten athletic directors and faculty representatives gathered for the showdown ballot are split in their views. But hovering over the meetings is the prospect of a cash-for-cash video hook-up by next Rose Bowl time which could swell the revenue as much as \$200,000 or more with a sponsored broadcast of the granddaddy of bowl games.

The Rose Bowl payoff has been puffy, indeed, in the past compared to the cash swag carried home by teams competing in other major New Year's day attractions.

The Big Ten Rose Bowl representatives' session received more than \$24,000 as its share while each other Big Ten member plus the commissioner's office received \$12,000 apiece.

The total Big Ten take in the past therefore was something like \$144,000 per game.

The Big Ten paid the expenses of the players and coaching staffs of its visiting team. But the visitors had to pay for all the extra trimmings, such as the band, expenses of additional school luminaries, and so forth. The team that made the trip was lucky to net \$5,000 or \$6,000.

While the money plant of the Rose Bowl picture has been minimized, the prospect of sharply increasing the stakes by sale of television rights is a strong factor in both leagues.

The video possibility hinges on providing outstanding teams in the Rose Bowl to face the Pacific Coast opposition. This the Big Ten can provide. It also can provide one of the biggest TV audiences in the nation—the well-knit midwest hubbed by Chicago.

Win Five of Six Singles, Tie Michigan for Lead

By NICK VISTA

Qualifying five of six singles players and one doubles team, Michigan State went into a tie with Michigan at the end of the first day's play of the Big Ten tennis championships.

Both the Spartans and the Wolverines have six points, while Iowa is third with five and one-half, Indiana is fourth with five points.

Tiger, Yankee Game Washed Out in Fourth

Right Horn?



Joann Arnold, 20, of Fulton, Calif., was recently chosen as "Good Posture Girl of 1951" by the International Chiropractors association of Davenport, Ia. Joan measured up to all requirements of good posture as established by the group.

Tabletoppers Give Names to King

The Tabletoppers association is turning in names of MSC students who are using false identification. Tom King, dean of students said yesterday, King said no action has been decided for offenders yet, but "something will be done about it."

Tavern-keepers are checking doubtful IDs with the Tabletoppers lists, and turning in names on which birth dates do not coincide, King said.

Four offenders have been called, he stated, and more will be notified in the future.

King pointed out that using false ID was a state offense, and offenders could be prosecuted by state authorities.

High School Slates Outdoor Ceremony

East Lansing high school seniors will follow the example of MSC and hold their commencement on the high school football field.

The seniors favored the outdoor exercises by a class vote. Commencement will be held Thursday, June 14, at 8:30 p.m. Dr. David M. Trout, dean of education at Central Michigan college of education, is the scheduled speaker.

— NEED —

Programs Medals
Favors Trophies
Stationery Jewelry
Write — Wire — Phone
TOM SUCKLING
'Your Balfour Man'
1319 S. University, Ann Arbor
Phone 3-1733

Lucon

TODAY • FRI. & SAT.
Shown at 6:16 - 8:07 - 9:58



Plus Cartoon Novelty News
TODAY ONLY
FREE! FREE!
TO FIRST 500
ADMISSIONS
A BAR OF LUX SOAP
... A Free Vote For Your
Favorite Contestant!

'Wha Happen?'

Agent Scores Hole-in-One; Misses Policy

STERLING, Ill. — (AP) — Cliff John, 55, a Sterling insurance agent, carried an insurance policy with him for good luck when he played golf.

If John scored a hole-in-one the Lloyd's of London policy would pay \$400.

John was golfing yesterday at the Rock River country club near Sterling. As three companions watched he made a 128-yard hole-in-one on the seventh hole.

John grabbed for the policy. It had lapsed eight days ago.

MSC Foreign Students Form Soccer Team

Michigan State has a new sport — one that'll never be eligible for those much prized Big Ten titles — but a very old game nevertheless. Soccer has invaded East Lansing.

The first soccer team in Michigan State's history was recently formed by 16 male foreign students and two Americans. John R. Mewart, assistant professor of physical education, is serving as coach.

First match was with a Michigan team, who emerged victorious by a 1-0 score, on Sunday. Being beaten by Michigan is a traditional fate of all fledgling MSC teams, but they have tentatively scheduled another match for Saturday morning. A game with Michigan Normal is planned for 9 a.m. Sunday, on the Dem hall field.

Soccer is as popular in England (where it is called Rugby), South America, on the continent, and in the near east as football is in America. Many of the Eastern universities field teams, but the sport is little known in the Midwest.

All of the foreign students were soccer players in their homelands. One man, Celin Gokceatam, graduate student from Turkey has played for ten years, and many of the others are longtime fans too.

Language barriers are not important according to Ricardo Galindo, Bolivian sophomore. "Some of the players do forget and slip into their native tongues though, when the game gets heated," he added.

Accepts Carnival Post



Gene McDerrott, New York Junior, hands over Career carnival material to new chairman Bob Newell, Yale Junior. McDerrott was the chairman of the carnival held spring term. The carnival has been changed to fall term, to satisfy requests of business men who wished to be able to participate. Mary Hartsell, Detroit Junior, looks on. Miss Hartsell is the newly appointed secretary of the carnival.

Carnival Director, Secretary Chosen

Bob Newell, Yale junior, and Mary Hartsell, Detroit junior, will head next year's Career carnival.

Newell, new student director, will replace Orland Schuener. He has worked on the event for two years and was staging director of this year's organization.

Miss Hartsell will follow Mickey McFall as executive secretary. She was assistant secretary this year.

Next year's carnival will be enlarged to a three-day program to be held Nov. 7, 8, and 9. It will double the 1951 event in size as well as length, Newell declared.

Plans, still in the formative stages, will be made by the new director and other chairmen to be named this week. Other directors include publicity, staging, and program chairmen.

A meeting for students interested in working on the carnival will be held tonight at 7:30 in the mural room on the second floor of the Union. Committees will be chosen following the meeting.

Newell said.

Plans have been made to enlarge the carnival to include over 100 firms representing retailing, industry, government bureaus, agriculture finance, and medical firms.

Students from all colleges in Michigan will be invited to attend the carnival with the exception of the University of Michigan. The program will be geared to underclassmen as well as seniors.

The change of the program to a fall event came at the request of firms interested in participating in it.

Holding it in November will make the attendance of a larger number of organizations possible. It will also give students time to follow up job opportunities found during the carnival, Newell explained.

Congress

(Continued From Page 1)

In 1946, the Green and White party opposed several small formations, but all parties were dissolved by common assent after the election.

The program of the group that elected Sheets and Miller stand for strong central student government, according to majority leader Robert Bolo.

Additional action taken last night at the meeting held at Mrs. Isabelle Gonon's home, was the creation of the committee on committees, which will assign all congressmen to two committees. The committee on committees consists of the speaker, speaker pro tempore Bill Crooke, Dale Rhodes, and Kay Davis.

With the election of the president and speaker, eight congressional seats remain to be filled. Six seats had no candidate for election. The other two are declared vacant upon election.

Good Position

When fullback Wayne Benson won the "outstanding player" award in the 1951 spring football game, he may have made a date with destiny. The 1949 winner, halfback Lynn Chandross, and the 1950 winner, halfback Sonny Grandelius, both went on to All-American recognition.

Candidates Apply for School Board

Two candidates will seek to fill one vacancy on the East Lansing board of education at the school board election June 11.

The candidates are Bryant W. Pocock, of 810 Sunset lane, and Donald C. Burnham, of 661 Beech street, who filed petitions Monday. Last day for filing petitions was Tuesday.

The one board seat will be vacated by George M. Foster, retiring president of the board. He has said he will not seek re-election.

Voters in the election have until 8 p.m. June 2 to register.

LANSING DRIVE-IN

GATES OPEN 1:30 P.M.
Show Starts 8:30 P.M.
NOW PLAYING
2 - BIG HITS -
FIRST LOCAL SHOWING!
Mystery Submarine
Plus This First Run Hit
UNDERCOVER GUN
Extra: News and Color Cartoons

Shoes Repaired
WHILE U WAIT

MILLER'S SHOE REPAIR
501 E. GRAND RIVER
Across from Berkey Hall
* fine work * low prices *

SADDLES WOMEN'S
\$4.30 - \$5.95

Black
Red

• Misses, 12 1/2 - 3 \$3.29
• Childs, 8 1/2 - 12 \$3.29
• Infants, 5 - 8 \$2.98

Miller's Shoe Repair
501 EAST GRAND RIVER
Across from Berkey Hall

PATRONIZE STATE NEWS ADVERTISING

Seyffert Says:
The Friendly Store on the Hill

EAST LANSING PHARMACY
517 W. Gr. River, E. Lansing

DeLamp
Good Shoes Well Fit

OPEN EVERY THURSDAY EVENING UNTIL NINE

White Stag

DENIM SEPARATES

Sanitized water-and-sunfast denim . . . frolic-minded mixers to team together at whim

White Stag does such wonderful things with DENIM . . . shapes up the smartest collection of play clothes you've ever sunned in, gardened in or leasured in. French blue, toast or grey; sizes 10 to 18.

- A. Plaid denim shirt, with a rope middy tie at the collar; tailored for comfort. **4.95**
- B. Lazy Susan wraparound skirt, with an adjustable waist, huge pockets. **6.95**
- C. Band bra, with adjustable button halter and back straps; moulded bustline. **2.50**
- D. Tab shorts, with button tabs at the hems. Side zippered, back pocketed. **3.75**
- E. Puddle jumpers, with button tabs at the hems, a comfortable mix-matcher. **4.95**

Jacobson's
East Lansing



Who Will Be Michigan State's Loveliest Lux Girl? See Jacobson's Windows for Details . . . Contest Closes May 26th