

## Centful Program Completes Final Day Of Farmers' Week

### Dairy and Breeding Forums To Highlight Main Events

Advice on dairy improvement and sire selection will be given to farmers attending the dairy program at Fairchild this morning.

C. Baltzer, MSC college extension dairyman, will give the first address. Chairman of the session will be Frank Heim, Jackson president of the Michigan Artificial Breeders Co-operative.

### President Kefauver Declares State Contests 'Eyewash'

WASHINGTON (AP)—President Truman yesterday declared a race against Sen. Kefauver (D-Tenn.) in New Hampshire primary on Feb. 11. But he still left the door open for himself to seek re-election.

For those interested in showmanship, the Block and Bridle Club has slated its 1952 "Little International" at the Livestock Pavilion at 9 this morning.

Over 100 students from four animal husbandry classes will show beef cattle, sheep and swine.

A well-known livestock expert will choose the grand champion showman in each classification.

Other events slated today are meetings of the Michigan Pony Club, the Michigan Muck Farmers Association and the Grassland Farmers.

The Pony Club will hold its annual meeting at 2 p.m. in the Saddle Horse Barn, and wind up with a banquet in the evening.

The Michigan Muck Farmers will consult with the Ohio Growers Association and the Michigan Dairy Promotion Association during their morning sessions.

F. L. Anthony, Dean of Agriculture, will speak at the annual noon banquet on "The Importance of Food." The Michigan Union King for 1951 will also be crowned at the noon.

The Michigan Grange will hold morning and afternoon sessions. In the morning Wilbur Riley, master of the Rollin Grange in Lenawee County, will tell the assembly "How We Planned Our Community Service Contest."

The afternoon session will discuss current legislation on Grange's interest, the Michigan Health program and the Grange Youth Program.

Recent trends in the writing of American history will be discussed Friday afternoon at 2:30 p.m. over WKAR.

The program is sponsored jointly by the History and Political Science Departments.

Dr. John A. Garraty of the History Department will be chairman of the forum which will include Dr. Russell B. Noy Head of the English Department and Charles Hirschfeld of the History of Civilization Department.

The program will be held in the Commons Hall, Bekeley House, Economics and Elect. Engineering Buildings.

Members include "Little Theatre" by Mary and "Loyalties" by Bev.

Members include "Little Theatre" by Mary and "Loyalties" by Bev.

Members include "Little Theatre" by Mary and "Loyalties" by Bev.

Members include "Little Theatre" by Mary and "Loyalties" by Bev.

Members include "Little Theatre" by Mary and "Loyalties" by Bev.

Members include "Little Theatre" by Mary and "Loyalties" by Bev.

Members include "Little Theatre" by Mary and "Loyalties" by Bev.

Members include "Little Theatre" by Mary and "Loyalties" by Bev.

Members include "Little Theatre" by Mary and "Loyalties" by Bev.

Members include "Little Theatre" by Mary and "Loyalties" by Bev.

Members include "Little Theatre" by Mary and "Loyalties" by Bev.

Members include "Little Theatre" by Mary and "Loyalties" by Bev.

Members include "Little Theatre" by Mary and "Loyalties" by Bev.

Members include "Little Theatre" by Mary and "Loyalties" by Bev.

Members include "Little Theatre" by Mary and "Loyalties" by Bev.

Members include "Little Theatre" by Mary and "Loyalties" by Bev.

Members include "Little Theatre" by Mary and "Loyalties" by Bev.

# Michigan State News

M S C DAILY STUDENT PUBLICATION

VOL. 43, NO. 81

EAST LANSING, MICHIGAN — FRIDAY, FEBRUARY 1, 1952

WEATHER:  
PARTLY CLOUDY,  
SPRING PREVIEW

FIVE CENTS



Despite flood waters covering streets in Marietta, Ohio, the postmen get the mail through by using rowboats. This boat, loaded with outgoing mail, is being rowed to trucks waiting on dry land. The over-flowing Ohio river had caused some 8,000 to 10,000 to flee their homes along the flood route.

### Outlines Purposes

## Campus Chest Sets Date For United Charity Drive

By SALLY PHELPS

Campus Chest Week, featuring several all-college events and an all-campus solicitation drive will be held from April 28 to May 2.

By consolidating all drives, students are asked to contribute money to charities once only during the school year.

Last year the Chest turned over \$5,000 to various organizations, according to Carl Eicher, Campus Chest director.

Percentage of the total money collected this year will be distributed as follows:

American Heart Association, 15%. This group aims at three goals for heart victims: research, education, and community service.

Ingush County (part of the American Cancer Society). The Campus Chest feels that as members of the college community, MSC students should contribute directly to cancer research and relief in Ingush County, and so are not supporting the Damon Runyon Cancer fund as in previous years.

National Scholarship Service and Fund for Negro Students, 10%. This organization is aimed at helping qualified Negro students gain a suitable college or university, get scholarships and generally to make it easier for these students to attend college.

World student service fund, 10%. WSSF is a "world university program for mutual assistance, providing books, housing, health service, and actual conferences, and seminars for needy college students all over the world. WSSF is supported in many colleges throughout the country, and was the first-runner of Campus Chest at MSC.

Spartan Nurses' 15%. Spartan Nurses is a cooperative effort started at MSC in 1948, one of the first voluntary organizations in the country. Children of MSC students are asked for the parents help in raising the money and support of children. The money is used as a laboratory for students in education and psychology.

Continuing Education Office and the Office of High School Cooperation.

A few Saturday J-Hop tickets remain on sale, the Union Trust Office said yesterday.

Three thousand tickets were printed, and 300 were left Wednesday, according to Duane Vernon, chairman.

A few Saturday J-Hop tickets remain on sale, the Union Trust Office said yesterday.

Three thousand tickets were printed, and 300 were left Wednesday, according to Duane Vernon, chairman.

A few Saturday J-Hop tickets remain on sale, the Union Trust Office said yesterday.

Three thousand tickets were printed, and 300 were left Wednesday, according to Duane Vernon, chairman.

A few Saturday J-Hop tickets remain on sale, the Union Trust Office said yesterday.

Three thousand tickets were printed, and 300 were left Wednesday, according to Duane Vernon, chairman.

A few Saturday J-Hop tickets remain on sale, the Union Trust Office said yesterday.

### Shadow Day Students Wary As Groundhog Prepares Debut

Who knows? The Shadow knows. That's why the Groundhog is afraid of his, maybe. Tomorrow is S-Day for the little varmint. Shadow day, that is. If he sees it, we've had it. Should the Groundhog—or Aardvark, or Woodchuck, as Webster also calls him—venture forth and see his shadow, there will be six more weeks of winter. Perish the thought.

If he doesn't, our Michigan weather for the next few weeks will just be its usual disgusting self.

### Primary Bill Set for Vote In Senate

Backers Defeat  
Tabling Attempt

LANSING (AP)—A Republican drive to move on Michigan's early September primary election to June 10 is scheduled for a vote today in the Senate.

Backers of the plan beat down a Republican-Democratic move to send the measure back to committee and substitute for it a bill which would merely allow relatives of servicemen to obtain absentee voters ballots for them, thus eliminating one time-consuming step in the process of getting soldiers to vote.

Senator Don Vander Werf (R-Fremont), sponsor of the early primary, at first denied the soldier vote had any connection with his plan and then later declared "I want to see the Republicans in this state have the integrity to vote this because it is the only way to give the servicemen a vote."

Governor Williams, who vetoed the measure a year ago, has called this bill "unnecessary," but has refused to say whether he would reject it. The Republicans assume he will.

If the bill becomes law, candidates for the primary would have to file nominating petitions April 1.

Senator Creighton R. Coleman (R-Battle Creek) charged that Williams is playing politics with this issue because he wants to run for federal and state office at the same time and he can't do that with an early primary.

Presumably, Coleman referred to reports Williams is anxious for the vice presidential nomination.

Senator Charles S. Bonidy of Detroit, the Democratic floor leader and the Republican plan for a five-month election campaign, instead of a two-month one, would limit candidates to those with plenty of money.

The independent newspaper Al Ahram quoted the new premier as saying "we are ready to see what will be possible" in any new proposal from Britain. He was commenting on a statement by Foreign Secretary Anthony Eden to the House of Commons in London Tuesday.

Eden said he had "always believed it should be possible to find a solution of differences between this country and Egypt which satisfied the legitimate national aspirations of the Egyptian people and at the same time did not jeopardize the security of the free world."

The differences stem from British garrisoning of the 101-mile long Suez Canal and joint British-Egyptian rule of the Sudan, a cotton-growing region of almost a million square miles on the Upper Nile, under old treaties Egypt declared void in mid-October.

Two U.S. State Department officials, Counselor Louis D. Mott and the Chief of Mission, William L. Clayton, are in charge of the Egyptian-Sudan division in Washington, and will be in the Sudan for a three-week fact-finding trip in the Sudan. Their reports may play an important part in a solution to the crisis.

Albrecht to Show  
Hudson Bay Film

C. J. Albrecht will present his color lecture-film "Hudson Bay Country" in the Michigan State College Auditorium Saturday, at 8 p.m. His presentation is in conjunction with the world travel series.

Albrecht will be followed by Betty B. Brooks on Feb. 16. Brooks will present his lecture-film "Passport to Safariland."

## Spring Draft Call Takes Drastic Cut



British infantrymen climb over wall into courtyard of Egyptian police headquarters during fierce fighting in Ismailia, British Egypt, on one side and police and guerillas on the other fought pitched battles that resulted in heavy casualties and touched off the riot in Cairo.

## Egypt Orders Fight With British Halted

Premier Sees 'Calm' as Method  
In Settling Canal Zone Issue

CAIRO, Egypt (AP)—Instructions have been issued to militant Egyptian nationalists in the Suez Canal Zone to cease guerilla activities against the British and cause no more trouble, reliable informants said last night.

Peace is returning to the zone after three months of terror.

The trend to end off passions and restore order has been noticeable since independent Ali Maher Pasha succeeded Wafdist Mustafa Nahas Pasha as premier Sunday night in the wake of Cairo rioting which caused 67 deaths and destructive fires.

Western diplomats agreed calm is essential if any new talks are to be held on a settlement of the British-Egyptian dispute.

The independent newspaper Al Ahram quoted the new premier as saying "we are ready to see what will be possible" in any new proposal from Britain. He was commenting on a statement by Foreign Secretary Anthony Eden to the House of Commons in London Tuesday.

Eden said he had "always believed it should be possible to find a solution of differences between this country and Egypt which satisfied the legitimate national aspirations of the Egyptian people and at the same time did not jeopardize the security of the free world."

The differences stem from British garrisoning of the 101-mile long Suez Canal and joint British-Egyptian rule of the Sudan, a cotton-growing region of almost a million square miles on the Upper Nile, under old treaties Egypt declared void in mid-October.

Two U.S. State Department officials, Counselor Louis D. Mott and the Chief of Mission, William L. Clayton, are in charge of the Egyptian-Sudan division in Washington, and will be in the Sudan for a three-week fact-finding trip in the Sudan. Their reports may play an important part in a solution to the crisis.

Albrecht to Show  
Hudson Bay Film

C. J. Albrecht will present his color lecture-film "Hudson Bay Country" in the Michigan State College Auditorium Saturday, at 8 p.m. His presentation is in conjunction with the world travel series.

Albrecht will be followed by Betty B. Brooks on Feb. 16. Brooks will present his lecture-film "Passport to Safariland."

## Hershey Gets Signals Crossed

Old Figures Quoted  
To Senate Group

WASHINGTON (AP)—A sharp drop in the rate of casualties in Korea and an increase in enlistments has made it possible to cut originally planned draft quotas. Selective Service said yesterday.

Mr. Gen. Lewis B. Hershey, Selective Service director, had indicated to the House Armed Services Committee that a sharp upturn was in prospect this spring. But an aide said later a figure Hershey used was based on old information and that the picture had changed.

Hershey in a written statement for the committee, said indications are the armed forces will call upon Selective Service for 430,000 men during the seven months ending next June 30.

A few hours later, however, a selective service spokesman telephoned news service to say that the figure was out-dated, that it had been prepared on the situation as it existed in November.

That would have represented a sharp upturn and would exceed the 80,000 figure for March, 1951, the peak month since the draft was reactivated in September, 1950.

Committee members did not question Hershey at the time.

The aide later said the sharp reduction in Korean casualties, largely attributed to current truce negotiations, had made it likely that the 430,000 figure which Hershey may have based on would be reduced considerably. He said it might be in the neighborhood of 275,000 to 300,000, "that is, unforeseen things."

The aide also said a rise in voluntary enlistments had made it possible to reduce draft quotas still further.

While the quotas are fixed by the defense department, the selective service spokesman said that it now appears that they will run between 40,000 and 50,000 men during the April-June period.

Since the draft was reactivated the monthly average has been just over 40,000. Young men 18 through 25 are subject to the draft.

WSE Sponsors  
Newspaper Study

One hundred daily and weekly newspapers, all published the same day are compiled in South Campus buildings A-5 and A-6 through Feb. 19.

The display, sponsored by the Written and Spoken English Department, is part of a study in news values as different papers in the country play them.

Daily papers can be found in A-5, weeklies in A-6.

## NEWS IN BRIEF

### German Police Raid Red Hangouts

BOON, Germany (AP)—Hundreds of West German police yesterday raided the hangouts of German Communists and members of the Neo-Nazi Party, accused by the Bonn government of plotting.

### Allied Planes Bomb Red Rail Lines

SEOUL, Korea (AP)—Allied planes yesterday added 132 cuts in Communist rail lines to the 13,000 which the U.S. Fifth Air Force estimates the "Red" slices in five and one-half months of Operation Strangle.

### Conservatives Win Confidence Vote

LONDON (AP)—Prime Minister Churchill's Conservatives beat the Labor Party move for no confidence on the Austerity Program with a vote of 309 to 274 yesterday. Churchill would have had to resign if the motion had carried.

### Truman Calls McCarthy Pathological

WASHINGTON (AP)—President Truman upbraided Senator McCarthy (R-Wis.) yesterday as pathological and a character assassin. He said that if McCarthy ever had told the truth he, the President, has not found out about it.

# Michigan State News

Published on class days Monday through Friday, inclusive, during fall, winter and spring term except days after holidays, weekly during summer term, and one special Freshman issue between summer and fall term. Entered as second-class matter under act of March 1879 at the postoffice at East Lansing, Mich. Office located on third floor of Union Bldg. Member of the Inland Daily Press and The Associated College Press. National Advertising Service, Inc. The Associated Press is entitled exclusively to the use for republication of all the local news printed in this newspaper as well as all AP news dispatches.

**MANAGER** Dick Lane  
**EDITOR** Dan McCarty  
**ADVERTISING DIRECTOR** Frank Kane  
**CIRCULATION MANAGER** Jim Helmrich

## Editorially

### Why the Y?

The College YMCA ends its membership drive today. Publicity the organization has sent out on its activities during the month-long campaign to interest students is the first its leaders have seen fit to release on a large scale.

Anonymity is a by-word with the Y's members. Their activities, which include Spartan Forum, a campus affairs committee, and a yearly track and field day for Lansing children aren't set up with an eye toward publicity.

Worthwhile as these tangible functions of the Y are, its most important contribution to the campus is intangible, and therefore, little-known.

The Y works to set up a situation in which students can meet on an equal basis to understand each others' viewpoints—and themselves. Personal counseling and group discussions make up a large part of the Y program.

Because it is not an organization comparable to any other campus group in its goals, the Y often comes in for criticism by those who judge organizations on the basis of tangible achievements.

Such criticism comes from lack of understanding. If tangibles were the only measure of achievement, self-growth and self-understanding would be worthless.

Personal growth and achievement in the long run must develop from a situation in which individuals work with intangible factors—ideas and problems.

Through membership in the Y a student may contribute to campus life through community service and recreation programs.

In the service members can render, and in the understanding they gain from close associations, not formed on the competitive basis found in many groups, but on an individual and personal basis, men associating with the Y may gain that unexplainable and necessary thing which makes an activity really worth while.

### TV Goes Over Big

Farmers' Week visitors liked the college's daily TV demonstrations this week. They saw in action the possibilities in a collegiate television station which MSC's administrators have pointed out for a long time.

TV emanating from the college would include programs of help to many interest groups.

Farmers would have available such demonstrations as the one shown on tree grafting. Housewives would watch the latest methods of homemaking. Students, usually unwilling to learn, could glean information unknowingly. All this would come with an educational TV station.

Add to it the commercial shows of educational value which the college could channel from its station if it were granted a commercial license, and the picture of a well-rounded program is complete.

The Television Development and Home Economics Departments are already at work on educational television.

The TV department is adding the latest equipment for use in student training now and actual broadcasting later, if the allocation of a channel comes from the FCC.

Public service programs are currently produced weekly on WJBL-TV through the Home Ec. Department. The shows are written, planned, and produced on the campus and taken directly to the Detroit station. Talent for those "packaged" programs, as well as ideas come from MSC instructors. The shows are based on practical education that the housewife appreciates.

There is no other type of institution which could contribute so much to watcher and listener education through television.

MSC has represented its request for a commercial channel which would allow for supplementing the college's educational programs with good commercial showings that otherwise could not be handled. Symphonies, occasional congressional hearings, and other types of programs could be added if the college were permitted to operate on a commercial basis.

The college is ready to contribute. But at present all it can do is wait for the FCC.

### New Committee Chairmen Named

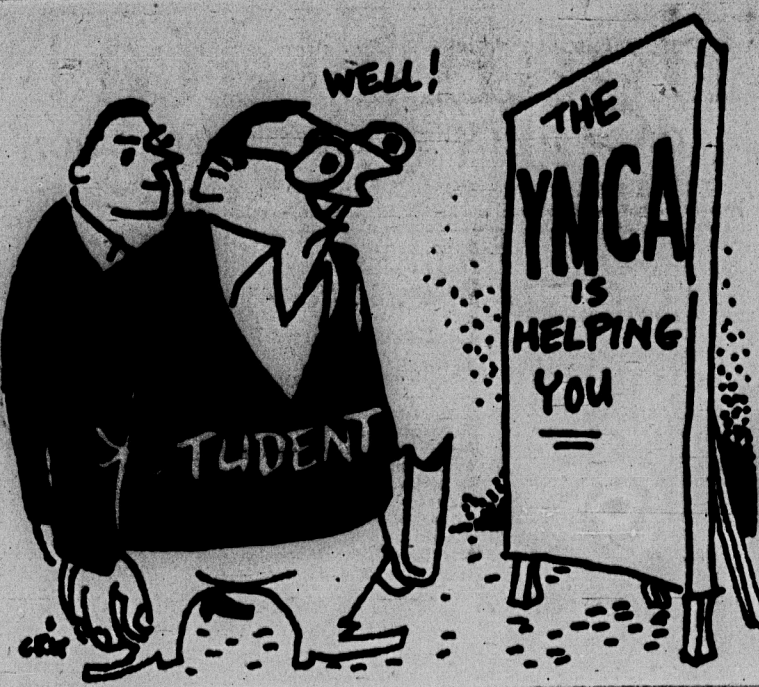
Appointments of two new Student Government committee chairmen were announced yesterday.

The appointments were approved by the Student Congress Wednesday night. The committees created by resolutions, Bob Hale, speaker pro tem, explained. New chairmen are Don Davis, appropriations committee, and Joyce Blaise, original committee.

The Rocky Mountain National Park in Colorado was opened in 1915.

Ruin your feet!  
Learn to dance from  
the Spartan Dance  
Issue. Why take lessons?  
Do it the hard way.

Spartan-Out Tuesday



J. M. Roberts, Jr.

## Withdrawal of U. S. Troops From Europe Unlikely

By J. M. ROBERTS, JR.

Associated Press News Analyst

When will the United States withdraw her troops from Europe?

My friend Howard Blakeslee, Associated Press science editor who intellectual curiosity extends far beyond that single field, almost mumbled me with that one this past Wednesday.

Thinking of defense program schedules, I almost said "A couple of years." But something stopped me, and when I did reply, it was, "Why, probably never." Meaning within time that we can foresee.

Harold Callender, veteran foreign correspondent, discussed it in Thursday's New York Times in a dispatch from Paris.

A Europe, he said, the question is—Would United States opinion be more or less inclined to keep troops in Europe if a European army might tend to split Europe off from the Atlantic community and hasten the withdrawal of U.S. troops?

American officials have been trying to convince this school of thought that the more Europe does for herself the more America will be inclined to help.

Well, there seems to be little doubt that if a dependable European army is formed, this will be the subject of the greatest debate of 1950 or 51.

By that time America will be growing awfully weary of the military program's interference with their hitherto steadily increasing standard of living. And they may be worried about the possibilities of an American army in Europe becoming involved in wars not of our choosing.

There is, of course, the possibility which has been mentioned in this column before, that instead of waiting to bring the troops home, they will be demanding a way to get it over with.

But if Europe appears to multiply its opinion on this side as able

to do for herself the full job of defense against Russian aggression, and if this reduces world tensions as the diplomats hope it will, the question of bringing the boys home will become as real as it was in 1945.

The answer, however, will be that America's war potential will still remain the great deterrent whenever Europe quarrels from now on. Two great wars have been started by Europeans in this century on the premise that America would not intervene, and on the possibility that even Britain would not.

American troops in Germany, by their mere presence and vulnerability to attack, resolve the question of American intervention for as long as they are there. Whoever attacks across middle Europe will be attacking them, and the aggressor will be at war with the United States.

This is a fundamental of the containment policy designed to keep the peace. As long as there is doubt about Russia's intentions—and that doubt seems likely to exist for as long as we live unless resolved by war—withdrawal of American troops from Europe would be an invitation to disaster.

## CAMPUS

WHERE THE STUDENTS SHOP FIRST CLASSIFIED

### AUTOMOTIVE

1946 Plymouth sedan, 4 door, 220 cu. in. engine, 10 speed, one 22" wheel, set and tires. Phone 4-2301 evenings.

1946 Ford sedan, 4 door, 220 cu. in. engine, 10 speed, one 22" wheel, set and tires. Phone 4-2301 evenings.

1946 Ford sedan, 4 door, 220 cu. in. engine, 10 speed, one 22" wheel, set and tires. Phone 4-2301 evenings.

### FOR SALE

Two Tuxedos, sizes 36 and 40. Excellent condition. Phone 4-6312, 81.

3-PIECE single breasted tuxedo, size 36 short. Call 8-000 between 9 a.m. and 5 p.m.

FURNITURE—Unfurnished chests, bookcases, drop-leaf tables, linens, carpet, mattresses, springs, beds, student desks and chairs.

Complete Home Furnishings—Use our Easy Payment Plan special consideration given students and teachers.

LANSING WAREHOUSE FURNITURE CO.  
315-315 E. Michigan Ave. — Ph. 4-1540

### SERVICE

STUDENT applications, passports and many identification matters now being taken at Hicks Studio, over Stuart Store. Phone 4-6100 for appointments.

FRATERNITIES and fraternities see about composite pictures, come to Hicks Studio, over Stuart Store. Phone 4-6100 for appointments.

TYPEWRITERS SALES—RENTALS

WOLVERINE TYPEWRITER CO.  
117 E. Kalamazoo — Phone 2-443

GENERAL TYPEWRITERS & SERVICE Co. Excellent knowledge of scientific terms. Phone 4-2301.

SEE US

For those party hats and neckties. We service all sizes and styles. In stock at all times.

HOEFELINGER BAKING CO.  
Across from State Theater

HOUSING

FIRST floor, two bedrooms, two baths, two closets, \$45.00.

LARGE ROOMS, modern kitchen, for women, located in quiet building. Phone 4-6100 after 5 p.m.

SINGLE ROOM, modern kitchen, for women, located in quiet building. Phone 4-6100 after 5 p.m.

SPARTAN, HALL, double rooms for men, located in quiet building. Phone 4-6100 after 5 p.m.

EAST LANSING, modern kitchen, for women, located in quiet building. Phone 4-6100 after 5 p.m.

RENT A TUX—500 Centre. Phone 4-1113

### FOR SALE

SEE ME FIRST—I HAVE IT

Country home, 10 acres, 4 bedrooms, 2 baths, 2 fireplaces, 2 porches, 2 garages, 2 swimming pools, 2 tennis courts, 2 golf courses, 2 fishing ponds, 2 hunting grounds, 2 game preserves, 2 nature preserves, 2 state parks, 2 national parks, 2 federal parks, 2 state forests, 2 national forests, 2 federal forests, 2 state game lands, 2 national game lands, 2 federal game lands, 2 state wildlife refuges, 2 national wildlife refuges, 2 federal wildlife refuges, 2 state parks, 2 national parks, 2 federal parks, 2 state forests, 2 national forests, 2 federal forests, 2 state game lands, 2 national game lands, 2 federal game lands, 2 state wildlife refuges, 2 national wildlife refuges, 2 federal wildlife refuges, 2 state parks, 2 national parks, 2 federal parks, 2 state forests, 2 national forests, 2 federal forests, 2 state game lands, 2 national game lands, 2 federal game lands, 2 state wildlife refuges, 2 national wildlife refuges, 2 federal wildlife refuges, 2 state parks, 2 national parks, 2 federal parks, 2 state forests, 2 national forests, 2 federal forests, 2 state game lands, 2 national game lands, 2 federal game lands, 2 state wildlife refuges, 2 national wildlife refuges, 2 federal wildlife refuges, 2 state parks, 2 national parks, 2 federal parks, 2 state forests, 2 national forests, 2 federal forests, 2 state game lands, 2 national game lands, 2 federal game lands, 2 state wildlife refuges, 2 national wildlife refuges, 2 federal wildlife refuges, 2 state parks, 2 national parks, 2 federal parks, 2 state forests, 2 national forests, 2 federal forests, 2 state game lands, 2 national game lands, 2 federal game lands, 2 state wildlife refuges, 2 national wildlife refuges, 2 federal wildlife refuges, 2 state parks, 2 national parks, 2 federal parks, 2 state forests, 2 national forests, 2 federal forests, 2 state game lands, 2 national game lands, 2 federal game lands, 2 state wildlife refuges, 2 national wildlife refuges, 2 federal wildlife refuges, 2 state parks, 2 national parks, 2 federal parks, 2 state forests, 2 national forests, 2 federal forests, 2 state game lands, 2 national game lands, 2 federal game lands, 2 state wildlife refuges, 2 national wildlife refuges, 2 federal wildlife refuges, 2 state parks, 2 national parks, 2 federal parks, 2 state forests, 2 national forests, 2 federal forests, 2 state game lands, 2 national game lands, 2 federal game lands, 2 state wildlife refuges, 2 national wildlife refuges, 2 federal wildlife refuges, 2 state parks, 2 national parks, 2 federal parks, 2 state forests, 2 national forests, 2 federal forests, 2 state game lands, 2 national game lands, 2 federal game lands, 2 state wildlife refuges, 2 national wildlife refuges, 2 federal wildlife refuges, 2 state parks, 2 national parks, 2 federal parks, 2 state forests, 2 national forests, 2 federal forests, 2 state game lands, 2 national game lands, 2 federal game lands, 2 state wildlife refuges, 2 national wildlife refuges, 2 federal wildlife refuges, 2 state parks, 2 national parks, 2 federal parks, 2 state forests, 2 national forests, 2 federal forests, 2 state game lands, 2 national game lands, 2 federal game lands, 2 state wildlife refuges, 2 national wildlife refuges, 2 federal wildlife refuges, 2 state parks, 2 national parks, 2 federal parks, 2 state forests, 2 national forests, 2 federal forests, 2 state game lands, 2 national game lands, 2 federal game lands, 2 state wildlife refuges, 2 national wildlife refuges, 2 federal wildlife refuges, 2 state parks, 2 national parks, 2 federal parks, 2 state forests, 2 national forests, 2 federal forests, 2 state game lands, 2 national game lands, 2 federal game lands, 2 state wildlife refuges, 2 national wildlife refuges, 2 federal wildlife refuges, 2 state parks, 2 national parks, 2 federal parks, 2 state forests, 2 national forests, 2 federal forests, 2 state game lands, 2 national game lands, 2 federal game lands, 2 state wildlife refuges, 2 national wildlife refuges, 2 federal wildlife refuges, 2 state parks, 2 national parks, 2 federal parks, 2 state forests, 2 national forests, 2 federal forests, 2 state game lands, 2 national game lands, 2 federal game lands, 2 state wildlife refuges, 2 national wildlife refuges, 2 federal wildlife refuges, 2 state parks, 2 national parks, 2 federal parks, 2 state forests, 2 national forests, 2 federal forests, 2 state game lands, 2 national game lands, 2 federal game lands, 2 state wildlife refuges, 2 national wildlife refuges, 2 federal wildlife refuges, 2 state parks, 2 national parks, 2 federal parks, 2 state forests, 2 national forests, 2 federal forests, 2 state game lands, 2 national game lands, 2 federal game lands, 2 state wildlife refuges, 2 national wildlife refuges, 2 federal wildlife refuges, 2 state parks, 2 national parks, 2 federal parks, 2 state forests, 2 national forests, 2 federal forests, 2 state game lands, 2 national game lands, 2 federal game lands, 2 state wildlife refuges, 2 national wildlife refuges, 2 federal wildlife refuges, 2 state parks, 2 national parks, 2 federal parks, 2 state forests, 2 national forests, 2 federal forests, 2 state game lands, 2 national game lands, 2 federal game lands, 2 state wildlife refuges, 2 national wildlife refuges, 2 federal wildlife refuges, 2 state parks, 2 national parks, 2 federal parks, 2 state forests, 2 national forests, 2 federal forests, 2 state game lands, 2 national game lands, 2 federal game lands, 2 state wildlife refuges, 2 national wildlife refuges, 2 federal wildlife refuges, 2 state parks, 2 national parks, 2 federal parks, 2 state forests, 2 national forests, 2 federal forests, 2 state game lands, 2 national game lands, 2 federal game lands, 2 state wildlife refuges, 2 national wildlife refuges, 2 federal wildlife refuges, 2 state parks, 2 national parks, 2 federal parks, 2 state forests, 2 national forests, 2 federal forests, 2 state game lands, 2 national game lands, 2 federal game lands, 2 state wildlife refuges, 2 national wildlife refuges, 2 federal wildlife refuges, 2 state parks, 2 national parks, 2 federal parks, 2 state forests, 2 national forests, 2 federal forests, 2 state game lands, 2 national game lands, 2 federal game lands, 2 state wildlife refuges, 2 national wildlife refuges, 2 federal wildlife refuges, 2 state parks, 2 national parks, 2 federal parks, 2 state forests, 2 national forests, 2 federal forests, 2 state game lands, 2 national game lands, 2 federal game lands, 2 state wildlife refuges, 2 national wildlife refuges, 2 federal wildlife refuges, 2 state parks, 2 national parks, 2 federal parks, 2 state forests, 2 national forests, 2 federal forests, 2 state game lands, 2 national game lands, 2 federal game lands, 2 state wildlife refuges, 2 national wildlife refuges, 2 federal wildlife refuges, 2 state parks, 2 national parks, 2 federal parks, 2 state forests, 2 national forests, 2 federal forests, 2 state game lands, 2 national game lands, 2 federal game lands, 2 state wildlife refuges, 2 national wildlife refuges, 2 federal wildlife refuges, 2 state parks, 2 national parks, 2 federal parks, 2 state forests, 2 national forests, 2 federal forests, 2 state game lands, 2 national game lands, 2 federal game lands, 2 state wildlife refuges, 2 national wildlife refuges, 2 federal wildlife refuges, 2 state parks, 2 national parks, 2 federal parks, 2 state forests, 2 national forests, 2 federal forests, 2 state game lands, 2 national game lands, 2 federal game lands, 2 state wildlife refuges, 2 national wildlife refuges, 2 federal wildlife refuges, 2 state parks, 2 national parks, 2 federal parks, 2 state forests, 2 national forests, 2 federal forests, 2 state game lands, 2 national game lands, 2 federal game lands, 2 state wildlife refuges, 2 national wildlife refuges, 2 federal wildlife refuges, 2 state parks, 2 national parks, 2 federal parks, 2 state forests, 2 national forests, 2 federal forests, 2 state game lands, 2 national game lands, 2 federal game lands, 2 state wildlife refuges, 2 national wildlife refuges, 2 federal wildlife refuges, 2 state parks, 2 national parks, 2 federal parks, 2 state forests, 2 national forests, 2 federal forests, 2 state game lands, 2 national game lands, 2 federal game lands, 2 state wildlife refuges, 2 national wildlife refuges, 2 federal wildlife refuges, 2 state parks, 2 national parks, 2 federal parks, 2 state forests, 2 national forests, 2 federal forests, 2 state game lands, 2 national game lands, 2 federal game lands, 2 state wildlife refuges, 2 national wildlife refuges, 2 federal wildlife refuges, 2 state parks, 2 national parks, 2 federal parks, 2 state forests, 2 national forests, 2 federal forests, 2 state game lands, 2 national game lands, 2 federal game lands, 2 state wildlife refuges, 2 national wildlife refuges, 2 federal wildlife refuges, 2 state parks, 2 national parks, 2 federal parks, 2 state forests, 2 national forests, 2 federal forests, 2 state game lands, 2 national game lands, 2 federal game lands, 2 state wildlife refuges, 2 national wildlife refuges, 2 federal wildlife refuges, 2 state parks, 2 national parks, 2 federal parks, 2 state forests, 2 national forests, 2 federal forests, 2 state game lands, 2 national game lands, 2 federal game lands, 2 state wildlife refuges, 2 national wildlife refuges, 2 federal wildlife refuges, 2 state parks, 2 national parks, 2 federal parks, 2 state forests, 2 national forests, 2 federal forests, 2 state game lands, 2 national game lands, 2 federal game lands, 2 state wildlife refuges, 2 national wildlife refuges, 2 federal wildlife refuges, 2 state parks, 2 national parks, 2 federal parks, 2 state forests, 2 national forests, 2 federal forests, 2 state game lands, 2 national game lands, 2 federal game lands, 2 state wildlife refuges, 2 national wildlife refuges, 2 federal wildlife refuges, 2 state parks, 2 national parks, 2 federal parks, 2 state forests, 2 national forests, 2 federal forests, 2 state game lands, 2 national game lands, 2 federal game lands, 2 state wildlife refuges, 2 national wildlife refuges, 2 federal wildlife refuges, 2 state parks, 2 national parks, 2 federal parks, 2 state forests, 2 national forests, 2 federal forests, 2 state game lands, 2 national game lands, 2 federal game lands, 2 state wildlife refuges, 2 national wildlife refuges, 2 federal wildlife refuges, 2 state parks, 2 national parks, 2 federal parks, 2 state forests, 2 national forests, 2 federal forests, 2 state game lands, 2 national game lands, 2 federal game lands, 2 state wildlife refuges, 2 national wildlife refuges, 2 federal wildlife refuges, 2 state parks, 2 national parks, 2 federal parks, 2 state forests, 2 national forests, 2 federal forests, 2 state game lands, 2 national game lands, 2 federal game lands, 2 state wildlife refuges, 2 national wildlife refuges, 2 federal wildlife refuges, 2 state parks, 2 national parks, 2 federal parks, 2 state forests, 2 national forests, 2 federal forests, 2 state game lands, 2 national game lands, 2 federal game lands, 2 state wildlife refuges, 2 national wildlife refuges, 2 federal wildlife refuges, 2 state parks, 2 national parks, 2 federal parks, 2 state forests, 2 national forests, 2 federal forests, 2 state game lands, 2 national game lands, 2 federal game lands, 2 state wildlife refuges, 2 national wildlife refuges, 2 federal wildlife refuges, 2 state parks, 2 national parks, 2 federal parks, 2 state forests, 2 national forests, 2 federal forests, 2 state game lands, 2 national game lands, 2 federal game lands, 2 state wildlife refuges, 2 national wildlife refuges, 2 federal wildlife refuges, 2 state parks, 2 national parks, 2 federal parks, 2 state forests, 2 national forests, 2 federal forests, 2 state game lands, 2 national game lands, 2 federal game lands, 2 state wildlife refuges, 2 national wildlife refuges, 2 federal wildlife refuges, 2 state parks, 2 national parks, 2 federal parks, 2 state forests, 2 national forests, 2 federal forests, 2 state game lands, 2 national game lands, 2 federal game lands, 2 state wildlife refuges, 2 national wildlife refuges, 2 federal wildlife refuges, 2 state parks, 2 national parks, 2 federal parks, 2 state forests, 2 national forests, 2 federal forests, 2 state game lands, 2 national game lands, 2 federal game lands, 2 state wildlife refuges, 2 national wildlife refuges, 2 federal wildlife refuges, 2 state parks, 2 national parks, 2 federal parks, 2 state forests, 2 national forests, 2 federal forests, 2 state game lands, 2 national game lands, 2 federal game lands, 2 state wildlife refuges, 2 national wildlife refuges, 2 federal wildlife refuges, 2 state parks, 2 national parks, 2 federal parks, 2 state forests, 2 national forests, 2 federal forests, 2 state game lands, 2 national game lands, 2 federal game lands, 2 state wildlife refuges, 2 national wildlife refuges, 2 federal wildlife refuges, 2 state parks, 2 national parks, 2 federal parks, 2 state forests, 2 national forests, 2 federal forests, 2 state game lands, 2 national game lands, 2 federal game lands, 2 state wildlife refuges, 2 national wildlife refuges, 2 federal wildlife refuges, 2 state parks, 2 national parks, 2 federal parks, 2 state forests, 2 national forests, 2 federal forests, 2 state game lands, 2 national game lands, 2 federal game lands, 2 state wildlife refuges, 2 national wildlife refuges, 2 federal wildlife refuges, 2 state parks, 2 national parks, 2 federal parks, 2 state forests, 2 national forests, 2 federal forests, 2 state game lands, 2 national game lands, 2 federal game lands, 2 state wildlife refuges, 2 national wildlife refuges, 2 federal wildlife refuges, 2 state parks, 2 national parks, 2 federal parks, 2 state forests, 2 national forests, 2 federal forests, 2 state game lands, 2 national game lands, 2 federal game lands, 2 state wildlife refuges, 2 national wildlife refuges, 2 federal wildlife refuges, 2 state parks, 2 national parks, 2 federal parks, 2 state forests, 2 national forests, 2 federal forests, 2 state game lands, 2 national game lands, 2 federal game lands, 2 state wildlife refuges, 2 national wildlife refuges, 2 federal wildlife refuges, 2 state parks, 2 national parks, 2 federal parks, 2 state forests, 2 national forests, 2 federal forests, 2 state game lands, 2 national game lands, 2 federal game lands, 2 state wildlife refuges, 2 national wildlife refuges, 2 federal wildlife refuges, 2 state parks, 2 national parks, 2 federal parks, 2 state forests, 2 national forests, 2 federal forests, 2 state game lands, 2 national game lands, 2 federal game lands, 2 state wildlife refuges, 2 national wildlife refuges, 2 federal wildlife refuges, 2 state parks, 2 national parks, 2 federal parks, 2 state forests, 2 national forests, 2 federal forests, 2 state game lands, 2 national game lands, 2 federal game lands, 2 state wildlife refuges, 2 national wildlife refuges, 2 federal wildlife refuges, 2 state parks, 2 national parks, 2 federal parks, 2 state forests, 2 national forests, 2 federal forests, 2 state game lands, 2 national game lands, 2 federal game lands, 2 state wildlife refuges, 2 national wildlife refuges, 2 federal wildlife refuges, 2 state parks, 2 national parks, 2 federal parks, 2 state forests, 2 national forests, 2 federal forests, 2 state game lands, 2 national game lands, 2 federal game lands, 2 state wildlife refuges, 2 national wildlife refuges, 2 federal wildlife refuges, 2 state parks, 2 national parks, 2 federal parks, 2 state forests, 2 national forests, 2 federal forests, 2 state game lands, 2 national game lands, 2 federal game lands, 2 state wildlife refuges, 2 national wildlife refuges, 2 federal wildlife refuges, 2 state parks, 2 national parks, 2 federal parks, 2 state forests, 2 national forests, 2 federal forests, 2 state game lands, 2 national game lands, 2 federal game lands, 2 state wildlife refuges, 2 national wildlife refuges, 2 federal wildlife refuges, 2 state parks, 2 national parks, 2 federal parks, 2 state forests, 2 national forests, 2 federal forests, 2 state game lands, 2 national game lands, 2 federal game lands, 2 state wildlife refuges, 2 national wildlife refuges, 2 federal wildlife refuges, 2 state parks, 2 national parks, 2 federal parks, 2 state forests, 2 national forests, 2 federal forests, 2 state game lands, 2 national game lands, 2 federal game lands, 2 state wildlife refuges, 2 national wildlife refuges, 2 federal wildlife refuges, 2 state parks, 2 national parks, 2 federal parks, 2 state forests, 2 national forests, 2 federal forests, 2 state game lands, 2 national game lands, 2 federal game lands, 2 state wildlife refuges, 2 national wildlife refuges, 2 federal wildlife refuges, 2 state parks, 2 national parks, 2 federal parks, 2 state forests, 2 national forests, 2 federal forests, 2 state game lands, 2 national game lands, 2 federal game lands, 2 state wildlife refuges, 2 national wildlife refuges, 2 federal wildlife refuges, 2 state parks, 2 national parks, 2 federal parks, 2 state forests, 2 national forests, 2 federal forests, 2 state game lands, 2 national game lands, 2 federal game lands, 2 state wildlife refuges, 2 national wildlife refuges, 2 federal wildlife refuges, 2 state parks, 2 national parks, 2 federal parks, 2 state forests, 2 national forests, 2 federal forests, 2 state game lands, 2 national game lands, 2 federal game lands, 2 state wildlife refuges, 2 national wildlife refuges, 2 federal wildlife refuges, 2 state parks, 2 national parks, 2 federal parks, 2 state forests, 2 national forests, 2 federal forests, 2 state game lands, 2 national game lands, 2 federal game lands, 2 state wildlife refuges, 2 national wildlife refuges, 2 federal wildlife refuges, 2 state parks, 2 national parks, 2 federal parks, 2 state forests, 2 national forests, 2 federal forests, 2 state game lands, 2 national game lands, 2 federal game lands, 2 state wildlife refuges, 2 national wildlife refuges, 2 federal wildlife refuges, 2 state parks, 2 national parks, 2 federal parks, 2 state forests, 2 national forests, 2 federal forests, 2 state game lands, 2 national game lands, 2 federal game lands, 2 state wildlife refuges, 2 national wildlife refuges, 2 federal wildlife refuges, 2 state parks, 2 national parks, 2 federal parks, 2 state forests, 2 national forests, 2 federal forests, 2 state game lands, 2 national game lands, 2 federal game lands, 2 state wildlife refuges, 2 national wildlife refuges, 2 federal wildlife refuges, 2 state parks, 2 national parks, 2 federal parks, 2 state forests, 2 national forests, 2 federal forests, 2 state game lands, 2 national game lands, 2 federal game lands, 2 state wildlife refuges, 2 national wildlife refuges, 2 federal wildlife refuges, 2 state parks, 2 national parks, 2 federal parks, 2 state forests, 2 national forests, 2 federal forests, 2 state game lands, 2 national game lands, 2 federal game lands, 2 state wildlife refuges, 2 national wildlife refuges, 2 federal wildlife refuges, 2 state parks, 2 national parks, 2 federal parks, 2 state forests, 2 national forests, 2 federal forests, 2 state game lands, 2 national game lands, 2 federal game lands, 2 state wildlife refuges, 2 national wildlife refuges, 2 federal wildlife refuges, 2 state parks, 2 national parks, 2 federal parks, 2 state forests, 2 national forests, 2 federal forests, 2 state game lands, 2 national game lands, 2 federal game lands, 2 state wildlife refuges, 2 national wildlife refuges, 2 federal wildlife refuges, 2 state parks, 2 national parks, 2 federal parks, 2 state forests, 2 national forests, 2 federal forests, 2 state game lands, 2 national game lands, 2 federal game lands, 2 state wildlife refuges, 2 national wildlife refuges, 2 federal wildlife refuges, 2 state parks, 2 national parks, 2 federal parks, 2 state forests, 2 national forests, 2 federal forests, 2 state game lands, 2 national game lands, 2 federal game lands, 2 state wildlife refuges, 2 national wildlife refuges, 2 federal wildlife refuges, 2 state parks, 2 national parks, 2 federal parks, 2 state forests, 2 national forests, 2 federal forests, 2 state game lands, 2 national game lands, 2 federal game lands, 2 state wildlife refuges, 2 national wildlife refuges, 2 federal wildlife refuges, 2 state parks, 2 national parks, 2 federal parks, 2 state forests, 2 national forests, 2 federal forests, 2 state game lands, 2 national game lands, 2 federal game lands, 2 state wildlife refuges, 2 national wildlife refuges, 2 federal wildlife refuges, 2 state parks, 2 national parks, 2 federal parks, 2 state forests, 2 national forests, 2 federal forests, 2 state game lands, 2 national game lands, 2 federal game lands, 2 state wildlife refuges, 2 national wildlife refuges, 2 federal wildlife refuges, 2 state parks, 2 national parks, 2 federal parks, 2 state forests, 2 national forests, 2 federal forests, 2 state game lands, 2 national game lands, 2 federal game lands, 2 state wildlife refuges, 2 national wildlife refuges, 2 federal wildlife refuges, 2 state parks, 2 national parks, 2 federal parks, 2 state forests, 2 national forests, 2 federal forests, 2 state game lands, 2 national game lands, 2 federal game lands, 2 state wildlife refuges, 2 national wildlife refuges, 2 federal wildlife refuges, 2 state parks, 2 national parks, 2 federal parks, 2 state forests, 2 national forests, 2 federal forests, 2 state game lands, 2 national game lands, 2 federal game lands, 2 state wildlife refuges, 2 national wildlife refuges, 2 federal wildlife refuges, 2 state parks, 2 national parks, 2 federal parks, 2 state forests, 2 national forests, 2 federal forests, 2 state game lands, 2 national game lands, 2 federal game lands, 2 state wildlife refuges, 2 national wildlife refuges, 2 federal wildlife refuges, 2 state parks, 2 national parks, 2 federal parks, 2 state forests, 2 national forests, 2 federal forests, 2 state game lands, 2 national game lands, 2 federal game lands, 2 state wildlife refuges, 2 national wildlife refuges, 2 federal wildlife refuges, 2 state parks, 2 national parks, 2 federal parks, 2 state forests, 2 national forests, 2 federal forests, 2 state game lands, 2 national game lands, 2 federal game lands, 2 state wildlife refuges, 2 national wildlife refuges, 2 federal wildlife refuges, 2 state parks, 2 national parks, 2 federal parks, 2 state forests, 2 national forests, 2 federal forests, 2 state game lands, 2 national game lands, 2 federal game lands, 2 state wildlife refuges, 2 national wildlife refuges, 2 federal wildlife refuges, 2 state parks, 2 national parks, 2 federal parks, 2 state forests, 2 national forests, 2 federal forests, 2 state game lands, 2 national game lands, 2 federal game lands, 2 state wildlife refuges, 2 national wildlife refuges, 2 federal wildlife refuges, 2 state parks, 2 national parks, 2 federal parks, 2 state forests, 2 national forests, 2 federal forests, 2 state game lands, 2 national game lands, 2 federal game lands, 2 state wildlife refuges, 2 national wildlife refuges, 2 federal wildlife refuges, 2 state parks, 2 national parks, 2 federal parks, 2 state forests, 2 national forests, 2 federal forests, 2 state game lands, 2 national game lands, 2 federal game lands, 2 state wildlife refuges, 2 national wildlife refuges, 2 federal wildlife refuges, 2 state parks, 2 national parks, 2 federal parks, 2 state forests, 2 national forests, 2 federal forests, 2 state game lands, 2 national game lands, 2 federal game lands, 2 state wildlife refuges, 2 national wildlife refuges, 2 federal wildlife refuges, 2 state parks, 2 national parks, 2 federal parks, 2 state forests, 2 national forests, 2 federal forests, 2 state game lands, 2 national game lands, 2 federal game lands, 2 state wildlife refuges, 2 national wildlife refuges, 2 federal wildlife refuges, 2 state parks, 2 national parks, 2 federal parks, 2 state forests, 2 national forests, 2 federal forests, 2 state game lands, 2 national game lands, 2 federal game lands, 2 state wildlife refuges, 2 national wildlife refuges, 2 federal wildlife refuges, 2 state parks, 2 national parks, 2 federal parks, 2 state forests, 2 national forests, 2 federal forests, 2 state game lands, 2 national game lands, 2 federal game lands, 2 state wildlife refuges, 2 national wildlife refuges, 2 federal wildlife refuges, 2 state parks, 2 national parks, 2 federal parks, 2 state forests, 2 national forests, 2 federal forests, 2 state game lands, 2 national game lands, 2 federal game lands, 2 state wildlife refuges, 2 national wildlife refuges, 2 federal wildlife refuges, 2 state parks, 2 national parks, 2 federal parks, 2 state forests, 2 national forests, 2 federal forests, 2 state game lands, 2 national game lands, 2 federal game lands, 2 state wildlife refuges, 2 national wildlife refuges, 2 federal wildlife refuges, 2 state parks, 2 national parks, 2 federal parks, 2 state forests, 2 national forests, 2 federal forests, 2 state game lands, 2 national game lands, 2 federal game lands, 2 state wildlife refuges, 2 national wildlife refuges, 2 federal wildlife refuges, 2 state parks, 2 national parks, 2 federal parks, 2 state forests, 2 national forests, 2 federal forests, 2 state game lands, 2 national game lands, 2 federal game lands, 2 state wildlife refuges, 2 national wildlife refuges, 2 federal wildlife refuges, 2 state parks, 2 national parks, 2 federal parks, 2 state forests, 2 national forests, 2 federal forests, 2 state game lands, 2 national game lands, 2 federal game lands, 2 state wildlife refuges, 2 national wildlife refuges, 2 federal wildlife refuges, 2 state parks, 2 national parks, 2 federal parks, 2 state forests, 2 national forests, 2 federal forests, 2 state game lands, 2 national game lands, 2 federal game lands, 2 state wildlife refuges, 2 national wildlife refuges, 2 federal wildlife refuges, 2 state parks, 2 national parks, 2 federal parks, 2 state forests, 2 national forests, 2 federal forests, 2 state game lands, 2 national game lands, 2 federal game lands, 2 state wildlife refuges, 2 national wildlife refuges, 2 federal wildlife refuges, 2 state parks, 2 national parks, 2 federal parks, 2 state forests, 2 national forests, 2 federal forests, 2 state game lands, 2 national game lands, 2 federal game lands, 2 state wildlife refuges, 2 national wildlife refuges, 2 federal wildlife refuges, 2 state parks, 2 national parks, 2 federal parks, 2 state forests, 2 national forests, 2 federal forests, 2 state game lands, 2 national game lands, 2 federal game lands, 2 state wildlife refuges, 2 national wildlife refuges, 2 federal wildlife refuges, 2 state parks, 2 national parks, 2 federal parks, 2 state forests, 2 national forests, 2 federal forests, 2 state game lands, 2 national game lands, 2 federal game lands, 2 state wildlife refuges, 2 national wildlife refuges, 2 federal wildlife refuges, 2 state parks, 2 national parks, 2 federal parks, 2 state forests, 2 national forests, 2 federal forests, 2 state game lands, 2 national game lands, 2 federal game lands, 2 state wildlife refuges, 2 national wildlife refuges, 2 federal wildlife refuges, 2 state parks, 2 national parks, 2 federal parks, 2 state forests, 2 national forests, 2 federal forests, 2 state game lands, 2 national game lands, 2 federal game lands, 2 state wildlife refuges, 2 national wildlife refuges, 2 federal wildlife refuges, 2 state parks, 2 national parks, 2 federal parks, 2 state forests, 2 national forests, 2 federal forests, 2 state game lands, 2 national game lands, 2 federal game lands, 2 state wildlife refuges, 2 national wildlife refuges, 2 federal wildlife refuges, 2 state parks, 2 national parks, 2 federal parks, 2 state forests, 2 national forests, 2 federal forests, 2 state game lands, 2 national game lands, 2 federal game lands, 2 state wildlife refuges, 2 national wildlife refuges, 2 federal wildlife refuges, 2 state parks, 2 national parks, 2 federal parks, 2 state forests, 2 national forests, 2 federal forests, 2 state game lands, 2 national game lands, 2 federal game lands, 2 state wildlife refuges, 2 national wildlife refuges, 2 federal wildlife refuges, 2 state parks, 2 national parks, 2 federal parks, 2 state forests, 2 national forests, 2 federal forests, 2 state game lands, 2 national game lands, 2 federal game lands, 2 state wildlife refuges, 2 national wildlife refuges, 2 federal wildlife refuges, 2 state parks, 2 national parks, 2 federal parks, 2 state forests, 2 national forests, 2 federal forests, 2 state game lands, 2 national game lands, 2 federal game lands, 2 state wildlife refuges, 2 national wildlife refuges, 2 federal wildlife refuges, 2 state parks, 2 national parks, 2 federal parks, 2 state forests, 2 national forests, 2 federal forests, 2 state game lands, 2 national game lands, 2 federal game lands, 2 state wildlife refuges, 2 national wildlife refuges, 2 federal wildlife refuges, 2 state parks, 2 national parks, 2 federal parks, 2 state forests, 2 national forests, 2 federal forests, 2 state game lands, 2 national game lands, 2 federal game lands, 2 state wildlife refuges, 2 national wildlife refuges, 2 federal wildlife refuges, 2 state parks, 2 national parks, 2 federal parks, 2 state forests, 2 national forests, 2 federal forests, 2 state game lands, 2 national

# Formal Term Parties Planned This Weekend

## Prizes Given Greek Dances

Prizes and tuxes will get J-Hop showing this weekend at several sorority parties.

The Omega formal dinner will feature Clare Fischer and orchestra in the Hotel Ballroom tonight. Favors presented to the men.

Prizes will be formed in the centerpieces of white and greens accented by the colors of the fraternities.

The Kappa Tau formal will be held at the Hotel Ballroom tomorrow evening.

The Phi Tau formal will be held at the Hotel Ballroom tomorrow evening.

The Phi Tau formal will be held at the Hotel Ballroom tomorrow evening.

The Phi Tau formal will be held at the Hotel Ballroom tomorrow evening.

The Phi Tau formal will be held at the Hotel Ballroom tomorrow evening.

The Phi Tau formal will be held at the Hotel Ballroom tomorrow evening.

The Phi Tau formal will be held at the Hotel Ballroom tomorrow evening.

The Phi Tau formal will be held at the Hotel Ballroom tomorrow evening.

The Phi Tau formal will be held at the Hotel Ballroom tomorrow evening.

The Phi Tau formal will be held at the Hotel Ballroom tomorrow evening.

The Phi Tau formal will be held at the Hotel Ballroom tomorrow evening.

The Phi Tau formal will be held at the Hotel Ballroom tomorrow evening.

## Campus

## Society

## Notes

Night Editor — Pat Yaroch

## MSC Skiers Enter Meet

Inter-collegiate ski races begin Saturday and Sunday at Boyne Mountain near Boyne City. The newly formed competition includes entries from University of Michigan, Wayne University, University of Detroit, Central Michigan College and Michigan State College, stated Fred Hodgson, local Ski Club president.

Tentative entries from MSC Ski Club are: Al Lutzburger, Boyne City, sophomore; Ethan Axmann, Lansing, junior; Bud Hayes, Gaylord, junior; Hugo Meyer, Lansing, sophomore; Karl Diebold, East Lansing, junior; Bill Carl, Midland, junior; and Fred Hodgson, Roseville, sophomore.

Five racers from each college will receive free bus tickets for the weekend from the Boyne Ski Club and three entries from each college will be given free lodging.

Events will feature downhill, slalom and combined competition.

## Scabbard and Blade to Fete New Actives

Scabbard and Blade will hold its initiation dance tonight in the Demonstration Hall from 9 to 12, according to Bob Vick, dance chairman.

Decorations for the dance will consist of a crepe paper false ceiling and colored tables along the sides of the dance floor.

Caret Jack Deboer and Leroy Jones will provide intermission entertainment with original skits.

All alumni members are cordially invited to the dance. It will be informal.

## German Art Work Featured in Union

German drawings are featured this month in the Art Room of the Union, including work done by Mathias Grunewald, Wolfgang Huber and Hans Holbein the Elder.

## Ballot Box

New members of Theta Xi fraternity are: Thomas A. Voth, Groesbeek, junior; Gordon Sattelmeyer, Detroit, junior; Rick Morris, Detroit, freshman; Bob McIntosh, Garden City, freshman; John Zimmermann, Cincinnati, Ohio, sophomore; Ed Throckmold, Fowlerville, freshman; Lou Bromley, Ann Arbor, junior; Tom Delahunt, Grand Rapids, junior; Bill Caust, Lansing, junior; John Dequett, Grand Rapids, junior; and John Davies, Grand Rapids, freshman.

New active in Omicron Nu, national home economics honorary, include: Bertha Chalko, Muskegon senior; Barbara Eckberg, Grand Rapids, senior; Bertha Kach, Chicago, Ill., senior; and Harriet Kline, Ithaca, senior.

Other new members are Marilyn Patterson, Akron, Ohio, senior; Anne Provo, Clarkville, Tennessee, senior; and Nancy Robinson, Burt, senior.

New freshmen in Delta Sigma Pi are: Dean H. J. Wengert, School of Business and Public Service, J. Carl Dorian, Charlotte, sophomore; James Leavitt, good, Charlotte, sophomore; John Baucous, Lansing, sophomore; Lawrence Sublett, Detroit, junior; David Hyman, Buffalo, N.Y., freshman; George Fritz, Princeton, N.J., sophomore; Mervin Cornish, Elkhart, Ind., senior; Alexander Zubok, Dearborn, senior; Nat Dellis, Manistique, freshman; Fred Kling, Grand Rapids, junior; Hugh Credille, Flint, senior; Ronald McCarthy, Bechtel, Harbor junior.

Alpha Epsilon Pi officers elected for winter term are: President, Gerald Mack, Niagara Falls, N.Y., senior; vice-president, Harry Hein, Brooklyn, N.Y., senior; treasurer, David Jones, Fight senior; secretary, Michael Wahl, Cliffside, N.J., junior; and member-at-large, Edwin Dean, Detroit, sophomore, and Lawrence

## Newman Elections Set for Weekend

MSC's Newman Club will hold final elections Friday night at 10:30 and Sunday at 10 a.m. and 2 p.m. at Newman Hall. Shirley Richards, publicity chairman, said that membership cards must be pre-ordered.

A roller skating party at the Palmer Skating Rink will be held Friday night at 8. Tickets are now on sale at Newman Hall for the party.



Patricia Greiner, Hart senior, models a new full-length dress and hoop skirt as part of the style show in the Auditorium yesterday. The show, sponsored for Farmers' Week by members of the Home Economics Department, featured 85 coeds modeling their own creations. Unusual materials were highlighted and models wore corsages designed by the Horticulture department. Prof. Margaret Ebern of the Home Economics Department acted as commentator of the fashion show.

## Union Board Slates Sing

Community songs, sponsored by the Union Board, will be held at 3 p.m. every Sunday in February in the Mixed Lounge of the Union.

Each week a new director will lead the singing. They will be chosen from the college and vicinity.

Sally Story, Grand Rapids senior, will begin the series this week by leading the group in singing old time favorites.

She will sing two solos. Chairman of this week's sing is Jim Sleak, Bay City, senior.

The Interior Department says 16 million acres of land still could be irrigated in Western states.

## Sororities to Host At Open Houses

Kappa Delta, Zeta Tau Alpha and Delta Gamma sororities will hold open houses Sunday from 3 to 6. These open houses are for anyone who is interested in seeing the new sorority houses on campus.

Tea and coffee will be served from 4 to 5 and all the guests will be shown through the houses.

## They Feel a Draft

Staffers of the George Washington University, "Hatched" point out that the university heating system is not up to par. Speaking of conditions in the Student Office Building, an editorial writer says, "We're cold."

# Anthony Records Hit MSC as J-Hop Nears

Ray Anthony records are spinning around campus as students are falling into the J-Hop mood.

Anthony and his orchestra will play both evenings of the dance. Featured vocalists of the group are Tommy Mercer, Gloria Craig, and the Skyliners. The band performs at over a hundred college dances a year.

Doormen in green satin tuxedos will greet the couples as they enter the Auditorium. Putting finishing touches on the "Out of This World" scheme has been the main project of the decoration committee.

For breakfast after the dance the Union Grill will be open until 2:30 Friday night and 1:30 Saturday night. Only students attending the J-Hop may come to the grill after the dance, said Duane Vernon, J-Hop chairman. Campus automobile regulations have been removed for the dance.

## Gamma Delta Plans Outing

Gamma Delta, Lutheran student club, has scheduled a "Winter Weekend." Members will leave Friday afternoon for St. Mary's Lake at Battle Creek and will return Sunday.

Many activities are scheduled for the outing, including ice skating, skiing, tobogganing. There will be social and square dancing in the evenings.

# SPUDNUTS

AMERICA'S FINEST FOOD CONFECTION

THE SPUDNUT SHOP

232 M.A.C.

Phone 8-9871

SPECIAL PARTY RATES

## FLORICULTURE PARTY

Sat., Feb. 2nd — 9:00 — 12:00

MASONIC TEMPLE

314 M.A.C.

Dancing and Refreshments

All Floriculture Students  
Are Cordially Invited.

Don't Miss  
RAY ANTHONY  
when he plays  
the J-HOP  
Feb. 8th and 9th

You'll be  
ON TOP OF THE WORLD  
in our EVENING SANDALS

Comfortably open faced, yet provocatively  
bare-toed... our white satin ankle-  
strap sandal, studded at the toe.

9.95

Jacobson's

EAST LANSING

SPECIAL SALE  
—La France Nylon Crepe Slips

It's been a long, long time since  
you've seen savings like these!  
Beautiful slips right from our reg-  
ular stock selling at a fraction  
of their original price. Two styles,  
iced with nylon net and val lace.  
White or black.

originally 5.95

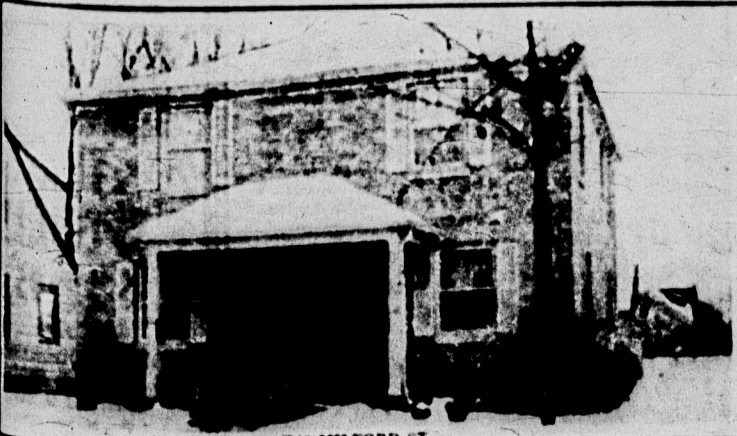
now 2.99

Jacobson's

EAST LANSING



# EAST LANSING . INCOME



142 MILFORD ST.

BRICK EXTERIOR  
COPPER PLUMBING  
CHOICE CORNER LOCATION  
2 CAR GARAGE  
STORM WINDOWS & SCREENS  
REASONABLE TERMS

PRICED CONSIDERABLY BELOW REPLACEMENT COST

Hicks Brothers Real Estate

PHONE 43011

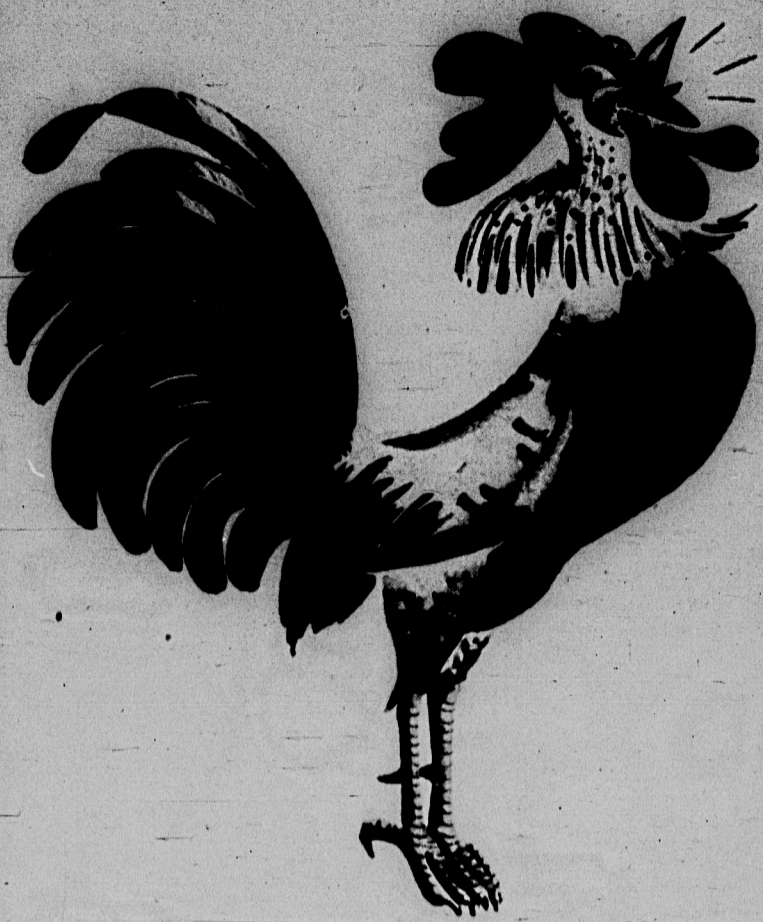
EVENINGS 82405

Lucon  
WARNER BROS. PRESENT  
DORIS DAY • GORDON MCMILLAN • VIRGINIA MAYO  
GENE NELSON • RUTH ROMAN  
and all these  
Great Stars!  
JAMES CAGNEY  
GARY COOPER  
VIRGINIA GIBSON • PHIL HARRIS  
FRANK LOVEJOY • LUCILLE NORMAN  
LOUELLA PARSONS • RANDOLPH SCOTT • JANE WYMAN • PATRICIA WYMORE  
JANE RILEY • JACK WILSON • BOB MERRICK • ROY DEL RUTH  
• STARTING SUNDAY •  
THEY TANGLE IN TANGIER!

Paramount presents  
BOB HOPE  
and MARY LAMARR  
MY FAVORITE SPY

CARTOON NOVELTY NEWS  
SULLIVAN MOSS ARCHER

Screenplay by NORMAN KRASNA and JACK JARVIS  
Directed by NORMAN KRASNA



## "Something to Crow About"

As Al Smith used to say:  
"Let's look at the record..."

What's your box score on advertising results?

Are your promotions, publicly proclaimed, going over big?  
Or is there something anemic somewhere in your advertising set-up?

Are you writing new records in sales making with your advertising linage, or are things just "getting by"?

Why not let 16,000 better-buyers reached by the Michigan State News give you a lift? Move your copy into our columns where advertising works 24 hours a day.

Don't be swung out of your orbit by "claims"—even our own... let the cash register the story, the same kind of story that advertising in the Michigan State News does regularly for the 82 advertisers in the Lansing area or the 10 men's clothing store advertisers, who "Follows Suit".

They rely upon the Michigan State News to bring in the business. So can you.

# Michigan State News

### 'Lucky' Wins Steer Contest

"Lucky," the 1,025 pound Shorthorn Farmers' Week grand champion steer was sold for 49 cents a pound at the steer auction in the Livestock Pavilion yesterday.

Ronald Walker of Metamora, the owner of the steer, received \$502.25 from the Michigan Livestock Exchange.

This Week's  
Special

Fudge-Mallow  
SUNDAE  
27c

**MATTHEWS**  
221 ANN STREET  
EAST LANSING

### Architects Award MSC Students for Landscape Plans

Four of eight landscape architecture awards given by the Landscape Architecture Competition were awarded to MSC students. The competition was sponsored by colleges throughout the country having landscape architecture departments.

Students receiving the awards include: Glenn Cline, Saginaw senior; John Davison, Alpena junior; Jere Haslett, Royal Oak senior; and Robert Lambert, Lake Odessa senior.

### Spartacade Sets Petition Deadline

Spartacade petitions must be filed in the Campus Chest office no later than 5 p.m. today, by all groups intending to participate in the event.

All participants must bring their completed petitions, a \$10 deposit, and a sketch and dimensions of their event along with a list of the construction materials that they will need.

Groups which petition the earliest will be given priority in the allotment of space in the field house.

YOUR SHOPPING AT YOUR LANSING  
BUSINESS CENTER THEATERS

**MICHIGAN**  
LAST TIMES TODAY  
ROBERT TAYLOR  
and DENISE DARCEL  
"WESTWARD THE WOMEN"

— Starting Midnight Sat. —  
with Doris Day  
and Danny Thomas  
— IN —  
"I'll See You in My Dreams"

**CAPITOL**  
2-DAYS-2

"Rhubarb"  
with Ray Milland  
and Jan Sterling  
— AND —  
"Silver City"

By Technicolor  
with Edmund O'Brien  
and Yvonne DeCarlo  
Cartoon Show Fri. Night  
6:45 — Sat. Mat. 12:45

**LANSING**

"Journey into Light"

with Sterling Hayden, Viveca Lindfors, and Thomas Mitchell

"Highly Dangerous"

with Dane Clark  
and Margaret Lockwood

**GLADMER**

"Happy Go Lovely"

with David Niven  
and Vera Ellen

News — Cartoon — Short

SOON

"Hong Kong"



**Ray  
Anthony**

FEATURING  
**Music In Action**

Don't Miss  
America's Top Dance Band

at the  
**J-HOP**

TICKETS LEFT

Tickets On Sale At The  
Union Desk



Colorful drapery, comfortable chairs, and plenty of reading matter highlight the waiting room in President Hannah's office. The recently completed work is the first done in the President's office since 1928.

### Be Seated, Please!

## President's Waiting Room Redecorated

By PHIL GUNBY

Long neglected in the steady stream of improvements made throughout the past years, President Hannah's waiting room has at last come into its own.

The last time anyone did any major redecorating in the old office was 1928, when furniture was moved in from the old office in the library.

But now through the efforts of Mrs. Helen Calder of the J. L. Hudson Company of Detroit, the waiting room has been redecorated.

Indirect lighting from reflector bowl lamps, new furniture, and new drapes and carpeting help to make it that way. The whole scheme fits in with a large mural by John de Martelly which hangs on the south wall.

The new furniture includes six leather-upholstered chairs and a circular daybed, two end tables, a larger table and a bookcase, and a coffee table.

The walls are covered with drapes of the new fabric and are set off by highly decorative drapes at the windows. A picture of President Eisenhower Robert S. Shaw, adorns the east wall opposite the windows.

Mrs. Calder has been working on the room since October. The President's secretary explained. Preliminary work included measurements, sketches, and color schemes. Members of the MSC Buildings and Utilities crew aided the interior decorator.

It will certainly add to the comfort of those waiting to see Dr. Hannah, his secretary says.

**Becker's Drive In**  
2121 E. Michigan  
HAMBURGERS  
MALTEDS - DINNERS

### Bowls Triplicate

The All-College bowling tourney was the scene of a rare feat recently.

Dick Davies, Pontiac junior, was the ace. What did he do? He bowled a triplicate series—three straight games with the same score—which was 181.

**VanDervoort's**  
YOUR MSC  
SPORTS HEADQUARTERS

Sure, it's true...

Van Dervoort's have

**SPALDING**  
Saddles...

and everything you've heard about these wonderful saddle shoes is true. They lead the field for smartness, for comfort, for wearability. Soft, tapered toes and snappy appearance make them campus favorites everywhere.

• brown and white  
• black and white  
• white buck



Farm Visitors  
visit VanDervoort's  
before leaving campus

\$9.95

### Federation Endorsed By Truman

U.S. of Europe Gets President's

WASHINGTON (AP)—President Truman yesterday endorsed a proposal to set up a United States of Europe.

a major step toward advancement of freedom and maintenance of peace.

The President signed a resolution in a letter to sponsors on record favoring the movement of a European Federation.

The three sponsors are Fulbright, D-Clark, and D-Clark (D-Clark).

Last week Gen. Dwight D. Eisenhower, Supreme Commander in Europe, for a constitutional conference to cope with the problems of greater political and economic unity of Europe.

The general's collection of applause from both Congress and Republicans in Congress Secretary of State Acheson he enthusiastically supported. Acheson said, however, that Europeans themselves would have to work out any economic and political union. The American government is endeavoring to reconcile differences between the two groups.

President Truman's endorsement, a significant Senate-along with the declaration.

"I have your letter about your intention to produce a resolution designating a date for this government and its path for the early years within the framework of the North Atlantic community a political federation in Europe."

"I believe such a move would do much to encourage European friends to move vigorously toward this goal."

**Housing Office To Investigate Male Room**

A rule requiring students under 22 to live in approved houses of a college, according to the University of Michigan, is being investigated by the Housing Office.

Men under 22 who are not living in approved houses will be asked to verify their status with the college's Housing Office.

Three alternative plans for housing is being considered. If the living quarters are approved, they will be approved for parental permission in the residence.

Verification of the plan will be conducted every year by Miss Corbishley.

PATRONIZE  
STATE NEWS ADVERTISING



**TUX SPECIAL!**  
\$39.95

WITH ACCESSORIES  
• SHIRT • TIE  
• HOSE • TIE  
\$45.00

USE OUR CONVENIENT  
LAYAWAY PLAN  
Len Kestel  
VARSITY SHOP





# Cagers Seek Best Year Since 1947-48

## Swim, Mat Teams Host Boilermakers Tonight

### Spartans Face Northwestern At Evanston

A victory over the western Wildcats Saturday night at Evanston, Ill., would assure the Michigan basketball team of its successful season since when the Spartans were compiled a record of 12 wins and 10 defeats.

With a 22-game season, a victory tomorrow would mean at least a record for the team even if all of its remaining contests, Pete Newell's squad is 10 of its 14 games.

Michigan State could be most successful basketball team in 17 years. The team continues to play at the clip of .778 for the remainder of the season. However, the Spartans have yet to face the toughest opponents, the cagers will be in the derdoga during most of the future meetings.

After Northwestern, the team faces Ohio State, Wisconsin, Minnesota, Michigan and Indiana. The Spartans have scored wins over the Spartans in the country and a high score for that is still hoped for the Big Ten title, after upsets in two successive years.

Following a bye day, the Spartans will play in the afternoon at Evanston. The Spartans have lost eight.

All three teams have had a series of wins in the last week. The Spartans have won four of their last five games.

At 123 pounds, Bob Gunner of MSC meets Harold Parsons, while at 130 pounds, Dick Gunner faces Al Voss. Ed Casalechio of State returns to the lineup to oppose either Gil Johnson or Joe Murphy at 137 pounds.

Vito Perrone of MSC goes against Capt. Jack Moreno of Purdue at 147 pounds, while Bob Hoke of State risks his unbeaten record against Tom Hankins in the 157-pound weight division.

In the 167-pound division, MSC's Orris Bender is set to face either Jim Mills or Bill Rice, and in the 177-pound class, Lyn Whitaker of Purdue takes on either Dick Thornton or Knotts of the Spartans.

The heavy weight bout pits Larry Fowler against Walter Vieilleu or Joe Suminski of the Boilermakers team.

More John Hoke will probably be assigned to the counter with the forward position. The Spartans have a center and a forward. The Spartans have a center and a forward.

At the grand old time, more John Hoke will probably be assigned to the counter with the forward position. The Spartans have a center and a forward.

### Wrestlers Underdog To Purdue

An upset-minded Michigan State wrestling squad will attempt to hand the Purdue University grapplers their first loss of the season in a dual meet set for Jenison Fieldhouse tonight at 8:30.

Last week, the Spartans were cast in the role of underdog against the defending Big Ten champs from Ohio State, with MSC coming through with a surprising 16-11 decision.

Basis for casting the Boilermakers as favorites is the result of the team's impressive 14-11 win over Iowa State Teachers College, a team which handed the Spartans a 21-8 loss.

The Boilermakers beat the Spartans in their season opener and since then have added a 18-10 win over Cornell College, which annually boasts a powerful team.

Besides their win over Ohio State and a loss to Iowa Teachers, the Spartans hold a 16-11 decision over the University of Pittsburgh.

Tonight's program includes bouts in the eight weight classes plus an exhibition between Ruben Shekarian of State and Bob Alzarin of Purdue, at 115 pounds.

At 123 pounds, Bob Gunner of MSC meets Harold Parsons, while at 130 pounds, Dick Gunner faces Al Voss. Ed Casalechio of State returns to the lineup to oppose either Gil Johnson or Joe Murphy at 137 pounds.

Vito Perrone of MSC goes against Capt. Jack Moreno of Purdue at 147 pounds, while Bob Hoke of State risks his unbeaten record against Tom Hankins in the 157-pound weight division.

In the 167-pound division, MSC's Orris Bender is set to face either Jim Mills or Bill Rice, and in the 177-pound class, Lyn Whitaker of Purdue takes on either Dick Thornton or Knotts of the Spartans.

The heavy weight bout pits Larry Fowler against Walter Vieilleu or Joe Suminski of the Boilermakers team.

More John Hoke will probably be assigned to the counter with the forward position. The Spartans have a center and a forward.

At the grand old time, more John Hoke will probably be assigned to the counter with the forward position. The Spartans have a center and a forward.

Michigan State Relays take place Saturday, Feb. 16, in Jenison Fieldhouse.

Unusual interest already is attendant on the perennial indoor classic, and a record entry list of perhaps 400 to 500 athletes is not at all unlikely. The major reason of course is the magnified importance of track and field competition in an Olympic year.

Another is the shift of the Relays to a date two full weeks later than usual. This removes it from the "between semesters" period in which athletes often were tied up in exams or out of training temporarily and hence had to miss the Relays.

Invitations and entry blanks have been sent out by Karl Schladerman, Spartan track coach and meet director, to approximately 160 track coaches in colleges and universities throughout the Midwest and some in the Southeast, South and East. Only the Far West normally has no entries in the Relays.

Full teams are expected from most of the Big Ten schools. Notre Dame, Michigan Normal, Wayne and others. Smaller delegations are anticipated from a score or more schools.

The program will consist of the usual 16 events, with preliminaries in the afternoon and the finals at night. The only change because of the approaching Olympics is to substitute a race over 36-inch hurdles instead of the usual 30-inch low.

Full teams are expected from most of the Big Ten schools. Notre Dame, Michigan Normal, Wayne and others. Smaller delegations are anticipated from a score or more schools.

The program will consist of the usual 16 events, with preliminaries in the afternoon and the finals at night. The only change because of the approaching Olympics is to substitute a race over 36-inch hurdles instead of the usual 30-inch low.

Invitations and entry blanks have been sent out by Karl Schladerman, Spartan track coach and meet director, to approximately 160 track coaches in colleges and universities throughout the Midwest and some in the Southeast, South and East. Only the Far West normally has no entries in the Relays.

Full teams are expected from most of the Big Ten schools. Notre Dame, Michigan Normal, Wayne and others. Smaller delegations are anticipated from a score or more schools.

### Purdue to Test State Strength

When the water clears after the MSC-Purdue swimming meet tonight the answer will be known as to the size stick the Spartans will wield in Big Ten competition.

The Michigan State swimmers, winners of three straight dual meets, face their first test against conference pool power when they meet the Boilermakers at 7:30 in Jenison Pool.

Leading the Purdue tankers is Everett Brooks, who placed in both the 100 and 200 yard backstroke events in last season's Big Ten meet. MSC's Hal Shoup, named All-American in 1950 and '51, will team with either Rod Quigley or Bob Duff in an effort to upset Brooks.

State divers Ken Coyne, Lewie Machat, and Don Morey face Bill Chingenepp, conference low board runner-up, in the fancy diving event.

Another Purdue standout is Bob Gawboy, sophomore individual medley performer. Last year he was fourth in the NAAU meet. Bruce Aldrich, teaming with either Lanny Johnson or Dave Steimle is slated to stroke for the Spartans.

Couch Charles McCaffree stated that Gawboy's opposition in the breaststroke will be picked from Aldrich, Chuck Baldwin, Jim Weltmann, Dick Rober, and Ron Ruskay.

Sprinters Clarke Scholes and Tom Pavette face strong competition from Purdue's Andrew Forrest and Dick Spaid. Dave Norman and Bob Wichtman will go in the 220 and 440 with Bert McLachlan against Boilermaker distance aces Dick Spaid and Bill Lauterback.

Purdue will be test of State's conference potential in more ways than one. After their meet against the Spartans tonight, the Purdue tankers travel to Ann Arbor to tangle with the top rated Michigan swimmers.

Scholes has been picked as acting captain for the meet. Purdue is coached by Dick Papenuth, former Michigan and Olympic athlete.

Michigan State's fencing team will be beginning its third consecutive victory tomorrow afternoon when they clash with Notre Dame at South Bend.

Last year the Irish had a record of eight wins and two losses, including a 13-12 triumph over State. With eight lettermen returning to the squad they should be just as tough this season.

Spartan Coach Charles Schmitt's team won four straight bouts over last week as they defeated Detroit 13-10 and Wayne 13-12, to open their season.

Earl Freibert and Bob Bristol won five straight bouts in the Sabres three against Detroit and two in the Wayne meet and should give the Irish stiff opposition in that division.

Michigan State's fencing team will be beginning its third consecutive victory tomorrow afternoon when they clash with Notre Dame at South Bend.

Last year the Irish had a record of eight wins and two losses, including a 13-12 triumph over State. With eight lettermen returning to the squad they should be just as tough this season.

Spartan Coach Charles Schmitt's team won four straight bouts over last week as they defeated Detroit 13-10 and Wayne 13-12, to open their season.

Earl Freibert and Bob Bristol won five straight bouts in the Sabres three against Detroit and two in the Wayne meet and should give the Irish stiff opposition in that division.

Michigan State's fencing team will be beginning its third consecutive victory tomorrow afternoon when they clash with Notre Dame at South Bend.

Last year the Irish had a record of eight wins and two losses, including a 13-12 triumph over State. With eight lettermen returning to the squad they should be just as tough this season.

Spartan Coach Charles Schmitt's team won four straight bouts over last week as they defeated Detroit 13-10 and Wayne 13-12, to open their season.

Earl Freibert and Bob Bristol won five straight bouts in the Sabres three against Detroit and two in the Wayne meet and should give the Irish stiff opposition in that division.

Michigan State's fencing team will be beginning its third consecutive victory tomorrow afternoon when they clash with Notre Dame at South Bend.

### Phi Deltas Top Phi Taus in Close Game

Phi Delta Theta downed a stubborn Phi Kappa Tau squad in a battle of unbeaten teams in the top game of last night's IM schedule. The final score was 21-17. The winners fought played a big part in downing the aggressive Phi Tau squad. John Bachman did an outstanding rebound job for the Phi Deltas.

The losers' fine guard combination of Johnny Wheeler and Norm Anderson kept the score close. Wheeler contributed six points, besides his fine passing.

Abbot 15, 21; Abbot 14, 16. Abbot 15 continued to run an enviable record in intercollegiate play. They added a third straight basketball win to their record by defeating the Phi Deltas.

The 800-yard dash stacks up as one of the two races of the evening. Notre Dame has a ton runner in John Mohar, while the Spartans have a strong combination in Dick Jarrett, Oakville, Ill., sophomore, and Mickey Walter, Buffalo, N.Y., junior.

Other Notre Dame standouts include Capt. Paul Loring in the mile, Jim Hornington and Joe Springer in the mile, and football star Bob Tunell in the 400 yard.

Pacing State in the sprints are Coach Dick Benson, Dearborn, Mich., and Art Ingram, Flint, Mich. Both grabbed points for MSC in the Big Ten outdoor meet last year.

Spartan pole vaulters include Arnold Smith, Alpena, junior, and Chuck Cokendall, Baldwinsville, while in the shotput, State will rely on Don Schusswohl, Saginaw, sophomore, Chuck Blabell, Cleveland, sophomore, and Bob Martin, Dearborn, senior.

The Spartans' high hurdle entry is made up of four sophomores, including John Corbelli, Buffalo, N.Y., Harlan Benjamin, Milan, Ill., junior, East Chicago, Ind., and Bill Freeman.

Michigan Tech had Saturday night, and skated through a rout of Huskies before scoring a goal single-handedly. It was just another example of the prowess of the Spartans in the sport of hockey.

McCormick has been one of Coach Amo Bessone's most consistent performers all season. A senior, Bill was one of the few remaining veterans to greet Bessone when he started his coaching duties at State last fall.

McCormick has played hockey for the Spartans ever since it was revived two seasons ago. He played under former hockey coach Harold Paulson, during his sophomore and junior years. Last year when the Spartans compiled a 6-11 record Bill was the leading scorer with 21 points. He had 11 goals and 10 assists.

Bill played center up until two weeks ago when he was moved to left wing to make room for some of State's flashy new talent.

He played in the line which also includes White Olson and Hal Passmore. McCormick currently is second in scoring behind Jack Maves with 10 points. He has 10 goals and 10 assists.

McCormick gives up in Hagervick, Ontario, and played center and defensive hockey under the tutelage of the coach of the Ontario Hockey Association. He also played two years of high school hockey in Canada before moving to the States.

McCormick is a physical education major and will graduate at the end of this year. Look to the future he'd like a high school coaching job. Of course he would like to coach hockey, but he will take other sports if he has to.

Whatever he does he will, he has the experience from one of the roughest and fastest sports played.

### Hockey Standings

| MICHIGAN STATE HOCKEY SCORING THROUGH FEB. |      |       |    |    |      |      |
|--|------|-------|----|----|------|------|
| Player                                     | Pos. | Games | G. | A. | Pts. | Pen. |
| Moore, John                                | D    | 10    | 2  | 2  | 4    | 10   |
| Essertail, Hal                             | F    | 10    | 2  | 2  | 4    | 8    |
| McGinnis, Bill                             | C/W  | 10    | 2  | 2  | 4    | 7    |
| King, Gordon                               | D    | 9     | 4  | 4  | 8    | 7    |
| Olson, Weldon                              | C    | 10    | 3  | 4  | 7    | 7    |
| Nash, Horro                                | D    | 10    | 3  | 4  | 6    | 6    |
| Roy, Steve                                 | D    | 8     | 4  | 7  | 8    | 6    |
| Stuhald, John                              | W    | 9     | 3  | 3  | 6    | 5    |
| Hard, Dick                                 | D    | 10    | 1  | 2  | 2    | 5    |
| Thomas, John                               | D    | 8     | 1  | 2  | 2    | 4    |
| Enry, Bob                                  | F    | 7     | 0  | 0  | 0    | 7    |
| Brink, Conrad                              | C    | 10    | 0  | 0  | 0    | 7    |
| Nordberg, Dick                             | F    | 10    | 0  | 0  | 0    | 7    |
| Evans, Gus                                 | W    | 10    | 2  | 4  | 4    | 2    |