

PATRONIZE STATE NEWS ADVERTISERS

CROYDON

100% DACRON

Full Fashioned Knit

\$2.50

- WRINKLE-PROOF
- STRETCH-PROOF
- HAND-WASHABLE

10 Smart Shades
Navy • Royal Blue
Maroon • Garnet
Tobacco • Steel
Gold • Hunter Green
Copper • Black

Small's

211 So. Washington

OUT-and-OUT Values!

OUTercoats

by Campus Tags
OUTstanding Styling!



\$50 up

The outlook for Outercoats is mighty fine—as you'll see in our huge and complete collection of warmth without weight Campus Tags coats. All the newest fabrics and fashions are here in abundance—top of the line, smart, check, and plaid. A generous selection of the all-weather, all-purpose zipper lined models, cut free and easy in the swapper new manner—also raglans with bel collar and through pockets—and all your other favorite styles. Outstanding values, all!

Hats—Revised
Station \$10.00

LANSING AND
EAST LANSING

Hard's

LANSING 25, MICHIGAN

Upset in '51; '52?...

Upset Hopes Held by Hilltoppers

By JACK ROSE

All-powerful Michigan State may be No. 1 in the eyes of the nation, but as far as Marquette University is concerned the Spartans are just another tough opponent.

For that matter, the Hilltoppers have never been awed by overwhelming Spartan power. Last year's game is the prime example of Marquette grit.

Supposedly one of State's weakest opponents, the Hilltoppers came to East Lansing rated only as cannon fodder for the big Spartan gun. As it turned out, State was still trailing late in the third quarter, 14-6, but the Spartans put on another comeback performance to win, 26-14.

Coach Biggie Munn has admitted that the Hilltoppers gave State its toughest battle in 1951, which saw such battles as Ohio State and Indiana thrillers.

Similar circumstances prevail

this year. Marquette will field a squad Saturday that cannot possibly be classified any better than "mediocre." The Hilltoppers have



BERNIE MAZUKA

won three contests while losing four so far this season.

Sporting wins over Boston University, Detroit and Arizona, Marquette has gone down before

Wisconsin, the University of Miami, Holy Cross and Miami of Ohio.

Despite their record, the Hill-



RON DRZEWEICKI

toppers are favored by factors that do not ordinarily appear in the statistics.

The Hilltoppers are well rested after a day off last Saturday, and will be in better physical condition for the Spartans than for any opponent this season. Also, Marquette is still smarting from the narrow 22-21 beating administered by Miami of Ohio two weeks ago. They will definitely be on the rebound against State.

While the Hilltoppers have been building up pressure to release against State, the Spartans are sure to suffer something of a let-down after the emotional and physical exertions of the Notre Dame game.

Another factor that boosts Mar-

quette stock is the excellent scouting coverage against MSC this season. The Hilltoppers are reported to have a bookful of information about the Spartan system.

Spartan injuries will also bolster Marquette's chances of an upset. Besides Dick Panin and Bob Breniff, who are definitely scratched from the lineup, other minor injuries will hamper a few Spartans.

Marquette's biggest stars this season have been left half Ron Drzewiecki, quarterback Jim Cronin, and end Jim Tobias. Drzewiecki is the leading around gainer with 375 yards on 83 tries for a 4.5 yard average. Cronin is a superb passer, and has completed 51 of 95 tosses for 674 yards. Tobias, who caught both touchdowns passes against State last year, has shared 25 aerials for 288 lengths.

Bernie Mazuka, big right tackle, leads a strong defensive line for the Hilltoppers.

Train Chartered By Hilltopper Fans

A special train to East Lansing Saturday has been chartered for Marquette University football fans. Approximately 300 rooters are expected to make the one-day trip. The train will leave Milwaukee at 6 a.m. on game day and will return to Milwaukee at 10:30 p.m.

Troubled by Troubles

Old Man 'Injury' Keeps Benson Out

Football is known as a game of bumps and bruises, a player who has had more than enough of these gridiron gremlins is Spartan fullback, Wayne Benson.

Benson has always been kayoed by Old Man Injury.

He greatly impressed the coaches in spring practice of 1951 and was voted the "most valuable player" of the Green and White intra-squad contest.

He was rated the No. 1 candidate for the fullback slot when fall practice rolled around last season. But the injury jinx changed the situation in a big hurry.

Wayne suffered a knee injury during the latter stages of the Michigan game that kept him out of the next two contests against Ohio State and Marquette.

The Spartan coaching staff inserted Dick Panin as a replacement and Panin quickly caught fire. When Benson returned for the Pitt game he found Panin firmly established as No. 1 fullback.

He still managed to collect 258 yards on 43 carries in '51 for a credible six yard rushing average. Wayne had another good opportunity this season when Panin failed to show as expected, but a sprained ankle against Syracuse stopped him again.

Benson is a master of the spinner play, so necessary for a fullback. Despite injuries, he has gained 155 yards on 28 attempts for a 5.6 average. His one touchdown this year came on a thrilling 13-yard jaunt against Syracuse.

Benson is a master of the spinner play, so necessary for a fullback. Despite injuries, he has gained 155 yards on 28 attempts for a 5.6 average. His one touchdown this year came on a thrilling 13-yard jaunt against Syracuse.

Benson is a master of the spinner play, so necessary for a fullback. Despite injuries, he has gained 155 yards on 28 attempts for a 5.6 average. His one touchdown this year came on a thrilling 13-yard jaunt against Syracuse.

Benson is a master of the spinner play, so necessary for a fullback. Despite injuries, he has gained 155 yards on 28 attempts for a 5.6 average. His one touchdown this year came on a thrilling 13-yard jaunt against Syracuse.

Benson is a master of the spinner play, so necessary for a fullback. Despite injuries, he has gained 155 yards on 28 attempts for a 5.6 average. His one touchdown this year came on a thrilling 13-yard jaunt against Syracuse.

Benson is a master of the spinner play, so necessary for a fullback. Despite injuries, he has gained 155 yards on 28 attempts for a 5.6 average. His one touchdown this year came on a thrilling 13-yard jaunt against Syracuse.

Benson is a master of the spinner play, so necessary for a fullback. Despite injuries, he has gained 155 yards on 28 attempts for a 5.6 average. His one touchdown this year came on a thrilling 13-yard jaunt against Syracuse.

Benson is a master of the spinner play, so necessary for a fullback. Despite injuries, he has gained 155 yards on 28 attempts for a 5.6 average. His one touchdown this year came on a thrilling 13-yard jaunt against Syracuse.

Benson is a master of the spinner play, so necessary for a fullback. Despite injuries, he has gained 155 yards on 28 attempts for a 5.6 average. His one touchdown this year came on a thrilling 13-yard jaunt against Syracuse.

Benson is a master of the spinner play, so necessary for a fullback. Despite injuries, he has gained 155 yards on 28 attempts for a 5.6 average. His one touchdown this year came on a thrilling 13-yard jaunt against Syracuse.

Benson is a master of the spinner play, so necessary for a fullback. Despite injuries, he has gained 155 yards on 28 attempts for a 5.6 average. His one touchdown this year came on a thrilling 13-yard jaunt against Syracuse.

Benson is a master of the spinner play, so necessary for a fullback. Despite injuries, he has gained 155 yards on 28 attempts for a 5.6 average. His one touchdown this year came on a thrilling 13-yard jaunt against Syracuse.

Benson is a master of the spinner play, so necessary for a fullback. Despite injuries, he has gained 155 yards on 28 attempts for a 5.6 average. His one touchdown this year came on a thrilling 13-yard jaunt against Syracuse.

Benson is a master of the spinner play, so necessary for a fullback. Despite injuries, he has gained 155 yards on 28 attempts for a 5.6 average. His one touchdown this year came on a thrilling 13-yard jaunt against Syracuse.

Benson is a master of the spinner play, so necessary for a fullback. Despite injuries, he has gained 155 yards on 28 attempts for a 5.6 average. His one touchdown this year came on a thrilling 13-yard jaunt against Syracuse.

Benson is a master of the spinner play, so necessary for a fullback. Despite injuries, he has gained 155 yards on 28 attempts for a 5.6 average. His one touchdown this year came on a thrilling 13-yard jaunt against Syracuse.

Benson is a master of the spinner play, so necessary for a fullback. Despite injuries, he has gained 155 yards on 28 attempts for a 5.6 average. His one touchdown this year came on a thrilling 13-yard jaunt against Syracuse.

Benson is a master of the spinner play, so necessary for a fullback. Despite injuries, he has gained 155 yards on 28 attempts for a 5.6 average. His one touchdown this year came on a thrilling 13-yard jaunt against Syracuse.

Benson is a master of the spinner play, so necessary for a fullback. Despite injuries, he has gained 155 yards on 28 attempts for a 5.6 average. His one touchdown this year came on a thrilling 13-yard jaunt against Syracuse.

Benson is a master of the spinner play, so necessary for a fullback. Despite injuries, he has gained 155 yards on 28 attempts for a 5.6 average. His one touchdown this year came on a thrilling 13-yard jaunt against Syracuse.

Benson is a master of the spinner play, so necessary for a fullback. Despite injuries, he has gained 155 yards on 28 attempts for a 5.6 average. His one touchdown this year came on a thrilling 13-yard jaunt against Syracuse.

Benson is a master of the spinner play, so necessary for a fullback. Despite injuries, he has gained 155 yards on 28 attempts for a 5.6 average. His one touchdown this year came on a thrilling 13-yard jaunt against Syracuse.

Benson is a master of the spinner play, so necessary for a fullback. Despite injuries, he has gained 155 yards on 28 attempts for a 5.6 average. His one touchdown this year came on a thrilling 13-yard jaunt against Syracuse.

Benson is a master of the spinner play, so necessary for a fullback. Despite injuries, he has gained 155 yards on 28 attempts for a 5.6 average. His one touchdown this year came on a thrilling 13-yard jaunt against Syracuse.

Benson is a master of the spinner play, so necessary for a fullback. Despite injuries, he has gained 155 yards on 28 attempts for a 5.6 average. His one touchdown this year came on a thrilling 13-yard jaunt against Syracuse.

Benson is a master of the spinner play, so necessary for a fullback. Despite injuries, he has gained 155 yards on 28 attempts for a 5.6 average. His one touchdown this year came on a thrilling 13-yard jaunt against Syracuse.

Benson is a master of the spinner play, so necessary for a fullback. Despite injuries, he has gained 155 yards on 28 attempts for a 5.6 average. His one touchdown this year came on a thrilling 13-yard jaunt against Syracuse.

Benson is a master of the spinner play, so necessary for a fullback. Despite injuries, he has gained 155 yards on 28 attempts for a 5.6 average. His one touchdown this year came on a thrilling 13-yard jaunt against Syracuse.

Benson is a master of the spinner play, so necessary for a fullback. Despite injuries, he has gained 155 yards on 28 attempts for a 5.6 average. His one touchdown this year came on a thrilling 13-yard jaunt against Syracuse.

Benson is a master of the spinner play, so necessary for a fullback. Despite injuries, he has gained 155 yards on 28 attempts for a 5.6 average. His one touchdown this year came on a thrilling 13-yard jaunt against Syracuse.

Benson is a master of the spinner play, so necessary for a fullback. Despite injuries, he has gained 155 yards on 28 attempts for a 5.6 average. His one touchdown this year came on a thrilling 13-yard jaunt against Syracuse.

Benson is a master of the spinner play, so necessary for a fullback. Despite injuries, he has gained 155 yards on 28 attempts for a 5.6 average. His one touchdown this year came on a thrilling 13-yard jaunt against Syracuse.

Benson is a master of the spinner play, so necessary for a fullback. Despite injuries, he has gained 155 yards on 28 attempts for a 5.6 average. His one touchdown this year came on a thrilling 13-yard jaunt against Syracuse.

Benson is a master of the spinner play, so necessary for a fullback. Despite injuries, he has gained 155 yards on 28 attempts for a 5.6 average. His one touchdown this year came on a thrilling 13-yard jaunt against Syracuse.

Benson is a master of the spinner play, so necessary for a fullback. Despite injuries, he has gained 155 yards on 28 attempts for a 5.6 average. His one touchdown this year came on a thrilling 13-yard jaunt against Syracuse.

Benson is a master of the spinner play, so necessary for a fullback. Despite injuries, he has gained 155 yards on 28 attempts for a 5.6 average. His one touchdown this year came on a thrilling 13-yard jaunt against Syracuse.

Benson is a master of the spinner play, so necessary for a fullback. Despite injuries, he has gained 155 yards on 28 attempts for a 5.6 average. His one touchdown this year came on a thrilling 13-yard jaunt against Syracuse.

Benson is a master of the spinner play, so necessary for a fullback. Despite injuries, he has gained 155 yards on 28 attempts for a 5.6 average. His one touchdown this year came on a thrilling 13-yard jaunt against Syracuse.

Benson is a master of the spinner play, so necessary for a fullback. Despite injuries, he has gained 155 yards on 28 attempts for a 5.6 average. His one touchdown this year came on a thrilling 13-yard jaunt against Syracuse.

MICHIGAN

SCUOP
Tonight at 9:00 o'clock
"SNEAK PREVIEW"
of one of 1952's Outstanding
Hollywood Productions

Plus Our Regular
Attraction

"The Prisoner
of Zenda"

Stewart Granger
Deborah Kerr

Gladmer
Today and Tomorrow
In Technicolor

"Where's Charley"

with
Ray Bolger
Allyn McLerie

CAPITOL

Thru Saturday
In Technicolor
"Just For You"

with
Bing Crosby
Jane Wyman

★ 2nd Hit ★

"The Bushwackers"

with John Ireland, Wayne
Morris and Dorothy Malone

LANSING
Thru Friday

"Mutiny"

with Mark Stevens, Angela
Lansbury, Patric Knowles

★ Also ★

"The Green Glove"

with
Glenn Ford
Geraldine Brooks

MORE THAN ANYTHING IN THE WORLD O. HENRY LOVED TO WRITE ABOUT PEOPLE

He wrote of people in love, in trouble, in danger, in despair.

Preposterous
FRED ALLEN
The kidnapper who had to pay ransom!

Inspiring
ANNE BAXTER
Her life hung by the "Last Leaf"!

Beautiful
JEANNE CRAIN
She sold her hair... for love!

Faithful
FARLEY GRANGER
His Christmas would last... forever!

Incredible
CHARLES LAUGHTON
He couldn't even get arrested!

Unconscious
OSCAR LEVANT
The assistant kidnapper!

Eye-catching
MARILYN MONROE
No one ever called her a lady... believe!

Surprising
JEAN PETERS
She saw the miracle beneath her window!

Fabulous
GREGORY RATOFF
He traded his life for the perfect painting!

Homic
DALE ROBERTSON
He trapped a killer... with a song!

Riotous
DAVID WAYNE
He was a failure... even as a hobo!

Ruthless
RICHARD WIDMARK
He'd kill... and laugh!

Directed by
HENRY HATHAWAY
HOWARD HAWKS
HENRY KING
HENRY KOSTER
JEAN NEGULESCO

20th Century Fox Presents
Top Stars of O. Henry's Best Stories
O. Henry's FULL HOUSE

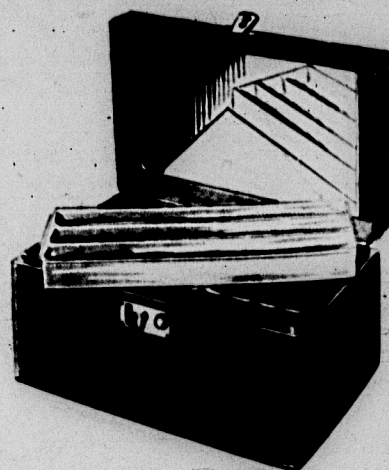
Screen Plays by
RICHARD BREEN
WALTER BULLOCK
IVAN GOFF
BEN ROBERTS
LAMAR TROTTI

MICHIGAN

STARTING
MIDNIGHT SATURDAY

Liebermann

Gift for a Gad-about! TRAIN CASE



Perfect little case for week-ends... or longer trips. Carries all her incidentals in perfect order. Full mirrored lid, plastic tray, washable lining and adjustable loops to keep cosmetic jars secure. Smooth simulated leather covering.

\$7.00

- Red
- Green
- Suntan
- Ivory

GOLD MONOGRAMMED FREE

Liebermann
TRUNK CO.

107 South Washington Ave.
Travelware — Gifts — Handbags

November 20, 1951

Sha

19 Win

ves ATO

o Finals

defending

the finals last

the choice of their

defeated E. Shaw

Shaw appears to

may cause a re

protested when h

that according to the

team should have

the Phillips' "one

instead of a fourth

the referee gave them

who were leading 6-2

held the down

Reeman, director of

als has scheduled a

with representatives of

teams today before he

decision. Reeman is

judge on disputes dur-

all college playoffs

and will result in a

the rules applied," De

the referee's decision

the referee's decision

the referee's decision

the referee's decision

Viewpoint

(Continued from Page 2)

You never have to interrupt your studies to put out the paper and satisfy the complainers. You're never called out of bed at two in the morning to justify something or other.

Yes sir, as we said before, it's really easy to put out a newspaper. Real easy. You bet.

Placement Bureau Interviews

INTERVIEW - SCHEDULE
November 20th through December 2nd
1952

November	Company	Location
20	California Texas Oil Co. L.T.D.	New York, N.Y.
20	U.S. Steel Company	Pittsburgh, Pa.
20-21	Goodyear Tire & Rubber Co. (Aircraft)	Akron, Ohio
21	Chevrolet-Flint	Flint, Michigan
21	Proctor & Gamble	Grand Rapids, Mich.
21	National Cash Register Co.	Dayton, Ohio
24-5-6	The Bell System (7 Divisions)	New York, N.Y.
24-5-6	1. American Telephone-Telegraph Co.	New York, N.Y.
24-5-6	2. Sandia Corporation	Albuquerque, N.M.
24-5-6	3. Western Electric Co. (Field Eng.)	Chicago, Ill.
24-5-6	4. Western Electric Co. (Mfg. Div.)	Chicago, Ill.
24-5-6	5. Bell Telephone Laboratories	New York, N.Y.
24-5-6	6. Michigan Bell Telephone (Women)	Detroit, Mich.
24-5-6	7. Michigan Bell Telephone (Men)	Detroit, Mich.
25	National Tube Company	Loraine, Ohio
25	Consumers Power Co.	Jackson, Mich.
25	Detroit Civil Service Commission	Detroit, Mich.
25	Micro-Switch Div. (Munn-Rones-Freepress)	Ill.
25	West. Reg. Co.	Ill.
25	B.F. Goodrich Company	Akron, Ohio
25	Owens-Corning Fiberglas Corp.	Toledo, Ohio
25	U of M Willow Run Research	Willow Run, Mich.
25-26	Dept. of Defense, Armed Forces	Washington, D.C.
25-26	Sec. Army	
December	Company	Location
1	Hughes Aircraft Company	Fullerton, Calif.
1	Whitcomb Corporation (1900 Corp.)	St. Joseph, Mich.
1	Liberty Mutual Insurance Co.	Detroit, Mich.
1	Borden Company	Detroit, Mich.
1	Sylvania Electric Co.	New York, N.Y.
1-2	General Electric Co.	Pittsfield, Mass.
1	Ansul Chemical Company	Marquette, Wis.
1	S. S. Kresge Company	Detroit, Mich.
1	The (Detroit) Pennsylvania Railroad	Detroit, Mich.
1	Lane Material Company	Milwaukee, Wis.
1	Revere Copper & Brass Co. Inc.	Detroit, Mich.
1	Farbman, Morse & Company	Freeport, Ill.
TEACHER - PLACEMENT INTERVIEWS		
November	Name of Interviewer	Location of School
20	Mr. Loren E. Fyler, Supt.	Arletton, Mich.
20	Mr. Charles Davis, Supt.	Eric, Mich.
21	Mr. Ralph Miller, Supt.	Cape, Mich.
21	Mr. John F. Smith, Supt.	Grand Rapids, Mich.
24	Mr. T. C. Ferguson, Supt.	Weston, Mich.
24	Mr. F. B. Phillips, Supt.	Anna, Mich.
26	Mr. O. E. Spunk, Supt.	Farmington, Mich.

Winter Takes Spotlight

Spartan Band Plans 'Biggest' Program

By MYRA MACPHERSON

MSC's marching band will present one of its most colorful half time programs this Saturday, according to Leonard Falcone, Band Director. A "Winter Wonderland" theme will be depicted through various formations during half time of the MSC-Marquette game.

"This comparatively new idea was worked out by the band this week," said Falcone. "We have had Thanksgiving and Christmas themes before but never a winter theme."

A giant snowman will be formed while the band plays "Winter Wonderland" and "Frosty the Snowman". Next, the 120 piece band will shift into an ice skate. The skate will execute a waltz to the "Skater's Waltz". "Jingle Bells" will be played by the band as they form a sleigh which will move down the field.

An injured skier will be portrayed in a comedy skit. The skier will fall while running down the ski jump formed by the band. "Chopin's Funeral March" will be played as he is carried off the field on a stretcher.

A Christmas theme will be carried out through the formation of a Christmas tree. Members of the band will decorate the tree as "Deck the Halls" and "White Christmas" are played.

To round out half time activities Marquette University will be

saluted by the band as they play "Ring Out Your Hofs" and "MSC Shadows" and "Fight Song" honoring Michigan State College will conclude the ceremonies.

Freshmen Meet With Educators

More than 2,000 MSC freshmen met with officials from their former high schools and junior colleges yesterday morning during the 16th annual Principal-Freshman and Junior College Convoy in the Auditorium.

President Hannah spoke to the educators at a luncheon in the Union.

About 175 guests from Michigan, Indiana and Illinois were present representing an estimated 200 high schools, 10 junior colleges and five Michigan colleges.

Evaporation is so intense from the surface of the Dead Sea that half-formed blue-white clouds are seen near its surface.

for HEAD-TURNING Beauty

Next Time Try "FORMULA 42"

LEMONIZED SHAMPOO AND RINSE

Excellent for bringing out the highlights of all shades of hair. Especially adapted for East Lansing's hard water.

15 oz. Size ... \$1.00

campus drug

"Across From Herkes"



College Gets \$10,000 Check For Program

A \$10,000 check for continuing a driver education program at MSC which reaches both adults and high school students was given to the college Monday afternoon by the Michigan Inter-industry Highway Safety Committee.

James Mason, committee chairman, presented the check to Pres. John A. Hannah at a luncheon in Kellogg Center.

Prof. Leslie R. Silvernale of the Continuing Education Service explained that the program aims at reaching more than 350 high schools which offer driving courses. Workshop and educational conferences are held on campus to study driver education problems.

Silvernale said that a credit course designed to train students of education, high school teachers of driving, and other adults has been established on campus. Future plans include the use of television in teaching driver training.

The work is part of the College's development of an over-all safety education program, features of which are the truck driver and school bus driver training courses which have been operated at Kellogg Center for Continuing Education for a year.

Wolverine Picture Schedule

THURSDAY, NOV. 20

6:45 Am. Foundrymen's Society
7:00 American Soc. of Civil Eng.
7:20 Phi Lambda Tau
7:40 Sno Caps
8:00 Alpha Kappa Psi
8:20 Jr. Hotelmen of America
8:40 Wolverine-Ed. and Bus.
9:20 Campus Chest

Club to Show Film on Skiing In Rockies

"High Powder," a color and sound film on skiing in the Canadian Rockies, will be shown tonight at the Ski Club meeting at 7 in Room 33 of the Union.

Five areas around Banff, a ski resort, will be featured on the film.

Several more colleges in the state have asked to join the Michigan Intercollegiate Ski Association of which the MSC club is one of five original members.

The association is seeking to expand the ski conference to include more Midwest states.

CLEAN UP

Louis Laundry & Dry Cleaning

Across from the Home Mgt. Bldg.
623 E. Grand River
Phone 8-1081

Nothing could be more fitting than our Richelieu

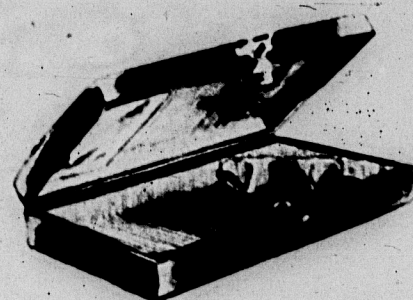
PEARL-COLLARS

Fine alabaster base pearls that fit you because they are made in measured collar sizes, from 11½ to 16 inches. Non-tarnishable springs concealed within the core of the end pearls hold the necklace in the position desired, for constant comfort—correct and attractive wear. Styled with either uniform or graduated pearls.

Single Row 2.50 Double Row \$5 Triple Row 7.50

Jacobson's

EAST LANSING

OPEN EVERY THURSDAY EVENING UNTIL NINE
STORE HOURS — 12 NOON TO 9 P.M.

The Clutch Handbag

in a choice of many fabrics and leathers

Distinctively packaged in its own crystal-clear gift box, here is one handbag a woman of any age wants by two's and three's. There is a selection of calf, velvet, faille, or metallic gold brocade.

7.95 plus tax

Jacobson's

EAST LANSING

SEARS ROEBUCK AND CO.

4-STAR FEATURE

TESTED FOR QUALITY AND SAVINGS—LABORATORY APPROVED—SOLD ONLY BY SEARS

For Extra Cooking Space in the **KITCHEN** or **BASEMENT**—Your Best Buy is a "range engineered"

KENMORE Electric HOT PLATE

2895

Also Sold on Sears Easy Payment Plan

A SEARS 4-STAR FEATURE

If you're a busy cook and the range you now use doesn't have enough cooking space, you need the new Kenmore hot plate. Or if you prefer to do your canning and party cooking in the basement, there, too, the Kenmore will give you the kind of range cooking you know and want. It's "range-engineered" for real cooking efficiency and cooks up to 30% faster than other plates. Fully enclosed body has steel bottom, 4 heat-resistant plastic feet, 2 burners, 6 heats. A buy at Sears!

better because

IT COOKS LIKE A RANGE! Elements are constructed to give uniform heat distribution at any setting. Enclosed rotary switches clearly marked.

IT'S STYLED LIKE A RANGE! Handsome flush-mounted top and bottom with slanted recessed control panel give this hot plate quality range appearance.

RANGE TYPE ELEMENTS COOK 30% FASTER! Genuine Teflon and K-Teflon elements are the same type used on big electric ranges, last longer, easier to clean.

Satisfaction Guaranteed

SEARS

Store Hours—9:00 to 5:30 P.M.
Monday—12 Noon to 9:00 P.M.
300 E. Michigan Phone 97521

SHORTLY UNTIL CH

IL NO. 101

and Lt. Cecilia Corcoran discusses military career. Cynthia Warren, Rochelle Perlmutter, Forest Thompson, Frankfur

st Chance' The Career C

There is the poster in campus life. It's a poster that reaches its peak at 9:00 p.m. and will be closed.

The company agents printed information on the 90th anniversary of the company. The company is expected to be a success. The company is expected to be a success. The company is expected to be a success.

number 50 new business. The number of business is expected to be a success. The company is expected to be a success. The company is expected to be a success.

our Faculty members. The company is expected to be a success. The company is expected to be a success. The company is expected to be a success.

our Faculty members. The company is expected to be a success. The company is expected to be a success. The company is expected to be a success.

our Faculty members. The company is expected to be a success. The company is expected to be a success. The company is expected to be a success.

our Faculty members. The company is expected to be a success. The company is expected to be a success. The company is expected to be a success.

our Faculty members. The company is expected to be a success. The company is expected to be a success. The company is expected to be a success.

our Faculty members. The company is expected to be a success. The company is expected to be a success. The company is expected to be a success.

our Faculty members. The company is expected to be a success. The company is expected to be a success. The company is expected to be a success.

our Faculty members. The company is expected to be a success. The company is expected to be a success. The company is expected to be a success.

our Faculty members. The company is expected to be a success. The company is expected to be a success. The company is expected to be a success.