

WEATHER:
WARMER BUT
DON'T PLAN ON IT

Hannah's Appointment Given Okay

Congress Disputes Proposals

Approval
Ends Month
Of Waiting

Pres. John A. Hannah's appointment as assistant secretary of defense for manpower and personnel was unanimously approved Wednesday by the Senate Armed Services Committee.

His approval accompanied that of three other defense department officials.

Dr. Hannah told senators Wednesday in Washington the present policy of draft deferment of college students will be reviewed according to the Associated Press.

"It was a relief," he said, "that there is so much validity in the statement that the son of a well-to-do family goes to college and the son of the less well-to-do goes to Korea."

He told the Senate Armed Services Committee that a heavy responsibility of his new job as assistant secretary of defense will be to "work out a reasonably stable manpower policy so that young people and their families can plan for the future."

Hannah also testified that it is plan that in perhaps two or two and a half years the bulk of the nation's manpower reserves will be operating on a more or less current basis with men just arrived at military service age.

The approval was given even before the names had been officially submitted to the Senate. The Committee acted after President Eisenhower promised in a letter to send the names to the Senate later in the day.

Other appointments approved included Charles S. Thomas of California, head of a retail clothing store chain, undersecretary of the Navy; Earl Dallas Johnson of Connecticut, now an assistant secretary of the Army; and Frank C. Nash of Washington, assistant secretary of defense coordinating all foreign aid and international programs.

Nash and Johnson served under the Truman administration. All were promised they would sell any stocks or financial holdings they believed might involve conflicts with their official positions.

Hannah succeeds Alma M. Rosenburg.

The appointment approval followed a month-long controversy over the Defense Department positions. The snag came when it was discovered that Charles E. Wilson might not be eligible to hold the office of secretary of defense because of his large stock holding in General Motors.

After much discussion in Washington about what Wilson should do, he sold his stock and was approved for the position.

Hannah was given a send-off in the student body of Michigan State Jan. 22 and left for Washington Monday. He plans to spend a weekend in campus for a weekend and Friday night and to return to his home in Maryland Saturday.

Constitution
Changes Hit
By BoloBy MARGARET FULLER
State News Associate Editor

Student Congress wrangled for two hours Wednesday night over four proposed constitutional amendments.

Two of the amendments would change the method for electing the student government president. A third would provide for two student Congress elections, one spring term and the second during winter term. The other amendment would change the process for amending the student government constitution.

Bob Bolo, student government president, introduced and then withdrew his backing from the amendment which would require Congress to nominate two candidates to face an all-college election for the presidency.

A counter proposal introduced by Rep. Don Huse (fraternities) and Rep. George Weeks (East Lansing) would open the presidency to all juniors who would be selected by an all-college primary and an all-college election.

Rep. Mary Jo McGuire (North Lansing) made an attempt to force Congress to vote on the two amendments Wednesday night but the session was adjourned before a vote was taken. Miss McGuire had asked that a roll call vote be taken and then stricken from the record.

In retracting his backing of the amendment to hold an all-college election of two presidential candidates nominated by Congress Bolo said:

"I thought one segment of opinion should be brought up. Bolo said. I knew the other one would be brought up."

"We have had enough interest proposed around the government so that we have had certain class members and honoraries that consider themselves representative of the students come up to propose the amendment of the government."

The amendment proposes a decision of the student government president by an all-college election introduced by Huse, was backed by a 12-member Student Government Improvement Committee. Headed by Dick Meyer, East Lansing senior, the committee drew up the amendment.

Huse's amendment would permit all juniors to petition for the student government presidency. In an all-college primary in April the student body would select two candidates for the presidency who would face a final all-college election in May.

The losing candidate automatically would become a voting member of the Senate.

See CONGRESS, Page 5

Won't Last
Ground Hog
Brings Good
Weather?

Maybe the groundhog not seeing his shadow helped. Anyway, Wednesday's sunshine and today's warmer temperatures seem like a forecast of spring. High today will be 43 degrees, eight degrees above Wednesday's peak. Low this morning should be 20 degrees, according to the weather bureau.

Wind velocity today will be 15 miles an hour. Wind should come from the south. Late in the day it will shift to the northwest bringing back winter.

High Honors
Go to Coeds
In Home Ec

Cash awards totaling \$485 and a silver cup were presented to seven coeds at the Home Economics Honor Night Tuesday by Dean Marie Dye.

Winner of the \$300 Borden Award was Phyllis Bailey, Goodrich senior. The money is annually presented to the student with the highest grades in the Home Economics curriculum preceding the senior year.

Mary Braasme, Escanaba sophomore, won the Snyder Cup Award for the best record in scholarship and leadership during her freshman year.

The Campbell Award of \$50 was won by Phyllis Stewart, Hillsdale senior. The award is given to the 4-H Club or rural student in the School of Home Economics who at the close of her junior year has the highest scholastic standing. The fund was raised by members of the Home Economics Extension group of Michigan.

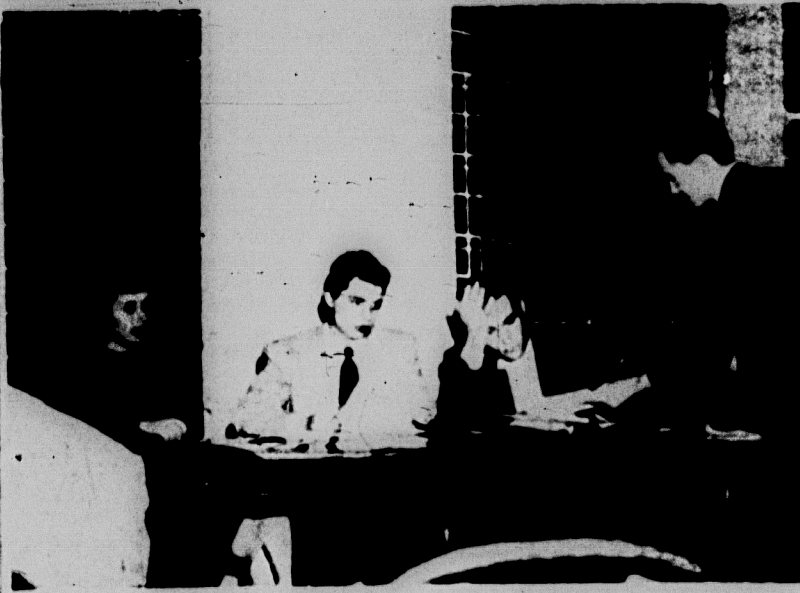
In honor of Mrs. Louise H. Campbell, for 10 years head of the Extension Service in this state.

Mittie Inouye, Detroit senior received the Bayha Award for \$50. The fund was established in memory of Anna E. Bayha, who was member of the Clothing Faculty of the School of Home Ec. The award is made to the Home Economics student, who at the close of her junior year has shown unusual ability in the field of clothing, a high scholastic standing and partially or wholly self-supporting.

The Ellen E. Judson Award of \$50 was presented to Charlene Kier, Beaverton junior. The award is made to the student attaining the highest

Marilyn Kiefer, East Lansing junior received \$20 as the student attaining the highest standing in foods and nutrition at the close of the sophomore year.

As a memorial to Anna E. Bayha, the Zonta Club of Lansing awarded \$25 to that woman in honor of her junior year, at the close of her junior year, has attained the highest standing among women who are earning their own maintenance while in college. The coeds Jackson E. Towne, college librarian.



Don Huse, (right) a representative from fraternities, questions speaker Horatio Lewis on one of the four amendments to the student government constitution introduced Wednesday evening during the heated 2½-hour session. Clerk Walter Vander waits for a decision by the speaker before continuing to read Huse's amendment while Acting Secretary Joyce Blasko looks on.

Same Old Russian Plan

Korean Ceasefire
Asked by Red China

Red China's Premier, Chou, En-Lai Wednesday night urged a ceasefire in Korea and resumption of peace talks on Russia's shop-worn terms.

He warned the U.S. that if it talks: "We are thoroughly prepared to fight the war out to the last."

The proposal, broadcast by Peking radio, carried on its face the same conditions which Russian Foreign Minister Andrei Vishinski made to the U.N. last Nov. 24 when he rejected an Indian compromise plan to end the war.

State Department officials in Washington said Wednesday night the proposal for a communist China's premier to seek fighting in Korea and then settle the conflict by war prisoners was virtually the same plan already rejected by the United Nations General Assembly.

For that reason, officials termed it cold stuff. They said it was unlikely to receive a favorable reception in Western capitals.

In brief it called for an immediate ceasefire and a conference of belligerents and other interested nations later to discuss how to exchange prisoners of war.

The U.S. has insisted on settling the prisoner issue before an armistice.

The Chinese reaction came with unusual speed after President Eisenhower's order freezing Nationalist China to end hostilities with the Red China mainland if it chooses.

Eisenhower, in the State of the Union address to Congress Monday, announced the lifting of the U.S. Seventh Fleet neutrality blockade in Formosa Strait.

Leadership
Clinic Set
For TonightGroup to Discuss
Common Problems

Organization presidents and advisors will study club problems this evening at the first annual Leadership Clinic.

Approximately 100 presidents and advisors from the 160 campus organizations are expected to attend the clinic, starting at 7:30 p.m. in the Union Ballroom, Union College Building.

Michigan State College's new administrative service for clubs will be explained by Paul Rumpke, chief accountant. "Social Helps" will be discussed by George Monaghan, member of the Student Faculty Social Committee.

Jack Weiss, editor of the Union, will explain the new student handbook. Bob Bolo, student government president, will explain the government's work with organizations.

Elfreda Voller, assistant to the dean of students, will welcome the club presidents and advisors. Also scheduled for the program is the news clip club.

One representative from each of the 13 organizational interest areas will serve as hosts and hostesses for the clinic. They will lead group discussions at the end of the program.

Sponsored by the student government, the leadership clinic is designed to encourage coordination and co-operation among the organizations, the student government and the college administration to give information on social, financial and organizational problems of clubs, to encourage leadership and to suggest ways of increasing the number of student taking part.

Gains Experience
Horse-Sitter
Earns His Way
Through MST

MST study that supplemented their studies horse-sitting, but Paul Beach, Saginaw, best year student in veterinary medicine, earns as he gains his way through MST.

Three winter terms marked Beach's second year of work at the large Horse Barn on the national campus of the College of Montana, where he is a student.

Beach, who must be a good horseman, has been working at the barn since his freshman year. He has been working at the barn since his freshman year.

In the past three or four years, Beach has been working at the barn since his freshman year. He has been working at the barn since his freshman year.

Bachelor Degree
Candidates Posted

The list of bachelor degree candidates for the year 1953-54 was posted at the counter of the registrar's office, Room 106, Administration Building.

Students graduating with the bachelor's degree in 1953-54 are required to check their names on the list. Those who do not check their names will be considered as having declined the degree.

NEWS IN BRIEF

The Attacks Price Controls

WASHINGTON (AP)—The Eisenhower administration put the main industrial control agency out of business as a separate unit Wednesday and was reported pushing a series of sweeping orders to decontrol the bulk of government price controls.

Lie Hits UN Subversives

UNITED NATIONS, N.Y. (AP)—Secretary General Trygve Lie served notice Wednesday he will fire any U.N. employee he has "reasonable grounds" for believing is carrying on subversive activities against any of the 60 U.N. member government or is likely to do so in the future.

Dulles Gets Tough with Europe

LONDON (AP)—U.S. Secretary of State Dulles is giving the big Western Europe powers 15 days to show real progress in setting up a unified defense or risk cuts in American military and economic aid, a qualified informant said Wednesday night.

Korean Fighting Slows Down

SEOUL (AP)—Fighting in Korea tapered on the ground and in the air Wednesday as the U.S. Eighth Army prepared to change commanders, possibly before the end of the week.

Term Paper Crowd
Hits MSC Library

By MARY WAIBEL

The hundreds of students crowding the library and half-empty shelves throughout the stacks prove that February is the busiest month of the year at the library.

Students are checking out books at the rate of 1,000 a day, according to Ruth McKinley, circulation manager. Requests for hundreds more which cannot be filled are received daily at the main desk.

Topics ranging from "The Discovery of Penicillin" to "How to Build a Better Airplane" have been chosen. Most popular subjects are crime, adoption, juvenile delinquency and marriage.

Communication Skills classes begin students how to use library facilities are held in the library from 8 to 9 a.m. and from 5 to 6 p.m.

Busiest days for check-outs are Tuesday and Sunday. The library is least crowded from 8 to 10 a.m. on weekdays, including Saturdays.

Freshmen students have been writing investigative term papers for almost 20 years. The library is being planned to handle the "bad" students' winter term, according to Jackson Towne, librarian.

In the new library, books will be shelved in rooms placed according to subject matter. Periodicals and current magazines will all be in one room.

The central system of the press-staircase causes a bottleneck of books waiting to be checked out. The main circulation and departmentalization of the library will eliminate this bottleneck.

At the annual convention held at Kellogg Center recently, the Michigan State Press Association, which is the Michigan Press Association, was visited by Pres. John A. Hannah to discuss the monthly board of directors.

Members of the Board of Agriculture, which is the Michigan State Press Association, were also present. The Michigan State Press Association is a non-profit organization which is the Michigan State Press Association.

The Board of Agriculture, which is the Michigan State Press Association, was visited by Pres. John A. Hannah to discuss the monthly board of directors.

The Board of Agriculture, which is the Michigan State Press Association, was visited by Pres. John A. Hannah to discuss the monthly board of directors.

The Board of Agriculture, which is the Michigan State Press Association, was visited by Pres. John A. Hannah to discuss the monthly board of directors.

The Board of Agriculture, which is the Michigan State Press Association, was visited by Pres. John A. Hannah to discuss the monthly board of directors.

The Board of Agriculture, which is the Michigan State Press Association, was visited by Pres. John A. Hannah to discuss the monthly board of directors.

The Board of Agriculture, which is the Michigan State Press Association, was visited by Pres. John A. Hannah to discuss the monthly board of directors.

The Board of Agriculture, which is the Michigan State Press Association, was visited by Pres. John A. Hannah to discuss the monthly board of directors.

The Board of Agriculture, which is the Michigan State Press Association, was visited by Pres. John A. Hannah to discuss the monthly board of directors.

The Board of Agriculture, which is the Michigan State Press Association, was visited by Pres. John A. Hannah to discuss the monthly board of directors.

The Board of Agriculture, which is the Michigan State Press Association, was visited by Pres. John A. Hannah to discuss the monthly board of directors.

The Board of Agriculture, which is the Michigan State Press Association, was visited by Pres. John A. Hannah to discuss the monthly board of directors.

**HOT
PIZZA**

TODAY
CORN BEEF & CABBAGE
and CHICKEN
Eat All You Want
Some cooling meals with
Family Style
Nights \$1.10 - Even \$1.00
VARIETY RESTAURANT
Private Party Room Avail.
Call Today
100 West of E. Lansing on

MSC Prepares for J-Hop

Post-Dance Parties Fill Weekend

Cords Granted Late Permission

J-Hop festivities will dominate the campus social calendar this weekend.

Cords are dusting off their dancing shoes as they prepare to go to the music of Billy May and his orchestra on Friday night or 8 to 10 Saturday night.

Dances will be semi-formal Friday night and formal on Saturday night.

Local entertainment will be provided by the Quintones and the student band during the weekend. A large team of J-Hop dancers is also on the program.

A special feature for Saturday night will be the presentation of trophies to the winners of the J-Hop contest sponsored by the MSC Council.

The year color pictures will be available at the J-Hop in addition to the regular black and white pictures.

Tickets are sold out for both nights of the J-Hop.

Carous regulations have been passed for the benefit of J-Hop dancers. Cords attending the dance will have 4 a.m. permission on Friday night and 3 a.m. permission on Saturday night, the regular for Women's office said yesterday. Students will be expected to arrive cars on campus between 6 p.m. and 2 a.m. on the night of the J-Hop.

The Counselor for Women's office added that due to the flu epidemic the rule requiring a bed for each guest will be strictly enforced during J-Hop weekend.

J-Hop music will be broadcast over national and local radio on both nights of the dance. Friday night music will be broadcast from 11:30 to 11:55 on the ABC network. Saturday night J-Hop music will be broadcast over CBS from 11:30 to 2 p.m.

WJLW will broadcast the music from 11:30 to 11:55 on Friday and from 9 to 9:30 p.m. on Saturday. The Union Grill will be open at 2:30 Friday night and until 4 Saturday night.

Delta Sigma Pi and Kappa Alpha Theta will serve breakfast during both nights of the dance. Sigma Nu's breakfast will be served after the Friday night dance.

Liberty House plans a formal dinner before and a breakfast after the Saturday J-Hop.

Sigma Kappa, Delta Zeta, Phi Delta Theta, Delta Upsilon, Delta Sigma Epsilon and Alpha Gamma Rho also will have parties after the Saturday night dance.

Other events scheduled for this weekend include record dances sponsored by Shaw Hall Friday and the Union Board Saturday.

Saturday afternoon Delta Sigma Pi will select "The Rose of Delta Sigma Pi" at a tea at 2. The queen will be selected from candidates from women's living units and will reign over the fraternity's Rose Dance on Feb. 17.

Alpha Epsilon Pi will have its final term party at the Ohio and the Saturday.

Ag Honor Banquet To Cite Students for Leadership

Wm. Cumiskey, Harvest queen, will be presented with the Ag Council Key on Feb. 10 at the Ag Honor banquet.

Dr. Harlan, newly appointed head of Agriculture, will be guest speaker at this annual meeting of agriculture students and faculty members.

More than 40 students will receive awards and scholarships for outstanding leadership in various agricultural fields. Highlight of the evening will be the presentation of the Ag Honor Award to the most outstanding student in the School of Agriculture.

Tickets can be obtained from the member of the Ag Council.



BILLY MAY

New Members Selected by Union Board

Union Board has selected new members to fill the vacancies left by last Friday's J-Hop. The new members will be inducted during the last two weeks of February.

Notations will be sent out next week.

The new members of Union Board who are serving this term include: Howard Adams, Jackson junior; William Thorne, Detroit sophomore; Louise Strickland, Michigan junior; Shirley Rose, Farmington sophomore; Robert Pettes, Northville sophomore; Robert Moyer, Grand Rapids sophomore.

Others are Betty Anne, Muskegon sophomore; East Lansing junior; Roger Mox, Atlanta, Ga., junior; Nancy Jakes, Detroit sophomore; William Hays, Grand Haven sophomore; Janet Hays, Grand Haven sophomore; Robert Higgins, Detroit junior; Thomas Drayton, Hastings, Mich., sophomore; William Dames, Detroit junior; and Charles Benoit, Muskegon sophomore.

John's caps, the modern version of the Union Board's first annual all-college variety show. All students interested should register at the Union Board office before Friday.

The show will be presented Feb. 22 at the Union. It will be a show of Union Week activities, which are scheduled to begin Feb. 22.

The winner of the talent show will be invited to participate in the University of Michigan talent show in the spring. A traveling trophy will be presented to the living and sponsoring the winner.

John's caps, the modern version of the Union Board's first annual all-college variety show. All students interested should register at the Union Board office before Friday.

The show will be presented Feb. 22 at the Union. It will be a show of Union Week activities, which are scheduled to begin Feb. 22.

The winner of the talent show will be invited to participate in the University of Michigan talent show in the spring. A traveling trophy will be presented to the living and sponsoring the winner.

John's caps, the modern version of the Union Board's first annual all-college variety show. All students interested should register at the Union Board office before Friday.

The show will be presented Feb. 22 at the Union. It will be a show of Union Week activities, which are scheduled to begin Feb. 22.

The winner of the talent show will be invited to participate in the University of Michigan talent show in the spring. A traveling trophy will be presented to the living and sponsoring the winner.

John's caps, the modern version of the Union Board's first annual all-college variety show. All students interested should register at the Union Board office before Friday.

The show will be presented Feb. 22 at the Union. It will be a show of Union Week activities, which are scheduled to begin Feb. 22.

The winner of the talent show will be invited to participate in the University of Michigan talent show in the spring. A traveling trophy will be presented to the living and sponsoring the winner.

John's caps, the modern version of the Union Board's first annual all-college variety show. All students interested should register at the Union Board office before Friday.

The show will be presented Feb. 22 at the Union. It will be a show of Union Week activities, which are scheduled to begin Feb. 22.

The winner of the talent show will be invited to participate in the University of Michigan talent show in the spring. A traveling trophy will be presented to the living and sponsoring the winner.

Pastels Favored

Formal Fashions Feature Full Skirts

By SUE HENDERSON

With the fashion spotlight focused on dainty formal of pastel net, chiffon or tissue thin taffeta, J-Hop styles will stress individuality this year.

Boffant dresses with full gathered skirts and fitted bodices are still first in the fashion parade. Bows, accordion pleated stiff net or a band of lace trim the bodices.

Half-type necklines and dresses with touches of net and flowers at the neck are replacing strapless dresses in popularity.

Extra details in the form of ruffles, swirls of net caught up in tiers and held with small bunches of flowers, or rhinestones sprinkled over the entire dress are extremely popular.

Semined bodices, wide metallic belts and bustles are all used for distinctive trim.

Materials are emphasized more than ever this year. Silk organza and tulle, net and lace, gold and silver embroidered on net, or brocade and satin are combined to create dresses that stand out on the dance floor.

Cotton lace, metallic fabrics and pleated nylon are very popular, not only for their ease in packing but also for their resistance to wrinkling.

Talented Students Sought for Show

Talent of all kinds is being sought for the Union Board's first annual all-college variety show. All students interested should register at the Union Board office before Friday.

The show will be presented Feb. 22 at the Union. It will be a show of Union Week activities, which are scheduled to begin Feb. 22.

The winner of the talent show will be invited to participate in the University of Michigan talent show in the spring. A traveling trophy will be presented to the living and sponsoring the winner.

John's caps, the modern version of the Union Board's first annual all-college variety show. All students interested should register at the Union Board office before Friday.

The show will be presented Feb. 22 at the Union. It will be a show of Union Week activities, which are scheduled to begin Feb. 22.

The winner of the talent show will be invited to participate in the University of Michigan talent show in the spring. A traveling trophy will be presented to the living and sponsoring the winner.

John's caps, the modern version of the Union Board's first annual all-college variety show. All students interested should register at the Union Board office before Friday.

The show will be presented Feb. 22 at the Union. It will be a show of Union Week activities, which are scheduled to begin Feb. 22.

The winner of the talent show will be invited to participate in the University of Michigan talent show in the spring. A traveling trophy will be presented to the living and sponsoring the winner.

John's caps, the modern version of the Union Board's first annual all-college variety show. All students interested should register at the Union Board office before Friday.

The show will be presented Feb. 22 at the Union. It will be a show of Union Week activities, which are scheduled to begin Feb. 22.

The winner of the talent show will be invited to participate in the University of Michigan talent show in the spring. A traveling trophy will be presented to the living and sponsoring the winner.

John's caps, the modern version of the Union Board's first annual all-college variety show. All students interested should register at the Union Board office before Friday.

The show will be presented Feb. 22 at the Union. It will be a show of Union Week activities, which are scheduled to begin Feb. 22.

The winner of the talent show will be invited to participate in the University of Michigan talent show in the spring. A traveling trophy will be presented to the living and sponsoring the winner.

John's caps, the modern version of the Union Board's first annual all-college variety show. All students interested should register at the Union Board office before Friday.

The show will be presented Feb. 22 at the Union. It will be a show of Union Week activities, which are scheduled to begin Feb. 22.

Ballot Box

Newly elected officers of Alpha Epsilon Pi fraternity are: master, Paul Botts, New York City junior; lieutenant master, Lawrence G. Becker, Chicago junior; scribe, Merritt Kanner, Brooklyn, N.Y. junior; exchequer, Edwin S. Bean, Detroit junior; members at large, Sidney S. Pearlman, Detroit junior, and David Perlmutter, Forest Hills, N.Y. junior; sentinel, Lawrence Cowan, Detroit junior; and corresponding scribe, Donald Superman, Detroit sophomore.

Delta Delta Delta officers are: Sue St. Louis, Benton Harbor sophomore; Sally Clegg, Chicago junior; Marilyn Teller, Oswego sophomore; and Jane Condit, Detroit sophomore.

New officers of Delta Upsilon fraternity are: Jerry Campbell, Ann Arbor sophomore; Dan Elfinger, Grand Rapids senior; Roger Gardner, Lansing freshman; Doug Harper, Lansing freshman; Ken Starick, Flint senior; and John Tackins, Flint senior.

Other officers are: John Clancy, Detroit freshman; Edgar Exelby, Lansing sophomore; Jack Harris, Caro freshman; Donovan Olsen, Flint freshman; Thomas Serpa, Oak Park, Ill. freshman; George Snyder, Battle Creek freshman; Leo Walker, Vassar freshman; and Benson Wheeler, Syracuse, N.Y. freshman.

Social Work Club officers are: president, Charles Malloch, Monticue senior; vice-president, Adeline Hodge, Traverse City senior; secretary, Pam Nickerson, Flemington, N.J. senior; treasurer, Dottie Walker, West Brookfield, Mass. senior.

Initiates of Zeta Tau Alpha are: Barbara Hart Allen, Detroit sophomore; Shirley Amrhein, Belleville junior; Joyce Elmer, Detroit sophomore; Kay House, Reading sophomore; Frances Reed, East Lansing sophomore; Patricia Ryder, East Lansing sophomore; Jane Samson, Buchanan sophomore; and Betty Whaley, Midland sophomore.



LEFT: MARYELLEN DAVIS, Delta Zeta is from Lakewood, Ohio. A junior in medical technology. Bill, her husband leaves for the service in 2 weeks.

RIGHT: BETTY MURPHY, Gamma Phi Beta is from Lincoln Park, Michigan. A junior majoring in art and advertising.

Next Week: Delta Gamma and Delta Delta Delta

THIS WEEK MODELS REPRESENT

Delta Zeta

and

Gamma Phi Beta

in

MADAMOISELLE'S

SPORTLEIGH

COATS

The Coat That Just

LOOKS Expensive

Left: Maryellen wears a flamingo red shortie in a fleece fabric.

\$29.75

Right: Betty models the smartly styled soft beige wrap-around full length coat. The wig sleeves and rolled collar add to the design.

\$45

She Style Shop

LANSING — E. LANSING

Veterinary Students Plan 'Medicine Ball'

A semi-formal dinner dance, Gary Cutler's orchestra will play for the dance, which is sponsored by the veterinary students.

Spartan Christian Fellowship

THE ILLUSION OF CHRISTENDOM

THURS. 7:30 Rm. 33 UNION

WALK ON AIR in Kickerinos ORIGINALS



Pamper yourself in our most cheered casual. You'll love the fit, the fashion of its rich, mellow leather — the feel of its cushion-soft foamy sole, made of famous Du Pont Neoprene Crepe. Come in or order yours now.

LIFE Neoprene Crepe Soles!

Brown Earth or "Smog" in soft calf.

\$8.95

Butternut or Ivory Glue Elk ... Brown Earth Calfskin \$8.95

\$8.95

Shepard's SHOES

Across from MSC Campus 317-319 E. Grand River

Lansing Store 226 S. Washington



Perfect doubles for

FORMAL or CASUAL

Wear

Swirl Shortie Wonderful whirlwind of coat in St. Mary's little lamb of a fabric—cloud fleecy "fuzzy faced" 100% wool To wear smartly over all your wardrobe, to keep clean and fluffy-new with its own brush! White, pink, maize, aqua, ice-blue. Sizes 9-15, and 10-16.

29 95

Wanda Hancock

SMARTWEAR

Abbott Road, East Lansing Ph. 8-7855



EAST LANSING

Sale

To-Day ... in our Dress Department

150 DRESSES TO CLEAR

AMAZING SAVINGS AT THESE THREE DRASTICALLY REDUCED PRICES

5 7 9 Regularly 8⁹⁵ - 10⁹⁵ - 12⁹⁵ - 14⁹⁵ - 17⁹⁵

A WONDERFUL SELECTION OF STYLES FOR STREET AND DAYTIME WEAR. ALSO TYPES FOR LATE DAY AND SPORTS

THIS IS YOUR OPPORTUNITY TO CHOOSE SMART GITTLEMAN DRESSES AT TREMENDOUS SAVINGS.

STYLES SOFT FEMININE TYPES FOR STREET AND AFTERNOON COCKTAIL; AND EVENING RESORT AND CASUAL DRESSES

FABRICS LIGHTWEIGHT WOOLS, CREPES, TAFETAS, JERSEYS, FAILLIES, RAYONS

COLORS LOTS OF NAVY, BLACK, PINK, WINTER WHITES, MIXTURES, BLUES

GITTLEMAN'S

East Lansing

Decision Now Definite

Heart Puts Wesling Out for Good

It is now definite that Dick Wesling has finished his collegiate basketball career.

Dr. Charles F. Holland, head Michigan State College physician, said the first string guard has been ordered to quit the cage game because of a heart condition discovered by x-ray

and electro-cardiograph examination.

The condition was first noticed during an army physical at Ft. Custer about two weeks ago. Coach Pete Newell immediately advised the Milwaukee, Wis., sophomore Wesling was then subjected to a series of exami-

nations which culminated in Holland's announcement.

Curiously enough, it was the first time the condition ever had been noted in many physical examinations taken by Wesling. The ailment has never been definitely identified.



Wesling

ations which culminated in Holland's announcement. Curiously enough, it was the first time the condition ever had been noted in many physical examinations taken by Wesling. The ailment has never been definitely identified.

McCaffree Confident

Unbeaten Tankers To Invade Purdue

Coach Charles McCaffree's unbeaten tankers will attempt to keep an unblemished Big Ten slate Saturday afternoon in Lafayette, Ind., when they battle the Boilermakers of Purdue.

Although McCaffree is confident that his charges will haul down their fourth straight conference victory, he is troubled by the sickness of three top performers.

Diving specialists Ken Coyne and Don Morey are both on the doubtful list for the Purdue meet along with breaststroker Ron Ridgway who has been out for some time.

The Boilermakers have dropped two conference meets by

close decisions this season. Powerful Michigan clipped Purdue, 94-93, while Northwestern edged the Indians, 50-43.

In competition going back to 1930, State has nailed the Boilermakers ten times out of 17 attempts. The Spartans show wins for the last seven years straight and will be out to extend that string.

Purdue has lost one top-notch tanker in Bob Gawby, who was one of the best individual medley performers in the country last year. He dropped out of school this season.

But McCaffree points out that the Boilermakers still have plenty of talent. Dick Talbot, who recently was ineligible, is back to bolster the squad in both distance and sprint events.

Eric Holmquist is the other sprinter for Purdue and has recorded a 53.6 performance in the century.

Fred Bantz is a smooth-swimming backstroker while Tom Kreschell carries the chief Purdue hopes in the breaststroke events. Other stalwart performers are sprinter Bill Lauterbach and breaststroker Chuck Edwards.

McCaffree will counter with such tested veterans as Bert McLachlan, Tom Payette, Chuck Baldwin, Frank Reynolds and John Dadeck.

The Spartans will leave for Lafayette Friday noon and will return to the campus after the meet.

IM Schedule

Thursday, Feb. 5

BASKETBALL

Court 1	Court 2
6:30 FarmHouse vs. Delta Sig	6:30 Phi Delta vs. Phi Kappa Tau
7:25 Theta Chi vs. SAE	7:25 Phi Kappa Sig vs. Delta Chi
8:10 Psi E vs. Sigma Chi	8:10 Theta Xi vs. Alpha Chi
8:55 ATO vs. Delta Upsilon	8:55 Psi Chi vs. Delta Tau
9:30 Phi Kappa Phi vs. Delta Tau	9:30 Delta

Court 1	Court 2
6:30 Phi Delta vs. Phi Kappa Tau	6:30 Phi Kappa Sig vs. Delta Chi
7:25 Theta Chi vs. SAE	7:25 Phi Kappa Sig vs. Delta Chi
8:10 Psi E vs. Sigma Chi	8:10 Theta Xi vs. Alpha Chi
8:55 ATO vs. Delta Upsilon	8:55 Psi Chi vs. Delta Tau
9:30 Phi Kappa Phi vs. Delta Tau	9:30 Delta

Court 1	Court 2
6:30 Phi Delta vs. Phi Kappa Tau	6:30 Phi Kappa Sig vs. Delta Chi
7:25 Theta Chi vs. SAE	7:25 Phi Kappa Sig vs. Delta Chi
8:10 Psi E vs. Sigma Chi	8:10 Theta Xi vs. Alpha Chi
8:55 ATO vs. Delta Upsilon	8:55 Psi Chi vs. Delta Tau
9:30 Phi Kappa Phi vs. Delta Tau	9:30 Delta

Court 1	Court 2
6:30 Phi Delta vs. Phi Kappa Tau	6:30 Phi Kappa Sig vs. Delta Chi
7:25 Theta Chi vs. SAE	7:25 Phi Kappa Sig vs. Delta Chi
8:10 Psi E vs. Sigma Chi	8:10 Theta Xi vs. Alpha Chi
8:55 ATO vs. Delta Upsilon	8:55 Psi Chi vs. Delta Tau
9:30 Phi Kappa Phi vs. Delta Tau	9:30 Delta

Court 1	Court 2
6:30 Phi Delta vs. Phi Kappa Tau	6:30 Phi Kappa Sig vs. Delta Chi
7:25 Theta Chi vs. SAE	7:25 Phi Kappa Sig vs. Delta Chi
8:10 Psi E vs. Sigma Chi	8:10 Theta Xi vs. Alpha Chi
8:55 ATO vs. Delta Upsilon	8:55 Psi Chi vs. Delta Tau
9:30 Phi Kappa Phi vs. Delta Tau	9:30 Delta

Court 1	Court 2
6:30 Phi Delta vs. Phi Kappa Tau	6:30 Phi Kappa Sig vs. Delta Chi
7:25 Theta Chi vs. SAE	7:25 Phi Kappa Sig vs. Delta Chi
8:10 Psi E vs. Sigma Chi	8:10 Theta Xi vs. Alpha Chi
8:55 ATO vs. Delta Upsilon	8:55 Psi Chi vs. Delta Tau
9:30 Phi Kappa Phi vs. Delta Tau	9:30 Delta

Court 1	Court 2
6:30 Phi Delta vs. Phi Kappa Tau	6:30 Phi Kappa Sig vs. Delta Chi
7:25 Theta Chi vs. SAE	7:25 Phi Kappa Sig vs. Delta Chi
8:10 Psi E vs. Sigma Chi	8:10 Theta Xi vs. Alpha Chi
8:55 ATO vs. Delta Upsilon	8:55 Psi Chi vs. Delta Tau
9:30 Phi Kappa Phi vs. Delta Tau	9:30 Delta

Court 1	Court 2
6:30 Phi Delta vs. Phi Kappa Tau	6:30 Phi Kappa Sig vs. Delta Chi
7:25 Theta Chi vs. SAE	7:25 Phi Kappa Sig vs. Delta Chi
8:10 Psi E vs. Sigma Chi	8:10 Theta Xi vs. Alpha Chi
8:55 ATO vs. Delta Upsilon	8:55 Psi Chi vs. Delta Tau
9:30 Phi Kappa Phi vs. Delta Tau	9:30 Delta

Court 1	Court 2
6:30 Phi Delta vs. Phi Kappa Tau	6:30 Phi Kappa Sig vs. Delta Chi
7:25 Theta Chi vs. SAE	7:25 Phi Kappa Sig vs. Delta Chi
8:10 Psi E vs. Sigma Chi	8:10 Theta Xi vs. Alpha Chi
8:55 ATO vs. Delta Upsilon	8:55 Psi Chi vs. Delta Tau
9:30 Phi Kappa Phi vs. Delta Tau	9:30 Delta

Court 1	Court 2
6:30 Phi Delta vs. Phi Kappa Tau	6:30 Phi Kappa Sig vs. Delta Chi
7:25 Theta Chi vs. SAE	7:25 Phi Kappa Sig vs. Delta Chi
8:10 Psi E vs. Sigma Chi	8:10 Theta Xi vs. Alpha Chi
8:55 ATO vs. Delta Upsilon	8:55 Psi Chi vs. Delta Tau
9:30 Phi Kappa Phi vs. Delta Tau	9:30 Delta

Court 1	Court 2
6:30 Phi Delta vs. Phi Kappa Tau	6:30 Phi Kappa Sig vs. Delta Chi
7:25 Theta Chi vs. SAE	7:25 Phi Kappa Sig vs. Delta Chi
8:10 Psi E vs. Sigma Chi	8:10 Theta Xi vs. Alpha Chi
8:55 ATO vs. Delta Upsilon	8:55 Psi Chi vs. Delta Tau
9:30 Phi Kappa Phi vs. Delta Tau	9:30 Delta

Court 1	Court 2
6:30 Phi Delta vs. Phi Kappa Tau	6:30 Phi Kappa Sig vs. Delta Chi
7:25 Theta Chi vs. SAE	7:25 Phi Kappa Sig vs. Delta Chi
8:10 Psi E vs. Sigma Chi	8:10 Theta Xi vs. Alpha Chi
8:55 ATO vs. Delta Upsilon	8:55 Psi Chi vs. Delta Tau
9:30 Phi Kappa Phi vs. Delta Tau	9:30 Delta

Court 1	Court 2
6:30 Phi Delta vs. Phi Kappa Tau	6:30 Phi Kappa Sig vs. Delta Chi
7:25 Theta Chi vs. SAE	7:25 Phi Kappa Sig vs. Delta Chi
8:10 Psi E vs. Sigma Chi	8:10 Theta Xi vs. Alpha Chi
8:55 ATO vs. Delta Upsilon	8:55 Psi Chi vs. Delta Tau
9:30 Phi Kappa Phi vs. Delta Tau	9:30 Delta

Court 1	Court 2
6:30 Phi Delta vs. Phi Kappa Tau	6:30 Phi Kappa Sig vs. Delta Chi
7:25 Theta Chi vs. SAE	7:25 Phi Kappa Sig vs. Delta Chi
8:10 Psi E vs. Sigma Chi	8:10 Theta Xi vs. Alpha Chi
8:55 ATO vs. Delta Upsilon	8:55 Psi Chi vs. Delta Tau
9:30 Phi Kappa Phi vs. Delta Tau	9:30 Delta

Court 1	Court 2
6:30 Phi Delta vs. Phi Kappa Tau	6:30 Phi Kappa Sig vs. Delta Chi
7:25 Theta Chi vs. SAE	7:25 Phi Kappa Sig vs. Delta Chi
8:10 Psi E vs. Sigma Chi	8:10 Theta Xi vs. Alpha Chi
8:55 ATO vs. Delta Upsilon	8:55 Psi Chi vs. Delta Tau
9:30 Phi Kappa Phi vs. Delta Tau	9:30 Delta

Court 1	Court 2
6:30 Phi Delta vs. Phi Kappa Tau	6:30 Phi Kappa Sig vs. Delta Chi
7:25 Theta Chi vs. SAE	7:25 Phi Kappa Sig vs. Delta Chi
8:10 Psi E vs. Sigma Chi	8:10 Theta Xi vs. Alpha Chi
8:55 ATO vs. Delta Upsilon	8:55 Psi Chi vs. Delta Tau
9:30 Phi Kappa Phi vs. Delta Tau	9:30 Delta

Court 1	Court 2
6:30 Phi Delta vs. Phi Kappa Tau	6:30 Phi Kappa Sig vs. Delta Chi
7:25 Theta Chi vs. SAE	7:25 Phi Kappa Sig vs. Delta Chi
8:10 Psi E vs. Sigma Chi	8:10 Theta Xi vs. Alpha Chi
8:55 ATO vs. Delta Upsilon	8:55 Psi Chi vs. Delta Tau
9:30 Phi Kappa Phi vs. Delta Tau	9:30 Delta

Court 1	Court 2
6:30 Phi Delta vs. Phi Kappa Tau	6:30 Phi Kappa Sig vs. Delta Chi
7:25 Theta Chi vs. SAE	7:25 Phi Kappa Sig vs. Delta Chi
8:10 Psi E vs. Sigma Chi	8:10 Theta Xi vs. Alpha Chi
8:55 ATO vs. Delta Upsilon	8:55 Psi Chi vs. Delta Tau
9:30 Phi Kappa Phi vs. Delta Tau	9:30 Delta

Court 1	Court 2
6:30 Phi Delta vs. Phi Kappa Tau	6:30 Phi Kappa Sig vs. Delta Chi
7:25 Theta Chi vs. SAE	7:25 Phi Kappa Sig vs. Delta Chi
8:10 Psi E vs. Sigma Chi	8:10 Theta Xi vs. Alpha Chi
8:55 ATO vs. Delta Upsilon	8:55 Psi Chi vs. Delta Tau
9:30 Phi Kappa Phi vs. Delta Tau	9:30 Delta

Court 1	Court 2
6:30 Phi Delta vs. Phi Kappa Tau	6:30 Phi Kappa Sig vs. Delta Chi
7:25 Theta Chi vs. SAE	7:25 Phi Kappa Sig vs. Delta Chi
8:10 Psi E vs. Sigma Chi	8:10 Theta Xi vs. Alpha Chi
8:55 ATO vs. Delta Upsilon	8:55 Psi Chi vs. Delta Tau
9:30 Phi Kappa Phi vs. Delta Tau	9:30 Delta

Court 1	Court 2
6:30 Phi Delta vs. Phi Kappa Tau	6:30 Phi Kappa Sig vs. Delta Chi
7:25 Theta Chi vs. SAE	7:25 Phi Kappa Sig vs. Delta Chi
8:10 Psi E vs. Sigma Chi	8:10 Theta Xi vs. Alpha Chi
8:55 ATO vs. Delta Upsilon	8:55 Psi Chi vs. Delta Tau
9:30 Phi Kappa Phi vs. Delta Tau	9:30 Delta

Court 1	Court 2
6:30 Phi Delta vs. Phi Kappa Tau	6:30 Phi Kappa Sig vs. Delta Chi
7:25 Theta Chi vs. SAE	7:25 Phi Kappa Sig vs. Delta Chi
8:10 Psi E vs. Sigma Chi	8:10 Theta Xi vs. Alpha Chi
8:55 ATO vs. Delta Upsilon	8:55 Psi Chi vs. Delta Tau
9:30 Phi Kappa Phi vs. Delta Tau	9:30 Delta

Court 1	Court 2
6:30 Phi Delta vs. Phi Kappa Tau	6:30 Phi Kappa Sig vs. Delta Chi
7:25 Theta Chi vs. SAE	7:25 Phi Kappa Sig vs. Delta Chi
8:10 Psi E vs. Sigma Chi	8:10 Theta Xi vs. Alpha Chi
8:55 ATO vs. Delta Upsilon	8:55 Psi Chi vs. Delta Tau
9:30 Phi Kappa Phi vs. Delta Tau	9:30 Delta

Court 1	Court 2
6:30 Phi Delta vs. Phi Kappa Tau	6:30 Phi Kappa Sig vs. Delta Chi
7:25 Theta Chi vs. SAE	7:25 Phi Kappa Sig vs. Delta Chi
8:10 Psi E vs. Sigma Chi	8:10 Theta Xi vs. Alpha Chi
8:55 ATO vs. Delta Upsilon	8:55 Psi Chi vs. Delta Tau
9:30 Phi Kappa Phi vs. Delta Tau	9:30 Delta

Court 1	Court 2
6:30 Phi Delta vs. Phi Kappa Tau	6:30 Phi Kappa Sig vs. Delta Chi
7:25 Theta Chi vs. SAE	7:25 Phi Kappa Sig vs. Delta Chi
8:10 Psi E vs. Sigma Chi	8:10 Theta Xi vs. Alpha Chi
8:55 ATO vs. Delta Upsilon	8:55 Psi Chi vs. Delta Tau
9:30 Phi Kappa Phi vs. Delta Tau	9:30 Delta

Court 1	Court 2
6:30 Phi Delta vs. Phi Kappa Tau	6:30 Phi Kappa Sig vs. Delta Chi
7:25 Theta Chi vs. SAE	7:25 Phi Kappa Sig vs. Delta Chi
8:10 Psi E vs. Sigma Chi	8:10 Theta Xi vs. Alpha Chi
8:55 ATO vs. Delta Upsilon	8:55 Psi Chi vs. Delta Tau
9:30 Phi Kappa Phi vs. Delta Tau	9:30 Delta

Court 1	Court 2
6:30 Phi Delta vs. Phi Kappa Tau	6:30 Phi Kappa Sig vs. Delta Chi
7:25 Theta Chi vs. SAE	7:25 Phi Kappa Sig vs. Delta Chi
8:10 Psi E vs. Sigma Chi	8:10 Theta Xi vs. Alpha Chi
8:55 ATO vs. Delta Upsilon	8:55 Psi Chi vs. Delta Tau
9:30 Phi Kappa Phi vs. Delta Tau	9:30 Delta

Stackhouse Shows Fans Hoosiers Can Help State

By KEITH MILLER

Hoosier basketball has a marked influence on the Spartan squad this season as evidenced by the fact that six players from Indiana appear on the State roster.

Prime member of the sextet is Keith Stackhouse, a junior from Plymouth.

This year the "Murrising Hoosiers" with the Spartans, Stackhouse has led the cagers up the Big Ten ladder with his fine ability.

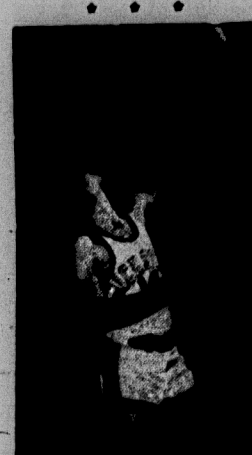
Despite his absence from a few games on last season's schedule, Stackhouse still led the team in four scoring departments: field goals, free throws, total points and average per game.

Keith netted 84 field goals plus 68 charity tosses for 236 points, which gave him an 11.8 average per game.

This year the "Murrising Hoosier" is doing even better as he now possesses a conference average of 13 points. Throughout the first half of the season, Stackhouse has consistently placed in the top 20 scorers in the Big Ten.

From the field Stackhouse has attempted 129 shots scoring on 40 occasions for a 33.3 average. Stackhouse's best game in Coach Pete Newell's opinion was against Minnesota last Saturday when the Hoosier pumped 20 markers through the hoop.

The Golden Gophers seemed

KEITH STACKHOUSE
Hoosier or Spartan?

shot. His second period surge put the Green and White into the lead and his two free shots in the minute of the game insured triumph and a third place berth.

Before entering State, Stackhouse played his prep ball at Bourbon, Ind. His team advanced to the state regionals in his senior year before losing.

Also in his senior season Stackhouse was named to an Indiana high school all-star squad which played a similar group from Kentucky.

Keith scored 26 points in a tussle and subsequently won the "Star of Stars" award for his efforts.

The basketball enthusiasts of Indiana will soon have an opportunity to view the Plymouth hawk in action when the Spartans engage Indiana and North Dame on Feb. 14 and 15.

MSC Relays Tickets Available at Jenison

Student and employee tickets for the Michigan State Relays at Jenison, Mich., will be available at the Jenison ticket office beginning Monday, Feb. 9. Tickets Manager Warren F. Burr announced Wednesday.

All seats are reserved and are obtainable by exchanging coupons from winter term activity books. ID cards will be required of all students at the gate for the event.

6 in the afternoon. Jenison Gym is the scene of the competition.

Contestants throw 25 times at their total may count for individual and team totals. Beeman said Dave Thompson of Sigma Nu is currently leading the team with 23 successful throws.

Beeman also announced the first match in the All-College Handball singles tournament must be completed and reported by 7 p.m. Friday. The handball competition is single-elimination and 15 contestants are signed up.

Entries for singles competition in the All-College Table Tennis tournament close Friday at 5 p.m. Matches will all be played on Feb. 17 and 18 in a single-elimination tourney.

Rounding out the MSC winter program will be the All-College Badminton tournament, which will feature singles competition among 15 contestants. Matches will be run off on Feb. 20 and 21.

Besides the tournaments, Beeman had other things on his mind Wednesday.

He especially stressed the logging interest in competition for the Individual Intramural Championship Award, given to the person who compiles the most points in intramural activities during the year.

"Most students don't even know such an award exists," said Beeman. "All they have to do is let our office know that they are interested and we will keep track of them. Points gained in any intramural activity count toward the award and the winner will receive the customary sweater award."

Beeman said that only a few are now entered for the award and expressed hope that more will enter within a short time.

A new policy has been slated in the Jenison locker room, according to Beeman. Anyone may bring his own lock and use it on a large locker providing he takes it off on leaving. Before, only those who held small lockers could use locks on the large lockers.

Since then, Michigan State has won four straight conference titles. Michigan is one of their four wins against the Big Ten competition.

As the top performer in the Big Ten, Michigan State's Larry Beeman, who won the Big Ten competition, will probably lead the team against the Wolverine.

Beeman said that only a few are now entered for the award and expressed hope that more will enter within a short time.

A new policy has been slated in the Jenison locker room, according to Beeman. Anyone may bring his own lock and use it on a large locker providing he takes it off on leaving. Before, only those who held small lockers could use locks on the large lockers.

Beeman said that only a few are now entered for the award and expressed hope that more will enter within a short time.

A new policy has been slated in the Jenison locker room, according to Beeman. Anyone may bring his own lock and use it on a large locker providing he takes it off on leaving. Before, only those who held small lockers could use locks on the large lockers.

Beeman said that only a few are now entered for the award and expressed hope that more will enter within a short time.

A new policy has been slated in the Jenison locker room, according to Beeman. Anyone may bring his own lock and use it on a large locker providing he takes it off on leaving. Before, only those who held small lockers could use locks on the large lockers.

Beeman said that only a few are now entered for the award and expressed hope that more will enter within a short time.

"FOR SHIRTS THAT SPARKLE"

IT'S

Louis

& Dry Cleaning

Across from Home Mgt.

623 E. Grand River

Phone 81024

CARDY'S JEWELRY

17 Michigan Theater Arcade

Professional Service is Your

Reward for Coming to Cardy's.

Fair dealings are proven by

Being Around 30 Years.

We Represent the Best in Manufacturers'

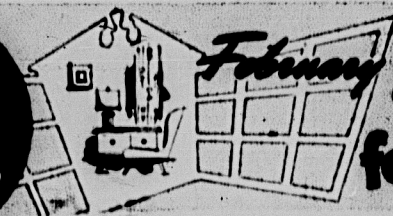
Reid and Barton International Silver, Lunt Silver

CARDY'S JEWELRY MANUFACTURE

Walk Up to Savings

SEARS

ROEBUCK AND CO.



February SALES for HOMES

One of Many Bargains to Save You Money!

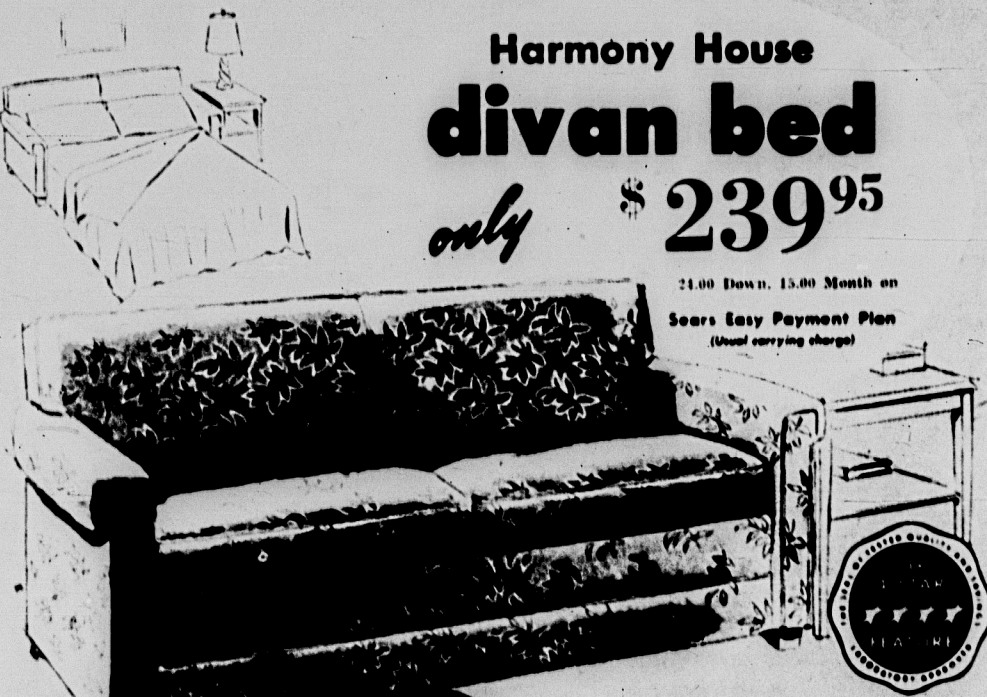
An extra bedroom...a lovely sofa... at an undreamed of low, low price!

Harmony House
divan bed
only \$239⁹⁵

24.00 Down, 15.00 Month on

Sears Easy Payment Plan

(Usual carrying charge)



- Versatile Lawson styling!
- Exclusive Jacquard frieze cover!
- Harmony House go-together colors!

Wise... to buy a sofa that converts into a bed in just a few seconds! Double wise... to buy Sears 4-Star Feature divan-bed, the finest quality we know of at this low, low price! So good looking you wouldn't guess it doubles as a comfortable double-bed! A smart buy when space and funds are at a minimum! Visit Sears first—then buy!

better because

Satisfaction guaranteed

SEARS

Store Hours: 9 A.M. to 5:30 P.M.

Monday: 12 Noon to 9 P.M.

Phone 97521 300 E. Michigan Ave.

Boxers to Battle Nittany Lions Saturday

Meet Penn Staters in Lone Home Event

Michigan State's undefeated boxers square off with Penn State Saturday night in Jenison fieldhouse in what appears to be the toughest meet for the Spartans to date.

The dual meet, the lone home event of the weekend for the Spartans, is slated

to start at 8 p.m.

Coach George Makris' Spartans will carry a record 10-0 straight dual meet wins.

The MSU boxers opened the season with an upset win over

West Point.

Michigan State has had just one

loss, losing to power-

house, 51-24.

But, who has been fight-

ing? The Spartans have been

dropped to the

weight division for the

state meet.

Box will tangle with Sam

Ann, Penn State's Eastern

intercollegiate champion. Ma-

king will surprise headline

the night with his only start this win-

ter.

Michigan State has a draw and a victory

in the 125-pound division.

Michigan State's Eastern

intercollegiate champion, Ma-

king will surprise headline

the night with his only start this win-

ter.

Michigan State has a draw and a victory

in the 125-pound division.

Michigan State's Eastern

intercollegiate champion, Ma-

king will surprise headline

the night with his only start this win-

ter.

Michigan State has a draw and a victory

in the 125-pound division.

Michigan State's Eastern

intercollegiate champion, Ma-

king will surprise headline

the night with his only start this win-

ter.

Michigan State has a draw and a victory

in the 125-pound division.

Michigan State's Eastern

intercollegiate champion, Ma-

king will surprise headline

the night with his only start this win-

ter.

Michigan State has a draw and a victory

in the 125-pound division.

Michigan State's Eastern

intercollegiate champion, Ma-

king will surprise headline

the night with his only start this win-

ter.

Michigan State has a draw and a victory

in the 125-pound division.

Michigan State's Eastern

intercollegiate champion, Ma-

king will surprise headline

the night with his only start this win-

ter.

Michigan State has a draw and a victory

in the 125-pound division.

Michigan State's Eastern

intercollegiate champion, Ma-

king will surprise headline

the night with his only start this win-

ter.

Michigan State has a draw and a victory

in the 125-pound division.

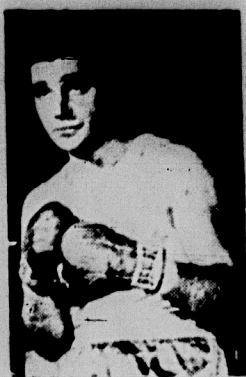
Michigan State's Eastern

intercollegiate champion, Ma-

Undefeated Pugilists



TOM HICKEY



ALEX TSAKRIS

Sidelines Spartan Spirit...?

By STAN KURZMAN
State News Sports Editor

WHAT HAPPENED TO "Spartan Spirit"?

—Just a fleeting glance at student attendance figures during this winter term seems to be just cause for the question.

The most glaring example to the lack of spirit was Mich- igan State's basketball team, which lost its first game to the Spartans.

At Saturday the Spartan swimmers beat Ohio State, the first time an MSU swimming team has beaten the Buckeyes, and the first defeat for the OSU swimmers in 26 dual meets.

And the team's record? ONE HUNDRED AND SEVEN-ENTY-ONE wins for its last meet.

BUT THE BIGGEST hit comes from the basketball at- tendance figures.

The largest student crowd this winter was at Mich- igan State's game with Marquette in the 1952-53 season, a 1,061.

Against Illinois recently, MSU's cagers were fighting for second place in the Western Conference race. The student attendance for the game? 1,181. And that is out of approximately 13,000 students.

Five years ago, Michigan State was playing Kentucky in Jenison fieldhouse. The students turned out in numbers more than 10,000. Compare that with this year's figures.

WHAT ARE THE REASONS?

Are the Spartan fans still the "company"? Are they expecting to see only a winner? That is what the Michigan State officials suggest.

But wait a minute. The swimming team is undefeated. The basketball team is undefeated. The wrestling team is undefeated. And the football team is undefeated. So there is no reason to be disappointed.

But even if we can't find the reasons, more important, what are the answers?

I am baffled on that point. So is the Michigan State athletic ticket office and other Michigan State officials.

If anything can be done to bring the fans back to the sidelines, it is up to the students and their lack of support as a reason. How about that?

Defending Champs In Phillips, Shaw Take IM Victories

By PAUL PETERSON

Precinct 2, defending Phillips champs, scored its first victory of the season Wednesday night by overpowering Phillips 9-15-27.

Even though the score was one-sided, Phillips gave the champs a rugged battle.

Precinct 2 got the ball rolling by scoring first and leading 12-6 at the end of the first period. They continued building their margin throughout the second and third periods.

Shaw Hall's champions West Shaw 6, ran their string of victories to two by defeating West Shaw 8-15-15. The losers gave precinct 6 a battle as they led 10-4 early in the game. But the scoring power of West Shaw 6 was too much for the visitors.

Shaw Hall's champions West Shaw 6, ran their string of victories to two by defeating West Shaw 8-15-15. The losers gave precinct 6 a battle as they led 10-4 early in the game. But the scoring power of West Shaw 6 was too much for the visitors.

Shaw Hall's champions West Shaw 6, ran their string of victories to two by defeating West Shaw 8-15-15. The losers gave precinct 6 a battle as they led 10-4 early in the game. But the scoring power of West Shaw 6 was too much for the visitors.

Shaw Hall's champions West Shaw 6, ran their string of victories to two by defeating West Shaw 8-15-15. The losers gave precinct 6 a battle as they led 10-4 early in the game. But the scoring power of West Shaw 6 was too much for the visitors.

Shaw Hall's champions West Shaw 6, ran their string of victories to two by defeating West Shaw 8-15-15. The losers gave precinct 6 a battle as they led 10-4 early in the game. But the scoring power of West Shaw 6 was too much for the visitors.

Shaw Hall's champions West Shaw 6, ran their string of victories to two by defeating West Shaw 8-15-15. The losers gave precinct 6 a battle as they led 10-4 early in the game. But the scoring power of West Shaw 6 was too much for the visitors.

Shaw Hall's champions West Shaw 6, ran their string of victories to two by defeating West Shaw 8-15-15. The losers gave precinct 6 a battle as they led 10-4 early in the game. But the scoring power of West Shaw 6 was too much for the visitors.

Shaw Hall's champions West Shaw 6, ran their string of victories to two by defeating West Shaw 8-15-15. The losers gave precinct 6 a battle as they led 10-4 early in the game. But the scoring power of West Shaw 6 was too much for the visitors.

Shaw Hall's champions West Shaw 6, ran their string of victories to two by defeating West Shaw 8-15-15. The losers gave precinct 6 a battle as they led 10-4 early in the game. But the scoring power of West Shaw 6 was too much for the visitors.

Shaw Hall's champions West Shaw 6, ran their string of victories to two by defeating West Shaw 8-15-15. The losers gave precinct 6 a battle as they led 10-4 early in the game. But the scoring power of West Shaw 6 was too much for the visitors.

Shaw Hall's champions West Shaw 6, ran their string of victories to two by defeating West Shaw 8-15-15. The losers gave precinct 6 a battle as they led 10-4 early in the game. But the scoring power of West Shaw 6 was too much for the visitors.

Shaw Hall's champions West Shaw 6, ran their string of victories to two by defeating West Shaw 8-15-15. The losers gave precinct 6 a battle as they led 10-4 early in the game. But the scoring power of West Shaw 6 was too much for the visitors.

Shaw Hall's champions West Shaw 6, ran their string of victories to two by defeating West Shaw 8-15-15. The losers gave precinct 6 a battle as they led 10-4 early in the game. But the scoring power of West Shaw 6 was too much for the visitors.

Shaw Hall's champions West Shaw 6, ran their string of victories to two by defeating West Shaw 8-15-15. The losers gave precinct 6 a battle as they led 10-4 early in the game. But the scoring power of West Shaw 6 was too much for the visitors.

Shaw Hall's champions West Shaw 6, ran their string of victories to two by defeating West Shaw 8-15-15. The losers gave precinct 6 a battle as they led 10-4 early in the game. But the scoring power of West Shaw 6 was too much for the visitors.

Shaw Hall's champions West Shaw 6, ran their string of victories to two by defeating West Shaw 8-15-15. The losers gave precinct 6 a battle as they led 10-4 early in the game. But the scoring power of West Shaw 6 was too much for the visitors.

Shaw Hall's champions West Shaw 6, ran their string of victories to two by defeating West Shaw 8-15-15. The losers gave precinct 6 a battle as they led 10-4 early in the game. But the scoring power of West Shaw 6 was too much for the visitors.

Shaw Hall's champions West Shaw 6, ran their string of victories to two by defeating West Shaw 8-15-15. The losers gave precinct 6 a battle as they led 10-4 early in the game. But the scoring power of West Shaw 6 was too much for the visitors.

Shaw Hall's champions West Shaw 6, ran their string of victories to two by defeating West Shaw 8-15-15. The losers gave precinct 6 a battle as they led 10-4 early in the game. But the scoring power of West Shaw 6 was too much for the visitors.

Shaw Hall's champions West Shaw 6, ran their string of victories to two by defeating West Shaw 8-15-15. The losers gave precinct 6 a battle as they led 10-4 early in the game. But the scoring power of West Shaw 6 was too much for the visitors.

Shaw Hall's champions West Shaw 6, ran their string of victories to two by defeating West Shaw 8-15-15. The losers gave precinct 6 a battle as they led 10-4 early in the game. But the scoring power of West Shaw 6 was too much for the visitors.

Shaw Hall's champions West Shaw 6, ran their string of victories to two by defeating West Shaw 8-15-15. The losers gave precinct 6 a battle as they led 10-4 early in the game. But the scoring power of West Shaw 6 was too much for the visitors.

Shaw Hall's champions West Shaw 6, ran their string of victories to two by defeating West Shaw 8-15-15. The losers gave precinct 6 a battle as they led 10-4 early in the game. But the scoring power of West Shaw 6 was too much for the visitors.

Shaw Hall's champions West Shaw 6, ran their string of victories to two by defeating West Shaw 8-15-15. The losers gave precinct 6 a battle as they led 10-4 early in the game. But the scoring power of West Shaw 6 was too much for the visitors.

Shaw Hall's champions West Shaw 6, ran their string of victories to two by defeating West Shaw 8-15-15. The losers gave precinct 6 a battle as they led 10-4 early in the game. But the scoring power of West Shaw 6 was too much for the visitors.

Shaw Hall's champions West Shaw 6, ran their string of victories to two by defeating West Shaw 8-15-15. The losers gave precinct 6 a battle as they led 10-4 early in the game. But the scoring power of West Shaw 6 was too much for the visitors.

Shaw Hall's champions West Shaw 6, ran their string of victories to two by defeating West Shaw 8-15-15. The losers gave precinct 6 a battle as they led 10-4 early in the game. But the scoring power of West Shaw 6 was too much for the visitors.

Shaw Hall's champions West Shaw 6, ran their string of victories to two by defeating West Shaw 8-15-15. The losers gave precinct 6 a battle as they led 10-4 early in the game. But the scoring power of West Shaw 6 was too much for the visitors.

Shaw Hall's champions West Shaw 6, ran their string of victories to two by defeating West Shaw 8-15-15. The losers gave precinct 6 a battle as they led 10-4 early in the game. But the scoring power of West Shaw 6 was too much for the visitors.

Shaw Hall's champions West Shaw 6, ran their string of victories to two by defeating West Shaw 8-15-15. The losers gave precinct 6 a battle as they led 10-4 early in the game. But the scoring power of West Shaw 6 was too much for the visitors.

Shaw Hall's champions West Shaw 6, ran their string of victories to two by defeating West Shaw 8-15-15. The losers gave precinct 6 a battle as they led 10-4 early in the game. But the scoring power of West Shaw 6 was too much for the visitors.

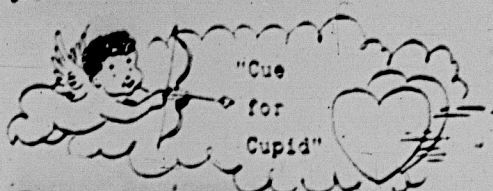
Shaw Hall's champions West Shaw 6, ran their string of victories to two by defeating West Shaw 8-15-15. The losers gave precinct 6 a battle as they led 10-4 early in the game. But the scoring power of West Shaw 6 was too much for the visitors.

Shaw Hall's champions West Shaw 6, ran their string of victories to two by defeating West Shaw 8-15-15. The losers gave precinct 6 a battle as they led 10-4 early in the game. But the scoring power of West Shaw 6 was too much for the visitors.

Charles TKO's Harrison

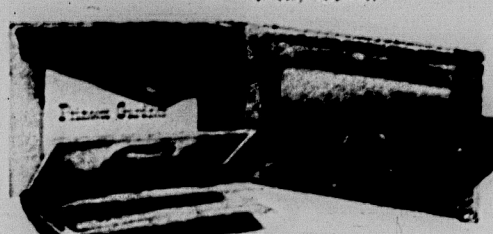
DETROIT (AP)—Kazuo Charles methodically cut down Tommy Harrison at Los Angeles Wednesday night and stopped him in the fifth round to continue his bid for another shot at the heavyweight title. The game Harrison took terrific punishment all the way. He was floored for an eight count in the eighth and was cut about the mouth and left eye when Manager George Parnassus signaled that his fighter was through.

Liebermann



Prince Gardner

prompts you to give me best in battle for lucky Valentine



Princess Gardner Register covered by all women for its detachable photo-card case containing picture of your choice



Gift your man with the famed two-color Register with detachable photo-card case and optional money clip. Hand some Juggle Cowie

Liebermann TRUNK CO.

107 South Washington Ave.

hards



Pictures Taken At The J-Hop

May Be Picked Up At HURD'S E. L. STORE

Friday Pictures — Ready Monday
Saturday " — " Tuesday

GREY FLANNELS
Light and Dark Shades
\$10.75
Famous KENT all wool flannel...
Superbly styled in Hollywood Model...
with double waistband... The New Favorite for Spring
TWO LEGS inc.
PANTS-SWEATERS-JACKETS
112 E. GRAND RIVER, EAST LANSING
112 S. WASHINGTON, LANSING

Typewriter Bargains
Reconditioned Machines
at
\$29.50
Guaranteed For One Year
Easy Terms
Here's a real typewriter bargain for budget-wise Spartans. Fully guaranteed for one year, reconditioned like new machines for only \$29.50. But hurry, only a few left at this low price. Easy Terms.
Wolverine Typewriter Co.
112 E. Kalamazoo Phone 2-4411
Downtown Lansing
Open All Day Saturday and Monday Evenings

CHECKED Sport Shirt
by **Manhattan**
3.95 to 7.95
Fashion scouts who check the colleges this fall will find our checked sport shirts by Manhattan everywhere. Made of completely washable lightweight flannel. They have all the perfection that characterizes the name Manhattan.
Small's
211 So. Washington



New gales and high tide threaten to raise more havoc along the coasts of Britain, Belgium and Holland to create scenes of disaster like the vacation camp in Skegness, Lincolnshire, England. Battering hurricane-force winds and mountainous waves have raised the death toll to 1,269.

'Queens' Compete

Dee Means to Leave For Big Ten Contest

Donna Mae (Dee) Means will leave this afternoon for the Miss Big Ten contest at Northwestern University.

Michigan State College 1952 homecoming queen, Miss Means, will compete with representatives from the other nine Western Conference schools for the title of Miss Big Ten. She will leave the Lansing airport at 5 p.m. for Chicago.

Miss Means, Schenectady, N.Y., senior, will appear on a Chicago television show in the morning before contest judging gets underway Friday. Selection of the winner will be announced at the Northwestern J-Hop Friday.

It is expected that the winner will also be announced Friday at the MSU J-Hop.

Miss Means was chosen by Blue Key, junior and senior men's honoraries, to represent MSU in the competition.

Contest judging will be based on talent as well as beauty. Bob Bolo, student government president, said a trophy for the winner and gifts for all contestants will be presented Saturday.

This is the first time that all Big Ten schools have entered contestants in the contest. According to plans of the Big Ten student government organization, the contest will be held annually on a rotation system.

23 Groups Petition For Spartacade

Twenty-three living groups had petitioned for Spartacade placement by Wednesday evening. The Planning and Organizations Committee expects the number to double by Thursday noon, the petitioning deadline.

Any organized club or honor society is eligible to petition and is urged to enter as soon as possible to be represented at the carnival.

Bergman to Talk On Business Jobs

Job opportunities that exist in business and industry for newly graduated students will be the theme of a talk by W. C. Bergman of Michigan Bell Telephone Company this evening in Room 111 of the Physics-Mathematics Building.

Although he is college employment coordinator for the Michigan Bell System, Bergman will cover the business world in general. Bergman's talk is a part of a continuous English Department program to acquaint students with non-technical job possibilities.

Time Element Bars Age Bill from Ballot

By STAN STEINBOCK
State News Capitol Reporter

Little chance that proposals to lower the voting age in Michigan could be acted on in time to be placed on the ballot by the spring election in April was seen by legislative chairmen.

The three proposals, two in the senate and one in the house, would give the Michigan voters an opportunity to amend Section III of the state constitution to provide that otherwise qualified citizens of Michigan would be able to cast their first ballot at either 18, 19 or 20 years of age.

The Senate Judiciary Committee is considering Senate Joint Resolution A which would lower the age to 18 and Senate Joint Resolution C which would lower it to 20.

Its chairman, Sen. Harry H. H. East (Lansing), said the measures "won't be taken up in time to make the spring election."

He added that he had not studied either of the measures.

Rep. W. Reed Orr (R-Battle Creek) said, "It looks like it will be impossible to conduct the necessary hearings in time to get the measure on the April ballot." Orr is chairman of the House committee which is considering the resolution to lower the voting age to 19.

Under present law the deadline for passing measures to go on the spring ballot is Feb. 13.

In order for an amendment to the Michigan constitution to be placed on the ballot for a referendum vote it must be approved by a two-thirds vote of both houses of the Legislature.

Congress

(Continued from Page 1)
member-at-large of the student Congress.

Under the amendment originally proposed by Bolo Congress would select two candidates from the student government to run for the presidency in an all-college election. The defeated candidate would become a member-at-large of Congress.

This amendment would open the presidency to members of the executive and judicial branches as well as to congressmen. It requires, however, that they serve six months in the student government before they are nominated.

Congress would select nominees by secret ballot. In order to be nominated a candidate would have to receive 35 per cent of the votes of all congressmen.

In supporting this amendment earlier Bolo had said:

"This method is more democratic. It will improve the quality of the student government organization because more people will be involved."

Under the student government constitution the president now is elected by Congress by secret ballot. Candidates must be congressmen.

The amendment to change student Congress elections also introduced by Bolo would have half of Congress selected spring term and the other half elected winter term. In each of the elections half of the representatives of every congressional district would be chosen.

Under the constitution all congressmen now are elected spring term. Vacancies in Congress are filled by election or appointment as they occur.

Bolo's amendment to change the process for adopting amendments is designed to make their approval easier. It provides two methods for proposing constitutional changes.

By a two-thirds vote of Congress amendments could be

the student body could propose proposed.

2. By petitioning 15 per cent of amendments.

Under the present article amendments must be proposed by Congress and by a petition signed by 10 per cent of the student voters.

Bolo's amendment would not change the section requiring that amendments be submitted to the student body at an all-college election.

Speaker Horatio B. Lewis appointed a congressional committee to investigate class government. Named to the committee were Edward Potchen (West Shaw) as chairman, Harry Thierkaut (Abbot) as vice chairman, Kees Hagadorn (Abbot), Bob Steele (Lansing), Larry Hentsch (West Shaw) and Bill Harmon (representative at large).

Also appointed was a committee to audit government books. Serving on it will be Barbara Webster (Mason), Marilyn McBride (East Mayno) and Lowell McElbourn (Snyder).

Two bills introduced during the stormy session were referred to committee. One bill would change the eligibility ordinance to include more campus activities.

The other bill referred to Finance Committee would require classes and the student government to publish financial statements annually.

No action was taken on a resolution which would require that all campus organizations be notified they can petition Congress for funds at any time.

MSU Ceramist Stages One-Man Pottery Show

Irwin Whitaker, ceramist in the MSU Art Department, is staging a one-man show of his work which includes printed ceramics, on the requirements of good pottery production. The show is in the student gallery of the Art Building.

Thailand Prof Thinks MSC's Name Faulty

By ART MIKESILL

Kasem Udyaman, dean of the School of Political Science at Chulalongkorn University, Bangkok, Thailand, conferred with members of the Political Science Department Tuesday.

He is visiting MSU in connection with a possible reorganization of the School of Political Science at Chulalongkorn University.

Dean Udyaman is completing four months of lecturing at Johns Hopkins School of Advanced International Studies and at the New York University School of Government this week. He is in the United States under sponsorship of the Mutual Security Agency Technical Assistance program.

"I have only one suggestion for you," said Dean Udyaman. "Calling your school a college is misleading to those outside of your country. It is really better than many universities I have seen, and deserves to be called a university."

"You have undergone many improvements in the past few years, and MSU has a good academic reputation all over the world. If I were to send any of my students to the United States, I believe I would send them here."

Enrollment at Chulalongkorn University is about 2,500. Because facilities are strictly limited, until students must be weeded out by entrance exam.

"We give scholarships to many of those who otherwise could not afford to go to school, but our enrollment is limited by lack of equipment. We need a good library and better laboratories."

When asked about the Communist situation in Thailand, Udyaman replied: "We have had an anti-Communist law since 1929, because we realized that it was essential. We still recognize Chiang Kai-Shek's government, and do not recognize Communist China."

He also noted that Thailand, unlike most other countries of the Far East, received very little damage during World War II. Thus it is far ahead in recovery, and now has a balanced economy.

Because of this, Dean Udyaman gave little chance for the Communists.

Dean Udyaman has hopes for an exchange program between MSU and Chulalongkorn University.

"I am staying at the Kellogg Center, and I would especially like to compliment the college on what a fine well managed hotel it has," he concluded.

• Just Arrived!

• Fresh for Spring!

Beautiful New

CASHMERE Sweaters

As fresh spirited as the early Spring Jougills . . . As colorful as all the flowers of early Spring! Luxurious new Cashmere . . . the sweater that dreams are made of.

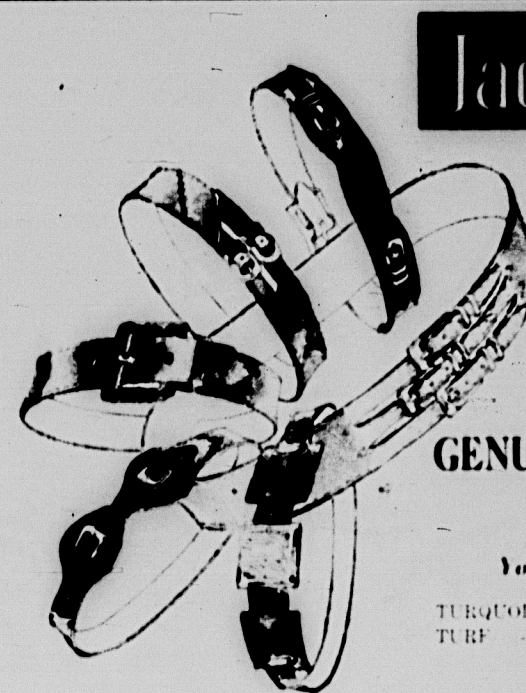
Slipovers 16.95
Cardigans 21.95

Sportswear Shop
downstairs

Greens

228 So. Washington . . . Your Favorite Fashion Center

OPEN EVERY THURSDAY EVENING UNTIL NINE



Jacobson's

East Lansing

Special Purchase

GENUINE COWHIDE BELTS

\$2

You'd Expect To Pay Much More!

TURQUOISE - RED - NAVY - YELLOW
TURF - WHITE - NATURAL - PURPLE
BLUE - GREY

Beautiful first-quality fashion belts . . . true and clear in color and the styles are fashion conversation pieces for your every season wardrobe. Add interesting flavor to your skirts, dresses and sportswear with these new styles.

SPRING WOOL SKIRTS FROM A FAMOUS MAKER



A VERY SPECIAL PURCHASE!

6.99 and 8.99

Regularly
8.95 to 10.95

Regularly
12.95

JUNIOR and MISSES SIZES

Medium-weight checks and tweeds from one of our very best manufacturers . . . each one worth much more than our low special purchase prices . . . trimly tailored and important spring fashion. Grey, brown, gold, blue and other colors. Sizes 9 to 15 and 10 to 16.

Jacobson's

EAST LANSING



J-Hopping?

AFTERWARDS

THE UNION GRILL

Friday 'Til 2:30 A.M.
Saturday 'Til 1:30 A.M.