

Caldwell, assist-
and head of the
national educa-
Department of
and Welfare,
exchange
in a talk, "The
Work."
L. Osgood, wife
MSC School of
was conference



... 'Little Brown Jug' Award to Climax Field Day Events ...



Freshman and sophomore canoers experiment comes up in Saturday's Field Day. It is one of four events planned for the annual contest.



Sitting it out in a tree in order to determine who swims the Red Cedar with the tug-of-war rope are Howard James (left), freshman class president, and Jack Strasser, sophomore president.



Prospective climbers of the greased pole get a good look at the obstacle soon after the pole was grounded in a cement base. It's free-for-all competition between the two classes to see who can reach the flag at the top of the pole first.

Freshman and sophomore classes will battle Saturday for possession of the "little brown jug" trophy during their annual Frosh-Soph Field Day.

The trophy will be awarded on the basis of points received in four competitive events. Presentation will be made to the president of the winning class at the all-college dance in Union Parlors A, B and C Saturday night.

Elimination heats of canoe racers will take place at 10 a.m. with the finals being run at 1:30 p.m. Starting officials for all races will be LeRoy Holden and Don Kauth, co-captains of the

1954 football team. Flagman will be Joe Farhat, Lansing freshman.

Eight couples from each class will participate with two reaching the finals. The race will start and end at the Farm Lane bridge near Shaw. Five points will be given to the winners, three to the second place couple, and two to the racers coming in third.

The grease pole relay will take place at 2:30 p.m. near the golf green next to the Red Cedar. Ten points will be given to the winning class. Rowland Pierson, counselor and Frosh-Soph Council adviser, and Kew Hagadorn, Alma junior, will judge the event.

Twelve freshman and sophomore coeds will compete in the

sack race at 3:15 near Demonstration Hall. Five points will be awarded to the winner, three to the second place runner, and two to the coed taking third place. Sue Ames, Detroit sophomore; Norma Withers, Redford township freshman; and Tamara Van-Huskirk, Ann Arbor sophomore, will judge the relay.

Ten points will be given to the class winning the tug-of-war at 4 p.m. near Williams Dorm.

Ending the day's activities will be the Frosh-Soph dance, "Modern Moods" Saturday night from 9 to 12. Tickets may be purchased at the door, or at the Union desk.

Intermission entertainment will consist of Green Helmet Tappings, presentation of the "little brown jug," a vocal number by Jan Sommers, MSC homecoming queen and Miss Big 10 and a dance routine by Billy Wells, Chicago senior, and Jimmy Ellis, Saginaw senior.

Jeanne Joy, Arlington, Va., sophomore, is chairman of Frosh-Soph Day planning committee. Andy Foelley, Green Bay, Wis., freshman, is head of activities, and Howard James, Elkhart, Ind., freshman, has charge of the dance. Jeanne Warrington, Bethesda, Md., freshman is publicity chairman.

ATTEND
"FINAL FLING"
TONIGHT IN AUD

Michigan State News

MSC DAILY STUDENT PUBLICATION

EAST LANSING, MICHIGAN — FRIDAY, APRIL 30, 1954



PRICE 5 CENTS

Schine Throws Light on Photo

Testimony Blames McCarthy Staff for 'Cutting' Colonel

WASHINGTON (AP)—Pvt. G. David Schine, the millionaire draftee in the McCarthy-Pentagon case, took the witness stand and the TV spotlight Thursday. And, under a protective barrage of shouted objections by his former boss, Sen. McCarthy, Schine testified:

Students To Fete Applegate

Press, Alumni To Attend Dinner

Three hundred friends and former students of A. A. Applegate, retiring head of the journalism department, will honor him at a testimonial dinner in the Kellogg Center Ballroom Saturday night at 6:45.

Applegate is scheduled to begin a year's sabbatical leave on July 1, 1955. He has been head of the journalism department every since its origin.

Phil Spielman, an MSC journalism graduate, will present a scroll listing the newspapers and journalism persons who have contributed to the setting up of a scholarship in Applegate's name.

Miss Buck will present Applegate with a gift. Jack Gillen, Delta Gamma senior and president of Alpha Mu, advertising honorary, will present Applegate with a key.

In addition to developing the college's public relations program, Applegate was instrumental in organizing the Michigan State College Press, which has published books of nationwide importance.

Born in Atlanta, Ill., in 1889, he received his A.B. degree from the University of Illinois in 1914, and his master's degree from the University of Montana in 1923. He is a member of Sigma Delta Chi, Sigma Phi Epsilon and the Amer-

See STUDENTS, page 3

Hearing on WILS

Telecast performances of the McCarthy-Stevens hearing will be continued on WILS-TV until the end of the hearing and not discontinued as reported in the State News Thursday, according to John Pomeroy, WILS official.

ever, were delivered after Schine—who said he gave the original photo to George Anastas of the Investigations subcommittee staff last Thursday—testified he couldn't remember whether Anastas attended a restaurant meeting of the McCarthy staff Monday.

Ray H. Jenkins, special counsel to the subcommittee, demanded a yes or no answer, and McCarthy came up fighting.

He accused Jenkins of "badgering" Schine. He said the questioning was "indecent" and "improper"—"the most improper thing I've ever seen." And he shouted: "Maybe it will serve a purpose—because the American people are watching this spectacle."

See SHINE, Page 6

Cooler Saturday More Clouds, Rain Expected For Weekend

Today's clouds will be accompanied by a high of 62 to 65 degrees and rain, beginning in the late afternoon or evening, according to the weatherman.

Rain is expected to continue Saturday when it will cool off. The low temperature Thursday night was 45.

MSC Joins State Week Observance

A large map showing resources and products of Michigan and other displays in the Union Concourse will be part of Michigan State observance of Michigan Week, Sunday through Saturday.

The Week is a state-wide campaign to make Michiganders more familiar with their state.

Another map showing Michigan universities and colleges will also be set up, according to campus co-chairmen Peg Lowenthal and Nancy Jo Shafer, Fori Huron junior.

Ministers and priests of area churches have announced that they will lead with the Michigan Week theme in sermons and church activities.

Lansing and East Lansing theater owners have agreed to show film and movie shorts depicting unique features of Michigan.

During the week, the state flag will be flown with the national flag at the Union entrance flag-pole.

Plans for future Michigan Week observances call for an exchange of student leaders with other state colleges and universities similar to the exchange of mayors and city managers of the state to be carried out this year.

Philip May, MSC comptroller, and Mayor Max Strothers of East Lansing, are working on a joint committee for coordination between the college and East Lansing for the Week.

Dr. Hill to Speak In Milwaukee

Dr. Guy Hill, coordinator of the High School Cooperation Office, will be the principal speaker at a banquet Saturday in Milwaukee. Hill will speak on "Banking as an Investment in Human Beings" at a meeting of the Milwaukee Chapter of the American Institute of Banking.

Big Grain Elevator in Haslett Destroyed by \$30,000 Fire



Two firemen move in to a closer range as the elevator fire is brought under control, but the building is already a total loss.

Two Trains Stopped By Flames

Marshal Blames Spark From Sheller

A \$30,000 fire that lasted for more than two hours leveled a big grain elevator in Haslett Thursday afternoon. Haslett is located six miles north-east of East Lansing near Lake Lansing.

Two trains were stopped temporarily because of the fire. Railroad tracks running past the elevator are only 20 yards away.

One train, which left Lansing for Toronto and Montreal, was delayed about 55 minutes.

The other train, enroute to Chicago from Seattle, Canada, was held up for about seven minutes.

The elevator was owned by the Haslett Feed and Grain Co.

An employee, Duane Brooks, 22, of Okemos, discovered the fire at 3:15 p.m. after smelling smoke and rushed upstairs to the corn bin.

See TWO TRAINS, page 6

Horse Burlesque MSC Riders To Enter U of D Spring Carnival

MSC's Block and Bridle Club will take part in the University of Detroit's Spring Carnival today and Saturday.

Members will enter the Derby, an inter-collegiate burlesque horse race. There are two divisions, one for saddle horses and one for plow horses. In the plow horse division, the horses are dressed up to look like floats and walked around the track. Judging in this event is based on originality and make-up of the horse.

The saddle horse race is a speed race. Riders are dressed in "sweat shirts" representative of their schools.

The races will be held on Saturday at 11 a.m. at the State Fairgrounds Race Track in Detroit.

Policies Clarified On Dorm Contracts

Foster Says Costs Depend On Keeping a Stable Income

By LOUIS GROPP

Dorm contracts are not made to be broken. This is the opinion of Emory G. Foster, manager of dormitories and food services, who recently clarified policies on the breaking of dorm contracts.

The reason for the contract is so that stability of income may be maintained, he said. The cost is figured on the number of students in the dorm at the beginning of the fall term, he added.

No contracts are broken on the basis of financial reasons, study conditions, or other factors against dorm life, he said.

"If these requests were granted," Foster explained, "it would be a disaster."

See POLICIES, page 6

NEWS IN BRIEF

House Sets Defense Budget

WASHINGTON (AP)—The House Thursday upheld President Eisenhower's request for a flexible world strategy by beating down a proposal to limit the use of American troops in combat zones. Then it voted the armed services a \$28,684,250,486 defense budget for the year ending in mid-1955.

CIO Threatens Phone Strike

NEW YORK (AP)—The CIO Communications Workers of America Thursday threatened a strike at any time against the vast Bell telephone system. The union said it has a two-million-dollar strike fund to call on if needed.

Rhine River Set for Red Attack

FRANKFURT, Germany (AP)—U. S. Army sources said Thursday there are now 39 atomic cannon in West Germany capable of defending a 150-mile Rhine River front against Soviet ground attack.

French Raiders Hit Vietnam

HANOI, Indochina (AP)—French commandos in predawn raids Thursday struck Vietminh positions pressuring Dien Bien Phu's shrunken defenses. The raiders smashed a string of rebel fortifications and killed at least 70 Vietminh before they were driven back into the bastion.

Editorially

This May Be the Year

Is this the year to conquer polio?

First, second, and third grade children in 41 states may provide the answer, after results from tests which began last week on a nation-wide scale are evaluated.

Nearly 500,000 U. S. children will be inoculated with the polio vaccine developed in 1955 by Dr. Jonas E. Salk of the University of Pittsburgh. Another 400,000 will receive a neutral solution to act as a test control.

Monday was designated as "V-Day" for 12 Michigan counties, but those children in only ten will receive the vaccine. Ingham county was forced to withdraw at the last minute after a case of polio was discovered in Haslett.

More remarkable is the withdrawal of Washtenaw county on April 4 because of delays, public confusion, and doubts. On Tuesday, the Wayne county intensive unit refused to let 150 of its wards in St. Clair county foster homes participate in the test.

Participation of eligible children in all ten counties varied from 60 to 70 per cent in Kent county to 25 per cent in Oakland county.

Officials said parents, whose permission must be given before the vaccine is used, are "confused and fearful" about the value and safety of the vaccine.

Paul O'Connor, president of the National Foundation for Infantile Paralysis, said, "The situation is so confused in Michigan that I don't care to comment."

Partial blame for the confusion lies in the "scares-mongering" attributed to New York news commentator Walter Winchell's television broadcast several weeks ago.

In Michigan, parents' fear concerning the vaccine's safety were not allayed by the state medical society, which failed to take clear action on the experiment.

Editorially

Over the Hump

After 70 years, it looks like the dream to expand Lansing hospital service may come true.

Many people have steadily clamored to increase facilities and add to the hospitals of the Greater Lansing area. Spencer St. Lawrence and McLaughlin Orthopedic.

Depression years halted the first attempt for expansion and World War II thwarted the second.

The third move came, a couple of months ago. This time it looks like new rooms, new beds and other new facilities will be installed as a result of the \$4 million Lansing United Hospital Fund drive.

Although MSC has its own student hospital, it is playing a vital role in the drive.

Faculty members and administrators

Editorially

Worthwhile

Parents are important.

For that reason, the annual Parents Day next weekend is a particularly worthwhile event.

This year's agenda includes a Gay 20's Collegiate Party, a coffee hour during which parents will meet faculty and administrative personnel, a showing of Rose Bowl movies, a tour through WKAR-TV, a cannon concert and the

After several weeks of delay, the society reported it would not withhold approval and did not want to delay the experiment. But Dr. Albert Heustis, director of the state health department, charged that "publicly attributable to the society has created doubt, fear, and uncertainty in the minds of many people."

From other sources, however, came reassurance that the vaccine used in the inoculations will have no harmful effects.

O'Connor: "The foundation has tested its safety beyond any other test up for any other vaccine."

An advisory committee to the national foundation, "The possibility of infectious activity remaining in any vaccine... has been reduced to a point below which it cannot be measured by practicable laboratory methods."

In addition, the U. S. public health, the surgeon-general of the U. S., top medical authorities in Michigan, including the head of pediatrics at the two Michigan medical schools, and health departments of the participating counties have approved the tests.

Each batch of vaccine undergoes a month-long process of testing to make sure that it is safe to inject into humans. The tests are made by the commercial manufacturer, Dr. Salk's laboratory and the National Institute of Health in Maryland.

This process of testing, the specifications for the vaccine set up by Dr. Salk and the national foundation, and the assurances from national authorities far outweigh the contentions of those doubters who opposed the vaccine.

The mass trials have been called the greatest gamble in medical history. This may be true.

But it is a gamble that will pay off in increased knowledge for a new attack against one of man's oldest killers.

These people have no place in an institution of higher education and should be expelled even at the expense of our "big beautiful buildings," as you put it. I am not saying that they do not deserve a second chance if they fail once. Rather, it is the students who consistently fail to make a two-point that I am talking about.

You also insinuate that there are very few well-qualified serious students or potential students in the United States. This is not necessarily true. You seem to forget that there are many intelligent young men in

have set \$88,357 as their goal, which is about one-third of the \$290,000 set by all education and government organizations.

All college departments have been split into 17 campaign groups. Each has a different quota based on the group's ability to pay.

Students will not be asked to solicit, but they may produce during the drive from June 1 to June 10.

The money needed to pay the cost of additions to the three hospitals can only be met through public solicitations because the hospitals are non-profit organizations with no resources for such a program.

The interest MSC is taking in the drive is another indication the college realizes its responsibility to the community which surrounds it.

annual intra-squad football game.

Other special events during the weekend will be the Engineering Exposition and International Festival.

There's still time if you haven't invited them yet. And with the varied schedule of events, the chances are excellent that they'll enjoy themselves and appreciate the opportunity to learn more about MSC.

So There!

To the Editor

In answer to Al Curtis. You ask why all the furor? I think you answered your own question—the administration treats students as if they were children.

You also add, "But they frequently are." I don't consider "grill-hounds" and "panty raiders" who are in college. In my opinion, the tables should be turned.

There are also many other intelligent young people who, for financial and other reasons, cannot attend college even though they would like to.

It seems to me that the primary aim of any college should be to give the students a well-rounded education and produce intelligent leaders for the future. However, the administration seems to put more emphasis on discipline and doing the thinking for the students.

I consider it an encroachment upon my personal rights and those of my fellow students when the administration tells us when to come in at night, what to wear, and where to live.

The administration spends most of its time making and enforcing rules. Instead of giving us the education we desire and are paying for. These "disciplinary problems" do not exist at several other colleges which do not have the many rules that we have here.

Minnesota and Wisconsin are two of these colleges, and there are others. I see no reason for students to lose the rights they are born with merely because they are students.

If today's students have had their thinking done for them by their parents and now the administration, to whom they turn in the future when they are independent of both?

Nan Greenhields

Onions

To the Editor:

Miss Cynthia Scheer:

With deep resentment I read your highly debatable appraisal of Tuesday night's "Mambo Festival."

It is most unfortunate that your apparently conservative nature detracts from your appreciation of our Pan-American neighbors' musical culture. From

the Armed Forces who would "give their eye teeth" to be in college.

Instead they are training and fighting to protect the "grill-hounds" and "panty raiders" who are in college. In my opinion, the tables should be turned.

There are also many other intelligent young people who, for financial and other reasons, cannot attend college even though they would like to.

It seems to me that the primary aim of any college should be to give the students a well-rounded education and produce intelligent leaders for the future. However, the administration seems to put more emphasis on discipline and doing the thinking for the students.

I consider it an encroachment upon my personal rights and those of my fellow students when the administration tells us when to come in at night, what to wear, and where to live.

The administration spends most of its time making and enforcing rules. Instead of giving us the education we desire and are paying for. These "disciplinary problems" do not exist at several other colleges which do not have the many rules that we have here.

Minnesota and Wisconsin are two of these colleges, and there are others. I see no reason for students to lose the rights they are born with merely because they are students.

If today's students have had their thinking done for them by their parents and now the administration, to whom they turn in the future when they are independent of both?

Nan Greenhields

Onions

To the Editor:

Miss Cynthia Scheer:

With deep resentment I read your highly debatable appraisal of Tuesday night's "Mambo Festival."

It is most unfortunate that your apparently conservative nature detracts from your appreciation of our Pan-American neighbors' musical culture. From

previous experience, it is apparent that your lack of just criticism is not confined to music alone.

I would very much like to suggest that you break out of your narrow circle (educationally-wise) and note that the "Mambo" along with other Latin American music, is "Hot as Hell" in many of your larger cities, especially your show towns, New York, Chicago, and Hollywood.

In fact, New York and Chicago now have a couple of D J's who turn exclusively Latin American discs.

Being a professional musician, I believe, and many others who saw the show will agree with me, that the talent displayed on this stage last night was highly representative to Latin American music at its best. You'll go a long way to find a band as good as Tito Puente, a quintet like Joe Loco's, or dancers, anywhere, equal to the two men who danced the Mambo routine.

But why take my word; look at the record. The people assembled in the production hall have performed at the Miller's Rivera, Lou Walter's Latin Quarter, the best of TV shows, etc.; Chicago—Chee Paree, Palmer House, etc.; Miami—Saxony, Casablanca, Latin Quarter, etc. Record attendance has been broken at many of these places.

Maybe I shouldn't even mention the performers' past record, as judging from your review, you have probably never heard of these places and probably are used to "Joe Dook's Ballroom with Juke Box" style.

It also strikes me, that perhaps you think you possess the qualities of a professional critic, which is highly improbable after reading your amateur review.

Having observed the audience, I noted a great deal of enthusiasm for the talent of the performers, equally apparent at the end of the show and not "pretty well stamped out."

It was especially fine to note the atmosphere created a particularly international as well as a highly varied American crowd.

See LETTERS, page 6

Campus Classifieds

PHONE: ED 2-1511 EXT. 268
8 A.M. to 4 P.M.

CLASSIFIED RATES

Minimum 15 Words

1 day \$50
2 days \$75
3 days \$1.00
4 days \$1.15
5 days \$1.25

ADDITIONAL CHARGES
For each word over 15 3c
Charge for credit 15c

AUTOMOTIVE

BUICK 1958 4 door sedan. Excellent shape. 1960 motor. Seal beam head lights. 6 tires. \$125.00. Phone 7-5570. 204 So. Sycamore.

Kaiser 1948 34,000 miles 4 door sedan. Reasonable price. Original owner. 126 Division E. Lansing. 26

OLDS 48 Hydramatic 4 door. all extras met. seen \$425 by owner. Call 4-8704.

40 CHEV CLUB COUPE radio heater. sound motor. \$75. ED 2-1448 after six. Frank.

FORD 1960 2 door. Good condition. Call Bill at ED 2-3867.

ADVANCED MODELS waiting to be sold to Your Final Fling. all college. date April 20.

EMPLOYMENT

ATTENTION STUDENTS: An opportunity to work part time also summer employment. This is something that should be of interest to men and women with selling ability. Potentialities unlimited. Will average \$2 per hour for one willing to work. Call 2-3867.

SALESMEN AND Salesladies: One of Lansing's manufacturing companies has, through careful engineering and research, produced a chrome reflector for use in electric range. Non-competitive. Potentialities unlimited. Will average \$2 per hour for one willing to work. Call 2-3867.

SELLING OVER THE PHONE: Experience not necessary. We can show you how to sell. Your own hours. Phone and desk space provided. Age no barrier. Above average earnings. Phone for appointment. 7-0651.

WATER FRONT DIRECTOR: 3 unit leaders. girls camp 21 June to 4 Aug. Camp Muskegon. Call Placement Office today for appointment.

BOOKKEEPER AND OFFICE secretary. Call YVCA. YVCA. Phone ED 2-1511 for appointment.

FOR SALE

100 GRADUATED Name Cards \$2.50. Campus Press. 120 E. Main.

1 TICKET to Your Final Fling. Inquire at Union Ticket Office.

Michigan State News

Published on class days Monday through Friday, inclusive, during fall and winter and spring terms except days after holidays, weekly during summer term, and one special freshman issue between summer and fall terms. Entered as second class matter under act of March 3, 1979 at the post office, East Lansing, Mich. Member of the Indiana Daily Press and the Associated College Press. Mail subscriptions, payable in advance, for one term, \$5; for two terms, \$9.50; for three terms, \$14.50.

Churches

INTER-CITY BIBLE CHURCH

2871 East Michigan
WELCOMER
9:45 — Sunday School
11:00 — Morning Service
6:00 P.M. Youth Groups
7:30 P.M. Evening Service
*Interdenominational *Public Centered
Rev. Patterson, Pastor
Don Rindorf—Assistant Pastor

FIRST CHURCH OF CHRIST, SCIENTIST

(Corner East Grand River and
Bastet St.)
11:00 a.m. — Sunday School
11:00 a.m. — Morning Service
Wednesday Evening Service 8 p.m.
In Church Office
Weekdays 10-4 Saturday 10-1
Wednesday 1-5 p.m.
Christian Science Organization
at Michigan State College
News Every Tuesday Evening
7:15 p.m.
Chapel at Peoples Church—
East Lansing

PEOPLES CHURCH

EAST LANSING
Interdenominational
C. BRANDT TEFIT, Minister
Morning Worship
10:00 & 11:30
Church School 10:00 & 11:30
Junior Church 10:00 & 11:30
Campus Vespers 7:30 p.m.
The service will be held in the
Women's Parlor on the first floor
of the church.
The service will be in the nature
of a student party.
"Dare to Live By Doing."
Illustrative slides and movies
will be shown

CHRIST LUTHERAN CHURCH

(Missouri Synod)
122 South Penn. at E. Michigan
Rev. E. L. Wolf, Pastor
Two Services 8:30 & 11
"Alas! For It Was Borrowed"
Central Zone, Walther League
Spring Rally—7:30, Sunday
at the church

EAST LANSING TRINITY CHURCH

(Interdenominational)
Morning Service 11 a.m. — Sunday School 9:45 a.m.
Evening Service — 7:30
REV. JOHN MILES, Pastor
Masonic Temple, 311 W. A.C. Avenue
Midweek Bible Study Wednesday 7:00 p.m.

REDEEMER LUTHERAN CHURCH

(The United Lutheran Church in
America)
129 N. Pennsylvania Ave. Lansing
Rev. Charles T. Mueller, Pastor
8:15 & 10:45 Two Identical Services
"The Good Shepherd"
9:30 The Graded Sunday School
10:4 The Junior Church & Nursery
(Preschool thru 5)
A children's sermon every Sunday

ALL SAINTS EPISCOPAL CHURCH

The Episcopal Church Center
444 Abbott Road
Rev. G. M. JONES, rector
Rev. John E. Porter, Chaplain
Second Sunday After Easter
May 2, 1964
8:00 a.m. — Morning Prayer and
Sermon (Church School)
11:00 a.m. — Holy Communion
6:30 p.m. — Evening Prayer and
Canticle Service
Meeting a series of five
meetings on the topic
"A Christian Understanding of Sex"
Dr. David Newman,
Faculty Leader

Wesleyan Methodist

Sunday School 10 a.m.
Morning Worship 11 a.m. — Evening Service 7:00 p.m.
Youth Service at 6:30

EAST LANSING UNITY CENTER

425 W. GRAND RIVER
ROXIE G. MILLER Pastor
Sunday School — 11:00 a.m.
The Service — 11:00 a.m.
"The Spirit of True Worship"
Wed. 8:00 p.m. — Peace Begins
at Home
Carol Broughton, Organist
Kenneth H. Solist

COLLEGE LUTHERAN CHURCH

Division and Ann Streets
(two blocks north of Wolf, Pastor)
HERBERT C. WELF, Pastor
Sunday School — 9:30 a.m.
8:30, 9:30, 11 a.m. — The Service
Lutheran Student Association
7:30 p.m.

CHRISTIAN REFORMED

240 Marshall St.
Lansing, Michigan
SERVICES — 10 a.m. and 7 p.m.
YOUNG PEOPLE'S and STUDENT SCHOOL — 11:30
REV. H. DYKHOFF

ST. THOMAS AQUINAS CATHOLIC CHURCH

405 Abbott Road
Sunday Masses—7:30, 8:45, 10, 11:30, 12:30
Masses—Daily—7:00-8:00
Masses at Altar Road Chapel at 9 and 11
Holy Days of Obligation — 6 - 7 - 8 - 9 - 12
Marian Day Mass—Sunday 4:00 St. Thomas School Ground
at Altar Road

Confessions: Saturday 4:00 to 5:30 and 7:30 to 9:00 p.m.
Spanish Confessions — Call Father Rivera, ED 2-5911
Daily Rosary for Students—8:15 p.m.
Classes in the Fundamentals of Catholicism
Nov 10, 11, 12, 13, 14 Monday and Thursday
Communion: Club Open House — 7:30 p.m. Sunday
Communion: Breakfast, Sunday 10 a.m. — Newman Hall
Tuesday, 7:30 — Novena Services
Sunday, Philosophy Club discussion, 8:15 p.m.
Fr. J. V. MacEachern, Pastor
Fr. Paul DeRose, Asst. — Fr. Robert E. Kavanaugh, Asst.
Phone ED 2-5911

ST. ANDREWS

DIVINE LITURGY
Each Sunday 12:15 p.m.
In People's Church—Chapel
200 W. Grand River
East Lansing

All Eastern Orthodox Students Are
Urged to Attend

FIRST PRESBYTERIAN CHURCH

Ottawa at Chestnut
(College-Flower Bus Line)
William G. Kahn, Th. B. Min.
Church School — 9:45 a.m.
Morning Worship — 11:00 a.m.
College Age Forum — 7:00 p.m.
Dr. David Macphail, Director of
Music, Stephen Elvey, Organist

CENTRAL FREE METHODIST CHURCH

N. Washington at Jefferson
Angus D. McLachlin, Minister
10:00 Sunday School
A Class for College Students
11:00 Morning Worship
7:30 Evening Service

OLIVET BAPTIST CHURCH

2715 E. Michigan Avenue
Lansing, Michigan
BARRY E. BARST, Pastor
Church School — 7:45 a.m.
Sunday Morning Worship Service
11:00 a.m.
Baptist Youth Fellowship—4:00 p.m.
Sunday Evening Service—7:00 p.m.
Bible Study and Prayer Service
7 p.m. Thursday

CHURCH OF CHRIST

American Legion Memorial Center
on Valley Court
East Lansing
Serv. Sun. 10 a.m. Bible Study
11:00 a.m. Preaching and Worship
6:30 Young People's Song Service
Wed. 7:30 p.m. Bible Study
WESLEY S. BAWLEY, Minister
800 North Magnolia, Lansing
7:30 p.m. Preaching and Worship
Phone 9-0256

GO TO CHURCH SUNDAY

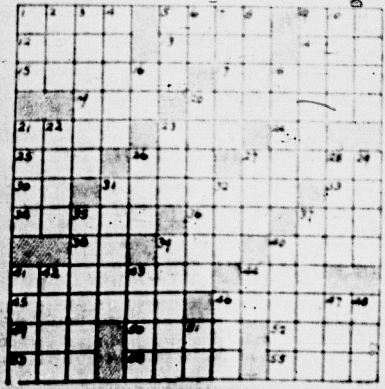
Letters to the Editor

The State News welcomes letters of general or local interest from its readers. Letters considered & published, in good taste, or exceeding practical publishing limits, will be withheld at the discretion of the editors. Letters should be 300 words or less in length and signed in ink by the writer.

Crossword Puzzle

ACROSS
1 Sea gulls
2 Alone
3 One
4 Eccentric
5 Rotating
6 Piece
7 Fish sauce
8 Highway
9 Liquor
10 Island east of Florida
11 Cause
12 Unit
13 Ringed
14 Liquor
15 Sphere
16 Toward
17 Annex
18 Revert
19 wonder
20 Food of bees
21 Parent
22 One who makes a speech
23 County
24 abbr.

DOWN
25 Rock
26 Base of the
27 system
28 Noah's boat
29 Sun god
30 Play
31 Football
32 Table dish
33 Moham.
34 Kind of sail
35 Legislative body
36 Ovary
37 comb form
38 compound of sodium
39 Notary
40 Notary
41 Armed
42 Jig
43 Volcano
44 ISRN
45 1st place
46 2nd place
47 3rd place
48 Meager



Information

INTERNATIONAL CLUB
8 p.m., 31 Union
Panel discussion on international Communism

SPARTAN SOCCER CLUB
2 p.m., Sat., Soccer Field
Snyder-Phillips vs. Off-campus

ALPHA KAPPA ALPHA AND ALPHA PHI ALPHA
9 a.m. Sat., Union Ballroom

THETA ALPHA PHI
6:30 p.m. Sun., Old College Hall. Important.

JAZZ CLUB
7 p.m. Sun., 31 Union
"The Chet Baker Sound"

HAWAII CLUB
7:30 p.m., Intention Center

Jazz Club to Hear Records by Baker

Chet Baker's modern, trumpet styling will be the program highlight of Sunday's Jazz Club meeting in 31 Union at 7 p.m.

Program chairman Bob Astalos will comment on the Baker recordings. Waxings made by Baker with the Gerry Mulligan quartet and his own group are scheduled.

The Club's plans for participation in the International Festival will be discussed.

All jazz enthusiasts are invited to attend.

Vocational Agriculture Teachers Plan Meeting

Men interested in teaching vocational agriculture will meet Saturday with the Michigan Association of Teachers of Vocational Agriculture and the Michigan State Agriculture Education Club.

The group will tour the campus and attend the MSC-Notre Dame track meet and the Purdue baseball games.

Spectators Watch Blaze



State News Photo by Mitchell

Spectators stand along the tracks, 20 yards from the elevator, where two trains were stopped during the blaze.

Fire Under Control



State News Photo by Mitchell

Firemen stand among the debris of the Haslett grain elevator as they keep the \$20,000 fire under control Thursday afternoon. The building was constructed of wood and sheet metal roofing.

Since 1929

May Sing Marks Anniversary

By BETTY ZUEGE
May Morning Sing Saturday morning will be somewhat special this year.

It is the twenty-fifth anniversary of the original Sing held in 1929.

The Sing also marks the twenty-fifth anniversary year of Beaumont Tower's dedication. The Tower was officially dedicated in June of 1929.

Third special point is the debut of Beaumont's newest carillon bell, the forty-fourth. Dedication of the bell will be May 8 in connection with Parent's Day activities.

On May Morning in 1929, members of the women's and men's glee clubs stood on different floors of the newly-completed Beaumont to serenade. Tomorrow the Men's Glee Club will sing in front of the Tower.

Beaumont was built in 1928 on the site of College Hall, the first building on campus in 1856. It was a gift of John W. Beaumont, Detroit alumnus and past member of the board of trustees.

Copied after the May ceremony at Magdalen Tower, Oxford University, Michigan State's original Sing had no tapping ceremony. Saturday, Mortar Board, senior women's honorary, will tap 20 junior coeds and Tower Guard, honorary for sophomore women, will tap 35.

The tapping ceremony and serenade on the eve of May Morning began in 1935 when Mortar Board and Tower Guard combined forces for the first time in their inauguration ceremonies.

Both organizations had new names at the time. Mortar Board, organized as a local honor and service organization.

Miss Buck said reserved tickets may be picked up at the door of the banquet Saturday night.

The dinner is sponsored by Theta Sigma Phi women's journalism honorary, in cooperation with the Journalism department, the student and Lansing professional chapters of Sigma Delta Chi, men's journalism fraternity and the Michigan Publishers' Association.

Some of the problems to be discussed is the 33 per cent drop in the number of graduating high school teachers in Michigan from 1950 to 1953.

William A. Early, president of the National Education Association, will deliver the keynote address.

Teachers, parents and service clubs will attend a conference Sunday and Monday at Kellogg Center to discuss "The Impending Crisis in Michigan Secondary Schools."

Among the problems to be discussed is the 33 per cent drop in the number of graduating high school teachers in Michigan from 1950 to 1953.

William A. Early, president of the National Education Association, will deliver the keynote address.

Teachers, parents and service clubs will attend a conference Sunday and Monday at Kellogg Center to discuss "The Impending Crisis in Michigan Secondary Schools."

Among the problems to be discussed is the 33 per cent drop in the number of graduating high school teachers in Michigan from 1950 to 1953.

William A. Early, president of the National Education Association, will deliver the keynote address.

Teachers, parents and service clubs will attend a conference Sunday and Monday at Kellogg Center to discuss "The Impending Crisis in Michigan Secondary Schools."

Among the problems to be discussed is the 33 per cent drop in the number of graduating high school teachers in Michigan from 1950 to 1953.

William A. Early, president of the National Education Association, will deliver the keynote address.

Teachers, parents and service clubs will attend a conference Sunday and Monday at Kellogg Center to discuss "The Impending Crisis in Michigan Secondary Schools."

Among the problems to be discussed is the 33 per cent drop in the number of graduating high school teachers in Michigan from 1950 to 1953.

William A. Early, president of the National Education Association, will deliver the keynote address.

Teachers, parents and service clubs will attend a conference Sunday and Monday at Kellogg Center to discuss "The Impending Crisis in Michigan Secondary Schools."

Among the problems to be discussed is the 33 per cent drop in the number of graduating high school teachers in Michigan from 1950 to 1953.

William A. Early, president of the National Education Association, will deliver the keynote address.

Teachers, parents and service clubs will attend a conference Sunday and Monday at Kellogg Center to discuss "The Impending Crisis in Michigan Secondary Schools."

Among the problems to be discussed is the 33 per cent drop in the number of graduating high school teachers in Michigan from 1950 to 1953.

William A. Early, president of the National Education Association, will deliver the keynote address.

Teachers, parents and service clubs will attend a conference Sunday and Monday at Kellogg Center to discuss "The Impending Crisis in Michigan Secondary Schools."

Among the problems to be discussed is the 33 per cent drop in the number of graduating high school teachers in Michigan from 1950 to 1953.

William A. Early, president of the National Education Association, will deliver the keynote address.

Teachers, parents and service clubs will attend a conference Sunday and Monday at Kellogg Center to discuss "The Impending Crisis in Michigan Secondary Schools."

Among the problems to be discussed is the 33 per cent drop in the number of graduating high school teachers in Michigan from 1950 to 1953.

William A. Early, president of the National Education Association, will deliver the keynote address.

Teachers, parents and service clubs will attend a conference Sunday and Monday at Kellogg Center to discuss "The Impending Crisis in Michigan Secondary Schools."

Among the problems to be discussed is the 33 per cent drop in the number of graduating high school teachers in Michigan from 1950 to 1953.

William A. Early, president of the National Education Association, will deliver the keynote address.

Teachers, parents and service clubs will attend a conference Sunday and Monday at Kellogg Center to discuss "The Impending Crisis in Michigan Secondary Schools."

Among the problems to be discussed is the 33 per cent drop in the number of graduating high school teachers in Michigan from 1950 to 1953.

William A. Early, president of the National Education Association, will deliver the keynote address.

Teachers, parents and service clubs will attend a conference Sunday and Monday at Kellogg Center to discuss "The Impending Crisis in Michigan Secondary Schools."

Among the problems to be discussed is the 33 per cent drop in the number of graduating high school teachers in Michigan from 1950 to 1953.

William A. Early, president of the National Education Association, will deliver the keynote address.

Teachers, parents and service clubs will attend a conference Sunday and Monday at Kellogg Center to discuss "The Impending Crisis in Michigan Secondary Schools."

Convo to Discuss Crisis in Schools

Teachers, parents and service clubs will attend a conference Sunday and Monday at Kellogg Center to discuss "The Impending Crisis in Michigan Secondary Schools."

Among the problems to be discussed is the 33 per cent drop in the number of graduating high school teachers in Michigan from 1950 to 1953.

William A. Early, president of the National Education Association, will deliver the keynote address.

Teachers, parents and service clubs will attend a conference Sunday and Monday at Kellogg Center to discuss "The Impending Crisis in Michigan Secondary Schools."

Among the problems to be discussed is the 33 per cent drop in the number of graduating high school teachers in Michigan from 1950 to 1953.

William A. Early, president of the National Education Association, will deliver the keynote address.

Teachers, parents and service clubs will attend a conference Sunday and Monday at Kellogg Center to discuss "The Impending Crisis in Michigan Secondary Schools."

Among the problems to be discussed is the 33 per cent drop in the number of graduating high school teachers in Michigan from 1950 to 1953.

William A. Early, president of the National Education Association, will deliver the keynote address.

Teachers, parents and service clubs will attend a conference Sunday and Monday at Kellogg Center to discuss "The Impending Crisis in Michigan Secondary Schools."

Among the problems to be discussed is the 33 per cent drop in the number of graduating high school teachers in Michigan from 1950 to 1953.

William A. Early, president of the National Education Association, will deliver the keynote address.

Teachers, parents and service clubs will attend a conference Sunday and Monday at Kellogg Center to discuss "The Impending Crisis in Michigan Secondary Schools."

Among the problems to be discussed is the 33 per cent drop in the number of graduating high school teachers in Michigan from 1950 to 1953.

William A. Early, president of the National Education Association, will deliver the keynote address.

Teachers, parents and service clubs will attend a conference Sunday and Monday at Kellogg Center to discuss "The Impending Crisis in Michigan Secondary Schools."

Among the problems to be discussed is the 33 per cent drop in the number of graduating high school teachers in Michigan from 1950 to 1953.

William A. Early, president of the National Education Association, will deliver the keynote address.

Teachers, parents and service clubs will attend a conference Sunday and Monday at Kellogg Center to discuss "The Impending Crisis in Michigan Secondary Schools."

Among the problems to be discussed is the 33 per cent drop in the number of graduating high school teachers in Michigan from 1950 to 1953.

William A. Early, president of the National Education Association, will deliver the keynote address.

Teachers, parents and service clubs will attend a conference Sunday and Monday at Kellogg Center to discuss "The Impending Crisis in Michigan Secondary Schools."

Among the problems to be discussed is the 33 per cent drop in the number of graduating high school teachers in Michigan from 1950 to 1953.

William A. Early, president of the National Education Association, will deliver the keynote address.

Teachers, parents and service clubs will attend a conference Sunday and Monday at Kellogg Center to discuss "The Impending Crisis in Michigan Secondary Schools."

Among the problems to be discussed is the 33 per cent drop in the number of graduating high school teachers in Michigan from 1950 to 1953.

William A. Early, president of the National Education Association, will deliver the keynote address.

Teachers, parents and service clubs will attend a conference Sunday and Monday at Kellogg Center to discuss "The Impending Crisis in Michigan Secondary Schools."

Among the problems to be discussed is the 33 per cent drop in the number of graduating high school teachers in Michigan from 1950 to 1953.

William A. Early, president of the National Education Association, will deliver the keynote address.

Teachers, parents and service clubs will attend a conference Sunday and Monday at Kellogg Center to discuss "The Impending Crisis in Michigan Secondary Schools."

Among the problems to be discussed is the 33 per cent drop in the number of graduating high school teachers in Michigan from 1950 to 1953.

William A. Early, president of the National Education Association, will deliver the keynote address.

Teachers, parents and service clubs will attend a conference Sunday and Monday at Kellogg Center to discuss "The Impending Crisis in Michigan Secondary Schools."

Among the problems to be discussed is the 33 per cent drop in the number of graduating high school teachers in Michigan from 1950 to 1953.

William A. Early, president of the National Education Association, will deliver the keynote address.

Teachers, parents and service clubs will attend a conference Sunday and Monday at Kellogg Center to discuss "The Impending Crisis in Michigan Secondary Schools."

Among the problems to be discussed is the 33 per cent drop in the number of graduating high school teachers in Michigan from 1950 to 1953.

William A. Early, president of the National Education Association, will deliver the keynote address.

Teachers, parents and service clubs will attend a conference Sunday and Monday at Kellogg Center to discuss "The Impending Crisis in Michigan Secondary Schools."

Among the problems to be discussed is the 33 per cent drop in the number of graduating high school teachers in Michigan from 1950 to 1953.

William A. Early, president of the National Education Association, will deliver the keynote address.

Teachers, parents and service clubs will attend a conference Sunday and Monday at Kellogg Center to discuss "The Impending Crisis in Michigan Secondary Schools."

Among the problems to be discussed is the 33 per cent drop in the number of graduating high school teachers in Michigan from 1950 to 1953.

William A. Early, president of the National Education Association, will deliver the keynote address.

Teachers, parents and service clubs will attend a conference Sunday and Monday at Kellogg Center to discuss "The Impending Crisis in Michigan Secondary Schools."

Among the problems to be discussed is the 33 per cent drop in the number of graduating high school teachers in Michigan from 1950 to 1953.

25 Feet High

Frosh-Sophs Erect New Grease Pole

When a grease pole disappears, anything can happen.

Frosh-Soph Day committee members made plans Wednesday to set up the pole used for last year's grease pole contest. This pole had been stored last May near the Electrical Engineering Building.

When the group looked for the pole they found that it had disappeared. The search then began for a new pole.

The committee for the grease pole contest asked the grounds department for a pole. They were then sent to several organizations to get funds but no one could help the group.

Funds were finally located and erection of a brand new, galvanized steel rod began Thursday afternoon. About 12 workmen from the grounds and electrical departments erected the pole near first Cedar back of Kellogg Center.

The 25 foot rod, imbedded in two yards of concrete, will be a permanent structure dedicated by this year's group for use in future Frosh-Soph contests.

Formerly, wooden poles were used each year by the freshmen and sophomores for the contest, but these were not found to be very effective.

The rod, which is four inches in diameter, will be greased with lard and sawdust will cover the ground surrounding the pole.

The contest will be run with the sophomores on the defensive and the freshmen attempting to break through to climb the pole. Last year the freshmen won the contest.

Nursing Instructor Attends Convention

Miss Marvel Omland, instructor in nursing education, is attending the American Nurses Association convention held in Chicago Thursday and today.

Features Campus Scenes

Union Mural Room Hosts Broadcasters

Radio broadcasters as well as student and faculty groups have found the Union's Mural Room to their liking.

Fall sportscasts on MSC football by Bob Reynolds, and Marshall Wells' farm programs have had the Mural Room as their source. They are heard over WJR in Detroit.

Some of the programs have been transcribed in WJR's Detroit studios and later re-broadcast, according to Richard Byström, assistant Union manager. Others are heard "live" from the campus, he said.

Radio equipment is kept in the room in two cabinets on the east wall, which has no murals. Acoustical material which covers the ceiling is an advantage for the broadcasters.

Chicago photographers chose scenic campus spots as subjects for the murals, which cover the other three walls of the room. Michael Dmochowski, Union Manager, said. The murals went up in 1947, when the Union was reorganized.

Among the wall-size pictures in the second-floor room are shots of Beaumont Tower, Real Botanical Gardens, the South Campus foot bridge, rapids of the Red Cedar, the Band Shell and paths near Campbell Dormitories.

"We use the room as a place for small meetings," Dmochowski said. "Groups of from five to 15 people can comfortably discuss business around the room's meeting table."

New pictorial additions to the room are not likely, Dmochowski said.

U-RENT-IT-SHOP
ALL TYPES HOME
MAINTENANCE EQUIPMENT
2 AND 4 WHEEL TRAILERS
CEMENT MIXERS
2213 E. Michigan Ph. 4-6317

International Group To Study Red Defense

The International Club will meet tonight at 8 in 31 Union to discuss the topic, "Military preparedness and collective security as the only way to combat Communism on a global scale."

Four foreign students will compose the panel discussion to be led by Dr. Ralph Smucker of the political science department.

Bill Bailey's
WATCH FOR NEW OPENING
New Location
1113 S. Cedar

Music Department Faculty to Present Own Compositions

A special music program, open to the public, will be presented Tuesday in honor of Michigan Week.

The program, featuring original compositions by members of the MSC music faculty, will be held in the Music Auditorium at 8 p.m.

Included in the program are works of H. Owen Reed, head of the theory department, and Oscar Stover, director of the Activities Band.

Other composers are Paul Harder, Russell Friedewald, Samuel Scott, Edgar Kirk, Stanley Finn, Douglas Campbell and James Niblock, all of the music department.

You Date?

of course

Bring your date to the

HIDE-AWAY

DINNERS - SNACKS
FOUNTAIN SERVICE

RENT A NEW CAR!

Completely Equipped With Radio & Heater

Low Daily, Weekly Rates

5 CAN RIDE FOR THE PRICE OF ONE

ALADDIN SYSTEM
PH. 9-9788
2213 E. Michigan - Lansing

110 W. Grand River Ave.
Telephone 4-5371

IT'S ALL A MATTER OF TASTE

Late for your date? She hates to wait? Need something nice to soothe her? Give her a round, firm Lucky Strike. They're cleaner, fresher, smoother!

W. T. Donoghue University of Virginia

When you come right down to it, you smoke for one simple reason...enjoyment. And smoking enjoyment is all a matter of taste. Yes, taste is what counts in a cigarette. And Luckies taste better.

Two facts explain why Luckies taste better. First, L.S. M.F.T. - Lucky Strike means fine tobacco...light, mild, good-tasting tobacco. Second, Luckies are actually made better to taste better...always round, firm, fully packed to draw freely and smoke evenly.

So, for the enjoyment you get from better taste, and only from better taste, Be Happy - Go Lucky. Get a pack or a carton of better-tasting Luckies today.

My roommate was a grouchy soul. No person could be meaner. But Luckies made him change his tune. They're smoother, fresher, cleaner!

Chad Forsnell Indiana University

When you light a Lucky Strike, You're sure to recognize That cleaner, fresher, smoother taste Collegians idolize!

Jean N. Singleton San Jose State College

COLLEGE SMOKERS PREFER LUCKIES
A comprehensive survey-based on 31,000 student interviews and supervised by college professors-shows that smokers in colleges from coast to coast prefer Luckies to all other brands! The No. 1 reason: Luckies' better taste!

CLEANER, FRESHER, SMOOTHER!

LUCKIES TASTE BETTER

ANNOUNCING East Lansing's NEW SELF-SERVE LAUNDRY

Albert St. Launderette
306 Albert St.-around the corner from the Bus Station

Compare Our Special SELF-SERVE PRICES

1 Bendix load-25c
1 load fluffdried-15c

Soap - Free
Extractors - Free

Plenty of equipment - No waiting
Special cash & carry rates on Dry-Cleaning & Shirts

STATE
NOW! 2-DAYS ONLY-2 DOORS OPEN 6-45

Becker's Drive In
2121 E. Michigan
HAMBURGERS
MALTEDS - DINNERS

Amber
The Woman
The Picture
You'll Remember
Forever!

Feature Show 7:00 9:50
Complete Show 9:20

FOREVER AMBER

Linda DARNELL - Cornel WILDE
Richard CRANE - George SANDERS

WEEK IN AND WEEK OUT
BIG PICTURES AT
LITTLE PRICES!

SUNDAY
DOORS OPEN 12:45 P.M.
FEATURE SHOWN AT
1:30 - 3:30 - 5:30 - 7:35 - 9:45

Every minute
flames with
furious action!

as Rob Roy
roars on his
fighting way
for love and
justice!

Walt Disney's Rob Roy
THE HIGHLAND ROGUE

Starring
TODD - JONES
Featurette
1:00-3:00-5:08
7:15-9:22

AND Walt Disney's PECOS BILL
TECHNICOLOR

COMING
ALAN LADD "Saskatchewan"

Wanted: Tailback-Contact Grid Coach, University of Minnesota

(Editor's Note: This is the seventh in a series of articles dealing with spring football practice at each of the Big 10 schools.)

By CHUCK MILLER
State News Sports Editor

A one-man team cannot be depended upon to win consistently. Although there may be some who disagree, Minnesota's 1953 football machine was just that, and with the inevitable results.

"Stop Giel, and you stop the Gophers," was the word flashed around the conference last year.

The Spartans did just that. The All-American fullback, and an exceptionally good one, was smothered by white jerseys every time he ran with the ball against Michigan State last fall.

He carried the ball 25 times and gained 23 yards. Results, a 21-0 beating, with LeRoy Bolden taking over the All-American role with a three touchdown display.

Illinois stopped Giel and won the game, 27-7. Iowa stopped him and they won, 27-0. Southern Cal stopped him in the first half, but he ran wild in the second. However, the Trojans managed to hang on for a 17-7 win.

Against Northwestern, Michigan, Pittsburgh and Indiana, the

"North Star" had good days and his team won easily.

In the season's finale against Wisconsin, the Giel-Ameche duel ended in a 21-21 tie.

That was the story of Minnesota's grid fortunes last year. "As Giel goes, so go the Gophers," was an often-heard quote last year. And Giel is "real gone" now. He is appearing in a Minnesota uniform for the last time this spring during the baseball season.

So, with Giel absent from spring football practice, the main job of Coach Murray Warmath is to find a tailback with Giel's talents to fit in with the Gopher's single-wing offense.

If none is available, the Gopher mentor best try another type of offense, not so dependent on one man.

Oh, Minnesota had other players last year, in fact 21 of them are returning to the grid wars.

Included in the returnees are: three ends, three tackles, four guards, two centers, two quarterbacks, four fullbacks and a fullback.

Some of the better known players—those that managed to squeeze into the headlines when



MURRAY WARMATH
... Gopher Mentor ...

Giel didn't, are four three-time lettermen.

John Baumgartner will be back at fullback along with right half Bob McNamara. Center Gerry Helgeson and tackle Gordie Holz will form the nucleus of an all-veteran line.

With the exception of a tailback, Warmath can count on at least a two-letterman at every position.

In fact, of the 21 lettermen, only five of them are one-time winners.

At first glance, this would seem very impressive, but that one exception—tailback—is very significant.

Last year's statistics tell the story.

Giel was the workhorse, carrying the ball nearly every other time and throwing 93 of the 139 passes attempted by the Gophers. He carried the ball 198 times, picking up 925 yards, and scoring 54 points on nine touchdowns. Next closest was McNamara with 299 yards on 59 tries. However, he failed to score.

Met Holme, regular fullback last year after Baumgartner was sidelined with injuries, picked up 280 yards on 64 carries for two touchdowns.

Then came Baumgartner with 91 yards on 26 attempts.

The passing statistics follow the same pattern.

Giel completed 50 of his 93 passes for 590 yards and four touchdowns.

Next in line was quarterback

Geno Cappelletti, who will be back this year, with nine out of 33 for 145 yards and one touchdown.

A bright spot is the passing of Giel's understudy last year, Dale Quist. He completed five of six passes for 73 yards. However, his running was only fair, with 50 total yards in 23 tries.

In the pass receiving department, the only phase of the game that Giel didn't lead the team in because he was on the passing end of most attempts, the top four men are back.

McNamara caught 15, for 204 yards and one touchdown, and Jim Soltan pulled in 12 for 156 yards, another end, Ron Smith caught seven for 103 yards and Cappelletti received 12 for 139 yards.

In punting, Giel, the top man with 835 yards on 24 kicks for a 34.8 average is gone. Cappelletti, with 17 kicks for 611 yards, and a 35.9 average was second.

Total statistics show even more clearly Giel's contribution to the team effort.

Minnesota picked up a total of 2,326 yards. Giel accounted for more than half, with 1,339.

It is evident what Warmath's chief problem is.

If he can come up with someone who can match Giel's talents, the Gophers will have a first division club.

However, it seems doubtful that they can find someone better than the North Star, it will be surprising if they can find someone as good.

Yet, if they do the fact still remains, a one-man team is not dependable.

Instead of searching for another Giel, Warmath might better develop a new type of offense—one not so dependent upon the success of one individual.

The fullback spot in the single-wing is like the key in the lock, if you lose the key, or break it, the lock is worthless.

"A chain is no stronger than its weakest link," etc. etc.

Thus, as the Big 10 teams near the end of their spring drills (and we near the end of these series) probably the biggest question mark in the league is "who will play fullback for Minnesota?"

With the wealth of material he has to work with, Warmath could well turn that question mark into an exclamation point with the right combination.

MINNESOTA'S 1954 Schedule

Sept. 25 Nebraska—home	Oct. 2 Pitt—away
Oct. 2 Northwestern—home	Oct. 16 Illinois—home
Oct. 21 Michigan—away	Oct. 28 Michigan State—home
Nov. 4 Oregon State—home	Nov. 12 Iowa—home
Nov. 20 Wisconsin—away	

VanDervoort's
Spartan Sports Headquarters

for all around campus wear you just can't beat

SPALDING SADDLES

Everything you've heard about these wonderful saddle shoes is true. They lead the field for smartness, for comfort, for wearability. Soft tapered toes make them campus leaders everywhere. In brown and white, black and white.

\$9.85

• black & white
• brown & white

Standings

AMERICAN LEAGUE				NATIONAL LEAGUE			
	W	L	Pct.		W	L	Pct.
Chicago	8	5	.615	Cincinnati	9	6	.600
DETROIT	6	4	.600	Brooklyn	8	6	.571
Washington	6	5	.545	St. Louis	7	6	.538
Philadelphia	5	5	.500	New York	7	6	.538
New York	6	6	.500	Philadelphia	6	6	.500
Cleveland	5	6	.455	Chicago	5	7	.416
Baltimore	3	7	.312	Milwaukee	5	7	.416
Boston	4	7	.364	Pittsburgh	6	10	.375

THURSDAY'S RESULTS

Cleveland 6, Boston 3
New York 5, Chicago 4
Baltimore 2, Washington 1

Only Games Scheduled

PROBABLE PITCHERS

Detroit at Washington, night—Garver (2-0) vs. Shea (0-0).
Baltimore at Philadelphia, night—Pilleite (2-0) vs. Kellner (1-2).
Cleveland at New York—Lemon (2-0) vs. Morgan (1-0).
Chicago at Boston—Kreagan (2-0) vs. Hudson (0-0).

THURSDAY'S RESULTS

Pittsburgh 4, St. Louis 3
Brooklyn 7, Cincinnati 5
Philadelphia 4, Milwaukee 0

Only Games Scheduled

Brooklyn at Cincinnati, night—Newcombe (1-1) vs. Podbielan (1-0).
Pittsburgh at Milwaukee, night—Simmons (2-1) vs. Conley (0-0).
New York at Chicago—Maglie (2-0) vs. Rush (1-1).
Pittsburgh at St. Louis, night—O'Donnell (1-0) vs. Lint (0-0) or Miller (0-0).

Nobody Likes It Tigers Restless After Four Off Days

WASHINGTON (AP)—Detroit's Tigers impatiently idled through their fourth successive day off Thursday. Nobody seemed to like it.

One of the Tigers who didn't go for it and expressed himself eloquently was Rookie Bill Tuttle.

"Even if you expect to sit on the bench, you don't like postponements," Tuttle said.

The young outfielder, a sensation up to now with his 405 batting average in 10 games, hasn't had much to do with the bench, either.

The schedule idled Detroit Thursday. It was an open date. The three previous empty afternoons were the result of one other open date and the washout of the two-game Philadelphia Athletics series.

Friday night Ned Garver will try for his third straight victory as Detroit opens a two-game series with the Washington Senators. Steve Gromek will seek his fourth straight in Saturday's game against Washington.

The Tigers would have worked out at Griffith stadium Thursday, but the stadium wasn't available. So Manager Fred Hutchinson held a quiet meeting at the hotel.

Hutchinson admitted concern over young Billy Holt but indicated he felt the trouble wouldn't last.

The 25-year-old left-hander was bumped around in spring drill and got rapped hard in his regular season appearances against Chicago and Cleveland.

Hutchinson said he feared Holt hadn't yet started taking things seriously enough but that he expected the young man to get over this.

OXFORD, England (AP)—Roger Bannister, England's great mile runner, has won the 1954 mile in 4:23.2, the fastest time in the world.

He will run the mile in the annual Amateur Athletic Union track meet against Oxy on May 1. It was in this same meet last year that Bannister did a 4:10.6, the official British record, over this.

Notre Dame, under the tutelage of Coach Charlie Samson, has five returning lettermen, all of whom are juniors. The quintet is headed by Captain Chuck Gallagher.

Notre Dame also has on its roster John Sturdliffe, son of one of the Irish's famous "Four Horsemen," Harry Sturdliffe.

Taking the weekend trip along with Coach Beeman are Captain Jim Vore, Dick Menzel, Dave and Jim Brogan, Arnie Hoffman, Dana Squire, Jim Beecham, and Dean Britton.

LAST TIMES TODAY

"PHANTOM OF THE RUE MORGUE"

GLADMER THEATRE

STARTS SUNDAY

Blazing Spectacle of Fabulous Splendor, Powerful Action and Romantic Mystery!

ACTUALLY FILMED IN CEYLON!

ELIZABETH TAYLOR
DANA ANDREIUS

ELEPHANT WALK

HOUSE MANSION OF MYSTERY
In Technicolor
PETER FINCH

EXTRA ADDED ATTRACTIONS
LATEST MOVIE NEWS EVENTS
COLOR CARTOON
"POPEYE'S 20th ANNIVERSARY"

COMING SOON
"THE BEST YEARS OF OUR LIVES"

MSC Backfield Puzzles Devine

By DONN SHELTON

How deep is deep? Backfield Coach Dan Devine isn't quite sure. He hears a lot about how deep MSC is in the backfield. Then he goes out and looks at his backs and wonders, "How deep is deep?"

In personnel he is very deep—at least six men at each position.

In very good men he is deep, three or four at every position.

But in experience, where really counts, he is very short. Co-coach, LeRoy Bolden is the returning member of last year's "pony" backfield.

Of the other backs, only Jerry Planitus has an amount of game experience.

At the halfback posts are a host of men with some game experience and some very good freshmen.

Bolden needs no introduction to MSC fans. He was a captain and wide last year as the runner, pound for pound, in the country. "Bodie" was elected captain of the 1953 team with fight end Don Kaub.

A driving runner, the halfback has worked hard spring on his pass, defense, shows improvement every day.

Behind Bolden are two good runners with little experience, Gary Lowe and Musetti.

Lowe is a big (195-pound) back and runs with all the power in his weight. He played sparingly last year and scored touchdowns against Indiana.

Musetti is just beginning to show the promise that the coaches had hoped for, according to Devine. This is his best spring. He is looking very good.

Rudy Gaddini, a converted freshman fullback, rounds out the parade of halfbacks. Gaddini is another power runner and a very good blocker.

On blocking on pass plays, has been notable and he is a good tackler on defense.

At right half the depth is very prominent. Injuries sidelined the top two men, Eggleston and Turner.

These two were the only ones playing time.

Both are exceptionally good and both are members of the track team. Bugs ran the sprints in the indoor season and Eggleston helped win the state mile hurdle title for MSC at the Drake Relays last week.

Eggleston is sidelined by a knee injury, while Turner is bothered by a badly twisted ankle.

The first-stringer at fullback is a player who has the potential to become a great player, according to Devine.

Lou Costanza, their replacement, needs only the year mentioned experience to make him a solid member of the backfield corps.

The Dunmore, Pa., freshman is a hard runner. He looks exactly like Don McCauley, captain of the 1952 MSC team. Stocky and very powerful, he resembles McCauley in build and off. He is promising.

Costanza's ability as a driving runner was shown last year when he was voted his teammates as the outstanding freshman griddle.

Right behind Costanza is a co-freshman, Howard Greaves, fast runner and good ball carrier. Greaves is strongest on the defensive game. He is a hard sure tackler.

How deep is deep? Depend on how you measure it.

Field events will be run at the west of the will be their I.D. event.

Jim Harrison, Notre Dame's vault jumper, came in the pole vault last year.

Harrison, the week at the with a vault, cleared 10 feet 4 inches. He is better than the others.

Opposition for the Chuck Cook, Notre Dame's door jumper.

In the mile, 4:14 mile I.D. Relays, Notre Dame placed him among the door mile.

Spartan's door 880 chair top competitor to be one of day Cook 4:14 mile this.

Another second place of trophy in the high second last year, with a 4:14 mile.

Hillmer, Spangler, J. Buehler, Ed Braithwaite, and 190 and 220 cents are close.

Johnnie K. Greaves, 110 lbs. He won last June.

It's "Ox"

Arr

Now Showing at W.S. Butterfield Theaters

Thru Thursday
Cinemascope and Color
"LUCKY ME"

with
Doris Day - Robert Cummings

Thru Saturday
3-Dimension
"PHANTOM OF THE RUE MORGUE"

with
Carl Malden - Patricia Medina and Claude Dauphin

Thru Saturday
"BAD FOR EACH OTHER"

with
Charlton Heston
Elizabeth Scott & Diane Foster and
"DEVILS CANYON"

in Technicolor
with
Virginia Mayo-Dale Robertson

A MIGHTY SPECTACLE OF A SWIFT ERA... IN LAWLESS LUSTY ROME!

ALL HAIL
M-G-M'S DRAMATIC MASTERPIECE OF WILLIAM SHAKESPEARE'S
JULIUS CAESAR

STARRING
MARLON BRANDO • JAMES MASON
JOHN GIELGUD • LOUIS CALHERN
EDMOND O'BRIEN
AND GREER GARSON • DEBORAH KERR

THE Esquire

NOW PLAYING...
Shows at 1:00 - 1:40 - 6:15 - 9:05
Features at 1:45 - 4:30 - 7:00 - 9:45

SPECIAL STUDENT DISCOUNT COUPON

This coupon, when presented at the box office of the Esquire Theatre, Lansing during the engagement of JULIUS CAESAR Mondays thru Fridays - up to 5 P.M. will entitle the bearer to this student discount rate. The coupon must be exchanged at the box office for an admission ticket.

Student Price 50c

MIDNIGHT SHOW TONIGHT

NOW! **MICHIGAN Theatre**

It's no secret! YOUR SECRET LOVE GAL HAS HER BIGGEST HIT OF ALL IN

Lucky Me!

CINEMASCOPE AND WARNERCOLOR

IT STARS
DORIS DAY
ROBERT CUMMINGS
PHIL SILVERS

It's the fastest paced pleasure that ever spread a wide smile across the face of the screen!

10 Top Pop Tunes!

Screen Play by JAMES O'HANLON, ROBERT O'HANLON and JAMES O'HANLON. From a story by JAMES O'HANLON. Based on the book by Ray Bradbury. PRODUCED BY HENRY BLANKE. DIRECTED BY JACK DONAGHY.

ALL ITS GLORIES MORE GLORIOUS IN STEREOGRAPHIC SOUND

EXTRA LATE NEWS & SPECIALTY.

ADMISSION:
Week-End Matinee 65c
Evenings & Sunday 90c
Children (A.D. Time) 50c

RENT
a typewriter
and keep up with your work

Portables
Standard Office Machines
Wide Carriage Machines
Rates as low as \$5.00 Per Month

FRANKLIN DOKLEINE COMPANY
Ph. 5-7184
815 N. Grand Ave., Lansing

Friday, April 30, 1954

THE MICHIGAN STATE NEWS

Page Five

Home Contests Scheduled for Baseball, Track Teams

Irish Here For Only Home Meet

By BOB SMITH

Spartan track fans will get their only chance to see their team in action Saturday afternoon when the Spartans, led by Capt. John Corbelli, play host to a strong Notre Dame squad in a dual meet.

Notre Dame boasts two pole vaulters, a miler, and a high jumper that are among the best collegiate competitors in these events. However, the Irish do not have only a four man team. Spartan Coach Karl Sehldebrand said that he felt that the two teams were so evenly matched that he wouldn't venture a prediction on the outcome.

Field events will begin at 1:30 p.m. with the first running event slated for 2. The meet will be run off on the track just west of Macklin Field. Students will be admitted by showing their I.D. cards.

Jim Harrington holds both the indoor and outdoor marks for Notre Dame in the pole vault with vaults of 14'4" and 14'1" respectively. His most recent win came in the Penn Relays championship last Saturday.

Harrington's teammate, Joe Springer, tied for top honors last week at the famed Drake Relays with a vault of 13'6". Springer has cleared 14' three times and Irish coach Alex Wilson feels that he is better than Harrington outdoors. Opposing this one-two punch for the Spartans will be Chuck Cockland who consistently jumps 13' or better.

In the mile Notre Dame has sophomore Bill Squires whose 4:14 mile in the recent Texas Relays not only set a new Notre Dame record but also placed him fourth in the nation among the current leading outdoor milers.

Spartan John Cook, Big 10 indoor 880 champ, will be Squires' top competitor in what promises to be one of the best races of the day. Cook has also turned in a 4:14 mile this year.

Another sophomore from South Bend who promises to give State plenty of trouble is Bernie Allard in the high jump. Allard took second last week at the Penn Relays with a good leap of 6'6". Don Hillmer, Spartan sophomore who placed second at the Drake Relays figures to give Allard something to worry about all afternoon.

Hurdler Harvey Newman is a tough hurdler when he's right and is expected to give Spartan ace Corbelli plenty of trouble.

Sprinters Jim Pitcairn and Joe Campanella will tangle with State's Ed Brabham, Julius M. Cox, Art Ingham, and Lou Varsha in the 100 and 220 yard dashes. Both events are expected to be very close.

Johnnie Kilbane held the featherweight title for more than 11 years. He won it Feb. 22, 1912 and lost it June 2, 1923.



CAPT. JOHN CORBELL
leads Spartans against Irish



ED BRABHAM
MSC sprinter

Kobsmen Play Illini, Purdue Twice

By ED SLOBODNIK

Weather permitting, Michigan State's baseball team will meet defending co-champion Illinois at 3:30 p.m. today in its Big 14 home opener at Old College Field.

The Spartans will then gather forces for a double-header invasion by Purdue Saturday. The first of the two games will start at 7:30 p.m. and will be a regular nine-inning affair.

The second, which will be called at the end of seven innings, is scheduled to start 20 minutes after the completion of the first.

Coach John Kobs has called upon Spartan ace Bud Erickson (2-0) to hurl against the Illini. Ed Hobough (1-0) will pitch the first game Saturday. Kobs' night-cap choice will depend upon probable relief needs in the earlier games.

Erickson, in quest of his second Big 10 win and third of the season, will be opposed by either Jim Flynn (0-1), an Illini sophomore lefty from Oquoss, Mich., or John Sabalasky (1-0), a right-hander.

Purdue coach Henry Stram has nominated Don Barton (0-1), a right-hander, for Saturday's first game, and lefty Ray Rosenbaum (0-1) for the second.

The Illini, after a 3-1 non-conference win over Illinois Wesleyan Tuesday, have shown no sign of breaking their hitting slump.

In that game, they collected just five hits to run their hit total to only 24 in the last 51 innings.

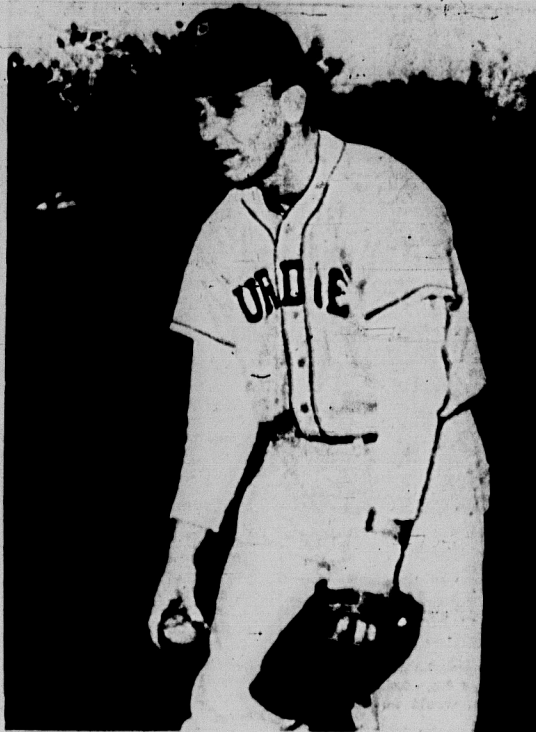
Purdue, with a 1-2 conference record, features hard-hitting sophomore Joe Saxon. Saxon batted out six hits, including a homer and double, in 10 trips to the plate last weekend for a lofty .600 average.

Spartan shortstop John Matsock, who suffered a slight ankle sprain in Wednesday's practice session, will be in the starting lineup today.

Bill Hopping, reserve infielder, was less fortunate. The severe ankle sprain he sustained early this week is expected to keep him out for two weeks.

The National Sportsman's Show will be held in Madison Square Garden, Feb. 20 through Feb. 28.

MITCHELL'S
Shell Service
Michigan and Center
East Lansing,
Michigan
Ph. ED 7-9817



DON BARTON
on the mound for Purdue

World Mat Championships Thomas Tokyo Bound

A Michigan State physical education instructor will represent the United States in the world's amateur wrestling championships at Tokyo, Japan, next month.

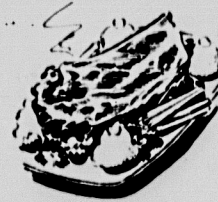
His future goals include the world's title this year, the Pan-American games crown next year and an Olympic title in 1956.

Thomas received his Tokyo bid after winning the 191-pound free style and Greco-Roman championships in the recent National AAT meet in San Diego, Calif. He also was named the most outstanding Greco-Roman competitor in the competition and placed second in the free style grade.



... Steaks ... Steaks
Sea Foods ... Chicken
4 Dining Rooms
PAGODA
RESTAURANT
1924 E. Michigan Ave.

A
Good Place
to
Eat



- Reasonable Prices
- Fast Service
- Pleasant Atmosphere

Chickee Shoppe

1311 E. Michigan

Ph. 4-2115

PROBABLE STARTING LINEUPS

MICHIGAN STATE

George Smith, 2b
John Matsock, ss
Chuck Mathews, 1b
Dan Brown, if
Tom Vowles, c
John Polomik, cf
John Kiech, cf
Jack Zettler, 3b
Bud Erickson (2-0), p
(Friday)
Ed Hobough (1-0), p
(Sat. 1st game)

ILLINOIS

Vince Feigenbutz, ss
Ron West, if
Ron Utes, cf
Max Hooper, 1b
Mike Madson, rf
Joe Fitzgerald, 2b
John Hester, 3b
Bob Wiman or Tom Scott, c
Jim Flynn (0-1) or
John Sabalasky (1-0), p

PURDUE

James Schorr, if
Bob Conlin, ss
John Enriette, 3b
Joe Saxon, cf
Joe Peters, cf
Ron Oucha, 1b
Randall Hunter, c
Ted Server, 2b
Don Barton (0-1), p
(1st game)
Ray Rosenbaum (0-1), p
(2nd game)

HIGH READERSHIP

DRIVE-IN THEATRE
Open 7 p.m. Ph. ED 2-1043
Tonight Only

"DEVILS CANYON"
—PLUS—
"VEILS OF BAGDAD"

Saturday Only
Nothing Repeated
"VEILS OF BAGDAD"
"DEVILS CANYON"
"CALIFORNIA OUTPOST"
—And—
"MIGHTY JOE YOUNG"

Sunday and Monday
"SASKATCHEWAN"
Alan Ladd-Shelley Winters
—PLUS—
"THE CAPTAIN'S PARADISE"
Alec Guinness-Yvonne DeCarlo

BE OUR GUEST for LUNCH

★ Beefburger

- Soup
- Coffee

57c

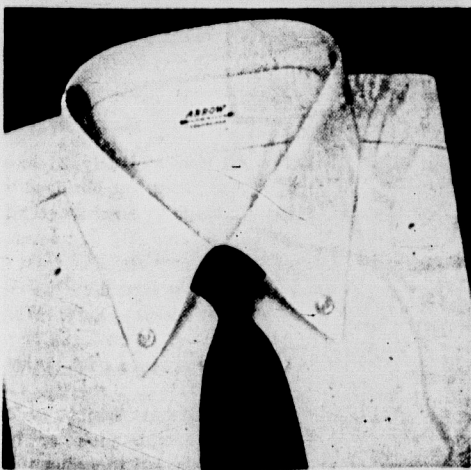
★ All Beef and Plenty Of It ★

MATTHEWS

221 Ann St.

It's a Landslide! Arrow "Oxfords" Voted Style Kings

Large majority of collegians favor trim good looks of Arrow "Gordon Dover Button-down"

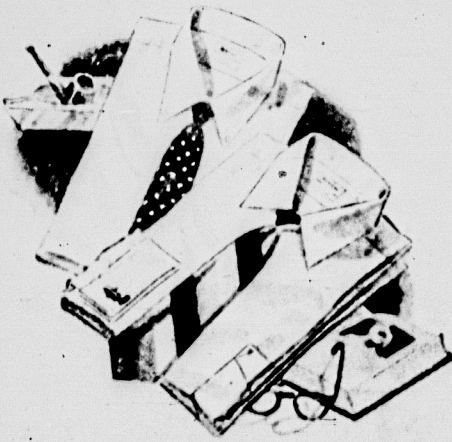


"Lasting good looks" was the main reason cited for the overwhelming popularity of Arrow Oxfords. These fine shirts... which retain their fresh good looks all day long... are available at all Arrow dealers—in white or colors.

ARROW
TRADE MARK

Show off your style know-how in Arrow White Shirts

newest, smartest collar styles 3.95 up



Come in... and pick your Arrow whites in the collar styles that do the most for your appearance. We have a terrific selection for you—button-downs, rounded-points, wide-spreads... all your tried-and-true Arrow style favorites, and a few new ones you really ought to try. Every shirt impeccably tailored of fine "Sanforized" fabric that won't shrink more than 1%. See us today for your Arrow whites.

h
LANSING AND
EAST LANSING

Lucon STARTS TODAY

THE GREATEST AMERICAN DRAMA SINCE "GONE WITH THE WIND!"
A famous best-seller blazes across the screen in Glorious Trucolor!
Shown at 1:25 - 3:30 - 5:40 - 7:50 - 10:00

JUBILEE TRAIL

HERBERT J. YATES presents
starring
VERA RALSTON · JOAN LESLIE · FORREST TUCKER
JOHN RUSSELL · RAY MIDDLETON · PAT O'BRIEN
with BUDDY BAER · JIM DAVIS · BARTON MACLANE
Screenplay by BRUCE MANNING · Based on the Novel by GWEN BRISTOW
Associate Producer and Director JOSEPH INMAN KANE
PLUS
CARTON & NEWS



Displaying trophies for the "Junior 500" on May 1 are Larry Denney, publicity chairman, and Dick Voss, general chairman of the event.

Lambda Chi Alpha will sponsor the annual derby around Circle Drive.

'Junior 500' Contest Set For May 15

"Junior 500" will dominate the Circle Drive scene May 15, when Lambda Chi Alpha presents its annual pushcart derby.

All men's living units will enter their homemade pushcarts in the 2,000-yard race around Circle Drive. Each unit will have a coed sponsor.

The race will be run in heats by teams of five relay runners and a driver. The first and second place winners in each heat will race in the finals.

The cars will be designed either for speed or for humor. The humorous carts will be judged on appearance and ability to complete the course.

As in previous years, President John A. Hannah will be starter for the Derby, and Dean of Students Tom King will be flagman. Spectators' bleachers and a tower will be erected in front of the Women's Gym, starting point of the race. A timer, announcer and spotter will be stationed in the tower to broadcast the progress of the race. Position of the cars will be relayed to the tower by a pace car.

A trophy will be awarded to the entries placing first, second and third in speed and humor.

Living units entered are: Alpha Tau Omega, Delta Chi, Sigma Nu, Sigma Alpha Epsilon, Theta Chi, Delta Tau Delta, Kappa Sigma, Phi Kappa Sigma, Delta Sigma Phi and Zeta Beta Tau.

Others include Psi Upsilon, Delta Upsilon, Delta Sigma Phi, Phi Kappa Tau, Phi Kappa Phi, Alpha Epsilon Pi, Alpha Phi Alpha, Theta Sigma and Alpha Chi Sigma.

Dorms and co-ops in the race are: West Shaw, East Shaw, Phillips, Snyder, Butterfield, Ellsworth House and Asher House.

M.C. Named For 'Fling' By Seniors

Vaughn Monroe To Sing at Dance

By CANDIA LAYTON

Students of the sophomore class have elected Vaughn Monroe as the M.C. for the "Fling" which will be held at the Union Ticket Office on May 12.

Monroe, who is a senior at the University of Michigan, will be the first M.C. to be elected by the students.

He will be the first M.C. to be elected by the students. He will be the first M.C. to be elected by the students.

He will be the first M.C. to be elected by the students. He will be the first M.C. to be elected by the students.

He will be the first M.C. to be elected by the students. He will be the first M.C. to be elected by the students.

He will be the first M.C. to be elected by the students. He will be the first M.C. to be elected by the students.

He will be the first M.C. to be elected by the students. He will be the first M.C. to be elected by the students.

He will be the first M.C. to be elected by the students. He will be the first M.C. to be elected by the students.

He will be the first M.C. to be elected by the students. He will be the first M.C. to be elected by the students.

He will be the first M.C. to be elected by the students. He will be the first M.C. to be elected by the students.

He will be the first M.C. to be elected by the students. He will be the first M.C. to be elected by the students.

He will be the first M.C. to be elected by the students. He will be the first M.C. to be elected by the students.

He will be the first M.C. to be elected by the students. He will be the first M.C. to be elected by the students.

He will be the first M.C. to be elected by the students. He will be the first M.C. to be elected by the students.

He will be the first M.C. to be elected by the students. He will be the first M.C. to be elected by the students.

He will be the first M.C. to be elected by the students. He will be the first M.C. to be elected by the students.

He will be the first M.C. to be elected by the students. He will be the first M.C. to be elected by the students.

He will be the first M.C. to be elected by the students. He will be the first M.C. to be elected by the students.

Two Trains

(Continued from Page 1)

After calling the fire department, Brooks attempted to put out the flames with a fire extinguisher, but was unsuccessful.

Two fire trucks from Williamsport, one from Lansing township, three from Meridian township and one from the John Bean Division Fire Machine, Lansing Chemical Corp., were at the scene of the fire.

State Fire Marshal Arnold Renner attributed the cause of the fire to sparks from a corn sheller. He said that stones or a piece of steel probably got into the sheller, causing the sparks.

Within an hour after the blaze was discovered, the elevator was put out of service. Firemen were present until 3:30, extinguishing the flames.

The elevator was covered by insurance, Renner said. A wooden structure with a sheet metal frame replaced the elevator was 23 to 24 feet high. Police estimated its height as equivalent to a three-story building.

Schine

(Continued from Page 1)

Jenkins' question about Anastas' whereabouts, he was at the Monday night restaurant meeting or not, was part of an effort to find out just what happened to the Schine Stevens' photograph and how the colonel got logged out.

Schine said he just couldn't say for sure whether Anastas was at the restaurant get together, though he said at one point he "bet" Anastas was not there.

Schine explained he wanted to know to advise him whether he ought to have a lawyer with him in further testimony. He'll be back on the witness stand this morning at 9:30.

Policies

(Continued from Page 1)

would open the door to all students and the whole purpose of contracts would be defeated."

Students who feel they must break their contracts because of financial difficulty are offered employment that will cover the cost of their meals at least, Foster said. Another solution for this problem is a student loan, he said.

In the fall 225 students applied to break dorm contracts and 60 were refused. Winter term there were 200 applications and again 60 were denied.

Denial to sororities, fraternities and men's cooperatives are included in the figure.

In a letter to these organizations, Foster repeated the ruling on taking students from dorms in the middle of a school year. Each house is allowed two releases a term, or three winter term and none spring term.

This practice was started back in the days of quonsets, when living conditions were not as good and it was the desire of MSC to furnish the best possible accommodations, Foster said. Previously, no releases were allowed.

The permission to move to a fraternity or similar organization is given after a written request is received from an officer of the organization and a properly signed application from the resident wishing to be released is received.

Automatic releases are given if a student must leave school for academic reasons, such as practice teaching or if a student marries. Although these releases are automatic, Foster said, the application for release must still be completed.

The Mackinac Straits Bridge, which will link Michigan's Upper and Lower peninsulas, will be completed in 1957 and will be the world's longest continuous over-water bridge.

Mauri Sonnenberg

TONIGHT'S

Your Final Fling

ALL-COLLEGE DANCE

SEMI-FORMAL

9 'till 1

FEATURING

Vaughn Monroe

&

Freddie Dale Orchestra

&

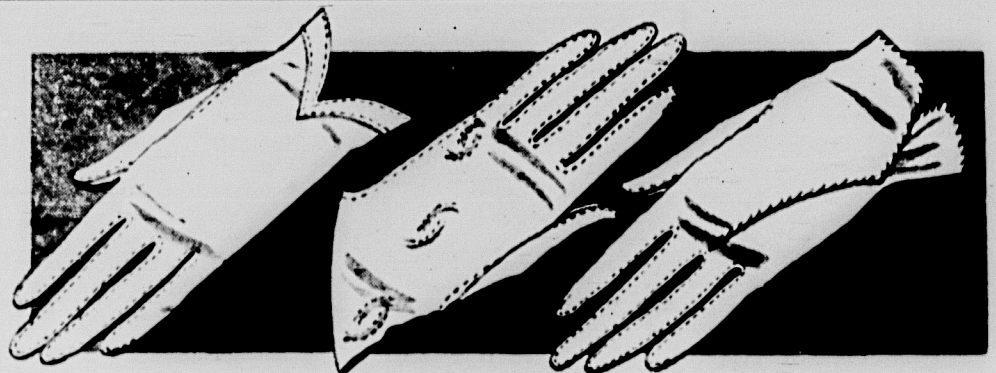
Campus Driving Permission

&

Two-O'clock Permission

Tickets On Sale In Union Ticket Office

& At Auditorium

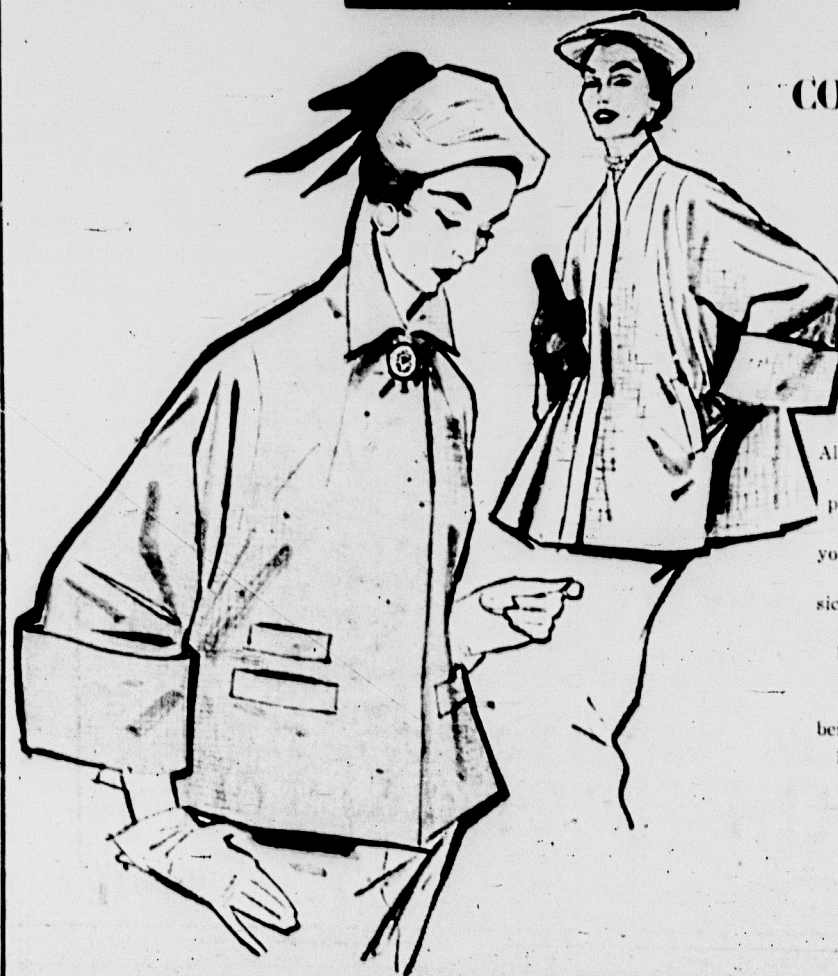


GLOVE SALE - \$2

HANDSEWN DOUBLE-WOVEN COTTON SPRING SHORTIES

MADE TO SELL FOR MUCH MORE! Impeccably tailored, beautifully finished dress and classic shortie gloves... priced unusually low for such superb quality and fine workmanship. You'll want several pairs in assorted colors and styles to round out your glove wardrobe and for gift-giving. White, beige, chamois or navy.

Jacobson's



COVER COAT STORY IN BRIEF

All wool and only 25 inches long, our abridged topers go to great lengths for versatility... covering your every costume, from the most formal to the classically casual. Left: White, beige, yellow aqua or red basketweave fob-pocketed shortie, \$22.95. Right: White, yellow, beige, coral, pink or blue pebble twist cordigan \$25. Sizes 8 to 18.

Coat Salon

STATEMENT OF OPERATIONS

FALL AND WINTER TERMS

ALL COLLEGE STUDENT GOVERNMENT

	Amount Budgeted	Transfers	Income	Expense	Balance
A. Student Fund - Total Budgeted \$10,000.00 - Net Expense \$8,011.39					
1. Student Fund - Total Budgeted \$10,000.00	10,000.00				10,000.00
2. Student Fund - Total Expense \$8,011.39				8,011.39	1,988.61
3. Student Fund - Total Balance \$1,988.61					1,988.61
B. Student Fund - Total Budgeted \$5,000.00 - Net Expense \$3,520.01					
1. Student Fund - Total Budgeted \$5,000.00	5,000.00				5,000.00
2. Student Fund - Total Expense \$3,520.01				3,520.01	1,479.99
3. Student Fund - Total Balance \$1,479.99					1,479.99
C. Student Fund - Total Budgeted \$5,000.00 - Net Expense \$3,520.01					
1. Student Fund - Total Budgeted \$5,000.00	5,000.00				5,000.00
2. Student Fund - Total Expense \$3,520.01				3,520.01	1,479.99
3. Student Fund - Total Balance \$1,479.99					1,479.99
D. Student Fund - Total Budgeted \$5,000.00 - Net Expense \$3,520.01					
1. Student Fund - Total Budgeted \$5,000.00	5,000.00				5,000.00
2. Student Fund - Total Expense \$3,520.01				3,520.01	1,479.99
3. Student Fund - Total Balance \$1,479.99					1,479.99
E. Student Fund - Total Budgeted \$5,000.00 - Net Expense \$3,520.01					
1. Student Fund - Total Budgeted \$5,000.00	5,000.00				5,000.00
2. Student Fund - Total Expense \$3,520.01				3,520.01	1,479.99
3. Student Fund - Total Balance \$1,479.99					1,479.99
F. Student Fund - Total Budgeted \$5,000.00 - Net Expense \$3,520.01					
1. Student Fund - Total Budgeted \$5,000.00	5,000.00				5,000.00
2. Student Fund - Total Expense \$3,520.01				3,520.01	1,479.99
3. Student Fund - Total Balance \$1,479.99					1,479.99
G. Student Fund - Total Budgeted \$5,000.00 - Net Expense \$3,520.01					
1. Student Fund - Total Budgeted \$5,000.00	5,000.00				5,000.00
2. Student Fund - Total Expense \$3,520.01				3,520.01	1,479.99
3. Student Fund - Total Balance \$1,479.99					1,479.99
H. Student Fund - Total Budgeted \$5,000.00 - Net Expense \$3,520.01					
1. Student Fund - Total Budgeted \$5,000.00	5,000.00				5,000.00
2. Student Fund - Total Expense \$3,520.01				3,520.01	1,479.99
3. Student Fund - Total Balance \$1,479.99					1,479.99
I. Student Fund - Total Budgeted \$5,000.00 - Net Expense \$3,520.01					
1. Student Fund - Total Budgeted \$5,000.00	5,000.00				5,000.00
2. Student Fund - Total Expense \$3,520.01				3,520.01	1,479.99
3. Student Fund - Total Balance \$1,479.99					1,479.99
J. Student Fund - Total Budgeted \$5,000.00 - Net Expense \$3,520.01					
1. Student Fund - Total Budgeted \$5,000.00	5,000.00				5,000.00
2. Student Fund - Total Expense \$3,520.01				3,520.01	1,479.99
3. Student Fund - Total Balance \$1,479.99					1,479.99
K. Student Fund - Total Budgeted \$5,000.00 - Net Expense \$3,520.01					
1. Student Fund - Total Budgeted \$5,000.00	5,000.00				5,000.00
2. Student Fund - Total Expense \$3,520.01				3,520.01	1,479.99
3. Student Fund - Total Balance \$1,479.99					1,479.99
L. Student Fund - Total Budgeted \$5,000.00 - Net Expense \$3,520.01					
1. Student Fund - Total Budgeted \$5,000.00	5,000.00				5,000.00
2. Student Fund - Total Expense \$3,520.01				3,520.01	1,479.99
3. Student Fund - Total Balance \$1,479.99					1,479.99
M. Student Fund - Total Budgeted \$5,000.00 - Net Expense \$3,520.01					
1. Student Fund - Total Budgeted \$5,000.00	5,000.00				5,000.00
2. Student Fund - Total Expense \$3,520.01				3,520.01	1,479.99
3. Student Fund - Total Balance \$1,479.99					1,479.99
N. Student Fund - Total Budgeted \$5,000.00 - Net Expense \$3,520.01					
1. Student Fund - Total Budgeted \$5,000.00	5,000.00				5,000.00
2. Student Fund - Total Expense \$3,520.01				3,520.01	1,479.99
3. Student Fund - Total Balance \$1,479.99					1,479.99
O. Student Fund - Total Budgeted \$5,000.00 - Net Expense \$3,520.01					
1. Student Fund - Total Budgeted \$5,000.00	5,000.00				5,000.00
2. Student Fund - Total Expense \$3,520.01				3,520.01	1,479.99
3. Student Fund - Total Balance \$1,479.99					1,479.99
P. Student Fund - Total Budgeted \$5,000.00 - Net Expense \$3,520.01					
1. Student Fund - Total Budgeted \$5,000.00	5,000.00				5,000.00
2. Student Fund - Total Expense \$3,520.01				3,520.01	1,479.99
3. Student Fund - Total Balance \$1,479.99					1,479.99
Q. Student Fund - Total Budgeted \$5,000.00 - Net Expense \$3,520.01					
1. Student Fund - Total Budgeted \$5,000.00	5,000.00				5,000.00
2. Student Fund - Total Expense \$3,520.01				3,520.01	1,479.99
3. Student Fund - Total Balance \$1,479.99					1,479.99
R. Student Fund - Total Budgeted \$5,000.00 - Net Expense \$3,520.01					
1. Student Fund - Total Budgeted \$5,000.00	5,000.00				5,000.00
2. Student Fund - Total Expense \$3,520.01				3,520.01	1,479.99
3. Student Fund - Total Balance \$1,479.99					1,479.99
S. Student Fund - Total Budgeted \$5,000.00 - Net Expense \$3,520.01					
1. Student Fund - Total Budgeted \$5,000.00	5,000.00				5,000.00
2. Student Fund - Total Expense \$3,520.01				3,520.01	1,479.99
3. Student Fund - Total Balance \$1,479.99					1,479.99
T. Student Fund - Total Budgeted \$5,000.00 - Net Expense \$3,520.01					
1. Student Fund - Total Budgeted \$5,000.00	5,000.00				5,000.00
2. Student Fund - Total Expense \$3,520.01				3,520.01	1,479.99
3. Student Fund - Total Balance \$1,479.99					1,479.99
U. Student Fund - Total Budgeted \$5,000.00 - Net Expense \$3,520.01					
1. Student Fund - Total Budgeted \$5,000.00	5,000.00				5,000.00
2. Student Fund - Total Expense \$3,520.01				3,520.01	1,479.99
3. Student Fund - Total Balance \$1,479.99					1,479.99
V. Student Fund - Total Budgeted \$5,000.00 - Net Expense \$3,520.01					
1. Student Fund - Total Budgeted \$5,000.00	5,000.00				5,000.00
2. Student Fund - Total Expense \$3,520.01				3,520.01	1,479.99
3. Student Fund - Total Balance \$1,479.99					1,479.99
W. Student Fund - Total Budgeted \$5,000.00 - Net Expense \$3,520.01					
1. Student Fund - Total Budgeted \$5,000.00	5,000.00				5,000.00
2. Student Fund - Total Expense \$3,520.01				3,520.01	1,479.99
3. Student Fund - Total Balance \$1,479.99					1,479.99
X. Student Fund - Total Budgeted \$5,000.00 - Net Expense \$3,520.01					
1. Student Fund - Total Budgeted \$5,000.00	5,000.00				5,000.00
2. Student Fund - Total Expense \$3,520.01				3,520.01	1,479.99
3. Student Fund - Total Balance \$1,479.99					1,479.99
Y. Student Fund - Total Budgeted \$5,000.00 - Net Expense \$3,520.01					
1. Student Fund - Total Budgeted \$5,000.00	5,000.00				5,000.00
2. Student Fund - Total Expense \$3,520.01				3,520.01	1,479.99
3. Student Fund - Total Balance \$1,479.99					1,479.99
Z. Student Fund - Total Budgeted \$5,000.00 - Net Expense \$3,520.01					
1. Student Fund - Total Budgeted \$5,000.00	5,000.00				5,000.00
2. Student Fund - Total Expense \$3,520.01				3,520.01	1,479.99
3. Student Fund - Total Balance \$1,479.99					1,479.99

MICKI McBRIDE

Treasurer

Advertisement

Barbara H. cap to Mary

How 55

Wom Mem

The red tasseled caps and 20 coeds, at May Morning Although

Soph Select At D

Thirty-five met member Saturday night Soph Dance in

New member more men's h Augustine, Bae Barnes, R Barney, Battle Mason, James Robert Casado Clifford, East n Angelo, Barn nard Liron, Ne

More freshmen honored are Jamestown, N tel Bayport, Penton Harbo warth Detroit les, Detroit, Grosse Pointe East Lansing Lounds, Wil Donald Mar III

Other new s Morn, V Nosen, Iron Olson, Cadbi nable Creek, Lanning, Rob Lanning, Isaac n Ohio, K nate Green n Donald R ng, Gordon ng, Sterling James Tennisw n Trecka, Acher, Tec Acher, Gary, Acher, Wil The first me peters and d n be at 8:30 n Union.