

# BEAUTY

Miss is often called the "most beautiful campus in the world." But it's no easy task to keep it looking "just right," especially with all the construction that's going on. For a story on the men responsible for keeping it looking nice, see page 3.

DL 48—No. 51

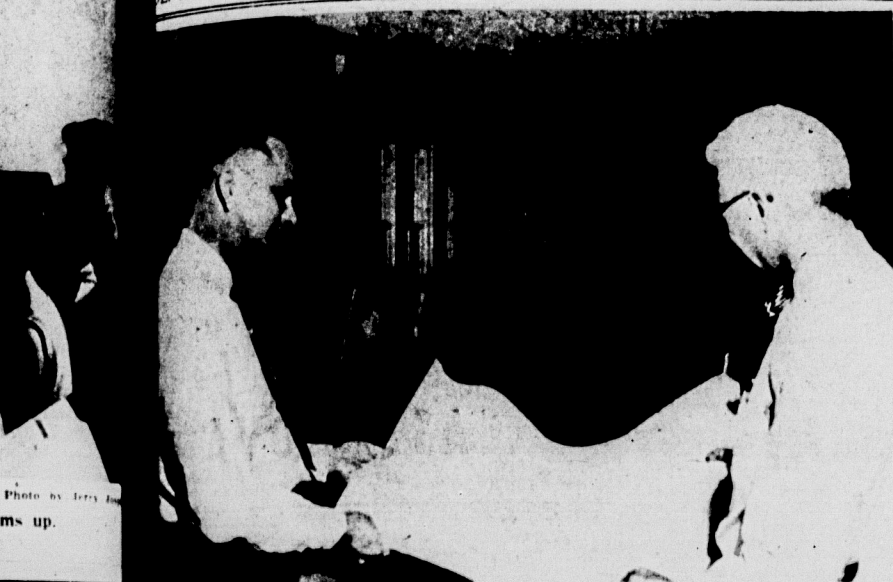
# Michigan State News

EAST LANSING, MICHIGAN—THURSDAY, JULY 12, 1956

PRICE 5 CENTS

## COED ENGINEER

Detroit junior Mary Ann Hafke is the only coed enrolled in the College of Engineering. But she's not planning to be a career woman. For a story on some of her adventures as the only woman in a sea of men, see page 3.



Union manager Mike Dmochowski, left, and Russell L. Villars, bookstore manager, look over blueprints of the store which is being enlarged and converted into a self-service operation.

## Self-Service Being Installed

## Bookstore Getting Face Lifting

By CYNTHIA EATON  
Students returning fall term will find the Union Bookstore completely re-organized.

Construction for the complete remodeling of the store began last week and is expected to be completed by August 15.

Upon completion, students will be able to purchase textbooks and supplies in a self-service manner. Textbooks will be placed in sections according to schools. Under each plainly marked section individual course names will be labeled.

Students may go to these sections and pick up desired books. Check out booths will be located at both entrances. Supplies will also be included in the self-service plan.

Clerks will be available to help customers in the clothing section.

Complaints from students regarding long lines and excessive waiting were instrumental in the adoption of the self-service system.

The new plan is expected to alleviate the line and waiting problems, particularly during registration week. Russell Villars, bookstore manager, said.

During the construction period the east entrance of the Union (the door facing the Home Ec Bldg.) will be locked and students are asked to use either the entrance facing Grand River or the entrance on Circle drive.

A temporary book store has been set up in the Concourse on the east side of the Union desk.

## Top Nursing Educators Set Lectures Here

Two distinguished lecturers in nursing education will be on campus this summer according to Miss Florence C. Kempf, head of the department of nursing education.

Mrs. Henrietta Adams Loughran, dean of the School of Nursing at the University of Colorado, will lecture July 16-20.

Elizabeth Kerr Porter, dean of the Frances Payne Bolton School of Nursing, Western Reserve University, will lecture July 23-Aug. 10.

Dean Loughran was director of the University of Colorado nursing school from 1942 until 1949, at which time she became Jean A. travel fellowship from the Rockefeller Foundation.

She has been a visiting lecturer and advisor to several American and Canadian nursing schools, and a nursing consultant to the U.S. Public Health Service.

Prior to becoming dean of Western Reserve in 1953, Dean Porter was professor of nursing and director of advanced programs in nursing education. She has been a part-time lecturer at Johns Hopkins University, and formerly was professor of nursing at the University of Pennsylvania.

## Record Dances Slated Every Saturday Night

Union Board will hold a series of record dances every Saturday night during summer term, Dean Vanne, summer Board president, announced Wednesday.

The dances, stag or drag, will be held from 9 p.m.-12 midnight in the Union Ballroom.

# Student Park 'Parties' Hit

## Official Expands Remarks

### Says He May Have 'To Swallow' Words

Meridian township's representative to the Ingham County Board of Supervisors said today he has "never seen any MSU student drinking at Lake Lansing" although he had called them "drunken bums" at the supervisors' July meeting in Mason Tuesday.

Bernard Ward said he was of the opinion the resolution passed by the supervisors banning drinking in all county parks was "unenforceable."

He had proposed the resolution which originally called for banning drinking in the Lake Lansing park. It was later amended to include a drinking in all county parks.

Asked why he called students "drunken bums" if he had never seen any of them drinking, Ward replied:

"I can't say why I said it. I know I'll probably have to swallow those words."

He said he was not angry when he made the statement and will not apologize for it.

The supervisor said he was "driven" to proposing the drinking ban by complaints of Lake Lansing residents.

"Several citizens have told me various stories about the college kids," Ward said. "I've had so many complaints especially on weekends that I was driven to this resolution."

"The resolution ought to have a moral value," he added. "No drinking" signs will be put up and they ought to eliminate drinking eventually."

Asked to elaborate on stories about MSU students allegedly told him by lake area residents, Ward said:

"My deputy sheriff told me he would not go out there any more to arrest anyone because if he did he would be surrounded by students who would threaten him."

The supervisor said the deputy See OFFICIAL, Page 6

## Zoologist Wins Fulbright Award

An MSU Zoologist received word last week he has been awarded a Fulbright scholarship for advanced study in Australia during the 1956-57 academic year.

Joseph G. Engemann, who expects to receive an M.A. in zoology at the end of the summer, will study at the University of Tasmania. He has served as a temporary instructor in zoology since March and prior to that was a graduate assistant.

It joins. Better visibility is the reason for the change at this spot. A full stop sign will replace the "yield right of way" sign.

On Michigan Avenue where Beal Street intersects, between-lanes islands are being repositioned to allow more room for entering and exiting traffic.

Vehicles will no longer be permitted to enter the campus from Beal Street proper. The space between islands is now one-way for exiting traffic. All

other cars must continue to Center Street and return in an eastbound direction in order to gain entrance to the campus at this spot.

Engineers could give no date for completion of the projects but said work will continue for several more weeks.

Construction is also underway at the back door of MSU's new museum, housed in the old library.

The grounds department is providing room for a parking



Bob Skinner, John Jacobson and Ellen Harrington rehearse a scene from the forthcoming summer term play.

## 'Teaspoon of Love' Begins in Two Weeks

## Award Winners Top Term Play Cast

By DONN SHELTON  
State News Editor

A pair of "Sparty" award winners head the cast of the summer term play, "Teaspoon of Love," to be presented in two weeks, July 26-28.

Carol Larsen, voted the best supporting actress in the 1955-56 student productions, and John Jacobson, award winner as the best actor, head the nine-person cast of the modern day love story.

The awards are presented annually by the Spartan magazine.

Miss Larsen, a junior from Detroit, plays the female lead as Miriam Granoff, who finally finds her own niche after struggling her motherless sister and brothers through life.

Jacobson, a Fort Huron senior, is cast as "Benny," a bumbling middle-aged handyman who needs more than Miriam's prompting to woo a girl.

The male lead, the role of "Doc" Fisher, is handled by Paul Golub, a senior from Schenectady, N.Y. "Doc" is a middle-aged hospital intern who falls in love with Miriam and becomes another of her well-managed victories.

The villainous role of Miriam's thick-skulled sister Flo is played by Caroline (Cot) Rhymes with pine) Conner, a Lansing grad student.

Miriam's more understanding sister Selma is played by Jean Kallivoda, East Lansing senior who recently was named "Miss Michigan."

Ellis joined the department in 1946. He was promoted to sergeant in 1951 and lieutenant in 1954.

Two patrolmen have also resigned recently, Bernitt said. Richard A. Atkins, a June graduate of police administration, will enter military service.

Jack Pardee resigned to take a position with the state Department of Agriculture.

Ellis joined the department in 1946. He was promoted to sergeant in 1951 and lieutenant in 1954.

Two patrolmen have also resigned recently, Bernitt said. Richard A. Atkins, a June graduate of police administration, will enter military service.

Jack Pardee resigned to take a position with the state Department of Agriculture.

Ellis joined the department in 1946. He was promoted to sergeant in 1951 and lieutenant in 1954.

Two patrolmen have also resigned recently, Bernitt said. Richard A. Atkins, a June graduate of police administration, will enter military service.

Lansing" in the annual "Miss America" contest.

Dan Conell, a Bay City junior, plays the other member of the Granoff brood, Miriam's brother Sander.

Miss Patterson, the hospital disciplinarian, is played by Ellen

The male lead, the role of "Doc" Fisher, is handled by Paul Golub, a senior from Schenectady, N.Y. "Doc" is a middle-aged hospital intern who falls in love with Miriam and becomes another of her well-managed victories.

The villainous role of Miriam's thick-skulled sister Flo is played by Caroline (Cot) Rhymes with pine) Conner, a Lansing grad student.

Miriam's more understanding sister Selma is played by Jean Kallivoda, East Lansing senior who recently was named "Miss Michigan."

Ellis joined the department in 1946. He was promoted to sergeant in 1951 and lieutenant in 1954.

Two patrolmen have also resigned recently, Bernitt said. Richard A. Atkins, a June graduate of police administration, will enter military service.

Jack Pardee resigned to take a position with the state Department of Agriculture.

Ellis joined the department in 1946. He was promoted to sergeant in 1951 and lieutenant in 1954.

Two patrolmen have also resigned recently, Bernitt said. Richard A. Atkins, a June graduate of police administration, will enter military service.

Jack Pardee resigned to take a position with the state Department of Agriculture.

Ellis joined the department in 1946. He was promoted to sergeant in 1951 and lieutenant in 1954.

Two patrolmen have also resigned recently, Bernitt said. Richard A. Atkins, a June graduate of police administration, will enter military service.

Jack Pardee resigned to take a position with the state Department of Agriculture.

Ellis joined the department in 1946. He was promoted to sergeant in 1951 and lieutenant in 1954.

Two patrolmen have also resigned recently, Bernitt said. Richard A. Atkins, a June graduate of police administration, will enter military service.

## Drinking Prohibited By County

### Supervisor Calls Students 'Bums'

By GENE RITZINGER  
State News Managing Editor

MSU students who party at Lake Lansing came in for some sharp criticism Tuesday at a meeting of the Ingham County Board of Supervisors.

The charges resulted in a ban on drinking in all Ingham County parks.

Supervisor Bernard Ward of Meridian township and the Lake Lansing county park is being "over-run with Michigan State University students, most with beer bottles in their hands and most of them slightly inebriated."

Ward told his colleagues that with all "these drunken bums" crowding the park, other people were unable to enjoy its facilities.

Ward's outburst came during discussion of a resolution introduced by him which would ban drinking of intoxicants in the Lake Lansing park.

The resolution was passed after an amendment banning drinking of intoxicants in all county parks was added.

Ingham County Sheriff William P. Barnes, who attended the supervisors' meeting said Wednesday he "didn't think this beer drinking proposition is as serious as it has been made out to be."

Sheriff Barnes said he has gotten "a few" complaints about beer-drinking students from Lake Lansing residents in recent weeks.

Most complaints, he said, were angered because students "littered-up" the beach and picnic grounds with empty beer cans and because of "the way they drove off" after leaving the beach.

The sheriff said he has paid several visits to the park to observe students' behavior and has "always found them to be acting like a normal bunch of kids who like a beer or two once in awhile."

He said he has never observed anything "immoral."

The Lake Lansing beach, he said, "is a small one, and when you get a hundred or so kids out there it looks like a wild drinking party is going on when actually they're only having a little fun."

The sheriff said his office "doesn't get complaints" about students' behavior from citizens frequenting any of the other county parks.

He said the problem at Lake Lansing was almost exclusively one of careless discarding of beer cans and reckless driving. Complaints about noise were few.

"The problem is not nearly so big now as it is during the first warm days of spring," the sheriff said.

Dean King said Wednesday his office had only been contacted once about the middle of May, by the sheriff regarding general student behavior. It is a policy of his office to work with local law enforcement agencies on specific violation cases.

## Staff Member To Leave MSU

Dr. Herbert Lee Williams, associate professor of journalism, announced this week he will leave MSU to head a new department of journalism at Memphis State College, Memphis, Tenn.

Williams, a native of Alabama, was a researcher for former President Harry S. Truman's memoirs.

The professor will assume his new post Sept. 1. He has been a member of the MSU faculty since January, 1955.

Williams will hold a regular editorial position with the Commercial Appeal, a morning daily newspaper in Memphis in connection with his administrative duties at Memphis State.



Jean Kallivoda puts beauty contests behind her and settles down to learning her lines for her part in "Teaspoon of Love."

Harrington, a Detroit grad student, while Bob Skinner, Mr. Vernon N.H. grad student, portray Dr. Pringle, who holds the answers to some questions about "Doc" Fisher's past.

The play is being directed by Marvin Phillips, speech instructor.

Mrs. Pauline Schmoecker, wife of an MSU economics professor, wrote the play which will be presented for the first time anywhere on the 26th.

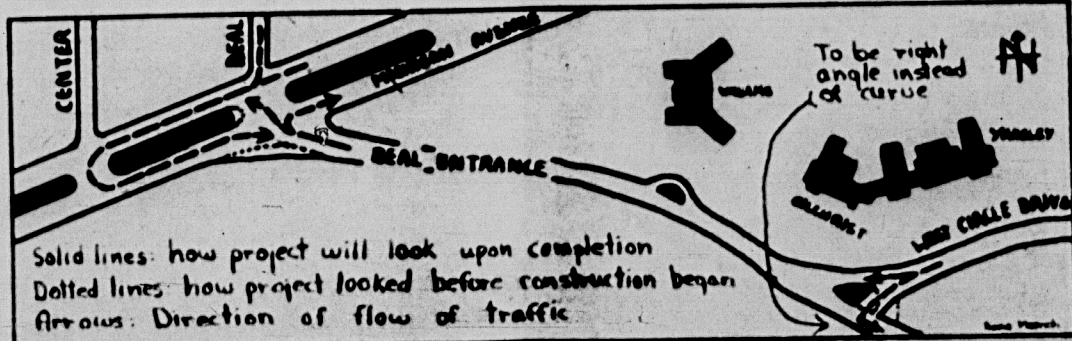
Mrs. Schmoecker has done previous work in the field of dramatists, both on stage and behind the scenes.

The production will be presented in the Union Ballroom. Tickets for each of the three performances will be sold at the door.

## Engineering Dean Leads Honor Society

Dr. John D. Hyder, dean of the College of Engineering, was recently elected national president of Eta Kappa Nu, electrical engineering honor society.

## Street Projects Ironing Out Bad Curves



Solid lines: how project will look upon completion  
Dotted lines: how project looked before construction began  
Arrows: Direction of flow of traffic

By DAVID STROUD  
MSU grounds department and state highway department working parties are giving the campus and the area along its north boundary a face lifting.

Two projects, both on the Beal Street drive, are underway to mitigate hazardous traffic conditions.

Opposite Gitchrist Hall the cut-in for eastbound vehicles will be changed from a curved course to one which is perpendicular to the river and the lane

To be right angle instead of curve

Beal Entrance

Beal Street

Beal Street

Beal Street

Beal Street

Beal Street



## Michigan State News

Read Daily by MSU's 19,000 Students and Faculty

The Michigan State News is published by students without direct faculty supervision. It is not the official voice of the university or of the student body, but while seeking to serve the best interests of both, stands ready to battle any move which would drive a wedge between the two, whether it comes from within the university or from outside. Member of the Associated Press, Inland Daily Press, Intercollegiate Press Association and Associated College Press.

Vol. 48—No. 51 Thursday, July 12, 1956 Page Two

# A Case of the Majority Suffering for the Few

It is an established precept of justice that the few shall not suffer for the mistakes of the many. But a few—what appears to be, in fact, a very few—persons have brought about a situation that will cause long suffering to a great many people.

Tuesday afternoon the Ingham County Board of Supervisors chose to legislate against the many because of the few by banning all drinking in its county parks. The reason set forth by the sponsors of the bill was that there were too many "MSU students" invading the parks in drunken parties.

More specifically, it was noted, there were too many "drunken bums" at the Lake Lansing county park. The offenders were marked as MSU students by the stickers on their cars, the sponsoring county supervisor stated.

The picture of huge gangs of students staging drunken orgies at Lake Lansing is far out of focus. Ingham County Sheriff Willard P. Barnes said Wednesday it was only a handful of unthinking students who had brought the violent charge against the university student body.

And at that, the main areas of com-

## S'News Views

Ike's latest hospital trip cost him \$23.10, or about the cost of a new golf bag.

Wonder why, if it's so great to be a Greek, so many of the Greek groups perform under Latin mottos?

Parking meter income would more than double if the coin purpers were installed in the grill booths. Charging rent might also be a feasible proposition in some cases.

The Republicans are planning on a four-day convention—one day to "push" Ike and Nixon in and three days to list the reasons why.

A GOP campaign "task force" recently completed a fortnight of instruction to state leaders including, most probably, a glossary of medical terminology and a three step plan for better golf scores.

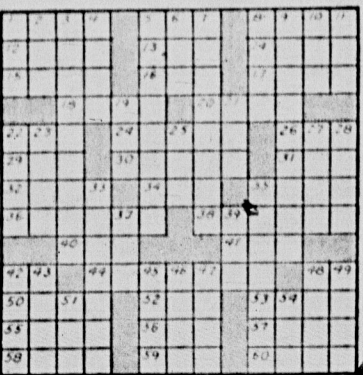
Farmers claim corn should be knee high by this time of July and Bermudas make it so much easier to measure.

Your Key to Better Values . . .

Campus Classifieds

## Crossword Puzzle

**ACROSS**  
1. Lumbermen's boots  
5. Through  
8. Donkey's cry  
12. Spoken  
13. Scotch explorer  
14. Unmanly  
15. Unaffected  
16. Grampus  
17. Foreboding  
18. Taunt  
20. New Zealand bird  
22. . . . Khan  
24. Purport  
26. Grab  
29. One-horse carriage  
30. View  
31. Malt drink



PAR TIME 22 MIN.

ANSWER

TO THIS PUZZLE

IS ON PAGE 4

DOWN

7. Calculated  
8. Forehead  
9. Cud chewing animals  
10. American humorist  
11. Desire  
12. Wrath  
13. Female name  
14. By birth  
15. Besides  
16. Endure  
17. Snake  
18. Ballad  
19. Japanese sash  
20. Dry  
21. Oriental food  
22. Greedy  
23. Biblical word  
24. Tissue  
25. "The Tent-maker"  
26. Spanish title  
27. Extremity

Your Key to Better Values . . .

Campus Classifieds

## Information

# This Week on Campus

TODAY

Student visit to research project, "Research in Home Management," 4 p.m., 401 Home E. Bldg., Dr. Elizabeth Wiegand and Dr. Alice C. Thorpe in charge.

Student visit to research project, "Dairy Cattle Nutrition and Feeding," (animals with rumen fistulas, or windows into stomachs), 4 p.m., Dairy Cattle Nutrition Research Barn behind main Dairy Barn across from Shaw Dormitory, Dr. C. A. Lassiter in charge.

Silk screen prints by Alma Goetsch, Art Bldg., A-7, South Campus.

FRIDAY

Student visit to research project, "Wood Machining, Preservation of Wood, Finishing and Packaging," 4 p.m., Forest Products Bldg., B-4 South Campus, Dr. Harold J. Rapael in charge.

Student visit to research project, "Developing Corn Hybrids," 4 p.m., Farm Crops Field Laboratory, southwest corner of Mt. Hope and Beaumont Roads, Dr. Elmer C. Beaumont and Dr. Kenyon T. Payne in charge.

Silk screen prints by Alma Goetsch, Art Bldg., A-7, South Campus.

Social Dance, Bob Berube's Orchestra, 8-10:30 p.m., Parlor C, Union, free to summer school students and guests upon presentation of fee card.

Movie, "Ugetsu," (Japanese), 8 p.m., Fairchild Theatre, 50 cents.

SATURDAY

Movie, "The Caine Mutiny," Mago cartoon, 8 p.m., Fairchild Theatre, 50 cents.

MONDAY

Student visit to research project, "Foods and Nutrition," 4 p.m., 102 Home E. Bldg., Dr. Wilma D. Brewer in charge.

Student visit to research project, "Vegetable Breeding," 4 p.m., Horticulture Farm (going south on Farm Lane, turn left on gravel road just beyond railroad tracks), Dr. Clinton E. Peterson in charge.

Student visit to research project, "Fly Control," 4 p.m., 352 Nat. Sci. Bldg., Dr. Herman King in charge.

Economics department lecture, "A Competitive Economy in a Non-Competitive America," Dr. Horace M. Gray, distinguished visiting professor, 4 p.m., 105 Berkeley.

College of Home Economics Research Colloquium, "Energy Requirements of Women," Wilma D. Brewer, and "Fatigue of Homemakers," Betty Wiegand, 4 p.m., 300 Home E. Bldg.

College of Education lecture, "Upward Thrust," Benjamin C. Wallis, Superintendent of

Schools, Chicago, 11 a.m.-12 noon, Fairchild Theatre; group meeting, 1:30-3 p.m., 32 Union.

Tour of WKAR-TV, 3:30-4:30 p.m., meet in foyer of WKAR-TV, Kalamazoo St., campus.

Student visit to Sanford Woodlot to see methods of collecting sap and making maple syrup, 4 p.m., meet at the edge of woods east of Shaw Hall and close to the Red Cedar River, Dr. Terrill D. Stevens in charge.

Student visit to research project, "Processing of Fruits and Vegetables," 4 p.m., 104A-Horticulture Bldg., Dr. Clifford L. Bedford in charge.

Square dance, Arden Peterson, caller, 8-10 p.m., Parlor C, Union, free to summer school students and guests upon presentation of fee card.

Summer Institute on the Far East lecture, "Japanese Activities in Southeast Asia," Dr. Robin A. Drews, Asst. Prof. Social Science, 8 p.m., library auditorium.

Summer Speech

Class in Session

The Eighth Annual High School Speech Institute is in session at Michigan State, Director of the conference is Dr. Frederick Alexander.

Approximately 40 students are enrolled to cover such subjects as forensics, the study of public speaking, radio and television, which will include the students into the nature of professional radio, television and dramatics. This course will also offer actual experience in the production of plays.

WEEK LONG EXHIBITS

Art exhibitions, MSU staff artists, Art Gallery, third floor, Union.

Summer Institute on the Far East Exhibit of Oriental Paintings and Art Objects, Art Gallery, third floor, Union.

Summer Institute on the Far East Exhibit of Rare Books on the Far East, library's show case on the first and second floors.

## Plan Awards For Seniors In Accounting

MSU is one of 40 U.S. colleges and universities selected to participate in a scholarship award program for outstanding accounting students beginning next fall.

Under the program a \$500 award will be made each year to an accounting student who has completed his junior year, MSU will present its first award early next fall, according to Professor Edward A. Gee, head of the department of accounting.

Sponsor of the awards is Haskins and Sells Foundation, Inc. of New York City. The Foundation's purpose in setting up the awards program is "to stimulate higher scholastic achievement among college students majoring in accounting and to encourage other promising students to specialize in this field."

Basic of the award is scholarship, apparent willingness to accept professional responsibilities, extra-curricular activities, and moral character. The winners will be selected by a committee of faculty members.

## Michigan State News

Published on class days Monday through Friday inclusive, during fall, winter and spring terms except days after holidays; weekly during summer term, and one special edition issue between summer and fall terms. Entered as second class matter under act of March 3, 1929 at the post office, East Lansing, Mich.

Mail subscriptions, payable in advance, for one term, \$2; for two terms, \$3.50; for three terms, \$5.00.

**Donn Shelton**  
**Dolores Dover**  
**Gene Ritzinger**  
**Bill Cope**  
**Chuck Pardon**  
**Rose Marie Moeck**

**Editor-in-Chief**  
**Business Manager**  
**Managing Editor**  
**Staff** Marge Mizels, Larry Reid, Cynthia Eaton, David Strand

## Campus Classifieds

ED 2-1511

Ext. 2615

Deadline 12 Noon

CLASSIFIED RATES  
Minimum 15 Words

1 day \$50  
2 days \$85  
3 days \$100  
4 days \$115  
5 days \$125

ADDITIONAL CHARGES  
For each word over 15 3c per day  
Charge for credit 15c

AUTOMOTIVE

COME IN TODAY AND ENTER THE GOLD LICENSE PLATE JACKPOT AT MALCOLM MILKS CHRYSLER-PLYMOUTH DEALER 1408 EAST MICHIGAN IV 4-7403

1956 MG-A SPORTS car. White red leather. Plus accessories. Only 1453 miles. Price, \$2100. Phone 2-4645

1950 FORD TUDOR sedan. Radio heater, good tires. Private owner. Phone IV 4-1640

1949 BUICK CONVERTIBLE. Dynamax, electric windows and seat. Good tires. Light grey body with red leather upholstery. Private owner. \$1850. ED 2-8497 after 6 p.m.

GUARANTEED WATER CLOCK jewelry and sundry repair work. Thompson Jewelry Company. Two stores to serve you. 223 M.A.C. Avenue, ED 2-7205 and Mall Court. Franchising Center, IV 5-0749

COMPLETE RADIO AND T.V. SERVICE T.V. ENGINEERS In basement of Fine's Music Store FRANDOR Phone IV 7-0030

TYPING THESE REPORTS, manuscripts, etc. Pick-up and delivery service. Reasonable rates. ED 7-7671

HAY RIDES SADDLE horses rented or boarded. Rowe Riding Ranch. Phone IV 5-4327

MEYER'S DELIVERY SERVICE Serving Lansing, East Lansing and MSU ED 2-4116

TWO RAY ALL channel antenna 40 foot telescopic mast. Tenna Mast. 1110-A University Mall. ED 2-0330

WANT A BARGAIN? We're the best "bargainers" in town. Demarest Furniture. 2021 East Michigan IV 7-5815

ATTENTION STUDENTS: NATIONALLY advertised diamond rings one-half off. Flein, Hamilton, Green watches. One-half off. Queen Jewelers. 114 North Washington

ROOM FOR RENT for one person. Linen and parking space. \$8 week. Mrs. Katherine Lutz, 218 North Harrison. ED 2-0131

NORMA NELSON, GEORGE HALPIN, DICK WOOD come to the State News office for two tickets to the Crest Drive-In.

HOUSING

PERSONAL

TRANSPORTATION

REDEEMER LUTHERAN CHURCH

ST. THOMAS AQUINAS CATHOLIC CHURCH

HOUSING

FURNISHED THREE ROOM cottage in attractive surroundings. Suitable for married couple. \$50 per month. Phone ED 2-6080

COMBINATION LIVING ROOM and bedroom. Newly decorated. State road, assistant preferred. Garage available. Six blocks from campus. Also single room men and full term begins. Newly decorated and carpeted. Parking. ED 2-1076 after 8 a.m. or 5 p.m.

ROOMS FOR MEN. Linen and parking furnished. \$5 per week. Convenient location. 235 Ann Street. 51

SINGLE OR DOUBLE rooms for men at summer rates. Cool. Good beds. Near campus. Phone ED 2-2573

SERVICE

STASZUK'S ABLE VAN LINES Local and long distance moving Agent of American Red Ball Coast to coast movers Phone for estimate IV 5-5807

Local and long distance moving Agent of American Red Ball Coast to coast movers Phone for estimate IV 5-5807

Local and long distance moving Agent of American Red Ball Coast to coast movers Phone for estimate IV 5-5807

Local and long distance moving Agent of American Red Ball Coast to coast movers Phone for estimate IV 5-5807

Local and long distance moving Agent of American Red Ball Coast to coast movers Phone for estimate IV 5-5807

Local and long distance moving Agent of American Red Ball Coast to coast movers Phone for estimate IV 5-5807

Local and long distance moving Agent of American Red Ball Coast to coast movers Phone for estimate IV 5-5807

Local and long distance moving Agent of American Red Ball Coast to coast movers Phone for estimate IV 5-5807

Local and long distance moving Agent of American Red Ball Coast to coast movers Phone for estimate IV 5-5807

Local and long distance moving Agent of American Red Ball Coast to coast movers Phone for estimate IV 5-5807

Local and long distance moving Agent of American Red Ball Coast to coast movers Phone for estimate IV 5-5807

Local and long distance moving Agent of American Red Ball Coast to coast movers Phone for estimate IV 5-5807

Local and long distance moving Agent of American Red Ball Coast to coast movers Phone for estimate IV 5-5807

Local and long distance moving Agent of American Red Ball Coast to coast movers Phone for estimate IV 5-5807

Local and long distance moving Agent of American Red Ball Coast to coast movers Phone for estimate IV 5-5807

Local and long distance moving Agent of American Red Ball Coast to coast movers Phone for estimate IV 5-5807

Local and long distance moving Agent of American Red Ball Coast to coast movers Phone for estimate IV 5-5807

Local and long distance moving Agent of American Red Ball Coast to coast movers Phone for estimate IV 5-5807

Local and long distance moving Agent of American Red Ball Coast to coast movers Phone for estimate IV 5-5807



m-m-m-m-m  
"That Casa Nova Pizza—"

... and ravioli, and spaghetti, and special sandwiches, and . . . everything. For delivery phone ED 2-6653

CASA NOVA

211 M.A.C.

Your Key to the Campus

Michigan State News

## Churches



A CORDIAL WELCOME AWAITS YOU AT  
EAST LANSING TRINITY CHURCH  
314 MAC AVENUE

A Bible Teaching Ministry in the Center of East Lansing  
F. EUGENE WILLIAMS, Pastor  
WORSHIP SERVICES 11:30 A.M. and 7:30 P.M.  
Dr. William Parlier, guest speaker for both worship services

OTHER SERVICES  
9:45 A.M. Sunday School, classes for all ages  
6:30 P.M. Trinity College Fellowship  
7:30 P.M. Prayer and Bible Study each Wednesday night

CHRISTIAN REFORMED 210 Marshall Lansing, Mich.

SerVICES — 10 a.m. and 7 p.m.  
YOUNG PEOPLE'S and SUNDAY SCHOOL — 11:30  
REV. H. DYKHOUSE

MICHIGAN AVENUE METHODIST  
1377 East Michigan Eaten Davis Wood

Morning Worship 10 a.m. Church School 9:30-10:45  
Nursery Open During Church

THE LUTHERAN CHURCH  
Missouri Synod  
MARTIN LUTHER CHAPEL  
411 Abbott Road  
College Chapel ED 7-0758  
Parsonage ED 2-4672  
Sunday Worship 9:30 a.m.  
Dr. Gerhard Munding, Pastor

ALL SAINTS  
UNIVERSITY EPISCOPAL CHURCH  
Rev. J. J. PORTER, Rector  
Sunday Services, 9:30 a.m. and 11:30 a.m.  
Church School, 9:30 a.m. - 11:30 a.m.  
11:30 a.m. - Morning Service  
All Saints Episcopal Church  
Church Office House 19-55

OKEMOS BAPTIST CHURCH  
NEAR THE CAMPUS  
Invites You  
Rev. John Books, Pastor  
Morning Service 10 a.m.  
Sunday School 11 a.m.  
Young People's 6:30 p.m.  
Sunday Night Service 7:30 p.m.  
Please call ED 7-7996 for a ride

Enjoy  
friendliness, good music, a church family

First Church of Christ Scientist  
11:00 a.m. - Sunday School  
11:00 a.m. - Morning Service  
Subject of the Lesson Series  
1:15 p.m.

College Lutheran Church  
Division A Area  
(two blocks north of Rockwell)  
ED 2-1031  
SERVICES — 9 a.m. and 11 a.m.  
SUNDAY SCHOOL — 9 a.m.  
Herbert C. Wall, Pastor

ST. ANDREWS' EASTERN ORTHODOX CHURCH  
DIVINE LITURGY  
Each Sunday 10 a.m.  
2827 N. East St., Lansing  
N. Washington Avenue bus stops  
a block from the Church hall  
All Eastern Orthodox Students  
Are Urged to Attend

ST. THOMAS AQUINAS CATHOLIC CHURCH  
405 Abbott Road  
Sunday Masses — 7, 8, 9, 10, 11  
Daily Masses — 6:45, 8:00 Confessions: Sat. 4-5:30; 7:20-8:30  
Daily Rosary for Students and Confession  
Fr. J. V. MacEachin, Pastor  
Fr. Robert E. Kavanaugh, Asst. — Fr. Donald Eder, Asst.  
Phone ED 2-5911



to look  
flower-fresh  
this summer

try a new  
hair style  
from

ELDA-DIANE

210 1/2 Abbott Road

NOW COOLED BY REFRIGERATION OPEN  
2 HITS! LUCON DAILY  
EAST LANSING • PHONE ED 2-8844 12:30 P.M.

HIT NO. 1 SHOWN 1:00 - 4:10 - 7:15 - 10:30

2ND BIG HIT! SHOWN 2:40 - 5:45 - 8:50

VIRGINIA MAYO GEORGE NADER

CONGO CROSSING

PETER LOHRE TECHNICOLOR

MICHAEL PAUL TONIO SELWART A UNIVERSAL INTERNATIONAL PICTURE

STARTS TUESDAY

They're biggest  
Laff Riot!

DEAN JERRY MARTIN LEWIS 3 RING CIRCUS

VISTAVISION

Bob Hope

Edie Foy

Edie Foy

Edie Foy

Edie Foy

# She's Alone But Happy in a Man's (?) World

## Engineering School Has One Coed

Detroit Junior Likes To Cook and Sew

MSU's only coed engineering major is not interested in being a career woman. She's just a homemaker at heart.

Says Detroit junior Mary Ann Hake, "I like to cook and sew as much as any other girl, but I prefer to major in engineering."

And the reason? "Because if I don't get a job, good pay, I can go home and be a homemaker."

How do her professors and classmates treat her?

"On opening day," says Miss Hake, "the professor addresses the class. He says, 'Welcome to the College of Engineering. I am Dr. C. C. Killingsworth, director.'"

At a freshman, it felt odd to be the only girl, but by now she is treated as "one of the guys."



State News Photo by Chuck Pardon  
Detroit Junior Mary Ann Hake, only coed in the College of Engineering, is used to being surrounded by men. She says professors treat her as "one of the guys."

## 'Demonstrates Greatest Improvement'

## Alumni Publication Wins Awards, National Honors

The Michigan State University Magazine has received two special awards and a 12th place national ranking among collegiate alumni magazines.

These honors were announced at the 41st general conference of the American Alumni Council recently at French Lick, Ind. Some 141 colleges and universities entered alumni magazines in the competition.

Editor Robert L. Yelvington was on hand to hear the magazine cited for:

1. Demonstrating the greatest improvement in an alumni magazine during the past year; and
2. Publication of a series of eight features on the arts designed to inform and educate alumni readers.

Under Yelvington's direction the publication last September underwent a complete change of format and was considerably expanded.

In competition for the Sibley Award, which goes annually to the top "magazine of the year," the magazine won 12th place and was one of three granted honorable mention.

Only the University of Chicago Magazine among District 5 publications (Michigan, Ohio, Indiana, Illinois, Minnesota and Wisconsin) ranked higher in evaluation. It received fifth place behind the winning Johns Hopkins Magazine.

Famous Speedwriting System—Use ABC's. Employ no signs, no symbols, no machines. Speedwriting shorthand used in leading offices and civil service everywhere. Come observe, speak to our pupils. Low cost. Free demonstration.

It has nearly a century of success in training and placing secretaries, typists and bookkeepers in better positions.

## LANSING BUSINESS UNIVERSITY

120 W. Ionia Phone IV 4-8494

## New Center To Expand Services

### Special Summer Institutes Stated

An expanding program of service to labor and industry is scheduled for the coming months through MSU's new Labor and Industrial Relations Center.

The center, which received a legislative appropriation of \$175,000 on July 1 for its 1956-57 operations, will coordinate industrial relations instruction offered by the university, provide labor and personnel management program services and foster research, according to Dr. C. C. Killingsworth, director.

Scheduled this summer and fall by the center are special workshops and institutes for building and construction trade unions, personnel directors and labor relations managers.

Recently appointed to the center's full-time staff are Fred K. Hoehler, Jr., associate director for the labor program service; Stoyan M. Menton, coordinator of the labor program service; Dr. Jack Tieber, associate director for the research and planning service; and Dr. Dalton E. McFarland, associate director for the personnel management service.

Assisting the center's service programs to labor, Dr. Killingsworth announced, is a four-member labor advisory committee. This group includes George Dean, president of the Michigan Federation of Labor; John Schrier, assistant director, region II, AFL-CIO; Ralph Showalter, education department, UAW; and Don Stevens, education director of the Michigan CIO council.

A similar committee of management leaders will be appointed this month to assist the management program service.

A large-scale research project sponsored by the center is studying the effects of automation on labor, management and consumers.



Nope, she's not really holding the world up. But she is standing on one hand—which is more than most can do—or want to do during summer school.

## MSU Plays Host To 4-H Clubbers

Nearly 1,200 4-H Club members from 68 counties in Michigan's Lower Peninsula are on campus this week to observe the 8th annual Michigan 4-H Club Week.

The boys and girls, ranging in age from 14 to 20, have been awarded the trip to Club Week for outstanding work in 4-H clubs.

They will attend educational sessions, tour the campus and the surrounding farms, and hear talks by leading figures in the extension field.

## 'Most Beautiful' Tag Springs from Soil

Spartans like to boast, and rightly so, of their campus as "the most beautiful in the world."

Part of this claim is attributable to the many plants, trees and flowers grown on the 628 acres that make up the grounds.

Planning and taking care of this land is the job of the Landscape Architecture Department under Harold W. Lautner. In addition to this land on the academic campus, there are more than 4,000 acres of experimental land in and around East Lansing taken care of by the Department of College Farms headed by Byron H. Good.

Since 1855, when the university was founded, the plan has been to lay out the campus as attractively as possible. The architects and landscapers have worked together so that the buildings could be located in pleasant park-like surroundings.

MSU is proud to claim more than 2,600 kinds of trees, shrubs and vines on the campus, with an average yearly increase of 140.

The trees are brought here so that their growth in this climate can be observed. Most of the trees are bought through commercial sources and come from such places as British Columbia, Holland, England and many parts of the U.S.

Besides the trees and shrubs there are also the Real Garden Botanic Gardens which are the oldest in continuous operation. Open to the public, they contain plant exhibits from many parts of the world and are located behind the Women's Gym.

The maintenance of the campus grounds is one of the problems of the Landscape Architecture Department. The land is divided into zones, each having its gardener and superintendent, who are responsible for an area. Their job is to do the "housekeeping" for the university. Besides the gardeners there is a trained tree surgeon with a five-man crew, who takes care of pruning, spraying, girdling and cabling the trees.

The aim of the university is to eventually have planted on the campus at least one of every kind of tree that offers landscaping merit.

Gas produces 25 per cent of U. S. energy compared with 11 per cent in 1940.

## We style for WOMEN, too....

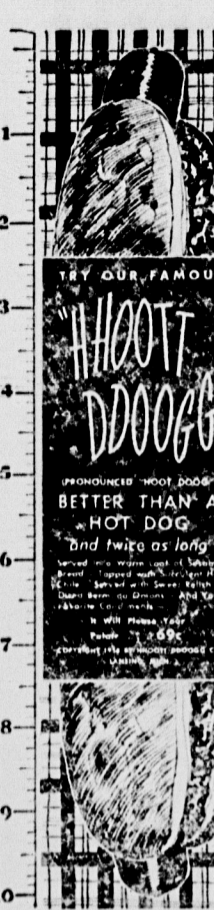


for that look of distinction, try

## Ken's Barber Shop

across from State Theater  
Hours: 8 to 5:30  
Closed Saturday afternoons  
FD 7-9957

## There IS Something NEW!



Served on Night Owl Menu  
9 p.m. to 3 a.m.

Lansing's Wonder Restaurant

*The Famous Grill*  
MICHIGAN AT LARCH

## Breakfast

## at KEWPEE'S



just can't be beat

- ☆ Homemade pastry
- ☆ Delicious coffee

Open at 6 a.m. —

## Hey Tiger!

To be a "social cat" you must have fresh, clean summer cottons... Have them laundered at

## Louis

Shirt Laundry and Dry Cleaners  
623 E. GRAND RIVER

## The Style Shop

## East Lansing Store

321 E. Grand River

## East Lansing Store

321 E. Grand River

# Removal Sale! Shop Today, 12:00 to 9:00

This Sale being held prior to moving to a new and larger location. Shop early for best selections.

## DRESSES

\$6 - \$12 - \$18

Values to \$25

## COATS

Spring and Summer  
Full Length and Toppers

1/3 to 1/2 OFF

## SPORTSWEAR

Special Groups

1/3 to 1/2 OFF

## FORMALS

1/3 to 1/2 OFF

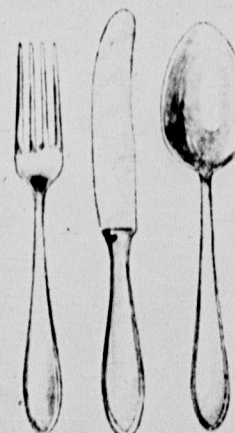
*The Style Shop*

321 E. GRAND RIVER  
East Lansing

## Liebermann's

See all the best in beautiful, practical

## STAINLESS STEEL



## "SHADOWPOINT"

an import from WMF

Unsurpassed in quality at any price, "Shadowpoint" is equally appropriate in traditional or contemporary settings. Forged of cromargan nickel-chrome steel, hand polished.

\$6.75  
5 pc. setting

## 18 OPEN STOCK PATTERNS

- |               |            |
|---------------|------------|
| "Laurel"      | "Facette"  |
| "Line"        | "Thora"    |
| "Form"        | "Thebe"    |
| "Serena"      | "Focus"    |
| "Shadowpoint" | "Fairwind" |
| "Motion"      | "Fjord"    |
| "Milano"      | "Kongo"    |
| "Ponta"       | "Canute"   |
| "Design One"  | "Moselle"  |

*Liebermann's*

107 SOUTH WASHINGTON AVE.



# LION '56 FOOTBALL HOPES RIDE ON ROOKIES, BIG "IF'S"

Summer vacations are over for the Detroit Lions when the season is starting. The team has announced that practice sessions are due to begin July 23 for rookies and July 24 for returning veterans. The 1956 campaign of the Lions will be the team's first since the 1955 season when they finished in last place.

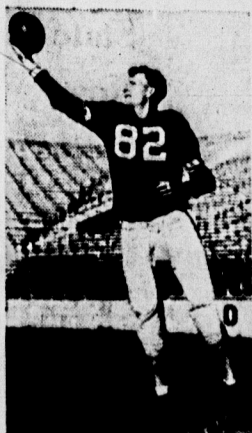
When the 1956 campaign officially opens the last day of the season will be a goal in the National Football League that no team in history has ever attained. That of winning a division title the year following a last place finish.

It sounds like an impossible task. Checking the records, the Lions won three and lost nine in '55 after suffering a series of crippling injuries and unfortunate breaks. However, the

Lions lost a total of four games by 13 points to indicate that despite losses, the team wasn't "outclassed." A reversal of the score in the cases mentioned would have brought the Lions into the division title chase.

More than ever before, the key factor in the Lions chance is quarterback Bobby Layne. To win in the NFL, a team needs a top-notch quarterback and injuries laid low the former Texas star on several occasions in '55 and doomed Lion chances.

The blond Texas star has been troubled in recent years by a recurring shoulder ailment that at times limits his passing effectiveness. Off-season treatment in his hometown of Lubbock, Texas has brought new hope to Layne and he has informed the coaches "the arm



... Dorne Dibble ...  
Ex-Spartan

feels fine and I'm looking forward to a great season."

For the first time since 1950 the Lions will be without the services of the colorful and talented Doak Walker. Walker closed out his pro career by leading the NFL in scoring last year despite the lions cellar finish. Lew Carpenter, the team's leading ground gainer the past two seasons, also will miss the '56 campaign. He is in the Army at Camp Chaffee, Ark. Bob Hornsby, however, may not play after a ten year pro career. Only other veteran not returning is Don Fucci, a reserve defensive halfback, who accepted a coaching position at the University of Kentucky.

Dick Stanfel, regular offensive guard, has been traded to Washington but the Lions obtained Ray Krouse, a powerful

defensive lineman from the New York Giants, in an involved trade that should bolster the club considerably.

Charlie Ane appears set at offensive center after seeing service at both the pivot spot and offensive right tackle last year. Harley Sewell and George Atkins form a hard-hitting, mobile guard combination. All Pro veteran Lou Creekmur probably will go back to his familiar offensive left tackle spot. The played defensive middle guard during part of the '55 season and Oliver Spencer, a returning serviceman who played the 1953 season, is due to take over at right tackle. Dave Muldison, who caught 44 passes as a rookie last year, Dorne Dibble, All-American end from MSU, Jug Girard and Jim Moran give the club depth and talent at offensive end.



... Hopalong Cassidy ...  
High Hopes For Lions

Layne will have several new faces in his offensive backfield but they are highly rated prospects. Leon Hart is being groomed to carry the fullback duties if Bill Bowman does not get his discharge from the Army. Gene Gedman, a top back as a rookie in 1953, returns from Army duty to give the club more running strength. Bill Stits may also see service on offense. "Hopalong" Cassidy, a unanimous All-American choice for 2 years at Ohio State, tops the list of newcomers but Lions coaches are also expecting great things from halfback Don McIlhenny of SMU and Tom Tracy of Tennessee, both draft choices. Jerry Reichow of Iowa will back up Layne in the signal-calling post with an assist from the veteran Harry Gilmer.

Defensively, Parker appears to have a pretty solid unit at his command. Bob Miller, one

of the league's most underrated defenders, Darris Mccord, Gil Mains, Ray Krouse and Jerry Perry (when he is discharged in late Sept.) should form the bulwark of a solid defensive line. Krouse was an All-Pro choice during his playing days with the N. Y. Giants.

Parker found out what a great "equalizer" a rash of key injuries can be to a team during the 1955 season. Barring a repeat, the coaches look for the Lions to move up considerably in the standings. Everyone in the Lion camp will admit that Bobby Layne's shoulder is the big "if." If the Texas ace is "right," the Lions might just possibly make the unprecedented jump from the basement to the throne room. It has never happened before. The Lions feel there's always a first time! And Hope '56 is it!

## SPORTSCOPE

### roses and onions

By BILL COZENS  
State News Sports Editor

Bitter words have been circulating about in recent days after the announcement of the Rose Bowl ban of Southern Cal. With UCLA and Washington already ineligible because of previous Pacific Coast conference housecleaning and California fined \$25,000 rumors have mentioned: (1) USC, UCLA and Cal will drop from the conference; (2) The PCC will fold; Cal's "Pappy" Waldorf is on his way out; and (3) The "Simon-pure" Big 10 will not renew the Rose Bowl when it comes up for final faculty vote because it doesn't want to tie up with a tainted conference.

The "Gate Receipts Glory" pie is large and anyone dipping into it should expect to get their fingers rapped and not just in surprise and anguish. The Big 10 had its housecleaning and survived and there is no evidence to the contrary for the PCC.

What seems to worry most grid addicts and especially the Rose Bowl officials is the possibility of a "weak sister" being the only team eligible for the post season classic. Included in the "weak sisters" is Stanford. How weak are the Indians? Last year they beat the Big 10 champs Ohio State and finished the season with a respectable 6-3-1 record. They lost an early season game to Oregon State, ran into rebounding MSU team, lost to the PCC champs UCLA by touchdown and tied a strong Washington team. The Spartans were the only team that beat them by more than 10 points and probably because they were "down" after the season.

Coch Chuck Taylor has 22 lettermen returning from that squad and 36 moving up from the frosh and JV teams. Six top ground gaining backs are returning and five regulars from the entire squad are missing. With last year's top two teams not eligible this year the Big 10 representative won't have a breather in the classic regardless of who they face and the Rose Bowl officials amount on 100,000 spectators no matter who is out on the New Year's day.

### Amateur Icers Practice

Probably the largest number of amateur ice skating champions ever assembled for an extended period will be taking this summer at the Michigan State University Ice arena.

No less than 15 title holders will be among some 150 skaters from 11 states, Canada and those who will participate in the eighth annual summer ice skating session sponsored by the Lansing Skating Club.

The famous skating Heiss family of New York City accounts for three of the champs. Newest is 16-year-old Carol Heiss, the reigning World Women's title-holder. Sister Nancy is the 1955 National Junior Ladies champion, and little brother Bruce is the 1956 Eastern Junior Men's champion.

Their activities will be directed by a group of five professionals, among Marilyn Thomson and Ann Allen Jordan, of the host city. Also McLaughlin, of the "Ice Palace" Training School, Michigan. Ph. Montgomery Wilcox of Grand, and Pierre Brunet, of Lake City.

**Drake's**  
Quality  
**GASOLINE**  
Has Lowest Prices in Town  
Regular 29¢ gal. Ethyl 31¢ gal.  
Motor Oil 2 gal. \$1.39  
With each \$1.00 purchase of gas, Cigarettes 10¢ package  
Oil 2 1/2 qt. and up  
Drake's is located just two blocks east of the University on Grand River. Come in and see Cliff.

Notice to all summer school students:

### Flash Cleaners

IN FRANDOR SHOPPING CENTER

have 1 HOUR dry cleaning service

4 HOUR shirt laundering service

AT NO EXTRA CHARGE



### complete AUTOMOTIVE service

for  
all makes of cars

Let our trained  
mechanics  
safely check your  
car  
NOW

**UNIVERSITY OLDSMOBILE**  
2216 E. Michigan Ave. Phone IV 2-1191

## Stevens Named New Aide

# Bennington Moves To Drake

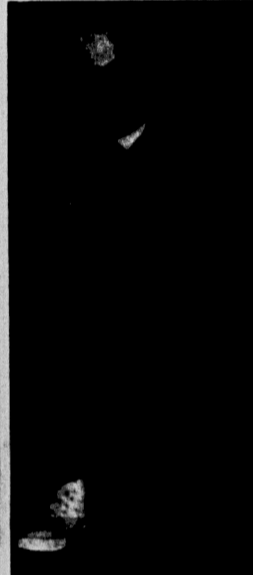
Athletic Director Biggie Munn announced last week the resignation of Assistant Basketball Coach John Bennington and the appointment of Freshman Coach Bob Stevens to the vacant position.

Bennington, who has served as assistant basketball coach at MSU for the past six years, resigned in order to become head basketball coach at Drake University in Des Moines, Iowa. The new Drake coach succeeds Jack McCalland who will devote his full time to the position of athletic director at the university.

Bennington was captain and star forward on the 1948-49 San Francisco Dons' National Invitational Championship team coached by ex-Spartan mentor Pete Newell. When Newell came to MSU in 1950 Bennington came along as assistant. He stayed at State after Newell left for the University of California and assisted Head Coach Ford Anderson, who himself coached at Drake.



... Bob Stevens ...  
Moves Up

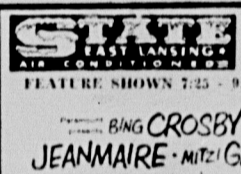


... John Bennington ...  
Moves Out

## Mat Schedule Announced

A ten-meet schedule for 1957 for the Michigan State University wrestling team was announced by Athletic Director Biggie Munn. Included are nine dual meets, eight of which are conference affairs, and a quadrangle tournament with Minnesota, Northwestern and Purdue. The one meet outside the conference is with Iowa Teachers College.

**1957 Schedule**  
Jan. 5 Quadrangle Tournament  
Jan. 17 Indiana Home  
Jan. 18 Iowa Home  
Jan. 26 Ohio State Columbus  
Feb. 2 Purdue Lafayette  
Feb. 4 Illinois Home  
Feb. 9 Iowa Teachers Cedar Falls  
Feb. 16 Michigan Ann Arbor  
Feb. 23 Wisconsin Madison  
Mar. 1 Minnesota Home  
Mar. 8-9 Big Ten Championships Columbus  
Mar. 22-23 NCAA Championships Pittsburgh



... BING CROSBY ... DONALD O'CONNOR  
JEANMAIRE ... MITZ GAYNOR ... PHIL HARRIS.  
**ANYTHING GOES**

STARTS SUNDAY FIRST SHOW 1:00 P.M.

EVERY SO OFTEN...  
QUIETLY FROM OUT OF NOWHERE...  
COMES A SPECIAL KIND OF MOVIE!

sheer enchantment that it becomes a personal experience to keep in your heart forever!

**Walt Disney's  
The Littlest Outlaw**

Francisco. After 40 months in service, he returned to USF and played two years of varsity ball, leaving it off by leading the Dons to the NIT title.

He passed up a professional career to work in the San Francisco alumni relations office for a brief period, then had six months of business experience before coming to Michigan State.

In accepting the resignation, Munn said: "We wish John well and appreciate what he has done at Michigan State. We regret that he is leaving but we always like to see our men advance in their professions."

Coach Anderson said, "John will be sorely missed here. I'm sure he will do a capable job in his new post."

Bennington is a native of Findlay, Ohio. He is married and his family includes his wife Barbara, and five children, the oldest of whom is Joan, age six.

Bennington's successor, Bob Stevens, has been on the MSU basketball staff since 1953 and is a graduate of Michigan State. He has served twice in the Marine Corps, played varsity ball at MSU from 1947-49 and coached at Milford (Ind.) high school and at the Great Lakes navy training station.

A new fresh coach has not been named and will be appointed at a later date according to Munn.

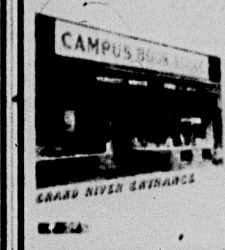
## the Best Sellers are at C. B. S.

### FICTION

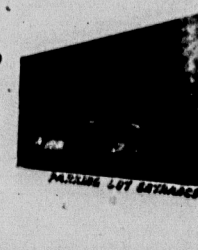
The Last Hurrah	Edwin O'Connor	\$4
Andersonville	MacKinley Kantor	\$5
Imperial Woman	Pearl S. Buck	\$4.95
The Mandarins	Simone de Beauvoir	\$6
A Thing of Beauty	A. J. Cronin	\$4
Lucy Crown	Irwin Shaw	\$3.95
Auntie Mame	Patrick Dennis	\$3.50
A Walk on the Wild Side	Nelson Algren	\$4.50
Ten North Frederick	John O'Hara	\$3.95
The Rosemary Tree	Elizabeth Goudge	\$3.95

### NON-FICTION

The Birth of Britain	Sir Winston Churchill	\$6
Arthritis and Common Sense	Dan Dale Alexander	\$3.95
Love or Perish	Smiley Blanton	\$3.50
Gift from the Sea	Anne Morrow Lindbergh	\$2.75
Profiles in Courage	John F. Kennedy	\$3.50
The Search for Bridget Murphy	Morey Bernstein	\$3.75
Minority Report	H. L. Mencken	\$3.95
Guestward Ho!	Hooten and Dennis	\$3.50
How to Live 365 Days a Year	John A. Schindler	\$4.95
Olympic	Andre Maurois	\$5.95



**The Campus Book Store**  
131-133 East Grand River Avenue  
East Lansing, Michigan  
phone ED2-4413



# How Real Cool MSU Coeds Beat the Heat Wave



The 'Spray In The Face' Method



She Prefers A Shower



A Breezy River Jaunt Is Nice — If You Don't Have To Paddle

## Official

(Continued from Page 1)

was a full-time, uniformed officer of Meridian Township.

Ward admitted he had never contacted college authorities for help in dealing with alleged "rowdy" students.

The supervisor said he "knew" MSU people were involved in complaints of late Lansing residents because of "the parking permit stickers on their cars."

When asked if he thought high-school students could be included in the complaints he replied, "You bet they could be."

Ward said he did not believe the General Police would be penalized by the drinking ban because "they have other places to go."

He said a drinking ban proposed March 1956 and year was defeated.

## HEIGHTS AUTO PARTS

29793 N. EAST

## REMEMBER!

There is only one  
lifetime guarantee

## MIDAS MUFFLER

sold and installed  
in Lansing & Vicinity

## MIDAS

MUFFLERS  
for some models

\$6.95

others low priced, too.  
Installation & check-up

FREE!



## MUFFLER CLINIC

120-122 W. IONIA

# BOOK SALE

Novels - 29c  
5 for \$1.00

POCKET BOOKS  
2 for 25c

GIBSON'S  
UNIVERSITY  
BOOK STORE

128 W. Grand River  
(in the People's Church Block)

## Summer Work Begins On 1957 Wolverine

Summer work on the 1957 Wolverine will begin during the next week.

Final dummies and photographs will be worked on. Students desiring to work on the book should contact Chuck Pardon in the Wolverine office, 3rd floor, Union.

## State News

## Photos

By

Chuck Pardon

\*\*\*

## the helen barresy salon

"where art complements beauty"

hair styling

permanent waving

coloring

cutting

manicuring

1015 E. Grand River

Phone ED 2-6363

(Two blocks east of Abbot Hall)

## IN PERSON! • THIS SATURDAY

## STAN KENTON

AND HIS INTERNATIONALLY FAMOUS ORCHESTRA

★ 20 of the World's Greatest Instrumentalists

AT THE **DELLS** LANSING

"One of Michigan's Largest Ballrooms"



ADVANCE TICKETS ON SALE —  
PINO'S RECORD SHOP —  
CORAL GABLES  
1.80 — TAX INCL. — TICKETS AT  
THE DOOR — SAT — 2.20 TAX INCL.

HASLETT  
BUS  
TO DOOR

NO AGE LIMIT TO BALLROOM  
BOX OFFICE OPENS 8:00  
DANCE 9:00 TILL 1:00 A.M.

OPEN EVERY THURSDAY EVENING UNTIL NINE

# Save

DURING OUR STORE-WIDE  
**MIDSUMMER  
FASHION CLEARANCE**  
NOW IN PROGRESS

Tremendous savings on fashions you want now  
for the remainder of the summer, for vacations,  
and for wear into the months ahead!

Dresses - Coats - Suits - Shoes - Blouses  
Coordinates - Skirts - Shorts - Knit Dresses  
Slacks - Rain Coats - Lingerie - Robes - Handbags  
Hosiery - Jewelry - Belts - Umbrellas - Millinery  
Scarves - Infant's Wear - Girls' Dresses, Blouses,  
Skirts - Children's Shoes and Boys' Wear



EAST LANSING