

Welcome  
Freshman

# Michigan State News

Welcome  
Freshman

FRESHMAN ISSUE

EAST LANSING, MICHIGAN — FRIDAY, SEPTEMBER 6, 1957

PRICE 5 CENTS



MSU President John A. Hannah

## President Hannah

To All New Students:

Each year the STATE NEWS extends to me the privilege of extending the official greetings of the governing board, the faculty, and the students of Michigan State University to you who are coming here for the first time. It is a valuable privilege, for we want you to feel at home from your first day on the campus, and this welcome is extended most sincerely.

You have chosen as your Alma Mater a university known for the beauty of its campus, the friendliness of its atmosphere, the quality of its educational opportunities, and its dedication to the service of people. We who have been here for a time think you have chosen wisely, and are happy to welcome you to the community which is to be your home.

You come here with widely varied experiences and backgrounds; you come from most of the states of the Union and many foreign lands; you have differing educational goals in mind. But you have a number of qualities in common — youth, enthusiasm, intelligence, and determination to improve yourselves through education. You will find here almost unlimited opportunities to capitalize upon these valuable assets, and will be given every encouragement to do so. Whether you achieve what you seek in coming here will depend almost entirely upon your own attitudes towards your work, your study, and your play. You will have every chance to succeed — and it will be hard to find a reasonable excuse if you fail.

There are a few things you would do well to keep in mind. The first is that your primary objective is to learn — your class and laboratory work should come before any other activity.

The second is that learning is a social experience, and that a wide choice of activities to complement your curricular activities is available to you. Wisdom in the college student is best exemplified by a judicious combination of classroom and extra-curricular activities.

The third is that Michigan State University expects you to conduct yourselves as ladies and gentlemen at all times, both on and off the campus. Your life here will be the most pleasant if you observe the rules of personal conduct which mark educated men and women the world around.

The fourth is that the philosophy of extending educational opportunities to qualified young people at public expense is under serious attack for the first time in many decades. Your attitudes towards work and play, your conduct, and your achievements will do much to determine whether the doors of opportunity are to remain open for others as you have found them open to you here.

Michigan State is a large university, and its size may awe you a bit at first. But you will soon discover that it is made up of a large number of small groups, just as a big city is made up of a number of neighborhoods. You will become acquainted quickly with the relatively few in your dormitory precincts, your class sections, and activity groups, and gradually widen your circle of friends and acquaintances. Soon you will find that you can have both the advantages of a large university and the advantages of a smaller, closely-knit community having like interests and tastes.

For the first few days, you may be bewildered and confused; I hope you will accept my assurance that everyone at Michigan State is anxious to help you to become accustomed to our ways quickly and soon to feel at home. Our faculty members are known for their ability and desire to help young people to grow to find themselves; our students are friendly and considerate by tradition.

We welcome you to the campus, and hope you will make the years of opportunity now opening before you among the happiest and most useful of your lives.

John A. Hannah

## Enrollment Limit Set at 20,500

By NELDA TROUT  
State News Night Editor

MSU will once again witness a record-breaking enrollment for the next consecutive year, even with the term enrollment limits set at 20,500 due to the lack of available academic facilities.

According to registrar Ross, the limit, an estimated 3,000 new students will register, 3,000 of whom are freshmen. The remaining new students include transfers and graduate students.

During the busy part of spring term, the State Board of Education, the governing body of the university, passed the limitation of enrollment for the coming year because of the crisis in space and shortage of appropriations from the legislature for the operation budget.

The American Council for Education recommends that schools provide at least 200 square feet of classroom space per student. During the past year only 122 square feet were available at MSU.

From 1930-1939 a general decline took place in the construction of facilities, with a drop from 235 square feet per student to 115.

D. B. Varner, vice president in charge of off-campus education, described the limitation en-

dowment as a "bottleneck" and stated that it is our hope that appropriations will be adequate to accept all qualified students in the coming terms.

While funds for a number of new buildings have been granted by the legislature, construction

## Going Up

1945	5,379
1946	13,126
1947	15,293
1948	16,019
1949	16,241
1950	14,993
1951	13,985
1952	14,085
1953	14,609
1954	15,525
1955	17,890
1956	19,125
1957	limited to 20,500

tion cannot be completed before ten or three years.

During this time enrollment may increase under a less stringent limitation, or the restriction may disappear entirely depending on the appropriation for new facilities.

A 25 percent increase in enrollment fees over last year was assessed to help meet the rising costs of the university. Full-

time students pay a course fee of \$10, while those enrolling in veterinary medicine pay \$100. An out-of-state student pays an additional \$100.

Registration this year will mark the sixth straight year of rising enrollment.

In 1946 the university witnessed the largest jump, a 100 percent increase in enrollment over the year of 1945, due to returning World War II veterans. Facilities, including classrooms and dormitories, were taxed severely.

The veteran pressure pushed enrollment upward for four years, hitting a peak in 1949 with 16,241.

With sleeping rooms at a premium, the Union and Jenson First House were temporarily converted for use as dormitories.

A flooding in the number of students seeking dropped registration during 1956-57 took place.

Following the Korean war, the enrollment started again.

World War II babies now attending high schools will hit the nation's colleges sooner than they can be handled. These, along with the greater number of people able to attend college, are the concern administrative officials must face.

## Governs University

## Board of Agriculture

All the duties and responsibilities of running the nation's ninth largest school are handled by the State Board of Agriculture, MSU's governing body.

Six of the board's members are elected, while the other four serve in an ex-officio capacity. The board meets monthly in the Board Room of the Administration Building. At each of the meetings the board passes on staff changes, rules changes, construction work and hears reports on various phases of university operations.

The elected members of the board are: Clark L. Brody, Lansing; Conner D. Smith, Standish; Forest H. Akers, Detroit; Frederick H. Mueller, Grand Rapids; Arthur K. Rouse, Boyne City and William Baker, Mesick.

Replacing Akers and Mueller on January 1, 1958, are Lynn Bartlett, Detroit, and Donald Stevens, also of Detroit.

Ex-officio members are: Claude L. Taylor, state superintendent of public instruction; John A. Hannah, MSU president; Karl M. Donel, MSU secretary; and comptroller Philip J. May.

Replacing Taylor is Jan Van Pelt, Muskegon.

The university's president is elected by the board.

Secretary McDonel is responsible for university properties, including supervision over purchasing, personnel, grounds maintenance, buildings, campus utilities and food service.

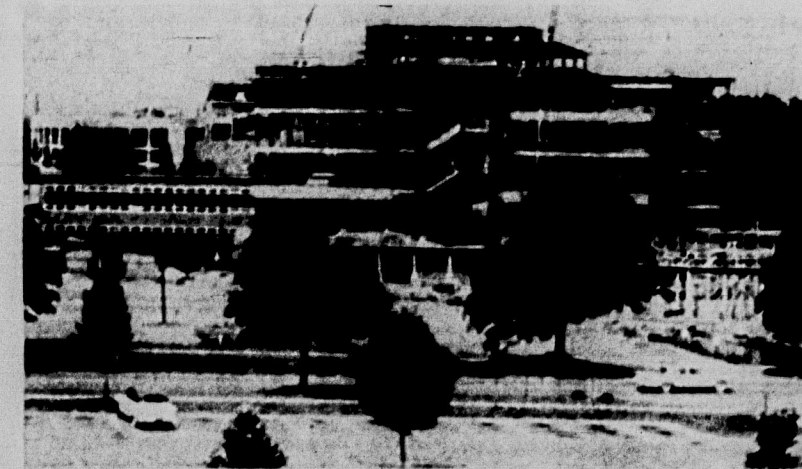
Comptroller May also serves as treasurer of the board. His office is responsible for budget-

ing financial records, endowments, and auditing the college accounts.

The board is responsible for accepting gifts and grants on behalf of MSU. The board also administers and supervises the Michigan Agricultural Experiment Station system, which conducts research in soils, nutrition, agronomy and associated agricultural subjects.

Another board responsibility is the State Cooperative Extension Service, which provides information on agriculture and home economics to Michigan citizens. The 4-H club is also operated through this service.

The board also handles student rules and regulations such as the student driving and drinking regulations on campus.



The new College of Education building is expected to go into use about a year from now. The building will have many modern facilities for the education of teachers.

## New Honors College for Top Students

New students at Michigan State will find on campus a unique institution: the Honors College. It is the only college in the country designed specifically for students of superior ability and achievement.

Its basic objective is to provide a situation in which students of high ability are constantly challenged by the most advanced work for which each is ready.

Who may enter the Honors College? How do you apply? What happens after you become an Honors College scholar? Entrance requirements are simple.

Anyone who has earned between 45 and 92 credit hours, with a cumulative 3.5 average, is eligible to enter the Honors College.

In other words, you may enter the Honors College anytime between the end of your freshman year and the beginning of your junior year, once you have earned the required average.

This means that transfer students from junior colleges may enter if they have met the requirements in their junior college.

Application is equally simple. If you have achieved the necessary average by the end of your freshman year, you simply fill out a form stating that you wish to become a member of the Honors College.

Shortly after your entrance in the Honors College you will be appointed a special advisor in the field of your major interest. You and your advisor

then decide what your future curriculum at Michigan State will be.

The curriculum of the Honors College student allows for more flexibility than is customary. Once a student has been designated an Honors College scholar, all requirements for graduation from Michigan State, other than the total number of hours, will be waived.

A program of study is worked out by the advisor and the student which seems appropriate for the individual concerned. Flexibility, within the framework of your educational goals, is both possible and desirable.

Such a course of study may include any of a number of possibilities: attaining credit in some courses by examination; independent study under a fa-

ulty member, waiving of prerequisites for advanced courses; permission for qualified undergraduates to take graduate courses, etc. It is expected that the Honors College student will be going further in his or her field of specialization as well as gaining more time for work in general education.

It should be stressed that the Honors College does not have a "master plan" for the Honors College scholar. Your curriculum is tailored to your specific needs or goals.

Aside from the possibilities of a more flexible and advanced curriculum, the Honors College does provide other academic advantages. Honors College students have "stack privileges" in the library, which means you

may use the storage and study areas normally open only to faculty and graduate students. Also you will have the privilege of attending Honors College colloquia and seminars.

Once you enter the Honors College, the requirement for continuing as a member is as simple as the others. You must maintain a 3.2 average. If you fail to maintain this average, you are allowed to return to your regular program without being penalized in any way. However, the chief concern that you should have right now is to qualify for entrance.

The Honors College is an unparalleled academic opportunity, allowing you to go at your own rate of speed toward the chief end of an educated person, a disciplined imagination.

Reproduction of the American Historical Association, regional secretary of the American Society of Aesthetics, and a member of the American Association of University Professors and the Michigan Academy.

Dr. Stanley J. Ilderda, assistant to the vice-president for academic affairs at Michigan State University, is director of MSU's Honors College.

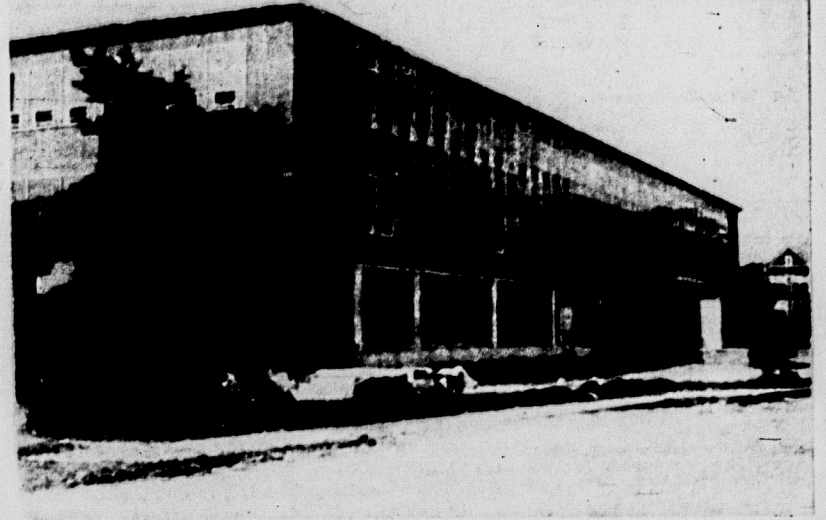
Dr. Ilderda joined the Michigan State staff in September, 1952, as an assistant professor. He was promoted to associate professor of humanities in 1956.

The Honors College was established in November, 1956, to provide special opportunities for superior students.

Born June 4, 1920, at New York City, Dr. Ilderda received the B.S. degree in mechanical engineering at the University of Notre Dame in 1946, and the B.A. degree in social science at Baldwin-Wallace in 1947. He received the M.A. and Ph.D. degrees at Western Reserve University in 1951.

Before coming to MSU, he was an assistant professor at Western Michigan College, 1951-52.

Dr. Ilderda is a member of the Committee for Documentary



This is the new Student Services Building which will be opened about Jan. 1. It will house many student activities and student service organizations. Cost will be near two and a half million dollars.

## The Cement Never Sets on MSU

## Construction Continues

By DON MYLES

An 18-room addition to the new Student Services Building is the first of the new MSU building program, which is expected to have classroom facilities ready in three new buildings by 1958, according to Donald G. Ross, everything accepted.

Opening of the Student Services Building, the College of Education, the Kresge Art Center, an addition to the Women's Gymnasium and 600 additional planned housing units is anticipated next year.

They will join the 45,000 square foot addition to the Memorial Health Center, where landscaping will be completed this summer and the new upper deck and press box at Macklin stadium, which will be ready for the 1957 football season.

The Student Services Building will be the first of the new units to be put into service. It will house student government offices, publications, the Dean of Students, the Dean of Women, and offices for other university services next Jan. 1.

Total cost, including utilities installation, for the brick, concrete and steel structure, will be \$2.5 million.

Fourteen classrooms, laboratories for industrial, arts and home economics education, nine graduate seminar classrooms,

seminar, conference classrooms, an auditorium classroom, and two center and office areas in the College of Education are expected to go into use about September, 1958.

Construction and related costs for adding this 161,700 foot of floor space is estimated at \$1.4 million dollars, Ross said.

The Kresge Foundation has donated \$1.5 million dollars for the construction of an art building started this summer. Tentative completion date is September, 1959.

The center will contain 14 classrooms in addition to facilities for painting, sculpture and other plastic arts. It is located between the Art Museum and the Alumni Memorial Chapel.

The university golf course will be unique in that it will contain interesting trees, flowers and other Michigan flora in addition to providing recreation for the student body.

A building housing the starter and limited shower and locker facilities, and shelters on the course will be part of the self-lauding project which was financed by borrowed funds, according to Milton Baron, assistant campus landscape architect.

Progress on the Macklin layout has been hampered by inclement weather and disturbed

drainage systems," said Baron, but the course should partly be ready next spring. The grounds are in good shape and planting of trees, shrubs and so forth is going nicely," he added.

An addition to the Women's Gymnasium will double the existing women's physical education space and will provide a new pool, gym and other recreational and intramural facilities.

Plans are to begin using the addition in September or October of 1958, according to supervising architect Ross.

The improvements to Macklin stadium will increase the seating capacity to 75,000 persons. The top deck of the press box will be for radio and television coverage. The second deck will be exclusively for the working press and the bottom deck will house camera men and equipment.

Work has begun on a new entrance building to be completed in 1959. In addition to entrance, the new unit will contain a pool and facilities for all intramural sports. It is located between the Administration Hall and the stadium.

Spartan Village, new married housing unit, has 500 units under contract to be completed this year, with 800 additional units to be built in 1958.

With construction continuing at the rate of 500 units per year until 1960, MSU should easily maintain its position of providing more married housing facilities than any other school in the nation. The 1950 total of units will be 1,460, according to Thomas A. Dutch, director of housing.

MSU also provides more dormitory space than any other college or university.

Plans have been taken on the first two of a planned group of five major buildings comprising the new College of Engineering. Construction plans for this college cover the next five years and cost is tentatively estimated at \$13 million dollars.

In the planning stage are additions to the Administration and Home Economics buildings. These improvements will be advanced as fast as is practicable, according to Ross.

Availability of funds, scheduling, coordination, and technical difficulties are a few of the problems areas in the construction program, said the architect, but we are advancing satisfactorily in spite of delays.

## Director of Honors College

Dr. Stanley J. Ilderda, assistant to the vice-president for academic affairs at Michigan State University, is director of MSU's Honors College.

Dr. Ilderda joined the Michigan State staff in September, 1952, as an assistant professor. He was promoted to associate professor of humanities in 1956.

The Honors College was established in November, 1956, to provide special opportunities for superior students.

Born June 4, 1920, at New York City, Dr. Ilderda received the B.S. degree in mechanical engineering at the University of Notre Dame in 1946, and the B.A. degree in social science at Baldwin-Wallace in 1947. He received the M.A. and Ph.D. degrees at Western Reserve University in 1951.

Before coming to MSU, he was an assistant professor at Western Michigan College, 1951-52.

Dr. Ilderda is a member of the Committee for Documentary

Reproduction of the American Historical Association, regional secretary of the American Society of Aesthetics, and a member of the American Association of University Professors and the Michigan Academy.



Dr. Stanley J. Ilderda

## Jewish Students Served by Hillel

A national organization availing its services to Jewish students is the B'nai B'rith Hillel Foundation. It is devoted to cultural, religious, social and counseling services.

This year the Hillel House, located on Hillcrest, East Lansing, will have a full-time director for the first time.

At the top of the agenda for the year is religious devotion in the Memorial Chapel for the High Holy Days. Services for Rosh Hashanah will be conducted Sept. 25, 26, 27. Kol Nidre will begin at 7 p.m. Oct. 4 and Yom Kippur services are scheduled for Oct. 5.

During Orientation Week representatives from the Lansing B'nai B'rith will be on hand with the officers of Hillel to welcome the new students and greet the parents.





## Michigan State News

Read Daily by MSU's 21,000 Students and Faculty  
The Michigan State News is published by students without direct faculty supervision. It is not the official voice of the university or of the student body, but while seeking to serve the best interests of both, stands ready to battle any move which would drive a wedge between the two, whether it comes from within the university or from outside. Associate Editor of the Associated Press, Inland Daily Press, Associated Press and Associated College Press.

Friday, September 6, 1957

Page Two

# How to Get Through Registration: Lesson 1

During your first busy weeks at Michigan State University you will take tests, go to meetings, meet new people and run into many new experiences. . . some pleasant, some not so pleasant.

The grand finale, before you get to the ordinary process of simply going to classes, is registration.

There will be many arm-banded helpers about for you to ask questions of. They have the answers. Don't hesitate.

The actual mechanics of registration will follow along these lines:

You will see your enrollment officer. He will help you decide what courses you are going to take and will give you a series of cards to fill out before you go to registration.

He will also give you a trial schedule card to work out a proposed schedule on.

By working with the catalog and schedule book at home, before you come to campus, you should have several schedules worked out ahead of time. It will save you juggling sections after you get into the Auditorium.

When you go to the Auditorium according to the alphabetical list, you should have: registration cards, enrollment card, admission card, trial schedule card, schedule book and money.

Under a new, enlarged system, you will enter the west entrance to the Auditorium, through the main door and down to the basement. Your registration cards will be checked and you will get and fill out a treasurer's card.

You will continue through a row of tables where your cards will be checked and your fee card will be marked for board, room, etc.

You will then pay, either cash or check, your bill and proceed to the next step to have your ID card picture taken. You will also pick up your activity book and a ticket to the first football game of the season.

Then you go upstairs to the main auditorium to get your class cards.

Circling the room is a row of tables with registration officials seated behind them. Above each is a board listing the department and the sections of classes which are closed.

To register for a particular section you ask the official for a class card of the particular section you want and give him your enrollment card to initial.

You may have trouble getting the sections you want in the basic courses, this is why you should have several alternate schedules worked out in advance.

After getting all your class cards and filling them out you are admitted to the stage of the Auditorium where your cards are checked and taken from you.

You are then through unless you want a flu shot or want to sign up for some of

the other activities which have promotion tables set up along the exit halls.

**Next Stop: Spartan Stadium!**

The registration system here is considered one of the best in the country, at most schools you run all over campus to each department you want a class in. Here everything goes on in the same building.

Remember, you are not expected to know the system. If you are confused, ask questions. Everybody here will be glad to help you, particularly the arm-banded people in the main auditorium. No question is stupid if you don't know the answer.

## Time Budget

Budgeting of time as well as money is one of the many important lessons to be learned in college life, especially through the quarter system at MSU.

The 10 week quarter moves rapidly with no long intervening breaks or vacations by which to catch up on assignments. The foresighted student goes to work immediately to avoid trouble later.

But studies aren't the only item which require budgeting of time. The whole college program, extra-curricular and social, as well as academic, must be wisely planned.

At MSU there is a very wide variety of clubs and activities which will meet the taste of almost any student. Unlike some high school groups, however, most of these clubs demand a great deal of participation on the member's part. He can't just join them and then forget them.

Then there are the many social functions on campus which vie for the student's time, such as dances, the Lecture-Concert Series, sports highlights and, of course, the ever popular week-end pastime of casual dating.

These are the elements. Now the question is how to fit them into a daily or weekly schedule. The answer naturally depends on the individual and his goals for his college life.

His main purpose in being here is an education. So he should plan his time wisely in order to attend classes regularly and complete assignments when due.

Through campus activities and service groups he will learn to accept responsibility in the community later, and he will in turn build his own leadership potential.

Finally, just about anything one does in life involves working with people. You can't fight 'em so you may as well join 'em.

The student must consider all these factors carefully in setting a time schedule, if he is to receive a satisfactory return on his four-year college investment.

## See Here!

To your left you see the reason MSU students get out of bed in the morning and go to class. So they can pick up the State News and work the crossword while the professor lectures, thinking they are taking notes.

If you have a watchful teacher you can tear out the crossword and slip it into your notebook. Only rarely will you get caught if you follow this procedure.

If you are one of those many people who get up in the morning wishing there was some other way to start off the day, Peanut is the answer. You can't feel sorry for yourself after seeing the tough times of Charlie Brown.

Of course if you get through the crossword and Peanut and still have classes before you, you can read an editorial. (That's why we put Peanut and the crossword on the edit page, to trap you into reading the editorials.)

If you don't agree with it, write us a letter. Of course if you agree with us, we would like to hear from you about that, too, but we don't get many like that.

If you are interested in the editorial type of material and would like to help put out a reasonable and significant editorial page, a place can be found for you. A great deal of research is needed for many editorials and all sorts of jobs need sincere and intelligent students who will do them well. The State News is always in need of staffers and a great deal can be learned about many things. Especially people.

## Campusisms

By BILL KEOUGH

The average MSU student discards certain parts of the English language when he begins his college education here at State. He talks in "campusisms." These are esoteric abbreviations for longer words.

There are several reasons why students talk in campusisms. It gives them a feeling of belonging; it makes them feel superior to people who don't know what they are talking about; and some of the students never bothered to find out what the campusisms meant so they don't know any other way to talk.

In order to enlighten the class of '61 so that they too may feel a part of the group here are some of MSU's campusisms and their approximate translations:

Nat. Sci. (knot-sigh) — a freshman course which has to do with bugs and science which is natural.

Comm. Skills (rhymes with Catskills) — a freshman course which has to do with communicating.

Phys. Math. (fiz-math) — a campus structure referred to in the architect's plans as the physics and mathematics building.

EL Ed. (L-ed) — a type of coed who is going to be an elementary education teacher.

The Aud. (pronounced "awed") — sometimes referred to as the auditorium.

Poli. Sci. (polly-sigh) — a science about politics.

Analyt. (anna-lit) — a course which involves the study of analytical geometry, generally studied by people with slide rules strapped to their sides.

An. Hub. (ann-hub) — something to do with husbandry of animals.

Soc. (soche rhymes with gauche) — a course in the Basic College which deals with social science.

The House (rhymes with louse) — a term used by fraternity and sorority people when referring to the place where they live.

Grill Hound (rhymes with round) — a type of character who can always be located in the Union Grill, generally surrounded by fellow grill hounds.

The S'News (snooze) — a pseudonym employed by the State News.

Home Ec. (home-ick with an ick) — sometimes referred to as home economics, a major which domestic-type coeds frequently take.

Econ. (tee-con) — a clever way of referring to economics, can be used when referring to either the macro or the micro phase of the subject.

The Ad. Building (rhymes with bad) — the structure which houses the offices of the university's administration.

TEIE (tea-gee-lee) — a rousing cry used by devil-may-care students every Friday, literally: "Thank God it's Friday."

Mickey-Mouse (like with ears) — used as an adjective to refer to courses which are relatively simple.

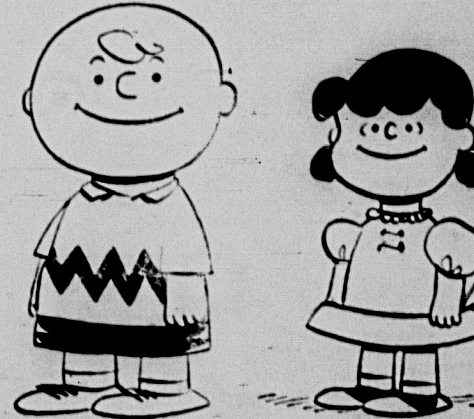
Psych. (sike) — a department in the university which teaches psychology courses is known as the psych. dept. The courses it teaches are called psych. courses.

Calc. (like in California) — rarely referred to as calculus, GDI (gee-dee-eye) — a casual reference which is made to students who have not affiliated with a fraternity or sorority. . . the I stands for independent.

Coed (almost rhymes with poet) — A young woman who matriculates at MSU does not become a coed until she has been kissed under Beaumont Tower at midnight.

EMOC (hee-em-O-see) — a student who has achieved a certain degree of stature in the eyes of his classmates, literally: Big Man On Campus.

AUSG (is never pronounced, only spelled) — an abbreviation which is used to save space when writing about the All University Student Government.



CHARLIE BROWN LUCY

## Michigan State News

Published on class days Monday through Friday inclusive, during fall, winter and spring terms; weekly during summer term, and one special freshman issue between summer and fall terms. Entered as second class matter under act of March 3, 1879 at the post office, East Lansing, Mich. Mail subscriptions, payable in advance, for one term, \$2; for two terms, \$3.50; for three terms, \$4.50. Member of the Inland Daily Press, Associated Press and the Associated Collegiate Press.

Ray Pierce Editor-in-Chief  
Barrett Alley Business Manager

### Staff

Don Myers, Paul LaRocque, Larry Wroblewski, Nelda Trout, Bill Cousins, Richard Moessig and Betsy Halberg



As you can see the State News finds many uses. You can wipe mud off your shoes or hold it over your head to keep the Michigan showers off or, if worst comes to worst, as a last resort of course, when there is absolutely nothing else to do but study, you may even break down and read it.

## He's Ivy

You will become familiar with the term "ivy" and "ivy league." Sometimes it will be said with a sarcastic tone, sometimes not. But most people seem to feel either for or against. Here is a poem from the Mercury, the City College of New York paper on the subject:

He wears Brooks Brothers shirts with button down collars,

Twisted jackets costing many dollars,

Silk red ties with diagonal striping,

Flannels with ornamental pipping,

Why? He's Ivy.

He drives a red M.G., a low two-seater

With leather cushions, radio and heater.

And on Thanksgiving recess, he'll be near or far,

He'll "buzz in" for cocktails at the Biltmore bar,

Why? He's Ivy.

At his Homecoming he'll do or die;

Aided no doubt by a flask of rye.

Then for the dance he'll doff his flannels and bucks,

And don an impeccably tailored tux.

Why? He's Ivy.

And when Uncle Sam sends our boy his greetings

"Dad" sends doctors to the draft board meetings.

And the doctors swear he's a wee bit deaf,

The Board reconsiders, and our boy's 4-F.

Why? He's Ivy.

He then steps into "Daddy's" firm,

Starting at the bottom (he's got to learn).

And in a couple of months, the company's floored,

Our boy is made Chairman of the Board.

Why? He's Ivy.

Then he marries a debutante, loving spouse,

She loves both him and his eighteen-room house.

She bears him a child, a lad quite gay,

Dressed in flannel diapers. (Charcoal grey.)

Why? He's Ivy too.



Picture yourself in smart fashion eyewear by Harlequin! Wallace's has an enchanting, exclusive collection of Harlequin frames in styles and colors to enhance your features and blend with any costume, whether high campus fashion or casual class wear. Wallace's make eyewear your most exciting fashion accessory.

eye examinations by Dr. W. C. Jensen  
Registered Optometrist

## WALLACE OPTICIANS

State Theatre Bldg., East Lansing • Ph ED 2-3117  
also offices Downtown at 107 N. Washington-Ph. IV 2-1175

# MEET THE TEAM

"DUFFY"  
"BIGGIE"

Sept. 26

4:30 p.m.

Macklin  
Stadium

MARCHING  
BAND  
Cheerleaders

SEE YOUR  
FOOTBALL  
TEAM RUN  
PLAYS

Kenny Davis  
Quartet

# MEET THE TEAM

Sponsored by  
your  
All-University  
Student Government



# The Editor Offers Some Free Advice

By RAY PIERCE

You who come to Michigan State are entering a new and exciting period of your life. You are about to meet an infinitely number of new ideas, theories, ideologies, fads, trends and what have you.

Many of the teachers and students you will encounter here are unusual individuals, some are interesting and sincere, some are maladjusted misfits seeking notoriety by their eccentricities and professed beliefs. You will learn from contact with these people which are the associations that will aid you in life and which are the chatterbox mouthing ideas they don't understand themselves.

You will find persons that will question every belief you have and who will try to force you to defend your beliefs. You will find many who will try to influence you toward their beliefs and ideas. Some may be good, many will be bad. This is the major advantage of college life—this chance to meet and evaluate the variety of ideas existing on a university campus.

The essential item to bring with you to Spartan Town is an all-encompassing curiosity. Even more than a good mind, you need curiosity—without which intelligence is useless. You will discover after a short time there are many students with exceptional abilities who waste their time in school because they are not interested in much of anything.

The individual who is curious and feeds his curiosity will find himself among interesting people. In the quest for information you naturally fall in with people of like interests. Faculty members find few students with a deep and sincere interest in ideas or the meaning behind subject matter. When you show up in their office hungry for information, you will be met with an equal enthusiasm by most teachers and you will find yourself meeting other students of similar interests. The harder you chase knowledge the more you will find it is closely related to people.

Books are valuable—people write books. In college you can find the people that do, or can, write books. These people are a finer source of ideas and knowledge than the much worshipped printed word.

The opportunity of close relationships with outstanding faculty people and an occasional authentic intellectual student,

should be the primary purpose of coming to East Lansing.

The experiences will be sometimes rewarding—sometimes shattering—always educating.

When you cease to be interested in information and ideas you have stopped growing intellectually. You may as well go home.

Don't be in a hurry to join groups or organizations. You have four years to spend here. You have plenty of time to pick the kind of people you want to live with. Spend a little time deciding what kind of people you like and what kind of a person you want to become before you join the first group that shows an interest in you.

You will find many of the students around you will judge you, and others, by such irrelevant things as the clothes you wear, how well you use the English language, or by how much you know about sports cars. Try not to let this kind of person bully you into conforming with fashion, speech and a tons.

Be yourself, judge others by their personalities, not by their color, bank account or whether or not they wear a belt in the back.

During Welcome Week students may drive to campus with their belongings but the car must be left in a designated student parking lot after unloading.

The finest in dry cleaning and laundry service... Complete tuxedo rentals... at **CAMPUS DRIVE-IN CLEANERS** across from Berkey Hall - ED 2-0972.

## LET'S GET ACQUAINTED!

AT

**MICHIGAN STATE**

**YOUR BEST PHOTOGRAPHIC FRIEND IS A "PORTRAIT THAT SPEAKS" by H. GALLUP.**  
**IT ALWAYS SAYS NICE THINGS ABOUT YOU.**

**Gallap-Austin Studios**

218 ABBOTT ROAD

PHONE ED 2-1813

EAST LANSING, MICHIGAN



DEAN KING

Hey, shutterbug! Want to put your talent to work? See John Wade, publications darkroom manager, for a job shooting pictures for the State News, Wolverine and Spartan Magazine.

Would you like to learn more about photography? Apply for a job with the student photo staff. Third floor of the Union Building, publications darkroom, ask for John Wade.

### Crossword Answers



## Study First, It Pays

## Advice From Dean of Students

The Office of the Dean of Students cordially welcomes all new students to Michigan State University. We are happy you have chosen Michigan State University to continue your education.

Those of you who are coming to college for the first time will have many new experiences. The opportunities to meet new people—make new friends—engage in new activities and experiences in communal living are a few of the things you will enjoy.

There are a few regulations with which you will want to become familiar. First, the rule relative to drinking or bringing alcoholic beverages on the property of Michigan State University. This rule is of long standing. The penalty is suspension and there is no alternative. I am sure you will want to cooperate in this regulation.

Some of you will need to become familiar with traffic regulations; all of you, with housing rules. You will want to learn and observe college traditions and maintain good citizenship.

Many recreational and cultural activities are offered for your pleasure. Take advantage of what you can with the time you have available.

Here for the first time, many

of you will not be supervised so far as the use of your time is concerned. Learn to prepare for tomorrow's assignment before today's pleasure. Work out a study and play program; then follow it.

Getting a good start in college is very important. Good study habits will accomplish much for you. Put first things first. Get as good an education as you can.

In your living quarters you will need to cooperate with your roommates and those who live in the dormitory with you. Observe dorm rules—study and quiet hours. Make it possible for the person who wishes to study to do so—it is his right.

All of the services of the Dean of Students Office are available to you at any time.

The following services are under the Dean of Students Office can be helpful. Counseling—take your problems to them. Health Center—to help you when you are ill. Placement Office—for your part-time job if you need one. You should not plan to work during your first term unless it is absolutely necessary.

Men's Division—students organizations, veterans affairs, loans; Women's Division—AWS,

sororities, social affairs. Foreign Student Adviser, Housing Office. Feel free to stop in these offices and talk over your problems. They are there to help you.

College can be a wonderfully stimulating and meaningful experience to each of you. I wish to all of you success and many happy experiences while you are here.

Tom King  
Dean of Students

### Beaumont Tower

Completed in 1929 Beaumont Tower stands on the site of the first building—College Hall—erected on this campus in 1855. Today Beaumont Tower has one of the largest carillons to be found on any university campus.

The original was made up of 10 bells but these were not adequate for the playing of the Alma Mater and so more bells have been added through the years at the present time the carillon consists of 44 bells with 43 bells being a complete carillon.

Why walk on the grass? There are 26 miles of campus roadways and 46.5 miles of campus walks at MSU.

## JOIN A CAMPUS ORGANIZATION

## Travel...

THE EASY WAY

WITH A  FROM

### COLLEGE BIKE SHOP

134 N. Harrison

RENTALS

SERVICE

SALES

BICYCLES

MOTORCYCLES

## A CAMPUS TRADITION



## Redwood & Ross

IVY LEAGUE FASHIONS

### Suits—

WITH — NATURAL SHOULDERS  
PLEATLESS TROUSERS

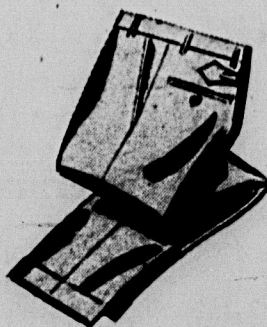
IN — IMPORTED ENGLISH WOOLS  
WORSTEDS  
SHETLANDS  
FLANNELS  
CHEVIOTS

from \$45<sup>00</sup> to \$75<sup>00</sup>

### Pleatless Slacks

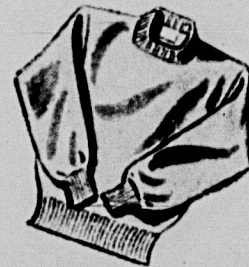
WITH

### Back Strap



from \$5<sup>95</sup>  
to  
\$15<sup>95</sup>

### Campus Styled Crewneck Sweaters



from \$7<sup>95</sup> to \$12<sup>95</sup>

Just clip the application, fill it out and mail to Redwood & Ross, East Lansing, Michigan. Open a convenient charge account now — the easy way. If under 21, have your parents sign — avoid delay.



**Redwood & Ross**

### APPLICATION FOR CREDIT

  
**Redwood & Ross**

30 DAY  
CHARGE ACCOUNT

Your Name \_\_\_\_\_ Age \_\_\_\_\_  
College \_\_\_\_\_ College Phone \_\_\_\_\_  
Home Town \_\_\_\_\_  
Address \_\_\_\_\_ Street \_\_\_\_\_ City \_\_\_\_\_ Phone \_\_\_\_\_  
Name of Parent or Guardian \_\_\_\_\_ Occupation of Parent \_\_\_\_\_  
Where are bills to be sent? \_\_\_\_\_ Payment to be made by ☐ Student ☐ Parent

Your Signature \_\_\_\_\_ Date \_\_\_\_\_  
Signature of Parent or Guardian \_\_\_\_\_ If Parent requests credit limit, place amount here. \$ \_\_\_\_\_

STORES AT  
ILLINOIS 619 East Green, Chicago, Ill.  
INDIANA 597 E. Kirkwood, Bloomington, Ind.  
MICHIGAN 205 E. Grand River, East Lansing, Mich.  
OHIO 1926 N. High, Columbus, Ohio  
WISCONSIN 619 State Street, Madison, Wisc.  
HOME OFFICE 308 E. Michigan, Kalamazoo, Mich.

NAME \_\_\_\_\_ ADDRESS \_\_\_\_\_ CITY \_\_\_\_\_  
NAME \_\_\_\_\_ ADDRESS \_\_\_\_\_ CITY \_\_\_\_\_  
BELOW FOR STORE USE ONLY  
O. K. By \_\_\_\_\_  
Record: \_\_\_\_\_



# Your Student Congress

# SAVE

## \$1 out of every \$4

on your textbooks  
buy USED at

"East Lansing's personallized bookstore"

### GIBSON'S UNIVERSITY BOOKSTORE

Don't miss our money saving coupon — Sect. D, page 2

All-University Student Government is the top student governing body of Michigan State. It is a wide open field for freshmen and provides an opportunity for leadership training. AUSG is divided similar to our local government.

The executive body is headed by the president, who appoints his cabinet members with the approval of Congress.

President Marie Gleason and his executive personnel have their headquarters in the Union.

Each executive cabinet member performs a specific duty and is responsible to Gleason.

Executive cabinet positions are administrative, academic, and heads of organizations, personal, orientation, elections, public relations, academic benefits, Campus Chest, high school cooperation and Spartan Spirit.

The second main branch of the local government is Student Congress.

There are 54 student representatives. They are elected from each living unit, the number depending on the population of the living unit.

Each representative attends the weekly meetings and takes part in the law-making end of government. The meetings are usually full of debate and give both the representatives and on-lookers an interesting evening.

Members are chosen at the spring election from dormitories, fraternities, sororities, co-operatives, married housing, East Lansing and Lansing.

Each representative works on a standing committee. They are Congress Business and State Affairs, Elections, Finance, Organizations, Student Rights and Welfare, Traffic and Committee on Committees.

Bills which are introduced to Congress are usually referred to these committees for consideration.

Here they are given further consideration before the Congress votes on them. The bills which Congress passes may be carried out by the executive department.

Another type of legislation which the Congress deals with is resolutions. These are proposals that something be considered or be approved by the administration.

Congress also approves appointments of the executive and members of the Judiciary.

Congress is presided over by William Leary, speaker of the house, who conducts the meetings. Russ Ingraham is speaker pro-tem and Lallie Bailey is secretary.

The third main branch of the local government is the Judiciary.

It rules on the actions of the legislative and the executive branch. It hears appeals from the men's and women's view boards.

It also hears student disciplinary cases on student request.

Through revisions of the constitution the Judiciary has become the highest court of appeal.

Two justices, two judges and two clerks, who have offices of appeal, make up the student element of the Judiciary. Two members of the Dean of Students' office are also members of the court.

These three units, Congress, Executive and Judiciary, comprise Michigan State's University Student Government.

## Complete Medical, Psychiatric Service

### Students' Health

### Concern of Olin

Olin Memorial Health Center, located on the north edge of the campus, provides Michigan State students with a complete medical and psychiatric service.

Any full-time student (carrying more than 10 credits) is eligible for treatment at the Health Center.

A fee of 25 cents is charged per visit. Students requesting service after 7 p.m. are required to pay a \$1 fee.

Office hours of the center are 8-11 a.m. and 2-5 p.m., on week days. Emergency cases are taken at any time of year.

Any student may be hospitalized for a total of 40 days in a single room without charge.

After that, a flat \$12 per day charge is made.

A student in need of the services of the Health Center reports to the receiving desk and presents his ID card and pays the 25 cent fee.

The university won't pay for ambulance service unless the injury occurs in required classroom work or employment.

If the doctor prescribes medical supplies, they can be picked up at a pharmacy in the Health Center at no cost.

If the malady is serious or contagious, the student may be confined to the Health Center overnight — or longer. In such a case the student's roommate will be contacted and his parents in serious cases.

The center has six physicians. Consultants may be called at the Medical Director's discretion and the fee must be paid by the student. Surgical expenses, except for minor surgery, also must be paid by the student.

The staff also has one full-time psychiatrist with three social psychiatric workers and 24 nurses.

A new three-story addition has been put into operation recently which added 140 beds and new offices and examination rooms.

The new section has air-conditioned rooms for asthmatic patients and several new features and improvements on existing facilities.

### WELCOME STUDENTS

- high fidelity music systems
- tape recorders
- at catalog prices

### TAPE RECORDING INDUSTRIES

5535 E. Michigan

ED 2-1113

— Open Monday Evenings —

... owned by MSU engineering graduates ...

AUSG is the Judiciary.

It rules on the actions of the legislative and the executive branch. It hears appeals from the men's and women's view boards.

It also hears student disciplinary cases on student request.

Through revisions of the constitution the Judiciary has become the highest court of appeal.

Two justices, two judges and two clerks, who have offices of appeal, make up the student element of the Judiciary. Two members of the Dean of Students' office are also members of the court.

These three units, Congress, Executive and Judiciary, comprise Michigan State's University Student Government.

Each representative works on a standing committee. They are Congress Business and State Affairs, Elections, Finance, Organizations, Student Rights and Welfare, Traffic and Committee on Committees.

Bills which are introduced to Congress are usually referred to these committees for consideration.

Here they are given further consideration before the Congress votes on them. The bills which Congress passes may be carried out by the executive department.

Another type of legislation which the Congress deals with is resolutions. These are proposals that something be considered or be approved by the administration.

Congress also approves appointments of the executive and members of the Judiciary.

Congress is presided over by William Leary, speaker of the house, who conducts the meetings. Russ Ingraham is speaker pro-tem and Lallie Bailey is secretary.

The third main branch of the local government is the Judiciary.

It rules on the actions of the legislative and the executive branch. It hears appeals from the men's and women's view boards.

It also hears student disciplinary cases on student request.

Through revisions of the constitution the Judiciary has become the highest court of appeal.

Two justices, two judges and two clerks, who have offices of appeal, make up the student element of the Judiciary. Two members of the Dean of Students' office are also members of the court.

These three units, Congress, Executive and Judiciary, comprise Michigan State's University Student Government.

Each representative works on a standing committee. They are Congress Business and State Affairs, Elections, Finance, Organizations, Student Rights and Welfare, Traffic and Committee on Committees.

Bills which are introduced to Congress are usually referred to these committees for consideration.

Here they are given further consideration before the Congress votes on them. The bills which Congress passes may be carried out by the executive department.

Another type of legislation which the Congress deals with is resolutions. These are proposals that something be considered or be approved by the administration.

Congress also approves appointments of the executive and members of the Judiciary.

Congress is presided over by William Leary, speaker of the house, who conducts the meetings. Russ Ingraham is speaker pro-tem and Lallie Bailey is secretary.

The third main branch of the local government is the Judiciary.

It rules on the actions of the legislative and the executive branch. It hears appeals from the men's and women's view boards.

It also hears student disciplinary cases on student request.

Through revisions of the constitution the Judiciary has become the highest court of appeal.

Two justices, two judges and two clerks, who have offices of appeal, make up the student element of the Judiciary. Two members of the Dean of Students' office are also members of the court.

These three units, Congress, Executive and Judiciary, comprise Michigan State's University Student Government.

Each representative works on a standing committee. They are Congress Business and State Affairs, Elections, Finance, Organizations, Student Rights and Welfare, Traffic and Committee on Committees.

Bills which are introduced to Congress are usually referred to these committees for consideration.

Here they are given further consideration before the Congress votes on them. The bills which Congress passes may be carried out by the executive department.

Another type of legislation which the Congress deals with is resolutions. These are proposals that something be considered or be approved by the administration.

Congress also approves appointments of the executive and members of the Judiciary.

Congress is presided over by William Leary, speaker of the house, who conducts the meetings. Russ Ingraham is speaker pro-tem and Lallie Bailey is secretary.

The third main branch of the local government is the Judiciary.

It rules on the actions of the legislative and the executive branch. It hears appeals from the men's and women's view boards.

It also hears student disciplinary cases on student request.

Through revisions of the constitution the Judiciary has become the highest court of appeal.

Two justices, two judges and two clerks, who have offices of appeal, make up the student element of the Judiciary. Two members of the Dean of Students' office are also members of the court.

These three units, Congress, Executive and Judiciary, comprise Michigan State's University Student Government.

Each representative works on a standing committee. They are Congress Business and State Affairs, Elections, Finance, Organizations, Student Rights and Welfare, Traffic and Committee on Committees.

Bills which are introduced to Congress are usually referred to these committees for consideration.

Here they are given further consideration before the Congress votes on them. The bills which Congress passes may be carried out by the executive department.

Another type of legislation which the Congress deals with is resolutions. These are proposals that something be considered or be approved by the administration.

Congress also approves appointments of the executive and members of the Judiciary.

Congress is presided over by William Leary, speaker of the house, who conducts the meetings. Russ Ingraham is speaker pro-tem and Lallie Bailey is secretary.

The third main branch of the local government is the Judiciary.

It rules on the actions of the legislative and the executive branch. It hears appeals from the men's and women's view boards.

It also hears student disciplinary cases on student request.

# THE INTER-FRATERNITY COUNCIL

## Welcomes All New Men to MSU

### Calendar of Events

TUESDAY, OCTOBER 1	• • •	'Introduction to Fraternities'	7:00 - 8:15 p.m.	Music Auditorium
WEDNESDAY, OCTOBER 2	• • •	IFC Open Rush Smoker	7:30 - 9:30 p.m.	2nd Floor, Union Bldg.
MONDAY, OCTOBER 7	• • •	Open Rush Smokers	7:30 - 9:30 p.m.	All Fraternities West of and on Abbott Road
TUESDAY, OCTOBER 8	• • •	Open Rush Smokers	7:30 - 9:30 p.m.	All Fraternities East of Abbott Road
WEDNESDAY, OCTOBER 9	• • •	Open Rush Smokers	7:30 - 9:30 p.m.	All Fraternities



## Placement Bureau

Students who need work during the school year, summer employment or after-graduation jobs find the MSU Placement Bureau a real friend.

The bureau is located in Merrill Hall and contains extensive files of jobs available on and off campus and in firms looking for graduates.

Last year the bureau handled more than 6,000 part-time job opportunities during the school year and had available more than 5,000 summer jobs for students.

The total job opportunities for graduates reached 45,000.

Campus work pays 90 cents per hour and includes jobs in dormitories, cafeterias, the library and school offices. Students living in dorms may work in their own dorm.

Many living units provide a plan where men may work a whole meal period in return for a meal while others pay a flat fee per hour.

Off-campus jobs average about \$1 and hour. Most of the Lansing and East Lansing work for women consists of office work while janitor and merchandising work is available for men.

Temporary work in tutoring, baby-sitting, typing and odd jobs are also available through the bureau.

Students working during the school term are restricted to 20 hours per week. To exceed the limit, permission must be obtained from the Dean of Students Office.

Students seeking jobs may either refer to the Bureau's bulletin board and files or register with the bureau for a particular type of job.

Placement officials recommend that students wait until they have their schedules before they apply for jobs.

New students who want full term employment should check the bulletin board in the placement center in Merrill Hall.

## Scholarship Maybe?

As you don't know where the money is coming from to get through school? MSU's scholarship program may be the answer.

This scholarship program is administered through the Scholarship Office, section A, room 10, Wells Hall.

Scholarships are awarded to qualified students who have demonstrated ability in scholastic performance, citizenship and extra-curricular activities.

Entrance scholarships are granted for one year and if the student maintains a grade point average of 2.5 or above it is extended. The second year a 2.5 is needed to receive the third year scholarship and a 3-point must be made the third year to receive the scholarship for the fourth year.

A 2-point is a "C", a 3-point is a "B". For example, if you carry eight credits with "B" grades, and eight credits with "C" grades, your point average would be 2.5.

To receive the entrance scholarship the student must carry at least 12 credits and if the student withdraws from school or attends summer school, the scholarship office must be notified.

Students who have completed three terms of 50 credit hours and transfer students with one term's work, may apply for scholarships if they exhibit an outstanding academic record, leadership ability and financial need. Applications must be made between the beginning of spring term and May 17, for the type of scholarship.

The kinds of scholarships offered are the superior student and the Hinman awards. Both resident and out-of-state students qualify for the superior student scholarship which pays the tuition fees.

The Hinman awards are limited to Mich., Ohio, Ind., Ill., Wis. and Ontario residents. The award varies from \$150 to \$450 per year and students already holding one scholarship are eligible for the Hinman award.

Scholarship recipients are expected to utilize careful budgeting of their expenditures and to

forego luxuries in order to attain their primary goal—university education. It is also expected that all applicants will be earning a portion of their college expenses.

All candidates are judged on a comparative basis.

There are also funds available to students who will need financial aid during the year. Aid will not be given, however, until the case has been thoroughly checked by the scholarship office.

The new alumni award to the top 10 of 600 finalists of Michigan's outstanding seniors. Called the Alumni Distinguished Scholarship award, it is worth \$1,000.

Five General Motors scholarships go to students finishing in the top one percent in the national scholarship qualifying test.

There are certain scholarships that are granted under conditions prescribed by the donor. These endowment scholarships are used generally as grants-in-aid and the scholarship committee requires that the student be enrolled for one year and show academic ability as well as financial need to the point that the applicant could not remain in school without this aid.

Other scholarships available are the 4-H, Foreign Tuition and special departmental grants.

**PAIGE CRAFT**

**CHEVROLET**

For All Your  
Automotive  
Needs

See

**BUD KOUTS**  
**CHEVROLET**

2081 E. Michigan Avenue  
Use Our Budget Plan

**SHOE SHINE**  
**FOUR BARBERS**  
**Dohm's Barber Shop**  
FRANDOR CENTER



**Campus 4-H Club**  
**Welcomes Freshmen**

AT THE

**4-H ROUND-UP**

**OCTOBER 4**

**FORESTRY CABIN**

**SEE YOU THERE**

# Welcome... "Class of 1961"

THEME: College Plans

PERIOD: Fall Term 1957

BY: A Freshman-to-be

MY FUTURE

Now that I've graduated from high school, it's time for me to plan

what I want to be when I get out of college. I think I'd like to be

an advertising copy writer, because I like to write themes and essays.

It's such a glamorous job where you meet important people, do interesting

work and make lots of money. *After you're "arrived," my dear.*

I know that first I have to choose the right courses and study hard. *Right the first time!*

And just imagine going to MSU and to Lansing, the capital/capitol of the

state. MSU has such a big, beautiful campus, and classes are only part

of the fun. There are so many activities to dress for, but I won't have

to worry about my wardrobe, because I've already

heard about Knapp's, in downtown

Lansing, being the center for

college fashions. After I register

for classes, the first thing I'm

going to do is get a new rugged,

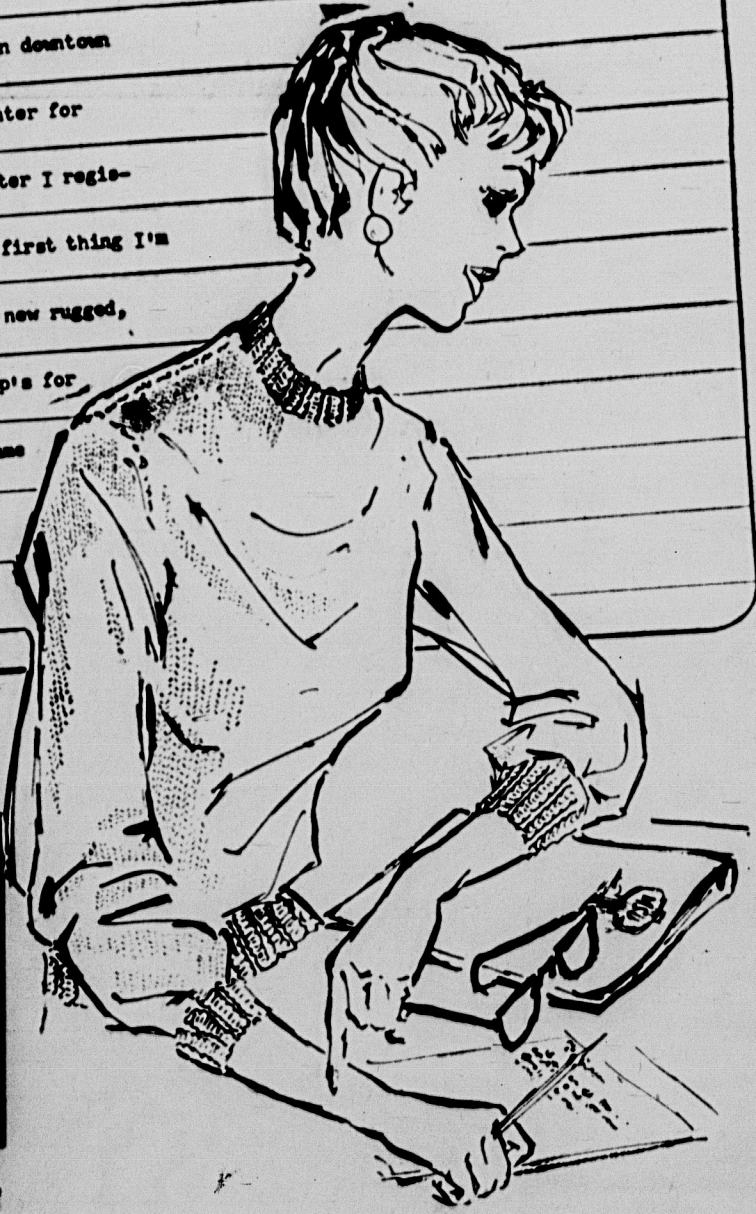
bulky knit from Knapp's for

State's first big game

with Indiana.

*"You'll have  
lots of fun  
studying too!"*

*Smart girl!  
you'll find  
more of all new  
and latest fashions  
for  
campus  
living at a  
price you can't  
pay at Knapp's*



Knapp's, Downtown Lansing is Open

9:30 to 5:30 p.m. on Tues., Wed., Thurs., Sat.  
Open Monday 12 to 9 p.m. - Friday 9:30 to 9 p.m.



## APO Aims at Saving Sod

Spokane, Wash. (UPI)—The Alpha Phi Omega chapter at the University of Idaho is planning to save the state of Idaho from the sod tax by selling sod water.

The chapter is planning to sell sod water in the state of Idaho. The sod water is made from natural springs in the state of Idaho. The chapter is planning to sell the sod water in the state of Idaho.

The chapter is planning to sell the sod water in the state of Idaho. The sod water is made from natural springs in the state of Idaho. The chapter is planning to sell the sod water in the state of Idaho.

The chapter is planning to sell the sod water in the state of Idaho. The sod water is made from natural springs in the state of Idaho. The chapter is planning to sell the sod water in the state of Idaho.

The chapter is planning to sell the sod water in the state of Idaho. The sod water is made from natural springs in the state of Idaho. The chapter is planning to sell the sod water in the state of Idaho.

The chapter is planning to sell the sod water in the state of Idaho. The sod water is made from natural springs in the state of Idaho. The chapter is planning to sell the sod water in the state of Idaho.

The chapter is planning to sell the sod water in the state of Idaho. The sod water is made from natural springs in the state of Idaho. The chapter is planning to sell the sod water in the state of Idaho.

The chapter is planning to sell the sod water in the state of Idaho. The sod water is made from natural springs in the state of Idaho. The chapter is planning to sell the sod water in the state of Idaho.

The chapter is planning to sell the sod water in the state of Idaho. The sod water is made from natural springs in the state of Idaho. The chapter is planning to sell the sod water in the state of Idaho.

The chapter is planning to sell the sod water in the state of Idaho. The sod water is made from natural springs in the state of Idaho. The chapter is planning to sell the sod water in the state of Idaho.

The chapter is planning to sell the sod water in the state of Idaho. The sod water is made from natural springs in the state of Idaho. The chapter is planning to sell the sod water in the state of Idaho.

The chapter is planning to sell the sod water in the state of Idaho. The sod water is made from natural springs in the state of Idaho. The chapter is planning to sell the sod water in the state of Idaho.

The chapter is planning to sell the sod water in the state of Idaho. The sod water is made from natural springs in the state of Idaho. The chapter is planning to sell the sod water in the state of Idaho.

The chapter is planning to sell the sod water in the state of Idaho. The sod water is made from natural springs in the state of Idaho. The chapter is planning to sell the sod water in the state of Idaho.

The chapter is planning to sell the sod water in the state of Idaho. The sod water is made from natural springs in the state of Idaho. The chapter is planning to sell the sod water in the state of Idaho.

The chapter is planning to sell the sod water in the state of Idaho. The sod water is made from natural springs in the state of Idaho. The chapter is planning to sell the sod water in the state of Idaho.

The chapter is planning to sell the sod water in the state of Idaho. The sod water is made from natural springs in the state of Idaho. The chapter is planning to sell the sod water in the state of Idaho.

The chapter is planning to sell the sod water in the state of Idaho. The sod water is made from natural springs in the state of Idaho. The chapter is planning to sell the sod water in the state of Idaho.



Previous coordinator of MST is Louise Reschner, Okemos, Mich., who is making in radio TV news and service organizations involved in orientation look to her to avoid confusion. A member of the Organizations Steering Committee, Louise is a Kappa Alpha Theta and daughter of a MST not professor being Reschner.

## They Can Help You

# Counseling Center Is Available

Students who transfer, who have been previously involved in the services of the Center, and who are available to the Center, are available to the Center.

The Center is available to the Center. The Center is available to the Center. The Center is available to the Center.

The Center is available to the Center. The Center is available to the Center. The Center is available to the Center.

The Center is available to the Center. The Center is available to the Center. The Center is available to the Center.

The Center is available to the Center. The Center is available to the Center. The Center is available to the Center.

The Center is available to the Center. The Center is available to the Center. The Center is available to the Center.

The Center is available to the Center. The Center is available to the Center. The Center is available to the Center.

The Center is available to the Center. The Center is available to the Center. The Center is available to the Center.

The Center is available to the Center. The Center is available to the Center. The Center is available to the Center.

The Center is available to the Center. The Center is available to the Center. The Center is available to the Center.

The Center is available to the Center. The Center is available to the Center. The Center is available to the Center.

The Center is available to the Center. The Center is available to the Center. The Center is available to the Center.

The Center is available to the Center. The Center is available to the Center. The Center is available to the Center.

The Center is available to the Center. The Center is available to the Center. The Center is available to the Center.

The Center is available to the Center. The Center is available to the Center. The Center is available to the Center.

The Center is available to the Center. The Center is available to the Center. The Center is available to the Center.

The Center is available to the Center. The Center is available to the Center. The Center is available to the Center.

The Center is available to the Center. The Center is available to the Center. The Center is available to the Center.

The Center is available to the Center. The Center is available to the Center. The Center is available to the Center.

The Center is available to the Center. The Center is available to the Center. The Center is available to the Center.

The Center is available to the Center. The Center is available to the Center. The Center is available to the Center.

The Center is available to the Center. The Center is available to the Center. The Center is available to the Center.

The Center is available to the Center. The Center is available to the Center. The Center is available to the Center.

The Center is available to the Center. The Center is available to the Center. The Center is available to the Center.

The Center is available to the Center. The Center is available to the Center. The Center is available to the Center.

The Center is available to the Center. The Center is available to the Center. The Center is available to the Center.

The Center is available to the Center. The Center is available to the Center. The Center is available to the Center.

The Center is available to the Center. The Center is available to the Center. The Center is available to the Center.

The Center is available to the Center. The Center is available to the Center. The Center is available to the Center.

Students who transfer, who have been previously involved in the services of the Center, and who are available to the Center, are available to the Center.

The Center is available to the Center. The Center is available to the Center. The Center is available to the Center.

The Center is available to the Center. The Center is available to the Center. The Center is available to the Center.

The Center is available to the Center. The Center is available to the Center. The Center is available to the Center.

The Center is available to the Center. The Center is available to the Center. The Center is available to the Center.

The Center is available to the Center. The Center is available to the Center. The Center is available to the Center.

The Center is available to the Center. The Center is available to the Center. The Center is available to the Center.

The Center is available to the Center. The Center is available to the Center. The Center is available to the Center.

The Center is available to the Center. The Center is available to the Center. The Center is available to the Center.

The Center is available to the Center. The Center is available to the Center. The Center is available to the Center.

The Center is available to the Center. The Center is available to the Center. The Center is available to the Center.

The Center is available to the Center. The Center is available to the Center. The Center is available to the Center.

The Center is available to the Center. The Center is available to the Center. The Center is available to the Center.

The Center is available to the Center. The Center is available to the Center. The Center is available to the Center.

The Center is available to the Center. The Center is available to the Center. The Center is available to the Center.

The Center is available to the Center. The Center is available to the Center. The Center is available to the Center.

The Center is available to the Center. The Center is available to the Center. The Center is available to the Center.

The Center is available to the Center. The Center is available to the Center. The Center is available to the Center.

The Center is available to the Center. The Center is available to the Center. The Center is available to the Center.

The Center is available to the Center. The Center is available to the Center. The Center is available to the Center.

The Center is available to the Center. The Center is available to the Center. The Center is available to the Center.

The Center is available to the Center. The Center is available to the Center. The Center is available to the Center.

The Center is available to the Center. The Center is available to the Center. The Center is available to the Center.

The Center is available to the Center. The Center is available to the Center. The Center is available to the Center.

The Center is available to the Center. The Center is available to the Center. The Center is available to the Center.

The Center is available to the Center. The Center is available to the Center. The Center is available to the Center.

The Center is available to the Center. The Center is available to the Center. The Center is available to the Center.

The Center is available to the Center. The Center is available to the Center. The Center is available to the Center.

The Center is available to the Center. The Center is available to the Center. The Center is available to the Center.

Students who transfer, who have been previously involved in the services of the Center, and who are available to the Center, are available to the Center.

The Center is available to the Center. The Center is available to the Center. The Center is available to the Center.

The Center is available to the Center. The Center is available to the Center. The Center is available to the Center.

The Center is available to the Center. The Center is available to the Center. The Center is available to the Center.

The Center is available to the Center. The Center is available to the Center. The Center is available to the Center.

The Center is available to the Center. The Center is available to the Center. The Center is available to the Center.

The Center is available to the Center. The Center is available to the Center. The Center is available to the Center.

The Center is available to the Center. The Center is available to the Center. The Center is available to the Center.

The Center is available to the Center. The Center is available to the Center. The Center is available to the Center.

The Center is available to the Center. The Center is available to the Center. The Center is available to the Center.

The Center is available to the Center. The Center is available to the Center. The Center is available to the Center.

The Center is available to the Center. The Center is available to the Center. The Center is available to the Center.

The Center is available to the Center. The Center is available to the Center. The Center is available to the Center.

The Center is available to the Center. The Center is available to the Center. The Center is available to the Center.

The Center is available to the Center. The Center is available to the Center. The Center is available to the Center.

The Center is available to the Center. The Center is available to the Center. The Center is available to the Center.

The Center is available to the Center. The Center is available to the Center. The Center is available to the Center.

The Center is available to the Center. The Center is available to the Center. The Center is available to the Center.

The Center is available to the Center. The Center is available to the Center. The Center is available to the Center.

The Center is available to the Center. The Center is available to the Center. The Center is available to the Center.

The Center is available to the Center. The Center is available to the Center. The Center is available to the Center.

The Center is available to the Center. The Center is available to the Center. The Center is available to the Center.

The Center is available to the Center. The Center is available to the Center. The Center is available to the Center.

The Center is available to the Center. The Center is available to the Center. The Center is available to the Center.

The Center is available to the Center. The Center is available to the Center. The Center is available to the Center.

The Center is available to the Center. The Center is available to the Center. The Center is available to the Center.

The Center is available to the Center. The Center is available to the Center. The Center is available to the Center.

The Center is available to the Center. The Center is available to the Center. The Center is available to the Center.

The Center is available to the Center. The Center is available to the Center. The Center is available to the Center.

The Center is available to the Center. The Center is available to the Center. The Center is available to the Center.

Students who transfer, who have been previously involved in the services of the Center, and who are available to the Center, are available to the Center.

The Center is available to the Center. The Center is available to the Center. The Center is available to the Center.

The Center is available to the Center. The Center is available to the Center. The Center is available to the Center.

The Center is available to the Center. The Center is available to the Center. The Center is available to the Center.

The Center is available to the Center. The Center is available to the Center. The Center is available to the Center.

The Center is available to the Center. The Center is available to the Center. The Center is available to the Center.

The Center is available to the Center. The Center is available to the Center. The Center is available to the Center.

The Center is available to the Center. The Center is available to the Center. The Center is available to the Center.

The Center is available to the Center. The Center is available to the Center. The Center is available to the Center.

The Center is available to the Center. The Center is available to the Center. The Center is available to the Center.

The Center is available to the Center. The Center is available to the Center. The Center is available to the Center.

The Center is available to the Center. The Center is available to the Center. The Center is available to the Center.

The Center is available to the Center. The Center is available to the Center. The Center is available to the Center.

The Center is available to the Center. The Center is available to the Center. The Center is available to the Center.

The Center is available to the Center. The Center is available to the Center. The Center is available to the Center.

The Center is available to the Center. The Center is available to the Center. The Center is available to the Center.

The Center is available to the Center. The Center is available to the Center. The Center is available to the Center.

The Center is available to the Center. The Center is available to the Center. The Center is available to the Center.

The Center is available to the Center. The Center is available to the Center. The Center is available to the Center.

The Center is available to the Center. The Center is available to the Center. The Center is available to the Center.

The Center is available to the Center. The Center is available to the Center. The Center is available to the Center.

The Center is available to the Center. The Center is available to the Center. The Center is available to the Center.

The Center is available to the Center. The Center is available to the Center. The Center is available to the Center.

The Center is available to the Center. The Center is available to the Center. The Center is available to the Center.

The Center is available to the Center. The Center is available to the Center. The Center is available to the Center.

The Center is available to the Center. The Center is available to the Center. The Center is available to the Center.

The Center is available to the Center. The Center is available to the Center. The Center is available to the Center.

The Center is available to the Center. The Center is available to the Center. The Center is available to the Center.

The Center is available to the Center. The Center is available to the Center. The Center is available to the Center.

The Center is available to the Center. The Center is available to the Center. The Center is available to the Center.



A boost to the morale of almost 600 Ohioans training at Phelps Collins Air National Guard Base, Alpena, Mich., was a visit by Air Force (left) and Air Force (right) both of Hillman, Mich. Both will be sophomores this fall at Michigan State University. They attended an open house at the Guard base and posed on the wing of an F-84F jet fighter.

New or Used. They Read the Same

## Text Books: Your Life

Text books will be a major part of your college life and buying them will be one of your first expenses when classes begin.

All of the texts used in State can be bought new and almost all of them can be purchased cheaper by getting used books.

The Union Bookstore, located on the first floor of the Union, is the official school book store and both new and used texts may be bought there.

In addition, a part of commercial stores, Campus Bookstore and University Bookstore, must both new and used texts and specializing in used books.

Both stores are located on Grand River Avenue across from the Union.

A good source of used books is the STUN organization run by students.

Helping the students save money is the function of STUN.

Student Text Used and New, located in Quincent 52 near the MKAR-TV station.

This non-profit organization, sponsored by AMS Activities Board and Men's Activities Council, allows students to buy their own price on used text books.

Students are urged to set the price at 65 percent of the original cost, which is more than the book stores pay. STUN adds a 10 cent handling cost, enabling students to buy them economically.

If a book is sold, the student receives the money. If not, the book may be picked up later.

STUN will be open on Sept. 27, 28, 30, and Oct. 1 in Quincent 52. To make this service more convenient for all, the location will be changed to the new Student Services building winter term.

P  
I  
Z  
Z  
A



A LITTLE BIT OF OLD ITALY

- PIZZA
- SPAGHETTI
- RAVIOLI
- SUBMARINES

**CASA NOVA PIZZERIA**  
DELIVERY

211 MAC

TO EAST LANSING  
AND ALL DORMS

ED 2-0655

"EAST LANSING'S OLDEST PIZZERIA"

P  
I  
Z  
Z  
A

## COLLEGE TRAVEL OFFICE

—WELCOME—

TO ALL FRESHMAN STUDENTS

Your local office for all airline and steamship companies has a professional staff ready to serve your travel information, reservation, and ticketing needs.

Join the Student Travel program which will feature group trips to Bermuda and Europe during Spring vacation, and to all of Europe during Summer holidays. A special feature will be the Summer Term for coeds at the University of Hawaii in 1958.

130 WEST GRAND RIVER

ED 2-8667

# ELIMINATE

## STANDING IN LINE

# THE UNION BOOKSTORE KEYNOTES SELF-SERVICE

Yes, the Union Book Store featuring self-service, means you simply check in...choose your books and supplies...check out

the Union Book Store also features...

- MSU Animal Souvenirs
- MSU Decals
- MSU Sportswear
- Art Supplies
- MSU Blankets
- Textbooks for every course
- Engineering and Science Supplies

**UNION BOOK STORE**

**Union Building**







# Basic College

A broad general education is provided for every Michigan State freshman through the facilities of the Basic College.

Each MSU student must complete at least 30 hours of work in the Basic College over a span of the first two years of school. The work is divided into four areas of specialization — Social Science, Humanities, Natural Science, and Communication Skills.

Each of the four areas of specialization has three levels of work. The first level is the most general, the second is more specialized, and the third is the most advanced. The student is free to choose the level of work that best fits his interests and abilities.

The course is designed to give the student a broad background in the social sciences, humanities, natural sciences, and communication skills. It is a requirement for all MSU students.

A term paper, which requires a solid foundation for future research work, must be completed during the course. The student is free to choose the topic of his term paper.

Students are encouraged to take advantage of the many opportunities for research and study available at MSU.

A study of the history of the college is also a part of the course. It is a requirement for all MSU students.

The Basic College is a requirement for all MSU students. It is a broad general education program.

The Basic College is a requirement for all MSU students. It is a broad general education program.

The Basic College is a requirement for all MSU students. It is a broad general education program.

The Basic College is a requirement for all MSU students. It is a broad general education program.

The Basic College is a requirement for all MSU students. It is a broad general education program.

The new Dean Edward Carlin, who has been at MSU since 1957, has been named as the new Dean of the Basic College.

Dean Thomas Hamilton, who has been at MSU since 1957, has been named as the new Dean of the Basic College.

Dean Thomas Hamilton, who has been at MSU since 1957, has been named as the new Dean of the Basic College.

Dean Thomas Hamilton, who has been at MSU since 1957, has been named as the new Dean of the Basic College.

Dean Thomas Hamilton, who has been at MSU since 1957, has been named as the new Dean of the Basic College.

Dean Thomas Hamilton, who has been at MSU since 1957, has been named as the new Dean of the Basic College.

Dean Thomas Hamilton, who has been at MSU since 1957, has been named as the new Dean of the Basic College.

Dean Thomas Hamilton, who has been at MSU since 1957, has been named as the new Dean of the Basic College.

Dean Thomas Hamilton, who has been at MSU since 1957, has been named as the new Dean of the Basic College.

Dean Thomas Hamilton, who has been at MSU since 1957, has been named as the new Dean of the Basic College.

Dean Thomas Hamilton, who has been at MSU since 1957, has been named as the new Dean of the Basic College.

Dean Thomas Hamilton, who has been at MSU since 1957, has been named as the new Dean of the Basic College.

Dean Thomas Hamilton, who has been at MSU since 1957, has been named as the new Dean of the Basic College.

Dean Thomas Hamilton, who has been at MSU since 1957, has been named as the new Dean of the Basic College.

Dean Thomas Hamilton, who has been at MSU since 1957, has been named as the new Dean of the Basic College.



Dean Carlin

Dr. Edward A. Carlin, Dean of the Basic College and Director of the Summer School at Michigan State University, is shown in a portrait.

Dr. Edward A. Carlin, Dean of the Basic College and Director of the Summer School at Michigan State University, is shown in a portrait.

Dr. Edward A. Carlin, Dean of the Basic College and Director of the Summer School at Michigan State University, is shown in a portrait.

Dr. Edward A. Carlin, Dean of the Basic College and Director of the Summer School at Michigan State University, is shown in a portrait.

Dr. Edward A. Carlin, Dean of the Basic College and Director of the Summer School at Michigan State University, is shown in a portrait.

Dr. Edward A. Carlin, Dean of the Basic College and Director of the Summer School at Michigan State University, is shown in a portrait.

Dr. Edward A. Carlin, Dean of the Basic College and Director of the Summer School at Michigan State University, is shown in a portrait.

Dr. Edward A. Carlin, Dean of the Basic College and Director of the Summer School at Michigan State University, is shown in a portrait.

Dr. Edward A. Carlin, Dean of the Basic College and Director of the Summer School at Michigan State University, is shown in a portrait.

Dr. Edward A. Carlin, Dean of the Basic College and Director of the Summer School at Michigan State University, is shown in a portrait.

Dr. Edward A. Carlin, Dean of the Basic College and Director of the Summer School at Michigan State University, is shown in a portrait.

Dr. Edward A. Carlin, Dean of the Basic College and Director of the Summer School at Michigan State University, is shown in a portrait.

Dr. Edward A. Carlin, Dean of the Basic College and Director of the Summer School at Michigan State University, is shown in a portrait.

Dr. Edward A. Carlin, Dean of the Basic College and Director of the Summer School at Michigan State University, is shown in a portrait.

Dr. Edward A. Carlin, Dean of the Basic College and Director of the Summer School at Michigan State University, is shown in a portrait.

## Operation 'Moose Move'

# Museum Crew and Animals Complete Shift to New Home

A mass migration of animals across the Michigan State University campus, including such big game specimens as two moose, a bison, a grizzly bear, a black bear, and a wolf, was completed last week.

The animals, which were housed in the old museum building, were moved to the new quarters, which are located in the basement of the new building.

The animals, which were housed in the old museum building, were moved to the new quarters, which are located in the basement of the new building.

The animals, which were housed in the old museum building, were moved to the new quarters, which are located in the basement of the new building.

The animals, which were housed in the old museum building, were moved to the new quarters, which are located in the basement of the new building.

The animals, which were housed in the old museum building, were moved to the new quarters, which are located in the basement of the new building.

The animals, which were housed in the old museum building, were moved to the new quarters, which are located in the basement of the new building.

The animals, which were housed in the old museum building, were moved to the new quarters, which are located in the basement of the new building.

The animals, which were housed in the old museum building, were moved to the new quarters, which are located in the basement of the new building.

The animals, which were housed in the old museum building, were moved to the new quarters, which are located in the basement of the new building.

The animals, which were housed in the old museum building, were moved to the new quarters, which are located in the basement of the new building.

The animals, which were housed in the old museum building, were moved to the new quarters, which are located in the basement of the new building.

The animals, which were housed in the old museum building, were moved to the new quarters, which are located in the basement of the new building.

The animals, which were housed in the old museum building, were moved to the new quarters, which are located in the basement of the new building.

The animals, which were housed in the old museum building, were moved to the new quarters, which are located in the basement of the new building.

The animals, which were housed in the old museum building, were moved to the new quarters, which are located in the basement of the new building.

The animals, which were housed in the old museum building, were moved to the new quarters, which are located in the basement of the new building.

The animals, which were housed in the old museum building, were moved to the new quarters, which are located in the basement of the new building.

The animals, which were housed in the old museum building, were moved to the new quarters, which are located in the basement of the new building.

The animals, which were housed in the old museum building, were moved to the new quarters, which are located in the basement of the new building.

The animals, which were housed in the old museum building, were moved to the new quarters, which are located in the basement of the new building.

The animals, which were housed in the old museum building, were moved to the new quarters, which are located in the basement of the new building.

progress in Michigan farm and home conservation and biological principles will be displayed along with temporary groupings. The receptionist will be located on the first floor also.

Most feature of the second floor will be the colorful Hall of North American Life, featuring the authentic habitat of the animals in their natural surroundings.

Under the direction of Dr. John W. Hope, the hall will feature the authentic habitat of the animals in their natural surroundings.

Under the direction of Dr. John W. Hope, the hall will feature the authentic habitat of the animals in their natural surroundings.

Under the direction of Dr. John W. Hope, the hall will feature the authentic habitat of the animals in their natural surroundings.

Under the direction of Dr. John W. Hope, the hall will feature the authentic habitat of the animals in their natural surroundings.

Under the direction of Dr. John W. Hope, the hall will feature the authentic habitat of the animals in their natural surroundings.

Under the direction of Dr. John W. Hope, the hall will feature the authentic habitat of the animals in their natural surroundings.

Under the direction of Dr. John W. Hope, the hall will feature the authentic habitat of the animals in their natural surroundings.

Under the direction of Dr. John W. Hope, the hall will feature the authentic habitat of the animals in their natural surroundings.

Under the direction of Dr. John W. Hope, the hall will feature the authentic habitat of the animals in their natural surroundings.

Under the direction of Dr. John W. Hope, the hall will feature the authentic habitat of the animals in their natural surroundings.

Under the direction of Dr. John W. Hope, the hall will feature the authentic habitat of the animals in their natural surroundings.

Under the direction of Dr. John W. Hope, the hall will feature the authentic habitat of the animals in their natural surroundings.

Under the direction of Dr. John W. Hope, the hall will feature the authentic habitat of the animals in their natural surroundings.

Under the direction of Dr. John W. Hope, the hall will feature the authentic habitat of the animals in their natural surroundings.

Under the direction of Dr. John W. Hope, the hall will feature the authentic habitat of the animals in their natural surroundings.

Under the direction of Dr. John W. Hope, the hall will feature the authentic habitat of the animals in their natural surroundings.

Under the direction of Dr. John W. Hope, the hall will feature the authentic habitat of the animals in their natural surroundings.

Under the direction of Dr. John W. Hope, the hall will feature the authentic habitat of the animals in their natural surroundings.

Under the direction of Dr. John W. Hope, the hall will feature the authentic habitat of the animals in their natural surroundings.

Under the direction of Dr. John W. Hope, the hall will feature the authentic habitat of the animals in their natural surroundings.

to nearly all of the display cases. The museum staff and crew began packing up the hundreds of display items four months ago in anticipation of the move. Each exhibit is being moved in a specially designed container.

Each exhibit is being moved in a specially designed container. The museum staff and crew began packing up the hundreds of display items four months ago in anticipation of the move.

Each exhibit is being moved in a specially designed container. The museum staff and crew began packing up the hundreds of display items four months ago in anticipation of the move.

Each exhibit is being moved in a specially designed container. The museum staff and crew began packing up the hundreds of display items four months ago in anticipation of the move.

Each exhibit is being moved in a specially designed container. The museum staff and crew began packing up the hundreds of display items four months ago in anticipation of the move.

Each exhibit is being moved in a specially designed container. The museum staff and crew began packing up the hundreds of display items four months ago in anticipation of the move.

Each exhibit is being moved in a specially designed container. The museum staff and crew began packing up the hundreds of display items four months ago in anticipation of the move.

Each exhibit is being moved in a specially designed container. The museum staff and crew began packing up the hundreds of display items four months ago in anticipation of the move.

Each exhibit is being moved in a specially designed container. The museum staff and crew began packing up the hundreds of display items four months ago in anticipation of the move.

Each exhibit is being moved in a specially designed container. The museum staff and crew began packing up the hundreds of display items four months ago in anticipation of the move.

Each exhibit is being moved in a specially designed container. The museum staff and crew began packing up the hundreds of display items four months ago in anticipation of the move.

Each exhibit is being moved in a specially designed container. The museum staff and crew began packing up the hundreds of display items four months ago in anticipation of the move.

Each exhibit is being moved in a specially designed container. The museum staff and crew began packing up the hundreds of display items four months ago in anticipation of the move.

Each exhibit is being moved in a specially designed container. The museum staff and crew began packing up the hundreds of display items four months ago in anticipation of the move.

Each exhibit is being moved in a specially designed container. The museum staff and crew began packing up the hundreds of display items four months ago in anticipation of the move.

Each exhibit is being moved in a specially designed container. The museum staff and crew began packing up the hundreds of display items four months ago in anticipation of the move.

Each exhibit is being moved in a specially designed container. The museum staff and crew began packing up the hundreds of display items four months ago in anticipation of the move.

Each exhibit is being moved in a specially designed container. The museum staff and crew began packing up the hundreds of display items four months ago in anticipation of the move.

Each exhibit is being moved in a specially designed container. The museum staff and crew began packing up the hundreds of display items four months ago in anticipation of the move.

Each exhibit is being moved in a specially designed container. The museum staff and crew began packing up the hundreds of display items four months ago in anticipation of the move.

Each exhibit is being moved in a specially designed container. The museum staff and crew began packing up the hundreds of display items four months ago in anticipation of the move.

Each exhibit is being moved in a specially designed container. The museum staff and crew began packing up the hundreds of display items four months ago in anticipation of the move.



at the crossroads of Lansing, Michigan at Michigan

# WELCOME

Michigan State University

Come in . . . let's get acquainted. We have all first quality, popular prices . . . many nationally advertised brands and no money down. Ten months to pay.

Aldens . . . first in fashion for families since 1899

**Dr. Cecil L. Gatten**  
CHIROPRACTIC  
HEALTH SERVICE  
At Okemos  
2 miles East of Campus  
Phone ED 2-0618  
for appointment

**Announcement!**  
We are pleased to announce the opening of  
**Our New Cash & Carry Drive-In Location**  
LOCATED  
at 620 West Michigan Ave., East Lansing  
NORTH OF KELLOGG CENTER Plenty of Parking Space Available  
**COLLEGE CLEANERS**  
Phone ED 2-4713 (Formerly located at 301 Abbott Road, E. L.)

All Your Knitting  
Needs at  
**Kays**  
Knit Shop  
207 M.A.C. Ave.

**HOW MANY OF THESE CAMPUS EVENTS CAN YOU NAME?**

1. FOOTBALL PER LATE  
2. WINTER CARNIVAL  
3. RECEPTION  
4. SUBSTITUTION  
5. ACTIVITIES CARNIVAL  
6. ANNUITY ENGINEERS  
7. FOOTBALL PER LATE  
8. WINTER CARNIVAL  
9. RECEPTION  
10. SUBSTITUTION  
11. ACTIVITIES CARNIVAL  
12. ANNUITY ENGINEERS

**ANSWERS**

1. FOOTBALL PER LATE  
2. WINTER CARNIVAL  
3. RECEPTION  
4. SUBSTITUTION  
5. ACTIVITIES CARNIVAL  
6. ANNUITY ENGINEERS  
7. FOOTBALL PER LATE  
8. WINTER CARNIVAL  
9. RECEPTION  
10. SUBSTITUTION  
11. ACTIVITIES CARNIVAL  
12. ANNUITY ENGINEERS

Remember To Buy Your Copy Of The 1958 Wolverine At Registration This Fall . . . Only \$6.00

**On Michigan State's Campus nearly everyone buys the Wolverine**  
Your University Yearbook