

Read Daily by MSU's 25,000 Students and Faculty

The Michigan State News is published by students without direct faculty supervision. It is not the official voice of the university or of the student body, but while seeking to serve the best interests of both, it stands ready to battle any move which would drive a wedge between the two, whether it comes from within the university or from outside. Member of the Associated Press, Inland Daily Press, Intercollegiate Press Association and Associated College Press.

Vol. 49, No. 92 Friday, November 15, 1957 Page Two

Lag in Chest Drive Blamed on Students

Scanty support thus far in the 1957 Campus Chest Drive seems to indicate a general indifference toward this charity move organized and sponsored by representatives of the student body. Why is there such a lack of interest in considering the efforts made to promote a successful campaign?

During this year's drive student attention has been centered on securing the prizes awarded by "The Stroller." The amount collected for the various organizations seems to have become secondary.

The committee's aim in this project was to familiarize the whole campus with the more important event of raising funds for needy organizations.

Perhaps competition is needed. The students seem to want something for their donations. Is it necessary to give prizes to the living unit contributing the most? The object of the drive would seem to be helping others, not pulling glory for one's organization.

The drive asks student help only once a year. The money collected is distributed among three campus organizations. Must Campus Chest run separate drives to collect the necessary funds? The student body should remember that they are contributing to more than one organization when they give to Campus Chest. All this is done for the student's convenience.

The lack of charity on campus seems to show a lack of Spartan spirit. Spartan spirit isn't something to be taken to the Saturday football game with the old raccoon coat and then put back in the closet with the same after the game. Spartan spirit should always be prevalent on campus and should really come through for student sponsored organizations such as the Chest.

Campus Chest isn't run for our benefit alone. It also serves such worthwhile organizations as United Community Chest, World University Service, National Scholarship Service, American Cancer Society and the Muscular Dystrophy Association. It should be unnecessary to have to emphasize the importance of contributing to such organizations in this day and age.

Considering the amount of work put into the drive it should have been a success. Why wasn't it? It wasn't lack of effort on the part of AISC, "The Stroller" and the various events of kick-off day all show the energy invested by that group.

Must Campus Chest use high pressure techniques? They have avoided it this year and the lack of contributions seems to indicate that more drastic measure should have been taken. Campus Chest had no desire to "pauperize" the student body and has tried to avoid doing this.

Something must be done by the student body to help this need. This is the last chance. Remember "You're in demand to give a hand to Campus Chest."

TODAY

All Invited to Varsity Ball

We were surprised to hear reports that a majority of the students on campus still possess an erroneous misconception concerning Saturday night's Varsity Ball.

It seems that students are under the impression that the ball is restricted to athletes, inasmuch as it is sponsored by the Varsity Club. To think that would say that the Spintners' Spin is limited to spintners and the Coronation Ball restricted to ROTC officers and cadets.

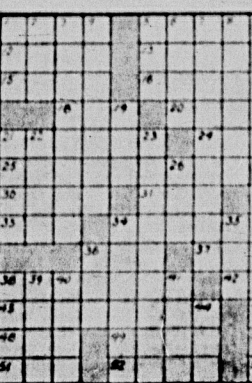
Here is one of the few opportunities to meet the official representing your university in athletics—and a chance to see why Spartan athletes have the nationwide reputation of being the finest sportsmen in the land.

Jack Runyan's 11-piece band will be featured at the all-university dance to be held in the Big 10 and Centennial rooms of Kellogg Center. Other entertainment will include Al Aiken as MC, accordionist Judy Spaulding and the Dudads, singing duet.

The Varsity Club has gone all out in arranging the dance, its success depends on you.

Crossword Puzzle

- ACROSS**
1. Mail
 5. Seed covering
 9. Fruit of a rose bush
 12. Old Amer. Indian
 13. Animal's neck hair
 14. Constellation
 15. N. Y. street
 16. Undertake
 18. Fairy
 20. Agony
 21. Those receiving gifts law
 24. Hire
 25. Enlarged
 27. Inmate
- DOWN**
2. Adepts
 3. Soft metal
 32. Bearing
 33. Played the first card
 34. Distasteful
 36. Artist's frames
 37. Naval officer
 42. Accomplished
 43. Proved a will
 45. Two-wheeled vehicle
 48. Unhappy
 49. Precious church
 50. Name for Athens
 51. Watch closely
 52. Whirlpool
 53. Jump
 54. Stuffed
 55. Bank officers
 56. Rice paste
 57. Rave
 58. Ogled
 59. Possess
 60. Metallic element
 61. Sever
 62. Norwegian county
 63. Cratutry
 64. Telephone disk
 65. Formerly
 66. Soaked
 67. Did wrong
 68. Breed of terrier
 69. Pare
 70. Finishes
 71. Melodious
 72. Procession
 73. Urechin
 74. White lie
 75. Church recess
 76. Cart
 77. Fashion
 78. Go first
 79. Arid
 80. Turmeric
 81. Faucet



ANSWERS TO CROSSWORD PUZZLE

Remember Way Back When?



Commemorate World War II Dead Nov. 17

Czechs Remember Fateful Day

EDITOR'S NOTE: The following article was prepared by the student council of the Czechoslovak Union of Youth as a reminder of the history and importance of International Student Day, Sunday, Nov. 17, 1957. It was mailed directly to the STATE NEWS by Yuzo Tanaka, vice-president of the International Union of Students in Czechoslovakia.

Nov. 17 is an annual event of great significance for Czechoslovak students. When speaking about Nov. 17 in Czechoslovakia, we have in mind not only joyful get-togethers with our colleagues from other countries and the bonds of solidarity and friendship that link us closely to all students the world over. We must also remember the dark days of fascist occupation against which our elders, the students of the Czechoslovak higher schools, waged an heroic and unequal but in the end victorious struggle, side by side with the Czechoslovak people.

What were the causes of the events of Nov. 17, 1939, in Czechoslovakia which gave rise to the tradition of the International Student Day?

On Oct. 28, 1939, the rebellion of the Czechoslovak people to Nazi occupation reached its climax. In Prague thousands of people joined in mass demonstrations, and in clashes with armed Nazi units nine persons were severely wounded, among them two students. One of them, medical student Jan Oljel, succumbed to wounds.

The Czech anti-fascist student organization, Jan Oljel's funeral as an ostentatious manifestation which encouraged the

students of the higher schools to intensify their opposition to the occupation forces. In the face of this situation the Nazis resorted to mass arrests and persecution of students.

Students Shot

On Nov. 17 nine students were shot as a warning example, some 2,000 students and lecturers of the higher schools were kidnapped and sent to concentration camps in Germany. The Czech higher schools were closed down for the duration of the war. But the struggle continued.

This is a brief historical survey of the turbulent autumn days of 1939 and how a tradition came to life which has touched the conscience of all peace-loving people ever since, and which has assumed a truly world-wide significance.

Already during the second World War the students of many countries who were fighting against fascism commemorated the 17th of November. In the year 1945 an international student conference was held in Prague on Nov. 17, where student representatives from more than 30 countries paid tribute to the memory of those who sacrificed their lives for the ideals of democracy and in the struggle against fascism.

INFORMATION

TODAY

GRADUATE GROUP

8 p.m., All Saints Church

CHRISTIAN STUDENT FOUNDATION (folk dance)

8:30 p.m., Peoples Church

HAWAII CLUB

7:30 p.m., International Center

WESLEY FOUNDATION (party)

8:30 p.m., Wesley House

SATURDAY

GAMMA DELTA

11 a.m., Martin Luther Chapel

8 p.m., Forestry Cabin (square dance)

NEWMAN CLUB

9 p.m., St. Johns Student Center (Sophisticated Swing)

WESLEY FOUNDATION

1:30 p.m., Wesley House

5:45 p.m., Wesley House (supper)

7:15 p.m., 31 Union (forum)

8:45 p.m., Wesley House

CHRISTIAN STUDENT FOUNDATION

6 p.m., College House

LUTHERAN STUDENT ASSN.

6 p.m., University Lutheran Church (cost supper)

7 p.m., University Lutheran Church

MARTIN LUTHER CHAPEL

6 p.m., Martin Luther Chapel (cost supper)

7 p.m., Martin Luther Chapel (formal initiation)

8:15 p.m., Martin Luther Chapel

FELLOWSHIP OF RELIGIOUS LIBERALS

6:30 p.m., 35 Union

NAUVOO LEAGUE

7:30 p.m., Union Lounge

NEWMAN CLUB

8:15 p.m., St. Johns Student Center (open house)

of good will, the symbol of a happier future for which honest people the world over fought and died in the second World War.

The celebrations of Nov. 17 are an occasion for the Czechoslovak students to manifest their colleagues in colonial and dependent countries. With a view to their own experiences gained during the years of occupation the Czechoslovak students in the world are fully aware that there can be no lasting peace in the world as long as some of the people do not have the right to decide their own destiny, to elect their government, as long as there are countries in the world where the majority of the population is denied access to education, where they live in poverty and disgrace.

The Czechoslovak students therefore fully support the fight of the students from colonial and dependent countries for the achievement of full national independence, and they are striving to help them to the utmost of their possibilities in their hard plight.

The legacy of Nov. 17 will forever be cherished by the Czechoslovak students as an appeal to carry on an unrelenting struggle against fascism. Even if Hitler fascism was defeated, there still exist forces in the world which make every effort to revive it and menace the new student generation with a disaster similar to that which struck the past one. Drawing a lesson from the tragic past we do not fail to see this danger, we do not underestimate but fully realize it and fight it with all our strength.

Letters to the Editor

Reader Questions Band

To the Editor:

I will take your word for it when you say that the MSU marching band puts on a tremendous half-time performance, as I have no reason to doubt you and as I, for one, am not in a position to say, even though I have been to every home game this season.

Last Saturday I saw the band making some sort of squiggles on the field and heard a blast of music now and then. Why? Because the wind carried away most of the music and the microphone blaring the correct tone took care of the rest. Then too, how can I tell what the band is doing when they are performing for the opposite side of the field and, to me, they are upside-down? People around me applauded with their gloves on, and they yelled when the fight song was played, but I think they were mostly just trying to keep warm.

I know that I and others on the student side of the field can keep up with what's being done by the band if we buy a program, but why should we? I can't see that the function of the band is to provide a wider sale and distribution of programs.

I'm sure that, as you say, the band works hard at their various programs, but its been my experience that the most appreciated performance from a school's band is the spelling out of the school name, or initials, (or the Spartan head) to both sides of the stadium, accompanied by the playing of the school song(s). Perhaps if the band would play the fight song as it comes off the field, a few

more people would sit up and make a little more noise.

As a newcomer to the Big 10, I am curious to know if the other schools we play ever bring their bands to East Lansing for the games here. It would probably heighten the MSU students' appreciation of their own band by the chance to compare it with another and also simply as a matter of pride in the school if something like this could be arranged.

My comments are made not purely for the sake of being critical, but in the hope of being considered as constructive. My feeling is that, though the seeming non-support of the school band is due, in large part, to an apathetic attitude on the part of the student body, this apathy may have its roots in the programs presented by the band and the methods of presentation.

Darlene Naldane

Night Staff

Night Editor: Dale Franz
Asst. Night Editor: John Barton
Night Ad Staff: Linda DeBridge, Nancy Goldsboro
Night Editor: Pat McCarty
Wire Editor: Nancy Rigdon

Letters

'It Stinks!'

To the Editor:

Would it be asking too much of the Administration to look into the stinking situation which exists on the Yellow Cedar River, north of the "Brody group"? We may be proud of the fact that Michigan State started as a "cow college" but does this mean that it has to smell like one?

The stench was so bad Saturday before and after the game, one visitor in the area was heard to remark, "This place smells like the Big 10."

If the administration doesn't care to consider the health and comfort of the 2,500 or so students already living in the Brody group, consider, if you will, the monetary loss represented by the visitors who would have sent their sons here if they hadn't gotten a nose full.

John Morgan

Life Can Be

POTENT POTATO

PARIS, Ky. (AP)—Mrs. Hoy and Hurst has a recipe for salted potatoes.

She baked several potatoes for dinner. At the table, she served one for her husband and another for her son.

Then she speared a third potato. By chance, the peel contained more steam than potato. The steam spouted every way and ditto for the potato.

CAMPUS CLASSIFIEDS

ED 2-1511

Deadline Daily 1 P.M.

Ext. 2615

CLASSIFIED RATES

minimum 15 words

1 day 60c
2 days \$1.00
3 days \$1.30
4 days \$1.50
5 days \$1.65

ADDITIONAL CHARGES
for each word over 15

4c per day
billing charge 15c

AUTOMOTIVE

1954 PLYMOUTH 1954 station wagon

on Standard condition, good

and mechanical condition, very

clean, and 1954

1953 FORD 1953 Ford 1953 Ford

1951 MERCURY 1951 Mercury 1951

1951 MERCURY 1951 Mercury 1951

1951 MERCURY 1951 Mercury 1951

1951 MERCURY 1951 Mercury 1951

1951 MERCURY 1951 Mercury 1951

1951 MERCURY 1951 Mercury 1951

1951 MERCURY 1951 Mercury 1951

1951 MERCURY 1951 Mercury 1951

1951 MERCURY 1951 Mercury 1951

1951 MERCURY 1951 Mercury 1951

1951 MERCURY 1951 Mercury 1951

1951 MERCURY 1951 Mercury 1951

1951 MERCURY 1951 Mercury 1951

1951 MERCURY 1951 Mercury 1951

1951 MERCURY 1951 Mercury 1951

1951 MERCURY 1951 Mercury 1951

1951 MERCURY 1951 Mercury 1951

1951 MERCURY 1951 Mercury 1951

1951 MERCURY 1951 Mercury 1951

1951 MERCURY 1951 Mercury 1951

1951 MERCURY 1951 Mercury 1951

1951 MERCURY 1951 Mercury 1951

1951 MERCURY 1951 Mercury 1951

1951 MERCURY 1951 Mercury 1951

1951 MERCURY 1951 Mercury 1951

1951 MERCURY 1951 Mercury 1951

1951 MERCURY 1951 Mercury 1951

1951 MERCURY 1951 Mercury 1951

1951 MERCURY 1951 Mercury 1951

1951 MERCURY 1951 Mercury 1951

1951 MERCURY 1951 Mercury 1951

1951 MERCURY 1951 Mercury 1951

1951 MERCURY 1951 Mercury 1951

1951 MERCURY 1951 Mercury 1951

1951 MERCURY 1951 Mercury 1951

1951 MERCURY 1951 Mercury 1951

1951 MERCURY 1951 Mercury 1951

1951 MERCURY 1951 Mercury 1951

1951 MERCURY 1951 Mercury 1951

1951 MERCURY 1951 Mercury 1951

1951 MERCURY 1951 Mercury 1951

1951 MERCURY 1951 Mercury 1951

1951 MERCURY 1951 Mercury 1951

1951 MERCURY 1951 Mercury 1951

1951 MERCURY 1951 Mercury 1951

1951 MERCURY 1951 Mercury 1951

1951 MERCURY 1951 Mercury 1951

1951 MERCURY 1951 Mercury 1951

1951 MERCURY 1951 Mercury 1951

1951 MERCURY 1951 Mercury 1951

1951 MERCURY 1951 Mercury 1951

1951 MERCURY 1951 Mercury 1951

1951 MERCURY 1951 Mercury 1951

1951 MERCURY 1951 Mercury 1951

1951 MERCURY 1951 Mercury 1951

1951 MERCURY 1951 Mercury 1951

1951 MERCURY 1951 Mercury 1951

1951 MERCURY 1951 Mercury 1951

1951 MERCURY 1951 Mercury 1951

1951 MERCURY 1951 Mercury 1951

1951 MERCURY 1951 Mercury 1951

1951 MERCURY 1951 Mercury 1951

1951 MERCURY 1951 Mercury 1951

1951 MERCURY 1951 Mercury 1951

1951 MERCURY 1951 Mercury 1951

1951 MERCURY 1951 Mercury 1951

1951 MERCURY 1951 Mercury 1951

1951 MERCURY 1951 Mercury 1951

1951 MERCURY 1951 Mercury 1951

1951 MERCURY 1951 Mercury 1951

1951 MERCURY 1951 Mercury 1951

1951 MERCURY 1951 Mercury 1951

1951 MERCURY 1951 Mercury 1951

1951 MERCURY 1951 Mercury 1951

1951 MERCURY 1951 Mercury 1951

1951 MERCURY 1951 Mercury 1951

1951 MERCURY 1951 Mercury 1951

IS YOUR TYPEWRITER ASLEEP???



Let the typewriter
Waker-upper at CAM-
PUS BOOK STORE
pep up your machine.
... and the typist will
be perked up with a
better machine.
CBS. Across from the Union

Powder Puff Bowl

(Continued from Page 1)
With two weeks of steady work-
outs and drills behind them, the
winners, however, will need more
than just determination.
Gamma Phi coach McDermott
says, "We're going to have plenty
of speed and deception, and
expect a bowl bid if we win—
though I don't say what bowl."
(Last year the Powder Puff was
MSU's only bowl game.)
Captains of the Gamma Phi's,
Sharon Dickens, adds, "Duffy's
talent scouts were looking us
over for the Rose Bowl and
thought perhaps a little powder
on the rose might help them
out."
The PG's, according to their
captain, Nancy Proctor, have

the largest (in number) and
the No. 1 girls team in the Big
10. This is due, she says, to
"our newly initiated recruit pro-
gram, complete with football
scholarships."
Barney Burke, Delta Gamma
mentor, comments that "This is
our third year coaching the
PG's, and though this isn't pro
ball the girls take it seriously,
so we'd like to win." Coach
Kaestner adds, "We have the
hardest hitting groups of beau-
ties in the world."
A special highlight of the
event will be the crowning of
"Miss Powder Puff." The queen
is annually selected from frater-
nity sponsored candidates by
members of the coeds, who tradi-
tionally act as judges.

TICKETS AT UNION
MSE HOTEL ASSOC.
presents

DINE & DANCE
at
RENDEZ-VOUS
PARIS
KELLOGG CENTER NOV. 23

EDRU Roller Skating Arena

3 miles south of Lansing
in Holt on U.S. 27
Open Nights: Wed., Fri., Sat., evening 8 to 11 p.m.
Matinees: Sat. and Sun. 2 to 4:30 p.m.
Private Parties: Mon., Tues., Thurs., Sun. Nights
Reservation still available



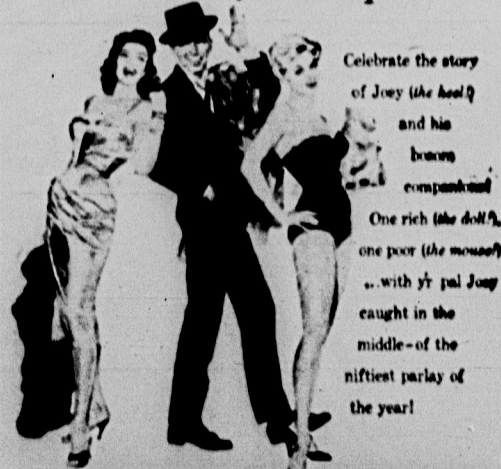
U.S. 27 in Holt "EDRU" Phone OX 9-2438

FALL TERM GRADUATES

Now is the time
to rent your
Cap and Gown
for
Dec. 10
Commencement
Exercises

UNION BOOK STORE

Here comes Joey...and his pals!



Celebrate the story
of Joey (the hood)
and his
brave
companions
One rich (the doll),
one poor (the mouse)
...with y' pal Joey
caught in the
middle-of the
niftiest parlay of
the year!

RITA HAYWORTH
FRANK SINATRA
KIM NOVAK

Meet
"Zip"
"Bewitched"
"What is a Man"
"My Furry Valentine"

Pal Joey

Starts
Thursday

Cagers Look Impressive In Scrimmage Contest

By LARRY WROBLEWSKI
State News Night Editor

Michigan State's cagers gave an excellent display of the
caliber of play symbolic of last year's championship squad
Thursday by downing a frosh-soph outfit, 79-60, in a scrim-
age encounter.

The varsity-upperclassmen
proved to be more aggressive
and experienced than their op-
ponents, even though the losers
were no pushovers.

Anderson designated he would
use John Green at center, Larry
Heiden and Bob Anderregg up
front with Jack Quiggle and
Lave Scott filling the guard
spots as the starting combina-

tion for the present time.
"Keeping your top unit tight-
ly knit and together affords a
solid foundation to work with,"
Anderson keyed.

The five experienced players,
all returning lettermen, picked
for the starting assignments
spearheaded the varsity in its
conquest of the frosh-soph team.

Heiden took game high scor-
ing laurels notching 14 points.
The 6' 5" forward was especial-
ly effective with his jump shot
registering four field goals and
sinking six charity throws.

Starting under the backboards
was Green who collected 13
points. He was credited with
seven rebounds, but his passing
was exceptionally accurate.

The player who ignited the
attack was Quiggle. Though
scoring only seven markers,
Quiggle was prolific in grab-
bing 15 rebounds, high for the
contest.

Anderregg turned in a fine per-
formance by constantly stopping
the frosh-soph offense and con-
tributing with 11 tallies.

Scott, meanwhile, seemed to
hit with the most consistency in
polling six field goals and per-
forming adequately on defense.

At the intermission the varsity
lead accumulated a 44-28
margin and in the second stanza
were never really in danger

Sparring

Gus's Guesses

By LARRY GUSTIN
State News Sports Editor

Record to date: 34-14-3.
IOWA over Ohio State: Both
teams fighting for big prize.
Hawkeyes need win for confer-
ence title. Buckeyes have first of
two chances to wrap up Rose
Bowl trip. They are playing at
Columbus, but still don't think
OSU is that good.

ILLINOIS over Wisconsin:
Illini surprised Michigan last
week, gave Spartans a scare two
weeks before. Badgers always
capable of upset. Illinois will
win in a tight game.

PURDUE over Northwestern:
Both teams suffered Big 10 loss-
es last week, but Boilermakers
solved Ohio State offense in sec-
ond half. Wildcats look weaker
as season wears conclusion.

MICHIGAN over Indiana:
Wolverines might suffer letdown
after dropping out of Rose Bowl
race while looking ahead to
OSU game next week.

OKLAHOMA over Notre
Dame: Let's hope for a close
game. Sooners and Spartans will
be compared by scores against
Notre Dame; their only common
opponent.

TENNESSEE over Mississippi:
Volunteers top candidates for
Sugar or Cotton Bowl, will face
toughest competition in Rebs
since loss to Auburn.

TEXAS A & M over Rice: If
the Aggies are to taste defeat
this season it will be at the
hands of the Owls.

OREGON over Southern Cali-
fornia: Ducks finally lost last
week after squeaking by most of
the season.

Harriers Vie For 3rd Title

Michigan State's undefeated dual meet cross country
squad seeks to add its third straight Big 10 championship
this noon at Washington Park in Chicago.

In recent campaigns Coach
Karl Schladehman's teams have
practically owned an exclusive
copyright on the Western Con-
ference title by winning the
crown five of the last six years.

Though early season forecast-
ers doubted the Spartan su-
premaccy of a year ago, the har-
riers are heavy favorites to suc-
ceed in their title defense.

"The big factor in our effort
to gain first place honors de-
pends on team balance. By early
showings in our dual meets I
believe we have the potential
to cop the Big 10 honors,"
Schladehman retorted.

Complying with the confer-
ence rules on the definite num-
ber of entries, Schladehman has
taken seven runners to the
showdown.

These seven harriers will face
competition afforded by six
league teams which have
thoughts of stopping the pre-
sency of the Spartans.

Representing the Spartans at
the starting line will be the
Kennedy brothers, Forddy and
Henry, Ron Wheeler, Bob Lake,
Dave Lean, Tony Smith and
Ken Dufor.

Already Forddy has establish-
ed a place of prominence in
Spartan annals by gaining first
place in the three scheduled
prets this year and is rated a
top choice to win the four-mile
race.

However, Iowa's Deacon Jones
and Minnesota's Bud Etelen
will be pressing Forddy. Also
brother Henry, two-time winner
of the conference personal title,
may just make it three in a
row. But Henry's bout with the
flu earlier had slowed the great
distance runner and, if he should
win it would certainly make up
for his illness.

Undefeated Coeds Host All-Americans

Undefeated coed field hockey
players will discover the mean-
ing of competition as they host
the Detroit Field Hockey As-
sociation Saturday. Also on Sat-
urday coed swimmers will at-
tempt to top Western Ontario
for a second time.

"A number of All-Americans
and former All-Americans will
pace the Detroit team and will
be an extremely difficult task,
but at the same time it will pro-
vide MSU's hockey team with
good experience," stated Coach
Jean Horwood.

Charlene Eisenlohr, 1956 cap-
tain, will be playing for Detroit
along with Evelyn Smith, an-
other graduate of State.

Last weekend, as members of
Detroit's third team, Charlene
Elaine Orr, Colleen Moore
and Marilyn Poney, compet-
ed in the Great Lakes regional
tournament at Kalamazoo.

After a humiliating defeat
from the Ann Arbor Swim Club
last week, coed swimmers will
be out to swamp Ontario. The
Canadians have several strong
swimmers and Coach Norma
Stafford will be pitting her best
against them.

Among those scheduled to
swim are Renelle Scott and
Joyce Capps, backstroke; Mary
Appelhof, individual medley;
Sue Anderson and Jan Peters,
freestyle; and Ginger Schen-
neman and Mary Woodford, fly-
ing.

STANDARD OIL COMPANY OF CALIFORNIA



California Research Corporation
and other Subsidiaries

Representatives will be on the campus

NOVEMBER 22

to interview

CHEMISTS, CHEMICAL ENGINEERS, ELECTRICAL
ENGINEERS, METALLURGICAL ENGINEERS

FOR CAREER EMPLOYMENT
in California and other areas



IT'S MARIA'S
AFTER THE
PEP RALLY ...
AFTER THE
GAME ...
FOR DELICIOUS
Italian PIZZA!

MARIA'S Restaurant
1810-1812 S. WASHINGTON
LANSING IV 9-3196

IT'S GOING TO GET COLD
TIME FOR ANTI-FREEZE NOW
TO HELP M.S.U. STUDENTS COMBAT
1. Increased Tuition
2. Increased Residence Rates
3. Increased Cost of Living

KRAMER AUTO PARTS

800 E. KALAMAZOO

LANSING

OFFERS

PEAK PERMANENT

AND

NORWAY ANTI-FREEZE

AT

SPECIAL STUDENT PRICES

OPEN: DAILY 8 A.M. TO 6 P.M.

SUNDAYS 10 A.M. TO 1 P.M.

Harryman's

YOUNG MEN'S SHOES

WESBORO

\$8.95

6 1/2 to 12
Size 13
Slightly higher



White or
Black or
Black Call

VALUE ... you can't match at the price
made by the world's largest
shoemaker, famed for quality
fine fit and styling.

Open till 9:00
Mondays
Thursdays
Fridays

HARRYMAN'S

Open till 9:00
Mondays
Fridays

the lightest frame
a man can wear ...

Mr. Tura



The only frame made of lightweight, miracle-metal
Turium. Viciously styled, it will grace your face
in complete comfort ... thanks to its perfectly
balanced, no-slip construction. Handmade in design
... and in masculine colors to go with your ward-
robe. Charcoal, bronze, mint, navy, ebony, silver,
gold. Monogrammed, if you wish. See it—try it on
today.

Eye Examinations By
Dr. W. C. JENSEN Registered Optometrist

WALLACE OPTICIANS

State Theater Bldg., East Lansing Phone ED 2-3117
Also offices in Grosse Pointe, 101 N. Washington, Pt. IV 2-1175

CREST Drive In
THEATRE
Fri. Sat. Sun
FREE Gasoline!
FIRST RUN LANSING SHOWING



MARIA ENGLISH - KATHLEEN HUGHES
SARA SHANE - JOHN BROMFIELD
JESS BARKER - MADGE KENNEDY

Three Bad Sisters Shown Once at 10:10

ROCKIN' RIOTING TEENAGE FURY



Reform School Girl Shown Once at 7:22
Rock Around the World Shown Once at 8:53

NOTE: FREE GAS given to each car enabling our
patrons to run car heaters at no cost—While enjoying
the movies in warm comfort.

Rose Bowl Hopes Flicker - - Bury Golden Gophers!

Back in the early weeks of the football season, the Big Ten-Minnesota game was expected to be the BIG clash of the year. Both teams were ranked high.

Golden Gophers, who were over weak early-season opponents, found themselves in a close one. As Minnesota arrives in Spartan Stadium with a losing streak, Michigan State also found the going rough in mid-year, but the results were less disastrous. The Spartans lost only to Purdue 20-14, in a close one.

In the last two games, the Spartans have begun to show signs of life. They stopped Wisconsin with a tight defense, and Art Johnson's quarterback, overwhelmed by the Green 25-6, last Saturday.

Spartan's game can be a Minnesota prestige.



ART JOHNSON
2 TD's against Irish

State still holds flickering hopes for a Rose Bowl bid. Iowa and Michigan must stop high-flying Ohio State and the Spartans must top the Gophers to remain in contention.

The Spartans will stick with their regular starting lineup for the game, and Don Wright is the only player who will be out with injuries. Don Wright, who suffered a bruised shoulder against Notre Dame, is expected to dress for the game.

Minnesota was overrated this year. Ole Dypwick, Minnesota's advance man, told the Michigan Football Writers Tuesday. "Gopher fans expected them to be great because of the number of returning lettermen," he said.

But sometimes seniors do not play with the enthusiasm younger players do. Two young seniors, a quarterback and a halfback, are expected to be a factor.

Duffy Daugherty, Spartan coach, said his team is not taking the game lightly, especially after the Gophers beat them last year, 14-13.



DON WRIGHT
shakes off injury

Most of us remember Bob Binkley's 27-yard run which beat us last year. He'll be back. So will Rich Borstad, one of the nation's top field goal and extra point kickers," he said.

This will also be the last conference game for a dozen seniors," he said, "and they will want to make good. Even our sophomores will be playing Minnesota for the last time at home.

Six of the seniors are starting. They are Don Gilbert, Don Niska, Walt Kowalewski, Don Currie, Capt. Pat Burke and Dave Kasper.

PROBABLE LINEUPS

MINN.	MINN.
Williams	EE
O'Brien	TE
McIntosh	LT
Currie	RT
Kelly	RB
Burke	QB
Kasper	RB
Sims	QB
Martin	LB
Gilbert	LB
Kowalewski	RB

IM Schedule

FOOTBALL
5:55 Rather 4 vs. Rather 5
6:40 Butterfield 2 vs. Butterfield 3
7:25 ATO vs. DTD
8:10 Raiders vs. Bears
8:55 LUSHWELL AC vs. Old Times
9:40 Signs No vs. PK Ten

TOLLER FIELD
5:55 PRT vs. Turtles
6:40 P Shaw 1 vs. P Shaw 2
7:25 Stages vs. Fire
8:10 Mountmen vs. Rustlers
8:55 Newman vs. Arts II
9:40 Vets 1 vs. Athletics

BENSON FIELD
5:55 P Shaw 1 vs. P Shaw 2
6:40 Bailey 1 vs. Bailey 2
7:25 Butterfield 2 vs. Butterfield 3
8:10 Rockets vs. Operators
8:55 Butterfield 3 vs. Butterfield 4
9:40 Rather 1 vs. Rather 2

BOWLING
Tuesday, Nov. 16
Admission: \$2.00
10:15 Alpha vs. Beta
11:15 Theta Chi vs. Delta Phi

IM Highlights

Full archery competition ended by a close this week-end. Jack Cook, cupping top honors with an aggregate total of 242 points. Second place, 238, was Larry Burdette with 236 points.

NHL Standings

	W	L	T	Pts
Montreal	10	2	2	22
New York	8	5	3	19
Chicago	6	6	3	15
Boston	7	8	0	14
Detroit	4	9	2	10
Toronto	4	9	2	10

Fumbles Prove Costly

White Rips Green In Downpour, 19-0

Coach Gordie Serr's White team again ran over the Green squad of John Polonchek in the second intra-squad freshman tilt, blanking them 19-0.

The entire scrimmage was a downpour on an extremely muddy field, which cut the attendance to about 40 or 50. The game was especially rough on ball-handlers.



An unidentified Green halfback is tackled from behind by three White defenders in Thursday's intra-squad freshman scrimmage.

Alert White defenders pounced on the second Green bobble later in the period and drove from the Green 30 to score. Al Luplow carried over from the

Seek 2nd Straight Unbeaten Year

Booters Face Indiana in '57 Finale

The Spartan soccer team, hoping to extend its undefeated streak to 14 games and two straight years, travels to Indiana Saturday to play its season finale with the rugged Hoosier squad.

Following two ties at the beginning of the season the booters have won five consecutive contests, scoring 14 goals while holding their opponents to three.

Scoring stars Art Southan, with eight goals for the year and Capt. Al Sarria, with five, are both in good physical condition. One of the few times this year when both have felt well, according to Coach Gene Kennedy.

Also ready for action will be Lee Foster, Herb, whose three goals sparked State's win over Kenosha last week, and the

outstanding defense which has helped goalie Al Sasanko rack up three shutouts in the last four outings.

The Hoosiers, with a 4-2-1 record, have spoiled one club's perfect record this year, having knocked off previously unbeaten Eastern, 4-2, two weeks ago.

"They have lots of depth," Kennedy said, "plus a couple of fine players in forwards Dick Hornman and Bob Rottmoller."

"The team should be in for this one," he added, "but I hope the weather is good because there's a better chance of an upset on a wet field."

A.U.S.G. MAILBOX

This is the first in a series of weekly questions from our club members. In reply to a inquiry which our club members have received from the Student Government, the following questions will be answered in future issues of the A.U.S.G. Mailbox.

If you have a question that would like answered, please write to: A.U.S.G. Mailbox, East Lansing, Michigan.

- Q Who pays for our Pep Rallies?—Sara Furr, 325 MAC
- A You the student pay for our Pep Rallies out of the 25¢ student government tax collected every term at registration.
- Q What do the initials A.U.S.G. stand for?—Robert Fredricks, 325 Hillcrest
- A They are an abbreviation for All-University Student Government at Michigan State University.
- Q What kind of a loan set-up does A.U.S.G. have?—Russ Hare, 3735 Lilac
- A A.U.S.G. maintains a short term loan fund in which any full time student may receive ten dollars for a period of two weeks or one month.

13 MORE DAYS if you wish to select PERSONALIZED CHRISTMAS CARDS FROM THE LARGEST SELECTION OF UNUSUAL CARDS ON THE CAMPUS AT CHESTER ROBERTS HALLMARK CARD SHOP 309 E. GRAND RIVER

QUANT COLONIAL

Choose living room, dining room, or bedroom furniture plus lamps and accessories for your home or gifts.

Michigan FURNITURE

VanDervoort's

213 E. Grand River in East Lansing ED 2-2114

UNFINISHED UTILITY TABLE

Can be finished as show for table tennis use! Regulation 5'x9' size.

Durable, smooth 3-ply, 3/4-inch PLYWOOD TOP for fast, accurate play.

Divides into 2 sections, 4 1/2 ft. x 5 ft., has 1 1/2-inch apron.

OFFICIAL Table Tennis size (5 x 9 ft.)

Can of Green Table Tennis Paint included FREE for finishing as table tennis table.

Eight legs, shaped 2" x 2" for maximum rigidity and strength.

\$29.95

REGULATION TABLE TENNIS SET reg. 4.95
4 sand-faced 3-ply bats, complete with net, posts and 2 table tennis balls. **\$3.95**

LAYAWAY SKI EQUIPMENT NOW

Compare And You'll See that the Garments we Clean Look Twice as "New"

Free Parking In Rear

623 E. Grand River

STATE

LAST 2 DAYS! FIRST SHOW 7:00 P.M. SATURDAY FIRST SHOW 1:00 P.M.

NOTE: LATE SHOW TONIGHT BEGINNING AT 10:15 P.M.

Complete Program Information Please Dial ED 2-3817

JOSE FERRER MOULIN ROUGE

Starts SUNDAY 1:00 P.M.

EARTH-SHAKING! SKY-SHATTERING!

HOWARD HUGHES **JET PILOT**

JOHN WAYNE · JANET LEIGH

U.S. AIR FORCE

Sports

Sight Sports Editor — Dave Barrett — Assistant — Mary Watson
November 15, 1957 MICHIGAN STATE NEWS Page Five

COMING SUNDAY NOV. 24 6:30 TO 10 P.M.

THE FOUR FRESHMEN

AMERICA'S TOP VOCAL AND INSTRUMENTAL GROUP
TWO FLOOR SHOWS AT 7 & 9 P.M.

ACCLAIMED AS ONE OF THE GREATEST SING GROUPS OF ALL TIME
THEIR FAME IS NOW WORLD WIDE
ONE UNIQUE FLOOR SHOW BY THE ARABIAN KNIGHTS
AND DANCING FOR ALL TO THE MUSIC OF THE MEL-OSTATERS ORCHESTRA
PHIL HOUGH AS M.C.
Ticket: 15 Advance 1.50 At Door
Tickets Now on Sale at State News Shop

DANCING SAT. NOV. 16 TO THE MUSIC OF CLARENCE SCHMIDT And His 10 P. Orchestra
Vocalist: Dean Anteliff
Admission: 7:00 Open 8 to 1 a.m.
Free Arthur Murray Dance Lessons From 8 to 9 p.m. No Age Limit

THE DELLS BALLROOM

5 MI. N.E. OF EAST LANSING ON LAKE LANSING NORTH SHORE

MILLIONS OF NEW FANS FOR ELVIS PRESLEY -at his greatest!

Something new has been added! There's real fire and power in his portrayal of a kid pushed around by fate... fighting back! An entertainment for everybody, a story that packs a punch, a picture rich in song and romance.

7 SIZZLING NEW SONGS

1. Jailhouse Rock 2. Treat Me Nice 3. Young and Beautiful 4. I Wanna Be Free 5. Don't Leave Me This Way 6. Baby, I Don't Care 7. One More Day

MGM **Jailhouse Rock** MICHIGAN

NOW!

TODAY IS SUPER BARGAIN DAY!
See 2 Hits all day — at Regular Prices!
Jack Lemmon in "OPERATION MAD BALL"
Plus "JAILHOUSE ROCK" Last Show 9 P.M.

LSA Installs Minister

Faith Groups Slate Busy Weekend

The campus religious units have slated a busy weekend for their members. Scheduled functions vary from social activities to business meetings.

The Lutheran Student Association has scheduled the installation of Rev. Donald Herb as pastor responsible for campus ministry. Installation will be held at 4 p.m. Sunday at the University Lutheran Church. A tea will be held following the ceremony.

Rev. Herb and his family came to East Lansing from New York City, where he worked with students from Columbia University for seven years.

The Lutheran Student Association will meet Sunday at 6 p.m. for a cost supper. Following the supper there will be a program, with evening devotionals at 8 p.m. in the Lutheran Chapel.

Westminster House has scheduled a hayride Friday. Transportation will leave 131 Albert St. at 8:30 p.m. There will be a dessert at 6 p.m. Sunday, followed by worship at 6:45.

The Christian Student Association will hold its regular weekly folk dance at 8:30 p.m. Friday in Social Hall of Peoples Church.

Sunday's CSF events will begin with a breakfast forum at 9 a.m. in College House. Coffee and doughnuts will be served, and an informal discussion will be held.

Campus vespers from 6-8 p.m. Sunday will feature a student panel on the nature, purpose and objectives of CSF. A buffet

supper will be held at 6 p.m., followed by a program.

Gamma Delta has chartered the Valparaiso University Choir to sing at three services at the Alumni Memorial Chapel Sunday. The services will start at 8:30 and 11 a.m. The event is open to all students and faculty members.

There will be a square dance held in the honor of the choir at the Forestry Cabin Saturday at 8 p.m.

Newman Club is sponsoring a dance Saturday night from 9-12. The music will be furnished by the "Melodians," an all-girl orchestra from Detroit. The Philomathean Club will meet at 8:15 p.m. Sunday.

Asher House is having a record dance Saturday night at 3. Pan Orthodox Student Association has scheduled a bake sale

Saturday at 12 p.m. It will be held in the St. Andrew's Orthodox Church.

There will be a seminar meeting Saturday at 9:30 a.m. for the men of Bethel Manor.

The Trinity Collegiate Fellowship has planned a Bible study at 6:15 p.m. Sunday at Trinity Church. The subject for discussion will be "The Resurrection of Christ."

The YM-YWCA is sponsoring an "Artists' Ball" at the "Y" House at 8:30 p.m. Saturday. Those attending should dress in costume.

Wesley House will hold a "Sweep and Shine" party Friday night from 8:30-12 following the pop rally. Forum will meet at 7:15 p.m. in 31 Union for a program on "Affirmation Sunday," at which membership in Wesley Foundation will be discussed.



EYE CARE IS IMPORTANT

Safeguard your eyesight with an examination by your eye doctor today.

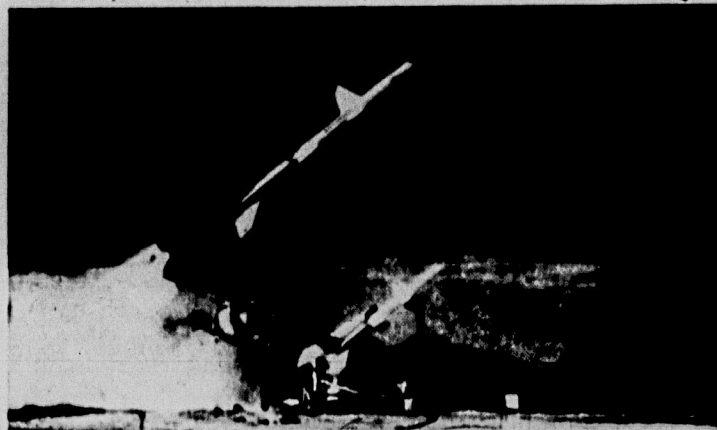
Then see us for a complete selection of all styles.

EAST LANSING OPTICAL CO.

Above Jacobson's

ED 2-3916

E.E.'s, M.E.'s, A.E.'s, Math, Physics and Chemistry Majors:



First uncensored photo of TALOS, long range guided missile developed by APL for the Navy.

Technical achievement is our sole concern

The Applied Physics Laboratory (APL) of The Johns Hopkins University exists solely to make scientific and technical advances. For this reason we are able to offer our staff members freedom to explore tangential ideas, which frequently lead to significant accomplishments. Among our "firsts" are the world's first supersonic ramjet and the first large booster rocket. As far back as 1948 we achieved fully-guided supersonic flight.

Today two guided missiles that grew out of our pioneer work are in production. The TERRIER is now a fleet service weapon, and TALOS (above) has been adapted for land as well as ship-based operation. When TALOS was recently unveiled by the Navy, APL shared honors with many associate and subcontractors who had worked under our technical direction in its development.

We are presently engaged in missile assignments of a highly

advanced nature which cannot be divulged for security reasons. Suffice it to say that, as always, our work is of such vital importance and urgency that little is spared to facilitate its progress. Scientists and engineers at APL are in the vanguard of science and enjoy the keenest sort of responsibility and challenge.

For information on opportunities awaiting men with better-than-average academic records, ask your Placement Officer for our new 30-page publication or write: Professional Staff Appointments.

Interviews on campus WEDNESDAY, NOVEMBER 20

A representative of The Applied Physics Laboratory of The Johns Hopkins University will be on your campus on the days indicated. Please contact your placement officer now and arrange for an interview.

The Johns Hopkins University Applied Physics Laboratory

8621 Georgia Avenue, Silver Spring, Maryland

Attend Church This Sunday



East Lansing — Campus Churches

METHODIST CHURCH OF EAST LANSING

Wilson M. Tennant, Minister

Sunday Services

9:30 a.m. - Worship

Red Cedar School

10:30 a.m. - Church School

Red Cedar School

One Block West of S. Harrison Rd.

On Sever Dr.

11:00 Worship Service

State Theatre

Abbot Rd.

Nursery Available

ALL SAINTS EPISCOPAL CHURCH

University Episcopal Center

200 Abbott Road - ED 2-1113

Rev. Gordon M. Jones - Rector

Rev. John F. Porter - Chaplain

SUNDAY SERVICES

8:00 A.M. Holy Communion

9:30 A.M. Family Service and Church School

11:00 A.M. Morning Prayer or Holy Communion and Sermon

CANTERBURY CLUB

5:30 P.M. Sunday

FIRST CHURCH OF CHRIST SCIENTIST

700 E. Grand River

SUNDAY SCHOOL

9:30 University Students

11:00 All Others

SUNDAY SERVICE

11:00 - 1:00 P.M.

Reading Room

134 W. Grand River

Mon., Tues., Thurs.

9 a.m. - 5 p.m. and 7 p.m. - 9 p.m.

Wed., Friday

9 a.m. - 5 p.m.

Saturday 9 a.m. - 1 p.m.

Sunday 3 p.m. - 5 p.m.

All are welcome to attend Church Services, and visit and use the Reading Room.

PEOPLES CHURCH EAST LANSING

EAST LANSING

Interdenominational

200 West Grand River at Michigan

REV. C. BRANT TEFIT, Pastor

Morning Worship Services

9:30 A.M. 11:00 A.M.

SUBJECT

"THIS IS THE VICTORY"

Rev. Tefit, preaching

Church School

9:30 A.M. 11:00 A.M.

Crib room through high school age

CHRISTIAN STUDENT FOUNDATION

AT PEOPLES CHURCH

140 W. Grand River

Sunday, Oct. 20

9 a.m. Breakfast Forum at College House. Coffee, Donuts and Discussion.

9:30 and 11 a.m. Worship Services at Peoples Church.

6-8 p.m. Campus Vespers beginning with buffet supper in College House. A panel of students will present a program on the nature, purpose and objectives of CSF.

EVERYONE WELCOME

EAST LANSING CHURCH OF CHRIST

Meeting in the American Legion Memorial Center

On Valley Court

(Just off W. Grand River)

SCHEDULE OF SERVICES

SUNDAY Bible Study 10 a.m.

Worship 11 a.m.

Evening Services 6:30 p.m.

WEDNESDAY Bible Study 7:30 p.m.

Sunday Morning 10 a.m.

SPECIAL CLASS FOR COLLEGE STUDENTS

WILLIS C. OWENS, Minister

EAST LANSING TRINITY CHURCH

314 MAC Avenue

A Bible Teaching Ministry

In the Center of East Lansing

E. EUGENE WILLIAMS, Pastor

WORSHIP SERVICES

11:00 a.m.

"FAITH'S KEY WITNESS"

7:30 P.M.

"DOWNPOUR OF GOD'S LOVE"

OTHER SERVICES

9:45 a.m. Sunday School with a class for University students

6:15 p.m. TRINITY COLLEGIATE FELLOWSHIP

All University Students Welcome

7:00 p.m. Prayer and Bible Study each Wed. night

ST. JOHN CHURCH

CATHOLIC STUDENT CENTER

327 M.A.C. Ave.

Sunday Masses 7:30 8:45 10:00 11:30

Daily Mass 6:45 A.M.

Confession Saturday

4:00 to 5:30 P.M. - 7:30 to 9:00 P.M.

Newman Club Event:

Open House Sunday 8:15 P.M.

Student Center

Phone ED 2-5911

EASTMINSTER PRESBYTERIAN CHURCH

Services at East Lansing

Junior High

SUNDAY 10:00 A.M.

Rev. Robert L. Moreland, Pastor

Topic: "REAL THANKS"

The College Age Church School Class will be held at 9:00 A.M. every Sunday in the room by the west entrance.

Mr. and Mrs. Tom Green, Leaders - Mr. and Mrs. Theron Mills, Sponsors

Coffee Will Be Served

Sunday School

for

Cribbery Through Junior High

MARTIN LUTHER CHAPEL

(Missouri) Synod

414 Abbott Road

Chapel ED 2-0778

Parsonage ED 2-0777

SUNDAY SCHEDULE

Morning Worship 9:30 and 11 a.m.

Cost Supper

Gamma Delta Program 6 p.m.

Vespers 8:15 p.m.

DR. GERHARD MUNDINGER

UNIVERSITY LUTHERAN CHURCH

(National Lutheran Council)

Division at Ann Street

Charles Klunk, Pastor

Donald W. Herb, Campus Pastor

Church ED 2-3571

Parsonage ED 2-2733

SUNDAY SCHEDULE

Services: 9:00, 10:15, 11:30 a.m.

University Friends 10:15 a.m.

Installation of Pastor Herb November 11, 4:00 p.m.

LUTHERAN STUDENT ASSN.

Sunday Evening Fellowship

6 p.m. - Supper

7 p.m. NORMAN VINCENT

PEAL, Father John Porter

Episcopalian Chaplain

EDGEWOOD PEOPLES CHURCH

Interdenominational

400 N. Hagadorn Road

(3 blocks north of Grand River)

Rev. Truman A. Morrison, Minister

SERVICES

9:30 a.m. & 11:00 a.m.

Sermon by

Rev. Truman Morrison

Church School at 9:30 and 11 a.m.

for Nursery through 6th Grade

Junior High Class - 9:30

Senior High Class - 11:00

High School Fellowship: 7 to 9 p.m.

NAZARENE CHURCH

300 SOUTH MIFFLIN

RUSSELL E. SPRAY, Pastor

Sunday School 10 a.m.

Morning Service 11 a.m.

Young People and Juniors 6:45 p.m.

followed by the evening worship

service at 7:30 p.m.

OKEMOS BAPTIST CHURCH

NEAR THE CAMPUS

Rev. Howard Johnson, Pastor

Invites You

Morning Service 10 a.m.

Sunday School 11:15 a.m.

Young People 6:30 p.m.

Sunday Night Service 7:30 p.m.

Enjoy

friendliness & good music & a church

Please call ED 2-0785 for a ride

EAST LANSING YOUTH CENTER

423 W. GRAND RIVER

MORNING WORSHIP AT 11 A.M.

Topic: "ETERNAL LIFE"

Sunday School 11 A.M.

DON CIRCLE, Soloist

Wednesday Meeting 8:00 p.m. - Healing Meeting

Affiliated with Unity School, Lee's Summit, Mo.

LANSING CHURCHES

SOUTH BAPTIST CHURCH

South Washington at Moore Street Drive

Pastor Howard Hadden

First Anniversary Services of Worship in Our New Auditorium

10:00 A.M. BIBLE SCHOOL

11:00 A.M. "GOD'S THREE R'S"

1:00 P.M. "DOOM OF NATIONS"

YOU ARE cordially INVITED

Call IV 2-0000 For A Ride

Free Transportation Leaving Bethel Manor 9:30

INTER-CITY BIBLE CHURCH

REV. E. MCCABAN

Independent, Pentecostal, Pop-Ministerial

11:00 A.M. MORNING WORSHIP SERVICE

1:00 P.M. MORNING WORSHIP SERVICE

9:45 a.m. SUNDAY BIBLE SCHOOL

11:00 a.m. GREAT DOCTRINES OF THE BIBLE

No. 6 "Justification By Faith"

6:00 p.m. YOUTH GROUPS

7:00 p.m. EVENING INSPIRATIONAL SERVICE

For Transportation call IV 2-1100

A cordial invitation

First Church of the Nazarene

Corner of Maple, Lansing

FRED J. MAWE, Pastor

Sunday School - 9:45 a.m.

Divine Worship - 11:00 a.m.

Evangelistic - 7:00 p.m.

FIRST PRESBYTERIAN CHURCH

Ontario at Chestnut