



P
E
N
N
Y

N
I
G
H
T

TONIGHT

Proceeds
to Campus Chest

Look to KRAMER'S
For The
Best Buys in

LARGEST
DISCOUNTS
IN TOWN!

New and Rebuilt

★ STARTERS
★ GENERATORS
★ WATER PUMPS
★ FUEL PUMPS
★ CLUTCH PLATES

No Need to Stall, Fret or Cuss . . . See Us!

— Wholesale & Retail —

KRAMER

AUTO PARTS

MEMBER A. M. A.

800 E. KALAMAZOO

PH. IV 4-1335

Your Key to Better Values . . .
Campus Classifieds

FALL TERM
GRADUATES

Commencement
Announcements
Have Arrived
Bring Your Receipt

UNION BOOK STORE

In Annual Green-White Game

Anderson Unveils Cagers Tonight at 8

By LARRY WROBLEWSKI
Asst. Edit Page Editor
Students and Spartan cage
followers will get a preview
peek at this year's Michigan
State basketball team tonight.
The annual Green-White game
is at 8 in Jenison Fieldhouse.

Track Meeting

There will be an important
track meeting for all varsity
and freshman candidates at 7
p.m. Monday in room 209, Jen-
ison Fieldhouse.

The game is also part of the
Basketball Coaches Clinic which
opens today at 10 a.m.
Some 500 coaches, the largest
number to attend the two-day
clinic, are expected to watch
and hear basketball patterns
discussed by guest coach Bill
Rohr of Northwestern.

Aiding Rohr is MSU's coach-
ing staff of Freddy Anderson,
Bob Stevens and Sonny Means.
Co-Captains Bob Anderson
and John Green are expected to
provide most of the scoring at-
tack for the White team.

Green, State's All-American
candidate and high-jumping
center, will give the Whites
height under the backboards,
while Anderson, who averaged
14.5 points per game last sea-
son, has uncanny success with
his jump shot.

Holding down the other for-
ward position is Lance Olson,
the important sixth man last
season. Olson, a rugged player,
will strengthen the White for-
ward line.

At guards will be Dave Fahs
and Jim Stouffer. Fahs, al-

though diminutive in size, is a
smooth floor player and play-
maker. He reminds one of the
quick play of Detroit Pistons'
Dick McGuire. Stouffer has
shown vast improvement this
year and may be the answer to
State's guard problem.

Heading the Green team is
center Horace Walker. Last
year Walker was scholastically
ineligible. He jumps almost as
high as Green.

At the forwards are two soph-
omores, Art Gowens, a quick,
shifty player, and Jim Bechin-

ski, who resembles Jack Quig-
gle.
Tom Rand, who capably re-
placed Dave Scott in mid-sea-
son last year, will head the
guard corps for the Green team.
Harry Turak, who saw limited
action a year ago, will team
with Rand.

Admission is free. The seat-
ing capacity in Jenison is 12,500.

Doctor Rules For Norris

NEW YORK (AP)—Sports pro-
moter James D. Norris is suffer-
ing from "advanced heart dis-
ease" and it might be fatal for
him to testify before a grand
jury investigating corruption in
boxing.

So ruled Supreme Court Jus-
tice Jacob Markowitz, acting as
a medical expert, in quashing a
subpoena calling for Norris' ap-
pearance before the Grand Jury.
He held Thursday that for Nor-
ris to appear would "endanger
his health and life."

Judge Markowitz based his
decision on a report by court ap-
pointed Dr. A. Wilbur Dwyer,
a New York cardiologist.
The examination had been
sought by Assistant District At-
torney Alfred J. Scott, who said
that Norris' testimony might be
of "vital importance to the in-
vestigation."

Phi Epsilon Kappa

Phi Epsilon Kappa, Health
PE, K honorary will meet in
35 Union, Sunday, at 7:30
p.m.

Entries Due For Fencing

Entries for the All-University
fencing meet must be at the
office by next Wednesday. The
meet is open to all students ex-
cept fencing lettermen and
numeral winners of 1954.
Fencing Coach Charles
Schmitter reserves the right to
declare any other men of con-
siderable experience ineligible.
Facilities for practice will be
available upon contact with
Schmitter at Jenison Fieldhouse.
Awards will be given to the
first three men in each event if
sufficient entries are obtained.
The meet will start Monday
Dec. 1, in the foil; Tuesday, De-
c. 2, in the epee; and Wednesday,
Nov. 3, in the sabre.
In the event that it is needed,
the remaining matches in all
weapons will be held on Thurs-
day, Dec. 4.

PLENTY OF
FREE PARKING

ONLY

Serve the Biggest
Beef Burgers in Town
On Sesame Seed Buns

Try Our Fresh Pie . . .
Baked Hourly

1040 E. Grand River Hrs. 7:00 a.m.-1:00 a.m.

Prepare
Now for
Thanksgiving
and
Christmas -

GET READY FOR
THE HOLIDAYS!

Avoid the Rush! See
Us - Remember, We Give
You FAST SERVICE at No
extra charge

Free
Parking
in The
Rear

Louis
shirt laundry • dry cleaning
across from new
student services bldg.

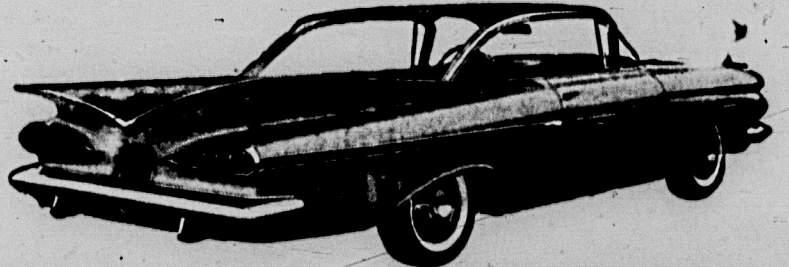
success story
FOR THE MAN
WHO WEARS GLASSES

Men who wear glasses should wear eyewear
that is an asset to their appearance. Nothing
gets the tone of masculinity as the proper pair
of glasses. Illustrated here is Harequin's
GLOBEMASTER, just one from Wallace's won-
derful selection of men's bold frames.

EYE EXAMINATIONS By
DR. W. C. JENSEN, registered optometrist

WALLACE OPTICIANS
State Theater Bldg., East Lansing • Ph. ED 3-2117
also offices downtown at 107 N. Washington, Ph. IV 2-1178

SDP TV-The Dink Store Chevy Show-Sunday-NBC-TV and the Pat Boone Chevy Showroom-weekly on ABC-TV



Like all '59 Chevrolets, this Impala Sport Coupe is now right down to the budget. Try it and you'll see.



Walk around the car that's all-round new . . . then be our guest for a pleasure test-

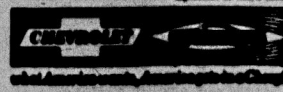
DRIVE A '59 CHEVY TODAY!

One look at this '59 Chevy tells you
here's a car with a whole new slant
on driving. You see the transforma-
tion in its low-set headlights, the
overhead curve of its windshield,
the sheen of its Magic-Mirror finish
— a new acrylic lacquer that does
away with waxing and polishing
for up to three years.

But to discover all that's fresh
and fine you must relax in Chevro-
let's roomier Body by Fisher (up

to 4.2 inches more room in front,
2.3 inches in back), feel the lounge-
like comfort of Chevy's new inter-
ior, experience the hushed tran-
quility of its ride (choice of im-
proved Full Coil or gentler-than-
ever Level Air suspension*). Once
you're on the road you'll discover
such basic benefits as bigger, better
cooled brakes that give over 80%
longer life, new easy-ratio steering
and a Hi-Thrift 6 that gets up to

20 per cent more miles per gallon.
And, of course, you find safety
built into every Chevy. Stop by your dealer's
and pleasure test the car that's
shaped to the new American taste!
*Optional of extra cost.



KOSITCHEKS 92 ANNIVERSARY CELEBRATION

Just one of the many good buys

Blazer!
— GREY
— BLUE
— OLIVE
— BLACK

A \$5.00 Blazer and
your choice of contrasting
shells, a regular 16.50
quality—Both for \$21.50

BLAZER
AND
BLACKS

\$36

H. KOSITCHEK & BRO
DOWNTOWN
LANSING
115 NO. WASHINGTON



see your local authorized Chevrolet dealer for quick appraisal—early delivery!

Jack Quip
capably re-
in mid-sea-
all head the
Green team
saw limited
will team

Rules
rris

Shorts pro-
rris is suffer-
ed heart dis-
e fatal re-
ore a grand
corruption

ne Court Ju-
vitz, acting
in quashing
or Norris
e Grand Jury
that for Nor-
uld "vendage"

Due
acing

All-University
be at the
dnesday. The
l students
ex-terminen
all of 1958
of 1958. Charles
the right
men of con-
vices inelig-
actice will
contact with
on Fieldhouse
given to
each event
are obtained
start Monday
Tuesday De-
Wednesday
re. It is need-
atches in a
eld on Thurs-

WASH and WEAR
ONDON FOG
the male coat you need
weatherman may be
reg, but you're always
in this lightweight
ONDON FOG all-weather
Smartly tailored of
pure cloth, an exclusive
blend of Dacron and
combed cotton... wind-
resistant and wrinkle-resistant.
Washes in machine or tub...
dries overnight. Colors:
\$29.95

Day Nettles
Grand River on the Campus

Martin Traded To Cleveland

Narleski, Mossi Go To Detroit

DETROIT (P)—The Detroit Tigers Thursday gave pitcher Billy Martin and pitcher Al Cicotte for Cleveland's famed relief pitcher, Don Mossi and Ray Narleski, plus infielder Os-
valdo Alvarez.

The first major deal of the season. It gives Frank Severino, who has been with the Cleveland club since 1954, a mound to Detroit, a mound with a reputation as base-
ball's best one-two relief punch.
The Tiger bullpen has been shaky for years and the staff, despite the 20-
win performances of Frank Severino, Jim Bunning and Bill Wirtz in recent seasons, has had a giant headache for months.

Martin, acquired last winter as a 13-player deal with the New York Yankees, hit .255 in 1958, batting in 42 runs in 131 games. He played shortstop most of the time, a position he played only occasionally before he broke into the big leagues in 1950 with the New York Yankees.

Like the Indians' general manager and baseball's most popular manager, made it known in 1958 he was after the 30-year-old scrap-

booker and Mossi reached the major leagues at the same time, joining Cleveland in 1954. Martin won six games and lost six while posting a 1.94 earned run average and Narleski won six decisions and had a 2.21 earned run average.

Alvarez, a 20-year-old infielder, was acquired from the New York Yankees in a 13-player deal.

Alvarez, a 20-year-old infielder, was acquired from the New York Yankees in a 13-player deal.

Alvarez, a 20-year-old infielder, was acquired from the New York Yankees in a 13-player deal.

Alvarez, a 20-year-old infielder, was acquired from the New York Yankees in a 13-player deal.

Alvarez, a 20-year-old infielder, was acquired from the New York Yankees in a 13-player deal.

Alvarez, a 20-year-old infielder, was acquired from the New York Yankees in a 13-player deal.

Alvarez, a 20-year-old infielder, was acquired from the New York Yankees in a 13-player deal.

Alvarez, a 20-year-old infielder, was acquired from the New York Yankees in a 13-player deal.

Alvarez, a 20-year-old infielder, was acquired from the New York Yankees in a 13-player deal.

Alvarez, a 20-year-old infielder, was acquired from the New York Yankees in a 13-player deal.

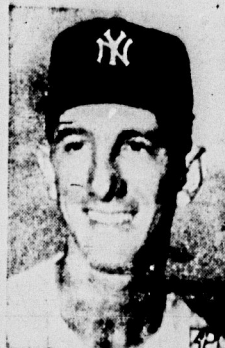
Alvarez, a 20-year-old infielder, was acquired from the New York Yankees in a 13-player deal.

Alvarez, a 20-year-old infielder, was acquired from the New York Yankees in a 13-player deal.

Alvarez, a 20-year-old infielder, was acquired from the New York Yankees in a 13-player deal.

Alvarez, a 20-year-old infielder, was acquired from the New York Yankees in a 13-player deal.

Alvarez, a 20-year-old infielder, was acquired from the New York Yankees in a 13-player deal.



BILLY MARTIN
traded to Tribe

Bowl Bid Set For Falcons

DALLAS (P)—An American Football Academy will play in the Cotton Bowl stadium in Dallas Thursday night.

The Cotton Bowl Athletic Assn. probably will delay its formal offer until after the American Football Academy's season, against Colorado, at Boulder, Colo., Nov. 20, the news agency said.

Since American Football Academy is expected to play in the Cotton Bowl stadium in Dallas Thursday night, the American Football Academy is expected to play in the Cotton Bowl stadium in Dallas Thursday night.

Since American Football Academy is expected to play in the Cotton Bowl stadium in Dallas Thursday night, the American Football Academy is expected to play in the Cotton Bowl stadium in Dallas Thursday night.

Since American Football Academy is expected to play in the Cotton Bowl stadium in Dallas Thursday night, the American Football Academy is expected to play in the Cotton Bowl stadium in Dallas Thursday night.

Since American Football Academy is expected to play in the Cotton Bowl stadium in Dallas Thursday night, the American Football Academy is expected to play in the Cotton Bowl stadium in Dallas Thursday night.

Since American Football Academy is expected to play in the Cotton Bowl stadium in Dallas Thursday night, the American Football Academy is expected to play in the Cotton Bowl stadium in Dallas Thursday night.

Since American Football Academy is expected to play in the Cotton Bowl stadium in Dallas Thursday night, the American Football Academy is expected to play in the Cotton Bowl stadium in Dallas Thursday night.

Since American Football Academy is expected to play in the Cotton Bowl stadium in Dallas Thursday night, the American Football Academy is expected to play in the Cotton Bowl stadium in Dallas Thursday night.

Since American Football Academy is expected to play in the Cotton Bowl stadium in Dallas Thursday night, the American Football Academy is expected to play in the Cotton Bowl stadium in Dallas Thursday night.

Since American Football Academy is expected to play in the Cotton Bowl stadium in Dallas Thursday night, the American Football Academy is expected to play in the Cotton Bowl stadium in Dallas Thursday night.

Since American Football Academy is expected to play in the Cotton Bowl stadium in Dallas Thursday night, the American Football Academy is expected to play in the Cotton Bowl stadium in Dallas Thursday night.

Since American Football Academy is expected to play in the Cotton Bowl stadium in Dallas Thursday night, the American Football Academy is expected to play in the Cotton Bowl stadium in Dallas Thursday night.

Since American Football Academy is expected to play in the Cotton Bowl stadium in Dallas Thursday night, the American Football Academy is expected to play in the Cotton Bowl stadium in Dallas Thursday night.

Since American Football Academy is expected to play in the Cotton Bowl stadium in Dallas Thursday night, the American Football Academy is expected to play in the Cotton Bowl stadium in Dallas Thursday night.

Since American Football Academy is expected to play in the Cotton Bowl stadium in Dallas Thursday night, the American Football Academy is expected to play in the Cotton Bowl stadium in Dallas Thursday night.

Since American Football Academy is expected to play in the Cotton Bowl stadium in Dallas Thursday night, the American Football Academy is expected to play in the Cotton Bowl stadium in Dallas Thursday night.

Since American Football Academy is expected to play in the Cotton Bowl stadium in Dallas Thursday night, the American Football Academy is expected to play in the Cotton Bowl stadium in Dallas Thursday night.

Since American Football Academy is expected to play in the Cotton Bowl stadium in Dallas Thursday night, the American Football Academy is expected to play in the Cotton Bowl stadium in Dallas Thursday night.

Since American Football Academy is expected to play in the Cotton Bowl stadium in Dallas Thursday night, the American Football Academy is expected to play in the Cotton Bowl stadium in Dallas Thursday night.

Mel Ott Near Death In Hospital

NEW ORLEANS (P)—Mel Ott, one-time National League slugger and a member of Baseball's Hall of Fame, lay near death Thursday and a hospital spokesman termed his chances "very slim."

Ott was taken to a hospital here for surgery following an operation at a Gulfport, Miss., hospital last week. Ott and his wife were critically injured in an automobile crash near Bay St. Louis, Miss., Friday. One man was killed in the two-car collision.

The former New York Giants' outfielder and manager suffered fractures of both legs, internal injuries and multiple lacerations in the crash. Gulfport authorities said he had been improving but went back on the critical list Thursday.

Ott is scheduled to undergo surgery within 24 hours. Ott's wife remained at the Gulfport hospital.

The Sigma Kappa sorority defeated North Williams Thursday night 28-26, in an intramural volleyball match, but was topped by East Yakerley, 25-23, in the semi-finals.

The Sigma Kappa sorority defeated North Williams Thursday night 28-26, in an intramural volleyball match, but was topped by East Yakerley, 25-23, in the semi-finals.

The Sigma Kappa sorority defeated North Williams Thursday night 28-26, in an intramural volleyball match, but was topped by East Yakerley, 25-23, in the semi-finals.

The Sigma Kappa sorority defeated North Williams Thursday night 28-26, in an intramural volleyball match, but was topped by East Yakerley, 25-23, in the semi-finals.

The Sigma Kappa sorority defeated North Williams Thursday night 28-26, in an intramural volleyball match, but was topped by East Yakerley, 25-23, in the semi-finals.

The Sigma Kappa sorority defeated North Williams Thursday night 28-26, in an intramural volleyball match, but was topped by East Yakerley, 25-23, in the semi-finals.

The Sigma Kappa sorority defeated North Williams Thursday night 28-26, in an intramural volleyball match, but was topped by East Yakerley, 25-23, in the semi-finals.

The Sigma Kappa sorority defeated North Williams Thursday night 28-26, in an intramural volleyball match, but was topped by East Yakerley, 25-23, in the semi-finals.

The Sigma Kappa sorority defeated North Williams Thursday night 28-26, in an intramural volleyball match, but was topped by East Yakerley, 25-23, in the semi-finals.

The Sigma Kappa sorority defeated North Williams Thursday night 28-26, in an intramural volleyball match, but was topped by East Yakerley, 25-23, in the semi-finals.

The Sigma Kappa sorority defeated North Williams Thursday night 28-26, in an intramural volleyball match, but was topped by East Yakerley, 25-23, in the semi-finals.

The Sigma Kappa sorority defeated North Williams Thursday night 28-26, in an intramural volleyball match, but was topped by East Yakerley, 25-23, in the semi-finals.

The Sigma Kappa sorority defeated North Williams Thursday night 28-26, in an intramural volleyball match, but was topped by East Yakerley, 25-23, in the semi-finals.

The Sigma Kappa sorority defeated North Williams Thursday night 28-26, in an intramural volleyball match, but was topped by East Yakerley, 25-23, in the semi-finals.

The Sigma Kappa sorority defeated North Williams Thursday night 28-26, in an intramural volleyball match, but was topped by East Yakerley, 25-23, in the semi-finals.

The Sigma Kappa sorority defeated North Williams Thursday night 28-26, in an intramural volleyball match, but was topped by East Yakerley, 25-23, in the semi-finals.

The Sigma Kappa sorority defeated North Williams Thursday night 28-26, in an intramural volleyball match, but was topped by East Yakerley, 25-23, in the semi-finals.

The Sigma Kappa sorority defeated North Williams Thursday night 28-26, in an intramural volleyball match, but was topped by East Yakerley, 25-23, in the semi-finals.



Hawks Fire Andy Phillip

ST. LOUIS (P)—Ben Kerney, an owner who demands his teams win and look smart in doing it, Thursday fired Andy Phillip as coach of the St. Louis Hawks, the world champions of professional basketball.

Kerney reached down the Hawks bench and gave Phillip's job to veteran player "Easy Ed" Macauley, a long-time standout on the National Basketball Assn. (NBA).

The Hawks held a 21-12 game lead in the Western Division of the NBA and were 6-4 in the playoff season when Phillip, 36, was fired.

Phillip did not attend the press conference in the Hawks' offices, and Kerney said he hadn't been able to reach Phillip.

The former New York Giants' outfielder and manager suffered fractures of both legs, internal injuries and multiple lacerations in the crash. Gulfport authorities said he had been improving but went back on the critical list Thursday.

Ott is scheduled to undergo surgery within 24 hours. Ott's wife remained at the Gulfport hospital.

The Sigma Kappa sorority defeated North Williams Thursday night 28-26, in an intramural volleyball match, but was topped by East Yakerley, 25-23, in the semi-finals.

The Sigma Kappa sorority defeated North Williams Thursday night 28-26, in an intramural volleyball match, but was topped by East Yakerley, 25-23, in the semi-finals.

The Sigma Kappa sorority defeated North Williams Thursday night 28-26, in an intramural volleyball match, but was topped by East Yakerley, 25-23, in the semi-finals.

The Sigma Kappa sorority defeated North Williams Thursday night 28-26, in an intramural volleyball match, but was topped by East Yakerley, 25-23, in the semi-finals.

The Sigma Kappa sorority defeated North Williams Thursday night 28-26, in an intramural volleyball match, but was topped by East Yakerley, 25-23, in the semi-finals.

The Sigma Kappa sorority defeated North Williams Thursday night 28-26, in an intramural volleyball match, but was topped by East Yakerley, 25-23, in the semi-finals.

The Sigma Kappa sorority defeated North Williams Thursday night 28-26, in an intramural volleyball match, but was topped by East Yakerley, 25-23, in the semi-finals.

The Sigma Kappa sorority defeated North Williams Thursday night 28-26, in an intramural volleyball match, but was topped by East Yakerley, 25-23, in the semi-finals.

The Sigma Kappa sorority defeated North Williams Thursday night 28-26, in an intramural volleyball match, but was topped by East Yakerley, 25-23, in the semi-finals.

The Sigma Kappa sorority defeated North Williams Thursday night 28-26, in an intramural volleyball match, but was topped by East Yakerley, 25-23, in the semi-finals.

The Sigma Kappa sorority defeated North Williams Thursday night 28-26, in an intramural volleyball match, but was topped by East Yakerley, 25-23, in the semi-finals.

The Sigma Kappa sorority defeated North Williams Thursday night 28-26, in an intramural volleyball match, but was topped by East Yakerley, 25-23, in the semi-finals.

The Sigma Kappa sorority defeated North Williams Thursday night 28-26, in an intramural volleyball match, but was topped by East Yakerley, 25-23, in the semi-finals.

The Sigma Kappa sorority defeated North Williams Thursday night 28-26, in an intramural volleyball match, but was topped by East Yakerley, 25-23, in the semi-finals.

The Sigma Kappa sorority defeated North Williams Thursday night 28-26, in an intramural volleyball match, but was topped by East Yakerley, 25-23, in the semi-finals.

The Sigma Kappa sorority defeated North Williams Thursday night 28-26, in an intramural volleyball match, but was topped by East Yakerley, 25-23, in the semi-finals.

The Sigma Kappa sorority defeated North Williams Thursday night 28-26, in an intramural volleyball match, but was topped by East Yakerley, 25-23, in the semi-finals.

The Sigma Kappa sorority defeated North Williams Thursday night 28-26, in an intramural volleyball match, but was topped by East Yakerley, 25-23, in the semi-finals.

Bryan 6 Tops E. S. 10

LCA, Dogs Notch IM Wins Thursday

Lambda Chi Alpha and the Dogs advanced another notch toward the All-University Intramural football finals Thursday. Both teams scored victories, with LCA defeating East Shaw 10, 14-6 and the Dogs beating Emmons 7, 7-6.

Wednesday night, Bryan 6 beat East Shaw 10 to enter the semi-finals, 37-31.

Lambda Chi scored in each the second and third quarters for its triumph. A Bill Beattie pass to Dick Dickerson was good for the extra point.

East Shaw scored on a pass from Marty Kiers to Cy Stewart.

The Dogs' John Davis passed to Gary Verhey for their touchdown, and Hermis Miller's pass to Mike Coppington was good for the game-winning extra point. Emmons scored on a pass from Hank Owens. The Dogs' John Frey stepped in to stop the Emmons extra point.

Bryan 6 advanced in the tournament with a come-from-behind victory over East Shaw Wednesday night. Johnny Schwartz was the top offensive threat for Bryan as it rolled to a 37-31 win. Bryan scored two of its touchdowns within 10 seconds of play.

Beattie's pass to Jim Sullivan scored the winning touchdown.

Beattie's pass to Jim Sullivan scored the winning touchdown.

Beattie's pass to Jim Sullivan scored the winning touchdown.

Beattie's pass to Jim Sullivan scored the winning touchdown.

Beattie's pass to Jim Sullivan scored the winning touchdown.

Beattie's pass to Jim Sullivan scored the winning touchdown.

Beattie's pass to Jim Sullivan scored the winning touchdown.

Beattie's pass to Jim Sullivan scored the winning touchdown.

Beattie's pass to Jim Sullivan scored the winning touchdown.

Beattie's pass to Jim Sullivan scored the winning touchdown.

Beattie's pass to Jim Sullivan scored the winning touchdown.

Beattie's pass to Jim Sullivan scored the winning touchdown.

Beattie's pass to Jim Sullivan scored the winning touchdown.

Beattie's pass to Jim Sullivan scored the winning touchdown.

Beattie's pass to Jim Sullivan scored the winning touchdown.

Beattie's pass to Jim Sullivan scored the winning touchdown.

Beattie's pass to Jim Sullivan scored the winning touchdown.

Beattie's pass to Jim Sullivan scored the winning touchdown.

Beattie's pass to Jim Sullivan scored the winning touchdown.

Beattie's pass to Jim Sullivan scored the winning touchdown.

Beattie's pass to Jim Sullivan scored the winning touchdown.

Your Key to Better Values...
Campus Classifieds

SENIORS WANTED 600 SENIOR PROOFS MISSING FOR 3 WEEKS

DUE BY
WEDNESDAY - NOV. 24

AT
4th FLOOR UNION BLDG.

IN DOWNTOWN LANSING, IT'S...

the EAGLE CAFE
for Broiled Live Lobsters
and Tender Broiled Steaks

We honor
American Express
Credit Cards

superb food!

The Trend Is To Alpen Loden Cloth Coats

Regular Length
Top Quality
Top Coats
In Blue
\$45.00



95%
Wool
"Ivy League
Lining"

Car Coats
¾ Length
In The Latest
Charcoal Green
Bankers Grey
& Oxford
\$29.50
ALL COATS
IMPORTED
FROM
WEST GERMANY

OTHER CAR COATS FROM \$17.95

Ramsey's
University Shop
GRAND RIVER at M.A.C.

BOOK SALE

THOUSANDS
OF REFERENCE
BOOKS
9c
AND UP

2000
POCKET BOOKS
2 FOR 25c
OR
\$1.00
PER DOZEN

BOOKS ADDED DAILY

at
GIBSON'S
UNIVERSITY BOOKSTORE
(In the People's Church Block)

Social Season Swings Around Dancing Trail

The football season comes to an end this weekend and with the excitement of Thanksgiving vacation in the air, parties and dances have been planned for everyone's enjoyment.

Tonight is "Penny Night," sponsored by Campus Chest. Betty Coed will be granted an extra hour of grace if her fellow contestants to purchasing a ticket worth sixty special per minutes.

"Beat Generation" is the theme of the Alpha Omicron Pi informal term party this evening from 9-1 AOP's and dates will

Religious Units Set Program

By CONNIE ZEKIT
The campus religious organizations have stated a varied program of activities for the weekend.

Christian Student Foundation has scheduled Glenn Smiley, secretary for the Fellowship of Reconciliation, to be the guest leader at their round table at 9 a.m. Sunday.

Hillel Foundation will conduct Sabbath services at 7:30 tonight at Hillel House. A Chanukah party will be held at 6 p.m. Sunday.

Canterbury Club has planned a cost supper for 5:30 p.m. Sunday. Following the dinner, the Rev. John Porter and Dr. Mahlon Sharp will discuss "Some Problems Marriage Raises."

Lutheran Student Association meets Sunday evening and will hear Pastor Robert Spier discuss "The New Testament Speaks to Our Day."

Wesley Forum meets in 31 Union at 7 Sunday evening for a "Mike Wallace" interview on "The Truth About Thanksgiving." Dr. Robert Anderson, assistant professor of religion, will conduct the Sunday school class on the "Significance of Ritual and Sacraments in the Methodist Church."

attend in costumes befitting the motto "Go Bo!"

Pi Beta Phi and dates will gather for a hay ride tonight prior to a dance at the Pi Phi house.

Parties and dances will also be held by Delta Sigma Phi, Delta Upsilon, Delta Tau Delta, Farmhouse, Alpha Tau Omega, Theta Chi, Alpha Chi Sigma, Bryan Hall, and Rather and Phillips Halls.

Saturday afternoon from 4:30-6 there will be an open house for all Greek living units at the Kappa Delta house. The Paul Hollinger jazz combo will be featured.

Patched-up clothing will be the vogue Saturday evening at the Alpha Kappa Psi "Hobo Shuffle" costume party and dance.

All witches and goblins left over from Halloween will be gathering at Hillel House Saturday night for the Sigma Alpha Mu "Ghost's Night Out" costume party.

Alpha Kappa Alpha has set a Can-Can party from 8:30-12 p.m. Saturday at the Masonic Temple Hall.

Loaded dice and marked cards will be strictly legal at the Phi Kappa Sigma "Gambling Party" Saturday evening from 9-12.

Alpha Phi's and dates will take over the ice rink Saturday evening as they gather for a skating party, which will be followed by dancing and refreshments at the chapter house.

Term parties will be sponsored Saturday by East and West Shaw, Gilchrist Hall and Elsworth House.

A visit to old Italy will be made by the men of Hendrick Co-op Saturday as they and their dates hold a pizza party.

Triangle and dates will be hayriding to Woodward Farm Saturday evening.

gift supreme for Dad...



Never demanding attention but invariably attracting a lot because of its sleek wafer-thin beauty... the Omega Automatic built-in "power magic" remembers to wind the movement as you wear it. Modern as today's newspaper... equally up-to-the-minute in accuracy.

Self-winding Omegas are priced from \$75.00. Model illustrated, \$97.50. Other Omega watches for men and women from \$71.50. Fed. tax included.

RANNEY Jewelers

Certified Gemologist
REGISTERED JEWELER
AMERICAN GEM SOCIETY

Next to State Theater

CAMPUS CLASSIFIEDS... LOW COST...

Light weight Warmth with the

big knit fashion



The news about this jacket is it's handsome, bulky knitted collar and wristlets... it's warm fluffy Nylon fleece lining and Dacron & Cotton outer shell — completely washable. That's news enough to make them sell about as fast as we can get them. Comfortably cut and sturdily tailored by McGregor, they're great for all kinds of active outdoor wear.

The best \$25.95 you've ever spent

SMALL'S

211 South Washington Ave.

Open Friday and Monday 'till 9 P.M.

Attend Church This Sunday

EAST LANSING

CHURCHES

MARTIN LUTHER CHAPEL

(Missouri Synod)
444 Abbott Road
Chapel ED 3-0778

SUNDAY SCHEDULE

Morning Worship 10:00 and 11:15

9:15 Bible Study

Cost Supper

Gamma Delta Program 6 p.m.

Vespers 8:15 p.m.

Interim Pastor, Rev. Donald Ortner

2004 Dean Ave.

Holt, Michigan

Parsonage No. OX 3-2300

UNIVERSITY LUTHERAN CHURCH AND STUDENT-CENTER

Division at Ann Street
(Two blocks North of Berkey Hall)
Church ED 2-5971

Parsonage ED 2-5728

WORSHIP

Sunday: 9:00, 10:15, 11:30 a.m.

Wednesday Communion: 7 a.m.

STUDY

Study Class: Sunday 10:15 a.m.

Worshipers "Laws of Polity"

SUPPER FELLOWSHIP

Sunday 5:30 p.m.

The New Testament Section

Our Day — Dr. Robert Spier

GRADUATES & FACULTY

Lancheon, Thursday 12:15 p.m.

PEOPLES CHURCH EAST LANSING

Interdenominational
200 West Grand River at Michigan

REV. C. BRANDT TEFFT, Pastor

MORNING WORSHIP

Sermon by Rev. C. Brandt Tefft

The Sacrifices of Thanksgiving

Church School

9:30 a.m. 11:00 a.m.

Crib room through high school age

CHRISTIAN STUDENT FOUNDATION

140 W. Grand River

9:00 Student Round Table

Glenn E. Smiley—Guest Leader

"Brotherhood at the Crossroads"

11:00 a.m. Worship at Peoples Church

MUSF delegates as special guests

7:00 Campus Vesper Services

Rev. E. Floyd Norton

Topic: "Spirit of Thanksgiving"

Everyone Welcome

"Straight Thinking in a Crooked World"

FIRST CHURCH OF CHRIST SCIENTIST

Branch of The Mother Church

The First Church of Christ

Scientist, Boston, Mass.

700 S. Grand River

Church Services 11 a.m.

Sunday School 11 a.m.

Subject

"SOUL AND BODY"

Reading Room

Mon., Tues., Thurs.

9 a.m. - 5 p.m. and 7 p.m. - 9 p.m.

Wed., Friday

9 a.m. - 5 p.m.

Saturday 9 a.m. - 1 p.m.

All are welcome to attend Church

Services, and visit and use the

Reading Room.

ST. JOHN CHURCH & CATHOLIC STUDENT CENTER

Fr. R. Ravenough P.O. P. Sipple

207 M.A.C. Avenue

Sunday Masses

7:30 - 8:00 - 10:00 - 11:30

(Baby sitting at 8:00 & 10:00 Masses)

Daily Masses 6:00 & 8:00 a.m.

Confessions Daily 8:00 a.m. & 5:30 p.m. (after Rosary)

Saturday 4:45 & 7:00-9:00 p.m.

CATHOLIC STUDENT ORGANIZATION MEETS SUNDAY

7:00 p.m.

Phone ED 3-0778

METHODIST CHURCH OF EAST LANSING

and

WESLEY FOUNDATION

Wilton M. Tennant,

George L. Jordan

2 Ministers

Sunday Worship

9:30 a.m. Red Cedar School

One Block West of S. Harrison St.

On Boyer Dr.

11:00 a.m. State Theatre

Nursery for both services

Church School

9:30 a.m. Church Class Weds

10:30 a.m. AM Ages

Red Cedar School

EDGEWOOD PEOPLES CHURCH

Interdenominational

600 N. Hagadorn Road

(5 blocks north of Grand River)

Rev. Truman A. Morrison, Minister

Rev. Robinson G. Lapp, Minister

9:30 a.m. & 11:00 a.m.

Sermon by

Rev. Robinson G. Lapp

Church School at 9:30 and 11 a.m.

Crib room through Junior High

Senior High Class — 11:00

High School Fellowship — 7 to 9 p.m.

EASTMINSTER PRESBYTERIAN CHURCH

Rev. Robert L. Moreland, Minister

540 Division Street

SUNDAY PROGRAM

E.L. Jr. High School, 815 Abbott Rd.

9:30 a.m. Expanded Church School

and adult study. Students are

welcome in any one of four classes

10:30 a.m. Morning Worship

and expanded Church School for

children third grade and under.

Guest Minister

Rev. Jack Harrison

Presbyterian University Pastor

Sermon

"The Things We Have Heard"

STUDENTS WELCOME

EAST LANSING TRINITY CHURCH

120 Spartan Avenue

A Bible Teaching Ministry

in the Center of East Lansing

Rev. E. EUGENE WILLIAMS,

Pastor

WORSHIP SERVICES

11:00 a.m.

"In Everything Give Thanks"

7:30 p.m.

OTHER SERVICES

9:45 a.m. Sunday School with

class for University students

6:30 p.m. TRINITY COLLEGIATE

FELLOWSHIP

All University Students Welcome

7:00 p.m. Wed. Rev. G. W. J. Green

Lecture of St. John, Oxford

England, Good Spraker

ALL SAINTS EPISCOPAL CHURCH

800 Abbott Road — ED 3-1313

Rev. John P. Porter — Chaplain

SUNDAY SERVICES

8:00 a.m. Holy Communion

9:15 a.m. Family Service and

Church School

11:00 a.m. Morning Prayer or Holy

Communion and Sermon

CANTERBURY CLUB

6:00 p.m. Sunday

SUNDAY BUS SCHEDULE

Departures from Campus

10:00 a.m. Gilchrist and Parking

Lot

10:45 a.m. Butterfield

10:00 a.m. Shaw Hall Parking

Lot

10:45 a.m. Mason Hall Parking

Lot

Return to Same Points After

Church

OLIVET BAPTIST CHURCH

2015 S. Michigan

Rev. William Hartman, Pastor

SUNDAY

Sunday School 9:00 a.m.

Morning Worship 9:45 a.m.

11:00 a.m.

Youth Groups 1:30 p.m.

Evening Service 7:00 p.m.

Supper 7:30 p.m.

Transportation leaving 8:00 p.m.

General Street 9:00 a.m. Sunday or

call IV 3-0125 for a ride.

(Closest Baptist Church to Campus)

Phone ED 3-0778

Phone ED 3-0778

Phone ED 3-0778

Phone ED 3-0778

Phone ED 3-0778

Phone ED 3-0778

Phone ED 3-0778

Phone ED 3-0778

Phone ED 3-0778

SOUTH BAPTIST CHURCH

South Washington at Moore River Drive

Howard F. Pagoda D.D. Desmond J. Bell

10:00 a.m. Bible School Hour, College Class Taught

by Dr. David Warriner, Natural Science

Dep't. MSU

11:00 a.m. "GOD'S WILL AND YOUR THANKS"

7:00 p.m. "WILL YOU SURVIVE THE GRAVE?"

9:30 p.m. Adult Youth Fellowship

DISCUSSION: "THE BELIEVERS THREEFOLD OBLIGATION"

Over bus service leaving Shaw and Farm Lane 9:30 a.m. and 4:30 p.m.

Bound through campus. For further information call IV 3-0125

FIRST CHRISTIAN CHURCH

(Disciples of Christ)

Bolton and Eureka Streets

1 blk South of Sparrow Hospital

Church School 9:45 a.m. Morning Worship 10:45 a.m.

Old Bus 9:00 p.m. C.T.F. 9:00 p.m.

(Age 12-30) (Dr. M. & College age)

Call ED 3-0125

INTER-CITY BIBLE CHURCH

REV. E. MCNEILAN

Independent, Fundamental, Pre-Millennial

REV. G. A. TUNSTRA, PASTOR

9:45 a.m. Sunday Bible School

10:00 a.m. Morning Worship

10:45 p.m. Youth Groups

</