

Chosen NCAA Cage Site

Campus Housing Shortage Expected

A critical shortage of rooms faces the university this fall despite the opening of a new coed dormitory, reports from the housing office show today.

Eleven thousand students have been assigned space in housing originally designed for 9,500 residents, including 1,400 in the new Wilson Hall, MSU's second coed dormitory, said Tom Dutch, director of university housing.

The housing office is holding up applications of sophomore, junior and senior men who want to live in one of the school's eight men's halls until all male freshmen are assured a room.

Freshmen must be assigned rooms first because of university regulations stating they must live in on-campus housing their first year of school, Dutch said.

Some Upperclassmen who wanted to live on campus might have to find off campus housing, it appears.

So far 5,000 men have been placed in housing designed for 4,000, necessitating three men in a room in many cases.

"This is the first time since I've been here we might have to turn down applications from upper-classmen," said Dutch, who is in his 10th year as housing director. "It is the most crowded the housing has been as far as men are concerned that I've seen."

Women's housing is not as critical, Dutch said. Up to last week, 5,818 coeds were given

rooms designed for 5,500 in 14 dormitories.

Pressure on women's housing was eased somewhat this year when Rather and Butterfield dormitories in Brody were converted for women. Previously women were more crowded than

(Continued on page 5)

Canoe Trip To Mio Ends; Paddlers Rest

Picture on Page 4

A tired, but happy MSU couple paddled into Mio Sportsman's Park around noon Thursday after making a 23 day 600 mile trip from the East Lansing campus for the opening of the Great Lakes Forestry Exposition.

Bob and Carol Manthey put their canoe in the Red Cedar below the dam on south campus July 3, paddled to Kalamazoo street and portaged around Lansing.

They continued on down the Grand River and then portaged around the dams at Grand Rapids and paddled to Lake Michigan.

In Lake Michigan, Manthey and his East Lansing school teacher wife met high waves and unseasonable weather.

After canoeing up the coast 100 miles to the mouth of the Manistee, the couple attached a three-horse power motor to

(Continued on page 4)



ELEPHANT TUSKS--Deanna Begovich, Pontiac junior, holds one of two 65-pound ivory tusks the MSU Museum received this week from Jens Touberg, wildlife hunter and photographer. Touberg also sent along 4,000 pounds of bones and hide which belong to the bull African elephant he shot in Kenya this year. --State News Photo

Museum Is Given Elephant Bones

Michigan State University Museum officials are puzzled. They have received by donation the

bones, tusk and hide of an African elephant shot in Kenya, Africa, early this year, and haven't decided what to do with it yet.

The six-ton African specimen was shot by and donated to the university by Jens Touberg, Tecumseh, Mich., wildlife hunter and photographer.

Officials have not decided what to do with the animal which arrived last week in five large packing boxes weighing 4,000 pounds.

"We can use it several ways," said Rollin Baker, director of the Museum. "The bones can be used to compare with fossils or bones of the elephant's cousin which roamed Michigan at one time--the mastodons. The elephant has value for both teaching and research."

Baker is considering reconstructing the elephant using the bones, the hide "which weighed several hundred pounds," and the 65-pound aplece tusks, but finding enough room is a problem.

Touberg's donation gives the MSU museum a bragging point. Baker said his museum now has the only complete African elephant in a Michigan museum.

Touberg, described as a friend of the Museum, has also donated the South American Jaguar, and two India tigers.

Regionals Are Here In March

Michigan State has been chosen as one of the four schools to play host to the 1963 NCAA regional basketball playoffs, the association has announced.

Kansas, Maryland and Brigham Young will be the other sites.

MSU will have the mid-eastern playoffs in Jenison Fieldhouse on March 15 and 16, Clarence "Biggie" Munn, University athletic director said Sunday.

Commenting on the NCAA decision, Biggie said:

"I checked with the head of the state high school athletic commission to see that the dates wouldn't conflict with the high school playoffs; called Forddy Anderson, and that was it."

"People who are basketball fans will get to see a lot of teams play. The Big 10 championship team will make a showing and the winner of the regionals will go to the playoffs in Louisville."

"The high school tournament will take place the following week, March 22 and 23," Biggie said.

"This is the first time in the NCAA tourney history that MSU has been chosen to host the regionals," he added.

Bruce Fossum, MSU assistant basketball coach, said: "Forddy and I were in Chicago on Thursday and not sure even then that the regionals would be held here. It is quite an honor."

"But it will be a big job for everyone concerned," he added.

Fossum said that the sale of tickets will be in the hands of local people.

He further commented that "since four of the top teams in the country will play here, it is very possible people in this area will get to see the national champion."

Coed Dining Set For Fall

Coed dining comes to the Brody group this fall, Brody officials announced last week.

Women move into Rather and Butterfield Halls at the Brody area for the first time since the buildings were completed.

According to Ted Smith, Brody manager, Butterfield women will eat in the southeast dining room along with Armstrong and Bailey men. Emmons formerly used that dining room. Emmons residents will eat in the Northeast dining room with Rather women and Bryan men.

Smith said there would be revised food choice policies, modified from both women and men menus used in other dorms.



PROUD OF EMBLEMS--This foreign car and Laurie Nosanchuk, Pontiac sophomore, are proud members of the MSU family. Ralph Matt-

hews, owner of the automobile, obtained the unusual license plate in Vermont.

--State News Photo

In Track Meet Ex-MSU Runner Beats Russians

There was a definite Michigan State tone to the United States' 128-107 victory over the Russian track team Sunday in Stanford, Calif.

Willie Atterberry, who last ran for MSU's Coach Fran Dittich in 1960, set a meet record in winning the 400-meter hurdles in 50.3 seconds. Atterberry, who now lives in Los Angeles, caught up with Rex Cawley of Farmington, Mich., and passed him at the last hurdle.

MSU observers say Atterberry is running much better than he ever did at Michigan State and is nearing his prime, although

he is 28 years old, an elderly age among American trackmen. After the meet the former Spartan, a 1962 NAAU champion, looked toward the 1963 Pan-American games.

"I may be too old for the Tokyo Olympics—I'll be 31," he said. "But I'll keep in training for the Pan-American Games for next year."

Atterberry missed the 1960 Olympics and failed to win a title in the 1960 Big Ten track meet after his coach predicted a possible berth on the U.S. team.

What is the Detroit Eastern runner doing different today than what he did during his Michigan State career?

"He's finally training the way he's supposed to," Dittich said. "He now runs cross country. I advised him to do that while he was here but he didn't want to."

"The long distance helps build endurance. Twenty-nine isn't too old for track men. Willie has natural endurance which he didn't start developing until college and hasn't perfected it until now."

The west coast is not strange to Atterberry. Before enrolling at State, he did a lot of running on the coast. He ran a 51.2 in the 400 meter hurdle finals in the 1956 Olympic trials at Los Angeles.

When a MSU freshman, he set a world record of 1:08.5 for the 600-yard run outdoors at the 1957 Ohio Relays.



WILLIE ATTERBERRY

Zerby Leaves For 2 Years In Nigeria

Lewis K. Zerby, MSU professor of philosophy, left July 15 for a two year assignment as an adviser in the social sciences at the new University of Nigeria at Nsukka.

Michigan State, under a contract with the Agency for International Development, is providing technical assistance in a number of areas at the new university in Africa.

Zerby will be responsible for the general studies program in the social sciences at the Uni-

versity of Nigeria. His assignment there ends June 30, 1964. Zerby joined the MSU faculty in 1946. Prior to that he helped to develop a core course on the history of ideas while at the State University of Iowa and he also worked with the development of a general division course in literature and fine arts while a technical assistant at the University of Illinois.

SATELLITE HAMBURGERS

15¢

Try Our Added Selections			
Deluxe	30¢	Fish	30¢
Chicken	40¢	Onion Rings	15¢
Oliveburger	25¢	Double Cheese	35¢

Two Blocks West of Sears on Mich. (End of Blvd)

University Theatre

SUMMER CIRCLE

"OUR TOWN"

Thru SATURDAY

AT THE ARENA THEATRE
IN DEMONSTRATION HALL

July 25-28

ADMISSION
Wednesday & Thursday \$1.50
Friday & Saturday \$1.75

Box Office Hours
2-6 P.M., Monday-Saturday
Phone 355-0148

CURTAIN - 8:30

STARLITE

Two Miles Southwest of Lansing on M-73

STARTS FRIDAY 7 BIG DAYS.

EXCLUSIVE FIRST SHOWING

Here comes trouble

Shown Once-10:29

Jessica

a most mischievous girl

She's the most luscious forbidden fruit that ever dropped into the screen's lap!

Co-FEATURE (Second Run) Once At 8:40

MURRAY
HEPBURN

SHIRLEY
McLAINE

JAMES
GARNER

THE CHILDREN'S HOUR

Presented by UNITED ARTISTS

MIRIAM HOPKINS • FAY Bainter • KAREN BALKIN

FRI-SAT-LATE-Show AT 12:30

Gates
Open
7:30

William HOLDEN
Kath ROYAL
Rosalind RUSSELL

picnic

CINEMA SCOPE

Admission
90¢

THE GREATEST HUMAN DRAMA EVER FILMED!

TWO YEARS IN THE MAKING MILLIONS TO PRODUCE!

KATE SIMON LEGREF

BITA UNCLE TOM

LOVE LITTLE EVA

LAUGH AT TOSY

UNCLE TOM'S CABIN

WITH A CAST OF THOUSANDS

THE RAYMOND MASSEY

MSU FOREIGN FILM SERIES

Fri., Sat. - July 27, 28 - 7:30 p.m. Fairchild Theatre Admission: 50¢

STARTS
TOMORROW!

First Show 2:00 P.M.

"THE PRIGGISH HAD BEST STAY AWAY."

—The Saturday Review, New York

"AS MUCH FUN AS A BARRELFUL OF MONKEYS."

TRIUMPHANT VINDICATION OF THE ARTIST AS IMPROVISE . . . FANTASTICALLY BEAUTIFUL.

STATE THEATRE

332-2814 332-5817

TODAY ONLY!
at 7:05, 9:25 P.M.

Jeanette
MacDonald
Nelson EDDY

—11—
The Girl of The
Golden West

"A HAPPY, SENSUOUS, GOOFY MOVIE BY JEAN RENOIR."

—Vogue Magazine

Picnic on the Grass

Written, Directed and Produced by JEAN RENOIR
with Paul Meurisse and introducing Catherine Brezval in Eastmancolor

FEATURE STARTS
FRI. 7:35,
9:45 P.M.



Chosen NCAA Cage Site

Campus Housing Shortage Expected

A critical shortage of rooms faces the university this fall despite the opening of a new coed dormitory, reports from the housing office show today.

Eleven thousand students have been assigned space in housing originally designed for 9,500 residents, including 1,400 in the new Wilson Hall, MSU's second coed dormitory, said Tom Dutch, director of university housing.

The housing office is holding up applications of sophomore, junior and senior men who want to live in one of the school's eight men's halls until all male freshmen are assured a room.

Freshmen must be assigned rooms first because of university regulations stating they must live in on-campus housing their first year of school, Dutch said.

Some Upperclassmen who wanted to live on campus might have to find off campus housing, it appears.

So far 5,000 men have been placed in housing designed for 4,000, necessitating three men in a room in many cases.

"This is the first time since I've been here we might have to turn down applications from upper-classmen," said Dutch, who is in his 10th year as housing director. "It is the most crowded the housing has been as far as men are concerned that I've seen."

Women's housing is not as critical, Dutch said. Up to last week, 5,818 coeds were given

rooms designed for 5,500 in 14 dormitories.

Pressure on women's housing was eased somewhat this year when Rather and Butterfield dormitories in Brody were converted for women. Previously women were more crowded than

(Continued on page 5)

Canoe Trip To Mio Ends; Paddlers Rest

Picture on Page 4

A tired, but happy MSU couple paddled into Mio Sportsman's Park around noon Thursday after making a 23 day 600 mile trip from the East Lansing campus for the opening of the Great Lakes Forestry Exposition.

Bob and Carol Manthey put their canoe in the Red Cedar below the dam on south campus July 3, paddled to Kalamazoo street and portaged around Lansing.

They continued on down the Grand River and then portaged around the dams at Grand Rapids and paddled to Lake Michigan.

In Lake Michigan, Manthey and his East Lansing school teacher wife met high waves and unseasonable weather.

After canoeing up the coast 100 miles to the mouth of the Manistee, the couple attached a three-horse power motor to

(Continued on page 4)



ELEPHANT TUSKS--Deanna Begovich, Pontiac junior, holds one of two 65 pound ivory tusks the MSU Museum received this week from Jens Touberg, wildlife hunter and photographer. Touberg also sent along 4,000 pounds of bones and hide which belong to the bull African elephant he shot in Kenya this year.

--State News Photo

Museum Is Given Elephant Bones

Michigan State University Museum officials are puzzled. They have received by donation the

bones, tusk and hide of an African elephant shot in Kenya, Africa, early this year, and haven't decided what to do with it yet.

The six-ton African specimen was shot by and donated to the university by Jens Touberg, Tecumseh, Mich., wildlife hunter and photographer.

Officials have not decided what to do with the animal which arrived last week in five large packing boxes weighing 4,000 pounds.

"We can use it several ways," said Rollin Baker, director of the Museum. "The bones can be used to compare with fossils or bones of the elephant's cousin which roamed Michigan at one time--the mastodons. The elephant has value for both teaching and research."

Baker is considering reconstructing the elephant using the bones, the hide "which weighed several hundred pounds," and the 65-pound apiece tusks, but finding enough room is a problem.

Touberg's donation gives the MSU museum a bragging point. Baker said his museum now has the only complete African elephant in a Michigan museum.

Touberg, described as a friend of the Museum, has also donated the South American Jaguar, and two India tigers.

Regionals Are Here In March

Michigan State has been chosen as one of the four schools to play host to the 1963 NCAA regional basketball playoffs, the association has announced.

Kansas, Maryland and Brigham Young will be the other sites.

MSU will have the mid-eastern playoffs in Jenison Fieldhouse on March 15 and 16, Clarence "Biggie" Munn, University athletic director said Sunday.

Commenting on the NCAA decision, Biggie said:

"I checked with the head of the state high school athletic commission to see that the dates wouldn't conflict with the high school playoffs; called Fordy Anderson, and that was it."

"People who are basketball fans will get to see a lot of teams play. The Big 10 championship team will make a showing and the winner of the regionals will go to the playoffs in Louisville."

"The high school tournament will take place the following week, March 22 and 23," Biggie said.

"This is the first time in the NCAA tourney history that MSU has been chosen to host the regionals," he added.

Bruce Fossum, MSU assistant basketball coach, said: "Fordy and I were in Chicago on Thursday and not sure even then that the regionals would be held here. It is quite an honor."

"But it will be a big job for everyone concerned," he added. Fossum said that the sale of tickets will be in the hands of local people.

He further commented that "since four of the top teams in the country will play here, it is very possible people in this area will get to see the national champion."

Coed Dining Set For Fall

Coed dining comes to the Brody group this fall, Brody officials announced last week.

Women move into Rather and Butterfield Halls at the Brody area for the first time since the buildings were completed.

According to Ted Smith, Brody manager, Butterfield women will eat in the southeast dining room along with Armstrong and Bailey men. Emmons formerly used that dining room. Emmons residents will eat in the Northeast dining room with Rather women and Bryan men.

Smith said there would be revised food choice policies, modified from both women and men menus used in other dorms.



PROUD OF EMBLEMS--This foreign car and Laurie Nosanchuk, Pontiac sophomore, are proud members of the MSU family. Ralph Matt-

hews, owner of the automobile, obtained the unusual license plate in Vermont.

--State News Photo

U.S. Court Makes A Wise Move

U.S. Supreme Court Justice Potter Stewart's decision to reverse the apportionment ruling of the State Supreme Court was a wise one.

According to the dictate of the State Court's decision the legislature would have been faced with the improbable task of coming up with a reapportionment scheme suitable to both parties before the August 7 primary elections.

Various solutions were offered by party leaders, but even with the axe of an at-large election hanging over the heads of the Republican senators they could hardly have been expected to come up with a plan acceptable to the Democratic party when the Constitutional Convention's plan which was formulated after months of study was not completely accepted by the Democratic delegates.

The legislature has had no record of being able to come up with quick decisions on matters of importance.

University funds were appropriated several months behind schedule severely impairing department planning of budgeted expenses.

The only issue the Republican dominated Congress moved fast on was in censoring Communist speakers on college campuses.

Most Republican leaders agree that the Senate needs reapportionment and more on a population basis than at present.

But, we have to agree with Alvin Bentley former congressman, who cites the U.S. Senate as a prime example of a legislative body which is not organized strictly along population lines.

Bentley feels that population should be the most important factor in reapportionment, but that area should play significant role also.

In an at-large election most voters would not be qualified to select a split ticket because of lack of knowledge of the candidates and their stands.

There was a strong likelihood that under the at-large system a completely Democratic or Republican senate would have been elected.

The decision to slow down the reapportionment scramble was a wise one. Now the question arises as to whether the Republican senators will settle back into their ruts and ignore reapportionment and other current issues.

A Chinaman's Chance?

By BEN BURNS
Editor-in-Chief

What is a Chinaman's chance of winning elective office in the United States?

Paul Chien, 35-year-old naturalized citizen from Shanghai, China will give the American system the test this fall.

A philosophical, happy little man, Chien feels that it will speak well for the American democratic system if he pulls even 50 votes in the race for the Republican nomination from the 11th senatorial district.

Chien said it is a compliment to the American system that a person naturalized only two years ago is allowed to run for public office.

An outspoken management consultant, Chien has had plenty of experience with the American system.

A year ago he was found innocent of involvement in a large bank fraud in Mason.

Chien was extremely pleased with his treatment by the court and jury. "I have lived here 14 years and never experienced any discrimination," he said.

Chien has experienced the Communist system too. He fought in the Nationalist Chinese underground when he was 15 and his father, who still lives in Shanghai, now lists his occupation as "a retired banker."

"The purpose in my running is not to win," said Chien, "but to bring the issues before the public."

Chien is campaigning on a small scale. His wife, Helen,



Paul C. Chien

is his campaign manager and the couple arises at 4:30 each morning to go out and put up posters.

His six cheerful little children ring doorbells and the three girls wear dresses embroidered by their mother, which read, "Please vote for my Daddy." A paper boy has volunteered to help distribute campaign literature.

Chien calculates that his campaign will cost between \$97.50 and \$110.

His previous political career consisted of two years as student body president at the University of Shanghai.

Chien has an interesting philosophy about learning. "When I was young I looked to older persons for learning and guidance," he said. "Now that I am older I look to the youths for opinions and feelings, in order to keep abreast of life."

"I like people and try to get to know them, not so I can use them, but so I can learn from them."

"You can learn something from everyone. I know all kinds: janitors, waitresses, professors, administrators, workmen and professional people."

It appears that Chien could pick up his 50 votes from among the MSU acquaintances he greeted during a short lunch hour.

Nominally a Republican, Chien is no diehard partyliner. "You should consider the party second and the people first," he said.

Chien sees no great difference between the ultra-conservative and the ultra-liberal. He said there was little difference between McCarthy, Hitler and Stalin.

"Anyone who claims either of the extremes is expressing immaturity of thinking," said Chien. "You must be able to see the other side's point of view."

Chien is disturbed at tuition hikes at Michigan universities. He said that the university must not yield to pressure and price students out of an education.

Another part of his platform calls for more respect for aged persons, a carryover from Chinese tradition.

Chien said big unions and big business do not have problems, but that the real problems lie with the small independent businessmen and the unorganized wage-earners.

"We need fiscal reform," Chien said, "not an income tax. Some of the legislators are like the doctor, who isn't sure what is wrong with the patient, but gives him a penicillin shot anyway."

"Some politicians are trying to give us an income tax whether we need it or not. The issue should be studied."

What is Chien's idea of a Chinaman's chance? "Just like the saying, nil," he said.

Con-Con Education Section Praised

(Some of the broadest changes suggested in Michigan's proposed new Constitution cover the educational field. Veteran AP newsmen Gene Schroeder and A.F. Mahan sum them up in this story, the sixth of a nine part series on the proposed new Constitution.)

LANSING (AP) -- The education article gets one of the most complete revampings of any in Michigan's proposed new Constitution. And it is likely to draw strong support from those it affects most--the state's educators--despite protests from the majority of Democratic delegates to the Constitutional Convention that it would reduce the State Superintendent of Public Instruction to the status of an executive secretary.

Mrs. Corbetta A. Robinson of Kalamazoo, a Democratic member of the present four-member State Board of Education, described herself as pleased with the article generally and said that "in the long run this appears the way to get the integration and co-ordination needed."

Dr. E. Dale Kennedy, executive secretary of the Michigan Education Association, says he has little doubt that the MEA will endorse the article, and he personally views it "with enthusiasm because it is a darned good section."

Harlan Hatcher, president of the University of Michigan, said "it preserves safeguards" and "went a long way toward the views I set forth in my testimony before the education committee."

The convention's education committee included these def-

gates among its members: Dr. John A. Hannah, president of Michigan State University; Roscoe O. Bonisteel, former Uni-

(Continued on page 8)

Crossword Puzzle

- | | |
|--------------------------------|---------------------------|
| ACROSS | 35. Compendium |
| 1. Above; poet | 27. Heraldic bearing |
| 4. Sharpen | 28. Distant |
| 8. Winnow | 29. Account entry |
| 11. Ancient shaping form | 41. Comply |
| 12. Prepare for an examination | 43. Safe-keeping of goods |
| 13. Tarradiddle | 46. Brown kiwi |
| 14. Moreover | 47. Network |
| 16. Grip | 48. Mouth of Niger River |
| 17. Cupid | 49. Oriental lute |
| 18. Decollete | 50. Periods of light |
| 19. Wings | 51. High explosives |
| 21. Pack | DOWN |
| 23. Jumble | 1. Lout |
| 25. Burdened | 2. Bird |
| 27. About | 3. Peruses again |
| 28. Sp. title | 4. Reflected sound |
| 29. Belgian commune | |
| 30. Conjunction | |
| 32. Fulcrum | |
| 34. Flickertail state; abbr. | |

S	C	A	L	E	M	A	S
C	A	C	O	M	I	S	T
U	L	E	B	O	S	A	T
D	I	F	E	N	E	V	A
O	F	F	E	R	O	R	E
O	L	D	J	U	G	G	N
W	R	Y	C	U	T	W	E
A	N	P	O	T	C	H	E
R	I	P	E	N	S	H	Y
P	A	I	R	A	K	E	A
K	I	N	N	I	K	I	N
E	L	I	A	N	T	A	E

Thursday's Solution

- | | |
|--------------------|--------------------------|
| 5. Bedizenment | 15. Lineage |
| 6. Pike-like fish | 16. In what way |
| 7. Type square | 18. Church gallery |
| 8. Sweep along | 19. Wolf-hound |
| 9. Afflict | 20. Country |
| 10. Man's nickname | 22. Close -- |
| | 23. Register |
| | 24. Arrow poison |
| | 26. Twelve o'clock |
| | 28. Quiescent |
| | 31. Artificial language |
| | 33. One who tills |
| | 35. A page |
| | 36. Card player's pool |
| | 38. Time unit |
| | 40. Drives a nail |
| | 41. Food bit |
| | 42. Constrator |
| | 43. Over-whelming amount |
| | 44. Side arm |
| | 45. Common ending |
| | 47. Highway; abbr. |

STATE NEWS

ALL-AMERICAN ACPA Rating

Member Associated Press, United Press International, Inland Daily Press Association, Associated Collegiate Press Association, Michigan Press Association.

Published by the students of Michigan State University. Issued on class days Monday through Friday during the fall, winter and spring quarters; twice weekly during the summer term; special Welcome Issue in September.

Second class postage paid at East Lansing, Michigan.

Editorial and business offices at 341 Student Services Building, Michigan State University, East Lansing, Michigan. Mail subscriptions payable in advance: 1 term, \$3; 2 terms, \$4; 3 terms, \$5; full year, \$6.

Editor.....Ben Burns
Managing Editor.....James Wallington
Photo Editor.....Dave Jaehnitz
Advertising Manager.....Fred Levine
Circulation Manager.....Henry Tinkham

Trustees Approve Changes

The Board of Trustees gave approval July 19 to 18 appointments, 22 leaves, 22 miscellaneous changes and transfers, 19 resignations and terminations and two retirements.

Richard U. Byerrum, professor of biochemistry and assistant provost, was appointed dean of the College of Natural Science, effective Aug. 1.

Changes also included appointment of James D. Rust, associate professor of English, as assistant dean of the College of Arts and Letters, effective Aug. 1. Donald W. Olmstead, associate professor of sociology and anthropology, was assigned as assistant dean of the College of Social Science.

J. Geoffrey Moore, associate professor of humanities, was transferred to associate professor in the College of Social Science and of Education and appointed assistant dean of the College of Social Science.

Herman L. King and John W. Zimmer, who were assistant deans in the College of Science and Arts, were named assistant deans in the College of Natural Science.

Appointments were approved as follows: John A. Catey, 4-H agent, Montcalm County, July 1; Aune I. Nelson, home economics agent, Manistee County, Aug. 15.

Carl J. Couch, assistant professor, extension personnel development; Noah Alonzo, instructor, art; Ralph P. Carrett, assistant professor, English; Reed Moyer, assistant professor, marketing and transportation administration; Billie D. Gamble, instructor, nursing; Pamela R. Shaffer, instructor, nursing, all Sept. 1; James W. Beck, instructor, mechanical engineering research, Aug. 15.

Other appointments approved were: Samuel Krislov, associate professor, political science; Thomas C. Kishler, assistant professor, American thought and language; Fannie Leonard, assistant professor, natural science; Steven E. Deutsch, instructor, social science and labor and industrial relations.

Wolf D. Fuhrig, instructor, social science; Thomas H. Hay, instructor, social science; Carol Harding, instructor, intercollegiate athletics; Douglas A. Stuart, instructor, institutional research; Ronald L. Davis, assistant professor of humanities, all Sept. 1.

Sabbatical leaves were granted for: William J. Walsh, associate professor, education, March 20 to Sept. 19, 1963, for writing and research; Alan P. Grimes, professor, political science, March 28 to June 8, 1963, to write in Mexico; Donald L. Grummon, professor of

psychology and director of the counseling center, Jan. 1 to April 15, 1963, to study and travel in Africa and Europe.

Leaves were also approved for: Margaret Hearn, associate professor, textiles, clothing and related arts, April 1 to June 30, 1962; Howard G. Grider, contract auditor, business office, July 16 to Aug. 31, 1962; Thomas W. Nagle, assistant professor, social science, Sept. 1, 1962 to June 30, 1963, military leave; James D. Jakus, painter I, buildings and utilities, July 16, 1962 to Jan. 17, 1963, military leave.

Other leaves included: Munns A. Caldwell, horticultural agent, Berrien County, Aug. 6, 1962 to Aug. 5, 1964, to work for the Department of State's Agency for International Development; John A. Speicher, dairy agent, Lapeer County, Oct. 1, 1962 to Sept. 30, 1963, to work on a doctorate at MSU; Martin R. Hurtig, assistant professor, art, Sept. 1, 1962 to Aug. 31, 1963, to teach at the University of Illinois; Gardner M. Jones, professor, accounting and financial administration, March 16 to June 15, 1963 and Aug. 1 to 31, 1963, to study, travel and lecture in Europe.

Roland F. Salmonson, associate professor, accounting and financial administration, Sept. 1, 1962 to Aug. 31, 1963, faculty residence at Arthur Andersen Co.; John H. Hoagland, associate professor, personnel and production administration, Sept. 1, 1962 to Aug. 31, 1963, research and writing in East Lansing; George L. Brandon, associate professor, education, July 23 to Dec. 15, 1962, to work for Federal Vocational Education.

Leaves were also approved for: John M. Mason, professor, education and Science and Mathematics Teaching Center, Sept. 1, 1962 to Aug. 31, 1963, to work at the University of Florida; Charles C. Sigerfoos, associate professor, mechanical engineering, Aug. 1 to Dec. 31, 1962, to work with the Agency for International Development in Mexico and Venezuela; Barbara Deskins, instructor, foods and nutrition, Sept. 1, 1962 to Aug. 31, 1963, to study and travel in Europe; J. F. Fraser, research associate, physics and astronomy, Sept. 1, 1962, for an indefinite period, to obtain a National Science Foundation grant.

Milton C. Taylor, professor, economics, Sept. 1, 1962 to Aug. 31, 1963, to work for the Pan American Union; Victor G. Strecher, assistant professor, police administration, Sept. 1, 1962 to Aug. 31, 1963, to study at Washington University; William A. Knoke, adviser, Brazil Project, July 22 to Aug. 7, 1962; Lawrence T. Frymire, manager of WKAR, Oct. 1,

1962 to Aug. 31, 1963, position with Federal Communications Commission.

New assignments, designations and changes in status were approved by Trustees as follows: change Carlos G. del Prado from instructor to assistant professor of foreign languages; assignment of John M. Mason, professor, to the Science and Mathematics Teaching Center, the College of Education and the College of Natural Science, July 1, 1962; change Myron S. Miller, assistant professor, from the Department of Natural

Science to the Department of Mathematics, July 1, 1962.

Termination of the assignment of Leo G. Erickson, professor of business, to the Brazil Project, July 30, 1962; assignment of Armand L. Hunter, director of Broadcasting Services, to the Brazil Project, July 7 to Sept. 6, 1962, and for Sept. 14 and 15, 1962; assignment of William W. Sinclair, educational adviser and assistant professor in the Nigeria Program, to the University of Nigeria, June 30, 1962 to June 29, 1964; reinstatement of Wells Williams, assistant

professor, to the natural science department, July 22, 1962, (he has been assigned to the Nigeria Program since Jan. 15, 1962).

Other assignments included: assignment of Merle L. Eamay, professor of agricultural engineering, as chief of party for the Taiwan Project, Aug. 4, 1962 to Sept. 15, 1964; reinstatement of Guy H. Fox as professor of political science, July 1, 1962, (he has been assigned to the Viet Nam Project since Jan. 4, 1960).

(Continued on page 5)

OPEN EVERY WEDNESDAY EVENING
UNTIL NINE

now in progress!

SALE

our entire stock of summer

SUITS, SLACKS and SPORT COATS

drastically reduced!

Timely savings on
men's summer clothing

SUITS: Mohairs, dacron-worsted blends, all-wool tropicals, wash and wear dacron-cotton cords and poplins.

SPORT COATS: Dacron-cotton checks, plaids, stripes

SLACKS: Dacron-worsted blends and dacron-rayon blends



Jacobson's

MEN'S SHOP
210 Abbott Road

Lillian Brillhart says:

Take advantage
of our special
Coed Discount
Days....

**COED
SPECIAL
DAYS**

MONDAY, TUESDAY & WEDNESDAY

★ PERMANENT

★ HAIRCUT

★ STYLE only \$10

**UNIVERSITY
BEAUTY SALON**

2 Doors East of Campus Theater ED 2-1116
Free Parking In Campus Theater Lot
We recommend Gabrielleen Permanent Waves



Lillian Brillhart



UNIVERSITY FELLOW--Donald C. Sawyer, left, of MSU, and Kerry Ridgway, Colorado State University, discuss a point at the Morris Animal Foundation Annual Conference in Denver. The foundation approved a research request by Dr. Sawyer, and granted him a fellowship to study joint diseases in dogs.

Changes Approved

(Continued from page 3)

Harvey J. Belter, agricultural agent, Cass County, to horticultural agent, Berrien County, Aug. 13, 1962; Harold L. Dahnke, associate professor of education and assistant director of institutional research, to associate professor of education and director of space utilization, University Secretary's Office, Aug. 1, 1962.

Change in status of Jack Stieber, professor of economics and director of the Labor and Industrial Relations Center, to half-time from Sept. 15, 1962 to Dec. 31, 1962, to serve as Executive Secretary to the President's Advisory Committee on Labor-Management Policy; assignment of Donald F. Aschom, instructor in Continuing Education, to the India project, July 23.

Assignment of Myril B. Reed, professor of electrical engineering, to the India project, Aug. 15; assignment of Frank S. Roop, Jr., instructor in mechanical engineering, to the India project, Aug. 8; and transfer of Albert E. Levak, associate professor of social science to associate professor of social science and Continuing Education.

Sept. 1.

Retirements were approved for M. H. Avery, Ingham County extension director, an employee of the University since June 16, 1929, effective Sept. 1, and for Dennis L. Clananhan, assistant professor of farm crops, an employee of the University since July 1, 1930, effective Aug. 1.

Resignations were accepted as follows: Frank V. Gendron, field dairyman, Sept. 30; E. L. Marietta, associate professor, business services and education, Aug. 31; John H. Thurber, instructor, speech, Aug. 31; Harry W. Sundwell, associate professor, education, Aug. 31.

Hinrich R. Martens, instructor, mechanical and electrical engineering, Aug. 31; William E. Taylor, professor, metallurgy, mechanics and material science, Aug. 31; George W. Gillett, assistant professor, botany and plant pathology, Aug. 31; Gordon L. Georner, associate professor, chemistry, Aug. 31.

Other resignations accepted

Housing

(Continued from page 1)

men, but officials moved to ease their situation.

Dutch explained men are more flexible when it comes to living conditions because they are not as fussy and own fewer bulky clothes.

Owens graduate hall still had single rooms available, although the doubles are filled, Dutch said.

Dutch predicted that his staff would be swamped during the first weeks of fall term with men who had not signed up for the dorms and had not bothered to secure off campus housing in the spring.

Dutch said, "there will be hundreds of fellows looking for housing that just isn't there."

One reason Dutch cited was that a large number of students over 21 have not taken advantage of the regulations changes and have remained in approved housing.

were: Patrick H. Doyle, associate professor, mathematics, Aug. 31; Frank C. Child, associate professor, economics, Aug. 31; Max G. Mueller, assistant professor, economics, Aug. 31; Paul M. Shields, instructor, police administration and public safety, Aug. 31; Ralph M. Goldman, associate professor, political science and continuing education, June 30.

Howard A. Scarrow, assistant professor, political science, Aug. 31; Daniel R. McLaughlin, assistant professor, continuing education, Aug. 31; Carleton C. Dennis, assistant professor of agricultural economics, Aug. 31; Bert C. Cross, assistant professor of journalism, Aug. 31; and Arnold Brekke, associate professor of social science, Aug. 31.

open all summer and will be open the Saturday and Sunday before registration to accommodate the increased flow of information requests.

Revamped housing rules may ease pressure on off-campus housing. Under the new policy, men and women 21 and over may live in unapproved, unsupervised housing with parental permission.

However, upperclassmen un-

in housing within East Lansing city limits, which may put pressure on sophomore and junior men who might not be able to get into a dormitory.

Old regulations allowed only for unsupervised for single men over 25 and veterans with 21 months service if they were in upper college and had 2.0 or better point average. Only women over 25 were allowed in unapproved housing.



"Central Michigan's Favorite Playground"

LAKE LANSING AMUSEMENT PARK

FAMILY NIGHT WEDNESDAY

- Admission
- Parking
- Picnic Area

FREE

SPECIAL REDUCED PRICES for All Picnic Groups
Call FE 9-8221 for reservations

Weekends & Holidays Open Week Days
12 noon - 12 midnight 2-5 pm 7-12 pm except Monday





Clothes too Baggy?

Or too Small?

Let us restore those misfits

Expert Sizing



Cleaner and Shirt Laundry

Fast Service

Louis

East Grand River Across From Student Services Building

JFK

Coloring Book

only

\$2.00

SPARTAN

BOOK STORE

corner of Ann & M.A.C.

WKAR Has 40-Year History

LONGEST ON DUTY--John Blakeslee, chief engineer of WKAR has piled up the longest string of years of employment with the 40-year-old university radio station--25 years.

--State News Photo.

14th Annual TALENT ON ICE WORLD'S BEST AMATEUR SKATERS

Sanctioned by USFSA

8:15 P.M.
WEDNESDAY AUG. 1ST

Tickets Now Available

Day and Night

BALCONY 75¢

RINKSIDE SEATS \$1.00

**Michigan State University
ICE ARENA**

M.S.U. FOREIGN FILM SERIES

presents

"LOVE AND THE FRENCHWOMAN"

(FRENCH)

"Spicy, Racy, Hilarious
& Highly Sophisticated"
--N.Y. WORLD TEL. & SUN

Fri., Sat.-Aug. 3 & 4-7:30 p.m.

FAIRCHILD THEATRE

Admission: 50¢

COOL Air Conditioned NOW!
60¢ to 5:30

CAMPUS THEATRE

4 Boys from Connecticut & 1 Girl
in New York Plus One Hideaway in Manhattan
add up to the most uproarious design for loving in years!

MGM AND JOSEPH E. LEVINE PRESENT

KIM NOVAK JAMES GARNER TONY RANDALL

IN A MARTIN RANSQHOFF PRODUCTION

Feature
1:00-3:05
5:15-7:25
9:30

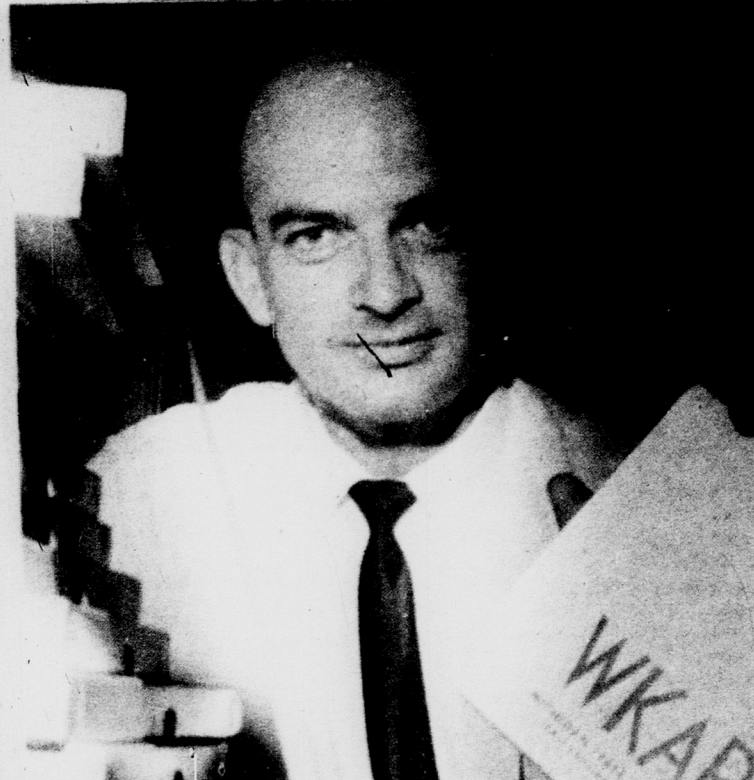
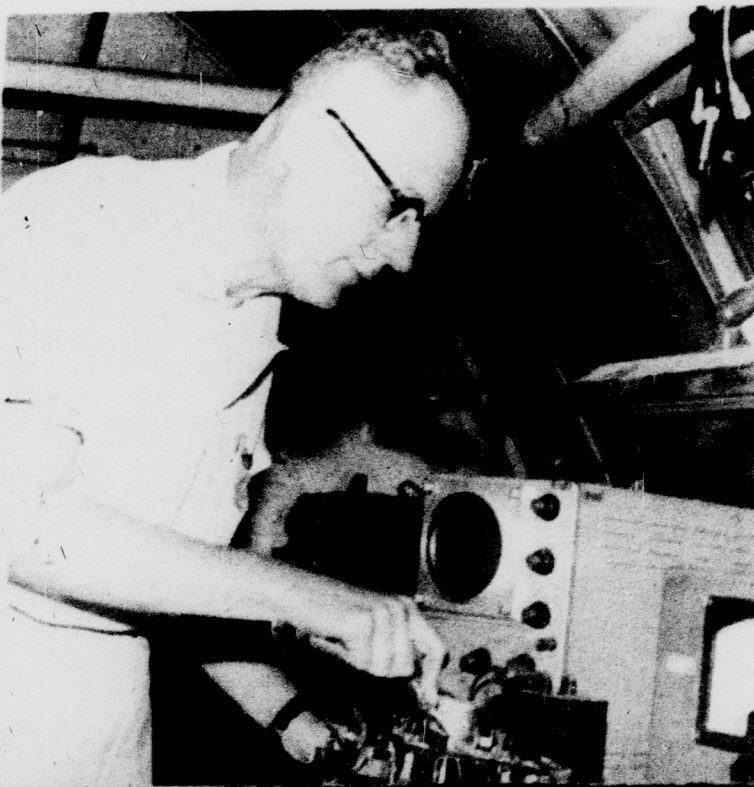
**BOYS'
NIGHT
OUT**

CO-STARRING
JANET BLAIR PATTI PAGE

KIDDIE KARTOON KARNIVAL

Wednesday Matinee 1:00 to 3:15 PM. a wonderful
feature attraction!

"LONE RANGER and the CITY of GOLD"
plus Bugs Bunny Cartoon Festival



MILES OF TAPE--Dick Estell, production and facilities manager of WKAR, displays just a few of the dozens of program tapes sent daily from the university-owned radio station to other radio stations for broadcast. WKAR is celebrating its fortieth anniversary.

--State News Photo.

First Sites Were Wells Olds Halls

By SUSAN JACOBY
Of The State News Staff

A series of "firsts" has characterized MSU radio station WKAR throughout its 40-year history.

Broadcasting activities began when some ingenious students rigged World War I wireless sets to transmit slightly ribald songs between Olds and Wells halls. A wider audience overheard the broadcasts, however, and they were speedily replaced by more orthodox programs.

Students using equipment from the Electrical Department transmitted programs over a station with call numbers 8YO. President David Friday spoke to alumni groups over the station in 1922.

WKAR's first broadcast as MSU's official college station originated in March, 1923, from fourth-floor offices in the Home Economics building.

Under the direction of James B. Hasselman, WKAR became America's first radio station to broadcast college basketball games.

One could hear broadcasts during the 1920's such as "Farmers' Stories" by Mrs. Dora H. Stockman or G. W. Bradt's "Ten-minute Talks on Turtles."

The early 1930's saw WKAR broadcasting restricted by the federal government to one-half hour at noon and one hour during the afternoon.

By 1937, the station was broadcasting during daylight hours six days weekly. Programs ranged from child development to soil management. Direct broadcasts from J. T. Caswell's government classes highlighted the schedule. "Adventures in Music," America's first program designed for listening by rural schools, appeared in 1936.

Previously connected with the Cooperative Extension Service, WKAR was recognized as a separate department in 1940. Its power increased to 5,000 watts, the station boasted new studios in the University auditorium and an antenna where Shaw Hall now stands.

WKAR added an FM station in 1948 to extend its broadcasting range beyond sunset.

Celebrating its 40th anniversary this year, WKAR broadcasts an average of 96 hours per week. Its cultural and education programs reach audiences in Michigan, Ohio, Indiana and Ontario, Canada.

WKAR presents educational and public service features, including sports, news and good music. Programs range from live symphony concerts to African news reports. WKAR was awarded radio's highest honor, the George Foster Peabody Award for outstanding service in radio broadcasting, in 1957.

WKAR operates a tape service which supplies rebroadcasts to

(Continued on page 7)

The Negritos, a pygmy tribe of the Federation of Malaya, live in lean-tos furnished only with a sleeping platform. Sleepers sometimes roll out of bed into smoldering fires built alongside the platform to drive away mosquitoes.

COOL Air Conditioned HURRY LAST 4 DAYS
654 to 5:30 P.M.
Feature at 1:25-4:05-6:40 and 9:20 p.m.

PROGRAM INFORMATION
TV 5-6485

c'est la vie...it's gay Paree!

Walt Disney
presents
BON VOYAGE!

FRED MACMURRAY
JANE WYMAN
MICHAEL CALLAN DEBRA WALLEY

STARTING SATURDAY, AUG. 4th

JAMES STEWART MAUREEN O'HARA

Mr. HOBBS Takes a VACATION

FABIAN

CHINEMASCOPE
COLOR BY DE LUXE



(Continued from page 6)

85 commercial Michigan stations.

Lawrence T. Frymire became manager of the station in 1958.

WKAR's services today are basically unchanged from those of 1951, when the station director received a letter from a Michigan housewife. She said, "Each evening at the dinner table, the conversation is not what I have done about the house today, but what I have learned at Michigan State today."

STATION MANAGER--Larry Frymire, manager of 40-year-old radio station WKAR, shows off some modern, expensive recording equipment which is used to prepare programs for dozens of radio stations.

--State News Photo.

Farming Is Risky Life

Farming is the third most dangerous occupation in the United States today. A death occurs every 47 minutes and a disabling accident every 33 seconds on the nation's farms.

Accident reports rank it right behind mining and construction statistics are also a "farm work as a hazardous occupation problem."



15¢ HAMBURGERS

TODAY ...
and WED.!

FIRST SHOW 7 P.M.

FEATURE STARTS

7:35-9:45 p.m.

THE BEST IN FOREIGN FILMS

STATE

THEATRE

332-2814 PROGRAM INFORMATION 332-5817

"AS MUCH FUN AS A BARRELFUL OF MONKEYS."
The New Yorker

"THE PRIGGISH HAD BEST STAY AWAY."
The Saturday Review

JEAN RENOIR'S *Picnic on the Grass*

starts THURS.! ONE DAY ONLY!

OPERETTA FILM SERIES CLASSIC



Great Music! Greater Romance!

Of all the famed love stories told in melody by Metro-Goldwyn-Mayer, the screen has never beheld such a masterpiece of immortal music...imperishable romance! Take your sweetheart to see the thrilling entertainment they have made of the life... the fiery romance... of Johann Strauss II, World's Waltz King!



Great Waltz

LUISE FERNAND MILIZA
RAINER GRAVET KORJUS

with **HUGH HERBERT LIONEL ATWILL**

And Cast of Thousands!

HEAR A huge orchestra, rousing choruses, soloists... in "Blue Danube Waltz", "Tales of Vienna Woods"... many other great Johann Strauss melodies!

starting FRIDAY!

TWO FAVORITES RETURN...

THE MARK **The VIEW FROM THE BRIDGE**

Program Information TV 3 3905

COOL Air Conditioned

MICHIGAN

NOW ... From 1 P.M.

FEATURE STARTS

Shown at 1:00, 3:45, 6:30, 9:20 P. M.

Here comes the MUSIC MAN

Meredith Willson's



THE MOST MARVELOUS MOVIE EVER MADE! FROM THE PLAY THAT KEPT PLAYING FOREVER!

ROBERT PRESTON • SHIRLEY JONES

BUDDY HACKETT • HERMIONE GINGOLD

PAUL FORD

TECHNICOLOR

PRESENTED BY WARNER BROS.

STARLITE

FOLLOW W. ST. JOE

2 Miles Southwest of Lansing on M-78

HELD OVER FRIDAY—THURSDAY

Here comes trouble

Shown Once—10:29

Jessica

a most mischievous girl!



She's the most luscious forbidden fruit that ever dropped into the screen's lap!

PARAVISION TECHNICOLOR

C6-FEATURE (Second Run) Once At 8:40

AUDREY HEPBURN

SHIRLEY MACLAINE

JAMES GARNER

THE CHILDREN'S HOUR

MIRIAM HOPKINS • FAY Bainter • KAREN BALKIN



Starts Friday Aug. 10

Gates Open 7:30

"EL CID"

CHARLTON HESTON SOPHIA LOREN

Admission 90¢

Try Henry's Once

**YOU
WILL RETURN**



Make Henry's A Habit

1153 Michigan -- one Block West of Brody.

Try A State News Want Ad

Con-Con Education Section Praised

(Continued from page 2)

versity of Michigan regent; Dr. Charles Anspach, former president of Central Michigan University, and George Romney, who once headed a study group that won approval of 100-plus changes in the Detroit school system.

First off, the new article would expand the State Board of Education from four to eight members elected on partisan ballots from the State at-large. It would increase the terms of members from six to eight years.

Next, it would empower the board to appoint the State Superintendent of Public Instruction, who would be its chairman but have no vote in board actions. Now the superintendent is elected at-large for a two-year term and is a voting member of the board.

The Governor also would be an ex-officio (without vote) member

of the new board. Romney, a Republican candidate for Governor, insisted upon gubernatorial membership.

The board is directed to "serve as the general planning and coordinating body for all public education, including higher education," and to "advise the legislature as to the financial requirements" for the various segments of education.

It also is charged with "leadership and general supervision over all public education, including adult education and instructional programs in State institutions, except as to institutions of higher education granting baccalaureate degrees."

Thus boards which would control the various colleges and universities are left "to supervise their respective institutions and direct the expenditure of the institutions' funds." But they would

have to go through the State Board to the legislature with their requests for funds and accept co-ordination and planning policies set by the board.

Some major changes were made in college and university governing boards.

Michigan State University's Board of Trustees and Wayne State University's Board of Governors would be raised from six to eight members to be elected to eight-year instead of six-year terms. Thus they would parallel the University of Michigan's Board of Regents.

Similar eight-member, eight-year boards would be created to govern each of the State's other colleges and universities. The latter, however, would be appointed by the Governor with Senate advice and consent, whereas the Michigan, Wayne State, and Michigan State boards would be elected "as provided by law," which now is as party nominees from the state at-large.

The new Constitution also would require the legislature to provide for establishment of community and junior colleges, "which shall be supervised and controlled by locally elected boards."

It also is instructed to provide by law for an eight-member, eight-year State board for community and junior colleges "which shall advise the State Board of Education concerning general supervision and planning for such colleges."

The State Board of Education, now the governing body for all universities and colleges other than the big three, would appoint the junior colleges advisory board.

"The legislature shall," the new document says at one point, "appropriate moneys to maintain the University of Michigan, Michigan State University, Wayne State University, Eastern Michigan University, Michigan College of Science and Technology, Central Michigan University, Northern Michigan University, Western Michigan University, Ferris Institute, Grand Valley State College, . . . and other institutions of higher learning established by law."

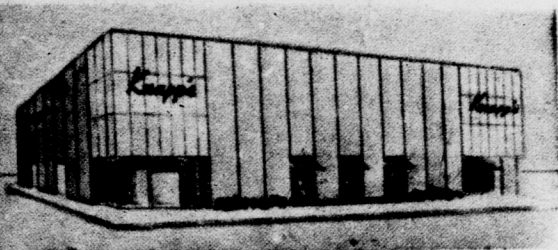
This would be the first constitutional recognition for others than the Big Three, but the Constitution would carry something brand new for Wayne, Michigan and Michigan State, too.

It provides that "the legislature shall be given an annual accounting of all income and expenditures" by all of the colleges and universities, and that formal sessions of their governing boards "shall be open to the public."

Under prodding of the Michigan Press Association and others, Big Three boards have opened their formal sessions over the

(Continued to page 11)

Knapp's East Lansing—Open Wednesday 12 noon to 9 P.M.



**Woven all-cotton
Tommiestretch
PAJAMAS**

\$6

Tommiestretch for complete comfort during your slumber hours. Tommiestretch pajamas move with you, never bind because they're made of a wonderful all-cotton stretch fabric. Easy care, too! White with blue piping, sizes 32-38.

LINGERIE- GARDEN LEVEL

**Jonathan Logan's
two part knit in
Orlon® Acrylic**

14⁹⁵

Ticketed for travel... The two part knit in 100% Orlon®. The Italian collared overblouse tops a sheath skirt... a matching string belt sashes the waist. Hand and machine washable only. Red and black in Junior sizes.

® Registered Trademark.

KNAPP'S DRESSES- STREET LEVEL



**LAST 4 DAYS!
Knapp's Wonder-Value
HOSIERY SALE!**

87¢

PAIR

3 PRS. 2.50.....6 PRS. 4.75

Don't miss Knapp's Wonder Value hosiery at this special price. All popular styles at one low, low price. Get yours now in Wonder Value's fashion shades. Sizes 8½ to 11, S-M-L.

HOSIERY- STREET LEVEL

BAPTIST STUDENT FELLOWSHIP

American Baptist
Student Foundation

Discussion at 7:30 Every
Tuesday evening through
the summer quarter.

DEPTH BIBLE STUDY

At Baptist Student Center,
332 Oakhill, E. Lansing
Rev. James W. Didier,
Baptist Chaplain
Phone ED 2-8472

Ice Show Set For Wednesday

The 14th annual summer ice session being held at the MSU Ice Arena will put on its second ice show of the summer on Wednesday, Aug. 1, at 8:15 p.m., said Norris Wold, manager of the Ice Arena.

The show, featuring skaters from all over the country, will consist of 22 acts including solo, pair and group numbers. The skaters, all of amateur rank, range in ages from 10 to 18. The acts will be highlighted by spotlights, music and costumes, said Wold.

Some of the performers, holding many gold medals from all over the world, are Joya Utermehlen, Albertina Noyes and Myrna Bodek.

Admission will be \$1 for rink-side seats and .75 for seats in the balcony.

The summer ice session is sponsored by the Lansing Skating Club and Michigan State University and is sanctioned by the United States Figure Skating Association. It consists of eight weeks of training under such instructors as Eugen Mikeler, Montgomery Wilson, Jack Jost, Pierre Brunet, Beryl Williamson and Wold.

The 126 registered skaters participating in the session are training to build a skating team to represent the U.S. in international competition. All the mem-

bers of the American figure skating team were killed in an airplane crash in 1961.

Judges from all over the country come to East Lansing to evaluate the performances of the skaters during the session from June 23 to Aug. 19.

"We have the largest summer skating school in the U.S. and Canada," said Wold.

The MSU session, which has a world-wide reputation, has been the training site for such stars as Carol Heiss, Don Jackson, Bradley Lord, and Doug Ramsey.

During the session, the skaters rise early and sometimes practice 10 hours a day, reworking the same figure over and over, said Wold. The entire family gets involved around the young hopeful.

Some families just pack up and follow their youngster to East Lansing.

McDonald Chain Plans New Unit

The McDonald's hamburger chain has announced the construction of a new unit in East Lansing at 234 West Grand River, west of People's Church.

Part of a nation-wide expansion program for the firm, the \$125,000 structure will employ about 30 persons.

Ministry Finds Few Men

HELP WANTED!

Intelligent, highly capable young man needed for job with long hours, low pay, great pressure. Must be a leader, administrator, psychologist, sociologist, counselor, diplomat and theologian.

Unfortunately, but understandably, not enough young men are answering this call to the ministry today, says the Rev. B. B. Maurer, director of research and development for the Lutheran Church in America, Harrisburg, Pa.

Throughout the country, he points out, many churches are without pastors, and many ministers are attempting the "hopeless" job of trying to serve two or three parishes.

In addition to the long hours, painfully low pay and crushing pressure, the position has lost much of its old-time prestige, says Maurer, who participating in a Town and Country Leadership School until July 27 at MSU.

Once, ministers were often the only truly educated men in their communities, people command-

ing great respect, he notes. Today, he adds, the scientists, the professional men, the "money men" command the prestige.

But, Maurer proudly declares, the position boasts the best "Boss" in the universe, and offers an inner satisfaction found in no other profession.

Maurer should know. Once a

successful industrial engineer with a leading corporation, he left it all to follow the ministry, and happily testifies he has never regretted the decision for an instant.

Yugoslavia produces aluminum for the United States and other customers. It turned out 26,000 tons in 1960.



Number 3 GIANT HAM

A loaf of our special
Italian Bread filled with
Ham, Salad Dressing & Lettuce

Casa Nova

Open 11 A.M.
211 M. A. C.

Air-Conditioned
ED 7-1668

We Know...



students
are
particular
about
their
clothes

Let our individualized attention take good care of your laundry problems. Each article done exactly the way you want it.

One-hour dry cleaning and shirt laundering at no extra charge --everyday including Saturday!

Same day service on wash pants and shirts.

Open

Mon Thru Fri
till 9 pm
Saturday
till 7pm

Flash
CLEANERS
A SHIRT LAUNDERERS

and Coll. Op Dry Cleaning

FRANDOR Shopping Center

FLASH CLEANERS FRANDOR FLASH CLEANERS

BOOK SALE

9¢ AND UP

NEW TITLES ADDED DAILY

AT

GIBSON'S
BOOKSTORE

CORNER W. GRAND RIVER & EVERGREEN

Typewriter Sold First Day!



- AUTOMOTIVE
- EMPLOYMENT
- FOR SALE
- FOR RENT
- LOST & FOUND
- PERSONAL
- PEANUTS PERSONAL
- REAL ESTATE
- SERVICE
- TRANSPORTATION
- WANTED

DEADLINE:

9:30 a.m. one class day before publication

PHONE:

355-8255 or 8256

RATES:

1 DAY.....\$1.00
3 DAYS.....\$2.00
5 DAYS.....\$3.00

Based on 15 words per ad

There will be a 25¢ service and bookkeeping charge if this ad is not paid within one week.

★ Automotive

Falcon 1961 2-door turquoise, Automatic, fully equipped, excellent condition, 10,000 miles. Call 355-9845. 12

1958 Ford Fairlane 500 Hardtop. Excellent Condition. Call 355-8234 after 5:00 P.M. 12

'56 Rambler. Dealer price \$300-\$350. Will sell at half price for quick sale. ED 7-0415. 12

Ford 1954 - 6-standard, radio, new tires - battery. Excellent Body-Motor. Leaving country. 337-2779, 355-4111. 12

Chevrolet 1959 Impala Club Coupe. V-8, automatic, power steering. This car has actual 30,000 miles. It was driven by one owner. Get the Best from LAY AND MATTHEWS, 1322 E. Michigan, IV 5-2243. C

1956 Ford Thunderbird!

1954 MG - A sharpie!

LETTICH & STENBERG
2628 E. Kalamazoo
484-3229

LAY AND MATTHEWS, 1322 E. Michigan, IV 5-2243. Do you want to sell your car? See us. We trade up or down. Buy any make or model. C t.f.

Convertibles 1960-1961, Impala, Le Sabres, Super 88. Exceptionally clean, one owner Sports cars. All power equipped. None finer in Michigan!

Corvairs 1961 '700' Series. 2-door and 4-door. 3 & 4 speeds.

1962 Impala Super Sport 409, 4-speed. Immaculate Ivory finish, black leather interior. Bucket seats. 3,100 original miles.

SPARTAN MOTORS INC.

3000 E. MICHIGAN
IV 7-3715

★ Automotive

1956 Plymouth 4-door sedan, 6-cylinder automatic with new engine and transmission \$425.

1957 Dodge-2 door 6 automatic, radio, heater, white walls. \$495.

DAN O'SHAUGHNESSEY

2501 E. Michigan
DIAL IV 9-2388 C

AUTOMOTIVE REPAIR

Simonize Wax Job--\$18.50!
Mel's Auto Service
315 W. Grand River
332-3255 14

COMPLETE FOREIGN CAR SERVICE

MINOR TUNE-UP- \$9.80 On all 4-cylinder foreign cars. Brake work, transmission work, engine rebuilding on all foreign cars.

1962 Volvo Demonstrator at Big Savings!

STRATTON SPORTS CAR CENTER

1915 E. MICHIGAN
DIAL IV 4-4411 C

NO GUESSWORK WHEN WE SERVICE Your Car. We do a thorough job, bumper to bumper. Charted lubrication, oil change, battery check, tire check, safety check. No points missed!



SPARTAN TEXACO SERVICE
CORNER GRAND RIVER
and SPARTAN
Phone 337-9034 C

★ Employment

NO MONEY FOR VACATION? Start now and earn that needed money by being an Avon Representative. Write or phone - Mrs. Alana Huckins, 5664 School Street, Haslett, Michigan, IV 2-6893. C12

PART TIME Woman over 21 years of age for telephone advertising work from our offices. Hours 6 P.M. to 9:30 P.M. Monday through FRIDAY. \$1 to \$2 per hour. Call IV 2-0616 after 3 P.M. Ask for Mr. Emerick. Arthur Murray School of Dancing. 14

Teacher--Third Grade--Henrietta Community School, Jackson County, 10250 North Meridian Road, Pleasant Lake, Michigan. Phone or write: Superintendent David J. Young, Jackson ST 4-7400, Pottersville MI 5-7773. Modern Well Equipped 16 room school 29 miles south of campus--Salary range: Degree--\$4,500 to \$5,500; Non-Degree--\$4,000 to \$5,000. 12

COED MODELS needed for Summer and Fall State News promotions. Come to the State News Office, room 341 Student Services Building after 3. No calls Please.

★ For Rent

T. V. RENTALS-- For your room or apartment. From \$5 -- \$7 a month. ALL SETS GUARANTEED. Phone NEJAC T. V. RENTALS ED 28978 or 489-1684. C

★ For Rent

APARTMENTS

Furnished apartment 3 rooms, private entrance and bath. Available summer and fall terms. Call ED 7-7603. 13

Furnished apartment upstairs, private entrance, gas heat, garage. \$75/month. 2241/2 Bingham. Near College bus line. IV 4-3193. t.f.

Apartment - 4 students, 4 rooms including showers. Recreation room with fireplace. Parking available. Close to bus line. ED 2-3980. 14

Clean, cozy, 3-room basement apartment. Private entrance, shower bath, parking. Utilities except lights. Call IV 5-0553. 16

First floor studio apartment, private drive and entrance. Utilities except electricity. Married couple or two male graduate students. ED 7-7628. 16

HOUSES

7 room furnished house. Men or women students for summer and fall. Call ED 2-3792. t.f.

Lovely 8-room furnished house near Frandor. Available now. Ideal for 4-5 students. Call 355-1245. 16

ROOMS

1 single available until September 1 for girls. Double room available for fall. Close to campus. ED 2-5621. 12

WOMEN. Last 5 weeks of summer school. Double room with twin beds. Approved. Close-in. ED 2-2155. 12

East Lansing. Rooms for summer. 2 blocks from campus. Call ED 2-0205 after 5:30 or weekends. 443 Grove Street. 12

For rent. Single and double rooms approved for men. Across from Mason-Abbott. Includes free parking and excellent meals. Call ED 7-9230 or ED 2-8635 for Dick Ross. 13

Approved supervised rooms for men. Spartan Hall, 215 Louis, ED 2-2574. t.f.

GENTLEMEN: Private room two blocks from Union Bldg. Available August 1st. One half rent free in return for light duties. Call ED 2-1441 after 6 P.M. 13

Singles and doubles, Spartan Hall, 215 Louis, 1 block from campus. Parking and laundry facilities. ED 2-2574. t.f.

★ For Sale

Scuba Equipment. Twin pac, scuba regulator, volt fins and mask. Reasonable. Call 489-2595. 12

SEWING MACHINE. \$1.50 per week or \$41.10. Will handle the 1961 model zig zag. Fancy stitches, buttonholes, etc., plus twin needle sewing. IV 9-3011. 13

Porta-Crib \$11.50, stroller \$9.75. Like new. Also Underwood typewriter. 485-6963. 14

ZIG-ZAG SINGER sewing machine, does fancy stitches, button holes, etc., without using attachments. Just dial. Must sell for \$68.20 or take on payments of \$6.82 per month. IV 5-1705. 13

Typewriter Royal Portable (Quite De Luxe) Like New! MUST SELL. Improve Your Grades! Call 337-2016. 12

★ For Sale

36 inch Gas Range with extra features. \$55 or best offer. Available August 15--ED 2-2669. 13

VOIGHTLANDER PROM with F-2, telephoto, and wide angle lens and electronic flash. Excellent buy. 485-6963. 15

Metal Bunk Beds (or two singles) complete \$35. 2 dressers \$10. Also Bicycle. Call 2-2048. t.f.

Typewriter Underwood Electric. Eleven inch carriage, 2 years old. Excellent Condition. \$125. ED 2-8225. 12

Twin size mattress, spring, frame--\$32; Drum set, \$165--includes bass, snare, high hat ride symbol, cases. ED 2-2116 or 1522 Walnut Heights, East Lansing. 12

Graduating end of July. Must Sell! 1957 Road King Motor scooter. Good condition. Phone 355-2892. 12

Coldspot Refrigerator, Kenmore Gas Range, and a Dehumidifier. All in perfect condition, hardly used. Call 332-3950. 13

Fresh vine-ripened tomatoes daily. Farm fresh eggs. Also will have red raspberries, sweet cherries. Other fruits and vegetables at reasonable prices. Roadside Farm Market. 2 miles east of E. Lansing on US 16 at Okemos Road. t.f.

Cushman Motor Scooter 2-Seater. Completely overhauled. . . . 3-Speed English Bike, basket. Both excellent condition. ED 2-2603, IV 9-1249. 13

1957 All-State Motorcycle 175 cc. Has buddy seat and windshield. Excellent condition. ED 7-0460. t.f.

★ Lost & Found

Lost: Purse in room 120 Physics-Math building Tuesday, July 17. Leave at Union desk for reward. 14

★ PEANUTS PERSONALS

There should be a law that legalizes murder for pinned girls who try to use people. Disgusted

Dear Syl, Thanks for Luke and Jake. They made a big hit in East Lansing. See you soon.

Dear R and D. Will be home a week from Friday with my tux. Say hello to Dick. Me

★ Personal

LET'S GO RIDING. Shady Trails Stable. Many acres of trails, also lessons. 1948 Lake Lansing Road. Phone FE 9-2693. 13

Young mothers wanted to demonstrate world's largest selection of \$1 toys. All supplies furnished. Tops in Toys IV 5-7824. 12

If Mary's husband had to shop for their toys he'd welcome TOPS IN TOYS select services. IV 5-7824. C12

We make everybody happy - Good rates for gooder drivers, other rates for the baders. Phone Bub-oiz, 332-8671. C12

Pups. Free. Six week old pointers. Good pets or hunters. Call 355-2382 during the day. 14

★ Personal

VACATIONERS!

Take along a first aid kit. Your money back if not used.

Marek Rexall

Prescription Center
301 N. Clippert (by Frandor) C

Top selections, Name brands. TOPS IN TOYS IV 5-7824 C 11

Woman's cashmere coat, mink collar, size 10, like new; other clothes, furniture. Leaving. FE 9-2447. 14

★ Real Estate

1951 4-bedroom, dining room, new Kitchen, recreation room, study, fenced yard. Near M.S.U. ED 2-6268. 11

Indian Hills--3 bedroom Cape Cod, 1 1/2 baths, large shady lot. Close to schools. ED 2-0267. 11

East Lansing, Large 6-year old house, 3-bedrooms, big study, recreation room, 2-full baths, screened porch, complete kitchen equipment built in, redwood paneled living room and dining room, 2-Fireplaces, wooded lot, near campus. \$24,900. ED 2-1785. 12

Leaving city must sell 3-bedroom ranch. 15 minutes from Campus. Large landscaped lot. 4 1/2% mortgage. Near schools and shopping centers. Will arrange terms to suit. Call owner TU 2-2785. 12

East Lansing, Large 6-year old house, 3 bedrooms, big study, recreation room, 2-full baths, screened porch, complete kitchen equipment built in, red-wood paneled living room and dining room, 2-Fireplaces, wooded lot, near campus. \$24,900. ED 2-1785. 12

For Sale or Rent with option to buy 1 1/2 story, Corner Hagadorn on Mt. Hope, Aluminum siding. Full basement, separate rental apartment. Acre lot. F. H. A. Approved. Phone ED 2-6153. 13

1951 4-bedroom, dining room, new kitchen, recreation room, study, fenced yard. Near M.S.U. ED 2-6268. t.f.

4 bedrooms and den. Near Williamston. 15 minutes drive from college. 45-foot recreation room, 28-foot living room, 16-foot kitchen, 9 closets. Corner lot with shade trees in paved subdivision. School bus at door. 3,790 square feet of living space for \$18,500 including carpeting and drapes. Phone owner OL 5-2763. 16

2 blocks to Okemos Elementary and Junior High School. 3 bedroom Capecod on shady landscaped 3/4 acre lot. 1 1/2 baths, dining room, full basement, screened porch. Call ED 2-0267, 19 625 Cornell Ave. Sharp 2-bedroom, fenced yard, close to campus. FH--by owner. \$11,900. ED 2-3191. 14

★ Service

Reliable Coed available for baby sitting, afternoons and evenings. Reasonable rates. Call 355-2053. 11

WE TRAVEL anywhere - any time. Quality catering for all occasions - to fit your budget. MICHIGAN CATERING SERVICE IV 9-3343. C

COLLEGE MANOR HAIR STYLING 10% STUDENT DISCOUNT. Expert in all Beauty Services. 224 Abbott. ED 2-3113. 13

WANT ADS !

★ Service

GAS FOR LESS
Plus Gold Bond Stamps
JAN'S SERVICE
Kalamazoo at Detroit Street. 12
House painting by 2 students.
Experienced. Reasonable rates.
Call ED 2-6336 or ED 7-7837. 14

ALTERATIONS. Hemming & restyling: formals, trousers, skirts, etc. **NEEDLE'N THREAD** Shop. 108 Division, behind Campus Drug Store. ED 2-5584. C

Tutoring. All Basics, Physics, Chemistry. Reasonable. ED 2-1385. 11

T.V. SERVICE. Special rate for college housing. Service calls, \$4. Absolute honesty. **ACME TV.**, 1610 Herbert. IV 9-5009. C

Application and Passport pictures now being taken at **HICKS STUDIO**, while you wait or one day service. ED 2-6169 for appointment. C

WE TRAVEL anywhere - any time. Quality catering for all occasions - to fit your budget. **Michigan Catering Service.** IV 9-3343. C

EXCELLENT T. V. REPAIR on all makes and models. All work guaranteed. **DISCOUNTS TO ALL COLLEGE HOUSING.** Open 8 A.M. to 8:30 P.M. T. V. Technicians, 3022 E. Michigan. Call IV 7-5558. C

Domestic and Imported yarns and patterns. 10% DISCOUNT on domestic yarns to MSU students. Alteration work on knit garments; regauging of patterns.

MARION'S YARN SHOP
3223 Mail Court
(Frondor)

Photography - copying and reproduction for Term papers and Theses of all kinds. Fast service, low rates, call NA 7-2448. 15

Snap Shot enlargements and duplications made at reasonable rates. Call Norm 489-6431. 15

Sewing Machine Service anytime, all makes. July, August Special - Clean, Oil, Adjust, \$3. MacLachlan's. TU 2-5976. 16

Reliable Coed available for baby sitting, afternoons and evenings. Reasonable rates. Call 355-2053. 14

TYPING SERVICE

EDIE STARR: Typist, thesis, dissertations, term papers, general typing. Experienced, IBM electric typewriter. OR 7-8232. C

Ann Brown, typist and multith offset printing (black & white, & color). IBM. General typing, term papers, thesis, dissertations. ED 2-8384. C

For Fast Accurate typing on elite IBM typewriter call 339-2139. C

THESIS PRINTED. Rapid service, quality Diazo prints, also blue printing. **CAPITAL CITY BLUE**, 221 S. Grand, Lansing. IV 2-5431. C

College papers typed on campus location. Fast, accurate, reasonable. 15 years experience. Dorothy Alden. 355-8182. 16

DIAPER SERVICE

SERVICE to your desire. You receive your own diapers back each time. With our service, you may include your baby's undershirts and clothing which will not fade. White, Blue or Pink diaper pails furnished.

AMERICAN LAUNDRY
111 E. WASHINGTON
IV 2-0864. C

Con-Con Education

(Continued from page 8)

last few years to the press, but there was no requirement for them to crack their doors even that much.

And on some occasions in the past, Big Three boards have told the legislature, in effect, where their money came from and how they spent it was none of the legislature's business.

Immediately after the preamble, the new education article says:

"The legislature shall maintain and support a system of free public elementary and secondary schools as defined by law. Every school district shall provide for the education of its

pupils without discrimination as to religion, creed, race, color or national origin."

The education committee said it inserted the latter sentence "in order that the new Constitution would leave no room for doubt" on the question of segregation.

Democratic delegates found no fault with six of the article's nine sections, but they would have kept the Superintendent of Public Instruction an elective office and given it a stronger hand by giving it "general supervision over all public education."

They would have reserved to the Board of Education authority to "serve as the general planning and co-ordinating body."

They also objected to the proviso that gubernatorial appointments to governing boards, other than the Big Three, be subject to Senate confirmation. They proposed that the Governor's appointments be with the consent of "the legislature."

It is proper to display any flag of the United States, regardless of the number of stars, if it is in reasonably good condition.

★ Service

Accurate typist: Term papers, thesis, manuscripts, etc. Phone ED 2-8064. 14

★ Transportation

Desire ride to Saugatuck or Holland Friday afternoon. Call John 332-5340. 11

Ride to California: Los Angeles or San Francisco. Call 355-1963; ask for Bobbie. 11

Riders Wanted from San Francisco to MSU around Sep. 1, via Seattle, Yellowstone, and Pacific Northwest. Write Gene Buckley, Box 324, Berkeley 1, California. 16

★ Wanted

Part-time Job--Electronic and model maker. Experienced. Call 355-1081 after 5:30 p.m. 12

Male Grad. Student desires to share house or apartment with fellow grad. student. 355-4206 after 6 or Box 778 Owen Hall. 13

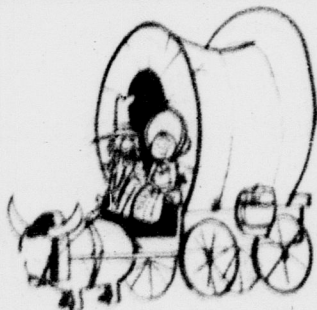
PART-TIME JOB -- Electronic Technician and model maker. Experienced. Call 355-1081 after 5:30 p.m. 13

Mature student looking for a small house (furnished) near campus. References on request. Call 355-8255 or write to Box 341 Student Services Bldg. Att: Fred. t.f.

Girl wants roommate from Aug. 1 to Sept. 1 in comfortable, inexpensive apartment one block from campus. \$32.50 / utilities. 12



Continental Imports
Lansing's
Volkswagen
Dealer
226 E. Kalamazoo
485-1743



Improve Your Transportation

Max Curtis, Inc.
LANSING & FORD CENTER

3003 E. MICHIGAN
IV 4-4491 EXT. 33

WHATEVER YOU NEED

for your car

Mufflers - Tail Pipes - Exhaust Pipes

INSTALLED

Complete Shop Service

Rebuilt Motors and Transmissions

INSTALLED

Speed Equipment - Accessories

DISCOUNTS TO STUDENTS AND FACULTY

KAMIN'S AUTO PARTS

526 N. LARCH

IV 4-4596

Mon. - Fri.
8 - 6

Saturday
8 - 5

Sunday
9 - 1

ARE YOU FROM STATE?

Let everyone know
you're from M.S.U.

with novelties,
souvenirs, and
sweatshirts from

CAMPUS
Book Store.

Sweatshirts-assorted
colors & styles

M.S.U. Mugs-large capacity

Steins-with pewter caps

Baby sun - suits-with

M.S.U. emblem - - -



All bearing the M.S.U. emblem you will be recognized as being "From State". Souvenirs, novelties, and sweatshirts make great gifts for little brothers & sisters ... and we wrap everything for mailing free.

East Lansing's Department Store for Students

CAMPUS BOOK STORE
(ACROSS FROM THE UNION BUILDING)

Will Your Advertising Message Reach This Student?

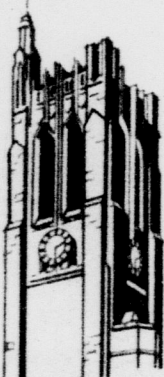


When People need something they cannot make themselves, where do they get it?...Your advertising message is the motion our readers are looking for and as an end result, an increase in your business. The Michigan State News is in the process of putting together its largest Welcome Week publication. This Edition will reach the 5,000 Families and Students of the 1962 Freshman Class and more than 25,000 Upper Classmen, Employees and Faculty & Staff members. Don't wait until it is too late.... Call the State News for Advertising assistance today...

OPEN "WELCOME WEEK" SECTIONS

SECTION F	SECTION D	SECTION B	SECTION G	SECTION A
SPORTS & CLOTHES	GREEK SYSTEM & CLOTHES	COLLEGES OF M.S.U. & CLOTHES	LANSING & E. LANSING AREA	NEWS & MISC.
AUGUST 2	AUGUST 8	AUGUST 15	AUGUST 21	AUGUST 27

**MICHIGAN
STATE
UNIVERSITY**



STATE NEWS

341 STUDENT SERVICES BLDG. PHONES: 355-8255 & 355-8256

New Edit Board For Uof M Daily

It appears that the controversy between the student editors of the Michigan Daily and the publications board has been resolved in favor of the students.

The dispute arose last spring term when the publications board attempted to dictate to the students who was qualified to be editorial editor of the paper and to switch around the recommendations of the senior student editors.

The editors rebelled and refused to accept the positions as offered by the Board.

After lengthy debate, the Board has appointed seven of eight student recommendations and changed only minor points, according to Fred Kramer, a mathematics major from New York City, who is summer co-editor and will take over as co-editorial page editor in the fall.

As a result of the dispute, a new publications Board head has been appointed. Luke Cooper, rider of the Law school has assumed the post and according to Kramer, this should improve relations between the board and the students.

"We feel the future is pretty safe," said Kramer. "A number of student members of the board, who were unsympathetic to the paper are graduating and one alumni member's term is ending."

"What we are attempting to do," said Kramer, "is to make it a Board in review rather than a Board in control as it has been in the past."

Kramer said he felt that the dispute had brought out the need for better communications between the student newspaper staff and the board and that efforts along this line were being successful.

IM News

The indoor swimming pool at Jenison is open to male students and faculty members every weekday afternoon from 3 p.m. to 6 p.m. at no charge, athletic officials said today.

A lifeguard is on duty for the recreational swimming.



LOOKING FOR A COOL SPOT?

VISIT THE

UNION

To PLAY

Billard Room Tables
Recovered in Gold...

To EAT

A Dinner In The Cafeteria ...
STUDENT SPECIAL \$1.15

PORK CUTLET
POTATO

VEGETABLE

ROLL & BUTTER

DESSERT

COFFEE, TEA OR MILK

Or A Snack In The Grill ...
Hamburger & Smalt 35¢

TO BROWSE IN COOL COMFORT VISIT THE
UNION BOOKSTORE

SHOP EARLY FOR
BETTER BUYS IN USED
FALL TERM BOOKS
AND AVOID THE RUSH. . . .

CASH FOR BOOKS ANYTIME

AT THE UNION BOOKSTORE

COOL Air Conditioned COMFORT
IV 5-6485

GLADMER THEATRE

HELD-OVER **THIRD SIDE SPLITTING WEEK**

65¢ to 5:30-90¢ After-Children 30¢
FEATURE STARTS AT 1:25-4:05-6:40-9:20 P.M.

PASSPORT TO GREAT FUN!

Fred MacMurray
"Absent Minded Professor"

Jane Wyman
"Pollyanna"

Tommy Kirk
"Old Yeller"

Kevin Corcoran
"Shaggy Dog"

THEY'RE ALL TOGETHER FOR THE FIRST TIME!

DISNEY DOES IT AGAIN!
THERE'S REAL FUN FOR THE KIDS... FOR THE TEENERS... For MOM & DAD Too!
ONLY WALT DISNEY COULD BRING TOGETHER THE STARS OF "THE ABSENT MINDED PROFESSOR," "OLD YELLER," "THE SHAGGY DOG" AND "POLLYANNA" IN THE MOST FUN-FILLED ACTION-PACKED DISNEY OF THEM ALL!

Walt Disney

BON VOYAGE!

FRED MACMURRAY • JANE WYMAN
MICHAEL CALLAN • DEBORAH WALLEY
JESSIE ROYCE LANDIS • TOMMY KIRK • KEVIN CORCORAN

Starting Saturday, AUG. 4th.
JAMES STEWART-MAUREEN O'HARA
PAHAN in

"MR. HOBBS TAKES A VACATION"

"Don't Be Mistaken, As Always . . . The Michigan, Gladmer and Campus Theaters Lead the Way to the Finest Motion Picture Entertainment in Michigan. Watch for These: "Boy's Night Out" -- "Music Man" -- "Mr. Hobbs Takes A Vacation" -- "Interns" -- "Spiral Road" -- "Hawaii" -- "Birdman of Alcatraz" -- "Lolita".

Will Your Advertising Message Reach This Student?



When People need something they cannot make themselves, where do they get it?...Your advertising message is the mation our readers are looking for and as an end result, an increase in your business. The Michigan State News is in the process of putting together its largest Welcome Week

publication. This Edition will reach the 5,000 Families and Students of the 1962 Freshman Class and more than 25,000 Upper Classmen, Employees and Faculty & Staff members. Don't wait until it is too late.... Call the State News for Advertising assistance today...

OPEN "WELCOME WEEK" SECTIONS

SECTION F	SECTION D	SECTION B	SECTION G	SECTION A
SPORTS & CLOTHES	GREEK SYSTEM & CLOTHES	COLLEGES OF M.S.U. & CLOTHES	LANSING & E. LANSING AREA	NEWS & MISC.
AUGUST 2	AUGUST 8	AUGUST 15	AUGUST 21	AUGUST 27

**MICHIGAN
STATE
UNIVERSITY**



STATE NEWS

341 STUDENT SERVICES BLDG. PHONES: 355-8255 & 355-8256