



## 100 Come To Fifth Gym Clinic

Gymnastic performers and coaches from Michigan, 16 other states and Canada will converge on the Michigan State campus Sunday through Friday for the 5th Annual National Summer Gymnastics Clinic.

More than 100 young people already are registered for the clinic which will see the nation's top coaches and active gymnastic athletes presenting up-to-date teaching and coaching techniques and methods.

One of the clinic's major objectives will be to stress gymnastics instruction on elementary and secondary school level, in keeping with President Kennedy's emphasis on physical fitness improvement.

Directing the clinic will be George Szypula, Michigan State's gymnastic coach, who will handle a teaching assignment himself.

Highlighting the clinic week will be two special events offered to the general public.

The first is an Olympic development meet, set for Monday at 1:30 p.m. at Jenison Gymnasium, open to the public without charge. It is designed for training officials, with young performers competing and later getting critiques on their performances.

The second is a "Night of Stars" show, scheduled for (Continued on page 9)



DOOR-TO-DOOR CAMPAIGNER--Gubernatorial candidate George Romney chats with Mr. and Mrs. Ramon Roussin during his walking tour of University Village Monday.

--State News Photo.

## Romney Promises Active Campaign

By SUSAN JACOBY  
of the State News Staff

George Romney, Republican gubernatorial candidate, promised an active campaign to revive Michigan's business picture during his campaign tour through Michigan State and the Lansing area Monday.

Romney, who faces Democratic Governor John Swainson in the Nov. 6 election, stopped at Williamston, Mason, Lansing and East Lansing in his whirlwind tour which included a visit to University Village.

The 55-year-old candidate, who is former head of American Motors, said the key to reviving the state's business picture "is to free the state from domination by special interest groups."

Romney said he would use his experience gained as president of American Motors in leading the state out of economic chaos.

Romney sighted several similarities between his problems as president of American Motors and those to be faced by Michigan's governor.

Weighted by a huge debt, American Motors was generally considered a dying corporation before Romney became president. The company's return to a frontal position in American auto manufacturing is largely credited to Romney.

"Along with several other executives, I was able to straighten out American Motors' financial tangle and improve the company's public image. A big part of the job consisted of obtaining cooperation from people of diverse backgrounds and ideas."

Romney said he plans to attract new industry through a program of complete fiscal reform. He does not favor a state income tax independent of complete financial reform.

"I would never advise a state tax just to meet a deficit," he said. "Such a policy would utterly ignore the underlying causes of deficits. Any changes in revenue must be accompanied by changes in spending."

He feels that untangling Michigan's "financial mess" is basic to attracting new industry.

"It's obvious that businesses don't want to locate where they must pay extremely high taxes," he emphasized. "Furthermore, our constant legislative squabbling and nationally aired difficulties have tarnished Michigan's image to the extent of discouraging new industry."

"Michigan's leaders have been hostile to business for the last 14 years. Both business and labor must feel confident that the government treats all groups fairly."

"Speaking from a lifetime of practical experience, I know the Michigan legislature can be drawn together. The legislature needs constructive leadership, one which doesn't create antagonism. People said Con-Con would never work, yet we produced one of the finest state constitutions in the country."

Romney, who served as Con-Con vice-president and organized Citizens for Michigan, the group which sparked a demand for constitutional reform, stands squarely behind the new state constitution.

Swainson opposes ratification of the document.

The GOP candidate spoke of university-level research as another key to economic growth for Michigan.

"There is too little correlation between research and economic activity," he said. "We're producing electronics and engines" (Continued on page 7)

## Spartans Top Nation In Playboy Picks

By JIM WALLINGTON  
State News Managing Editor

Playboy magazine, in its September issue, has tabbed the Michigan State football team as the probable No. 1 football team in the nation this fall.

The publication also named MSU Head Coach Duffy Daugherty as the coach of the year and named two Spartan players--Captain George Salmes and center Dave Behrman--as likely All-Americans.

The magazine's football writer, Anson Mount, wrote that Daugherty has the finest first string in the country, but if any key man, such as Salmes or Behrman were injured, the squad would be crippled "since the quality...drops off sharply after the first 11 players."

"If Duff's chargers can stay healthy, they'll wreak desolation across the Midwest," Mount said.

He predicted Michigan State would win the national title with an 8-1 record, but did not guess which team would beat the Spartans. Daugherty chuckled at Playboy's prediction.

"It's a humor magazine isn't it," he said. "You have to take their prediction with a grain of salt. None of the sports maga-

zines and organizations who are used to making predictions are picking us up there."

"It's nice some of our individuals get some honors, but we don't have enough depth to escape or recover from injuries."

Following the Spartans in the magazine's top 20 are, in order, Mississippi, Duke, Iowa, Texas, Ohio State, Navy, Alabama, Washington, LSU, Purdue, TCU, Oregon, Northwestern, Maryland, Penn State, Florida, Tennessee, Missouri and Texas A&M.

Two Michigan State inter-sec- (Continued on page 9)



DUFFY DAUGHERTY

## Duffy Invites 70

Michigan State will pin its 1962 gridiron hopes on a squad of 70 men invited by Head Coach Duffy Daugherty to return for early fall drills starting Sept. 1.

Among them are 24 letter-winners, including eight seniors who previously have won two letters each. These eight--end Ernie Clark, tackles Jim Bobbitt, Ed Budde and Jim Kanicki, guard George Azar, center-tackle Dave Behrman, wingback Lonnie Sanders and fullback

George Salmes--also are the "blue chip" veterans around whom the club will be built.

Behrman, at 6-4 and 253 the biggest regular in Spartan gridiron history, won All-American honors last year, and he and Capt. Salmes made the All-Big Ten.

This small but sound hard core of experience is more than over-balanced by the presence of 28 sophomores. On the squad also are 24 juniors and 18 seniors.

## Yates Accepts Fulbright Grant

Donald A. Yates, assistant professor of foreign languages, has received a Fulbright grant from the U.S. Department of State to do research in Argentina for a year.

Yates will be investigating Argentine imaginative literature.

A member of the MSU staff since 1957, Yates is the author of numerous articles and book and movie reviews published in several popular and scholarly magazines.

He is also co-editor of "Labyrinths," a collection of writings of Jorge Luis Borges, and associate editor of "Tales for a Rainy Night."

## Weather Cool, Empty Pool

Lansing-area swimming pools and sun decks are noticeably empty this week due to temperatures averaging seven degrees below normal.

Harold Julian of the Capital City Weather Bureau says the average August temperature is 72 degrees. Temperatures during the early part of this week averaged around 65 degrees.

"Cold air masses usually sweep through the northeastern United States from Canada," Julian explained. "But this summer prevailing winds from the northwest are bringing cold air masses into the Dakotas. These sweep over the entire eastern half of the United States--including Michigan."

Julian said temperatures would rise toward a more normal level today. However, they have averaged three degrees below normal throughout the summer.

"People should remember that unusual weather is the rule. It is an unusual event when weather is 'normal,'" Julian commented.





## How Is It Spelled--

## Arigiculture?

The Union is a noted campus stopping place for visitors to campus.

Prominently displayed in the first floor hall are the names of those students who have achieved a 3.5 average or higher during spring term.

It is an honor for the students who have their names on the board. Many persons passing through the union stop to look over the list which is arranged alphabetically by colleges.

The honor and the MSU academic image are somewhat tarnished this summer, however.

The person who put up the college titles spelled the first one on the list--ARIGRICULTURE.

Someone ought to change it.

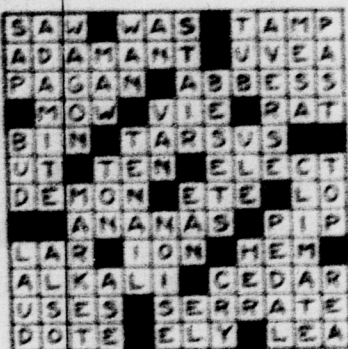
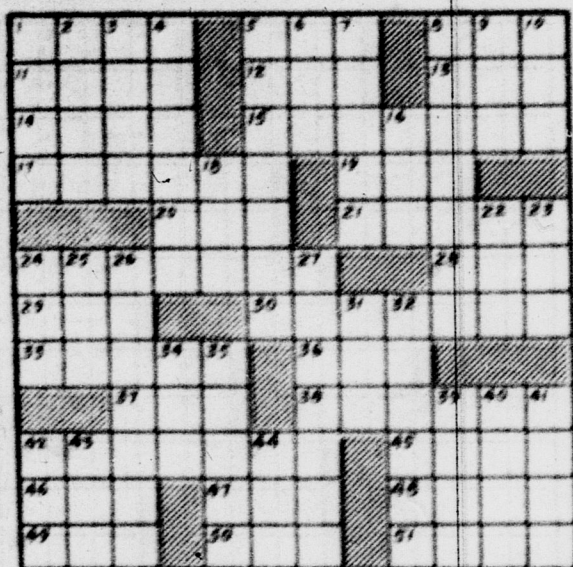
## Crossword Puzzle

## ACROSS

1. After
5. Make lace
8. Drink little by little
11. Butter substitute
12. Moslem official
13. Medieval shield
14. Scraped linen
15. Recoup
17. Those defeated
19. Wrath
20. Mc Fr.
21. Pile fabric with upout loops
24. Believed in
28. Affirmative vote

## DOWN

29. Anoint
30. Uneven folds
23. Course traveled
26. Woman's nickname
31. Member of a Persian tribe
28. Went ashore
42. Goa powder
45. Atr. antelope
46. Refuse wool
47. E. Indian weight
48. Tennysonian character
49. Sheep
50. Tip
51. Resort city
1. Take a vote



## TUESDAY'S SOLUTION

2. Potpourri
3. Jap. coins
4. Indian poles
5. E. Indies atreial animal
6. Span of years
7. Unspoken
8. Diverse
9. Dessert
10. Contented murmurs
11. Seaweed
12. Bush
13. Cereal grass
14. Affirmative
15. Jutting rock
16. River, Sp.
17. Howl
18. Shaped person
19. Extinct N. Zealand bird
20. Football kicker
21. Auroch
22. Irregularly notched edge
23. Completed
24. Ireland
25. Pedestal part
26. Ind.
27. Disturbance
28. Fruit of horse-tail

MICHIGAN STATE UNIVERSITY

## STATE NEWS

ALL-AMERICAN ACPA Rating

Member Associated Press, United Press International, Inland Daily Press Association, Associated Collegiate Press Association, Michigan Press Association.

Published by the students of Michigan State University. Issued on class days Monday through Friday during the fall, winter and spring quarters; twice weekly during the summer term; special Welcome Issue in September.

Second class postage paid at East Lansing, Michigan.

Editorial and business offices at 341 Student Services Building, Michigan State University, East Lansing, Michigan. Mail subscriptions payable in advance: 1 term, \$3; 2 terms, \$4; 3 terms, \$5; full year, \$6.

Editor, Ben Burns  
Managing Editor, James Wallington  
Photo Editor, Dave Jackson  
Advertising Manager, Fred Levine  
Circulation Manager, Henry Tinkham

## Romney Visits With Spartans

George Romney, Republican nominee for governor, conducted a door-to-door campaign in MSU's University Village Monday afternoon. The candidate's surprise appearance at apartments in the married housing development produced a variety of reactions.

Mrs. Janet Brooks, 1211 University Village, said:

"I was quite thrilled to think he'd actually take the time to come around himself. I visited Con-Con and watched Mr. Romney in action in connection with my political science courses. I never thought he'd find time to actually stop in people's homes."

"A visit like Romney's probably means a lot to voters," Mr. George Zimmer of 1201 University Village said. "It shows he has time; however, I don't think the questionnaires he distributed will get much of a reaction. Most of them will probably be thrown out."

Al Bivens, who graduated from MSU in June, was painting doors when Romney appeared.

"I was never so surprised in my life," he recalled. "After all, it's not every day that a candidate for governor pops up while you're working. Seriously, I think it's a good thing for a candidate to go to the people like that."

MSU senior Gary Burns, another painter, said:

"I don't know of any other candidate who took the time to come around personally. No one even came here during the primary campaign, and it must be harder to do it on a state-wide basis."

Mrs. Carmen Labarca of 1201 University Village is a native of Chile. She has lived in the United States about one year. She said:

"I don't understand too much English, but I know Mr. Romney is a candidate for governor. I think this is very good, that a candidate should come and talk to the people. I have not seen this before. In my country, such a thing would never happen."

## Fluoride Not Really 'New'

By BOB ROSS

## State News Science Editor

In 1908, Frederick McKay, a Denver dentist, became interested in brownish blemishes, or mottling, on teeth. He undertook a check of 5,000 persons in 10 states and two foreign countries.

His first report concluded that there was "something" in the drinking water of certain towns that caused differences in tooth enamel. But he also noted that persons with mottled teeth had fewer cavities.

By 1931 he had finally traced mottling and lack of decay to the natural amounts of fluorine in the water supply.

Over the last three decades it has been established beyond question that when the intake of fluoride is one milligram a day, trace amounts of fluoride are taken up in the enamel of the teeth of infants and children before the hardening of the enamel is complete and especially before the permanent teeth have erupted.

It is this process that inhibits cavities.

But for many years since dental fluorosis (mottled enamel), caused by an excessive intake of fluorides in drinking water, has been a serious public health problem in many areas in the United States.

The fact is that almost all foods contain traces of fluorine, but most of these contribute a negligible quantity to the daily intake of this element.

The American Dental Association reports that studies of human beings and laboratory animals do not give any reason to believe that the consumption of fluoride-bearing foods will produce ill effects on health.

The average consumption of drinking water by adults in a temperate climate is about 1,200 to 1,600 c.c. daily, the association says.

If the water contains 1.0 ppm of fluorine, there would be an intake of approximately 1.2 to 1.6 mg. of fluorine each day.

The safe level of fluorine in water for human consumption is 1.0 ppm.

The intake of fluoride results in a pronounced increase in the fluoride content of enamel, dentin and bone, the group reports.

For those people who may be unduly apprehensive about the hazards of adding fluoride to drinking, the ADA says that it should be pointed out that fluoridation does not add anything new to the water. People in many parts of this country, and the world, have naturally fluoridated water.

When a city selects a fluoride compound, consideration should

be given to the availability of fluorine in different compounds, cost and relative physiologic effects.

There are four chief sources from which to draw:

Sodium fluoride was the earliest source used by cities because it was commercially available in large quantities, was convenient to use and had a solubility which was relatively high and constant over a wide range of temperatures.

A salt, calcium fluoride, is the cheapest source, but because of its insolubility it would be difficult to feed. Some large cities, however, have found it convenient where the possibility has existed of feeding fluoride directly to the water.

Hydrofluoric acid is the third source. This is the more expensive method but can be used to direct feed since acid is already in liquid form.

The acid is corrosive, however, and the danger inherent in its handling prohibits its use in any but the most well-supervised plants.

Balancing cost against convenience in handling, sodium silicofluoride might be the most promising source of fluoride at present.

Radio, Wis., for example, has been able to purchase it at 3.23¢ per pound delivered, which makes it about one-fifth as expensive as the fluoride obtained from

sodium fluoride.

Mechanical equipment for feeding fluorides into the water systems has been adapted from machines originally designed for adding other chemicals to water, the ADA says.

The choice of a feeder depends on the rate at which fluoride is required. This rate, in turn, is determined by the extent of water consumption and on the amount of fluoride present in the untreated water.

As a general rule, solution feeders are used for small water systems and dry feeders for large ones.

A recent development has been the production of a saturator. In this device the water passes through a bed of crystalline sodium fluoride so that a saturated solution of fluoride can be withdrawn by the feeder.

The cost of solution feeders is about \$250 without auxiliary equipment.

Two types of dry feeders are suitable for fluoridation. Volumetric feeders deliver a measured amount of dry chemical within a certain time period. Price: \$400.

Gravimetric feeders deliver a measured weight of chemical in a given interval of time. These are especially adapted to large water supplies and are capable of feeding fluoride for the largest

(Continued on page 13)

## You're Smart

When you shop at Kramer Auto Parts. They give THE

LARGEST DISCOUNTS IN TOWN

- COMPLETE LINE OF AUTOMOBILE PARTS
- AUTOMOTIVE MACHINE SHOP
- COMPLETE AUTO SPRING SHOP
- AUTOMOTIVE MAINLINE SHOP
- MUFFLERS AND TAILPIPER

KRAMER

AUTO PARTS

800 E. KALAMAZOO

IV-41335



# Michigan Air Guard Active

By CLEMENS LEWICKI  
of the State News Staff

You do not have to enlist in the Air Force, Navy, or Marines to become a jet pilot.

"Qualified Michigan State University graduates," Brig. Gen. John A. Johnston, Michigan ANG Assistant Adjutant General, said, "can get jet aircraft pilot training through the Air National Guard."

"After meeting the qualifica-

## Deskins in Europe Math Seminar

W. Eugene Deskins, associate professor of mathematics, has been participating in a mathematics seminar at Gothe University, Frankfurt, Germany. While there he spoke on group theory.

This week and next he is attending the International Congress of Mathematics in Stockholm, Sweden. Dr. Joseph E. Adney, associate professor of mathematics, is also attending this meeting.

Deskins will remain in Europe on sabbatical leave for the 1962-63 school year for study at Tubingen University, Tubingen, Germany.

tions, the prospective pilot will be sent first to an Officers Candidate School and upon successful completion will be commissioned a 2nd Lt. in the Air National Guard. He will then be sent to an Air Force flying school for pilot training. After receiving his wings, the new pilot will be assigned to a Michigan ANG squadron."

Johnston said that Michigan has the 107th and 171st Tactical Reconnaissance (Tac Recon) Squadrons equipped with RF84F aircraft and the 177th Tac Recon Squadron equipped with RB57A aircraft.

The RF84Fs, Johnston explained, are single seater photo reconnaissance jet fighters stationed at Detroit Metropolitan Airport while the RB57As are photo reconnaissance jet bombers stationed at Kellogg Field at Battle Creek. These Squadrons are units of the 127th Tac Recon Wing.

"To stay proficient in jet aircraft and fulfill the minimum flying requirements," Johnston said, "it is necessary for the Guard pilots to fly at least twice a week."

He said that the pilots come from all professions and a good

number of them are corporation presidents, executives, or own their businesses.

Since photo reconnaissance is the primary mission, the aircrews perform practice photo missions over American cities at regular intervals.

Besides the practice missions, the Guard aircraft participate in Air Defense Command training exercises with regular Air Force units.

Johnston pointed out that a Michigan ANG team participated

in the recent atomic tests over Johnston Island in the Pacific.

"The 172nd Tac Recon Wing is not only made up of jet squadrons," Johnston said, "it also includes air base supply, food service, and medical units."

In July, the squadrons are activated for a 15 day field training period and operate out of Phelps Collins ANG Base at Alpena. During this period the Wing operates as a regular combat unit giving aircrew and ground personnel the opportunity to keep

proficient.

He said that the enlisted airmen of the Guard who are not hired as civilian maintenance personnel on the aircraft meet one week-end each month for training at the Guard air fields.

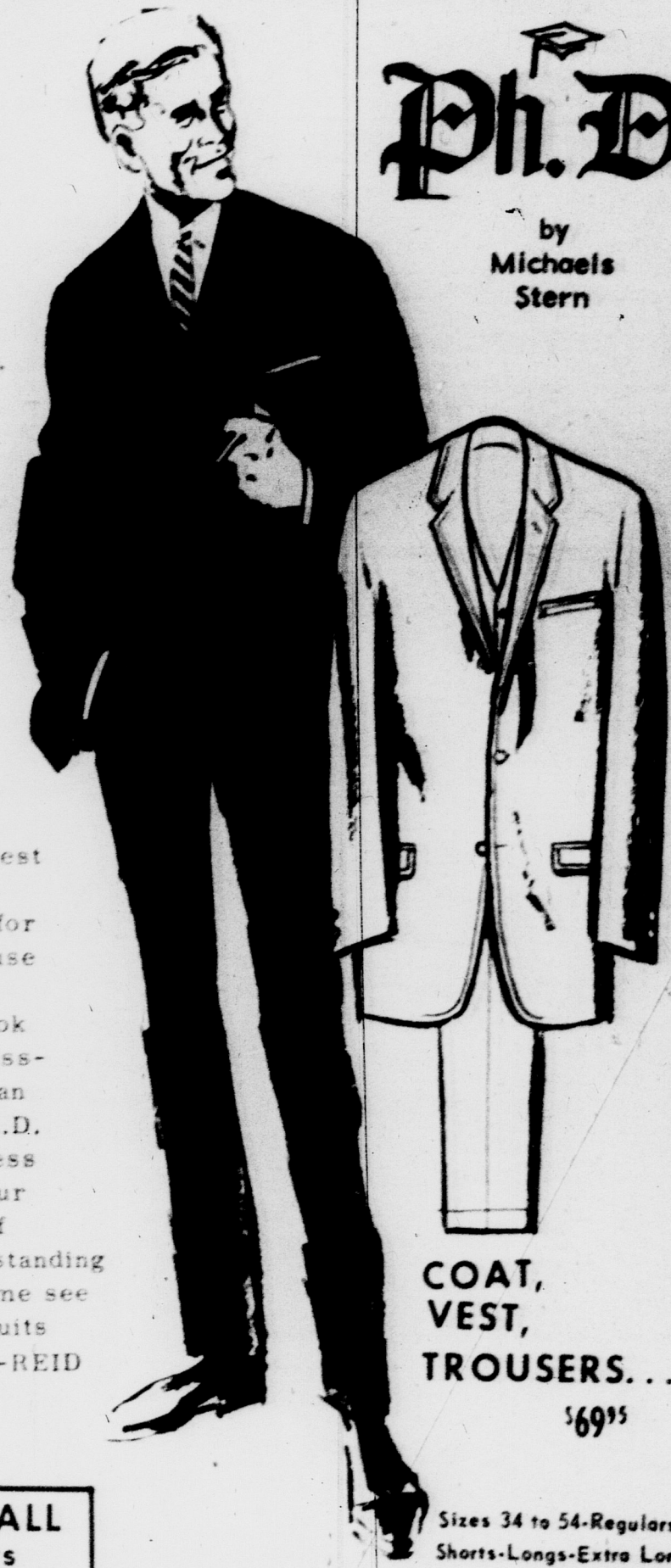
"A prior service airman will receive an immediate assignment in a Guard unit while a new airman," Johnston said, "receives his basic training at Lackland Air Force Base, Tex., like a regular Air Force enlistee."

OPEN 9 a. m. to 9 p. m., Monday Thru Friday . . . Saturday Till 6 p. m.

Big Choice of Famous Brands - Jantzen  
McGregor - Arrow - Ivy Bowl - Stetson and others.

Ph.D.

by  
Michaels  
Stern



Ph.D. Suits give you a vested interest in the suit with a vest for fall---because this is the authentic look of the successful young man of today. Ph.D. spells success for you in our collection of several outstanding fabrics. Come see these new suits at HOLDEN-REID

COAT,  
VEST,  
TROUSERS...

\$69.95

NEW FALL

- Sweaters
- Shirts
- Sportswear

- Suits & Topcoats \$59.95 to \$175.00
- Sport Coats \$29.95 to \$95.00
- Slacks \$5.98 to \$40.00

HOLDEN REID

FRANDOR SHOPPING CENTER and ST. JOHNS  
"FAMOUS BRANDS FOR LAD & DAD"

Thurs. Fri. Sat. SENSATIONAL SAVINGS

Kresge's  
for family savings

BIG BUY

Regular 25c children Fun Time Books



Choose from a tremendous selection of colorful illustrated Story Books, Paint or Color Books and Activity Books.

3 for  
43c



19c

16's

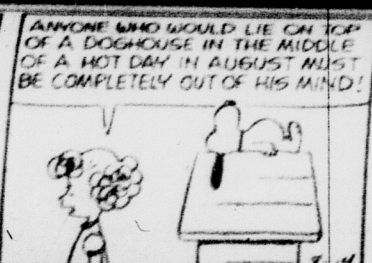
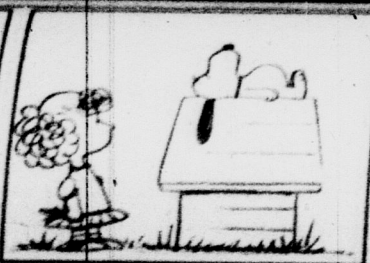
Box of '48'

62c

135 East Grand River

S. S. KRESGE COMPANY





## Road, Station, Store

If a new road is built, what are the chances that it will be the size of a new gas station within six months?

If there are three supermarkets within a four-block area, what are the chances that there is also a department store there?

Geographers, who used to be mainly describers of the present, are finding that research on such questions is helping them to become, more and more, predictors of the future, reports an MSU geographer.

By thoroughly studying the important factors involved, geogra-

to predict the likely growth of an area, notes Arthur Getis.

It is not a simple job. There are many complexities--population growth, highway plans, location of industries, availability of materials, land values and political dealings--to name only a few.

"There are so many variables that not all can be taken into account," Getis points out. "Even the personalities of entrepreneurs can be variable. What we try to do is consider the most important factors."

"Fortunately, there have been

many new developments in statistical techniques and scientific methods in the past few years. That is why we have been able to do more in the way of making predictions. Also, we have electronic computers to help us."

Once the variables have been selected, the geographer can call on some well established patterns and chains of sequence in making predictions.

### Women's Store

#### Moves to City

Marie's, a fashion establishment in Lansing since 1950, has moved into a new store at the corner of MAC and Albert, East Lansing.

The women's apparel shop opened Wednesday. Mrs. Marie O. Smith, owner, said:

"In addition to clothes for high school and college girls, we also have styles for career girls and the more mature woman."

Marie's is open 9:30 a.m. to 5:30 p.m. each weekday excluding Wednesday. The store is open from 12 noon to 9 p.m.

## TOP HITS

In Stock  
**DISC SHOP**

OREN EVENINGS

### Coral Gables'

## ILFORNO

The Name that Made Pizza Famous in Lansing

**NOW OPEN AT 11:00 A.M.**

Serving Snacks - Sandwiches - Luncheons - Dinners

Also Catering to

Private Parties - Banquets - Meetings

**Visit Our Rathskeller**

Open 5 p.m. Daily

Phone ED 7-1311

Complete Take-Out Service

### CONFERENCE OR CLUB MEETING SOON?

**POPLARS MOTEL** has the complete conference facilities you are looking for...air-conditioning, spacious function rooms...a beautiful pool for your relaxation after the meeting.

Phone ED 7-1621 for Reservations



US-16-JUST EAST OF EAST LANSING



#### TURNABOUT STRIPES

A fresh, new look in cardigans--the vigorous contrast of broad and narrow stripes in alternate panels. Deliberately casual...and oh, so smooth. The styling is young and alert--with the new, narrower border, side vents and ribbed cuffs and bottom. Warm. 100% Australian Wool Zephyr, in a textured knit...and in wonderful colors. \$19.95

THE ANZAC BY  
**LORD JEFF**

H. Kositchek Bros.

Smooth sailing  
by

*Lofties*

A sweater designed in rich fur blend comes in double color banners with bright sailboat

Intarsia design. Sizes 36 to 40, \$10.98

Matched precisely with a smooth wool flannel

skirt tailored with handstitched arrow-darts.

Sizes 10 to 20, \$10.98.



M.A.C. At Albert  
332-3505



## 5 IFYE Students Arrive In Michigan

Five international farm youth ambassadors arrived in Michigan last week and immediately set out to meet families who will host them for the next several weeks.

The International Farm Youth Exchange delegates or "IFYE's" as they are called, will have a two-month stay in Michigan. All will return to their homelands in late November.

"The IFYE program, sponsored by the nation's 4-H clubs, seeks to improve international understanding through personal contact," points out Mary Woodward, assistant state 4-H Club leader.

About 2,750 young people have travelled to or from America under IFYE sponsorship in the past 15 years. Nearly 20,000 families have been hosts. A total of 62 Michigan youths have gone to roughly 40 countries, while 123 delegates from nearly 50 nations have come here.

Te-chung Huang of Taiwan (Formosa) will stay with families in Newaygo, Ingham and Lenawee counties. A local 4-H leader at home, he has spent all his life on a 15-acre farm which grows sugar cane, rice, peanuts and cotton. Water buffalo provide the power.

### Ryan Moved

Ed "Rocky" Ryan, captain of the 1961 MSU football team, reported to the Ottawa Rough Riders last week after his purchase from the Toronto Argonauts of the Canadian Football League. The 5-10, 196-pound linebacker was picked up by the Canadian team for the \$350 waiver price.

Ramraghunath Chowdhary of India will visit Alpena, Lapeer and two other counties. A cattle breeder, he lives on a 150-acre irrigated farm.

Asghar Bahrami Salmasi of Iran went to Calhoun County. A community development worker in an Iranian village, Asghar will later visit Van Buren, Tuscola and Branch counties.

Richard Bailey of Venezuela will be in Hillsdale, Kent and Lenawee counties. He hails from

a 5,000-acre ranch which raises Brahms cattle.

From Spain, Jaime Vinals is visiting Missaukee and Muskegon counties. He lives on a 5,000-acre crop and livestock farm near Barcelona.

All five will interrupt their farm visits to attend the 47th annual State 4-H Show at Michigan State University, August 27-30. Here they will join four other IFYE's who came to Michigan earlier this summer.

## Legs Sore? Tired of Walking?

See us for the finest and best buys in English Bicycles



### GENUINE HERCULES ENGLISH 3-SPEED BICYCLES

regular \$60.00 now **ONLY \$47.77**

Other English Models From \$41.88

SIDE BASKETS...HORNS...LOCKS

### Gene's Cycle Shop

"English Bicycle Headquarters"

702 W. Barnes

IV 4-0326

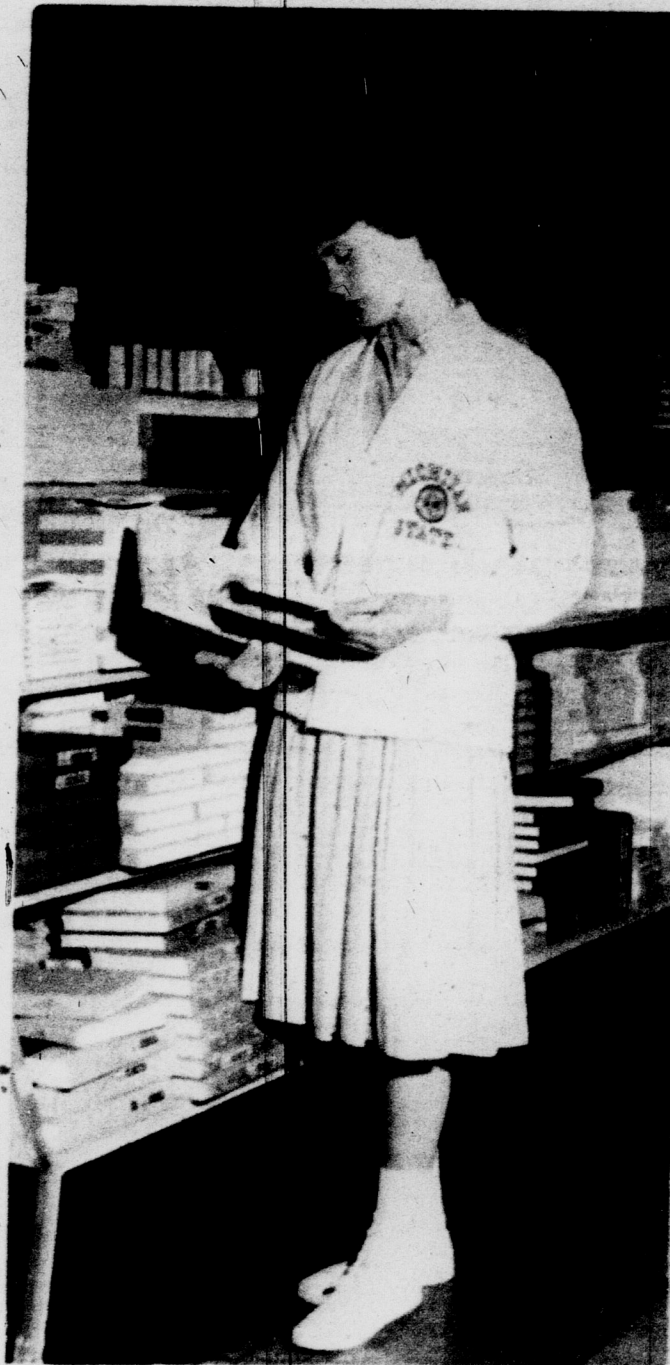
Lansing



## Get Off To A Fast Start... at the UNION BOOKSTORE

(In The Union Building)

we are fully stocked and ready to serve you... Stop in today and pick up those required texts for your fall term basic courses (N.S., A.T.L., Soc. etc)



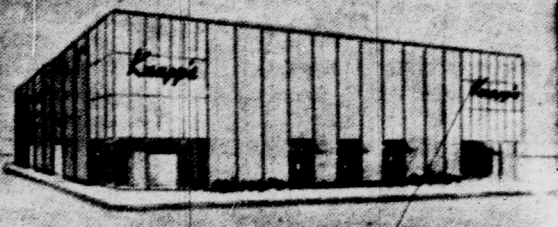
Sandy Brower, Okemos

Freshman to-be sets the Fashion pace in a new Cardigan Style M.S.U. Sweatshirt.

Stop in and Browse Through M.S.U.'s SWEATSHIRT CENTER  
• Ten Delicious Colors  
• Seven Popular Styles  
Plus a New

"Paint-it-YOURSELF" Spartan Shirt

Knapp's



## DOUBLE COTTON KNIT COSTUMES

unbelievably priced!

17<sup>95</sup>

Here's the costume that's so right for so many different occasions, the double cotton knit. Left; grey-red combination or walnut-camel combination in sizes 12 to 20. Right; grey-camel combination or green-light green combination, sizes 12 to 20.

KNAPP'S EAST LANSING STREET LEVEL







**POLICE RECRUIT CLASS**--University police rookies Arnold Wiles, glasses, Paul Gilligan, center, and Redford Jones get lessons in the use of resuscitator from E. Lansing Fire Department's Sergeant John Cain, right, and Officer Charles Ehrke of the Department of Public Safety. The recruits are

undergoing a six week training program before they go into uniform. They will then spend an additional six weeks working with other officers before being put on a regular status. --State News Photo.

2 TELEPHONE  
MOVIE SCHEDULE  
Times 1-5:00  
OFFICE TO 5-0000

**LANSING**  
DRIVE IN THEATRE  
KIDNERS UNDER 12 IN CARS FREE!  
SHOW AT 8:00

GIANT W-4-D-E SCREEN  
BLACKTOP DRIVES  
PLAYGROUND

Tonite Thru Sat.

ADM. 90c Gates Open 7:15

EXCLUSIVE  
FIRST  
SHOWING!

FILMED IN MICH.

At Jackson and Oakland County **DON'T MISS THIS ONE!**

A STORY SO BOLD... IT WILL AFFECT EVERY PARENT AND  
TEENAGER IN THE ENTIRE WORLD... BECAUSE IT'S REAL!

BEHIND THE WALLS  
OF THE WORLD'S  
LARGEST  
PRISON!

starting The Youngest Actress Ever To Be  
Nominated For The Academy Award  
**Miss PATTY McCORMACK**  
and introducing **RICHARD MEADE**

# Jacktown

with  
**RUSS PAQUETTE**  
**DOUGLASS**  
**RUTHERFORD**

SCENE OF THE RECENT PRISON RIOTS THAT MADE WORLD HEADLINES  
and Michigan's Oakland  
County Prosecutor  
**GEORGE F. TAYLOR**

Written, Produced and Directed by **WILLIAM MARTIN**  
A PICTORIAL INTERNATIONAL PRODUCTIONS INC.

Hit No (2) Shown Once At 9:45

Fri-Sat Late Show



TOWERS OVER THE WORLD OF  
SPECTACLE LIKE A COLOSSUS!

**MIGHTY  
URSAUS**

Photographed in EASTMANCOLOR Released by UNITED ARTISTS

**ELVIS PRESLEY** SINGS 4  
NEW SONGS!  
**FLAMING STAR**

Exclusive Showing  
Doris Day in

'That Touch of Mink'

With Carey Grant

## the **PIT** Restaurant

Serving complete meals and  
featuring pizza in a relaxing  
South Sea Island atmosphere.

**Club # 1**

Chicken, bacon, tomato,  
mayonnaise on toast.

Served with an order  
of french fries.

Delivery on Party Orders

Air Conditioned

203 MAC

ED 2-0863

**STARLITE**  
FOLLOW W ST JOE

Two Miles Southwest of Lansing on M-78

**Starts FRI. (7) BIG DAYS.**

IT'S  
FAMILY  
FUN-TIME



-AT  
THE  
MOVIES!

**JERRY LEWIS**

IN HIS BIGGEST LAFF-A-THON!

The Most Famous Goof-Up  
Who Ever Went To War...

with the Army!

as  
**THE  
SAD  
SACK**

WALLIS  
production  
DAVID  
WAYNE



He's a Teenage Terror  
Who Scares  
Nobody But Himself...

as  
**THE  
DELICATE  
DELINQUENT**



starring **DARREN MCGAVIN** **MARTHA HYER**  
with **ROBERT IVERS** **HORACE MCMANON**  
written and directed by  
**JERRY LEWIS** **DAVID MCGAVIN**

Fri - Sat Late Guest Feature At 11:58

**FRANK SINATRA**  
**DEAN MARTIN**  
**SAMMY DAVIS, JR.**  
**PETER LAWFORD**  
**ANGIE DICKINSON**



**OCEANS 11**

TECHNICOLOR  
RICHARD CONTE - CESAR ROMERO - PATRICE WYMORE



## Working On the Highway

WASHINGTON (AP)—Some 20,000 students this summer found highways the road to a college education.

This estimate comes from the Better Highways Information Foundation, a nonprofit organization supported by contractors and the automotive industry to supply information on highways and their effect on the nation's economy.

In working for state highway departments, the youngsters carried transit compasses, pounded stakes, cleared brush, drove trucks, conducted surveys of road usage, cooked and even designed bridges and roads.

In Connecticut, 54 worked as temporary toll collectors. In remote sections of Alaska, the student workers went about carrying 12-gauge shotguns loaded with bear slugs for protection against bears and cow moose with young calves.

Three students spent most of the summer on Prince of Wales

Island, 60 water miles from Ketchikan, receiving supplies twice a week by float plane. Montana assigned nine college students to public relations work with motorists. They dressed in hard hats and fluorescent vests and at points where traffic was

delayed by construction, they went down the line of cars explaining the delay, answering questions about the state and handing out pamphlets.

In working for the highway departments the students earned between \$1.25 an hour as laborers to \$2.60 for fledgling engineers. The average was \$1.60 an hour.

Many of the states have working arrangements with their technical colleges to give preference to civil engineering students and some have year-round cooperative arrangements whereby the students go to school for a given number of

months and then work for the highway department the rest of the year in order to earn money to continue their education.

Besides prospective engineers, the highway departments employed a number with other specialties—chemists for testing soils and materials, accountants and urban planners.



**McDonald's**

**15¢ HAMBURGERS**

**COOL Air Conditioned**

**GLADMER THEATRE**

**HELD OVER! 2<sup>nd</sup> BIG WEEK!**

**65¢ to 5:30 P.M.**

**FEATURE AT 1:00-3:45**

**6:30-9:18 P.M.**

ONCE IN A WHILE A PICTURE COMES ALONG THAT SPELLS FUN FOR ALL... WE HAVE SUCH A PICTURE IN "HATARI!"

**HOWARD HAWKS**

**1962**

**THE YEAR OF**

**HATARI!**

**TECHNICOLOR**

**YOU'LL THRILL TO THE FUN IN THIS BIG WONDERFUL SHOW!**



**THRILL!** See the missile that sets Red Buttons up in more monkey business than he can count. (\$5,000 to be exact.)

**ROMANCE!** See lovely newcomer Michele Girardon (LIFE Magazine, July 21, 1961) turn on the charm and start a triangle that keeps the men running in circles.

**JOHN WAYNE** **ROGER MARVIN** **BEAN GARTON**

**Next Attraction!**

**ROCK HUDSON-BURL IVES in**

**"THE SPIRAL ROAD"**

**CREST**

**DRIVE-IN**

**100% LANSING**

FRI. and SAT.

3 Hits ADM. 75¢

ECSTATIC ROMANCE... EXOTIC DANCES... EXCITING MUSIC IN THE WORLD'S LUSHEST PARADISE OF SONG!



**ELVIS PRESLEY**

**BLUE HAWAII**

**HAL WALLIS TECHNICOLOR**

**14 TROPIC SONGS**

**JOAN BLACKMAN - ANGELA LANSBURY - NANCY WALTERS - NORMAN THURBERG - THE KATZES - RELEASE**

Blue Hawaii First At 8:07 and 1:48

2nd Feature

A world of strange places and moralities... in the most different and touching love story of our time!



**WILLIAM HOLDEN**

**in Roy Neave's**

**THE WORLD OF SUZIE WONG**

**NANCY KWAN**

**as SUZIE WONG**

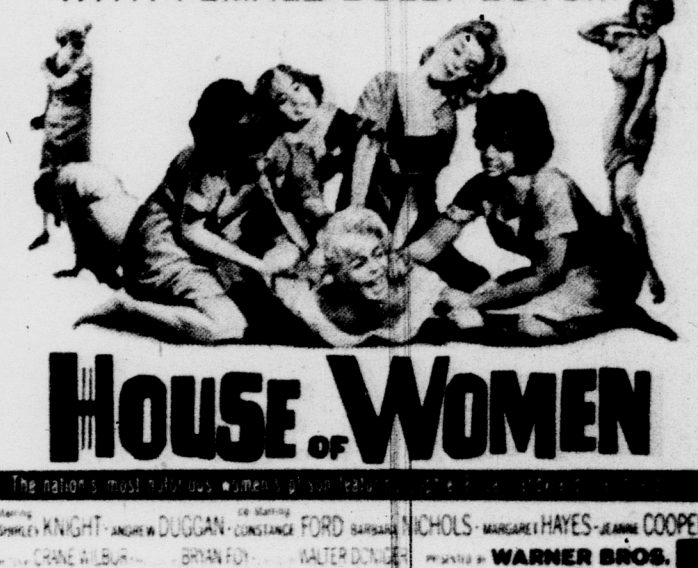
**SYLVIA SYMS - MICHAEL WILDING - JOHN PATRICK - RICHARD QUINE**

**TECHNICOLOR**

"Suzie Wong" Shown 2nd At 10:17

3rd Hit

SECRETS OF THE CELLS! SHAME OF INMATES! BABIES BORN IN JAILS! INNOCENTS THROWN IN WITH FEMALE BULLY-BOYS!!!



**HOUSE OF WOMEN**

**The nation's most notorious women prison tells the story of the women who live there.**

**Starring: SHIRLEY KNUIGHT - ANDREW DUGGAN - CONSTANCE FORD - BARBARA NICHOLS - MARGARET HAYES - JEANNE COOPER**

**Also Starring: CRANE WILBUR - BRYAN FOSTER - WALTER DONOVAN**

**PRESENTED BY WARNER BROS.**

House of Women Shown 3rd at 12:23



**Coffee**

**Breaks**

**Sandwiches**

**Pizza**

**Italian Food**

OPEN 11 A.M.

Air Conditioned

**CASA NOVA**

ED 7-1668

211 M.A.C.



## Newest Sound for Warning

What noise grabs a person's attention best?

Herbert J. Oyer, professor of speech, plans to find out. Working through a \$42,780 grant from the Office of Civil Defense, Oyer will attempt to determine what sound or combination of sounds would be the optimum warning signal in event of an attack on the United States.

What qualities would the optimum signal have in addition to being easily audible? Oyer, who has just started on the project, is not sure at this point.

"Offhand, however," he said in an interview, "I can think of several probable requisites. The sound should be of a disturbing nature. Perhaps it should be a sound that suggests danger to a person.

"It should be a sound that would not be confused with some other, something different from the telephone bell or a fire engine which people are used to hearing. It ought to arouse a person from sleep as well as compete with the noises of his regular environment."

The sound could resemble a human or animal sound, Oyer observed. Also, he added, several attention-getting noises could be combined into one signal.

One sound Oyer wants to try is "white noise." This is a blend of several frequencies (pitches) just as white light is a blend of several colors of the spectrum.

"White noise makes a sort of hissing sound, like a steam clothing presser," Oyer said. Slight variations in the blend, he added, produce other sounds.

The MSU researcher pointed out that frequency (pitch), intensity (loudness) and other properties of sound can be regulated to produce sounds of any given specifications, natural or unnatural. Sound waves can be clipped off and regulated in other unusual ways.

"We can do all kinds of things with sound," Oyer said, "but what is ultimately the best warning signal remains to be determined."

After a thorough review of past research related to this project, Oyer plans to conduct laboratory experiments and actual field trials to determine the relative warning values of various sounds.

### PLACEMENT BUREAU

The United States Air Force will be interviewing at the Placement Bureau on Wednesday. They will be interviewing all majors, all degrees for the Officers Candidate School program.

### AIR SEA TICKETS

We sell tickets for all major sea and air lines at official rates.



COLLEGE TRAVEL OFFICE  
130 W. Grand River ED 2-8667



**STRANGE NOISES**—Searching for the best sound to alert a populace to the danger of attack are Herbert J. Oyer, professor of speech, and research assistant, Sharon Thomas. The machine operated by Oyer is used to produce, regulate, record and play back a wide variety of sounds, natural and unnatural.

**TOP HITS**  
In Stock  
**DISC SHOP**  
OPEN EVENINGS

"Central Michigan's Favorite Playground"

## LAKE LANSING AMUSEMENT PARK

**FAMILY NIGHT WEDNESDAY**

- Admission
- Parking
- Picnic Area

**FREE**

SPECIAL REDUCED PRICES for All Picnic Groups  
Call FE 9-8221 for reservations

Weekends & Holidays 12 noon - 12 midnight  
Open Week Days 2-5 pm 7-12 pm except Monday

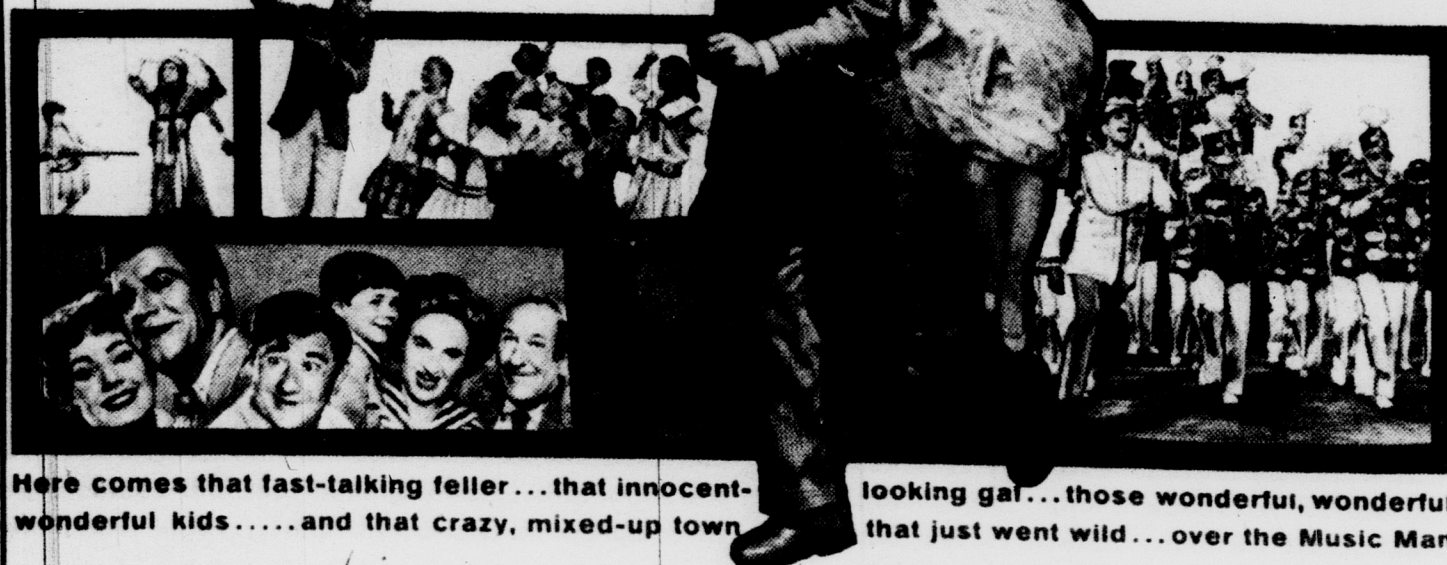
**4th WK..** . . .and How Every-body Loves It!

## Meredith Willson's **the MUSIC MAN**

**COOL Air Conditioned MICHIGAN THEATRE**

Program Information IV 2-3905

*The most marvelous movie ever made! From the Broadway play that kept playing forever!*



Here comes that fast-talking feller... that innocent-wonderful kids..... and that crazy, mixed-up town

looking gal... those wonderful, wonderful, that just went wild... over the Music Man.

STARRING **ROBERT PRESTON · SHIRLEY JONES · BUDDY HACKETT · HERMIONE GINGOLD · PAUL FORD**

CO-STARRING

SEE FEATURE AT

1:00, 3:45, 6:30, 9:20 P.M.  
Sun. 1, 3:35, 6:20, 9:25 P.M.

Warner Bros. Records' SOUND TRACK ALBUM available now at your favorite dealer.

**TECHNIRAMA · TECHNICOLOR**  
PRESENTED BY WARNER BROS.

Next Attraction: Burt Lancaster as Robert Stroud "Birdman of Alcatraz"



## Spartans Top Nation

(Continued from page 1)  
tional opponents, Stanford and North Carolina, were given a chance to break into the top 20.

Joining Saines and Behrman on the All-America team are ends Hugh Campbell of Washington State and Tom Hutchinson of Kentucky; tackles Jim Dunaway, Mississippi, and Bobby Bell, Minnesota; guard Dave Watson, Georgia Tech; center Lee Roy Jordan, Alabama; quarterback Sonny Gibbs, Texas Christian, and halfbacks Charlie Mitchell, Washington, and Jerry Stovall, LSU.

Daugherty, Saines and Behrman were pictured along with the nine other All-Americans in a two-page color photograph in the magazine. An action color shot of George Saines and his teammates in action against Notre Dame is also shown.

Playboy is not the only national magazine or news service to give Michigan State high regard for the 1962 season. The United Press International's board of coaches put the Spartans eighth while they predicted Ohio State for second or first along with Alabama.

Inside Football, issued by Sport Magazine, agrees with UPI and puts MSU eighth in the nation. Street and Smith's Football Annual pegged the Spartans one notch higher—seventh—and added MSU tackle Ed Budde the All-America candidate list.

Two other magazines, while not venturing national rankings, picked Michigan State to place second in the Big Ten behind Ohio State.

Playboy's predictions came on the heels of two national collegiate football surveys which showed the Spartans were a quarter-century national power.

One survey by the Associated Press put the Spartans sixth among the 25 most successful football teams in the last 25 years on a won-lost basis. Oklahoma was first with 191 wins, 53 losses and 10 ties for a .783 percentage compared to Michigan State's 148 wins, 60 losses, 10 ties and .712 percentage.

Michigan was eighth with a .702 percentage. Notre Dame was second, Tennessee, third,

Army fourth, and Ohio State fifth. The MSU record spans the coaching careers of three men: Charles W. Bachman from 1933 to 1946; Clarence Biggie Munn, new athletic director, from 1947 to 1953 and Daugherty, 1954 to 1961.

The other Associated Press survey revealed that Daugherty was 12th among active coaches on basis of won-lost records. He has coached his teams to 48 wins, 23 defeats and two ties. Bud Wilkinson, Oklahoma coach, piled up the best record over the years. Former MSU assistant coach Dan Devine ranks third.



GEORGE SAINES

## 100 to Gymnastics Clinic

(Continued from page 1)

Thursday at the Men's Intramural Building arena starting at 7:30 p.m. Tickets for this show will be priced at \$1 for adults and 50 cents for students. This will give the youngsters a chance to perform in front of the public, and will offer teachers and coaches among clinic registrants a chance to help plan a show and later evaluate the effort.

Among the clinic registrants are Ed Bengston, coach of St. Clair High School's state champions; Ron Aure, 16, of St. Clair, the state free exercise champion; Sally Noble, 16, of East Lansing, the Michigan AAU horse vault champion in 1961; Susan McDonnell, 16, senior provincial gym champion in Ontario and in Quebec and Helen Content, 11, promising Lansing youngster.

Enrolled on the teaching staff are Bill Meade, coach at Southern

Illinois, the 1962 NCAA team runner-up; Paul Fina, National AAU free exercise champion; Ed Halik, director of men's activities, American Sokol; Mildred Prchal, director of women's activities, American Sokol; Jim Rozanas, one of the nation's top acrobatic and dance instructors; Ed Cole, national trampoline champ from Michigan and Herb Vogel, coach at Flint Junior College.

Additional members of the clinic teaching staff are Bob Stout, former U.S. Olympian and now a prep coach in Philadelphia; Ernestine Russell Carter, two-time Canadian Olympian and former MSU student now teaching at Lansing Everett, and Michigan State performers Dale Cooper, Jerry George, Jim Durkee and Todd Gates.

Duke has won the Atlantic Coast Conference golf title the last two years.

## Ex-Spartan Holland Coach

Jim Jebb, 30, former stand-out Spartan gridder, Saturday was named head football coach at Holland, Michigan High School. Jebb played three years at tackle for MSU and wound up his college career as starting left tackle for the Spartans in the 1954 Rose Bowl game. MSU was victorious over UCLA, 28-20.

Jebb has been line coach under retiring head coach, William (Bill) Hinga, for the last three years.

Jebb served two years as line coach at Monroe before moving to Holland. He had two years coaching experience while serving in the Army.

He was All-City and All-State while at Grand Rapids Catholic Central.

## Let HENRY'S Make Every Meal A SUMMER PICNIC



A Complete Meal only **35¢**

Make Henry's A Habit

**HENRY'S DRIVE-INS**

1553 Michigan  
1 Block West of Brody

## "LOLITA is laced with brilliance."

—LIFE MAGAZINE

"The miracle remains that such a movie was ever made at all—and made so well." —LOOK MAGAZINE



FOR PERSONS OVER 18 YEARS OF AGE

METRO GOLDWYN MAYER presents in association with SEVEN ARTS PRODUCTIONS  
JAMES B. HARRIS and STANLEY KUBRICK'S **LOLITA**  
Starring **JAMES MASON** **SHELLEY WINTERS**  
**PETER SELLERS** **SUE LYON**  
Directed by **STANLEY KUBRICK** Screenplay by **VLADIMIR NABOKOV** based on his novel "Lolita" Produced by **JAMES B. HARRIS**

Selected for Showing at Venice Film Festival

**STARTS TODAY!**

60¢ to 5:30 P.M. • Eve. & Sun. 90¢

Feature Shown 1:00 - 3:45 - 6:30 - 9:20

**COOL Air Conditioning**

60¢ to 5:30

**CAMPUS THEATRE**

FIRST SHOW  
7:00 P.M.  
TONIGHT ONLY

ADULTS 90¢

FEATURE 7:20 - 9:30

THE DAZZLING SHOW  
OF SHOWS — IT'S  
PACKED WITH PLEASURE!

THE BEST IN FOREIGN FILMS

**STATE THEATRE**

PROGRAM INFORMATION 332-5817

OPERA  
FILM  
CLASSIC!

SHOCKING...VIVID...EXCITING!

**PETER SELLERS**  
in a totally different role!

NEVER  
LET GO

PETER SELLERS  
RICHARD TODD  
ELIZABETH SELLERS

STARTING TOMORROW-FRI.

**The CHOCOLATE SOLDIER**

starring **NELSON EDDY**  
**RISE STEVENS**

Nigel BRUCE • Florence BATES  
Directed by ROY DEL RUTH  
Produced by VICTOR SAVILLE



**STATE GRIDDER**  
RATED No. 1

Read it in the Sept.

**PLAYBOY**

now on sale at the

**PARAMOUNT  
NEWSTAND**

Corner Washington  
and Michigan Ave's

**TOP HITS**

In Stock

**DISC  
SHOP**

OPEN EVENINGS



# SHAHEEN'S

Open 7 Days  
INCLUDING SUNDAY  
9 A.M.-9 P.M.  
521 E. GRAND RIVER  
EAST LANSING

FROM  
GROUND BEEF TO TOOTHBRUSHES  
SHAHEEN'S ... OFFERS YOU EVERYDAY



## Savings

FRESH GROUND BEEF

1 lb FREE      3 lbs **1.19**

FRYING CHICKEN PARTS

BREAST  
WITH RIB

1 lb **49¢**

LEGS WITH  
BACK PORTION

1 lb **39¢**

MICHIGAN RED HAVEN

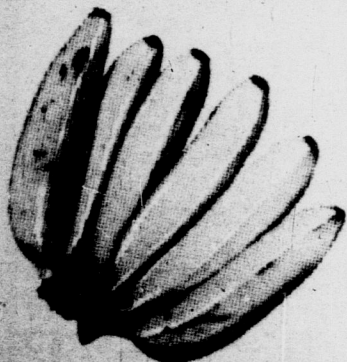
PEACHES 4 lbs **39¢**

HARD GREEN HEADS

CABBAGE 2 heads **29¢**

HOME GROWN

TOMATOES 2 lbs **25¢**



MELLOW RIPE

BANANAS

**10¢ lb**

### DISCOUNT

### HEALTH & BEAUTY CENTER

Now You can SAVE on all your Toiletry and Health needs at EVERYDAY LOW DISCOUNT PRICES  
--over 1200 Items from which to choose--

PEPSODENT

Toothbrush  
20¢ off

Save **35¢** Reg.  
34¢ Price 69¢

MAALOX LIQUID

**\$1.17**  
\$1.70 Reg. Price      SAVE 53¢

LANOLIN PLUS  
SHAMPOO'S

Reg-Dandruff & Egg

Reg. **71¢** Save  
99¢ 28¢

| WHY PAY MORE                           | Reg.   | You pay | Save   |
|--|--------|---------|--------|
| Aqua Net Hair Spray                    | \$2.00 | .99     | \$1.01 |
| V.O.S. Shampoo Reg. & Dry              | 1.00   | .72     | 28¢    |
| Get Set Hair Set Lotion                | 1.50   | 1.08    | 42¢    |
| Polident Deal W/Free Denture Cup       | .98    | .76     | 22¢    |
| Brylcreem W/Free Men's Hair Brush      | .98    | .76     | 22¢    |
| Rapid Shave Deal                       | .98    | .74     | 24¢    |
| Hanley Aspirin Deal                    | .59    | .44     | 15¢    |
| Chock Vitamins                         | 2.00   | 1.43    | 57¢    |
| Odorono Cream 1/2 Price Offer          | 1.00   | .37     | 63¢    |
| Evening in Paris Cologne & Talcum Deal | 2.00   | .75     | 1.25   |
| Lady Esther                            | .98    | .73     | 25¢    |
| White Cross 1st Aid Kit.               | .59    | .47     | 12¢    |

Look For The Yellow Tags - They Show  
You How Much More You Save On Every  
Item At East Lansing's Only Discount  
Health Aids Center



# Fish Fossil at Museum

By SUSAN JACOBY  
Of The State News Staff

Fragments of a 350 million-year-old fish from the Devonian period of history, possibly the first of its kind found in Michigan, are being studied at the MSU museum.

MSU graduate Robert Carroll discovered the bones seven miles west of Alpena at the shale beds of the Huron Portland Cement Co. Carroll, a Mason resident, is doing graduate work in paleontology at Harvard. Paleontology is the study of extinct forms of life.

Victor Hogg, curator of exhibits at the MSU museum and assistants Dave Bliss and Zeonon Billeadeaux brought a truck to aid Carroll in collecting the fragments.

"The bones were encased in over one and one-half tons of limestone," Hogg said.

The Devonian period of geological history was characterized by a rise of fishes. The fish at the MSU museum is a placoderm, or armored fish.

"The species was about 30 feet long," Hogg said. "Its mouth would have been about four feet wide and its four cutting teeth would have measured nine inches long."

The area where the fish lived was probably covered by a shallow sea, as land plant fossils were also found near the bones. Plants of the species *calixylon* were present.

"These were the first known land plants," Hogg explained. "They are the ancestors of today's tree fern."

Assembling the fish may prove difficult. The bones will have to be extracted from limestone.

"Assembling the skeleton would depend largely on the number of pieces we have," Hogg said. "If there aren't too many fragments missing, we can make plaster casts of the missing ones."

"We won't do anything with the fragments immediately, as this would require the help of a trained paleontologist. However, it might be very interesting to assemble the fish, particularly if it is the first one found in Michigan."

Scientists are able to tell the age of fossils such as the one found near Alpena by studying radioactive rocks. All radioactive substances turn into other forms of matter after a set period of time. Thus, scientists are able to determine the exact age of radioactive earth layers.

"While there is no radioactive matter near Alpena, we can compare the fossil with classified matter from other areas. Thus, we were able to pinpoint its origin as lying within the Devonian period."

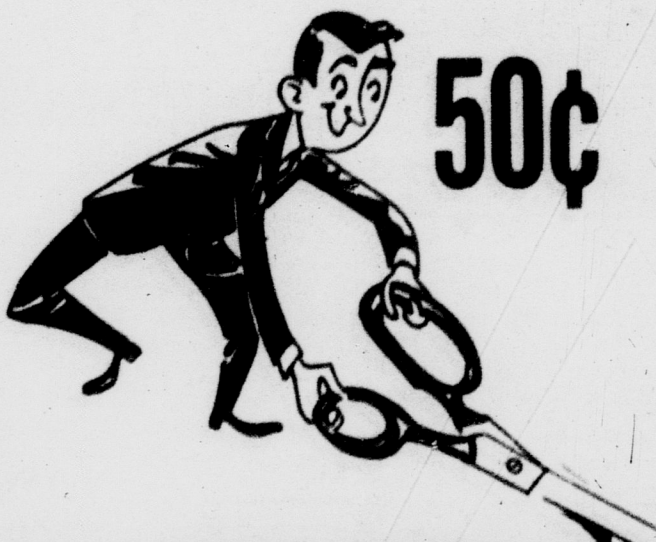
The first known amphibians and lobed-fin fish appeared during the Devonian period. These eventually evolved into land reptiles.



**FOSSIL FRAGMENTS**--Victor Hogg, curator of exhibits at the University museum, examines a fragment of a 350-million-year-old fish found near Alpena. Set in limestone, the bones will be extracted and the skeleton of the fish assembled if enough fragments can be found. --State News Photo.

FLASH CLEANERS Frandor FLASH CLEANER

## Clip and Save . . .



| VALUABLE COUPON   |  |                  |
|---|--|------------------|
| THIS COUPON WORTH 150   |  |                  |
| 50¢ OFF Our Regular Price of \$2.00   | 8 lb DRY CLEANING  | With This Coupon |
| YOU MUST BRING IN COUPON WITH CLOTHES-- Expires Sat. Aug. 18th.             |  |                  |
| Coupon Good Only During Attended Hours 7:30 a.m. to 9 p.m. --Sat. to 7 p.m. | Also GOOD FOR 50¢ with Professional Dry Cleaning Order of \$2.00 or More |                  |

One-hour dry cleaning and shirt laundering at no extra charge

--everyday including Saturday!

Same day service on wash pants and shirts.

OPEN

Mon Thru Fri

Till 9 pm

Saturday

Till 7 pm

# Flash

**CLEANERS**

A SHIRT LAUNDERERS

and coin-op Dry Cleaning

FRANDOR Shopping Center

FLASH CLEANERS Frandor FLASH CLEANER

## TOP HITS

In Stock  
**DISC SHOP**

OPEN EVENINGS

# When It's Time To Sell Your Books...

## GET CASH for



## TEXTBOOKS

When that last exam is finished think of Campus Book Store

for the place to sell your books. Get Fast Service at . . .

**E. Lansing's Department**

Store for Students

# CAMPUS BOOK STORE

(ACROSS FROM THE UNION BUILDING)



# Many Calls! Room Rented Immediately!

Single room for men. Approved.  
Call ED 2-0000 or 355-0000. 544  
University Dr. Parking. \$6. 5

## get BIG RESULTS with a low cost WANT AD

- AUTOMOTIVE
- EMPLOYMENT
- FOR SALE
- FOR RENT
- LOST & FOUND
- PERSONAL
- PEANUTS PERSONAL
- REAL ESTATE
- SERVICE
- TRANSPORTATION
- WANTED

### DEADLINE:

9:30 a.m. one class day before publication

### PHONE:

355-8255 or 8256

### RATES:

1 DAY.....\$1.00  
3 DAYS.....\$2.00  
5 DAYS.....\$3.00

(Based on 15 words per ad)

There will be a 25¢ service and bookkeeping charge if this ad is not paid within one week.

### ★ Automotive

LAY AND MATTHEWS, 1322 E. Michigan, IV 5-2243. Do you want to sell your car? See us. We trade up or down. Buy any make or model. C.L.F.

1955 Pontiac, 4-door, 8. Good running condition. Quick sale. Call NO 9-2482. 17

Rambler Wagon 1960 White. Standard transmission, radio, heater, seat belts. Good condition. Call ED 2-3108. 17

1958 Pontiac SuperChief--2 door hardtop. Blue. Top performance. Price negotiable. Phone 355-7576 (day); 355-7760 (night). 19

1957 Volkswagen Deluxe Sedan. Excellent tires. Recently overhauled brakes, transmission, engine. Over-all condition excellent. \$595. 355-7988. 18

For Sale: '53 Ford, 2-door, automatic transmission, radio, heater, good body. \$100 or best offer. ED 7-7639. 17

MGA 1956 Convertible, white, red interior. 31 MPG. All extras. Perfect condition. Must Sell. ED 2-0416. 18

1948 Hudson 6-Cylinder Sedan. Good Condition--No Rust. \$80 or best offer. Call IV 5-8003. 19

1960 Volvo 4 door.

1961 96 SAAB.

Major overhaul work on all foreign cars.

### STRATTON SPORTS CAR CENTER

1915 E. MICHIGAN  
DIAL IV 4-4411

1954 MG TF/Brilliant Red! Check our deal on this one before you buy!

Lettich & Stenberg  
2628 E. Kalamazoo  
484-3229

Triumph TR-3 1959. Hard and soft tops, tonneau cover, radio, heater, Dunlop RS-4 tires, IV 5-1185. 18

### ★ Automotive

1961 Starfire Convertible completely equipped. Classic in all its original beauty. Finished in Dresden Blue with white top. 20,000 actual miles.

Two sharp foreign models: 1958 Volkswagen in green; 1961 Renault in beautiful pearl white.

Corvairs 1960-1962 Outstanding Selection of America's favorite compact. Sedans, Coupes, Station wagons.

### SPARTAN MOTORS INC.

3000 E. MICHIGAN  
IV 7-3715

1953 Ford convertible. New tires, new top, new paint. V8 standard shift. Excellent shape. Reasonable. TU 2-6820. 19

Volvo 1958. Excellent condition, any reasonable offer will not be refused. Call 355-9902 after 5 P.M. 17

1956 Plymouth 6 automatic. Excellent Condition. \$495.

1958 Vauxhall--Runs good. \$395.

### DAN O'SHAUGNESSEY

2501 E. Michigan  
DIAL IV 9-2388 17

1956 CHEVROLET SPORTS COUPE. Original owner. Good condition. 2-tone brown and beige, w/w tires. ED 7-1428. 7-9 p.m. 17

1954 CHEVY 4-door Station-wagon. Standard Transmission. Good Tires. \$100. ED 2-6124. 17

1958 Renault 4CV -- Radio, heat, 32 mpg, w/w tires, 15,200 miles. Good condition. \$400. 332-4517. 19

1960 FORD STARLINER Hard-top 8 cylinder, automatic transmission. Excellent condition. \$1475. Will consider trade for cheaper car or motorcycle. ED 2-2111. 19

1958 Vauxhall. Recently overhauled. Good condition. 31 mpg. \$425. Come to Lot #216--Trailer Haven. Next to Gables. 19

### AUTOMOTIVE REPAIR

We service all Foreign Cars! Come in to see us soon!

Mel's Auto Service  
315 W. Grand River  
332-3255

### FOR BETTER SERVICE

That will keep your car on the "go"--stop in at--  
SPARTAN TEXACO SERVICE.  
Batteries, tires, complete.  
lubrication, wash jobs.  
Quality Texaco Products and Skilled Service.



SPARTAN TEXACO SERVICE  
CORNER GRAND RIVER  
and SPARTAN  
Phone 337-9034

### ★ Employment

Secretary. Full time. Short hand not necessary. Must be good with figures. Start immediately. Call Mrs. Jackman, ED 7-0371 for appointment. 14

Registered Nurses for afternoon and night duty. Good salary and personnel policies. Call ED 2-0801. 19

### ★ Employment

COED MODELS needed for Summer and Fall State News promotions. Come to the State News Office, room 341 Student Services Building after 3. No calls please.

JOIN AVON today for good earnings. You'll be glad you did. For personal interview write or call --Mrs. Alana Huckins, 5664 School Street, Haslett, Michigan, IV 2-6893. C

Men & Women to sell party plan quality toys. Full or part time. No investment. H & B Toy Sales. IV 7-0851. 19

### ★ For Rent

T. V. RENTALS -- For your room or apartment. From \$5 -- \$7 a month. ALL SETS GUARANTEED. Phone NEJAC T. V. RENTALS ED 28978 or 489-1684. C

### APARTMENTS

Congenial, retired lady to share my nice downtown home. Everything furnished. IV 9-7369. 17

8 Unsupervised apartments for rent. 1 or 2 bedrooms. Newly furnished. Air conditioned. All private baths. Close to campus. Parking for all. ED 2-3792. 19

Roommate to share 2 man furnished apartment 2 blocks from campus. Call ED 7-0366 after 5 P.M. 17

### HOUSES

Campus-near. Tranquil, suburban environment. 3 bedrooms. 2 baths. 2 car garage. Spacious lawn. ED 2-2788. 19

Pleasant, country home. 14 miles from campus. Large play area and garden space. Rent to be worked off by occasional help with dairy herd. NI 6-5960. 18

### ROOMS

MEN AND WOMEN: Single and double rooms available for rest of summer session. Special wing for women. SPARTAN HALL, 215 Louis, one block from campus. ED 2-2574. t.f.

FALL TERM: Approved, supervised rooms for men. Singles \$9.00; Doubles \$6.50. Large comfortable rooms with wash-bowl in each. Lobby with TV, phones, parking, laundry facilities. Spartan Hall, 215 Louis, one block from campus. ED 2-2574. t.f.

### ★ For Sale

SMITH-CORONA Portable Typewriter. Excellent condition. \$60. Call Patrick Pellow, 355-6248. 17

Piano - Story & Clark - Newly refinished. \$75. ED 2-8225. 18

Peaches, Plums, Pears, Apples, Blueberries, Honey Rocks, Sweet Corn, Farm Fresh Eggs. Also other fruits and vegetables at reasonable prices. Roadside Farm Market, 3 miles east of East Lansing on U.S. 16 at Okemos Road. t.f.

ZIG-ZAG equipped SINGER in lovely wood console. Makes designs, button holes. Yours for \$30.69 or pay \$1.10 per week. IV 9-3011. 17

Sewing Machine, SINGER ZIG-ZAG. Does all your fancy sewing plus button holes, blind hems, overcasting, etc. Pay \$58.60 cash or take on payments of 1.25 per week. IV 5-1705. 17

House Trailer 28' with attached 8' x 12' insulated, heated annex. Furnished study and living-room. On choice lot, one mile East of Campus. Phone 332-1460. 19

### ★ For Sale

Trailer 1957 General. 2 bedroom. 41' x 8'. A 11 Mobil Homes Manor. ED 2-0260. 18

Room air-conditioner. McGraw-Edison. New in June. Used about 15 days. \$165. ED 2-3343. 18

Cold Spot Refrigerator. 11 1/2 cubic feet. One year old. Perfect condition. Has five-year guarantee. \$118. Call 332-3950. 18

Underwood Typewriter \$50. Like new German Camera and Electronic Flash. Also lawn sweeper. Call 485-6963. 17

Girl's full sized American bicycle. Good condition. Reasonable. Phone 332-5119. 18

8 mm Movie Camera Bauer 88 B with 1.9 Schneider Xenoplan Normal and Schneider Curtar Wide Angle Lenses. Compumatic (Bolex System). Variable Speed. \$55 ED 7-0531 6-7 P.M. 19

Labrador Retriever Puppies. Ideal family pet or all-purpose hunter. ED 7-7213. Wallace Reese, 1569 Hatch Road, Okemos. 19

Used 1959 Mo-Ped Motor Bike. Best offer. Call 355-7871 after 6. 19

Light-weight Motorcycle. Graduating, must sell red and chrome 1959 German Hercules J-Be. Excellent condition. Economical transportation, perfect for campus. Reserve fuel tank, adjustable shocks, buddy seat, locking tool boxes, saddlebags. New battery, tubes, chain, Extra gas can, cover, windshield, tubes. Call ED 2-2969. 19

Royal Futura Portable in excellent condition. Leather carrying case. Call Sharon Riddle IV 2-6275 days or IV 5-7493 evenings. 19

Bassinet complete, Boys bike, Dressers, Size 10 maternity clothes, Bottle Sterilizer, Gun. All reasonable. ED 2-2048. 19

Magnolia Mobile Home - 1954. Two bedroom. Youngstown Kitchen. On landscaped trailer park lot. One mile from campus. Mobile Homes Manor A-5. Priced to Sell! Phone ED 7-0787. 18

### ★ Lost & Found

LOST!! Textbook for ED 312. PSYCHOLOGY of HUMAN GROWTH and DEVELOPMENT, By Baller & Charles. Lost either in room 102 or 114 Bessey Hall. Please call Gail at 337-1527 after 6:00.

### ★ Personal

#### VACATIONERS!

Take along a first aid kit. Your money back if not used.

Marek Rexall  
Prescription Center  
301 N. Clippert (by Frandor)

Fellow Married Students: Christmas toys free when you have a toy party helping many. 355-2750. 19

For Rent - Twelve months of auto insurance for students - Bubolz - 332-8671 - upstairs next to Spudnut. C16

Once you shop for 20 children of different ages with TOPS IN TOYS you always count on their services. IV 5-7824. C

### ★ Real Estate

1951 4-bedroom, dining room, new kitchen, recreation room, study, fenced yard. Near M.S.U. ED 2-6268. t.f.

### ★ Real Estate

3 bedroom house for sale or rent. \$135 a month. Call Fe 9-2164. 19

Built a saleable equity while in school. Ten minutes from M.S.U. Small, one-bedroom house available to mature, married student couple at \$50 per month. First year's rent makes your down payment 708 S. Hayford, Lansing. Call ED 2-4113. 17

3 bedroom brick house at 1423 Wilshire Rd., Haslett. \$14,900. For Sale by owner for less than FHA valuation. FE 9-8544. 18

East Lansing. An exceptional all brick, air conditioned home with in easy walking distance of campus. 6 spacious rooms, beautiful condition, moderately priced. Call Romaine E. Hicks, Broker. IV 9-4688. Evenings, ED 2-2945. 19

Brick Ranch Income. 3 bedrooms plus 3 room studio apartment ground floor. Apartment always occupied by faculty. Private entrance and parking for tenants. Quiet area, large lot, trees. Phone ED 7-7676. 18

1063 Lilac. 3 bedroom, den, fireplace, spacious kitchen-dining area, large landscaped lot, FHA. Available September. ED 7-1887. 19

Faculty Neighborhood. 2 blocks to Okemos Elementary and Junior High School. 3 bedroom Cape Cod on shady landscaped 3/4 acre lot. 1 1/2 baths, dining room, full basement, screened porch. Call ED 2-0267. 19

River lot, 3 acres; also almost 2 acres on Round Lake Road, 15 minutes to college. 10% down or car, tractor, or whatever. Call NO 99117. 17

Okemos Area - 4 bedrooms. Very beautifully landscaped lot. 2 eating areas, 2 fireplaces, 2 car garage, 2 full baths, and best of all, only \$23,500 (4 3/4%). Call Jim Walter, TU 2-4326 Eipper Realty, Realtors. IV 2-5541. 17

### THESIS TYPING & PRINTING

at Wonch Graftic Service puts you at the top in your orals!



Phone 484-7786 or stop at 1720 East Michigan Avenue, Lansing.



## WANT ADS !

### ★ Real Estate

East Lansing. Lovely brick 1 1/2 Story Cape Cod. 2 bedrooms and bath up. Many extras, garage. 5 minute walk to MSU, 1 minute to shopping. 128 Gunson, Phone ED 2-8216. 19

North Pine, close to Capitol. Income 3 bedroom apartment first floor. 4 bedrooms, bath and kitchen second floor. Call IV 4-9340. 19

LOOK ME OVER!! Hillbrook Park. 3 bedroom ranch. 10 minutes MSU. Fenced yard. \$1100 down. Inquire 5794 Montebello. 19

East Lansing. 3 bedroom house double lot. Down payment \$700. Priced under \$13,000. Phone 337-7574. 19

### ★ Service

THESES PRINTED  
Rapid service, quality Diazo prints. Also blue printing.  
CAPITAL CITY BLUE  
221 S. Grand  
Lansing--IV 2-5431

ALTERATIONS. Hemming & restyling: formal, trousers, skirts, etc. NEEDLE'N THREAD Shop. 108 Division, behind Campus Drug Store. ED 2-5584. C

### DIAPER SERVICE

SERVICE to your desire. You receive your own diapers back each time. With our service, you may include your baby's undershirts and clothing which will not fade. White, Blue or Pink diaper pails furnished.

AMERICAN LAUNDRY  
111 E. WASHINGTON  
IV 2-0864 C

### ★ Service

Domestic and Imported yarns and patterns. 10% DISCOUNT on domestic yarns to MSU students. Alteration work on knit garments; regauging of patterns.

MARION'S YARN SHOP  
3223 Mall Court  
(Frondor)

EXCELLENT T. V. REPAIR on all makes and models. All work guaranteed. DISCOUNTS TO ALL COLLEGE HOUSING. Open 8 A.M. to 8:30 P.M. T. V. Technicians, 3022 E. Michigan. Call IV 7-5558 C

WE TRAVEL anywhere - any time. Quality catering for all occasions - to fit your budget. MICHIGAN CATERING SERVICE IV 9-3343. C

### STUDENTS

HiFi--Stereo equipment. Ampex--V of M--Fisher. Also complete "CB" gear. Call after 7 pm, ask for Bob Carrington--ED 2-8068. "Your Man in Audio". 19

T.V. SERVICE. Special rate for college housing. Service calls, \$4. Absolute honesty. ACME TV., 1610 Herbert. IV 9-5009. C

Application and Passport pictures now being taken at HICKS STUDIO, while you wait or one day service. ED 2-6169 for appointment. C

Reliable Coed Available for baby sitting afternoons and evenings. Reasonable rates. Call 355-2053. 18

House painting by 2 students. Experienced. Reasonable rates. Call ED 2-6336 or ED 7-7837. 19

### TYPING SERVICE

EDIE STARR: Typist, theses, dissertations, term papers, general typing. Experienced, IBM electric typewriter. OR 7-8232. C

### ★ Service

For Fast Accurate typing on elite IBM typewriter call 339-2139. C

Accurate typist--term papers, theses, manuscripts, etc. 332-8064. 19

TYPING: Term papers and general typing. Call ED 2-8426. 19

Typing General and Thesis. Experienced. Reasonable Rates. Call ED 7-0138. 18

ANN BROWN Typist and multi-lith offset printing (black & white & color). IBM. General typing, term papers, theses, dissertations. ED 2-8384. C

### ★ Transportation

Ride WANTED to Los Angeles or San Francisco. Share driving expenses. August 30-31. Call Mark 355-9499. 19

Ride Wanted: From Dimondale to vicinity of Eppley Center each day. Hours 8 to 5. Call 355-1896. 17

### ★ Wanted

House wanted by private party with cash. Prefer East Lansing or vicinity. Call ED 2-5977. 19

### ★ Wanted

Girls English bicycle. Must be in good condition. Call Max Seeds at 355-3373. 19

Mature student looking for a small house (furnished) near campus. References on request. Call 355-8255 or write to Box 341 Student Services Bldg. Att: Fred. t.f.

## Fluoride

(Continued from page 2)

city in this country. Price: \$2,000 or more.

East Lansing, fluoridating its water since 1955, uses hydrofluosilicic acid with a solution feeder.

### PAR-MORE GOLF COURSE

Regulation 9 Holes  
Par 3-9 holes  
1000 yd. driving range  
Corner Park Lake Road  
and East M-78  
Phone ED 2-3432

## IM News

IM open softball swings into the final few games of the season before the championships next week.

Today at 6 p.m., V. Kings play Tony's Boys at field 2, while the Butcher Boys meet the All Stars on field 3.

Monday the Paperbacks and the Errors play at field 2 and the Kellogg Flakes meet the Tripends on field 3. Both games are at 6 p.m.

The championship will be decided Tuesday or Wednesday of next week, depending on the weather, with the top team in each of the two blocks playing.



Continental Imports  
Lansing's  
Volkswagen  
Dealer  
226 E. Kalamazoo  
485-1743

# CASH

FOR

# BOOKS

NOW OR ANYTIME  
NEED CASH? ?  
BRING YOUR BOOKS  
TO

# GIBSON'S

BOOKSTORE

CORNER W. GRAND RIVER & EVERGREEN

## PRINCESS GARDNER®

Windsor Rose  
Accessories



Rose floral tapestry embellished with gold lines

|                          |         |
|--------------------------|---------|
| A. FRENCH PURSE          | \$5.00* |
| B. CIGARETTE CASE        | \$2.95  |
| C. EYE GLASS CASE        | \$2.95  |
| Not shown:               |         |
| D. CIGARETTE LIGHTER     | \$2.95  |
| E. KEY CHAIN             | \$2.95* |
| F. DOUBLE EYE GLASS CASE | \$3.95  |
| G. COSMETIC CASE         | \$5.00* |
| H. CLUTCH                | \$5.00* |

\*Plus tax

Liebertmann's

DOWNTOWN LANSING  
107 S. Washington

EAST LANSING  
202 E. Grand River



# Attend Church This Weekend

## First Church Of the Nazarene

Genesee at Butler

Church School - 9:45 a.m.  
Morning Worship- 11:00 a.m.  
Youth Groups- 6:00 p.m.  
Evangelistic Hour- 7:00 p.m.

Nursery Provided  
Harry T. Stanley, Minister

## First Christian Reformed Church

240 Marshall St. Lansing

Rev. John M. Hofman, Pastor

Morning Service 10:00 a.m.  
Evening Service 7:00 p.m.

Those in need of transportation call Mr. Henry Bosch at ED 2-2223.

## Lansing Central Free Methodist Church

826 N. Washington, Lansing

Rev. F. W. Van Valin

Sunday School 10 a.m.

Morning Service 11 a.m.

Guest Speaker

Rev. V. J. Anderson

Youth Fellowship 6:00 p.m.

Evening Service 7:00 p.m.

Transportation by Cab-

Call IV 2-9857

WHAT THEN ARE WE TO DO?  
This question is asked every Sunday in the worship service of Central Methodist Church, Lansing. In fact, "What Then Are We To Do?" Sheets are prepared for every sermon. The minister offers five or six suggestions for study and application during the week. Approximately half the congregation takes a sheet home.

If you wish to worship where persons desire to "Apply Christianity," we invite you to worship with us next Sunday.

Services at 10:00 A.M.

SERMON

"How Essential is Jesus?"

Dr. Dwight Large preaching.

9 A.M. Prayer Service.

**Central Methodist Church**

Capitol at Ottawa

Across from the Capitol

## FIRST WESLEYAN METHODIST CHURCH

North Magnolia Ave. at Michigan

Sunday School - 9:45 AM

Morning Service - 11:00 AM

SERMON BY THE PASTOR

## SOUTH BAPTIST CHURCH

SOUTH WASHINGTON AT MOORES RIVER DRIVE, LANSING

HOWARD F. SUGDEN, D. D., Pastor

DESMOND J. BELL, Assoc. Pastor

Bible School 10:00 A.M.

Morning Worship 11:00 A.M.

Dr. Wilbert Welch

President Grand Rapids Baptist Seminary

7:00 P.M. Dr. Welch

Adult Youth Fellowship 8:30 P.M.

Call IV 2-9382 for free bus service morning and evening.

## First Presbyterian

Ottawa and Chestnut

9:30 Worship Service

Cribbery and Nursery Provided

SERMON

"Jesus Christ Is Lord."

Guest Minister:

Dr. H. Paul Sloan, Jr.

## All Saints Episcopal Church

800 Abbott Road - ED 2-1313

Rev. Robert Gardner  
Episcopal Chaplain to M.S.U.

Rev. Edward A. Roth  
Rector

Rev. George W. Tuma,  
Curate

SUNDAY SERVICES

8:00 a.m. Holy Communion

10:00 a.m. Morning Prayer or  
Holy Communion.  
Sermon & Church School.

## Clergymen Study Counseling

Clergymen in growing numbers are going back to school to study counseling at the graduate level.

The demand has become so great at MSU that many applicants for a unique program in pastoral counseling cannot be admitted.

The MSU program started only five years ago at the request of Protestant, Catholic and Jewish leaders and is already the largest

of its kind. It has about 30 students studying for the master's degree and 30 more at the doctoral level.

Modern times, modern stresses, wider acceptance of psychology and increasing awareness on the part of clergy of the importance of personal relations all play a part, report the men in charge.

## University Methodist

1118 S. Harrison Rd.  
Ministers: Wilson M. Tennant  
Glenn M. Frye

Worship Services

9:45 a.m. and 11:00 a.m.

SERMON By

Rev. Wilson M. Tennant

Nursery, crib room for all services.

Church School 9:45 a.m. all ages.

WESLEY FOUNDATION

George L. Jordan, Minister  
Director

Saturday Urban Dale

Trip to Warren Farm

Sunday Evening

6:00 p.m. Supper

7:00 p.m. Discussion

"How Free Are You?"

Wesley Foundation Visitors  
to Ingham County Home Tuesday at 6:45 p.m.

Bus operates around campus for all services.

WELCOME

## Edgewood Peoples Church

Interdenominational

469 North Hagadorn Road  
(5 blocks north of Grand River) ED 2-8693

MINISTERS

Rev. Truman A. Morrison

Rev. R. Paige Birdwell, Jr.

SUMMER SERVICE

9:30 A. M.

Sunday, August 19

Sermon by

Rev. R. Paige Birdwell, Jr.

"Two Types of Faith"

Church School, Cribroom  
through 5 years old, 9:30 a.m.

Affiliated with United Church  
Of Christ, Congregational-  
Christian, Evangelical and  
Reformed

WELCOME

Always a warm welcome at

## Seventh - Day Adventist Church

Temporarily meeting at  
University Lutheran Church  
Division and Ann St.

SATURDAY SERVICES

9:30 a.m. Sabbath School  
10:50 a.m. Worship Service

ROGER W. COON - minister  
For information or transportation call 355-0991.

## St. Johns Student Parish

Fr. R. Kavanaugh

Fr. T. McDevitt

327 M.A.C.

Sunday Masses

7:15-8:30-9:45-11:15  
(Babysitting at 8:30 & 9:45)  
Daily Masses 6:45 a.m.  
7:20 a.m. & 8:00 a.m.  
Saturday Masses 8:00 &  
9:00 a.m. Confessions daily  
during 8:00 a.m. Mass and  
Saturday 4-5:30 & 7:30-9 P.M.

Novena Services  
Tues. 7:30 p.m.

THURSDAY 7:00 P.M.  
MEETING & OPEN HOUSE  
Saturday Dance  
9 - 12 P.M.

Phone ED 7-9778

## Peoples Church East Lansing

Interdenominational

200 W. Grand River

at Michigan

SUNDAY SERVICE

10:00 a.m.

THE UNCONSCIOUS INFLUENCE OF A GOOD LIFE

Reverend Roy J. Schramm

Church School

10:00 a.m.

Crib room through 6th grade.

11:00 a.m. Fellowship Period-  
Refreshments

## University Lutheran Church and Student Center

National Lutheran Council  
Division and Ann Street, E.L.  
(2 blocks north of Berkey Hall)  
332-2559

Pastor: C. T. Klinksick  
Campus Worker: Tecla Sund

SUNDAY WORSHIP

9:00 & 10:15 A.M.

Sermon: "Churchmanship-  
The Latitudes and The Liberties."

Pastor Klinksick

SUNDAY SCHOOL

9 A.M. only

Nursery care is provided at  
all services.

STUDENT SUNDAY SUPPER

5:30 p.m.

Meet at the church

(Participating in  
United Campus Ministry.)

## First Church of Christ Scientist

709 East Grand River  
East Lansing

Church Service 11 A. M.  
Sunday School 11 A. M.

Subject

"SOUL"

Wed. Evening Meeting 8 P.M.  
Reading Room  
134 W. Grand River

Mon. thru Sat. 9 a.m.-5 p.m.  
Mon. Tues. Thurs. & Friday  
7:00 - 9 p.m.

All are welcome to attend  
Church Services, and visit  
and use the Reading Room.

## East Lansing Trinity Church

Interdenominational

120 Spartan Avenue

Rev. E. Eugene Williams  
Pastor

11:00 A.M.

"Godliness In The Home"

Dr. Norman R. Piersma

7:30 p.m.

"The Source of Eternal Life"

Dr. Piersma

Other Services

9:45 A.M. Discussion Group  
For University Students

7:00 P.M. Wednesday evening  
Prayer and Bible Study.

Phone the Church office,  
ED 7-7966 for information  
concerning bus schedule

## Martin Luther Chapel And Student Center

444 Abbott Road, East Lansing  
332-0778

Theodore K. Bundenthal,  
Campus Pastor

SUNDAY SERVICES

Worship Service

9:00 a.m.

"The Church Can Learn a  
Lesson From the World."

Rev. Claybusch

7:30 p.m.

Mr. & Mrs. Club

Call Rev. Woldt for

counseling

Church 482-2252 or

Home 485-0198

Transportation provided---  
ED 2-0778

## Eastminster Presbyterian Church

1315 Abbott Rd., East Lansing  
Rev. Robert L. Moreland,  
Minister

541 Walbridge Drive, E. L.

Study Phone: ED 7-0183

SUMMER PROGRAM

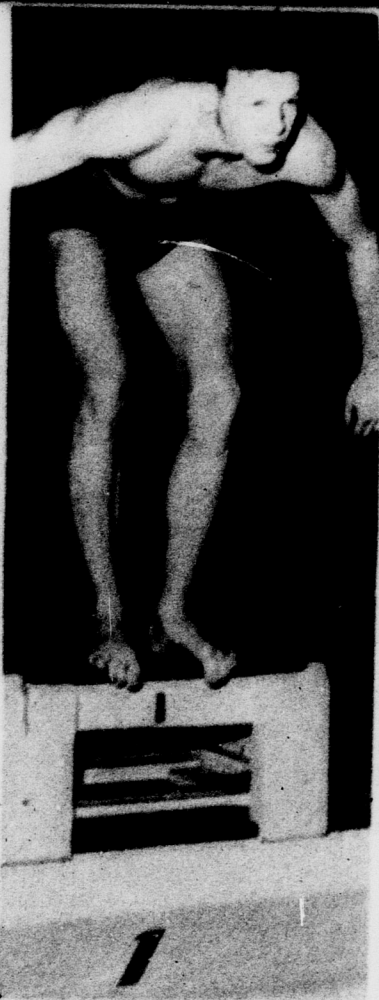
10:00 a.m. Church School for  
6th grade & under.  
10:00 a.m. Worship

Sermon

"Christian Concern"  
Elder Edward M. Barnett

For Transportation Call  
ED 7-0290





## Spartans Shine At Camp

Michigan State's Army ROTC cadets topped several competitive events at the six week Fort Riley, Kansas summer camp during June and July.

Richard Brackett, Wilmette, Ill., senior, was the camp's top swimmer. He won the 40 and 200 yard freestyle events, the 120 yard breaststroke. The trophies were garnered in competition with collegiate swimmers from all over the midwest, including other Big Ten schools.

Brackett was a varsity swimmer here at Michigan State. Now an Army second lieutenant, he reports shortly to Fort Benning, Georgia for his Army duty.

John Laing, East Lansing senior, fired a high 47 on the Army's "trainfire" rifle course to qualify for the Fort Riley Rifle team and to win third place among the 1500 cadets who competed. Laing also shoots on the Michigan State rifle team.

Paul F. Bergdalt, Vassar junior, topped his 190 man company in the Combat Proficiency Test. The Combat Proficiency Test is a physical training test set up to measure those skills necessary for a soldier in combat. It includes a speed crawl, a grenade throw for both distance and accuracy, a mile run, and similar events.

Bergdalt's 488 out of a possible 500 placed him eighth among the 1500 cadets in the camp. The average score for a trained physically fit soldier is 250.

**CADET TOP SWIMMER**--Ex-varsity swimmer Richard Brackett topped other cadets at Ft. Riley, Kansas ROTC Summer Camp swimming meet recently with three first places; 40 yard freestyle, 200 yard freestyle, and 140 yard breaststroke. Brackett underwent six weeks of training to fulfill requirements for commissioning as a 2nd lieutenant in the Army Reserves.

## Political Paperbacks

### THE PRESIDENT'S CABINET

by RICHARD E. FENNO JR.  
(From Wilson to Eisenhower)

**\$1.95**

### U.S. SENATORS & THEIR WORLD

by DONALD MATTHEWS

**\$1.95**

### THE STRUGGLE FOR JUDICIAL SUPREMACY

by ROBERT H. JACKSON

**\$1.95**

### ESSAYS IN CONSTITUTIONAL LAW

by ROBERT G. McCLOSKEY

**\$1.95**

### DESEGREGATION & THE LAW

by ALBERT BLAUSTEIN  
& C.J. FERGUSON JR.

**\$1.95**

### For The Outdoorsman GUN DIGEST

by JOHN AMBER

**\$3.95**

### SHOOTER'S BIBLE

**\$2.95**

COME IN AND SELECT FROM  
OVER 12,000 PAPERBACK TITLES

At The

**Spartan Bookstore**

CORNER ANN & MAC  
(Sorority Row)

## Only Slight Jump Seen

Only a slight increase in enrollment is expected fall term. The size of the new freshman class may increase by about 100 more than last fall, but the biggest factor in maintaining a high enrollment figure will be the number of returning sophomores and juniors, said Gordon A. Sabine, vice president in charge of special projects.

Present classroom space and

faculty will probably be sufficient to maintain the quality of instruction, Sabine said. The effect on enrollment of the recent rise in tuition costs remains to be seen, he said. "We'll have to wait and find out when we get to registration," Sabine said. "There are so many variable factors that it would be impossible to make a prediction of the enrollment figure."

## TOP HITS

In Stock

**DISC SHOP**

OPEN EVENINGS

## JACOBSON'S STORE HOURS

Monday, Tuesday, Thursday, Friday, Saturday

9:30 a.m. to 5:30 p.m.

Wednesdays: Noon to 9 p.m.

Shop All Day Saturday

\*\*\*

9:30 a.m. to 5:30 p.m.

## ENTIRE SUMMER STOCK OF SUMMER MERCHANDISE DRASTICALLY REDUCED



### Kayser's Cat-nappers

Of kitten-soft ornel® and brushed

nylon...charming sleepwear for

dorm or home. Bloomer pajamas

and shift gown have satin pussycat

appliques in each pocket. Red, aqua

or cream. Small, medium sizes..

**8.95 each.**



# She Represents 25,000 Michigan State Students

Let Your Advertising Message

*\*Tell Them You Welcome Them*

*\*Tell Them You Want Them As Customers*



## OPEN "WELCOME WEEK" SECTIONS

| SECTION F                          | SECTION D                                     | SECTION B                          | SECTION G                      | SECTION A          |
|------------------------------------|---|------------------------------------|--------------------------------|--------------------|
| SPORTS<br><b>CLOSED</b><br>CLOTHES | GREEK<br>SYSTEM &<br><b>CLOSED</b><br>CLOTHES | COLLEGES<br>OF M.S.U. &<br>CLOTHES | LANSING &<br>E LANSING<br>AREA | NEWS<br>&<br>MISC. |
| AUGUST 2                           | AUGUST 8                                      | AUGUST 18                          | AUGUST 21                      | AUGUST 27          |

**MICHIGAN  
STATE  
UNIVERSITY**



# STATE NEWS

341 STUDENT SERVICES BLDG. PHONES: 355-8255 & 355-8256