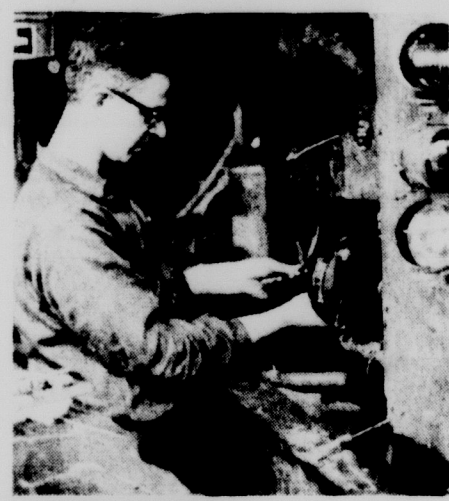




OLD MAN WINTER'S COMING--And when he does, MSU and East Lansing maintenance men will be ready for him. Here, several pieces of snow removal equipment are being tuned up and readied for use. Included among the metallic monsters are snow plows, Sno-



Gas, used for picking up piled snow, scrapers and others. The "UGH" shown on one of them could easily describe the attitude of the men toward the upcoming months of cold weather.



Photos by Ken Roberts

U.S. Asks Kenyatta To Save Missionary

Re-Evaluation Group Seeks Many Answers

(Editor's note: This is the last of a series on the student - government re-evaluation committee.)

By JO BUMBARGER
 State News AUSG Writer

Does student government need a legislative body? How closely should students work with faculty in planning administrative policy? Where should these students come from?

These are a few of the questions facing the student govern-

The 10-member group has found programs sponsored by on- and off-campus groups and similar men's and women's groups often overlap and compete with each other. The committee suggests that complex boards, such as Brody Board, may be advantageous.

It hopes to find a method to improve communication with off-campus students and points out that off-campus groups must work with parallel campus groups for maximum effectiveness.

The members question the necessity of a legislative body, but at the same time ask what will happen to the present functions of Student Congress if it is eliminated.

Size of the student body contributes to many problems. The committee points out that class

spirit is diminishing and suggests that perhaps it should be nourished on the complex level if it is to exist at all.

It finds that most programs of class councils, with the possible exception of Senior Council, are not necessarily class-oriented.

Student courts create a problem in a large university. Their chief value is peer pressure,

(continued on page 9)



JOMO KENYATTA

Mau Mau's Ex-Leader Gives Aid

LEOPOLDVILLE, The Congo (P-A) At the request of the United States, Prime Minister Jomo Kenyatta of Kenya urged the Congo rebels Tuesday to spare the life of U.S. missionary Dr. Paul Carlson "on humanitarian grounds."

Kenyatta acted quickly after receiving a message earlier in the day from Secretary of State Dean Rusk, who asked him to intercede with the rebel regime in Stanleyville. Carlson was due to die as an alleged spy at noon Monday but the rebel radio has never said whether the sentence was carried out.

Denying the medical missionary was a spy, the United States turned to Kenyatta as chairman of an African committee set up to try to end the civil war in the Congo.

Kenyatta sent a cable to Congolese rebel leader Christophe Gbenye in Stanleyville recalling that he had appealed Sunday for humane treatment for all civilians held in Stanleyville.

Then the African once jailed as a leader of the anti-white Mau Mau terrorists in the days of British rule in Kenya told Gbenye: "I have since received a report that an American missionary, Paul Carlson, is in danger of being executed on alleged charges of espionage. I appeal to you to save the life of this man on humanitarian grounds."

Carlson, 36, of Rolling Hills, Calif., took his wife and two children to the Central African Republic last September when the rebels went on rampage. Then he went back to his patients in the Congo jungles.

In Bangui, capital of the Central African Republic, Mrs. Carlson said her husband never had been a spy and "I am ready to testify categorically before anybody to this effect."

"He wanted above all to ease the miserable condition of the Congolese," she said. "He never worked for American government services. Besides, I don't see what he could have done as a spy in the little missionary village of Ouassolo where he lived."

She added that Carlson could have stayed in the Central African Republic "but he preferred to return to Ouassolo where his patients needed him."

When the rebel army of Gaston Soumialot occupied the village, the doctor was called before a people's tribunal and they wanted him to remain among them, Mrs. Carlson said. But the rebels decided to take Carlson to Stanleyville as a hostage.

Peace Corps Member Describes Hard Work

"Most people volunteer for the Peace Corps out of a basic idealism, but they find that there is more hard work than idealism."

Roger Burt, 25, a graduate of Iowa State, returned from India a year ago. Now he's one of several Peace Corps members here on campus to recruit new volunteers.

"When I joined the Peace Corps I was motivated by idealism," Burt said, "I became more realistic when I got to India and started to work with the people."

Burt was located in the northern part of India, in the state of Punjab.

"Our main interest was increasing the farmers' yield per acre. They don't have the vast amounts of land we do," he said. Starvation wasn't the main problem, according to Burt, but nutritional deficiency.

"One of the biggest problems was getting the farmers to use chemical fertilizer," he said. "They didn't understand it and fertilizer costs money."

Burt said that there was also the fear that a flood or heavy storm might wipe out their investment.

"We dealt with each farmer individually. We spent about a day every two weeks with each one and worked on his individual problems."

India needs an increase in protein content in their diets, according to Burt.

"They could get it by eating beef, but cattle are sacred. We don't attempt to change religious customs. We work with what is open to us."

Burt said the only real problem caused by the cattle is that they roam free and eat the crops.

"The Indian farmers appreciated our help," said Burt. "They felt that the Americans were willing to help while recog-

nizing their customs and respecting their personal dignity."

Burt said he felt that the two years he spent in India were very worthwhile.

"I think I'd like to get back into Peace Corps work after I finish with the Army," Burt said.

Peace Corps Placement Tests will be given Nov. 18-24, at 12:30 4 and 7 p.m., and on Saturday at 10 a.m. and 2 p.m.

Torchlight Procession To Honor JFK

MSU students will join the nation and the world in tribute to the late President Kennedy Sunday with a campus memorial torchlight procession.

The procession will be sponsored by West Shaw Hall, and all interested students are invited to participate, Bob Milne, Standish senior and hall president, said.

He emphasized that no attempt will be made to "recruit" participants.

A single torch representing the eternal flame over Kennedy's grave will lead the parade.

The procession will begin at 7:45 p.m. on the lawn south of the Auditorium. It will go up Farm Lane, around East Circle Drive, and will stop on the lawn north of Beaumont Tower, where a short speech will be given.

Milne said President John A. Hannah has been asked to give the speech, but it has not been confirmed that he will speak.

"I hope to have at least 300 students participate in the procession," he said.

Survey Finds Similar Rates

Cleaners Deny Price-Fixing

By LINDA MILLER
 State News Staff Writer

Prices for dry cleaning in East Lansing are strikingly similar, although the Lansing Dry Clean-

ers Association denies price-fixing of any sort.

A recent State News survey of six dry cleaners in East Lansing indicates that prices on most items are the same or within a few cents of each other.

In cases where cleaners were situated next to each other or only a block away, prices were the same on nearly every item.

A seventh cleaners' rates are about half what the other six charge. Its owner is the only one of the seven who has not been active in the Lansing Association.

Phil Gill, president of the Association, said that any charge of price-fixing by his organization is "simply not true."

"We stressed at our last meeting that each individual could charge as he so desired," Gill pointed out that federal law prohibits such price fixing.

All six dry cleaners upped their prices just before Michigan State's Fall term began.

One owner said he did so because another owner called him and told him everyone else was going up and he ought to also. "I'm glad prices went up," he said. "Now I can use better equipment and do a finer job."

Another owner indicated that prices went up partly because Michigan's minimum wage law jumped to \$1.25 per hour.

"Laundries have been notor-

ious in the past for low wages," he said.

Deware Cleaners, 122 Stoddard, charges from 23 cents for men's plain shirts to \$1 for coats, suits and dresses. Its owner said he had not upped prices since 1946 although he had been asked to do so by other dry cleaners. He

(continued on page 4)

Baltimore Quads Born; African Begets Quints

BALTIMORE (P-A) The wife of a U.S. Army paratrooper doubled the size of her family to eight in an overnight visit from the stork, and the shaken father of the new quadruplets made a decision Tuesday.

"I quit already," declared Pvt. Angel Reyes, 28.

Reyes' 35-year-old wife, Betty, gave birth to three girls and a boy during a 17-minute span in Sinai Hospital. A hospital official said all were doing fine.

Word of the Baltimore quadruplet birth came just after news that quintuplets were born Monday across the Atlantic in Mozambique, East Africa. Dr. Julio Fernandes said he delivered them--four boys and a girl--in Zavala Hospital in Hambane District.

Fernandes said the quintuplets, born to Clara Mantagua, all had a good chance of survival. Mrs. Mantagua and her husband,

Felizberto, also have two sons.

The medical profession estimates quintuplets occur once in 54 million births, quadruplets once in 600,000 to 700,000.

Reyes was home on emergency leave from Ft. Bragg, N.C., when he was called at 1 a.m. and told of his four family additions.

"I got all shook up," he said. As a cook with the 82nd Airborne Division he makes \$232 a month--\$105 base pay and \$127 for three or more dependents--plus \$55 in jump pay.

Since enlisting at 18 in Puerto Rico, he has made 35 jumps but now says that's all over, too. "I ain't making any more," he said.

When doctors told him four months ago he might expect a multiple birth, Reyes was skeptical. "I didn't believe it until the Doc showed me the X-rays a month ago."

MSU Institutes New International Office

MSU has established an Office of International Extension, to be directed by Sheldon Cherney, it was announced Tuesday.

The new office responsible for the development of programs of international significance, was established by the MSU Cooperative Extension Service.

It is part of a multi-dimensional Continuing Education Service and is also affiliated with the Office of International Programs at Michigan State.

Cherney, director of the office, was former associate coordinator of the Nigeria Program and a consultant in continuing education. He joined MSU in 1956 after teaching at the General Motors Institute and Phoenix, Ariz., College.

Training programs of inter-

national scope will be initiated by the office for agricultural and industrial organizations, the Peace Corps and faculty going overseas on technical assistance programs.

Conferences and informal courses on international subjects will be started in cooperation with MSU faculty and professional groups.

The office will also assist in the development of overseas exchange study and research programs for MSU students.

Activities currently under way include the American Language and Education Center (AMLEC) Program, headed by Fredric Mortimore, and the MSU-University of Nigeria Exchange Program (MINEX).

Last summer 31 Michigan State students participated in a five week credit course in Nigeria. This year Michigan State will host a group of University of Nigeria students for 10 weeks.

In initiating and developing such programs, Cherney said, the office has worked closely with the MSU African, Asian and Latin American Study Centers.

Federal Jury Indicts Drug Developers

CHICAGO (P-A) Dr. Andrew C. Ivy, internationally known physiologist who championed Krebiozen as a cancer-fighting agent, was indicted with several other persons and institutions Tuesday on charges of mail fraud, conspiracy, mislabeling and making false statements about the drug.

A federal grand jury handed down a 49-count indictment against Ivy and other promoters of the substance the government contends is worthless as a cancer-arresting drug.

Ivy, 71, a research professor of biochemistry at Roosevelt University and a former vice president of the University of Illinois, was named in 44 counts that carry a maximum penalty, upon conviction, of 150 years imprisonment and \$395,000 fine.

Others indicted were Dr. Stevan Durovic, 59, who claims he discovered the drug; his brother, Marko, 64, a lawyer; Dr. William F.P. Phillips, 52, as associate of the Krebiozen Research Foundation; the Foundation, and Promak Laboratories, where the substance was packaged. All are of Chicago.



FIX BAYONETS--Standard equipment for ROTC war games are these rifles complete with bayonets. They are used as part of the ROTC training program. See story on page 4.

East Lansing's Police Move Into New Home

By JOHN ELMER
 State News Staff Writer

East Lansing police have moved into their new home in the \$75,000 City Hall addition.

Their section of new building, fronting on Park Lane, is basically completed, but the remainder will not be ready for other city departments until next month.

Officers may have to work around construction men for a while, but they won't mind. It will seem like child's play compared to the obstacle course they have faced every day in their old quarters.

Police headquarters has been lodged in the old City Hall building, where the total floor area amounted to about 300 square feet, including much fixed equipment and unusable hall and stair space. Now the department will have possibly four to five times that area, with many long needed innovations.

Included in the new police set-up is a separate radio room, a driver's license bureau office, offices for Chief Charles F. Perz and his staff, a pistol range, a locker room, an ammunition loading room, an interrogation area, and of course, several modern jail cells now "open for occupancy."

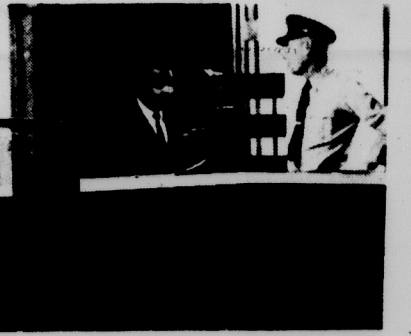
One reason for the early move made by the Police Department is so that remodeling can begin on the old building, into which the Fire Department will expand from their equally cramped second-floor area.

All city departments will be housed in the building when it is complete except for the engineering staff, which will occupy another new building between Park Lane Road and old M-58.

Funds for construction of the two new buildings were provided by a \$845,000 bond issue East Lansing voters approved in April, 1963.



POLICE ON THE MOVE--The bars in the picture at left do not mean that East Lansing is repelling its dry laws, only that the police have a new home. Located in the new city hall on Abbott Road, the station has all the facilities normally found in a law-enforce-



ment office. These include fingerprinting equipment, a driver's license examination bureau, a front desk for receiving "visitors" and a card file.

Photos by Ken Roberts

EDITORIALS

The Spiting Irish

Michigan State and its hard-working football team may have suffered a humiliating 34-7 defeat to the Fighting Irish of Notre Dame last Saturday, but the University won a moral victory that is not to be discounted.

Some Notre Dame supporters have a well-founded reputation for poor sportsmanship and an unfriendly, vengeful attitude toward its athletic opposition.

The behavior of a group of Notre Dame fans last weekend in attacking the Michigan State Marching Band even after the Irish had won the game was a deplorable example of behavior that should not be allowed to continue.

Band Director Leonard Falcone said Monday he had recommended that the MSU band not return to Notre Dame unless a significant change in attitude promises a better reception next year.

Relations between MSU and Notre Dame, which looked at first as though they might remain pretty dim, were helped out when the Rev. Charles McCarragher, Notre Dame vice president for student affairs, late Monday wired Michigan State an apology for the incident.

MSU and Notre Dame have been playing each other too long for a single incident, no matter how upsetting, to have any permanent effect on the rivalry.

Notre Dame officials would do

well, however, to consider the attitude of their students and fans toward intercollegiate athletics.

This is not the first time Michigan State has been offended by the behavior of Notre Dame fans. Michigan State is not the only school that has complained about their behavior.

Moreover, the spontaneous incident Saturday is not the only offense the Irish rendered MSU this year. An obviously well-planned and executed raid on the MSU campus late last week left blue and green paint markings on several campus buildings, on the Sparty statue and on the directory sign near the administration building.

The overall picture of Irish sportsmanship, or lack of it, is not a pleasing one.

The Spartan Marching Band may or may not return to Notre Dame next year. The rivalry between MSU and ND may or may not continue to be cordial, but it will remain a rivalry.

Notre Dame officials, as they survey the damage to their inter-university relations, should attempt to find ways to educate their students and other fans in the fundamental rules of sportsmanship and athletic rivalries.

Notre Dame seems to face an internal problem of attitude-improvement that is greater than the current breach between that school and MSU.

Bicyclists Astray Bring Ticket Heyday

Campus police have been attempting to enforce the University's bicycle regulations with more than usual energy this term. The reason seems to be that students are violating the rules with more than usual energy.

Lt. Adam Zutaut, who is to become head of the campus police when Lt. Allen Andrews leaves MSU later this year, said the period of warning and ticketing bicycle violators has gone on longer this year than previously. Students are not learning the rules as fast as they usually do, he said.

The bicycle regulations, Zutaut said, are simple enough to learn. Copies of them have been posted in every dormitory precinct on campus. Every student gets a copy of the rules when he registers his bike.

"Most of the kids just don't read them. I believe," Zutaut said.

Zutaut said that from the opening of school until the end of

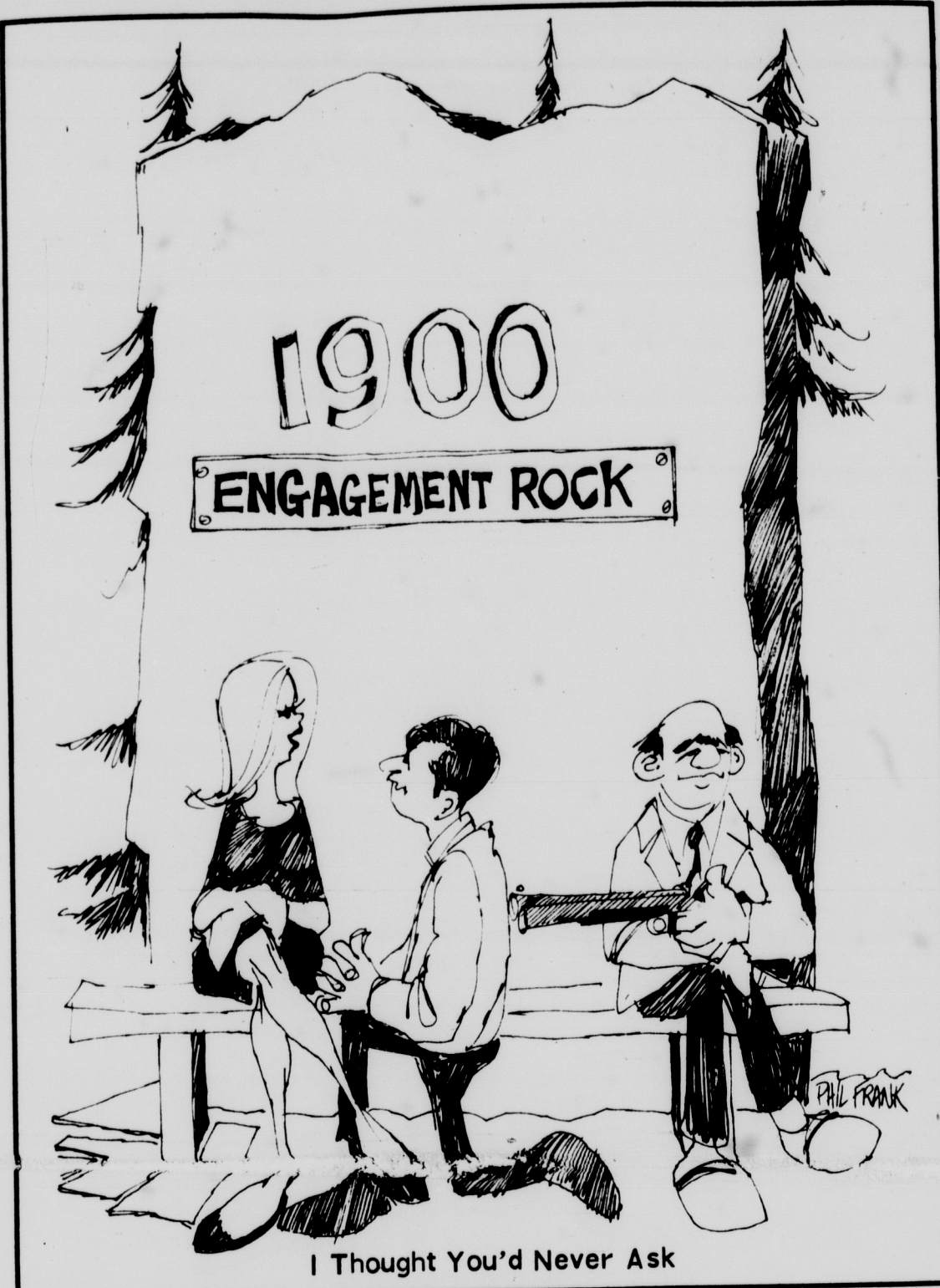
October campus police stopped 169 bicycle violators.

Students may resent being ticketed for violating bike regulations and may feel they are cheated when police officers stop at a particularly dangerous area and give out a series of tickets all for the same violation.

But this is necessary if the regulations are to be enforced. The regulations must be enforced, particularly until bicycle paths are built in those parts of the campus where they are still lacking.

Zutaut said the number of bicycle-bicycle and bicycle-pedestrian injuries on campus appears to have increased this year. The number of bicycle-automobile accidents may also be up in view of the increase in the number of registered bikes.

"When a car hits a bike," Zutaut said, "you know who gets hurt. It's not the driver of the car."



I Thought You'd Never Ask

Letters To The Editor

To Defend Sparty's Honor

To the Editor:

As many of my fellow students have already heard, our Sparty boasted a new paint job last week, this time, courtesy of a group from Notre Dame.

The artistic work was almost complete, covering most of Sparty and part of his foundation in bright blue, and the removal required several man-hours on the part of our grounds-keeping staff and their apparatus.

Now, as a slight matter of in-

terest, where were our campus police at the time of this fiasco? This is not the first time that this has happened; it came as no great surprise, but couldn't it have been prevented? Couldn't these delinquent "college students" have been apprehended? They should have been, but they weren't!

In the Red Cedar Report of Nov. 12 I found a line that reads, "Now that we have the 'Meter Maids' to take care of parking tickets the regular campus police have more time for their important duties, like arresting the guys molesting the ducks."

It seemed funny on Nov. 12, but on Nov. 13 there was suddenly truth in the statement. Is our campus to be subject to the practical and impractical pranks of just anyone who comes along? How many times will our school be taken advantage of in such a dastardly manner as this?

Let me say that I, by no means whatsoever, seek revenge for this wrongdoing, and I sincerely hope that my fellow students can find it in their hearts to forgive these "night crawlers" from Notre Dame for this atrocity.

However, I do believe that a few thousand respectfully submitted letters of protest to the president of Notre Dame would be in order at this time.

I strongly urge you, my fellow students, to express your feelings over this incident in writing, not action! Let us not revert to the tactics of these individuals.

Open Letter

To Kirby Hanson

Dear Kirby:

Once in a great while there comes a person who brings a community program to an admirably high pitch.

We are convinced you are such a person in connection with the Red Cross Blood Drive of November 2 through 6 at Michigan State University.

If the ease and efficiency with which you appeared to handle this task is typical of you, you will be a success in any future endeavor.

Red Cross offers you and Alpha Phi Omega thanks for a job well done and congratulations for a personal service of which you can be proud.

My respect and admiration to you.

Don Case, chairman

Blood Program Committee

Fisheries Club
Applauds Letter

To the Editor:

We would like to endorse wholeheartedly the letter of Miss Phyllis Dall. It is gratifying to note that some members of the student body are aware of the woodlots, and the possible dangers involved if they were destroyed.

Our woodlots are as much a part of MSU as Beaumont Tower or Spartan Stadium. Unfortunately, many do not see them in this light, but regard them as merely minor hindrances to campus construction.

Sometimes, one wonders if the University has a right to boast of the many varieties of plant life it has when it is so active in the destruction of the native growth.

It would seem at times that the goal of the campus planners is 4,000 acres of treeless cement. While this may please the local cement companies, it is an extremely depressing prospect from the standpoint of the average student, and especially from the view of conservation specialists.

We urge that the University display at least a minimum of concern when it appears necessary to destroy some natural growth. It is only too true that a woodlot may not be replaced, and it is something that our campus empire builders should consider.



STATE NEWS

Member Associated Press, United Press International, Inland Daily Press Association, Associated Collegiate Press, Michigan Press Association.

Published every class day throughout fall, winter and spring terms and twice weekly summer term by the students of Michigan State University.

Second class postage paid at East Lansing, Michigan. Editorial and business offices at 341 Student Services Building, Michigan State University, East Lansing, Michigan.

Editor John VanGieson
Advertising Manager Charles C. Wells
Campus Editor Liz Hyman
Wire Editor Hugh J. Leach
Sports Editor Richard Schwartz
Ass't. Advertising Manager Ken Hoffman
..... Marcy Rosen
Photography Advisor Dave Jaehnig
Circulation Manager Bill Marshall
Night Editor Leslie Goldstone
Copydesk Advisor Henry Price
News Advisor Richard E. Hansen
Editorial Editors Susan Filson, Michael Kindman

Film Society

Editor's Note: A letter which appeared in last Thursday's State News asked students interested in a small film society forming in Lansing to contact Frank J. Leahy, Mr. Leahy's address is 823 Cleveland St., Lansing. His phone is 485-3912.

'In Loco Parentis-Hood'

Children
Or Adults?

To the Editor:

A question for Mr. Patrick Smith, assistant director of off-campus housing:

The regulations and restrictions which govern this University coincide with the popular belief that our generation is "tied much too long to our mother's apron strings."

Are students over 21 years of age and living off campus to be treated as children who are still attached to their parents' "apron strings," or are we to be regarded as responsible young adults who are mature enough to make our own decisions in such regulated areas as "no alcoholic beverages in any living units" or "no members of the opposite sex in living quarters at any time."

Are these restrictions for children or adults? Just what is our position, Mr. Smith? Sending University inspectors into our living quarters or sending "informative" letters home to our parents can hardly reflect an image of adults!

It has been said that the true test of a parent's love and respect for their children comes at the time when they realize that their children have crossed the line from childhood into the adult world and are ready to be held on equal basis with themselves—independent, able to accept responsibilities, and adult in every sense of the word.

Does the University should take a lesson in Parenthood!

Karl A. Stoerker
Off-campus resident

Questions
Housing Rule

To the Editor:

The following is a copy of a letter sent to the University Off-Campus Housing Office.

To Whom It May Concern:

As a 23 year old adult, I am deeply resentful of the University administration's determination to treat me like a child.

I am referring to a letter sent by your office to my parents, which states, in part: "The present housing regulations permit any student, male or female, at least 21 years of age by the last day of official registration, to live in any type of housing he or she chooses, provided that you give your approval."

I am "only" 23; what about the 40 or 50 year old student? Must he or she receive his parent's permission to live off-campus? Must both wife and husband obtain their respective parents' approval to live off-campus?

The above questions are meant solely to emphasize the absurdity of this "regulation;" it should in no way detract from the fact that a single, over-21 year old male (or female), has an absolute legal right to determine his own place of residence.

Thus I must inform you that no parental permission slip will be returned to your office. I regard this to be not a manifestation of reckless rebellion, but a well-considered demonstration against a ridiculous bureaucratic encroachment upon my civil liberties.

Paul M. Schiff

Film Series Tainted By Shorts

To the Editor:

I would like to comment on the singular lack of judgment displayed by those responsible for arranging the programs of the University foreign film series.

For example: last Friday night, I went to see "The Good Soldier Schweik," entered theater, settled myself expectantly in my seat, and for 25 minutes watched a short subject called "With Their Eyes on the Stars," which featured such things as John Glenn gazing heavenward while canned patriotic music blared in the background. It was in general an insult to the intelligence of any mature audience.

And this is not the exception in this series but the rule. I recall with horror to this day going to see a highly praised Indian film and sitting through a half-hour travelogue about the wonders of motoring through Merry England.

"Sports Spectacular," inane travelogues, propaganda films—if a short subject is available that will utterly alienate and disgust an intelligent filmgoer it will be found and shown.

Does it never occur to those in charge that an audience that has come to watch a presumably adult foreign film is unlikely to appreciate a half-hour appetizer of cinematic pablum?

Until the situation is improved, one can only try to arrive late and hope that a decent seat will still be left somewhere. Or stay away entirely.

Laurence Tate
Sault Ste. Marie sophomore

Election Renewed Faith

To the Editor:

The recent election of Lyndon B. Johnson has given me new hope in America.

I am sure now that Anyone can become President of the United States.

I would mention HHH but I have just eaten.

John Graafmeyer
Euclid, Ohio, freshman

Electoral College System Under Fire

By CARLO SALZANO
United Press International

Talk of changing or doing away with the electoral college system of electing presidents has cropped up again, as it has after each general election during the past 150 years.

During all those years, critics have been unable to put through Congress any constitutional change, and unless sentiment for change builds up a lot more momentum, none is expected in the near future.

Just what is the Electoral College, and what are some of the proposed changes?

The College is composed of a group of presidential electors

selected by the voters at the general election. Voters actually select electors, not a president. Members of the College do the actual selecting of the president. This time they'll do it Dec. 14 when they assemble at each of the 50 state capitals.

The number of electors each state has depends on the number of members of Congress it has. For example, New York state, with 41 House members and two Senators, has 43 votes. The District of Columbia, voting for president for the first time this year, has no Congressional delegation but does have three electoral votes.

Under the Constitution, each

elector casts his ballot for his choice. It doesn't have to be for the presidential candidate who carried his state. The sealed ballots are mailed Jan. 6.

If all goes according to schedule, President Johnson will receive 486 votes and Republican Senator Barry Goldwater 52. But there's nothing in the constitution that says electors have to vote for either candidate, despite the popular vote taken Nov. 3.

Under the electoral system—and this is among arguments advanced by critics—it's possible for a candidate to receive fewer popular votes than his opponent but still win the election. This happened at least twice—in 1876 and 1888.

There have been various reform proposals advanced over the years. A few of the ones expected to be re-introduced in January call for the straight popular vote, the district plan, or the proportional plan.

The argument against using the popular vote as a basis for electing a president maintains it would obliterate traditional state boundaries and lead to greater federal controls over all elections.

Under the other two proposals, a modified version of the Electoral College would be adopted. The district plan calls for electors to be chosen on the basis of the popular vote in each Congressional district, plus two statewide electors. But opponents maintain that this would perpetuate existing disparities in malapportioned districts.

Points Of View Wanted

All readers of the State News—students, faculty members or any others—are invited to submit "Point of View" columns for publication, as well as letters to the editor.

These columns may be written on any subject and at any reasonable length. We reserve the right to select or edit them if it is necessary to do so.

World News at a Glance



From Our Wire Services

Detroit Publishers Reject Union Suggestion

DETROIT—The publishers of Detroit's two newspapers Tuesday turned down a suggestion by the president of the striking pressmen to inspect new eight-unit presses at the Detroit News.

The pressmen are on strike at the News over manning of the presses.

The publishers—Peter Clark of the Detroit News and Lee Hills of the Detroit Free Press—suggested that the union name qualified journeymen from its own ranks to make a joint study with qualified management representatives to determine the proper number of men required on the eight-unit presses.

Cuban Guerrilla Leader Slain In Venezuela

CARACAS, Venezuela—A Cuban guerrilla leader, Raul Ramon Rubio Valdez, was among about 10 guerrillas slain in a fight with government troops in the state of Falcon, the defense ministry said Tuesday.

"He was identified as a Cuban citizen and was considered one of the leaders of the bands," said Gen. Ramon Florencio Gomez, defense minister. "Near his body was found a valise containing compromising documents."

The minister declined to give reporters other details.

Communists Reported Among Marchers

WASHINGTON—About 200 Communists, who tried to hide their party connections, were among the 200,000 Negroes and whites in last year's civil rights march on Washington, Assistant FBI Director William C. Sullivan said Tuesday.

Sullivan cited this as an example of how the Communists, in an effort "to divide and weaken this nation from within," put exploitation of the civil rights situation foremost.

Second Rail Union Agrees On Wage Increase

CHICAGO—A second union of railroad operating workers reached an agreement on a wage increase Tuesday while federal mediators sought to stave off a strike threatened by non-operating personnel.

The tentative agreement involving the Brotherhood of Locomotive Firemen and Enginemen was similar to that announced Monday by the Brotherhood of Railroad Trainmen except for retroactivity dates.

Citizens Committee Has Had Enough

DETROIT—A citizens committee for community affairs—made up of several leading Detroit area businessmen and civic leaders—is urging a telephone and letter writing campaign by residents of Detroit area to show their dissatisfaction with the city's four-month old newspaper strike.

The committee purchased full-page advertisements in 10 South-eastern Michigan newspapers calling for an end to the strike against the Detroit News and the Detroit Free Press.

The advertisement addresses the Detroit Newspaper Publishers Association and local 13 of the striking pressmen in large bold type by saying—"Gentlemen we have had enough."

HUAC Asked To Investigate Minutemen

WASHINGTON—The House Committee on Un-American Activities was asked Tuesday by a member of Congress to investigate the organization known as the Minutemen.

Rep. Charles S. Joelson, D-N.J., said the Minutemen is a secret, armed organization that favors "forcing governmental policies by violent means."

In my opinion nothing can be more un-American," then that Joelson said in a letter to Rep. Edwin E. Willis, D-La., chairman of the committee.

Career Diplomat Reportedly Gets Laos Post

WASHINGTON—There were reports that President Lyndon Johnson has picked 40-year-old career diplomat William H. Sullivan as the new ambassador to Laos. The White House would neither confirm nor deny them.

But the appointment was generally accepted in diplomatic circles as one of Washington's worst kept secrets.

LBJ To Eat Turkey Instead Of Crow

WASHINGTON—President Johnson carefully eyed a 40-pound tom turkey bearing a tag, "Good eating Mr. President."

"I hadn't been quite sure what I'd be eating Thanksgiving," he commented. "I'm glad I can eat turkey instead of crow."

The big six-month-old bronze turkey was presented to Johnson by officials of the Poultry and Egg National Board and the National Turkey Federation, in a ceremony in the White House flower garden.

O.W. Holmes Presentation Set For Fairchild Tonight

In the style made popular by Hal Holbrook's "Mark Twain," actor William Paterson will present a dramatic biography of Oliver Wendell Holmes Jr., at 8:15 tonight in Fairchild.

In "A Profile of Holmes" Paterson, director of the Cleveland Play House, reminisces as an elderly Holmes, using the former U.S. Supreme Court justice's own words.

Paterson is the second actor to present a dramatic biography in the Lecture-Concert Series.

Last year Hal Holbrook appeared as Mark Twain before a full house on campus.

"There are only two other noted actors performing biographies at present, England's Emlyn Williams as Charles Dickens and Hal Holbrook as Mark Twain," Wilson B. Paul, director of the Lecture-Concert Series, said.

Admission to "A Profile of Holmes" is \$1 or a Lecture-Concert Series season ticket. Students must show their IDs.

Voting Analysis

'64 Candidates Called Unpopular

This past election marks an election in which the voters have had to choose between two of the most unpopular candidates that have run for the presidency in years, said Warren Miller, of the University of Michigan's survey research center.

Miller, a recognized authority on American voting behavior, discussed the surveys and poll in American political life and the resulting predictions in the election of 1964.

"There are two kinds of application for methods and technique in the analysis of American vot-

ing behavior," he said. "In the past there has been so much data that no one has known how to handle it, but today we have computers on election night as well as the data collected from current studies on previous elections," he said.

Miller discussed the CBS Voter Profile Analysis.

"The basic point for VPA has been that one does find a reasonable technique for sampling with the use of computers."

The problem of selection of the best possible precincts, is based on the use of information covering past history of the precincts.

Travel Talks To Be Heard

"Children Around the World" is the theme of the Child Development and Teaching Club meeting tonight in the laboratory preschool at 7:30.

All majors are invited to hear staff members speak on their summer travel experiences.

Faculty members speaking will be Miss Bernice Borgman, who visited Scandinavian and European countries, and Mrs. Vera Borosage, who spent a month vacationing and observing the children of Mexico.

Mrs. Huda Giddens traveled to Okinawa, and Miss Karen Vogt toured Japan with an experi-

enced with a Japanese family for another month.

Money ordinarily used for refreshments at the meeting will be donated to UNICEF.

The toys that the faculty collected from these countries will be displayed in the Home Economics Building this week.

Queen Does Christening

MSU's 1964 homecoming queen, Janis N. Flanders helped christen the S.E.S. Inca Tuesday in ceremonies at the Lansing Boat Club.

Also participating were James Martini, skipper of the ship, Walter Lindell, who donated the boat, and Mayor Willard I. Bowerman Jr. of Lansing.

The Inca, second largest boat belonging to the Sea Scouts' fleet, will be used on the Grand River for training of Sea Explorer Scouts and for giving rides to interested people.

An open house will be held Saturday morning and Sunday afternoon at the Lansing Boat Club. The public is invited for free rides on either the Inca or the Mosquito. Those interested should come dressed to wear life vests.

The central base lines from which party identification is formed are the characteristics unique to each election, and the main factor in this election was "the people's choice," he said.

Miller compared the 1952 Eisenhower-Stevenson election to the 1964 election figures.

"The figures of the 1952 election were almost identical to those of the 1964 election but with one major difference. Characteristic of the 1952 Eisenhower landslide was the "positive" vote. In 1964, over half of the Republicans voted against Goldwater, and over half the vote for Goldwater was a vote against Johnson."

On WKAR

10:05 a.m.—The Music Room: RIETH: Sonata. All: Antica; THOMSON: Canabile and Sonata No. 4; BERGER: Intermezzo and Bagatelle.

2 p.m.—Autumn Serenade: BORODIN: Symphony No. 2; GRIEG: Piano Concerto; R. STRALSS: Don Juan; PROKOFIEV: Visions Fugitive; TCHAIKOVSKY: Romeo and Juliet.

8 p.m.—Concert Hall (F.M. only)—WAGNER: Prelude to "Lohengrin"; STRAVINSKY: Circus Polka; MAHLER: Symphony No. 3.

Carlson's Wife: Michigan Native

MENOMINEE—The wife of 36-year-old Dr. Paul Carlson—the American missionary sentenced to die as a spy by the Congolese rebels—is a Menominee, Mich., native.

Carlson married the former Lois Lindblom. They have two children, 9-year-old Wayne, and seven-year-old Linette.



ELBERT R. SLAUGHTER

Christian Science Film Set

The Christian Science movie "Where Are You Going?" will be shown at 7:15 p.m. Thursday in the Union Ballroom.

Elbert R. Slaughter will lecture on the journey to "spiritual reality" which must take place within each person. The movie is sponsored by the campus Christian Science organization.

A resident of Dallas, Texas, Slaughter is touring the country as a member of the Board of Lectureship of The First Church of Christ Scientist in Boston, Mass.

He has attended Southern Methodist University and was a savings and loan vice president until 1945, when he resigned to devote full time to Christian Science work.

Address Set On Ryukyus

Shannon McCune, consultant to the president of the University of Illinois, will speak in the Student Services Lounge Wednesday at 7 p.m.

Sponsored by the Asian Studies Center and the Ryukyus Project, McCune will talk on "Western Scholarship in the Ryukyus Islands."

MSU now has a five-man overseas advisory team working with the University of Ryukyus on Okinawa to develop an institution similar to U.S. land-grant colleges.

McCune, the first U.S. civil administrator for the Ryukyus project, assisted MSU advisors during his stay from 1962 to Feb. 1964 on Okinawa.

Faculty Has Java A La Academists

HOLLAND (UPI)—The Hope College faculty is having free coffee on the students for the rest of the week.

The faculty and student body had a contest on which would give the most blood to the blood bank Monday.

Thirty-one members of the faculty contributed a percentage of 16.2 while 209 students gave blood, a percentage of 13.7.



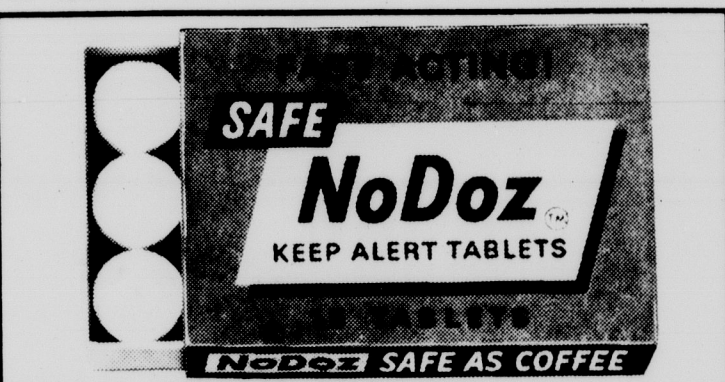
...with
an eye
to Glamour

Eyewear at Wallace's is always chosen to allow you to look your best while seeing your best. Wonderful selection at either convenient location.

eye examinations by DR. W. C. JENSEN, registered optometrist

WALLACE OPTICIANS

3040 Vine (Opposite Frandor) Phone LV 9-2774
also offices downtown at 107 N. Washington.
Dr. R.C. Jones and Dr. B.C. Bussard, registered optometrists



THE SAFE WAY to stay alert without harmful stimulants

NoDoz™ keeps you mentally alert with the same safe refresher found in coffee. Yet NoDoz is faster, handier, more reliable. Absolutely not habit-forming. Next time monotony makes you feel drowsy while studying, working or driving, do as millions do... perk up with safe, effective NoDoz—Keep Alert Tablets.

Another fine product of Grove Laboratories

M.S.U. Book Store M.S.U. Book Store M.S.U. Book Store M.S.U. Book Store M.S.U. Book

FOR YOUR
CONVENIENCE

Wednesday and Thursday Until

WE'LL
BE
OPEN

9

MSU BOOK
STORE

Located in the Center
for International Relations



M.S.U. Book Store M.S.U. Book Store M.S.U. Book Store M.S.U. Book Store M.S.U. Book

HI!
I'm Archy McDonald
HUNGRY?
Have a Treat!

Go to
McDonald's

McDonald's

Lansing
4245 W. Saginaw
4700 S. Cedar
2120 N. Larch

East Lansing
1 Blk. East of Campus
2 Blks. West of Union

STATE DISCOUNT

Cosmetics & Vitamins

619 E. Grand River

Across From Student Services

- Daily 9 a.m. – 6 p.m.
- Wed. 9 a.m. – 9:00 p.m.

COUPON

Aqua Net

Reg. \$2.00

59¢

Limit one

COUPON

Tame Cream Rinse

Reg. \$1.00

69¢

Limit One

COUPON

Spray Starch

Reg. 89¢

49¢

Limit one

COUPON

Anahist Cold Caps

Reg. \$1.00

69¢

Limit One

COUPON

Personna

Reg. 79¢

49¢

Limit one

COUPON

Trivene Nose Drops

Reg. 98¢

69¢

Limit one

COUPON

GE Flash Bulbs AG1

Reg. \$1.19

89¢

Limit one

COUPON

Lavoris

Reg. 95¢

69¢

Limit one

COUPON

Glycerine & Rose Water Tube

Reg. 69¢

39¢

Limit one

COUPON

Chap Stick

Reg. 39¢

29¢

Limit one

COUPON

Ambush Cologne

Reg. \$2.25

\$2.25

Limit one

COUPON

Hypnotique Spray Cologne

Reg. \$2.09

\$2.09

Limit one

COUPON

Faberge Bath Powder

Reg. \$2.59

\$2.59

Limit one

Coupons good through Nov. 23

Chanukah Candles
and other Novelties.

Sun. Mornings

9-11

at the

Sharry Zedak Temple
Penn. Ave., Lansing



MONKEYING AROUND--It has been said that an army travels on its stomach, but this ROTC cadet apparently heard it backwards. So he's traveling on his back, monkey-style, between trees.



STICK-TO-IT-IVENESS--That's what these ROTC war games require. Above left, a cadet buries a bayonet



point in a target set up behind Demonstration Hall. The cadet above right is learning how to cross a fence the hard way. Photos by Jim Hile and Tom Pozarycki



JOIN THE CLUB--An instructor obviously forgot to tell this cadet the proper way to use a rifle, but he seems to be doing a pretty good job of improvising. At least this method is better than going to the trouble of installing a silencer.

Price Survey

(continued from page 1) does not advertise, or have a sign on the front of his building as the other six do.

College Cleaners, 626 W. Michigan Ave., and Crest Cleaners, 620 W. Michigan Ave., both range in prices from 29 cents for plain shirts to \$1.50 for dresses.

Campus Cleaners, 547 E. Grand River Ave., are also in the same price range. However, Campus charges 29 cents for

plain shirts, Louis 30 cents. Lansing Laundry and Dry Cleaners, 112 W. Grand River Ave., is having a special of \$1.29 this month on plain dresses.

Time Cleaners, 515 W. Grand River Ave., also falls in the same price category.

None of the owners or managers said that price fixing was being practiced in East Lansing. Most of them pointed out that they had specials which varied from other companies prices.

Patrols Shoot Blanks In War Game

ROTC Squad Assaults Pine Ridge In Realistic Daily Maneuver Drills

By JAMES STERBA
State News Staff Writer

A stiff breeze blew sand and dust through leafless scrubs and tall silent pines, as men of the aggressor squad dug into position on the crest of the hill. Meanwhile, the reconnaissance patrol slipped ammunition into their bayoneted rifles 100 yards to the west, and spread out into assault positions.

"All right men, move out," the squad leader barked, motioning with his right hand. Pine needles dug into the sand beneath their feet as the patrol moved up the gullied trail toward the objective.

The right half of the squad, called the fire element, moved cautiously over the first ridges, jogging between trees. Ground cover was scarce on this side of the trail.

The maneuver element on the left side of the trail pushed aside scrub branches as it moved through the low, densely covered area.

As the patrol's lead man reached the top of the second hill two shots rang out from the aggressors on the objective hill.

"Hit it, hit it," the squad leader yelled as the fire team took positions in a gully on the right and returned the fire.

The maneuver squad slithered between bushes and charged to the top of the third hill, their rifles barking at the enemy.

The aggressors, meanwhile, ceased fire and waited for the patrol to charge.

"OK. Move out, move out,"

Trade Board Invites Dike

George K. Dike, extension specialist in MSU's Department of Agricultural Economics, has been invited to serve as an educational consultant to the Chicago Board of Trade.

In this capacity, he will be one of six educators who advise the Board of Trade on educational activities.

These include scholarships to students of marketing, seminars on future trading for grain merchants and the publication of literature on grain marketing. As an extension specialist, Dike works closely with agricultural marketing firms in Michigan. He also teaches two courses in MSU's College of Agriculture.

came the command through the shots, dust and wind.

The patrol charged the hill, screaming, shouting and wielding their bayonets.

"Ah, gahh," A bayonet ripped a straw dummy on the slope and it fell to the ground. The air was filled with fire. Blast flames spit out the barrels of the aggressor rifles as they made a hasty retreat.

The patrol made a final rush of the hill, hit the dirt and fired shots at the retreating aggressors.

Then they immediately regrouped and began digging in to secure the hill.

So far there have been no casualties in the MSU-ROTC daily assault of Pine Ridge in back of Demonstration Hall.

Home Game 'Mum' Sales Bring Floriculture Earnings

Thirty-six students, members of the Floriculture Forum, earned nearly \$1,500 by selling mums at the four home football games, according to Gary Falkenstein, Sturgis junior and president of the Forum.

"The members decorate and do all the selling," Falkenstein said. "Each student receives 10 per cent of what he sold and the rest goes into the treasury."

"The Floriculture Forum project will pay for a field trip to New York City during spring vacation," he said. "The annual trip includes stops along the way to study florist shops and greenhouses."

In the two previous years the Forum has visited St. Louis and Buffalo.

"Thirty-three hundred flowers were sold this year," Falkenstein said. "The largest sale was at homecoming with 1,200 being sold."

Other activities this year will include a campus flower show and

In fact, the assault is only a drill in maneuvering in which all army ROTC units will take part during fall term.

"This type of training is new to MSU," said Major James L. McClain, director of the drills. To make the drill as realistic as possible, blanks are used in the rifles.

During Fall term more than 500 students will assault the hill which Maj. McClain calls perfect for this type of drill.

"This hill with its gullies and ridges offers an ideal spot for patrol maneuverings," McClain said. "The left side is a clear high area where half the squad can dig in and pin the enemy down while the other half the squad can move in the low area and flank the enemy."

"I know of no other ROTC units using this type of drill," he said.

Stocking Club Fills Socks

The Red Stocking Club dance can turn into a reality the dream of a sock full of toys for every child in the Lansing area.

The annual dance, sponsored by Michigan state employees, is slated for Dec. 12, at the Lansing Civic Center.

The proceeds are to be used by Lansing area charities to see that every child has a toy for Christmas.

It is hoped that attendance from the college students, as well as from others in this general area, will make the party the huge success it has been in former years, said Peter F. Bommarito, publicity chairman.

Tickets at \$1.50 per person may be purchased at the MSU Book Store and the Campus Book Shop in East Lansing, Paramount Newshop in Lansing, Pino's Record Shops in Lansing, at Frandor or at any state agency.

ROTC Gets Preview Of Typical Army Day

Advanced ROTC cadets recently received a first hand view of Army life from Lt. David W. Bennett, an MSU graduate now stationed in Fort Benning, Ga. Bennett, here on leave, spoke to ROTC juniors and seniors about a typical day in the life of an Army officer. He also gave them a run-down of courses offered to newly commissioned officers.

The discussion was aimed at giving juniors, who are beginning to study the branches of the Army, some understanding of how their placement will utilize their background and future plans.

ROTC seniors, having just completed their branch selection, were also eager to hear what is in store for them when they receive their gold bars this June.

"The Army needs 17,000 new second lieutenants next year," Bennett said. "Over 100 of these new officers will come from Michigan State," he added, referring to the senior class.

Since leaving State, Bennett

has been an engineer platoon leader and has attended the basic engineer officer course at Fort Belvoir, Va., and the Airborne School at Fort Benning, Ga.

Following his leave he will return to Fort Benning where he will tackle the Ranger Course. He will then spend three years in Europe.

Upon returning from Europe he will attend a two-year graduate course in civil and nuclear engineering at the Massachusetts Institute of Technology.

Bennett is the son of Mr. and Mrs. William H. Bennett of East Lansing.

Congress Moves Home For Tonight

Student Congress will move back to its old quarters in 328 Student Services for tonight's meeting at 7.

Congress has met in the International Center's Con-Con room for the past two weeks, but the room was previously reserved for tonight.

Original plans were to meet in Shaw Hall until the West Shaw general council said it would be necessary to charge the group for use of its facilities.

Speaker Howie Wilchins, Paterson, N.J., junior, said Congress hopes to meet in residence halls about every third week to make it easier for students to attend the meetings as spectators.

"We're trying to see whether we can have use of residence hall facilities without charge since we are an all-University group," Wilchins said.

Tonight's meeting is open to the public.

Who's Whose

PINNINGS

Myra Schulman, Detroit sophomore, to Dennis Potocksky, Detroit junior and Alpha Kappa Psi. Sharon Waters, Lincoln Park junior and Delta Zeta, to Robert Leonard, Saginaw senior and Delta Upsilon.

ENGAGEMENTS

Pamela McKee, Saginaw senior, to Craig Graham, Lathrup Village senior.

New Members

The Delta Delta chapter of Pi Omega Pi, national honorary business education fraternity, recently initiated five new members.

They are Nancy Faussett, Howell junior; Susan Grein, Saranac sophomore; Janice Pesko, St. Joseph junior; Ann Vilhauer, Columbus, Ohio, junior; and Lana Volkert, Hudson junior.

New & Used

Textbooks
Paperbacks

SPARTAN
BOOKSTORE

M.S.U. Souvenirs
CORNER of ANN & MAC

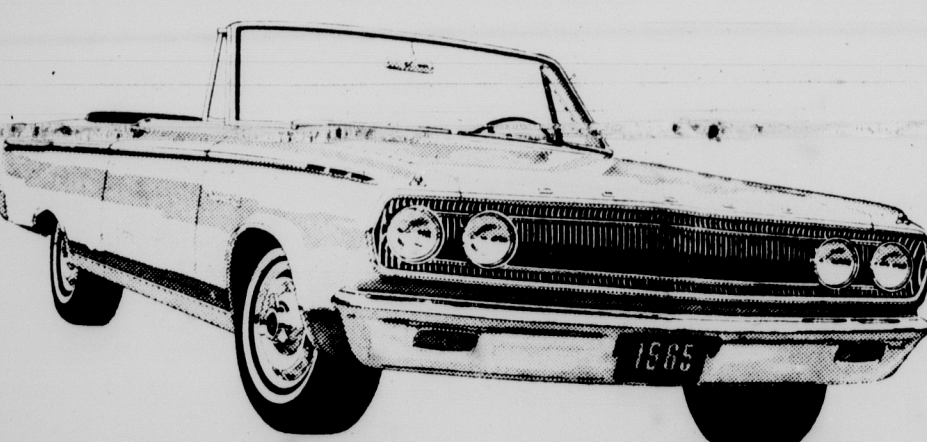
Chuck says
he paid 300 bucks
less for
his Coronet
than you did
for that turtle
of yours

You really
know
how to
hurt a guy



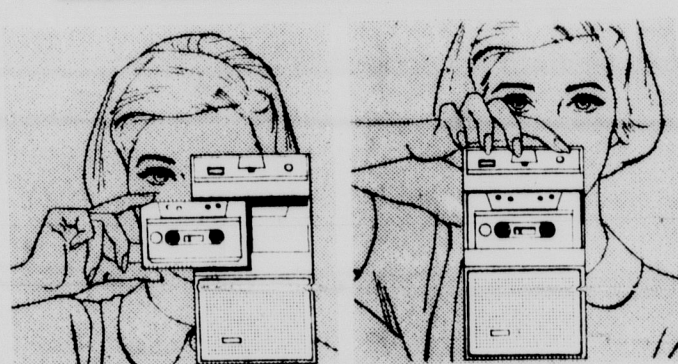
"Chuck's a swinger," says she. "His Coronet is quick and clean, with a lean and hungry look. It's equipped with a 426 cubic inch mill that will mock your turtle at the strip or on the street. He's got four-on-the-floor, buckets, belts, carpets, console, spinners, and a padded dash. And he said that everything but the four-speed stick and the 426 was standard." Then she broke his back by asking, "Didn't you pay extra for some of that jazz?"

Don't let the truth hurt you. Better see the all-new, hot new Dodge Coronet before you buy a (cuckoo), a (cuckoo-cuckoo), or even a (cuckoo-cuckoo-cuckoo).



'65 Dodge Coronet DODGE DIVISION CHRYSLER MOTORS CORPORATION

NEW FROM **Norelco**



LOADS IN SECONDS...RECORDS FOR AN HOUR

CARRY-CORDER '150'

CORDLESS CARTRIDGE TAPE RECORDER

Snap in tape cartridge, flick a switch, and record! ANYWHERE! Fully portable tape cartridge CARRY-CORDER is easy to load, easy to operate, too! One switch for instant record playback. Complete with deluxe carrying case, mike with detachable switch, mike pouch, 4 tape cartridges, and patch cord.

SEE IT! TRY IT! BUY IT AT:

tpi
TAPE RECORDING INDUSTRIES

1101 E. Grand River ED 2-0897
OPEN Mon. - Fri. 9:00 - 5:30
Wed. nite 'til 9:00 Sat. 12:00 noon

ABC Auto Parts Discount Prices

GENERATORS and starters, Rebuilt 6 or 12-volt. Guaranteed!

Exchange price ... 7.90

VOLTAGE REGULATORS Rebuilt.

exchange price ... 2.26

REBUILT SHOCKS guaranteed 15,000 miles or 1 year. each ... 3.33

NEW MUFFLERS as low as ... 1.99

NEW BATTERIES exchange price, as low as ... 7.95

NEW SEALED BEAMS99

SALVAGE CARS Large stock used parts.

MECHANIC on the job! Installation service available.

ABC AUTO PARTS

3 Blocks East of Grand Trunk 613 E. South St. IV 5-1921



WEDNESDAY'S 49¢ DAY

Dig into as many golden buttermilk pancakes as you can eat for just...

49¢

Now serving a complete line of meals and sandwiches

2820 E. Grand River IV 7-3761

Hours: Sun.-Thurs. 6 AM-12 Friday-Saturday 24 Hrs.



FARRINGTON DANIELS

Sigma Xi Will Hear Top Chemist

One of America's leading chemists, Farrington Daniels, will lecture today at the monthly meeting of the MSU chapter of the Sigma Xi scientific society.

He will speak on "Direct Use of the Sun's Energy" at 7:45 p.m. in the Engineering Auditorium. The public is invited.

Daniels is a professor emeritus at the University of Wisconsin. He served as chairman of the Chemistry Department there from 1952 until 1959, and is now with the Wisconsin Solar Energy Laboratory.

He is president of the Solar Energy Society and Sigma Xi. He was president of the American Chemical Society in 1953 and of the Geochemical Society in 1958. He holds degrees from the University of Minnesota and Harvard University.

Daniels has been with Wisconsin since 1920 except for two years as director of the Metallurgical Laboratory (atomic energy program) at the University of Chicago, 1945-46.

He has written papers on chemical kinetics, electrochemistry, atomic energy, thermoluminescence of crystals and applications of solar energy as well as six books including texts on physical chemistry and experimental physical chemistry.

Calendar of Coming Events

WEDNESDAY

Rabbi Frankel will speak to all interested girls in the West Landon lounge at 6:30 p.m., following dinner. His talk will be a friendly chat, covering Judaism and anything else that comes up. All welcome.

Freshman Golf Team-7:15 p.m., 209 Jenison.

MSU Rifle Club-8 p.m., Dem Hall basement.

Promenaders-7 p.m., 34 Women's I.M.

Socialist Club Meeting-9 p.m., Parlor A Union.

United Nations Security Council Meeting-7:30 p.m., 22 Union.

THURSDAY

Ecology Discussion Group--Noon, 450 Natural Science.

Forestry Seminar--Noon, 1 Forestry.

Zoology Seminar--Noon, 204 Natural Science.

Agricultural Economics Seminar--3:30 p.m., 33 Union.

Biochemistry Seminar--4 p.m., 101 Biochemistry.

Entomology Seminar--4 p.m., 401 Natural Science.

Psychology Colloquium--4 p.m., 111 Olds Hall.

Pathology Seminar--4:10 p.m., 346 Giltner.

Mathematics Colloquium--4:15 p.m., Physics-Math Conference Room.

Delta Phi Epsilon Lecture--7:30 p.m., 31 Union.

American Chemical Society Lecture--8 p.m., 122 Kedzie.

Lecture-Concert Series (B), Alexander Brailowsky, Pianist--8:15, Auditorium.

Case Hall Lecture, Albert Karson to speak on election--7:30 p.m., South Case Lounge.

FRIDAY

Classic Film Series, "The Cabinet of Dr. Caligari"--7 and 9 p.m., Anthony Auditorium.

Foreign Film Series, "Lovers of Teruel" (French)--7 and 9 p.m., Fairchild.

Guidance Wives--8 p.m., married Housing Office.

Opera Workshop--8:15 p.m., Music Auditorium.

SATURDAY

World Travel Series, John Goddard, "Adventure in the Far East"--8 p.m., Auditorium.

Opera Workshop--8:15 p.m., Music Auditorium.

Dorm Withdraws On Principle

South Campbell Drops Spirit

South Campbell Hall, deciding that Spartan Spirit has not shown itself to be an adequate means of improving school spirit, has decided to drop out of the organization.

It is the first women's dorm to leave the three-year-old student-formed body.

Jan Seidman, Brooklyn, N.Y., junior and president of the hall, said the 100 residents of South Campbell voted Thursday to go along with the decision of their house council to drop out of Spartan Spirit.

South Campbell, she said, had been rated last according to Spartan Spirit's new point-grading system after the first two weeks of tallying this term. She said the point tally sheets had been lost.

Later, she said, the dorm was rated 14th among the 22 women's dorms on campus in spite of enthusiastic participation in activities for which points are awarded.

"We're doing it on principle, not just because we were rated low," she said. "It wasn't serving its purpose."

Club Hears Medical Talk

As a land-grant institution, MSU has a clear mandate to respond to the medical needs of the world, Andrew D. Hunt, dean of the College of Human Medicine, told the MSU Men's Club Tuesday.

There are three main needs in the field of medicine, he said. One is more family physicians. Today many of the graduates of medical schools are going into research and federal service, he said, and there is getting to be a shortage of good family physicians.

Another need is for public health administrators. In Michigan, Hunt said, all counties have public health departments, but these are sometimes under the directorship of well-meaning persons who lack proper credentials.

The third need is for people in the area of academic medicine, he said. Presently there are about 800 vacancies on the faculties of medical schools because of a shortage of appropriately trained persons.

One of the major tasks of a medical school, such as the one being established at MSU, is to see that the graduates know about self-learning, he said. Self-learning is necessary so the graduates can change their behavior as medical needs change.

There is a feeling that current medical education tends to "flatten" students and discourage imaginative interpretation of data, Hunt said.

Seminar Set On Agrarians

Southern agrarians will be the topic of this week's American Studies Seminar in Parlor C of the Union tonight at 8.

Virginia Rock, professor of American Thought and Language, will speak on "The Southern Agrarians: Some Philosophical Implications."

She will attempt to trace some interconnections between political and esthetic theories as formulated by this influential group of Southern scholars and artists.

Don Hausdorff, also a professor of American Thought and Language, will moderate the seminar.

Academic Apparel

Academic apparel for fall term graduation, Dec. 11, can be sized and reserved any time during the present term at the Union desk. The hours are 7-11 p.m., Monday through Thursday and 7 a.m.-12:30 p.m. Friday through Sunday.

Apparel may be picked up at Union desk starting Nov. 23. The deadline is Dec. 6.

Singers Sought

Performers are needed for an evening of folk singing, the MSU Folklore Society's second annual "Big Sing" Dec. 4. Auditions are Nov. 25 in 34-34 Union.

Any interested singers should call Judie Goldbaum, 351-5414, Music Auditorium.

ROTC Correction

Sallye Brown, Muskegon junior, is honorary corps sponsor for the Sabre Drill Team, not Cherry Johnston, East Lansing junior, as was previously reported.

The new point system by which all living units are rated is about the best of its kind that is possible, she said, but cannot do the job it is intended to do.

"It isn't really a measure of how spirited a person is," she said. "You aren't participating for the school, you're doing it for your dorm."

The point system, Miss

Seidman said, is biased against the smaller dorms. The coeds of South Campbell spent a lot of time boosting the MSU football team, and many of the girls attended games, gave blood in the recent drive and attempted to earn points for the hall in other ways, she added.

The larger dorms, she said, have an easier time amassing

point values, and South Campbell residents were getting discouraged to see that their efforts were only earning the 14th position.

"Just because we are dropping out of Spartan Spirit," Miss Seidman said, "doesn't mean we will show any less spirit. We will still be as active as we always have been."

Spartan Spirit Awards

Wonders Hall won the third-on-campus judging period for Spartan Spirit trophies in the men's and women's divisions. In first place in cumulative standings are Bryan and West Landon, respectively, in the two divisions.

Positions in the third judging period are East Wilson, 2; Bryan, 3; East Shaw, 4; Armstrong, 5; West Shaw, 6; Abbot, 7; Emmons, 8; West McDonel, 9; East Akers, 10; West Fee, 11; and Snyder and South Case, tie for 12.

Women's residence halls, West

Landon, 2; North Case, 3; West Yakeley and East Fee, tie for 4; East Landon, Phillips and East McDonel, tie for 6; Butterfield, 9; East Mayo, West Mayo and West Wilson, tie for 10; Rather, 13; East Yakeley, 14; West Akers, 15; Mason, 17; Van Hoosen, 17; and North Campbell, South Campbell, Williams and Gilchrist, tie for 18.

Cumulative standings for the final trophy are men's halls, East Shaw, 2; North Wonders, 3; West Shaw, 4; Armstrong, 5; East Wil-

son, 6; Abbot, 7; West McDonel, 8; South Case, 9; Emmons, 10; Snyder, 11; East Akers, 12; West Fee, 13.

Women's halls, South Wonders, 2; West Yakeley, 3; North Case, 4; East McDonel, 5; Phillips, 6; Butterfield, 7; West Akers, 8; Rather and West Wilson, tie for 9; Williams, 11; West Mayo, 12; East Fee, 13; East Landon, 14; East Mayo, 15; Gilchrist, 16; North Campbell, 17; Mason, 18; East Yakeley, 19; South Campbell, 20; and Van Hoosen, 21.

Lansing City-Wide Celebration

All Lansing Kroger stores join in the Grand Opening of Kroger and Yankee at 2825 E. Grand River

WIN a GE Color Television Set

Nothing To Buy! Just Fill Out This Entry Blank

And Deposit At Kroger Store In Lansing!

See The Complete Line Of GE Color TV Set At

Barker-Fowler Electric, 111 E. Michigan, Lansing.



Peschke's Full Shank Ham

Smoked Hams lb. **39¢**

Center Cut Rib

Pork Chops lb. **69¢**

Roast 16 lb. and Up

TOM TURKEYS lb. **29¢**

12 to 16 lb. Morbest Tom and

HEN TURKEYS lb. **37¢**

Fresh Ground

HAMBURGER (3 lbs. or more) lb. **39¢**



Tenderay Swiss or

ROUND STEAKS lb. **79¢**

Tenderay

SIRLOIN STEAKS lb. **99¢**

Tenderay

T-BONE STEAKS lb. **99¢**

Kroger All Flavors

ICE CREAM

Reg. 79¢

Grand Opening

Special:

1/2 gal. **49¢**

30¢ Off!

All Lansing Kroger stores!



Grade 'A'

LARGE EGGS doz. **39¢**

Pillsbury or Robin Hood

FLOUR

25 lb. bag \$1.79

Borden's **ICE CREAM CAKE ROLL**

3 for \$1

Swift's Pure Shortening

3-lb. can 49¢

with \$5 or more purchase (Excluding beer, wine & tobacco)

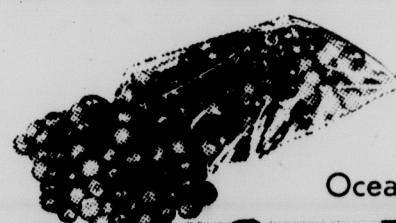
Redeem at Kroger thru Sun., Nov. 22, '64

Robin Hood or **PILLSBURY FLOUR**

25 lb. bag \$1.79

with \$5 or more purchase (Excluding beer, wine & tobacco)

Redeem at Kroger thru Sun., Nov. 22, '64



Ocean Spray

Cranberries

lb. bag

19¢

Reg. or Drip Vac-Pac

Kroger Coffee 3-lb. can **\$1.99**

with \$5 or more purchase (Excluding beer, wine & tobacco)

Redeem at Kroger thru Sun., Nov. 22, '64

California **Iceberg Lettuce** 2 for **39¢**

California **Vine Ripe Tomatoes** lb. **39¢**

Florida **TANGERINES** dozen **49¢**

Florida **TANGELOS** dozen **69¢**

Holiday **MIXED NUTS** 2-lb. bag **99¢**

Diamond Shelled **WALNUTS** 1-lb. bag **99¢**

Diamond Shelled **PECANS** 1-lb. bag **99¢**

Calavo **Fruit Cake Mix** 1-lb. bag **49¢**

KROGER ENTRY BLANK

Name _____

Address _____

Phone No. _____

Deposit at any Lansing Kroger store on or before Saturday, Dec. 5, 1964.

New East Lansing Kroger Store Hours

Monday 9 a.m.
thru to
Saturday 10 p.m.

Sunday - 12 to 7 p.m.

VALUABLE COUPON

25 Extra Top Value Stamps

with the purchase of a roll of

Bird Farm Pork Sausage

Redeem at Kroger thru Sun., Nov. 22, '64

VALUABLE COUPON

25 Extra Top Value Stamps

with the purchase of Jiffy's

Flash O Freeze Beef or

Chuckwagon Steaks

Redeem at Kroger thru Sun., Nov. 22, '64

VALUABLE COUPON

50 Extra Top Value Stamps

with the purchase of three 3-oz. pkgs.

Hygrade's Sliced

or Smoked Beef

Redeem at Kroger thru Sun., Nov. 22, '64

VALUABLE COUPON

50 Extra Top Value Stamps

with the purchase of a

Boneless Rolled and Tied

PORK LOIN ROAST

Redeem at Kroger thru Sun., Nov. 22, '64

VALUABLE COUPON

50 Extra Top Value Stamps

with the purchase of Two 14-oz. pkgs.

KROGER NUTS

Redeem at Kroger thru Sun., Nov. 22, '64

VALUABLE COUPON

50 Extra Top Value Stamps

with the purchase of a 3 1/2 oz. tube

STRIPE TOOTHPASTE

Redeem at Kroger thru Sun., Nov. 22, '64

VALUABLE COUPON

100 Extra Top Value Stamps

with the purchase of a 10-oz. jar of

SPOTLIGHT INSTANT COFFEE

Redeem at Kroger thru Sun., Nov. 22, '64

VALUABLE COUPON

50 Extra Top Value Stamps

with the purchase of a 4-oz. box of

Kroger Black Pepper

Redeem at Kroger thru Sun., Nov. 22, '64

VALUABLE COUPON

50 Extra Top Value Stamps

with the purchase of any 2 pkgs. of

Country Oven Cookies

Redeem at Kroger thru Sun., Nov. 22, '64

VALUABLE COUPON

50 Extra Top Value Stamps

with the purchase of a 5-lb. bag of

GRAPEFRUIT

Redeem at Kroger thru Sun., Nov. 22, '64

VALUABLE COUPON

50 Extra Top Value Stamps

with the purchase of a bunch of Jumbo

PASCAL CELERY

Redeem at Kroger thru Sun., Nov. 22, '64



SPARTAN SABRE DANCE--While January may seem a long way off to some, such is not the case for State swordsmen as days of preparation for the season opener parade by.

SABRE STATE STRONGHOLD

Fencers Face Rebuilding

By BOB KAMINSKI
State News Sports Writer

Athletic tenders, as common at MSU as over-crowded classrooms, do much to bolster Spartan teams by giving them the top prospects from high schools across the nation.

But on Coach Charles Schmitter's fencing squad, any one who has picked up a sabre, foil or epee during his prep days is quite a rarity.

Schmitter has done a remarkable job in molding the green swordsmen into a winning squad demonstrated by State's first place Big Ten finish in 1962 and runner-up spot the year after.

However, the prospects of another high ranking at the end of this season appear slim.

Schmitter is faced with developing some semblance of balance among his sabre, foil and epee squads.

Graduation and financial problems have both made deep slashes into the strength of last year's team.

At the present, the only proven

strength lies in the sabre unit which is led by two seasoned juniors in Mel Laska and Mark Haskell.

Both will be top contenders for the conference championship in their division during the next two seasons.

The question of how far they will develop this year is still unanswered.

Other members of the sabre squad are John Copper, Lansing senior, and newcomer Clarence Chappie.

Foil, which had the strength and finesse during the past two seasons, is suffering from the loss of the one-two combination of Nels Marin and Lew Leonard.

Bryan Kutchins, a runner-up in epee at the Big Ten meet last winter, is expected to carry foil this year.

Despite his surprise showing in the epee last season, after only one week of practice on the weapon, Kutchins has decided to stick with the foil.

Other members of the foil team include juniors John Beam, Ron McComber, Bill Siebert and George Webb, and senior Steve Vore.

The epee squad, which is led by Captain Joel Serlin, includes senior Gene Pawlich, and juniors Don Lund, Tony Hall and Gary Steinhart. Also with the team are

BARNES FLORAL of East Lansing
WE TELEGRAPH
FLOWERS
WORLD WIDE
215 Ann ED 2-0871

'64 Illini Lack '63 Form

The Name's The Same, But...

By JERRY MORTON
State News Sports Writer

"Illinois has all the ingredients of a great team--a good defense, fast backs, and more power runners than any team we've played," Duffy Daugherty made that statement about the Illini exactly one year ago, but the same quote could almost apply to this season's Illinois squad.

Last season at this time, Spartan fans were anxiously awaiting the Illini game, knowing that a victory would give the Green and White an undisputed Big Ten championship.

Now, however, the situation has changed. Illinois will enter Saturday's contest at Champaign with a 3-3 Big Ten mark and a 5-3 record overall.

The Green and White are 3-2 in league play and possess a 4-4 mark for the year.

Despite the Illinois record, the Spartans are aware that the Illini will enter the game with many of the players who took part in that 13-0 Thanksgiving Day victory that ruined MSU's plans for a New Year's Day in Pasadena.

Defensively, the Illini still have the services of a forward wall led by All-American center Dick Burkus who was one of the major reasons for last year's shutout.

In the backfield, veteran quarterback Fred Custaro is calling signals. His running backs include two men who should need no introduction to Spartan fans. . . Jim Grabowski and Sam Price. Fullback Grabowski scored the only touchdown in the 1963 Spartan game and will enter Saturday's game fresh from setting a Big Ten record.

He established a conference game rushing mark against Wisconsin Saturday when he picked up 259 yards in 33 carries.

The Spartans will enter the contest without the services of halfback Dave McCormick and linebacker Ed Macuga.

Both suffered knee injuries against Notre Dame Saturday. Don Japenga sustained a sprained ankle at South Bend, and his appearance in the Illinois game has been labeled "questionable."

The injuries will cause some reshuffling of the MSU lineup for Saturday's contest.

Spartan eight-game statistics show Dick Gordon to be the top rusher with 711 yards with Clinton Jones in second place with 296.

In the pass department, Steve Juday has completed 72 of 129 for 849 yards with end Gene Washington making 33 receptions for 513 yards and five touchdowns.

High School Field Rival For Stadium

By DUANE LANCASTER
State News Sports Writer

When MSU's varsity reserve gridmen take on the freshman squad Thursday at East Lansing High's field, they need not feel degraded.

Trojan Field may not have the

color that is connected with mammoth Spartan Stadium but it's been the home of one of the most successful football teams in Michigan.

East Lansing breezed through the year with a flawless 8-0 record to win the South Central Conference crown and topped it off by being named state Class A football champions.

Ask Notre Dame, Michigan, Indiana and North Carolina about State's season.

The reserves, comprised mostly of sophomores and juniors not making the trip to Illinois, will meet the highly touted Trojan squad at 7:30 p.m. It'll be the first time a Spartan team has played under the lights in the Lansing area.

In 1959, State played their only night football at Miami, Fla.

Thursday's game, a regulation tilt, will be sponsored by the Lansing Downtown Coaches Club in conjunction with AUSC.

General admission tickets for the game are \$1 for adults and 50 cents for all students. Tickets are available at the athletic ticket office in Jenison or at the gate.

Proceeds will go to the Ralph Young Scholarship Fund.

Starting squads have been picked by Freshman Coach Burt Smith and John McVay, who's handling the varsity reserves.

The opening offensive lineup for the freshman will show Jim Juday and John Whalen at the ends and Joe Przybycki and Norm Jenkins at guards with Phil Brittain and Dennis Miller manning the tackle slots. Larry Smith will be at the center.

The backfield will include Jim Raye at quarterback, Dwight Lee and Bob Lange at the halves and Bob Apisa at fullback.

The starting offensive backfield for McVay's club will have Chuck Lowther at quarterback, Jim Hoyer and Jim Summers at halfbacks. Bob Mahan will be at full.

Regular collegiate rules will apply during the game with the exception that free substitution will be allowed.

The game is the first of its kind at MSU and is expected to be a sellout.

Injuries As Big A Problem As Competition For Booters

The NEWS In

SPORTS

By RICK PIANIN
State News Sports Writer

Soccer returns to MSU this Saturday as the booters take on the University of Maryland in the first round of the NCAA soccer championship tournament.

St. Louis edged out MSU for

the top honors in the Midwest conference, which automatically matched the second place Spartans with Maryland, the number two team in the South.

MSU and St. Louis will not meet until later in the tournament, provided that both teams remain undefeated.

playoffs for the past six years and enters the tournament this season with an 8-2 record. Its two losses came at the hands of Army and Navy, by the scores of 2-1 and 1-0, respectively.

"Maryland has been a collegiate soccer power for the past 15 years," commented Coach Gene Kenney "and should present us with some very stiff competition."

MSU's greatest concern is with Goalie Charley Dedich, who is suffering from a severe back strain. He missed both practices this week and is an uncertain starter for Saturday's game.

Should Dedich miss the game, Van Dimitriou, center forward, would be pressed into service in the net.

"We had to go with Dimitriou several times this season," explained Coach Kenney "and although this isn't his spot, he did a fine job."

Dimitriou, hampered much of the season by an aggravated knee injury, was running very well in practice Tuesday.

Halfback Pete Dedich and Karl Thiele, outside left, should be ready Saturday, while Manny Ruschinski, halfback, is still unable to move about because of a muscle pull in the abdomen.

The game will begin at 1:30 on the soccer field south of Spartan Stadium. Admission to the game will be \$1.

Wrestlers Look To Olympian

Only It's For Duties As Coach

By PHIL PEARSON
State News Sports Writer

An Olympic champion will be a member of the wrestling team for the first time this year. Unfortunately the athlete will not wrestle for the Spartans but instead coach.

Doug Blubaugh, gold-medal winner in 1960 has become the assistant to Head Coach Grady Peninger.

This is not the first meeting of the two coaches. In 1953 Peninger coached the Ponca City High School team to the state championship of Oklahoma. Blubaugh became Peninger's first state champion that year when he won the title at 154 pounds.

Blubaugh's success continued at Oklahoma State University where he won the AAU and NCAA titles in 1957 and was voted the outstanding collegiate wrestler.

In 1960 Blubaugh went to Rome and won a gold medal in the 160 pound class. For his efforts he was voted the outstanding wrestler in the world.

"For five years I trained just to try out for the Olympics," said Blubaugh, "and to win seemed almost unbelievable."

Before coming to State,



USING HIS HEAD--That's Grady Peninger, MSU wrestling coach, showing how it's done with the use of one of his matmen.

Blubaugh coached at Oklahoma and Michigan.

"I am very happy to be back with Grady. I consider him a great coach and will enjoy working with him," Blubaugh said.

Blubaugh stresses conditioning and mental attitude as the two key factors in wrestling.

"You have to be in top physical shape and have a tough mental drive to succeed," Blubaugh said.

On Dec. 5, the Spartans will meet the Air Force and begin a season which they hope will be better than last year's 10th place in the Big Ten.

Creative Dance Classes

Dancing classes will be held in the dance room of the Women's Intramural building Thursday, from 7:30-9 p.m.

All forms of dance will be offered, including tap, ballet and acrobatics, with particular attention to contemporary and modern jazz.

The class has been organized by Sherry Coscia, Grand Blanc, Mich., sophomore. Miss Coscia operated her own dance studio in Flint for three years. She has

danced with the Flint Civic Ballet and with a company in Maryland. Both men and women of the faculty and student body are invited to attend.

Green Splash

There will be a meeting tonight of Green Splash, women's swimming honorary, at 6:30. Tryouts will begin at 7:30 at the Women's Intramural Building.

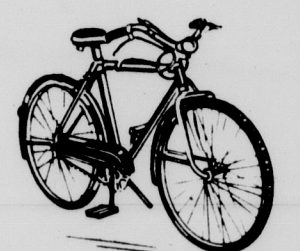
KRESGE'S

for one-stop family shopping and saving!

3 speed **English Racer**

\$29⁸⁸

Regular \$39.77



Bicycle Sale

Boys & Girls 26-inch

KRESGE'S

CAMPUS STORE

ACROSS FROM UNION

Goodwin's Fabrics
Across from the State Theater

Can You Buy Indian MADRAS Back Home?

Chances are the answer is no. So stock up now for the Holiday Season. An Ideal Gift!

Guaranteed to bleed. Hand loomed in India. 40" wide.

1⁷⁹ yd.

PATCH MADRAS 2⁹⁸ yd.

Take Home A Truly Campus Gift

SEP-AR-ATES

EVAN
Jacket \$30, A-line skirt \$18

PICONE
vest \$15, slacks \$18

striped blouse \$13, pleated skirt \$25

Evan Picone Separates shown above are available in blue and beige coordinate tones.

The Style Shop

301 E. Grand River east Lansing



A-DOOR-ABLE DUO--Pam Ramsey, Mortar Board president, undoubtedly draws appreciative stress from campus males, and Charlie Migyanka, football captain and Excalibur president, certainly draws much admiration from female fans on Saturday afternoons. But it was more for their abilities than their appearances that they were chosen seniors of the week. Photo by Larry Fritzman

Seniors Of The Week

Upper-Classmen Both Like Sports

Football and singing are among the interests of Seniors of the Week, Charlie Migyanka of East Lansing.

Charlie is probably best known as captain of the football team, but he is also president of the senior men's honorary, Excalibur.

Pam is also president of an honorary, Mortar, Board. Active in many campus functions, Pam also is a member of the Honors College.

Two years a member of the State Singers, Pam has sung in Greek Sing and her church choir. "I've grown up with a love for music and I sang quite a bit in high school." Though her sister majored in music, Pam is an English major.

Tennis and travel have also interested her. She has competed in tennis tournaments on the state level and in intramural events on campus.

Campus activities take up her time during the school year. She has worked on Greek Week.

3 Cars Crash; 3 Men Hurt

Three MSU students were injured in a three-car chain collision at Michigan Avenue and Harrison Road Monday.

Roy M. Hill, Lansing sophomore, and Michael R. Bryman, Rockville Center, N.Y., graduate student, received possible whiplash injuries when Hill's car was struck from the rear and in turn hit Bryman's auto, police said.

Both were taken to Edward W. Sparrow Hospital, treated and released.

The third driver, William M. Sheperd, Ferndale freshman, received a bruised knee in the accident, and went to Olin Health Center for treatment.

East Lansing police said Sheperd was ticketed for excessive speed, and failure to stop in the assured safe distance ahead.

Four Students In Accidents

Four MSU students were hurt in two automobile accidents in East Lansing late Sunday.

In a two-car collision at Grand River and MAC Avenue, Frederick C. Schilling, Keego Harbor junior, received head and leg cuts, and his passenger, Jamie Robertson, East Lansing freshman, received leg cuts, and a head bruise.

Police said they ticketed the driver of the second car, Harry W. Davidson III, Saginaw senior, for failure to yield the right of way.

After a three-car crash at Harrison Road and Kalamazoo Street, Charles R. Jaeger, Warren junior, complained of neck pains.

Police said Joseph M. Blitcke, 4264 Greenwood Drive, Okemos, was given a summons for failure to yield the right of way after his car collided with Jaeger's, then struck a third auto driven by Robert E. Schoenmeyer, Saginaw junior.

All four injured students refused hospital treatment, and told police they would see their own doctors.

J-Hop, Activities Carnival, and Water Carnival.

She also took part in College her church's Canterbury Club.

Pam, a member of Pi Beta Phi Sorority, thinks sororities and fraternities especially important for East Lansing students.

Pam would eventually like to teach English in either high school or college. "I eventually want to end up in a college town."

Migyanka, a physical education major, has found football time-consuming but rewarding. He described the football player's viewpoint during a game.

"You are shut off from the crowd. You don't even realize it's there. It's rough down there, but it's fun. You are always thinking of the down, or how many yards we have to go, or the time."

Every day before a football game, fall term, the players practice from 3:30 to 6 p.m. Then there is "training table," where they eat and talk football.

Charlie can finally get down to studying at about 7:30, and then he is tired. But he still keeps a respectable 2.7 all-University average.

Charlie also belongs to Varsity Club, Blue Key and Men's HPER.

This is really his last term here, he said. He will student teach winter term at Lansing Sexton. But he does plan to enter graduate school at MSU where he will work in guidance and counseling.

High school coaching attracts him, but he hopes to go into counseling as well.

Dean Fitzgerald Represents State

Laurine E. Fitzgerald, assistant dean of students, represented MSU at a meeting for directors of women's programs at Big Ten universities in Chicago last week end.

Topics of the meeting included effects of changes in regulations, changing sex standards and academic pressures, personalizing contacts with students and the status of leadership experience of college women.

Error Found

This term's AUSG calendar incorrectly stated that all women who live on campus will be able to get late privileges on the evening of Nov. 20.

Late permission will be available only to those women who are attending campus functions that have applied for late permissions.

Spartan Alumnae Receive Award

An outstanding club award has been presented to the Spartan Alumnae of Ingham County. Accepting the award for the club was a past president, Mrs. Thomas Vaughn of East Lansing. Last year a scholarship was established to be presented to a deserving young woman from Ingham County.

IT'S A FACT!

Actual Price Comparison Will Prove It! Cash Savings On Item
After Item Means A Lower Tape Total... Savings You Keep In
Your Pocketbook! Shop The Big "E" Any Day Monday Thru Saturday - See For Yourself!

IN LANSING AT
SHOPPERS FAIR
3301 E. MICHIGAN AVE.
NEXT DOOR TO FRANDOR
AND AT
TOPPS DISCOUNT CITY
921 WEST HOLMES ROAD
CORNER OF S. LOGAN



Why Not Pay Less For Fresh, Lean Meat At The Big "E"

MONEY SAVOR BEEF CHUCK POT ROAST LB. 37¢	MONEY SAVOR BEEF ROUND or SWISS STEAK LB. 69¢	U.S. GOV'T. INSPECTED 18 TO 22 POUNDS TOM TURKEYS LB. 29¢	HYGRADE WEST VIRGINIA BONELESS HAMS LB. 79¢
MONEY SAVOR CENTER CUT CHUCK ROAST LB. 43¢ MONEY SAVOR ARM CUT CHUCK ROAST LB. 52¢ MONEY SAVOR BONELESS CHUCK ROAST LB. 58¢ MONEY SAVOR LEAN SHORT RIBS LB. 35¢ MONEY SAVOR STANDING RIB ROAST LB. 69¢	MONEY SAVOR SIRLOIN STEAK LB. 83¢ MONEY SAVOR T-BONE STEAK LB. 89¢ MONEY SAVOR BEEF CUBE STEAK LB. 89¢ MONEY SAVOR BONELESS BEEF STEW LB. 59¢ MONEY SAVOR LEAN RIB STEAKS LB. 79¢	U.S. GOV'T. INSP. 10-13 LB. HEN TURKEYS LB. 35¢ GRADE A - 18 to 22 LB. TOM TURKEYS LB. 35¢ GRADE A - 10-13 LB. HEN TURKEYS LB. 38¢ SWIFT PREMIUM DUCKLINGS LB. 49¢ SWIFT PREMIUM - 22 oz. CORNISH HENS EA. 69¢	SWIFT PREMIUM FULLY COOKED CANNED HAM 5 LB. \$3.99 MORREL 10-12 LB. AV. E-Z-CUT HAMS LB. 69¢ SWIFT'S PREMIUM SPRING LAMB! WELL TRIMMED LEG-O-LAMB LB. 78¢
SWIFT'S PREMIUM PROTEIN MANHATTAN BONELESS OR BEEF CUBE STEAKS LB. 99¢ BONELESS IMPERIAL ROAST LB. 79¢	TENDER FRYED PARTS FRESH FRYER WHOLE LEGS LB. 45¢ RIBS ATTACHED FRYER BREASTS LB. 49¢	ECKRICH SKINLESS FRANKS LB. 59¢ HERRUDS SLICED LEONA BOLOGNA LB. 59¢	KRAFT'S FRANKENMUTH MED. CHEESE LB. 59¢ SWIFT'S BROWN N' SERVE SAUSAGE LB. 55¢

BIG "E" COUPON
SAVE 20¢ MAXWELL HOUSE
COFFEE
3 LB. CAN **\$1.99**
WITH COUPON AND \$5 FOOD PURCHASE
COUPON GOOD THRU SAT. NOV. 21

BIG "E" COUPON
SAVE 25¢ GOLD MEDAL OR
PILLBURY'S FLOUR
25 LB. BAG **\$1.74**
WITH THIS COUPON AND \$5 FOOD PURCHASE
COUPON GOOD THRU SAT. NOV. 21

CHECK THESE PRICES

SEE WHAT YOU SAVE ON SEASONAL NEEDS!

POLLY ANNA CRACKED WHEAT BREAD 19¢	FAMILY FARE APRICOTS, PLUMS OR PEACHES 2 1/2 CAN 24¢
POLLY ANNA HOME STYLE SPLIT TOP BREAD 2 FOR 45¢	PLANTER'S CREAM OR CRUNCHY PEANUT BUTTER 18 oz. JAR 49¢
POLLY ANNA PUMPKIN PIE ONLY 49¢	AUNT JANES MIDGET SWEET PICKLES 20 oz. JAR 49¢
PRESTO WHIP TOPPING REG. 39¢ 10 oz. CAN. 29¢	AUNT JANES SWEET PICKLES 32 oz. JAR 49¢
COUNTRY FRESH SKIMMED MILK HALF GAL. 25¢	BETTY CROCKER CRANBERRY MUFFIN MIX 13 1/2 oz. 39¢
ALL FLAVORS SHERBET HALF GAL. 59¢	BETTY CROCKER CHOC. PARFAIT ANGEL FOOD CAKE MIX 16 oz. 55¢
ARIST. PEPPERMINT STICK ICE CREAM HALF GAL. 69¢	CHOC. PARFAIT FROSTING MIX 7 1/2 oz. 33¢
FAMILY FARE CHEESE SPREAD 2 LB. LOAF 43¢	BORDEN NONE SUCH MINCEMEAT BIG NEW 28 oz. JAR 59¢
ALL VARIETIES BANQUET FROZ. DINNERS EA. 39¢	TAYLOR SWEET POTATOES NO. 3 CAN 24¢
PET RITZ FROZEN MINCE OR PUMPKIN PIES 20 oz. PKG. 25¢	THANK YOU SPICED PEACHES 2 1/2 JAR 29¢
PET RITZ FROZEN CHERRY OR APPLE PIES EACH 29¢	OCEAN SPRAY CRANBERRY ORANGE RELISH 14 oz. JAR 35¢
KIMS FROZEN CANDIED YAMS 12 oz. PKG. 25¢	KRAFT MINIATURE MARSHMALLOWS 10 1/2 oz. 23¢
TREESWEET FROZEN ORANGE JUICE 6 oz. CAN 21¢	BAKERS CHOC. CHIPS 12 oz. PKG. 38¢
BIRDSEYE FROZEN MIXED FRUIT 12 oz. PKG. 33¢	REYNOLD'S HEAVY DUTY ALUM. FOIL 25 FT. ROLL 55¢
EBERHARD FROZEN SLICED STRAWBERRIES 16 oz. PKG. 33¢	ALL FLAVORS JELL-O PKG. 8¢
LOW CALORIE METRI-COLA 12 oz. CAN. 5¢	ASST. COLORS COMO TOILET TISSUE 4 ROLL PAK 25¢
CYPRESS GARDEN ORANGE DRINK 32 oz. CAN. 15¢	GOLD SEAL GLASS WAX SPRAY 14 oz. CAN 49¢
TETLEY - 20¢ OFF LABEL BLACK TEA BAGS 100 CT. PKG. 79¢	SCOTTIES ASST. OR WHITE FACIAL TISSUES PKG. OF 200 19¢

POLLY ANNA SLICED
WHITE BREAD 5 1-LB. LOAVES **85¢**

FROZEN YELLOW 12 oz. PKG.
LIBBY'S SQUASH **10¢**

LIBBY'S
PUMPKIN 303 CAN **12¢**

JIFFY
PIE CRUST MIX 9 OZ. PKG. **10¢**

SEVILLE QUEEN
OLIVES QUART JAR **53¢**

OCEAN SPRAY - STRAINED OR WHOLE
CRANBERRY SAUCE 300 CAN **19¢**

BLUE DIAMOND SHELL
PECANS SAVE 20¢ 1-LB. BAG **99¢**

SAVE 18¢ ON PURE SHORTENING
SWIFT'NING 3 LB. CAN **47¢**

U.S. No. 1 MICHIGAN
POTATOES 20 LB. BAG **88¢**

FRESH CRISP
PASCAL CELERY STALK 19¢

GREEN DIAMOND
WALNUTS BABY SIZE LB. 39¢

355-8255

GET QUICK CASH FOR CHRISTMAS - SELL NOW

355-8255

get BIG RESULTS with a low cost WANT AD

- AUTOMOTIVE
- EMPLOYMENT
- FOR RENT
- FOR SALE
- LOST & FOUND
- PERSONAL
- PEANUTS PERSONAL
- REAL ESTATE
- SERVICE
- TRANSPORTATION
- WANTED

DEADLINE

11 a.m. one class day before publication
Cancellations - 12 noon one class day before publication

PHONE

355-8255

RATES

1 DAY . . . \$1.50
3 DAYS . . . \$3.00
5 DAYS . . . \$4.50

Based on 15 words per ad. There will be a 50c service and bookkeeping charge if this ad is not paid within one week.

The State News does not permit racial or religious discrimination in its advertising columns. The State News will not accept advertising from persons discriminating against religion, race, color or national origin.

Automotive

- BUICK**, 1961 LeSabre convertible, Good condition, \$1,795, Call 372-2586 between 8 and 4. 35
- BUICK**, 1959 LeSabre 2-door Hardtop, Light Blue, Excellent motor, You can't beat the price, OX 9-2792. 37
- CADILLAC**, 1955, Power brakes and steering, Radio, heater, whitewalls, engine, body, interior, excellent, \$395, IV 2-6925, 35
- CADILLAC**, 1957 2-door hardtop, New premium tires, full power, Like new, Call TL 2-0459 after 4:30 pm. 35
- CHEVROLET**, 1960 Impala convertible, Red, 348 with triples, Stock, Real clean, Call 355-2761. 38
- CHEVROLET**, 1958 Bel Air V-8, automatic, 4-door, White sidewalls, radio, fine buy, Phone 484-824. 35
- CHEVROLET** 1959 Bel Air Economy "6", Power glide, Two door, Radi, One owner, \$495, Call ID 2-3894. 35
- CHEVROLET** 1962 Impala, 327 cu. inch, Radio, heater, Must sell or trade down on wagon, 372-4335. 35
- CHEVROLET**, 1955 2-door, Excellent tires, Reasonable body, Terrible engine, See to Depreciate, \$90, ID 2-4956. 39
- CHEVROLET**, 1958 White, "6", Automatic, Good condition, No rust, 355-2433. 37
- CHEVROLET**, 1958 2-door, V-8 automatic, White walls, No rust, IV 2-2390 between 2 and 9. 39
- CHEVROLET** 1962 Impala, Silver blue, V-8, 4-door, Automatic transmission, Whitewalls, Radio, heater, \$1,375, 484-1821, 36
- CHEVROLET** 1956, Six cylinder, stick shift, \$100, Call 355-2568. 35

NOTICE

NOW many of the apartments that we manage are just being completed. To rent these units, the owners have authorized a REVISED RENTAL SCHEDULE for the balance of the school year. There's a deal for you, whether there's one, two, three, or four of you. See us now at our new location: 444 Mich. Ave., East Lansing

BOEHM & BOWERMAN
PROPERTY MANAGEMENT CO.
444 Mich. Ave.
Phone 332-0838

Automotive

- CORVAIR MONZA** 62, 4-door auto, \$1,050, 355-2318, After 5 pm, call 332-4968. 35
- CORVAIR MONZA**, 1961 3-speed, Good condition, Take over payments, Will consider trade, Phone TU 2-3450. 37
- CORVAIR MONZA** 1961, 4-speed, radio, hot-air heater, Tack, Must sell, 211 S. Howard, 372-4638. 35
- CORVAIR** 1963 2-door coupe, Radio and heater, 3-speed, Rust-proofed, Manufacturer's warranty, 627-6011. 34
- CORVETTE**, 1964 Fastback, Silvermist, Blue, white interior, AM-FM, Runs beautifully, 300 hp, 4-speed, Bob, 332-0262, 35
- DODGE**, 1964, Automatic, 4-door sedan, Light green, \$1,450, Call IV 9-1678 after 5 pm. 36
- DODGE**, 1960-62 hardtop, V-8 automatic, No rust, Excellent shape, \$1,000, Phone 485-0976. 35
- DODGE**, 1957, 5 new tires, 2 snow tires, 40,000 miles, 8-cylinder automatic transmission, 332-4630. 35
- DODGE**, 1957, Good transportation, \$50, Also, Pontiac, 1953 for \$25, Call 455-4058 after 6. 38
- EDSEL** 1959 Station Wagon, V-8 automatic, Good condition, \$225, Phone 337-1412 after 5 pm, or weekends. 39
- FALCON** 1960, Economy plus, Call 484-3319 between 10:30 am. 37
- FALCON** 1961 4-door, Standard, radio, good condition, \$625 or best offer, 410 Park Lane, 351-4062. 37
- FORD** 1963 Fairlane, 4-door six, Standard shift, Radio, heater, 15,000 miles, Private owner, 355-0563. 37
- FORD**, 1960 convertible, Good condition, Stick shift, \$475, Phone 641-6055. 38
- FORD**, 1958 Model A, 2-door sedan, Good condition, 4023 North Turner St, Phone IV 4-4875, 35
- FORD** 1964, Fairlane 500, 2-door, V-8 automatic, White sidewalls, Low mileage, Call owner, 482-7614. 37
- FORD** 1953 - Exceptionally good condition, With new rebuilt engine, Call 337-7236. 35
- FORD** 1960 Ranch Wagon, Six cylinder, standard shift, Radio, heater, Reasonable, Must sell, Call 485-5866. 39
- FORD** 1957 Fairlane, 4-door, V-8 automatic, Good tires, Runs good, \$200, IV 9-1895, 412 Haze St. 35
- IMPALA**, 1963 S.S. convertible, Power steering, P.B. Radio, Power glide, Sharp, 627-6005, 38
- LANCER** 1961 2-door sedan, Standard transmission, Radio, New tires, \$445, HAROLD PLETZ, 150 E. Grand River, Williamston. C37
- LINCOLN** 1956 Premier, \$199, Full power, Radio and heater, A real bargain, 2032 Clifton, IV 4-8733. 37
- MERCUARY** 1954, Good engine, automatic transmission, radio, heater, tires, Bad body, \$40, 351-4605 after 6 pm. 36
- MGA**, 1957, Good shape, Body and engine good, Tonneau cover, \$675, Tom, ED 7-2014 after 7 pm. 35
- OLDSMOBILE** 1956 Convertible, Power steering and brakes, Runs good, \$250, Call IV 5-0564. 36
- OLDSMOBILE** 1954 4-door, 65,000 miles, Some rust, Good tires, Dependable transportation, \$95, 482-2980. 37
- OLDSMOBILE**, 1962 Startline hardtop, Full power, Must sell now, Business sacrifice, Call 332-0976. 39
- OLDSMOBILE** 1964 Deluxe F-85, 4-door, Full power, All accessories, 7,500 miles, \$2,400, 372-0467. 37
- OLDSMOBILE**, 1964 Vista Cruiser, 9-passenger, deluxe, full power, as new, Trade accepted, 355-8129. 37
- OLDSMOBILE**, 1963 Dynamic 88, 1-1/2 ton, 12,000 miles, Full power, Perfect condition, 882-0595. 37
- OLDSMOBILE** 1962 Super, 4-door hardtop, Black, One owner, 25,000 miles, Loaded, Phone 393-2532. 38

Automotive

- OLDSMOBILE** 1964 F-85, V-8, 4-door sedan, Jet way transmission, Power steering, Radio, heater, \$2,195, 372-1356, 38
- OPEL KADETT**, 1964 Station Wagon, 4-speed transmission, 25-30 miles per gallon, New condition, White, ED 2-1703, 38
- PLYMOUTH** 1962, "The Outlaw", Phone IV 9-4120. 37
- PLYMOUTH**, 1959, 390 cubic inches, 400 hp, Reasonable, Good runner, \$300, Very little rust, Call IV 9-1091. 35
- PONTIAC**, 1956, 8-cylinder automatic, Power steering, power brakes, \$75, Call after 5, 355-2843. 39
- RAMBLER AMERICAN** 1955, Stick shift, Good condition, Two new tires, \$295, Phone 339-2805. 38
- RAMBLER**, 1959 Classic, Standard 6, Good body, tires, Mechanically sound, Best offer over \$495, ED 2-4383. 39
- SPARTAN MOTORS**
- CHEVROLET** 1963 Corvair Monza, 4-speed, Radio and heater, Exceptionally fine condition. 39
- CHEVROLET** II Nova 1962 Convertible, Automatic transmission, Rebuilt motor, Radio and heater, Very clean. 39
- CHEVROLET** 1960 Impala 2-door hardtop, Automatic, Like new, Color, black. 39
- VOLKSWAGEN** 1964, Sunroof, Radio and heater, Top condition. 39
- 3000 E. Michigan IV 7-3715 C40
- TR4**, Excellent condition, Roll bar, sway bar, Radio, heater, Good tires, \$1,800, 353-0431, 35
- VOLKSWAGEN**, 1962 convertible, Excellent condition, 35,000 actual miles, Must sell, Best offer, 332-1204. 35
- VOLKSWAGEN**, 1964 Bus, Low mileage, Excellent condition, Phone ED 2-3093, See at 403 Southlawn, East Lansing. 35
- VOLKSWAGEN** 1963 White convertible, Black top, New whitewalls, Must sacrifice, Call 485-8930 evenings. 39
- VOLKSWAGEN**, 1958 Sunroof, 355-9771. 36
- VOLKSWAGEN** 1964, White, Whitewalls, Excellent condition, Phone 655-1693. 37
- VOLKSWAGEN** 1963 Karmann Ghia, Radio, low mileage, Clean and dependable, Overall A-1 condition! Phone 372-2294, 37
- VOLKSWAGEN** 1961, 23,000 miles, Used only as second car, \$1,050, IV 5-7809. 36
- VOLKSWAGEN**, 1956 sedan, Economical transportation, Best offer over \$350, 485-6354. 36
- VOLKSWAGEN CAMPER**, 1963, Selling \$1,000 below original cost, See at 511 S. Pennsylvania, 485-3173 after 5 pm. 36

Automotive

- Auto Service & Parts**
- GO HOME** "giving thanks" that you had your car tuned up first at MEL'S AUTO SERVICE, 315 W. Grand River, 332-3255, C41
- TUBELESS** 800 x 15 whitewalls, 6-volt battery and radio, hub caps, etc., 393-3153 after 3. 37
- 327 and 301 Chevrolet motors**, Super modified and 1958 Ford Ranchero truck, Speed equipment, 393-3332. 38
- AUTOMATIC TRANSMISSION** off 1957 Olds, 34,000 actual miles, Also generator, Come see-make offer, 882-5017. 37

Employment

- COLLEGE GRADS**, All academic majors considered, Numerous openings with nationally known organization, Specialized training programs, MC GILL EMPLOYMENT SERVICE, 710 Bank of Lansing Building, 489-6553, 41
- GREAT LAKES EMPLOYMENT** for permanent positions in office, sales, technical, Call IV 2-1543. C35

Employment

- EITHER BOY or girl** needed now through Christmas. Experience in selling women's shoes. Apply at J.W. Knapp's, Ladies shoe department, East Lansing. 37
- EARNINGS ARE unlimited** as an Avon representative. Turn your free time into \$\$. For appointment in your home, write or call: Mrs. Alona Huckins, 5664 School St., Haslett, or call evenings, FE 9-4833. C35
- FEMALE THERAPEUTIC** dietitian, 40-hour week, Many benefits, Pleasant surroundings, Personnel office, St. Lawrence Hospital. 39
- WAITRESSES AND curb girls**, Full and part-time, Evening shift, Several openings available, Good working conditions and above average pay, Apply daily 10 a.m. to 6 p.m. at the Elias Bros. Big Boy Restaurant, 401 E. Grand River next to Campus Theater. 35
- EMPLOYERS OVERLOAD COMPANY** needs girls for temporary assignments, Office experience required, 616 Michigan National Tower, Phone 487-6071. C35
- PIANO PLAYER**, Male or female for "Sing-a-long" music, Sunday only, 4 hours, 5 - 9, Good pay, IV 7-5543 or contact Dave R. Church, 1436 Jerome, Lansing after 3:30 pm. 37
- LAB TECHNICIAN**, 40 hour week, Good salary, fringe benefits, Lansing General Hospital Personnel Dept, Call IV 5-4311, ext. 202 from 8 am. to 5 pm. 37
- DEPENDABLE MAN** - I'm looking for someone to assist in sales, service department, Apply 515 E. Michigan Ave. 35
- WINTER TERM**, Girl for babysitting and light housework, All day Tuesdays and Thursdays, 332-2144. 35
- EXPERIENCED SINGLE** man to work on modern dairy farm, References required, 641-6125. 35
- BABYSITTER** to care for our 6-month old boy, Call 355-9897 after 5. 39
- BUSEBOYS - FULL or part-time**, No Sundays, Own transportation, Apply 204 N. Washington, Eagle Restaurant. 37
- P. E. MAJOR or Rec leader** for small group (6) children 9-11 years, Saturday a.m. IV 2-6257. 37
- GIRL NEEDED** for weekly ironing, \$1.00 per hour, Provide own transportation, Close to campus, ED 2-6413. 35

For Rent

- FOR RENT**: Garage behind Post Office, Call ED 2-1901. 38
- Apartments**
- WANTED: GIRL** for winter term, Cedar Village, Call 351-4216, 35
- FOUR TO SUB** - Sublet luxury apartment, Burcham Woods, 6 months lease available, 351-5285 after 7. 38
- VACANCY: NEED** person immediately or for Winter and Spring term, Cedar Village, \$60/month, 351-4496. 35
- WANTED - TWO girls** for Winter and Spring term, One girl for Winter term only, Albert Apartment, 1/2 block from campus, Reasonable rent, 351-5275. 35
- TWO GIRLS** needed to share apartment in Cedar Village, January to June lease, Call 337-1447. 39
- NEED ONE male roommate** for luxury apartment, Winter and spring terms, \$50 monthly, plus utilities, 337-2451. 36
- OKEMOS, LOVELY** furnished apartments, Parking, Private, three room, All utilities paid, 337-9676. 37
- FOR RENT**, Newly decorated modern apartment, downtown, Phone 655-1020 daytimes, evenings 655-2951. 36
- LUXURY FURNISHED** apartments in Eyedell Villa, 1242 Haslett Rd. for 2 or 3, Available for Winter and Spring terms, \$155 monthly, Call 351-4075 after 5 pm. 35
- GIRLS! NEW two-bedroom** apartment to sublease for winter and spring terms, \$60 monthly, 351-5192. 38

Community Circle Players presenting:
Legend of Lovers
This week only:
Thurs., Fri., Sat., 8:30
Sun., 4:00
Students \$1.00
Reservations ED 2-2221

For Rent

- Houses**
- FURNISHED HOUSE** for reliable couple, Low rent, 207 S. Francis, Lansing. 38
- OKEMOS - UNFURNISHED** house for rent, 1364 Jolly Rd. (Just East of Dobie), Professor out of country until August 1, 1965, Carpeting, some drapes, Stove refrigerator, \$175 a month, Call Margaret Nerad, ED 2-3534 or ED 2-6337, East Lansing Realty Co., Realtors. 36
- UNSUPERVISED**, ONE or two girls over 21 in exchange minimum housecleaning, cooking, Call 8 am.-5 pm, 699-2729. 35
- GRADUATE GIRLS** - Winter, Spring, Summer, Fall, Share nice house, including dog, Parking, \$45 month, ED 2-0747. 36
- OKEMOS - UNFURNISHED** house for rent, 1364 Jolly Rd. (Just East of Dobie), Professor out of country until August 1, 1965, Carpeting, some drapes, Stove refrigerator, \$175 a month, Call Margaret Nerad, ED 2-3534 or ED 2-6337, East Lansing Realty Co., Realtors. 36

For Sale

- FIREPLACE WOOD** Well Seasoned Maple 699-2867 C
- DIAMOND ENGAGEMENT** set, Appraised value, \$540, Will sell at \$400, 355-3459 or 332-5522. 35
- TODDLER'S CLOTHING**, 2nd, Pram suit, extra large, separate boots and mittens, Call ED 2-2726. 35
- PORTABLE TYPEWRITERS**, Olympia, Precision, Buy the finest, Terms available, HASSELLING COMPANY, 310 N. Grand, IV 2-1219. C35
- \$39.77** buys a new English 3-speed bicycle, Used bicycles and rentals also available, ACE HARDWARE AND GIFTS, 201 E. Grand River across from the Union, ED 2-3212. C
- AUCTION EVERY Saturday** at 1 pm, Automobiles, antiques, furniture, appliances, arts, etc., Buy and Sell, CAPITAL CITY AUCTION, 621 Hazel, Call 482-1476. C37
- SEWING MACHINE**, 1964 DEMONSTRATOR ZIG-ZAG, Just dial stitch desired for buttonholes, blind hems, darning, and many fancy designs, Marked for clearance at only \$52.00, or small terms, Still carries new guarantee, For information, call 484-8191. C35
- TURKEYS, FRESH** dressed or frozen, Young, tender, juicy, oven-ready, HOWE TURKEY FARM, Phone 627-5480. 35
- HAM GEAR** - Gosnet G76 with many extras, Auto helper springs and Hi-Fi pre-amp, 355-0761. 35
- SEWING MACHINE, SINGER ZIG-ZAGOMATIC** console, Dial a design, buttonhole, monogram, hem, all without attachments, This modern machine sold new for over \$200, Need reliable party to take on only eight payments of \$7.08 per month, Call 484-8191. C35
- BANJO, VEGA** Pete Seeger model, Hardshell case, \$290, Phone 393-1246. 39
- AQUARIUM** SEX easy with 3-week old equipment, 20-gallon stainless tank w/full Gro-Lux cover; under gravel filter; pumps; heater; etc, Call Tony, 355-3132 anytime. 36
- CAMERAS, NIKON S-3, f1.4 lens**, Also Contaflex and Norwood Director, Meter, Phone Chuck, 332-5141. 38
- MOVIE PROJECTOR**, 16 mm, Good condition, Used very slightly, Reasonable, Call ED 7-0200. 35
- CLOTHING, MEN'S** 42-46, Black leather jacket, Ladies' clothing, 12-16, Children's clothing 6-10, Call IV 7-0659. 37
- BABY CHEST of Drawers** - Edison, Almost new, Gray speckled, \$35, Phone IV 9-6881. 38
- STAMPEE KITTENS** for sale, Very low price, Call OR 7-2504. 39
- REMINGTON, ELEVEN** Portable typewriter, Excellent condition, \$50, 332-6677. 36
- TANDON BICYCLE**, A-1 condition, Hand brakes, \$65, Phone 641-6669. 39

For Sale

- DEERHUNTER SPECIAL**
- Trade in any resalable merchandise on shotgun of your choice, "Wilcox has the guns," new and used, Over 300 guns, all latest styles, calibers including franchised Winchester and Remingtons, Savage, Herrington, Richardson, Ithaca, Italian Beretta, Stevens, Rifle scopes by Redfield, Weaver, Savage, Scope, Mounts, gun cases, large variety of latest ammunition, Small game and deer licenses, 10 used bows, arrows, quivers, camp stoves and heaters, Everything for the sportsman, Easy terms, 10% down. 37
- WILCOX SECONDHAND STORE** 509 E. Michigan Ave. IV 5-4391
Hours daily 8 am. to 5:30 pm. C35
- PROFESSIONAL UNIFORMS**, Used only one month, Size 8, Well-known brand names - Tiffany and White Swan, New - \$17 and \$13, NOW BOTH for only \$15, Three good older ones, very cheap, Call 332-5227 after 5:30 pm. 37
- KENMORE AUTOMATIC** washer, suds-saver, regular and delicate wash cycles, Very good condition, Phone 337-1125. 35
- TRIPLE MALT** machine with cups, Grill, Bun warmer, Two cone dispensers, and car trays, Call IV 4-6889. 38
- PIANO, BABY GRAND**, Wurli-zer, Walnut finish, Very good condition, \$450, Call 627-5541. 38
- GAS REFRIGERATOR** - Servel, Apartment size, Excellent condition, Reasonable, Phone IV 7-3323. 38
- TAPE RECORDER**, Norelco "100", Battery operated portable with case, \$70 or best offer, Call between 6-10 pm, 353-1429. 37
- RCA 21"** table model TV, New picture tube, Guaranteed for one year, Private owner, ED 2-5482. 37
- ENCYCLOPEDIA AMERICANA** 30 volume set, 1964 edition, Shipping boxes never opened, \$300, 355-9890. 39
- BICYCLE SALES**, service and rentals, East Lansing Cycle, 1205 East Grand River, Call 332-8303. C
- WEBCOR IMPERIAL** console record player, Harman-Kardon AM-FM tuner, New condition, \$95, 355-9568; 337-9483. 35
- LADIES 6 1/2"** skirts, size 7 boots and poles, Excellent condition, Used one winter, \$60, 332-1127. 35
- LUGGAGE** - Blue molded Sears Forecast, 27" and weekendender, Excellent condition, Linda, 353-3236. 37
- PORTABLE TYPEWRITER** pica type, \$40, Phone 337-0722, 936 Greenwood Rd., East Lansing. 36

Mobile Homes

- 8' x 27' TRAILER**, Good condition, Two bedrooms, full bath, Call between 1 and 4 at 372-1210. 37
- 10' x 50' MOBILE HOME**, Two bedrooms with extra cupboards, closets, Furnished, Sacrifice for quick sale, 499-1201. 38

Lost & Found

- BROWN WALLET**, papers, watch taken November 11, Keep money, Return to George Jenison Locker Room. 36
- FOUND: A silver charm bracelet** in Erickson Kiva, Call 351-5128. 37
- FOUND: BROWN** frame glasses in tan case with gold trim, Front of Music Building, 355-0410, 36
- LOST: YELLOW** gold Elgin ladies wrist watch, with "twist-o-flex" band, in Women's gym, Phone 353-3125. 39

Personal

Winter Rentals Available at
EYDEAL VILLA & BURCHAM WOODS APTS. for information call ED 2-5041 ED 2-0565

PLEASE RETURN red Schwinn 10-speed varsity bike, Taken from Junior High School during boy scout meeting, Call, Bruce ED 7-1020. 36

Personal

- THINKING OF a pizza party?** Contact Bimbo's Pizza first, Call 484-7817. C37
- WOLVERTINE DORMITORIES**, Your treasury grows with each yearbook sale. See your sales representative. 38
- WATCH YOUR FAVORITE PROGRAMS** on NEJAC TV set. Rent a TV from NEJAC TV Rentals, 17" and 21" table models, only \$7 and \$8 per month, New Zenith 19" portables for \$9 per month, Call 482-0624 for FREE delivery. C
- ORIGINAL PORTRAITS** make wonderful gifts! Pastels, \$8, Charcoal, \$5, Mary Jane Hadwin, OX 9-2987 or OX 4-8641. 35
- NEED ROOM** in Owen Grad Center for girl visiting over Thanksgiving, Will pay, Call 355-8945. 38
- TO WIVES** whose husbands haven't time to explain everything about insurance -- if Bubolz were your agent, he'd carefully explain the policy. Need thoughtful car or house insurance? Bubolz, 332-8671. C35
- Men of Case, Wonders, Wilson**
Rush Conclave tonight, First term Freshmen eligible, 7-10 p.m., Wilson Auditorium
- FOR TOP-NOTCH** protection at rock-bottom rates, it's State Farm Mutual, the world's far-gest auto insurer, Call or see your State Farm agent today, Ask for JIM RYAN, IV 5-7267, In Frandor. C35
- FREE!** A thrilling hour of beauty! For appointment, call 484-4519, MERLE NORMAN COSMETICS STUDIO, 1600 E. Michigan, C37
- SWELL PARTY** at Farm House Fraternity Saturday night, Our activities need dates. Interested? Call Rick, 332-8635. 35

Peanuts Personal

- G24 EXPONDS:** Young men of the world, Listen to our counsel, You too can become lecherous. 35
- WILL ATTEND** McDowell's Sadie Hawkins Friday, Don't forget your 2 o'clock per, C.J. 35

Real Estate

- GOOD HOME** for young family, Three large bedrooms, 11/2 baths, family room, 332-8095. 37

Service

- THESIS PRINTED**
- Rapid Service
- Drafting Supplies
- XEROX COPIES**
- CAPITAL CITY BLUEPRINT** 221 South Grand 482-5431. C37
- TV RENTALS** for students, Economical rates by the term and month, UNIVERSITY TV RENTALS, 484-9263. C
- DIAPER SERVICE**, three types of diapers to choose from, Bulk wash for cleaner, whiter diapers, Fluff dried and folded, Use yours or rent ours, Containers furnished, No deposit, 25 years experience, BY-LO DIAPER SERVICE, 1010 E. Michigan, IV 2-0421. C
- ACCIDENT PROBLEM?** Call Kalamazoo Street Body Shop, Small dents to large wrecks, American and foreign cars, Guaranteed work, 489-7507, 1411 East Kalamazoo. C
- SEWING, AND ALTERATIONS** at a reasonable price, Spartan Village, Call 355-0729. 37
- PIANO TUNING** - Phone IV 9-1939, Huntington Music Company. 38

Moving? Get this Free Book

Gives the facts about moving. Explains the moving estimate. Shows how charges are determined. It's FREE.

484-1421

AGENT FOR NORTH AMERICAN VAN LINES
WORLD WIDE MOVERS
North American Van Lines
World Wide Movers

Service

- TV SERVICE** Calls - \$5, Tubes discounted 25% except picture tubes, Estimates on shop service, ACME TV, IV 9-5009. C
- DIAPER SERVICE**, same diapers returned, Either yours or ours. With our service, you may include two pounds of baby clothes that do not fade. Diaper pail furnished. 38
- AMERICAN DIAPER SERVICE** 914 E. Gier St. IV 2-0864 C
- JOB RESUMES** 100 copies, \$4, ALDINGER DIRECT MAIL advertising, 533 North Clippert, IV 5-2213. C
- METAPHYSICS - INSTRUCTION**, Call 372-1845. 50
- NO RAISE** in prices at WENDROW'S ECON-O-WASH, 32 Speed Clean washers - 20; ten minutes drying - 10¢, 3006 Vine St., 1/2 block west of Frandor, C35
- GERMAN STUDENTS**, Tutoring for graduates and undergraduates, Call Mrs. Mary Fulk, 355-3191. 39

Typing Service

- IBM TYPING** for theses, term papers and manuscripts, Carbon ribbon, Greek and technical symbols, Wide experience in all phases of typing, WONCH GRAFIC, 484-7786. 39
- TERM PAPERS**, theses, Experience, IBM electric, Marianne Harrington, 372-3280. C37
- TECHNICAL WRITING** - Electric typewriter, No pick-up or delivery, OR 7-8335. 41
- TYPING, THESES**, term papers, etc, XEROX copy service, IBM Electric typewriters, 337-1527. C
- TYPING, THESES**, term papers, IBM Electric Typewriters, XEROX Copy Service, 337-1527. C
- EEV TALLMAN**, Your term papers, theses, and dissertations typed in my home, IBM Electric, Call 372-3849. C35

Transportation

- NEW YORK SPECIAL**, Fly home to N.Y.C. for Christmas vacation, Non-stop flight to N.Y.C. (LaGuardia Airport), \$55 round trip, Call now, 337-0089, 3-6 pm, or 332-5973, 6-9 pm. 37
- WANTED, RIDE** for one girl to Illinois game this weekend, Leave anytime Friday, Jennie, 355-7358. 35
- NEED 17 more passengers** going or returning N.Y.C. Thanksgiving, Bus Depot Special, Call Bus Depot, 332-2813. 37
- HELP! TWO desperately** need ride to Illinois game Friday afternoon, Call Judy, 35

Geographer To Investigate Andean Soils

An MSU geographer will study the agricultural potential of the Llanos frontier—a vast grassland area of the eastern Andes—in Colombia.

Dieter Brunschweiler, associate professor of geography, has been awarded a Latin American Studies Center grant to study the area's physical geography and land-use problems. He will leave Nov. 21 on the six-month research assignment financed by the Ford Foundation.

The MSU scientist believes that a thorough study of this former wasteland could provide a pattern for future agricultural development elsewhere in the Colombian and Bolivian lowlands.

Brunschweiler points out that little is known of the topography, climate and soil conditions of the Llanos, and still less, about the capability of the land to produce crops. He expects to compile a land-use inventory of the area.

During part of his Latin American assignment, Brunschweiler will be accompanied by his wife, Tamara, and son, Peer. Mrs. Brunschweiler, who also holds a Ph.D. degree in geography, is head of the acquisitions Department of the MSU Library. She plans to investigate the non-renewable resources of the Llanos during her stay in Colombia.

Conference On Education

The science of learning and its implication for improved classroom teaching will be studied at an MSU conference Thursday and Friday.

The theme of the conference will be, "Teaching and Learning: Using What We Know and Searching for What We Need to Know."

Dr. Herbert A. Thelen, University of Chicago professor of education, will speak on "Must we teach ignorantly?" or "The Stubborn Facts About Teaching Learning Process."

"What Should We Be doing?" is the subject of Dr. Earl C. Kelley, professor of education at Wayne State University.

Dr. Ned Flanders, University of Michigan professor of education and research consultant, will speak on "Our Responsibility to Do Biased Research."

NAACP Hears Of Placement

Opportunities are open to all Negroes but they must be ready to compete for jobs.

That was the consensus of three men in the field of college relations who spoke at a conference of the National Association for the Advancement of Colored People NAACP Monday night.

Robert Stargel of the Kroger Co., advised students to study general employment trends and decide which fields of employment are growing before deciding on a career field.

Charles W. Wexler of the Chrysler Corp. assured Negro students that they are earnestly wanted and needed in American industry today.

"Industry is interested in hiring all capable and qualified individuals who come to the placement office," he said. It is through the placement bureau that total merit employment becomes a reality.

Wanted

TALENT NEEDED for Spartan Wives hootenanny, Nov. 21, at 9 p.m., Student Services Lounge, Kathy, 355-3164. 36

MALE ROOMMATE wanted to share Cedar Village apartment. Seven month lease. Call 351-4427. 35

BACHELOR PROFESSOR wants regular housecleaner for attractive Okemos home. Own transportation needed. 355-4666 or ED 2-0066. 37

STEREO RECORDER or tape deck (not a portable). Can trade new stereo phonograph. ED 2-009. 36

BABYSITTING in my home. Saturdays for working mothers. Experienced and reliable mother. Phone IV 9-0361. 37

WANTED: To rent garage. Vicinity of 400 block Ann St. Call ED 2-2490 after 6 p.m. 37

NEEDED TWO roommates to share cabin for entire winter. Across from Boyne. 332-4198 after 6 p.m. 38

WANTED: To rent garage. Vicinity of 400 block Ann St. Call ED 2-2490 after 6 p.m. 36

Placement Bureau

Nov. 23, MONDAY

Aetna Life Insurance Co: All majors of the College of Business, Arts and Letters, Communication Arts and Social Science (B).

Alcoa: Accounting and Finance (B,M).

Beecher Schools: Home Economics and Vocational Music, Elementary Education (B,M), (December and March grads.) M/F.

Clio Area Schools: Elementary Education, Math-Science, English-Social Studies, (December and March grads.) M/F.

John Deere & Co: Mechanical, Agricultural Engineering, (B,M,D), Math (B,M), Accounting, all majors of the College of Business (B), (December and March grads.) M/F.

Detroit District - U.S. Army Audit Agency: All majors of the College of Business (B,M,D) (December and March grads.) M/F.

East China Public Schools: Early and Later Elementary Education, Elementary Vocational Music (Itinerant), Elementary Art (Itinerant), Elementary Physical Education (Itinerant), Secondary Vocational Homemaking, Physical-Chemistry (Combination) (B), M/F.

Great Lakes Chemical Corp: Chemists (B,M,D).

Harper Creek Community Schools: Elementary Education (B,M), M/F.

Livonia Public Schools: All Elementary, Elementary Vocational Music Consultant (B,M), Senior High English (B), (December and March grads.) M/F.

Mark Lippman Service, Inc., and Guardsmark, Inc: Industrial Security, (December and March grads.) M/F.

Potter Portland Cement: Chemical Engineers (B).

Pot Latch Forest Inc. Maxwell Division: Packaging Technology (B).

Standish - Sterling Community Schools: English (Secondary), Vocational Music, Vocational Agriculture and Industrial Arts (B), culture and Industrial Arts (B,M) (December and March grads.) M/F.

Texasco, Inc.: Mechanical, Civil, Chemical and Electrical Engineers (B).

U.S. Department of Business Economics: Economics (B), (December and March grads.)

U.S. Public Health Service, Venereal Disease Branch: All majors of the College of Natural Science, English, Journalism, Foreign Language, Philosophy, Psychology, all majors of the College of Social Sciences, Public Health, Public Administration (B), (December and March grads.)

The University of Akron: Biology, Chemistry, English, Psychology, (December and March grads.)

Walt Disney's TRUE-LIFE ADVENTURE Festival

The most honored series in motion picture history!

NOW PLAYING! THE VANISHING PRAIRIE

Thundering Drama of the Great American Plains!

With "MYSTERIES OF THE DEEP" And a Walt Disney Cartoon

Look to the name Walt Disney for the finest in family entertainment!

STATE THEATRE E. LANSING

From 7 p.m.-9:05 & 3:05

Feature 7:55, 9:55 p.m.

MSU Foreign Film Series

presents

the lovers of teruel



a film by RAYMOND ROULEAU

starring LUDMILA TCHERINA

Three of Photography CLAU DE RENOU

Documentary by MILAN STANISLAV

★★★★★

CINEMA ART IN ITS MOST MODERN ASPECT!

Kate Cameron Daily News

Wed.-Fri., Nov. 18-20

7 & 9 p.m.

FAIRCHILD THEATRE

Admission: 50¢

Attendance Increases For Carnival

Between 140 and 180 students expressed interest in joining various clubs and organizations at the AUSG-sponsored Activities Carnival in the Union Monday night.

"This was far more than we had expected," said Jim Simpson, AUSG organizations bureau director and Activities Carnival chairman.

He estimated total attendance at between 750 and 1,000.

The carnival, moved from under Spartan Stadium to the Union this year, seemed far more successful in its new location and format, Simpson said.

"We think this is the only way it can be run in the future," he commented. "We were testing ways of presenting an all-University event, and I think we learned things that will be helpful to other organizations as well as the Activities Carnival."

He added that the organizations bureau will finish a complete report on the advantages and disadvantages of the new structure in about a week.

Avant-Garde Film Shown In Fairchild

An intermingling of drama and dance, of fantasy and reality, "The Lover's of Teruel" will run 7 and 9 p.m. Wednesday and Friday in Fairchild as part of the foreign film series.

French prima ballerina-actress Ludmilla Tchérina portrays the young girl who finds the tragedy of the Spanish legend she is enacting with a ballet troupe being reproduced in her own life.

Past, present and future merge in the semi-realistic drama.

Avant-garde and traditional techniques combine to produce a movie that makes bold use of symbolism and surrealism. Color or fits the drama: pastel, blood-red or black and white. A dream sequence uses super-imposed and expressionistic images.

After one and-a-half years of preparation, it took one-half year to put the story on film.

Bang-Up Theft

Campus police are investigating the theft of a set of drums, valued at \$500, from a car in the parking ramp.

Robert K. Miller, Benton Harbor senior, told police a snare, base and two tom-tom drums, with carrying cases, two cymbals and three stands were taken from his car, which was parked on the third level of the ramp, late Friday or early Saturday.

Film Scheduled

In conjunction with Peace Corps Week the film "Mission of Discovery" will be shown on Channel 10 television Thursday at 11:30 a.m.

IM News

(continued from page 6)

1--Phi K. Tau-A.T.O. (winner meets L.C.A.)

2--Sigma Chi-Sigma Nu

3--B.T.Pi-D, Chi

4--S.A.E.-D.T.D. (winner meets Z.B.T.)

5--Phi G. Delta-S.A.M. (winner meets Theta Chi)

WOMEN'S

Sorority Volleyball

Time Court 1

7:00--K.K.G.-A.D. Pi

7:45--Sig. D. Tau-Phi Mu

Court 2

7:00--A. Chi O-K.A.T.

7:45--A. O. Pi-Z.T.A.

Court 3

7:00--D.Z.-Alpha Phi 2

City Merchants Push Downtown Expansion

East Lansing businessmen continued to push for expansion of the downtown shopping area at Monday's meeting of the East Lansing City Council.

Re-zoning of the 500 block of Albert Avenue from R-4 (multiple dwelling) to B-2 (commercial) was requested in a petition signed by 27 property owners.

The need for expansion of the B-2 zone to accommodate the growth of retail stores in the business district was spelled out in a letter from Robert C. Metzger, one of the Albert Avenue property owners.

Councilmen referred the petition and letter to the Planning Commission, as they did a similar request from the Chamber of Commerce at the last meeting.

The council has postponed action on the subject pending a study of the downtown area and

available commercial property in the city. The Albert Avenue area consists of homes converted to rental units immediately east of the business district.

In other action Monday, the council passed an anti-harassment telephone call ordinance. The new law makes calling anyone more than once for the purpose of harassment punishable by \$100 fine or 90 days in jail or both.

A recent rash of nuisance phone calls to various citizens gave rise to the new law. City Manager John M. Patriarche reported on the future of East Lansing's elm trees, and said that Dutch elm disease is rapidly depleting the tree population. He said that spray is controlling the spread of the disease, but not eliminating it.

Married Couples To 'Sing Along'

Married couples will get a chance to out sing each other at a Hootenanny sponsored by Spartan Wives Saturday from 9 to 11. The event will be held at the Student Services Lounge.

Admission charge is 25 cents per couple. All interested married couples are invited to attend. Any person or group of people interested in entertaining at the Hootenanny may call Kathy White at 355-3164.

Byrnes Sells Out

Byrnes Drug Store has sold its prescription to Rouser's Drug Stores of Lansing.

Located in Lansing at the Medical Dental Building, 2909 E. Grand River and downtown at 123 South Washington, the Pharmacy will make free deliveries to East Lansing.

Byrnes is going out of business after 35 years.

Re-Evaluation

(continued from page 1)

difficult to exert on the all-university level, the committee feels.

Problems also arise in selecting representative students for student-faculty committees, the exact purposes of which are still undefined.

"We hope that student participation in academic problems and decisions can be increased," Bruce Osterink, committee chairman, says.

Osterink points out that the primary aim of the committee is to find a coordinated system to eliminate damaging competition between groups.

Committee members are Jack Armistead, former junior class president; Rick Baugh, president of Delta Upsilon social fraternity; Elaine Ellis, former Women's Inter-residence Hall Council president; Jim Jesse, Armstrong Hall president; Orleen Manchur, a member of several class councils; Jeff Puryear, administrative secretary of AUSG; Dick Sawley, Union Board president; Howie Wilchins, speaker of Student Congress; and Gary Wright, Men's Halls Association president.

OLIN HOSPITAL REPORT

Admissions include: Dennis Piana, Detroit junior; Trenton Batson, East Lansing graduate student; Jill Van Dusen, Grand Rapids junior; Jacquelyn Boyle, Muskegon sophomore; and Deborah Percy, Kalamazoo junior.

Also admitted were: Jerry Larson, Cadillac freshman; Helen L. Johnson, Des Moines, Iowa, senior; Pam McCain, Lansing freshman; Ardeshir Ghaderi, East Lansing graduate student; and William Weiss, St. Clair Shores freshman.

MICHIGAN THEATRE

482-7311

LAST TWO DAYS

Feature Times Today...

1:15-3:15-5:15-7:20-9:20

ROCK HUDSON / DORIS DAY / TONY

SEND ME NO FLOWERS

Technicolor

TOMORROW

SUPER BARGAIN DAY

All Day Preview - 2 - Features

it starts off with a roar

that rips the screen apart!

GLADMER THEATRE

25¢ to 5:30 - \$1.00 After

NOW THRU SATURDAY

Feature At 1:10-3:10

5:10-7:12-9:15 P.M.

Four Men Stalking The Apache Nation!

Byrnes Sells Out

Byrnes Drug Store has sold its prescription to Rouser's Drug Stores of Lansing.

Located in Lansing at the Medical Dental Building, 2909 E. Grand River and downtown at 123 South Washington, the Pharmacy will make free deliveries to East Lansing.

Byrnes is going out of business after 35 years.

Byrnes is going out of business after 35 years.

Byrnes is going out of business after 35 years.

Byrnes is going out of business after 35 years.

Byrnes is going out of business after 35 years.

Byrnes is going out of business after 35 years.

Byrnes is going out of business after 35 years.

Byrnes is going out of business after 35 years.

Byrnes is going out of business after 35 years.

Byrnes is going out of business after 35 years.

Byrnes is going out of business after 35 years.

Byrnes is going out of business after 35 years.

Byrnes is going out of business after 35 years.

Byrnes is going out of business after 35 years.

Byrnes is going out of business after 35 years.

Byrnes is going out of business after 35 years.

Byrnes is going out of business after 35 years.

Byrnes is going out of business after 35 years.

Byrnes is going out of business after 35 years.

Byrnes is going out of business after 35 years.

Byrnes is going out of business after 35 years.

Byrnes is going out of business after 35 years.

Byrnes is going out of business after 35 years.

Byrnes is going out of business after 35 years.

Byrnes is going out of business after 35 years.

Byrnes is going out of business after 35 years.

Byrnes is going out of business after 35 years.

Byrnes is going out of business after 35 years.

Byrnes is going out of business after 35 years.

Byrnes is going out of business after 35 years.

Byrnes is going out of business after 35 years.

Byrnes is going out of business after 35 years.

Byrnes is going out of business after 35 years.

Byrnes is going out of business after 35 years.

Byrnes is going out of business after 35 years.

Byrnes is going out of business after 35 years.

Byrnes is going out of business after 35 years.

Byrnes is going out of business after 35 years.

Byrnes is going out of business after 35 years.

Byrnes is going out of business after 35 years.

Byrnes is going out of business after 35 years.

Byrnes is going out of business after 35 years.

Byrnes is going out of business after 35 years.

Byrnes is going out of business after 35 years.

Byrnes is going out of business after 35 years.

Byrnes is going out of business after 35 years.

Byrnes is going out of business after 35 years.

Byrnes is going out of business after 35 years.

Byrnes is going out of business after 35 years.

Byrnes is going out of business after 35 years.

Byrnes is going out of business after 35 years.

Byrnes is going out of business after 35 years.

Byrnes is going out of business after 35 years.

Byrnes is going out of business after 35 years.

Byrnes is going out of business after 35 years.

Byrnes is going out of business after 35 years.

Byrnes is going out of business after 35 years.

Byrnes is going out of business after 35 years.

Byrnes is going out of business after 35 years.

Byrnes is going out of business after 35 years.

Byrnes is going out of business after 35 years.

Byrnes is going out of business after 35 years.

Byrnes is going out of business after 35 years.

Byrnes is going out of business after 35 years.

Byrnes is going out of business after 35 years.

Career Opportunity

UNITED STATES PUBLIC HEALTH SERVICE

VENEREAL DISEASE BRANCH - COMMUNICABLE DISEASE CENTER

We are going to eradicate syphilis in the United States.

We need people who want immediate job involvement, interesting work, an outlet for



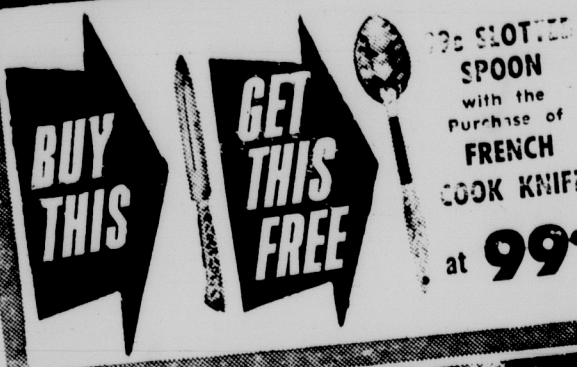
This is PACKER

WHERE NICE THINGS COST UP TO 20% LESS... EVERYDAY

STORE HOURS: Mon.-Sat. 9-9; Sun, 9-6



STEAK SALE!



U.S.D.A. Choice
Naturally Tender Table Trimmed

98¢
lb.

U.S.D.A. Choice

Club Steak

98¢
lb.



U.S.D.A. Choice
Naturally Tender Table Trimmed

All
Center
Slices

78¢
lb.

U.S.D.A. Choice—Center Blade Chuck Cut
Swiss Steak

58¢
lb.



U.S.D.A. Choice
Naturally Tender Table Trimmed

88¢
lb.

U.S.D.A. Choice—Center Round Bone Cut
Swiss Steak

68¢
lb.

Prices effective thru Sunday, Nov. 22, 1964. We reserve the right to limit quantities.

Hickory Smoked Sugar Cured

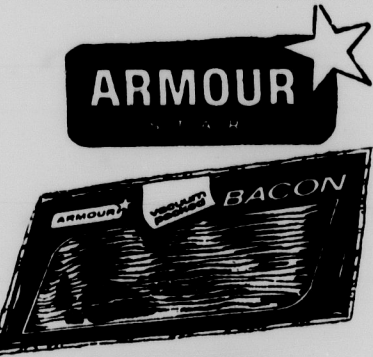
ARMOUR

Smoked Hams

Select Shank **38¢** 5 to 7 Lb. Average

Boneless PORK ROAST SUPREME Boston Butt Style **48¢** lb.

Cut from Young, Tender Porks



- | | | | |
|-----------------|---------------------------------|---------------|------------|
| Skinless Franks | Country Kitchen | 1-lb. Pkg. | 48¢ |
| Roll Sausage | Gordon's Pure Pork | 3 1-lb. Rolls | 98¢ |
| Bologna | Country Kitchen Sandwich Sliced | 1-lb. Pkg. | 48¢ |
| Boiled Ham | Tiger Town Lean Slices | 1/2-lb. Pkg. | 58¢ |

Armour Star or Swift Premium

Sliced Bacon

1-lb. Pkg. **59¢**

- | | | | |
|-----------------|----------------|-----|------------|
| Cod Fillets | Fresh Boneless | Lb. | 58¢ |
| Haddock Fillets | Fresh Boneless | Lb. | 68¢ |

- | | | |
|---------------------------------------|------------------|------------|
| Gaylord Creamery Butter | 1-lb. Print | 59¢ |
| Thanksgiving Favorite Stokely Pumpkin | 1-lb. 13-oz. Can | 19¢ |
| Indian Trail Jellied Cranberry Sauce | 1-lb. Can | 19¢ |

Pure Vegetable Shortening

Crisco 3-lb. Can **59¢**

Limit One—No Coupon Needed

Reg. or Drip Grind Chase & Sanborn or

Hills Coffee 1-lb. Can **59¢**

Limit One—No Coupon Needed

Food Club White-Yellow-Devils Food

Cake Mix 1-lb. 3-oz. Pkg. **19¢**

Limit One—No Coupon Needed

Washday Miracle

Giant Tide 3-lb. 1-oz. Pkg. **59¢**

Limit One—No Coupon Needed

U.S. No. 1 Kiln Dried Sweet Potatoes Candy

YAMS Color Added **2 lbs. 15¢**

Kool Krisp California

Pascal Celery Large Green Stalks ea. **25¢**

Save Cash!

- Pioneer Sugar 49¢
- Pure Granulated, 5-lb. bag.
- Stokely Corn 15¢
- Cream or Whole Kernel, 1-lb. 1-oz. can.
- Stokely Peas 19¢
- Honey Pod, 1-lb. 1-oz. can.
- Tomato Juice 3/89¢
- Stokely, One Quart, 14-oz. can.
- Cul Green Beans 21¢
- Stokely, 15 1/2-oz. can.
- Stokely Cherries 2/37¢
- Red, Sour, Pitted, 1-lb. can.
- Jell-O Gelatin 8¢
- Assorted Flavors, 3-oz. pkg.

Compare!

WHY PAY MORE

- | | |
|---|---|
| Facial Tissue 21¢ | Biscuits Buttermilk & Sweetmilk 3/25¢ |
| Kleenex, Scotties, Puffs, 400-ct. pkg. | Country Kitchen, tube of 10 |
| Baby Food, Strained . . 3/25¢ | Mel-O-Crust Buns 2/39¢ |
| Heinz-Gerber-Beechnut, jar | Hot Dog & Hamburger, 8-ct. pkg. |
| Girard Olives 33¢ | Dutch Apple Pie 49¢ |
| Jumbo ripe, 8 1/2-oz. can | Farm Crest, 20-oz. pkg. |
| Aunt Janes Dills 45¢ | Heinz Ketchup 19¢ |
| Polish & Kosher, one quart, 16-oz. jar. | Rich Tomato, 14-oz. bottle. |
| Cheese Slices 59¢ | Miracle Whip 44¢ |
| Country Kitchen, American & Pimento | Kraft's Salad Dressing, quart jar. |

Save 12¢ on 2

Save 13¢

IN THE FRANDOR SHOPPING CENTER AND 5020 S. CEDAR LANSING