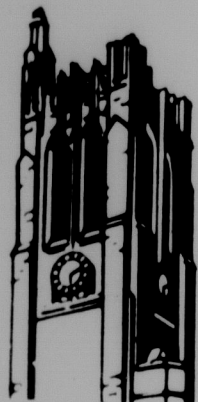


MICHIGAN
STATE
UNIVERSITY



STATE NEWS

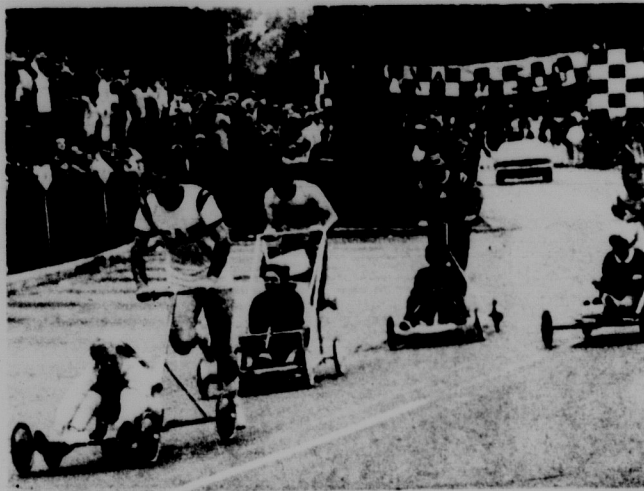
East Lansing, Michigan

Friday, March 2, 1969

GREEK WEEK '69



DOUG
HUSTON



Α Alpha
Β Beta
Γ Gamma
Δ Delta
Ε Epsilon
Ζ Zeta

Η Eta
Θ Theta
Ι Iota
Κ Kappa
Λ Lambda
Μ Mu

Friday, May 2

Fellow Greek,

This week is a time to reassess our goals and our aspirations. Membership in our chapters has provided us with many unique opportunities for broadening our education. Education, though, cannot stop at the door of the chapterhouse. Rather, one's education should grow, thrive and prosper among one's brothers or sisters.

Let us take time out from this week of fun and think about the problems that are facing us in today's society. We are the leaders on this campus and we must prepare ourselves for leadership in the larger society, outside of Michigan State University.

So, let's fire up and support all the activities of Greek Week but let's not stop there. Let's go on and prove that we deserve the position of leadership that we now occupy.

The Executive Council of
Pan Hellenic and
Interfraternity Council

Ν Nu
Ξ Xi
Ο Omicron
Π Pi
Ρ Rho
Σ Sigma

Τ Tau
Υ Upsilon
Φ Phi
Χ Chi
Ψ Psi
Ω Omega



Greeks set 'happening time'

By BARBARA PARNES
State News Staff Writer

The end of World War II brought the men back to campus and marked the creation of a traditional MSU event—Greek Feast, a forerunner of today's Greek Week.

More than 25 years after the creation of this event, Greeks at MSU still celebrate the feast along with a variety of other activities. "It's a Happening Time—Greek Week '69," as the theme of the week suggests.

This year for the first time,

Greek Week will include an all-Greek TG at the Gables. Students will also be seeing the annual torch run, the Sammy tricycle race, Greek Sing, the AEPi art show and the "Ugliest Greek" contest.

"It's a Happening Time—

Greek Week '69" was chosen as the theme "primarily because it rhymed," Kathy MacDonald, Lansing junior and co-chairman of Greek Week, said.

Miss MacDonald added, however, that this theme is pertinent to 1969.

segments of the University, not only Greeks.

"This year," Stellingworth said, "Greek Week has changed. We're trying to put Greek Week into the University. We're trying to make it apply more to the whole campus and not just to the Greek system."

"It's not only a 'happening time' for Greeks but also for non-Greeks," Miss MacDonald said.

Greek Week has become more involved with the whole University through joint ventures of the Greek units with ASMSU Pop Entertainment and Great Issues and the MSU Volunteer Bureau. For the first time Greek Sing has been opened to all students free of charge. The frisbee contest will once again be open to non-Greeks.

Although Greek Week is primarily a "publicity stunt" to promote the Greek system at MSU, its other aim is to provide an opportunity for Greeks to get together and work as Greeks in one unit, Miss MacDonald said.

Light-foots prepare to relay in torch run

By ROSA MORALES
State News Staff Writer

The Greeks have a word for the 1969 torch run—originality—for the method of passing the torch.

The Greek units taking part in the torch run Saturday are required to have an original costume and method of passing the torch. Points will be given to the participants on the basis of original costume and unique method of passing the torch.

A trophy will be awarded to the Greek unit with the most cumulative points earned during Greek Week activities.

Marti Roach, Dearborn junior and special events co-chairman, said that traditionally the torch run has been the kick-off activity for Greek Week.

Popular Entertainment tonight, with both the Classics IV and the First Edition, is the

kick-off for Greek Week, Miss Roach said.

Since Kiddie Day is going on simultaneously with the torch run, the torch will pass to the units where the sororities and fraternities are entertaining the children.

"The representatives from each sorority and fraternity will have to work together to develop an original way of passing the torch to the next house," Miss Roach said.

Last year the torch run went to each Greek unit and there was no coed involvement in passing the torch, Miss Roach said. Each house concentrated just on its own part of the run and did not get to mix with the other Greek units.

"This year our goal is to integrate with the different Greek units and get to know them while working together on the torch run," Miss Roach said.

The starting point for the torch run will be at the Delta Upsilon fraternity house and finish at the Phi Delta Theta fraternity house.

Edwin Reuling, vice president of student affairs and Inter-Fraternity Council adviser, will be among the judges for the torch run.

Topsⁱⁿ Knits

"old colony"
Cotton Knit
TOPS

From \$4⁰⁰

Sleeveless, short sleeved or long sleeved stripes or solid colors

OPEN: Wed. & Fri. 'til 9 P.M., Other Nights 'til 5:30

MARION'S

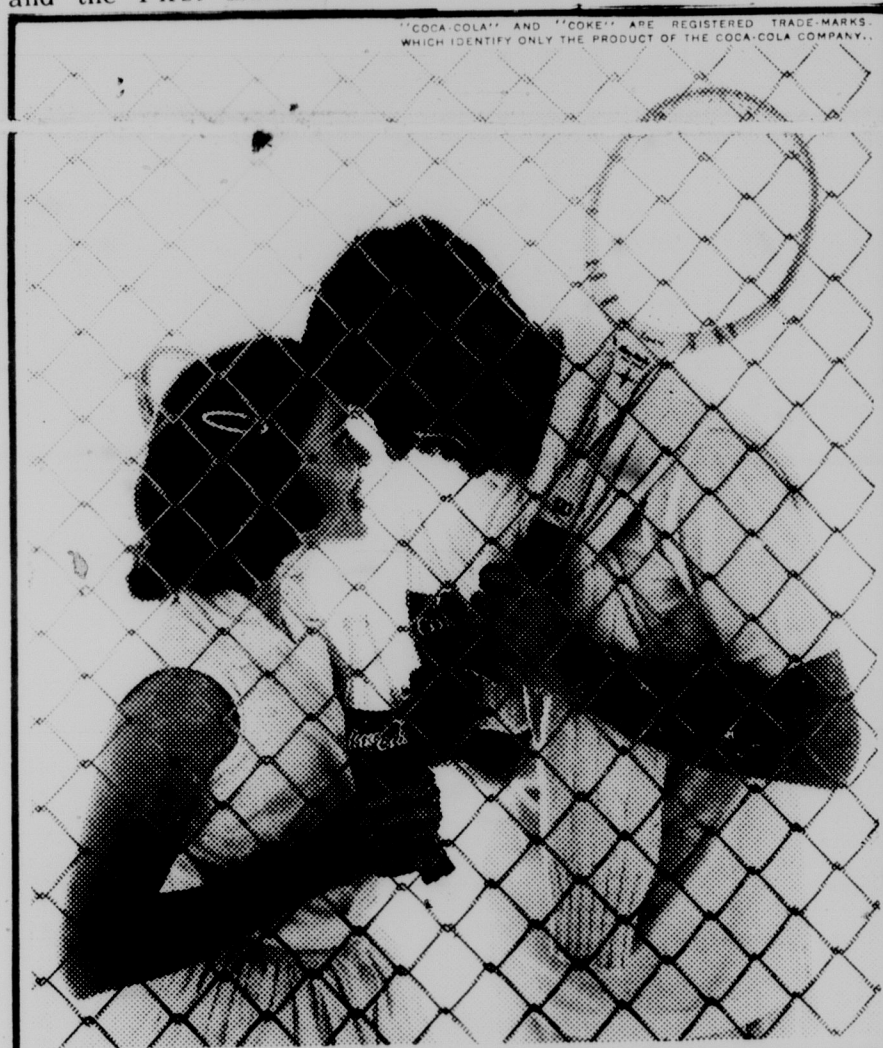
APPAREL

351-7224

1331 E. Grand River "Brookfield Plaza"

--East Lansing--

in the East Lansing State Bank Building



Refreshment anyone?
Game goes better refreshed.
Coca-Cola! With its lively lift, big bold taste,
never too sweet . . . refreshes best.

things go
better
with
Coke



Bottled under the authority of the Coca-Cola Co. by:
Coca-Cola Bottling Company of Michigan

•Ye Olde Notice•



HAPPINESS IS A PLACE CALLED SHAKEY'S

•PIZZA PARLOR & YE PUBLIC HOUSE•

6527 S. Cedar 393-3250

AT SHAKEY'S WE SERVE FUN... ALSO PIZZA



PLASTIC UFO CONTEST

Wham-O's barrage fraternities

By ROSA MORALES
State News Staff Writer
What is round, spins in the
air and attacks men?
Is it a bird, is it a plane?

No, it's a frisbee. This circular plastic wonder of sports, 10 inches in diameter, will be the flying object at the 1969 frisbee contest Sunday at the

men's I.M. field from noon to 2 p.m.

The official tournament frisbees are the black and white, 108 gram Wham-o models supplied by the Phi Delta Theta fraternity.

Dave Cook, Arlington Heights, Ill., sophomore and game chairman, said that the contest will be a single elimination contest between five-men teams made up of men from on and off campus living units.

The frisbee playing field is 75 yards wide with no length boundaries. Two restraining lines on the ground, 36 yards apart, separate the two teams.

The object of the game is to throw the frisbee hard and fast, with one hand, into the other team's territory in such a way that they won't catch it, Cook said.

The only restriction is that

the players must throw the frisbee with one hand and the other team's players catch it with one hand before it hits the ground.

"Throwing hard and fast, about two or three feet off the ground, is about the best way to score a point," Cook said. "Such throws are hard to catch. The catch must be made before the frisbee bounces off the ground."

If it is thrown high the wind carries the frisbee out of bounds which means a point for the other team, he said.

Also if a frisbee comes in at more than 45 degrees to the ground, it is declared a "bomber" and the throw will be discounted. When a throw is made successfully and caught by the other team, no point is made.

The only points made are those made on errors, such as a bad throw or a missed catch.

The five players rotate to serve the frisbee, but each man has a special position, such as a catcher, in the defense, Cook said. The goal is 21 points in each session.

"It's a hard game to play perfectly and the sessions don't last very long," Cook said.

No entry fee is required and the final tournament between the last two teams will be played on the field. A public address system will be used for a play-by-play account.

All plays will be officiated by two judges located on opposite sides of the field.

The frisbee contest is sponsored by the Phi Delta Theta fraternity in conjunction with Greek Week.

Greeks to serve community; convert brewery to Boys' Club

With the Greeks' well-known love for alcoholic beverages, some may find it surprising that the Greek community is tearing down a brewery this year as the Greek Week community project.

The brewery, located on Center Street in Lansing, is being converted into the home of the Lansing Boys' Club.

An estimated 2,000 fraternity men and sorority women will

paint both the inside and outside of the building, replace ceilings, tear down old walls and erect new ones and block up broken windows.

The clean-up operation will take place between 9:30 and 11:30 a.m. and 2:30 and 4:30 p.m. from May 5 through 9.

The MSU Volunteer Service is supplying five buses to transport Greeks to and from the project.

OPEN HOUSES ARE AN INVASION OF YOUR RIGHT TO PRIVACY

BY EAST LANSING MANAGEMENT CO.

Residents of dormitories, fraternities, sororities, etc. are flocking to apartments this year to avoid what will approach insanity. Eager to be able to take a shower in private and read the latest serious novel in their "grubbies", many adults are finding that privacy is the foremost feature in apartment-living.

The parking facilities of apartment buildings are far superior to those of most fraternities, but are still too crowded to allow hordes of

guests. Muscled managers are employed to keep the neighbors from getting out-of-hand. Apartment doors have locks to keep out visitors during private times when residents want to be alone.

Apartment buildings are located more than a mile from campus to make them difficult to find and secluded in suburbs to blend into the scenery.

See a model apartment at Burcham Woods on Burcham Drive between 1 and 4. Call during those hours for information at 332-3711. Visit us alone!

'Jam' packed week grooves with concert

The schedule for Greek Week 1969 is as follows:

Friday, May 2

8 p.m. -- ASMSU Pop Entertainment-Greek Week featuring The Classics IV and The First Edition, Jenison Field House

Saturday, May 3

10 a.m.-noon -- Kiddie Day parties
10:30 a.m.-11:30 -- Torch Run, starting at the Delta Up-station house

1-3 p.m. -- Sigma Alpha Mu tricycle race, parking lot across from Anthony Hall

3-4 p.m. -- Alpha Delta Pi Pyramid Contest, Wells Hall Court.

Sunday, May 4

Noon-2 p.m. -- Phi Delta Theta frisbee contest, South Campus I.M. field

2 p.m. -- Greek Sing -- Auditorium

Monday, May 5

10 a.m. - 4 p.m. -- Com-

munity Project, Center Street
7:30 p.m. -- ASMSU Great Issues -- Greek Week featuring Ralph Nader, Auditorium
Voting for Ugliest Greek starts today and extends through May 9, Union concourse.

Tuesday, May 6

10 a.m. - 4 p.m. -- Community Project, Center Street
7 p.m. -- IFC sponsored Track Meet, preliminaries, MSU track

Wednesday, May 7

10 a.m. - 2 p.m. -- Community Project, Center Street
2-5 p.m. Alpha Epsilon Phi Art Show, Grand River Avenue
8 p.m. -- Greek night at the Gables

Thursday, May 8

7 p.m. -- Track Meet finals, East Lansing High School

Friday, May 9

10 a.m. - 4 p.m. -- Community Project, Center Street

Saturday, May 10

3 p.m. -- Greek Feast, East Lansing City Park.



GOLDEN EAGLE

A GREEK FEAST AT THE
TEMPLE OF
THE GOLDEN EAGLE

Golden Eagle Restaurant

At the Capitol City Airport Where You Can Watch the Eagles Land, While You Enjoy the Best Feast and Service Since the Golden Days of Ancient Greece.

Dinners are \$3.75 -- \$5.95 -- Complete

Dining Room Open:

Saturday 5:00 p.m.

Sunday 12:30 p.m.

FREE PARKING

Liquor Served

After 2:00 on Sun.

WELCOME ABOARD

For Reservations
call 485-1764

There is a shop which will sew what you want.
Once Upon a Time...
233 Abbott 351-4699



Barbara Box
Wig & Hair
Stylists

Call ED 2-4080
for a free wig
consultation.

Events planned since fall

By JANE SCHOLZ
State News Staff Writer

This year's Greek Week Executive Board is not hesitant to call itself the hardest working group on campus.

The board's 18 members have been at work since fall term printing posters, finding judges for contests, selling advertisements, finding sponsors and, above all, spending money. (as Neal Bardach, Theta Chi, Indianapolis, Ind., junior, will tell you.)

The general co-chairmen for the event, Kathy MacDonald, Kappa Delta, Lansing junior, and Bob Stellingworth, Delta Upsilon, Grand Rapids junior, selected other board members and supervised the work of the board.

When Greeks sit down to eat that luscious chicken dinner this Sunday, they can thank George Hill, Delta Upsilon, Wilmington, Del., senior, and Barb Woodward, Sigma Delta Tau, Chicago, Ill., junior, Greek Feast co-chairmen, for the meal.

Greek Sing chairmen Nancy Glaser, Pi Beta Phi, Pittsburgh, Pa., sophomore, and Dale Nye, Alpha Gamma Rho, St. Joseph sophomore, are looking forward to awarding the trophies to the winning groups in their "Sounds of Color" program.

Chuck Brooks, Beta Theta Pi, Birmingham junior, and Mary Lou Jakubiec, Delta Gamma, Arlington Heights, Ill., senior, are in charge of Kiddie Day.

The posters and A-frames which decorate the campus advertising Greek week are the product of the work of Jo LaFave, Zeta Tau Alpha, Rochester senior, art chairman, and Jane Scholz, Pi Beta Phi, Toledo, Ohio junior, and Jack Beras, Delta Sigma Phi, Southfield junior, publicity chairmen.

Marti Roach, Kappa Delta, Rochester junior, has one of the most difficult jobs on the board. As special events chairman she is in charge of coordinating the Sigma Alpha Mu tricycle race, the Alpha Ep-

silon Phi art show, the Phi Delta Theta frisbee-throwing contest, the Greek TG and the track meet.

Bob Blackmer, Lambda Chi Alpha, Milan senior, and Geri Purdy, Alpha Chi Omega, Niles senior, have organized the kick-off program for the week's festivities. They are responsible for scheduling speaker Ralph Nader, automobile safety expert, and organizing house functions following the speech.

In charge of community projects this year are Kirk Faber, Phi Gamma Delta, Greenville senior, and Lois Schultz, Kappa Delta, Grand Rapids senior.

Canvassing East Lansing merchants for advertising and planning the Greek Week booklet are the main jobs of Laurel White, Kappa Kappa Gamma, Cincinnati, Ohio, sophomore and Gwen Van Drop, Delta Delta, Zeeland junior.

As committee heads these Greeks have planned and organized Greek Week activities, but as all the chairmen are ready to point out, none of the work could have been done without the "leg men".



Greek leaders

The executive council members are, from left to right: Marilou Jakubiec, Cathy Bohm, Marti Roach, Kirkwood Faber, Bob Blackmer, Chuck Brooks, Dale Nye, Bob Stellingworth. Sitting from left to right are: Jane Scholz, Barbara Woodward, Lois Schulz, Kathy MacDonald.

State News photo by Bill Porteous

Spooky 'Classics' to join 'First Edition' in concert

The Classics IV and the First Edition will kick off Greek Week 1969 at 8 tonight in a Popular Entertainment concert at Jenison Fieldhouse.

The First Edition is not a new group to the East Lansing area, having appeared to sell-out crowds at Grandmother's a year ago. The entire group, originally from California, were all former members of the New Christy Minstrels.

They have recorded such hits as "What Condition My Condition Was In" and their current single, "But You Know I Love You." The First Edition has

appeared frequently on the Smothers Brothers Show and has regularly toured college campuses.

The Classics IV have also had several television appearances and are well known through their hit songs, "Spooky," "Stormy" and their recent smash, "Tracts."

The concert is a joint effort

of Greek Week and the ASMSU.

Another innovation of the concert is that members of fraternities and sororities are able to attend the concert free. Non-Greeks are able to purchase tickets for \$2 and \$3 at Marshall Music, Campbell's Suburban Shop and the Union Ticket Office.

A X A

Jr. 500

May 17

West Circle Drive

1:30 P.M.

MOTHER'S

DAY

is

May 11th

on any

Calendar

Σ HOT

"When you think of Cards"

CARD SHOP

Across from Home Ec. Bldg.

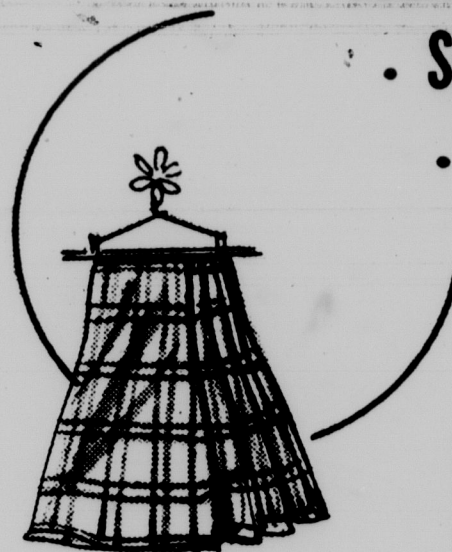
309 E. Grand River

Ph. 332-6753



FOR ALL YOUR
GREEK WEEK
ACTIVITIES. . .

- Coulottes
- Skooters
- Skirts
- Slacks



Wide Selection
of Colors and
Patterns

\$8 to \$14

Wanda Hancock
203 East Grand River
Open Wednesdays 7:30 - 9

Color highlights Greek Sing

By BECKY NIETERT
State News Staff Writer

Don't be surprised if you overhear a sorority woman or fraternity man humming bits and phrases of popular show tunes during the next week.

The Greeks are preparing for their annual Greek Sing, which will be held Sunday from 2 to 4 p.m. in the Auditorium.

The theme of this year's competition is the "Sound of Color." Each participating group had to pick a color and revolve their whole show around it. Songs must reflect the color chosen and costumes of the color must be worn by everyone.

Greek Sing is a competition among Greek units which has three areas of competition: the sorority division, the fraternity division, and the coed division.

Twenty-three entrants participated in the preliminaries on April 20. They were narrowed down

to 12 entrants on the basis of a point rating system by the judges.

The finalists will now engage in extensive practice for the final competition. In the finals the groups will be judged on the basis of their singing, staging, costumes and choreography. Judges for the final competition will be professors from the Dept. of Music.

The sororities participating in this year's sorority division include Alpha Delta Pi, Alpha Gamma Delta, Alpha Kappa Alpha, Alpha Xi Delta and Pi Beta Phi.

The only fraternity participating in the final competition is Lambda Chi Alpha because the other two fraternities who participated in the preliminaries failed to achieve enough points to go on to the finals.

Entrants in the Greek Sing finals coed division are Alpha Chi Omega and Sigma Nu.

Chi Omega and Beta Theta Pi, Delta Delta Delta and Theta Chi, Delta Gamma and Delta Upsilon, Gamma Phi Beta and Farmhouse, and Kappa Delta and Delta Chi.

First, second and third place trophies will be given in both the sorority and coed competition and only a first place trophy will be given in the fraternity division since only one house is participating in the finals for the fraternity division.

Phi Mu Alpha, a national music fraternity, will provide the orchestration for the finals. Chuck Mostov, Toledo, Ohio, sophomore, will be the master of ceremonies.

Chairmen for Greek Sing are Nancy L. Glaser, Bridgeville, Pa., sophomore and Dale E. Nye, St. Joseph junior.

Last year's winners of Greek Sing were Pi Beta Phi in the sorority division, Delta Tau Del-

ta in the fraternity division and Zeta Tau Alpha and Farmhouse in the coed division.

Greek Sing began in the 1940's when Panhellenic Council sponsored its Sorority Sing, which

became part of Greek Week in 1950. The fraternity division was added to the sing in 1957 and the coed division was added in 1965. Costuming and staging became part of Greek Sing in 1967.

Greek men compete for athletic honors

By DONNA WILBURN
State News Staff Writer

Fraternities vie for various honors, and they will match skills again during the inter-fraternity track meet.

Competition will focus on two contests. Preliminary eliminations will begin at 5:30 p.m. Tuesday at the MSU track; final decisions will be made at 7 p.m. Thursday at the East Lansing High School track.

Both field and running events are a part of the agenda. In the field category the 12-pound shotput, the long jump and the high jump are the designated areas of competition.

Running events will include the 100-yard dash, 880-yard run, 60-yard low hurdle, 220-yard dash, one-mile run, 440-yard run and the 880-yard relay. (For the information of the non-athletic female, a dash is defined as a full-speed sprint, whereas a run is a longer distance which requires paced strides.)

Judges for the Greek track meet will consist of the members of the MSU track team and the officials of the University's I.M. program.

Medals will be awarded to the individual winners and runners-up in each event. The fraternity that receives the largest number of total points will be presented with the track championship trophy.

Annually sponsored by the I.M. office of the University, the track meet is the only sports event scheduled during the hectic Greek Week activities.

ΜΑΡΣΗΑΛΛ

HAS SOMETHING FOR
EVERYONE!

- *We handle all Greek Material (it's all Greek to Us).
- *We have the nicest Personnel (on their day off)
- *We have the lowest consistent record prices (Really?)



From left-handed guitar
picks to portable TV

MARSHALL IS WHERE IT'S AT!!

MARSHALL MUSIC CO.

(Where is that?)
245 ANN ST. E. LANSING



A Special
Friend
coming up for
Term Party?

Get her a room
at



Phone 351-5500 for Reservations

1100 Trowbridge Road,
Off 127 at Trowbridge Exit

At the Campus, Michigan State University



GRECIAN CVRLS

Memories are made of you, with a crown of romantic long curls, like a goddess from Olympus.

Grecian curls in 100% human hair. Selected to match your hair exactly, fitted and styled to look naturally beautiful.

Wiglets	from \$7.00
Cascades	\$12.95
Falls	from \$25.95

MR. Martins
HAIR FASHIONS



Open Every Evening

952 Trowbridge
IN Spartan Shopping Center
East Lansing 332-4522

914 Southland St.
In Southland Commerce Center
Lansing 882-2700



Greek culture - 1969 style

The third annual Alpha Epsilon Phi sorority art show will offer Greeks the chance to display their art work Wednesday on Grand River Ave.

State News photo by Michael Marhanka

Art show yields outlet for creative individuals

By BARBARA PARNES
State News Staff Writer

Kresge Art Center will have competition Wednesday when Alpha Epsilon Phi sorority sponsors its third annual Greek Week art show.

The exhibit, to be held on Grand River Avenue between Charles and Division streets from 2-5 p.m., will offer the art work of fraternity and sorority members.

The entries will be grouped and judged in four categories: oil, water color, pen-and-ink and miscellaneous including sculptures and photographs.

Judging by three members of the Art Dept. will take place Tuesday night at the AEPH house, 402 Linden St. A trophy will be awarded to the Greek unit contributing the grand prize-winning piece of art work. Ribbons will be awarded to the

three top placing pieces in each of the four categories.

"The sisters of AEPH are looking forward to a very successful art show this year. We hope to receive many contributions from all the Greek units," Nancy Morrison, East Lansing junior and chairman of the show, said.

Miss Morrison noted that the previous two art exhibits were so successful that they have come to be considered an integral part of the Greek Week festivities.

The idea for an art show was originally conceived by AEPH's Elaine Ryan Passman, who has since been graduated from MSU. She served as chairman of the show for the first two years.

The art show is intended to give creative and artistic individuals the chance to display their works publicly.

Fraternity men don ugly duds, vie for 'most monstrous' title

By BECKY NIETERT
State News Staff Writer

Monsters will plague the campus this week.

The monsters, actually fraternity men in costume, are participating in this year's Ugliest Greek Contest, sponsored by Delta Upsilon fraternity.

The contest is an annual event for Greek Week. Each Greek unit has a chance to recruit a candidate for the contest.

Each candidate dresses up in the ugliest outfit he or his sponsoring house, can think up and is photographed in all his "beauty." His picture is then placed on a box which will be displayed in the Union concourse.

All students can help determine the winner of this coveted awarded by voting in the Union during the week of May 5.

Voting is done by placing a penny, or any number of pennies, in the box of one's favorite ugliest of the uglies. The winner will be whoever collects the most money in his box during the week.

All the money collected will go to the Campus Community Commission, which is part of the MSU Volunteer Bureau and deals with recreation, said Peter Chatfield, Battle Creek sophomore and chairman of the Ugliest Greek Contest.

Approximately 15 candidates are participating in this year's contest. The winner will be announced May 10 at the Greek Feast. The house that sponsors the ugliest Greek will receive a trophy.

HAVE A HAPPY GREEK WEEK

SUNSHINE CENTER

Ask about our drop-off service!

3 Great Locations For Your Convenience.

1 - 213 Ann Street
2 - Corner of Harrison & Wilson Road
3 - Northwind Dr. Facing Yankee Stadium Plaza

COIN OPERATED
WASH 'N DRY CLEAN
PHILCO 13 models

PHILCO 13 models
Sunshine Center
PHILCO 13 models

COIN OPERATED
WASH 'N DRY CLEAN
PHILCO 13 models

Join Those Who Expect More And Save

Precision Imports

"Specializing in finer sport cars"

Now offering quality service at reasonable rates by factory trained mechanics.

We have ample parts to aid you in faster service and financing available at request.

Lansing's sole distributor of Pirelli.

Bruce Jim

"electrical work a specialty"

PIRELLI

1915 E. Michigan
IV 4-4411

Outstanding seniors to receive awards

By DONNA WILBURN
State News Staff Writer

Even among mortal Greeks, Zeuses and Heras reign.

Each year the Outstanding Greek awards are presented to seniors who have made exceptional contributions to their fraternal organizations as well as to the University.

In previous years, two prospective graduates were recipients of this recognition—one representing the sororities, the other the fraternities. However, this year yielded an over-abundance of deserving senior applicants, and thus four students were chosen.

Outstanding Greek plaques, to be presented during the Greek Feast festivities May 10, will be awarded to seniors Judy Campbell, Scottsdale, Ariz.; Scott Cristman, Ilion, N.Y.; Judy Moore, Kalamazoo; and J. Pierce Myers, Moline, Ill.

Scott Cristman, Farm House fraternity, is both the past president and treasurer of his fraternity. He was also vice-president in Interfraternity Council and a member of the senior class council. Cristman is associated with Blue Key, scholastic honorary, and is on the Undergraduate Advisory Committee in the College of Agriculture and Natural Resources.

In 1967 he founded the Independent Purchasers Assn. This is a non-profit food buying organization which helps co-op houses and fraternities to procure food at reduced rates.

Greek life has been a rewarding experience, Christman said. "Being a Greek has helped me personally and has given me an opportunity to become involved."

"I feel that the Greek system has a future in this University which has not yet been fully developed . . . for no burden is heavier than a great potential."

Judy Moore, Zeta Tau Alpha sorority, was the secretary of Pan-hel Council as well as general co-chairman of this organization's leadership conference.

She served as chairman of the Greek Talent Show and was rush chairman of her house.

Miss Moore is doing student teaching this term.

Judy Campbell, Kappa Kappa Gamma Sorority, has served as both the second vice president and president of Pan-hel Council. In addition, she was on the 1967 Homecoming Court and the 1968 Theta Chi Dream Girl Court.

Miss Campbell was rush chairman for her sorority and was selected the Outstanding Chapter Member of the province for 1969. The province includes the states of Michigan and Indiana.

"Looking back, the Greek system is a vital part of the University for those who like to belong to a smaller, stabilizing group on such a large campus," Miss Campbell said.

James Pierce Myers, Delta Tau Delta, was president of his fraternity as well as Interfraternity Council. He was affiliated with Blue Key, Excalibre and Omicron Delta Kappa, organizations for scholastic and leadership achievements, and he also served on the National Advisory Board for Delta Tau Delta.

He too found rewards in Greek life.

"Greeks play a beneficial role on campus, and I hope they continue to exist. Fraternity living has been worthwhile for me," Myers said.

Both Miss Campbell and Myers participated in Spartan Round Table this year. This is an organization which brings together executives of dormitories and campus groups with administrators to discuss current campus problems.



Oh those Greeks!

Although Scott Cristman, Judy Campbell and J. Pierce Myers are three of this year's four outstanding Greeks, they took time off from their many activities to frolic on a slide. The fourth winner, Judy Moore, is away student teaching this term.

State News photo by Mike Beasley

University dons Egyptian aura to build human pyramids

The men of MSU will be building pyramids in a contest sponsored by Alpha Delta Pi.

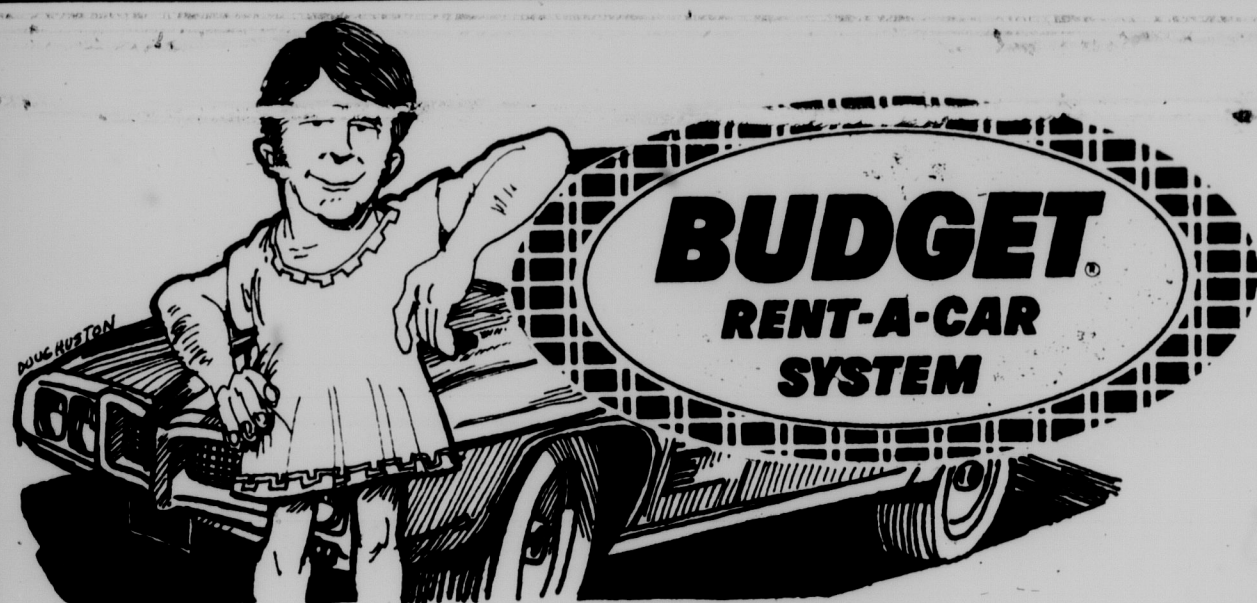
The men, all participating in Greek Week's newest event, will be showing off their building skill by piling on top of each other Saturday from 3 to 4 p.m. in Wells Hall court.

Two awards will be given to the participants. One award will go to the group that has the largest number of men in their pyramid. The other award will go to the most difficult pyramid. Judges for the event will include Miss MSU, the newly elected Mr. MSU and members of the administration. Trophies will be awarded to the two winning groups.

The Pyramid Building Contest is open to fraternities, men's residence halls or any group of three or more men who would like to participate.

It is hoped that the Pyramid Building Contest will become part of the traditions of Greek Week and that it will help to show that Greeks have fun in working together, said Leslie A. Frederick, Brooklyn junior, and Carol A. Larson, Bloomfield Hills junior, who are in charge of the contest.

The idea of the pyramid contest sprang from a similar contest sponsored every year by the Alpha Delta Pi chapter at Arizona State University.



Special Weekend Rate

for MSU students and faculty only

NO MILEAGE CHARGE

\$35.00 plus gas

Noon Friday-Noon Monday

1969 Pontiacs, Fully Equipped

You must be 21 and have a valid MSU I.D.

214 So. Capitol

372-8660

If You're Looking For Something To Do -



Bring The Gang To The Gables!
Your Place For Your Fun

Coral Gables

Greeks renovate, build living units

By CYNTHIA NEAL
State News Staff Writer

Imagine a young man going to pick up his blind date who, he has been told, is a sorority girl.

Imagine his state of shock when opens the front door and finds only men in the "sorority" house.

Imagine what is going through his mind as he races home, swearing that he will never again take a blind date.

Impossible? Not really if his blind date was a Chi Omega.

The women of Chi Omega moved at the the beginning of winter term into their newly constructed house at 229 Burcham Drive. The vacancy which they left at 239 Oakhill Ave. was filled immediately by the men of Phi Gamma Delta, who moved from 334 Michigan Ave.

Phi Kappa Theta fraternity colonized at MSU during fall term, 1967. For the first year that this fraternity was on campus, it did not have a house.

However, at the beginning of fall term, 1968, the men of Phi Kappa Theta moved into a house at 215 Evergreen Ave.

In the spring of 1966 the old Sigma Alpha Mu house on Grand River Avenue across from Bookfield Plaza was destroyed by fire. Between that spring and fall of 1968, the men lived in apartments and residence halls.

In September the men of Sigma Alpha Mu made their temporary home at 334 Evergreen Ave.

Bids have been submitted to their advisers and architects for a new house to be constructed on the property where the original house stood.

Completion is tentatively scheduled for winter term, 1970. This new living unit will accommodate over 30 men.

A new wing is being added to the Kappa Delta sorority house. Construction started at the end of February and should be completed by next fall.

The addition will provide a new living room, extended dining room area and study and date rooms. The new wing also includes eight bedrooms which will accommodate 16 more women, increasing the house's capacity to 51.



A new face in the crowd

Looking down on MAC Ave. with its many sorority houses is the new Chi Omega sorority house that sits on top of a tunnel leading to the rear parking lot.

State News photo by Bill Porteous



COMPLETE NEW & REBUILT PARTS

KRAMER

AUTO PARTS

"Everything for your car"

800 E. KALAMAZOO

Phone 484-1303

ARE YOU READY FOR GREEK WEEK?



GET READY AT ...

CAMPUS BOOK STORES

131 E. GRAND RIVER
ACROSS FROM THE UNION

507 E. GRAND RIVER
ACROSS FROM BERKEY HALL

'CONSUMER PROTECTION'

Nader to speak for Great Issues

By BARBARA PARNES
State News Staff Writer
Crusader Rabbit has a new friend -- and his name isn't Rags the Tiger.

Our cartoon character's new pal is named Ralph Nader, the

man who came to national prominence in 1966 as the leading crusader for increased auto safety.

Nader, 35, the author of the best selling book "Unsafe at Any Speed", which attacked the

auto industry, will be on campus Monday at 7:30 p.m. in the Auditorium.

The topic of the Nader speech, co-sponsored by ASMSU Great Issues and Greek Week, will be "Consumer Protection."

Nader, who received his bachelor's degree in government and economics in 1955 from Princeton University, became an activist during his college years. He participated in protests against university decisions and tried to arouse students to take advantage of their legal rights in the face of "arbitrary university power."

Immediately following his graduation from Harvard Law School, Nader worked successfully as a research assistant at Harvard and in private practice in Connecticut.

His interest in auto safety dates back to his days at Harvard when he wrote an article for the Harvard Law Review criticizing American autos.

Between 1959 and 1964, he campaigned on the state and local levels for effective legislation on auto safety standards.

Nader's 1965 book, "Unsafe at Any Speed" brought results on the federal level when former President Johnson called for auto safety legislation in his 1966 "State of the Union" address. That year, Nader testified several times before congressional sub-committees investigating this legislation.

During the course of these investigations by Congress, Nader charged that he was being harassed by a detective allegedly hired by General Motors. The detective has since submitted a statement admitting that his instructions were, "get something, somewhere on this guy... shut him up."

News of this harassment of Nader helped the progress of the legislation which was eventually passed in August, 1966.

Since the passage of the legislation Nader has acted as "over-seer" of the National Traffic Safety Agency.



BOWLING

Sport of the Greeks

Great For A Date

IT'S TWICE THE FUN
WHEN THERE'S MORE
THAN ONE.

Billiards-Refreshments
Good Food

*Holiday
Lanes*

40 Brunswick Lanes
For Your Bowling Pleasure

400 North Of Freedom 487-3731

Coeds+enthusiasm+mini-bikes caren in Sammy Trike Race

By DONNA WILBURN
State News Staff Writer

Take one group of energetic women, add an adequate number of super-stock tricycles, stir in large amounts of reverberating enthusiasm, sprinkle with laughter and you have the ingredients for the 1969 Sammy Tricycle Race.

This annual contest, sponsored by Sigma Alpha Mu fraternity, is slated for 12:30 p.m. Saturday at Parking Lot P (across from Anthony Hall).

The race will be organized in relay fashion, with four coeds representing each sorority. Winning teams of each heat will be eligible to compete in the final elimination to determine a grand champion.

A list of rules was compiled to give equal opportunity to all participants. The front wheel rim of the tricycle cannot exceed 14" in diameter and the distance from the neck of the handlebars to the base cannot be greater than 10".

These precautions insure that sororities do not construct "high-performance" tricycles-but instead keep to the standard model. Winning power must come from the individual, not the machine.

Some rules have also been established for the drivers. Participants must get off and on between designated areas during changes in the relay teams. In addition, the driver must be seated when crossing the finish line or she will be disqualified.

Arny Granat, Glencoe, Ill., junior will act as master of ceremonies. A band is scheduled to entertain between races.

Fashioned For Fun

THE
LONG
WEEKEND

We're inclined to think that the subtle approach to a fashionable weekend is the most dashing way to deal with your admirers... to focus attention on the real woman in you. And so, we present suits and costumes... Handbags and hosiery and all manners of the soft feminine look you'll want to own, to wear... to enjoy.

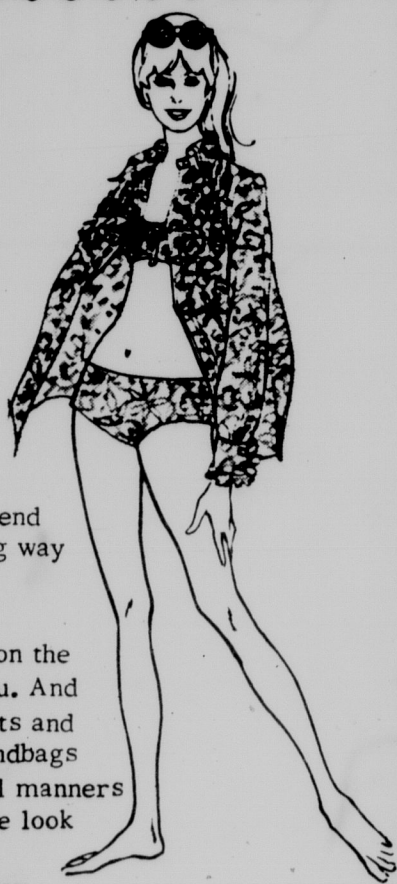
Happy Greek Week From

Gittleman's
WOMEN'S SPORTSWEAR

in frandor shopping center

hours:
mon., thurs., fri. 9:30 - 9:00 p.m.
tues., wed., sat., 9:30 - 5:30 p.m.

Many sizes and
styles for your
every need.



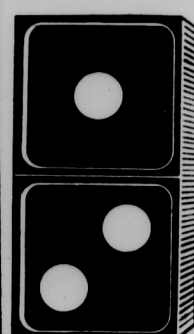
For Greek Week
Have An
Italian Pizza
From

**DOMINO'S
PIZZA**

Call:

351-8870 or 351-7100

Fast Free Delivery



Pizza
Perfection



TRADITIONAL FEAST

Chicken, cokes form Greek diet

By BECKY NIETERT
State News Staff Writer

Chicken and coke will be substituted for wine and grapes when the MSU Greeks hold their traditional Greek feast from 3 to 6 p.m. May 10.

The Greek Feast for all MSU Greeks will be held at the East Lansing City Park, located at Alton and Saginaw roads.

Greeks will dine this year on chicken, potato salad, cole slaw, ice cream and coke.

The feast will feature a local band, the Next Exit, to provide the dance music. This is an attempt to make the feast seem more like a TG or grasser and help the Greeks intermingle much more than they have in the past.

Also, for the first time fraternities will be providing rides for sorority women without dates who would like to attend the feast, stressing that this is not an affair strictly for dates. Rides will be arranged between the same sorority-fraternity pairs that worked together earlier for Kiddie Day. It is hoped that this will help bring a greater turnout than the feast has had in the past and make it more of an all Greek effort.

The WJIM Mobile Sound Studio will also be at the feast to play records during the band's intermissions.

Candidates for the Ugliest Greek Contest will be in costume. The winner of the contest will be announced at the feast.

Other highlights of the feast include the announcement of the winners of the Sigma Alpha Mu tricycle race and the outstanding Greeks.

In addition, the house which has shown the most enthusiasm by its participation in Greek Week events will be presented with the participation award.

Open houses

The recent passage of the open house policy for fraternity houses further increased the opportunity for fraternity men to mingle with members of the opposite sex.

The IFC proposal authorizes each fraternity to formulate an open house policy to be submitted to Edwin Reuling, IFC adviser, and the student activities division of student services.

Greeks to chug-a-lug for free TG at Gables

By ROSA MORALES
State News Staff Writer

Sororities and fraternities have a chance to win a free TG at the Coral Gables by taking part in a chugging contest Wednesday at the Gables.

The chugging contest, part of the TG entitled "A Greek Happening at the Gables" sponsored by Greek Week and the Coral Gables, will be open to representatives of sororities and fraternities. Marti Roach, Dearborn junior and special events co-chairman, said.

In order to be admitted to the TG Greeks will have to wear their pins or have a card telling what unit they belong to, Miss Roach said.

The TG will offer two separate chugging contests, one for the sororities and one for the fraternities. The two victorious Greek units will have a free closed TG with free beer on a Friday in the near future.

"Although the free TG will be for the winning Greeks, dates are allowed to come, but the

free beer will be given only to the winners," Miss Roach said.

The Society for the Advancement of Extra Curricular Activities (SAECA) is also helping the Coral Gables organize Wednesday's TG which starts at 8 p.m.

SAECA, sub-titled Board of Directors of Coral Gables, is a Greek-oriented organization started in 1953 as a liaison group between the student body and the management of the Coral Gables to advise the management what the students want in the form of entertainment.

The SAECA board consists of 16 Greeks and one independent.

The Ugliest Greek candidates will also be presented to the Greeks at the TG, Miss Roach said.

Miss Roach said that all Greeks are encouraged to enter the Coral Gables through the front door and sit on the right side in SAECA's Corner where all Greek units will be gathered.

Graduation

PORTTRAITS

Interesting ... Beautiful
Photographic Studies

Many Styles and Sizes to Select From

Van Dyke Studio

209 Abbott Rd.

ED 2-8889

See Us For



*See Us For
Your Fraternity
And Sorority
Jewelry
And Gifts*

319 E. GRAND RIVER

Headquarters for:

- ★ Orange Blossom Diamond Rings
- ★ Art Carved Wedding Ring Sets
- ★ Longines, Bulova Watches
- ★ International Pewter and Silver

See Us For
Jewelry and
Art Center

Grand Opening

Of Our New Salon--Designed To
Better Serve Your Beauty Needs.

*Parson's
Imperial Beauty Salon*

Our Stylists Are Up To Date With
The Newest Styling Techniques, In-
cluding Grecian Curls. We have a
Fine Tradition of Excellent Service.

1824 E. Michigan

484-9342

**PARENTS'
WEEKEND
IS COMING
MAY 16-17**

STATE NEWS

WELCOMES THEM WITH A
SPECIAL EDITION

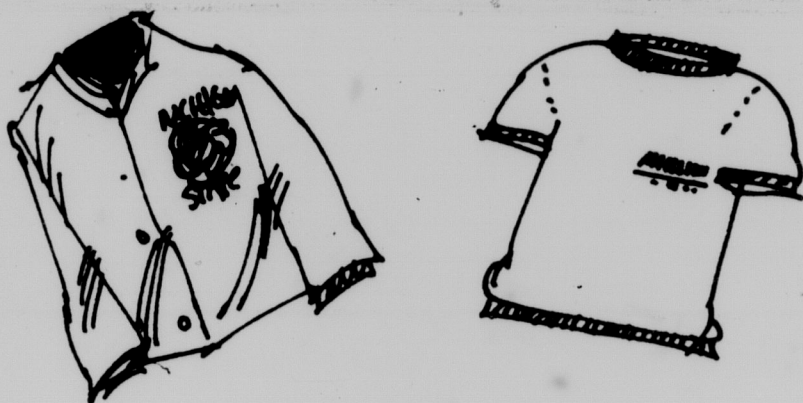
MAY 16

Advertising Space Deadline 3 p.m., May 7

things for greeks...



The official MSU class ring,
with your greek letters
Embossed in gold on the
stone. With the Purchase of
a ring for any class--'69, '70
'71 or '72, we will give you a
miniature ring charm for your
pinmate!



MSU Sportswear

T-shirts, Jackets, Sweatshirts,
Talk to us about getting
your greek letters embossed
on the jacket of your choice

PLUS much more

- * Greek Lettered Decals
- * Paddles
- * Greek Letters - paste-on
- * Mugs, Mugs, Mugs
- * Greek Lettered Ashtrays
- * Greek Car Decals - metal!

The ONLY Official MSU Book Store

Bookstore Hours:
Monday - Friday
8:30 to 5:30

MSU

BOOK STORE

In the center for International Program