

Manchester Enterprise

By MAT D. BLOSSER.

THURSDAY NOV. 6, 1890.

THE EDITORS' CUTING.

From Saginaw to the "See," to Iron Mountain, St. Paul, Minneapolis, the Yellowstone Park, Montana and her Capital, Butte, the great mining camp, the "Gem of the Mountains," from Hampton to Ogden.

SALT LAKE CITY.

FIFTEENTH LETTER.

Standing in front of the Eagle Gate, of which we spoke last week, one's thoughts run back to the early history of these people and the city, and our blood fairly boils in our veins as we reflect on the cruel treatment of the hardy pioneers and California emigrants met at the hands of those Mormons. Who can think of the terrible fate of those poor brave men, those heroic women and innocent children who were foully murdered at the "mountain meadow" without feeling that a just God should punish the leaders and participants in that awful massacre.

Brigham Young may not have been responsible for that slaughter and others but we can but feel that the granite slab which covers his grave is none too heavy. The grave is surrounded by an iron railing and the lot by a fence of like material.

One of the handsomest views of the city and valley is obtained from camp Douglas, the U. S. military post, which lies on an elevated plot of ground at the foot of the Wahsatch range about three miles from the city. The camp was located by Capt. Connor in defiance of the Mormon leaders. The camp is beautifully laid out in the midst of lawns and orchards and the barracks and officers' houses are built of stone.

Down through the canyon near the camp flows the stream which supplies the city with clear pure water, at least it is clear when it starts, but after flowing through the little ditches which line either side of the streets of the city until it reaches the lowest level, it becomes considerably discolored, yet they use it for irrigating, culinary and other purposes and even drink it.

In riding about the city in carriages or the electric street cars, one sees some elegant residences, notably those of the Walker brothers, gentlemen, who have become millionaires in mercantile pursuits there.

It must be remembered that for many years Salt Lake City was the only place of importance between the Missouri river and the Pacific, and there is yet an immense and wealthy country which seeks a market there for its products. And the city is bound to grow, and rapidly too, until it becomes one of the wealthiest and largest places in the great west.

The Zions' co-operative mercantile institution, a store which does \$6,000,000 worth of business a year, and Zions' savings bank and printing establishment, occupy buildings of great proportions and elegant architectural design. Every modern improvement is employed to conduct the vast and increasing business and it would be difficult to mention an article not found upon the shelves or in the store-houses of the former institution.

The old Mormon theater is really the only place of first-class amusement in the city, now that the Walker opera house has burned down. The old theater will seat comfortably 1,500 people, and some of the best companies play there. In an early day the Mormons had to depend mostly upon "home talent" and it is said that some really fine artists have been reared and educated there.

There are some very fair hotels in the city, the Walker house being among the oldest and best.

Salt Lake City is not a compactly built city, it has nearly 100 miles of streets. The Mormons who first settled there secured enough land for garden, orchard, etc., besides a suitable site for their dwellings and they are not at all crowded yet. The dwellings are mostly built after the styles brought from the east 40 years ago. They are roomy, wide gabled houses with great pillared porches flanking the two stories. Many are constructed of adobe frequently overlaid with stucco. Each is embowered in trees both fruit and ornamental, others have princely laid flower beds filled with old time posies, while others have lawns as beautiful and well kept as any you can find in the east. The city has been literally an agricultural city, but it is now a commercial city as well. In times past the Mormons had but little money, business was carried on by barter. The products of the fields were carried to the tithing offices where a tenth was deducted for the church and an order for the balance given on the co-operative store. Groceries, clothing, furniture, etc., for the entire year were thus supplied to the people and what was left they had for money.

A visitor to Salt Lake City will be struck by the number of old people he meets. They are seen everywhere but they seem to be more vigorous than the old people of the east. Perhaps, indeed it is claimed, that the climate is so invigorating that they are not crippled by rheumatism and other diseases common to the aged, and it is not an uncommon sight to see a score of people who have passed the three score and ten age. Once a year they celebrate "old folks' day" and at a recent celebration in June, 750 persons over 70 years of age went to Ogden to have an "outing." How is that for a city of 25,000 people?

There are many excellent attractions for the citizens and tourists, among which are the hot springs, only a few miles from the city, and Garfield Beach, the greatest bathing place at Great Salt Lake, of which we will speak next week.

Montana, Oregon and Washington.

The Northern Pacific Railroad passing through Minnesota, Dakota, Montana, Idaho, Oregon and Washington was the first line to bring the region occupied by these states into communication with the east. Its main line and branches penetrate all sections of these states, reaching nine-tenths of the chief cities. It is the shortest line to Helena and Butte, Mont.; Spokane Falls, Tacoma and Seattle, Wash., and Portland, Ore., and the only line running through train service from the east through the states of Montana and Washington. Pullman Sleepers and furnished Tourist Sleeping Cars are run via the Wisconsin Central and Northern Pacific, and Pullman Palace Sleeping Cars via Chicago, Milwaukee & St. Paul and Northern Pacific, from Chicago through to the Pacific Coast without change. This is the Dining Car and Yellowstone Park route.

The large travel on the Northern Pacific line necessitated the inauguration in June 1890, of a second through train to the Pacific coast, thus enabling this road to offer to the public the advantage of two through trains daily to Montana and points in the Pacific North-west, carrying complete service of sleeping cars, dining cars and regular day coaches. The train leaving St. Paul in the morning runs via the recently completed Air Line of the Northern Pacific through Butte, Mont., making this the shortest line to the latter point by 120 miles.

Colonists for Washington, Oregon and British Columbia points should take no other line than the Northern Pacific, as by its line only, can all portions of the state of Washington be seen. Stop-overs are allowed on second class tickets at Spokane Falls and all points west, enabling settlers to inspect the country without extra expense.

For Maps, Time Tables and Illustrated Pamphlets, or any special information desired, address your nearest ticket agent, or CHAS. S. FEE, Gen'l Pass. and Ticket Agent, St. Paul, Minn.

Home-seekers' Excursions.

Will leave Chicago and Milwaukee via the Chicago, Milwaukee & St. Paul Railway, for points in Northern Iowa, Minnesota, North Dakota, South Dakota, (including the great Sioux Reservation) Montana, Colorado, Kansas and Nebraska, on September 9th and 23rd, and October 14th, 1890.

Rates for these Excursions will be about one fair for the round trip, and tickets will be good for return within 30 days from date of sale.

For further information apply to any Coupon Ticket Agent in the United States or Canada, to A. V. H. Carpenter, General Passenger Agent, Chicago, Ill., or to Harry Mercer, Mich. Pass. Agt., C. M. & St. P. R'y., 90 Griswold St., Detroit, Mich.

Croft's Overland Guide to the West. Croft's Overland Guide, just issued, graphically describes every point on the Union Pacific. "The Overland Route," between the Missouri River and the Pacific Coast. Persons should not start West without a copy of this guide in their possession.

It furnishes in one volume a complete guide to the country traversed by the Union Pacific System and cannot fail to be the greatest assistance to the traveler.

It is for sale on trains on the Union Pacific, or by enclosing \$1.00 to the under signed, a copy will be mailed to any address in the United States. E. L. LOMAX, Gen. Pass. Agent U. P. R'y., Omaha, Neb.

A very pretty easel can be made of cat-tails. Says a lady to the ENTERPRISE: Select nice straight ones. You will need ten. Some of them are very tall. Cut off a part of the stalk leaving the longest one about five feet in length. After measuring the picture that you wish to use on it, stand two of the cat-tails on the floor with the heads up; then at a given distance from them place two more in the same position. Next take two a little shorter than the above mentioned ones, put them in a horizontal position and fasten firmly to the cat-tails forming the sides of the easel. Twine can be used first to tie the cat-tails sewing them with needle and thread afterward. We now have a rest for the lower part of the picture. For the upper part take two cat-tails and proceed as before. The flower of each should be on the outside of the easel. To make the whole firmer place two cat-tails at the back of the easel perpendicularly. They shouldn't be perpendicular but slanting, the effect is better. Fasten them to those cat-tails on which the picture rests. Finish with bows of scarlet ribbon wherever stitches have been taken to secure the different parts of the easel. Dainty cards may be inserted between the leaves of the plant. Placed in the corner of the room such an easel gives a touch of color and is really a great addition to the furniture.

Lenawee County.

An orchestra has been organized in Tecumseh of nine pieces, comprising some of the best local performers, as follows: Miss Jennie Root, pianist; Geo. Knapp, violin; W. S. Dickinson, first cornet; Miss Edith Ingersoll, second cornet; Robt. Hosmer, flute; Levi Hayden, piccolo; Will Ingersoll, clarinet; H. B. Root, violoncello; W. L. Heck, trombone.

The Lenawee county supervisors have scored a large point in the treatment of tramps, which is an important step in advance. They have passed a law that all tramps, upon conviction, shall be required by the sheriff to perform manual labor eight hours a day breaking stone. A committee was appointed to procure a suitable yard and stone for them to work upon.

The prison report for October is as follows: In prison Oct. 1, 715; received during the month, 20; discharged, 16; died, 1; transferred to Ionia, 4; leaving in prison Nov. 1, 714.

RAINBOW LAND.

From the valley of snow, where tear drops hung,
The glittering bow of promise sprung.
So near it was to the distant light
So distant no hand could reach it quite;
And over the hills and far away
It stretched where the bright untrodden lay:
But Fancy, true of eye than Truth,
Could see Rainbow Land from the plains of youth.
There was gold and glory in that fair land,
There were shining laurels and honors grand,
There was love undying, and friendship true,
Over the mountains bright and blue.

But rough and hard was the upward climb
On the treacherous slopes of the hill of time.
The laurels we saw from the heights below,
We missed ere we reached the line of snow,
And the gold for which we greedily sought,
If we found at all, it was dearly bought.

Few are the eyes that are blest to find
The road to the land where all are blind,
Where the happiest only he who lives
Alone for the happiness he gives,
And the only hope is the watch whose aims
Go begging in vain for needy pains.
God set the bound by his own above—
For Rainbow Land is the land of love.

—James Jeffrey Booth in Boston Pilot.

DON'T FAIL TO CALL

and see outline of

CARDS!



We have beautiful fringe-lovely new pattern

also the London

Photograph Cards.

be richest and newest cards in the market.

of which we will sell at Reduced

Prices, at the

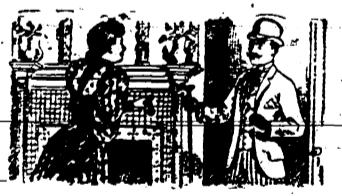
Enterprise Steam Printing Office.

STRIKE WHILE

The Iron Is Hot.

Having bought an unusually large stock of the finest Wall Papers ever brought to Manchester and which will soon be received, I will offer My Entire Assortment of Paper on hand at Lower Prices than were ever before heard of, to make room for the New Goods. Only until New Papers arrive can these papers be bought at these figures. 2-1-2 cents a roll up.

GEO. J. HAEUSSLER.



"Hello! Tom. Glad to see you, old fellow! It's almost ten years since we were married. Sit down, let's have an experience meeting. How's the wife?"
"Oh! she's so-so, same as usual, always wanting something I can't afford."
"Well, we all want something more than we're getting. Don't you?"
"Yes, but I guess 'want' will be my master. I started to keep down expenses, and now I'm 'mean,' and she's tired of saving and never saving anything to show for it. I saw your wife down street, and she looked as happy as a queen!"
"I think she is, and we are economical, too—have to be. My wife can make a little go further than anyone I ever knew, yet she's always pressing me with some dainty contrivance that costs me the comfort and beauty of our little home, and she's always 'merry as a lark.' When I ask how she manages it, she always says 'I'll tell you.' 'Oh! that's my secret.' But I think I've covered her secret. When we married, we both knew we should have to be very careful; but she made one condition: she would have her Magazine. And she was right! I wouldn't do without it myself for double the subscription price. We read it together, from the title-page to the last word; the stories keep our minds from getting bored; we get new ideas from the household department; she makes all her dresses and those for the children, and she gets all her patterns for nothing with the Magazine; and we saved Joe when he was so sick with the croup, by doing just as directed in the Sanitarium Department. Or send 10 cents direct to the publisher, and I'll tell you how to do it!"
"What wonderful Magazine is it?"
"Demorest's Family Magazine, and—"
"What? Why that? What I wanted so bad, and I told her it was an extravagance!"
"Well, my friend, that's where you made a grand mistake, and one you'd better rectify as soon as you can. I'll take your 'sub.' right here, on my wife's account; she's bound to have a change in time for our tin wedding next month. My gold watch was the premium I got for getting up a club. Here's a copy, with the new Premium List for clubs—the blazest thing out! If you don't see it in what you want, you'll want it, whether it's a tack hammer or a new carriage, and he will make special terms for you either for a cash or part cash. Better subscribe right off and surprise him in six months. Or send 10 cents direct to the publisher, W. J. Demorest, 15 East 44th Street, New York, for a specimen copy containing Demorest and the Enterprise for \$3.

FOR 30 DAYS

A SPECIAL

Watch Sale

AT PRICES THAT WILL
SELL THEM.

IF YOU

Want a Watch

DO NOT MISS BUYING AS

I WILL NOT CONTINUE

Selling

AT THESE PRICES LONGER

THAN

30 DAYS.

Amsden, THE Jeweler.

Manchester, Oct. Tenth

WALL PAPER.

WAR

DECLARED!

We have the largest stock and the
most complete assortment of

WALL PAPER!

In Manchester, consisting of over

10,000 Rolls. We will sacrifice the entire lot

STRICTLY FOR CASH

For the next 20 days, at prices per roll from 34c to the best embossed gold at 20c. We invite inspection and

DEFY COMPETITION AT

Fred Steinkohl's

Drug and Book Store.

F. G. SCHREFFER.

PROFESSIONAL

VETERINARY SURGEON.

Who graduated from the university at Gettysburg, Germany, and has had considerable practice in the German army, has

Located in Manchester Village.

He has had extensive practice in Washburn, Wayne, and Monroe counties and will be responsible for all his treatments.

Calls Promptly Attended

Office at the residence, corner Clinton and Boyne streets

Burdock BLOOD BITTERS.

Direct Proof.
My wife has been troubled with Liver Complaint and Indigestion of the Heart for over a year. Her case baffled the skill of our best physicians. After using three bottles of your Burdock Blood Bitters, she is almost entirely well. We truly recommend your medicine.
GEORGE W. SHAW, Montpelier, Vermont Co., O.

One Dozen Demorest's Tourist's Tags!

For attaching to Trunks, Baskets, Packages, &c. 10c.

With stout strings, ready to tie on sent by mail on receipt of six 2c stamps or sold at the

Enterprise Office.

IF YOU WANT

A Beautiful

Birthday Card!

Please or framed, call at the

ENTERPRISE OFFICE.

TABLETS

Of All Sizes

WRITING TABLETS

For Pen or Pencil, for Sale at the

ENTERPRISE OFFICE.

LARGE SHEETS

OF

BLOTTING PAPER!

White and Colored, for Sale at the

ENTERPRISE OFFICE.

JUST RECEIVED

Japanese Napkins!

ENTERPRISE OFFICE.

STATE OF MICHIGAN, COUNTY OF WASHTENAW. The undersigned having been appointed by the Probate Court for said county, Commissioner, to receive, examine and adjust all claims and demands of all persons against the estate of Samuel J. Perkins, late of said county, deceased, hereby gives notice that six months from date are allowed by order of said Probate Court, for creditors to present their claims against the estate of said deceased, and that they will meet at the office of Samuel J. Perkins, Esq., in the village of Manchester, in said county, on Tuesday, the 13th day of January, and on Monday the 15th day of April, next, at ten o'clock A. M. of each of said days, to receive, examine, and adjust said claims. Dated, Oct. 10, 1890. JAMES KELLY, Commissioner.

STATE OF MICHIGAN, COUNTY OF WASHTENAW. In the matter of the Estate of Charles Larriere, late of said county, deceased. Notice is hereby given that in pursuance of an order granted to the undersigned, Harvey Hall, Guardian of the estate of said minor, by the Hon. Judge of Probate for the county of Washtenaw, on the Seventh day of October, A. D. 1890, there will be sold at Public Vendue, to the highest bidder, at the dwelling house building on the premises hereafter described in the county of Washtenaw, in said state, on Monday, the first day of December, A. D. 1890, at 10 o'clock in the forenoon of that day, (subject to all encumbrances by mortgage or otherwise existing at the time of the said day appointed for said sale as aforesaid) the following described Real Estate, to-wit: The south west quarter of south west quarter, and south half of south west quarter of north west quarter, all of section number 33, all in township of Manchester, Washtenaw county, Mich. Also seven and three fourths (7 3/4) acres from all of the north part of north west quarter of section number four in town five south of range three east, township of Franklin Lenawee county, Michigan. HARVEY HALL, Guardian.

Real Estate for Sale. STATE OF MICHIGAN, COUNTY OF WASHTENAW. In the matter of the estate of William Scully, deceased. Notice is hereby given that in pursuance of an order granted to the undersigned administrator of the estate of said William Scully, by the Hon. Judge of Probate for the County of Washtenaw, on the 28th day of October, A. D. 1890, there will be sold at Public Vendue, to the highest bidder, at the dwelling house on the premises hereafter described in the township of Manchester, in the county of Washtenaw, in said state, on Saturday the 20th day of December, A. D. 1890, at one o'clock in the afternoon of that day (subject to all encumbrances by mortgage or otherwise existing at the time of the death of said William Scully) the following described Real Estate to-wit: Beginning at the south-west corner of Section No. 23, Town 4 South, Range 3 East, Michigan, running thence north along section line to the quarter post and about 40 chains, thence east along quarter section line 3 chains and 75 links; thence south parallel with the first line about 40 chains and to the Section line to a stake; thence west 3 chains and 75 links to the place of beginning, excepting therefrom the north 25 rods of the same, herebefore sold to John Engle. Also beginning at a point 15 rods east of the south-west corner of said section No. 23, running thence north parallel with west line of said section 62 rods, thence east five rods, thence south 10 rods, thence east 10 rods to place of beginning. Dated November 3rd 1890. JOHN KAGAN, Administrator of said Estate.

TEACHERS DID YOU KNOW

that we have a new

LINE OF SCHOOL CARDS,



Call and See Them

Or send for descriptive catalogue and price list from which you can make your selections. If you will send us the amount you wish to invest in cards and the number you want, we will send to you post-paid.

THE BEST

We have for that amount. Address,

MANCHESTER ENTERPRISE,

MANCHESTER, MICH.

Gieske & Dresselhouse.

NOW

Is the time to be

LOOKING AROUND

To find the best value for the money. The wearers of

CLOTHING

Are numerous and we are in shape to please all who are looking for a Winter Suit or Overcoat in Men's, Youth's, Boy's, or Children's sizes. The Winter Assortment is all in for anything in the Hat, Cap, Glove or Mitten line. It is unnecessary to look further as our stock is complete and of the

LATEST STYLES!

For Underwear all we can say is, If you want any, come and see us, We HAVE IT.

ROBISON & ROEBBE,

DAYLIGHT CLOTHING HOUSE.

WE NEVER HAD

Such a Fine Line of

BED ROOM SUITS!

And other Furniture as We have now, and We have something new for Manchester, in

Folding Beds, Side Boards, Fancy Writing Desks, and Book Cases

Combined; Fancy Antique Oak Rockers, High Back Antique Oak Dining Chairs, and a score of articles in as full assortment as any city store.

We now have a stock of

LATEST STYLES CARPETS!

At Low Prices. We are making a special cut in prices of Marble Top Goode Picture Framing and Ordered Work a specialty.

JENTER & RAUSCHENBERGER.

MANCHESTER.

JOHN KENSLER.

ATTENTION EVERYBODY!

CLARK BROTHERS.

Contractors and Builders

Are prepared to take contracts for building

of all kinds With our new

Steam Planing Mills

We are prepared to manufacture on

short notice

Sash, Mouldings, Etc.

—And do—

Turning, Planing,

Scroll Sawing, Etc.

—Do—

First-Class Style

Mills at Case's Lumber Yard, near Lake

Shore Depot.

Manchester, Mich.

IF YOU WILL NOT SELL YOUR CREAM,

SAVE MONEY BY

Making GOOD Butter!

At home with the

Buckeye Churn.

Don't pass me by if you want

HARDWARE!

Or Tin Work done.

Get a GALE Plow!

Take Your Wheat to

KINGSLEY'S ROLLER MILL

East-Manchester and have it exchanged for flour

J. H. KINGSLEY.

BRAIN labor is of such various kinds and degrees of utility or uselessness that it is misleading to lump them all in the same category. There are brain workers whose services are of immense value to mankind, such as skillful physicians, great engineers and real statesmen. To such men society owes a debt of gratitude for their labors. Then there are the mass of those whose administrative and organizing capacities are essential to the ordinary work of the world, whether as employers, or public servants, or salaried employees. The utility of all this class of labor, is likewise freely admitted. But what is too often lost sight of by those who bring the charge of ignoring brain labor against us is that a very large proportion of the brain work for which so much is claimed is either absolutely useless or positively injurious. Under this head we may include the labor of stock-brokers, real-estate speculators, gamblers, burglars and the like, without exception, as well as nine-tenths of the "work" of politicians, editors, lawyers, bankers and so-called public instructors. These men work hard in their way. They are not idlers, but society would be better off if they were

Causes of Wakefulness.

Continued wakefulness is a crying call to review one's habits and see what is wrong. Be sure the shoe pinches somewhere and soon its effects will be felt in the life-centres of the body. There is, perhaps, mental unrest, irritation or overwork, in which laziness is to be assiduously cultivated. We may depend upon it there is some

A Prescription.

Many persons are troubled with excessive perspiration about the face and arms. A remedy for this is almost needless or pastachio meal. This may be applied to the face dry or in the bath. It gives a peculiar velvety softness to the skin and is exceedingly agreeable. There are few things more unpleasant than an oily complexion, and any simple means to overcome it certainly deserves to be commended.

All Under Water.

Geologists assert that if the continents and the bottom of the ocean were graded down to uniform level the whole world would be covered with water a mile deep.

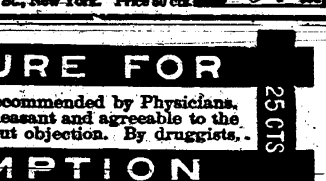
Neutralizing Mad-Dog Poison.
 Dr. Arapad Bokai, professor of
 University of Klausenburg, claims
 to have compounded a solution which
 completely neutralizes the poison
 injected into the system by the bite
 of a mad-dog. This solution consists
 of lime water, salt brine, sulphur
 permanganate of potassium, and
 iodine oil.

25CIS

PISO'S C

Best Cough Medicine. 1
Cures where all else fails.
taste. Children take it with

CONSUME



If your druggist does not keep it, forward 10c. in stamps, and we will send a full sized cake by mail postage paid.

CHESEBROUGH MANFG. COMPANY
24 STATE ST., NEW YORK.
W. N. U., D—VIII—45.

For \$1.00 We will mail the Journal from now to January 1st, 1926—that is, the balance of this year, **FREE**, and a **FULL YEAR** from January 1st, 1926 to January 1st, 1926. Also, our handsome 40-page **Premium Catalogue**, illustrating a thousand articles, and including "Art Needlework Instructions," by **Mrs. A. R. RAMSEY**; also " Kensington Art Designs " by **JANE S. CLARK**, of London.

It is this offer most particularly we mentioned when sending your subscription, or one year only will be given.

CURTIS PUBLISHING COMPANY, PHILADELPHIA, PA.