

THE MANCHESTER ENTERPRISE

Boldly Going Where No Newspaper Has Gone Before



131st Year -- No. 8

Manchester, Michigan

50c per copy

Optimist Student of the Month



Lisa DuRussel with her parents, Sue & Pat DuRussel, and Optimist Dave Little

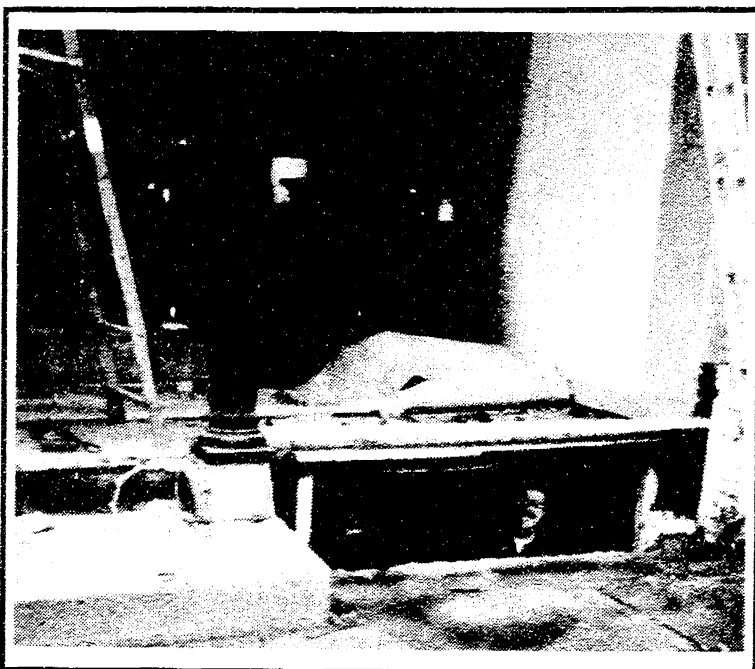
Lisa DuRussel, the daughter of Patrick and Susan DuRussel, has been selected as the December "Student of the Month" by the Manchester Optimist Club. Lisa has demonstrated leadership through involvement in school and community activities. She has participated in cheerleading throughout her high school career, and was named to the All-Conference cheerleading squad in the fall of 1997. Lisa is a member of the NHS has been listed on the A/B honor roll for all of her years at MHS. Also, she has been named a scholar athlete for seven sports seasons. She enjoys acting in school plays and stays active in the German Club. Lisa is Vice President of Key Club and

Secretary of N.H.S.

She attends St. Mary's church, contributing to many K of C activities. She is also a member of the Youth Group.

Lisa enjoys listening to music and spending time with her family and friends. After high school, Lisa plans to attend Michigan State or the University of Michigan, possibly majoring in Environmental Engineering.

Bringing A "New Face" to Downtown Manchester



Ron Milkey peeks out from the basement area underneath the old LV Kirk/Manchester Electric building, most recently Ricketts TV & Radio Repair. Ron is exposing the original black pillars in front and installing a recessed front door, to restore the building to an historic appearance, which will fit in better with the rest of the community. On Monday, Milkey and his crew removed the entire front face of the building. The renovation, which he hopes to complete by spring, will incorporate retail space in this building. More pictures, page 23

One-Night Rash of Break Ins Stumps Deputies

Last Wednesday night or Thursday morning, at least eleven vehicles were broken into on the east side of Manchester village. Sgt. Jerry Haensler of the Washtenaw County Sheriff's Department indicates that despite an extensive investigation, the WCSD has come up with surprisingly few leads.

Terming the break ins "A crime of opportunity," Haensler indicated that more cars had been ransacked than items stolen. However, from the variety of vehicles looted, there were taken cellular phones, a portable CD player, an 8" color TV, a VCR, car stereo, radar detector, laptop computer and a blanket. One victim did not immediately notice her missing cell phone and the theft was not reported until Saturday, but it is believed that all the larcenies occurred on the same night.

All the vehicles were parked on private property and all had been left unlocked.

One victim reported seeing a flashlight in the nearby woods sometime around 3 AM Thursday, but thought nothing of it at the time. Another victim noticed a coat on the ground outside his car, but the coat was found to belong in the family. No reports have been received of suspicious vehicles or persons in the area where the break-ins occurred, which included Wolverine, Granger, Parr and Spring Streets, south of City Road.

"The unusual thing is that according to his log, the midnight deputy had driven through these neighborhoods at least three times that night," reported Haensler, but the deputy reported seeing no suspicious activity on his shift. The calls began coming in around 6 AM on Thursday and continued for several hours.

All vehicles were searched for latent finger-

print impressions and other evidence, but none was found.

"We have conducted numerous interviews with possible suspects, but none of these leads have turned up any substantial evidence," said Haensler. Local suspects have not been ruled out; however, the WCSD has not overlooked the possibility that it was a random spree by a person or persons just passing through the neighborhood that night.

Until the crimes are solved, Sgt. Haensler recommends that all residents keep their homes and vehicles locked. "This was a crime of opportunity," commented Haensler. "None of these vehicles had been locked, and in each case, entry was made through the drivers' side door."

Anyone with leads which could help the WCSD in their investigation of these burglaries, is asked to call the Department at 971-9036, ext. 7159 or stop in at Station 4 above the Village Hall.

-Marsha Johnson Chartrand

Please deliver this copy of THE MANCHESTER ENTERPRISE to—

Manchester Township Library
P.O. Box 240
Manchester, MI 48158

Inside This Issue

Community Calendar.....	page 2
Electrical Suppliers to Change.....	page 3
Op/Ed Page.....	page 4
Local Government.....	page 5
Sharon Township Ordinance.....	page 6, 7, 8
Police - on & off the Beat.....	page 8
Church Page.....	page 10
Money Management.....	page 11
Teddy Bears' Picnic.....	page 12-13
Senior Citizens.....	page 15
People.....	page 16
School.....	page 17
Sports.....	page 18
Around Town.....	page 19
Organizations.....	page 20
Announcements.....	page 21
Classified.....	page 22

Community Calendar

Scheduled Meetings

Bridgewater Township
Carol Peacock, Supervisor
517/456-7303
Karen Weidmayer, Clerk
13360 E. Austin
428-8641
Planning Commission
2d Monday 7:30
Township Board Meeting
3d Wednesday, 7:30

Freedom Township
Town Hall 428-7545
11508 Pleasant Lake Rd.
Robert Little, Supervisor
428-8585
Julie Schaible, Clerk
13785 Pleasant Lake Rd.
428-7241
Township Meeting
2d Tuesday 8:00 PM
Planning Commission
7:30 First Tuesday

Manchester Township
Town Hall 428-7090
275 S. Macomb St.
Ron Mann Supervisor
Kathleen Hakes, Clerk
Township meeting
2d Monday 8:00
Planning Commission
4th Tuesday

FIRE DEPARTMENT
428-9439 non-emergency

Sharon Township
Supervisor Gary Blades
5340 Hazel Rd., Grass Lake
428-9518
Teri Aiuto, Clerk
428-7002, 17250 Bethel
Church Road
Township Meeting
1st Thursday 8:00
Planning Commission
3d Thursday

Manchester Board of Education
Wayne Winzenz, President
Meetings
3d Monday 7:30
MHS Media Center
Superintendent - Ron
Niedzwiecki 428-9711

Village of Manchester
Larry Bechtel, President
Jeff Wallace, Manager
428-7877
Village Council Meeting
1st & 3rd Monday, 7:00
Planning Commission
2d Tuesday after the first
Monday, 7:30 PM

COMMUNITY EVENTS

Monday

1st Monday Manchester Township Library Board meets 7:30 PM
1st Monday: Manchester Masonic Lodge, business meeting 7:30 PM
1st & 3d Monday: Manchester Village Council, 7:00
2d Monday: Bridgewater Township Planning Commission meets 7:30
2d Monday: Manchester Knights of Columbus meets 8:00 PM. Grand Knight Ed Barnard
2d Monday: Manchester Township Board meets 8:00
2d & 4th Mondays: Manchester Optimist Club
3d Monday: School Board meets MHS Media Center 7:30
3d Monday: United Way Board meetings, 7:30 at First of America Bank
Every Monday: Overeaters Anonymous 7:30 - 8:30 PM At Chelsea United Methodist Church, Contact 475-4264

Tuesday

2d Tuesday: Freedom Township Board 8:00
2nd Tuesday: Manchester

Computer Club, 7 PM at Chapters & Verses

2d Tuesday after 1st Monday: Village Planning Commission, 7:30 PM

2d Tuesday: Manchester Area Senior Citizens, 9:30 AM

2d Tuesday: 20th Century Club, 7:30 PM

2d & 4th Tuesday: Shakespeare Club, 1-3 PM

3d Tuesday: Manchester Historical Society, 7:30 at Blacksmith Shop

4th Tuesday: La Leche League 10 AM, call 428-8831 for location and info

4th Tuesday: Klager PTO 6:30 PM at school. Call 428-8321 for info.

4th Tuesday: Manchester Township Planning Commission

Every Tuesday: Boot Stompers at Emanuel Church 7-9 PM

Every Tuesday at Your Home: RECYCLE - containers at curb by 7:30 AM

Wednesday

1st Wednesday: Raisin Valley Land Trust, at the Blacksmith Shop, 7:30 PM

1st Wednesday: Veterans of Foreign Wars, 7:30 PM

2d Wednesday: American Legion Auxiliary 7:30 PM

2d Wednesday: Manchester Recreation Task Force 7:30 PM

3d Wednesday: Manchester Men's Club 7:30 PM

3d Wednesday, WIC Program, 9:30-3:00 Senior Citizens Bldg.

3d Wednesday: Bridgewater Township Board, 7:30 PM

3rd Wednesday: Chamber of Commerce Meeting

4th Wednesday: Manchester Township Fire Department meeting, 7:30 PM

Every Wednesday: Community Band - 7:30 PM

Thursday

1st Thursday: Sharon Township Board meets 8:00

1st Thursday: American Legion Post #117 7:30

3d Thursday: Sharon Township Planning Commission

3d Thursday: Cub Scout Pack Meeting, 7:00 PM

4th Thursday: Community Resource Center Board, 7:30

Every Thursday: AWANA 6:30-8:30 PM for kids ages 4-6th grade at Community Bible Church

Friday

Every Friday: AA MEETINGS 7:00 PM at Emanuel Church Kitchen. All are welcome, for more information call church office 428-8359

Notices

1st & 3rd Saturday: Manchester Kiwanis meets. Call 428-7722 for information on meeting place and time

1st Sunday of each month: Breakfast at the American Legion, 8 AM til noon, \$4.00 per person

Coming Events

13 Shopping Days 'til Christmas!

Pick up your Luminaria supplies

December 21, 22, 23

American Legion Dances-

Winter Dance 1-17-98

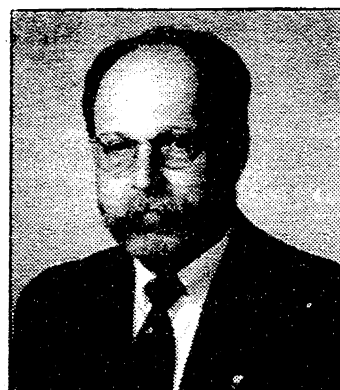
St. Patrick's Day Dance 3-14-98 8 pm-12 pm.

The Community Calendar is a regular feature of the Enterprise. If your meetings or special events should be listed here, please call us at 428-8173



Bus. (313) 475-8681
Res. (313) 428-8466
Fax (313) 475-8858

935 South Main Street
Chelsea, Michigan 48118



MIKE STARWAS
REALTOR

Dial-a-Garden
971-1129

Dial-A-Garden, a service of the Washtenaw County/ Michigan State University Extension Service, is a system of prerecorded gardening messages. The feature has a format which lets callers with a touch-tone phone select which message they wish to hear. The messages are changed monthly.

November-December 97

101 Amaryllis
102 African Violets
103 Fruiting Ornamentals
104 Late Fall Fertilizing
105 Buying a new house plant

201 Cyclamen
202 Autumn Rose Care
203 How long can seeds be stored?
204 Deer, mice & rabbit damage
205 Growing Vegetables indoors

301 Reflowering Christmas plants
302 Kitchen pests
303 Caring for Christmas plants
304 Why won't house plants flower?
305 Choosing a Christmas Tree

401 Keep your Christmas tree fresh
402 Recycle your Christmas tree
403 Salt injury on plants
404 De-icing sidewalks
405 Gardening resolutions

GUN SHOW

Saturday, December 13th 9am - 5pm
Sunday, December 14th 9am - 4pm

Washtenaw Farm Council Grounds
5055 Saline - Ann Arbor Rd.

For More Information
Call 810-227-1637

The Manchester Enterprise is published each Thursday at 109 East Main St., Manchester, MI 48158, with second class postage paid at the Manchester Post Office.

POSTMASTER: Send Form 3972 to: Manchester Enterprise, PO Box 37, Manchester, MI 48158

The Manchester Enterprise, Inc.
(313) 428-8173

Editor & Publisher
Teresa M. Benedict

Production Editor
Marsha Johnson Chartrand
Julie Schaible, accounting

One year subscription, \$18
plus \$2.00 shipping & handling
outside the U.S. Payment in U.S. dollars
only. Payment by check or money order
preferred. The Manchester
Enterprise, Inc., 109 East Main St.,
Manchester, MI 48158

The Second Front Page

More Utility Changes Coming

Consumers Energy Watches Legislation in Utility Reform

Change seems to be a fact of life in the utility business lately. The changes being discussed this week, however, are not as immediate as the change of telephone area code which we will experience beginning this Saturday.

Lawmakers in Lansing are considering sweeping reforms to the way our energy is being delivered to us. Much like the breakup of AT&T several years ago, the energy industry is in the process of being deregulated. At this point, according to Dick Stuart, Area Manager for Consumers Energy, the race is on to see whether the state Legislature or the Federal government will be the first to implement the changes.

Consumers Energy, a subsidiary of CMS Energy Company (the new name for what most of us recognize as "Consumers Power,") is hoping that Michigan has the upper hand in the decision making processes. Local control over our local power plants is a benefit for Michigan residents as well as the Michigan businesses who provide us with electrical energy, says Stuart.

Nationwide, the electrical

utility industry is a \$200 billion/year supplier of electrical energy to residential and commercial customers. Under the proposed restructuring plan, CMS Energy will be an "originator" of the energy sources, and smaller, regional suppliers - all certified by the Michigan Public Service Commission - will deliver the electricity to their customers.

A press release from Consumers Energy describes the proposed changes:

Discussions in Lansing have raised important questions about the effect upcoming electric restructuring will have on residents and businesses in Washtenaw County.

We can assure you that Consumers Energy will continue to be your local electric company. While changes in the electric industry structure, both in Michigan and nationwide, mean that customers may soon be able to choose their electric suppliers, Consumers Energy will continue to deliver the power as your local utility. For more than 110 years Consumers Energy has served Michigan and we have no plans to lessen or change our commitment.

You might be concerned

that reforming the electric system in our state could mean unexpected bill increases for rural or outstate Michigan customers. Our proposal is to freeze or reduce rates for all customers for the next four years. We could not support a program whereby urban customers see reductions and rural customers see increases. Our long-standing commitment has been to all our customers. We support growth and development throughout Michigan and will work to ensure that Washtenaw County is not adversely affected by this change.

Under the current proposals in Lansing, every customer will have the opportunity to choose an electric supplier after a phase-in period, probably in 2003. Even if you choose another supplier, Consumers Energy electric lines will still bring the power to your home, business and farm and we will still provide a full range of customer services, including restoration of power following storms. We will still work with local Chambers of Commerce, economic development organizations and other civic

groups to support programs that strengthen the local economy and benefit all customers.

The fairness issue will be an important consideration in the utility reform discussions. We believe that customers who choose to stay with Consumers Energy must not be penalized or made to pay extra for those who elect to purchase electricity from another supplier.

Consumers Energy will continue to work with your local elected officials, including your State Senator and

State Representative, to develop a fair electric restructuring program that ensures that outstate Michigan will not be charged unfairly for a program that must benefit everyone.

Stuart goes on to explain that as the huge energy companies are broken down into smaller, regional companies, this will be good news for the customers. "Electrical restructuring will happen," he says. "It is a matter of when, and how it is done, that is now the question."

NEW & USED CAR SALES



Neil Horning

THE AWARD WINNING DEALER
PALMER
Michigan's Oldest Ford Dealer



FORD
MERCURY

Stop in -
Take advantage
of the rebates on
model year-end
Clearance Prices!

475-1301

**MICHIGAN
Rose Bowl
Sweatshirts
Now in Stock
Great Male Gift**

Calamity Jane's 109 E. Main

★ Mon - Sat 10-5 Thurs 'til 8pm Sun 12-5 ★

Locally Owned and Operated

Modern Waste Systems, Inc.



7255 S. Brooklyn Rd.
P.O. Box 275 Napoleon, MI
(517) 536-4900

COUPON COUPON COUPON

One Month FREE with this coupon

For all New Customers
Some Excluded
(maximum savings of \$20)

Come Ring in The New Year With Us!

**The Black Sheep
Tavern Restaurant**

Dinner Concert with

The Raisin Pickers

Two Seatings 5:30pm and 9:00pm

Reservations required

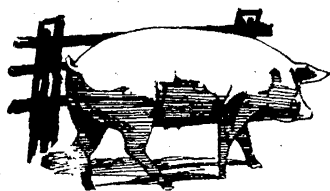
\$40 per person

313-428-7000

115 E. Main Street

Editorial/Opinion Page

Out of the Pen



- by garlene

Reach garlene via e-mail at <garlene@juno.com>.

Knowing that most of us at the **Enterprise** office are "human" and subject to error it always makes garlene feel better to know that other newspapers also have human staff persons. (Not many newspapers can claim to have a pig on staff, nor perhaps would they want to.)

Now, it is well known that everyone makes mistakes. Yes, even garlene - she believes the last time was in 1973. Most folk, however, have the luxury of making their mistakes in private. When one of us at the **Enterprise** makes a mistake it's out there for all the world, or at least all of Manchester, to see. Hopefully we have the grace to accept our shortcomings and make amends as best we can. And when we can laugh at ourselves and at our imperfections - red though our faces may be - it's even better.

So it was that shortly after a rather glaring error was pointed out to us, the following actual classified ads were found in other newspapers.

• **Lost:** small apricot poodle. Reward. Neutered like

one of the family.

• **Dinner special:** Turkey \$2.35; Chicken or Beef \$2.25; Children \$2.

• **For sale:** an antique desk suitable for a lady with thick legs and large drawers.

• Now is your chance to get your ears pierced and get an extra pair to take home, too.

• We do not tear your clothing with machinery. We do it carefully by hand.

• Tired of cleaning yourself? Let me do it!

• Mt. Kilimanjaro is the breathtaking backdrop for the Serena Lodge. Swim in the lovely pool while you drink it all in.

• The hotel has bowling alleys, tennis courts, comfortable beds and other athletic facilities.

• **For rent:** 6-room hated apartment.

• **Used cars:** Why go elsewhere to be cheated? Come here first!

• **Christmas sale:** Hand-made gifts for the hard-to-find person.

• We will oil your sewing machine and adjust tension in

your home for \$10.

• And now, the Superstore—unequaled in size, unmatched in variety, unrivaled inconvenience.

• **Help Wanted:** 3-year-old teacher needed for preschool. Experience preferred.

As evidenced above, the best spell-checking program cannot always hope to find every error. The stickiest grammarians can twist a sentence into something it was never intended to say. The most alert proofreader might overlook what seems, in retrospect, like an obvious typo.

There are times when we swear that evil gremlins are at work in the **Enterprise** office, just waiting for the opportunity to strike and cause us embarrassment. But no - it's just us "humans," with a little help from the genus *Suidae*, plugging away the best we can, to put out a newspaper week after week for 130 years.

Life is full of humans, and human errors. It's when we stop laughing at our humanity that we're in trouble.



MANN REAL ESTATE

122 W. Main St.

Office 428-8388

Your Home Town Real Estate Firm for over 20 years. Offering you multi-list service with a personal touch. Thinking of selling or buying a home or building site - Call Us Today!



Jim Mann
428-8074



Terry Walter
428-7023

Kirk Excavating

Sand - Gravel - Fill Dirt
Basements - Driveways

Licensed & Insured

428-7938

Dave Kirk
14180 Schleweis Road
Manchester

Editorial - a statement of opinion in a newspaper, or on radio or TV by an editor or publisher.

Opinion - a belief not based on certainty but on what seems true or probable. What is thought on any matter or subject; judgement or belief resting on grounds insufficient to produce certainty.

This is an **Editorial/Opinion** Page. Views expressed on this page are the opinions of the writer(s).

Teresa M. Benedict, Editor



Fusilier's

Family Farm & Greenhouse

428-0092 * 428-8982

16400 Herman Rd.

W. Austin Rd. South on Sharon Hollow Rd.



Christmas

Trees All \$15

Wreaths \$10 & up

Poinsettias
starting at \$6.⁵⁰



UNIGLOBE

Chelsea Travel, Inc.



1070 South Main Street

Chelsea, MI 48118

(313) 475-3110 * (800) 875-3113

Fax (313) 475-3748

We will be happy to help with
any of your travel needs

INDEPENDENTLY OWNED
Means Better Personal Service

Specialist in ORTHODONTICS

- 20 years Experience
- No referral necessary

515 S. Main St.
Chelsea, MI 48118
(313) 475-2260



Raymond P. Howe, D.D.S., M.S.

CLINTON FOOT & ANKLE CLINIC

301 W. Michigan Ave. • Clinton, MI

517-456-4114

Offering complete foot and ankle care for the
entire family.
- Specializing in -

- | | |
|----------------------------------------|---------------|
| Reconstructive Surgery | Laser Surgery |
| Sports Injury | Warts |
| Infant and Child Disorders | Ingrown Nails |
| Diabetic Care | Fungus |
| Foot and Ankle Injuries | Nerve Pain |
| Heel Pain | Skin Problems |
| Foot Pain | Bunions |
| Hammertoes | Calluses |
| Orthotics (Custom Casted Shoe Inserts) | |

DAVID R. LEVITSKY, D.P.M.

Board Certified Surgeon

Member of: American Podiatric Medical Association

Michigan Podiatric Medical Association

Hours: Tuesday/Fridays 10:00 - 5:00 p.m.

Saturdays 10:00-12:00

Please call for appointment - Most insurances accepted

"What are the positive effects of the sun?"

Nature's Skin Protection

It is commonly known that your natural tanning process provides protection against burning. Your natural tan offers protection that doesn't run, sweat or wear off the way sunscreen lotion can.

Vitamin D Osteoporosis Prevention

Sunlight and suntanning beds that emit UVB are reliable sources of vitamin D-3. Vitamin D is necessary for our bodies to use the calcium we get in our diet. Your skin produces Vitamin D naturally when exposed to sunlight!

Reduce Symptoms of

PMS

Exposure to bright light has been found to help alleviate some symptoms of PreMenstrual Syndrome, such as mild depression, mood swings, irritability, physical, and social withdrawal.

A Strong Biological

Clock

Having well-synchronized circadian rhythms, or biological clocks, result in a better quality sleep, daytime alertness, and optimal health in general.

Seasonal Depression Therapy

Sunlight and simulated sunlight "doses" are a successful treatment for the "winter blues."

TROPICAL EFFECTS
428-0504 • 20436 E. Austin Road

Gift Certificates &
Holiday Baskets Available.

AGENDA MANCHESTER VILLAGE COUNCIL

Monday, December 15, 1997
7:00 p.m.

1. Call meeting to order
 2. Pledge of Allegiance to the Flag
 3. Minutes of the previous meeting
 4. Approval of Agenda
 5. Correspondence
 6. Public Participation
 7. Council Committee Reports
 8. Old Business
 - a. Manchester Township Library Request for Funds
 - b. 1998 Sheriff Contract
 - c. River Ridge Development Agreement
 - d. Other
 9. New Business
 - a. CDL Drug & Alcohol Testing Consortium Agreement
 - b. Johnson Controls Site Plan Review
 - c. DPW Agreement & Personnel Policy Manual
 - d. Other
 10. Adjourn
- PUBLIC HEARING - SRLF
WATER IMPROVE-
MENT PLAN 7:30**

Synopsis - Bridgewater Township Board Meeting November 19, 1997

Supervisor called the November meeting to order with all board members present, except Mann. Agenda was presented and approved.

Minutes and treasurer's reports were given and approved. Board approved bills for the month of \$15,651.02.

Reports from Planning Commission, Mineral License Board and Zoning Board of Appeals were presented and discussed.

Priority Business included Report on the current operations of Adrian Sand and Stone. Board appointed the Supervisor to monitor the conditions and concerns with Adrian Sand and Stone.

Board approved Ordinance #28 establishing charges for emergency services. Also approved a resolution to establish fees for emergency services. Board will consider a contract with HVA for billing these services at their next meeting.

Supervisor reported on the Sewer Study Selection Committee. Four bids were received for review on the proposed project. After consideration, two firms were chosen to meet with the committee in December to give a presentation on their proposals.

BFI Clean Up Day was very successful with 113 households participating in the Fall Clean Up. Again a good number of appliances were accepted for freon removal.

The Survey of household addresses has been completed and placed on file.

Supervisor reported that the Manchester Library is again looking into long-term future committee to assess the needs and direction of the library.

South Western Washtenaw Council Of Governments Committee reported on several items that the committee will be working on.

Meeting adjourned. Next meeting will be December 17, 1997 at 7:30 PM and is open to the public.

Submitted by Karen Weidmayer, Clerk

Approved by Carol Peacock, Supervisor

PROPOSED SYNOPSIS

Special meeting - Manchester Township Board
November 25, 1997

The meeting was called to order at 7:03 PM with Board Members Widmayer, Mann and Hakes present. Macomber and Turk were absent. Also present were Planning Commission members Linda Harvey, Dick Schmitt, Mike Fusilier and Don Limpert, Planning Consultant Don Pennington, and Planning Commission Recording Secretary Kathy Kueffner.

The purpose of this meeting was to hold a joint meeting with the Planning Commission to review and discuss changes proposed for the draft of the new zoning ordinance.

Suggested language for mini-storage for the CC (Community Commercial) and CM (Community Manufacturing) proposed zon-

ing districts were reviewed. Also discussed were Township Attorney Laidlaw's comments on definitions, home occupations, water & sewer facilities, transmission structures, political signs, moving signs, kennels, parcel divisions, commercial communication towers, non-conforming uses of land and structures, and lot size and easements.

There being no further business to come before the Board, the meeting adjourned at 9:11 PM. A complete copy of these minutes may be obtained at the Township during regular office hours, which are Monday, Tuesday, Wednesday and Friday, from 8:30 AM to noon.

Submitted by Kathleen M. Hakes, Clerk; Approved by Ronald E. Mann, Supervisor



FELDKAMPS CHRISTMAS TREES & FRESH WREATHS

"You Cut or We Cut"

- Long & Short Needle Tree
- All sizes Including Oversize Varieties

Fri-Sat 9 - 5 & Sun 1 - 5

(or by appt) 428-8571

Pleasant Lake Rd./Smythe Rd. Intersection



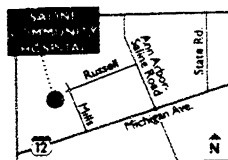
WE'RE JUST A HOP, SKIP, AND JUMP AWAY.

A broken arm. Scraped knees. Unexpected accidents. There are many reasons to take your little one to a doctor. The staff at Saline Community Hospital's Emergency Department are prepared for you and your child, 24 hours a day. We provide high-quality emergency care in a comfortable setting close to your home.

Saline Community Hospital also has emergency services available for your entire family. If you require specialized treatment, you can be transferred to our sister hospital, St. Joseph Mercy.

SALINE COMMUNITY HOSPITAL

Fast care for small emergencies.



The Saint Joseph Mercy Health System includes St. Joseph Mercy Hospital in Ann Arbor, McPherson Hospital in Howell, and Saline Community Hospital; outpatient facilities and programs, and programs and services to meet the health and wellness needs of the communities we serve.

For a physician referral, please call toll free: 1-800-231-2211.

TOWNSHIP OF SHARON

WASHTENAW COUNTY, MICHIGAN

NOTICE OF ORDINANCE ADOPTION

To the residents and property owners of the Township of Sharon, Washtenaw County, Michigan and any other interested persons, PLEASE TAKE NOTICE that at a regular meeting held on December 4, 1997, the Township Board adopted Ordinances No. 22 & 23. Ordinance 22 appears in its entirety and Ordinance 23 is summarized.

ORDINANCE NO. 22-REGULATION AND LICENSING OF MINERAL EXTRACTION OPERATIONS

SHARON TOWNSHIP ORDINANCE NUMBER 22 REGULATION AND LICENSING OF MINERAL EXTRACTION OPERATIONS

1. FINDINGS

The Township finds that mineral extraction operations can negatively affect the health, safety, and welfare of Township residents unless such operations are adequately regulated. Mineral extraction operations can pollute the environment, damage the water supplies, cause noise nuisances, dust nuisances, damage the roads and create conditions that are dangerous to Township residents. If unregulated, completed mineral extraction operations can leave land in a condition that is unsightly and presents an unattractive nuisance. The Township has authority to regulate mineral extraction operations to protect public health, safety and welfare pursuant to Public Act No. 246 of 1945, being section 41.181 of the Michigan Compiled Laws.

1.1. A Mineral License Board is established by this Ordinance to further the above purposes.

1.2. The Mineral License Board shall be composed of the Township Supervisor and four members appointed for two year terms by the Township Supervisor. The appointment of members 1 and 3 shall end on December 31, in odd numbered calendar years, and members 2 and 4 shall end on December 31, in even number years.

2. LICENSE REQUIRED

No person shall commence or continue a business activity involving mineral extraction from any property in the Township without first obtaining a mineral extraction license issued by the Mineral Extraction License Board pursuant to this ordinance.

2.1. For the purpose of this ordinance mineral extraction is

defined as the mining, quarrying excavation or other removal or processing of sand, gravel, soil, or other minerals from the location of the mineral extraction site.

2.2. For the purpose of this ordinance, processing is defined as washing, sorting, crushing, aggregating, grinding or cutting.

2.3. A mineral extraction license does not permit other uses including but not limited to on-site processing of material from off-site, asphalt, cement or other manufacturing operations of any nature.

3. COMPLIANCE WITH LICENSE

No person who has been issued a license pursuant to this ordinance shall engage in activity contrary to the terms of the license or contrary to the terms of this ordinance.

4. LICENSE APPLICATION

A license shall only be issued based on an original signed application submitted to the Township Clerk together with four duplicates as stated below. Prior to submission of an Application, the Applicant shall attend a pre-application conference with Township Officials and pay a pre-application fee, as determined by resolution of the Township Board. To be complete each application must contain the following:

4.1. Names and full address of all parties having an interest in the land and/or an interest in the operation on the site. Evidence of such interest shall be provided along with any current partnership agreement, articles of incorporation or assumed name certificate. Written consent of the legal title holder is also required.

4.2. The applicant's signature and date shall appear on the first page of the application original and on all duplicates submitted to the Township for review. In addition, each page of the complete application submittal shall include the original application date in the lower right hand corner. If the application is subsequently amended, each replacement page shall bear, in the lower right hand corner, the original application date and the date of the submittal of the page revision. All applications shall be made in a loose leaf, 3-ring binder in order to facilitate the replacement of pages.

4.3. A full legal description and drawing of the site prepared by a registered surveyor showing the number of acres on each portion of the site to be mined.

4.4. An aerial photo showing the property and adjacent areas within the 2,000 feet of the site and a map showing the property boundaries of all parcels within 500 feet of the site, including the name of the property owner and use of the site.

4.5. Detailed drawings, prepared by a registered land sur-

veyor or registered professional engineer, showing the following:

4.5.1. Existing site improvements including buildings, drives, wells, and drain fields,

4.5.2. Existing topography at contour levels of five (5) feet, interpolated from US Geological Survey (USGS) data, unless an interval of less than five (5) feet is deemed necessary for review by the Township Engineer at the Pre-Application Conference.

4.5.3. Extent of future mining areas and depth thereof;

4.5.4. Location and description of structures and stationary and/or portable equipment to be located on the site during mining operations;

4.5.5. Location and description of soil types;

4.5.6. Tree areas and other natural features to be preserved;

4.5.7. Location and types of materials for visually screening the site;

4.5.8. Location and dimensions of drives;

4.5.9. Lane widening on public roads at intersections with drives;

4.5.10. Locations of test wells for monitoring water quality.

4.6. A complete description of proposed pollution and erosion control measures.

4.7. A map showing truck routes and/or private easements to the site and a letter of preliminary comments from the Road Commission(s) impacted by the truck routes.

4.8. The estimated average amount of gravel, sand, or other materials and the maximum amount of minerals to be removed each year of the plan for mineral excavation.

4.9. Evidence that a bond or security deposit has been supplied to the Washtenaw County Road Commission in an amount sufficient for maintaining the truck haul route during the term of the license until reclamation has been completed.

4.10. The estimate average number of trucks per day, and the maximum number of trucks per day that are to haul minerals from the site each year of the plan.

4.11. A detailed reclamation plan showing that the entire property will be left in a form that is suitable for development with uses that are permitted in the district, relating such reuse to uses existing or probable for surrounding properties. The reclamation plan shall include the following elements:

4.11.1 Proposed topography at contour intervals of two (2) feet for entire site;

4.11.2 Schedule of progressive rehabilitation. After mining is completed on one specified area, quadrant, or cell, reclamation shall follow progressively in reasonable stages set forth in the plan before mining continues on

other areas of the site,

4.11.3 Proposed ground cover and other plantings to stabilize the soil surface and to beautify the restored area;

4.11.4 Concept plan of the proposed use of the site when restored, drawn to scale, and prepared by a registered engineer, registered landscape architect, or registered architect. The Concept plan shall include the proposed circulation system, including location of internal roads and connection to the external road network, delineation of drainage patterns, identification of flood plains, and conceptual layout of lots (if residential is proposed). The use proposed in the Concept plan must be acceptable to the Mineral Licensing Board based on a review of the zoning district, Township Master Plan, surrounding land uses, and site characteristics. In addition, the applicant shall describe provisions for obtaining necessary permits and approvals for the future use(s). A landfill or other disposal or refuse site is not a suitable or satisfactory use;

4.11.5 When the proposed future use, as deemed appropriate by the Mineral License Board, includes residential units or other uses requiring the use of septic fields, the Applicant shall provide a description of the construction and rehabilitation techniques that will be used to ensure that developable areas of the site have suitable soils to meet septic field standards established by the Washtenaw County Health Department. Also, provisions to supply the site with potable water for future uses shall also be described;

4.11.6 Details as to how compliance with the Restoration Standards in Section 9 will be met.

4.11.7 Description of methods and materials to be used in restoring the site;

4.11.8 The proposed date for completing all extraction operations and the date for completing final restoration;

4.12. A proposed surety bond, irrevocable bank letter of credit in satisfactory form, or security deposit in an amount sufficient to guarantee restoration of the site. In fixing the amount of such surety bond, the mineral license board shall take into account the size and scope of the proposed excavation, probable cost of rehabilitating the premises upon default of the operator, recommendation of the Township Engineer, estimated expenses to compel operator to comply by court decree, and such other factors and conditions as might be relevant in determining the sum reasonable in the light of all facts and circumstances surrounding each application.

4.13. Michigan State Fire Marshall and/or Michigan State Police permit for the on-site storage or transfer of fuels; or a written indication from the applicable

agency that a permit is not required.

4.14. A proposed liability insurance policy of not less than \$1,000,000 per incident for all liability claims arising out of the site.

4.15. An application fee, in an amount established by resolution of the Township Board, shall be provided at the time of the application submittal.

4.16. The first annual license fee, in an amount established by resolution of the Township Board, shall be provided at the time of application submittal and, if approved, subsequently on the anniversary date of the issuance of the mining permit. The fee shall be held in escrow pending decision on granting the application. The annual fee shall remain payable on all acreage not yet restored.

4.17. A description of the proposed operation including whether it is for mining and/or processing; and specifications of whether the applicant will perform extraction methods in a manner that does or does not require artificial means to lower the existing groundwater table.

4.18. Drawings, aerial photographs and plans submitted with an application shall be correlated by transparent overlays, combined maps or other means that clearly set forth site features and proposed features and requirements of this ordinance including setbacks.

4.19. Copy of permit from the Michigan Department of Natural Resources (DNR), or letter from the DNR showing that a permit is not required for the proposed mining or reclamation by the:

4.19.1. Inland Lakes and Streams Act, being P.A. 346 of 1972, as amended.

4.19.2. Goemaere-Anderson Wetland Protection Act, being P.A. 203 of 1979.

4.20. A hydrogeological analysis, prepared by a Registered Professional Engineer or Certified Professional Geologist with experience in hydrogeological studies, shall be provided for all projects that propose a dewatering operation during any phase of the mining development. The analysis shall demonstrate that the proposed operation will have no significant impact to existing private water supply wells within the influence of the site dewatering operations. The hydrogeological report shall include the following:

4.20.1. Test pumping data at the site and analytical computations used to access potential dewatering impacts.

4.20.2. A test well and computer model shall be used to determine the probable drawdown of the proposed dewatering. The hydrogeological report shall determine the direction and rate of flow of groundwater, the

upgradient and down-gradient water quality, aquifer characteristics (when soil dewatering is planned), extent of dewatering influence, and impact on surrounding water supply wells. A minimum of three (3) monitor wells shall be installed according to the requirements of the Michigan Department of Environmental Quality. Locations of wells shall be approved by the Township Engineer.

4.20.3. Well logs of existing wells within 2000 feet of the site boundaries.

4.20.4. A written statement of the impact the proposed operation will have on private wells shall be provided, as well as a plan for mitigating measures in the event that existing wells are impacted by the dewatering operations.

4.20.5. Groundwater testing of each well shall take place prior to commencing extraction operations to establish background water quality levels. Annual test of each well shall be performed and results shall be provided to the Township within 30 days of the anniversary of permit issuance. At a minimum, the ground water shall be tested for the following: Benzene, Ethylene, Xylene, Toulene (BETX), and Polynuclear Aromatic Hydrocarbons (PNA).

4.20.6. A description of the discharge rate and discharge location(s) of the dewatering operation, including an assessment of the potential for flooding in the area and downstream from the point of the discharge.

In the event that no dewatering is proposed, the applicant shall provide sufficient data to establish the direction of groundwater movement in the area. A minimum of three (3) monitor wells shall be installed according to the 3-point method, retained for future monitoring, and constructed according to the requirements of the Michigan Department of Environmental Quality. Locations of wells shall be approved by the Township Engineer. In addition, the Applicant shall supply well logs of existing wells within 2,000 feet of the site boundaries. Groundwater testing shall be performed in accordance with Section 4.20.5 above.

4.21. Four duplicate copies of all of the above except the application fee, and the first annual license fee. One duplicate is for the Township Engineer for his review and report, one duplicate is the records of the Mineral Licensing Board; one duplicate is for the Mineral License Board to attach to the Applicant's License, if approved; and the final copy is to attach to the Township's copy of the License, if approved. The original is maintained in the Township Clerk's records.

5. REVIEW OF APPLICATION BY MINERAL LICENSE BOARD

Once a complete application is submitted, the Mineral License Board shall, within 60 days:

5.1. Approve a license based

on the following findings:

5.1.1. The applicant can comply with this ordinance;

5.1.2. The operation will not adversely affect the health, safety, and welfare, of the residents of the Township;

5.1.3. The site will be restored so it is safe and harmonious with surrounding land uses;

5.1.4. The necessary fees, bonds, security deposits and evidence of insurance have been submitted;

5.1.5. The proposed operation will not adversely affect the water table or water quality or supply of any surrounding land;

5.1.6. The use proposed in the reclamation plan is acceptable, based upon a review of the Township Zoning Ordinance, Township Master Plan, surrounding land uses and site characteristics.

5.2. Disapprove the license based on one or more of the following findings that the applicant has failed to demonstrate that:

5.2.1. The applicant can or will comply with this ordinance; or

5.2.2. The operation will not adversely affect the health, safety, and welfare of the residents of the Township; or

5.2.3. The site will be restored so it is safe and harmonious with the surrounding land uses; or

5.2.4. The proposed operation will not adversely affect the water table or water quality or supply of any surrounding land; or

5.2.5. The use proposed in the reclamation plan is acceptable to the Mineral License Board, based upon the Board's review of the Township Zoning Ordinance, Township Master Plan, surrounding land uses and site clearances.

5.3. Conditionally disapprove the license until the applicant submits revised document(s) providing that the license should be approved.

5.4. Extend the period of review for an additional 30 days based on a written determination that additional review is needed.

6. ISSUANCE OF LICENSE

If a license is approved, the Mineral License Board shall issue the license in duplicate upon depositing the required fee, bond, irrevocable letter of credit, or security deposit, and proof of insurance. One duplicate original will be provided to the applicant, and the other will be maintained by the Township Clerk.

7. FORM OF LICENSE

The license shall be prepared in duplicate originals and signed by the Township Supervisor and Township Clerk, after by a majority of the Mineral License Board, and contain the following:

7.1. A full description of the operation permitted by the license based on approved plans and drawing;

7.2. A full description of the restored site based on the approved plans and drawings;

7.3. Dates for the completion of the operations and the comple-

tion of restoration;

7.4. The dates for which the permit is valid based on the continual restoration schedule approved by the Board;

7.5. Signed commitments for compliance with the ordinance and the license by all parties having an interest in the land and the operation; and that the license will reimburse all legal, engineer and investigation costs incurred by the township in establishing any violations;

7.6. That Township agents, representatives, independent contractors and engineers are authorized to enter upon the property at any time for the purpose of inspection and may extract from the property such small samples of water, soil and other materials as may be necessary to assure compliance;

7.7. That it remains subject to required annual inspections by the Township Engineer and/or other agents of the Township and payment of annual license fees; and reimbursement of the Township Engineer's fees for monitoring to determine compliance with the license;

7.8. All required attachments to the application.

8 COMPLIANCE BY LICENSEE

All persons or firms engaged in the activity of mineral extraction shall comply with the following:

8.1. Operate only with a license issued under this ordinance.

8.2. Make payment to the Township Clerk, on each anniversary date of the license, of the annual permit fee established by resolution of the Township Board, to be held in escrow pending satisfactory results of the Township's annual inspection.

8.3. Operate only in compliance with the terms and limits of the license.

8.4. Operate only between 7:00 AM and 6:00 PM Monday through Friday and between 7:00 AM and 12:00 noon on Saturdays. No operations shall be permitted on Sundays or legal holidays.

8.5. Other than as specified in the application and license, no processing of any nature, shall be conducted at any time on site.

8.6. All fixed machinery and equipment and buildings shall be located at least 250 feet from any lot line and 500 feet from any existing residence. The Mineral License Board may approve the continued maintenance and use of facilities within the prescribed setback if they were installed and used at the proposed location prior to December 4, 1997.

8.7. No extraction, processing, loading, weighing, stockpiling or other operations or equipment storage or repair shall take place closer than 250 feet from any road right of way, 500 feet from a residence or 250 feet from any other property boundary, whichever is farther.

8.8. There shall be no excavation unless there is adequate lateral support for adjoining land

as determined by the Township Engineer.

8.9. Stockpiles of soil to be used for the reclamation shall be seeded or otherwise maintained to avoid erosion.

8.10. Grading shall be maintained so that a drainage nuisance is not caused on adjacent property.

8.11. Operations shall be conducted so the noise from the site when measured outside its legal boundaries does not exceed 70 decibels ("a" scale) for a period longer than a minute. Equipment shall be installed, used and maintained so that noise and vibration emitted from the site do not exceed the level reasonably necessary for the operation of the equipment.

8.12. The operation shall be conducted so it will not cause any contamination or change in the quality of ground or surface water outside the site. The quality of ground water shall be monitored by adequate test wells as determined by the Township Engineer.

8.13. There shall be no excavation within 500 feet of any stream or waterway unless approved in writing by the Michigan Department of Natural Resources.

8.14. There shall be not more than one entrance way from a public road for each 660 feet of front lot line.

8.15. Each entranceway shall be located not less than 500 feet from an intersection of two or more public roads.

8.16. The site including ingress and egress shall be treated and maintained so that dust does not blow onto neighboring properties.

8.17. Berms, fences and landscaping shall be installed at all locations around the site which lack natural screening. The screening shall consist of one or any combination of the following,

8.17.1. Earth berms constructed to a height of 6 feet above the mean elevation of the centerline of the adjacent highway or 6 feet above the general level of the terrain along the interior property lines, whichever is higher. Such berms shall have slopes that are not in excess of 1 foot vertical to 3 feet horizontal and shall be planted with grass, trees or shrubs.

8.17.2. Plantings or evergreen trees or shrubbery in rows parallel to the boundaries of the property, not less than 4 feet in height at the time of the planting and which grow to not less than 6 feet in height at maturity and sufficiently spaced to provide effective sight barriers when 6 feet in height.

8.17.3. Masonry walls or attractive solid fences made of uniform new materials, constructed to a height of not less than 6 feet and maintained in good repair.

8.18. Where an excavation leaves standing water with a depth of greater than 4 feet, the applicant shall erect a fence completely surrounding the portion of the site where the body of water

extends, said fence to be not less than six (6) feet in height complete with gates, which gates shall be kept locked when operations are not being carried on.

8.19. Where quarrying operations result in a body of water, the owner or operator shall place appropriate "Keep-Out-Danger" signs around said premises not more than two hundred (200) feet apart.

8.20. All portions of the site not currently being mined (without mining activity for forty days) shall be graded so that slopes are not steeper than one (1) foot vertical for each two (2) feet horizontal and shall be adequately covered and planted to prevent erosion.

8.21. All fuels, chemicals and other hazardous materials to be contained on site shall be noted in the application, including material, quality, use, and method of primary and secondary containment. All containment structures or devices shall be designed and operated to prevent groundwater pollution. The applicant shall also provide a written spill response plan, in the event that a hazardous materials spill occurs on site. Said plan shall indicate how any and all contaminated material will be collected and disposed.

8.22. Washtenaw County Health Department Community Right-to Know Regulation of 1986 evidenced by copies of documentation and notices produced pursuant to said Act.

8.23. Only equipment or vehicles owned or leased by the operator shall be stored on the site overnight.

8.24. The truck and trailer license plates shall be washed or wiped clean before leaving the site on each trip.

8.25. Materials will only be loaded onto trucks reaching and leaving the site on truck routes specified on the license.

8.26. Be responsible for adequately treating against dust and improving and maintaining to Washtenaw County Road Commission standards the public roads. Bridges and culverts directly servicing the site; as necessitated by the truck traffic over the haul route to or from the site. Any roads used for the purpose of ingress and egress to said excavation site which are located within three hundred (300) feet of occupied residences shall be kept free by hardtopping with cement, bituminous substance or chemical treatment.

8.27. Maintain a record or copy of the load ticket for each truck departing with extracted minerals from the site. These records must include driver and truck trailer identification, date, time, and load; and must be made available to the Township upon demand for inspection and copying.

8.28. Potable water supply and sanitary sewage disposal systems shall be approved for the site by the County Health Department.

8.29. No material from out-

side the site shall be brought in for processing or storage.

8.30. The operators must maintain the liability insurance approved with the license and annually provide proof of that insurance to the Township.

8.31. No explosives shall be used on the site.

9. RECLAMATION

Reclamation in accordance with the following restoration standards must begin as soon as the mining of any area of the site is completed or mined to the limits shown on the application (whichever comes first);

9.1. The reclamation shall be in accordance with the license.

9.2. Ponding shall be avoided in all areas except in designated lake areas. This shall be accomplished by all excavation being either to a water-producing depth or shall be graded or backfilled to ensure that the excavated area will not retain or collect stagnant water. For the purposes of this subsection, a water-producing depth shall be defined as not less than ten (10) feet below the average summer level of water in the excavation.

9.3. In the event filling of the mined area is necessary in the course of reclamation, the fill material shall consist only of soil material, which is brought into the site in compliance with the following:

9.3.1. A detailed statement indicating the quantities of material to be disposed of, and the exact locations from which the material will be brought.

9.3.2. A report specifying in detail the testing to be undertaken by the applicant at each source location to ensure that the material being brought on site is not contaminated. The report shall include an opinion by a qualified independent soil scientist, soils engineer, hydrogeologist or geologist, confirming that the material from each source location is not contaminated.

9.3.3. Set forth in detail the arrangement and nature of all operations, including the quantity of each type of material to be brought on site and the location from which it will be brought.

9.3.4. Set forth a detailed explanation as to the routing of all vehicles bringing material to the site, and their size, weight and frequency of trips.

9.3.5. Set forth in detail the precautions taken to ensure against any soil erosion or sedimentation control problems.

9.3.6. Set forth in detail the contingency cleanup procedures to be utilized in the event of any contamination of the underlying groundwater or surface water.

9.4. In general, grades of areas which are not permanently submerged will be gently rolling to minimize soil erosion and shall be blended into existing grades in a harmonious manner. No unsubmerged grade shall exceed one (1) foot vertical to four (4) feet horizontal, unless an unmodified area remains on site that has a natural grade in excess of

1:4 and the Mineral License Board finds that modification of this area is not necessary. In addition to the above, the reclamation plan shall show an internal future development area of 200 feet from the site property lines. Within this area, site grades shall be reduced to a sufficient slope to support an internal road on residential lots fronting on at least one side of the road. This area may be reduced to 100 feet where the Mineral License Board finds that residential development is not feasible future land use for the site and the use proposed does not require a 200 foot area with less steep grades. Grades of all areas that are permanently submerged shall not exceed one (1) foot vertical to five (5) feet horizontal from the shore to the depth of five (5) feet below the annual low water elevation. Notwithstanding the above, the maximum depth shall not exceed fifty (50) feet.

9.5. Topsoil of a quality equal to that occurring naturally in the area shall be replaced on excavated areas not covered by water, roads or other structures. The depth of topsoil over the entire site shall be sufficient to allow sod to grow.

9.6. Vegetation shall be restored by the appropriate seeding of grasses and the planting of trees and shrubs to establish a permanent vegetative cover on the land surface, to minimize erosion, and ensure long term stability of any sloped areas.

9.7. Reclamation must be completed within 12 months of cessation of mining operations. All plant structures, buildings, stockpiles and equipment shall be removed, provided, however, that buildings and structures which have a function under the reclamation plan and which can be lawfully used under the requirements of the zoning district in which the property is located may be retained. No further mining shall be permitted on a site when an area within the site subject to reclamation has not been restored within this time limit.

As part of the reclamation process, all site debris including tree stumps, man-made materials, etc. shall be removed from the site and properly disposed.

10. REVOCATION/SUSPENSION

The Township Supervisor, in the case of a violation of this ordinance, may temporarily revoke a license issued under this ordinance for up to 30 days where the public health, safety or welfare may be affected. Otherwise revocation shall only occur after a warning, notice and a hearing before the Mineral License Board which has the authority to permanently revoke the license or temporarily suspend it where conditions are found to exist which indicate the licensee is operating in violation of the terms of his license, or this ordinance, or in a manner adversely affecting the health, safety, or welfare of the residents of the Township.

11. APPEAL

Any applicant or affected property owner may appeal a decision of the Mineral License Board under this ordinance.

11.1. An appeal shall be decided by the Township Board after adequate notice, and a public hearing.

11.2. Based on facts presented at an appeal, the Township Board may make findings re-determining compliance with Section 5 of this Ordinance and remand the application to the Mineral License Board for granting of the license or other final disposition of license, extend time limits of this ordinance, and restore a revoked license.

12. EXEMPTIONS

This ordinance shall not apply to the following:

12.1. Operations that involve the removal of 100 cubic yards or less of material per year.

12.2. Usual and customary excavation associated with the construction of structures or septic tanks/fields under a permit from the Township and/or County.

12.3. The usual and customary balancing of land by cutting and filling on a site in preparation for a development approved by the Township in accordance with all Township ordinances and regulations. This exemption shall not permit the removal of more than 100 cubic yards of material from the site.

12.4. Usual and customary excavation of land in the public right-of-way, when associated with a public utility or public facility improvement.

12.5. Ponds constructed in accordance with applicable provisions of the Zoning Ordinance.

13. VIOLATIONS

13.1. Persons violating this ordinance may be fined \$500.00 and imprisoned for 90 days for each violation. Each day an operation is carried on in violation of the ordinance shall be considered a separate violation.

13.2. An official designated by the Township Board shall be responsible for investigating violations of this Ordinance, distributing notices of violations, and other related administrative functions. In general, when a violation has been identified and confirmed, the enforcement official shall issue a Notice of Violation to the owner and operator of the facility, advising a 15 day period to cease the violation and come into compliance with the Ordinance. If the violation continues, the enforcement official shall contact the Township Supervisor to schedule a Show-Cause hearing to be held by the Township Board to determine if the matter should be referred to the Township Attorney for immediate remedy through a court of competent jurisdiction. A Notice of Show-Cause hearing including date, time, and place of the hearing shall be sent to the owner and operator at least 10 days prior to conducting the Show-Cause hearing. Upon re-

view of findings of fact, the Township Board shall take appropriate action to ensure the Ordinance standards and plan of approval is met. In the event that the violation requires immediate action in a court of competent jurisdiction, the Township Board may refer the matter to the Township Attorney for action without giving notices set forth above. The Township Attorney may seek injunctive or other appropriate relief.

14. EFFECTIVE DATE

14.1. This ordinance shall take effect 30 days after the date of publication of the notice of adoption. Beginning with that date all persons or forms wishing to commence mineral extraction operations must comply with the ordinance.

14.2. Owners and operators of all extraction operations existing prior to the effective date of this ordinance must apply for the required license within 90 days of the effective date and must be in compliance with all provisions of this ordinance within 180 days of the effective date of this ordinance.

15. SEVERABILITY

It is the intention that if any portion of this ordinance is found, for any reason, to be invalid, the remainder of the ordinance shall remain in effect.

16. VARIANCES

When there are practical difficulties in the way of carrying out the strict letter of ordinance, the Township Board shall have the power to vary or modify the application of the provisions of this ordinance, in accordance with this section, so that the intent and purpose of the ordinance shall be observed, public safety secured, and substantial justice done.

Any applicant may apply for a variance from any provision of the ordinance by filing an application for variance with the Township Clerk and paying a variance application review fee. The Township shall hold a public hearing upon such application within forty-five (45) days from its filing. The Township Clerk shall give notice of the hearing to the owners of all property within three hundred (300) feet of the subject property. The notice shall be mailed to each such party by first class mail or hand delivered and shall be published in a newspaper of general circulation in the Township not later than seven (7) days prior to the hearing. The Township Board may attach reasonable conditions in granting the variance from any provision of the ordinance to insure that the standards and intent of the ordinance are met. Violation of conditions shall be considered a violation of the Ordinance and shall be subject to the penalties stated in Section 13.

17. RELATIONSHIP TO OTHER LAWS

Whenever regulations or restrictions imposed by this Ordinance are either more or less restrictive than regulators or restrictions imposed by this or any other governmental authority through

legislation, rule or regulation, the regulations, rules or restrictions which are more restrictive or which impose higher standards or requirements shall govern. However, wherever there is a conflict in determining which is the more restrictive or imposes the higher standard, the standards of this regulatory ordinance shall govern. Regardless of any other provision of this Ordinance, no land shall be used and no structure erected or maintained in violation of any state or federal control or environmental protection law or regulation.

18. ADOPTION

This Ordinance is adopted by the Sharon Township Board at a meeting held on December 4, 1997. This Ordinance, or a summary of it together with a location in the Township where a true copy of the Ordinance can be inspected or obtained, shall be published in the Manchester Enterprise within 30 days of adoption. The Ordinance shall take effect 30 days after the date of publication of the notice of adoption.

ORDINANCE NO. 23 REGULATION OF TOWNSHIP CEMETERIES

Section 1. Title This ordinance shall be known and cited as the SHARON TOWNSHIP CEMETERY ORDINANCE.

Section 2. Definitions of Cemetery Burial Spaces and Lots

Section 3. Sale of Burial Spaces or Lots

Section 4. Purchase Prices and Transfer Fees

Section 5. Markers, Monuments and Mausoleums

Section 6. Interment, Disinterment and Reinterment Regulations

Section 7. Cemetery Care and Maintenance

Section 8. Forfeiture of Vacant Cemetery Burial Spaces or Lots

Section 9. Records

Section 10. General Regulations

Section 11. Penalties

Section 12. Severability

Section 13. Effective Date

This ordinance shall take effect 30 days after publication of the notice of adoption.

Adopted: 12/04/97

Published: 12/11/97

Effective: 1/10/98

PLEASE TAKE FURTHER NOTICE that the full text of this Ordinance will be available for inspection at the Manchester Township Library and/or may be purchased at the office of the Township Clerk during regular business hours of regular business days from the date of this publication.

Teri L. Aiuto

Sharon Township Clerk

313-428-7002

**Police Beat -
WCSD Station 4,
Village of
Manchester**
Week of December 1-7

Monday, December 1: 12:06 PM Ordinance Violation - blight - E. Duncan; 7:31 PM Traffic Violation - hazardous - E. Main St.; 11:37: PM Family Trouble, W. Main.

Thursday, December 4: 6:00 AM Larceny from vehicle, Granger St.; 6:06 AM Larceny from vehicles, Wolverine St.; 6:07 AM Larceny from vehicles, Spring St.; 8:24 AM Larceny from van, Parr Rd.; 9:08 AM Larceny from vehicle, Parr Rd.; 5:59 PM Suspicious person/ incident, E. Main

Friday, December 5: 2:44 AM Noise complaint, E. Duncan; 1:28 PM Private Property Crash, Hibbard St.

Saturday, December 6: 3:18 AM Medical emergency, Riverbend; 9:56 AM Larceny, Parr Rd.; 11:20 AM Traffic Crash, Beaufort

Cop Beats the Pavement



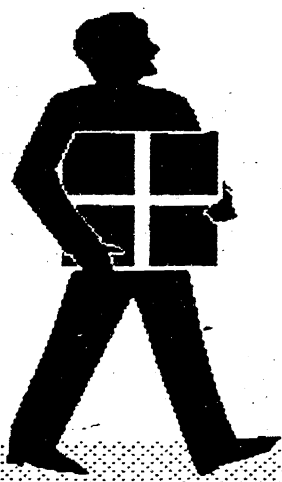
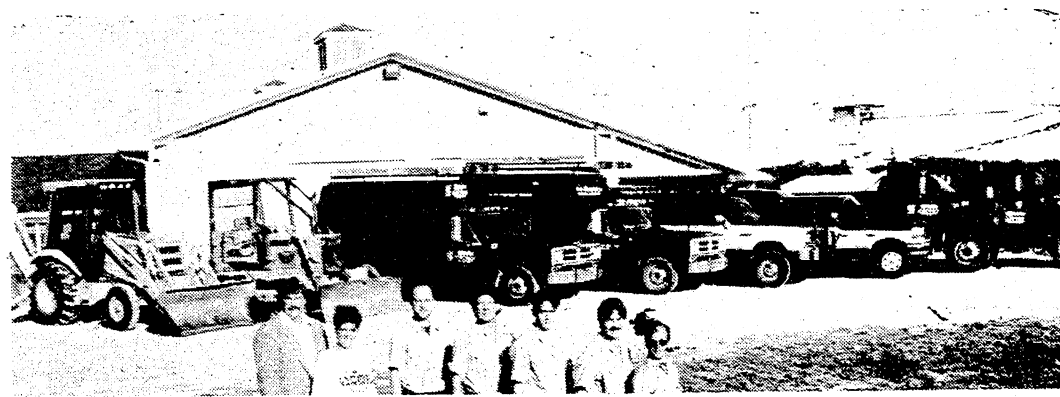
Responding to a citizen challenge that "the cops in town sit around eating donuts and drinking coffee all day," Deputy Marcus Kirby took the challenge and ran a 50-yard and 100-yard dash with Justin Whitaker to see who was in the best shape. The results can best be termed a draw, since Kirby won the 100 yard dash and Whitaker took first place in the 50-yard.

STEIN ELECTRIC COMPANY, INC.

**Licensed & Insured Contractor 24 Hour Emergency Service
Motor Controls & Lighting**

Ag. • Commercial Industrial • Institutional Residential • Backhoe
& Trenching Services 50 ft. Bucket Truck

Rick Graustein • Manchester, MI • 313-428-9050



"Ship Where You Shop"

We can take care of your last minute shipping needs here. Just bring it along with your shopping list and we'll take care of the rest.

*We have the supplies for you to
Do-It-Yourself too!*



Manchester Pharmacy

128 E. Main • 428-8393
Mon-Fri 9 - 6:30 Sat 9 - 5



The Bridgewater Vet
WILLIAM K. WELLMAN, D.V.M

Clinic •
Outpatient Surgery •

9066 AUSTIN ROAD
BRIDGEWATER, MI 48115

(313) 429-5889
(313) 429-6074

FODOR'S

Christmas Tree Farm



You cut or Fresh-cut
Douglas, Concolor & Fraser Fir -
Blue & White Spruce -
White, Scotch & Austrian Pine
All Sizes - All Prices

Children's' Tree \$5.00

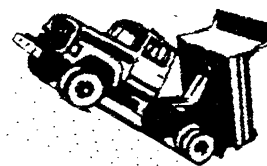
Roping - Wreaths - Gifts - Snacks
Free: Wagon Rides - Animals - Animated Toy House
Santa will be here on weekends!



Saws & Tree Cleaning Provided

3360 Burtch Road,
3-1/4 mi. south of Grass Lake Traffic Light
open daily 10 til 6 p.m. • 517-522-4982

L&B Excavating



Basements
Driveways ■ Drainfields
Grading ■ Land Clearing ■ Trucking

Bruce Lobbestael
-Licensed and Insured-

517-456-4459 ■ Manchester, Michigan



Join Us For A New's Year Eve
You'll Remember For Years To Come
Make Your Reservations NOW!!

**Haarer's
Meeting Place**

233 E. Main * 428-9500

*Treat Someone to Dinner -
A Gift Certificate from
Haarer's is a perfect gift
to give - stop in and pick
one up today*

BAPTIST CHURCHES

NORTH SHARON BAPTIST CHURCH - Bobby D. Toler, Pastor; Tim Butterfield & Robert Burton, Assistant Pastors, Sylvan & Washburn Rds - 428-7222; SS 10 AM; Morning Church 11 AM; Eve Church 7 PM; Weds Bible Study & Youth Mtg 7:30 PM

VICTORY BAPTIST CHURCH (GARBC) - Rev. Jon King, Pastor; 419 S. Macomb, 428-7506, Sunday School 9:45 AM; Morning Worship 11 AM; Evening Worship 6 PM; Wednesday Bible Study & Prayer 7 PM

CATHOLIC CHURCH

ST. MARY CATHOLIC CHURCH - Rev. Fr Charles Irvin, Pastor; Telephone 428-8811; Masses: Monday thru Wednesday, Friday 8:30 AM; Thursday, 7 PM; Saturday 5 PM; Sunday 8:30 & 10:30 AM

EPISCOPAL CHURCH

ST. BARNABAS EPISCOPAL CHURCH- Rev. Jerrold F. Beaumont, OSP, MTh, DD; 20500 Old US-12; Chelsea; 475-8818; Worship Sundays at 10 AM

LUTHERAN CHURCHES

OUR SAVIOR LUTHERAN CHURCH - (Missouri Synod) Rev. Dale Grimm, Pastor - 1515 S. Main, Chelsea; 475-1404; Heritage Service 8:15 Contemporary Worship 10:30 AM Sundays

ST. JOHN'S LUTHERAN CHURCH - Rev. Erling Aaserud, Pastor; Austin Road, Bridgewater; 429-7434 Sunday School 9:15 AM; Worship 10:30; various mid week & Bible Study groups

ST. THOMAS LUTHERAN CHURCH- Rev. John Kayser, pastor; 10001 W. Ellsworth Road (5 miles north and 6-1/2 east of Manchester); 663-7511; Sunday School 9:30 AM; Worship 10:45

ZION LUTHERAN CHURCH - Pastor David Hendricks; 3050 S Fletcher Rd., Chelsea; 475-8064; Summer Worship 9:30 AM

UNITED METHODIST CHURCHES

MANCHESTER UNITED METHODIST CHURCH - Rev. Thom Davenport, Pastor; 501 Ann Arbor St. Parsonage 428-8013; church 428-8495. Sunday School, 9 AM, Worship 10:30 AM

SHARON UNITED METHODIST CHURCH - Rev. Peggy Paige, Pastor, Corner M-52 and Pleasant Lake. Parsonage 428-8430; church, 428-7714; Sunday School 10 AM, Worship 11 AM

MORMON CHURCH

CHURCH OF JESUS CHRIST OF LATTER DAY SAINTS (MORMONS) - Gary Spooner, Branch Pres; 1330 Freer Rd., Chelsea, 475-1778; Sacrament 9:30 AM; Sunday School, 10:40; Relief Soc, Priesthood & Youth 11:40

NON DENOMINATIONAL CHURCHES

COMMUNITY BIBLE CHURCH - Pastor Jody Riethmiller; 8400 Sharon Hollow Rd., 428-8709; Worship 10 AM; Sunday School 11:30 AM; Wednesday Bible Study & Prayer 7:30 PM. All are welcome!

IRON CREEK COMMUNITY CHURCH - Tom Butterfield, Pastor; English & Sharon Hollow Rds.; Sunday School 10 AM; Morning Church 11 AM; Sunday Evening 7 PM

CLINTON ASSEMBLY OF GOD - Rev. Richard Coury; 13300 Clinton Manchester Rd; 517-456-7510; Sunday School 9:30 AM; Worship 10:45; Sunday Eve 6:30; Weds Prayer, Bible Study, Youth 7 PM

UNITED CHURCH OF CHRIST

BETHEL UNITED CHURCH OF CHRIST - Rev. Richard E. Hardy, minister - 10425 Bethel Church Rd. at Schneider; Parsonage & Church 429-7155/428-8000; Church Service 9:30 AM

EMANUEL UNITED CHURCH OF CHRIST - Rev. Dr. Vincent Garroli, Pastor 324 E. Main; 428-8359; Sunday School 9:15 AM; Worship 10:30 AM; Fellowship 11:30 AM

ST. JOHN'S UNITED CHURCH OF CHRIST - Rev. Dr. Nancy M. Doty, Pastor; 12376 Waters Road at Fletcher, Rogers Corners; Worship & Sunday School 9:30 AM

UNITY CHURCH

UNITY CHURCH OF JACKSON - 3385 Miles Road, Ackerson Lake, Jackson, 517-764-6900; 11 AM Sunday Services & Sunday School

MANCHESTER UNITED METHODIST CHURCH

Wednesday, December 10: 3:15 PM Scouts; 7:00 PM Bible Study; 7:30 PM Bell Choir

Thursday, December 11: 3:15 PM Scouts; 7:00 PM Trustees; 7:30 PM Choir Practice

Saturday, December 13: 9:30 AM Women at the Well @ Beckie Brewis' home

Sunday, December 14: 9:00 AM Sunday School; 10:30 AM Worship; 11:45 AM Choir Practice; 12:00 Noon UMYF; 4:30 PM Chili Meal; 5:30 PM Tree of Lights; 6:00 PM Christmas Caroling

Monday, December 15: 3:15 PM Scouts; 6:00 PM DISCIPLE Bible Study

Tuesday, December 16: 5:00 PM Scouts; 7:00 PM Finance

Wednesday, December 17: 12 Noon UMW; 7:00 PM Bible Study; 7:00 PM Choir Cantata Practice; 8:00 PM Bell Choir

Thursday, December 18: NO AD COUNCIL

EMANUEL UNITED CHURCH OF CHRIST

Wednesday, December 10: 1:00 PM Emanuel Quilters; 4:30 PM Meat loaf Dinner; 5:30 PM Jazzercise; 6:00 PM Cub Scouts; 6:30 PM Bell Choir; 6:30 PM Webelos; 7:00 PM Basket weaving; 7:30 PM Adult Choir

Thursday, December 11: 9:30 AM Jazzercise; 12 Noon Sr. Meal; 6:30 PM Brownies; 6:30 PM Worship; 7:00 PM Bible Study; 7:30 PM Volleyball; 7:30 PM Board of Deacons

Friday, December 12: 7:00 PM AA

Saturday, December 13: 9:30 AM Jazzercise

Sunday, December 14: 9:00 AM Sunday School; 10:30 AM Worship Service/Christmas Cantata; 11:30 PM Fellowship Time; 11:45 AM Confirmation Class; 3 - 5 PM Christmas Open House; 5:30 PM Tree of Lights; 6:30 PM Christmas Caroling

Monday, December 15: 5:30 PM Jazzercise; 6:30 PM Daisies

Tuesday, December 16: 8:45 AM School Meeting; 9:30 AM Jazzercise; 12:00 PM Sr. Meal; 7:00 PM Preschool Christmas Program; 7:00 PM Boy Scouts; 7:00 PM Church Council

BETHEL UNITED CHURCH OF CHRIST

Wednesday, December 10: 7:00 PM Women's Circle

Sunday, December 14: 9:30 AM Worship Service - "The Gift of Christmas; 10:30-12 Noon Sunday School

Monday, December 15: 6:00 PM Children's Choir; Youth Choir; 6:30 PM Choir Potluck; 7:00 PM Church Board; Senior Choir after Potluck

ST. JOHN'S UCC, ROGERS CORNERS

Sunday, December 4: 9:30 AM Worship & Sunday School

ST. JOHN'S LUTHERAN, BRIDGEWATER

Wednesday, December 10: Junior & Bell Choirs, 6:30; Mid-week Advent Service, 8 PM; Sr. Choir, 9 PM

Thursday, December 11: Mary Martha Circle Christmas Potluck, 6 PM

Sunday, December 14: Sunday School, 9:15 AM; Worship w/Holy Communion, 10:30 AM; Christmas Caroling, 6 PM

Monday, December 15: Church Council, 7:30 PM

Wednesday, December 17: Junior & Bell Choirs, 6:30; Mid-week Advent Service, 8 PM; Sr. Choir, 9 PM

ST. THOMAS LUTHERAN CHURCH

Wednesday, December 10: 7:30 PM Advent Service

Saturday, December 13: 8:30 am Confirmation Class

Sunday, December 14: 9:30 am Sunday School and Bible Class

Wednesday, December 17: 7:30 PM Advent Service

Thursday, December 18: 8:00 PM Men's Bible Study at Clyde Krueger

COMMUNITY BIBLE CHURCH

Thursday, December 11: Awana Clubs for children ages 4-6th grade 6:30-8:30 PM

Sunday, December 14: 10:00 AM Worship; 11:30 AM Sunday School

ST. MARY CATHOLIC CHURCH

Wednesday, December 10: 7:00 PM BeFriends Meeting

Thursday, December 11: 5-6:30 PM Cub Scouts Meeting - Church Hall

Friday, December 12: 3:30-4:45 PM Children's Choir

Sunday, December 14: 9:30 & 11:30 AM Adult Choir; 10:30 AM R.C.I.A. Rite of Acceptance; 10:30 AM Preschool/Kindergarten Rel Ed.; 6:30 PM Confirmation meeting with Sponsors at Church Hall

Monday, December 15: 7:30 PM Communal Penance Service @ St. Joseph's Dexter

Tuesday, December 16: 3:15 -4:15 PM Rel Ed 5 & 6 @PC; 3:30-4:30 PM Grades 1-4 @ Klager; 7-8 PM 7/8th Rel Ed @ PC; 7:30 PM Communal Penance Service @ St. Mary's Manchester

Wednesday, December 17: 7:30 PM Communal Penance Service at St. Mary's Chelsea

SHARON UNITED METHODIST CHURCH

Wednesday, December 10: 8:15 PM Chancel Choir Practice

Wednesday, December 17: 8:15 PM Chancel Choir Practice

ZION LUTHERAN CHURCH

Wednesday, December 10: 7:30 PM Church Council

Thursday, December 11: 12:30 PM WOZ Christmas Party; 7:30 PM Advent Alternative Service at Old Zion

Friday, December 12: 7:00 PM Catechism overnigher

Saturday, December 13: 10-12 Noon Dress Rehearsal for Christmas Program

Sunday, December 14: 9:00 AM Dress for program; 10:15 AM Worship &* Sunday School Christmas Program; Brunch; Junior Youth Wrap Gifts; 5:30 PM Samaritan Tree of Lights

Tuesday, December 16: 7:30 PM Senior Choir

Wednesday, December 17: 7:30 PM In Depth Bible Study; 7:30 PM Old Zion Board

Come one, come all to Zion Lutheran's first ever Advent Services. Services will be held at the Historic Zion on the corner of Waters Road and South Fletcher in Chelsea. There are only two more services this year, December 11 and 18. Come as you are and enjoy an informal service for the whole family.

The Church Page is brought to you by these generous sponsors:

Duke & Barb Schaible		Manchester Plastics	Wacker's General Store	Gene DeRossett
PILOT METAL PRODUCTS A Division of Pilot Industries	ALBER ORCHARDS	DR. CHARLES LYON, D.O.		Manchester Tool & Die
David Chartrand	Norm & Olga Walz	MAID IN AMERICA®	HENDLEY & DATSKO, P.C. Attorneys at Law	Manchester Chiropractic Clinic
Kim's Kountry Kitchen	S-K Sales, Inc.	Kiwanis of Manchester	Harold Buss	
THE MANCHESTER ENTERPRISE	Manchester Manor		Gene & Gertrude Smith Pinnacle Engineering	Harper's Meeting Place
MANCHESTER CAR WASH	Dan's Westside Automotive	Kleinschmidt True Value Hardware		Clark & Penny Getty

The Basics of Mutual Fund Investing

- by Timothy W. Schreiber of Equitable Life Assurance Co

You may be one of the record number of investors flocking to the mutual fund marketplace these days, seeking the potential for higher rates of return. Or, perhaps you have invested in mutual funds for many years. In either case, this back-to-basics discussion of mutual fund investing may benefit you.

A mutual fund pools assets of people seeking similar investment objectives. By joining the "pool", these individuals own "shares" of the fund in proportion to the amount they invest. Each investor has a partial interest in each of the fund's underlying investments and shares in any profits. Professional money managers invest this pool of money in a variety of stocks, bonds or other securities that are consistent with the fund's stated objective, such as maximum capital growth or tax-exempt income.

By investing in mutual

funds, individuals enjoy a level of diversification and professional money management they may otherwise find difficult to achieve. Diversification, or owning a wide assortment of securities in various industries and companies, can help protect against large losses. That's because, even if some securities falter, others may perform well. In addition, the full-time professional management inherent in most mutual funds appeal to investors because many people lack the time, know-how or commitment to manage their own portfolio.

Usually, mutual funds are characterized by their investment objective. Growth funds offer capital appreciation potential by investing primarily in various types of stock. Because growth funds have a higher degree of risk, they should be considered long-term investments. Income funds seek to provide more safety

of principal and high income by investing in high yield common stocks and bonds. Investors who desire both current income and capital gains can invest in balanced funds. Specialty funds typically concentrate their holdings in a specific industry or geographic area and usually provide long-term growth potential with some current income.

The objective of a particular mutual fund often affects its risk level. Typically, the higher the desired return, the more risk a fund manager takes in the investments. Returns on the more conservative funds may be lower than those of the more aggressive funds.

Investors may make money from mutual funds in basically three ways: dividend income, capital gain distributions and growth in capital. Dividend income payments are dividends and interest earned on the fund's investments. Capital gain distributions are payments made

from profits realized on the sale of securities held by the fund. Growth in capital occurs when the fund's underlying investments increase in value, and investors sell their fund shares at a price higher than the purchase price.

Of course, investors can lose money if the fund managers are not successful with their investments. There is no guarantee that investment objectives will be achieved. Also, it is important to real-

ize that mutual funds are not federally insured (even if sold through a bank), although certain types of funds invest in securities that are insured.

Before investing in any mutual fund, consider your goals, risk profile and investment time horizon. Then select a fund that matches your objectives. Read the prospectus carefully before investing.

- TWS

Timothy W. Schreiber
(313) 997-9500
Fax: (313) 997-9822



EQUITABLE

Member of the Global AIA Group

350 S. MAIN ST., STE. 210

ANN ARBOR, MICHIGAN 48104

Registered Representative

EQ Financial Consultants, Inc.

- a subsidiary of Equitable -

Agent

The Equitable Life Assurance Society of the United States

New York, NY 10104

(212) 554-1234

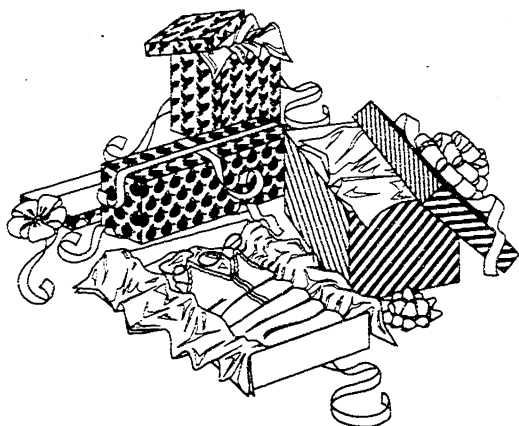
*Spread the Holiday Joy
this Season!*

Stop in and check out our
Christmas Coupon Sale
good thru 12/15/97

Lots of
Gift Ideas
to choose
from

Gift Wrapped
Russell Stover
candy too!

We have a Wide selection of
Christmas Hallmark Greeting
Cards, Wrapping Paper,
Ribbons and Bows for all
your Holiday
Wrapping Needs



Manchester Pharmacy

128 E. Main • 428-8393

Mon-Fri 9 - 6:30 Sat 9 - 5

**ROBERTS
GLASS**

Windshield Repair & Replacement

610 E. Industrial Dr.
Chelsea, MI

475-5811

Support the Men's

Club

Now

Open!

**Christmas
Tree Sale**



Trees
\$20-\$30

Located on Adrian St. In Tirb's
Chevrolet Lot

Scotch & White Pine, Blue & White Spruce,
Douglas Fir

100% of proceeds go back into the community

Teddy Bears

Every Home Needs One

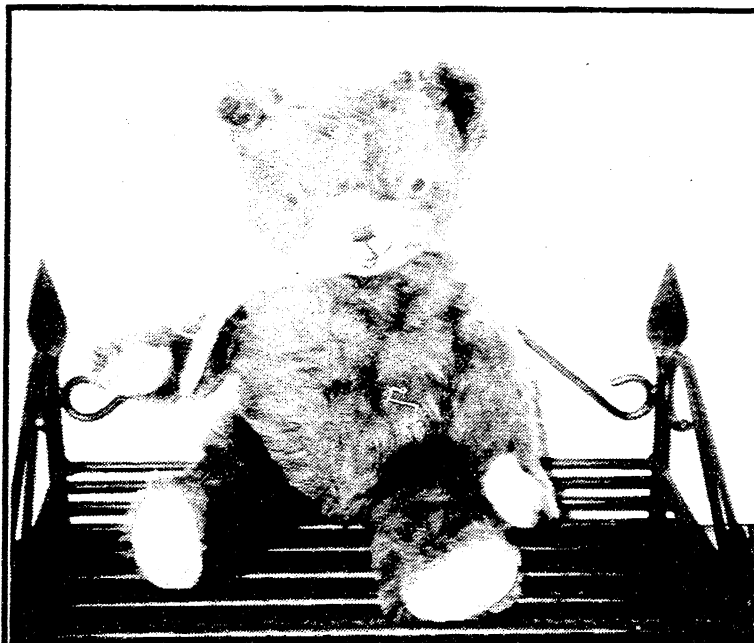


A small representation of Nancy Dietrich's Teddy Bears. From Left to right: A squeaker, the one eared Teddy, a handmade of mohair with stitched facial features, An Ideal Toy Co. growler with original tag and price of \$4.85, and three very early humpbacks with metal eyes stuffed with excelsior. The antique Teddy Bear books are also part of her collection.

tures up more thoughts of the innocence of childhood and the comfort of a reliable friend?

Early Teddy Bears were created with a humped back. Many of these humpbacks were made of mohair with metal shoe buttons, oreveneven glass buttons foreyes, and stuffed with straw and wood shavings (excelsior). Nancy Dietrich, an antique dealer and fabulous friend shared with us many of her Teddy Bears. Nancy has a soft spot in her heart for Teddy Bears and she comes to life with them. She talks to them and

five identical Teddy Bears she'll show you their different expressions. She's right - taking the time to look at the Teddy Bears. I do see one's eyes may twinkle a little more than another; or one is smiling more. Another holds his arms out just a little further, for you to pick it up and hug it. Nancy has some very old Teddy Bears and one is from the Ideal Toy Company with the original tags on it. She also has a very early humpback Teddy Bear which she bought for 50¢ at an auction - he has only one ear but



This Teddy Bear has been well loved. It is from the mid fifties and is a growler. When first received this Bear scared it's infant owner but became well loved over the years.

How did Teddy Bears come about? The actual creation is clouded in controversy. But once upon a time, one way or another, the Teddy Bear was born.

President Theodore Roosevelt seems to be the stem of many of the legends of the Teddy Bear. The Washington Post ran a story on November 15, 1902 relating a hunting incident that may have initiated the creation of the original American "Teddy's Bears." President Roosevelt refused to shoot a bear while on his outing, which in turn brought

about a cartoon the following day.

Rose and Morris Michtom, who were shopkeepers in Brooklyn, New York, had displayed two toy bears in their window which Rose had hand made of light colored plush, stuffed with excelsior, and black shoe button eyes. Morris sought and received permission from President Roosevelt himself to call the new toys "Teddy's Bears." Their success was overwhelming and hence Ideal Novelty and Toy Company was created in 1907.

About the same time the

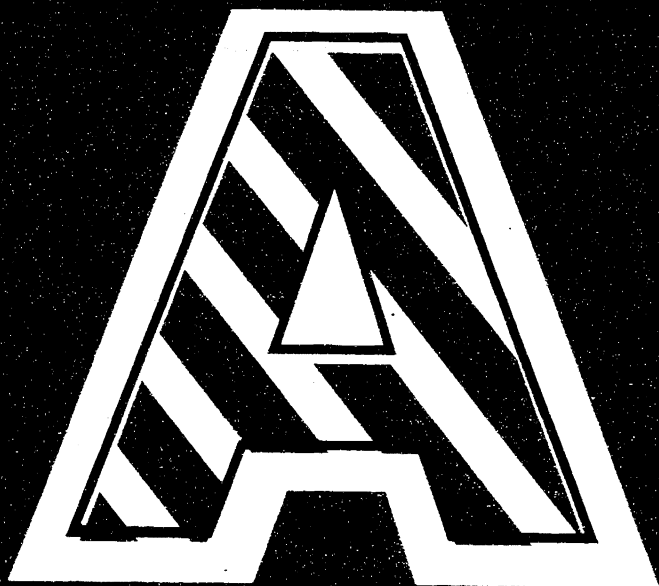
Michtoms were surfacing in America, Margarete Steiff the founder of the Steiff Company in Germany also made a wonderful stuffed bear toy during this period. Steiff was a victim of polio and want wanted to earn her own living and be independent, so she learned to sew. She created unusually fine-quality stuffed animals, the first being elephants. And so the Teddy Bear was created.

Today no home should be without one, commented a friend - and I certainly agree. What other stuffed, furry creature con-

eventhough some people might consider her as crazy, she believes a Teddy Bear has to "talk to you," for you to pick it off the shelf at a store or antique show.

As she looks over a group of

he is precious and lovable. She has handmade ones from mohair with sewn on features, a Teddy Bear purse, new twins and of course the well known Beanie Baby Teddy Bears.



ANT FARMS TO ZOOM LENSES. ANGORA SWEATERS TO ZYDECO MUSIC. ACTION FIGURES TO ZEN PHILOSOPHY BOOKS. AT BRIARWOOD, YOU'LL FIND PLENTY OF HOLIDAY GIFT IDEAS FOR EVERYONE ON YOUR LIST. WITH 135 GREAT STORES LIKE KAY BEE TOY & HOBBY, STRUCTURE, VICTORIA'S SECRET AND DOUBLEDAY BOOK SHOP, HOLIDAY SHOPPING IS AS EASY AS A, B, C.

BRIARWOOD

HUDSON'S, JACOBSON'S, JCPENNEY, SEARS AND 135 OTHER GREAT STORES AND SERVICES. 1-94 AT STATE ST., ANN ARBOR
MON. - SAT. 10 A.M. - 9 P.M.; SUN. 11 A.M. - 6 P.M. EXTENDED HOLIDAY HOURS. DEPARTMENT STORE HOURS MAY VARY. (313) 761-9550

Teddy Bears

Teresa M. Benédict

Some of us have fond memories of our first Teddy Bears. Mine is a large pink and white Teddy Bear that my brother won for me at the Manchester Community Fair back when I was five. He was at the duck pond and drew out the winner and turned to me, looked down and said, "You pick out the bear you want Teresa." Even to this day it brings joyous tears to my eyes. This big old bear has a rubber nose and wiggly eyes and has traveled the world over with me.

Marsha was lucky enough to have a growling Teddy Bear as a child which was given to her by her parents. He, too has lived through many fond memories with her - though he no longer growls he could still tell many stories. Growly Bear sleeps in her room on a special shelf. Her children have snuggled up with him many times over the years. He is guaranteed to make them feel better.

My son, Zachary received a blue furry musical Teddy Bear from a dear friend. He was just hours old when she arrived at the hospital early in the morning on her way to work with his first Teddy Bear in her hand. That bear comforted him to sleep many nights with it's soothing music.

Reasons abound for making a bear an important part of every household. For die-hard bear lovers, these reasons go without saying. For those who need extra encouragement, here are some great reasons.

Teddy Bears do not mess up the house. You never have to worry about coming home after a long hard day at the office and find a bear-related disaster.

You won't have to hide financial matters from your bear. It doesn't care how much money you make or how much you spend, and you're always making more money than it does.

A Teddy bear will not question your sense of style or taste.

After all, most of the time a bear is only clad in a satin bow.

Tact is another quality a Teddy Bear possesses. It will never question your authority on any subject, and would never dream of correcting you in front of company.

A Teddy Bear remains calm at all times. No matter how frustrated you get and how much you rant and rave about something, your Teddy Bear will never get upset or frustrated with you. In fact, an aura of tranquility surrounds your Teddy that will eventually rub off on you when you finish your tirade.

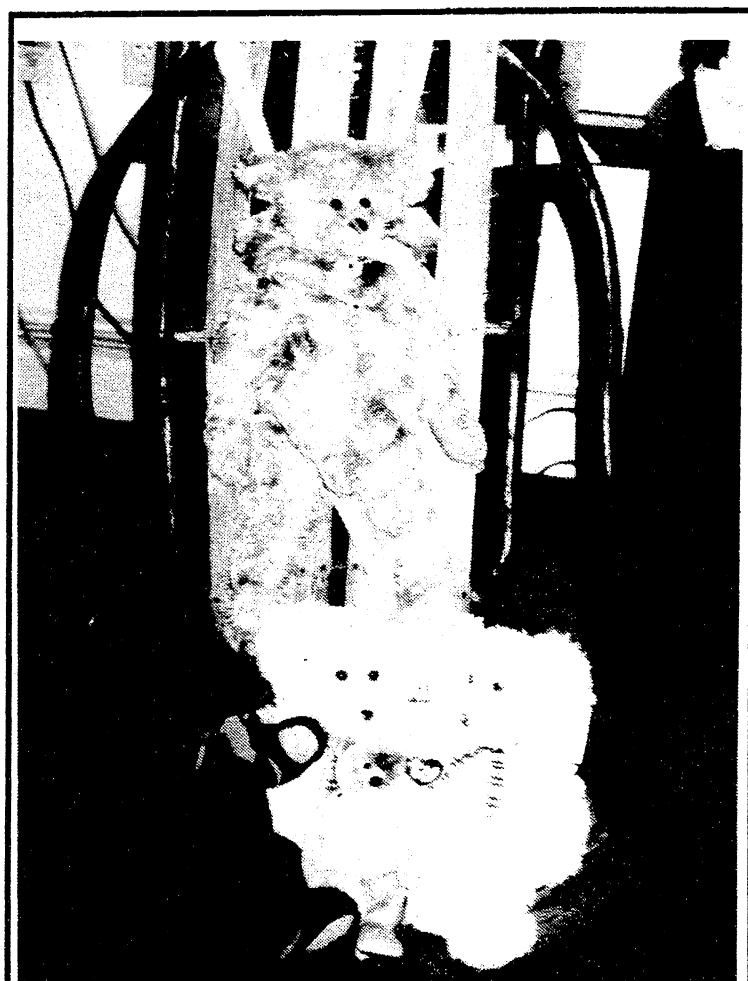
Teddy Bears are very low maintenance. No doctor bills, no tuition, no car or house payments either.

If these reasons have not convinced you to open your home to a Teddy Bear, maybe this last one will do it. At the end of a long hard day a Teddy Bear will always be there to greet you with a Smile. He will not ask why are you late? nor how much money did you spend? nor what's for dinner? It will just be glad you are home.

Plenty of deserving teddy bears are just waiting to be brought home to someone this time of year. Look around town and you'll see them in many shops. Your Teddy Bear is out there somewhere; it will probably be wearing a big bow and a big smile and nothing else. - you'll recognize it when it twinkles at you.



The large Pink and White Teddy Bear is from the early 60's.
The little blue musical bear is the late 80's.



More of Nancy's collection. Her handmade Teddy Bear purse.
A special black bear, her white twins, and of course a Ty Garcia beanie baby.

MANCHESTER

Market

Prices good thru December 14, 1997 455 W. Main

Gold Medal Flour
5lb. 79¢

PEPSI
2 liters
99¢ +dep

Sunkist
Navel Oranges
\$1.58
4 lb. bag

Mon - Sat 8 am to 9 pm Sunday 9 am to 7pm

CALAMITY JANE'S

**HOLIDAY
BANNERS
including
3 dimensional
Windsculpt!**
We also have
poles and
brackets -
Makes a
great gift

**Great
Ornaments
and
Decorations**



**Deck yourself
with Christmas
Jewelry
1/2 Off
All
Christmas
Jewelry*
Now thru
Dec. 16th**

* excluding specialty priced jewelry

**BEANIE
BABIES**



**Have a POOH
Christmas!**

**Christmas
Cards
Stickers
Ornaments
Wrapping
Paper
PooH Beanie
Books, Plush,
& more**

109 E. Main St. ★ Mon - Sat 10 - 5, Thurs 10 - 8 pm Sun 12 - 5 ★ 428-1122

ADRIAN CINEMA 10

3150 N. Adrian Hwy
24 Hour Movie Line 517-265-3055

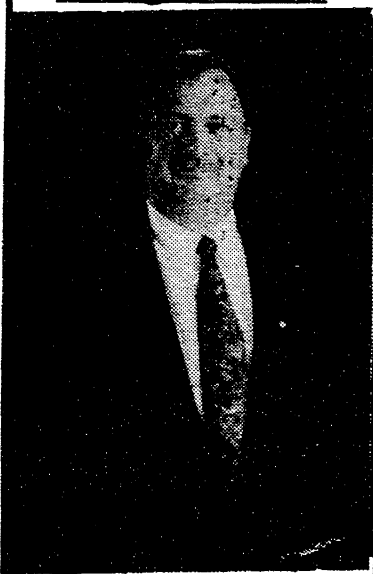
COME & SEE OUR NEW LOOK!

4 New Auditoriums featuring
stadium Seating, Curved Screens,
Digital Sound, & New Seats with
extra leg room, remodeled lobby
Gift Books & VIP Books Available
Daily Mats. 'til 6 PM \$3.75

Week of Dec 13 - Dec 18

- Rainmaker (PG13)
Daily 4:10,7:00,9:50
Sat & Sun 1:00, 4:10,7:00,9:50
- Anastasia(G)
Daily 4:20,6:50,9:00
Sat&Sun 12:15,2:15,4:20,6:50,9:00
- For Richer or Poorer (PG13)
Daily 4:50,7:30,9:55
Sat&Sun 11:45,2:20,4:50,7:30,9:55
- I Know What You Did Last
Summer (R)
Fri-Thurs 7:40,9:40
- Mortal Kombat 2 (PG13)
Daily 4:45
Sat & Sun 12:45,2:45,4:45
- The Jackal (R)
Daily 4:30,7:20,10:00
Sat&Sun 1:15,4:30,7:20,10:00
- Disney's Flubber (PG)
Daily 4:50,7:15,9:20 Sat&Sun
12:30,2:45,4:50,7:15,9:20
- Alien Resurrection(R)
Daily 4:40,7:10,9:45
Sat&Sun 2:15,4:40,7:10,9:45
- Home Alone 3 (PG)
Daily 5:10,7:20,9:40
Sat&Sun 12:20,2:40,5:10,7:20,9:40
- Scream 2 (R)
Daily 4:00,5:00,7:00,7:30,9:30,
10:00(11:50pm Fri&Sat Only)
Sat&Sun
12:00,1:00,2:30,4:00,5:00,7:00,7:30,
9:30,10:00

Buying or Selling a Home?



- 30 years sales experience
- Including 16 years in
retail banking sales
- B.B.A. in Marketing
- Affiliated with top broker
in Washtenaw County

Mark VanBogelen

(313)-428-0738
(313)-677-4300

**THE
ANDERSON ASSOCIATES
REALTORS**

2160 Huron Parkway
Ann Arbor, MI 48104



2.9%

A.P.R.

BIG TIME Savings!

ON THESE VEHICLES
OR UP TO \$2000 CASH BACK!

\$1000 CASH BACK



CAMARO

\$750 CASH BACK



LUMINA

\$2000 CASH BACK



CAVALIER
CONVERTIBLE

\$750 CASH BACK



MONTE CARLO

\$1000 CASH BACK



S-10

\$2000 CASH BACK



TRACKER

\$1500 CASH BACK



ASTRO

\$1000 CASH BACK



BLAZER

2.9%



VENTURE

\$1000 CASH BACK



FULL-SIZE
CONVERSION
VAN

Visit Your Great 8



Chevy Dealers Today!

ANN ARBOR
Rampy Chevrolet
3515 Jackson Road
313/663.3321

CHELSEA
Faist-Morrow Chevrolet
1500 South Main St.
313/475.8664

CLINTON
Underwood Chevrolet
1070 West US 12
517/456.4181

DEXTER
Frank Grohs Chevrolet
7120 Dexter - Ann Arbor Rd.
313/426.4677

HOWELL
Champion Chevrolet
5000 E. Grand River
517/545.8800

MANCHESTER
Tirb Chevrolet
131 Adrian Street
313/428.8492

SALINE
Bill Crispin Chevrolet
7112 E. Michigan Ave.
313/429.9481

YPSILANTI
University Chevrolet
1180 E. Michigan Ave.
313/481.0210



\$2000 cash back on '98
Cavalier convertible. As an
alternative to cash-back offers,
GMAC*-approved 2.9%/48-
month or 3.9%/60-month APR
financing available on selected
vehicles. All Cavalier Models
\$750 Cash Back, excluding
Cavalier Convertible. Offer
ends January 5, 1998. For
complete details, see your
participating Chevrolet* dealer.



MANCHESTER AREA SENIOR CITIZENS NEWS

- by T.V. Ludwick

What a joy to hear the Daisy Scouts singing merrily on the front porch! Then comes the pleasure of watching the exuberance of these thoughtful youngsters...thank you all.

How did you do on last week's 'So You Think You're Smart, Huh?' With 3 Fs you are average; 4 Fs, above average; 5 Fs turn your nose up at most anyone; 6 Fs, YOU'RE A GENIUS. Most forget the "F's" in "OF's" Your brain sees them as "V's". If you caught only three F's, you have a lot of company (like me).

Thursday, December 11: Once again Jan and crew cook up something good known as Chef's Choice. If it's as good as that Italian Something, goodie! Come join us at Emanuel UCC Fellowship Hall at noon each Tuesday and Thursday noon for these delicious and nutritious meals for folks 55 or older. Just call in reservations to Sharman ahead of the meal at 428-8359, or you may call Jan at 428-7630 before 10:30 the day of the meal. Have fun, too, and enjoy bingo afterwards.

Friday, December 12: Bus pickup begins at 9:45 for the Senior Citizens Klager School Christmas Program and Dinner. This yearly event is special to both 1st through 4th graders, their teachers and parents and most of all seniors whom they delight. Call Marion to ride the bus and get your reservations to

the school otherwise. Pickup begins at 6 PM for those of you who going to the Saline Senior Citizens Card Party...call Marion to go.

Monday, December 15: Last chance to finish your Christmas shopping by going along to Jackson shopping. Call Marion for your ride.

Tuesday, December 16: Today's clergy presentation will be given by Rev. Beird and begins at 11:15. Our pastors do a great job, come listen. Then, we'll all enjoy baked fish (this will hopefully help my brain this busy time of the year).

Wednesday, December 17: This year, it was decided to have the Christmas tour of Manchester before the holiday and today is the date. Pickup starts at 4:30 when the group will go eat before you begin oh-ing and ah-ing all those pretty sights around town. Call Marion to go.

Thursday, December 18: Our Jan, Kathy and Company will present a Christmas Dinner for our pleasure today as the final meal for 1997. We wish you all a very Merry Christmas & a Happy New Year as we probably won't be in the paper next week! We will be working on the January/February Trumpeter while on vacation from this column, more later.

For all you Capricorns (December 22-January 19): "Your great talents must rise to the surface, as you will be meeting influential persons."

Happy Birthday, Seniors!



These Senior Citizens celebrated their December birthdays last week at the Senior Luncheon: TV Ludwick, Jeannette Frinkel, and Marion Ahrens. Absent from the picture is Pastor Vince Carroll, who officially became a Senior Citizen as of December 3. "Welcome to the Club!"



HOME IS WHERE THE HEART IS

May yours be filled with peace, love and contentment for this holiday season.

Brooklyn Living Center

151 Constitution Ave., Brooklyn, Michigan

(517) 592-2828

Ganton Retirement Centers Inc.

"The Finest in Retirement Living"

FUND RAISING

Manchester Sportsmans Club
8501 Grossman Rd.
Friday, 6:45 p.m.

Manchester American Legion
203 South Adrian
Sunday, 5:00 p.m.

SUPPORT YOUR
LOCAL NEWSPAPER
The
Manchester Enterprise
(313) 428-8173

TREE OF LIGHTS

Sponsored by Samaritan Counseling Service.

A minimum \$3 donation will add a light to honor or memorialize your loved one.

For more information contact Samaritan Counseling at 663-6671. Registration forms available at: Local Banks, Churches, Baker's Dozen, and Kleinschmidt's.

A card is sent to remembrance person and name read at ceremony. The tree shines thru Epiphany 1/6/98



Come join in the lighting ceremony
Sun. Dec. 14th at 5:30 pm beginning
at the Emanuel Church Sanctuary with
lighting following ceremony.

Sula Darlene Jeffers

ATTORNEY AT LAW
150 E. Main Street
P.O. Box 625
MANCHESTER, MI 48158

(313)-428-8190

Hillside Tree Farm

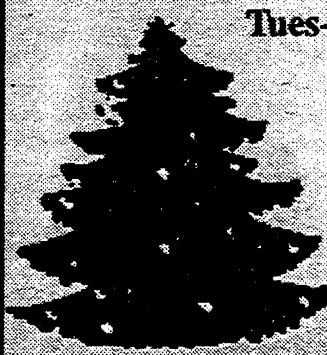
4714 U.S. 12, Tipton

4 miles west of M-52 • (517) 456-7233

Tues-Thurs 3:30-5 Fri. 12-5,
Sat. & Sun. 10-5

Wagon Rides, Tot tree lot,
play area, Warming barn
with food, beverages,
fireplace, crafts.

Scotch Pine & Spruce,
Cut your own \$8-29
Other Varieties Pre-cut



Deborah Engelbert

Real Estate Sales Associate
The Charles Reinhart Co.



30 Million In Sales !
Office: 313-971-6070
Direct: 313-669-5897
Res: 313-475-8303
Fax: 313-747-7880
2452 East Stadium Blvd.
Ann Arbor, MI 48104

Reinhart

Lordy, Lordy....



**Look Who's Forty!
Happy Birthday!!!**

Beanie Babies and Pillow Pals are IN!

Calamity Jane's 109 E. Main

★ Mon - Sat 10-5 Thurs 'til 8pm Sun 12 - 5 ★

Thinking about selling your home
without Realtor assistance?

We can help you save
thousands of dollars.

For valuable
recorded information
on how to sell your home by owner,
call the Legacy Residential Funding
hotline.

1-800-224-0827 Box 2012



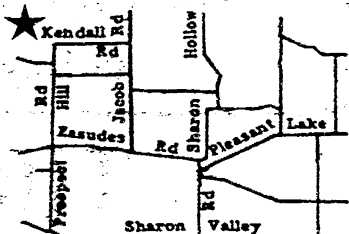
Peggy Wilson
President
(313) 428-7446

Christine Deacons
Vice President
(313) 428-1448

Frey's Tree Farm

15356 Kendall Rd. 428-1425
Acres & Acres to choose from
Bring a Saw- ours may be busy!

Frasier Fir \$22
Douglas Fir \$22
Black Hills \$22
Blue Spruce \$22



Open Daily After Thanksgiving

\$2 Off with This Coupon!

Hospice Supports Local Family



This year Ray and Ava Goff will hang a heart ornament on the Arbor Hospice Tree of Remembrance for their 32-year-old son David, who died three years ago. It's a special tribute to him, and a way of remembering him during the holidays.

Shortly after David's death, the Goffs got involved in a grief support group, sponsored by Arbor Hospice.

I know that the primary job of Hospice is caring for the terminally ill," says Ava Goff, but it certainly helps to have this support group.

David Goff, who lived in a different part of the state than his parents, was under the care of another hospice

when he died. Through them, his parents found out about the grief support group closer to their home.

"You're with people who are going through the same thing and they understand you just don't get over this in a week or a month or a year," says Ava Goff.

"I think the people in the group can relate to your feelings," says Ray Goff. "They experience the same things you're feeling. I think it's a tremendous help to attend a support group."

This is the second year that the Goffs have purchased an ornament in memory of David, who was an active Seaman First Class in the

Navy before he became ill.

Over 3000 volunteer hours have gone into making the ornaments this year. They can be purchased for a donation of any amount, and all proceeds go towards providing Arbor Hospice patient care programs. Each year the ornament is handcrafted in a different design, and bears the name of your loved one.

There will be a special dedication service for the Washtenaw County Tree of Remembrance at 2 PM on Sunday, December 21 at Workbench Furniture in the Kerrytown Shops, 405 N. Fifth Ave., Ann Arbor. Everyone is invited to share their memories and celebrate the holidays.

"We appreciate everything that hospice has done for our family," says Ava Goff. "They certainly are very dedicated people and we are grateful for the help that we and David received."

Now, Arbor Hospice is offering something more. A hospice residence will open in January for terminally ill patients who can no longer remain at home. It's a place where patients can die with dignity and comfort in a home-like setting, while under the care of an experienced hospice staff. Their family can stay with the patient, assist in their care, and even bring pets from home to visit.

For more information on the heart ornaments or for a guided tour of the new Arbor Hospice residence, call (313) 677-0500.

Wacker's General Store

**Holiday
Fruit & Gift Baskets
made to Order
Many Baskets to
choose from
or bring in your own.
We'll fill it to your
specifications!**

Place your orders from
now till Dec 24th!

Corner of M-52 & Pleasant Lake Roads, Manchester
Call 428-8366 or 1-800-535-5949

Lots of Goodies to choose from!
Smoked Fish
Nuts
Candy Wines/Liquor
Fruits
Cheese
Meats
Homemade Breads
Fresh Baked Cookies & Bagels

School lunch menu

Monday, December 15:
Taco Bell burrito, tator tots, carrot sticks, applesauce.

Tuesday, December 16:
Chicken Nuggets, Crispy fries, dinner roll, fruit.

Wednesday, December 17:
Hot turkey sandwich with mashed potatoes, gravy, green beans, jello.

Thursday, December 18:
Nachos Supreme, corn, ice juicee.

Friday, December 19:
Ollie's pizza, salad, juice, holiday cookie and a treat!

Save Those Labels!

The Middle School Campbell soup label drive is under way. We will be collecting soup labels until March 1, 1998. Please help with our collection by saving all your Campbell's product labels and dropping them off at our local Manchester Market or by sending them to the Middle School in care of Chris Honer.

We will have a contest in fifth grade and sixth grade for which the classroom winners in each grade will make a trip to the Dairy Queen. We hope to collect **40,000** labels this year which we will exchange for books on informational reading.

Thank you very much for your support.

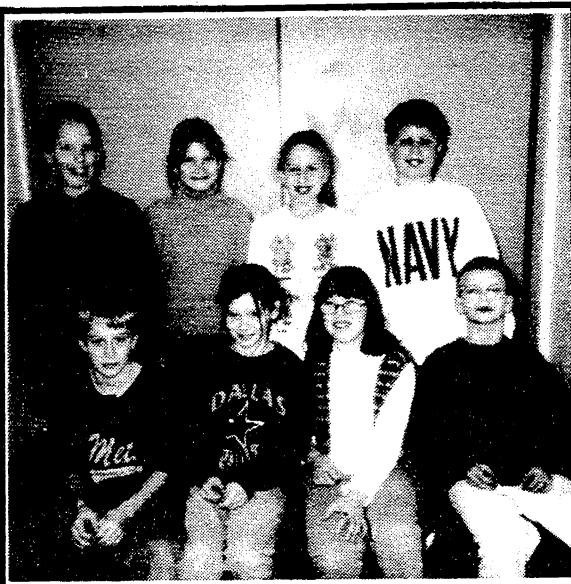
Manchester Middle School

We are recognizing:

- Effort • Behavior
- Achievement

Congratulations to these students!

Middle School Students of the Day (week of November 24-26 and December 1-5)



Fifth Grade: Ashley Kissman, Samantha Mahan, Brian Meadows, James Murray, Rodney Posky, Mark Trinkle, Megan Spring, Amanda Scott



Sixth Grade: Sarah Henderson, Abby LaRock, Lianne Maly, Jeff Miller, Abby Preuninger, Rosie Sondeen, Alan Scharpenberg, Ryan Thomas



Seventh Grade: Josh Reeter, Kristine Smith, Daisha DeLawter, Jessica Kozar, Kevin Walter, Dale Becker, Briana Clark



Eighth Grade: Amber Krutsch, Michelle Smail, Rachelle Lillienthal (absent), Kristi Trinkle, Ryan Maggetti, Katie Page, Casey Preuninger

MHS Quiz Bowl Begins Season

The 1997-98 Varsity and J.V. Quiz Bowl teams competed for the first time on Wednesday, December 3. The Manchester teams went up against Milan, and our opposition proved to be tough.

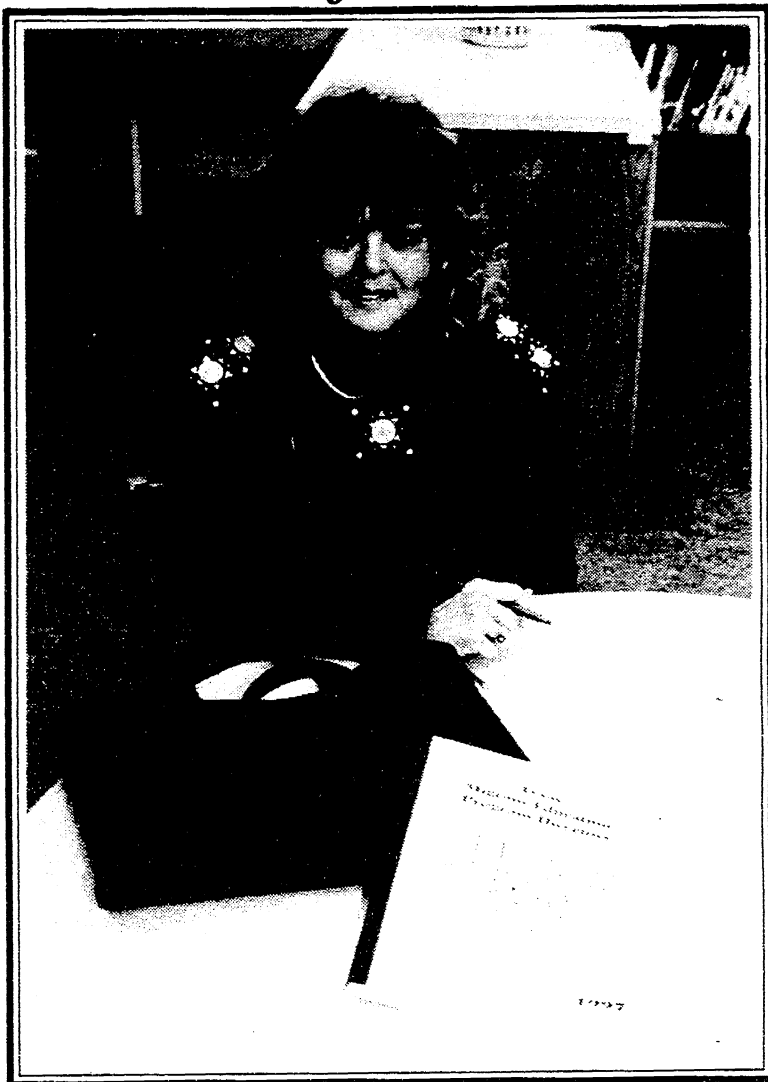
The competition was held in the MHS Media Center and though the Dutch worked their hardest, Milan soon moved ahead and remained in the lead for the remainder of the match. Manchester fought until the end, however, scoring a fair portion of their points in the last minutes of the match. The disappointing final score was Milan, 470; Manchester 130.

The J.V. also had a tough game, and through a small struggle, ended their match in a tie of 70-70. The Manchester Quiz Bowl Team will play their next game on Wednesday, the 10th at Whitmore Lake.

- Alyssa Chartrand

School

MEA Honors Manchester School Secretary at IPD conference



The Michigan Education Association will honor the achievements and dedication of a school secretary from Manchester at an award ceremony on December 4, 1997.

Helen Nickerson, secretary at Klager Elementary School in the Manchester Community Schools, will receive the 1997 Migrant Education Award, for her work with migrant students and their families.

Nickerson has been a secretary for the Manchester Community Schools for fifteen years. Her experience in migrant education is extensive. She has been specialist for the Migrant Education DataBase System, recruiter, secretary for summer and fall migrant education programs and advocate for migrant students and their families.

The Migrant Education Award was established to recognize an MEA member for contributions to migrant education, particularly in ensuring equal educational opportunity for migrant students.

Nickerson and five other MEA members will be recognized during the MEA Instruction and Professional Development Conference, December 4-6 at the Hyatt Regency in Dearborn.



Don't get disturbed...See Tirb!

For New or Used Cars
See Charlie Dermyre
or Ray Tirb

TIRB

Chevrolet & Geo

Phone: (313) 428-8212 or (313) 428-8492
131 Adrian Street - Manchester, Michigan

Sports

Fall Sports Summary

Manchester High School held their fall sports recognition night on Tuesday, November 25. Honoring the Varsity and JV Football, Cheerleading, Golf, Girls' Basketball, Cross Country and Equestrian Teams, the Fall Sports Recognition Agenda included the announcement of Scholar Athlete Awards, the Cascade Conference Academic Team, and Cascade All-Conference Selection Awards.

Varsity football players honored at the Recognition night included *Terry Coleman*, Honorable Mention Ann Arbor News, and Cascade All Conference Kicker; *Nick Davis*, a scholar/athlete, team captain, Associated Press First Team All State, Ann Arbor News' First Team All-Region, Jackson Citizen Patriot Dream Team, and Cascade All Conference RB/DB; *Jim Hall*, scholar/athlete, Ann Arbor News Honorable Mention, Cascade All Conference, and Honorable Mention DL; *Jon Hochstetler*, a scholar/athlete and Cascade All Conference Honorable Mention; *Tim Hough*, scholar/athlete; *Andy Hughes*, scholar/athlete; *Chris Kemner*, Ann Arbor News' Second Team, Cascade All Conference Honorable Mention; *Lee Kothe*, scholar/athlete; *Matt Laskowski*, scholar/athlete, Cascade All Conference Honorable Mention; *Mike Meranuck*, scholar/athlete; *Shane Neige-bauer*, Ann Arbor News' Honorable Mention, Cascade All Conference Honorable Mention; *Nick Niehaus*, scholar/athlete, named to First Team All Region by the Ann Arbor News and Cascade All Conference Honorable Mention; *Nick Rose*, Ann Arbor News Honorable Mention; *Justin Turk*, 4.0 average scholar/athlete, Captain; *Eric VanBogelen*, Captain, First Team All Region by the Ann Arbor News, and Cascade All Conference.

The Varsity Football Team had an overall 7-2 Record and a Conference record of 6-1, good for Second Place in the League.

Junior Varsity Football scholar athletes were *Mike Boehmer*, *Pat DuRussel* (Captain), *Jason Flint* (Captain), *Mark Hollosy*, *Matt Jones*, *Jon Miller*, *Joe Shurtliff*, *Derrick Smith*, and *Jeremiah Tobias* (Captain).

The JV Football team had an excellent 7-1 record for their season, losing only to a tough Addison team.

Varsity Girls' Basketball presented the following honors: *Mary Barrett* - Scholar/athlete, Cascade All Conference Honorable Mention; *Jennette Branch*, scholar/athlete, Cascade All Conference Honorable Mention; *Amy Gall*, Scholar/Athlete, Cascade All Conference Honorable Mention; *Lindsay Hosmer*, Scholar/athlete, *Marilyn Maher*, scholar/athlete; *Julie Porter*, scholar/athlete and Cascade All Conference Team; and *Abra Wise*, scholar/athlete. The Varsity Girls' Bas-

ketball team had an overall 12-9 record, and a third place finish in the Cascades Conference.

JV Girls Basketball Scholar/Athletes were: *Brandy Aiken*, *Shannon Green*, *Meggie Hartley*, *Jennifer Heskett*, *Amber Hoeft*, *Holly Horodeczny*, *Kathryn Horodeczny*, *Tristan Kladzyk*, *Laura Meyer*, *Emily Parr*, *Amy Preston*, *Stephanie Schleicher*, *Ashleigh Sewell*, *Mindy Weir* and *Erin Wiley*, who received a 4.0 average. Fifteen of the sixteen team members qualified as scholar athletes with a 3.0 grade point average. Their excellent overall record of 15-5, gave them a first-place finish in the Conference and sets our Girls Basketball teams to be a powerhouse in next year's competition.

Fall Varsity Cheerleaders who received honors included *Chrissy Abbott*, scholar/athlete; *Lisa DuRussel*, 4.0 Scholar/Athlete, Captain, and Cascade All Conference; *Stacey Heldt*, scholar/athlete; *Annie Hinkley*, 4.0 scholar/athlete; *Sarah McGuire*, scholar/athlete; *Alexis Punches*, scholar/athlete, Cascade All Conference Honorable Mention; *Katie Roberts*, Scholar/Athlete; *Michelle Roos*, Scholar/athlete; and *Katie Sondeen*, 4.0 scholar/athlete.

Junior Varsity Cheerleaders had a 100% scholar/athlete team, including *Amanda Coutts*, *Amber Cullip*, *Joanne Eversole* (Captain), *Rachel Landry*, *Elizabeth O'Dell*, and *Holly Sutton*.

The Manchester Cross Country Team had a successful season, with both the Boys' and Girls' teams having a dual meet record of 6-1. The Girls' team also placed first in the Regional Meet. Recognition was given to *Eli Bragg*, scholar/athlete and All Region/State Qualifier; *Kyle Harris*, 4.0 scholar/athlete, Cascade All Conference Honorable Mention; and All Region/State Qualifier; *Phillip Krall*, scholar/athlete; *Kevin Sahakian*, 4.0 scholar/athlete and All Region/State Qualifier; and *Jeremy Smith*, Cascade All Conference Honorable Mention; *Lauren Adler*, 4.0 scholar/athlete and State Qualifier; *Cassie Clark*, Cascade All Conference Honorable Mention and State Qualifier; *Rachel Fleck*, scholar/athlete, Cascade All Conference, and All Region/State Qualifier; *Erin Fox*, scholar/athlete, Cascade All Conference Honorable Mention, and All Region/State Qualifier; *Jackie Palms*, 4.0 scholar athlete, Cascade All Conference, All Region/State Qualifier; and *Kristen Taddonio*, scholar/athlete and State Qualifier.

The MHS Golf Team finished their season in sixth place among the Cascade Conference. Honored at the Sports Recognition night were Captain *Ben Grenier*, scholar/athlete and Ann Arbor News All Area Golf Second Team; *Derek Hanselman*,

scholar/athlete; *Will Slocum*, scholar/athlete; and *Anthony Smith*, scholar/athlete.

The highly successful Equestrian Team completed their season as District 7 Class A Champions and were fourth in the State Championships. Scholar Athletes on the Equestrian Team included *Erin Braddock*, *Lisa Burmeister*, Captain *Leanne Ellsworth*, *Rachel Jefferson*, *Sarah Jefferson*, *Lindsay Kloster*, and co-captain *Kelly Parr*.

The Cascades All Conference Academic Awards to Seniors with a cumulative Grade Point Average of 3.0 and above, went to *Erin Braddock*, *Lisa DuRussel*, *Leanne Ellsworth*, *Chris Kemner*, *Lindsay Kloster*, *Matt Laskowski*, *Mike Meranuck*, *Shane Neigebauer*, *Kelly Parr*, *Ben Pietrowski*, *Katie Roberts*, *Michelle Roos*, *Jeremy Smith* and *Justin Turk*.

Athletic Director Mr. John Easley, summarized the fall sports season noting that 58% (79 out of 135) fall athletes maintained over a 3.0 GPA; and the combined GPA of all the fall sports teams was a 3.15. "We had 26 Cascade/MHSAA State Athletic Selections," he concluded. All in all, a season of which we can be proud.

Congratulations to all of our fall athletes!

Varsity Jackets Now in Stock



475-1900
BEST PRICES

OPEN 7 DAYS
120 W. Middle St.
Downtown Chelsea

Gifts for: Her Him Kids

Jewelry
Bath & Body
Candles
Banners
Note Cards
Santas
Winnie the Pooh
Photo Frames
Framed Prints
Nightshirts
Sweatshirts
Wall Accessories
Hand Cream
Wind Chimes
Scrapbooking
Trinket Boxes

Bird Seed Cookies
Stress Balls
Sweatshirts
Fishing Ornaments
Golfing Goodies
Hunting items
Framed Prints
Trains, Planes, Cars,
& Tractors
Pens & Note pads
Key Chains
Pewter Crosses
Signs
Photo Frames
Banners
Wind Chimes

Beanie Babies
Stuffed Animals
Puzzles
Toys Galore
Waistbags
Jewelry
Diaries
Journals
Mickey Moose
Winnie the Pooh
Hello Kitty
Keroppi
Pillow Pals
Stickers
BathBeads
Bath Gel

Stocking Stuffers for Everyone too!
**Why fight the crowds when you
can shop right here in town?**

CALAMITY JANE'S

109 E. Main ★ 428-1122

Mon - Sat 10 - 5 Thurs 'til 8pm Sun 12 - 5

Automotive Technology Classes Receive New Chevrolet Pickup



Tirb Chevrolet and Chevrolet Motor Division are donating a new 1997 Chevrolet Pickup to the Automotive Technology Center at the Saline Consortium, which is part of the South and West Washtenaw Consortium. Manchester, Chelsea, Dexter, Milan and Saline are the schools included in this consortium.

This program was started in 1972 when Chevrolet started diverting damaged cars and trucks to schools for training purposes. So far, over 11,000 new Chevrolet passenger cars and trucks damaged in transit have been donated to schools for in-classroom instructional purposes. The program also includes donations of passenger car and truck engines, transmissions, tools and various automotive components

used for testing or design development.

The pickup is to be used for training automotive technicians. It cannot be licensed, titled or driven on any road, public or private, nor can any component of a donated vehicle be used on or in a vehicle which will be used in that manner.

Pictured handing over the keys are **David J. Achino**, District Service Manager for Chevrolet Motor Division, and **Ray Tirb**. Accepting the truck for the consortium is **Timothy J. Timoszyk**, the Automotive Technology Director, and **Diane Skinner**, the Director of Career and Technical Education for the consortium.

The vehicle was transported to Saline courtesy of Manchester Collision.

- MJC

Futuring Steering Committee News

As a result of the October 2 meeting, "The Futuring of Manchester," a steering committee of fourteen volunteers was formed. **Jim Sprague** has been selected as Chairperson and **Pat Vaillencourt** the Recording Secretary.

The committee has finalized their Mission Statement, "We serve as a catalyst for cooperation between the Village, the Townships and the School District to preserve and enhance the Community of Manchester."

Their first task will be to do a comparison of the Village of Manchester and Manchester Township's Five Year General Development Plans against the results of the Futuring Meeting. The goal will be to identify any differences between the General Development Plans and the opinions voiced on October 2nd. The outcome of the comparison will be presented to the Planning Commissions.

The next meeting will be on December 18th at 7 00 PM in the High School Library. Everyone interested in learning more about our community and understanding the plans for our future growth is welcome.

Pat Vaillencourt

Beautification Committee Holiday Awards

The Manchester Beautification Committee is once again looking for beauty in the Manchester community! Nominations are being sought for the best Christmas decorations in town. The Committee will check out all potential nominees and will select the three best dressed holiday homes, both inside and outside the Village.

The "Choice Awards" will be announced after December 18, and the plaques will reside in the winners' yards during the Christmas Season.

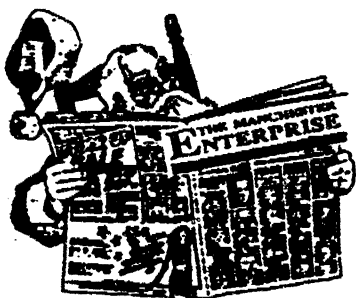
To nominate yourself, a neighbor, or a friend whose decorations you have admired, call Josie at A&J Travel, 428-8307, or Amy Griffin at 428-1853.

Be a Holiday Angel

The Chamber of Commerce needs donations for the Holiday Christmas Tree Lighting in Manchester. Light strings are wearing out and need to be replaced. Please help keep Manchester bright and beautiful for the holiday season. Donations should be made to the Manchester Area Chamber of Commerce and will be gratefully acknowledged.

Fill this form out, send a check along for \$18 in Washtenaw county \$20 for out of county or out of state and we will send a Gift Certificate to your recipient

Give
A Gift
Subscription
to
THE
MANCHESTER
ENTERPRISE
A Great
Holiday Gift



Name: _____

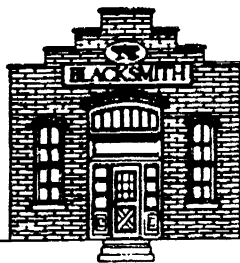
Address: _____

City, State, Zip: _____

This Gift Subscription is From: _____

Organizations

Manchester Area Historical Society



Manchester Historical Society Has Special Holiday Meeting

Bring your sweet tooth to the special holiday meeting of the Manchester Historical Society. All are welcome. The fun starts at 7:30 PM, Tuesday, December 16.

Join the group for some old fashioned holiday cheer at the celebrated Sharon House Bed and Breakfast on 8533 Sharon Hollow Road.

Come sing Christmas carols, have a taste of holiday punch and other goodies and take part in the Society's annual Christmas cookie exchange. Sampling is welcomed but save some for the folks to take home.

The wonderful setting of the Sharon House will add to the festive mood. Maybe there will even be a dusting of snow to add to the spirit of the night.

Don't forget the general membership meetings on the third Tuesday of the month in the historic John Schneider Blacksmith Shop, 324 E. Main Street, Manchester.



- Pre-Approvals
- Residential Home Loans
- Construction Loans
- Refinancing
- No-Cost Loans
- FHA/VA
- Self-Employed
- Evenings & Weekends



Kim Wolf

Phone (313) 475-6788
Fax (313) 475-9115
Pager (313) 691-9030

Sylvan Building
114 N. Main-Suite 1
Chelsea, MI 48118

Arend Tree Farms

Two Locations to choose from:

* Brooklyn: 2 mi. South on M-50 (517) 592-2006

* Chelsea: I-94 exit #156 west of Chelsea 475-7584

LARGEST TREE FARMS IN SOUTHEASTERN MICHIGAN

Specializing in Spruce & Douglas Fir

White & Scotch Pine also available Open Daily 9-5

Over 400 acres; 400,000 trees to choose from

Manchester Family Dentistry

James A. Watson

D.D.S.

428-9019

227 E. Main St., Manchester

Early Morning, Late Evening, Sat. appts.
Most Insurances Accepted

DANCE ARTS PERFORMING ENSEMBLE

Chelsea, Michigan

The Dance Arts Performing Ensemble is preparing for its third annual Christmas performance. On December 13 and 14, the Dance Arts Performing Ensemble will present Let It Snow, with original tap, modern, and ballet numbers, as well as selections from the final act of the Nutcracker. Most of the dancers in the Ensemble take lessons at Dance Arts of Chelsea. However, this year, the Ensemble invited dancers from other studios, such as Randazzo Dance Studio, Community School of Ballet, and Dance Gallery, to audition as well. Laura McCarthy, new co-owner of Dance Arts of Chelsea, has been appointed Artistic Director of the Dance Arts Performing Ensemble. The D.A.P.E. Board has recently received 501-C-3 non-profit status for the organization. Board members share responsibilities from paying bills and hiring choreographers to making costumes and booking performances. Choreographers for this year's Christmas show include Laura McCarthy, Wendi Alger-DuBois, and Elaine Economou.

McCarthy has been teaching ballet in Chelsea for the last two years and is also a member of the Cecchetti Council of America. She has 26 years of teaching experience. Her first studio was the Nashua School of Ballet in New Hampshire established in 1971. She has also worked at Ann Arbor Public Schools Recreation Department, the Randazzo Dance Studio in Ypsilanti, Ann Arbor Dance Theatre II, La Danse studio in Canton, and the Chelsea-Dexter Dance Arts Academy. She began dancing at the age of

eight. She has attended the Boston School of Ballet and the American Studio of Ballet. She is currently taking lessons from Marjorie Randazzo of the Randazzo Dance Studio. She has her Grade 5 Cecchetti certificate and is working on her Grade 6 certificate.

Wendi A. Alger-DuBois has a strong teaching background. She is currently instructing a writing course at Jackson Community College and is a teaching assistant at Michigan State University. She is also teaching ballet at the Grass Lake School of Dance and the Ann Arbor YMCA. From 1985 until 1990, she worked at the University of Michigan Dance Department and performed with Ann Arbor Dance Works. She was the director of the Youth Ballet Repertory Performing Company from 1983 until 1988. She has taught at Dance Theatre Studio, Dance Gallery Studio in Ann Arbor, Dance Alliance in Saline, Tecumseh Dance Workshop, Harbinger Dance Company in Detroit, and Rosemary Gregor School of Dance in Birmingham. She danced professionally with the Dayton Ballet Company of Dayton, Ohio. She earned a B.G.S. with History and English concentration from U-M in 1991. In 1995, she earned her M.A. in American Studies, with emphasis on women's studies, and has completed Ph.D. course work.

Elaine Economou moved to Chelsea two years ago. She is from eastern Massachusetts and lived in Chicago and New York before moving to Michigan. In New York, she studied modern dance and ballet with choreographers, Robin Becker and

Stormy Brandenberger. While in Chicago, she was a member of Add Water and Stir and also studied modern and ballet. She also danced with choreographers, Maggie Kist and Jane Skidmore-Harpole. Shifting Point Productions in New York and Chicago's Fourth Presbyterian Church both have presented her work. Since moving to Michigan, she has performed in a shared concert with Kelly Borcherts and has performed in many choreographers' showcases at Performance Network in Ann Arbor. Her favorite performance was an evening of dance, storytelling, and music at the Ark last January. She presented it as a part of the group, Creating Space, to benefit the Interfaith Council for Peace and Justice. They received an Annie Award nomination for this performance and were voted the best new Detroit dance company by the Metro Times last spring.

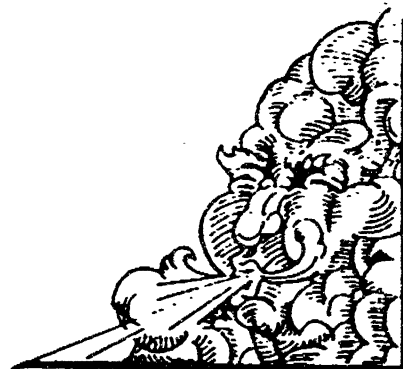
Several of the performers in the 1997 Christmas show are from Manchester. Korry Chavey, Ashley Collins, and Elizabeth Flahie are all apprentice members with the Ensemble. The apprentice members are age 12 and under. Company members from Manchester are Amanda Patridge, Ashley Farr, Karin Armour, Lindsay Jacob, and Anji Cooper.

The Nutcracker portion of the show will feature many performances by company members. There will also be a few performances by apprentices. It is going to be a great show! Hope to see some Manchester faces there!

- Anji Cooper, Dance Arts Performing Ensemble

DAN'S WESTSIDE AUTOMOTIVE

660 W. Main St.
428-9455

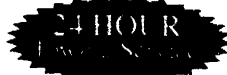


WINTERIZE SPECIAL - \$39.⁹⁵

Cooling System service includes up to 2 gallons of antifreeze.

Inspection includes: Battery, Belts & Hoses, Windshield Blades, Ignition system, Exhaust system and Tires

Mon - Fri 8:00 - 6:00 Sat 9:00 - 1:00
Free Pick up and Delivery Service



**Manchester
Community
Schools Board of
Education**

**Regular Meeting -
December 15, 1997 - 7:30 PM
Manchester High School
Media Center**

- I. Call to Order/Pledge of Allegiance
- II. Roll Call of Board Members
- III. Official Meeting Reports
 - A. Minutes of Regular Meeting - November 17, 1997
 - B. Minutes of Special Meeting - December 8, 1997
 - C. Treasurer's Report
- IV. Communication
 - A. Correspondence
 - B. Visitor Input
- V. New Business
 - A. Personnel
 - 1. Superintendent's Renewal Clause
 - B. Board Policy - Child Abuse or Neglect
 - C. Michigan Schools Energy Cooperative
 - D. Technology Plan
- VI. Discussion Items/ Reports
 - A. Fall Athletic Report
 - B. Summary - "Town Meeting"
- VII. Adjournment

Special accommodations for persons with handicapping conditions will be provided if such persons will contact the Manchester Community Schools, 313/428-9711, in advance of the meeting.

**THE TREE OF
LIGHTS**

Each year as you drive by the village gazebo and see the "tree of lights," you might wonder who places and decorates that lovely setting. Well, for the eighth year volunteers bring this lovely tree to our community on behalf of raising money for the Samaritan Counseling Center that offers assistance to those in Manchester who need and seek a religious based counseling program.

For a minimum contribution of \$3, you may purchase a light on the tree and memorialize a friend or loved one. A card will be sent to those remembered or their families. The tree lighting ceremony is set for Sunday December 14 at 5:30 PM in the Emanuel Church Sanctuary.

After a brief service we will proceed to the Gazebo and light the tree. We hope you can come join us for this annual event. If you wish to make a donation for a light please send your money/check made out to the Samaritan Counseling Center to Emanuel Church, Box 415, Manchester, MI. 48158. If you have any questions please call 428-8359.

- Contributed by Pastor Vince Carroll

**Family Holiday
Concerts
Scheduled**

The Ann Arbor School for the Performing Arts presents their Family Holiday Concerts, this Saturday, December 13, at the Michigan Theater in Ann Arbor.

From noon to 1:00 PM the Michigan Children of SCORE (String, Choral, Orff, Recorder Ensemble), directed by Lynne Tobin and Janet Mattke, and the Junior String Orchestra, directed by

Lynne Tobin, will present their concert.

From 2:00-3:00 PM, Tobin's Intermediate String Orchestra and the Youth String Orchestra (directed by E. Daniel Long), will present their performance.

A donation of \$5 per person or \$10 per family is suggested. For more information, call the AASPA office at 995-4625.

Food Gatherers
*sponsored by Manchester
Family Services for
Manchester area residents*

**Wednesday,
December 17, 1997
12:30-2:30 PM
St. Mary Parish Hall
on Madison St.**

**December Bed & Breakfast
Tour**

Sharon House Bed and Breakfast, will hold an open house and breakfast for all Chamber of Commerce members on Wednesday, December 17th at 9 00 am.

Carl and Sharon Curtis opened the bed and breakfast over a year ago in a stately Queen Anne home just west of town. Many will remember it as the old Heimerdinger house, or the Nollar dairy farm. Within the 18-room farm house, two bedrooms are available for guests, who are also encouraged to utilize other rooms in the home. There's lots to look at and enjoy. All rooms are furnished with an eclectic mix of antiques and whimsical collectibles and you won't want to miss Carl's impressive collection of old cameras.

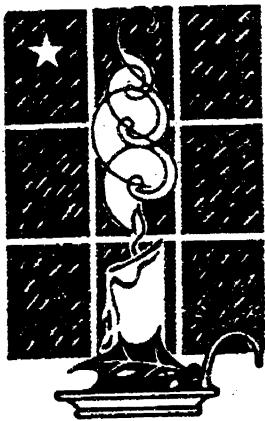
The Curtises have also been working on landscaping their grounds. Several gardens have been planted, including a large formal perennial garden which will ultimately lead to a gazebo and more gardens in the near future.

The Curtises hope to attract traveling business people as well as friends and relatives of local residents who need a place to stay. They also hope that others will consider it a great place for a weekend getaway.

Sharon House Bed & Breakfast is located at 8533 Sharon Hollow Road. There will be no charge for this event and non-members as well as members are welcome. A reservation is not needed, but would be appreciated, to Sharon Curtis, 428-0268.

1997 Christmas Eve Luminaria

sponsored by the Manchester Area Historical Society



*Get your supplies at the Blacksmith
Shop on East Main St.*

**Sunday, December 21st
Monday, December 22nd
Tuesday, December 23rd**

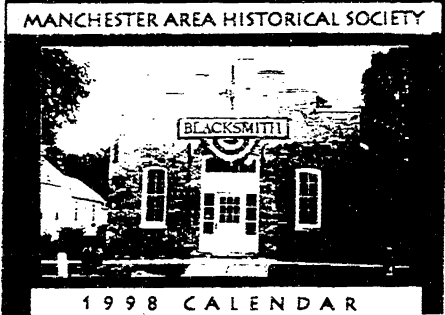
3 PM to 8 PM

**Sand, Candles, Bags and Instructions all included
for \$5.00 and up per household**

for additional information, call Forest Walz 428-8234

**1998 Manchester Area Historical Society Calendars will be available for
purchase at the Blacksmith Shop during these same hours.
They make a Great Christmas Gift at only \$5.00**

**MANCHESTER
AREA
HISTORICAL
SOCIETY**



1998 CALENDAR

1998 Calendars are now available!

*The Historical Society would like to thank the local
businesses who carry our calendars:*

- | | |
|---------------------------|--------------------------------|
| • Manchester Village Hall | • Sharon House Bed & Breakfast |
| • Flower Garden | • Woodbrook Computers |
| • Manchester Pharmacy | • Wackers General Store |
| • Manchester Enterprise | • First of America Bank |
| • The 18th Century Shoppe | • Kleinschmidt True Value |
| • Comerica Bank | • Manchester Township Library |
| • Carol's Cut & Curl | • Pyramid Office Supply |
| • Sharon Mills Winery | • Manchester Chronicle |
| • Manchester Antique Mall | • Raisin Valley Antiques |
| • Marti's Salon | • Village Gifts |
| • Fredonia Grocery | |
| • Chapters & Verses | |

**Envelope Included - Makes an Ideal
Christmas Gift or Card for only \$5.00**

Classified

Services

Lost or Found a Pet? Call the Huron Valley Humane Society. 662-5585. tfn

Fidler Painting: Interior and Exterior. Free estimates. Senior citizen discount. Phone 428-1190 or 428-8506 tfn

Farmers' Sand and Gravel.
We deliver and spread driveways. 475-8850 tfn

Benedict Painting: Call Chuck for free estimates. 17 years experience - interior & exterior painting. 517-536-4812 tfn

Stump Grinding & Tree Removal; Wood Chipping - Free estimates. Insured.. **R & L Tree Service** 428-1675 Rich & Russ Lutton tfn

PREMIER CONTRACT-ING, Full service residential and light commercial builder. 428-9826. tfn

Retired Fireman, 30 years experience - plumbing, electrical repairs, drywall, painting, etc. Call Jerry 517-536-4344. TFN

Manchester Electric, Inc. Contracting & In-home service 428-8243. TFN

Quality House Cleaning weekly/biweekly. Tracie Palmer 428-0653. "The Cleaning Crew" 8/14, TFN

Painting & Drywall repair. Home repair, deck cleaning and painting. Serving Washtenaw County, Chelsea 433-1189. TFN

Autos

Seized cars from \$175. Porsches, Cadillacs, Chevys, BMWs, Corvettes. Also Jeeps, 4WDs, your area. Toll Free 1-800-218-9000, Ext. A-11792 for current listings. 1/1

'86 Suzuki 4-wheeler-very clean \$1200. '93 Yamaha Vmax-4 completely stock. Adult owned. \$4000. 428-9255. 12/11

Misc.

FREE CASH GRANTS! College. Scholarships. Business. Medical bills. Never repay. Toll Free 1-800-218-9000 ext. G-11792. 12/4

Volunteers needed to ring the Salvation Army bell at Busch's ValuLand, Clinton. Contact Jane Wahl, 517-456-4782. 12/11

Operating a business without advertising is like winking in the dark

You know what you are doing, but no one else does.

Help Wanted

Clark now hiring 2nd and 3rd shift and weekends. Benefits, vacation, flexible schedule, competitive pay. Apply in person, 100 E. Main. TFN

Moms: work while your kids are in school- Subway offers flexible hours to meet your schedule. Apply in person, 100 E. Main. TFN

Stu Evans Ford is looking for Auto Clean Up personnel. Plenty of work, excellent working conditions. Excellent benefits. Contact Pat Lyons at 428-8343 TFN

Stu Evans Ford is looking for Porters. Excellent working conditions, plenty of work, excellent benefits. Contact Pat Lyons at 428-8343 TFN

Stu Evans Ford is looking for Auto Technicians, experienced, preferably Ford. Plenty of work, excellent working conditions. Looking for diesel technicians and other work. Company demo and excellent benefits. Contact Pat Lyons at 428-8343 TFN

TEACHER AIDES: One full time and one part time. Probationary rate \$8.64 per hour with benefits. Applications available at Superintendent's office, Clinton Schools, 341 E. Michigan Ave., Clinton, MI, 49236. 12/18

CUSTODIANS: Two full time. Rate of pay \$9.62 per hour with benefits. Applications available at Superintendent's office, Clinton Schools, 341 E. Michigan Ave., Clinton, MI, 49236. 12/18

CUSTODIAL MAINTENANCE SUPERVISOR: Custodial and maintenance knowledge, supervision experience preferred. Salary \$28,000-\$40,000 with benefits. Work 52 weeks per year. Applications available at Superintendent's office, Clinton Schools, 341 E. Michigan Ave., Clinton, MI. 12/18

Childcare needed: Mature adult needed to care for 2 boys (3 years and 1 year) in my home three days a week; Monday, Wednesday, Friday, starting at 5:00 am. Weekend help needed too. Call for more info: 428-9462 after 6:00 pm. 12/18

Accounting Assistant: We are a quality book manufacturer seeking a motivated, individual for a busy office. Responsibilities of this day position include filing, typing and light accounting. Through our Employee Stock Ownership Plan, you will become a company owner and share in company profits. In addition, we offer an excellent benefits package including medical, dental, vision and life insurance, 401(k) savings plan, and tuition reimbursement. Please apply in person or send a resume to:

Braun-Brumfield, Inc. Human Resources Dept., 100 N. Staebler, P.O. Box 1203, Ann Arbor, MI, 48106. A smoke-free environment, EOE. 12/11

Day Shift 9:30 - 2:30 Pizza makers and Drivers needed. Monday - Friday. Great job for Moms. Apply in person at Ollie's Pizza 138 E. Main. TFN

Pizza Makers part time. Flexible hours apply in person Ollies Main Street Pizza. TFN

Help Wanted

If you are looking for:

*More money for the holidays
*A flexible schedule that will allow you to work around next semester's classes, school age children, outside business activities, or retirement opportunities

*On the job training that can turn a new skill into a career

*36 hours of work, 42 hours of pay. 48 hours of work, 56 hours of pay.

We could be the place YOU want to work.

We offer flexible scheduling, three and four day workweeks, competitive compensation and full benefit packages that include medical/dental/vision, tuition reimbursement, 401(k) saving plan and Employee Stock Ownership Programs for employees who decide to stay on with us.

Because we have a continuous operation we are able to offer:

Long and short term temporary, temp to regular full time, entry level, experienced, student part time and job sharing positions effective immediately. If you are experienced in the following fields or would like to receive training, call us today.

Positions include:

Prepress assistant and trainees, electronic prepress operators with Mac and/or PC experience, layout, Opti, press, camera, bindery, and maintenance mechanics.

Shift hours include: 7am-7pm and 7pm-7am, 3-4 days a week.

A day shift position is also available for a parts and inventory clerk to place orders and maintain reports. We are anxious to speak with anyone who would like to pursue book manufacturing as a career choice. Please fax resumes to 313-662-5449 or stop by for an application. 100 N. Staebler (off Jackson Road), Ann Arbor. EOE.

Homes For Sale

GOV'T FORECLOSED homes from pennies on \$1. Delinquent tax, repo's, REOs. Your area. Toll Free 1-800-218-9000, ext. H-11792 for current listings. 1/1

WONDERFUL Georgian style home in village of Manchester with five bedrooms, two full baths. Upgrades include: roof, kitchen, furnace, wiring. \$195,000. Barbara Gomes, 429-2200 days/ (517)458-7038 eves. **EDWARD SUROVELL REALTORS** 12/11

For Rent

Building on Main Street 428-8190. Office/Retail. TFN

Manchester--very large, extra nice one bedroom, no pets. \$530/month. 428-9570 tfn

Efficiency apartment for rent in Manchester. Includes utilities. Call 517-522-4064. 12/11

Clinton: Office space upstairs-on Main Street. Approximately 1000 sq. ft. Has kitchen, full bath. Newly remodeled. Could also be apartment. Call 517-522-4064. tfn

Child Care

Little Acorns Before and After School Care. Snow days. Martha Stoner, 428-9472. 12/11

Christmas Trees

Tefft Tree Farm--cut your own Scotch Pine, \$16.00. Douglas Fir, Blue Spruce also available. Open Saturday 8:00 am to dark. Weekdays 3:30 to dark. Closed Sunday. 8 miles west of Manchester. at 11711 Austin Road. 517-536-4164. 12/11

Prayer to St. Jude

St. Jude, may the Sacred Heart of Jesus be adored, glorified, loved, and preserved throughout the world now and forever. Sacred Heart of Jesus, pray for us. St. Jude, helper of the hopeless, pray for us. Amen. Say the prayer nine times a day. By the eighth day, your prayer will be answered. It has never been known to fail. Publication must be promised. JD

Wanted

Wanted crop land to lease Bristle Farms. 313-428-0214. tfn

Wanted: female housemate. Must love animals and country living. Non-smoking. 313-428-9896. 12/11

For Sale

Beautiful hand-quilted quilts, all sizes, colors and design. Have to see to appreciate. 428-9203. 12/18

Antiques

Manchester Antique Mall: 35 Dealers. Open 7 days 10-5. 116 E. Main. 428-9357. tfn

Thank You

I wish to thank my neighbors, friends, and relatives for their attendance and well wishes at my Surprise 80th Birthday Party on Sunday, November 23 at the Manchester Methodist Church Hall. Also, thank you for the many cards, phone calls and gifts I received.

A special thanks to Pastor Thom and my church family for their help. It was a joyful afternoon.

Floyd Mahrle

Thank you to the Manchester Market, and all the parents who donated their time to help make our pop can drive a success. It enabled our organization to get started, and your generosity was very much appreciated.

Sincerely,

Katherine Ray, President, Middle School Enrichment Organization.

Thank you to Chapters and Verses for bringing your book fair to the Middle School, and for sharing a very generous portion of the proceeds with our organization. The proceeds have enabled our organization to help provide an additional field trip for the 6th grade class. Thank you for all your hard work, and to all the parent volunteers that donated their time to help make the book fair a success.

Sincerely,

Katherine Ray, President, Middle School Enrichment Organization



THE CRAFT CLINIC of Chiropractic
"Experienced Quality Care
You can Feel Comfortable with"

- Convenient Hours Monday thru Saturday
- 24 Hour Emergency Service
- Most Insurances Accepted

Mark G. Craft, D.C.

Never A Fee for Consultation

(313) 428-1370

122 W. Main St. • Manchester

Entrance off Washington, across from Library

CLASSIFIED RATE:

\$4.00 for the first 20 words,
10¢ for each add'l word.

Thank You's & Memorials are \$5.00
for the first 50 words.

Ads must be prepaid

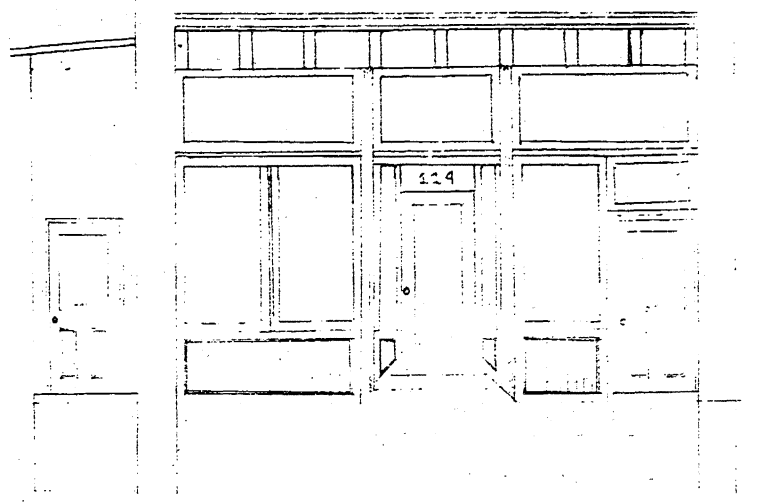
AD DEADLINE IS
5:00 Fridays

ADS accepted after the deadline will be published at a higher rate.



← Photo on left shows the demolition accomplished in a few short hours on the old L.V. Kirk building on Adrian Street.

Sketch on right is Ron's is a plan of the new front of the building upon completion. →



BUY BOTH YOUR AUTO AND HOMEOWNERS INSURANCE POLICIES FROM AUTO-OWNERS AND YOU WILL RECIVE A...

12% multi-policy discount

CONTACT OUR OFFICE AND LET US SHOW YOU HOW MUCH YOU CAN SAVE

SUTTON AGENCY, INC.
136 E. Main Street
Mon - Fri 9 to 5
(313) 428-9737

Asset Testing

is needed to start college

Asset Testing dates for Winter Semester at the Chelsea High School:

December 9, 17, 1997
January 7, 1998
6-8 p.m.

Registration and Advising dates:

December 16, 17, 18 and January 5 4-8 p.m.
December 19 11 a.m.-1 p.m.

Please call for an appointment
(313) 475-5935



Western Regional Center

Classes begin Jan. 7

Pleasant Lake Hardware & Services

11509 Pleasant Lake Rd.

428-8733



FRESH CUT CHRISTMAS TREES

Mon - Sat, 9 - 6
Sun, 11 - 3

Blue & White Spruce, Douglas Fir and Scotch Pine



James C. Schneider
Owner

Schneider J.C.S. Service

Sales & Rental Janitorial Equipment & Machines
Janitorial Service • Carpet Cleaning

428-1880 Business

P. O. Box 648
Manchester, MI 48158

PHOTOCOPIES

The
Manchester Enterprise
109 E. Main St.
(313) 428-8173

EMERY'S GREENHOUSE

Ready for the Holidays

Evergreen Wreaths, Garlands, Fresh Green arrangements, Planters, Grave Blankets
Poinsettias - over 12 different varieties

(including Whites, Reds, Pinks, & Variegated)

Christmas Trees: Scotch * Spruce

* Douglas Fir * Concolor Fir * Balsam Fir

* Canaan Fir * Fraser Fir



Emery's Greenhouse

4502 N. Adrian Hwy.

in Birdsall just north of Adrian

Monday - Saturday 9 - 5:30 except Tuesday we close at noon.

Sunday 10 - 4 'til Christmas • 517-263-2303

Faist-Morrow

the Place to Go for a New or Used Vehicle

"Where the QUALITY Used Cars Are"

1500 S. Main St.
Chelsea
475-8663



Cut your own
CHRISTMAS TREES

SCOTCH PINES \$16.00



Table Top to 9 ft. Shaker & Baler Available

Also - Wreaths, Door Swags and Centerpieces to decorate your home this Holiday Season

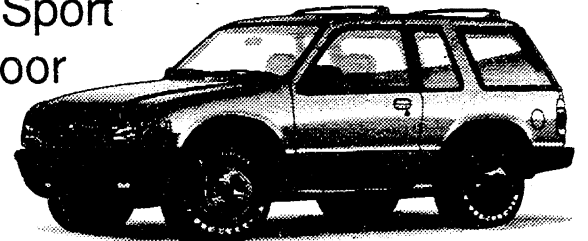
Pine View Farms
10998 Hardcastle Rd.
Brooklyn • 592-3892
9 - Dusk Tuesday - Sunday

STU EVANS



Retail Lease-24 Months	Red Carpet Lease Advance Payment Program	or purchase
\$29200*	24 Months \$658848*	
Monthly use tax.....\$17.53 Total monthly payment...\$309.55 Refundable security deposit...\$325.00 Customer cash down.....\$1000.00 Tax on rebate & down payment.. \$60 Customer pays at signing.....\$1694.55 Total of payments w/out Tax..\$7008.00 Total Mileage Allowed.....24,000 Mileage Penalty.....15¢/mile Closed End Lease	Monthly Use Tax.....\$395.28 Customer Pays.....\$6983.76 Due at Inception.....\$6983.76 Total Mileage Allowed..24,000 Mileage Penalty.....15¢/Mile Closed End Lease	List Price.....\$27,130 Stu Evans Discount.....-\$2992 your cost \$24,138*

98 Explorer
4 x 4 Sport
2 door



98 Ranger XLT

98 Escort ZX2

Retail Lease-24 Months	Red Carpet Lease Advance Payment Program	or purchase
\$15328*	24 Months \$410664*	
Monthly use tax.....\$9.20 Total monthly payment...\$162.48 Refundable security deposit...\$175.00 Customer cash down.....\$1000.00 Tax on rebate & down payment.. \$105 Customer pays at signing.....\$1442.48 Total of payments w/out Tax..\$3578.72 Total Mileage Allowed.....24,000 Mileage Penalty.....15¢/mile Closed End Lease	Monthly Use Tax.....\$12.14 Customer Pays.....\$4389.00 Total Mileage Allowed..24,000 Mileage Penalty.....15¢/Mile Closed End Lease	List Price.....\$14,415 Rebate.....-\$750 Stu Evans Discount..-\$1013 your cost \$12,652*

Retail Lease-24 Months	Red Carpet Lease Advance Payment Program	or purchase
\$19990*	24 Months \$525488*	
Monthly use tax.....\$11.99 Total monthly payment...\$211.89 Refundable security deposit...\$225.00 Customer cash down.....\$1000.00 Tax on rebate & down payment.. \$120 Customer pays at signing.....\$1556.89 Total of payments w/out Tax..\$4797.60 Total Mileage Allowed.....24,000 Mileage Penalty.....15¢/mile Closed End Lease	Monthly Use Tax.....\$15.94 Customer Pays.....\$5630.24 Total Mileage Allowed..24,000 Mileage Penalty.....15¢/Mile Closed End Lease	List Price.....\$14,695 Rebate.....-\$1,000 Stu Evans Discount.....-\$896 your cost \$12,999*

98 Windstar GL

98 Taurus LX

Retail Lease-24 Months	Red Carpet Lease Advance Payment Program	or purchase
\$29857*	24 Months \$734184*	
Monthly use tax.....\$17.91 Total monthly payment...\$318.40 Refundable security deposit...\$325.00 Customer cash down.....\$1600.00 Tax on rebate & down payment.. \$150 Customer pays at signing.....\$1781.40 Total of payments w/out Tax..\$7185.68 Total Mileage Allowed.....24,000 Mileage Penalty.....15¢/mile Closed End Lease	Monthly Use Tax.....\$22.10 Customer Pays.....\$7872.24 Total Mileage Allowed..24,000 Mileage Penalty.....15¢/Mile Closed End Lease	List Price.....\$21,775 Rebate.....-\$1,500 Stu Evans Discount..-\$1,752 your cost \$18,523*

Retail Lease-24 Months	Red Carpet Lease Advance Payment Program	or purchase
\$28075*	24 Months \$694776*	
Monthly use tax.....\$16.85 Total monthly payment...\$297.60 Refundable security deposit...\$300.08 Customer cash down.....\$1000.00 Tax on rebate & down payment.. \$105 Customer pays at signing.....\$1702.64 Total of payments w/out Tax..\$5738.00 Total Mileage Allowed.....24,000 Mileage Penalty.....15¢/mile Closed End Lease	Monthly Use Tax.....\$19.24 Customer Pays.....\$7109.52 Total Mileage Allowed..24,000 Mileage Penalty.....15¢/Mile Closed End Lease	List Price.....\$19,035 Rebate.....-\$750 Stu Evans Discount.....-\$1377 your cost \$16,908*

98 Mustang

98 Explorer XLT 4dr

Retail Lease-24 Months	Red Carpet Lease Advance Payment Program	or purchase
\$22343*	24 Months \$571344*	
Monthly use tax.....\$13.41 Total monthly payment...\$236.84 Refundable security deposit...\$250.00 Customer cash down.....\$1000.00 Tax on rebate & down payment.. \$150 Customer pays at signing.....\$1591.84 Total of payments w/out Tax..\$5362.32 Total Mileage Allowed.....24,000 Mileage Penalty.....15¢/mile Closed End Lease	Monthly Use Tax.....\$16.16 Customer Pays.....\$6101.26 Total Mileage Allowed..24,000 Mileage Penalty.....15¢/Mile Closed End Lease	List Price.....\$16,685 Rebate.....-\$750 Stu Evans Discount.....-\$1153 your cost \$14,782*

Retail Lease-24 Months	Red Carpet Lease Advance Payment Program	or purchase
\$35502*	24 Months \$809016*	
Monthly use tax.....\$21.31 Total monthly payment...\$376.33 Refundable security deposit...\$400.00 Customer cash down.....\$1000.00 Tax on rebate & down payment.. \$60 Customer pays at signing.....\$1836.33 Total of payments w/out Tax..\$8521.00 Total Mileage Allowed.....24,000 Mileage Penalty.....15¢/mile Closed End Lease	Monthly Use Tax.....\$485.52 Customer Pays.....\$8575.68 Due at Inception.....\$8575.68 Total Mileage Allowed..24,000 Mileage Penalty.....15¢/Mile Closed End Lease	List Price.....\$29,960 Stu Evans Discount.....-\$3,382 your cost \$26,578*

98 Escort LX

98 Contour LX 4 dr Sedan

Retail Lease-24 Months	Red Carpet Lease Advance Payment Program	or purchase
\$19705*	24 Months \$537776*	
Monthly use tax.....\$11.82 Total monthly payment...\$208.87 Refundable security deposit...\$225.00 Customer cash down.....\$1100.00 Tax on rebate & down payment.. \$126 Customer pays at signing.....\$1559.87 Total of payments w/out Tax..\$4729.29 Total Mileage Allowed.....24,000 Mileage Penalty.....15¢/mile Closed End Lease	Monthly Use Tax.....\$15.94 Customer Pays.....\$5760.32 Total Mileage Allowed..24,000 Mileage Penalty.....15¢/Mile Closed End Lease	List Price.....\$13,735 Rebate.....-\$1,000 Stu Evans Discount.....-\$870 your cost \$11,865*

Retail Lease-24 Months	Red Carpet Lease Advance Payment Program	or purchase
\$21369*	24 Months \$552048*	
Monthly use tax.....\$12.82 Total monthly payment...\$226.51 Refundable security deposit...\$250.00 Customer cash down.....\$1000.00 Tax on rebate & down payment.. \$105 Customer pays at signing.....\$1105.00 RCL and Dealer Cash.....\$750.00 Total due at inception.....\$1592.51 Total of payments w/out Tax..\$5128.56 Total Mileage Allowed.....24,000 Mileage Penalty.....15¢/mile Closed End Lease	Monthly Use Tax.....\$376.32 Customer Pays.....\$5896.80 Due at Inception.....\$5896.80 Total Mileage Allowed..24,000 Mileage Penalty.....15¢/Mile Closed End Lease	List Price.....\$15,240 Rebate.....-\$750 Stu Evans Discount.....-\$964.50 your cost \$13,52540*

FORD'S NEWEST SVT DEALER - SPECIAL DEALS!

98 CONTOUR SVT 4 DOOR SEDAN

Retail Lease-24 Months	or purchase	Red Carpet Lease Advance Payment Program
\$34708*		24 Months \$823848*
Monthly use tax.....\$20.82 Total monthly payment...\$367.90 Refundable security deposit...\$375.00 Customer cash down.....\$1000.00 Tax on rebate & down payment.. \$60 Customer pays at signing.....\$1060.00 RCL and Dealer Cash.....\$0 Total due at inception.....\$1813.90 Total of payments w/out Tax..\$8329.32 Total Mileage Allowed.....24,000 Mileage Penalty.....15¢/mile	List Price.....\$23,675 Stu Evans Discount.....-\$2049 your cost \$21,626*	Monthly Use Tax.....\$494.40 Customer Pays.....\$8732.88 Total Mileage Allowed..24,000 Mileage Penalty.....15¢/Mile Closed End Lease

98 MUSTANG COBRA 2 DOOR

Retail Lease-24 Months	Red Carpet Lease Advance Payment Program	or purchase
\$40582*	24 Months \$946320*	
Monthly use tax.....\$24.25 Total monthly payment...\$430.17 Refundable security deposit...\$450.00 Customer cash down.....\$1000.00 Tax on rebate & down payment.. \$60 Customer pays at signing.....\$1060.00 Total due at inception.....\$1951.17 Total of payments w/out Tax..\$9739.68 Total Mileage Allowed.....24,000 Mileage Penalty.....15¢/mile	Monthly Use Tax.....\$567.84 Customer Pays.....\$10,031.04 Total Mileage Allowed..24,000 Mileage Penalty.....15¢/Mile Closed End Lease	List Price.....\$27,390 Stu Evans Discount.....-\$2529 your cost \$24,861*

* Destination charge included. Plus tax, title, and plate.

Stu Evans Ford — 510 W. Main Manchester — 313-428-8343