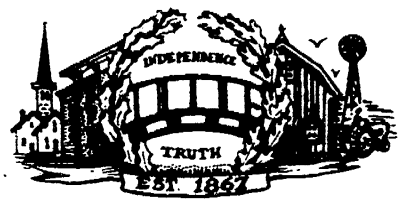


Thursday, January 9, 1997

# THE MANCHESTER ENTERPRISE

*Boldly Going Where No Newspaper Has Gone Before*

130th Year -- No. 12

Manchester, Michigan

40c per copy

## The Black Sheep Tavern Closes

Last Friday was the final day of business for the Black Sheep Tavern under the management of Kim Lee. On Saturday the locks were changed by building owner Tom Ellis thus abbreviating the tale of "what might have been."

Talking to each of the two parties involved in this short, sad story elicited two totally different points of view. Ellis indicated that "The place was turning into a dirty, smelly, rock and roll bar and people were complaining. I think the main problem was that [Lee] was too young and inexperienced." Lee maintains that she knew what was necessary to get the restaurant through the lean months of winter and was prepared to do whatever it took to make her business successful.

From the outside the restaurant seemed like a viable business. Still, the inevitable problems of training staff, fine-tuning the menu, deciding upon the right hours to be open, may have given it a slow start. Unable to open until late summer, Lee did not have an opportunity to build an out-of-town clientele before the winter months set in. Being so new to business, and with few resources, she did not have the extra money to promote her restaurant by widespread advertising.

But her background in restaurant management gave her



an edge and she was making adjustments - down sizing the menu, less-expensive entrees for both dinners and lunches, and presenting special events to attract customers. It seemed that her youth and energy might help pull her business through a long winter. And in an interview prior to the announcement of the closing, Kim expressed her deep appreciation to all who have supported her, and the restaurant, through the past several months.

The "special events" may have turned out to be her downfall. Again, the story varies depending upon to whom you're talking. On one thing both Ellis and Lee agree - the most recent band who played on a weekend night was too loud. Ellis maintains this was the last straw. Lee says that she requested the band leave and agreed with Ellis (who retains both the entertainment license and the liquor license) to only have acoustic bands from then on.

But the bad feelings remained. The complaints were

more frequent and diverse. According to Ellis, the restaurant stayed open too late. The staff left too many messes. Liquor was in view during Sunday morning brunches. Too many patrons were drinking and not eating.

Ellis claims he did not want to close the restaurant but he had no choice. He felt that it was developing a bad reputation. He regrets being seen as "the bad guy." Lee feels harassed and believes their verbal agreements were breached.

Sadly, in this story everyone loses. A young business woman will not realize her vision for the restaurant. Those in the community who enjoyed another opportunity for an excellent meal in Manchester are back to their original choices. Both the building owner and the business owner are left with a large liability on their hands. Once again we have a vacancy in the business district.

We hope it's not for long.

- Staff report

## Quiz Bowl Makes History

On December 18th, Varsity Quiz Bowl traveled to Milan to compete in a well-earned victory. A milestone was reached, with each member of the team scoring at least 20 points.

At half-time our Dutch pulled far ahead with a score of 140-80, but slowly lost their lead when Milan passed them, 190-175. Within the last five minutes of the game, the Dutch scored the victory, winning 235-220. Milan suffered a tough defeat, and everyone, on both teams, played exceptionally well.

Team leaders were Brad Kemner (60 points), Angelo Petrino (50 points) and Amber Reed with 30 points.

Great job, team, and good luck next week!

## Teacher Contract Still Not Settled

The 1996-97 teacher contract has still not been signed. MEA president, Jim Fielder, would not comment on the status of negotiations over the holiday break, other than to say there was nothing to announce yet. A meeting has been scheduled for further discussion of the issue.

Board President Paul Kluwe indicated that he is "very optimistic that we reach a settlement soon," but was unable to make any further comment.

## Sheriff Department Agreement Reached

A letter of agreement has been signed between the Washtenaw County Sheriff Department and the Village of Manchester at Monday's council meeting. A contract to provide police services for 1997 was signed in December.

Minor adjustments were made to the letter of agreement, including local servicing of Department vehicles. We will also soon be seeing "Manchester" decals added to the local patrol cars. A third change will provide for orientation for new deputies assigned to the Village under the shift bid agreement.

### Inside This Issue

Community Calendar.....	Page 2
Greene Manufacturing, Inc.....	Page 3
Editorial/Opinion.....	Page 4
Local Government.....	Page 5
Church Pages.....	Page 6
Announcements.....	Page 7
Batter Up!.....	Page 8
School Opens.....	Page 9
People.....	Page 10
Senior Citizens.....	Page 11
School.....	Page 12
Sports.....	Page 13
Classifieds.....	Page 14
Organizations.....	Page 15

# Community Calendar

## Scheduled Meetings

### Bridgewater Twp.

Carol Peacock, Supervisor  
517/456-7303

Karen Weidmayer, Clerk  
13360 E. Austin  
428-8641

Planning Commission  
2d Monday 7:30  
Township Board meeting  
3d Wednesday, 7:30

### Freedom Township

Town Hall 428-7545  
11508 Pleasant Lk. Rd.  
Robert Little, Supervisor  
Julie Schaible, Clerk  
13785 Pleasant Lk.  
428-7241

Township meeting  
2d Tuesday 8:00  
Planning Commission  
meets on First Tuesday  
of all even numbered months

### Manchester Township

Town Hall 428-7090  
Ron Mann Supervisor  
275 S. Macomb  
Kathleen Hakes, Clerk

Township meeting  
2d Monday 8:00  
Planning Commission  
4th Tuesday

### FIRE DEPARTMENT

428-9439 non-emergency

### Sharon Township

Supervisor Gary Blades  
5340 Hazel Rd., Grass Lake  
428-9518

Teri Aiuto, clerk  
428-7002,

17250 Bethel Church Road

Township Meeting  
1st Thursday 8:00  
Planning Commission  
2d or 3d Thursday

### Manchester Board of Education

Paul Kluwe, President  
Meetings  
3d Monday 7:30  
M.H.S. Media Center  
Superintendent - Ron  
Niedzwiecki 428-9711

Village of Manchester  
Larry Becktel, President  
Jeff Wallace, Manager  
428-7877

Village Council Meets  
1st & 3d Monday, 7:00  
Planning Commission  
2d Tuesday after the first  
Monday, 7:30 PM

The Manchester Enterprise is published each Thursday at 109 East Main St., Manchester, MI 48158, with second class postage paid at the Manchester Post Office.

POSTMASTER: Send Form 3972 to: Manchester Enterprise, P.O. Box 37, Manchester, MI 48158.

The Manchester Enterprise, Inc.  
(313) 428-8173

Editor & Publisher  
Teresa M. Benedict

Production Manager

Marsha Johnson Chartrand  
Julie Schaible, accounting  
Andy Supers, graphic artist

One-year subscriptions are \$18 within Washtenaw County, \$20 outside the county. Deadline for display ads, photos, classifieds and news articles is Friday at 5:00 p.m. The Manchester Enterprise. No part of this publication may be used without the written permission of the publisher.  
© 1996 The Manchester Enterprise

## COMMUNITY EVENTS

### Monday

1st Monday: Manchester Township Library Board meets 7:30 pm.

1st Monday: Manchester Masonic Lodge, business meeting 7:30

1st & 3d Monday: Manchester Village Council, 7:00

2d Monday: Bridgewater Township Planning Commission meets 7:30

2d Monday: Manchester Knights of Columbus meets 8:00 PM. Ed Barnard, Grand Knight

2d Monday: Manchester Township Board meets 8:00

2d & 4th Mondays: Manchester Optimist Club

3d Monday: School Board meets MHS Media Center 7:30

3d Monday: United Way Board Meetings, 7:30 at First of America Bank

### Tuesday

2d Tuesday: Freedom Township board meets 8:00

2d Tuesday after 1st Monday: Village Planning

Commission, 7:30 PM

2d Tuesday: Manchester Area Senior Citizens, 9:30 am

2d Tuesday: 20th Century Club, 7:30 pm.

2d & 4th Tuesdays: Shakespeare Club, 2:00 & 4:00

3d Tuesday: Manchester Historical Society, 7:30 at Blacksmith Shop

4th Tuesday: La Leche League 10:00 am call 428-8831 for location and info.

4th Tuesday: Klager PTO 6:30 PM at the school. Call 428-8321 for info.

4th Tuesday: Manchester Township Planning Commission

Every Tuesday: Boot Stompers meet at American Legion 7-9 PM

Every Tuesday At Your Home: RECYCLE - put containers at curb by 7:30 AM

### Wednesday

1st Wednesday: Raisin Valley Land Trust, at the Blacksmith Shop, 7:30 PM

1st Wednesday: Veterans of Foreign Wars, 7:30 pm

2d Wednesday: American Legion Auxiliary 7:30 PM

2d Wednesday: Manchester Recreation Task Force, 7:30 at Blacksmith Shop

3d Wednesday: Manchester Men's Club 7:30 PM

3d Wednesday, WIC Program, 9:30-3:00 Senior Citizens Bldg.

3d Wednesday: Bridgewater Township Board, 7:30 PM

4th Wednesday: Manchester Township Fire Department meeting, 7:30 PM

Every Wednesday: Community Band - 7:30 PM

### Thursday

1st Thursday: Sharon Township Board meets 8:00

1st Thursday: American Legion Post #117, meets 7:30

2d or 3d Thursday: Sharon Township Planning Commission

3d Thursday: Cub Scout Pack Meeting, 7:00 pm

4th Thursday: Community Resource Center Board, 7:30

Every Thursday: AWANA 6:30-8:30 for kids ages 4-6th grade at Community Bible Church

### Friday

Every Friday: AA meetings 7:00 PM At Emanuel Church Kitchen. All are welcome; for more information call Church office 428-8359.

### Notices

1st & 3d Saturdays: Manchester Kiwanis meets. Call 428-7722 for information on meeting place and time.

### Coming Events

The Community Calendar is a regular feature of the Enterprise. If your meetings or special events should be listed here, please call us at 428-8173.

**D.A.R.E. 1st ANNUAL BENEFIT HOCKEY GAME**  
W.C.S.D. D.A.R.E. vs CHELSEA D.A.R.E.  
Sponsored by Chelsea South School & D.A.R.E.  
SATURDAY, JANUARY 11, 1997 • 5 p.m.

*Ice Time Donated by the*  
**ANN ARBOR ICE CUBE**

GRAND PRIZE - Train Trip for 2 to Toronto & \$200 Cash  
Donated by HORIZON TRAVEL

FIRST PRIZE - 27" RCA Home Theater System  
Donated by HEYDLAUFFS & Chelsea D.A.R.E. Sponsors

1 Child 12 & Under Admitted Free with Adult  
~ Many Kids Prizes Raffle During Intermissions ~

All Proceeds To Benefit Washtenaw & Chelsea D.A.R.E. Programs  
RAFFLE TICKETS Available from Washtenaw County Sheriff's Dept.  
or the Chelsea Police ~ \$5.00 each (Need not be present to win.)  
*Flyers and Tickets compliments of American Speedy Printing Centers of Ypsilanti*

## DAN'S WESTSIDE AUTOMOTIVE

660 W. Main St. 428-9455  
24 Hour Wrecker Service

Tune Ups  
Transmission  
Custom Exhaust  
Air Conditioning  
Oil Lube & Filter

Brakes  
Tire Rotations  
Chassis & Suspension  
Front End & Four  
Wheel Alignment

### WINTERIZE SPECIAL - \$44.95

includes:

Complete inspection of cooling system - Flush -  
up to 2 gallons new Antifreeze\*

Mon - Fri 8:00 - 6:00 Sat 9:00 - 1:00

Free Pick up and Delivery Service

\*if sierra needed additional cost

## Dial-a-Garden

971-1129



Dial-A-Garden, a service of the Washtenaw County/Michigan State University Extension Service, is a system of pre-recorded gardening messages. The

feature has a format which lets callers with a touch-tone phone select which message they wish to hear. The messages are changed monthly. To contact Dial-A-Garden, call 971-1129. Enter one of the 3 digit codes listed below. Persons with a rotary phone should call 971-0079 and hold on the line for the operator.

### January 1997

- 101 After Christmas care of poinsettia
- 102 Recycle your Christmas tree
- 103 Catalog time
- 104 Selecting vegetable varieties
- 105 Testing leftover seeds
- 201 Plant hardiness zones
- 202 Storm injury on trees
- 203 Home greenhouse
- 204 Growing ferns
- 205 Gardenias
- 301 How many vegetables to plant?
- 302 Azaleas
- 303 Dwarf fruit trees
- 304 Growing fruit trees
- 305 Growing bromeliads
- 401 Growing succulents
- 402 Household ants
- 403 Upcoming gardening events
- 404 Shopping pest control firms
- 405 Fruit flies? Or are they?

# The Second Front Page

## Spotlight on local business

### Quietly Making A Difference in the Community

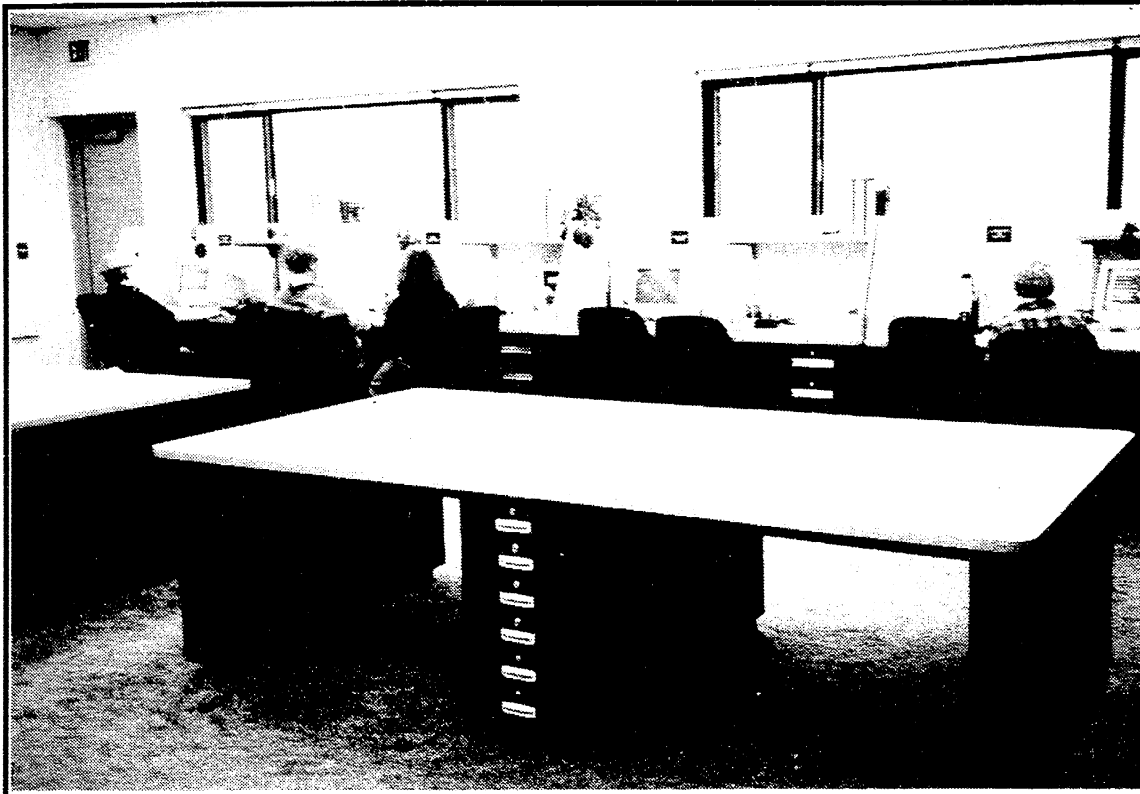
Although not a new business in Manchester, many residents are perhaps unaware of a low-key manufacturing plant in Freedom Township which has played an important part in the new construction at Nellie Ackerson Middle School. Greene Manufacturing, Inc. has been located on Fletcher Road at the corner of Ellsworth since 1978, and it was a thriving ten-year-old business then. The shop will be expanding once again this spring.

It's possible you have driven past GMI many times and never realized what it is they do there. Maybe you've even thought the business was named after the color of the pole building out of which they're working.

In reality, the business was begun in 1968 by Jerry Greene and his wife, Wilma. It's now owned and managed by their son, Bruce. Their primary business is making educational furniture for a wide variety of applications - such as drafting labs, computer tables, and specialized curriculum work stations. They also do custom work for industry, auto companies, and hospitals - making work stations and other furniture products for various applications. All products are manufactured to order.

And this is where they have made a difference in our community's new showcase - in the Technology and Computer labs at Manchester Middle School. "We contacted the school directly, but the committee had already been considering our firm through one of our representatives they had seen at a show," explained Bruce Greene.

At Klager School, the computer lab uses mostly desks and chairs in a traditional arrangement, but Greene Manufacturing did build a custom desk for their lab which can be used by a special needs student. A table built as a show model adapted for elementary school computer labs was auctioned off at the Manchester CoOp Preschool Auction in November and purchased to put under some lucky child's Christmas tree.



*The layout of the computer and technology labs at the Middle School as well as the easy functioning of the work stations has made a great difference in its effectiveness*



*...And here is the crew at Greene Manufacturing, Inc., who made it all possible. Fourth from left in the back row is Bruce Greene, President.*

The specially designed desks which are an important part of the "technology" of the Middle School labs were created by Greene Manufacturing from start to finish. Beginning with a layout design of the classrooms from the architectural floor plans, they then went on to determine how their furniture could best serve its purpose. Part of their services include consulting for planning new

technology labs, and submitting layout plans of furniture, equipment, ventilation systems, and power sources.

"In designing the classroom, and the furniture to go in the room, there are a lot of things a lay person wouldn't think of," Bruce Greene commented. And he's right. As you walk in the door you would probably notice that the desks are neatly arranged and maybe that they are stra-

tegically placed to provide a basic traffic pattern.

What you probably would not notice at first glance is that the desks are designed to accommodate right-handed and left-handed students alike; that the height is suitable for the age of students who will be using these computers; that there is not just a traffic pattern but a planned flow to the classroom arrangement; that the space

meets ADA requirements; or that the wiring and power management also contribute to the easy accessibility at all the work stations.

Using computer aided design programs, the engineers at Greene take the architectural floor plans, place them on the computer, and then make changes and adaptations to come up with a basic concept drawing. A shop drawing and the final design are also detailed on the computer.

"Our design team has been researching new concepts to furnish the ever-changing educational environment," says Greene. The scope of the project was to include traditional work stations as well as new and modern designs to obtain a "high tech" atmosphere for students and faculty alike.

Their design staff consulted interior design experts to put together a collection of color schemes that are the most popular in today's interior design. Using Computer Aided Design (CAD), they can generate sample floor plans for their customers to obtain a "feel" for the flow and functionality of the lab layout.

Their manufacturing facilities are equipped with the latest CNC machining equipment to ensure high quality and maintain affordability.

Bruce takes a great deal of pride in recalling a special project they completed for General Motors. They conceptualized a work station which saved an inordinate amount of time during switchovers on the assembly line. It is estimated that GMI's design resulted in over \$3 million worth of time savings over a three year period.

For over 18 years this company has been part of our community. We are proud to recognize some of their important contributions, both within our community and beyond.

- Marsha Johnson Chartrand



# Editorial / Opinion Page

## Pink's Opinion

Captain Pink is appalled by the actions of a few members of the community. **The Manchester Enterprise** has been published once a week for over 130 years. Since our first publication there have been articles and illustrations of every type in the paper.

We at the paper have always welcomed community involvement. We accept articles from local tax payers, if said article meets the requirements stated in our state's publication laws.

There have been times when citizens have given us pictures or articles on a personal level from one loved one to another. These personal and often inside jokes have said "I'm Sorry" or "I Love You."

When members of our community don't agree with what is printed they seem to make it perfectly clear to the Enterprise that they don't like a particular article and we have let them down. Once they have stated what is on their mind - in a not so professional way - and cancelled their subscription to this beautiful paper, they leave.

Never does the offended citizen give us a chance to put up a defense. We here at the Enterprise don't support or condone all the actions of the community. Pink has asked himself where the role models are in Manchester.

I don't see how the actions of certain members of this community, earn respect from others.



- by gar

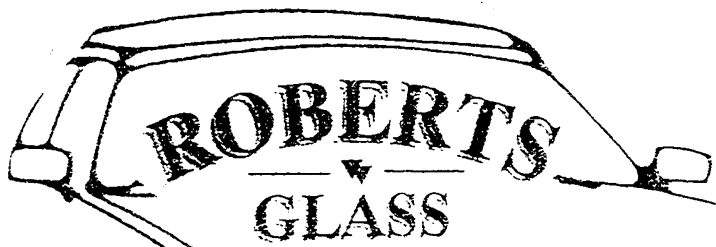
## Out & About

Sometimes we overlook or take for granted the efforts of individuals around the community who quietly go about needed to be accomplished jobs. One individual comes to mind who has been active with the Chicken Broil, Men's Club, various Booster activities and other needed jobs.

Few of us in the community realize the amount of advance work that is required of the co-chairmen of the Chicken Broil. The logistics of acquiring supplies, such as chicken halves, charcoal, grids, holding containers, milk, chips, plastic utensils, radishes, cabbage, rolls, butter, boxes, pop, tables, chairs, not to mention personnel, transportation, setup and tear down involved. The person I have in mind is just one of the co-chairs.

Additionally this guy has been a very active officer, all offices, with the Men's Club. We take for granted many of the Men's Club activities and the things they have done over the years; our Fourth of July Fire works, pavilion construction at several of our parks, participation in the Christmas in April fix-up programs, behind the scenes help for the needy, roadside clean up of M-52, and the list goes on and on.

Not only is this person one of the Good Guys but just an all around good egg. Some times we fail to appreciate guys like BOB RHEES but gar tips his hat to you Bob. Thanks from all of us, even though we sometimes like to give you a hard time.



**WINDSHIELD REPAIR & REPLACEMENT**  
610 E. Industrial Dr. (313) 475-5811  
Chelsea, MI 48118 FAX (313) 475-5760



Larry Becketl  
135 E. Main St., Suite 200  
Manchester, MI 48158  
Phone: 428-7331



An IRA from FB Annuity Company guarantees you a lifetime retirement income. You save on taxes, too, because your interest earnings are tax-deferred. You might also qualify to tax-deduct all your IRA deposits. Call today.

**Making your future more predictable.**



## The Manchester Enterprise

welcomes letters to the Editor, Guest Editorials, and your comments, suggestions and opinions.

**We ask that all letters submitted for publication be signed!**

**Should there be extenuating circumstances for withholding your name, we will give that full consideration.**

**We reserve the right to edit letters for publication**

Robert Kellum, Chair  
Manchester Township Planning Commission  
Dear Mr. Kellum,

I have enclosed part of an article from MSPO Michigan Planner regarding preserving a sense of place. The helplessness felt by many people in this township regarding the farm being split up on Sharon Hollow Road speaks of the ineffectiveness of your plan to preserve the rural character that makes Manchester what it is. I like the phrase, "The holistic interaction of the ingredients which produce a sense of place are frequently not understood by the local population until they have been lost." The blanket approach of your plan fails to set up a strategy that will preserve this "holistic interaction of ingredients." Unfortunately your planning commission is setting things up for Manchester to become just another rural subdivision.

I have a great deal of respect for investment and believe that the entrepreneur should be given financial reward to encourage future entrepreneurs to make like meaningful contributions to society. However, I do not respect the splitting of land into ten acre parcels as a creative activity that makes the world a better place. I have studied the matter and much

of the profit is made by passing on the cost and the losses to the community. In economic terms the developer makes off like a bandit, because he is not forced to internalize his externalities.

When I see what will be lost by this farm being split, in terms of our sense of place, agricultural production, greater dependence on foreign oil, I just feel that your plan fails. When I see this blanket approach of AR-District one house per two acres. This does not preserve our scenic view. We need planning to prevent development that destroys our scenic views.

Also, regarding the six acres on Sharon Hollow being zoned as Low Density Residential with a one house per acre density. Has the planning commission considered if the community would want what it would get if there were one house per acre on this six acres. When the impact on the Iron Creek Watershed, the lake and my family's land due to increase in trespassing without a commitment by the township for adequate police protection are ignored. I do not see how you call this planning. Planning is not a blanket, four house per acre here and one house per two acres there. Good planning facilitates community "interaction" to increase population and to increase the

number of families and people who can enjoy our township and become part of our community without destroying what we have come to enjoy and that others are moving here for, only to find out that what they have moved here for is destroyed.

Planning is not a wetland adjacent to Iron Lake. I am referring to the property of Elmer Yonge, being zoned residential in order to facilitate the extraction of disproportionate taxes from him for the Township. Placing this burden disproportionately on him does not facilitate the best course of development. It only acts as a development pressure. It creates a disincentive for him to preserve his property next to the lake that is an essential part of the Iron Creek Watershed and makes a great contribution to giving Iron Lake the character that its residents value. This is another example of how your plan fails to look to the land and its characteristics to establish a plan that preserves the character or sense of place in this township.

I am also very concerned about Wolf Road. The township may view it as the county's problem. However, it is a floating log road. It may actually not be able to be replaced. To replace it would require the building of a bridge, which would be very cost prohibitive and possibly not feasible given current regulation of wetlands. Also the alternative of opening Wolf Road from Noggles would present other problems of ecological impact and would likely require the county to repurchase the easement rights. I feel your plan should consider the impact on this road of these cement trucks going over it to build the residences that the plan allows in that area.

Also, as more of the scenic views of the township are lost, I feel less and less inclined to advocate keeping the family land. My heart just breaks when I come out here. I chose not to build out here, because I did not want to contribute to destroying what makes this township what it is. I find the result of non participation in this destruction leaves me a nonresident without the power of the vote necessary to protect an important part of my life. Perhaps I need to move out here and run for Township Supervisor. Especially considering the trend in Washtenaw County of Township Supervisors being elected on platforms of controlled growth.

Sincerely,

Belinda Fitzpatrick

## The Results

In the Christmas issue I shared a new version of the Twelve Days of Christmas and stated I would let you know the results. Monday was the twelfth day and I made it, quite happy too!

During the twelve days I concentrated on what I could give to my loved ones - Undivided Attention, Sincere Appreciation, No Criticism or Complaints, Listening Ear, Feeling of Importance, No Argument, Hugs, Play Time Together, Respect of Their Opinion, Their Interests and Twelve Reasons Why I Love Them!

Each morning I checked the list and concentrated on the item of the day. It started off easy until the third day when I had to catch myself on "no criticism and complaint" - I had to stop in the middle of a sentence and ask if we could have that particular discussion tomorrow. I realized later in the day that it was not such a big deal and let it go their way.

Life truly is too short to nit pick about the little things. It was easier to give out the positive actions once I thought of them. Holding back on the negatives just took a little more restraint on my part and things went more smoothly. The days were pleasant and I felt good, especially concentrating on the positives. It was easy for me to play; I've always loved having a good time, but sometimes it is hard to step back and take time out of a busy day to give that Loved One you!

My loved ones did not catch on to what I was doing until the twelfth day when I had to sit down and say twelve reasons why I love them, culminating in the Twelfth reason - I struggled to come up with eleven individual ones until I stated,

"I Love You because you are YOU!"

Take the time to appreciate your loved ones. And be sure you give of yourself.

- Teresa M. Benedict

## Bridgewater Township Board Meeting Synopsis

December 18, 1996

Supervisor opened the meeting with all newly elected board members present. Minutes and treasurers report were approved as presented.

Supervisor announced the appointment of Wade Peacock to the County Planning Commission.

Board reviewed the Historic District Map of our township from the Washtenaw County Planning Commission. Corrections were made after the meeting. A letter was reviewed from the Washtenaw County Road Commission on Traffic Control Orders.

Supervisor recommended the following appointments for the coming year;

Planning Commission: Reappoint Gabe Dull and Jim Fish. Mary Jane Wahl representative from the township board.

Board of Review: Reappoint John Porter and Alvin Wahl Sr., appoint Ronald Ellison.

Board of Appeals: Reappoint Jim Fish, appoint Glen Finkbeiner and Alvin C. Wahl Jr. Board of Appeal positions were adjusted for 3 year terms.

License Board: Reappoint Jim Fish and Dave Faust. Appoint Shirley Fraley as a new member.

Road Commission: Vic Mann was reappointed to serve as a Township Board representative.

Board approved all appointments.

Delegates were also appointed to various committees that the township is involved in.

Old Business included; Oath of Office, response from zoning inspector from Miller letter, Stimac Land property, Bartlett Road haul route and approval of the Heritage Route by a resolution.

New Business included; Order of new agenda for reports, a contracted planner for the township planning commission, tree removal, Annual Road Commission meeting with township board and road board, compliance review of Adrian Sand and Stone and possible planning and maintenance committee for the township.

Parr showed the board an old picture of school children from the township that buried a time capsule on the township property. Mrs. Hoffman had only slight memories of this, 75 years ago. Township board discussed where the capsule might be located on the property.

The Planning Commission reported that the draft will be complete for the new zoning ordinance in the next few months, and public hearing will be some time in the spring.

Zoning report was given by the Clerk with the expense report from the inspector. Several new single family dwelling permits, eight building permits, two Lot Splits, eight location confirmations, seven recycling assessment fees and four letters written.

Board discussed problems with board of review changes not following through into the tax statements.

With no further business to come before the board, Christmas Cookies and Punch were enjoyed by all.

Karen Weidmayer, Clerk.

Approved by Carol Peacock, Supervisor

## NOTICE OF PUBLIC HEARING MANCHESTER VILLAGE PLANNING COMMISSION

TUESDAY, JANUARY 21, 1997

7:30 P.M.

Notice is hereby given that the Manchester Village Planning Commission will hold a public hearing on Tuesday, January 21, 1997 at 7:30 p.m. at the Manchester Township Hall, 275 S. Macomb St., Manchester, Michigan.

The purpose of the public hearing is to receive written or oral comments on the petition of James Hansen, representative Dennis Bartlett, for re-zoning of the parcel of land located at Gieske and Hibbard. Legal description available at Village Office. The parcel is presently zoned AG-Agricultural. The application asks for a change in zoning to MHP-Mobile Home Park.

If you wish to make a comment on the petition but are not able to attend the public hearing, you may send written comments to: Karen Tucker, Village Clerk, 120 S. Clinton St., Manchester, Michigan 48158 or deliver them in person, no later than 4:00 p.m. on Tuesday, January 21, 1997.

Karen Tucker  
Village Clerk

## APPROVED PROCEEDINGS MANCHESTER VILLAGE COUNCIL

DECEMBER 16, 1996

The regular meeting of the Manchester Village Council was called to order at 7:00 PM. Council members present: Ames, Becktel, Brooks, Conaway, Marshall, Vought. Also present: Clerk Tucker, Manager Wallace, Gary Wiedmayer-DPW, Sgt. Haensler-WCSD, Kathy Kueffner-Manchester Chronicle, Larry Wight-Layne Northern, Don Limpert.

The minutes of the December 2, 1996 regular meeting were approved as presented on a motion by Marshall, support by Vought. Vote: Ayes-all.

The proceedings of the December 2, 1996 regular meeting were approved as presented on a motion by Conaway, support by Vought. Vote: Ayes-all.

The agenda was approved as amended on a motion by Marshall, support by Vought, Vote: Ayes-all.

Enter Brooks and Ames 7:02 PM.

**SHERIFF REPORT** - Motion by Brooks, support by Ames to accept the Sheriff Report for November 1996 as presented. Vote: Ayes-all.

**DPW REPORT** - Motion by Becktel, support by Ames to approve, not to exceed \$7,987.00 for a box for the 1-Ton Truck. Roll Call Vote: Ayes-all.

**MANAGER REPORT** - PUBLIC HEARING - Planning Commission will be holding a public hearing on January 21st on the Mobile Home Park Re-zoning re-

quest. RHEES 90 DAY REVIEW - Wallace reviewed Bruce and reported that he had met all of the goals asked of him. Motion by Brooks, support by Conaway to increase the rate of pay for Bruce Rhees by \$1.00 per hour, retroactive to December 1, 1996. Vote: Ayes-all.

**1997 SHERIFF CONTRACT** - Discussion was held on results of the Sheriff Committee meeting. Sgt. Haensler explained that all police agencies across the country are experiencing recruitment problems lately. Further discussion was held on group orientation of new officers to the Village. Jerry will work up a 3 to 4 hour training and standard operating procedures for the Village and have it in place for the spring shift bid. Community orientated policing is going to be a county-wide goal for 1997 in the Sheriff Dept. We will be seeing "Manchester" decals on the cars after the first of the year. Becktel stated that the Letter of Agreement will be forthcoming. Motion by Becktel, support by Brooks to approve the 1997 Sheriff Contract in the amount of \$269,348 for four deputies for the Village, \$.33 per mile for mileage, subject to receipt and approval by the Village Manager and Sheriff Dept. Committee of the Letter of Agreement. Roll Call Vote: Ayes-all.

Motion by Becktel, support by Vought to adjourn at 8:10 PM. Vote: Ayes-all.

Karen Tucker  
Village Clerk

## Village of Manchester Planning Commission Meeting

Tuesday, January 14, 1997

7:30 P.M.

### AGENDA

1. Call meeting to order
2. Approval of Agenda
3. Approval of minutes of previous meeting.
4. Public Participation
5. Reports from Administration
6. New Business
  - A. Hire recording Secretary
7. Old Business
  - A. Discuss mobile home park re-zoning request
  - B. Discuss Code book review
8. Adjourn

## Police Beat

Reports from Station 4, Washtenaw County Sheriff Department, Village of Manchester. December 16-29, 1996

**Sunday, December 29:**  
3:23 PM Kids throwing luminaria bags into street, Washington Street

3:58 PM Mental problem, Hibbard St.

**Monday, December 30:**  
10:20 AM, 10:32 AM, 10:34 AM - Ordinance Violation, blight vehicles, Madison Street

10:35 AM Ordinance Violation, Blight vehicle, Railroad Street

7:23 PM Telephone harassment, City Road

**Tuesday, December 31:**  
12:20 AM Motion alarm at High school

**Friday, January 3:** 7:30 AM Animal Control problem, Torrey St.

4:49 PM Juvenile trouble, Territorial St

8:29 PM Animal Control problem, Torrey St

**Saturday, January 4:**  
1:49 AM Drive off at Hop In

8:13 PM Fraud, Main Street

**Sunday, January 5:**  
10:08 AM Rescue, South Washington

3:15 PM Animal Problem, Duncan St

6:19 PM Parking Violation, Manchester Manor

6:55 PM Larceny from Vehicle, East Main

**Monday, January 6:** 4:03 AM Alarm at Klager School

6:33 PM Report of Car vs. Deer crash

10:59 PM Car trouble, Main Street

## Bruce A. Bates D.D.S.

500 Galloway Drive, Manchester, Michigan

**(313) 428-8277**

### Complete Family Dentistry

• Adults & Children Always Welcome as New Patients.

We Accept Dental Insurance

VISA • MasterCard • Discover

Healthcare Creditline Dental

### Gentle Dental Care

Relaxing Gas Available Upon Request

Locally Owned and Operated

## Modern Waste Systems, Inc.



7255 S. Brooklyn Rd.

P.O. Box 275 Napoleon, MI

**(517) 536-4900**

COUPON COUPON COUPON

**One Month FREE** with this coupon

**For All New Customers**

Seasonal Excluded

(maximum savings of \$20)

BAPTIST CHURCHES

**NORTH SHARON BAPTIST CHURCH**—Bobby D. Toler, Pastor, Tim Butterfield, Associate Pastor, Sylvan & Washburn Rds- 428-7222; SS 10:am; Morning Church 11:am; Eve. Church 7:pm; Weds. Bible Study & Youth Mtg 7:pm  
**VICTORY BAPTIST CHURCH**—Jon King, Pastor; 423 S. Macomb, 428-7506, Sunday School 10:00 a.m.; Morning Worship 11:00 a.m.; Evening Public Bible Class 6:00 p.m.; Wednesday Praise and Prayer 7:00 p.m.

CATHOLIC CHURCH

**ST. MARY CATHOLIC CHURCH**—Rev. Francis J. Murray, Pastor; Telephone 428-8811; Masses: Monday thru Wednesday, Friday 8:30 a.m., Thursday 7:00 p.m., Saturday 5:00 p.m., Sunday 8:30 a.m. and 10:30 a.m.

EPISCOPAL CHURCH

**ST. BARNABAS EPISCOPAL CHURCH** - Rev. Jerrold F. Beaumont, OSP, MTh, DD; 20500 Old US-12; Chelsea; Telephone (313) 475-8818; Worship Sundays at 10:00 AM

LUTHERAN CHURCHES

**OUR SAVIOR LUTHERAN CHURCH** (Lutheran Church Missouri Synod) Rev. Dale Grimm, Pastor - 1515 South Main Street (M-52), Chelsea. Telephone 475-1404; Heritage Service 8:15, Contemporary Worship 10:30 AM Sundays

**ST. JOHN'S LUTHERAN CHURCH**—Rev. Erling Aaserud, Pastor Austin Road, Bridgewater; Telephone 429-7434; Sunday School 9:15 AM; Worship 10:30. Various mid-week & Bible study groups.

**ST. THOMAS LUTHERAN CHURCH**—Rev. John Kayser, pastor; 10001 W. Ellsworth Rd., (5miles North and 6-1/2 East of Manchester); Telephone 663-7511; Schedule: Sunday School 9:30 AM; Worship 10:45

**ZION LUTHERAN CHURCH**—Pastor David Hendricks; 3050 S Fletcher Road, Chelsea; Church Office 475-8064, Susan Wiley, Secretary 428-7268. Sunday School 9:00AM; Worship 10:15 AM

UNITED METHODIST CHURCHES

**MANCHESTER UNITED METHODIST CHURCH**—Rev. Thom Davenport, Pastor; 501 Ann Arbor St. Phones: Parsonage 428-8013, Church 428-8495. Worship 10:30 AM

**SHARON UNITED METHODIST CHURCH**—Rev. Peggy Paige, Pastor, Corner of M-52 and Pleasant Lake Roads; Church- 428-7714, Parsonage- 428-8430; Sunday School 10:00 AM, Worship 11:00 AM

MORMON CHURCH

**CHURCH OF JESUS CHRIST OF LATTER DAY SAINTS (MORMONS)**—Gary Spooner, Branch Pres; 1330 Freer Rd, Chelsea; 475-1778; Sacrament 9:30 am; Sun. School, 10:40; Relief Soc, Priesthood & Youth 11:40

NON-DENOMINATIONAL CHURCHES

**COMMUNITY BIBLE CHURCH** — Pastor Jody Riethmiller; 8400 Sharon Hollow Rd. Telephone 428-8709; Worship Service 10:00 AM; Sunday School 11:30 AM; Wednesday Bible Study & Prayer, 7:30PM. All are welcome!

**IRON CREEK COMMUNITY CHURCH**—Tom Butterfield, Pastor; English and Sharon Hollow Roads; Sunday School 10:00 AM; Morning Church 11:00 AM; Sunday Evening 7:00 PM

**CLINTON ASSEMBLY OF GOD**—Rev. Richard Coury; 13300 Clinton-Manchester Road; Phone 517-456-7510; Sunday School 9:30AM; Worship 10:45; Sunday Eve 6:30; Weds Prayer, Bible Study, Youth 7: PM

UNITED CHURCH OF CHRIST

**BETHEL UNITED CHURCH OF CHRIST**—Rev. Richard E. Hardy, minister, 10425 Bethel Church Road at Schneider Rd.; Phones: Parsonage & Church 429-7155/428-8000; Church Service 9:30AM

**EMANUEL UNITED CHURCH OF CHRIST**—Rev. Dr. Vincent Carroll, Pastor, Phone: 428-8359; Sunday School 9:15 AM, Worship 10:30 AM, Fellowship 11:30 AM

**ST. JOHN'S UNITED CHURCH OF CHRIST**—Rev. Dr. Nancy M. Doty, Pastor; 12376 Waters Road, Waters and Fletcher Roads, Rogers Corners; Worship and Sunday School 9:30AM

UNITY CHURCH

**UNITY CHURCH OF JACKSON**—3385 Miles Road, Ackerson Lake, Jackson, MI, 517-764-6900; 11:00 a.m. Sunday Services and Sunday School.

COMMUNITY BIBLE CHURCH

**Sunday, January 12:** Worship Service 10:00 AM; Sunday School 11:30 AM.

MANCHESTER UNITED METHODIST CHURCH

**Wednesday, January 8:** 3:15 p.m. Scouts; 6:30 p.m. DISCIPLE Bible Study

**Thursday, January 9:** 3:15p.m. Scouts 7:00 p.m. Trustees

**Saturday, January 11:** 8:00 a.m. UMM

**Sunday, January 12:** 9:00 a.m. Sunday School; 10:30 a.m. Worship; 11:45 a.m. Choir Practice

**Monday, January 13:** 4:00 p.m. Scouts

**Tuesday, January 14:** 6:00 p.m. Scouts; 7:00 p.m Finance Committee

**Wednesday, January 15:** Time TBA UMW; 6: 30 p.m. DISCIPLE Bible Study

EMANUEL UNITED CHURCH OF CHRIST

**Wednesday, January 8, 1997:** 9:30AM Women of Emanuel; 12:00PM Clergy Cluster; 1:00PM Emanuel Quilters; 6:15PM Girl Scouts; 6:30PM Basket weaving; 6:30PM Bell Choir ; 7:00PM PASS; 7:00PM CE Board meeting; 7:00PM Missions Meeting; 7:30PM Adult Choir

**Thursday, January 9:** 12:00 PM Sr Meal; 6:30PM Brownies; 6:30PM Worship; 7:00PM Bible Study; 7:30PM Board of Deacons meeting

**Friday, January 10:** 7:00 PM AA; 7:00 PM Bible Study

**Saturday, January 11:** 9:00 AM Take down Live Nativity; 9:00 AM Village Piecemakers

**Sunday, January 12:** 9:15AM Sunday School; 10:30AM Worship Service; 11:30AM Fellowship Time; 3:00PM Special Dedication Service; 5:00PM Celebration Dinner at American Legion

**Tuesday January 14:** 12 Noon Sr Meal; 7:00PM Boy Scouts

**Wednesday January 15:** 1:00 Emanuel Quilters; 6:15PM Girl Scouts; 6:30PM Basket weaving; 6:30PM Bell Choir; 7:00PM PASS meeting; 7:30PM Adult Choir

ST. MARY CATHOLIC CHURCH

**Wednesday, January 8:** Moms Prayer Group (church basement) 9-10 a.m. Cub Scouts (parish center) 5:30-6:30 p.m. Altar Society Potluck (church basement) 6:30 p.m. Agape Group (parish center) 7:00-8:30 p.m.

**Friday, January 10:** Children's Choir, 3 :30-4:30 p.m.

**Sunday, January 12:** Adult Choir, 9:30 & 11:30 a.m.; Rel Ed, Pre/Kind. (church basement) 10:30 a.m.; Rel Ed, 7/8th grade (parish center) 11:45 a.m.; Stephen Group (church basement) 6:30 p.m.

**Monday, January 13:** Kof C Business Meeting, 8 p.m.

**Tuesday, January 14:** Rel Ed Grades 1-4, 3:15-4:15 p.m; Rel Ed Grades 5 & 6 (parish center) 3:30-4:30 p.m.; Faith Inquiry (church basement) 7:30 p.m.

**Wednesday, January 15:** Moms Prayer Group (church basement) 9-10 a.m.; Cub Scouts (parish center) 5:30-6:30 p.m.; BeFrienders (church basement) 7:00-9:00 p.m; Agape Group (parish center) 7:00-8:30 p.m.

SHARON UNITED METHODIST CHURCH

**Thursday, January 9:** 7:30 p.m. Council on Ministries; 8:00 p.m. Administrative Board meeting

**Monday, January 13:** 6:30 p.m. Sharin' Women will have an International Dinner at the home of Gigi Voegeding

**Wednesday, January 15:** 8:15 p.m. Chancel Choir practice.

**Thursday, January 16:** 7:30 p.m. Dorcas Fellowship will meet at the home of Rev. Peggy Paige.

OBITUARY

Gertrude I. Ahrens

Gertrude I. Ahrens, 90, of Manchester passed away on January 1, 1997. Gertrude was born in Sharon Township on October 10, 1906, the daughter of Ernest and Pearl (Roller) Raymond. In 1929 she was married to William M. Ahrens and he preceded her in death in 1971. Gertrude was a member of Sharon United Methodist Church and was active in the Arbeiter Society. She was a past member of the Bridge-water Extension.

She is survived by: her son Lloyd (Irene) Ahrens of Jackson; daughter Wilma (William) Frey of Manchester; seven Grandchildren and six Great grandchildren.

She was also preceded in death by: a son Robert, five grandchildren, a brother Leon and sister Leota.

The Ahrens family received callers at the Jenter-Braun Funeral Home on Friday, January 3. Funeral services were held on Saturday January 4, 1997 at 11 AM with interment in Rowe's Corner Cemetery. In lieu of flowers memorials may be made to Sharon United Methodist Church.

ST JOHN'S UCC, ROGERS CORNERS

**Wednesday, January 8:** 6:30 PM Bible Study/Potluck Dinner

**Sunday, January 12:** 9:30 AM Worship Service



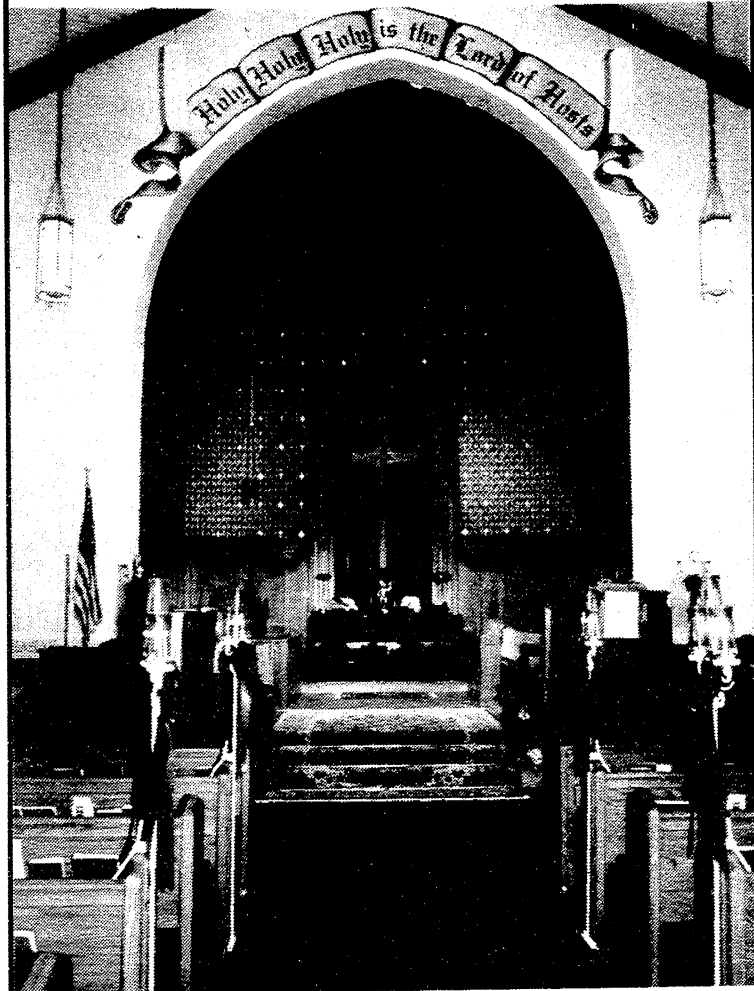
THE CHURCH PAGE IS BROUGHT TO YOU BY THE FOLLOWING SPONSORS:

Luke & Barb Schaible	DAN'S WESTSIDE AUTOMOTIVE	Manchester Plastics	WACKER'S GENERAL STORE	Gene DeRossett
Pilot Metal Products A Division of Pilot Industries	ALBER ORCHARDS	Dr. Charles Lyon, D.O.	MANCHESTER CAR WASH	MANCHESTER TOOL & DIE
David Chartrand	Norm & Olga Walz	MAID IN AMERICA®	HENDLEY & DATSKO, P.C. Attorneys at Law	Manchester Chiropractic Clinic
Clark & Penny Getty	S-K Sales, Inc.	KLEINSCHMIDT True Value Hardware	HAROLD BUSS	PAUL & MICHELE KLUWE
MANCHESTER KIWANIS	MANCHESTER MANOR	THE MANCHESTER ENTERPRISE	GENE & GERTRUDE SMITH PINNACLE ENGINEERING	HAARER'S MEETING PLACE



# Announcements

## Emanuel Church Hosts Dedication Service



Dedication Services for the newly renovated sanctuary of Emanuel United Church of Christ will be celebrated Sunday afternoon at 3 PM. The Rev. Kent Ulery, Conference Minister of the Michigan Conference of the United Church of Christ will be preaching. Emanuel Church proudly invites the entire community to celebrate in the recent renovation of their Sanctuary. Members of the church will join together after worship to thank various contractors, sub-contractors, contributors and all members for their profound dedication to this project. Please join us for worship and participating in the latest addition to Manchester's unique history.

## SOS Community Crisis Center Seeks Volunteers: You Can Help Just by Listening

If you've been looking for a way to reach out, SOS Community Crisis Center in Ypsilanti can help you connect with others in your community.

You can help a homeless family find shelter, gather food for a hungry child, or be a listening ear for someone who needs to talk. It's a great way to learn more about your community, and we'll provide the training you need.

Contact Donna or Nicole at 485-8730 for more information.

## Food Gatherers sponsored by Manchester Family Service

for Manchester Area Families

Wednesday, January 15  
12-3 PM  
St Mary Parish Hall  
on Madison St.

## The ABCs of Caregiving

The program The ABCs: Caregiving Issues will be offered by the Alzheimer's Association, South Central Michigan Chapter, on Saturday, January 18 from 9:00 a.m. - 1:00 p.m. at the Resources for Health Office, 777 Eisenhower Parkway, Suite 307, Ann Arbor.

The program will help those caring for someone with Alzheimer's or a related dementia understand why challenging behaviors occur, develop skills for coping with difficult behaviors, and obtain information on community resources. Instructors Tom Bissonnette, MS, RN and Edward Kass, MSW of Resources for Health will tailor the program to respond to the specific needs and concerns of those attending. Registration fee of \$15.00, scholarships available. Registration is requested. Call 313/741-8200 or 800/782-6110.

## It's Girl Scout Cookie Time!



Call Huron Valley Girl Scout Council  
1-800-49-SCOUT

## INCOME TAX

PERSONAL/BUSINESS  
Preparation, Consultation,  
Advice

### MARLIN WILSON

- Degree, BS Accountancy, University of Illinois
- CPA - Illinois, Michigan
- 30+ years experience
- All returns computer checked for accuracy

115 W. Main  
Call for appt.  
313-428-7542

## ORTHODONTIST

RAYMOND P.  
HOWE D.D.S., M.S.

515 S. Main Street  
Chelsea

18 years experience  
no referral necessary

475-2260



## The Manchester Jaycees are coming back!

Do you want to have fun? Impact the Community?  
Better Yourself? Meet new People?

The Jaycees are for men and WOMEN for 21-39 and we want You to be a part of this great organization!

The Ann Arbor Jaycees is sponsoring a  
**Jaycee Social at Haarer's Restaurant**  
**Thursday, January 16, 1997 at 7:30 pm**  
Refreshments and hors d'oeuvres served No Charge  
Come out and join us and learn what it's all about!

If you have any questions, contact,  
Teri Marshall, President, Ann Arbor Jaycees,  
313-482-5451.

★ 517-265-3055 ★  
24 Hour Movie Hotline  
**ADRIAN CINEMA 6**  
3150 N. Adrian Hwy  
Jan 10 - 16

Shows Before 6PM \$3.50  
\*Free refill Pop & Popcorn Same Day Only \*  
Free Listening Devices for the Hearing Impaired\*

### MICHAEL PG

DAILY 4:20, 7:30, 9:45  
SAT & SUN 1:40, 4:20, 7:30, 9:45

### TURBULENCE R

DAILY 4:30, 7:15, 9:45  
SAT & SUN 1:15, 4:30, 7:15, 9:45

### JERRY MAGUIRE R

DAILY 4:15, 7:00, 9:40  
SAT & SUN 1:30, 4:15, 7:00, 9:40

### SCREAM R

DAILY 4:45, 7:20, 9:50  
SAT & SUN 1:45, 4:45, 7:20, 9:50

### 101 DALMATIANS G

DAILY 5:00, 7:15, 9:30  
SAT & SUN 12:30, 2:45, 5:00, 7:15, 9:30

### ONE FINE DAY PG

DAILY 4:40, 7:10, 9:20  
SAT & SUN 1:20, 4:40, 7:10, 9:20

## New bulbs, New product line

## TROPICAL EFFECTS

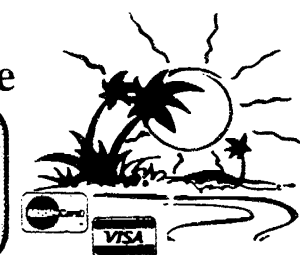
Tanning Salon

428-8323

Walk-ins Welcome

M+W 10-1, 2-8,  
T+TH 2-8, Fri 10-1,  
2-6, Sat 8-noon,  
Closed Sun.

20436 E. Austin



Vacation Packages • Cruises  
Airline Tickets • Hotel  
Corporate Travel • Car Rentals

## Prestige Travel Services

Sandy Alber -  
Travel Consultant



Fax: (313) 428-8873  
Phone: (313) 428-8838 or  
1-800-937-3494 ext. 824

# Play Ball!

## Time to Sign Up for Baseball

The Manchester Little League Baseball Association began distributing forms for registration this week in the area schools. Your children will or should be bringing them home for you to fill out. If they have forgotten you will find them in the school lobbies, and at various locations throughout Manchester. You might try Comerica Bank, Great Lakes Bancorp, First of America, Chapter & Verse and The Enterprise.

As you may remember, new officers were elected last year, at the end of the season. With a new regime comes new ideas, along with the "old." It is hoped that a good time will be had by all. Some of the changes are in the area of registration.

This year February 15th is the deadline for mail in applications. Be sure to in-

clude (1) a completed application, (2) a copy (Xerox) of the child's birth certificate, (3) the appropriate fees applicable for the particular league in which your child is to participate.

We are giving you one more opportunity to register, in case you forget. This will be in person only, and will be considered a late registration costing an additional \$20.00. We will accept your application on February 22, in Manchester High School, between 9 AM and 12 Noon. Be sure to bring a copy of your child's birth certificate, (Xerox), a completed application and the fees applicable including the late fee.

It is hoped that the need for late registration of any kind, for any reason, will be minimal since it is very hard on league officials to stand

fast on the registration deadline and have to say "no" to deserving children who want to be part of Little League Baseball. In fairness to the vast majority, who register on time, it is paramount that the deadlines be maintained. To not establish enrollment cut-off dates invite chaos. With over 400 children, organizing teams, purchasing equipment and uniforms, setting up schedules, finding and training umpires, scheduling diamonds, obtaining coaching staff, finding sponsors there is a lot to be accomplished before the first "Play Ball" is uttered this Spring!

No registration will be accepted after February 22, 1997, except that of children who have moved into the Manchester School District after that date. They will be

accepted on a space available basis.

Since we are a League created for all children to have the opportunity to play organized baseball, we know there are children whose parents can't quite swing the fees. No one is to be left out; we have scholarships available to anyone who will take the time to fill out the form requesting a scholarship. These forms are also available in the lobby of the schools, or from one of our Board Members. This matter will be handled in strictest confidence between the applicant and the league president. Please call Doreen Birnie, President, (517) 456-4962 if you have any question or desire an application.

Second, most of our participants, whether players or bleacher creatures are good sports, but occasionally we have someone who voices an opinion that is not constructive or "Heckles." Heckling is not allowed either from the dugouts or the stands. Don't be surprised if you are told to cease or leave by the officials. Remember our children will be there to learn by example as well as deed.

On April 8th we will hold a League Orientation Night. You should have received notice regarding team placement, the coach's name, and phone number. We will take this time to introduce all the Board Members and Coaches that have generously volunteered their time to help make Manchester Little League a reality. At that time we will explain league philosophy and goals plus give you an opportunity to ask questions, or offer suggestions.

Parents will receive handouts about the league, learn about the booster club, and have an opportunity to volunteer for various activities. Some things we hope to see this year will be a M.O.B., (Mothers of Baseball), sponsored flower sale in May. Watch for this one around Mothers Day, and help beautify Manchester...and support Baseball...by buying flowers for your garden then.

Concurrently with the flowersale, the M.O.B. hopes to offer a collection of outgrown sports equipment to be sold at bargain prices to other young baseball aspirants. Youngsters who have outgrown their ball shoes or have a spare, slightly small and worn ball glove may want to bring their old, unused,

but still serviceable equipment and "trade up" for something fitting their current age such as a bat with a tad more length.

The highly successful Family Night at the Ball Park will be done again, an inaugural event everyone enjoyed this past season.

A trip to Toledo, to take part in Little League Night at The Mudhens, will happen too. This is the third trip for our Little Leaguers and their families and is a real bargain for everyone, not to mention the good time all have before the game, "tailgating" (in the family sense) in the parking lot before the game.

This year our League is holding a Coaches Clinic. It will be taught by Youth Sports Institute, from Michigan State University and an invitation is being extended to our surrounding leagues to participate also. All you coach "Wanna Be's" watch for notice about this, we may have some room for you too. So we have a full season ahead, and a fun one.

Manchester Little League has been and continues to be a non profit organization. We depend on donations from various sponsors, and the hard work of many volunteers. Since we are made up completely of volunteers, that means no one receives any compensation for the work, at least no monetary compensation. The rewards we get can't be compared to money. You can also earn this great feeling by being a volunteer. Be a coach, umpire, assistant coach. Help with practice, work in the refreshment stand when it's there, lick envelopes, make phone calls - no job is too small or helper less important. It takes many cogs to make the wheel turn and as we grow the wheel keeps getting bigger.

We hope with the League's growth you see improvement. Please feel free to contact any Board Member with suggestions or constructive criticism, or better yet volunteer if you feel that you can help bring about a specific improvement that is of special interest to you.

Join us on Monday, January 13th, at 7:00 PM in the High School Media Center, for our first Board Meeting of the new year. . . 'cause we're gettin' ready to play Baseball!

Doreen Birnie

### MANCHESTER LITTLE LEAGUE REGISTRATION - 1997

1996 Team Name: \_\_\_\_\_

Willing to  
"Move Up"

Scholarships are available upon request. Forms in schools or call, (517) 456-4962

Player Name: \_\_\_\_\_  
Address: \_\_\_\_\_  
Age as of August 1, 1997 \_\_\_\_\_ Date of Birth: \_\_\_\_\_ Grade: \_\_\_\_\_  
Parent or Guardian: \_\_\_\_\_  
Address: \_\_\_\_\_  
Home Phone: \_\_\_\_\_ Work Phone: \_\_\_\_\_  
Best time to contact: \_\_\_\_\_  
Emergency Contact: \_\_\_\_\_  
Emergency Phone: \_\_\_\_\_ Relationship: \_\_\_\_\_

PARENTS PLEASE COMPLETE SECTION OF FORM PERTAINING TO THE LEAGUE IN WHICH YOUR CHILD WISHES TO PLAY. CIRCLE LEAGUE AND UNIFORM SIZE:

AGE	LEAGUE	UNIFORM	COST
4-5 or 6-7	Pee-Wee T-Ball CO-ED Coach Pitch	Shirt Size- S / M / L / XL ( T-Shirt and Hat )	\$15.00
7-10 or 8-10	Girls Softball Boys Minors	Shirt Size- S / M / L / XL ( T-Shirt and Hat )	\$25.00
11-12 or 11-12	Boys Majors Girls Majors	Shirt Size- Adult S / M / L / XL Pant Size - S(28/30), M(32/34) L(36/38), XL(40/42)	\$40.00
13-14 or 13-14	Sandy Koufax Girls Seniors	Shirt Size- Adult S / M / L / XL Pant Size - S(28/30), M(32/34) L(36/38), XL(40/42)	\$60.00
15-16	Mickey Mantle	Shirt Size- Adult S / M / L / XL Pant Size - S(28/30), M(32/34) L(36/38), XL(40/42)	\$75.00

Availability subject to interest

Registration Deadline by mail is February 15. You may register in person on Saturday, February 22 at the High School, between the hours of 9 am and 12 noon, an additional \$20.00 late fee will be payable at that time. Mail check and copy of birth certificate to:

Manchester Little League Association

P.O. Box 651

Manchester, Michigan 48158

Office Use Only:

Birth Certificate \_\_\_\_\_ Amount Paid \_\_\_\_\_ Late Fee \_\_\_\_\_ Scholarship \_\_\_\_\_





*The AM Kindergartners anxiously awaiting the bus ride from Nellie Ackerson the old ...*



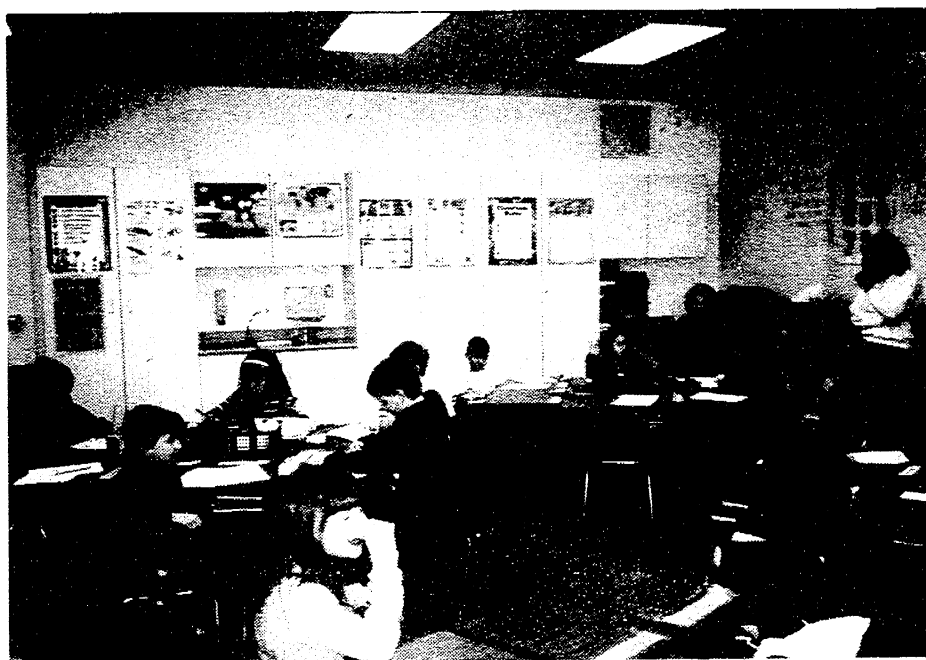
*Mrs. Coelius with her class take a tour of the new addition at Klager.*



*to Klager the new.... The students and Teachers alike were very anxious to get to their new rooms Monday.*



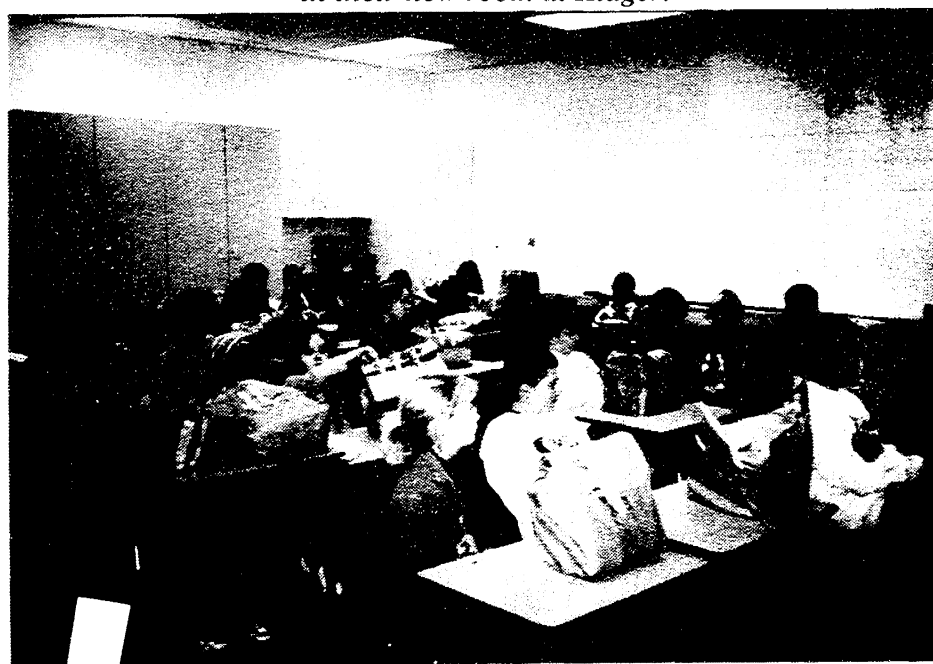
*Ms. Rose's second graders enjoying the new gym facility!*



*Mrs. Fielder's second graders feeling right at home in their new room at Klager.*



*Kindergartners searching for their desk in the new K rooms.*



*Mr s fourth graders ready to unpack the coontents of their desks in Mr. K's new room.*



**David Andrew Conzelmann**

Tom and Linda Conzelmann announce the birth of their son, David Andrew, on December 23. David weighed 8 pounds, 3 ounces, and was 19" long at birth. David joins his big brothers, Johnathan and Matthew, at home.

Grandparents are Tom and Mary Prining and Tom and Judie Conzelmann, all of Frankenmuth. Maternal great-grandparents are Ernest and Glenna Wilcox and Russel Prining, all of Sarasota, Florida. Paternal great grandparents are Charlotte Struck and Helmuth and Alice Conzelmann, all of Frankenmuth.

**Winners at the Pharmacy**



Winners of the Pharmacy's Christmas promotions were (left) Katharine Nickerson, who won the large white bear, and (right) Sarah Wootke, who won the Hallmark Bear. Congratulations!

**4-H Recognizes Manchester Leaders**




Sharon Haeussler and Elaine Feldkamp, both of Manchester, received their twenty-year service pin and certificate, for twenty years of volunteer leadership to the 4-H Youth Programs at the recent Washtenaw County 4-H Recognition program on November 16, 1996. Joe Yekulis, County Commissioner, was on hand to present their awards.

**Quite A Sight**

A Dutchman was explaining the red, white, and blue flag of the Netherlands to an American friend.

"Our flag is symbolic of our taxes," the Dutchman said. "We get red when we talk about them, white when we get our tax bill and blue after we pay them."

The American nodded. "I know what you mean. It's the same in the United States - only we see stars, too."



James C. Schneider  
Owner

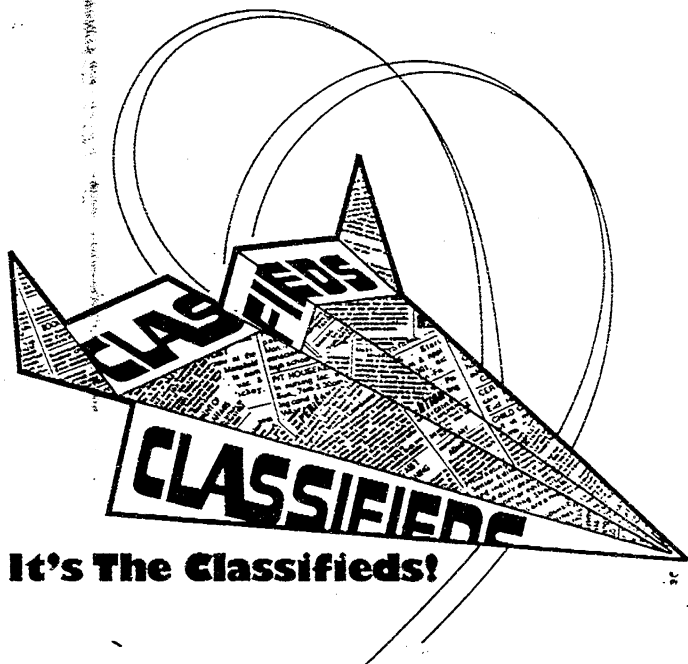
**Schneider J.C.S. Service**

Sales & Rental Janitorial Equipment & Machines  
Janitorial Service • Carpet Clearing

428-1880 Business  
428-1070 Residence

146 E. Main Street  
Manchester, MI 48158

**For High Flying Results..**



**It's The Classifieds!**

**The Manchester Enterprise**  
428-8173

**LUXOTICA**   
eyewear.



Let them see you.

**Manchester Eye Care Center, P.C.**

**Julie A. Marvin-Manders, O.D.**

**110 Riverside Dr.**  
**428-2020**

Mon 10-7, Tue 9-4, Wed & Thurs 8 - 5  
Most Sat 9 - 12

*New Patients Welcome*  
*Most Insurances Accepted*

# MANCHESTER AREA SENIOR CITIZENS News

by T.V. Ludwick

This gloomy weather which goes on day after day without the sunshine is quite depressing. At least it's warmer than the 2 above we had back a spell. Then, you turn on the television and see how the poor folks in Washington, Oregon and points west are coping with not just weepy weather, but it's 'up to here' some place, or taking your house down a mud slide!

Daughter Janet sent a clipping from the Cronicle in the western part of the state with caption, 'Buried up to its headlights, a truck plows J. C. Penney's parking lot at Henry Street and Norton Avenue Thursday morning (Dec. 26). The area was blanketed by 9-12 inches of snow since Christmas eve, but weather forecasters are calling for temperatures in the mid-40s Saturday.' We will complain about the weather, tho, even if its better than fog or a sheet of ice (or all that snow.)

**Thursday, January 9:** What a neat idea for our January Birthday bash menu: Sauerkraut in a casserole! That is today's menu for senior lunch at Emanuel UCC in the dining room. It begins at 12 noon and if you have a birthday this month and are 55 or older, give Sharman a ring at 428-8359 ahead or call Jan at 428-7630 before 10:30 and make reservations to attend this special meal. These meals that Jan Barbour and Company cook and are served to us lucky seniors should be enjoyed by each of our area's

senior citizens. You may enjoy bingo at the Center following the Thursday meals.

**Friday, January 10:** The senior bus will begin pickup to go to the Saline Senior Citizens Card Party at 6 PM. Call Marion Ahrens at 428-7865 for your place on the bus.

**Tuesday, January 14:** Council meeting is called for 9:30 AM and you are invited to come to the Center and put in your 'two cents worth,' as ideas are always needed to make our Council better. Then, to Emanuel Fellowship Hall for Chicken Some Way! I won't even bother to guess what that means, just so it isn't flying!

**Wednesday, January 15:** Today seniors will visit the Jiffy Mix plant in Chelsea and be taken on a tour. There will be a 9 AM pickup by senior bus to go. This is a favorite and you must call Marion to be put on the list.

**Thursday, January 16:** Today is another of our cook's tricky world tours with food. She calls it Italian Day at 12 noon at lunch time. You may ask "What are we eating today?" And you may let the 'grumpies' o'ertake you and answer, "How would I know, something Italian." An Italian Day with Jan and crew is always something to shout about, Olé! That is Spanish, I know. Come to play bingo at the Center at 12:30.

The January-February Trumpeter has been put to bed. You may pick up your copy at senior meals or at the Center when it is open.

**HOMEOWNERS!** STOP  
living from paycheck to paycheck!  
**LOANS BY PHONE**  
**SAME DAY APPROVAL!**  
Lansing: 1-517-886-0101 Statewide: 1-800-718-3738  
AAA MORTGAGE & FINANCIAL CORPORATION

## NEW & USED CAR SALES

Stop in

Take advantage  
of the rebates on  
model year-end  
Clearance Prices!



Neil Horning  
475-1301

THE AWARD WINNING DEALER  
**PALMER**  
Michigan's Oldest Ford Dealer

FORD  
MERCURY

OPPORTUNITIES  
FOR GIVING  
.....

YOUR  
**Will**  
IS A WAY  
TO CONQUER  
LUNG DISEASE

† AMERICAN  
LUNG  
ASSOCIATION.  
of Michigan  
(800) LUNG-USA

**UNIGLOBE**

Chelsea Travel, Inc.

1070 South Main Street  
Chelsea, MI 48118  
(313) 475-3110  
(800) 875-3113  
FAX (313) 475-3748

INDEPENDENTLY OWNED  
Means Better Personal Service  
Through more than 1100 locations worldwide.

**Deborah  
Engelbert**

Real Estate Sales Associate  
The Charles Reinhart Co.



30 Million In Sales!

Office: 313-971-6070  
Direct: 313-669-5897  
Res: 313-475-8303  
Fax: 313-747-7880

2452 East Stadium Blvd.  
Ann Arbor, MI 48104

**Reinhart**

Charles Reinhart Company Realtors

## Kirk Excavating

Sand - Gravel - Fill Dirt  
Basements - Driveways

Licensed & Insured  
**428-7938**

Dave Kirk  
14180 Schleweis Road  
Manchester

## Nancy's Herb Pantry

Manchester Mill  
Manchester, MI

✦ Herbs and Vitamins  
✦ Kinesiology consultant

Wed - Fri 12 - 5  
Sat 10 - 4

(313) 428-7621

## CLINTON FOOT & ANKLE CLINIC

301 W. michigan Ave. • Clinton, MI  
**517-456-4114**

Offering complete foot and ankle care for the  
entire family.  
-Specializing in-

Reconstructive Surgery  
Sports Injury  
Infant and Child Disorders  
Diabetic Care  
Foot and Ankle Injuries  
Heel Pain  
Foot Pain  
Hammertoes

Laser Surgery  
Warts  
Ingrown Nails  
Fungus  
Nerve Pain  
Skin Problems  
Bunions  
Calluses

Orthotics (Custom Casted Shoe Inserts)

**DAVID R. LEVITSKY, D.P.M.**

Board Certified Surgeon

Member of: American Podiatric Medical Association  
Michigan Podiatric Medical Association

Hours: Tuesday/Fridays 10:00 - 5:00 p.m.

Saturdays 10:00-12:00

Please call for appointment - Most insurances accepted

# GUN SHOW

Saturday, January 11th 9am - 5pm

Sunday, January 12th 9am - 4pm

Washtenaw Farm Council Grounds

5055 Saline-Ann Arbor Rd.

For more information

Call **810-227-1637**



## School Meals

We serve education every day

### Menu Subject to Change Without Notice

**Monday, January 13:**  
Chicken patty on a bun; french fries; carrot sticks; dill spears; peach halves; milk

**Tuesday, January 14:**  
Breakfast for lunch - French toast sticks; sausage; mandarin oranges; danish; milk

**Wednesday, January 15:**  
Spaghetti w/meat sauce; broccoli spears; bread stick; vanilla ice cream; milk

**Thursday, January 16:**  
Soft Shell Tacos; chips; corn; fruit roll up; milk

**Friday, January 17:** Half day, no lunch

## School Calendar 1997

**January 6** School Resumes

**January 15-17** Semester Exams, MHS out at noon

**January 17** End of first semester K-12 students -AM; Teachers - full day

**January 20** Second Semester Begins

**February 14** Mid Winter Break No SCHOOL

**March 21** End of Marking Period

**March 26** K-12 Parent/Teacher Conferences 5:00-8:00 PM; K-12 Students full day

**March 27** K-12 Parent/Teacher Conferences, 8-12 AM; 1:00-3:30 PM No School

**March 28** Spring Break Begins

**April 7** School resumes

**May 3** MHS Junior/Senior Prom

**May 26** Memorial Day No School

**June 5, 6, 9**, Senior Exams

**June 9** End of Second Semester, K-12 Students AM; Teachers Full Day

## Faist-Morrow

the Place to Go  
for a New or  
Used Vehicle

"Where the  
**QUALITY**  
Used Cars  
Are"

1500 S. Main St.  
Chelsea  
475-8663

## School

### January Honors School Board Members as Education's Champion

Over 4,200 men and women serve Michigan communities as school board members. This January, as a part of *School Board Recognition Month*, the Manchester Community Schools are joining with other school districts across Michigan - and the nation - to build awareness and understanding of the vital function elected school boards play in our society.

Each year a school board member contributes hundreds of hours in school-related meetings setting priorities for school budgets and speaking out for the best interests of all children.

The men and women serving Manchester Community Schools are:

Paul Kluwe, President  
Joe Turk, Vice President  
Bruce Abbott, Secretary  
Wayne Winzenz, Treasurer  
Marilyn Knouase, Trustee  
John Ochs, Trustee  
Pat Sahakian, Trustee

As you see the above individuals in and around our community take the time to acknowledge the time and dedication that they provide in the interest of our children.

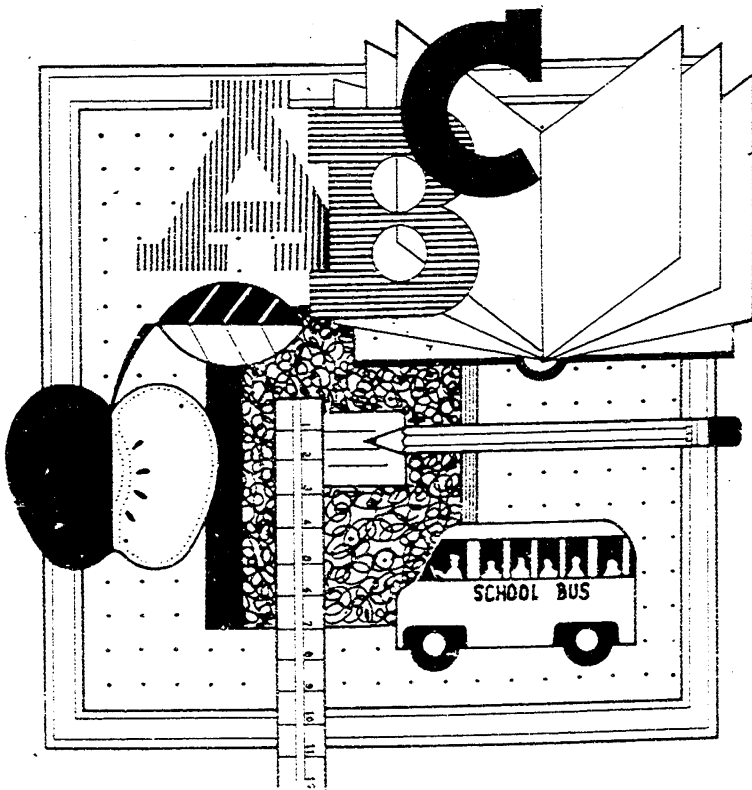
### Financial Aid Program Available at High School

Each year Grand Valley State University provides Manchester High School with a free computer program called SNAP (Student Need Advisory Program). This easy to use program will calculate accurately what a family will be expected to pay for a year of college for their son or daughter. This program follows the free financial aid form. SNAP takes 20-30 minutes to run and requires no previous computer experience. It runs on an IBM or IBM Compatible computer. SNAP can be used at the high school or signed out and used at home or at work.

SNAP is a very valuable tool in helping parents plan for financing their student's college education. It is especially recommended for parents of seniors who are not sure whether they want to fill out financial aid forms for next year. For these parents it will tell them whether or not completing financial aid forms will be beneficial. It can also be used by parents of seniors who definitely plan to fill out financial aid forms but would like to have a head start in planning the process and finding out where they stand financially. A third group of parents who could benefit from SNAP is parents of underclassmen who are planning for the future and trying to learn how they can help meet the ever-increasing costs of attending college.

Please call the guidance office (428-8274) to use or sign out SNAP or to find out more information about it.

**Shop Locally It  
Will SAVE  
You \$\$\$**



P. ositive  
A. ccommodations  
S. timulate  
S. uccess

### SIGN LANGUAGE INSTEAD OF SPANISH or GERMAN?

Recently I had the opportunity to hear a teacher of the deaf speak about sign language and how helpful learning sign language was in enabling deaf people to be live normal lives. She told a story of how she saw a deaf person on a street corner one day begging for money. She starting talking to this person in sign language giving the person encouragement that they had all of the skills they needed to go out into the world and earn a living.

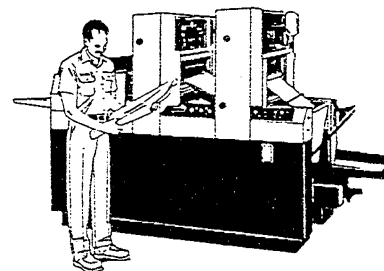
I was struck by two thoughts; first, how powerful sign language was - without spoken or written words people can have a conversation, and second, what if a deaf person came to work with me - could I make this person feel like a colleague? Does sign language really help these people communicate in our world? What if a deaf student wanted to attend school in Manchester? Who would communicate with this student in sign language?

Then I thought of all of the people with learning differences who have such difficulty with written words (for example, with dyslexia) and even with spoken

words (for example with auditory processing problems). Maybe learning to sign letter and words would actually help them learn English? Would sign language be a good option for these students? Currently so few people know sign language that knowing sign language isn't really an advantage. However, taking sign language may be an excellent choice for these students as a second language. The ability of many of these people to master Spanish, German or any other second language is not good since learning to read and write English has been difficult. Sign language may be an excellent choice for a second language for these students.

Maybe as a community we should consider making this a signing community. If you are interested in learning sign language, ask your family and friends how many of them are also interested. We could learn and practice together and make our community a friendly place for the deaf. If there is enough interest, maybe we could make this happen. Call us at P.A.S.S. at 428-0738 and leave us a message.

## THE MANCHESTER ENTERPRISE



• PRINTING  
• PHOTOCOPIES  
• MORE!  
SUPPORT YOUR  
HOMETOWN  
PAPER!

109 E. MAIN ST. • MANCHESTER

**(313) 428-8173**

## McLennan Landscape

A personalized professional service

- Design Consultation
- Plant Installation
- Retaining Walls
- Wild Flowers
- Finish Grading
- Shade Gardening
- Hydro Seeding
- Brick Pathways

**(313) 428-7005**

## Manchester Wrestling

Well, before I knew it we were back at it for another year of wrestling. It really snuck up on me, that's probably why I'm a couple of weeks behind.

With just a handful of experienced wrestlers coming back, we knew it was going to be a rebuilding year. Two seniors, a junior and two sophomores returned with mat experience. The good thing about all of this is that it gives the 11 freshmen who came out plenty of mat time; so in a couple of years we'll be back in the hunt for our first league title in over 20 years.

As always, our first destination would be the Concord Invitational where we finished in 13th place out of 16 teams. Not the greatest but respectable for having such a young team. Freshman Jeremiah Tobias and Senior Ed Cruz were our only medalers; both bringing home third place. Sophomore Ted Roberts was one match away from placing as well as Junior Jeremy Smith. Freshman Matt Horodeczny was also a winner in a match.

Things wouldn't get much better as we faced two experienced teams, Clinton and Columbia Central. In the first meet we lost 44-24 to Clinton with Jeremy Smith, Jeremiah Tobias, Dave Herman and Ed Cruz being the victors. Both of Jeremiah and Ed's wins came against regional qualifiers. Against Columbia Central we got whipped good, the score reading 56-23. Ted Roberts got us going with a first period win, followed by Jeremiah, Ed, and Dave Herman collecting wins.

Going into Jaws we knew we would have to wrestle tough to come out of it with some wins. Our kids responded by getting two victories out of five dual meets. Ted finished with three wins, Mike Heskett had two wins, Jeremy Smith had three. Jeremiah was our only undefeated wrestler with five wins. Jordan Wahl and Matt Horodeczny did a nice job collecting two wins. Ed Cruz had a great day even though losing a tough match to a kid who took third in State last year by a score of 3-0.

Ed's other four wins were impressive. Dave Herman collected his first three pins of the year also. Many of our young kids got mat time even though they didn't win. I would like to mention them for the hard work they've put in so far this year: Ryan Witcher, Pete Dettling, Tyler Breilein, Matt Jones, Joe Shurtliff and Zach Morris. These guys are definitely going to be our future.

Over our break we had a lot of time to work on a lot of things which we really needed. Our JV's traveled to Columbia Central here we went 1-3 for the day. Ryan Witcher won three out of four matches with two pins, Ted Roberts & Mike Heskett went undefeated, Jordan Wahl and Matt Horodeczny won two matches each, and Dave Herman won three.

In our tri-meet with Bath and Vandercook Lake we raised our season record to 4-5 with a blowout against Bath, the score reading 52-12. The biggest win was Ed Cruz' against an undefeated wrestler. Next came Vandercook Lake which was a good dual as we squeaked one out, the score reading 43-28. The real highlight of this match was both Zach Morris and Matt Laskowski picked up the first wins of their career.

Hudson was our first home meet as they came in and really took it to us. We only managed nine points compared to the 62 that they scored. Ted Roberts won an exciting overtime match 7-5 and Jeremiah Tobias ran his season record to 14-1.

After the holidays were over our team received good news: Senior Steve Spurr, our returning State runner-up, and Sophomore Nolan Westcott would be returning from the injury list to strengthen our team.

Out of 12 teams at Morenci we finished respectable 6th, with three medals. Both Jeremiah and Steve pinned their way through the finals. This first place was Jeremiah's first Bulldog Title while this was an impressive fourth time for Steve, who is glad to be back on the mat. Ed brought home his second third place medal of the year, his only loss coming to a State placer in a hard fought 14-9 match. This raises his season record to 16-4. Other winners Saturday were Dave Herman and Jeremy Smith, who were only one match away from a medal.

Our next action is against East Jackson on Wednesday, January 8. Wrestling will begin at 6:30 at East Jackson. Then we travel to Clinton on Saturday, January 11, which will begin at 10:00 AM. Hope to see you there to cheer on our young, but hard-working team.

- Coach Vlcek

**Warwick David  
Armstrong,  
Ph.D.**

**Licensed Psychologist  
Licensed Marriage  
Counselor**

**Office Hours by  
Appointment  
428-0456**



## Sports

### Wrestlers Ready for Another Year



Front, L-R: Jeremy Smith, Jeremiah Tobias, Ryan Witcher, Ted Roberts, Mike Heskett  
Middle, L-R: Pete Dettling, Steve Spurr, Matt Horodeczny, Matt Jones, Tyler Breilein  
Back, Left To Right: Asst Coach Mike Bunn, Zach Morris, Matt Laskowski, Joe Shurtliff, Ed Cruz,  
Dave Herman, Coach Steve Vlcek.

### Volleyball Begins Season

#### Varsity Volleyball makes Semi-Finals at Western

Saturday, December 21st, our Lady Dutch woke up bright and early and traveled to Western High School to participate in yet another tournament. The ladies lost in the semi-finals to Mason High School after playing a long day against four other schools.

In the first match-up, the team split with Northwest 15-10 and 0-15. The next game, against Onsted was also split, 18-16 and 12-15.

Stockbridge proved to be a better game, our girls winning both times (16-14, 15-6). In the last game of the pool the girls were one for two with 15-10 and 14-16 against Weseley.

The teammates were exhausted as they entered the semi-finals playing Mason's Varsity team and losing 8-15 and 5-15. Team leaders were Jessica Porter with 22 points and 17 kills, Michelle Schaible (20 points, 46 digs, 24 kills), Pam Preston with 51 assists, and Mary Barrett with 3 solo blocks and 1 assisting block. Good going girls, with a job well earned!

#### Volleyball Plays Hard Over Winter Vacation

Two days after Christmas the Varsity Lady Dutch traveled to Bedford to play in another early morning tournament. The first competition was with Bedford who kept the Dutch down 1-15 and 4-15. Next the girls defeated Kestral in the first match (15-9), but fell 8-15 in the second.

Dundee was the 3rd team to go up against the Dutch, losing 15-0 and 15-10. Just when the ladies seemed to be back and get out of the pool, Monroe Varsity shut the doors, taking both matches 9-15 and 14-16. Jessica Porter led the Dutch with 18 points and 3 aces.

Other top performers include Sarah Gould (14 points, 3 aces), Mary Barrett (8 points, 1 ace, 3 solo blocks, and 4 assisting blocks, 15 kills), Michelle Schaible (11 service points, 3 aces, and 11 kills), and Pam Preston with 24 assists. Nice job girls and good luck on January 4th at the Saline Invitational!

### MHS Varsity Volleyball



Front Row, L-R: Stefanie Schulz, Pam Preston, Carmen Kapa  
Middle Row, L-R: Sarah Gould, Jennifer Mann, Karen Goodell  
Back Row, L-R: Asst. Coach Doug Meeks, Jessica Porter, Stacy Mann, Kelly Parr, Michelle Schaible;  
Coach Vanessa May. Not pictured: Managers, Jennifer Schulz & Katie Meranuck



# Classified

## Services

**Lost or Found a Pet?** Call the Huron Valley Humane Society. 662-5585. tfn

**Fielder Painting:** Interior and exterior. Free estimates. Senior citizen discount. Phone 428-8506 tfn

**Farmers' Sand and Gravel.**  
We deliver and spread driveways. 475-8850 tfn

**Benedict Painting:** Call Chuck for free estimates. 15 years experience - interior & exterior painting. 517-536-4812 tfn

**Alber Excavating - Sand - Gravel, basements, drainfields, topsoil, snow removal.** 428-0865 tfn

**Stump Grinding & Tree Removal** Garden rototilling - Free estimates. Insured. **R & L Tree Service** 428-1675 Rich & Russ Lutton tfn



**PREMIER CONTRACTING,** Full service residential and light commercial builder. 428-9826. tfn

**Topsoil, black dirt, sand, stone, gravel, fill dirt.** Phone 313-475-8526. 1/6/97

**Aiuto Auto Parts - Tecumseh.** We do small engine repair. Get your snowblower tuned up for the '96/'97 season. Pick-up and delivery available (517) 423-8080 TFN

**Manchester Electric, Inc.** Contracting & In-home service 428-8243. TFN

**Snow Removal - Parking lots, driveways, sidewalks, salting.** Insured. Call T & N Services, Inc. 428-7002. 1/9

### Keith's Barber Shop

Two Barbers. Tues. Wed. Fri. 7:30-5. Thurs. 7:30-4 Sat. 7-Noon. Closed Mondays. 428-8584 eow

## Day/Child Care

Opening for one child in my village home. Warm, family atmosphere. License #DF810067266 - Anne Kastanis. 428-9806 TFN

## Help Wanted

**Third shift, premium pay.** Hop-In. 10pm - 6am. Health Insurance, 401K, Tuition reimbursement, employee incentive program. Apply in person at Hop-In 100 E. Main. TFN

**Dental Assistant** wanted to join our friendly practice. 428-9019. TFN

### Layout Artist

We are a quality book manufacturer seeking ambitious, responsible people to work in our PrePress Department on the afternoon shift. Experience as a layout artist is certainly a plus but we are willing to train the right detail oriented candidate. We have a competitive compensation and full benefit package including medical/dental/vision/life insurance and a 401(k) savings plan. In addition, through our generous Employee Stock Ownership plan, you will become a company owner and share in company profits. Please apply in person or send a resume to Human Resources:

**Braun-Brumfield, Inc.**

100 N. Staebler

P.O. Box 1203

Ann Arbor, MI 48106

A smoke free work environment  
EOE 1/28

### G.E. Wacker, Inc.

is

### Now Hiring!

We are looking for a person(s) that are dependable; responsible; willing to work in a non-smoking environment; will be able to work some weekends and evenings; must like working with the public; & would enjoy a job with a lot of variety.

### There are openings for full and part time counter & stock positions.

Benefits for full time Employment include: Medical, Dental, & Accidental Disability Insurance; 401K Retirement Plan; Vacation; Paid Holiday's & Many other Extra's!

Apply in person at our office (Corner of M-52 & Pleasant Lake, Manchester) before 5 PM. Weekdays. 1-800-535-5949 1/16

### Babysitter Needed

Twice a Month on weekend nights. Call 428-0871 after 6 p.m. 1/9

### Housemate Wanted:

Female, non-smoking, well behaved child or pet acceptable. Call for info. 428-9896

## For Rent

**Large ground floor 2 bedroom** \$585 includes all utilities. No smoking or pets. 428-7173. TFN

**Beautiful loft apartments.** Downtown Manchester - central air, secured building, river view, hardwood floors. 2 bedroom \$585, no pets. Call 517-431-2008. TFN

**Efficiency apartment** for rent in Manchester. Includes all utilities. Large two bedroom upstairs apartment in Clinton. Call 517-522-4064. TFN

### For Rent

**Small 1 bedroom** mobile home. Ideal for one person. \$265 per Month plus utilities, security deposit, no pets. Pleasant Lake 313-428-8646 1/9

**Apartment for Rent.** 104 E. Main. 313-428-8003 ask for Tina or Frank. One bedroom apt. \$400 per month. TFN

### For Rent

1 Bedroom Apt. in downtown no children, no pets. 428-7639

### Apt. For Rent

1 Bedroom Apt on Pleasant Lake. \$425/mth plus S.D. No pets. Aura Inn 428-7993 1/9

## Wanted to Rent

**Wanted to rent - Crop land**

Bristle Farms 313-428-0214

## CLASSIFIED RATE:

\$4.00 for the first 20 words.  
10¢ for each add'l word.  
Thank You's and Memorials are \$5.00 for the first 50 words.

Ads must be prepaid

## AD DEADLINE IS 5:00 Fridays

ADS accepted after the established deadline will be subject to a \$2.00 fee.

## Miscellaneous

**Wedding Invitations** at discount prices. Also graduation, anniversary, birth announcements. Hundreds to choose from. Express Graphics. Professional quality, affordable price. 428-1613. TFN

## Lost & Found

### Found

Baby girls Xmas gift at corner of Territorial & Schaffer Court  
Call: 428-8140

### Lost

Female Reddish Brown Vizsla Shorthair Docked tail. Reward. 428-9560 Lost 1-2-97

## Business Opportunities

Advertise your business or product on the information superhighway. Reach 50 million for pennies a day. 1-800-408-8618 ext. 1033 1/17

## Antiques

**Manchester Antique Mall:** 35 Dealers. Open 7 days 10-5. 116 E. Main. 428-9357. tfn

## OLD ORIENTAL RUGS WANTED

Any size or condition  
1-800-443-7740 1/9

## Thank You

We wish to thank everyone for their cards, flowers, visits and comforting words during the loss of our mother and grandmother, Edna Pfau. Words cannot express the love we felt from our friends and family during this most difficult time. Special thanks to Pastors Hardy, Kwiatek and Carroll for their visits and prayers. God bless you all!

**Shirley & Tom Goodman  
Rosie, Joe & Carrie Parsons  
Jean & Dave Bust  
Bill, Sharman, Jennifer, Jill,  
Cheryl and Rachel Pfau**

Thank you to all who sent me cards, for the visits and prayers, while I was in the hospital, also thank you to the Manchester Rescue Squad, Father Murray, K of C's and Al and Sue Staffeld. A special thank you to my family for all the help. God Bless you all!

Joe Kastl

## Free

Male Lab Mix pup free to a good home. Call 428-8591

## Slippery Solutions

We have sand tubes, ice melters, Halite salt, Kitty litter. Don't slip, get a grip. Atlas of Manchester 18875 W. Austin 428-7077. 1/16

## Professional Dog Grooming All Breeds

**Carol Bender**  
25 years experience  
(313) 428-1627



Your home or mine

## FUND RAISING

**Manchester Sportman Club**  
8501 Grossman Rd. • Friday 6:45 p.m.

**Manchester American Legion**  
203 South Adrian • Saturday, 6:30 p.m.

WLEN & The Christian Family Centre  
present  
The 4th Annual  
**Bridal Expo**

January 11, 1997  
1:00 - 4:00 p.m.  
at the  
Christian Family Centre  
1800 W. U.S. 223  
Adrian, MI 49221

Register to win our Grand Prize Drawing!

View displays and fashions from local business that will help make your day very special!

Door prizes for Brides & Friends of Brides.

For exhibit information contact WLEN, 263-1039

THE MANCHESTER  
**ENTERPRISE**  
Daily Gossip Where No Newspaper Has Come Before

Fire Department Trains in New Technology

Drama Club Presents: "Up the Down Staircase"

Name: \_\_\_\_\_

Address: \_\_\_\_\_

City: \_\_\_\_\_ State/Zip: \_\_\_\_\_

Phone: \_\_\_\_\_

## Read all about it!

Subscribe to  
**The Manchester Enterprise**  
- keeping up with Manchester's activities since 1867 -

109 E. Main St.  
Manchester, MI 48158  
(313) 428-8173

in Washtenaw County  
\$18  
Out of county \$20





## Manchester Area Chamber of Commerce

### A FEW THOUGHTS: January 1997

As our new year begins, we, as business owners, will be looking forward to what lies ahead of us and the challenges and rewards it will bring.

Whether it is creating a new product, increasing sales, or just spending more time with family and friends; we will all be setting some sort of goals for ourselves and/or our companies. With the use of fresh ideas and new technologies we can maintain our standards of growth and keep pace with the ever changing world. To accomplish our goals we need to have the cooperation of everyone we are involved with: employees, friends, customers, and family.

The Village of Manchester is growing at a more rapid pace every year and the Village Planning Commission is preparing for it by redrafting the zoning codes. As a business owner and a Chamber of Commerce member I am interested in knowing how I fit into this and how it is going to affect my business. My written business plan dictates that I look into the future so that I won't be caught by surprise by a sudden swing in the economy. By being a member in the Chamber of Commerce I've taken one step in guiding the future of my company. By attending the Chamber and Board meetings

I am able to get more insight into the business climate and I am able to take a more active part in the shaping of the business environment in Manchester.

Starting this month I begin my term as president of the Chamber of Commerce. The Chamber has done many new things over the last several years, most notable holding business tours for the meetings, (open to the public, by the way, as are all our meetings). We have also created the Winter Festival, now sponsor the Summer Festival, and have begun a Beautification of Manchester project. I would like to continue the Chamber's involvement in new ideas work more closely with the local organizations and the public officials of the Village so we can do things as efficiently and economically as possible for the better benefit of the people of the village and all the surrounding townships. We do control our future, but only if we take an active part in developing it. Attend a Chamber of Commerce meeting; network with the business people in this area and be a part of the future of Manchester.

If you have ideas, suggestions, or just want to talk about the Chamber please feel free to call me at 428-9259.

Jim Sprague, President  
Chamber of Commerce

### *Sula Darlene Jeffers*

ATTORNEY AT LAW  
150 E. Main Street  
P.O. Box 625  
MANCHESTER, MI 48158

(313)-428-8190

**We've moved "Up Town"**  
**to 227 E. Main Street**  
(formerly Manchester Eye Care Ctr.)

### **Jim Watson**

**Total Dental Care  
for the Entire Family**

most insurances accepted

Call 428-9019 227 E. Main St.

**Early Morning, Late Evening &  
Saturday Appointments available**

## Looking for a Higher Yield Certificate of Deposit?

Then look to United Bank & Trust.

Below \$10,000	5.50% APR	5.75% APR	6.00% APR
\$10,000 & above	5.75% APR	6.00% APR	6.25% APR

### •• No minimum balance requirements ••

"At United Bank & Trust we strive to provide our clients with quality products and services to fit their financial needs. That's why we are excited about our new CD specials. These CDs offer a higher annual percentage yield than our traditional CDs and have no minimum balance requirements. This makes them the perfect fit for many investment needs."

- Earl M. Roehm, Executive Vice President, Personal Banking  
To take advantage of this special offer, simply complete the coupon attached and mail it with your investment to:

### UNITED BANK & TRUST

ATTN: M. DeShano

11839 Tecumseh-Clinton Road  
Clinton, MI 49236

Amount Enclosed: \$ \_\_\_\_\_  
Term Requested: \_\_\_\_\_ months

Applicant Name	Date of Birth	Soc. Sec. #
Co-applicant Name(if joint)	Date of Birth	Soc. Sec. #
Street Address	City	State Zip
Home Telephone Number	Business Telephone Number	

#### AGREEMENT TO TERMS:

Under the penalties of perjury, I (we) certify that 1) the Tax Identification Number(s) on this form is (are) correct and 2) that I am (we are) not subject to backup withholdings under the Internal Revenue Code.

Applicant Signature

Co-applicant Signature

Your CD yield will be the current yield on the day we receive your check. For today's rate, or to speak to a Financial Services Representative, please call (517) 456-6048.

**Or stop by one of our near by offices:**

### **TECUMSEH LOCATIONS CLINTON OFFICE**

#### **Main Office**

205 E. Chicago Blvd.  
(517) 423-8373

11839 Tecumseh-Clinton Rd.  
(517) 456-6048

#### **Herrick Park Office**

610 N. Evans  
(517) 423-8373

#### **West Chicago Office**

1208 W. Chicago Blvd.  
(517) 423-8373

Annual percentage yield as of 1/8/97 is subject to change at any time. Interest penalty will be charged for early withdrawal. For additional information please call (517) 456-6048.

**United  
Bank & Trust**

Member FDIC

## BEANIE BUDDIE News from Calamity Jane's

Beanie Baby update: 13 New Releases and Calamity Jane's was first in line to order the day they were released. We have ordered all the new ones They are:

Snort, Bernie, Dobie, Nuts, Hippity, Hoppity, Floppity, Gracie, Snip, Fleece, Crunch, Pouch and Mel

We have also placed orders for many of the others, we hope to see a shipment within a week and the new ones shortly thereafter according to TY.

Nine babies have been retired and Calamity Jane's has also place the last order on these - They are:

Chops (sold out), Coral, Kiwi, Lefty, Righty, Liberty, Sting, Tabasco (sold out), and Tusk.

If you have a collection or just one or two, hang on to them they will become collectible in time.

Having a Beanie Buddie Birthday party - we can help by keeping a list of what Beanies you have.

We're glad to be your Beanie Baby connection right here in Manchester!

## CALAMITY JANE'S

109 E. Main  
Mon - Sat 10 - 5



Don't get disturbed... See Tirb!

For New or Used Cars  
See Charlie Dermire  
or Ray Tirb

## TIRB

Chevrolet & Geo

Phone: (313) 428-8212 or (313) 428-8492  
131 Adrian Street -Manchester, Michigan

## MANCHESTER Market

Prices good thru January 12, 1997

455 W. Main

**Boneless**  
**Beef Chuck Roast**  
\$ 1.49 lb.

**Pepsi**  
2 Liters  
99¢+Dep

**Iceburg**  
Head Lettuce  
39¢ hd.

Hours: Mon - Sat 8am to 9pm Sunday 9am to 7pm

## Sutton Insurance Agency, Inc.

136 E. Main St., Manchester, MI 48158

Manchester's  
Independent Agency

AUTO • HOME • FARM • LIFE  
HEALTH • DISABILITY

"We Take Pride In Our High Level Of Quality Service"

M-T-W-F 9 - 4:30, Th 9 - noon Appointments Also to Fit Your Schedule  
Specializing in LIFE INSURANCE TO FIT YOUR NEEDS

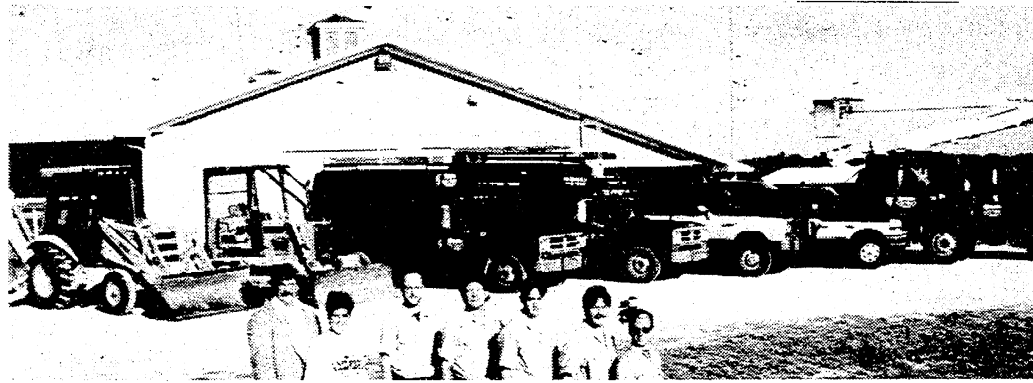
428-9737

## STEIN ELECTRIC COMPANY, INC.

Licensed & Insured Contractor 24 Hour Emergency Service  
Motor Controls & Lighting

Ag. • Commercial Industrial • Institutional Residential • Backhoe  
& Trenching Services 50 ft. Bucket Truck

Rick Graustein • Manchester, MI • 313-428-9050



## Manchester Floors

Mon 10-7, Tues-Fri 10-5:30, Sat 10-3  
230 E. Main • 428-1910

Come to Manchester Floors for the  
**Galaxy Carpet Sale!**

**NO PAYMENT**  
**INTEREST\***  
**For 6 MONTHS**

Come to Manchester Floors  
for the NEW 15 foot wide carpets!  
The larger the room, the more you need  
the seamless beauty and easy installation  
of Galaxy Carpet's new Fifteen Feet Carpet.

In fact, the wider roll can mean  
no seams at all in many rooms!  
And you don't have to compromise on  
style, selection or color when you shop at  
Manchester Floors.

Sale from Jan. 15th-30th, 1997

**FIFTEEN**  
**FEET** by GALAXY



\*Subject to credit approval. Finance charges and optional insurance charges on your purchases will accrue during the promotional period, but payments will not be required. If you do pay the purchase in full within this period, these charges will be credited to your account. APR 18% in CO, IA, ME, NC and WI; 22.35% (which may vary) in all other states. Minimum monthly finance charge: \$0.50 in all states, except none in CO, ME, NC and WI.