

THE MANCHESTER ENTERPRISE

Boldly Going Where No Newspaper Has Gone Before



131st Year -- No. 7

Manchester, Michigan

50c per copy

Productive Weekend At Weight Room

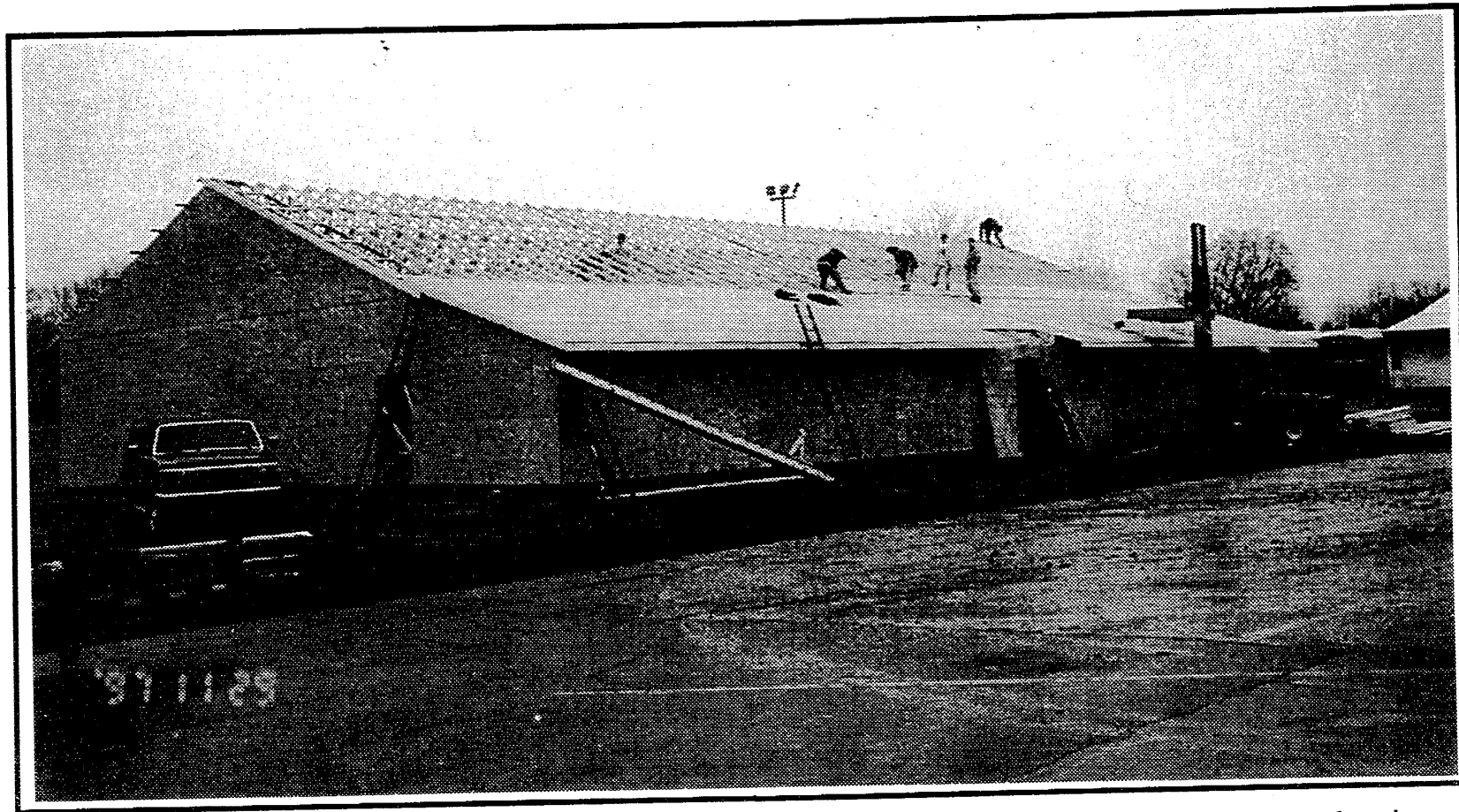
A Thanksgiving Weekend "workout" by community volunteers left the landscape behind the high school looking quite different Monday morning than it had when school let out on Wednesday. A concerted effort by a dedicated group of community members literally raised the roof of the MHS weight room over the four-day weekend.

Led by Norm Walz, a group of fifteen or so workers accomplished an amazing amount of work; raising the four walls on Thursday, (Jeff Proctor's crew started the walls Wednesday) and Friday, and bringing in a crane on Saturday to place the roof trusses.

Football Coach Wes Gall jubilantly reported on Sunday evening that the front half of the roof was ready to be shingled, and that the crew had worked practically non-stop during the daylight hours all weekend long. "It was just the right kind of weather, that made you feel like you could keep on working without a break," said Gall.

So although the rest of us may have eaten Thanksgiving dinner and watched football on Thursday, shopped till we dropped on Friday, and bemoaned the dull and hazy weather over the weekend, there were those who were using their talents and energies to better their community.

The most exciting day of the weekend had to have been Saturday, when two members of the



crew, Chet and Chad Meyers, brought a crane donated by Connelly Crane to help place the roof trusses in two hours. "That could have been an exhausting job, one which would have taken the crew much longer without the crane," remarked Gall. "This way, every time the crew got through securing one truss,

there was another hanging over them, waiting to be placed."

As soon as the remainder of the roof is completed, work can begin on the inside. Showers, rest rooms and changing rooms need to be constructed and outfitted, according to Gall. Much of the actual weight-building equipment for the facility al-

ready exists in the tiny area which now serves as the athletic department's "weight room." But there is still much work, and much fund-raising, to be done.

To date, the fund-raising efforts for the MHS Weight Room have reached \$102,000. But Gall reports that an additional \$79,000 is still needed for completion of the project. "And that doesn't include the \$98,000 worth of in-kind donations of goods and services which have been pledged or given to date," he continued. "The outpouring of generosity from this community for the weight room project has been great." Gall noted that both business and individual donations

had been abundant in recent months, to bring this weekend's efforts to fruition. A list of donors will be published in the Enterprise next week, and will be updated on a regular basis.

The athletes in this community have always been well-supported in their endeavors and this project is no exception. And although the foundation of the weight room building has been in place for quite some time, it is a real surprise to see the walls erected and discover how immense the new facility really is. The 6000 square foot building will be a proud addition to our community's athletic department.

- Marsha Johnson Chartrand

Schmalbach-Lubeca Plans Expansion

At Monday night's Village Council meeting, approval was given for Schmalbach-Lubeca to build a 11,000 square foot addition to their existing facility on M-52 south of town.

The L-shaped addition will be added to the northwest side of the building, and Shelley Steele of Schmalbach-Lubeca is happy to announce that the enormous oak tree she worked so hard to preserve when the original facility was built, will remain intact.

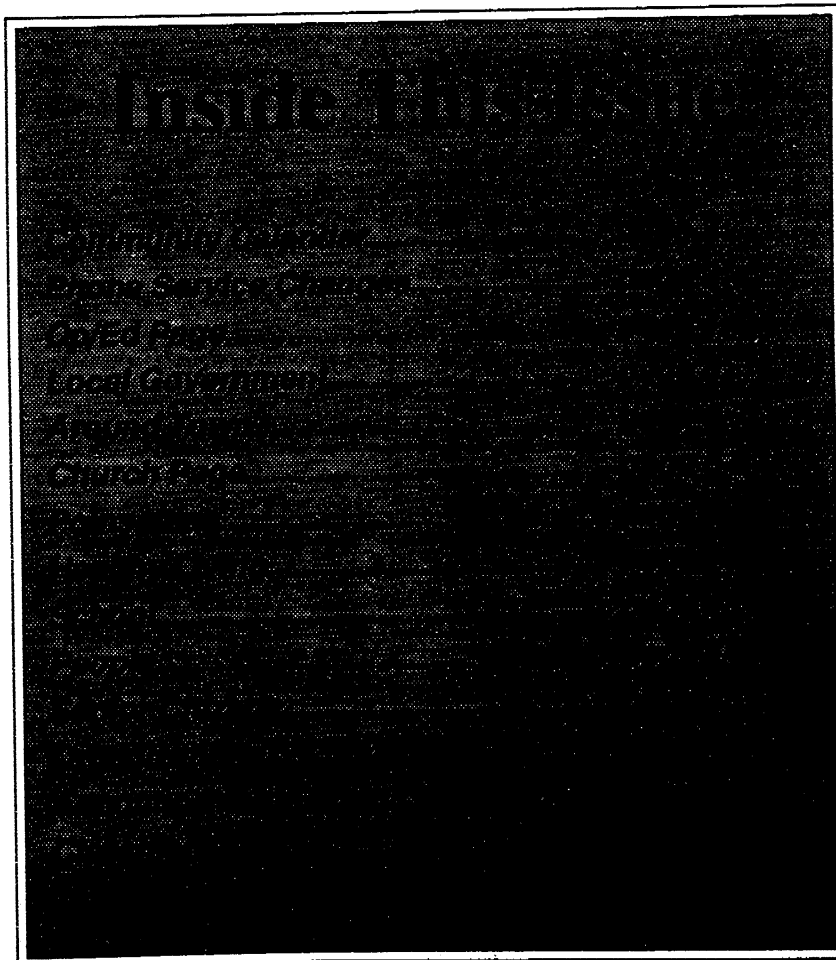
The addition will house mainly office space and sixty employees will be moved over from the Old Ford building. About thirty have already made the move. Hopefully ground will be broken before the ground freezes

The expansion "emphasizes Schmalbach-Lubeca's commitment to Manchester; the Village and the community has been excellent to work with and we look forward to continuing our relationship," said Steele.

734 Is Coming!
See Second Front
Page for Details

Please deliver this copy of THE MANCHESTER ENTERPRISE to—

Manchester Library
P.O. Box 135
Manchester MI 48159



OPEN HOUSE

KLEINSCHMIDT HARDWARE

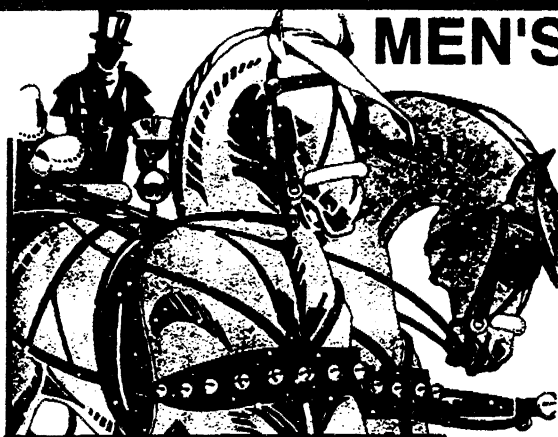
December 5th, 6th, 7th

See page 3

ATLAS OF MANCHESTER

Saturday, December 13th

See page 2



MEN'S NIGHT ONLY

DEC 06 1997

Thursday,

December 11th 6-8:00 pm

See Village Gift's ad, page 7.

Christmas in Manchester continues. See pages 5, 6 & 7

The Manchester Chronicle

75¢

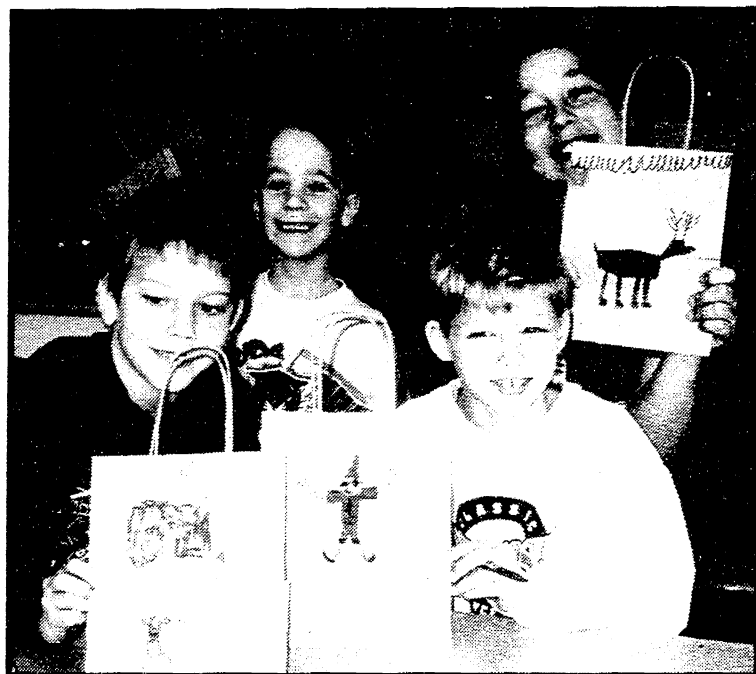
VOLUME IV, NUMBER 14

December 4, 1997

Manchester, Michigan 48158

Expressions of Art by Manchester Students

—Story and photos by Kathy Kueffner



Question: How many Manchester moms and dads have plaster clay molds of their children's handprints? Or "jewelry dishes," "ash trays," small picture frames?

Answer: Probably all of us have tucked away precious objects of art made by our children in school for Mother's or Father's Day gifts, or Christmas ornaments. We'd never, ever throw them away.

These objects of art have been made over the years under the direction of area artist, Chris Bragg, whose pottery studio is in Bridgewater Township. Bragg has volunteered his talent over the last seventeen years at the elementary school level and for projects at the middle school.

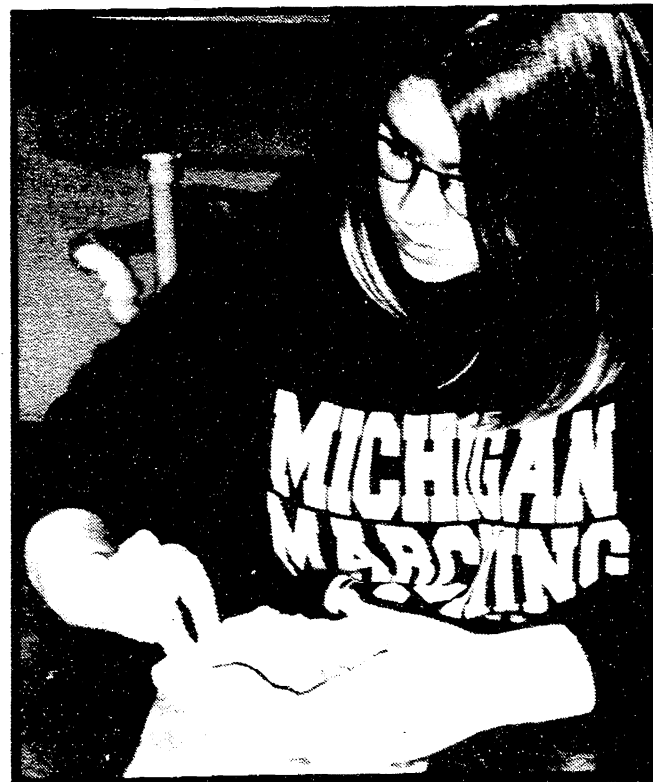
continued on page 11



Above: Lilia Kluwe with her coiled clay basket; and below, Jody Donnellon, fashioning scalloped edges to her clay bowl.



Above: Third graders proudly show off their work. Peg Chizmar's Village Gifts donated shopping bags to art teacher Carrie Resh's elementary students at Klager. The youngsters then decorated the bags with their own personal, colorful and original visions of Christmas. When you shop at Village Gifts this season, your purchase may be wrapped in one of these wonderful bags. Left: Sarah Uphaus, below left, Jeremy Rorabacher, and below, Travis Navarro.



The Manchester Chronicle
P.O. Box 697
Manchester, MI 48158

Manchester Township Library
P.O. Box 540
Manchester, MI 48158-0540

BULK RATE
U.S. Postage
Paid
Manchester,
MI
Permit No. 17

ADVERTISERS' INDEX

April Victoria...7
 Atlas of Manchester...2
 Dr. Bruce A. Bates...11
 BB Crafts...6
 Benedict Painting...8
 Black Sheep...6
 Bridgewater Vet...3
 Cevin's Collision...8
 Chamber of Commerce...6
 Chapters & Verses...7
 Chelsea Craft Show...5
 Chelsea Print & Gfx...8
 Dan's Westside Auto...11
 DuRussel Farms...4
 18th Century Shoppe...6
 Stu Evans Ford...12
 Fahey Realty...8
 Feldkamp Trees...5
 Fidge's Dexters...4
 Flora in the Mill...11
 Fusilier Farm...6
 Haarer's Mtg Place...7
 Dr. Raymond Howe...9
 Sula Jeffers, Attorney...8
 Jefferson Art Studio...2
 Johnson Door Systems...11
 Kim's Kountry Kitchen...4
 Kleinschmidt Hardware...3
 Kueffner Horseshoeing...3
 Limpert Antiques...4
 Manchester Co-Op...8
 Manchester Eye Center...11
 Manchester Floors...10
 Men's Club...5
 Manchester Pharmacy...7
 Manchester Tool & Die...4
 Marti's Salon...7
 One Eleven Brown St...11
 Paul's Pet Service...2
 Pinnacle Engineering...4
 Pyramid Office...7,8
 Quilter's Quarters...9
 Radio Shack...9
 Samaritan Counsel...9
 Sutton Insurance Agency...3
 Suzanne's Interiors...8
 Tirb Chevrolet...10
 Mark VanBogelen...10
 Video World...6
 Village Gifts...7
 Village Laundry...8
 Wacker's General Store...3
 Woodbrook Computers...2, 8

Congratulations, Dalton's Danes

— from Atlas of Manchester —

Linda Dalton raises champion Great Danes at her Freedom Township "TLC Farms" and credits part of their success to their diet. She feeds ProPac dog food which she purchases at Atlas of Manchester. "I don't need fancy supplements or have to use special grooming tricks; it's a great complete dog food," Linda told Mike Steffans of Atlas. Below: Four-in-hand, Jasmine, CJ, Annie and Obie winning Best Team at the Great Dane National Specialty; and, right, (inside) CJ and Annie, winning Best Brace, October 1997.





**Manchester High School
Key Club brings
Santa Claus to
Manchester**
**Come visit him at
Chapters & Verses Bookstore
Saturday
December 13th 1-3:00 PM**
Have your children's photos taken

For those in need of a Christmas Dinner
 For those who would otherwise be alone on Christmas Day
You are most cordially invited
 To a Christmas Day Dinner
 with all the trimmings — at no charge
December 25, 4:00 p.m.
 Emanuel United Church of Christ, 324 West Main Street
 Please call Dawna for reservations at 428-7821
 (Don't hesitate to call even if you call Christmas Eve!)

A gift from the Stockwell family



Jefferson Art Studio
**Annual Holiday
Open House**
 Saturdays after Thanksgiving
 10:00 a.m.-3:00 p.m.

Lithophane porcelain picture
 night lights, lamps & ornaments.
 Special hand-tinted color editions
 New: Porcelain tiles
 including tile desk clocks

4371 Lima Center Road
 (M52, to east on Pleasant Lake Rd.,
 north on Lima Center at Twp Hall)
 428-8861



Rose Bowl Souvenirs
 official licensed products now in
 Manchester

Christmas Ornaments, Car Flags 16oz and 28oz steins,
 coasters embroidered t-shirts, sweatshirts, polo shirts at

Woodbrook

231 E. Main St. • 428-7011
 M-F Noon-6PM • Sat & Sun by chance
 (a portion of all sales goes to support U-M athletics)

Paul's Friendly Pet Care Service
 428-9472



The Manchester Chronicle
 is published twice a month — the first and third weeks. Deadline for ads and
 copy is around the week preceding. (Phone for current month's dates.)
 Located in the downtown historic Mill, our address is 201 E. Main St., P.O.
 Box 697, Manchester, MI 48158-0697. Telephone: (313) 428-1230. No part of
 this publication may be used without the written permission of the publisher.
 "The Manchester Chronicle, Kathleen Kueffner, Editor/Publisher. Printed
 by The Tecumseh Herald.

The Chronicle is available for purchase at these locations: In
 Manchester • Back Door Party Store • Hop-In • Manchester Market •
 Manchester Pharmacy • Wacker's General Store; in Pleasant Lake at
 Fredonia Grocery; in Clinton at Tri-County Party Store; in Chelsea at
 Chelsea Print & Graphics and the Mobil Station; in Ann Arbor at Rusty's
 Roadhouse, Ann Arbor-Saline Rd.; in Saline at The Drowsy Parrot; and in
 Bridgewater at the Bridgewater Party Store.

Atlas of Manchester's Annual Christmas Open House

Saturday, December 13 ☆ 8:30-4:30

☆ Refreshments ☆ Door Prizes

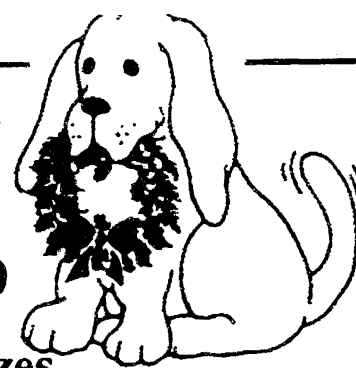
☆ Special Sale Prices on items throughout the store

Bird Feeders Make Great Gifts — Select from many styles — Colonial, Lantern,
 Cabin, Carousel, Silos, Window Trays, Tube Feeders. Bird Bath De-icers. Squirrel Feeders.
Don't Forget Your Pets — Cat and Dog Toys. Beefeater Holiday Pack Rawhide Bones.
 Colorful New Collars and Matching Leashes.

Thistle Seed Sale
 89¢/lb.

Books, tools and supplies for the gardeners on your list.

18875 W. Austin Road • 428-7077



Community Calendar

Scheduled Meetings

Bridgewater Township
Carol Peacock, Supervisor
517/456-7303

Karen Weidmayer, Clerk
13360 E. Austin
428-8641

Planning Commission
2d Monday 7:30
Township Board Meeting
3d Wednesday, 7:30

Freedom Township
Town Hall 428-7545

11508 Pleasant Lake Rd.
Robert Little, Supervisor
428-5585

Julie Schaible, Clerk
13785 Pleasant Lake Rd.
428-7241

Township Meeting
2d Tuesday 8:00 PM

Planning Commission
7:30 First Tuesday

Manchester Township
Town Hall 428-7090
275 S. Macomb St.

Ron Mann Supervisor
Kathleen Hakes, Clerk

Township meeting
2d Monday 8:00

Planning Commission
4th Tuesday

FIRE DEPARTMENT
428-9439 non-emergency

Sharon Township
Supervisor Gary Blades
5340 Hazel Rd., Grass Lake
428-9518

Teri Aiuto, Clerk
428-7002, 17250 Bethel
Church Road

Township Meeting
1st Thursday 8:00

Planning Commission
3d Thursday

Manchester Board of Education
Wayne Winzenz, President
Meetings

3d Monday 7:30
MHS Media Center
Superintendent - Ron
Niedzwiecki 428-9711

Village of Manchester
Larry Becktel, President

Jeff Wallace, Manager
428-7877

Village Council Meeting
1st & 3rd Monday, 7:00

Planning Commission
2d Tuesday after the first
Monday, 7:30 PM

The Manchester Enterprise is published weekly on Thursdays at 100 East Main St., Manchester, MI 48158. With second class postage paid at the Manchester Post Office.

POSTMASTER: Send Form 3526 to The Manchester Enterprise, PO Box 57, Manchester, MI 48158.

The Manchester Enterprise, Inc.
(313) 428-8173

Editor & Publisher
Teresa M. Benedict

Production Editor
Marsha Johnson Chartrand
Julie Schaible, accounting

The Manchester Enterprise is published weekly on Thursdays at 100 East Main St., Manchester, MI 48158.

COMMUNITY EVENTS

Monday

1st Monday Manchester Township Library Board meets 7:30 PM

1st Monday: Manchester Masonic Lodge, business meeting 7:30 PM

1st & 3d Monday: Manchester Village Council, 7:00

2d Monday: Bridgewater Township Planning Commission meets 7:30

2d Monday: Manchester Knights of Columbus meets 8:00 PM. Grand Knight Ed Barnard

2d Monday: Manchester Township Board meets 8:00

2d & 4th Mondays: Manchester Optimist Club

3d Monday: School Board meets MHS Media Center 7:30

3d Monday: United Way Board meetings, 7:30 at First of America Bank

Every Monday: Overeaters Anonymous 7:30 - 8:30 PM At Chelsea United Methodist Church, Contact 475-4264

Tuesday

2d Tuesday: Freedom Township Board 8:00

2nd Tuesday: Manches-

ter Computer Club, 7 PM at Chapters & Verses

2d Tuesday after 1st Monday: Village Planning Commission, 7:30 PM

2d Tuesday: Manchester Area Senior Citizens, 9:30 AM

2d Tuesday: 20th Century Club, 7:30 PM

2d & 4th Tuesday: Shakespeare Club, 1-3 PM

3d Tuesday: Manchester Historical Society, 7:30 at Blacksmith Shop

4th Tuesday: La Leche League 10 AM, call 428-8831 for location and info

4th Tuesday: Klager PTO 6:30 PM at school. Call 428-8321 for info.

4th Tuesday: Manchester Township Planning Commission

Every Tuesday: Boot Stompers at Emanuel Church 7-9 PM

Every Tuesday at Your Home: RECYCLE - containers at curb by 7:30 AM

Wednesday

1st Wednesday: Raisin Valley Land Trust, at the Blacksmith Shop, 7:30 PM

1st Wednesday: Veterans of Foreign Wars, 7:30 PM

2d Wednesday: American Legion Auxiliary 7:30 PM

2d Wednesday: Manchester Recreation Task Force 7:30 PM

3d Wednesday: Manchester Men's Club 7:30 PM

3d Wednesday, WIC Program, 9:30-3:00 Senior Citizens Bldg.

3d Wednesday: Bridgewater Township Board, 7:30 PM

3d Wednesday: Chamber of Commerce Meeting

4th Wednesday: Manchester Township Fire Department meeting, 7:30 PM

Every Wednesday: Community Band - 7:30 PM

Thursday

1st Thursday: Sharon Township Board meets 8:00

1st Thursday: American Legion Post #117 7:30

3d Thursday: Sharon Township Planning Commission

3d Thursday: Cub Scout Pack Meeting, 7:00 PM

4th Thursday: Community Resource Center Board, 7:30

Every Thursday: AWANA 6:30-8:30 PM for kids ages 4-6th grade at Community Bible Church

Friday

Every Friday: AA MEETINGS 7:00 PM at Emanuel Church Kitchen. All are welcome, for more information call church office 428-8359

Notices

1st & 3rd Saturday: Manchester Kiwanis meets. Call 428-7722 for information on meeting place and time

1st Sunday of each month: Breakfast at the American Legion, 8 AM till noon, \$4.00 per person

Coming Events

20 Shopping Days 'til Christmas!

American Legion Dances- Winter Dance 1-17-97
St. Patrick's Day Dance 3-14-97 8 pm-12 pm.

The Community Calendar is a regular feature of the Enterprise. If your meetings or special events should be listed here, please call us at 428-8173

Palmer Ford Trucks

LARGEST AVAILABILITY IN THE MIDWEST

Call Toll Free: 888-475-0045

(313) 475-0551 or (313) 475-2120

Convenient Service

Will work hard to earn your Business



Mike, Kelly, and Chene Kushmaul

Available day & night to serve you

(just ask my family)

There is still 3 Great reasons to do business with me...

Whether it's a New or Used, Car or Truck

Call Mike Kushmaul - Toll Free



MERCURY

THE AWARD WINNING DEALER
PALMER
Michigan's Oldest Ford Dealer



FORD
MERCURY

Dial-a-Garden

971-1129

Dial-A-Garden, a service of the Washtenaw County/ Michigan State University Extension Service, is a system of prerecorded gardening messages. The feature has a format which lets callers with a touch-tone phone select which message they wish to hear. The messages are changed monthly.

November-December 97

101 Amaryllis
102 African Violets
103 Fruiting Ornamentals
104 Late Fall Fertilizing
105 Buying a new house plant

201 Cyclamen
202 Autumn Rose Care
203 How long can seeds be stored?
204 Deer, mice & rabbit damage
205 Growing Vegetables indoors

301 Reflowering Christmas plants
302 Kitchen pests
303 Caring for Christmas plants
304 Why won't house plants flower?
305 Choosing a Christmas Tree

401 Keep your Christmas tree fresh
402 Recycle your Christmas tree
403 Salt injury on plants
404 De-icing sidewalks
405 Gardening resolutions

High School FFA Members Attend National Convention in Kansas City

Students attending were: Jason Schaible, Erin Makielski, Chris Benedict, Matt Horodeczny, Lisa Burmeister, Angie Makielski, Laura Kanta, Jordan Wahl, Laura Haeussler, Jolene Hochstetler, Marie Haeussler, LeAnne Ellsworth, and advisor Ryan Rowe.



Students from the Manchester Future Farmers of America (FFA) program recently attended the National Convention in Kansas City, Missouri. The group departed on November 10th with twelve members from Manchester, and others from both Milan and Dundee.

The trip took them first to Chicago where the group took a trip to the top of the Sears Tower as well as visiting the fabulous Shedd's Aquarium.

On Tuesday, they traveled to St. Louis where they were able to view various species of animals at the St. Louis Zoo, learn about the agricultural inputs at the Anheiser-Busch Brewery, and have a breathtaking sight from the top of the St. Louis Arch.

On Thursday, the FFA members reached their destination in Kansas City, the National FFA Convention.

With over forty thousand FFA members attending from Puerto Rico to Alaska and from Hawaii to Maine, Kansas City was bombarded with a very diverse group of students.

provided a concert for the members and they viewed the American Royal Rodeo.

As the week came to a close and the group traveled home, everyone reminisced about the people they had met, their experiences, and the knowledge gained. This week gave us a great chance to see how our FFA and Agriscience programs can develop. The students are very excited about entering contests and building our local chapter so that we may not only travel to the National Convention, but compete as well.

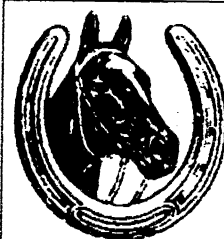


The Bridgewater Vet
WILLIAM K. WELLMAN, D.V.M.

Clinic •
Outpatient Surgery •

9066 Austin Road
Bridgewater, MI 48115

(313) 429-5889
(313) 429-6074



MATT KUEFFNER

HORSESHOEING

Full Time Farrier
Manchester, MI

Phone:
(313) 428-8005
(Leave a message)

SUTTON INSURANCE AGENCY, INC.

136 East Main Street
Manchester, Michigan

Manchester's Independent Agency

• AUTO • HOME • FARM • LIFE
• HEALTH • DISABILITY

"We Take Pride In Our High Level of Quality Service!"

Note New Hours:

Monday through Friday 9AM-5PM
After-hour appointments available.
(313) 428-9737

"I believe the city did a great job of providing us with beautiful facilities to hold sessions on leadership, have a career show, and have entertainment," stated Matt Horodeczny of the Manchester chapter.

The convention gave the students a great chance to see how other programs were functioning as well as gaining new ideas from a fantastic career show, sessions provided by the National FFA officers, and contests between various school teams at the national level.

Various experiences the students were able to partake in were the career show, where companies such as John Deere, Ford, Pioneer Seeds, and AquaRanch put on displays and provided booths for not only gaining knowledge, but supplying opportunities for employment in the future. Several universities and trade schools talked with juniors and seniors about their plans for the future.

Also the national office team put on sessions such as *Building the Future*, and awarding the Star Agribusiness and Star Agrimanagement FFA member of the year.

For entertainment, the group Blackhawk

Kleinschmidt

19860 Sharon Valley Rd.

True Value

HARDWARE
Manchester, MI

Help Is Just Around The Corner

Monday-Friday 7am-6pm

Saturday 8am-5pm

Sunday 10am-4pm

Phone: (313) 428-8337

CHARGE CARD VISA

CHRISTMAS OPEN HOUSE

December 5, 6, 7

Free Refreshments — Big Savings on Many Items

DRAWING DRAWING DRAWING

Name _____

Address _____

Phone Number _____

No
Purchase
Necessary

1st Prize: \$129.99 Value - 5pc Card Table & Chair Set

2nd Prize: \$79.99 Value - 20-inch Boys or Girls Bike

DRAWING HELD MONDAY, DECEMBER 8

Donate a NEW unwrapped toy at a participating True Value and help make Santa's dream of "a toy for every child at Christmas" come true

TOYS FOR TOTS

True Value is a proud sponsor of the Marine Corps Reserve Toys for Tots Campaign

COLORING CONTEST

For Boys and Girls up to age 8

Winner to receive

Choice of Boys or Girls 16" Bike

See Store For Details

Wacker's General Store

Lots of Goodies to choose from!

Holiday
Fruit & Gift Baskets
made to Order
Many Baskets to
choose from
or bring in your own.
We'll fill it to your
specifications!

Place your orders from
now till Dec 24th!

Corner of M-52 & Pleasant Lake Roads, Manchester
Call 428-8366 or 1-800-535-5949

Smoked Fish
Nuts
Candy Wines/Liquor
Fruits
Fresh Baked
Cookies & Bagels
Cheese
Meats
Homemade Breads

The Second Front Page

Telephone Time

New Area Code Coming Soon

- by Marsha Johnson Chartrand

Remember when you had to dial the operator to place a phone call outside your local calling area? (Remember when you used to dial a telephone?) Then came "area codes," where you could directly connect to a friend or relative anywhere in the country. Now you can call almost anyone, almost anywhere in the world, from your own home telephone...or from your car phone, or your fax machine, or your computer.

Times are changing. And so is our local area code. With the abundance of additional phone lines in the metropolitan areas - not to mention everywhere else - new area codes have been added around the big cities...and now this phenomenon is reaching out and touching Manchester. Beginning next Saturday, December 13, Manchester's area code will be changing from 313 to 734.

This new area code affects most of Washtenaw county, Monroe county, and a small portion of Livingston and Wayne counties.

Why is an area code change necessary? There has been an explosive demand for telephone numbers, with a wide variety of telecommunication services which didn't exist even a few years ago. Not only is the area growing population wise, it's growing telephone-wise, too. Fax machines, cellular phones, pagers, voice mail, computer modems and second phone lines are becoming a fact of life. As a result, the available telephone numbers in the 313 area code are being depleted. The region could literally run out of

telephone numbers by this time next year.

According to Ameritech information, numbers dialed using the old area code after the new one is introduced, will be subject to a grace period. Called an "optional dialing" period, during this time, you may use either the old or the new area codes to complete your calls. However, beginning July 25, 1998, the 734 area code must be used to complete calls to our area. This gives you plenty of time to notify most of your correspondents (a good time to do so would be while writing out your holiday cards.)

After July 25, if you forget to dial the new area code, you will hear one of those dreadful recordings which instruct you to "hang up and dial again" using the new 734 area code.

Most other calling patterns will remain the same. If you are dialing outside our area code, you must still dial 1+area code+seven-digit phone number. But times only change so much. Manchester's world hasn't expanded beyond Manchester, Chelsea and Ann Arbor. Ypsilanti, Saline and Dexter will still be considered

long-distance calls. Basic rule of thumb - if the call was long distance before, it will remain subject to long distance rates, and 1+734 must be dialed prior to dialing the 7-digit number.

According to Ameritech, most cellular and paging customers will not have to change area codes. Contact your equipment provider with any questions.

If you have an Ameritech calling card, you will simply have to change the area code in your calling card number. Your four-digit PIN will not change. If you would like to receive a new calling card, please contact the Ameritech office (221-2121). If you use card-reader telephones, you will need to obtain a new card.

You don't think the change in area code will affect you much? Well, in addition to all of your long-distance friends and relatives who will need to know of your change in telephone number, think about your printed stationery, your business or personal cards, and your checks. Will you cross out your old area code or will you order new ones?

Do you have a memory dial on any of your telephones, at

home or at the office? Don't forget to change the area code on your speed-dialers. An answering machine or voice mail? Be sure you correct the number on your outgoing announcement, and for voice mail you'll want to remember to dial the right area code to reach your access number. Does your computer have Internet service? You will want to make sure it dials a number with the correct area code if you want to surf the web.

Businesses will have a wider range of changes to consider. Reprogramming telephone equipment which stores or analyzes telephone numbers, including PBX systems, speed call lists, call forwarding, voice mail, key systems, fax machines, auto dialers, computer modems, burglar and fire alarm systems. You think you have a tough time with stationery and checks? Businesses are advised to check their order forms, brochures, invoices, product packaging, labels, and catalogues...not to mention their marketing materials, such as print ads, billboards, classified ads, TV and radio commercials, motor vehicle signs, and promotional

materials.

Whether you're a business or an individual, you may be listed in other directories besides the local phone book. Volunteer, professional and business organizations often publish their own directories. Make sure you advise them of your new area code.

With a total of four area codes where there used to be only one, there is bound to be some confusion for a while. Just when we were getting used to the 810 area code, now some of those people have another new area code (248). Just when we started feeling smug about keeping our old area code, now the changes affect us, too. If you have questions for Ameritech, you can call the special information hot line which has been set up, by dialing 1-800-831-8989.

And, it proves convenient that the *Enterprise* can help you out with your stationery, business card, and other printing needs as the area code changes. Call us or stop in to order everything you need. Our new phone number will be (734) 428-8173, starting December 13. What's yours?



The Bridgewater Vet
WILLIAM K. WELLMAN, D.V.M.

Clinic ●
Outpatient Surgery ●

9066 AUSTIN ROAD
BRIDGEWATER, MI 48115

(313) 429-5889
(313) 429-6074

NEW & USED CAR SALES



Neil Horning

Stop in -
Take advantage
of the rebates on
model year-end
Clearance Prices!

475-1301

THE AWARD WINNING DEALER
PALMER
Michigan's Oldest Ford Dealer



"What are the positive effects of the sun?"

Nature's Skin Protection

It is commonly known that your natural tanning process provides protection against burning. Your natural tan offers protection that doesn't run, sweat or wear off the way sunscreen lotion can.

Vitamin D Osteoporosis Prevention

Sunlight and suntanning beds that emit UVB are reliable sources of vitamin D-3. Vitamin D is necessary for our bodies to use the calcium we get in our diet. Your skin produces Vitamin D naturally when exposed to sunlight!

Reduce Symptoms of PMS

Exposure to bright light has been found to help alleviate some symptoms of PreMenstrual Syndrome, such as mild depression, mood swings, irritability, physical, and social withdrawal.

A Strong Biological Clock

Having well-synchronized circadian rhythms, or biological clocks, result in a better quality sleep, daytime alertness, and optimal health in general.

Seasonal Depression Therapy

Sunlight and simulated sunlight "doses" are a successful treatment for the "winter blues."

TROPICAL EFFECTS
428-0504 • 20436 E. Austin Road

Gift Certificates &
Holiday Baskets Available.

Locally Owned and Operated

Modern Waste Systems, Inc.



7255 S. Brooklyn Rd.
P.O. Box 275 Napoleon, MI
(517) 536-4900

COUPON COUPON COUPON

One Month FREE with this coupon

For all New Customers

Service Included

(Valid from 12/1/97 to 1/31/98)



Manchester Area Churches



BETHEL UNITED CHURCH OF CHRIST

Rev. Richard Hardy
10425 Bethel Church Rd,
corner of Schneider, Freedom Twp;
428-8000/429-7155 - Service 9:30 AM.

CLINTON ASSEMBLY OF GOD

Rev. Richard Coury
13300 Clinton-Manchester Rd
517-456-7510 - Sunday School 9:30 AM;
Worship 10:45; Sun. Eve 6:30; Wed.
Prayer, Bible Study Youth 7:00 PM.

COMMUNITY BIBLE CHURCH

Pastor Jody Riethmiller -
8400 Sharon Hollow Rd., Manchester Twp.;
428-8709 - Worship: 10:00AM;
Sunday School: 11:30 AM;
Wed. Bible Study & Prayer 7:30PM

EMANUEL UNITED CHURCH OF CHRIST

Rev. Vincent Carroll
324 West Main Street, Village; 428-8359 -
Sunday School: 9:00 AM; Worship: 10:30 AM;
Coffee and Fellowship: 11:30 AM.

IRON CREEK COMMUNITY CHURCH

Tom Butterfield, Pastor
Corner of Sharon Hollow & English Roads,
Manchester Twp. Sunday School: 10:00 AM;
Morning Church 11:00 AM; Sunday Evening
7:00 PM.

MANCHESTER UNITED METHODIST CHURCH

Rev. Thom Davenport, Pastor
501 Ann Arbor St., Village; 428-8013
(Parsonage); 428-8495 (Church)
Worship 10:30 AM.

NORTH SHARON BAPTIST CHURCH

Bobby D. Toler, Pastor; Robert Burton,
Assistant Pastor, Tim Butterfield, Associate
Pastor; - Corner of Sylvan and Washburn
Roads, Sharon Twp; 428-7222 - Sunday
School: 10:00 AM; Morning Church: 11:00
PM; Evening Church 7:00 PM; Wednesday
Bible Study and Youth Meeting: 7:00 PM.

ST. JOHN LUTHERAN CHURCH

Rev. Erling Aaserud, Pastor
8805 Austin Road, Bridgewater
429-7434 - Sunday School: 9:15 AM;
Sunday Worship 10:30 AM.

ST. JOHN'S UNITED CHURCH OF CHRIST

Rev. Nancy Doty, Pastor
12376 Waters Road, corner of Fletcher,
Freedom Twp./Rogers Corners
Worship and Sunday School: 9:30 AM.

Blessed are the poor in spirit for theirs

is the Kingdom of heaven. Blessed are they that mourn, for they shall be comforted. Blessed are the meek for they shall inherit the earth.

ST. MARY CATHOLIC CHURCH

Rev. Charles Irvin, Pastor
210 West Main Street, corner of
Macomb;
428-8811 Masses: Monday-Wednesday
& Friday 8:30 AM; Thursday 7:00 PM;
Saturday 5:00 PM; Sunday 8:30 & 10:30
AM. Sacrament of Penance: Saturday
4:00 to 4:45 PM.

ST. THOMAS LUTHERAN CHURCH

Rev. John Kayser, Pastor
10001 W. Ellsworth Road, Freedom
Twp; 663-7511 - Sunday School: 9:30
AM Worship 10:45 AM.

SHARON UNITED METHODIST CHURCH

Rev. Peggy Paige, Pastor
Corner of M-52 and Pleasant Lake,
Sharon Twp.; 428-7714 (Church); 428-
8430 (Parsonage) - Sunday School:
10:00 AM; Worship 11:00 AM.

VICTORY BAPTIST CHURCH

Pastor Jon King
423 S. Macomb Street, Village - 428-
7506 - Sunday School: 9:45 AM;
Morning Worship: 11:00 AM; Evening
Worship: 6:00 PM; Wednesday Bible
Study and Prayer: 7:00 PM.

ZION LUTHERAN CHURCH

Pastor David Hendricks
3050 S. Fletcher Road, Freedom Twp.
475-8064 (Chelsea) Worship 9:30 AM.

North Sharon News

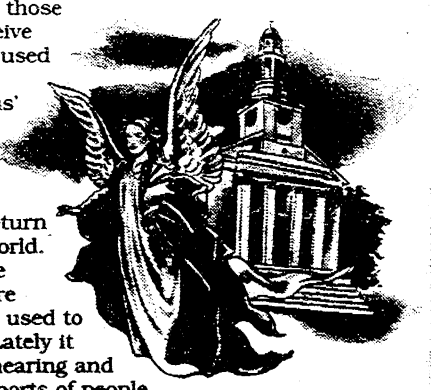
—by Triscia Stiles

Excitement is shining in the eyes of the students. Everyone is anxiously finishing home-work. Students are emanating new found energy and life — Thanksgiving vacation is finally here!

Many are planning to go out of town, while some are staying home. Some will visit family, while others will be visited by family. Regardless, the closeness of relationships and strength of bonds become very evident during this season. Siblings seem more sharing, friends more caring, and teachers seem to assign less homework — for this we are definitely thankful!

Due to nonstop busyness throughout the year, I find myself taking for granted those things which are truly and unconditionally important. Family ties become understandably strained with the stress of life. The holidays seem as a type of haven, a chance for a person to relax and think about all that he has.

I, personally, like to think of Thanksgiving not only as a time to be thankful for what I've received in the previous years, but also to set resolutions for the future. I often plan attempts to be kinder, friendlier, or more ambitious, and being close to family and friends during the holidays makes it even easier to begin those resolutions. There is nothing I am more thankful for than family. What a wonderful foundation God has ordained! I hope we all remember to thank Him.



ANGELS

Who are the angels? The Bible tells us in Hebrews 1:14, that they are spirits who serve God and are sent by Him to help those who are to receive salvation. God used angels to announce Jesus' birth, His resurrection, and to announce that Jesus would return again to this world. Throughout the Bible, angels are mentioned and used to do God's will. Lately it seems we are hearing and seeing more reports of people in trouble being helped by some supernatural power. Signs of angels are everywhere and God is using the angels to help draw souls to salvation and to help prepare us for Jesus' triumphant return. Angels worship and serve God and they are always faithful to God's will to help His people. We have all been given the wonderful gift of an angel who is ready to help us in our time of need. Angels are like good friends who are always there when we need them, waiting to be asked for their help. God's love for us is beyond compare and he knows all of our desires and needs. Remember that we are never alone; we always have the Holy Spirit and the angels with us.

God will put his angels in charge of you to protect you wherever you go.

Good News Bible Psalm 91:11

The Church Page is sponsored by

Kim's Kountry

Kitchen

9610 M-52
HOURS: 6am-2pm EVERYDAY
428-1248

"Man shall not live by bread alone."

Kiwanis

428-7722

Meet 1st & 3rd Saturdays
at the Black Sheep

"Serve men as I have served you."

DuRussel

Potato Farms

FARMING IN MICHIGAN
FOR 5 GENERATIONS

"The farmer waits for the precious produce of the soil."

A & J Travel

154 E. Main St.
428-8307

"Seek from Him a safe journey for us and our little ones..." Ezra 8

Sea of Glass

ARCHITECTURAL

STAINED GLASS

428-9218

"...standing on the sea of glass holding harps of God."

Dan's Westside

Automotive

600 W. Main St.
428-9455

"...there is a great charm fixed..." Luke 16

D. E. Limpert

ANTIQUES BY

APPOINTMENT

428-7400

"Wisdom is with aged men. With long life is understanding."

MANCHESTER

TOOL & DIE, Inc.

428-8346

Since 1954

"Every man shall receive his own reward according to his own labor." I Corinthians, iii.

PINNACLE

Engineering Co., Inc.

10250 M-52
Manchester, MI 48158
(313) 428-7039

"Whatever thy hand findeth to do, do it with thy might." Ecclesiastes, ix, 10

Fidge's Dexters

Registered Small

Cattle 36-40 inches

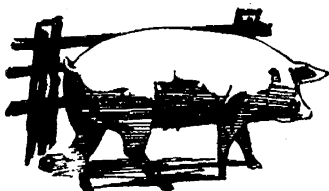
428-0556

"...and found Mary and Joseph and the Babe lying in the manger." Luke 2:16

Blessed are they who hunger and thirst after righteousness, for they shall be filled.

Editorial/Opinion Page

Out of the Pen



- by garlene

Well, it's here again, folks. December! The season of shopping, hurrying, and over-commitments. The season of how-do-I-squeeze-it-in? A season for parties and special occasions and more parties. A season of hustle and bustle and spending too much money and...

Wait a minute, garlene wonders. Is this really what it's all about?

garlene recalls that when she was much younger, December was a season of wonder. Could it be possible to get back to the season of wonder? She suspects that today's piglets are not much different - though perhaps a tiny bit more materialistic - than those of her own piglethood. Perhaps we grown ups have a lot to learn from the piglets in our lives.

Take a look at how the piglets think about celebrating the holidays. They spend much time in creative pursuits...cutting out paper snowflakes, gluing together colorful paper chains, and perhaps, if mom and dad are lucky, much

sawing and hammering of woodworking projects. They don't have a lot of money and they don't pretend to have money they don't have. They give gifts for the joy of giving and trust that they will be appreciated even if they don't cost much.

Sometimes piglets take an interest in the culinary arts and decide to bake Christmas cookies. Of course the kind they like the best are the cut out sugar cookies, complete with as much frosting and as many decorations as may possibly fit on them. They don't try to make 45 dozen cookies of twelve different varieties, and then save them all up so there's lots to eat after Christmas! They're satisfied with one kind of cookie that you can eat today. And maybe, if there are any left over, you can finish them up tomorrow.

Decorating the home piglet-style may not win you a place in Better Homes & Gardens, or a plaque in your front yard. But there is nothing quite like a

Reach garlene via e-mail at <garlene@juno.com>.

Christmas tree decorated by the young members of the family. Granted, it will be rather lopsided...the ornaments will be concentrated bottom, front and center. A color coordinated tree (or home, for that matter) will be a thing of the past - or the distant future. And those paper plate wreaths on your front door will make a fashion statement all their own.

The parties that the piglets enjoy are easy and the party menus are equally so. A pizza party while they decorate graham-cracker houses. Cookies and ice cream while reading "The Night Before Christmas." Simple yet eagerly awaited traditions are sometimes the best.

These aren't fancy ways to celebrate the holidays, but they are incredibly stress-free. The piglets end up having time to enjoy the holiday season and create their own season of wonder. Maybe we could follow their example - if not in full, at least in part. If we simplify our lives this holiday season, we will be doing less and enjoying it more. And we will have learned our lessons well.

Out & About



- by gar

The Town Meeting conducted by the School Board last month has generated a good deal of interest as well as some concerns. The interest centers around parents, community leaders and educators thoughts that we need to enhance our schools educational process to benefit the children of Manchester Community Schools. The concern seems to center around the fact that "Past Town Meetings contained a good deal of rhetoric but NO ACTION."

One young lady to whom gar spoke today stated, "I have gone to several of the meetings, as well as directed both oral and written requests to the Superintendent and nothing has happened. I have been frustrated by the lethargy of our school system and it is my opinion we have short changed our kids. We have studies, we conduct meetings, we make recommendations; but what do we get? Nothing! I can't get answers to simple questions like are our text books current?

Are our curricula values being met or do we have to send our children away as one board member has to meet her child's needs. I am disgusted and discouraged. I hope that Winzenz does as he promised!"

I could not answer this young lady's questions. The Enterprise staff has experienced many of the same frustrations. Recently a simple freedom of information request made on November 15th was replied to on November 24th; the response stated that a reply was being "researched" and would be forthcoming by December 9th.

A recent "Dilbert" cartoon that stated, "It might look like I'm standing motionless, but I'm actively waiting for our problems to go away," might describe our Superintendent's stance.

Have a Good Day,

gar

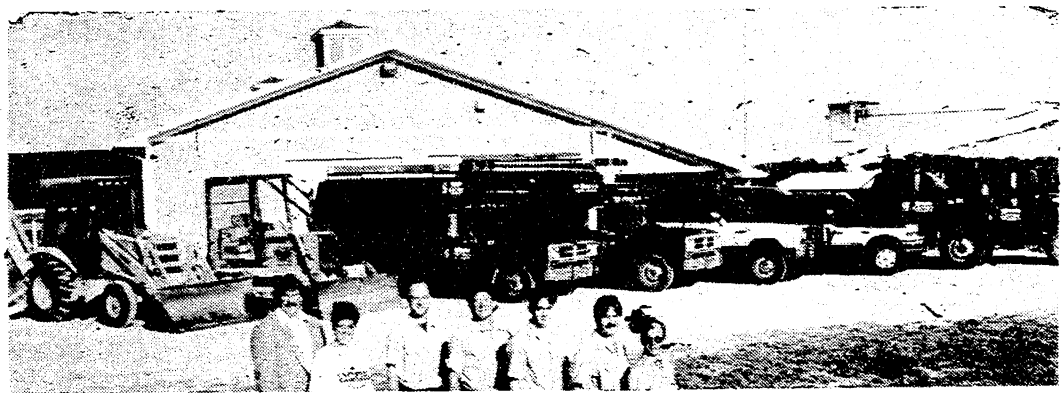
- E - Endeavor to improve our schools
- D - Devise a method to improve
- U - Utilize staff and parents
- C - Communicate accomplishments and needs
- A - Appraise your past performance
- T - Thirst for accomplishing objectives
- E - Evaluate future school needs and objectives

STEIN ELECTRIC COMPANY, INC.

Licensed & Insured Contractor 24 Hour Emergency Service
Motor Controls & Lighting

Ag. • Commercial Industrial • Institutional Residential • Backhoe
& Trenching Services 50 ft. Bucket Truck

Rick Graustein • Manchester, MI • 313-428-9050



Character
Reading

Mrs. Ava



Spiritual
Psychic Reader
& Advisor



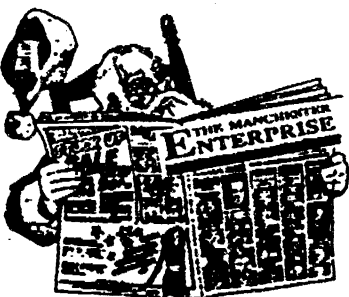
I am superior to all other readers. Other readers come to me for advice. I guarantee help in love, marriage, business and health. I will help you overcome drinking, gambling, or a loved one without asking a single word and give lucky days. One visit will convince you I am God sent.

Open 7 Days
9 a.m.-9 p.m.

\$5.00 off First Visit

Call for Appointment • 4412 W. Maumee St. • Adrian • 265-8025

Give
A Gift
Subscription
to
THE
MANCHESTER
ENTERPRISE
A Great
Holiday Gift



Fill this form out, send a check along for \$18 in Washtenaw county \$20 for out of county or out of state and we will send a Gift Certificate to your recipient

Name: _____

Address: _____

City, State, Zip: _____

This Gift Subscription is From: _____



Junior Girl Scout Troop #596 make ornaments for The Warming Tree

Left: (l-r) Rebecca Long, Holly Staten, Megan Jackson, Ashley Slocum Right: (l-r) Allie Watson, Lauren Hone, Molly Sears, Lynne Preston, Alanna Gehringer Below Left: Melissa Cole on the left and Jenny Schillenhelm

The Warming Tree, sponsored by Manchester Family Services, and decorated by Junior Girl Scout Troop #596, is displayed in the lobby of First of America Bank on M-52. Bring a pair of mittens, scarf, cap or warm socks to First of America for the children of Manchester and take an ornament in exchange for your donation.



The Angel Tree at

Chapters & Verses Bookstore

Select an angel (boy or girl and age of child) from the tree, purchase a book for that child at a special discount, and Chapters & Verses will deliver the books to Manchester Family Service Christmas Shop for Dec. 10.

The Gingerbread Tree at Great Lakes Bancorp

Pick a child from the Gingerbread Tree at Great Lakes Bancorp on Main Street, donated an appropriate gift for the child's age and whether boy or girl, drop off the UNWRAPPED present at the bank. Presents will be delivered to the Manchester Family Service Christmas Shop for December 10.



The Warming Tree at 1st of America Bank



Santa's Workshop Holiday Craft Show

Saturday, December 6
10:00-4:00
 Chelsea High School
 500 E. Washington
 Chelsea
 Admission \$1
 Information
 (313) 475-2275
 Proceeds Benefit Chelsea High School Fastpitch Softball

Dexter's Victorian Christmas

Saturdays: December 6th & 13
12 Noon-7PM

Merchants and residents will be attired in Victorian-style clothing and hold open houses where crafts and handiwork from long ago will be displayed in their shops.

Actors and players from the area will conduct street performances depicting scenes from Christmas plays of the Victorian era. A Victorian Santa, horse-drawn sleigh rides, and a parade, with carolers strolling the streets to celebrate the season with joyful songs.



The Manchester Chronicle
 (313) 428-1230

Feldkamp Trees & Wreaths

We have
12- to 15-foot trees for cathedral ceilings!
 8701 Smyth Rd.,
 Manchester
 Friday & Saturday 9-5
 Sunday 1-5
 or by appointment
428-8571

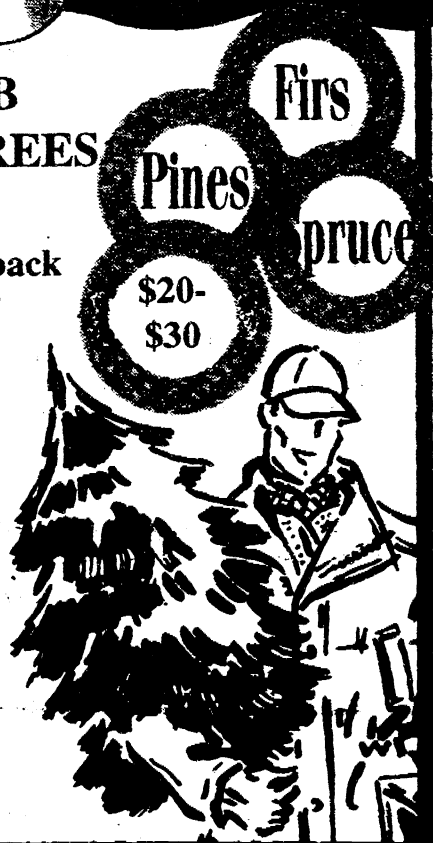
"YOUR TREE IS HERE."

MEN'S CLUB CHRISTMAS TREES

100% of proceeds go back into the community of MANCHESTER

Located on Adrian Street in Tirb's Chevrolet Lot

M-F 5-8:00 PM
Saturday 9-4
Sunday 12-6



Our Saviour Lutheran Church is sponsoring a benevolent spaghetti meal for Megan Krull, a 3-year-old diagnosed in August with acute lymphocytic leukemia.

The dinner will be held at the church, located next to McDonald's in Chelsea, on Saturday, December 6 from 11:30 to 8pm. The Aid Association for Lutherans will be matching donations dollar for dollar.

Christmas Trees — \$15
Wreaths — \$10 and up
Poinsettias — starting at only \$6

Fusilier Family Farm & Greenhouse
 16400 Herman Rd.
 (W. Austin Rd., then south on Sharon Hollow (follow the signs))
428-0092 or 428-8982

WE NEED YOUR HELP

Last Tuesday night and Wednesday morning, between 10:00 PM and 3:00 AM, a reckless driver was tearing up the streets of Manchester. The brown Ford Van damaged a traffic sign, a rubbish container, a lawn extension and a tree. The damaged occurred on Territorial, Macomb and Duncan Streets.

We need any information that will identify the driver. All tips can be reported to the Manchester Station of the Sheriff's Department (313)971-9036 or 428-8829 Sgt. Gerald Haensler.

I also would like your help with the rash of damage to mail boxes that are occurring on our rural roads. They are occurring during the nighttime hours and mostly on weekends. I am asking for those of you who live on rural roads to watch for cars acting suspiciously in your area.

If possible get the following information: license plate number, make and color of the vehicle. This information can also be reported to the numbers above. As always, if you need police assistance call 911.

- Sgt. Gerald Haensler

Police Beat - WCSD Station 4, Village of Manchester Week of November 24-30

Monday, November 24:

8:19 AM Conservation,
S. Macomb; 8:09 PM
MDOP, Adrian St.

Tuesday, November 25:

11:30 PM Medical; E.
Duncan

Wednesday, November 26:

2:16 AM Hit & Run
Crash, Clinton St; 9:33
AM Hit & Run Crash,
Territorial; 1:23 PM Real
Civil Dispute, E. Duncan

Friday, November 28:

6:23 PM Hit & Run Crash,
Macomb St; 10:07 PM
Drive Off, E. Main

Saturday, November 29:

4:28 PM Runaway,
Summit St.

Sunday, November 30:

5:35 PM Disorderly, W.
Main St.

Agenda Manchester Village Planning Commission

Tuesday, December 9, 1997
7:30 PM

1. Call meeting to order
2. Approval of Agenda
3. Approval of Previous Minutes
4. Correspondence
5. Public Participation
6. Reports from Administration
7. Old Business
 - a. Manchester Woods PUD -Final Site Plan Review
 - b. Manchester Meadows - Subdivision Review
 - c. Krauss Pharmacy Building - Site Plan Review
 - d. Zoning Codebook Review
 - e. Other
8. New Business
 - a. Other
9. Adjourn

BRIDGEWATER TOWNSHIP PLANNING COMMISSION

Summary Minutes of the Regular Meeting
November 10, 1997

A Special Land Use permit was approved for Garry and Peggy Schleicher to operate a public riding stable at 9898 Kies Road, Manchester.

The Commission certified that Rustic Glen Golf Club has completed all of the actions required for expansion to an 18 hole golf course, subject to reimbursement of township engineering fees related to the expansion view.

The new Township Zoning Ordinance will become effective on November 22, 1997. Copies of the ordinance are available for public review at the Clinton, Manchester and Saline Public Libraries. Copies may be purchased from the Township Clerk, Karen Weidmayer, by calling 313-428-8641.

The next regular meeting is December 8, 1997 at 7:30 PM.
Wade Peacock, Secretary

The regular meeting of the Manchester Village Council was called to order by President Bechtel at 7:00 PM. Council members present: Ames, Bechtel, Conaway, Mahony, Marshall, Way. Absent: Brooks. Also present: Manager Wallace, Clerk Tucker, Scott Johnson, Larry Byrne - River Ridge Development, Jerry Haensler - WCSD, Rick Finger- Planning Commission.

The minutes of the November 3, 1997 regular meeting were approved as amended on a motion by Marshall, support by Conaway, adding under SRLF Draft Water Plan discussion "Mahony noted that the motion made was not in keeping with the engineers' recommendations." Vote: Ayes-all.

The proceedings of the November 3, 1997 regular meeting were approved as presented on a motion by Ames, support by Way. Vote: Ayes-all.

The Agenda was approved as amended on a motion by Mahony, support by Way. Vote: Ayes-all.

Council acknowledged the following correspondence:

- Letter from Collins & Aikman advising the Village that Manchester Plastics will be changing its name to Collins & Aikman Plastics, Inc.

- Letter from Manchester Township Library asking for an increase of \$500 in contribution from the Village. Motion by Ames, support by Mahony to approve the contribution of \$2000.00 for 1997 to the Manchester Township Library. After discussion, the motion was tabled until Ames could get an analysis of pa-

tronage, budget and salaries from the library. It will be an agenda item for the December meeting.

SHERIFF REPORT - Sgt. Haensler was present to go over his report for October, 1997. Council asked for a breakdown on the type of crimes investigated in the Village and the location of traffic stops and citations so that they can be compared to last year's survey. Motion by Ames, support by Way to approve the Sheriff Report for October, 1997 as presented. Vote: Ayes-all.

W A S H T E N A W COUNTY SHERIFF DEPT. 1998 CONTRACT- Bechtel expressed an interest in meeting with the Sheriff and the Sheriff Committee in the near future to review the contract. Ames was curious about the increase in projected costs for services. She would like a breakdown of what constitutes the increase. Wallace will set up a meeting with the Committee and Sheriff.

Motion by Bechtel, support by Ames to adjourn as Council and convene as Zoning Board of Appeals at 7:38 PM. Vote: Ayes-all.

JOHNSON VARIANCE PUBLIC HEARING The public hearing was opened and closed without any public comment.

Scott Johnson of 415 City Road was present to request a rear and side yard set back variance to allow him to build a garage on his property. Motion by Way, support by Mahony to approve the variance, allowing a setback from 35' to 15' in the rear yard and from 10' to 7' on the side yard setback at 415 City Rd. Vote: Ayes-all.

Motion by Bechtel, support by Marshall to adjourn as ZBA and reconvene as Council at 7:57 PM. Vote: Ayes-all.

OLD BUSINESS RIVER RIDGE DEVELOPMENT AGREEMENT - Council reviewed the proposed agreement and the comments made by the Village Planner and Attorney. Motion by Bechtel, support by Marshall to adopt the agreement between Edgewater Associates, L.L.C., dba River Ridge PUD and the Village of Manchester and to include all items; manager's letter dated 10-28-97, Final PUD Site Plan review by Carlisle/Wortmann Assoc., Village Planners and Manchester Planning Commission minutes of 10-28-97. Vote: Ayes-all.

Motion by Bechtel, support by Way to adjourn at 9:03 PM. Vote: Ayes-all.

Karen Tucker
Village Clerk

From the
Michigan State
Police
Ypsilanti Post

Manchester
Detachment

THANKS!

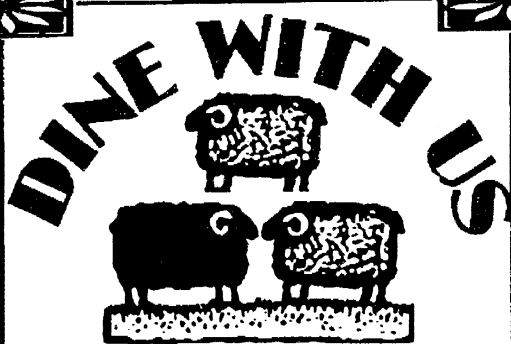
to area residents
For the safe
holiday
weekend.

Adrian Symphony Orchestra presents
A Magical Christmas Pops
Sunday, Dec. 7, 5 pm
Dawson Auditorium, Adrian College
Featuring
The Magic of
Stuart and Lori!
This concert is sponsored by
Bank of Fenwick
Citizens Gas
Fuel Company
WABT-Q95
Special Manchester Offer!
Buy 1 ticket, get 2nd of equal
or lesser value FREE!
517-264-3121 Tickets

Pleasant Lake
Hardware & Services
11509 Pleasant Lake Rd.
428-8733
**FRESH CUT
CHRISTMAS
TREES**
Blue & White Spruce,
Douglas Fir and Scotch Pine
Mon - Sat, 9 - 6
Sun, 11 - 3

1997 Limited Editions of Manchester Ornaments
Available *only* while supplies last. For sale at various locations throughout Manchester

Sponsored by Chamber of Commerce. Proceeds help pay for Christmas lights downtown.



Black Sheep
Tavern Restaurant

Seafood, Steaks, Pasta
Daily Specials
Homemade Soups

Tues-Thurs 11-9 Fri & Sat 11-10
Sunday Brunch 11-2
115 E. Main St., Manchester

Fine dining in a
smoke-free environment

BB Crafts

201 E. Main St., Manchester 428-1050

*Beanie Baby Accessories

*Handcrafted wood items

*Decorator pillows

*Hand Decorated Shirts,

Totes & Aprons

(Special Orders Available)

Register to win a FREE BEANIE BABY!

1st place - Tuffy the terrier

2nd place - Hoppity the pink bunny

(1 entry form with each \$10.00 purchase.)

Located in the Lower Level of the Mill with:

The Pathway Home, Mommy I Need That...

& The D.A.M. Coffee Shoppe

bbcrafts@lni.net http://expage.com/page/bbcrafts

VIDEO WORLD

Holiday Hits

* My Best Friend's Wedding

* ConAir

* A Simple Wish (great family film)

* Spawn

* Out To Sea (comedy)

Gift Certificates Available

Great Stocking Stuffers!

327 W. Main • 428-1990

Hours: Mon Noon-10;

Tues-Thurs 1-10pm;

Friday 11-11pm Saturday 1-11pm

Sunday 12 noon-9pm

Holiday Linens - Cookie Cutters - Santa and Bayberry Candles

The 18th Century Shoppe

Celebrating 10 wonderful years on Main Street!

Sandy Trolz, Shopkeeper

Stop in and see us for holiday gift giving.

LIMITED EDITION

MANCHESTER CROCKS (36)



For your shopping convenience, we will be open every day through Christmas Eve.
Monday-Saturday 10am-6:00pm
and Sunday 12-5

122 E. Main St. 428-7759

Nancy Thomas Folk Art

Personalized Manchester Cocks, "Old World Christmas" Ornaments

HOLIDAY GIFT PARADE

* Wooden Christmas Nutcrackers

* Angel Tree Toppers * Crystal

Snowman Pins * Revolving Musical

Christmas Trees * Porcelain Santas

* Snowmen Candleholders * Satin

Christmas Stockings * Precious

Moments Collectibles * Seraphim

Classics Angels * Fontanini Nativity

Sets * Snowglobes * Cherished

Teddies Collectibles * Winnie the Pooh

Collection * Carousel Treasures

* Sprinkles Collectibles

* Limited Edition Christmas Plates

* Dreamsicles Collectibles

* Boyd Bears * Suncatchers

* Coca-Cola Collection

* Christmas Frogs * Snowmen Dolls

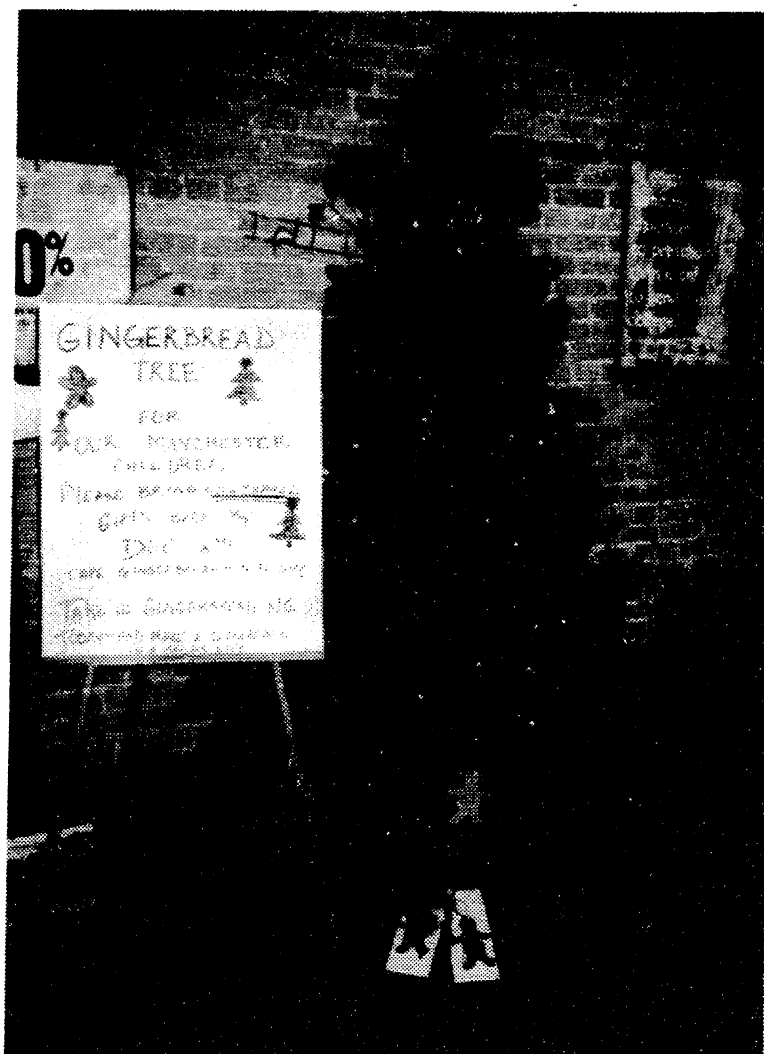
MANCHESTER PHARMACY

128 E. Main St. * (313) 428-8393

Mon-Fri 9-6:30 * Saturday 9-5

Around Town

Opportunities for Holiday Giving



The "Angel Tree" at Chapters and Verses and the "Gingerbread Tree" which is an annual tradition at Great Lakes National Bank, are both opportunities to share in the Christmas spirit.

The Angel Tree promotes purchasing books for Christmas. Chapters and Verses will discount the books and place them under the tree, to be delivered to Family Service's Christmas list recipients. (below, left)

On The Gingerbread Tree, you can choose to purchase clothes or toys for a young person on Family Service's gift list. (at right)

The Warming Tree at First of America will provide hats and mittens for Manchester's children (see page 16).

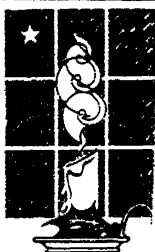
And the Family Service Christmas shop on December 10 will coordinate all these efforts for community giving at this special time of year.(below)

Join with the rest of the Manchester community in wishing Happy Holidays to those who need our assistance this year.



Jefferson Art Studio

**Open Saturdays thru
Christmas 9 - 4
4371 Lima Center Rd.
North of Pleasant Lk. Rd.
in Free Township**



MANCHESTER FAMILY SERVICE CHRISTMAS SHOP

St. Mary's Parish Center, 106 E. Madison
Wednesday, December 10th
9:00 AM - 1:00 PM

Needed:

New Toys and Games (Not Wrapped)
Winter Jackets, Coats, Boots, Hats, and Gloves
Blankets, Sheets, Toiletries

Bring donations Tuesday, Dec. 9th, 10 AM-5 PM
Anyone interested in “adopting” a family or senior,

Call Pat Smith (for a family), 428-8852 or Lucile Uphaus (for a senior), 428-8403

**DAN'S
WESTSIDE
AUTOMOTIVE**

660 W. Main St.
428-9455



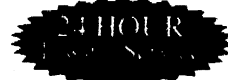
WINTERIZE SPECIAL - \$39.⁹⁵

Cooling System service includes up to 2 gallons of antifreeze.

Inspection includes: Battery, Belts & Hoses, Windshield Blades, Ignition system, Exhaust system and Tires



Mon - Fri 8:00 - 6:00 Sat 9:00 - 1:00
Free Pick up and Delivery Service

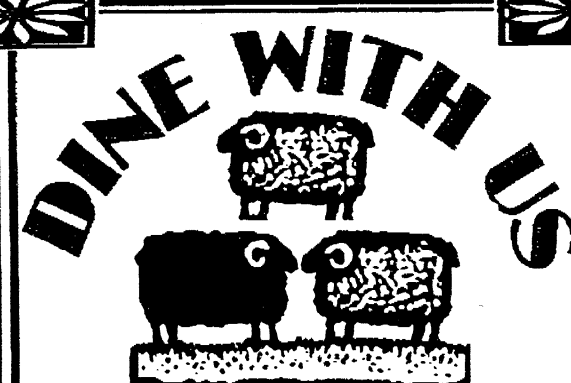


Christmas in the Village of Manchester continues

1997 Limited Editions of Manchester Ornaments Available *only* while supplies last. For sale at various locations throughout Manchester

Sponsored by Chamber of Commerce. Proceeds help pay for Christmas lights downtown.

Sarah Elizabeth Walkowe giggled and posed for the artist at the All-Churches Craft and Bake Sales Bazaar during Christmas in the Village, November 22nd. Sarah, who will be one year old on January 3rd, is the daughter of Anne and Bill Walkowe of Manchester.



Black Sheep Tavern Restaurant

Seafood, Steaks, Pasta
Daily Specials
Homemade Soups

Tues-Thurs 11-9 Fri & Sat 11-10
Sunday Brunch 11-2
115 E. Main St., Manchester

Fine dining in a smoke-free environment

BB Crafts

201 E. Main St., Manchester 428-1050

*Beanie Baby Accessories

*Handcrafted wood items

*Decorator pillows

*Hand Decorated Shirts,

Totes & Aprons

(Special Orders Available)

Register to win a FREE BEANIE BABY!

1st place - Tuffy the terrier

2nd place - Hoppity the pink bunny

(1 entry form with each \$10.00 purchase.)

Located in the Lower Level of the Mill with:

The Pathway Home, Mommy I Need That...

& The D.A.M. Coffee Shoppe

bbcrafts@lni.net http://cxpage.com/page/bbcrafts

VIDEO WORLD

Holiday Hits

* My Best Friend's Wedding

* ConAir

* A Simple Wish (great family film)

* Spawn

* Out To Sea (comedy)

Gift Certificates Available

Great Stocking Stuffers!

327 W. Main • 428-1990

Hours: Mon Noon-10;

Tues-Thurs 1-10pm;

Friday 11-11pm Saturday 1-11pm

Sunday 12 noon-9pm

Christmas in the Village of Manchester continues



Santa Claus was a big hit with the children during Christmas in the Village November 22nd. He's pictured left in an antique sleigh on the porch of the Mill where Rick Ridenaur took photos sponsored by the Manchester Area Chamber of Commerce. We won't say who Santa is exactly, but perhaps you could ask Bill Chizmar to say Ho-ho-ho one more time.

Don't forget the Manchester Beautification Committee's

Holiday Home Decorating Awards.

Nominate your house, your neighbor's house, your friends' house. Call Amy Griffin at 428-1853, or Josie at A & J Travel 428-8307, before December 15th



Holiday Hair Styles

Marti's Salon 428-7616

• Cuts • Perms • Color • Manicures
• Ear Piercing • Eyebrow waxing

• Paul Mitchell & Nexxus products
• Paraffin hand therapy

♥ Ladies Casual Wear

♥ Nature's Medley ♥ Camille Beckman

♥ Mrs. Baker's Fragrant Candles

in Marti's Salon Gift Boutique

233 E. Main St.,
Manchester

MERRY CHRISTMAS



"Psst,
Santa,
I'd like
a gift
certificate
from

HAARER'S MEETING PLACE

Lunches & Dinners prepared from family recipes.

223 E. Main St., 428-9500

* Now taking reservations for

New Year's Eve

Tues-Thur 11-9 Fri & Sat 11-10 • Closed Sunday & Monday

VILLAGE GIFTS

Ladies, fill out our Customer Holiday Wish List, then send the gentlemen off to shop, on—

MEN'S NIGHT ONLY

Thursday Evening
December 11th
6-8:00 p.m.

* Gentlemen! Check out

the Holiday Wish List

* Free gift wrapping

* Refreshments



Peg Chizmar's Village Gifts
134 E. Main St., Manchester
428-9640
M-Sat 10-6 Sunday 12-5

Holiday Linens - Cookie Cutters - Santa and Bayberry Candles

The 18th Century Shoppe

Celebrating 10 wonderful years on Main Street!

Sandy Trolz, Shopkeeper

Stop in and see us for holiday gift giving.

LIMITED EDITION

MANCHESTER CROCKS (36)



For your shopping convenience, we will be open every day through Christmas Eve.
Monday-Saturday 10am-6:00pm
and Sunday 12-5

122 E. Main St. 428-7759

Nancy Thomas Folk Art

Personalized Manchester Crock, "Old World Christmas" Ornaments

HOLIDAY GIFT PARADE

* Wooden Christmas Nutcrackers
* Angel Tree Toppers * Crystal
Snowman Pins * Revolving Musical
Christmas Trees * Porcelain Santas
* Snowmen Candleholders * Satin
Christmas Stockings * Precious
Moments Collectibles * Seraphim
Classics Angels * Fontanini Nativity
Sets * Snowglobes * Cherished
Teddies Collectibles * Winnie the Pooh
Collection * Carousel Treasures
* Sprinkles Collectibles
* Limited Edition Christmas Plates
* Dreamsicles Collectibles
* Boyd Bears * Suncatchers
* Coca-Cola Collection
* Christmas Frogs * Snowmen Dolls
MANCHESTER PHARMACY
128 E. Main St. * (313) 428-8393
Mon-Fri 9-6:30 * Saturday 9-5

Enter our drawing for an autographed copy of Images of the Wild

by Photographers

Carl Sams & Jean Stoick

"The most elegant and striking nature book of the holidays." One entry for each purchase

Manchester's Book & Music & More Store Chapters & Verses

Holiday Gift Ideas: Sheet music, books on tape, magazines, bookmarks, children's books, CDs, cassettes, journals, Smithsonian book and stuffed animal sets, music boxes, calendars, reading lights, organizers, WeeBears, pens

117 East Main Street (313) 428-0200

Excellent selection of

Harlequin Silhouette novels

Special Holiday Hours: Open Sundays 12-5

* Tues, Wed, Fri 10:30-6

* Thurs 10:30-8 Sat 9-5 (Closed Mondays)

The flavor of Christmas

Premium cocoa mixes delicious on a frosty winter day

♦ Reindeer Double Chocolate

♦ Christmas Candy Cane ♦ Santa's Egg Nog

♦ Yuletide Butterscotch

Soaps, Toiletries and Potpourri in wonderful Christmas Scents-Tannenbaum Balsam, Yuletide Bayberry, Christmas Cranberry

April Victoria products are hand-produced, naturally-scented, cruelty-free.



April Victoria

231 East Main Street, Manchester (313) 428-0400

Open Noon to 6:00 p.m. Monday through Friday

Saturdays by chance



233 E. Main St.,
Manchester

Holiday Hair Styles

Marti's Salon 428-7616


- Cuts • Perms • Color • Manicures
- Ear Piercing • Eyebrow waxing
- Paul Mitchell & Nexxus products
- Paraffin hand therapy

♥ *Ladies Casual Wear*

♥ *Nature's Medley* ♥ *Camille Beckman*

♥ *Mrs. Baker's Fragrant Candles*
in Marti's Salon Gift Boutique

ne Manchester
a Committee's
decorating Awards.
ur neighbor's house, your
riffin at 428-1853, or Josie
7, before December 15th



CHRISTMAS

*"Psst,
Santa,
I'd like
a gift
certificate
from*

**ER'S
PLACE**

red from family recipes.
t., 428-9500
ervations for
r's Eve

• Closed Sunday & Monday



*Ladies, fill out our Customer
Holiday Wish List, then send
the gentlemen off to shop, on—*

MEN'S NIGHT ONLY

**Thursday Evening
December 11th
6-8:00 p.m.**

- ★ Gentlemen! Check out
the Holiday Wish List
- ★ Free gift wrapping
- ★ Refreshments



Peg Chizmar's Village Gifts
134 E. Main St., Manchester
428-9640
M-Sat 10-6 Sunday 12-5



The flavor of Christmas

Premium cocoa mixes delicious on a frosty winter day

- ◇ Reindeer Double Chocolate
- ◇ Christmas Candy Cane ◇ Santa's Egg Nog
- ◇ Yuletide Butterscotch

Soaps, Toiletries and Potpourri in wonderful Christmas Scents—
Tannenbaum Balsam, Yuletide Bayberry, Christmas Cranberry

April Victoria products are hand-produced, naturally-scented, cruelty-free.



April Victoria

231 East Main Street, Manchester (313) 428-0400
Open Noon to 6:00 p.m. Monday through Friday
Saturdays by chance

SUBWAY and Clark On the Go announce Coloring Contest Winner



Aaron Racine of Manchester, was the lucky winner of a three-foot sub to share with his family for an after-Thanksgiving treat. He is pictured with his prize as well as with his colored poster.

Anti-Lock Brakes? Don't Pump!

Common advice given for winter driving is to pump your brakes to avoid skidding, but if your vehicle is equipped with anti-lock brakes you need to do the opposite. Apply steady pressure - never pump your brakes.



Kirk Excavating

Sand - Gravel - Fill Dirt
Basements - Driveways

Licensed & Insured
428-7938

Dave Kirk
14180 Schleweis Road
Manchester



The "Main Man In Charge," Norm Walz, was on the job at the MHS weight room last weekend. Great Job, Norm! Thanks.

Faist- Morrow

the Place to Go
for a New or
Used Vehicle

"Where the
QUALITY
Used Cars
Are"

1500 S. Main St.
Chelsea
475-8663

Thinking about selling your home
without Realtor assistance?

We can help you save
thousands of dollars.

For valuable
recorded information
on how to sell your home by owner,
call the Legacy Residential Funding
hotline.

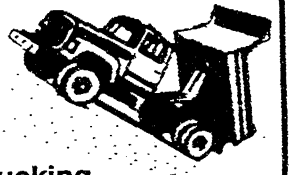
1-800-224-0827 Box 2012



Peggy Wilson
President
(313) 428-7446

Christine Deacons
Vice President
(313) 428-1448

L&B Excavating



Basements
Driveways ■ Drainfields
Grading ■ Land Clearing ■ Trucking

Bruce Lobbetael
-Licensed and Insured-

517-456-4459 ■ Manchester, Michigan

Santa's Workshop Holiday Craft Show

Saturday, December 6
10:00 - 4:00

Chelsea High School
500 E. Washington St.
Chelsea



Admission - \$2.00 * Info. 475-2275
Benefit Chelsea High School Fastpitch Softball

CLINTON FOOT & ANKLE CLINIC
301 W. Michigan Ave. • Clinton, MI
517-456-4114

Offering complete foot and ankle care for the
entire family.
- Specializing in -

Reconstructive Surgery
Sports Injury
Infant and Child Disorders
Diabetic Care
Foot and Ankle Injuries
Heel Pain
Foot Pain
Hammertoes

Laser Surgery
Warts
Ingrown Nails
Fungus
Nerve Pain
Skin Problems
Bunions
Calluses

Orthotics (Custom Casted Shoe Inserts)

DAVID R. LEVITSKY, D.P.M.

Board Certified Surgeon

Member of: American Podiatric Medical Association
Michigan Podiatric Medical Association

Hours: Tuesday/Fridays 10:00 - 5:00 p.m.

Saturdays 10:00-12:00

Please call for appointment - Most insurances accepted

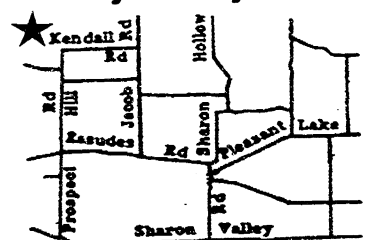
Shop Locally

Frey's Tree Farm

15356 Kendall Rd. 428-1425

Acres & Acres to choose from
Bring a Saw- ours may be busy!

Frasier Fir \$22
Douglas Fir \$22
Black Hills \$22
Blue Spruce \$22



Open Daily After Thanksgiving

DECEMBER

| | | | | | | |
|--|--|--|--|---|---|--|
| <p>7:00 Village Council 1 7:30 Library Board 7:30 Masonic bus mtg</p> <p>HAPPY BIRTHDAY, KELLY HONE (who celebrates the entire month of December!)</p>  | <p>Village Curbside 2 Recycling Noon Senior Dinner 7 Band Boosters 7:30 Freedom Two Planning Comm</p> | <p>7 Athletic Boosters - 3 high school 7:30 VFW 7:30 Raisin Valley Land Trust</p> | <p>Noon Sr Birthday 4 Dinner 7:30 Purple Heart 8 Sharon Twp Board</p> <p>Happy 63rd Anniversary, George & Mable</p> | <p>5 7:30 Kiwanis at Black Sheep</p> <p>Kleinschmidt Hardware Christmas Open House • Refreshments • Big Savings • Children's Coloring Contest December 5, 6, 7 (See page 3)</p> | <p>6</p> | |
| <p> "We LOVE this paper!" The Manchester Chronicle Good News Twice a Month located in the historic Manchester Mill Phone 428-1230</p> <p>7</p> | <p>6:30 Optimist Club 8 8 Manchester Twp Board 8 Fair Board 8 Bridgewater Twp Plan Comm 8 Knights of Columbus</p> | <p>Vilg Curbside Recyc 9 9:30am Sr Council Noon Sr Dinner 7 Computer Club at Chapters & Verses 8 Manchester Twp Planning Comm 8 Freedom Twp Board</p> | <p>7:30 American 10 Legion Aux 7:30 Recreation Task Force Manchester Family Services Christmas Shop, St. Mary Parish Center on Madison</p> | <p>Noon Sr Dinner 11 MEN'S NIGHT ONLY AT VILLAGE GIFTS. See page 7.</p> | <p> HAPPY BIRTHDAY ELLA LANDINI tomorrow December 13th</p> <p>12</p> | <p>Atlas of 13 Manchester Christmas Open House 8:30-4 • Refreshments • Door Prizes (See page 2)</p> |
| <p>Samaritan 14 Counseling Services Tree of Lights. See page 9.</p> | <p>7 Village Council 15 7:30 School Board 7:30 United Way</p> | <p>Vilg Curbside Recy 16 11:15 Sr Clergy Noon Sr Dinner 7:30 Historical Society Christmas Party at the home of Carl and Sharon Curtis. See page 10.</p> | <p>7:30 Men's Club 17 7:30 Bridgewater Twp Board</p>  <p>HAPPY BIRTHDAY, BETH BALL</p> | <p>9am Chamber Board 18 Noon Sr Dinner 7 Middle School Parents 8 Sharon Twp Planning Comm</p> | <p>19 7:30 Kiwanis at Black Sheep 20</p> | |
| <p>THANK YOU!! The Manchester Co-Op Preschool auction, held November 9th, was a huge success; over \$5,400 was raised thanks to the generous donations we received. We would like to thank all of the businesses, organizations and individuals for your continued support:</p> <p>Ann Arbor Ice Cube, Atlas Feed Store, American Soy Products, BB Crafts, Busch's Valu-Land, Burch family, Back Door Party Store, Dr. Mary Barkley, Mary Blossom, Birgy family, Borders, Deloris Brown, Liz Blossom, Calamity Janes, Chelsea Milling Co., Cueter Chrysler, Curby family, Chapters & Verses Book Store, Clark on the Go, Construction Connection, Dexter Pub, Discount Tire, Domino's, Dunsmore family, DuRussel Farms, Eden Foods, The Eighteenth Century Shoppe, Enterprise, Stu Evans Ford, Flower Garden, First of America-Manchester, Food For All Seasons, Gisting & Gisting, General Mills, Generations for Children, Jean Gorman, Global Travel-Tecumseh, K & W Equipment, Keith's Barber Shop, Kiwanis of Manchester, Kleinschmidt Hardware, Kid Kingdom, Leverenz family, Lyrick Studios, Manchester Automotive, Manchester Chronicle, Manchester Manor, Manchester Market, Manchester Pharmacy, Manchester Plastics, Manchester Sportsman Club, Manchester Tool & Die, Manchester Veterinary Clinic, Mark's Garage, Marti's Salon, Maid in America, Max & Erma's, McDonald's, Mommy I Need That, Mongolian Barbeque, O'Hara-Clinton, Pinetree Spa, Play It Again Sports, Pleasant Company, Pleasant Lake Hardware, Reddeman Farms Golf, Chris Roberts-Antieau, S & K Sales, Sahakian family, Simon & Schuster, State Theater, Sweet Lorraine's Cafe, Somewhere in Time, Tom Smith, Subway-Saline, Teresa's Ceramics, Thompson family, Toledo Zoo, Town & Country Cyclery, Uniglobe, United Artists, Walt Disney Co., Weber's Inn, Wild Swan, White Rabbit, Withrow family; and special thank you to our auctioneer, Breeda Miller, St. Mary Catholic Church and Emanuel United Church of Christ — and many other friends and families of the Manchester Co-Op Preschool.</p> | | | | | | |
| <p>Woodbrook ENTERPRISES INC</p> <p>50% OFF UPS SHIPPING</p> <p>"Your Hometown Computer Store" — and more!</p> <p>231 E. Main Street • Manchester PH: 428-7011 • FAX (313) 428-7955</p> <p>offer expires 12-31-97</p> | | | | | | |

BUSINESS DIRECTORY



Sula Darlene Jeffers

Attorney at Law
150 E. Main St.
P.O. Box 625
Manchester, MI 48158

(313) 428-8190

JUDY FAHEY
RICHARD FAHEY

FAHEY Realty

215 E. Main Street
Manchester, MI 48158

OFFICE: 313-428-9298
RES: 313-428-7188

Typewriter, Fax & Calculator Repairs

—Free Estimates—
LAMINATING SERVICE
NOW AVAILABLE
- UPS SHIPPING -
Photocopies 10¢
PYRAMID OFFICE SUPPLY

106 E. Main St., Manchester
Phone: (313) 428-8963
FAX: (313) 428-8088
Hours: M-F 9am-5pm
Saturday 9am-1pm

Cevin's Collision

• Paint Jobs • Welding
• Frame Work
• Windshields • Stripes
• Sand Blasting
• Undercoating
FREE estimates
FREE Pick up and delivery

517-522-4755

M-F 8am-5pm Saturday 9am-12

AUTOMOTIVE SERVICE EXCELLENCE



4520 Wolf Lake Rd., Grass Lake

BENEDICT PAINTING

• Interior
• Exterior

15 years experience
Free estimates

517-536-4812

Suzanne's Interiors

Located in the Mill
201 E. Main St.

Home: 428-9193
Office: 428-0228

Service in homes
• Draperies • Bedspreads
• Feathered Beds
• Down Comforters & Pillows
• Verticals • Mini-Blinds
• Pleated & Laminated Shades

The Village Laundry

Hours:
Sunday-Wed. 8am-8pm
Thursday 8am-9pm
Friday & Saturday 8am-6pm

428-7175



• Printing • Typesetting
• Business Forms
• Wedding Stationery

102 S. Main St., Chelsea

(313) 475-3210
(800) 968-6888
FAX (313) 475-1177

BAPTIST CHURCHES

NORTH SHARON BAPTIST CHURCH - Bobby D. Toler, Pastor; Tim Butterfield & Robert Burton, Assistant Pastors, Sylvan & Washburn Rds - 428-7222; SS 10 AM; Morning Church 11 AM; Eve Church 7 PM; Weds Bible Study & Youth Mtg 7:30 PM
VICTORY BAPTIST CHURCH (GARBC) - Rev. Jon King, Pastor; 419 S. Macomb, 428-7506, Sunday School 9:45 AM; Morning Worship 11 AM; Evening Worship 6 PM; Wednesday Bible Study & Prayer 7 PM

CATHOLIC CHURCH

ST. MARY CATHOLIC CHURCH - Rev. Fr Charles Irvin, Pastor; Telephone 428-8811; Masses: Monday thru Wednesday, Friday 8:30 AM; Thursday, 7 PM; Saturday 5 PM; Sunday 8:30 & 10:30 AM

EPISCOPAL CHURCH

ST. BARNABAS EPISCOPAL CHURCH - Rev. Jerrold F. Beaumont, OSP, MTh, DD; 20500 Old US-12; **Chelsea**; 475-8818; Worship Sundays at 10 AM

LUTHERAN CHURCHES

OUR SAVIOR LUTHERAN CHURCH - (Missouri Synod) Rev. Dale Grimm, Pastor - 1515 S. Main, **Chelsea**; 475-1404; Heritage Service 8:15 Contemporary Worship 10:30 AM Sundays
ST. JOHN'S LUTHERAN CHURCH - Rev. Erling Aaserud, Pastor; Austin Road, **Bridgewater**; 429-7434 Sunday School 9:15 AM; Worship 10:30; various mid week & Bible Study groups
ST. THOMAS LUTHERAN CHURCH - Rev. John Kayser, pastor; 10001 W. Ellsworth Road (5 miles north and 6-1/2 east of Manchester); 663-7511; Sunday School 9:30 AM; Worship 10:45
ZION LUTHERAN CHURCH - Pastor David Hendricks; 3050 S Fletcher Rd., **Chelsea**; 475-8064; Summer Worship 9:30 AM

UNITED METHODIST CHURCHES

MANCHESTER UNITED METHODIST CHURCH - Rev. Thom Davenport, Pastor; 501 Ann Arbor St. Parsonage 428-8013; church 428-8495. Sunday School, 9 AM, Worship 10:30 AM
SHARON UNITED METHODIST CHURCH - Rev. Peggy Paige, Pastor, Corner M-52 and Pleasant Lake. Parsonage 428-8430; church, 428-7714; Sunday School 10 AM, Worship 11 AM

MORMON CHURCH

CHURCH OF JESUS CHRIST OF LATTER DAY SAINTS (MORMONS) - Gary Spooner, Branch Pres; 1330 Freer Rd., **Chelsea**, 475-1778; Sacrament 9:30 AM; Sunday School, 10:40; Relief Soc, Priesthood & Youth 11:40

NON DENOMINATIONAL CHURCHES

COMMUNITY BIBLE CHURCH - Pastor Jody Riethmiller; 8400 Sharon Hollow Rd., 428-8709; Worship 10 AM; Sunday School 11:30 AM; Wednesday Bible Study & Prayer 7:30 PM. All are welcome!
IRON CREEK COMMUNITY CHURCH - Tom Butterfield, Pastor; English & Sharon Hollow Rds.; Sunday School 10 AM; Morning Church 11 AM; Sunday Evening 7 PM
CLINTON ASSEMBLY OF GOD - Rev. Richard Coury; 13300 Clinton Manchester Rd; 517-456-7510; Sunday School 9:30 AM; Worship 10:45; Sunday Eve 6:30; Weds Prayer, Bible Study, Youth 7 PM

UNITED CHURCH OF CHRIST

BETHEL UNITED CHURCH OF CHRIST - Rev. Richard E. Hardy, minister - 10425 Bethel Church Rd. at Schneider, Parsonage & Church 429-7155/428-8000; Church Service 9:30 AM
EMANUEL UNITED CHURCH OF CHRIST - Rev. Dr. Vincent Carroll, Pastor 324 E. Main; 428-8359; Sunday School 9:15 AM; Worship 10:30 AM; Fellowship 11:30 AM
ST. JOHN'S UNITED CHURCH OF CHRIST - Rev. Dr. Nancy M. Doty, Pastor; 12376 Waters Road at Fletcher, **Rogers Corners**; Worship & Sunday School 9:30 AM

UNITY CHURCH

UNITY CHURCH OF JACKSON - 3385 Miles Road, Ackerson Lake, **Jackson**, 517-764-6900; 11 AM Sunday Services & Sunday School

MANCHESTER UNITED METHODIST CHURCH

Wednesday, December 3:
7:30 PM Bible Study
Thursday, December 4:
7:00 PM Nurture/Membership Committee
Friday, December 5: 7:00 PM UMYF meet at church for outing to Adrian
Saturday, December 6:
8:00 AM UMM; 10:00 AM Kid's Christmas Pageant Practice
Sunday, December 7: 9:00 AM Sunday School; 10:30 AM Worship - Youth Christmas Pageant; 11:45 AM Choir Practice; 12:00 Noon UMYF; 6:00 PM DISCIPLE Bible Study
Monday, December 8: 4:00 PM Scouts
Tuesday, December 9:
6:00 PM Scouts
Wednesday, December 10: 7:00 PM Bible Study

EMANUEL UNITED CHURCH OF CHRIST

Wednesday, December 3:
1:00 PM Emanuel Quilters; 5:30 PM Jazzercise; 6:30 PM Bell Choir; 6:30 PM Girl Scouts; 6:30 PM Women of Emanuel Christmas Potluck; 7:00 PM Basket weaving; 7:00 PM Board of Christian Education; 7:30 PM Adult Choir
Thursday, December 4:
9:30 AM Jazzercise; 12 Noon Sr. Meal; 6:30 PM Worship; 7:00 PM Bible Study; 7:30 PM Volleyball
Friday, December 5: 5:30 PM Wedding Rehearsal; 7:00 PM AA
Saturday, December 6:
8:30 PM Set Up for Live Nativity; 9:00 AM Optimists Christmas Party; 9:30 AM Jazzercise; 2:00 PM Wedding
Sunday, December 7: 9:00 AM Sunday School; 10:30 AM Communion Worship Service; 11:39 PM Fellowship Time; 11:45 AM Confirmation Class Field Trip
Monday, December 8: 5:30 PM Jazzercise; 6:30 PM Optimists; 7:00 PM Board of Mission/Stewardship; 8:00 PM Fair Board
Tuesday, December 9:
8:45 AM School meeting; 9:30 AM Jazzercise; 12:00 PM Sr. Meal; 6:30 PM Cub Scouts; 7:00 PM Boy Scouts; 7:00 PM Country Dance

BETHEL UNITED CHURCH OF CHRIST

Wednesday, December 3:
12:00 PM Women's Fellowship Potluck
Thursday, December 4:
7:00 PM Youth Choir
Saturday, December 6:
11:30 AM Orchestra
Sunday, December 7: 9:30 AM Worship Service - Orchestra; 10:30-11:45 AM Sunday School
Monday, November 8:
7:00 PM Cantata Rehearsal
Wednesday, December 10: 7:00 PM Women's Circle

ST. JOHN'S UCC, ROGERS CORNERS

Sunday, December 4: 9:30 AM Worship & Sunday School

ST. JOHN'S LUTHERAN, BRIDGEWATER

Wednesday, December 3:
Junior & Bell Choirs, 6:30; Midweek Advent Service, 8 PM; Sr. Choir, 9 PM
Saturday, December 6:
Decorate Church/Set up trees, 10 AM
Sunday, December 7:
9:15 AM Sunday School; 10:30 AM Worship Service with Junior Choir musical; Fellowship Circle 12 Noon
Monday, December 8: Elders Bible Study, 8 PM
Wednesday, December 10: Junior & Bell Choirs, 6:30; Midweek Advent Service, 8 PM; Sr. Choir, 9 PM

ST. THOMAS LUTHERAN CHURCH

Wednesday, December 3:
7:30 PM Advent Service
Saturday, December 6:
8:30 AM Confirmation Class
Sunday, December 7: 9:30 AM Sunday School and Bible Class; 10:45 AM Worship Service
Tuesday, December 9:
6:30 PM Evangelism Meeting
Wednesday, December 10: 7:30 PM Advent Service

COMMUNITY BIBLE CHURCH

Thursday, December 4:
Awana Clubs for children ages 4-6th grade 6:30-8:30 PM

Sunday, December 7: 10:00 AM Worship; 11:30 AM Sunday School

ST. MARY CATHOLIC CHURCH

Thursday, December 4: 5-6:30 PM Cub Scouts Meeting - Church hall
Friday, December 5: 3:30-4:45 PM Children's Choir
Sunday, December 7:
Adult Choir, 9:30 & 11:30; 10:30 AM Pre/K; 2:00 PMA Christmas Story - LIVE at Parich Center; 6:30 PM Teen Mass
Monday, December 8:
8:00 PM K of C Business Meeting
Tuesday, December 9:
3:30 PM Religious Education Mass for Grades 1-8
Wednesday, December 10: 7:00 PM BeFriends Meeting

SHARON UNITED METHODIST CHURCH

ZION LUTHERAN CHURCH

Wednesday, December 3:
7:30 PM In Depth Bible Study
Thursday, December 4:
7:30 PM Advent Alternative Service at Old Zion
Friday, December 5: 10-3 PM Bake Sale at Chelsea Retirement Community
Saturday, December 6:
10-12 Noon Christmas Program Practice; 11:30-8 PM Spaghetti Dinner to benefit Megan Krull at Our Savior
Sunday, December 7:
Deadline for Mittens! 9:00 AM Sunday School; 10:15 AM Worship with Holy Communion
Monday, December 8: 7:00 PM Worship & Music; 7:00 PM Property
Tuesday, December 9:
7:30 PM Senior Choir
Wednesday, December 10: 7:30 PM Church Council

The Church Page is brought to you by these generous sponsors:

| | | | | |
|--|---------------------------|----------------------------------|---|--------------------------------|
| Duke & Barb Schaible | | Manchester Plastics | Wacker's General Store | Gene DeRossett |
| PILOT METAL PRODUCTS A Division of Pilot Industries | ALBER ORCHARDS | DR. CHARLES LYON, D.O. | | Manchester Tool & Die |
| David Chartrand | Norm & Olga Walz | MAID IN AMERICA® | HENDLEY & DATSKO, P.C. Attorneys at Law | Manchester Chiropractic Clinic |
| Kim's Kountry Kitchen | S-K Sales, Inc. | Kiwanis of Manchester | Harold Buss | |
| THE MANCHESTER ENTERPRISE | Manchester Manor | | Gene & Gertrude Smith Pinnacle Engineering | Hunter's Meeting Place |
| MANCHESTER CAR WASH | Dan's Westside Automotive | Kleinschmidt True Value Hardware | | Clark & Penny Getty |

December Bulletin Board

Classifieds ♦♦♦ Announcements

♦♦♦ Coming Events

ANTIQUES

Manchester Antique Mall
35 Dealers. Open 7 days 10-5
116 E. Main St. 428-9357

SIGNS

Truck Lettering: Boats, windows, vehicles. Signs: Wood, plastic, metal or magnetic. Arnie's Lettering, Munnith (517) 596-3243

WANTED TO BUY

Old Manchester Postcards:
Phone 428-7759 or 428-7060.

VIOLIN LESSONS?

A small group of Manchester families is hoping to attract a violin teacher to the immediate area. If you and your children are interested, please call Janine Falk at 428-7867 by December 20th.

Final Sale Days at Quilter's Quarters
in downtown Chelsea
up to 60% off
everything in the store!

• Fabrics • Notions • Patterns
Having lost our lease, we will close December 19th.

PIANO TUNING

Piano Tuning and Repair: 18 years experience. Ronald Harris, piano technician. 475-7134

Profile Fitness Certified Personal Training for Women.

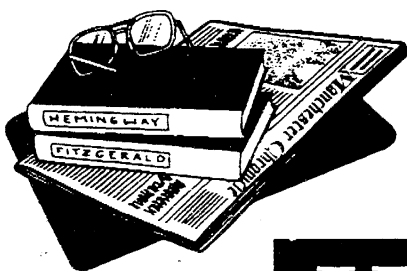
My Manchester home or yours. Easy payment options. Free consultation --- limited time. Correspondence courses available. Discount on Polar Heart Rate Monitors. Pager/Voice Mail 313/370-1073

SANTA'S SLEIGH FOR SALE

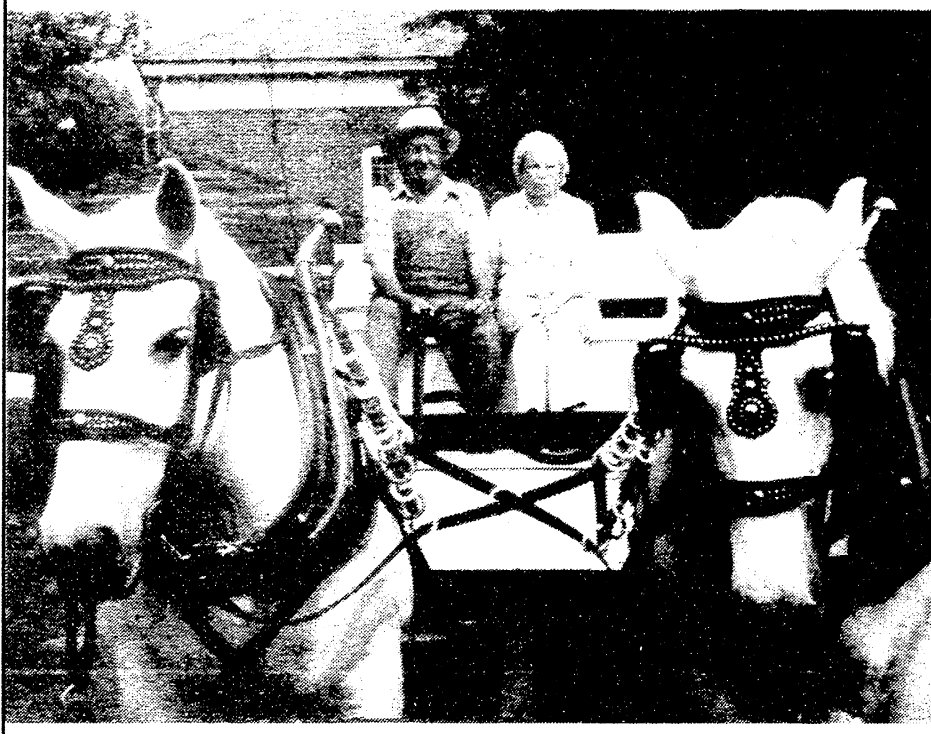
Restored one-horse sleigh, red with black upholstery and brass trim. See photo page 7. Ph: 428-1230.

Nordic Track

Cross-country exercise machine. country is rated the best overall exercise. Can be seen in lower level of the Mill, or phone 428-1230.



Happy 63rd Anniversary, December 4th George & Mabel Macomber



RAYMOND P. HOWE, D.D.S., M.S.

ORTHODONTIST

20 years experience

No referral necessary

**515 S. Main St.
Chelsea**

(313) 475-2260



Samaritan 8th Annual Tree of Lights

One of the loveliest traditions this time of year in Manchester is the Samaritan Counseling Center's Tree of Lights. A beautiful Christmas tree is placed by volunteers in the Gazebo on West Main Street, and lights placed on the tree in memory of loved ones.

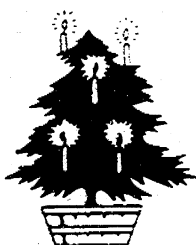
For a minimum contribution of \$3, you may purchase a light for the tree and memorialize a friend or loved one. A card is sent to those remembered or their families, and the name, if received before December 12, is read aloud during the brief ceremony, and entered into the Book of Honor. The Tree of Light remains lit through January 6, 1998.

Monies raised from contributions enables Samaritan Counseling Center to offer assistance to those in Manchester who need and seek a religious based counseling program.

The tree lighting ceremony is set for Sunday, December 14, at 5:30 PM in Emanuel Church Sanctuary, after which we will proceed to the Gazebo and light the tree.

If you wish to make a donation for a light, please send your check made out to Samaritan Counseling Center to Emanuel Church, P.O. Box 415, Manchester, MI 48158-0415. If you have any questions, please phone 428-8359.

Please join us for annual tree lighting ceremony, Sunday, December 14 at 5:30 PM, at Emanuel.

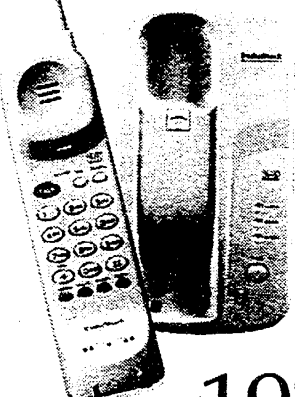


**Remember a loved one
by adding a light to the
Tree of Lights**

**Ceremony: Sunday, December 14
at Emanuel Church Sanctuary, 5:30 PM**

Tree lighting follows at Gazebo
Minimum donation \$3 for the
Samaritan Counseling Center
Phone 428-8359 for further information.

HOLIDAY SAVINGS on great stocking stuffers from The Shack®



49⁹⁹

28% OFF
**Cordless phone
for desk or wall**

25 channels for incredible sound. Digital coding provides call security. 10-number speed dialing. reg. 69.99 #43-1049

19⁹⁹

20% OFF

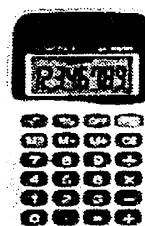
**AM/FM
stereo headset**
Great for jogging! Extended Bass for low-frequency impact. Double headband design for a secure fit. reg. 24.99, #12-919



19⁹⁹

33% OFF
**Light-up 4-in-1
remote**

Large illuminated buttons for channel surfing in the dark! Operates TV, VCR, cable box and one other component. Easy to set up. reg. 29.99 #15-1911



4⁹⁹

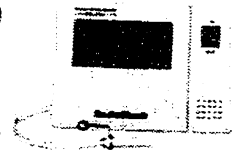
50% OFF

**Compact calc
with big display**
Easy to read and fits in your pocket! 3-key memory, square root and percent keys. Dual powered. reg. 9.99, #65-921

10⁹⁹

31% OFF
**Easy-to-read
thermometer**

Flip a switch to see inside or outside temperature. Extra-large display. Includes battery. reg. 15.99 #63-1005



17⁹⁹

28% OFF
**Pocket digital
multimeter**

Check audio and AC cords, fuses, outlets, and switches. Measures AC/DC volts and resistance. reg. 24.99 #22-179

2⁹⁹

25% OFF
**Cordless pencil
sharpener**

Compact for easy portability. Includes spare blade. reg. 3.99 #61-2768 Requires 4 "AA" batteries



**A RadioShack® Dealer
ELECTRONICS ACE**
Tecumseh Plaza
1428 West Chicago Blvd
Tecumseh, MI 49284
(517) 423-9766



RadioShack.

You've got questions. We've got answers.®

Sale prices good through 12/24/97. Prices apply at participating Radio Shack stores. Items not available at a participating store can be special-ordered (subject to availability) at the advertised price. A participating store will offer a comparable value if the product is sold out. Independent Radio Shack dealers and franchisees may not be participating in this ad or stock or special-order every item advertised.

Benefit Dinner Planned

Our Savior Lutheran Church, located at 1515 South Main Street in Chelsea, is sponsoring a benevolent spaghetti meal for Megan Krull and her family on Saturday, December 6, 1997 from 11:30 AM to 8:00 PM. Megan, a three-year-old, was diagnosed with Acute Lymphocytic Leukemia in August. Aid Association for Lutherans will be matching all donations received dollar for dollar.

OBITUARY

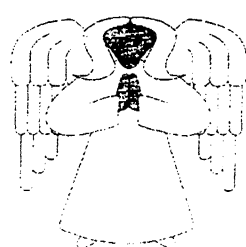
Margaret Thorp

Margaret Thorp, "Grannie" to many, passed away at her home on November 29 at the age of 94. She was born in a dugout near Colony, Oklahoma Territory, on October 4, 1903, the daughter of Alonzo and Ruby Frances Mikels.

She later lived in Oklahoma City until the death of her husband George, when she moved to Manchester, Michigan.

She is survived by her daughter and son-in-law, Mary and Fred Munson, granddaughter Meg (Dick) Lueker, grandsons Cal Munson, Jonathan (Beth) Munson, Nathan (Jody) Munson, and two great-grandsons, Daniel and Matthew.

There will be a memorial service at 2 PM Thursday, December 4, at the Bethel United Church of Christ in Freedom Township. Memorial contributions may be given to the Salvation Army Christmas Fund.



The Storyteller - A Christmas Play

The children of Manchester United Methodist Church invite you to share in a Christmas Story with them this Sunday, December 7, during the 10:30 AM Worship hour. "About 55 kids, from infants through teens, will be performing in 'The Storyteller,'" said Tina Zimmerman of the United Methodist Church. All are welcome.

TREE OF LIGHTS

Sponsored by Samaritan Counseling Service.

A minimum \$3 donation will add a light to honor or memorialize your loved one.

For more information contact Samaritan Counseling at 663-6671

Registration forms available at:

Local Banks, Churches, Baker's

Dozen, and Kleinschmidt's.

A card is sent to remembrance person and name read at ceremony. The tree shines thru

Epiphany 1/6/98



Come join in the lighting ceremony Sun. Dec. 14th at 5:30 pm beginning at the Emanuel Church Sanctuary with lighting following ceremony.



Don't get disturbed...See Tirb!

For New or Used Cars
See Charlie Dermyre
or Ray Tirb

TIRB

Chevrolet & Geo

Phone: (313) 428-8212 or (313) 428-8492

131 Adrian Street - Manchester, Michigan

Specialist in ORTHODONTICS

- 20 years Experience
- No referral necessary

515 S. Main St.
Chelsea, MI 48118
(313) 475-2260



Raymond P. Howe, D.D.S., M.S.

ROBERTS GLASS

Windshield Repair & Replacement

610 E. Industrial Dr.
Chelsea, MI

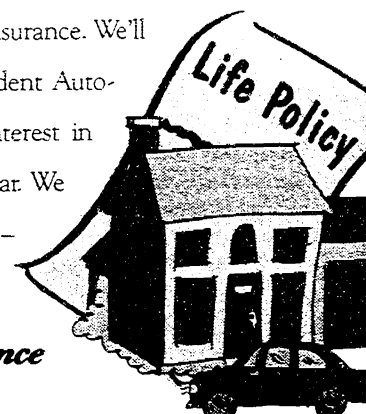
475-5811

Buy life insurance and save on your home and car.

When you buy your life insurance from us through Auto-Owners Insurance, you'll receive special discounts on your home, mobile home or car insurance. We'll save you money. As an independent Auto-Owners agent, we take great interest in you - as well as your home and car. We are specialists in insuring people - and the things they own.

Auto-Owners Insurance

Life Home Car Business
The No Problem People®



SUTTON AGENCY, INC.

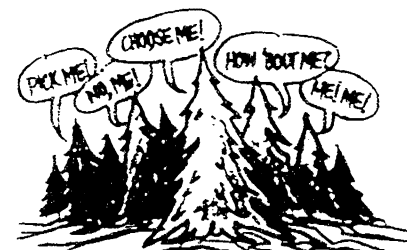
136 E. Main Street
NEW HOURS: Mon - Fri 9 to 5
(313) 428-9737

U-CUT CHRISTMAS TREES

SCOTCH PINES

Table-top
to 9 ft.

**\$16.00
EACH**



Also:

- ◇ Door Wreaths
- ◇ Swags
- ◇ Table Centerpieces
- ◇ Cemetery Wreaths

WE CAN UPS WREATHS

TREES SHAKEN & BALED
FOR KIDS OF ALL AGES —
FREE HOT CHOCOLATE
& COLORING BOOKS

Pine View Farms

10998 Hardcastle, Brooklyn, MI

(517) 592-3892

Open Tues. - Sun.: 10 a.m. to Dark

YOU ARE CORDIALLY INVITED TO

An All - You - Can - Eat Buffet

featuring

A MEATLOAF DINNER

Including Potatoes, Vegetable, Cole Slaw, Rolls and Butter, Sherbert and Homemade Christmas Cookies

Wednesday, December 10, 1997

Serving 4:30 - 7:00 p.m.

Emanuel United Church of Christ

324 W. Main Street

\$7.00 Adults \$4.00 - 5 to 10 year olds Free - 4 years old and under

These monthly dinners will be served the second Wednesday of each month featuring a different menu

Town Meeting Starts Planning the School of 2007

Wow! Now, admittedly, this is not a very objective assessment for a reporter who prides herself on objectivity, but it's the only one that applies to the town meeting that took place during the November meeting of Manchester Community Schools. After a very brief business meeting, the Board of the Education turned to the public for their visions of the district into the next century. The goal of the "town meeting" was to develop high-quality conclusions to the statement: "In 2007, Manchester Schools will be noted for...". The effort was a resounding success with lots of ideas and development of a manageable To Do list for the board, administration and community.

The school board has held town meetings in the past. The intent of these meetings was similar to the November 1997 version. The difference was in the focus and energy of this most recent effort. Past meetings have always resulted in a long — and unmanageable — list of To Dos. As well-intentioned as past attempts have been, they've missed the mark because once ev-

ery idea and variation was recorded, there was no clear starting point and no clear expected outcome. Low community participation meant no clear support for any of the proposed ideas. As a result, ideas often appeared to be ignored by the school board. While this wasn't necessarily the case, it looked that way — and these days, it's appearance that counts.

A REAL WINNER

This meeting looked like a winner from the beginning. More than sixty people decided it was worth their time to share their thoughts. The chairs in the MHS band room were arranged in a circle so everyone could see everyone else. Calling on his considerable experience in meeting management, board vice president, Joe Turk started by stating some simple rules:

- No crossed legs or arms
- Understand that everyone is different, a point he illustrated by asking several people to try to juggle several small "earth balls." Just as each of them took a different approach to keeping the balls in the air, Turk pointed out that each of us would take a different approach to reaching a goal.
- No talking until the current speaker had finished. A point that was enforced with the requirement that a speaker be holding the ball in order to talk.
- Declare yourself "IN" on the process.

Once everyone in the circle had spoken and the ideas had been documented, the large group broke into six smaller discussion groups. Each group was asked to pick no more than six of the previously documented ideas as most important to the vision of 2007.



The Manchester Area Historical Society held its regular monthly

meeting at the Blacksmith Shop on Tuesday, November 18. Mike Clinansmith presented a program on the Black Legion, an offshoot of the Klu Klux Klan. Some members of the KKK, as a protest against the Klan for not doing enough, dyed their hoods and robes black. They were ordered to get rid of them or get out of the Klan. They left and started the Black Legion. Their targets were Blacks, Jews, Catholics, and union members. They could not get started in Detroit, so they went to Hamtramck. Between 1931 and 1935, the organization spread to Pontiac, Mt. Clemens and then west. In 1936, an election year, the Jackson County Prosecutor decided to prosecute some of the Black Legion. They only got three years' probation, however, the organization was wiped out as a result of the publicity.

Mike first became interested in the Black Legion 27 years ago as a graduate student at Michigan State University. He is in the process of writing a book on it which will be published by Wayne State University Press.

The Historical Society Christmas Party will be held on Tuesday, December 16 at the home of Carl and Sharon Curtis on Sharon Hollow Rd. The public is invited.

— by Gini Patak

The discussions were lively to say the least. At the conclusion of the discussion each group described the choices that had evolved. And, finally, all attendees marked the groups' "most important" choices they concurred with. The consensus that came from this process was truly amazing, hence the WOW! assessment that opened this article.

The following items came up most often on the 2007 lists:

- Facilities: planning, improving and developing
- Partnering with the community and parents
- An expanded fine arts program

Several other ideas also received notice by more than one discussion group and will likely make the board's list of priority items which should be available shortly.

In response to several comments about apparent past inaction with regard to community ideas, Turk and superintendent Ron Niedzwiecki assured the group that this effort would suffer no such fate.

As the meeting concluded, attendees shared their thoughts on the process and the consensus that had developed. Board president Wayne Winzenz acknowledged the power of the community in a process such as this.

"The board has never been organized to deal with issues like these. It's clear that has to change. We need to get the community more involved. Be prepared to see some differences in the future."

Finally, group members declared themselves "OUT" — for now, that is.

DECEMBER MEETING

The December meeting of the Manchester Board of Education will be held at 7:30 PM on Monday, December 15, 1997. Meetings are held in the MHS media center. For more information, call the board offices at 428-9711.

This Holiday Season Give Your Home a Gift

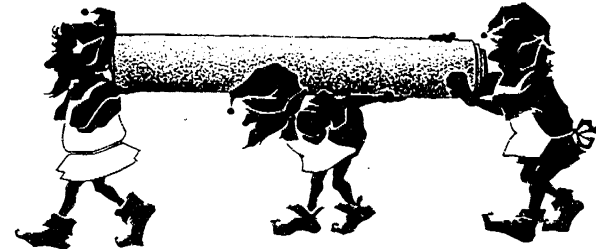


Transfer any room into a cozier space with carpeting



MANCHESTER FLOORS

230 E. Main Street, Manchester
(313) 428-1910 Open Mondays 10am-7pm
Tues-Fri 10-5:30 Saturday 10-3



Santa's Sleigh is a Chevrolet

A good selection
of new and used cars on our lot.

TIRB CHEVROLET & GEO

131 Adrian Street, Manchester
Phone: (313) 428-8212
or 428-8492



Manchester Township Library News

— by Ann Fowler

Welcomed Responses

In November, many residents made important decisions affecting your Manchester Township Library.

More than forty individuals attended a meeting to organize a "Friends" group to help the Library Board publicize the Library, volunteer time for routine tasks at the Library, and help raise funds.

More than one hundred supporters responded to the annual fund-raising letter and many friends also contributed to memorials for local residents, including former Librarian Mary Boutell, and avid reader Lehman Wahl.

Patrons have "adopted" eleven authors, agreeing to purchase for the Library — at special library rates — the authors' works. Still waiting for adoption are the popular Sandra Brown, Tom Clancy, Mary Higgins Clark, Dean Koontz, Larry McMurtry, and others.

A practical Christmas gift for someone who has everything is a contribution "In honor of...". The book will have a book plate identifying both honoree and honoror.

Buying or Selling a Home?



- 30 years sales experience
- Including 16 years in retail banking sales
- BBA in Marketing
- Affiliated with top broker in Washtenaw County

Mark VanBogelen

(313) 428-0738

(313) 677-4300

2160 Huron Parkway
Ann Arbor, MI 48104



ANDERSON
ASSOCIATES

Poinsettias

Poinsettias Prevail!

Rarely do you stop to think about how that red-and-green potted poinsettia came to be in your living room. True, it probably arrived by car or delivery van from the florist's, the nursery, or the supermarket, but go back farther than that and think about how a fragile plant from the Mexican desert found its way into nurseries and living rooms across the United States and around the world, how nearly all of them come from the same source, and why, just because the poinsettia is red and green, we should even think of it as a symbol of Christmas.

Poinsettias (*Euphorbia pulcherrima*) are indigenous to Mexico and Central America, where they flourish in the highlands near the Mexican town of Taxco de Alarcon. The warm weather-loving plants, which favor moist, well-drained soil and indirect but plentiful sunlight, are most often found in wooded ravines or rocky hillsides.

Poinsettias have ordinary leaves as well as modified leaves called bracts that turn from green to crimson in response to the lengthening nights that accompany the approach of winter. At the center of the radiating bracts lie tiny golden blossoms, the plants' true flowers.

Wild poinsettias are much leggier, larger plants than their potted cousins and grow as tall as 16 feet. They also have longer,

narrower leaves and bracts than commercial varieties, whose foliage tends to be oak leaf shaped.

The name poinsettia comes from Joel R. Poinsett, a U.S. statesman and amateur botanist who, among other things, helped found the National Institute for the Promotion of Science and the Useful Arts, a forerunner of the Smithsonian Institution. During the 1820s, Poinsett served as a diplomat and then as the very first U.S. Minister to Mexico, where he came upon the vibrant red-and-green plant. When he returned to his home in South Carolina in 1829, Poinsett brought with him samples of the plant to which he lent his name and grew them in his greenhouses and casually distributed them among friends and colleagues.

The fragile, temperamental poinsettia was little more than a curiosity in the East and a simple fresh flower in the West until, 90 years later, Los Angeles farmer Paul Ecke began developing a poinsettia cultivar that could survive as a potted indoor plant.

While the original plants sold fresh or were used for landscaping in California, they weren't especially hardy and shipped poorly. The bracts were narrow and tended to fall off during or soon after transport, and most bloomed too early for use at Christmas. Ecke developed the cultivar 'Early Red', which held its foliage better, and soon after,

in 1920, developed 'Hollywood', a sturdy variety with much wider leaves. 'Hollywood' made the poinsettia a viable potted plant for the holidays.

In 1923, the Ecke family moved its operations south from Hollywood to Encinitas, Calif., in order to escape the increasing crowding of Los Angeles and also to be close to a good water supply and a railroad siding. Here, Paul Ecke faced a new challenge: He had created a plant that could survive transport outside the Southwest; now he had to create a demand for it.

Before that time, poinsettias were not associated with Christmas in any way. Although some accounts claim that Franciscan priests in Mexico first incorporated the plants into a Nativity procession in the 17th century, the custom was unknown throughout the rest of the world. Similarly, a mythical story about the poinsettia's origins most likely came into being after Paul Ecke made the plant into a Christmas standard: The fable tells of a poor Mexican girl on her way to church on Christmas Eve who was distraught because she could afford no gift to place before the altar. As she wept, an angel appeared, telling her to gather weeds from the roadside to present as an offering. When the child finally arrived at church and approached the altar, bright-red "blossoms" sprang from the weeds, turning

them into the beautiful plant we know today.

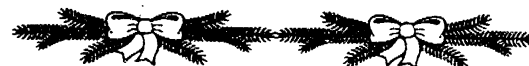
The true story of how the poinsettia became a Christmas flower is only romantic in retrospect, however, for it is really an example of sound business sense and American ingenuity. Paul Ecke traveled across the country, promoting and selling his plants, convincing growers, wholesalers, retailers, and ultimately flower lovers that the poinsettia was a great gift and colorful decorating idea for the Christmas season.

Grown in the fields of Encinitas, Ecke poinsettias were shipped to buyers all across the country until the 1960s, when his son, Paul Ecke II, trained in horticulture at Ohio State University, took the reins of the family business. Not only did he direct the company to develop poinsettias in the wide range of colors we find today—including ones with pink, white, yel-

low, and mottled bracts—but he moved much of the crop indoors to greenhouses and changed the company's sales focus. The results can be seen today: While the Paul Ecke Ranch still delivers hundreds of thousands of potted poinsettias to buyers in California, Arizona, and Nevada each year, its main product is not finished plants, but vegetative cuttings.

The millions of cuttings that the Paul Ecke Ranch ships each year are the beginning of poinsettias across the United States and in more than 50 other countries—a total of 80 percent of all flowering poinsettias in the world. Which means that the poinsettia in your living room—and nearly everyone else's—likely got its start at that ranch. So when you sit down to write a thank-you note to whoever sent you the plant, think about to what great lengths people went to deliver a desert flower to your door.

Glad Tidings in Tecumseh



CRAFT SALE

Fri., Dec. 5 • 5-9 pm Sat., Dec. 6 • 9-4

Baked Goods • Wreaths • Angels • Mittens
Pet Treats • Ornaments Baskets • More!

501 W. Kilbuck • Tecumseh

Beanie Babies and Pillow Pals are IN!

Calamity Jane's 109 E. Main

★ Mon - Sat 10-5 Thurs 'til 8pm Sun 12 - 5 ★

EMERY'S GREENHOUSE

Ready for the Holidays

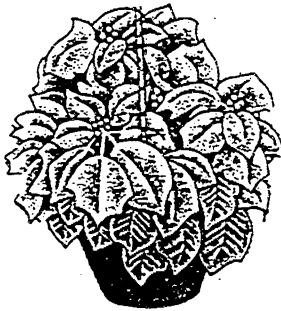
Evergreen Wreaths, Garlands, Fresh Green arrangements, Planters, Grave Blankets
Poinsettias - over 12 different varieties

(including Whites, Reds, Pinks, & Variegated)

Christmas Trees: Scotch * Spruce

* Douglas Fir * Concolor Fir * Balsam Fir

* Canaan Fir * Fraser Fir



Emery's Greenhouse

4502 N. Adrian Hwy.

in Birdsall just north of Adrian

Monday - Saturday 9 - 5:30 except Tuesday we close at noon.

Sunday 10 - 4 'til Christmas • 517-263-2303

Fusilier's

Family Farm & Greenhouse

428-0092 * 428-8982

16400 Herman Rd.

W. Austin Rd. South on Sharon Hollow Rd.

Christmas

Trees All \$15

Wreaths \$10 & up

Poinsettias

starting at \$6.⁵⁰



Expression of Art continued from page one

Now, this artist and other area artists are also working on various projects at the high school level, lending their advice, demonstrating their personal talents, and scheduling tours of their studios.

It is one of the current visible evidences of people in the community getting more involved in our schools, following the lead of athletic and band booster groups, and parent volunteers in the elementary and middle schools.

What do the adults get out of this? As Chris Bragg puts it: "I feel energized when I work with these young people, and I heartily recommend the experience to others. We get as much benefit from volunteering as the students do. It's enriching both ways."

Besides benefiting from artists demonstrating their talents, students also learn some of the practical aspects of marketing their product. Bragg explained that he has been a potter for 30 years, apprenticing under J.T. Abernathy in Ann Arbor, then participating in the Ann Arbor art fairs, moving up to regional art fairs and galleries in the Great Lakes area, and finally, nationally, selling to galleries across the country.

Bragg has taken the projects made at the high school home to be fired in his kiln at his studio. They



Above: Clint Grenier and Damian Evans

will be returned in a few weeks to the students to be taken home and/or perhaps displayed at a student art fair in the spring. Art teacher Carrie Resh will be working on the details of that possible event with volunteers.

Besides welcoming volunteers, the art department also appreciates donations of art materials. Please contact the high school if you are interested.

The Chronicle and the Manchester Travel Club sponsor Chicago Art Institute trip for two high school students

On Tuesday, November 18, I had the honor attending a wonderful art exhibit in Chicago. A fellow student and I had been chosen to be sponsored by the Manchester Chronicle and by the Manchester Travel Club to visit the "Windy City" and view the works of the impressionist painter, Pierre Auguste Renoir.

We arrived in Chicago at about 1:00 PM after a four-hour bus ride, and proceeded to the Art Institute of Chicago to see Renoir's works. The exhibit time wasn't until 2:30 PM, so we had over an hour to explore the museum and some of its other aspects. We were both very impressed with the photography exhibit and also with the Modern Art exhibit

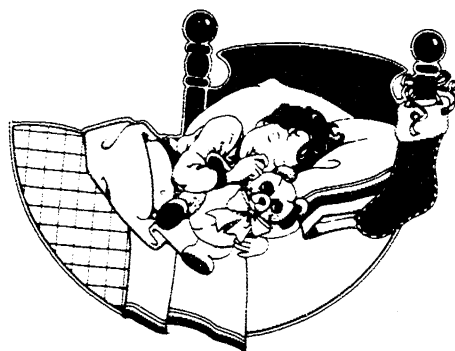
which included works from the likes of Andy Warhol and Roy Lichtenstein. After our half-hour perusal of Renoir's famous paintings, we headed out of the museum to get some lunch.

We explored the downtown area and found a small bakery that was much to our liking. After our stomachs were full, we returned to the museum to finish up our personal tour of Ancient Art and art history. That was the conclusion of our stay at the museum and we proceeded to board the bus at about 5:00 PM. Another long ride home, but all in all it was a great opportunity and I thank both of my sponsors for taking the time to make it an enjoyable experience.

— James Fuerstnau

Flora in the Mill
201 E. Main St.
(313) 428-1034 (800) 270-1034
Cemetery Blankets
Christmas greenery
Centerpieces
Poinsettias
Fresh Flower Arrangements
Custom Bouquets

Visions of Sugarplums



and regular dental check-ups
Bruce A. Bates, D.D.S.

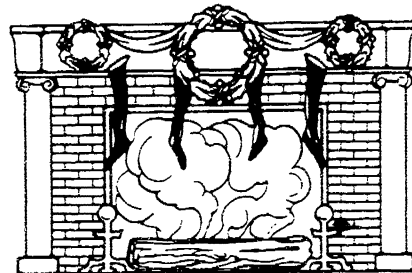
500 Galloway Drive, Manchester
(313) 428-8277

Complete Family Dentistry
Adults & Children Always Welcome
As New Patients

We accept Dental Insurance • VISA • Master Card • Discover • Health Care Creditline Dental

MANCHESTER EYE CARE CENTER

Dr. Julie Marvin-Manders
110 Riverside Drive • Manchester, MI
Hours: Monday 10-7 Tuesday 9-4
Wed & Thurs 8-5 Friday 12-5
Saturdays by appointment (313) 428-2020



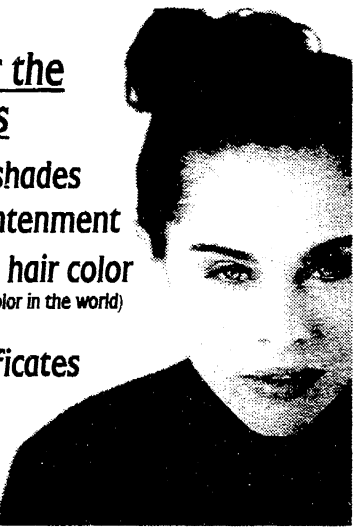
featuring a full line of Aveda hair care, skin care and makeup

new for the holidays

- Aveda shades of enlightenment
- FRAMESI hair color (the best hair color in the world)

gift certificates for the perfect holiday gift!

an attitude of gratitude for all my clients



sandra i. hanes

(517) 456-4757

111 brown street, clinton

one eleven brown street

Time to

WINTERIZE

DAN'S WESTSIDE AUTOMOTIVE

600 West Main Street
428-9455

Free pickup and delivery

- Tune-ups • Brakes • Alignments • Transmission
- Front End & Four-Wheel • Chassis and Suspension
- Tire Rotations • Custom Exhaust • Oil, Lube & Filter

Monday-Friday 8am-6pm Saturday 9am-1pm



\$39.95

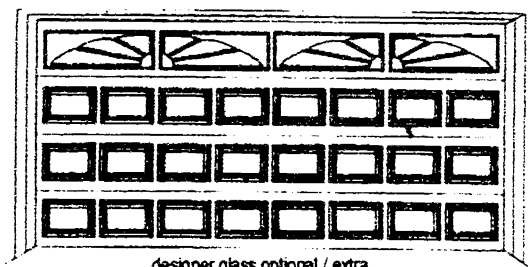
Includes up to 2 gallons antifreeze*
*Sierra Antifreeze extra



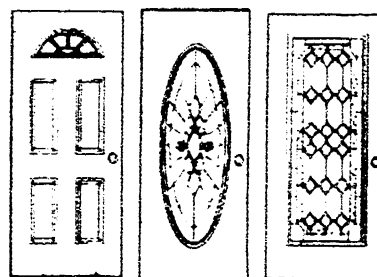
Kendall MOTOR OIL



amart GARAGE DOORS
16x7 - \$ 479.00 INSTALLED!
1/2 Hp. Opener - \$229.00 installed w/Door



designer glass optional / extra



STEEL FRAME ENTRANCE DOORS

FROM \$289.00
COMPLETELY INSTALLED!

FACTORY FINISH
PAINT IN 12 COLORS
AVAILABLE !!

•STORM DOORS• NOW AVAILABLE IN 12 FACTORY COLORS! • FREE ESTIMATES •

All Work Insured & Guaranteed

JOHNSON DOOR SYSTEMS

CLINTON, MI. (517) 456-6696 or (800) 802-8340

OVER 27 YEARS OF EXPERIENCE!

••• EXPERT REPAIR ON ALL DOORS •••

Capsicum: Nature's Body Furnace

- from Nancy's Herb Pantry in the Mill

The somber skies and chilled northern winds beckon winter's unpredictable weather. The moisture in the air chills our bodies to the bone as we attempt the seasonal ritual of adjustment to this extreme change.

The body seems to respond well to certain herbs such as Capsicum, Garlic, etc., which condition the system for the necessary changes.

Capsicum, known as Cayenne Pepper, dates into history as more than a seasoning. Being very hot, it is a fine stimulant which moves the blood throughout the body. It also is a metabolic stimulant which improves the body's ability to absorb nutrients and to eliminate poisons and toxic waste. We must remember that the system will never enjoy abundant health until it is capable of functioning totally on its own as a utilizer of supple-

ments and an eliminator of waste.

Capsicum has served mankind well around the world. Our neighbors to the South who eat hot foods are reported to have much less blood-pressure-type problems and seem to enjoy a general feeling of well being. This herb is high in Vitamin A, and, therefore, is very helpful to the body as it builds its own immune system.

For those of us in the colder climates, this great herb acts as a catalyst for other foods and nutrients and also keeps our bodies much warmer. Some folks sprinkle his powder in their socks and enjoy warmer feet while out in the cold. It has been said that early country doctors would give this as a drink when the old heart began acting up. Some say it would settle the old pump down and help it to beat better.

Not long ago, someone said they cut their arm, and to stop the bleeding they used Capsicum. When it was poured directly into a severe cut, the bleeding stopped immediately. Historically, many women have used Capsicum to assist them when the monthly flow is extremely heavy and spotting is common.

This exceptional herb seems to be many things to many people. I remember, for instance, a friend who used it for hemorrhoid-type problems. He liked using it orally so well that he began using Capsicum enemas for his hemorrhoid problems. He was so pleased that he continued the use of this herb in his daily diet because it makes him feel better all over. His remark was that his "legs just don't hurt as much after standing on concrete all day."

This spectacular herb has never been known as a danger to mankind. Its food values and its medicinal properties make it one of nature's finest foods. Occasionally, this won-

derful food may give a little warm sensation in the stomach and even during bowel evacuations. The warmth may be detected; however, there is no danger. It is a very fine stimulant for the Digestive System, as I said previously, and it helps to keep the mucus well-balanced in the system.

Speaking of mucus problems, I personally have used Capsicum in addition to Lobelia to help my body keep heavy mucus congestion out of the bronchials and lungs.

Capsicum, this great and marvelous herb, could be your Natural Alternative for your daily health needs.

- Nancy

Manchester
~ Family Dentistry ~
James A. Watson
D.D.S.
428-9019
227 E. Main St., Manchester
Early Morning, Late Evening, Sat. appts.
Most Insurances Accepted

MANCHESTER
Market
Prices good thru December 7, 1997 455 W. Main

Spartan
Apple Juice
99¢ 64 oz.

Coke
Products
2 liter btl.
99¢ + dep.

Incredible Bulk
Ice Cream
2/\$7.00
5 quart pail

Mon - Sat 8 am to 9 pm Sunday 9 am to 7 pm

Craft Show

- * Over 100 craft booths
- * Concessions and Raffle
- * Convenient & Barrier Free Parking
- * Admission - \$2

Saturday, December 6
9 am - 4 pm

Saline Middle School
7265 Saline-Ann Arbor Rd
Exit 175 from I-94 - 6 miles south on Saline-Ann Arbor Rd

EVERGREEN WREATHS, BLANKETS
ROPING MADE FRESH DAILY

6 ft. BLANKETS with Red Ruscus Cones & Ribbons **\$35.00 & up**
3 ft. BLANKETS **\$25.00 & up**
EVERGREEN CEDAR OR
PINE ROPING..... 50 FT. COIL \$30.00 OR .69 ¢ ft..

MIXED EVERGREEN WREATHS
WIDE VARIETY

| | |
|--------------------------|------------------------|
| 2 ft. Untrimmed..\$7.50 | 2 ft. Trimmed..\$12.50 |
| 3 ft. Untrimmed..\$17.50 | 3 ft. Trimmed..\$25.00 |
| 4 ft. Untrimmed..\$27.50 | 4 ft. Trimmed..\$35.00 |

Large Variety of POINSETTIAS
\$3.50 & up

Fresh Xmas Greens & Candle Arrangement
\$15.00 & up

CHELSEA GREENHOUSE
475-1353
7010 Lingane Rd. Chelsea
Charter Member F.T.D. Member Teleflora
Member A.F.S.
Serving the area since 1901

Open
Monday - Saturday 8am-5pm
Sunday Noon - 4 'til Christmas

WATERLOO RD.
N
W • E
DOWNTOWN
CHELSEA
S
I-94
MANCHESTER



STU EVANS

Wrap Up A Holiday Deal NOW!

1998 WINDSTAR GL



THE ONLY MINIVAN TO EARN FIVE STARS
IN GOVERNMENT CRASH TESTS

3.0L 6CYL. ENGINE, AUTO TRANSMISSION, PKG
470B, DUAL AIR BAGS, REAR DEFROSTER, AM/FM
STEREO W/CASSETTE, SPEED CONTROL, TILT
STEERING, DELUXE WHEEL COVERS



2 available at this price 18 at similar savings

RETAIL LEASE 24 MONTHS \$298.57*

Monthly Use Tax.....17.91
Total Monthly Payment.....316.48
Refundable Security Deposit.....325.00
Customer Cash Down.....1,000.00
Tax on Rebate & Down Payment...150.00
Customer Pays at Signing.....1,791.48
Total of Payments Without Tax...7,165.68
Total Mileage Allowed.....24,000
Mileage Penalty.....15¢/mile
Closed End Lease

RED CARPET LEASE ADVANCE PAYMENT PROGRAM 24 MONTHS \$7341.84*

Monthly Use Tax\$22.10
Customer Pays at Signing..7,872.24
Total Mileage Allowed24,000
Mileage Penalty15¢/mile
Closed End Lease

HOME OF THE SVT_s SPORTS CARS Contour SVT and Mustang Cobra SVT

FREE SERVICE LOANERS

1998 F-150

4.2L EFI V6, 5-speed Manual, 567A, Owl Tires, Cast Aluminum Wheels, Power Windows/Locks, Tilt Wheel, Cruise Control, Air Conditioning, Sliding Rear Windows

RETAIL LEASE 24 MONTHS \$221.84*

• Monthly Use Tax.....\$13.28
• Total Monthly Payment.....\$234.62
• Refundable Security Deposit.....\$250.00
• Customer Cash Down.....\$1,000.00
• Tax On Rebate & Downpayment.....\$50.00
• Customer Pays at signing.....\$1,544.62
• Total of Payments Without Tax.....\$5,312.16
• Total Mileage Allowed.....24,000
• Mileage Penalty.....15¢/mile
• Closed End Lease

RED CARPET LEASE ADVANCE PAYMENT PROGRAM 24 MONTHS \$5448.96*

• Monthly Use Tax.....\$13.62
• Customer Pays at signing.....\$5,775.84
• Total Mileage Allowed.....24,000
• Mileage Penalty.....15¢/mile
• Closed End Lease
stk. #1061

8 at Similar Savings
2.9% APR
Financing Available 12-36 Mos.
4.9% APR Available 48 Mos.

1998 FORD F150 SUPER

4.2L EFI V6, 5-speed, Manual, 567A, Owl Tires, Cast Aluminum Wheels, Power Windows/Locks, Tilt Wheel, Cruise Control, Sliding Rear Window, Floor Mats, Air Conditioning

RETAIL LEASE 24 MONTHS \$241.29*

• Monthly Use Tax.....\$14.48
• Total Monthly Payment.....\$255.77
• Refundable Security Deposit.....\$275.00
• Customer Cash Down.....\$1,000.00
• Tax On Rebate & Downpayment.....\$50.00
• Customer Pays at signing.....\$1,068.00
• Total of Payments Without Tax.....\$3,798.96
• Total Mileage Allowed.....24,000
• Mileage Penalty.....15¢/mile
• Closed End Lease

RED CARPET LEASE ADVANCE PAYMENT PROGRAM 24 MONTHS \$5788.32*

• Monthly Use Tax.....\$14.47
• Customer Pays at signing.....\$6,135.50
• Total Mileage Allowed.....24,000
• Mileage Penalty.....15¢/mile
• Closed End Lease

2 Available at this Price
18 at Similar Savings

1998 MUSTANG

3.0L 6 cyl. Engine, 5 speed trans., Dual Air Bags, Rear Defroster, Air Conditioning, Power Windows/Locks, AM/FM Stereo Cass. w/CD Player, 15" Cast Aluminum Wheels

RETAIL LEASE 24 MONTHS \$223.43*

• Monthly Use Tax.....\$13.41
• Total Monthly Payment.....\$236.84
• Refundable Security Deposit.....\$250.00
• Customer Cash Down.....\$1,000.00
• Tax On Rebate & Downpayment.....\$105.00
• Customer Pays at signing.....\$1,591.34
• Total of Payments Without Tax.....\$3,362.22
• Total Mileage Allowed.....24,000
• Mileage Penalty.....15¢/mile
• Closed End Lease

RED CARPET LEASE ADVANCE PAYMENT PROGRAM 24 MONTHS \$5713.44*

• Monthly Use Tax.....\$16.16
• Customer Pays at signing.....\$6,101.28
• Total Mileage Allowed.....24,000
• Mileage Penalty.....15¢/mile
• Closed End Lease

3 Available at this Price
9 at Similar Savings
2.9% APR
Financing Available

1998 CONTOUR

2.0L Zetec Engine - Dual Air Bags, Rear Defroster, 5-speed, AM/FM Stereo Radio, Air Conditioning, Tilt Steering Wheel, Full Wheel Covers

RETAIL LEASE 24 MONTHS \$235.89*

• Monthly Use Tax.....\$14.15
• Total Monthly Payment.....\$250.04
• Refundable Security Deposit.....\$275.00
• Customer Cash Down.....\$1,000.00
• Tax On Rebate & Downpayment.....\$105.00
• Customer Pays at signing.....\$1,630.24
• Total of Payments Without Tax.....\$3,661.76
• Total Mileage Allowed.....24,000
• Mileage Penalty.....15¢/mile
• Closed End Lease

RED CARPET LEASE ADVANCE PAYMENT PROGRAM 24 MONTHS \$5968.56*

• Monthly Use Tax.....\$16.00
• Customer Pays at signing.....\$6,371.76
• Total Mileage Allowed.....24,000
• Mileage Penalty.....15¢/mile
• Closed End Lease

2 Available at this Price
14 at Similar Savings
2.9% APR
Financing Available

1998 EXPLORER 4X4 SPORT 2 DR.

4.0L 5 cyl. Automatic, Pkg. 334A, 4x4, AM/FM Stereo w/CD Player, Premium Sports Pkg., Chrome Wheels, Sport Bucket Seats, Power Windows/Locks, Tilt Wheel, Cruise Control, Air Conditioning

RETAIL LEASE 24 MONTHS \$339.95*

• Monthly Use Tax.....\$20.40
• Total Monthly Payment.....\$360.35
• Refundable Security Deposit.....\$375.00
• Customer Cash Down.....\$1,000.00
• Tax On Rebate & Downpayment.....\$50.00
• Total of Payments Without Tax.....\$8,150.90
• Total Mileage Allowed.....24,000
• Mileage Penalty.....15¢/mile
• Closed End Lease

RED CARPET LEASE ADVANCE PAYMENT PROGRAM 24 MONTHS \$7876.32*

• Monthly Use Tax.....\$19.60
• Customer Pays at signing.....\$8,349.88
• Total Mileage Allowed.....24,000
• Mileage Penalty.....15¢/mile
• Closed End Lease

3 Available at this Price
5 at Similar Savings
3.9% APR
Financing Available 12-36 Mos.
5.9% APR Available 36-48 Mos.

1998 EXPLORER XLT 4 DR.

4.0L Automatic, Pkg. 345A, 4x4, AM/FM Stereo w/CD Player, Owl Air Terrain Tires, Cloth Sport Bucket Seats, Absoluam Wheels, Power Windows/Locks, Tilt Wheel, Cruise Control, Air Conditioning

RETAIL LEASE 24 MONTHS \$404.75*

• Monthly Use Tax.....\$24.29
• Total Monthly Payment.....\$429.34
• Refundable Security Deposit.....\$450.00
• Customer Cash Down.....\$1,000.00
• Tax On Rebate & Downpayment.....\$50.00
• Customer Pays at signing.....\$1,939.24
• Total of Payments Without Tax.....\$8,714.00
• Total Mileage Allowed.....24,000
• Mileage Penalty.....15¢/mile
• Closed End Lease

RED CARPET LEASE ADVANCE PAYMENT PROGRAM 24 MONTHS \$9323.04*

• Monthly Use Tax.....\$23.31
• Customer Pays at signing.....\$9,682.48
• Total Mileage Allowed.....24,000
• Mileage Penalty.....15¢/mile
• Closed End Lease

4 Available at this Price
15 at Similar Savings
3.9% APR
Financing Available 12-36 Mos.
5.9% APR Available 36-48 Mos.

1998 TAURUS LX

3.0L 6 cyl. Auto. Trans., Dual Air Bags, Rear Defroster, Air Conditioning, Power Windows, AM/FM Stereo Radio w/Cass., Deluxe Wheel Covers

RETAIL LEASE 24 MONTHS \$280.75*

• Monthly Use Tax.....\$16.05
• Total Monthly Payment.....\$297.50
• Refundable Security Deposit.....\$300.00
• Customer Cash Down.....\$1,000.00
• Tax On Rebate & Downpayment.....\$185.00
• Customer Pays at signing.....\$1,702.50
• Total of Payments Without Tax.....\$6,738.00
• Total Mileage Allowed.....24,000
• Mileage Penalty.....15¢/mile
• Closed End Lease

RED CARPET LEASE ADVANCE PAYMENT PROGRAM 24 MONTHS \$6947.76*

• Monthly Use Tax.....\$19.24
• Customer Pays at signing.....\$7,499.52
• Total Mileage Allowed.....24,000
• Mileage Penalty.....15¢/mile
• Closed End Lease
SL. 47012

12 at Similar Savings
2.9% APR
Financing Available

1998 ZX2

2.0L Zetec Engine, Dual Air Bags, Rear Defroster, Air Conditioning, AM/FM Stereo Cass., Automatic Trans., Tilt Steering, Full Wheel Covers

RETAIL LEASE 24 MONTHS \$199.90*

• Monthly Use Tax.....\$11.99
• Total Monthly Payment.....\$211.89
• Refundable Security Deposit.....\$225.00
• Customer Cash Down.....\$1,000.00
• Tax On Rebate & Downpayment.....\$129.00
• Customer Pays at signing.....\$1,556.89
• Total of Payments Without Tax.....\$4,797.88
• Total Mileage Allowed.....24,000
• Mileage Penalty.....15¢/mile
• Closed End Lease

RED CARPET LEASE ADVANCE PAYMENT PROGRAM 24 MONTHS \$5254.88*

• Monthly Use Tax.....\$15.54
• Customer Pays at signing.....\$5,630.24
• Total Mileage Allowed.....24,000
• Mileage Penalty.....15¢/mile
• Closed End Lease

2 Available at this Price
6 at Similar Savings
2.9% APR
Financing Available

Destination charges included. Plus tax, title, plate. Rebates to dealer. Qualified lessees have the option to purchase the unit at lease end for amount determined at inception of lease. Lessee responsible for excess wear and tear. Lessee subject to approval and adequate insurance determined by Ford Credit. All rebates to dealer. Offer available through 1-5-98.

STU EVANS



510 West Main Street, Manchester
313-428-8343



2.9%

BIG TIME Savings!

A.P.R.

ON THESE VEHICLES OR UP TO **\$2000** CASH BACK!

\$1000 CASH BACK



CAMARO

\$750 CASH BACK



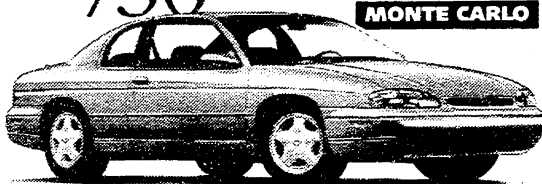
LUMINA

\$2000 CASH BACK



CAVALIER CONVERTIBLE

\$750 CASH BACK



MONTE CARLO

\$1000 CASH BACK



S-10

\$2000 CASH BACK



TRACKER

\$1500 CASH BACK



ASTRO

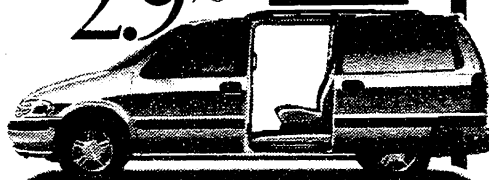
\$1000 CASH BACK



BLAZER

2.9%

VENTURE



\$1000 CASH BACK



FULL-SIZE CONVERSION VAN

Visit Your Great 8



Chevy Dealers Today!

ANN ARBOR
Rampy Chevrolet
3515 Jackson Road
313/663.3321

CHELSEA
Faist-Morrow Chevrolet
1500 South Main St.
313/475.8664

CLINTON
Underwood Chevrolet
1070 West US 12
517/456.4181

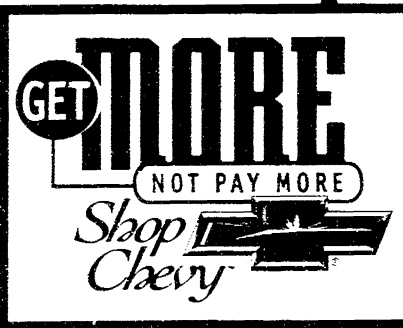
DEXTER
Frank Grohs Chevrolet
7120 Dexter - Ann Arbor Rd.
313/426.4677

HOWELL
Champion Chevrolet
5000 E. Grand River
517/545.8800

MANCHESTER
Tirb Chevrolet
131 Adrian Street
313/428.8492

SALINE
Bill Crispin Chevrolet
7112 E. Michigan Ave.
313/429.9481

YPSILANTI
University Chevrolet
1180 E. Michigan Ave.
313/481.0210



\$2000 cash back on '98 Cavalier convertible. As an alternative to cash-back offers, GMAC*-approved 2.9%/48-month or 3.9%/60-month APR financing available on selected vehicles. All Cavalier Models \$750 Cash Back, excluding Cavalier Convertible. Offer ends January 5, 1998. For complete details, see your participating Chevrolet* dealer.

School lunch menu

Monday, December 8: Sub Sandwich, cool ranch doritos, carrot sticks, dill pickles, fun fruits, milk.

Tuesday, December 9: Chicken nuggets, crispy fries, dinner roll, fruit, milk

Wednesday, December 10: Macaroni & Cheese, broccoli, bread stick, jello, milk

Thursday, December 11: Soft tacos, corn, fruit roll-up, milk

Friday, December 12: Ollie's pizza, salad, fruit, cookie & milk

Middle School Effort Recognition

The following students received effort recognition for the first marking period, but were not included in last week's listing of the honor rolls.

8th Grade: April Sysol; Justin Tinkle; Kristi Trinkle

6th Grade: Christopher Roberts

5th Grade: Ryan Beagle, Megan Kanta, Christopher Marston

Manchester Bands Announce Winter Concert Schedule

The Manchester Bands are pleased to announce our winter concert series for 1997. The first concert will be on Thursday December 11, 1997 at 7:00 PM in the High School Gym. This concert will feature the 7th and 8th grade band and the High School Band. In addition to the concert pieces, there will be solos and small group performances by members of the bands. The concert is free and your patronage is greatly appreciated.

Our second concert features the fifth grade band and the sixth grade band. This concert will be held on Tuesday December 16, 1997 at 7:00 PM at the Middle School Gym. Come and see our fifth graders in their first public performance as they play various traditional songs and music of the season. The sixth grade band will be performing solos and small groups, as well as other full band arrangements. There is no cost for this concert and all are welcome. For additional information, please contact Mr. Throneberry at the High School (428-7333).

Save Those Labels!

The Middle School Campbell soup label drive is under way. We will be collecting soup labels until March 1, 1998. Please help with our collection by saving all your Campbell's product labels and dropping them off at our local Manchester Market or by sending them to the Middle School in care of Chris Honer.

We will have a contest in fifth grade and sixth grade for which the classroom winners in each grade will make a trip to the Dairy Queen. We hope to collect 40,000 labels this year which we will exchange for books on informational reading.

Thank you very much for your support.

Manchester Middle School

Bruce A. Bates D.D.S.

500 Galloway Drive, Manchester, Michigan

(313) 428-8277

Complete Family Dentistry

• Adults & Children Always Welcome as New Patients

We Accept Dental Insurance

Visa • MasterCard • Discover

Healthcare Creditline Dental

Gentle Dental Care

Relaxing Gas Available Upon Request

Arend Tree Farms

Two Locations to choose from:

* Brooklyn: 2 mi. South on M-50 (517) 592-2006

* Chelsea: I-94 exit #156 west of Chelsea 475-7584

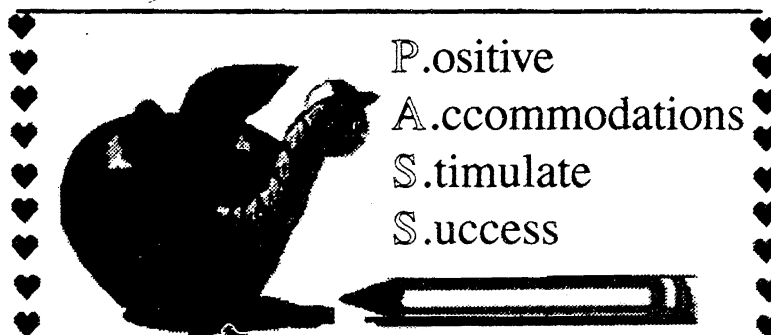
LARGEST TREE FARMS IN SOUTHEASTERN MICHIGAN

Specializing in Spruce & Douglas Fir

White & Scotch Pine also available Open Daily 9-5

Over 400 acres; 400,000 trees to choose from

School



Talking Word Processors & Word Prediction

Assistive Technology

Part 4

Have you ever asked someone to proof material you have written in a word processing program? Why do we do this? Because we often read right through our mistakes. What if you make mistakes 50% of the time, like many of the people with learning disabilities?

Have you ever known what word you want to use, but your mind just blanks on how to spell it? What do you do? Maybe a spin through a dictionary (mine is on the computer so I can just keep trying combinations of letters until I see the word I want). What if your mind went blank for 50% of the words, like many of the people with learning disabilities?

The assistive technology addressed in this issue deals with these problems.

• Imagine that you can click the sound button and everything you just entered in was spoken back to you! This is what talking word processors do. You can have it read each word, each sentence or each paragraph - or - you can turn the sound off and on as you need it. It highlights each word as it speaks. This type of software could be the proof reader for those of us who need it, but for the people with learning disabilities in language this is a tool to make them independent. But what about the mistakes? How can you find the right word if your spelling is a problem? Well, the spell checker speaks as well so that a person can pick the word they want. OR...

• Imagine being able to type in one letter and having 5-9 words that start with that letter appear on the screen! This is what word prediction software does. If you are just starting a sentence and type in a "T", then the software displays words like; The, There, This - notice that the words are capitalized! Depending on what word you pick for the start of the sentence, the word predictor brings up the most likely next words. Say you pick 'There' as the first word, these words would appear next; are, is were. As you go on with your writing, you type in one, two, or three letters and keep selecting the right word. When sentences are completed they just automatically go into the word processing program you are using. This software also reads the word choices.

The two software programs discussed here are Write:Outloud and Co:Writer. They are good examples of talking word processors and word prediction programs. These are from Don Johnston, Inc., a company which provides a lot of products for special needs. Their phone number is 800-889-5242.

P.A.S.S. is a local parent-student support group. Call us at 428-0738 and leave a message. Watch for announcements of our assistive technology meeting early next year.

Sula Darlene Jeffers

ATTORNEY AT LAW

150 E. Main Street

P.O. Box 625

MANCHESTER, MI 48158

(313)-428-8190

All the best for you and your farm . . .

from your Farm Bureau Insurance Agent



Larry Becktel
135 E. Main STE 200
Manchester, MI 48158
428-7331

Get all the protection you need - for your farm, yourself, and your family - from Farm Bureau Insurance. Serving farmers is our specialty. Call today.

Making your future more predictable.

Buying or Selling a Home?



- 30 years sales experience
- Including 16 years in retail banking sales
- B.B.A. in Marketing
- Affiliated with top broker in Washtenaw County

Mark VanBogelen

(313)-428-0738
(313)-677-4300

THE ANDERSON ASSOCIATES REALTORS

2160 Huron Parkway
Ann Arbor, MI 48104



Mia Nicole Flint

Carol and Tim Flint of Ann Arbor proudly announce the birth of their daughter, Mia Nicole, on October 31 at 11:45 AM, weighing 8 pounds, 2 ounces, and measuring 21" long.

Grandparents are Richard & Loretta Widmayer of Manchester and Marlene Hamilton of Ypsilanti. Great grandmother is Dorothy Beagle of Hudson.

Kate Elizabeth Dorman

James and Renee Dorman of Manchester are proud to announce the birth of their daughter, Kate Elizabeth, on November 19th, weighing 8 pounds 14 ounces and measuring 21-3/4 inches long.

Kate was welcomed home by her big sister, Audrey.

**Happy 84th
Birthday
Harold
Splitt**
★
**December
24**



People

COLLEGE NEWS

Local Student admitted to MSU Honors College

One Hundred and six academically talented students have been accepted into Michigan State University's Honors College. Established in 1956, the college meets the needs of academically-gifted freshmen and sophomores by providing a four-year program in any major field of study.

Katrina Bihlmeyer, a sophomore majoring in Park and Recreation Tourism Resources, is among those talented students. Katrina is the daughter of John and Nancy Bihlmeyer, and a 1996 graduate of Manchester High School.

WMU College of Engineering & Applied Sciences Sponsors Conference

Rodney R. Burkhardt will present a project at the twenty-first Conference on Senior Engineering Design Projects at Western Michigan University, December 9.

Rodney graduated from Manchester high school in 1993, and is the son of Rita and Robert Burkhardt. He plans to receive a bachelors degree in engineering graphics and design technology in December 1997.

Rodney's project is entitled "Thermal Distortion of Chemically Bonded Sand." The conference will be held from 9 AM to 5 PM at the Bernhard Center on the WMU Campus.

LOCAL STUDENTS INCLUDED IN WHO'S WHO

A total of 13 students from this area are included in the 31 st Annual Edition of *Who's Who Among American High School Students*, 1996-97.

Who's Who, published by Educational Communications, Inc., Lake Forest, Illinois, is the largest high school recognition publication in the country. Students are nominated by high school principals and guidance counselors, national youth groups, churches and educational organizations based upon students' academic achievement and involvement in extracurricular activities. Traditionally, 99% of Who's Who students have a grade point average of 'B' or better and 97% are college bound.

The 31 st Annual Edition of *Who's Who Among American High School Students*, 1996-97, published in 18 regional volumes, features over 700,000 students or just 5% of the nation's 14,000,000 high school students. They represent approximately 18,000 of the 22,000 public, private and parochial high schools in the country.

Who's Who students also compete for \$200,000 in scholarship awards and participate in the publication's Annual Survey of High Achievers, an annual opinion poll of teen attitudes. The book is distributed to up to 15,000 high schools, colleges, universities and public libraries throughout the country.

Local students selected include: **Brandon Brown, Michelle Barker, Jodi Feldkamp, Laura Haeussler, Suzanne Lowery, Sarah McGuire, Peter Schulte, Amy Gall, Megan Kennedy, Marilyn Maher, Hydy Paige, Steve Spurr, and Elise Geyer.**

Youth Symphony Features Two Manchester Students

The Siena Heights Youth Symphony will present its first concert of the 1997-98 season Monday, December 8 at 7:00 PM in the Francoeur Theatre, Verheyden Performing Arts Center, on the campus of Siena Heights College.

The 88 member orchestra is in its ninth year at Siena Heights and is composed of students ranging in age from 8 to 21, representing Lenawee, Hillsdale, Monroe, Washtenaw and Jackson counties. Manchester students who are performing in the orchestra include **Annie Hinkley** and **Nick Puscas**, both on the violin. Under the direction of conductor Todd Barnhart, the orchestra will perform works of Debussy, Mozart, Borodin, Berlioz and Copland. Tickets are \$5.00 and will be available at the door. Students and Adrian Dominicans are admitted free of charge.

Macomers Celebrate 63rd Wedding Anniversary



Then and Now



George and Mabel Macomber of Manchester will celebrate their 63rd Wedding Anniversary on December 3. Pictured above in 1934, and more recently on their farm "Whippoorwill Acres" in Manchester Township, George and Mabel are semi-retired from farming, while George continues to cultivate a few acres with his horses. Congratulations!



FELDKAMPS CHRISTMAS TREES & FRESH WREATHS

"You Cut or We Cut"

- Long & Short Needle Tree
- All sizes Including Oversize Varieties

Fri-Sat 9 - 5 & Sun 1 - 5

(or by appt) **428-8571**

Pleasant Lake Rd./Smythe Rd. Intersection





- by T.V. Ludwick

I received this from sister Bid who now lives in South Carolina. She challenged me to submit this to the paper with the answers to follow the following week. It is titled "SO YOU THINK YOU'RE SMART, HUH?" (and who of us doesn't think so?). "Test your intelligence (and your friend's)...READ THIS SENTENCE: FINISHED FILES ARE THE RESULT OF YEARS OF SCIENTIFIC STUDY COMBINED WITH THE EXPERIENCE OF YEARS. Now, count aloud the F's in that sentence. 2. Count ONLY ONCE. NO CHEATING! What the author thinks are embarrassing answers will appear in the next issue.

Hubby and I are scouring the area stores looking at the price of ground cloves. What a shock..I haven't bought any for quite a while. The jar I have is a 0.9 ounce size and \$3.81. That size jar in one store is marked \$5.49 and even stick cloves are \$4.59. I had no idea, wonder why. Anybody out there know the reason? When ground nutmeg

jumped in price from \$2.45 to \$3.79 for the 1.1 oz. size, I figured I needed it anyhow, so why not? Do you think spices are cheaper in the bulk? Say, that would make a great Christmas present!

Thursday, December 4: For our December Birthday Bash we are having pork chops ala Jan. Hubby loves these, they are so tender. (Of course, it is not his birthday month, it's mine.) I love them, too, honestly. We invite all December-born folks who are 55 or older to come to Emanuel for their party today. You may call in reservations to Sharman (ahead) at 4288359, or to Jan at 428-7630 (before 10:30 AM on meal days. Come over to the Center for bingo following the meal for more fun.

Friday, December 5: Senior bus will begin pickup at 9 AM to attend the free Christmas Creche Exhibit. Call Marion Ahrens at 428-7865 to go along on the bus. Sunday, December 7: Seniors will attend the Bethlehem Market Place at Jackson's

Bethel Baptist Church. Bus pickup starts at 1:00 PM. Opportunity is provided for a love offering to help defray expenses, but there is no charge. You may call Marion for information or to make your reservation for the bus.

Tuesday, December 9: Beginning at 9:30, Manchester Area Senior Citizens will hold its 1997 Annual Meeting at the Center, 214 N. Macomb St. You, as members, are invited to attend. Following this, the Council will meet and, at 10:30, work begins on the January/February calendar. Come join in and give them your ideas. Meanwhile, back at Emanuel, Jan and loyal crew are preparing meat loaf for our pleasure.

Thursday, December 11: Here comes Chef's Choice and it makes me wonder (it will be good, so get those reservations in). We've missed you, Grandma Margaret Gillow! The place just doesn't seem the same without your smile!

Looking ahead: **Friday, December 12** is the date of

Manchester Area Senior Citizens News, Continued -

the Klager School Christmas Program and Dinner for area senior citizens. Sign up for your ride on the senior bus or you may call Marion.

Did you think I could forget all you Sagittarians and your horoscope? November 23-December 21: "You will have some periods of unusual happiness. This will enhance your charm and prestige."

The Alternative to Cutting a Tree!

Kleinschmidt's  Hardware



19680 Sharon Valley Road

Mon.- Wed. & Fri. 7 am -6 pm

Thu. 7 am -8 pm, Sat. 8 am -5 pm

Sunday 10 am -4 pm

All Artificial Trees

5 foot or taller

UP TO 50% OFF Regular Price

428-8337



THE CRAFT CLINIC of Chiropractic

"Experienced Quality Care

You can Feel Comfortable with"

- Convenient Hours Monday thru Saturday
- 24 Hour Emergency Service
- Most Insurances Accepted

Mark G. Craft, D.C.

Never A Fee for Consultation

(313) 428-1370

122 W. Main St. • Manchester

Entrance off Washington, across from Library

FEEDING YOUR BACKYARD FRIENDS

BLACK SUNFLOWER SEED 50#
\$9.95 ALL SEASON

WILD BIRD SEEDS

50# STANDARD with corn \$9.95

50# PREFERRED without corn \$10.95

CRACKED CORN ♦ SUET CAKES

BIRD SEED BLOCKS

THISTLE SEED \$.80/LB \$34.50 50/LB

GREAT SELECTION OF K-FEEDER

BIRD FEEDERS

25" DELUXE JUMBO SUNFLOWER

ONLY \$24.00

SQUIRREL FEEDERS ♦ EAR CORN ♦ PEANUTS

WOOD SHAVINGS \$3.25 PER BALE

MORTON SOFTENER SALT

PATRIOT HORSE FEED

DOG & CAT FOOD

Nutros

Iams

Eukanuba

Diamond

Science Diet

Proud Paws



E. G. MANN & SONS INC.
8400 BOETTNER RD
BRIDGEWATER MI 48115

this MANN delivers
CALL FOR HOME DELIVERY
313-429-7027 OR 313-428-8876

Are your bifocals a pain in the neck?



Varilux® Comfort lenses.
Vision beyond bifocals.

When you wear bifocals, your neck can twist and turn as much as the plot of the novel you're reading. Fortunately, there are Varilux Comfort progressive lenses. Unlike bifocal lenses, Varilux Comfort's advanced patented technology actually works very much like the human eye. So you see clearly and comfortably at all distances: near, far and in those crucial in-between areas bifocals miss.

Call or come in for a free demonstration today!

Manchester Eye Care Center, P.C.

Dr. Julie A. Marvin-Manders, O.D.

110 Riverside Dr. 428-2020

Mon 10-7, Tues 9-4, Wed & Thurs 8-5, Fri 12-5,
Sat. by appointment

VARILUX

Organizations

Cub Scouts Plan Food Drive



Manchester Area Cub Scouts will be "Scouting For Food" once again this year. All the food picked up will go to Manchester Family Services.

The Scouts will pick up the canned goods on December 6. Please have all canned goods bagged and ready to be picked up by 8:00 AM.

For those who wish to donate but don't live within the village limits, we will also have a box at Manchester Market for you to donate.

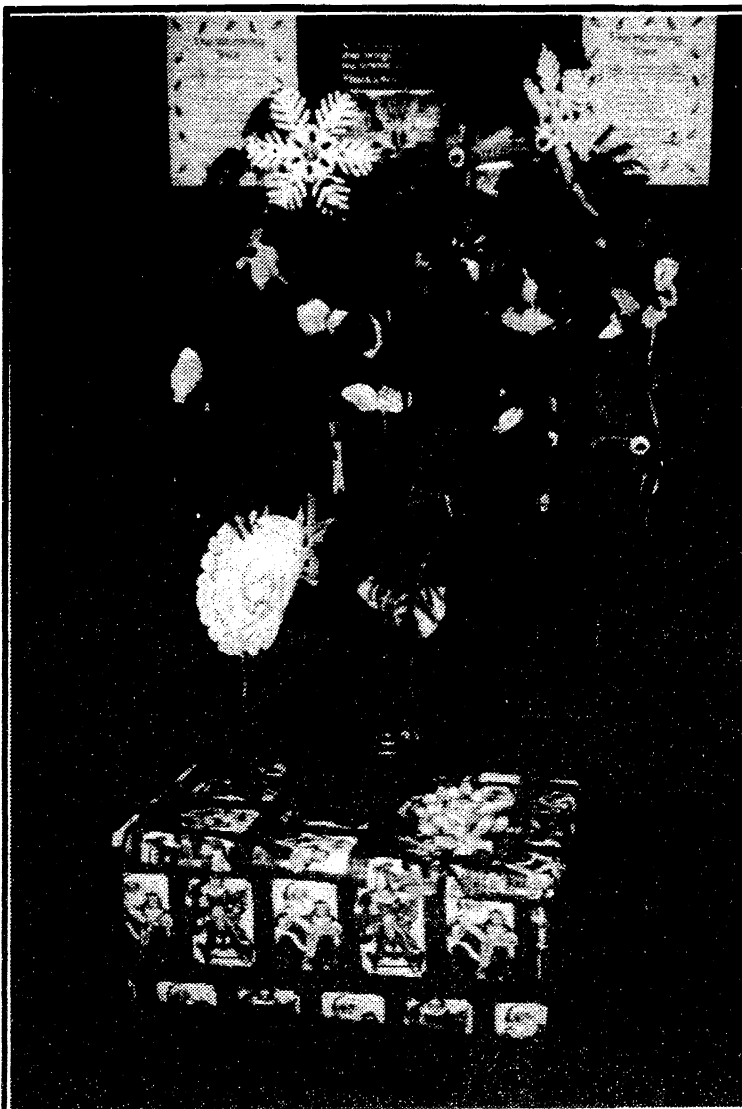
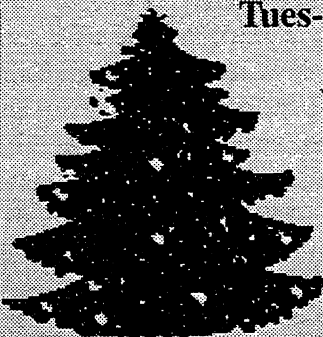
Thanks again and have a Happy Holiday.

Hillside Tree Farm

4714 U.S. 12, Tipton
4 miles west of M-52 • (517) 456-7233

Tues-Thurs 3:30-5 Fri. 12-5,
Sat. & Sun. 10-5

Wagon Rides, Tot tree lot,
play area, Warming barn
with food, beverages,
fireplace, crafts.
Scotch Pine & Spruce,
Cut your own \$8-29
Other Varieties Pre-cut



GIRL SCOUTS

Girl Scout Troop 596 decorated their "Warming Tree" at First of America Bank, Manchester office, last Wednesday. Your help is needed to donate new gloves, hats or socks for those in need. You may take a hand-made ornament from our tree, in exchange for your donation. The tree will be at the bank until December 10.

American Legion Auxiliary Unit #117

The November 12 meeting of the Manchester Legion Auxiliary was attended by 23 members and guest, Marti Brown, 2nd District President.

Several committee reports were given and discussed, followed by the business meeting.

The Veterans' Day Dance was a successful venture and plans are for another at a later date.

Some members will be going to the Ann Arbor Veterans' Hospital on December 2 to assist patients with the wrapping of their previously selected holiday gifts for their loved ones.

Marti Brown, District President, gave a short informative talk on her goals as district leader.

The December 10th meeting is a potluck beginning at 6:30 p.m. at the Hall. Ladies are asked to bring a dish to pass and table service. Meat and beverage will be furnished. Members are also asked to bring canned goods and/or paper products which will be donated to the Manchester Family Service.

After the meeting, refreshments were served by Joyce Golightly, Helen Rigg, and Elaine Steele.



WE'RE JUST A HOP, SKIP, AND JUMP AWAY.

A broken arm. Scraped knees. Unexpected accidents. There are many reasons to take your little one to a doctor. The staff at Saline Community Hospital's Emergency Department are prepared for you and your child, 24 hours a day. We provide high-quality emergency care in a comfortable setting close to your home.

Saline Community Hospital also has emergency services available for your entire family. If you require specialized treatment, you can be transferred to our sister hospital, St. Joseph Mercy.

SALINE COMMUNITY HOSPITAL

Fast care for small emergencies.



The Saint Joseph Mercy Health System includes St. Joseph Mercy Hospital in Ann Arbor, McPherson Hospital in Howell, and Saline Community Hospital; outpatient facilities and programs, and programs and services to meet the health and wellness needs of the communities we serve.

For a physician referral, please call toll free: 1-800-231-2211.

Announcements

HOLIDAY SEASON BEGINS WITH ASO POPS CONCERT

Celebrate the beginning of the holiday season at the Adrian Symphony's A Magical Christmas Pops concert on Sunday, December 7th at a special time of 5pm in Dawson Auditorium on the campus of Adrian College. An annual favorite, this year's concert will feature the amazing magic of Stuart and Lori MacDonald, whose dynamic showmanship creates a unique experience for their audience. Expect a very special appearance by Santa (how will they do that?). Bruce Goldsen will narrate the program again this year.

Enrique Barrios, music director/conductor of Bellas Artes Chamber Orchestra in Mexico City and artistic director of the International Music Festival of Morelia, Mexico will serve as guest conductor for A Magical Christmas Pops. He will direct the ASO in familiar holiday music, including excerpts from The Nutcracker, Anderson's Sleigh Ride and A Christmas Festival, Radetsky March and Donner and Blitzen by Strauss. Robert Hanson's arrangement of Hanukkah Song, and popular holiday selections.

Spend a wintry afternoon with the Adrian Symphony! Tickets for A Magical Christmas Pops are \$15 for adults, \$13 for senior citizens, and just \$5 for children and students. *The ASO is making a special offer to Manchester: buy one ticket to A Magical Christmas Pops, and receive one of equal or lesser value free.* This discount is available by advance purchase only.

For further information or to order tickets, call the ASO office at 517-264-3121. This concert is generously sponsored by Bank of Lenawee, Citizens Gas Fuel Company, and WABJ/Q-95 radio stations.

Lenawee Community Chorus

The Lenawee Community Chorus and Members of the Adrian Symphony Orchestra present Johann Sebastian Bach's Magnificat, "a hymn of praise," on Wednesday, December 17, beginning at 7:30 PM in the Adrian College Chapel. Other music of the Christmas Season will also be presented. Fred Wilson will be conducting, and Wilnella Bush is accompanist.

Tickets are \$6 and \$8, and may be obtained by calling 517/265-5161, ext. 4468.

Chelsea State Bank Plans Week Long Festivity

To commemorate the observance of their 100th birthday and in celebration of the Grand Reopening of the newly remodeled downtown branch, Chelsea State Bank is having a week long holiday festivity. The celebration will take place the week of December 15-20, with the Bank's actual birth date being celebrated on Thursday, December 18.

Everyone from the area is invited to partake in the six day event which takes place at the Bank's downtown branch located at 305 South Main Street. There will be a drawing for door prizes each day for a chance to win one of 100 prizes. Refreshments will be served each day and giant birthday cake will be shared on Thursday the 18th.

The week long celebration will culminate on Saturday, December 20, with the drawing of the final 20 door prizes includ-

ing the grand prize - a 32" color console TV from Heydlauff's in Chelsea. There will be musical entertainment, festive decor and children's activities that day including "Colors" the Clown. During the week the Bank will be passing out specially produced 100th Anniversary calendars featuring historical photos of Chelsea State Bank and the Chelsea area.

To show its support of the Bank's longevity and achievement, "JIFFY" Mixes has produced a one-of-a-kind commemorative carton for its yellow cake mix, which will also be distributed free during the week.

The bank will also display memorabilia from the past years in the downtown lobby with historic items, bank records and old advertisements. In addition, archival photos will be on display around the interior of the Bank reflecting its 100 years of existence.


Nancy's Herb Pantry Manchester Mill Manchester, MI

- ✦ Herbs and Vitamins
- ✦ Kinesiology consultant



Wed - Fri 12 - 5
Sat 10 - 4

(313) 428-7621



CROSWELL

JOSEPH AND THE AMAZING TECHNICOLOR DREAMCOAT

by Tim Rice and Andrew Lloyd Webber
Sponsored by Ad: Rotary Club

AN AMAZING MUSICAL
the whole family will enjoy!

Live on stage at the
Croswell Opera House
November 28 - 30
and December 4 - 7

Performance Times:
8:00 pm Thurs., Fri. & Sat.
3:00 pm Sat. & Sun.

Public - \$16
Seniors & Students - \$14
Children 12 and under - \$7

Call for tickets or more info.: **(517) 264-SHOW**
129 E. Maumee • Downtown Adrian, Michigan



FODOR'S

Christmas Tree Farm

You cut or Fresh-cut
Douglas, Concolor & Fraser Fir -
Blue & White Spruce -
White, Scotch & Austrian Pine
All Sizes - All Prices

Children's Tree \$5.00
Roping - Wreaths - Gifts - Snacks
Free: Wagon Rides - Animals - Animated Toy House
Santa will be here on weekends!

Saws & Tree Cleaning Provided

3360 Burtch Road,
3-1/4 mi. south of Grass Lake Traffic Light
open daily 10 til 6 p.m. • 517-522-4982

WATERLOO AREA HISTORICAL SOCIETY & FARM MUSEUM

A glimpse of the Spirit of Christmas Past awaits visitors to the Waterloo Farm Museum on Saturday and Sunday, December 6 and 7, from noon to 5 PM. The house will be decorated as it would have been in the late 1800's and the gift shop will be overflowing with treats for all the senses.

Natural decorations of dried herbs and flowers, nuts, fruits, cedar and pine cones will set the scene in the downstairs rooms of the house where costumed guides will detail the activities which would have been taking place in each room for a Victorian Christmas on the Farm. Christmas music will be played during the afternoon on the parlor melodeon. Long ago days on a Michigan wilderness farm will be brought to life once again.

In the warm farm kitchen a typical meal for the season will be prepared on the wood stove - cooking game, squash, potatoes and the trimmings will lend their own special scent to the house reviving memories of the family life which once occupied this historic farmstead.

Visitors will be welcomed with hot spiced cider and cookies in the Hannewald Barn where items from the gift shop to fill stockings and recall old time amusements - books, toys, handmade soaps, candles and other wonderful gifts will be offered for sale.

On Sunday afternoon, beginning at 1:30 PM, the Dulcimer group "Blackberry Jam" from Grass Lake will entertain in the barn.


Special items in the gift array this year include a history of the local area, *The Settling of Waterloo*, written 20 years ago by Donald L. Katz. This 517 page out-of-print has been recently reprinted by the Historical Society, and they are offering it for sale.

Local authors Deanna and Allan Mallan's history based story featuring fictional characters, "The Friendly Spinning Wheel" will be available. The setting for their book is the Waterloo Farm of the 1800's.

Admission to this special Christmas event is \$1.00 for adults, students and young children are free. Additional information may be obtained by calling Museum Director Agnes Dikeman at (313) 769-2219 or the Farm at (517) 596-2254.

Y P S I L A N T I

FESTIVAL OF LIGHTS



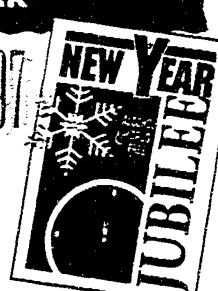
Opening Celebration
December 5, 1997 5:30 pm

Weekends-December 5-7, 12-14, 19-21,
Christmas Eve, Christmas Day, 6-10pm
New Year's Eve, 6:00-Midnight
RIVERSIDE PARK

YOU'RE INVITED TO THE '97

Thurs., Dec. 31, 1997

In and around Ypsilanti's Historic District.
Over 30 great acts for one low price. For more information contact the Ypsilanti Area Visitors & Convention Bureau at 800-285-9045 or visit www.ypsa.org



UNIGLOBE

Chelsea Travel, Inc.

1070 South Main Street
Chelsea, MI 48118
(313) 475-3110 ★ (800) 875-3113
Fax (313) 475-3748

We will be happy to help with any of your travel needs

INDEPENDENTLY OWNED
Means Better Personal Service

Classified

Services

Lost or Found a Pet? Call the Huron Valley Humane Society. 662-5585. tfn

Felder Painting: Interior and Exterior. Free estimates. Senior citizen discount. Phone 428-1190 or 428-8506 tfn

Farmers' Sand and Gravel.
We deliver and spread driveways. 475-8850 tfn

Benedict Painting: Call Chuck for free estimates. 17 years experience - interior & exterior painting. 517-536-4812 tfn

Stump Grinding & Tree Removal; Wood Chipping - Free estimates. Insured. R & L Tree Service 428-1675 Rich & Russ Lutton tfn

PREMIER CONTRACTING, Full service residential and light commercial builder. 428-9826. tfn

Retired Fireman, 30 years experience - plumbing, electrical repairs, drywall, painting, etc. Call Jerry 517-536-4344. TFN

Manchester Electric, Inc. Contracting & In-home service 428-8243. TFN

Quality House Cleaning weekly/biweekly. Tracie Palmer 428-0653. "The Cleaning Crew" 8/14, TFN

Painting & Drywall repair. Home repair, deck cleaning and painting. Serving Washtenaw County, Chelsea 433-1189. TFN

Would you like an extra pair of hands or some new ideas for decorating your home or office this holiday season? Call Barb Vecchioni for an appointment 428-9577. 12/4

Autos

Seized cars from \$175. Porsches, Cadillacs, Chevys, BMWs, Corvettes. Also Jeeps, 4WDs, your area. Toll Free 1-800-218-9000, Ext. A-11792 for current listings. 12/4

1993 Ford Explorer 4 x 4, XLT. New Tires, Excellent Condition, 87,000 miles. \$10,200. 313/428-8724 12/4

For sale: 1992 Chevrolet Lumina, Euro Sedan, many extras. Excellent condition. Vogel's 428-8436. Reasonable price. 12/4

Operating a business without advertising is like winking in the dark

You know what you are doing, but no one else does.

Help Wanted

Clark now hiring 2nd and 3rd shift and weekends. Benefits, vacation, flexible schedule, competitive pay. Apply in person, 100 E. Main. TFN

Moms: work while your kids are in school- Subway offers flexible hours to meet your schedule. Apply in person, 100 E. Main. TFN

Stu Evans Ford is looking for Auto Clean Up personnel. Plenty of work, excellent working conditions. Excellent benefits. Contact Pat Lyons at 428-8343 TFN

Stu Evans Ford is looking for Porters. Excellent working conditions, plenty of work, excellent benefits. Contact Pat Lyons at 428-8343 TFN

Stu Evans Ford is looking for Auto Technicians, experienced, preferably Ford. Plenty of work, excellent working conditions. Looking for diesel technicians and other work. Company demo and excellent benefits. Contact Pat Lyons at 428-8343 TFN

TEXAS Oil Company urgently needs dependable person in Manchester area. Regardless of training, write W.H. Hopkins, Dept. W-48158, Box 711, Ft. Worth, TX, 7601-0711. 12/4

Instructional Paraprofessional for special needs elementary student; \$7.85/hr, 6 1/2 hours/day. High school graduate-18+. Experience with elementary school students preferred. Strong communication skills. Applications available-Central Administration, Manchester Community Schools, 710 E. Main St., Manchester MI 48158. 12/4

Substitute Bus Drivers Needed-Manchester Community Schools is accepting applications for Substitute Bus Drivers. Training available. Must be 21 years of age. Applications may be picked up at Manchester Community Schools, 710 E. Main St., Manchester, MI, 48158. 12/4

Manchester Community Schools employment opportunities. Each year, substitute and part-time hourly positions may become available. These may include teachers, bus drivers, paraprofessionals, and secretaries. Applications for substitute employment can be obtained at the Central Administration Office, 710 E. Main, Manchester MI, 48158. 12/4

Day Shift 9:30 - 2:30 Pizza makers and Drivers needed. Monday - Friday. Great job for Moms. Apply in person at Ollie's Pizza 138 E. Main. TFN

Pizza Makers part time. Flexible hours apply in person Ollie's Main Street Pizza. TFN

Help Wanted

Part time help wanted--Chelsea Industries, Inc. has immediate openings for part time machine operators and light assembly. Both shifts are available and hours are flexible. If you are interested, we are accepting applications at our main office in Chelsea. We are located in the clock tower building. Please find our lobby, which is one entrance north of the clock tower, and fill out an application.

Starting pay is \$7.00 per hour with a top pay of \$8.75. If you have any questions, please call 313-475-8611.

Homes For Sale

GOV'T FORECLOSED homes from pennies on \$1. Delinquent tax, repo's, REOs. Your area. Toll Free 1-800-218-9000, ext. H-11792 for current listings. 12/4

WONDERFUL Georgian style home in village of Manchester with five bedrooms, two full baths. Upgrades include: roof, kitchen, furnace, wiring. \$195,000. Barbara Gomes, 429-2200 days/ (517)458-7038 eves. **EDWARD SUROVELL REALTORS** 12/11

FOR SALE BY OWNER - 12444 Trinkle Road. 1700 square feet home in beautiful country setting. One acre wooded lot, adjacent to 20 more. Three bedrooms, 2.5 baths, fireplace, two car garage. Chelsea Schools. Easy access to I-94, 15 minutes to Ann Arbor. The perfect first home! 313/475-9069

For Rent

Building on Main Street 428-8190. Office/Retail. TFN

2 bedroom apartment for rent. \$550/month. Pets additional, water included, first floor. Call 428-9380 or 428-8052 evenings. 12/4

Clinton: Office space upstairs-on Main Street. Approximately 1000 sq. ft. Has kitchen, full bath. Newly remodeled. Could also be apartment. Call 517-522-4064. tfn

1 bedroom apartment, downtown Manchester. \$425 per month. Leave message at 428-7051 for Diane. tfn

Child Care

Little Acorns Before and After School Care. Snow days. Martha Stoner, 428-9472. 12/11

Announcement

BREAKFAST
Manchester American Legion

First Sunday of every month.
Dec 7, 8:00 until Noon
\$4.00 per person

Free

Free kittens--very lovable. Born Sept. 26. Great Christmas Gift!! 428-7296. 12/4

Christmas Trees

Tefft Tree Farm--cut your own Scotch Pine, \$16.00. Douglas Fir, Blue Spruce also available. Open Saturday 8:00 am to dark. Weekdays 3:30 to dark. Closed Sunday. 8 miles west of Manchester at 11711 Austin Road. 517-536-4164. 12/11

Prayer to St. Jude

St. Jude, may the Sacred Heart of Jesus be adored, glorified, loved, and preserved throughout the world now and forever. Sacred Heart of Jesus, pray for us. St. Jude, helper of the hopeless, pray for us. Amen. Say the prayer nine times a day. By the eighth day, your prayer will be answered. It has never been known to fail. Publication must be promised. SP 12/4

Wanted

Wanted crop land to lease Bristle Farms 313-428-0214. tfn

Wanted: female housemate. Must love animals and country living. Non-smoking. 313-428-9896. 12/11

Misc.

FREE CASH GRANTS! College. Scholarships. Business. Medical bills. Never repay. Toll Free 1-800-218-9000 ext. G-11792. 12/4

CHILDREN'S VIOLIN LESSONS?

A small group of Manchester families is hoping to attract a violin teacher to the immediate area. If you and your children are interested, please call Janine Falk at 428-7867 by December 20.

Thank You

We want to say thank you to everyone for the prayers, cards, calls, visits, food and support at the time of mom's passing.

Also thank you to the Manchester Rescue Squad. You came promptly every time we needed you.

The Family of Esther
Kuyda

Thank You

The Manchester Co-Op Preschool auction held November 9, 1997 was a huge success--over \$5,400 was raised thanks to the generous donation we received.

We would like to thank all of the local businesses, organizations and individuals for your continued support.

18th Century Shoppe, Ann Arbor Ice Cube, Atlas-Clinton, American Soy Products, BB Crafts, Busch's ValuLand, Burch Family, Back Door, Mary Barkley DDS, Mary Blossom, Birgy Family, Borders, Dolores Brown, Liz Blossom, CCX, Calamity Jane's, Chapters & Verses, Chelsea Milling Co., Chronicle, Clark on the Go, Construction Connection, Cueter Chrysler, Curby Family, Dexter Pub, Discount Tire, Domino's, Dunsmore Family, DuRussel Farms, Eden Foods, Enterprise, First of America - Manchester, Flower Garden, Food For All Seasons, General Mills, Generations for Children, Gisting & Gisting, Global Travel - Tecumseh, Gordon Food Service, Jean Gorman, Great Harvest Bread Co., Greene Manufacturing, Inc., Haarer's, Healing Hands II, Heidi's Salons, Hickory Sticks Golf, Hollywood Entertainment, Home Depot-Canton, Raymond P. Howe DDS, JC Penney, K & W Equipment, Keith's Barber Shop, Kids Kingdom, Kiwanis, Kleinschmidt Hardware, Leverenz Family, Lyrick Studios, Manchester Automotive, Manchester Manor, Manchester Market, Manchester Pharmacy, Manchester Plastics, Manchester Sportsman Club, Manchester Tool & Die, Manchester Veterinary Clinic, Mark's Garage, Marti's Salon, Maid in America, Max & Erma's, McDonalds, Meijers, Mommy-I-Need-That, Mongolian Barbeque, Ms. Linda, O'Hara Chrysler, Pinetree Spa, Play-It-Again Sports, Pleasant Company, Pleasant Lake Hardware, Reddeman Farms Golf, Chris Roberts-Antieu, S-K Sales, Sahakian Family, Simon & Schuster, State Theatre, Stu Evans, Sweet Lorraine's Cafe, Somewhere in Time, Tom Smith, Subway - Saline, Teresa's Ceramics, Thompson Family, Toledo Zoo, Town & Country Cyclery, Uniglobe, United Artists, Walt Disney Co., Weber's Inn, White Rabbit, Withrow Family, Wild Swan.

Special Thank Yous to:
Our Auctioneer - Breeda Miller
St. Mary's Catholic Church
Emanuel United Church of Christ

...and many other friends and families of the Preschool.

Antiques

Manchester Antique Mall:
35 Dealers. Open 7 days 10-5.
116 E. Main. 428-9357. tfn

CLASSIFIED RATE:

\$4.00 for the first 20 words,
10¢ for each add'l word.

Thank You's & Memorials are \$5.00
for the first 50 words.

Ads must be prepaid

AD DEADLINE IS
5:00 PM Friday

Asset Testing

is needed to start college

Asset Testing dates for Winter Semester at the Chelsea High School:

December 9, 17, 1997
January 7, 1998
6-8 p.m.

Registration and Advising dates:

December 16, 17, 18 and January 5 4-8 p.m.
December 19 11 a.m.-1 p.m.

Please call for an appointment
(313) 475-5935



Western Regional Center

Classes begin Jan. 7



James C. Schneider
Owner

Schneider J.C.S. Service

Sales & Rental Janitorial Equipment & Machines
Janitorial Service • Carpet Cleaning

428-1880 Business

P. O. Box 648
Manchester, MI 48158

McLennan Landscape

10710 M-52

A personalized professional service

Call 428-7005

- Design Consultation
- Plant Installation
- Retaining Walls
- Mulch & Topsoil
- Finish Grading
- Shade Gardening
- Hydro Seeding
- Brick Pathways

Remember that special person with a Gift Certificate!



MICHIGAN Rose Bowl Sweatshirts

Now in Stock Great Male Gift

Calamity Jane's 109 E. Main

★ Mon - Sat 10-5 Thurs 'til 8pm Sun 12 - 5 ★

ADRIAN CINEMA 10

3150 N. Adrian Hwy
24 Hour Movie Line 517-265-3055

COME & SEE OUR NEW LOOK!

- 4 New Auditoriums featuring stadium Seating, Curved Screens, Digital Sound, & New Seats with extra leg room, remodeled lobby
- Gift Books & VIP Books Available
- Daily Mats. 'til 6 PM \$3.75

Week of Dec 5 - Dec 12

- Rainmaker (PG13)**
Daily 4:10, 7:00, 9:50
Sat & Sun 1:00, 4:10, 7:00, 9:50
- Anastasia (G)** Daily 5:30, 7:30, 9:30
Sat 1:15, 3:20, 5:30, 7:30, 9:30
Sun 1:15, 3:20, 5:30, 7:30, 9:30
- The Man Who Knew Too Little (PG)** Daily 4:45 Sat & Sun 1:20, 4:15
- I Know What You Did Last Summer (R)**
Daily 5:10, 7:10, 9:10 Sat & Sun 1:40, 5:10, 7:10, 9:10
- Mortal Kombat 2 (PG13)** Daily 5:45, 7:50, 9:55 Sat & Sun 1:30, 3:40, 5:45, 7:50, 9:55
- Starship Troopers (R)**
Fri-Thurs 6:45, 9:15
- Bean (PG13)**
Daily 4:45, 7:20, 9:20 Sat & Sun 2:00, 4:45, 7:20, 9:20
- The Jackal (R)**
Daily 4:30, 7:20, 10:00 Sat & Sun 1:15, 4:30, 7:20, 10:00
- Disney's Flubber (PG)** Daily 5:40, 7:40, 9:45 Sat & Sun 1:20, 3:30, 5:40, 7:40, 9:45
- Alien (R)**
Daily 4:40, 7:30, 9:55 Sat & Sun 2:15, 4:40, 7:30, 9:55
- Boogie Nights (R)** Daily 4:20, 8:00 Sat & Sun 1:00, 4:20, 8:00
- ADVANCE SCREENING**
Home Alone 3 (PG)
Sunday Dec 7 4:00

Deborah Engelbert

Real Estate Sales Associate
The Charles Reinhart Co.



30 Million In Sales!
Office: 313-971-6070
Direct: 313-669-5897
Res: 313-475-8303
Fax: 313-747-7880
2452 East Stadium Blvd.
Ann Arbor, MI 48104

Reinhart

Charles Reinhart Company Realtors

SUPPORT YOUR LOCAL NEWSPAPER
The Manchester Enterprise
(313) 428-8173

Kleinschmidt True Value Hardware

Help Is Just Around The Corner

19860 Sharon Valley Rd. • 428-8337

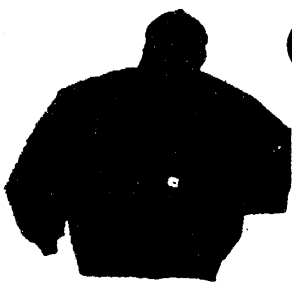
Monday-Friday 7a.m.-6p.m. • Saturday 8a.m.-5p.m.
Sunday 10a.m.-4p.m.



Christmas Open House

Fri., Sat., Sun.
Dec. 5th- 7th

FREE REFRESHMENTS



Carhartt

Hooded Active Jacket SALE

\$39.99

Thermal Lined

DRAWING—DRAWING—DRAWING—DRAWING

Name _____ No
Address _____ Purchase
Phone # _____ Necessary

1st Prize-\$129.99 Value 5 pc. Card Table & Chairs Set
2nd Prize-\$79.99 Value 20" Boys or Girls Bike

DRAWING HELD ON MONDAY DEC. 8th

UNIDEN bearcat

Bearcat
10 Band
20-channel
Scanner



SALE \$89.99



REMA SALE \$5.99

14 x 16" Insulated
Cookie Sheet



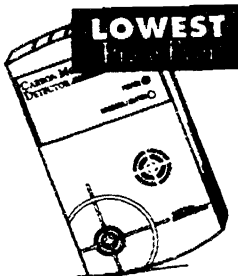
Lifelike Swag Branch Garland
For Indoor or Out
9ft Length
12 in. Diameter

18 ft. Garland



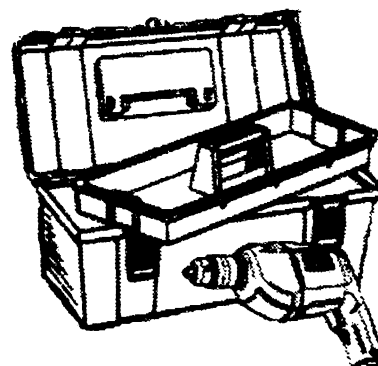
Sale \$5.99

Thick & Plush Indoors or Out!



\$19.97

Carbon Monoxide Detector
Protect your family today!
Plugs in any AC outlet. From "American Sensors"



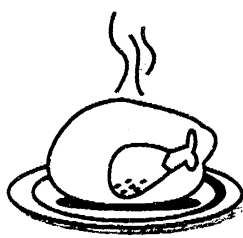
\$6.99
20" True Value Toolbox
with handy lift-out tray
(tools not included)

\$24.99
3/8" Variable Speed Reversing Drill
0-1200 RPM. Includes
chuck and key holder

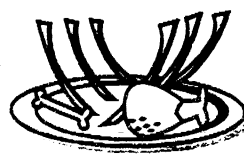
Manchester Sportsmans Club
8501 Grossman Rd.
Friday, 6:45 p.m.

Manchester American Legion
203 South Adrian
Sunday, 5:00 p.m.

STU EVANS



(BEFORE)



(AFTER)



The Seven Day, After Thanksgiving Sales Event!

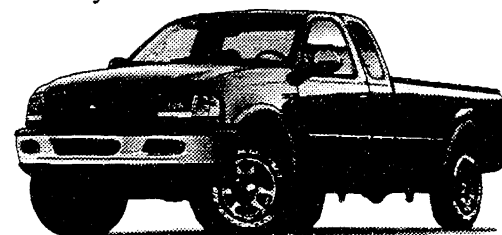
Redeem this coupon for an extra \$400 off the Already great deals listed below. But hurry, this extra cash is only available until December 5th.



Extra
\$400
Rebate*

Taurus LX

| THE ARITHMETIC | | OR | | |
|-------------------------------------|---------------|----|--------------------|------------------|
| Number of Months | 24 | | List Price | \$19,035 |
| Refundable Security Deposit | \$300 | | Rebate | \$750 |
| Cash Down Payment | \$1,000 | | Stu Evans Discount | \$1,377 |
| Total Amount Due at Inception | \$1,702 | | | |
| Total of Monthly Payments | \$6,738 | | Your Cost | \$16,908* |
| Total Mileage Allowed | 24,000 | | | |
| Mileage Charge Over 24,000 15¢/mile | | | | |
| Rebate | \$750 | | | |
| Monthly Lease Payment | \$262* | | | |



Extra
\$400
Rebate*

F150

| THE ARITHMETIC | | OR | | |
|-------------------------------------|---------------|----|--------------------|------------------|
| Number of Months | 24 | | List Price | \$21,535 |
| Refundable Security Deposit | \$275 | | Stu Evans Discount | \$2,493 |
| Cash Down Payment | \$1,000 | | | |
| Total Amount Due at Inception | \$1,602 | | Your Cost | \$19,042* |
| Total of Monthly Payments | \$5,794 | | | |
| Total Mileage Allowed | 24,000 | | | |
| Mileage Charge Over 24,000 15¢/mile | | | | |
| Monthly Lease Payment | \$222* | | | |



Extra
\$400
Rebate*

Windstar

| THE ARITHMETIC | | OR | | |
|-------------------------------------|------------------|----|--------------------|-----------------|
| Number of Months | 24 | | List Price | \$21,775 |
| Refundable Security Deposit | \$325 | | Rebate | \$1,500 |
| Cash Down Payment | \$1,200 | | Stu Evans Discount | \$1,523 |
| Total Amount Due at Inception | \$2,004 | | | |
| Total of Monthly Payments | \$7,628 | | Your Cost | \$18,752 |
| Total Mileage Allowed | 24,000 | | | |
| Mileage Charge Over 24,000 15¢/mile | | | | |
| Rebate | \$1,500 | | | |
| Monthly Lease Payment | \$281.63* | | | |



Extra
\$400
Rebate*

Escort ZX2

| THE ARITHMETIC | | OR | | |
|-------------------------------------|---------------|----|--------------------|-----------------|
| Number of Months | 24 | | List Price | \$14,895 |
| Refundable Security Deposit | \$250 | | Rebate | \$1,000 |
| Cash Down Payment | \$1,000 | | Stu Evans Discount | \$996 |
| Total Amount Due at Inception | \$1,584 | | | |
| Total of Monthly Payments | \$5,196 | | Your Cost | \$13,149 |
| Total Mileage Allowed | 24,000 | | | |
| Mileage Charge Over 24,000 15¢/mile | | | | |
| Rebate | \$1,000 | | | |
| Monthly Lease Payment | \$185* | | | |

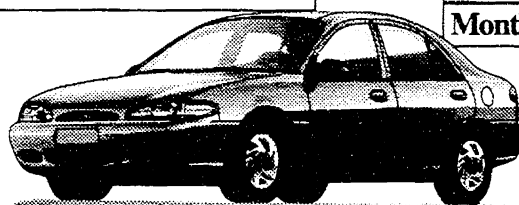
USED VEHICLES IN THIS COLUMN 6 MONTH 16,000 MILE WARRANTY

97 Taurus, Green #P40217
\$16,195

94 Escort 2 Dr. LX #25694
\$6,100

93 Escort G.T. #2023 A
Auto Trans A/C AM/FM Cass.
\$7,500

94 Escort 2 door Sport #9024A
5 spd A/C AM/FM Cass.
\$5,100



Escort 4 Door

| THE ARITHMETIC | | OR | | |
|-------------------------------------|---------------|----|--------------------|-----------------|
| Number of Months | 24 | | List Price | \$13,735 |
| Refundable Security Deposit | \$225 | | Rebate | \$1,000 |
| Cash Down Payment | \$1,000 | | Stu Evans Discount | \$835 |
| Total Amount Due at Inception | \$1,593 | | | |
| Total of Monthly Payments | \$4,842 | | Your Cost | \$11,900 |
| Total Mileage Allowed | 24,000 | | | |
| Mileage Charge Over 24,000 15¢/mile | | | | |
| Rebate | \$1,000 | | | |
| Monthly Lease Payment | \$201* | | | |

USED VEHICLES AS LOW AS

\$2,000

95 F-250 #25691
XL/Diesel/Manual Trans
\$18,910

97 Ranger Pickup
XLT/Auto Trans/4.0 V6/ Loaded
\$15,600

88 Escort 2 door #2002B
5 speed, Transportation Special
\$2,000

97 Mustang GT #4039X
Cobra R Wheels Black Leather
-Loaded-
\$23,935

95 F350 Crew Cab #1070A
Centaurus Package/Diesel
4 x 2 Dually Conv / Auto Trans
\$25,495

USED VEHICLES IN THIS COLUMN 6 MONTH 16,000 MILE WARRANTY

94 Explorer 4 door #4019Z
4 x 4 V6 Auto Trans Power Windows
Power Locks
AM/FM Cass.
\$16,695

94 Crown Victoria #7012A
Low Miles
\$12,500

94 Ranger Pick-up-3 to choose
\$8,300

* Does not include State fees
* Extra \$400 Rebate for Lease Only

Stu Evans Ford — 510 W. Main Manchester — 313-428-8343